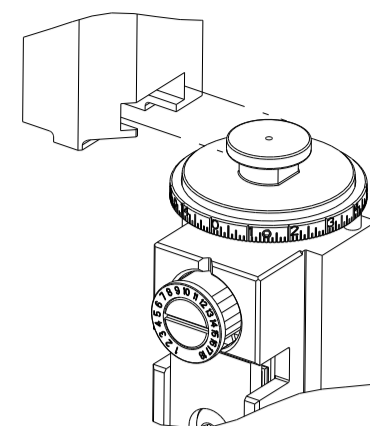


| PART NUMBER | REVISION | DESCRIPTION                      | FEED TYPE  |
|-------------|----------|----------------------------------|------------|
| 2837363-1   | C        | FINE CRIMP HEIGHT ADJUST         | MECHANICAL |
| 2837363-2   | C        | FINE CRIMP HEIGHT ADJUST         | PNEUMATIC  |
| 7-2837363-1 | C        | MECHANICAL AND CRIMP TOOLING KIT | MECHANICAL |
| 7-2837363-2 | C        | PNEUMATIC AND CRIMP TOOLING KIT  | PNEUMATIC  |
| 7-2837363-7 | C        | CRIMP TOOLING KIT                | -          |

ATLANTIC VERSION TERMINATOR INTERFACE ADAPTER



| APPLICATOR DATA |                |      |
|-----------------|----------------|------|
| CRIMP           | SIZE           | TYPE |
| WIRE            | 3.56 mm [.140] | F    |
| INSUL           | 5.15 mm [.203] | F    |

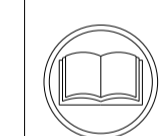
APPLICATOR INSTRUCTIONS  
408-35042

| TERMINAL DATA: DELPHI TERMINAL DELPHI CRIMP SPECIFICATION                              |                                    |             |                 |
|--|------------------------------------|-------------|-----------------|
| TERMINAL NAME: TAXI TERM M M/P 280   |                                    |             |                 |
| WIRE STRIP LENGTH  | TERMINAL INSULATION DIAMETER RANGE |             |                 |
| 5.46-6.22 mm [.215-.245 IN]  | ∅3.40-5.24 mm [.134-.206 IN]       |             |                 |
| TERMINAL APPLICATION SPECIFICATION (A)13790534 CRIMP INFO SHEET PG 3, 4 Rev 2014-07-29 |                                    |             |                 |
| TERMINALS APPLIED 5  |                                    |             |                 |
| TE TERMINAL  | DELPHI TERMINAL                    | TE TERMINAL | DELPHI TERMINAL |
| (A) 3311276-1  | (A) 13790534                       |             |                 |

| TERMINAL DATA: DELPHI TERMINAL DELPHI CRIMP SPECIFICATION                              |                                    |             |                 |
|--|------------------------------------|-------------|-----------------|
| TERMINAL NAME: TAXI TERM M M/P 280   |                                    |             |                 |
| WIRE STRIP LENGTH  | TERMINAL INSULATION DIAMETER RANGE |             |                 |
| 5.46-6.22 mm [.215-.245 IN]  | ∅3.40-5.24 mm [.134-.206 IN]       |             |                 |
| TERMINAL APPLICATION SPECIFICATION (B)13790534 CRIMP INFO SHEET PG 1, 2 Rev 2014-07-29 |                                    |             |                 |
| TERMINALS APPLIED 5  |                                    |             |                 |
| TE TERMINAL  | DELPHI TERMINAL                    | TE TERMINAL | DELPHI TERMINAL |
| (B) 3311276-1  | (B) 13790534                       |             |                 |

| WIRE SIZE | CRIMP HEIGHT mm [INCH]     | CRIMP HEIGHT REFERENCE SETTING |
|-----------|----------------------------|--------------------------------|
| 5.00mm2   | 2.55+/-0.05 [.100+/- .002] | 6.8                            |

| WIRE SIZE | CRIMP HEIGHT mm [INCH]     | CRIMP HEIGHT REFERENCE SETTING |
|-----------|----------------------------|--------------------------------|
| 5.00mm2   | 2.45+/-0.05 [.096+/- .002] | 7.8                            |



**\*WARNING**  
ON INSTALLATION, SET WIRE DISC TO CRIMP HEIGHT REFERENCE SETTING FOR LARGEST WIRE SIZE. CRIMP HEIGHT REFERENCE SETTINGS GREATER THAN THE VALUE SHOWN MAY CAUSE DAMAGE TO THE CRIMP TOOLING. REFER TO THE INSTRUCTION SHEET FOR PROPER SETUP AND ADJUSTMENTS.

- 1 RECOMMENDED SPARE PARTS
- 2 REFER TO SUPPLIED INSTRUCTION SHEET FOR CLEANING, LUBRICATION AND STORAGE OF APPLICATOR.
- 3 APPLY PART NUMBER 2-23419-6 LOCTITE TO THREADS OF ITEM 242.
- 4 CRIMP HEIGHT REFERENCE SETTING WAS THE SETTING USED WHEN THE APPLICATOR WAS QUALIFIED AT THE FACTORY. ADJUSTMENT MAY BE NECESSARY WHEN RUNNING APPLICATOR IN THE FIELD.
- 5 TERMINAL LUBRICANT IS RECOMMENDED.
- 6. UNLESS SPECIFIED OTHERWISE TORQUE VALUES SHALL BE USED PER DOCUMENT, 101-35000.

| LOC | DIST | REVISIONS     |           |     |      |
|-----|------|---------------|-----------|-----|------|
| P   | LTN  | DESCRIPTION   | DATE      | OWN | APVD |
| A   | 66   | RELEASED      | 29AUG2018 | KH  | CT   |
| B   |      | ECR-21-119868 | 05NOV2021 | TB  | RR   |
| C   |      | ECR-22-135760 | 12APR2022 | FZ  | GB   |

|   |     |     |     |     |             |                                     |     |
|---|-----|-----|-----|-----|-------------|-------------------------------------|-----|
| - | 1   | 1   | 1   | 1   | 22278-9     | SPRING, COMPRESSION                 | 300 |
| - | 2   | 2   | 2   | 2   | 4-18032-3   | SCR, SET, FLT PNT, M3 X 6.0         | 299 |
| - | 1   | 1   | 1   | 1   | 1803945-6   | TONKER                              | 298 |
| - | 1   | 1   | 1   | 1   | 1803944-1   | SPACER, TONKER                      | 297 |
| - | 2   | 2   | 2   | 2   | 2168083-1   | SCR, SKT HD CAP, RoHS, M3 X 8.0     | 269 |
| - | 1   | 1   | 1   | 1   | 1633782-4   | FENCE                               | 267 |
| - | 1   | -   | 1   | -   | 2119641-1   | FEED CAM, AIR FEED                  | 248 |
| - | 1   | 1   | 1   | 1   | 2119082-4   | CAM, SNAIL, INSULATION ADJUSTMENT   | 244 |
| - | 1   | 1   | 1   | 1   | 2079764-1   | WASHER, WAVE SPRING, CREST-TO-CREST | 243 |
| - | 1   | 1   | 1   | 1   | 2119083-1   | RETAINER, INSULATION DIAL           | 242 |
| - | 1   | 1   | 1   | 1   | 7-18023-7   | SCR, SKT HD CAP M3 X 4.0            | 241 |
| - | -   | 1   | -   | 1   | 2119580-1   | MECHANICAL FEED ASSEMBLY            | 239 |
| - | 1   | -   | 1   | -   | 2844940-1   | AIR FEED MODULE                     | 238 |
| - | REF | REF | REF | REF | 994970-2    | COUNTER, MAGNETIC                   | 164 |
| - | 1   | 1   | 1   | 1   | 2119955-1   | ASSY, LUBRICATOR, SIDE FEED         | 113 |
| - | 1   | 1   | 1   | 1   | 2844908-1   | SCREW, LOCKING                      | 99  |
| - | 1   | 1   | 1   | 1   | 2844907-1   | POST, LOCKING                       | 98  |
| - | 1   | 1   | 1   | 1   | 455888-6    | SPACER, CRIMPER                     | 82  |
| - | 2   | 2   | 2   | 2   | 2079383-4   | SCR, BHSC, RoHS (M4 X 8)            | 79  |
| - | 1   | 1   | 1   | 1   | 1803096-1   | EXTENSION PLATE                     | 78  |
| - | 1   | 1   | 1   | 1   | 1803607-3   | DOCUMENTATION PACKAGE               | 71  |
| - | 1   | 1   | 1   | 1   | 2119791-9   | DEPRESSOR, WIRE                     | 70  |
| - | 1   | 1   | 1   | 1   | 2119740-1   | TAG IDENTIFICATION                  | 67  |
| - | 2   | 2   | 2   | 2   | 2168078-1   | SCREW, DRIVE, RH, RoHS, 2 x .188    | 66  |
| - | 1   | 1   | 1   | 1   | 2168083-2   | SCR, SKT HD CAP, RoHS, M4 X 8.0     | 60  |
| - | 1   | 1   | 1   | 1   | 5-18022-5   | SCR, HEX HD CAP, M4 X 6.0           | 59  |
| - | 1   | 1   | 1   | 1   | 1338685-1   | PAWL, FEED                          | 56  |
| - | 4   | 4   | 4   | 4   | 2168083-3   | SCR, SKT HD CAP, RoHS, M4 X 12.0    | 54  |
| - | 2   | 2   | 2   | 2   | 2-2168083-6 | SCR, SKT HD CAP, RoHS, M4 X 18      | 53  |
| - | 1   | 2   | 1   | 2   | 18023-9     | SCR, SKT HD CAP M4 X 6.0            | 49  |
| - | -   | 1   | -   | 1   | 2119652-1   | FEED CAM, PRE FEED                  | 48  |
| - | -   | 1   | -   | 1   | 2119653-1   | FEED CAM, POST FEED                 | 47  |
| - | 1   | 1   | 1   | 1   | 1803583-9   | APPLICATOR BASIC ASSEMBLY, SF       | 46  |
| - | 1   | 1   | 1   | 1   | 1803515-1   | RAM ASSEMBLY, SF ATLANTIC           | 44  |
| - | 1   | 1   | 1   | 1   | 1803602-1   | SCR, BHSC, RoHS (M8 X 25)           | 41  |
| - | 1   | 1   | 1   | 1   | 1752356-3   | SUPPORT, TERMINAL                   | 34  |
| - | 2   | 2   | 2   | 2   | 2079383-5   | SCR, BHSC, RoHS (M4 X 20)           | 33  |
| - | 2   | 2   | 2   | 2   | 2-2844962-0 | SPACER, CYLINDRICAL, STRIP GUIDE    | 30  |
| - | 1   | 1   | 1   | 1   | 2844992-1   | ASSEMBLY, STRIP GUIDE               | 29  |
| - | 1   | 1   | 1   | 1   | 455888-5    | SPACER, CRIMPER                     | 28  |
| - | 1   | 1   | 1   | 1   | 1320928-6   | STRIP GUIDE                         | 24  |
| - | 1   | 1   | 1   | 1   | 2168083-2   | SCR, SKT HD CAP, RoHS, M4 X 8.0     | 21  |
| - | 2   | 2   | 2   | 2   | 1-18028-2   | WASHER, FLAT, REG M4                | 20  |
| - | 1   | 1   | 1   | 1   | 2119533-1   | STRIPPER, SIDE FEED                 | 19  |
| - | 1   | 1   | 1   | 1   | 2119806-1   | INSERT, SHEAR                       | 13  |
| - | 1   | 1   | 1   | 1   | 3-22280-3   | SPRING, COMPRESSION                 | 12  |
| - | 1   | 1   | 1   | 1   | 1-356885-4  | STOP, SHEAR                         | 11  |
| - | 1   | 1   | 1   | 1   | 2119805-1   | SHEAR HOLDER, FRONT                 | 10  |
| - | 1   | 1   | 1   | 1   | 1803095-6   | FLOATING SHEAR, FRONT               | 9   |
| - | 1   | 2   | 2   | 1   | 1-1633926-8 | ANVIL, COMBINATION                  | 8   |
| - | 2   | 2   | 2   | 2   | 240641-5    | SPACER                              | 7   |
| - | -   | -   | -   | -   | -           | -                                   | 6   |
| - | 1   | 1   | 1   | 1   | 1-2119757-0 | DEPRESSOR, SHEAR                    | 5   |
| - | 1   | 1   | 1   | 1   | 2-238011-6  | BLOCK, CRIMPER SPACER               | 4   |
| - | 1   | 2   | 2   | 1   | 3-1803260-8 | CRIMPER, INSULATION F PREMIUM       | 3   |
| - | 1   | 1   | 1   | 1   | 455888-7    | SPACER, CRIMPER                     | 2   |
| - | 1   | 2   | 2   | 1   | 456411-3    | CRIMPER, WIRE PREMIUM               | 1   |

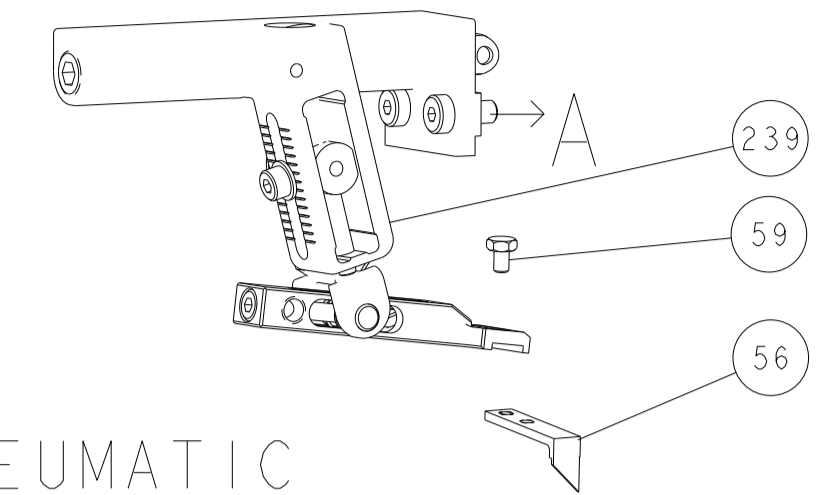
ATLANTIC VERSION  
Shown on sheets 1 of 4 & 2 of 4  
(Pacific version shown on sheets 3 of 4 & 4 of 4)

| DIMENSIONS: |         | TOLERANCES UNLESS OTHERWISE SPECIFIED: |         | MATERIAL: |         |
|-------------|---------|--|---------|-----------|---------|
| mm          | 0 PLC ± | 1 PLC ±                                | 2 PLC ± | 3 PLC ±   | 4 PLC ± |
|             | ANGLES  | FINISH                                 |         |           |         |

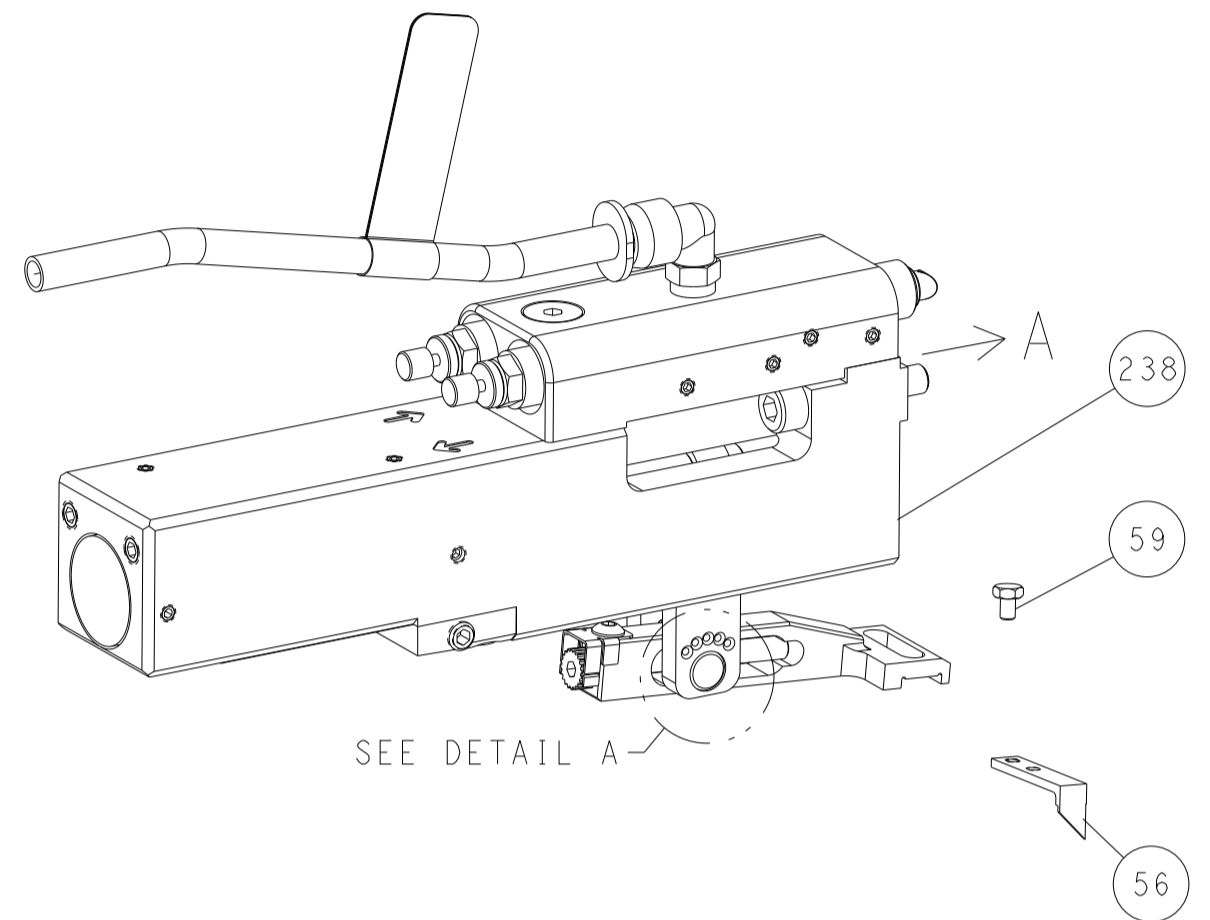
|  |           |                              |
|--|-----------|------------------------------|
| OWN                                    | H. HUANG  | 23JUL2018                    |
| CHK                                    | L. ZHANG  | 23JUL2018                    |
| APVD                                   | L. ZHANG  | 23JUL2018                    |
| PRODUCT SPEC                           |           |                              |
| APPLICATION SPEC                       |           |                              |
| SIZE                                   | CAGE CODE | DRAWING NO                   |
| A1                                     | 00779     | 2837363                      |
| Customer Accessible Production Drawing |           | SCALE 1:2 SHEET 1 OF 4 REV C |

| REVISONS |      | DATE        | OWN | APVD |
|----------|------|-------------|-----|------|
| LOC      | DIST |             |     |      |
| A        | 66   |             |     |      |
| P        | LTM  | DESCRIPTION |     |      |
| -        | -    | SEE SHEET 1 | -   | -    |

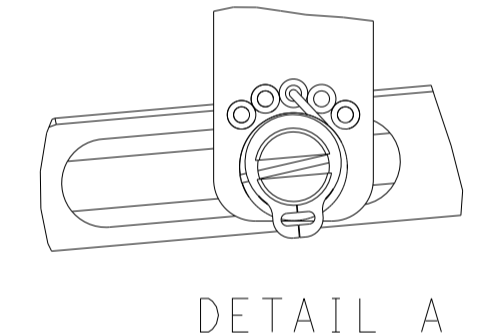
# FEED TYPE MECHANICAL



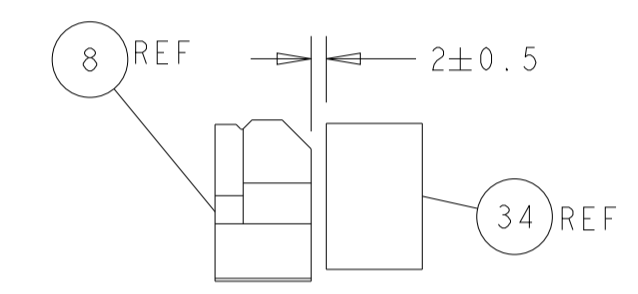
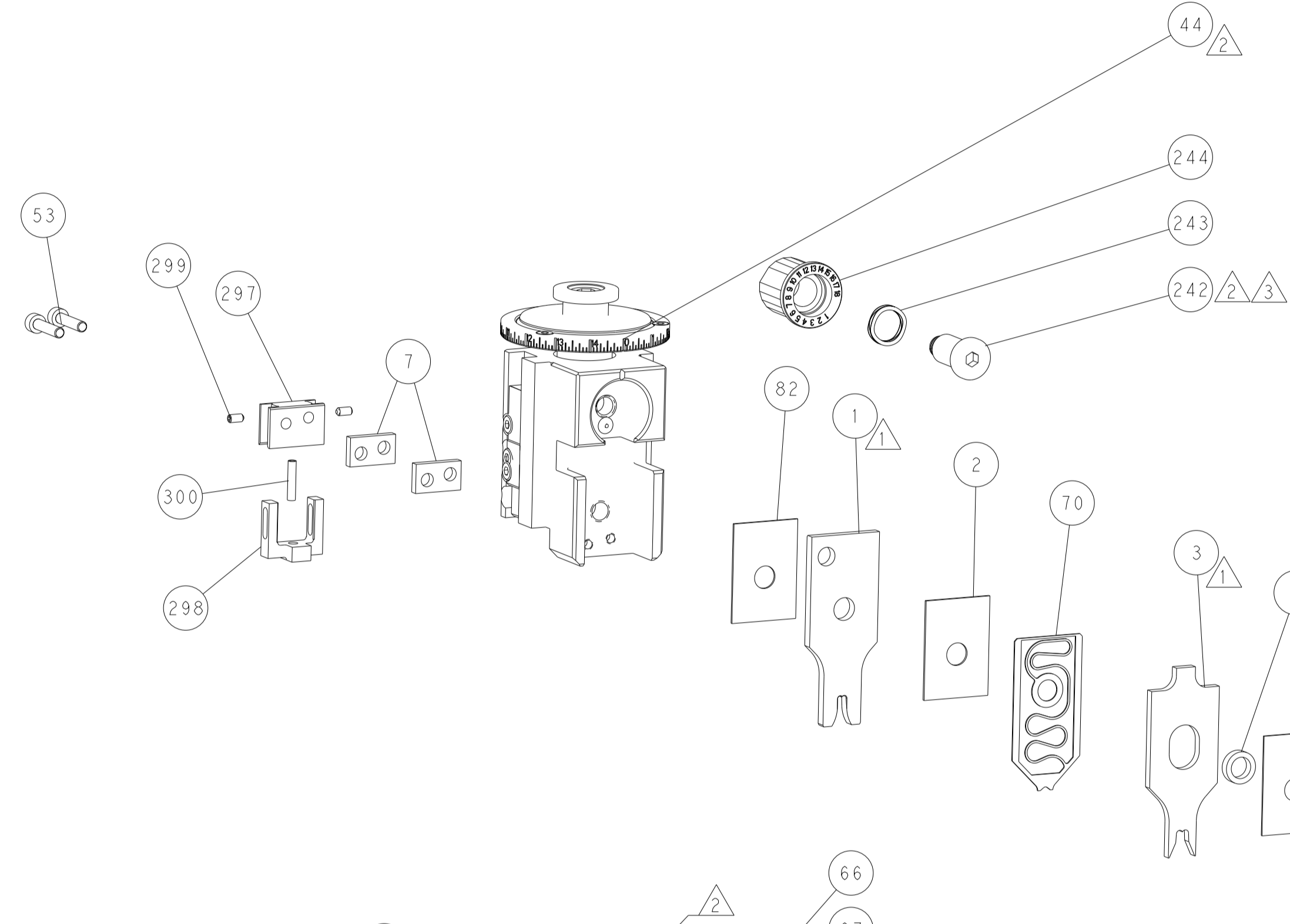
## PNEUMATIC



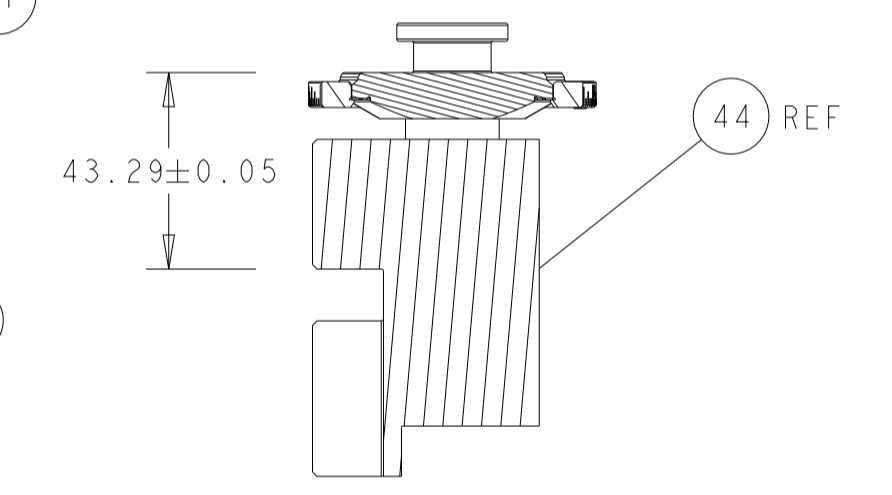
## FEED SPRING SETTING POSITION (SHOWN FROM REAR SIDE)



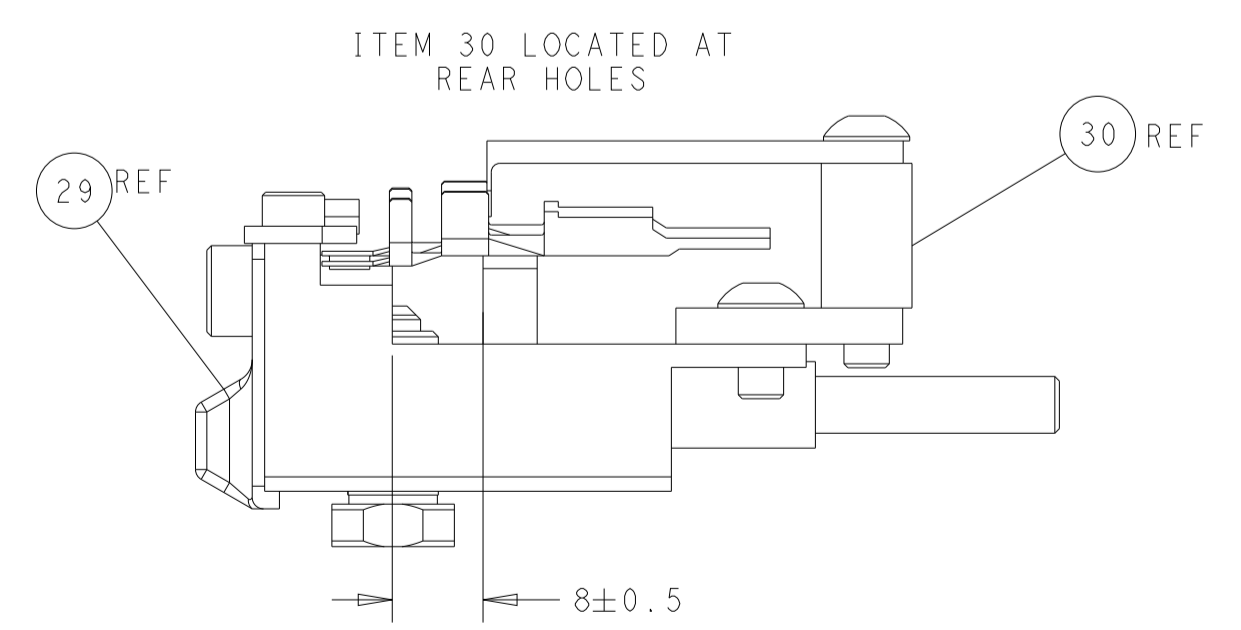
DETAIL A



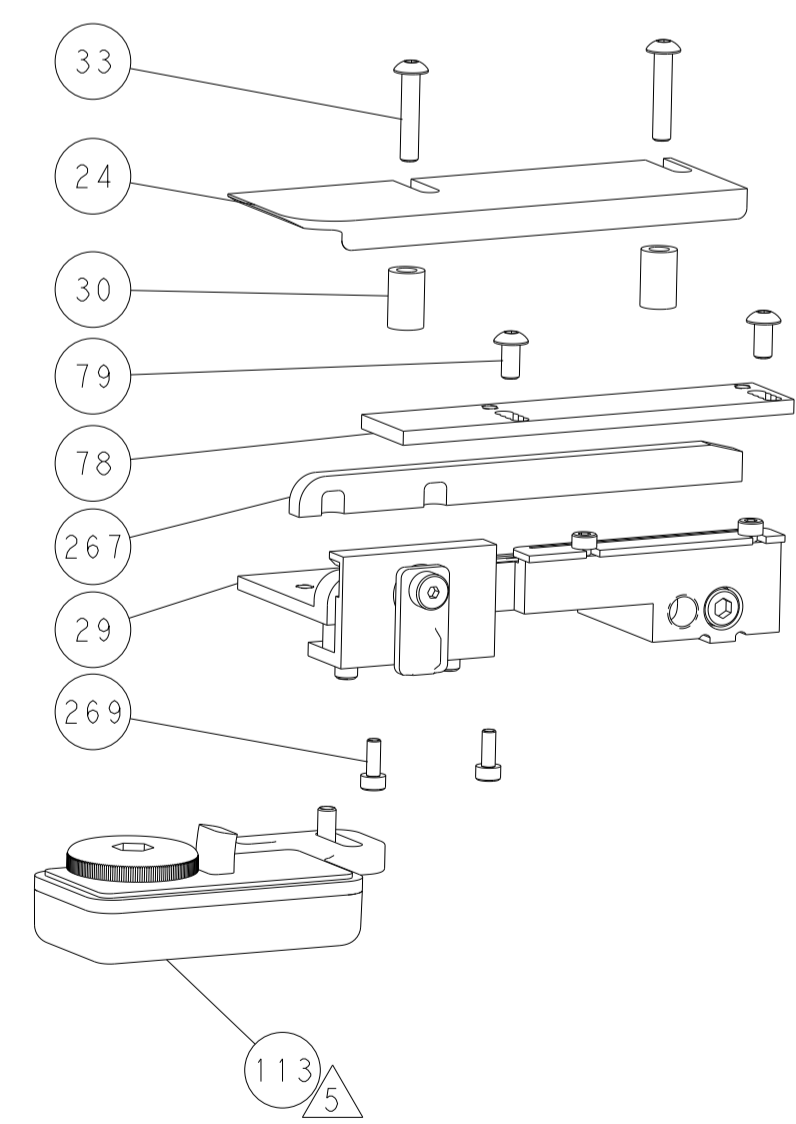
TERMINAL SUPPORT LOCATION



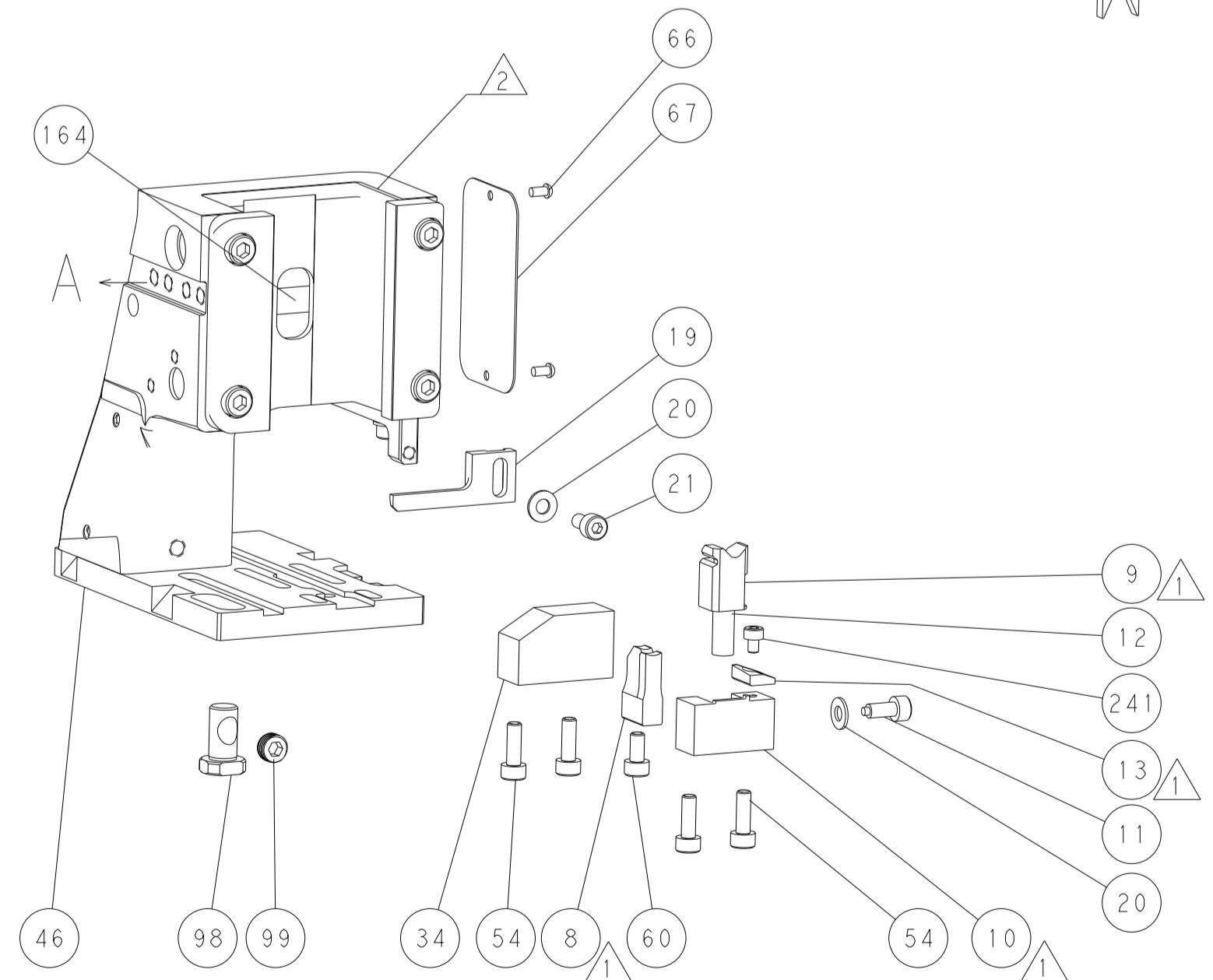
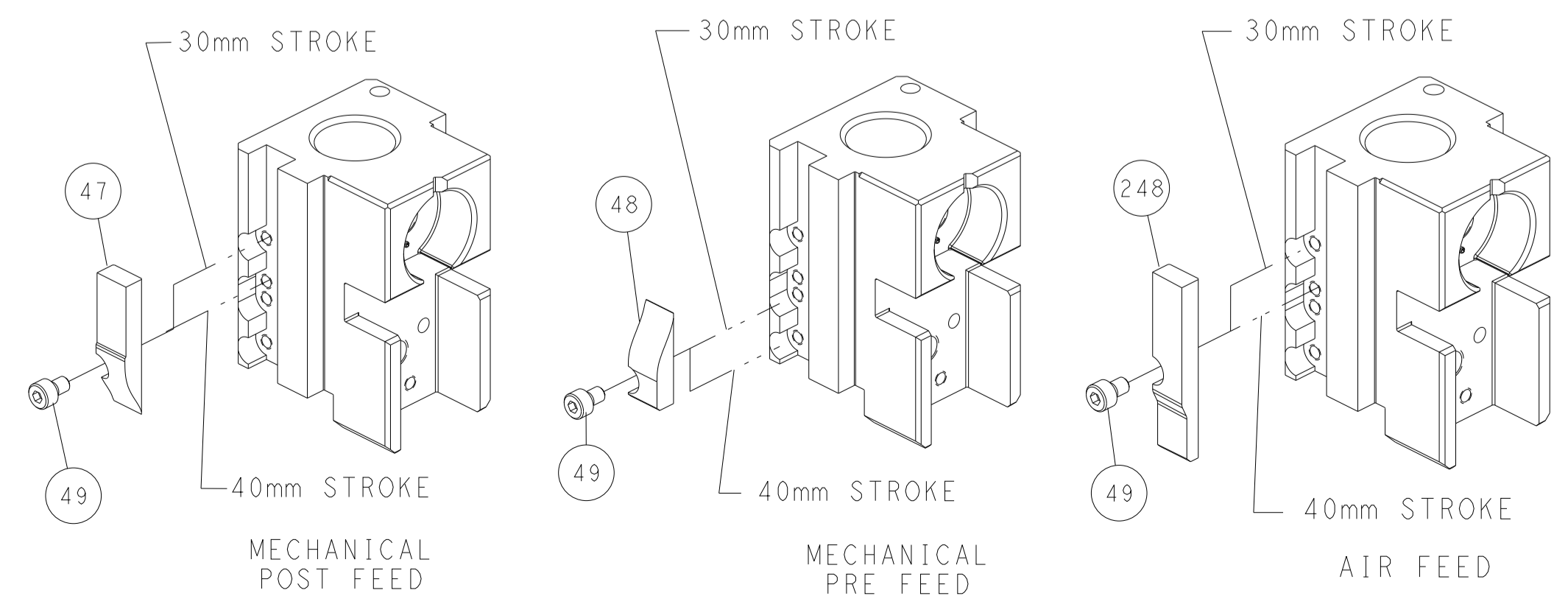
RAM SET-UP



FEED TRACK POSITION GUIDE BY WIRE BARREL



# CAM POSITIONS

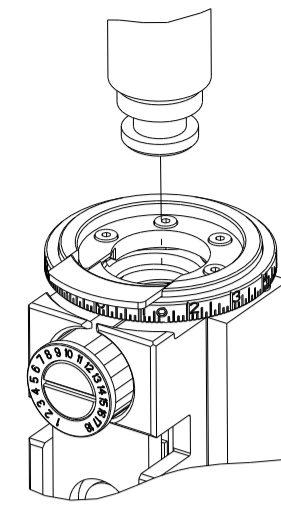


**ATLANTIC VERSION**  
 Shown on sheets 1 of 4 & 2 of 4  
 (Pacific version shown on sheets 3 of 4 & 4 of 4)

|             |         |  |         |  |         |  |  |
|-------------|---------|--|---------|--|---------|--|--|
| DIMENSIONS: |         | TOLERANCES UNLESS OTHERWISE SPECIFIED: |         | DWN<br>R. HUANG<br>23JUL2018           |         | TE Connectivity<br>Harrisburg, PA 17105-3608       |  |
| mm          | 0 PLC ± | 1 PLC ±                                | 2 PLC ± | 3 PLC ±                                | 4 PLC ± | NAME<br>Ocean Side Feed Applicator                 |  |
| MATERIAL:   |         | FINISH:                                |         | APVD<br>L. ZHANG<br>23JUL2018          |         | RESTRICTED TO                                      |  |
|             |         |  |         | PRODUCT SPEC                           |         | SIZE CAGE CODE DRAWING NO                          |  |
|             |         |  |         | APPLICATION SPEC                       |         | A1 00779 C=2837363                                 |  |
|             |         |  |         | WEIGHT                                 |         | SCALE 1:2 SHEET 2 OF 4 REV C                       |  |
|             |         |  |         | Customer Accessible Production Drawing |         | SHEETS 3 & 4 ARE NOT REQUIRED FOR ATLANTIC VERSION |  |

| PART NUMBER | REVISION | DESCRIPTION              | FEED TYPE  |
|-------------|----------|--------------------------|------------|
| 2-2837363-1 | C        | FINE CRIMP HEIGHT ADJUST | MECHANICAL |
| 2-2837363-2 | C        | FINE CRIMP HEIGHT ADJUST | PNEUMATIC  |
| 7-2837363-7 | C        | CRIMP TOOLING KIT        | -          |

PACIFIC VERSION TERMINATOR  
INTERFACE ADAPTER



| APPLICATOR DATA                      |                  |      |
|--------------------------------------|------------------|------|
| CRIMP                                | SIZE             | TYPE |
| WIRE                                 | 3.56 mm [ .140 ] | F    |
| INSUL                                | 5.15 mm [ .203 ] | F    |
| APPLICATOR INSTRUCTIONS<br>408-35042 |                  |      |

| TERMINAL DATA: DELPHI TERMINAL DELPHI CRIMP SPECIFICATION                              |                                    |             |                 |
|--|------------------------------------|-------------|-----------------|
| TERMINAL NAME: TAXI TERM M M/P 280   |                                    |             |                 |
| WIRE STRIP LENGTH  | TERMINAL INSULATION DIAMETER RANGE |             |                 |
| 5.46-6.22 mm [ .215-.245 IN ]  | Ø3.40-5.24 mm [ .134-.206 IN ]     |             |                 |
| TERMINAL APPLICATION SPECIFICATION (A)13790534 CRIMP INFO SHEET PG 3, 4 Rev 2014-07-29 |                                    |             |                 |
| TERMINALS APPLIED  |                                    |             |                 |
| TE TERMINAL  | DELPHI TERMINAL                    | TE TERMINAL | DELPHI TERMINAL |
| (A) 3311276-1  | (A) 13790534                       |             |                 |

| TERMINAL DATA: DELPHI TERMINAL DELPHI CRIMP SPECIFICATION                              |                                    |             |                 |
|--|------------------------------------|-------------|-----------------|
| TERMINAL NAME: TAXI TERM M M/P 280   |                                    |             |                 |
| WIRE STRIP LENGTH  | TERMINAL INSULATION DIAMETER RANGE |             |                 |
| 5.46-6.22 mm [ .215-.245 IN ]  | Ø3.40-5.24 mm [ .134-.206 IN ]     |             |                 |
| TERMINAL APPLICATION SPECIFICATION (B)13790534 CRIMP INFO SHEET-PG 1, 2 Rev 2014-07-29 |                                    |             |                 |
| TERMINALS APPLIED  |                                    |             |                 |
| TE TERMINAL  | DELPHI TERMINAL                    | TE TERMINAL | DELPHI TERMINAL |
| (B) 3311276-1  | (B) 13790534                       |             |                 |

| WIRE SIZE | CRIMP HEIGHT mm [INCH]       | CRIMP HEIGHT REFERENCE SETTING |
|-----------|------------------------------|--------------------------------|
| 5.00mm2   | 2.55+/-0.05 [ .100+/- .002 ] | 6.8                            |

| WIRE SIZE | CRIMP HEIGHT mm [INCH]       | CRIMP HEIGHT REFERENCE SETTING |
|-----------|------------------------------|--------------------------------|
| 5.00mm2   | 2.45+/-0.05 [ .096+/- .002 ] | 7.8                            |

**\*WARNING**  
ON INSTALLATION, SET WIRE DISC TO CRIMP HEIGHT REFERENCE SETTING FOR LARGEST WIRE SIZE. CRIMP HEIGHT REFERENCE SETTINGS GREATER THAN THE VALUE SHOWN MAY CAUSE DAMAGE TO THE CRIMP TOOLING. REFER TO THE INSTRUCTION SHEET FOR PROPER SETUP AND ADJUSTMENTS.

- RECOMMENDED SPARE PARTS
- REFER TO SUPPLIED INSTRUCTION SHEET FOR CLEANING, LUBRICATION AND STORAGE OF APPLICATOR.
- APPLY PART NUMBER 2-23419-6 LOCTITE TO THREADS OF ITEM 242.
- CRIMP HEIGHT REFERENCE SETTING WAS THE SETTING USED WHEN THE APPLICATOR WAS QUALIFIED AT THE FACTORY. ADJUSTMENT MAY BE NECESSARY WHEN RUNNING APPLICATOR IN THE FIELD.
- TERMINAL LUBRICANT IS RECOMMENDED.
- 6. UNLESS SPECIFIED OTHERWISE TORQUE VALUES SHALL BE USED PER DOCUMENT, 101-35000.

| LOC |     | DIST |     | REVISIONS |  |  |  |
|-----|-----|------|-----|-----------|--|--|--|
| P   | LTN | DATE | OWN | APVD      |  |  |  |
| A   | 66  |      |     |           |  |  |  |
|     |     |      |     |           |  |  |  |

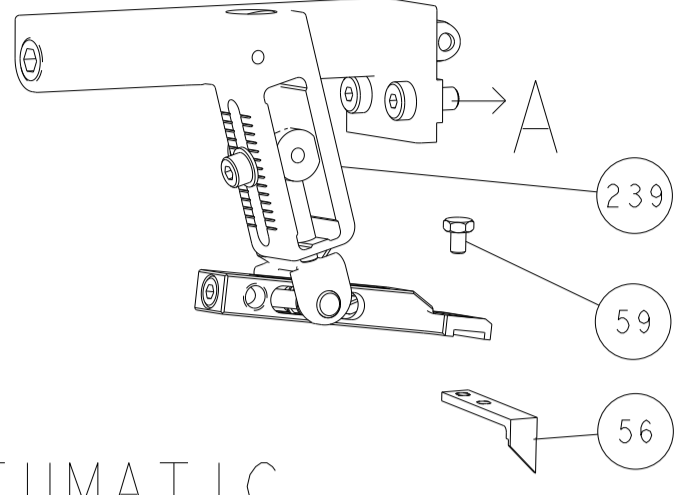
|   |     |     |             |                                     |     |
|---|-----|-----|-------------|-------------------------------------|-----|
| - | 1   | 1   | 22278-9     | SPRING, COMPRESSION                 | 300 |
| - | 2   | 2   | 4-18032-3   | SCR, SET, FLT PNT, M3 X 6.0         | 299 |
| - | 1   | 1   | 1803945-6   | TONKER                              | 298 |
| - | 1   | 1   | 1803944-1   | SPACER, TONKER                      | 297 |
| - | 2   | 2   | 2168083-1   | SCR, SKT HD CAP, RoHS, M3 X 8.0     | 269 |
| - | 1   | 1   | 1633782-4   | FENCE                               | 267 |
| - | 1   | 1   | 2119082-4   | CAM, SNAIL, INSULATION ADJUSTMENT   | 244 |
| - | 1   | 1   | 2079764-1   | WASHER, WAVE SPRING, CREST-TO-CREST | 243 |
| - | 1   | 1   | 2119083-1   | RETAINER, INSULATION DIAL           | 242 |
| - | 1   | 1   | 7-18023-7   | SCR, SKT HD CAP M3 X 4.0            | 241 |
| - | -   | -   | 2119580-1   | MECHANICAL FEED ASSEMBLY            | 239 |
| - | 1   | -   | 2844940-1   | AIR FEED MODULE                     | 238 |
| - | REF | REF | 994970-2    | COUNTER, MAGNETIC                   | 164 |
| - | 1   | -   | 2119641-2   | FEED CAM, AIR FEED                  | 151 |
| - | 1   | 1   | 2168083-8   | SCR, SKT HD CAP, RoHS, M4 X 16      | 144 |
| - | 4   | 4   | 2168083-9   | SCR, SKT HD CAP, RoHS, M4 X 20      | 143 |
| - | -   | -   | 2119653-2   | FEED CAM, POST FEED                 | 142 |
| - | 1   | 1   | 1-1803583-0 | APPLICATOR BASIC ASSEMBLY, SF       | 141 |
| - | 1   | 1   | 1803516-1   | RAM ASSEMBLY, SF PACIFIC            | 140 |
| - | 1   | 1   | 2119955-1   | ASSY, LUBRICATOR, SIDE FEED         | 113 |
| - | 1   | 1   | 2844908-1   | SCREW, LOCKING                      | 99  |
| - | 1   | 1   | 2844907-1   | POST, LOCKING                       | 98  |
| - | 1   | 1   | 455888-6    | SPACER, CRIMPER                     | 82  |
| - | 2   | 2   | 2079383-4   | SCR, BHSC, RoHS (M4 X 8)            | 79  |
| - | 1   | 1   | 1803096-1   | EXTENSION PLATE                     | 78  |
| - | 1   | 1   | 1803607-3   | DOCUMENTATION PACKAGE               | 71  |
| - | 1   | 1   | 2119791-9   | DEPRESSOR, WIRE                     | 70  |
| - | 1   | 1   | 2119740-1   | TAG, IDENTIFICATION                 | 67  |
| - | 2   | 2   | 2168078-1   | SCREW, DRIVE, RH, RoHS, 2 x .188    | 66  |
| - | 1   | 1   | 5-18022-5   | SCR, HEX HD CAP, M4 X 6.0           | 59  |
| - | 1   | 1   | 1338685-1   | PAWL, FEED                          | 56  |
| - | 2   | 2   | 2-2168083-6 | SCR, SKT HD CAP, RoHS, M4 X 18      | 53  |
| - | 1   | 2   | 18023-9     | SCR, SKT HD CAP M4 X 6.0            | 49  |
| - | -   | -   | 2119652-1   | FEED CAM, PRE FEED                  | 48  |
| - | 1   | 1   | 1803602-1   | SCR, BHSC, RoHS (M8 X 25)           | 41  |
| - | 1   | 1   | 1752356-3   | SUPPORT, TERMINAL                   | 34  |
| - | 2   | 2   | 2079383-5   | SCR, BHSC, RoHS (M4 X 20)           | 33  |
| - | 2   | 2   | 2-2844962-0 | SPACER, CYLINDRICAL, STRIP GUIDE    | 30  |
| - | 1   | 1   | 2844992-1   | ASSEMBLY, STRIP GUIDE               | 29  |
| - | 1   | 1   | 455888-5    | SPACER, CRIMPER                     | 28  |
| - | 1   | 1   | 1320928-6   | STRIP GUIDE                         | 24  |
| - | 1   | 1   | 2168083-2   | SCR, SKT HD CAP, RoHS, M4 X 8.0     | 21  |
| - | 2   | 2   | 1-18028-2   | WASHER, FLAT, REG M4                | 20  |
| - | 1   | 1   | 2119533-1   | STRIPPER, SIDE FEED                 | 19  |
| - | 1   | 1   | 2119806-1   | INSERT, SHEAR                       | 13  |
| - | 1   | 1   | 3-22280-3   | SPRING, COMPRESSION                 | 12  |
| - | 1   | 1   | 1-356885-4  | STOP, SHEAR                         | 11  |
| - | 1   | 1   | 2119805-1   | SHEAR HOLDER, FRONT                 | 10  |
| - | 1   | 1   | 1803095-6   | FLOATING SHEAR, FRONT               | 9   |
| - | 1   | 1   | 1-1633926-8 | ANVIL, COMBINATION                  | 8   |
| - | 2   | 2   | 240641-5    | SPACER                              | 7   |
| - | -   | -   | -           | -                                   | 6   |
| - | 1   | 1   | 1-2119757-0 | DEPRESSOR, SHEAR                    | 5   |
| - | 1   | 1   | 2-238011-6  | BLOCK, CRIMPER SPACER               | 4   |
| - | 1   | 1   | 3-1803260-8 | CRIMPER, INSULATION F PREMIUM       | 3   |
| - | 1   | 1   | 455888-7    | SPACER, CRIMPER                     | 2   |
| - | 1   | 1   | 456411-3    | CRIMPER, WIRE PREMIUM               | 1   |

PACIFIC VERSION  
Shown on sheets 3 of 4 & 4 of 4  
(Atlantic version shown on sheets 1 of 4 & 2 of 4)

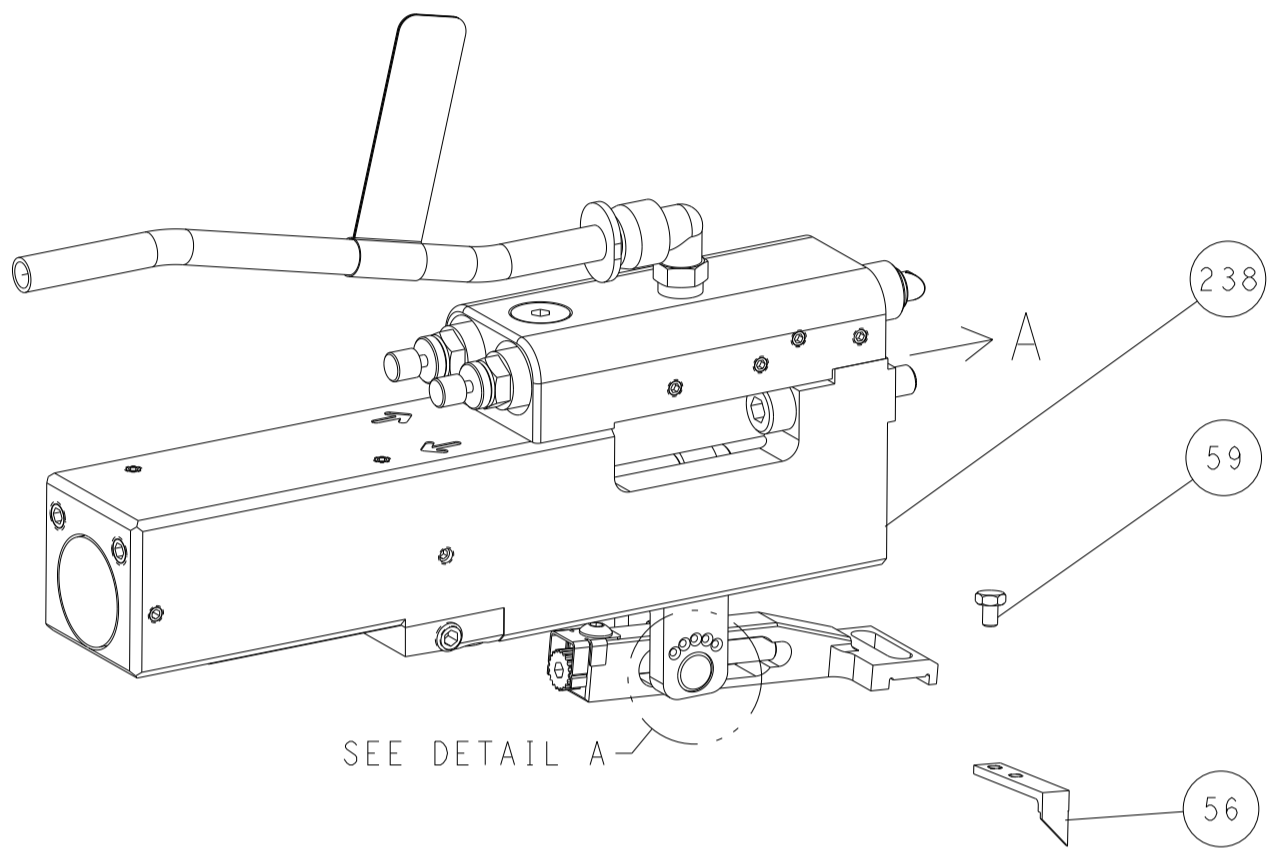
| DIMENSIONS:                            |         | TOLERANCES UNLESS OTHERWISE SPECIFIED: |         | DRAWING NO |         | RESTRICTED TO |         |
|--|---------|--|---------|------------|---------|---------------|---------|
| mm                                     | 0 PLC ± | 1 PLC ±                                | 2 PLC ± | 3 PLC ±    | 4 PLC ± | 5 PLC ±       | 6 PLC ± |
|  | ANGLES  | FINISH                                 |         |            |         |               |         |
| MATERIAL                               |         |  |         | WEIGHT     |         | SCALE         |         |
| Customer Accessible Production Drawing |         |  |         | SCALE 1:2  |         | SHEET 3 OF 4  |         |

| LOC | DIST | REVISIONS   |      |    |      |
|-----|------|-------------|------|----|------|
| A   | 66   | REV         | DATE | BY | APPV |
| -   | -    | SEE SHEET 1 | -    | -  | -    |

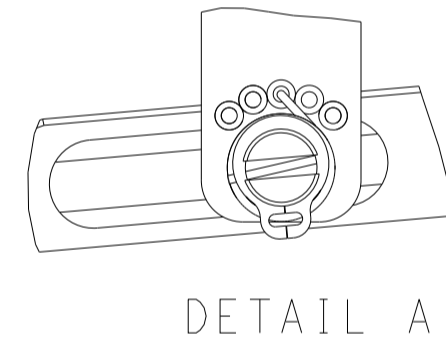
# FEED TYPE MECHANICAL



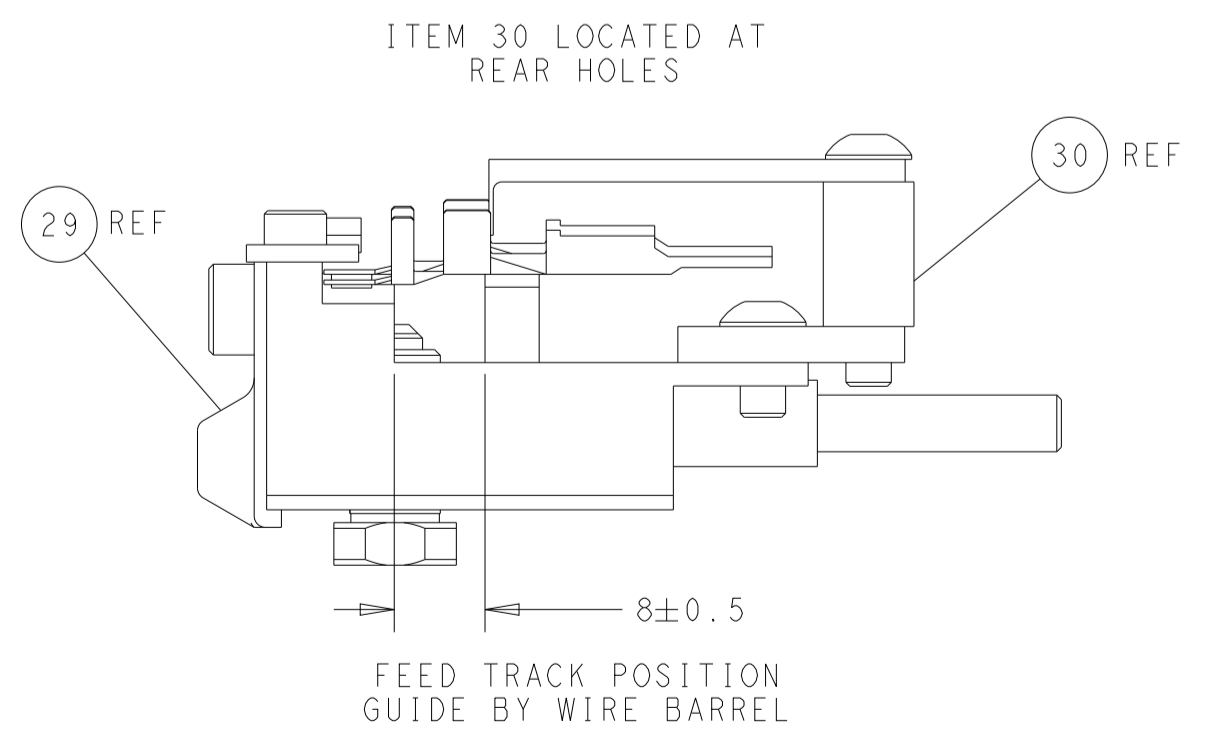
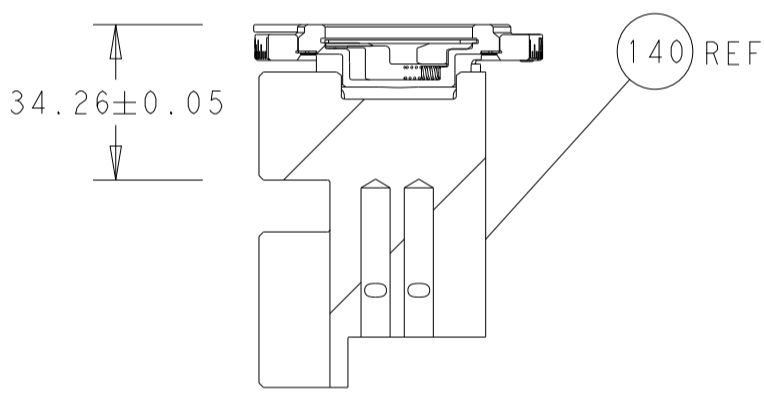
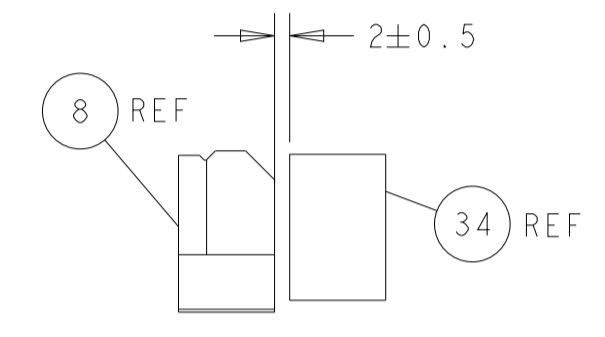
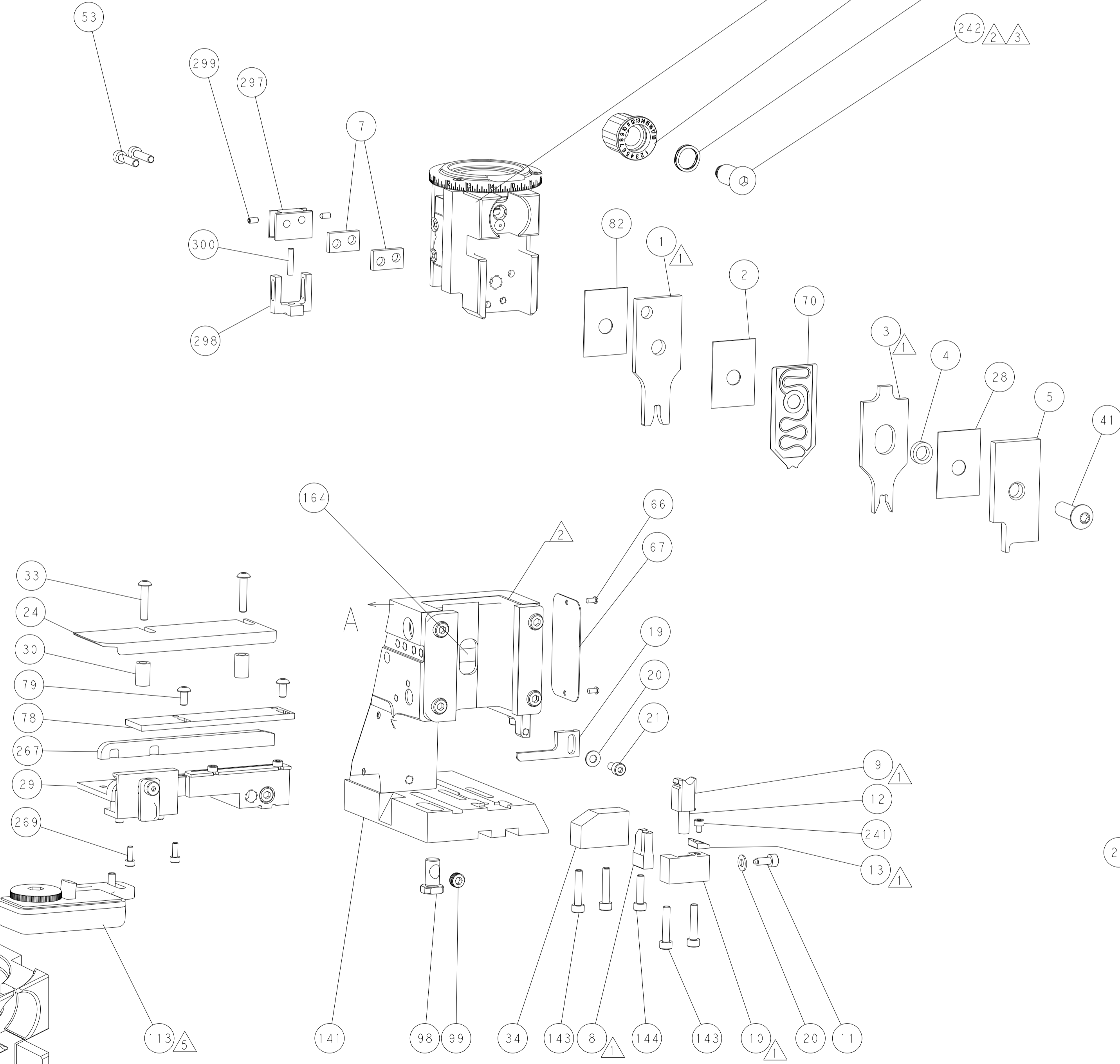
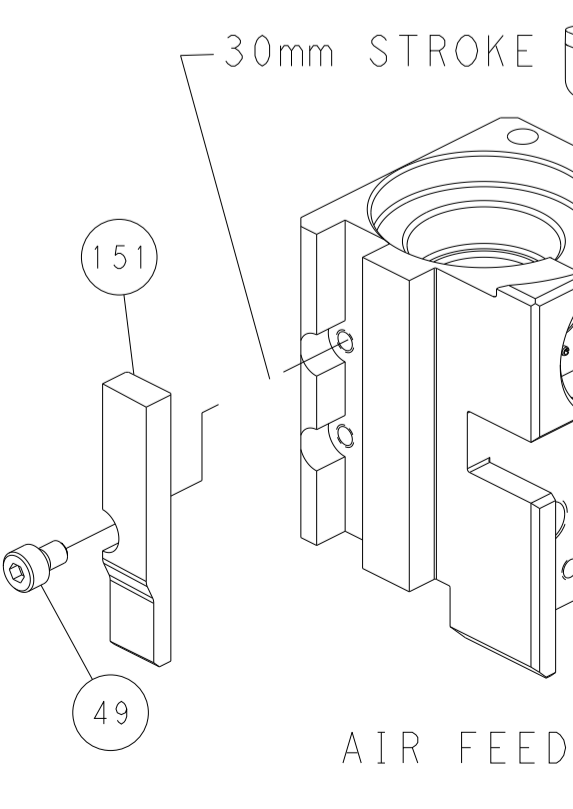
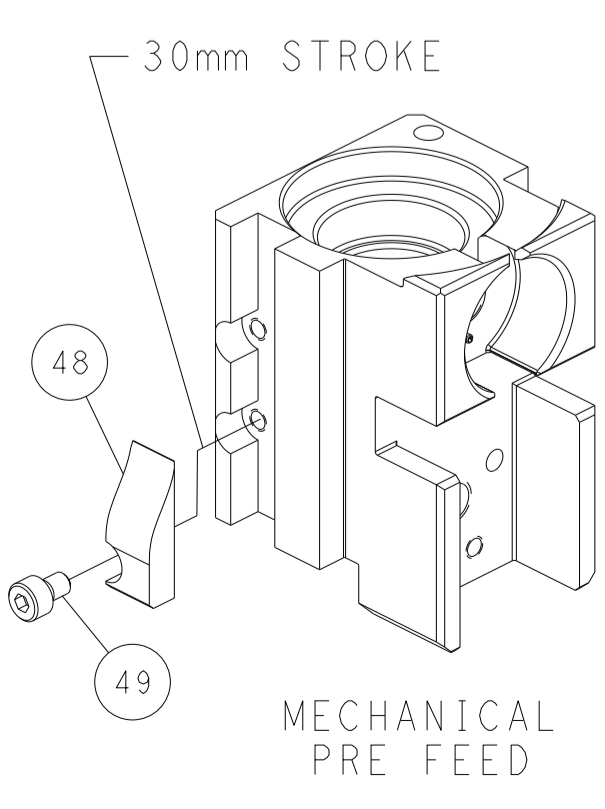
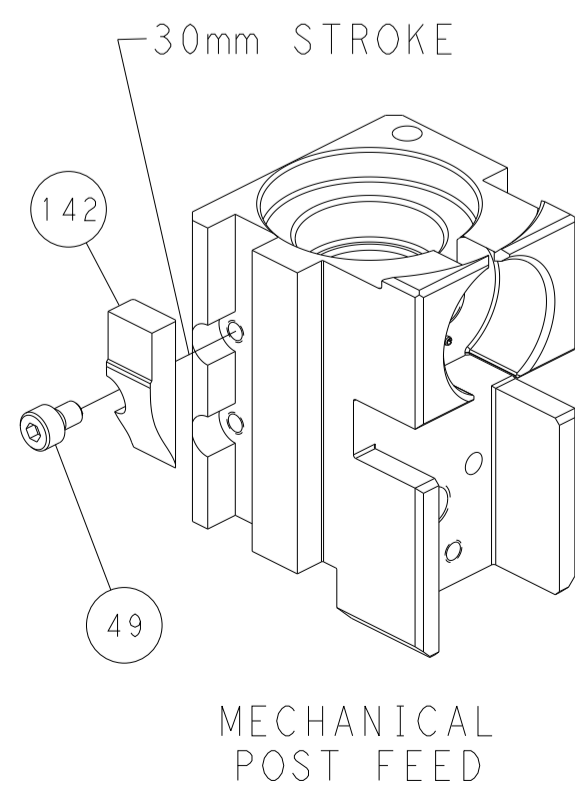
## PNEUMATIC



### FEED SPRING SETTING POSITION (SHOWN FROM REAR SIDE)



## CAM POSITIONS



**PACIFIC VERSION**  
 Shown on sheets 3 of 4 & 4 of 4  
 (Atlantic version shown on sheets 1 of 4 & 2 of 4)

|  |  |  |  |
|--|--|--|--|
| <small>THIS DRAWING IS UNPUBLISHED. RELEASED FOR PUBLICATION. ALL RIGHTS RESERVED. THIS DRAWING IS THE PROPERTY OF TYCO ELECTRONICS CORPORATION. IT IS TO BE USED ONLY FOR THE PURPOSES AND IN THE QUANTITIES SPECIFIED IN THE ORDER. IT IS TO BE RETURNED TO TYCO ELECTRONICS CORPORATION UPON THE COMPLETION OF THE PROJECT.</small> |  | DWN: H. HUANG 23JUL2018<br>CHK: L. ZHANG 23JUL2018<br>APVD: L. ZHANG 23JUL2018 | TE Connectivity<br>Harrisburg, PA 17105-3608 |
| DIMENSIONS: mm<br>TOLERANCES UNLESS OTHERWISE SPECIFIED:<br>0 PLC ±<br>1 PLC ±<br>2 PLC ±<br>3 PLC ±<br>4 PLC ±<br>ANGLES FINISH   | NAME: Ocean Side Feed Applicator<br>SIZE: A1<br>CAGE CODE: 00779<br>DRAWING NO: 2837363<br>SCALE: 1:2<br>SHEET: 4 OF 4<br>REV: C | RESTRICTED TO: -<br>Customer Accessible Production Drawing                     |  |