

ATLANTIC VERSION TERMINATOR INTERFACE ADAPTER	PART NUMBER	REVISION	DESCRIPTION	FEED TYPE	APPLICATOR STYLE CONVERSION CHART						
					CONVERT TO	PART NUMBERS REQUIRED					
	2837330-1	A	FINE CRIMP HEIGHT ADJUST	MECHANICAL	PNEUMATIC FEED	2119950-1	1338685-1	5-18022-5	2119641-1	2119799-1	2063440-1
	2837330-2	A	FINE CRIMP HEIGHT ADJUST	PNEUMATIC	SERVO LATCH PLATE	2119951-1	-	8-2837330-5	1901094-3	-	2168400-6 (QUANTITY 2)
					SMART APPLICATOR	2161326-1	-	8-2837330-4	-	-	
					MECHANICAL FEED	2119949-1	1338685-1	5-18022-5	2119653-1	-	-
	2837330-5	A	FINE CRIMP HEIGHT ADJUST	SERVO LATCH PLATE ⁴	SERVO LATCH PLATE	2119951-1	-	8-2837330-5	1901094-3	-	2168400-6 (QUANTITY 2)
					SMART APPLICATOR	2161326-1	-	8-2837330-4	-	-	
	2837330-6	A	NON-CRIMP HEIGHT ADJUST	SERVO LATCH PLATE ⁴	MECHANICAL FEED	2119949-1	1338685-1	5-18022-5	2119653-1	-	-
PNEUMATIC FEED					2119950-1	1338685-1	5-18022-5	2119641-1	2119799-1	2063440-1	
2837330-7	A	FINE CRIMP HEIGHT ADJUST	NONE	-	-	-	-	-	-	-	
7-2837330-7	A	CRIMP TOOLING KIT	-	-	-	-	-	-	-	-	

APPLICATOR DATA		
CRIMP	SIZE	TYPE
WIRE	1.27 mm [.050]	F
INSUL	2.10 mm [.083]	F

APPLICATOR INSTRUCTIONS 408-10389

TERMINAL DATA: NIPPON TERMINAL NIPPON CRIMP SPECIFICATION	
TERMINAL NAME: CONNECTOR TERMINAL	
WIRE STRIP LENGTH	TERMINAL INSULATION DIAMETER RANGE
3.00-3.50 mm [.118-.138 IN]	Ø1.30-1.70 mm [.051-.067 IN]
TERMINAL APPLICATION SPECIFICATION	172751-M2
TERMINALS APPLIED ⁴	
TE TERMINAL	NIPPON TERMINAL
3311253-1	172751-M2

WIRE SIZE	CRIMP HEIGHT mm [INCH]	CRIMP HEIGHT REFERENCE SETTING
0.30mm ²	0.78+/-0.03 [.031+/-0.001]	4.2
24 AWG	0.72+/-0.03 [.028+/-0.001]	4.8
26 AWG	0.67+/-0.03 [.026+/-0.001]	5.4

- RECOMMENDED SPARE PARTS
- GREASE BEARING SURFACES LIGHTLY
- 3. LUBRICATE DAILY PER THE APPLICATOR INSTRUCTION SHEET SUPPLIED WITH THE APPLICATOR.
- APPLICATOR SPECIFIC DATA TO BE ENTERED INTO BLANK MEMORY CHIP AT ASSEMBLY. SEE BELOW FOR PART NUMBER:
 MECHANICAL FEED WITH "SMART APPLICATOR" CONVERSION: 8-2837330-4
 PNEUMATIC FEED WITH "SMART APPLICATOR" CONVERSION: 8-2837330-4
 SERVO FEED WITH "FINE CRIMP HEIGHT ADJUST": 8-2837330-5
 SERVO FEED WITH "NON-CRIMP HEIGHT ADJUST": 8-2837330-6
- 5. ADJUSTMENT OF THE STRIPPER MAY BE REQUIRED WHEN MOVING THE APPLICATOR BETWEEN BENCH AND LEADMAKER APPLICATIONS.
- APPLY PART NUMBER 1-23419-5 LOCTITE TO THREADS OF ITEM 62. APPLY PART NUMBER 2-23419-6 LOCTITE TO THREADS OF ITEM 242. FOR -6 ONLY APPLY PART NUMBER 1-23419-5 LOCTITE TO THREADS OF ITEM 37.
- GREASE THREADS, GROOVE AND O-RING ON ITEMS 35 & 252.
- MAGNET, ITEM 166 MUST BE ORIENTED CORRECTLY IN ORDER TO PROPERLY ACTUATE THE COUNTER.
- CRIMP HEIGHT REFERENCE SETTING WAS THE SETTING USED WHEN THE APPLICATOR WAS QUALIFIED AT THE FACTORY. ADJUSTMENT MAY BE NECESSARY WHEN RUNNING APPLICATOR IN THE FIELD.
- SPARE FEED CAM STORAGE LOCATION REFER TO INSTRUCTION SHEET FOR ADDITIONAL INFORMATION.
- TO CONVERT THE APPLICATOR TO A NON-CARRIER CUTTING STYLE, REMOVE ITEM 13 AND ATTACH TO THE LOCATION ON THE BACK SIDE OF THE HOUSING. REFER TO INSTRUCTION SHEET FOR ADDITIONAL INFORMATION.
- WHEN ASSEMBLING A NON CRIMP HEIGHT ADJUST APPLICATOR (-6) USE SHIMS FROM ITEM 260 TO ACHIEVE A NOMINAL SHIM HEIGHT OF 5.02.
- 13. UNLESS SPECIFIED OTHERWISE TORQUE VALUES SHALL BE USED PER DOCUMENT 101-35000.
- TERMINAL LUBRICANT IS RECOMMENDED.

***WARNING**
 ON INSTALLATION, SET WIRE DISC, ITEM 40 TO LARGEST WIRE SIZE SETTING. USE OF SETTINGS BELOW MINIMUM REQUIRED CRIMP HEIGHT SETTING WILL CAUSE DAMAGE TO CRIMP TOOLING.

ATLANTIC VERSION
 Shown on sheets 1 of 4 & 2 of 4
 (Pacific version shown on sheets 3 of 4 & 4 of 4)

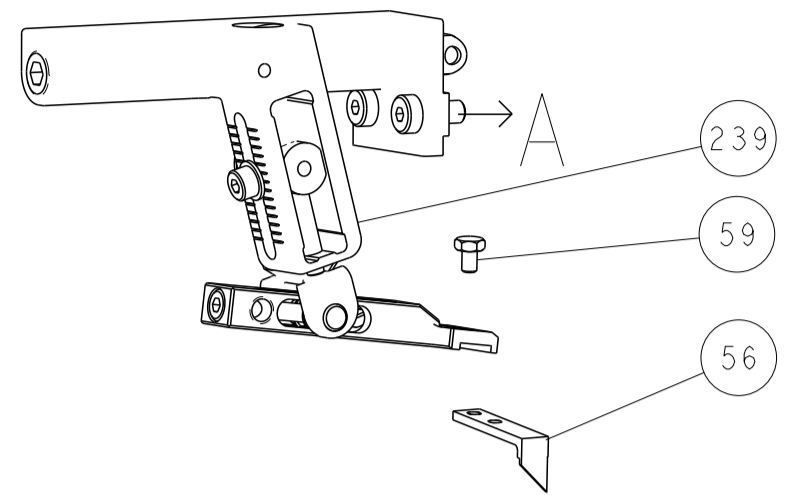
SET UP GAUGE		LOC	DIST	REVISIONS			
2119599-1		A	66	P	DATE	OWN	APVD
				1	DEVELOPMENT	05JUL2018	FZ KZ
				A	RELEASED	15AUG2018	TB GB

P	LTN	DESCRIPTION	DATE	OWN	APVD
-	-	1 - - -	2119957-2	APPLICATOR SHIM PACK	260
-	1	- 1 1 1	8-21084-0	O-RING, .676 ID, .070 DIA. MAT.	252
-	-	- - 1 -	2119640-1	PUSH ROD, AIR FEED	250
-	-	- - 1 -	1803259-1	BUSHING, FLANGED	249
-	-	- - 1 -	2119641-1	FEED CAM, AIR FEED	248
-	1	- 1 1 1	2119798-1	DETENT PIN	247
-	1	- 1 1 1	1-22279-3	SPRING, COMPRESSION	246
-	-	1 - - -	2119758-1	RAM, AMP STYLE, SIDE FEED, NON-ADJ.	245
-	1	1 1 1 1	2119082-4	CAM, SNAIL, INSULATION ADJUSTMENT	244
-	1	1 1 1 1	2079764-1	WASHER, WAVE SPRING, CREST-TO-CREST	243
-	1	1 1 1 1	2119083-1	RETAINER, INSULATION DIAL	242
-	1	1 1 1 1	7-18023-7	SCR, SKT HD CAP M3 X 4.0	241
-	-	2 2 - -	2168400-6	SHCS, LOW HEAD, RoHS, M5 X 16	240
-	-	- - - 1	2119580-1	MECHANICAL FEED ASSEMBLY	239
-	-	- - 1 -	2063440-1	AIR FEED MODULE	238
-	-	1 1 - -	2119740-2	TAG, IDENTIFICATION	213
-	-	1 1 - -	1901094-3	SPACER, FEEDER	198
-	-	- - 2 -	21045-3	RING, RETAIN, EXTERN, 3/16 CRESCENT	172
-	1	1 1 1 1	994969-1	MAGNET, RARE EARTH HIGH ENERGY	166
-	REF	REF REF REF REF	994970-2	COUNTER, MAGNETIC	164
-	-	- - 1 -	240638-1	SPRING, FEED FINGER	163
-	-	- - 1 -	3-23627-7	PIN, RETAIN, GRVD, 3/16 X .854	137
-	-	- - 1 -	2119799-1	HOLDER, FEED FINGER, AF	136
-	-	REF REF - -	SEE NOTE 4	MEMORY CHIP, PROGRAMMED	135
-	-	1 1 - -	1633743-1	SERVO FEED LATCH ASM	133
-	-	REF REF - -	2119944-1	FEED FINGER ASSEMBLY, SF	117
-	1	1 1 1 1	2119955-1	ASSY, LUBRICATOR, SIDE FEED	113
-	1	1 1 1 1	455888-6	SPACER, CRIMPER	82
-	1	1 1 1 1	2119956-1	DOCUMENTATION PACKAGE	71
-	1	- - 1 1	2119740-1	TAG, IDENTIFICATION	67
-	2	2 2 2 2	2168078-1	SCREW, DRIVE, RH, RoHS, 2 x .188	66
-	1	- 1 1 1	2119793-1	LIMITER, ADJUSTMENT BOLT	63
-	3	- 3 3 3	992763-5	SCR, SET, SOC, CONE PNT, M3 X 4.0	62
-	1	1 1 1 1	2079383-4	SCR, BHSC, RoHS (M4 X 8)	60
-	-	- - 1 1	5-18022-5	SCR, HEX HD CAP, M4 X 6.0	59
-	-	- - 1 1	1338685-1	PAWL, FEED	56
-	4	4 4 4 4	2168400-1	SHCS, LOW HEAD, RoHS, M4 X 12	54
-	2	2 2 2 2	1-2168083-0	SCR, SKT HD CAP, RoHS, M4 X 10	53
-	1	1 1 1 1	1803382-6	HOLD DOWN, SPRING LOADED	50
-	-	- - 1 2	18023-9	SCR, SKT HD CAP M4 X 6.0	49
-	-	- - - 1	2119652-1	FEED CAM, PRE FEED	48
-	-	- - - 1	2119653-1	FEED CAM, POST FEED	47
-	1	1 1 1 1	2119656-9	APPLICATOR BASIC ASSEMBLY, SF	46
-	1	- 1 1 1	2119370-1	RAM, AMP STYLE, SIDE FEED	44
-	1	1 1 1 1	2079383-7	SCR, BHSC, RoHS (M8 X 25)	41
-	1	- 1 1 1	2119645-1	DISC, NUMBERED FA WIRE ADJUSTMENT	40
-	1	- 1 1 1	2119957-1	APPLICATOR SHIM PACK	39
-	1	1 1 1 1	1-2119644-4	RAM WASHER, PRECISION	38
-	1	1 1 1 1	2119085-1	FA HEAD, ATLANTIC STYLE	37
-	1	- 1 1 1	2119092-1	BOLT, ADJUSTMENT	35
-	1	1 1 1 1	1752356-1	SUPPORT, TERMINAL	34
-	2	2 2 2 2	2079383-5	SCR, BHSC, RoHS (M4 X 20)	33
-	1	1 1 1 1	2161328-1	HEX HEAD, FLANGED, M5 X 8mm LONG	32
-	1	1 1 1 1	1320908-6	SPACER, STRIP GUIDE	30
-	1	1 1 1 1	2119959-1	ASSEMBLY, STRIP GUIDE	29
-	1	1 1 1 1	455888-3	SPACER, CRIMPER	28
-	1	1 1 1 1	1320928-2	STRIP GUIDE	24
-	1	1 1 1 1	2168083-2	SCR, SKT HD CAP, RoHS, M4 X 8.0	21
-	2	2 2 2 2	1-18028-2	WASHER, FLAT, REG M4	20
-	1	1 1 1 1	2119533-1	STRIPPER, SIDE FEED	19
-	1	1 1 1 1	2119806-1	INSERT, SHEAR	13
-	1	1 1 1 1	3-22280-3	SPRING, COMPRESSION	12
-	1	1 1 1 1	1-356885-4	STOP, SHEAR	11
-	1	1 1 1 1	2119805-1	SHEAR HOLDER, FRONT	10
-	1	1 1 1 1	1803095-1	FLOATING SHEAR, FRONT	9
-	1	1 1 1 1	1-1803512-5	ANVIL, COMBINATION	8
-	-	- - - -	-	-	7
-	-	- - - -	-	-	6
-	1	1 1 1 1	2119757-1	DEPRESSOR, SHEAR	5
-	1	1 1 1 1	2-238011-0	BLOCK, CRIMPER SPACER	4
-	1	1 1 1 1	5-1803246-6	CRIMPER, INSULATION F PREMIUM	3
-	1	1 1 1 1	455888-4	SPACER, CRIMPER	2
-	1	1 1 1 1	2-568176-5	CRIMPER, WIRE	1

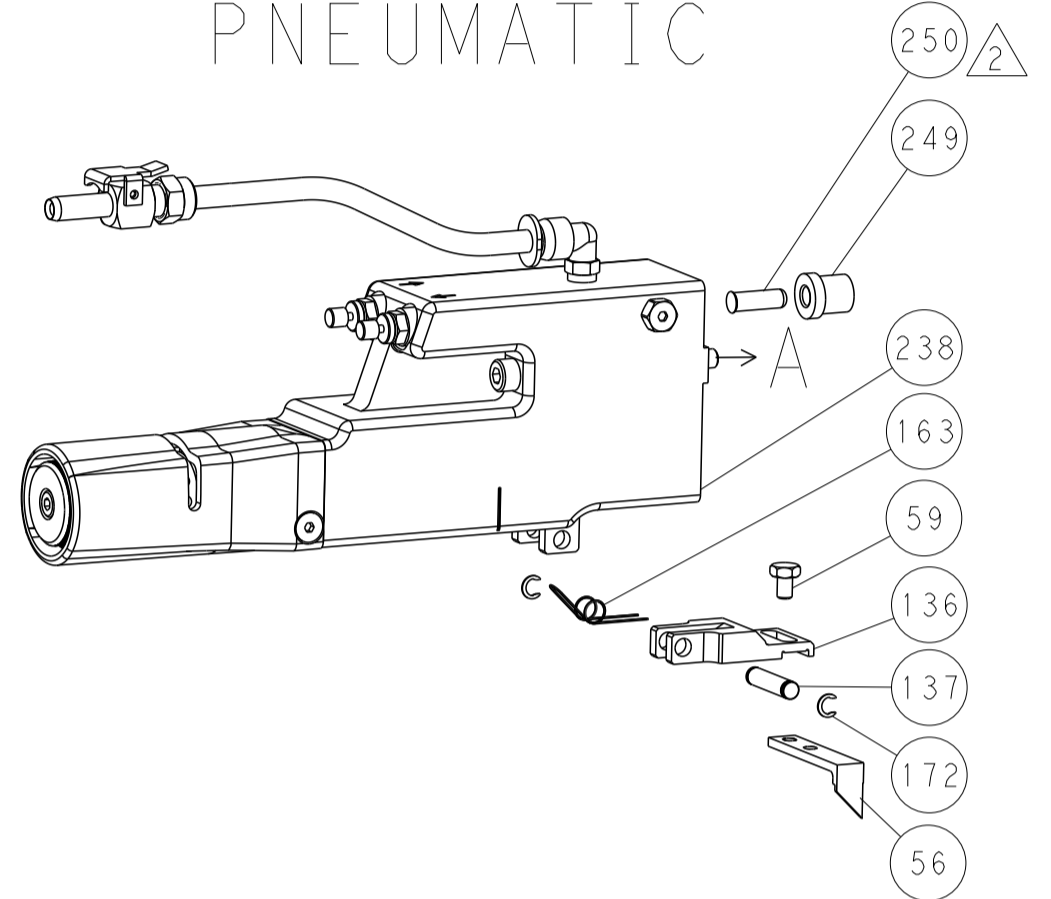
DIMENSIONS:		TOLERANCES UNLESS OTHERWISE SPECIFIED:		MATERIAL:		FINISH:		WEIGHT:		SCALE:	
mm	0 PLC ±	1 PLC ±	2 PLC ±	3 PLC ±	4 PLC ±	ANGLES	FINISH	Customer Accessible Production Drawing	SCALE	SHEET	REV
								00779	1:2	1 of 4	A

LOC	DIST	REV	DATE	BY	APP'D
A	66				
REVISIONS			DATE	BY	APP'D
- SEE SHEET 1			-	-	-

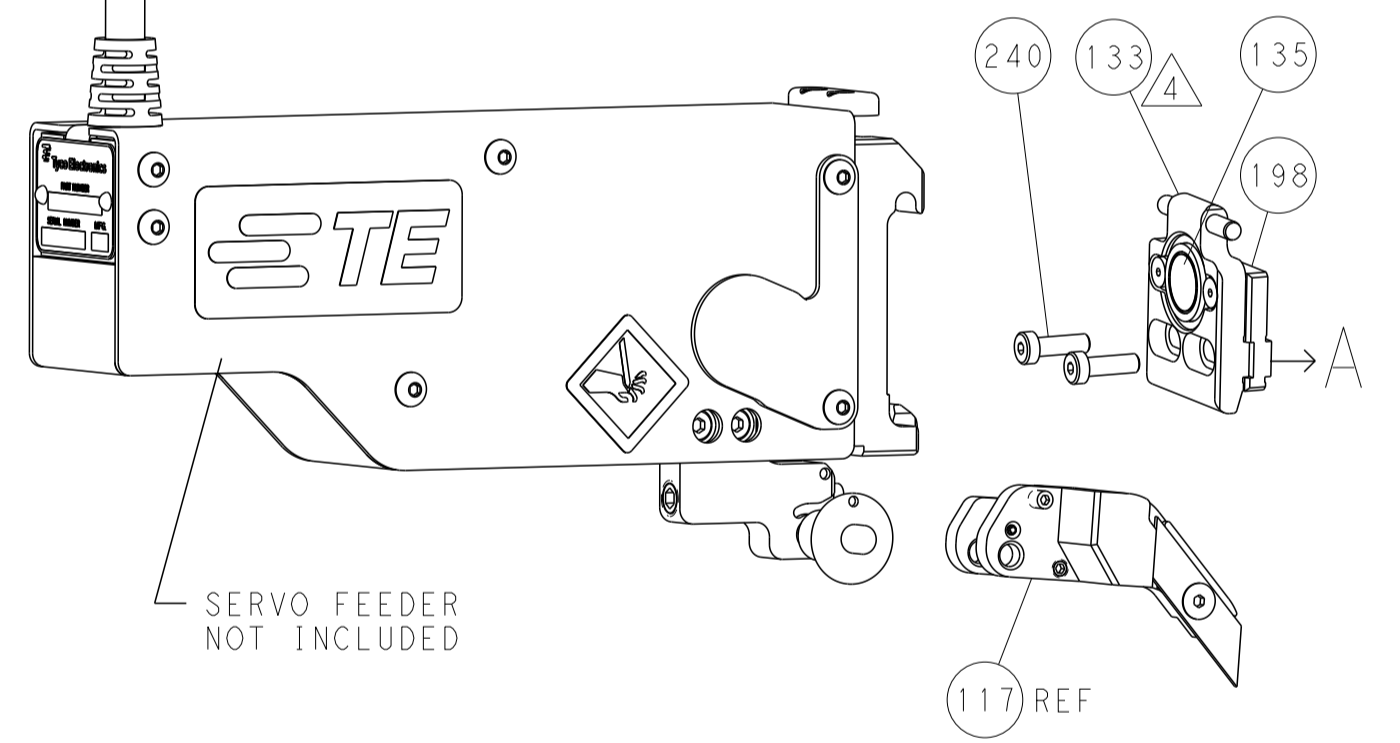
FEED TYPE MECHANICAL



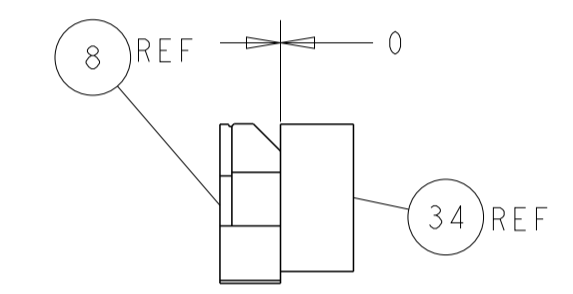
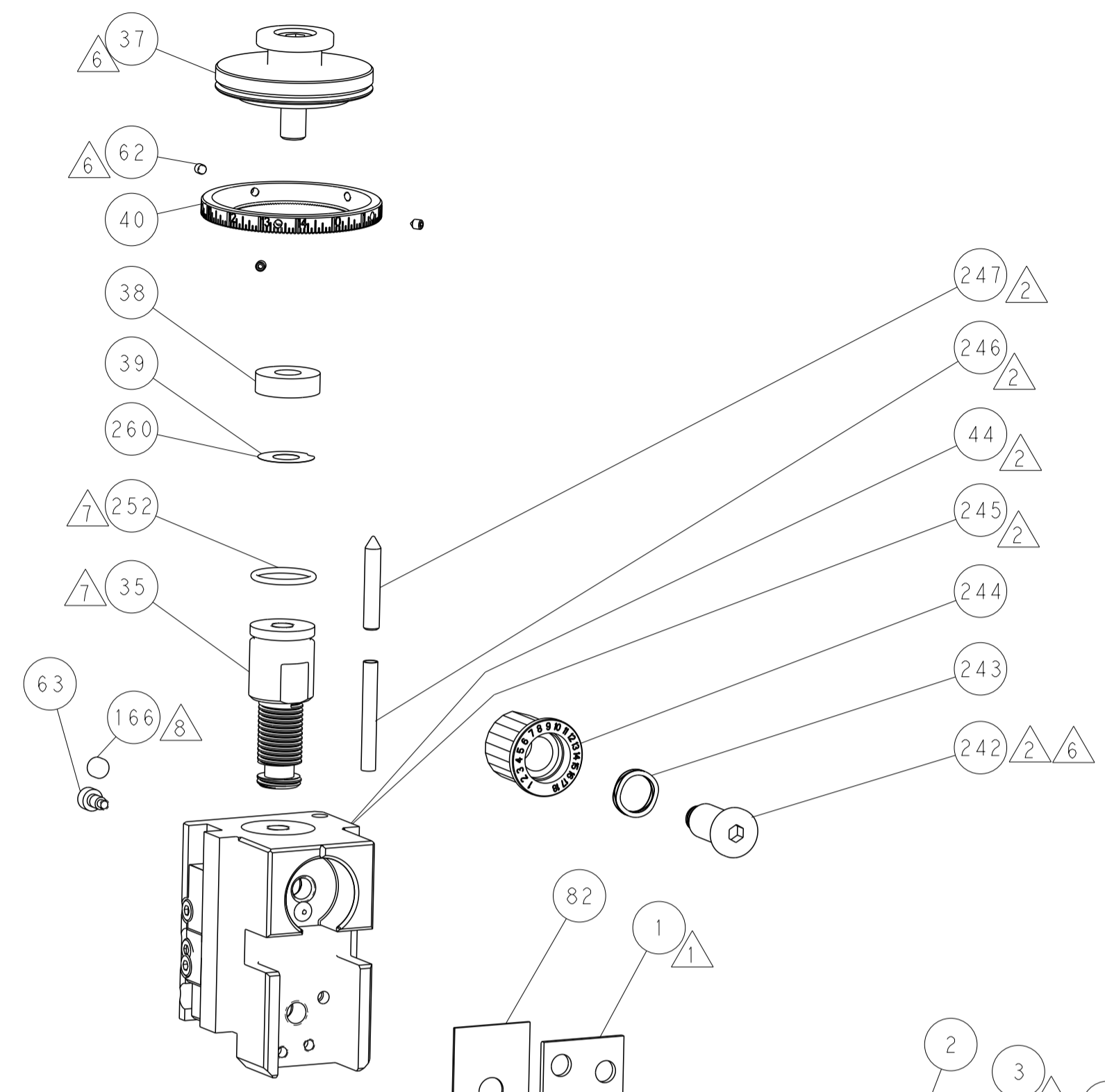
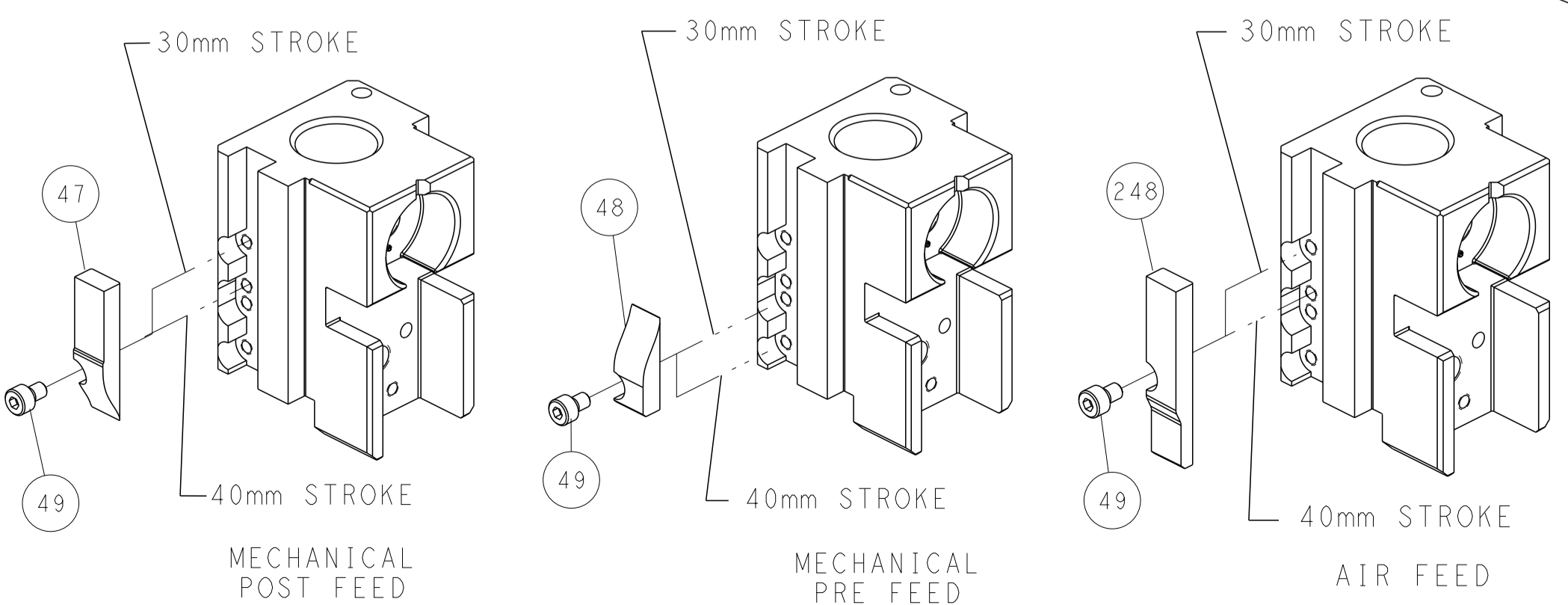
PNEUMATIC



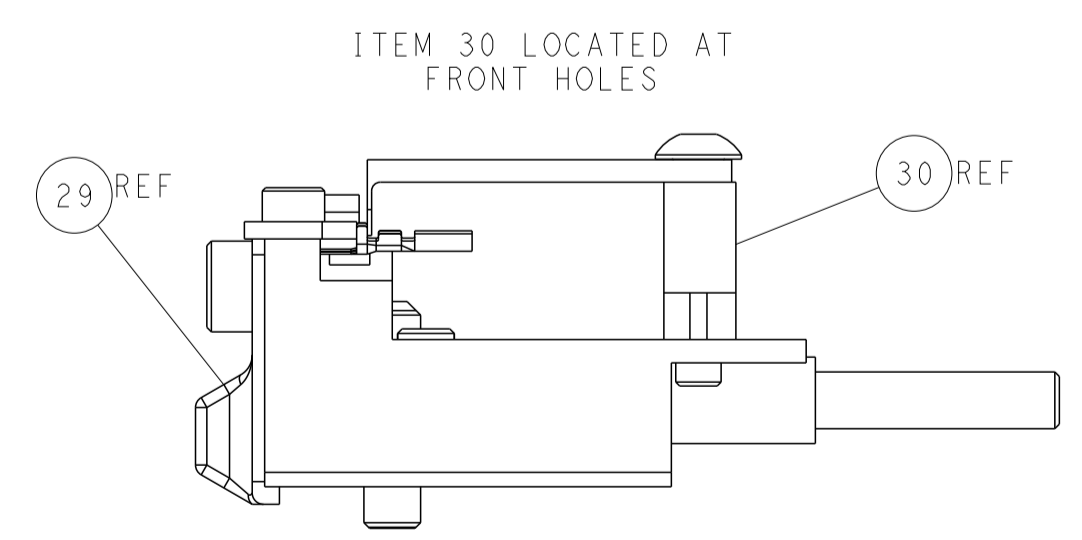
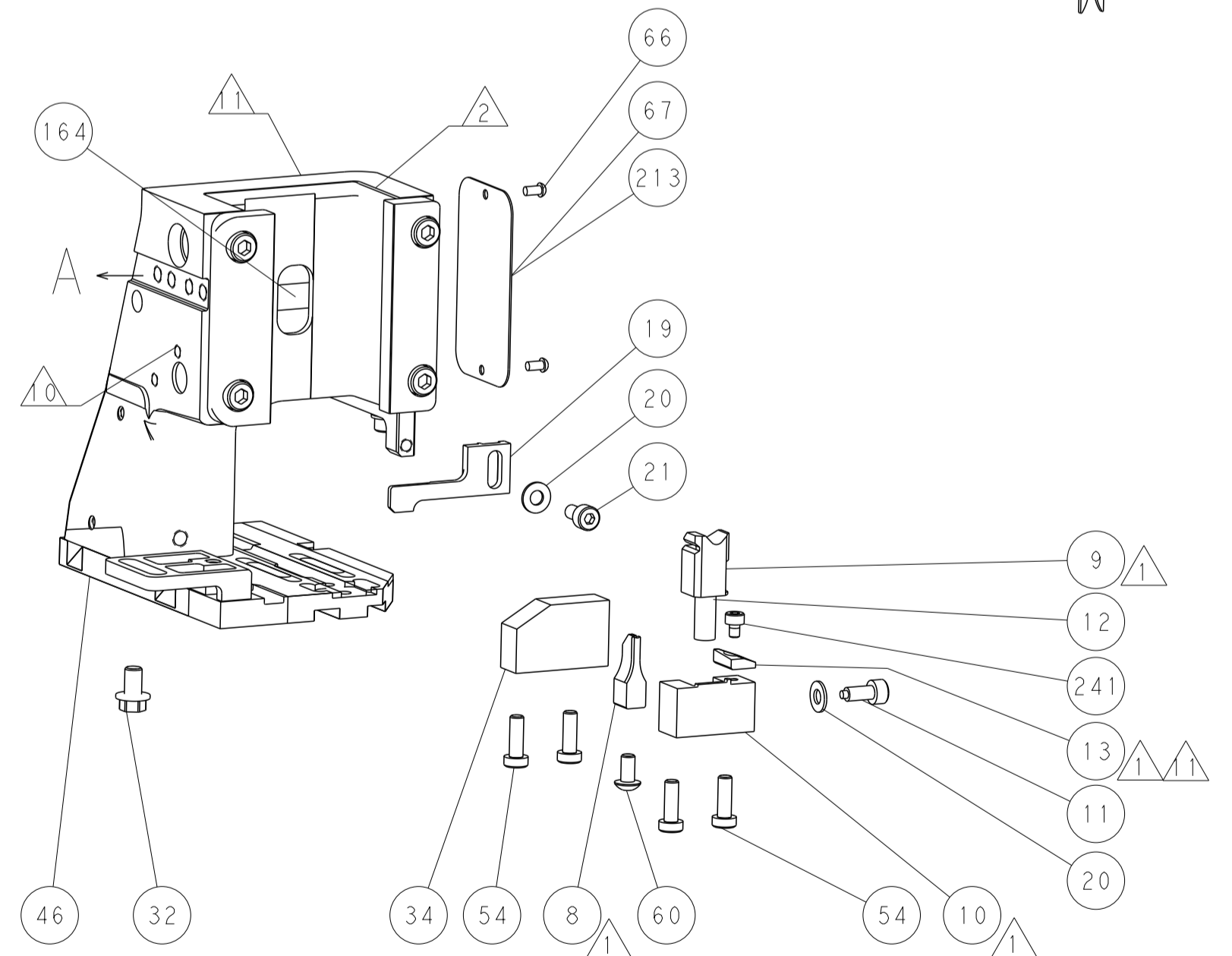
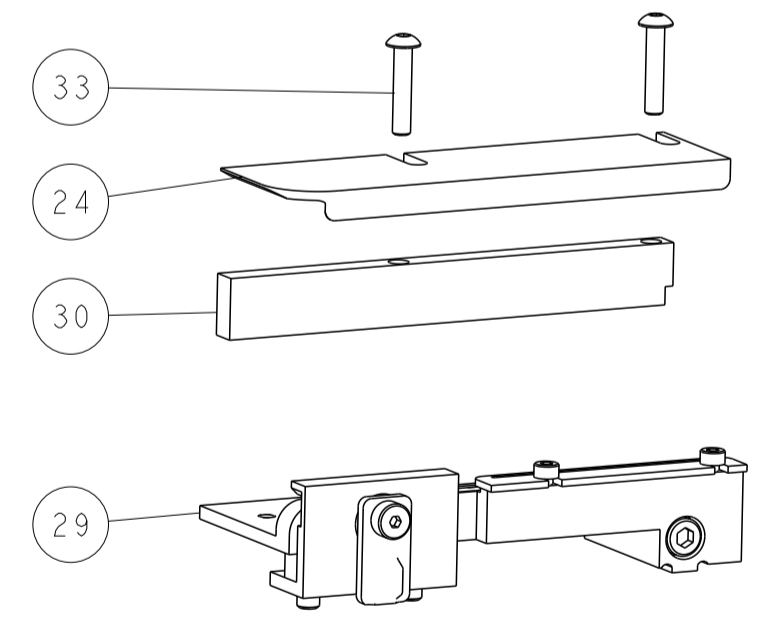
SERVO LATCH PLATE



CAM POSITIONS



TERMINAL SUPPORT LOCATION



ITEM 30 LOCATED AT FRONT HOLES

FEED TRACK POSITION GUIDE BY INSULATION BARREL

ATLANTIC VERSION
 Shown on sheets 1 of 4 & 2 of 4
 (Pacific version shown on sheets 3 of 4 & 4 of 4)

DIMENSIONS:		TOLERANCES UNLESS OTHERWISE SPECIFIED:		DWG E. ZHANG 05JUL2018		TE Connectivity Harrisburg, PA 17105-3608	
mm		0 PLC ±		CHK K. ZHANG 05JUL2018		NAME	
Ø		1 PLC ±		APP'D K. ZHANG 05JUL2018		Ocean Side Feed Applicator	
H		2 PLC ±		PRODUCT SPEC		SIZE	
L		3 PLC ±		APPLICATION SPEC		CAGE CODE DRAWING NO	
R		4 PLC ±		WEIGHT		RESTRICTED TO	
S		5 PLC ±		MATERIAL		A1 00779 ©=2837330	
T		6 PLC ±		FINISH		Customer Accessible Production Drawing	
U		7 PLC ±		SCALE		1:2 SHEET 2 OF 4 REV A	
V		8 PLC ±		SCALE		1:2 SHEET 2 OF 4 REV A	

PACIFIC VERSION TERMINATOR INTERFACE ADAPTER	PART NUMBER	REVISION	DESCRIPTION	FEED TYPE	APPLICATOR STYLE CONVERSION CHART						
					CONVERT TO	PART NUMBERS REQUIRED					
	2-2837330-1	A	FINE CRIMP HEIGHT ADJUST	MECHANICAL	PNEUMATIC FEED	2119950-1	1338685-1	5-18022-5	2119641-2	2119799-1	2063440-1
					SERVO LATCH PLATE	2119951-1	-	8-2837330-5	1901094-3	-	2168400-6 (QUANTITY 2)
					SMART APPLICATOR	2161326-1	-	8-2837330-4	-	-	-
	2-2837330-2	A	FINE CRIMP HEIGHT ADJUST	PNEUMATIC	MECHANICAL FEED	2119949-1	1338685-1	5-18022-5	2119653-2	-	-
					SERVO LATCH PLATE	2119951-1	-	8-2837330-5	1901094-3	-	2168400-6 (QUANTITY 2)
					SMART APPLICATOR	2161326-1	-	8-2837330-4	-	-	-
	2-2837330-5	A	FINE CRIMP HEIGHT ADJUST	SERVO LATCH PLATE ⁴	MECHANICAL FEED	2119949-1	1338685-1	5-18022-5	2119653-2	-	-
					PNEUMATIC FEED	2119950-1	1338685-1	5-18022-5	2119641-2	2119799-1	2063440-1
	2-2837330-7	A	FINE CRIMP HEIGHT ADJUST	NONE	-	-	-	-	-	-	-
	7-2837330-7	A	CRIMP TOOLING KIT	-	-	-	-	-	-	-	-

APPLICATOR DATA		
CRIMP WIRE	SIZE	TYPE
1.27 mm [.050]		F
INSUL	2.10 mm [.083]	F
APPLICATOR INSTRUCTIONS 408-10389		

TERMINAL DATA: NIPPON TERMINAL NIPPON CRIMP SPECIFICATION	
TERMINAL NAME: CONNECTOR TERMINAL	
WIRE STRIP LENGTH 3.00-3.50 mm [.118-.138 IN]	TERMINAL INSULATION DIAMETER RANGE Ø1.30-1.70 mm [.051-.067 IN]
TERMINAL APPLICATION SPECIFICATION 172751-M2	-
TERMINALS APPLIED ³	
TE TERMINAL 3311253-1	NIPPON TERMINAL 172751-M2

WIRE SIZE	CRIMP HEIGHT mm [INCH]	CRIMP HEIGHT REFERENCE SETTING
0.30mm2	0.78+/-0.03 [.031+/- .001]	4.2
24 AWG	0.72+/-0.03 [.028+/- .001]	4.8
26 AWG	0.67+/-0.03 [.026+/- .001]	5.4

- RECOMMENDED SPARE PARTS
- GREASE BEARING SURFACES LIGHTLY
- 3. LUBRICATE DAILY PER THE APPLICATOR INSTRUCTION SHEET SUPPLIED WITH THE APPLICATOR.
- APPLICATOR SPECIFIC DATA TO BE ENTERED INTO BLANK MEMORY CHIP AT ASSEMBLY. SEE BELOW FOR PART NUMBER:
 MECHANICAL FEED WITH "SMART APPLICATOR" CONVERSION: 8-2837330-4
 PNEUMATIC FEED WITH "SMART APPLICATOR" CONVERSION: 8-2837330-4
 SERVO FEED WITH "FINE CRIMP HEIGHT ADJUST": 8-2837330-5
- 5. ADJUSTMENT OF THE STRIPPER MAY BE REQUIRED WHEN MOVING THE APPLICATOR BETWEEN BENCH AND LEADMAKER APPLICATIONS.
- APPLY PART NUMBER 1-23419-5 LOCTITE TO THREADS OF ITEM 62.
 APPLY PART NUMBER 2-23419-6 LOCTITE TO THREADS OF ITEM 242.
- GREASE THREADS, GROOVE AND O-RING ON ITEMS 139 & 152.
- MAGNET MUST BE ORIENTED CORRECTLY IN ORDER TO PROPERLY ACTUATE THE COUNTER.
- CRIMP HEIGHT REFERENCE SETTING WAS THE SETTING USED WHEN THE APPLICATOR WAS QUALIFIED AT THE FACTORY. ADJUSTMENT MAY BE NECESSARY WHEN RUNNING APPLICATOR IN THE FIELD.
- SPARE FEED CAM STORAGE LOCATION REFER TO INSTRUCTION SHEET FOR ADDITIONAL INFORMATION.
- TO CONVERT THE APPLICATOR TO A NON-CARRIER CUTTING STYLE, REMOVE ITEM 13 AND ATTACH TO THE LOCATION ON BACK SIDE OF THE HOUSING. REFER TO INSTRUCTION SHEET FOR ADDITIONAL INFORMATION.
- 12. UNLESS SPECIFIED OTHERWISE TORQUE VALUES SHALL BE USED PER DOCUMENT 101-35000.
- TERMINAL LUBRICANT IS RECOMMENDED.

***WARNING**
 ON INSTALLATION, SET WIRE DISC, ITEM 40 TO LARGEST WIRE SIZE SETTING. USE OF SETTINGS BELOW MINIMUM REQUIRED CRIMP HEIGHT SETTING WILL CAUSE DAMAGE TO CRIMP TOOLING.

PACIFIC VERSION
 Shown on sheets 3 of 4 & 4 of 4
 (Atlantic version shown on sheets 1 of 4 & 2 of 4)

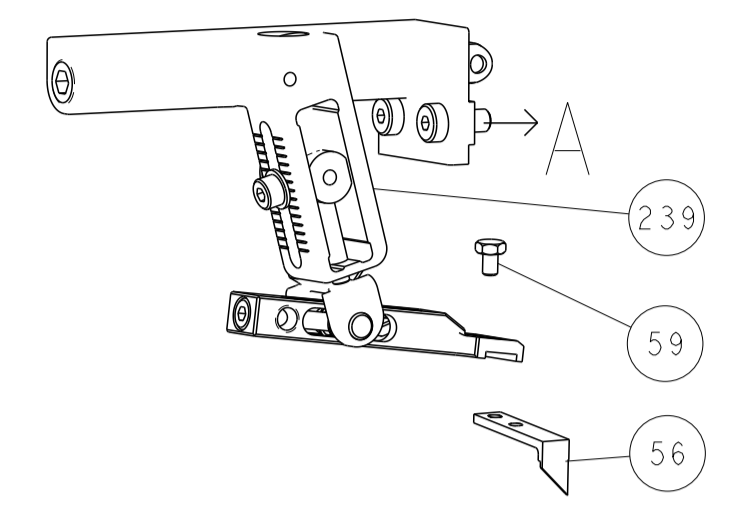
SET UP GAUGE	LOC	DIST	REVISIONS					
2119599-1	A	66	P	LTN	DESCRIPTION	DATE	OWN	APVD
			-	-	SEE SHEET 1	-	-	-

-	1	1	1	1	2119782-1	FINE ADJUST HEAD ASM, PACIFIC STYLE	251
-	-	-	1	-	2119640-1	PUSH ROD, AIR FEED	250
-	-	-	1	-	1803259-1	BUSHING, FLANGED	249
-	1	1	1	1	1-22279-3	SPRING, COMPRESSION	246
-	1	1	1	1	2119082-4	CAM, SNAIL, INSULATION ADJUSTMENT	244
-	1	1	1	1	2079764-1	WASHER, WAVE SPRING, CREST-TO-CREST	243
-	1	1	1	1	2119083-1	RETAINER, INSULATION DIAL	242
-	1	1	1	1	7-18023-7	SCR, SKT HD CAP M3 X 4.0	241
-	-	2	-	-	2168400-6	SHCS, LOW HEAD, RoHS, M5 X 16	240
-	-	-	-	1	2119580-1	MECHANICAL FEED ASSEMBLY	239
-	-	-	1	-	2063440-1	AIR FEED MODULE	238
-	-	1	-	-	2119740-2	TAG, IDENTIFICATION	213
-	-	1	-	-	1901094-3	SPACER, FEEDER	198
-	-	-	2	-	21045-3	RING, RETAIN, EXTERN, 3/16 CRESCENT	172
-	1	1	1	1	994969-1	MAGNET, RARE EARTH HIGH ENERGY	166
-	REF	REF	REF	REF	994970-2	COUNTER, MAGNETIC	164
-	-	-	1	-	240638-1	SPRING, FEED FINGER	163
-	1	1	1	1	8-21084-1	O-RING, .801 ID, .070 DIA. MAT.	152
-	-	-	1	-	2119641-2	FEED CAM, AIR FEED	151
-	1	1	1	1	2119798-2	DETENT PIN	145
-	1	1	1	1	2079383-8	SCR, BHSC, RoHS (M4 X 16)	144
-	4	4	4	4	2168400-5	SHCS, LOW HEAD, RoHS, M4 X 20	143
-	-	-	-	1	2119653-2	FEED CAM, POST FEED	142
-	1	1	1	1	1-2119656-0	APPLICATOR BASIC ASSEMBLY, SF	141
-	1	1	1	1	2119650-1	RAM, ASIAN STYLE, SIDE FEED	140
-	1	1	1	1	2119092-2	BOLT, ADJUSTMENT	139
-	-	-	1	-	3-23627-7	PIN, RETAIN, GRVD, 3/16 X .854	137
-	-	-	1	-	2119799-1	HOLDER, FEED FINGER, AF	136
-	-	REF	-	-	SEE NOTE 4	MEMORY CHIP, PROGRAMMED	135
-	-	1	-	-	1633743-1	SERVO FEED LATCH ASM	133
-	-	REF	-	-	2119944-1	FEED FINGER ASSEMBLY, SF	117
-	1	1	1	1	2119955-1	ASSY, LUBRICATOR, SIDE FEED	113
-	1	1	1	1	455888-6	SPACER, CRIMPER	82
-	1	1	1	1	2119956-1	DOCUMENTATION PACKAGE	71
-	1	-	1	1	2119740-1	TAG, IDENTIFICATION	67
-	2	2	2	2	2168078-1	SCREW, DRIVE, RH, RoHS, 2 x .188	66
-	1	1	1	1	2119793-1	LIMITER, ADJUSTMENT BOLT	63
-	3	3	3	3	992763-5	SCR, SET, SOC, CONE PNT, M3 X 4.0	62
-	-	-	1	1	5-18022-5	SCR, HEX HD CAP, M4 X 6.0	59
-	-	-	1	1	1338685-1	PAWL, FEED	56
-	2	2	2	2	1-2168083-0	SCR, SKT HD CAP, RoHS, M4 X 10	53
-	1	1	1	1	1803382-6	HOLD DOWN, SPRING LOADED	50
-	-	-	1	2	18023-9	SCR, SKT HD CAP M4 X 6.0	49
-	-	-	-	1	2119652-1	FEED CAM, PRE FEED	48
-	1	1	1	1	2079383-7	SCR, BHSC, RoHS (M8 X 25)	41
-	1	1	1	1	2119645-1	DISC, NUMBERED FA WIRE ADJUSTMENT	40
-	1	1	1	1	2119957-1	APPLICATOR SHIM PACK	39
-	1	1	1	1	1-2119644-4	RAM WASHER, PRECISION	38
-	1	1	1	1	1752356-1	SUPPORT, TERMINAL	34
-	2	2	2	2	2079383-5	SCR, BHSC, RoHS (M4 X 20)	33
-	1	1	1	1	2161328-1	HEX HEAD, FLANGED, M5 x 8mm LONG	32
-	1	1	1	1	1320908-6	SPACER, STRIP GUIDE	30
-	1	1	1	1	2119959-1	ASSEMBLY, STRIP GUIDE	29
-	1	1	1	1	455888-3	SPACER, CRIMPER	28
-	1	1	1	1	1320928-2	STRIP GUIDE	24
-	1	1	1	1	2168083-2	SCR, SKT HD CAP, RoHS, M4 X 8.0	21
-	2	2	2	2	1-18028-2	WASHER, FLAT, REG M4	20
-	1	1	1	1	2119533-1	STRIPPER, SIDE FEED	19
-	1	1	1	1	2119806-1	INSERT, SHEAR	13
-	1	1	1	1	3-22280-3	SPRING, COMPRESSION	12
-	1	1	1	1	1-356885-4	STOP, SHEAR	11
-	1	1	1	1	2119805-1	SHEAR HOLDER, FRONT	10
-	1	1	1	1	1803095-1	FLOATING SHEAR, FRONT	9
-	1	1	1	1	1-1803512-5	ANVIL, COMBINATION	8
-	-	-	-	-	-	-	7
-	-	-	-	-	-	-	6
-	1	1	1	1	2119757-1	DEPRESSOR, SHEAR	5
-	1	1	1	1	2-238011-0	BLOCK, CRIMPER SPACER	4
-	1	1	1	1	5-1803246-6	CRIMPER, INSULATION F PREMIUM	3
-	1	1	1	1	455888-4	SPACER, CRIMPER	2
-	1	1	1	1	2-568176-5	CRIMPER, WIRE	1

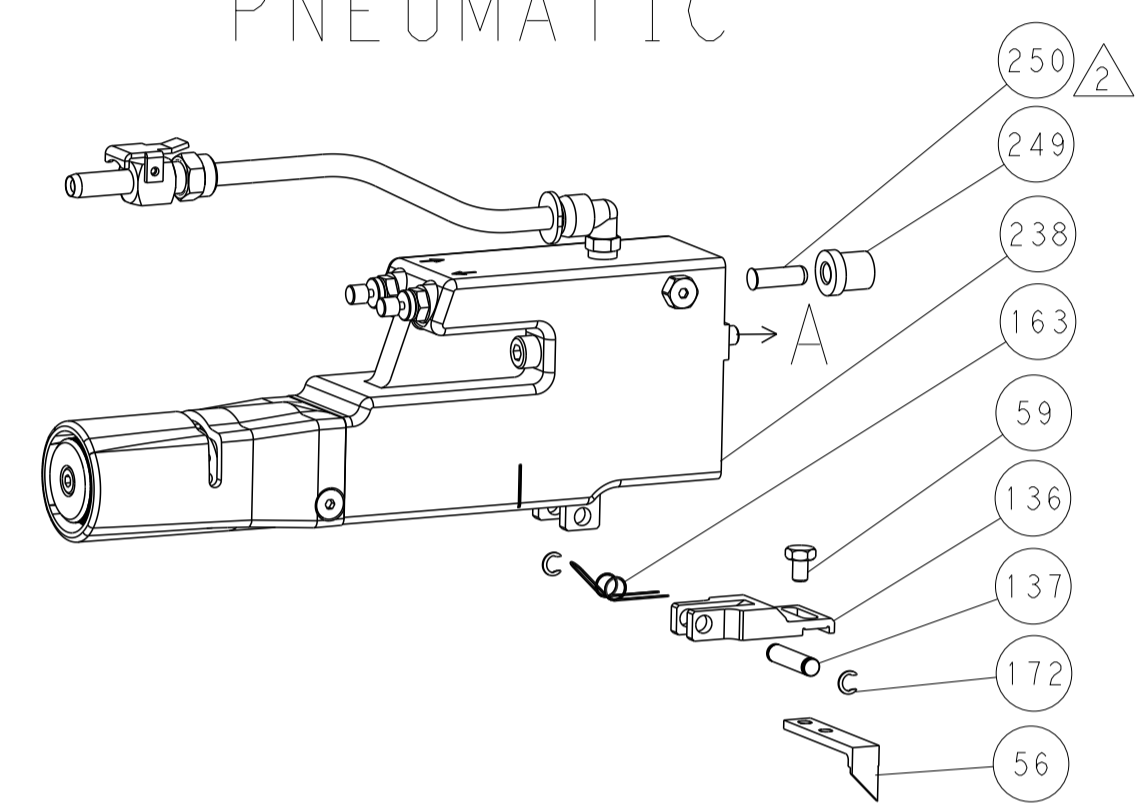
DIMENSIONS:		TOLERANCES UNLESS OTHERWISE SPECIFIED:		OWN		CHK		APVD		NAME	
mm	0 PLC ±	1 PLC ±	2 PLC ±	3 PLC ±	4 PLC ±	5 PLC ±	6 PLC ±	7 PLC ±	8 PLC ±	9 PLC ±	10 PLC ±
MATERIAL:				FINISH:		WEIGHT:		SCALE:		RESTRICTED TO:	
Customer Accessible Production Drawing				SCALE: 1:2		SHEET 3 OF 4		REV A		ITEM NO:	

LOC		DIST		REVISIONS			
A	66	P	LTM	DESCRIPTION	DATE	DWN	APVD
		-		SEE SHEET 1			

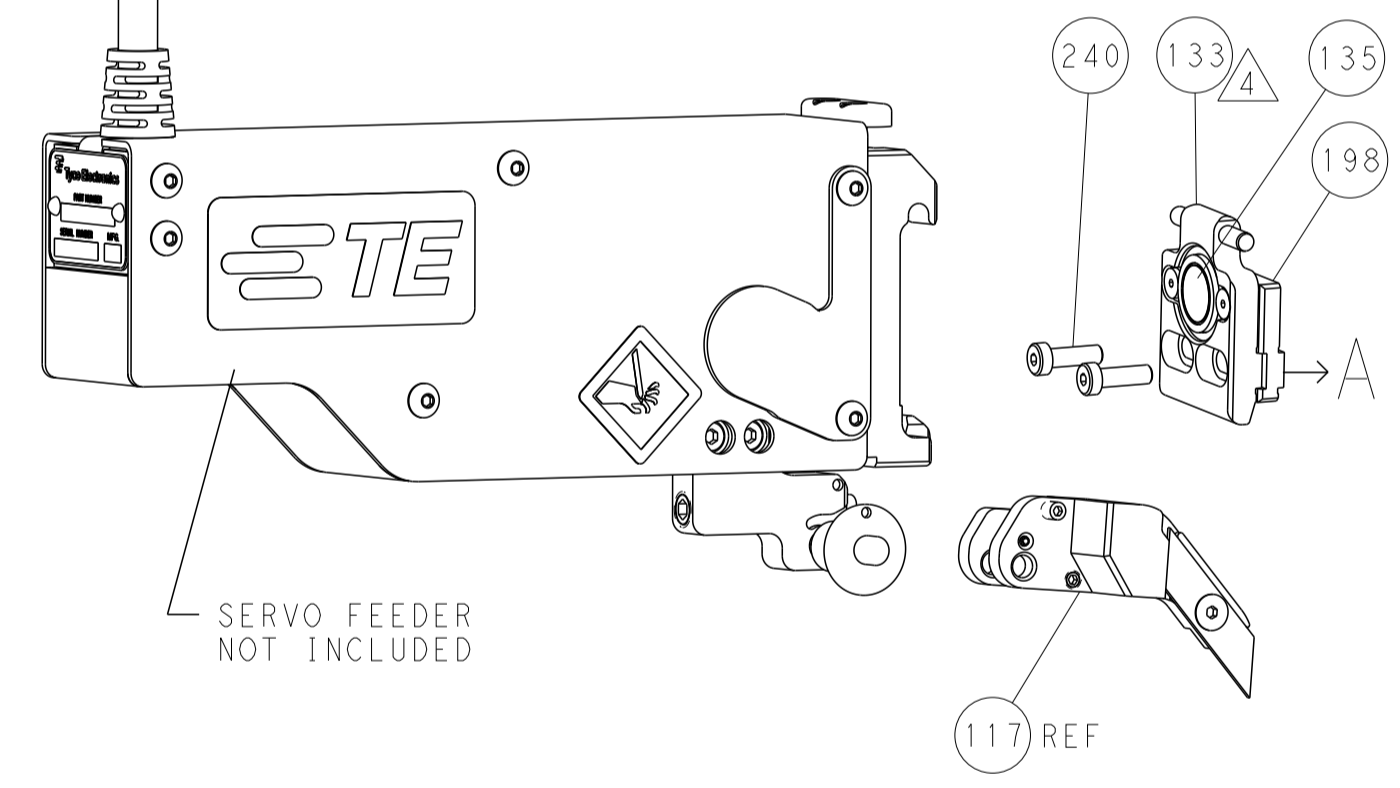
FEED TYPE MECHANICAL



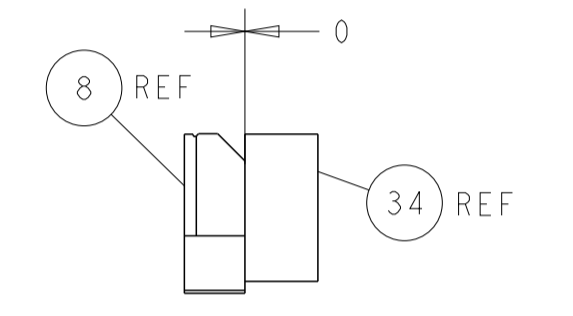
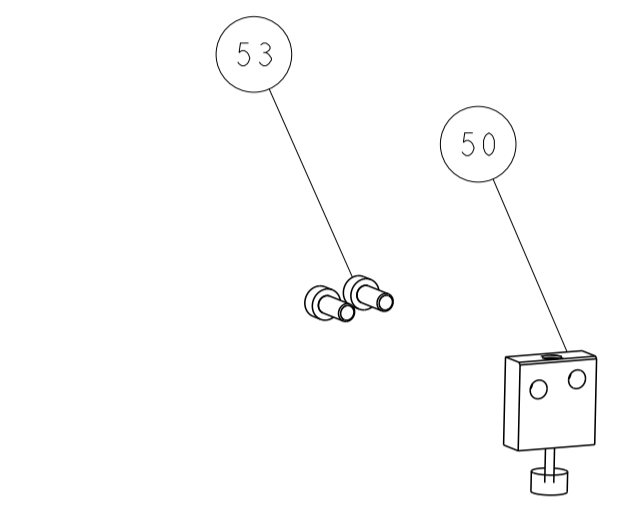
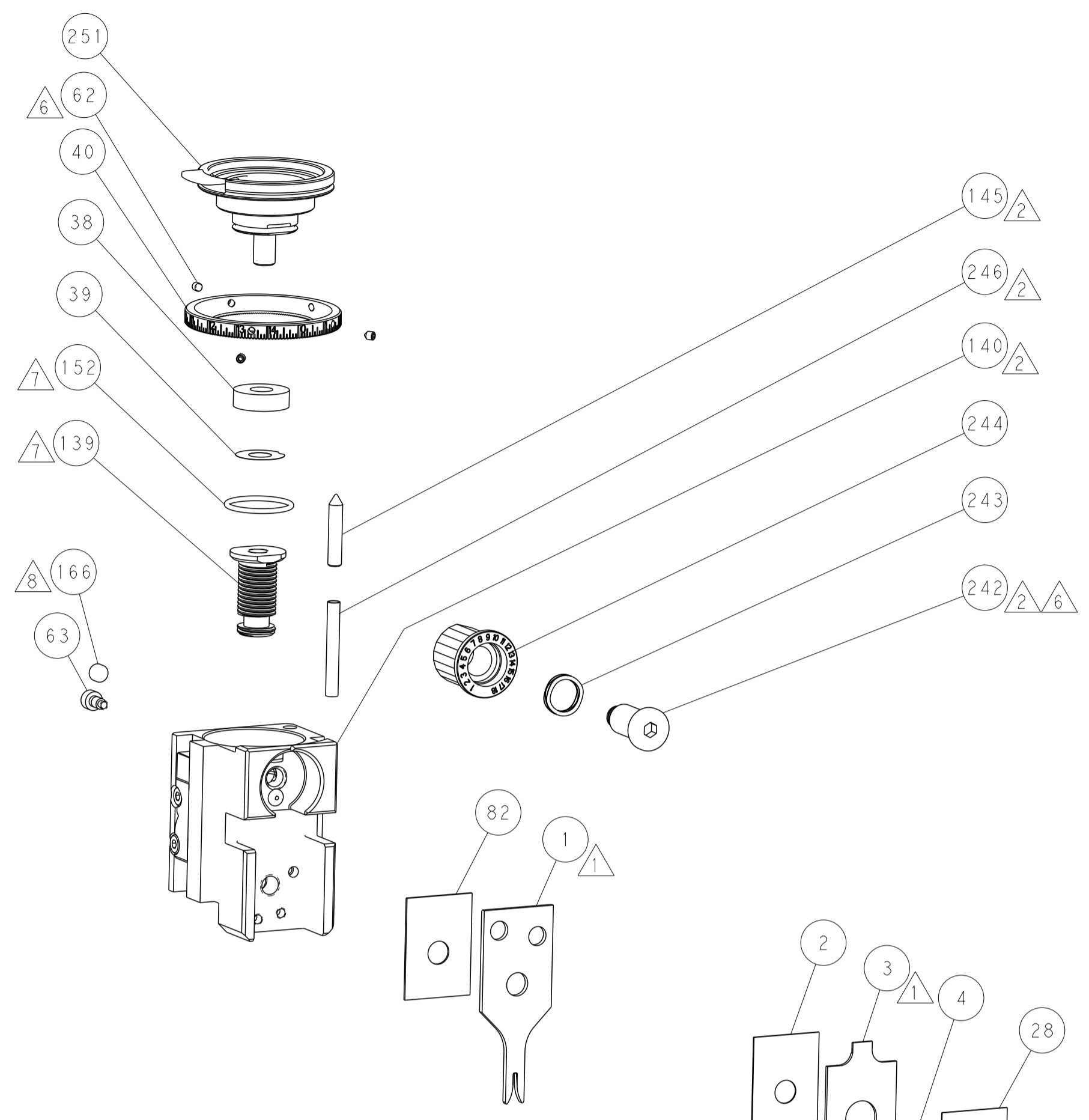
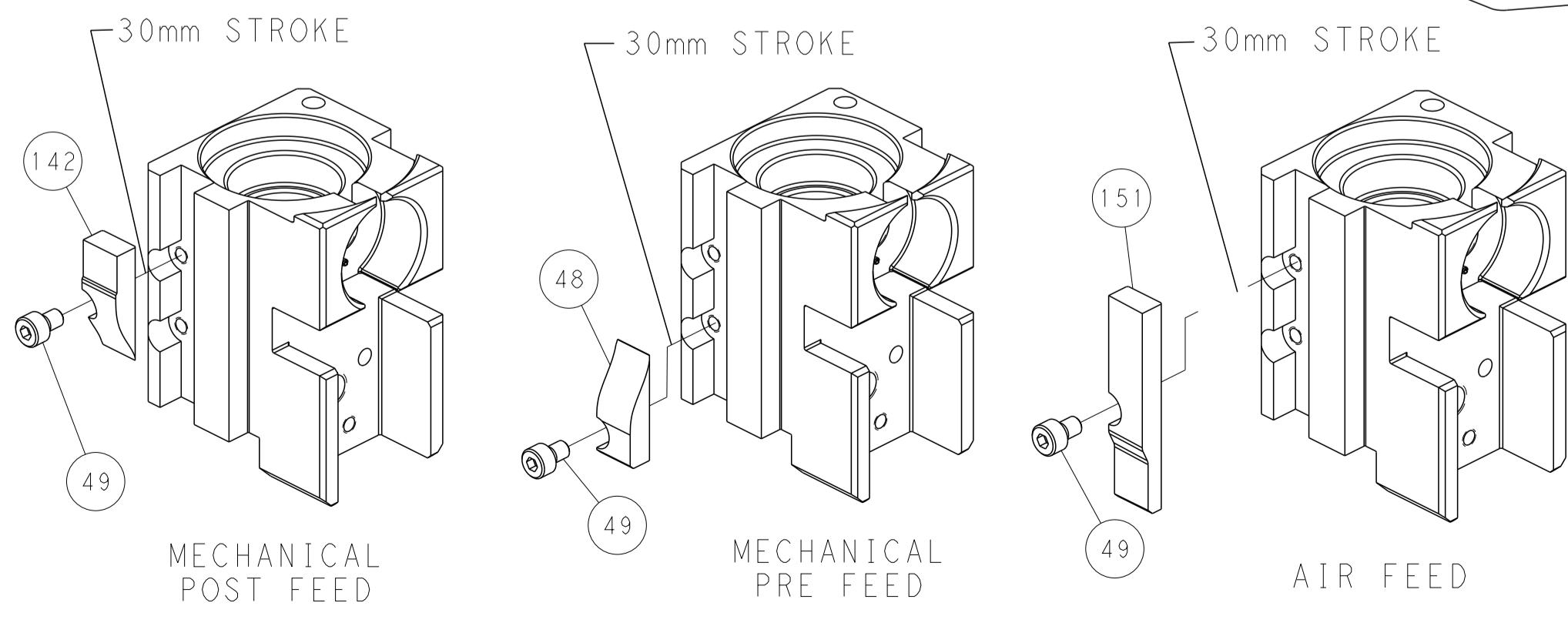
PNEUMATIC



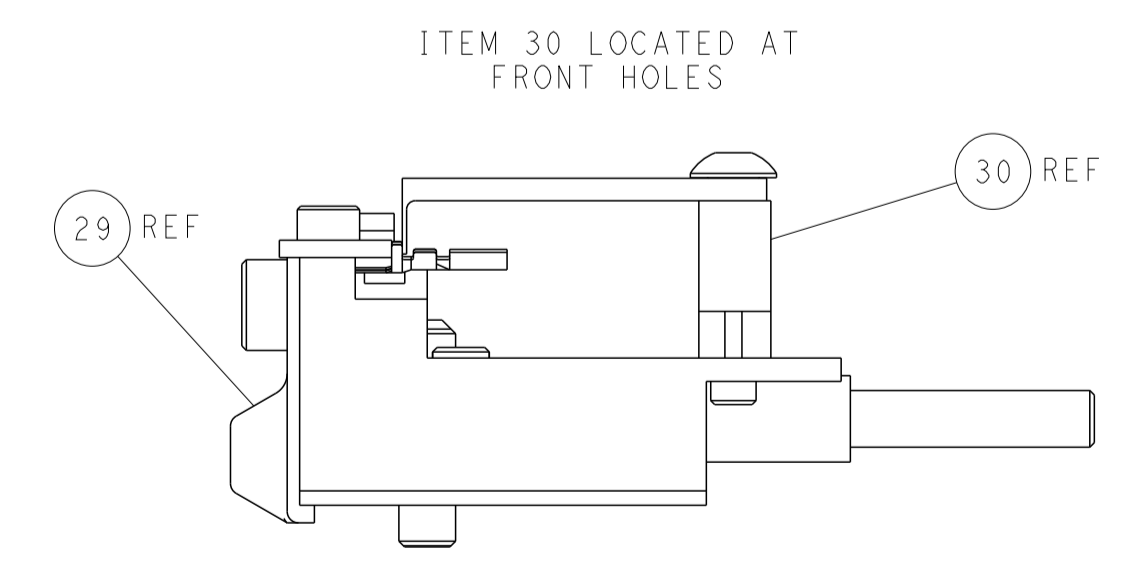
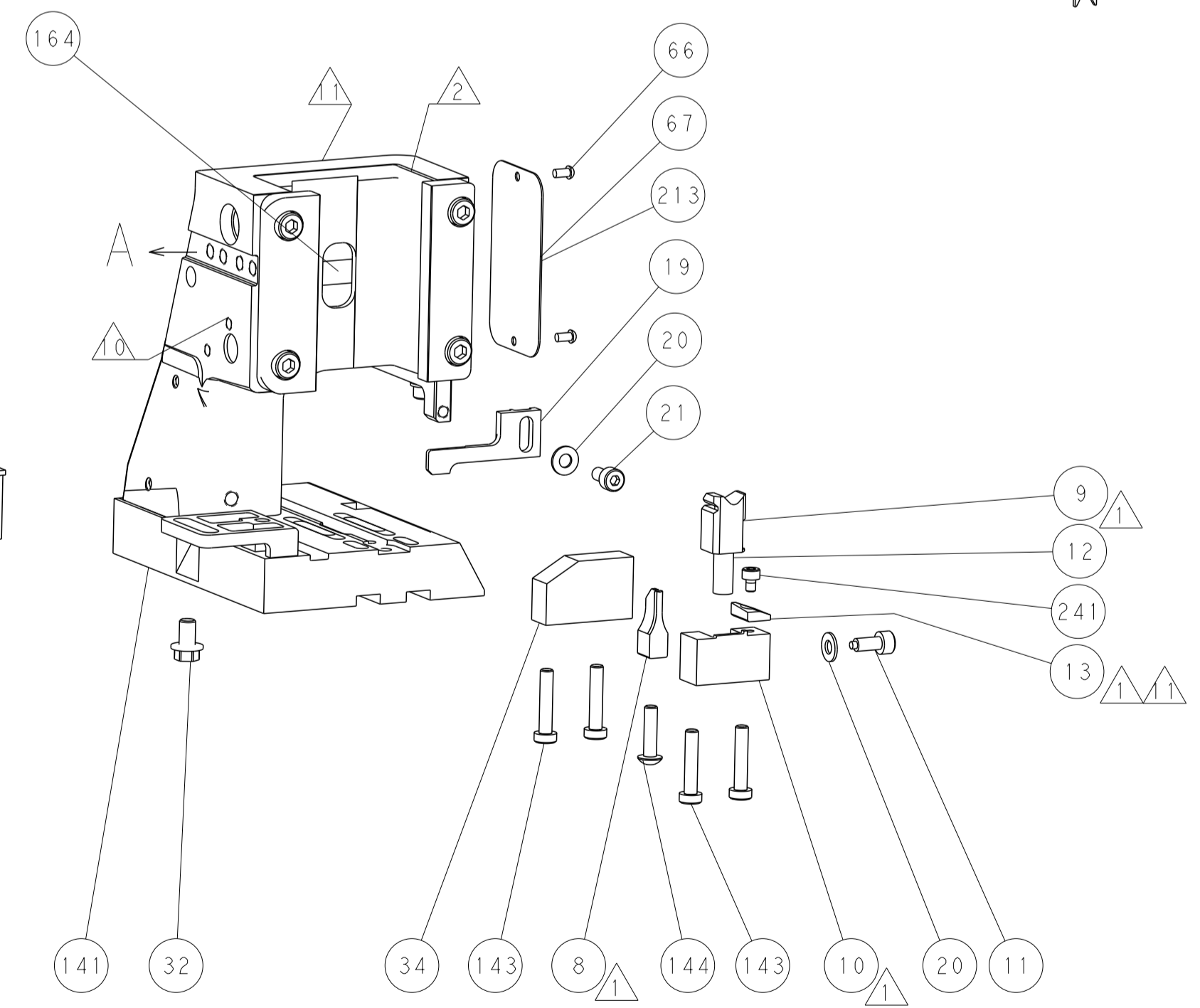
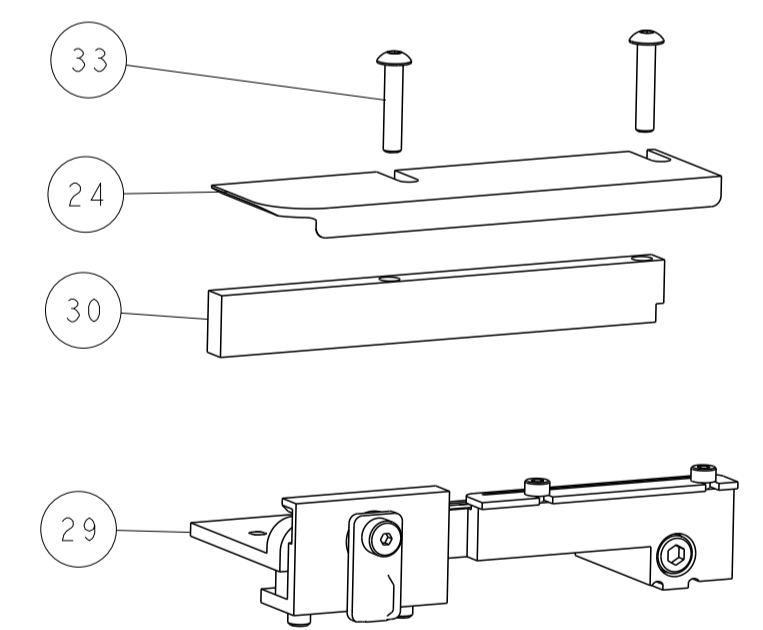
SERVO LATCH PLATE



CAM POSITIONS



TERMINAL SUPPORT LOCATION



FEED TRACK POSITION GUIDE BY INSULATION BARREL

PACIFIC VERSION
 Shown on sheets 3 of 4 & 4 of 4
 (Atlantic version shown on sheets 1 of 4 & 2 of 4)

DIMENSIONS:		TOLERANCES UNLESS OTHERWISE SPECIFIED:		DWN F. ZHANG 05JUL2018		STE TE Connectivity	
mm	0 PLC ±	1 PLC ±	2 PLC ±	3 PLC ±	4 PLC ±	5 PLC ±	Harrisburg, PA 17105-3608
MATERIAL:		FINISH:		CHK K. ZHANG 05JUL2018		NAME Ocean Side Feed Applicator	
				APVD K. ZHANG 05JUL2018		SIZE CAGE CODE DRAWING NO	
				PRODUCT SPEC		RESTRICTED TO	
				APPLICATION SPEC		A 00779 C=2837330	
				WEIGHT		SCALE 1:2 SHEET 4 OF 4 REV A	
				Customer Accessible Production Drawing		SHEETS 1 & 2 ARE NOT REQUIRED FOR PACIFIC VERSION	