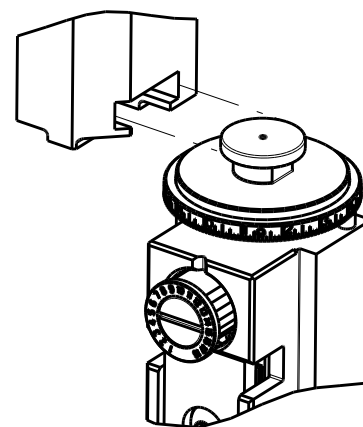
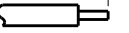



8		7	
THIS DRAWING IS UNPUBLISHED.		RELEASED FOR PUBLICATION	
© COPYRIGHT 20		20	
BY TYCO ELECTRONICS CORPORATION. ALL RIGHTS RESERVED.			
ATLANTIC VERSION TERMINATOR INTERFACE ADAPTER	PART NUMBER	REVISION	DESCRIPTION
	2837313-1	A	FINE CRIMP HEIGHT ADJUST
	2837313-2	A	FINE CRIMP HEIGHT ADJUST
	2837313-5	A	FINE CRIMP HEIGHT ADJUST
	2837313-6	A	NON-CRIMP HEIGHT ADJUST
	2837313-7	A	FINE CRIMP HEIGHT ADJUST
	7-2837313-7	A	CRIMP TOOLING KIT

APPLICATOR DATA		
CRIMP	SIZE	TYPE
WIRE	2.29 mm [.090]	F
INSUL	3.50 mm [.138]	F
APPLICATOR INSTRUCTIONS 408-10389		

TERMINAL DATA: TE TERMINAL		TE CRIMP SPECIFICATION	
TERMINAL NAME: MINI FUSE TERMINAL			
WIRE STRIP LENGTH			TERMINAL INSULATION DIAMETER RANGE
7.00-8.00 mm [.276-.315 IN]			Ø1.50-2.20 mm [.059-.087 IN]
TERMINAL APPLICATION SPECIFICATION		114-10100	-
		-	-
TERMINALS APPLIED			
TE TERMINAL	TE TERMINAL	TE TERMINAL	TE TERMINAL
1813018-7			

WIRE SIZE	CRIMP HEIGHT mm [INCH]	CRIMP HEIGHT REFERENCE SETTING
0.50mm2	1.25+/-0.05 [.049+/- .002]	7.2
0.30mm2	1.19+/-0.05 [.047+/- .002]	8.0



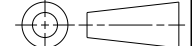
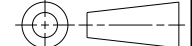
- 1 RECOMMENDED SPARE PARTS
- 2 GREASE BEARING SURFACES LIGHTLY
3. LUBRICATE DAILY PER THE APPLICATOR INSTRUCTION SHEET SUPPLIED WITH THE APPLICATOR.
- 4 APPLICATOR SPECIFIC DATA TO BE ENTERED INTO BLANK MEMORY CHIP AT ASSEMBLY. SEE BELOW FOR PART NUMBER:
MECHANICAL FEED WITH "SMART APPLICATOR" CONVERSION: 8-2837313-4
PNEUMATIC FEED WITH "SMART APPLICATOR" CONVERSION: 8-2837313-4
SERVO FEED WITH "FINE CRIMP HEIGHT ADJUST": 8-2837313-5
SERVO FEED WITH "NON-CRIMP HEIGHT ADJUST": 8-2837313-6
5. ADJUSTMENT OF THE STRIPPER MAY BE REQUIRED WHEN MOVING THE APPLICATOR BETWEEN BENCH AND LEADMAKER APPLICATIONS.
- 6 APPLY PART NUMBER 1-23419-5 LOCTITE TO THREADS OF ITEM 62. APPLY PART NUMBER 2-23419-6 LOCTITE TO THREADS OF ITEM 242. FOR -6 ONLY APPLY PART NUMBER 1-23419-5 LOCTITE TO THREADS OF ITEM 37.
- 7 GREASE THREADS, GROOVE AND O-RING ON ITEMS 35 & 252.
- 8 MAGNET, ITEM 166 MUST BE ORIENTED CORRECTLY IN ORDER TO PROPERLY ACTUATE THE COUNTER.
- 9 CRIMP HEIGHT REFERENCE SETTING WAS THE SETTING USED WHEN THE APPLICATOR WAS QUALIFIED AT THE FACTORY. ADJUSTMENT MAY BE NECESSARY WHEN RUNNING APPLICATOR IN THE FIELD.
- 10 SPARE FEED CAM STORAGE LOCATION REFER TO INSTRUCTION SHEET FOR ADDITIONAL INFORMATION.
- 11 TO CONVERT THE APPLICATOR TO A NON-CARRIER CUTTING STYLE, REMOVE ITEM 13 AND ATTACH TO THE LOCATION ON THE BACK SIDE OF THE HOUSING. REFER TO INSTRUCTION SHEET FOR ADDITIONAL INFORMATION.
- 12 WHEN ASSEMBLING A NON CRIMP HEIGHT ADJUST APPLICATOR (-6) USE SHIMS FROM ITEM 260 TO ACHIEVE A NOMINAL SHIM HEIGHT OF 4.55.
13. UNLESS SPECIFIED OTHERWISE TORQUE VALUES SHALL BE USED PER DOCUMENT 101-35000.

*WARNING
ON INSTALLATION, SET WIRE DISC, ITEM 40 TO LARGEST WIRE SIZE SETTING. USE OF SETTINGS BELOW MINIMUM REQUIRED CRIMP HEIGHT SETTING WILL CAUSE DAMAGE TO CRIMP TOOLING.

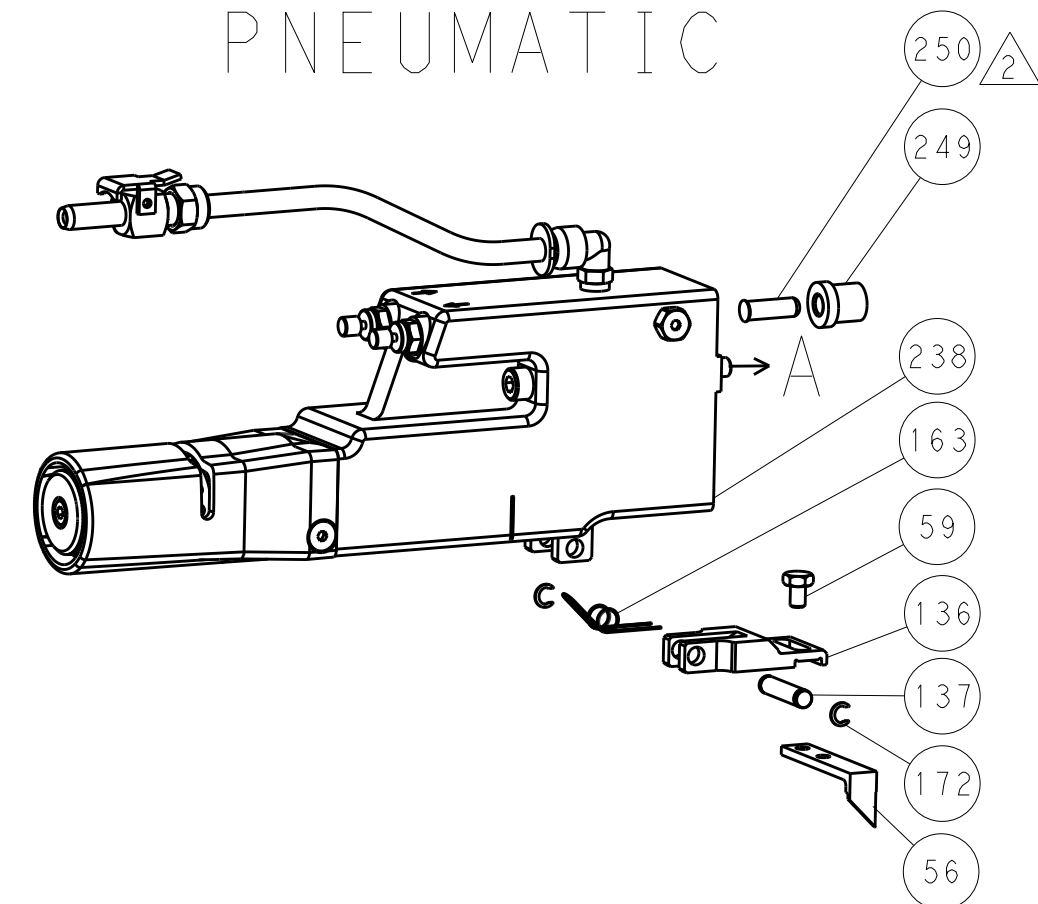
ATLANTIC VERSION
Shown on sheets 1 of 4 & 2 of 4
(Pacific version shown on sheets 3 of 4 & 4 of 4)

SET UP GAUGE 2119599-1		LOC A	DIST 66	REVISIONS			
P	LTR	DESCRIPTION		DATE	DWN	APVD	
	I	DEVELOPMENT		20JUN2018	FL	KZ	
	A	RELEASE		16JUL2018	AW	GB	

-	-	1	-	-	-	2119957-2	APPLICATOR SHIM PACK	260
7	-	1	-	1	1	8-21084-0	O-RING, .676 ID, .070 DIA. MAT.	252
	-	-	-	1	-	2119640-1	PUSH ROD, AIR FEED	250
	-	-	-	1	-	1803259-1	BUSHING, FLANGED	249
	-	-	-	1	-	2119641-1	FEED CAM, AIR FEED	248
	-	1	-	1	1	2119798-1	DETENT PIN	247
	-	1	-	1	1	1-22279-3	SPRING, COMPRESSION	246
	-	1	-	-	-	2119758-1	RAM, AMP STYLE, SIDE FEED, NON-ADJ.	245
	-	1	1	1	1	2119082-4	CAM, SNAIL, INSULATION ADJUSTMENT	244
6	-	1	1	1	1	2079764-1	WASHER, WAVE SPRING, CREST-TO-CREST	243
	-	1	1	1	1	2119083-1	RETAINER, INSULATION DIAL	242
	-	1	1	1	1	7-18023-7	SCR, SKT HD CAP M3 X 4.0	241
	-	2	2	-	-	2168400-6	SHCS, LOW HEAD, RoHS, M5 X 16	240
	-	-	-	-	1	2119580-1	MECHANICAL FEED ASSEMBLY	239
	-	-	-	-	1	2063440-1	AIR FEED MODULE	238
	-	-	1	1	-	2119740-2	TAG,IDENTIFICATION	213
	-	-	1	1	-	1901094-3	SPACER, FEEDER	198
	-	-	-	-	2	21045-3	RING, RETAIN, EXTERN, 3/16 CRESCENT	172
	-	1	1	1	1	994969-1	MAGNET, RARE EARTH HIGH ENERGY	166
	-	REF	REF	REF	REF	994970-2	COUNTER, MAGNETIC	164
	-	-	-	-	1	240638-1	SPRING, FEED FINGER	163
	-	-	-	-	1	3-23627-7	PIN, RETAIN, GRVD, 3/16 X .854	137
	-	-	-	-	1	2119799-1	HOLDER,FEED FINGER, AF	136
	-	-	REF	REF	-	SEE NOTE 4	MEMORY CHIP, PROGRAMMED	135
	-	-	1	1	-	1633743-1	SERVO FEED LATCH ASM	133
	-	-	REF	REF	-	2119944-1	FEED FINGER ASSEMBLY,SF	117
	-	1	1	1	1	455888-4	SPACER, CRIMPER	82
	-	1	1	1	1	2119956-1	DOCUMENTATION PACKAGE	71
	-	1	-	-	1	2119740-1	TAG,IDENTIFICATION	67
	-	2	2	2	2	2168078-1	SCREW, DRIVE, RH, RoHS, 2 x .188	66
6	-	1	-	1	1	2119793-1	LIMITER, ADJUSTMENT BOLT	63
	-	3	-	3	3	992763-5	SCR, SET, SOC, CONE PNT, M3 x 4.0	62
	-	1	1	1	1	2079383-4	SCR, BHSC, RoHS (M4 X 8)	60
	-	-	-	-	1	5-18022-5	SCR, HEX HD CAP, M4 X 6.0	59
	-	-	-	-	1	1338685-1	PAWL, FEED	56
	-	4	4	4	4	2168400-1	SHCS, LOW HEAD, RoHS, M4 X 12	54
	-	2	2	2	2	2168083-3	SCR, SKT HD CAP, RoHS, M4 X 12.0	53
	-	1	1	1	1	1803382-2	HOLD DOWN, SPRING LOADED	50
	-	-	-	-	1	18023-9	SCR, SKT HD CAP M4 X 6.0	49
	-	-	-	-	1	2119652-1	FEED CAM, PRE FEED	48
	-	-	-	-	1	2119653-1	FEED CAM, POST FEED	47
	-	1	1	1	1	2119656-9	APPLICATOR BASIC ASSEMBLY, SF	46
	-	1	-	1	1	2119370-1	RAM, AMP STYLE, SIDE FEED	44
	-	1	1	1	1	2079383-7	SCR, BHSC, RoHS (M8 X 25)	41
	-	1	-	1	1	2119645-1	DISC, NUMBERED FA WIRE ADJUSTMENT	40
	-	1	-	1	1	2119957-1	APPLICATOR SHIM PACK	39
	-	1	1	1	1	2119644-1	RAM WASHER, PRECISION	38
6	-	1	1	1	1	2119085-1	FA HEAD, ATLANTIC STYLE	37
7	-	1	-	1	1	2119092-1	BOLT, ADJUSTMENT	35
	-	1	1	1	1	1752356-3	SUPPORT, TERMINAL	34
	-	2	2	2	2	2079383-5	SCR, BHSC, RoHS (M4 X 20)	33
	-	1	1	1	1	2161328-1	HEX HEAD, FLANGED, M5 x 8mm LONG	32
	-	1	1	1	1	1320908-3	SPACER, STRIP GUIDE	30
	-	1	1	1	1	2119959-1	ASSEMBLY, STRIP GUIDE	29
	-	1	1	1	1	455888-3	SPACER, CRIMPER	28
	-	1	1	1	1	1320928-2	STRIP GUIDE	24
	-	1	1	1	1	2168083-2	SCR, SKT HD CAP, RoHS, M4 X 8.0	21
	-	2	2	2	2	1-18028-2	WASHER, FLAT, REG M4	20
	-	1	1	1	1	2119533-1	STRIPPER, SIDE FEED	19
1	-	1	1	1	1	2119806-1	INSERT, SHEAR	13
	-	1	1	1	1	3-22280-3	SPRING, COMPRESSION	12
	-	1	1	1	1	1-356885-4	STOP, SHEAR	11
1	-	1	1	1	1	2119805-1	SHEAR HOLDER, FRONT	10
1	-	1	1	1	1	454276-5	FLOATING SHEAR, FRONT	9
1	1	1	1	1	1	4-1633921-6	ANVIL, COMBINATION	8
	-	1	1	1	1	1-240641-1	SPACER	7
	-	-	-	-	-	-	-	6
	-	1	1	1	1	2119757-4	DEPRESSOR, SHEAR	5
	-	1	1	1	1	3-238011-5	BLOCK, CRIMPER SPACER	4
1	1	1	1	1	1	5-1803223-1	CRIMPER, INSULATION F PREMIUM	3
	-	1	1	1	1	455888-6	SPACER, CRIMPER	2
1	1	1	1	1	1	4-456406-2	CRIMPER, WIRE PREMIUM	1

-77 -7 -6 -5 -2 -1						PART NO		DESCRIPTION				ITEM NO							
THIS DRAWING IS A CONTROLLED DOCUMENT FOR MICRO-ELECTRONICS CORPORATION ANY CHANGES TO DIMENSIONS OR MATERIALS MUST BE APPROVED BY MICRO-ELECTRONICS CORPORATION SHOULD BE CONTACTED FOR THE LATEST REVISION.												DWN F. LIANG 20JUN2018							
DIMENSIONS: mm												CHK K. ZHANG 20JUN2018							
												APVD K. ZHANG 20JUN2018							
												NAME							
												PRODUCT SPEC							
												APPLICATION SPEC							
												SIZE	CAGE CODE	DRAWING NO	RESTRICTED TO				
MATERIAL : FINISH :												A	00779	C=2837313	-				
Customer Accessible Production Drawing												SCALE	1:2	SHEET	1	OF	4	REV	A

PNEUMATIC



LATCH PLATE

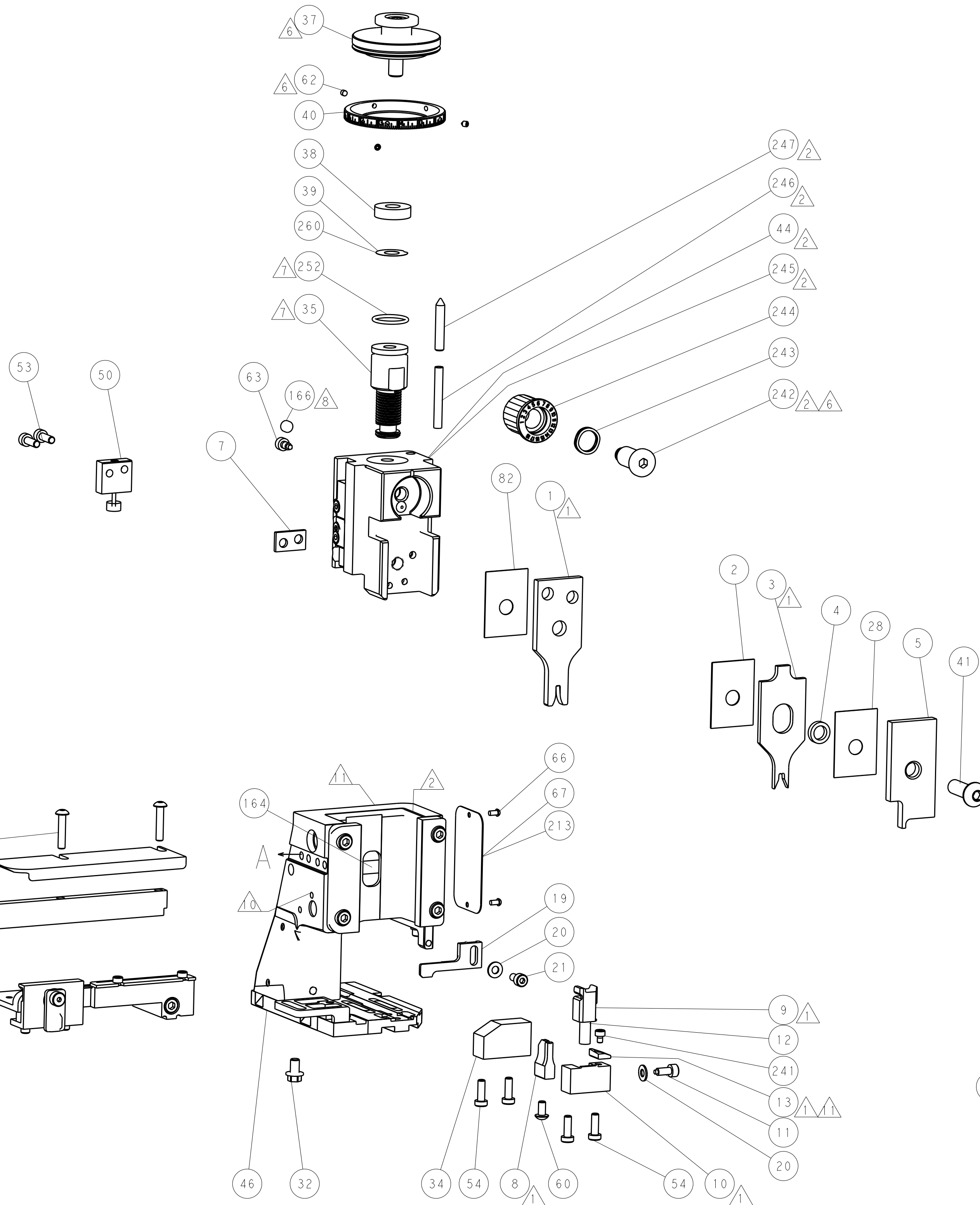
SERVO FEEDER
NOT INCLUDED

240 133 135 198 4 A

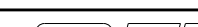

117 REF

The diagrams illustrate the installation of the mechanical post feed unit for three different machine configurations:

- MECHANICAL POST FEED:** Shows the unit with a 30mm STROKE and 40mm STROKE. Part 47 is the main body, and part 49 is the mounting bracket.
- MECHANICAL PRE FEED:** Shows the unit with a 30mm STROKE and 40mm STROKE. Part 48 is the main body, and part 49 is the mounting bracket.
- AIR FEED:** Shows the unit with a 30mm STROKE and 40mm STROKE. Part 248 is the main body, and part 49 is the mounting bracket.



Shown on sheets 1 of 4 & 2 of 4
(Pacific version shown on sheets 3 of 4 & 4 of 4)

THIS DRAWING IS A CONTROLLED DOCUMENT FOR THE IT IS SUBJECT TO CHANGE AND THE CONTROL PLAN ENGINEERING ORGANIZATION SHOULD BE CONSULTED FOR THE LATEST REVISION		DWN F. LIANG 20JUN2018		 TE Connectivity Harrisburg, PA 17105-3608	
		CHK K. ZHANG 20JUN2018			
		APVD K. ZHANG 20JUN2018			
DIMENSIONS:		TOLERANCES UNLESS OTHERWISE SPECIFIED:		NAME Ocean Side Feed Applicator -	
mm					
		0. PLC ±.			
		1. PLC ±.			
		2. PLC ±.			
		3. PLC ±.			
4. PLC ±.		PRODUCT SPEC			
ANGLES		APPLICATION SPEC			
MATERIAL		FINISH		SIZE	
-		-		CAGE CODE	
				DRAWING NO	
				RESTRICTED TO	
				A1 00779 C-2837313	
				-	
				Customer Accessible Production Drawing	
				SCALE 1:2	
				SHEET 2 OF 4	
				REV A	

8

7

6

5

4

3

2

1

THIS DRAWING IS UNPUBLISHED.

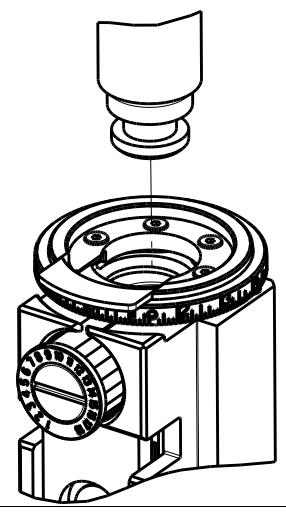
RELEASED FOR PUBLICATION

20

© COPYRIGHT 20

BY TYCO ELECTRONICS CORPORATION. ALL RIGHTS RESERVED.

PACIFIC VERSION
TERMINATOR
INTERFACE ADAPTER



PART
NUMBER

2-2837313-1

REVISION

A

DESCRIPTION

FINE CRIMP HEIGHT ADJUST

FEED TYPE

MECHANICAL

CONVERT TO

PNEUMATIC FEED

PART NUMBERS REQUIRED

2119950-1

1338685-1

5-18022-5

2119641-2

2119799-1

2063440-1

SERVO LATCH PLATE

2119951-1

-

8-2837313-5

1901094-3

-

2168400-6 (QUANTITY 2)

SMART APPLICATOR

2161326-1

-

8-2837313-4

-

-

MECHANICAL FEED

2119949-1

1338685-1

5-18022-5

2119653-2

-

-

SERVO LATCH PLATE

2119951-1

-

8-2837313-5

1901094-3

-

2168400-6 (QUANTITY 2)

SMART APPLICATOR

2161326-1

-

8-2837313-4

-

-

MECHANICAL FEED

2119949-1

1338685-1

5-18022-5

2119653-2

-

-

PNEUMATIC FEED

2119950-1

1338685-1

5-18022-5

2119641-2

2119799-1

2063440-1

-

-

-

-

-

-

-

-

-

-

-

-

2-2837313-5

A

FINE CRIMP HEIGHT ADJUST

SERVO
LATCH PLATE⁴

2-2837313-7

A

FINE CRIMP HEIGHT ADJUST

NONE

7-2837313-7

A

CRIMP TOOLING KIT

-

APPLICATOR DATA

CRIMP

SIZE

TYPE

WIRE

2.29 mm [.090]

F


INSUL

3.50 mm [.138]

F

APPLICATOR INSTRUCTIONS

408-10389



TERMINAL DATA: TE TERMINAL

TE CRIMP SPECIFICATION

TERMINAL NAME: MINI FUSE TERMINAL

WIRE STRIP LENGTH

7.00-8.00 mm [.276-.315 IN]

TERMINAL INSULATION DIAMETER RANGE

Ø1.50-2.20 mm [.059-.087 IN]

TERMINAL APPLICATION SPECIFICATION

114-10100

-

-

-

-

-

-

TERMINALS APPLIED

TE TERMINAL

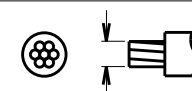
TE TERMINAL

TE TERMINAL

TE TERMINAL


1813018-7

WIRE SIZE




CRIMP HEIGHT

mm [INCH]



CRIMP HEIGHT

REFERENCE SETTING



0.50mm2


1.25+/-0.05 [.049+/-0.002]

7.2

0.30mm2

1.19+/-0.05 [.047+/-0.002]

8.0



RECOMMENDED SPARE PARTS

GREASE BEARING SURFACES LIGHTLY

3. LUBRICATE DAILY PER THE APPLICATOR INSTRUCTION SHEET SUPPLIED WITH THE APPLICATOR.

4

APPLICATOR SPECIFIC DATA TO BE ENTERED INTO BLANK MEMORY CHIP AT ASSEMBLY. SEE BELOW FOR PART NUMBER:
MECHANICAL FEED WITH "SMART APPLICATOR" CONVERSION: 8-2837313-4
PNEUMATIC FEED WITH "SMART APPLICATOR" CONVERSION: 8-2837313-4
SERVO FEED WITH "FINE CRIMP HEIGHT ADJUST": 8-2837313-5

5. ADJUSTMENT OF THE STRIPPER MAY BE REQUIRED WHEN MOVING THE APPLICATOR BETWEEN BENCH AND LEADMAKER APPLICATIONS.

6

APPLY PART NUMBER 1-23419-5 LOCTITE TO THREADS OF ITEM 62.
APPLY PART NUMBER 2-23419-6 LOCTITE TO THREADS OF ITEM 242.

7

GREASE THREADS, GROOVE AND O-RING ON ITEMS 139 & 152.

8

MAGNET MUST BE ORIENTED CORRECTLY IN ORDER TO PROPERLY ACTUATE THE COUNTER.

9

CRIMP HEIGHT REFERENCE SETTING WAS THE SETTING USED WHEN THE APPLICATOR WAS QUALIFIED AT THE FACTORY. ADJUSTMENT MAY BE NECESSARY WHEN RUNNING APPLICATOR IN THE FIELD.

10

SPARE FEED CAM STORAGE LOCATION REFER TO INSTRUCTION SHEET FOR ADDITIONAL INFORMATION.

11

TO CONVERT THE APPLICATOR TO A NON-CARRIER CUTTING STYLE, REMOVE ITEM 13 AND ATTACH TO THE LOCATION ON BACK SIDE OF THE HOUSING. REFER TO INSTRUCTION SHEET FOR ADDITIONAL INFORMATION.

12. UNLESS SPECIFIED OTHERWISE TORQUE VALUES SHALL BE USED PER DOCUMENT 101-35000.

APPLICATOR STYLE CONVERSION CHART

CONVERT TO

PART NUMBERS REQUIRED

PNEUMATIC FEED

2119950-1

1338685-1

5-18022-5

2119641-2

2119799-1

2063440-1

SERVO LATCH PLATE

2119951-1

-

8-2837313-5

1901094-3

-

2168400-6 (QUANTITY 2)

SMART APPLICATOR

2161326-1

-

8-2837313-4

-

-

MECHANICAL FEED

2119949-1

1338685-1

5-18022-5

2119653-2

-

-

SERVO LATCH PLATE

2119951-1

-

8-2837313-5

1901094-3

-

2168400-6 (QUANTITY 2)

SMART APPLICATOR

2161326-1

-

8-2837313-4

-

-

MECHANICAL FEED

2119949-1

1338685-1

5-18022-5

2119653-2

-

-

PNEUMATIC FEED

2119950-1

1338685-1

5-18022-5

2119641-2

2119799-1

2063440-1

-

-

-

-

-

-

-

-

-

-

-

-

SET UP GAUGE

2119599-1

LOC

A

DIST

66

REVISIONS

P

LTR

DESCRIPTION

DATE

OWN

APVD

-

-

SEE SHEET 1

-

-

-

-

1

1

1

1

2119782-1

FINE ADJUST HEAD ASM, PACIFIC STYLE

251

-

-

-

1

-

2119640-1

PUSH ROD, AIR FEED

250

-

-

-

1

-

1803259-1

BUSHING, FLANGED

249

-

1

1

1

1

1-22279-3

SPRING, COMPRESSION

246

-

1

1

1

1

2119082-4

CAM, SNAIL, INSULATION ADJUSTMENT

244

-

1

1

1

1

2079764-1

WASHER, WAVE SPRING, CREST-TO-CREST

243

-

1

1

1

1

2119083-1

RETAINER, INSULATION DIAL

242

-

1

1

1

1

7-18023-7

SCR, SKT HD CAP M3 X 4.0

241

-

-

2

-

-

2168400-6

SHCS, LOW HEAD, RoHS, M5 X 16

240

-

-

-

-

1

2119580-1

MECHANICAL FEED ASSEMBLY

239

-

-

-

1

-

2063440-1

AIR FEED MODULE

238

-

-

1

-

-

2119740-2

TAG, IDENTIFICATION

213

-

-

1

-

-

1901094-3

SPACER, FEEDER

198

-

-

-

2

-

21045-3

RING, RETAIN, EXTERN, 3/16 CRESCENT

172

-

1

1

1

1

994969-1

MAGNET, RARE EARTH HIGH ENERGY

166

-

REF

REF

REF

REF

994970-2

COUNTER, MAGNETIC

164

-

-

-

1

-

240638-1

SPRING, FEED FINGER

163

-

1

1

1

1

8-21084-1

O-RING, .801 ID, .070 DIA. MAT.

152

-

-

-

1

-

2119641-2

FEED CAM, AIR FEED

151

-

1

1

1

1

2119798-2

DETENT PIN

145

-

1

1

1

1

2079383-8

SCR, BHSC, RoHS (M4 X 16)

144

-

4

4

4

4

2168400-5

SHCS, LOW HEAD, RoHS, M4 X 20

143

-

-

-

-

1

2119653-2

FEED CAM, POST FEED

142

-

1

1

1

1

1-2119656-0

APPLICATOR BASIC ASSEMBLY, SF

141

-

1

1

1

1

2119650-1

RAM, ASIAN STYLE, SIDE FEED

140

-

1

1

1

1

2119092-2

BOLT, ADJUSTMENT

139

-

-

-

1

-

3-23627-7

PIN, RETAIN, GRVD, 3/16 X .854

137

-

-

-

1

-

2119799-1

HOLDER, FEED FINGER, AF

136

-

-

REF

-

-

SEE NOTE 4

MEMORY CHIP, PROGRAMMED

135

-

-

1

-

-

1633743-1

SERVO FEED LATCH ASM

133

-

-

REF

-

-

2119944-1

FEED FINGER ASSEMBLY, SF

117

-

1

1

1

1

455888-4

SPACER, CRIMPER

82

-

1

1

1

1

2119956-1

DOCUMENTATION PACKAGE

71

-

1

-

1

1

2119740-1

TAG, IDENTIFICATION

67

-

2

2

2

2

2168078-1

SCREW, DRIVE, RH, RoHS, 2 x .188

66

-

1

1

1

1

2119793-1

LIMITER, ADJUSTMENT BOLT

63

-

3

3

3

3

992763-5

SCR, SET, SOC, CONE PNT, M3 x 4.0

62

-

-

-

1

1

5-18022-5

SCR, HEX HD CAP, M4 X 6.0

59

-

-

-

1

1

1338685-1

PAWL, FEED

56

-

2

2

2

2

2168083-3

SCR, SKT HD CAP, RoHS, M4 X 12.0

53

-

1

1

1

1

1803382-2

HOLD DOWN, SPRING LOADED

50

-

-

-

1

2

18023-9

SCR, SKT HD CAP M4 X 6.0

49

-

-

-

-

1

2119652-1

FEED CAM, PRE FEED

48

-

1

1

1

1

2079383-7

SCR, BHSC, RoHS (M8 X 25)

41

-

1

1

1

1

2119645-1

DISC, NUMBERED FA WIRE ADJUSTMENT

40

-

1

1

1

1

2119957-1

APPLICATOR SHIM PACK

39

-

1

1

1

1

1-2119644-2

RAM WASHER, PRECISION

38

-

1

1

1

1

1752356-3

SUPPORT, TERMINAL

34

-

2

2

2

2

2079383-5

SCR, BHSC, RoHS (M4 X 20)

33

-

1

1

1

1

2161328-1

HEX HEAD, FLANGED, M5 x 8mm LONG

32

-

1

1

1

1

1320908-3

SPACER, STRIP GUIDE

30

-

1

1

1

1

2119959-1

ASSEMBLY, STRIP GUIDE

29

-

1

1

1

1

455888-3

SPACER, CRIMPER

28

-

1

1

1

1

1320928-2

STRIP GUIDE

24

-

1

1

1

1

2168083-2

SCR, SKT HD CAP, RoHS, M4 X 8.0

21

-

2

2

2

2

1-18028-2

WASHER, FLAT, REG M4

20

-

1

1

1

1

2119533-1

STRIPPER, SIDE FEED

19

-

1

1

1

1

2119806-1

INSERT, SHEAR

13

-

1

1

1

1

3-22280-3

SPRING, COMPRESSION

12

-

1

1

1

1

1-356885-4

STOP, SHEAR

11

-

1

1

1

1

2119805-1

SHEAR HOLDER, FRONT

10

-

1

1

1

1

454276-5

FLOATING SHEAR, FRONT

9

-

1

1

1

1

1

4-1633921-6

ANVIL, COMBINATION

8

-

1

1

1

1

1

1-240641-1

SPACER

7

-

-

-

-

-

-

-

6

-

1

1

1

1

2119757-4

DEPRESSOR, SHEAR

5

-

1

1

1

1

3-238011-5

BLOCK, CRIMPER SPACER

4

-

1

1

1

1

1

5-1803223-1

CRIMPER, INSULATION F PREMIUM

3

-

1

1

1

1

1

455888-6

SPACER, CRIMPER

2

-

1

1

1

1

1

4-456406-2

CRIMPER, WIRE PREMIUM

1

77

27

25

22

21

PART NO

DESCRIPTION

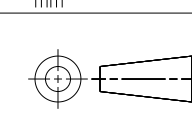
ITEM NO

101-35000-1

THIS DRAWING IS UNPUBLISHED. IT IS SUBJECT TO CHANGE AND TO BE CONTROLLED BY THE ISSUING ORGANIZATION. NO OTHER ORGANIZATION SHOULD BE CONTACTED FOR THE LATEST EDITION.

DIMENSIONS:

mm



TOLERANCES UNLESS OTHERWISE SPECIFIED:

0 PLC ±.001

1 PLC ±.001

2 PLC ±.001

3 PLC ±.001

4 PLC ±.001

ANGLES ±.001

FINISH ±.001

MATERIAL

-

OWN

F. LIANG

20JUN2018

CHK

K. ZHANG

20JUN2018

APVD

K. ZHANG

20JUN2018

PRODUCT SPEC

-

APPLICATION SPEC

-

WEIGHT

-

Customer Accessible Production Drawing

SCALE

1:2

SHEET

3

OF

4

REV

A

NAME

Ocean Side Feed Applicator

SIZE

CAGE CODE

DRAWING NO

00779

©=2837313

RESTRICTED TO

-

PACIFIC VERSION

Shown on sheets 3 of 4 & 4 of 4

(Atlantic version shown on sheets 1 of 4 & 2 of 4)

AMP 4805 REV 31MAR2000

SHEETS 1 & 2 ARE NOT REQUIRED FOR PACIFIC VERSION

LOC	DIST	REVISIONS					
		P	LTR	DESCRIPTION	DATE	DWN	APVD
A	66	-	-	SEE SHEET 1	-	-	-

D

C

B

A

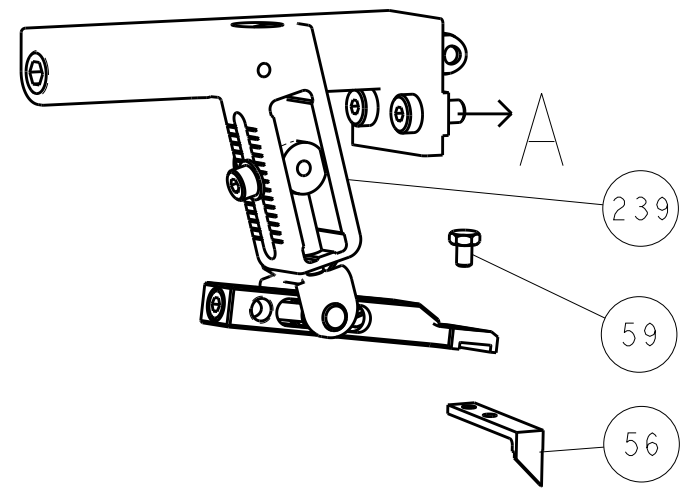
D

C

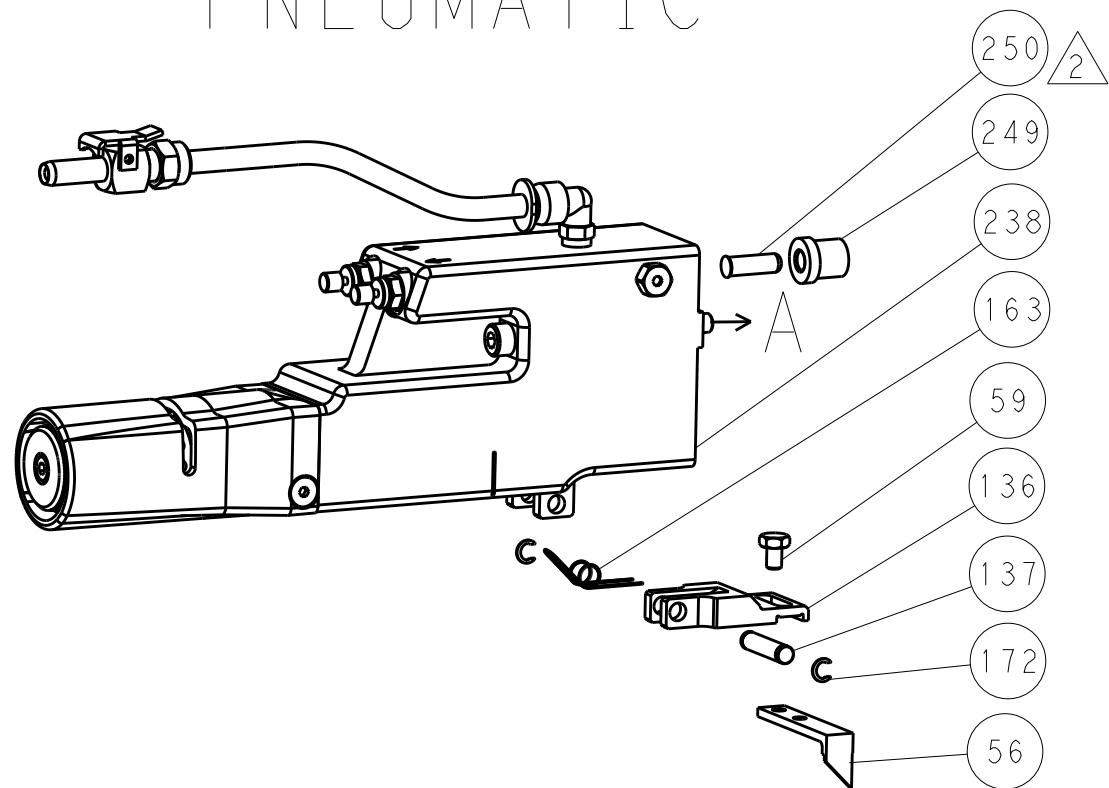
B

A

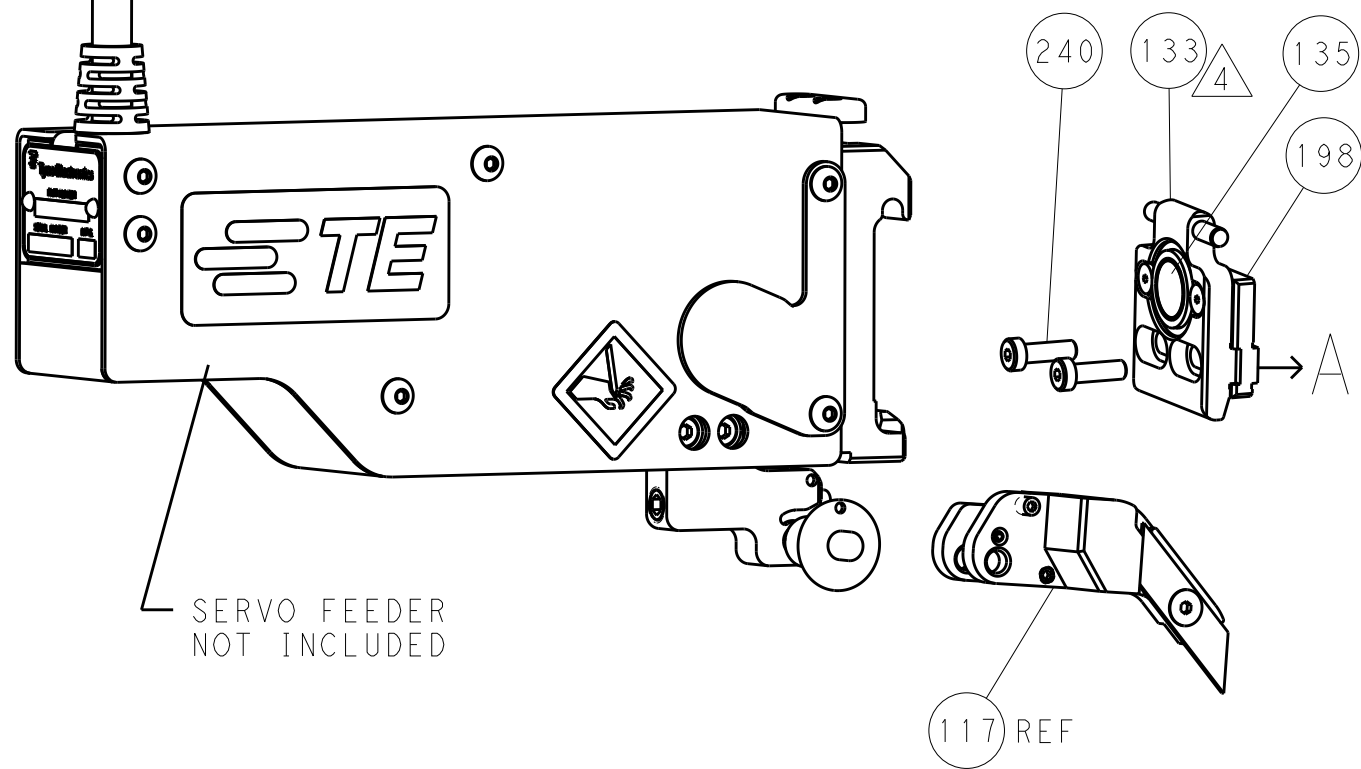
FEED TYPE MECHANICAL



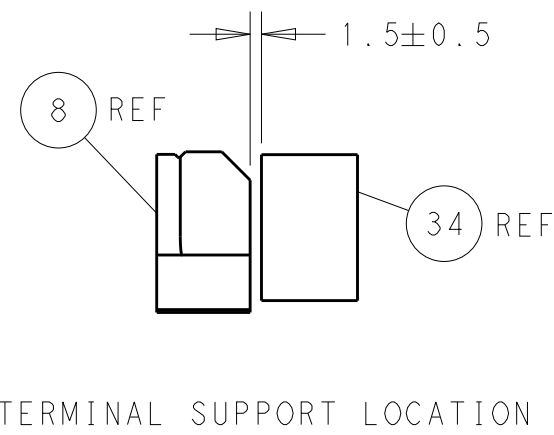
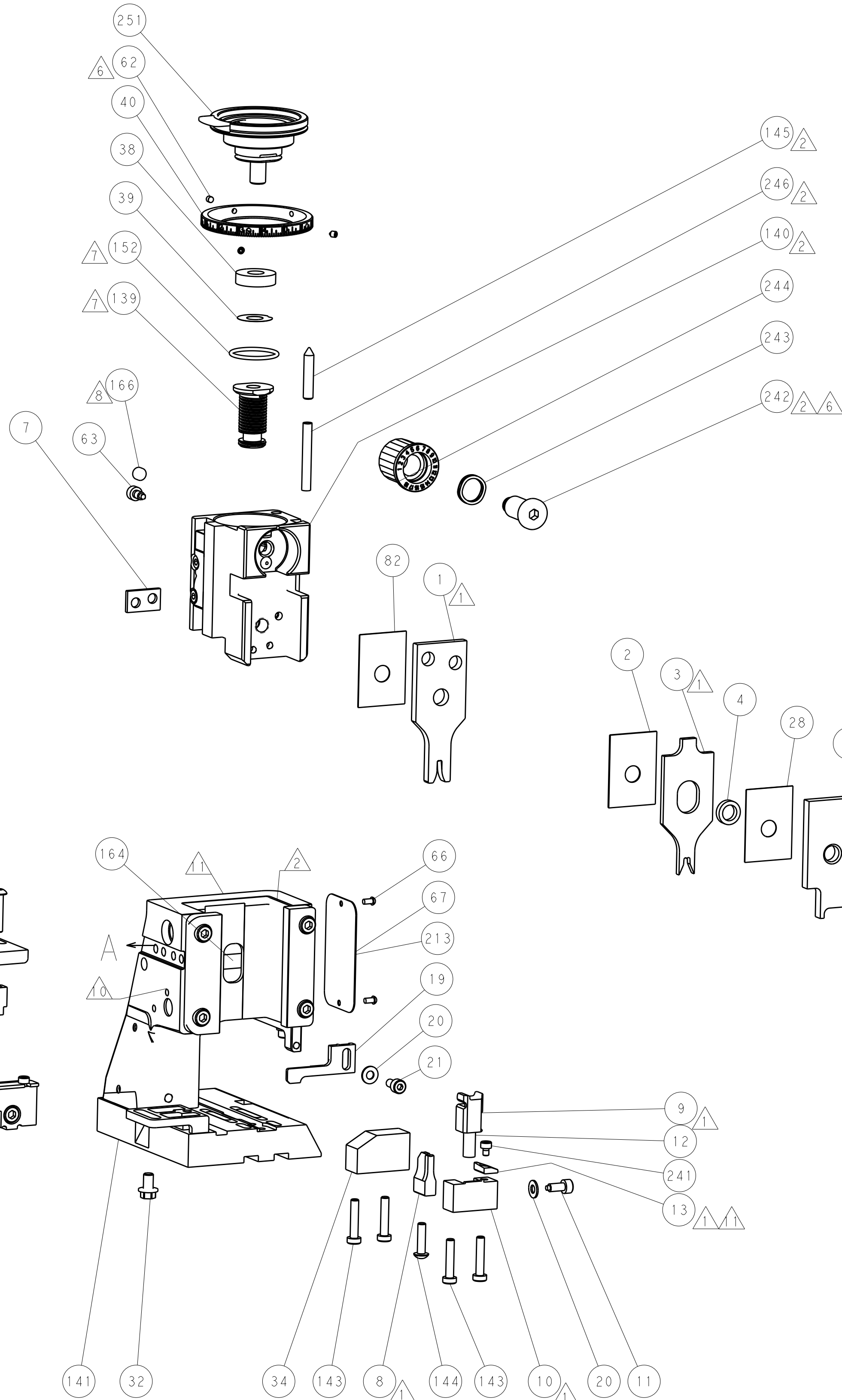
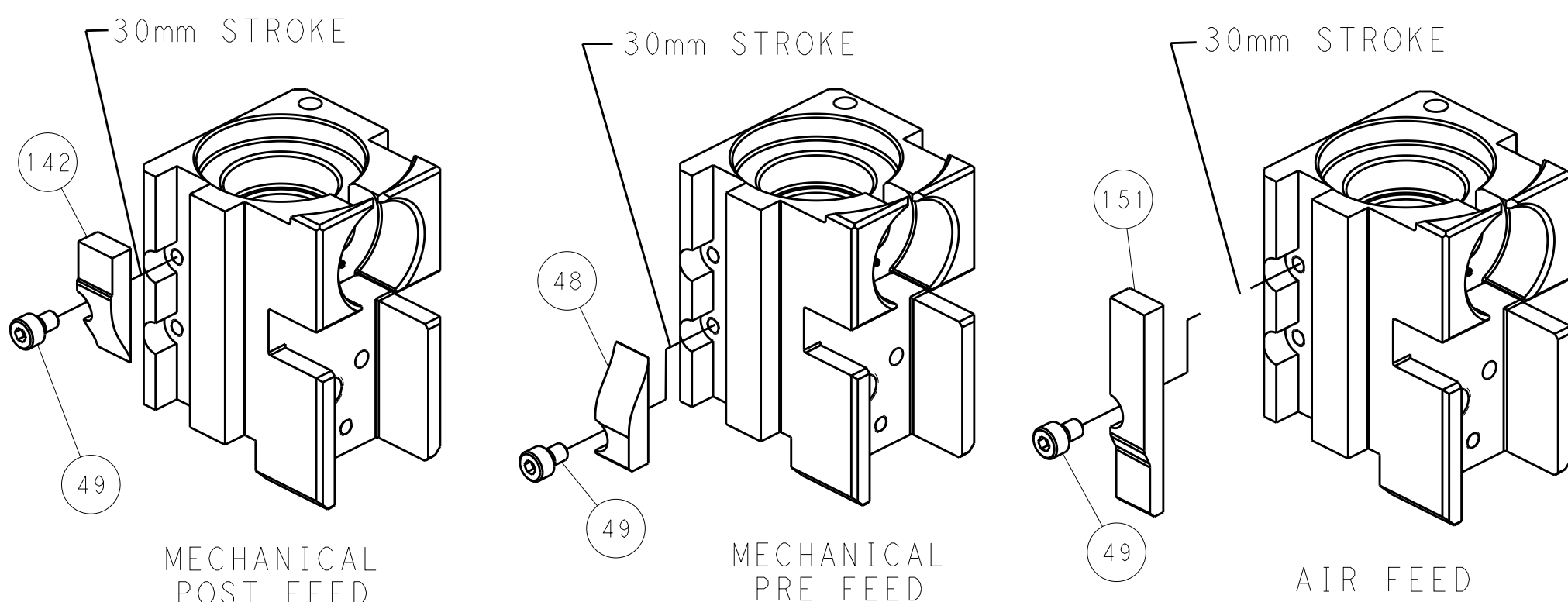
PNEUMATIC



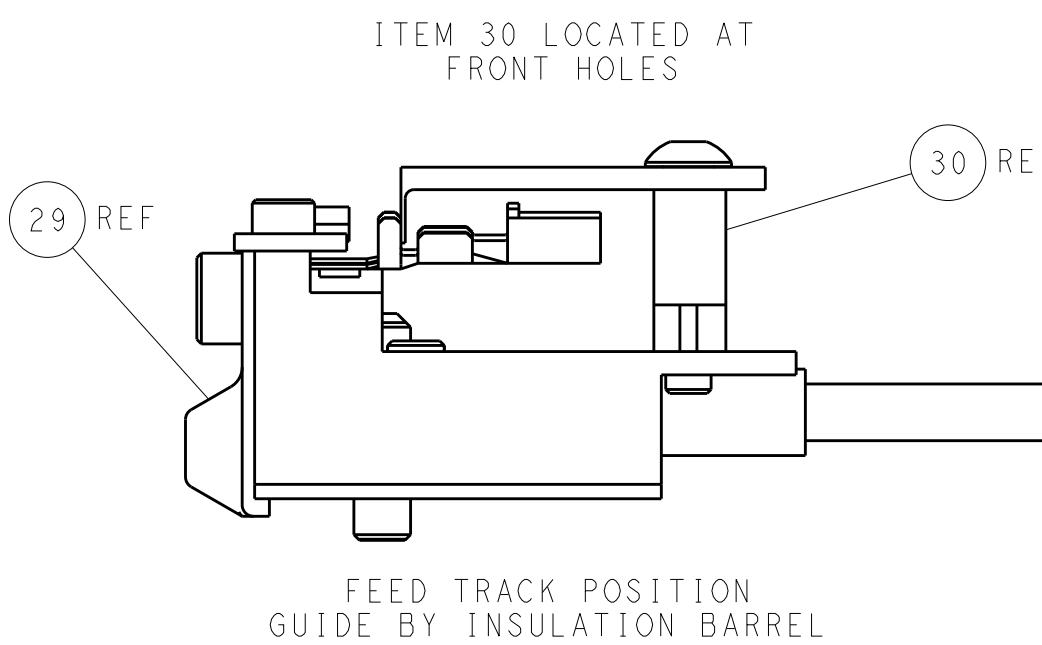
SERVO LATCH PLATE



CAM POSITIONS



TERMINAL SUPPORT LOCATION



FEED TRACK POSITION
GUIDE BY INSULATION BARREL

PACIFIC VERSION
Shown on sheets 3 of 4 & 4 of 4
(Atlantic version shown on sheets 1 of 4 & 2 of 4)

DIMENSIONS:		TOLERANCES UNLESS OTHERWISE SPECIFIED:		DWN		K. ZHANG		20JUN2018		STE		TE Connectivity		Harrisburg, PA 17105-3608	
mm		0 PLC ±.1		CHK		K. ZHANG		20JUN2018		NAME		Ocean Side Feed		-	
APVD		1 PLC ±.1		APVD		K. ZHANG		20JUN2018		PRODUCT SPEC		SIZE		CAGE CODE	
MATERIAL		2 PLC ±.1		MATERIAL		-		-		APPLICATION SPEC		DRAWING NO		RESTRICTED TO	
FINISH		3 PLC ±.1		FINISH		-		-		WEIGHT		A		00779	
ANGLES		4 PLC ±.1		ANGLES		-		-		Customer Accessible Production Drawing		SCALE		1:2	
		5 PLC ±.1										SHEET		4	
		6 PLC ±.1										OF		4	
		7 PLC ±.1										REV		A	

SHEETS 1 & 2 ARE NOT REQUIRED FOR PACIFIC VERSION