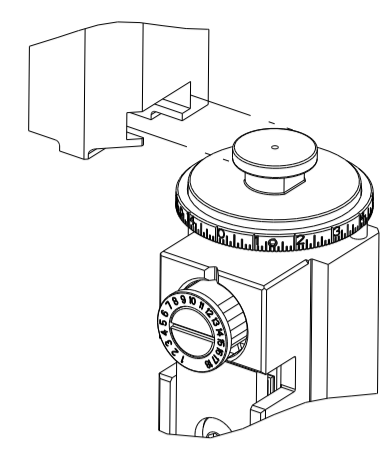


| PART NUMBER | REVISION | DESCRIPTION                      | FEED TYPE  |
|-------------|----------|----------------------------------|------------|
| 2837279-1   | B        | FINE CRIMP HEIGHT ADJUST         | MECHANICAL |
| 2837279-2   | B        | FINE CRIMP HEIGHT ADJUST         | PNEUMATIC  |
| 7-2837279-1 | B        | MECHANICAL AND CRIMP TOOLING KIT | MECHANICAL |
| 7-2837279-2 | B        | PNEUMATIC AND CRIMP TOOLING KIT  | PNEUMATIC  |
| 7-2837279-7 | A        | CRIMP TOOLING KIT                | -          |

ATLANTIC VERSION TERMINATOR INTERFACE ADAPTER



| APPLICATOR DATA |                |      |
|-----------------|----------------|------|
| CRIMP           | SIZE           | TYPE |
| WIRE            | 1.83 mm [.072] | F    |
| INSUL           | 2.54 mm [.100] | F    |

APPLICATOR INSTRUCTIONS  
408-35042

| TERMINAL DATA: DELPHI TERMINAL DELPHI CRIMP SPECIFICATION |                                       |             |                 |
|---|---------------------------------------|-------------|-----------------|
| TERMINAL NAME: 280 TAXI TERMINAL                          |                                       |             |                 |
| WIRE STRIP LENGTH   | TERMINAL INSULATION DIAMETER RANGE    |             |                 |
| 4.93-5.69 mm [.194-.224 IN]                               | Ø1.20-1.70 mm [.047-.067 IN]          |             |                 |
| TERMINAL APPLICATION SPECIFICATION                        | CRIMP INFORMATION SHEET PAGE 11 OF 13 |             |                 |
| TERMINALS APPLIED   |                                       |             |                 |
| TE TERMINAL   | DELPHI TERMINAL                       | TE TERMINAL | DELPHI TERMINAL |
| 3311199-1   | 12186458                              |             |                 |

| WIRE SIZE | CRIMP HEIGHT mm [INCH]     | CRIMP HEIGHT REFERENCE SETTING |
|-----------|----------------------------|--------------------------------|
| 0.50mm2   | 1.40+/-0.05 [.055+/- .002] | 7.9                            |
| 0.35mm2   | 1.30+/-0.05 [.051+/- .002] | 8.9                            |



- 1. RECOMMENDED SPARE PARTS
- 2. REFER TO SUPPLIED INSTRUCTION SHEET FOR CLEANING, LUBRICATION AND STORAGE OF APPLICATOR.
- 3. APPLY PART NUMBER 1-23419-5 LOCTITE TO THREADS OF ITEMS 180. APPLY PART NUMBER 2-23419-6 LOCTITE TO THREADS OF ITEM 242.
- 4. CRIMP HEIGHT REFERENCE SETTING WAS THE SETTING USED WHEN THE APPLICATOR WAS QUALIFIED AT THE FACTORY. ADJUSTMENT MAY BE NECESSARY WHEN RUNNING APPLICATOR IN THE FIELD.
- 5. TERMINAL LUBRICANT IS RECOMMENDED.
- 6. UNLESS SPECIFIED OTHERWISE TORQUE VALUES SHALL BE USED PER DOCUMENT, 101-35000.

**\*WARNING**  
ON INSTALLATION, SET WIRE DISC TO CRIMP HEIGHT REFERENCE SETTING FOR LARGEST WIRE SIZE. CRIMP HEIGHT REFERENCE SETTINGS GREATER THAN THE VALUE SHOWN MAY CAUSE DAMAGE TO THE CRIMP TOOLING, REFER TO THE INSTRUCTION SHEET FOR PROPER SETUP AND ADJUSTMENTS.

**ATLANTIC VERSION**  
Shown on sheets 1 of 4 & 2 of 4  
(Pacific version shown on sheets 3 of 4 & 4 of 4)

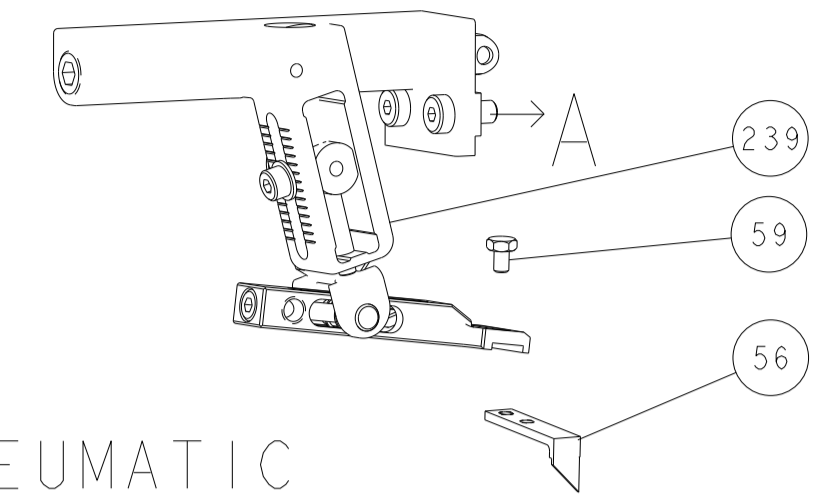
| LOC | DIST | REVISIONS |     |               |           |     |      |
|-----|------|-----------|-----|---------------|-----------|-----|------|
|     |      | P         | LTN | DESCRIPTION   | DATE      | OWN | APVD |
| A   | 66   |           |     | RELEASED      | 15JUN2018 | LG  | CT   |
|     |      |           |     | ECR-22-140796 | 30MAY2022 | FJ  | TE   |
|     |      |           |     | ECR-22-144986 | 05JUL2022 | TB  | GB   |

|     |     |     |     |     |             |                                     |                       |   |
|-----|-----|-----|-----|-----|-------------|-------------------------------------|-----------------------|---|
| -   | 1   | 1   | 1   | 1   | 1803078-3   | SPACER, PRECISION                   | 259                   |   |
| -   | 1   | -   | 1   | -   | 2119641-1   | FEED CAM, AIR FEED                  | 248                   |   |
| -   | 1   | 1   | 1   | 1   | 2119082-5   | CAM, SNAIL, INSULATION ADJUSTMENT   | 244                   |   |
| -   | 1   | 1   | 1   | 1   | 2079764-1   | WASHER, WAVE SPRING, CREST-TO-CREST | 243                   |   |
| 3   | -   | 1   | 1   | 1   | 2119083-1   | RETAINER, INSULATION DIAL           | 242                   |   |
| -   | 1   | 1   | 1   | 1   | 7-18023-7   | SCR, SKT HD CAP M3 X 4.0            | 241                   |   |
| -   | -   | 1   | -   | 1   | 2119580-1   | MECHANICAL FEED ASSEMBLY            | 239                   |   |
| -   | 1   | -   | 1   | -   | 2844940-1   | AIR FEED MODULE                     | 238                   |   |
| 3   | -   | 1   | 1   | 1   | 2-1752354-3 | STANDOFF, HOLD-DOWN                 | 180                   |   |
| -   | 1   | 1   | 1   | 1   | 6-993111-6  | PIN, SLOTTED SPRING 3.0 X 14.0      | 177                   |   |
| -   | 1   | 1   | 1   | 1   | 8-22280-7   | SPRING, COMPRESSION                 | 176                   |   |
| -   | 1   | 1   | 1   | 1   | 1752353-2   | GUIDE PIN, HOLDDOWN                 | 175                   |   |
| -   | 1   | 1   | 1   | 1   | 1901680-2   | GUIDE PIN, HOLDDOWN                 | 174                   |   |
| 5   | -   | REF | REF | REF | 994970-2    | COUNTER, MAGNETIC                   | 164                   |   |
| -   | 1   | 1   | 1   | 1   | 2119955-1   | ASSY, LUBRICATOR, SIDE FEED         | 113                   |   |
| -   | 1   | 1   | 1   | 1   | 2844908-1   | SCREW, LOCKING                      | 99                    |   |
| -   | 1   | 1   | 1   | 1   | 2844907-1   | POST, LOCKING                       | 98                    |   |
| -   | 1   | 1   | 1   | 1   | 1-455888-6  | SPACER, CRIMPER                     | 82                    |   |
| -   | 1   | 1   | 1   | 1   | 1803607-3   | DOCUMENTATION PACKAGE               | 71                    |   |
| -   | 1   | 1   | 1   | 1   | 2119740-1   | TAG, IDENTIFICATION                 | 67                    |   |
| -   | 2   | 2   | 2   | 2   | 2168078-1   | SCREW, DRIVE, RH, RoHS, 2 x .188    | 66                    |   |
| -   | 1   | 1   | 1   | 1   | 2168083-2   | SCR, SKT HD CAP, RoHS, M4 X 8.0     | 60                    |   |
| -   | 1   | 1   | 1   | 1   | 5-18022-5   | SCR, HEX HD CAP, M4 X 6.0           | 59                    |   |
| -   | 1   | 1   | 1   | 1   | 1338685-1   | PAWL, FEED                          | 56                    |   |
| -   | 4   | 4   | 4   | 4   | 2168083-3   | SCR, SKT HD CAP, RoHS, M4 X 12.0    | 54                    |   |
| -   | 1   | 1   | 1   | 1   | 1-5018030-0 | NUT, HEX, REG, RoHS, M3.5           | 52                    |   |
| -   | 1   | 1   | 1   | 1   | 2-1901681-0 | HOLDDOWN, TERMINAL                  | 51                    |   |
| -   | 1   | 2   | 1   | 2   | 18023-9     | SCR, SKT HD CAP M4 X 6.0            | 49                    |   |
| -   | -   | 1   | -   | 1   | 2119652-1   | FEED CAM, PRE FEED                  | 48                    |   |
| -   | -   | 1   | -   | 1   | 2119653-1   | FEED CAM, POST FEED                 | 47                    |   |
| -   | 1   | 1   | 1   | 1   | 1803583-9   | APPLICATOR BASIC ASSEMBLY, SF       | 46                    |   |
| -   | 1   | 1   | 1   | 1   | 1803515-2   | RAM ASSEMBLY, SF ATLANTIC           | 44                    |   |
| -   | 1   | 1   | 1   | 1   | 1803602-2   | SCR, BHSC, RoHS (M8 X 40)           | 41                    |   |
| -   | 1   | 1   | 1   | 1   | 1752356-1   | SUPPORT, TERMINAL                   | 34                    |   |
| -   | 2   | 2   | 2   | 2   | 2079383-5   | SCR, BHSC, RoHS (M4 X 20)           | 33                    |   |
| -   | 2   | 2   | 2   | 2   | 3-2844962-0 | SPACER, CYLINDRICAL, STRIP GUIDE    | 30                    |   |
| -   | 1   | 1   | 1   | 1   | 2844992-1   | ASSEMBLY, STRIP GUIDE               | 29                    |   |
| -   | 1   | 1   | 1   | 1   | 455888-3    | SPACER, CRIMPER                     | 28                    |   |
| -   | 1   | 1   | 1   | 1   | 2-1320928-2 | STRIP GUIDE                         | 24                    |   |
| -   | 1   | 1   | 1   | 1   | 2168083-2   | SCR, SKT HD CAP, RoHS, M4 X 8.0     | 21                    |   |
| -   | 2   | 2   | 2   | 2   | 1-18028-2   | WASHER, FLAT, REG M4                | 20                    |   |
| -   | 1   | 1   | 1   | 1   | 2119533-1   | STRIPPER, SIDE FEED                 | 19                    |   |
| 1   | -   | 1   | 1   | 1   | 2119806-1   | INSERT, SHEAR                       | 13                    |   |
| -   | 1   | 1   | 1   | 1   | 3-22280-3   | SPRING, COMPRESSION                 | 12                    |   |
| -   | 1   | 1   | 1   | 1   | 1-356885-5  | STOP, SHEAR                         | 11                    |   |
| 1   | -   | 1   | 1   | 1   | 2119805-1   | SHEAR HOLDER, FRONT                 | 10                    |   |
| 1   | -   | 1   | 1   | 1   | 1803095-3   | FLOATING SHEAR, FRONT               | 9                     |   |
| 1   | 2   | 2   | 1   | 1   | 3-1803554-8 | ANVIL, COMBINATION                  | 8                     |   |
| -   | -   | -   | -   | -   | -           | -                                   | 7                     |   |
| -   | -   | -   | -   | -   | -           | -                                   | 6                     |   |
| -   | 1   | 1   | 1   | 1   | 2119757-4   | DEPRESSOR, SHEAR                    | 5                     |   |
| -   | 1   | 1   | 1   | 1   | 1-238011-8  | BLOCK, CRIMPER SPACER               | 4                     |   |
| 1   | 1   | 2   | 2   | 1   | 1           | 8-1803016-1                         | CRIMPER, INSULATION F | 3 |
| -   | 1   | 1   | 1   | 1   | 1           | 1-455888-9                          | SPACER, CRIMPER       | 2 |
| 1   | 1   | 2   | 2   | 1   | 1           | 2-1803325-0                         | CRIMPER, WIRE         | 1 |
| -77 | -72 | -71 | -2  | -1  | PART NO     | DESCRIPTION                         | ITEM NO               |   |

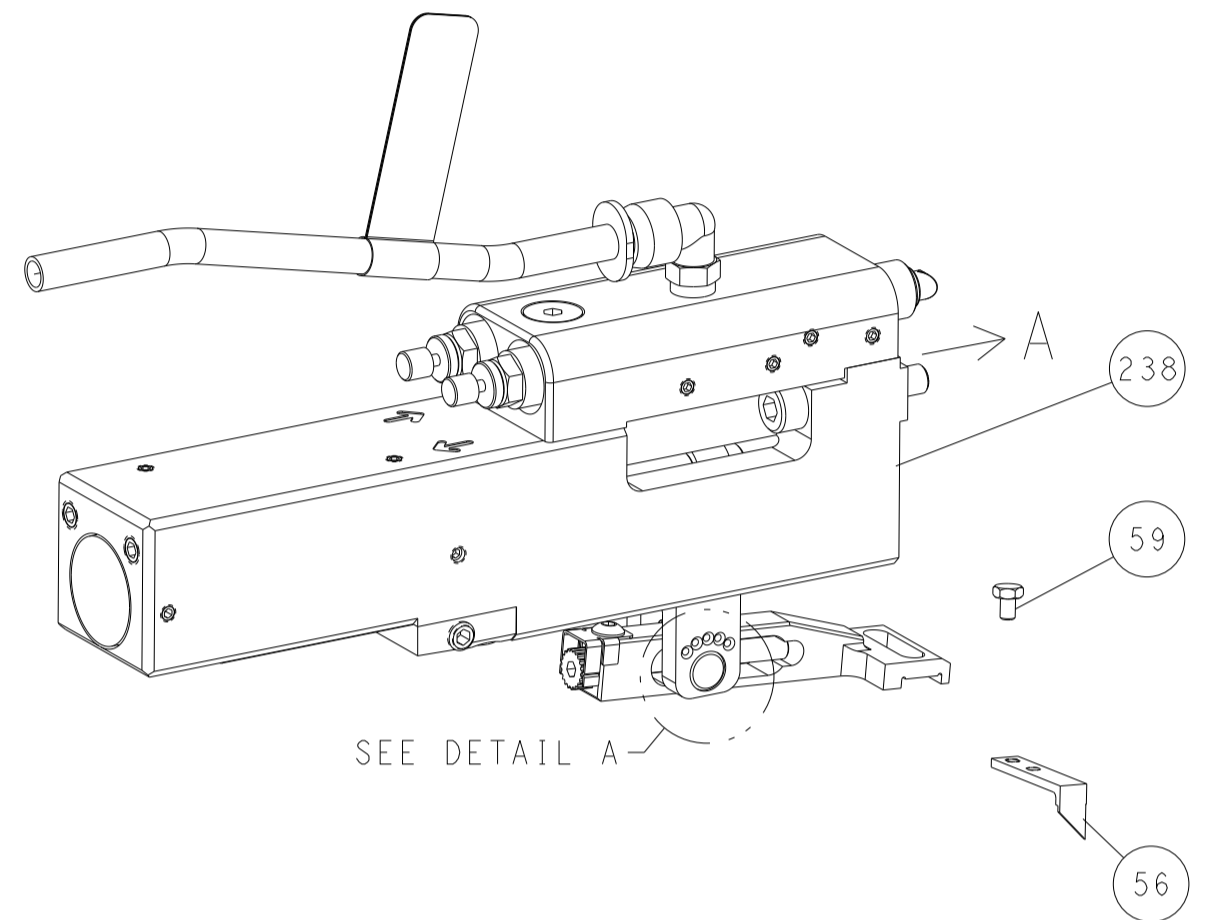
| DIMENSIONS:                            |         | TOLERANCES UNLESS OTHERWISE SPECIFIED: |         | APPROVED:    |         | NAME:    |        |
|--|---------|--|---------|--------------|---------|----------|--------|
| mm                                     | 0 PLC ± | 1 PLC ±                                | 2 PLC ± | 3 PLC ±      | 4 PLC ± | ANGLES ± | FINISH |
| MATERIAL:                              |         | FINISH:                                |         | WEIGHT:      |         | SCALE:   |        |
| Customer Accessible Production Drawing |         | SCALE: 1:2                             |         | SHEET 1 OF 4 |         | REV: B1  |        |

| LOC | DIST | REVISIONS   |      |     |      |
|-----|------|-------------|------|-----|------|
| P   | LTN  | DESCRIPTION | DATE | OWN | APVD |
| -   | -    | SEE SHEET 1 | -    | -   | -    |
|     |      |             |      |     |      |
|     |      |             |      |     |      |

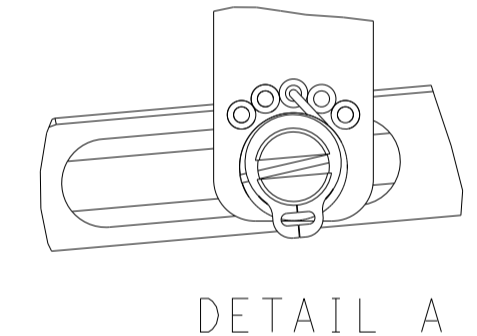
# FEED TYPE MECHANICAL



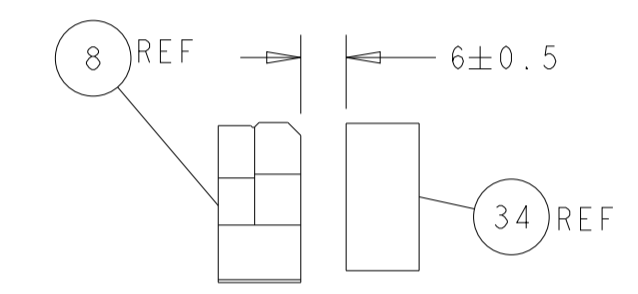
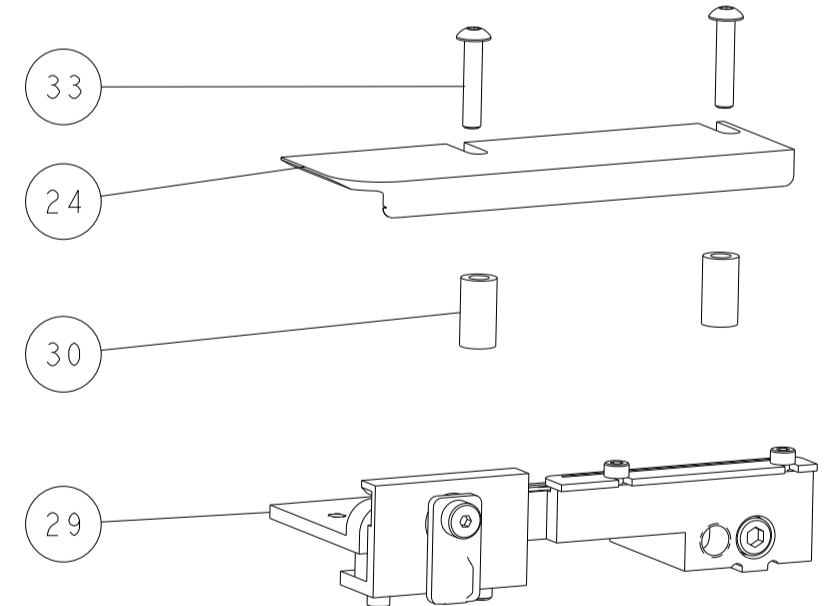
## PNEUMATIC



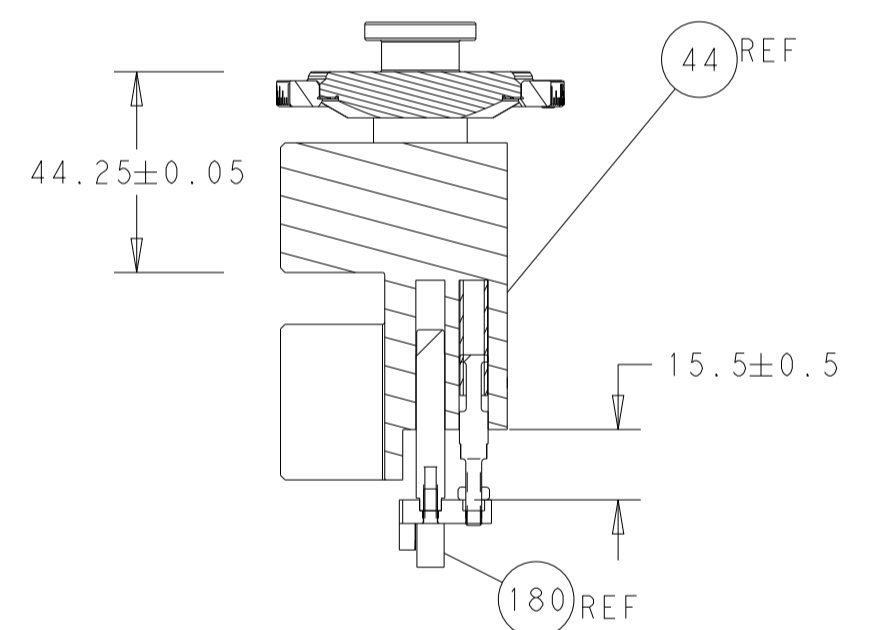
## FEED SPRING SETTING POSITION (SHOWN FROM REAR SIDE)



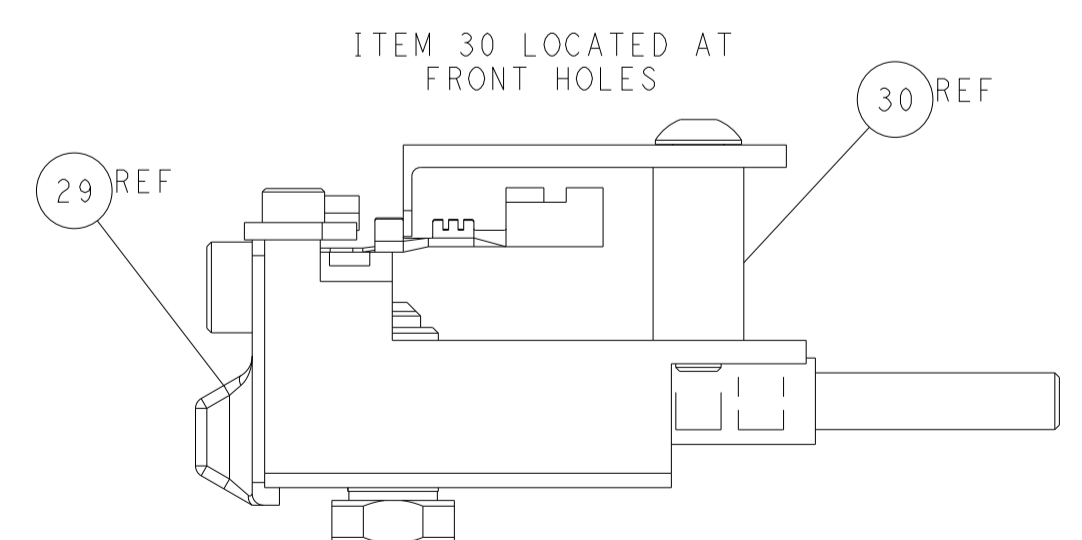
DETAIL A



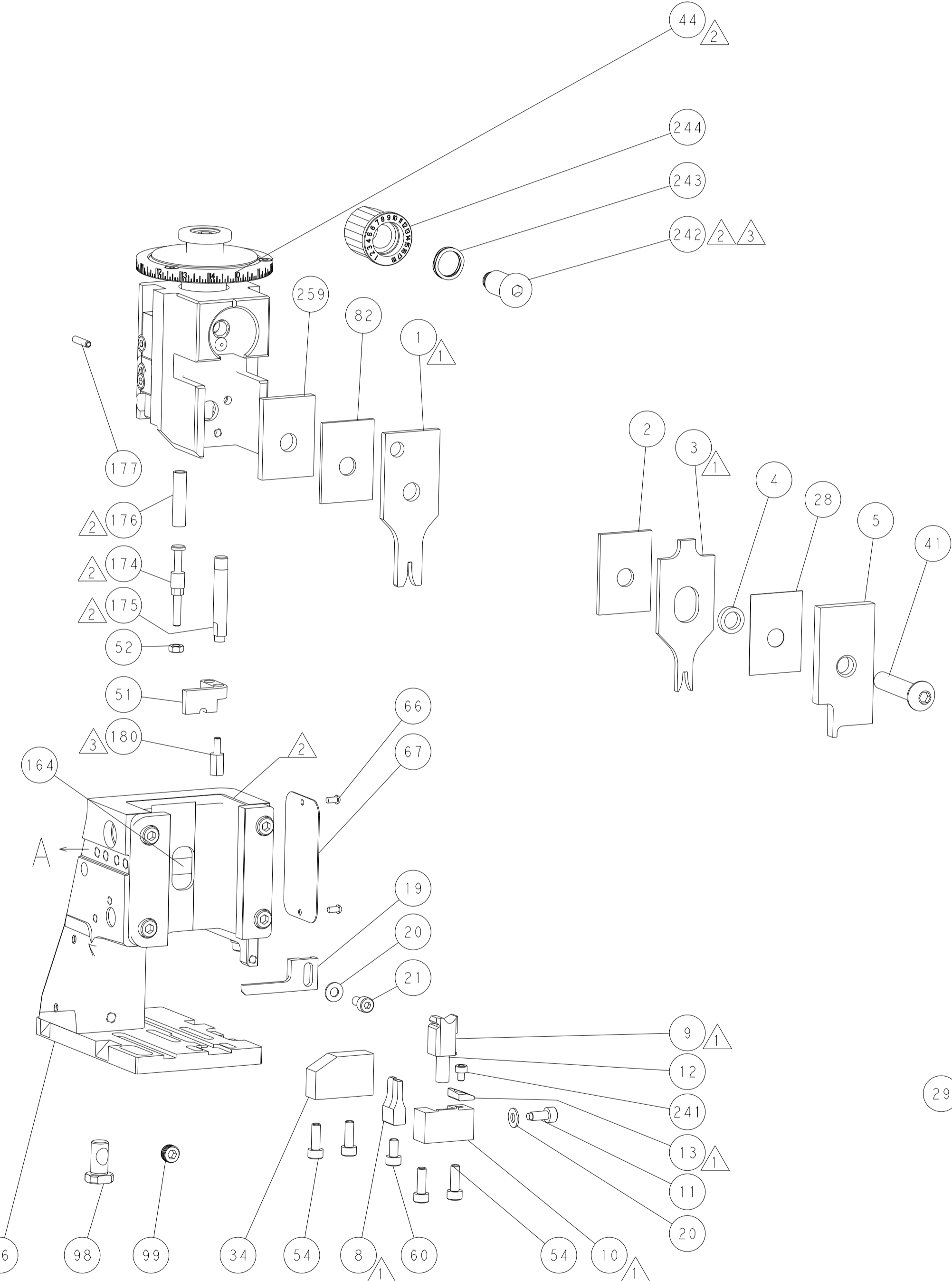
TERMINAL SUPPORT LOCATION



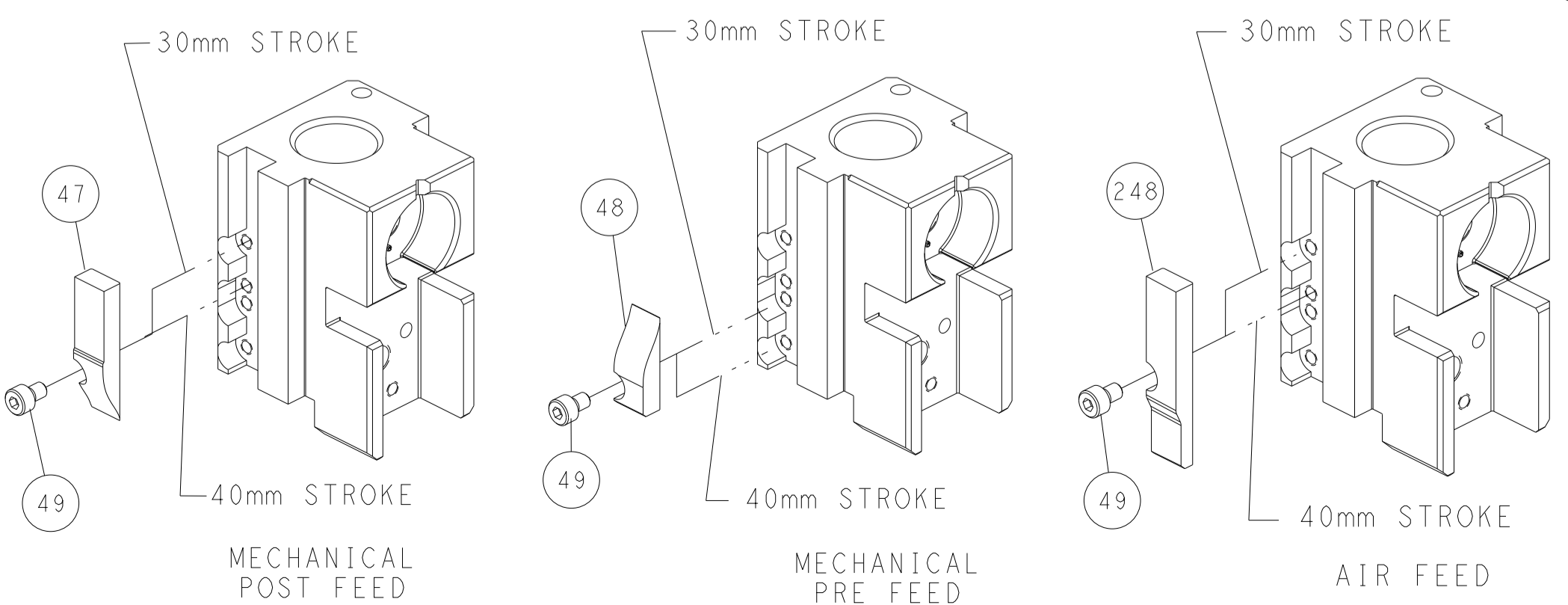
RAM AND HOLDDOWN SET-UP



FEED TRACK POSITION GUIDE BY INSULATION BARREL



# CAM POSITIONS

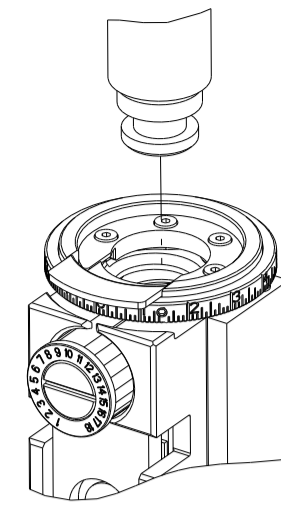


**ATLANTIC VERSION**  
 Shown on sheets 1 of 4 & 2 of 4  
 (Pacific version shown on sheets 3 of 4 & 4 of 4)

|  |   |   |  |
|--|---|---|--|
| <small>THIS DRAWING IS UNPUBLISHED. RELEASED FOR PUBLICATION BY TYCO ELECTRONICS CORPORATION. ALL RIGHTS RESERVED.</small>       |   | DWN R. KNEPPER 15-MAY-18<br>CHK T. BROOKENS 15-MAY-18<br>APVD J. DEGRANGE 15-MAY-18               | TE Connectivity<br>Harrisburg, PA 17105-3608 |
| DIMENSIONS: mm<br>TOLERANCES UNLESS OTHERWISE SPECIFIED:<br>0 PLC ±<br>1 PLC ±<br>2 PLC ±<br>3 PLC ±<br>4 PLC ±<br>ANGLES FINISH | PRODUCT SPEC<br>APPLICATION SPEC<br>WEIGHT<br>SCALE 1:2 | NAME Ocean Side Feed Applicator<br>SIZE CAGE CODE DRAWING NO. A1 00779 C=2837279<br>RESTRICTED TO | SHEET 2 OF 4 REV B1                          |

| PART NUMBER | REVISION | DESCRIPTION              | FEED TYPE  |
|-------------|----------|--------------------------|------------|
| 2-2837279-1 | B        | FINE CRIMP HEIGHT ADJUST | MECHANICAL |
| 2-2837279-2 | B        | FINE CRIMP HEIGHT ADJUST | PNEUMATIC  |
| 7-2837279-7 | A        | CRIMP TOOLING KIT        | -          |

PACIFIC VERSION TERMINATOR  
INTERFACE ADAPTER



| APPLICATOR DATA                      |                |      |
|--------------------------------------|----------------|------|
| CRIMP                                | SIZE           | TYPE |
| WIRE                                 | 1.83 mm [.072] | F    |
| INSUL                                | 2.54 mm [.100] | F    |
| APPLICATOR INSTRUCTIONS<br>408-35042 |                |      |

|   |  |
|---|--|
| TERMINAL DATA: DELPHI TERMINAL DELPHI CRIMP SPECIFICATION |  |
| TERMINAL NAME: 280 TAXI TERMINAL                          |  |
| WIRE STRIP LENGTH<br>4.93-5.69 mm [1.94-.224 IN]          | TERMINAL INSULATION DIAMETER RANGE<br>Ø1.20-1.70 mm [.047-.067 IN] |
| TERMINAL APPLICATION SPECIFICATION                        | CRIMP INFORMATION SHEET<br>PAGE 11 OF 13                           |
| TERMINALS APPLIED   |  |
| TE TERMINAL<br>3311199-1                                  | DELPHI TERMINAL<br>12186458  |

| WIRE SIZE | CRIMP HEIGHT mm [INCH]        | CRIMP HEIGHT REFERENCE SETTING |
|-----------|-------------------------------|--------------------------------|
| 0.50mm2   | 1.40 +/- 0.05 [.055 +/- .002] | 7.9                            |
| 0.35mm2   | 1.30 +/- 0.05 [.051 +/- .002] | 8.9                            |



- 1. RECOMMENDED SPARE PARTS
- 2. REFER TO SUPPLIED INSTRUCTION SHEET FOR CLEANING, LUBRICATION AND STORAGE OF APPLICATOR.
- 3. APPLY PART NUMBER 1-23419-5 LOCTITE TO THREADS OF ITEMS 180. APPLY PART NUMBER 2-23419-6 LOCTITE TO THREADS OF ITEM 242.
- 4. CRIMP HEIGHT REFERENCE SETTING WAS THE SETTING USED WHEN THE APPLICATOR WAS QUALIFIED AT THE FACTORY. ADJUSTMENT MAY BE NECESSARY WHEN RUNNING APPLICATOR IN THE FIELD.
- 5. TERMINAL LUBRICANT IS RECOMMENDED.
- 6. UNLESS SPECIFIED OTHERWISE TORQUE VALUES SHALL BE USED PER DOCUMENT, 101-35000.

**\*WARNING**  
ON INSTALLATION, SET WIRE DISC TO CRIMP HEIGHT REFERENCE SETTING FOR LARGEST WIRE SIZE. CRIMP HEIGHT REFERENCE SETTINGS GREATER THAN THE VALUE SHOWN MAY CAUSE DAMAGE TO THE CRIMP TOOLING, REFER TO THE INSTRUCTION SHEET FOR PROPER SETUP AND ADJUSTMENTS.

PACIFIC VERSION  
Shown on sheets 3 of 4 & 4 of 4  
(Atlantic version shown on sheets 1 of 4 & 2 of 4)

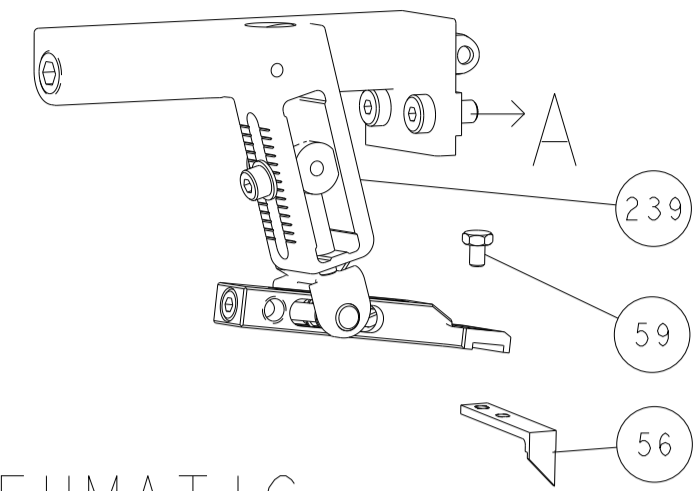
| LOC | DIST | REVISIONS |     |             |      |     |      |
|-----|------|-----------|-----|-------------|------|-----|------|
| A   | 66   | P         | LTN | DESCRIPTION | DATE | OWN | APVD |
| -   | -    | -         | -   | SEE SHEET 1 | -    | -   | -    |

|   |     |     |             |                                     |     |
|---|-----|-----|-------------|-------------------------------------|-----|
| - | 1   | 1   | 1803078-3   | SPACER, PRECISION                   | 259 |
| - | 1   | 1   | 2119082-5   | CAM, SNAIL, INSULATION ADJUSTMENT   | 244 |
| - | 1   | 1   | 2079764-1   | WASHER, WAVE SPRING, CREST-TO-CREST | 243 |
| 3 | -   | 1   | 2119083-1   | RETAINER, INSULATION DIAL           | 242 |
| - | 1   | 1   | 7-18023-7   | SCR, SKT HD CAP M3 X 4.0            | 241 |
| - | -   | 1   | 2119580-1   | MECHANICAL FEED ASSEMBLY            | 239 |
| - | 1   | -   | 2844940-1   | AIR FEED MODULE                     | 238 |
| 3 | -   | 1   | 2-1752354-3 | STANDOFF, HOLD-DOWN                 | 180 |
| - | 1   | 1   | 6-993111-6  | PIN, SLOTTED SPRING 3.0 X 14.0      | 177 |
| - | 1   | 1   | 8-22280-7   | SPRING, COMPRESSION                 | 176 |
| - | 1   | 1   | 1752353-2   | GUIDE PIN, HOLDDOWN                 | 175 |
| - | 1   | 1   | 1901680-2   | GUIDE PIN, HOLDDOWN                 | 174 |
| - | REF | REF | 994970-2    | COUNTER, MAGNETIC                   | 164 |
| - | 1   | -   | 2119641-2   | FEED CAM, AIR FEED                  | 151 |
| - | 1   | 1   | 2168083-8   | SCR, SKT HD CAP, RoHS, M4 X 16      | 144 |
| - | 4   | 4   | 2168083-9   | SCR, SKT HD CAP, RoHS, M4 X 20      | 143 |
| - | -   | 1   | 2119653-2   | FEED CAM, POST FEED                 | 142 |
| - | 1   | 1   | 1-1803583-0 | APPLICATOR BASIC ASSEMBLY, SF       | 141 |
| - | 1   | 1   | 1803516-2   | RAM ASSEMBLY, SF PACIFIC            | 140 |
| 5 | -   | 1   | 2119955-1   | ASSY, LUBRICATOR, SIDE FEED         | 113 |
| - | 1   | 1   | 2844908-1   | SCREW, LOCKING                      | 99  |
| - | 1   | 1   | 2844907-1   | POST, LOCKING                       | 98  |
| - | 1   | 1   | 1-455888-6  | SPACER, CRIMPER                     | 82  |
| - | 1   | 1   | 1803607-3   | DOCUMENTATION PACKAGE               | 71  |
| - | 1   | 1   | 2119740-1   | TAG, IDENTIFICATION                 | 67  |
| - | 2   | 2   | 2168078-1   | SCREW, DRIVE, RH, RoHS, 2 x .188    | 66  |
| - | 1   | 1   | 5-18022-5   | SCR, HEX HD CAP, M4 X 6.0           | 59  |
| - | 1   | 1   | 1338685-1   | PAWL, FEED                          | 56  |
| - | 1   | 1   | 1-5018030-0 | NUT, HEX, REG, RoHS, M3.5           | 52  |
| - | 1   | 1   | 2-1901681-0 | HOLDDOWN, TERMINAL                  | 51  |
| - | 1   | 2   | 18023-9     | SCR, SKT HD CAP M4 X 6.0            | 49  |
| - | -   | 1   | 2119652-1   | FEED CAM, PRE FEED                  | 48  |
| - | 1   | 1   | 1803602-2   | SCR, BHSC, RoHS (M8 X 40)           | 41  |
| - | 1   | 1   | 1752356-1   | SUPPORT, TERMINAL                   | 34  |
| - | 2   | 2   | 2079383-5   | SCR, BHSC, RoHS (M4 X 20)           | 33  |
| - | 2   | 2   | 3-2844962-0 | SPACER, CYLINDRICAL, STRIP GUIDE    | 30  |
| - | 1   | 1   | 2844992-1   | ASSEMBLY, STRIP GUIDE               | 29  |
| - | 1   | 1   | 455888-3    | SPACER, CRIMPER                     | 28  |
| - | 1   | 1   | 2-1320928-2 | STRIP GUIDE                         | 24  |
| - | 1   | 1   | 2168083-2   | SCR, SKT HD CAP, RoHS, M4 X 8.0     | 21  |
| - | 2   | 2   | 1-18028-2   | WASHER, FLAT, REG M4                | 20  |
| - | 1   | 1   | 2119533-1   | STRIPPER, SIDE FEED                 | 19  |
| 1 | 1   | 1   | 2119806-1   | INSERT, SHEAR                       | 13  |
| - | 1   | 1   | 3-22280-3   | SPRING, COMPRESSION                 | 12  |
| - | 1   | 1   | 1-356885-5  | STOP, SHEAR                         | 11  |
| 1 | 1   | 1   | 2119805-1   | SHEAR HOLDER, FRONT                 | 10  |
| 1 | 1   | 1   | 1803095-3   | FLOATING SHEAR, FRONT               | 9   |
| 1 | 1   | 1   | 3-1803554-8 | ANVIL, COMBINATION                  | 8   |
| - | -   | -   | -           | -                                   | 7   |
| - | -   | -   | -           | -                                   | 6   |
| - | 1   | 1   | 2119757-4   | DEPRESSOR, SHEAR                    | 5   |
| - | 1   | 1   | 1-238011-8  | BLOCK, CRIMPER SPACER               | 4   |
| 1 | 1   | 1   | 8-1803016-1 | CRIMPER, INSULATION F               | 3   |
| - | 1   | 1   | 1-455888-9  | SPACER, CRIMPER                     | 2   |
| 1 | 1   | 1   | 2-1803325-0 | CRIMPER, WIRE                       | 1   |

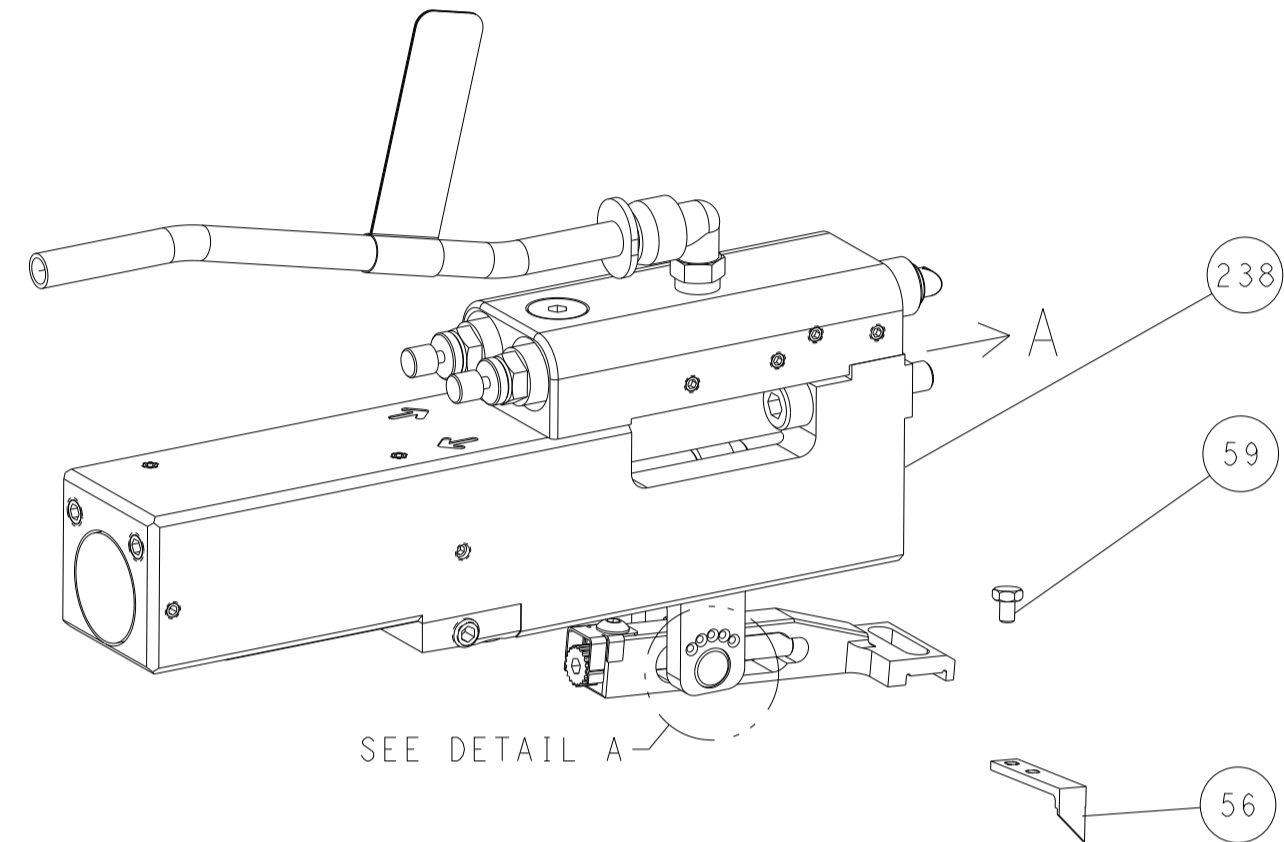
|  |         |  |         |                           |         |  |                                  |
|--|---------|--|---------|---------------------------|---------|--|----------------------------------|
| DIMENSIONS:                            |         | TOLERANCES UNLESS OTHERWISE SPECIFIED: |         | DWG: R. KNEPPER 15-MAY-18 |         | TE Connectivity<br>Harrisburg, PA 17105-3608 |                                  |
| mm                                     | 0 PLC ± | 1 PLC ±                                | 2 PLC ± | 3 PLC ±                   | 4 PLC ± | APVD: J. DEGRANGE 15-MAY-18                  | NAME: Ocean Side Feed Applicator |
| MATERIAL:                              |         | FINISH:                                |         | WEIGHT:                   |         | SIZE: A1 00779 C=2837279                     |                                  |
| Customer Accessible Production Drawing |         |  |         | SCALE: 1:2                |         | SHEET 3 OF 4 REV B1                          |                                  |

| LOC | DIST | REVISIONS |     |             |      |     |      |
|-----|------|-----------|-----|-------------|------|-----|------|
| A   | 66   | P         | LTN | DESCRIPTION | DATE | OWN | APVD |
|     |      | -         |     | SEE SHEET 1 |      |     |      |

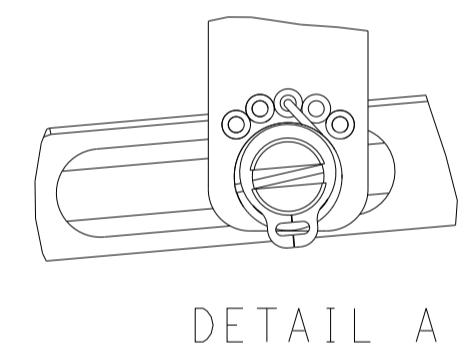
# FEED TYPE MECHANICAL



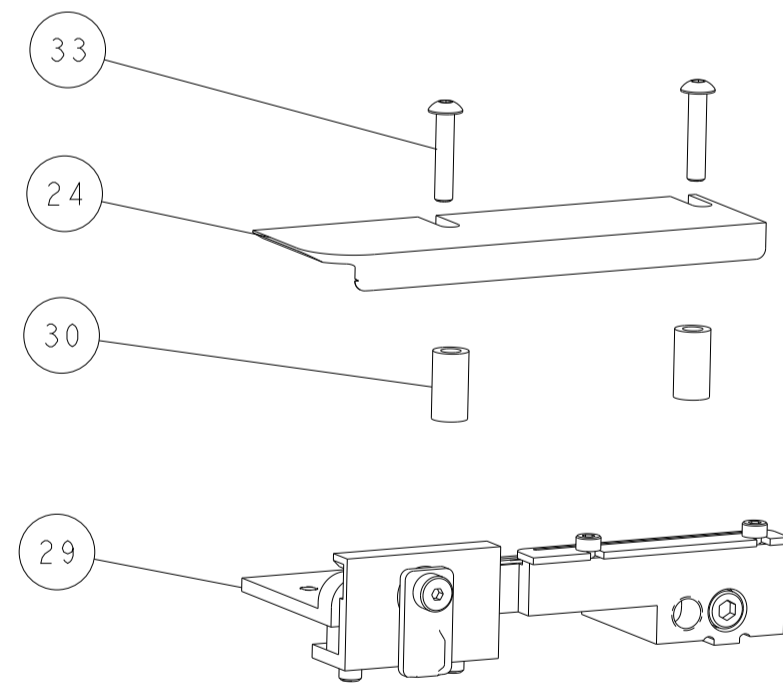
## PNEUMATIC



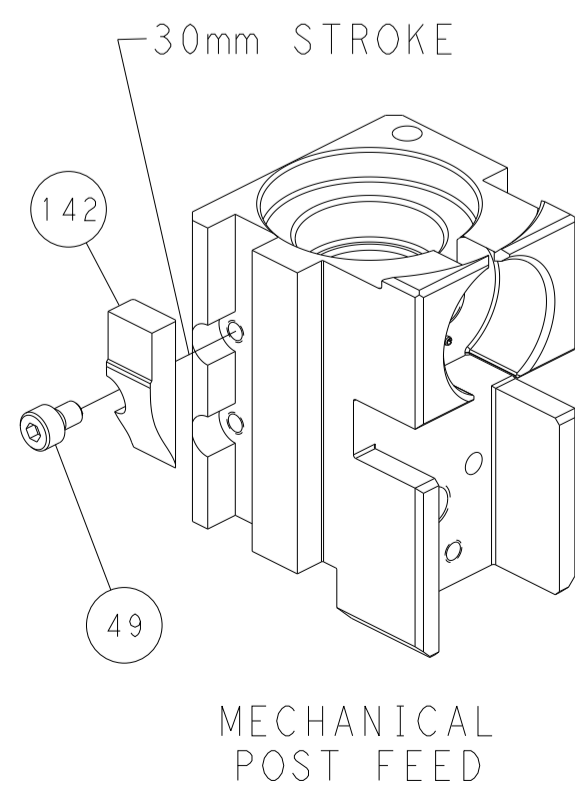
### FEED SPRING SETTING POSITION (SHOWN FROM REAR SIDE)



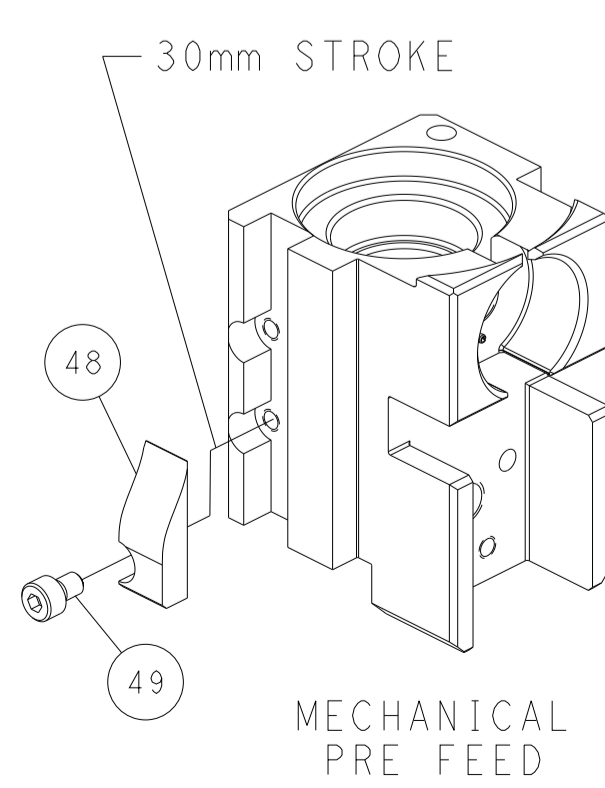
DETAIL A



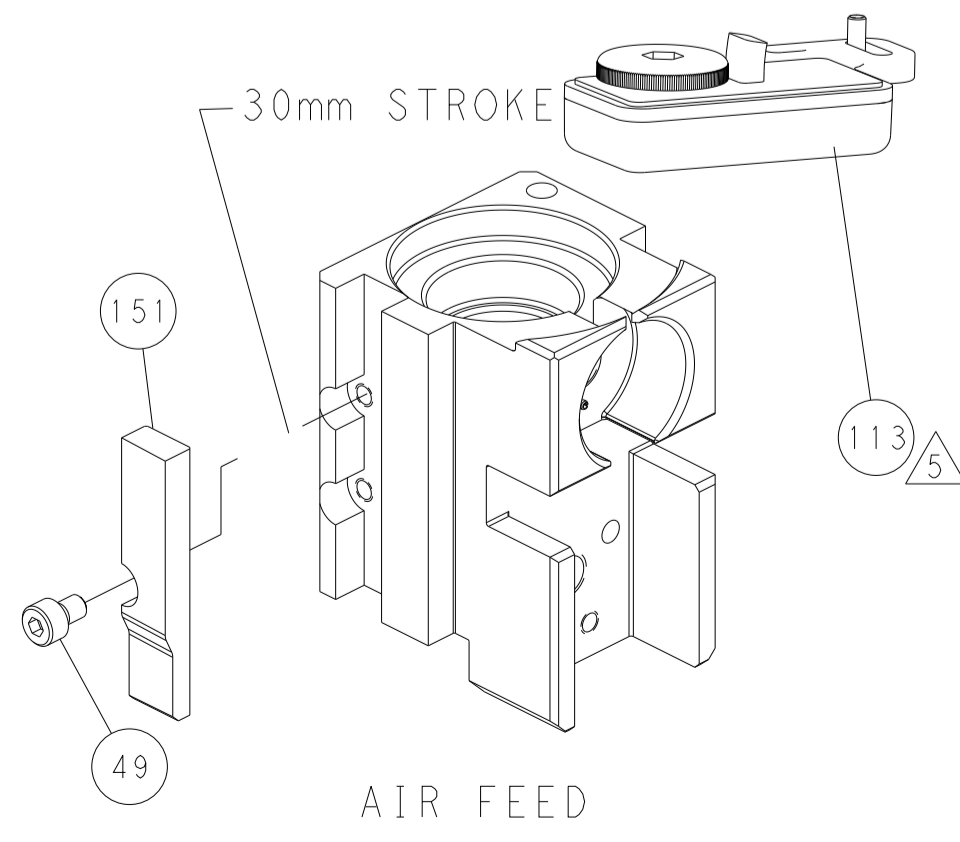
## CAM POSITIONS



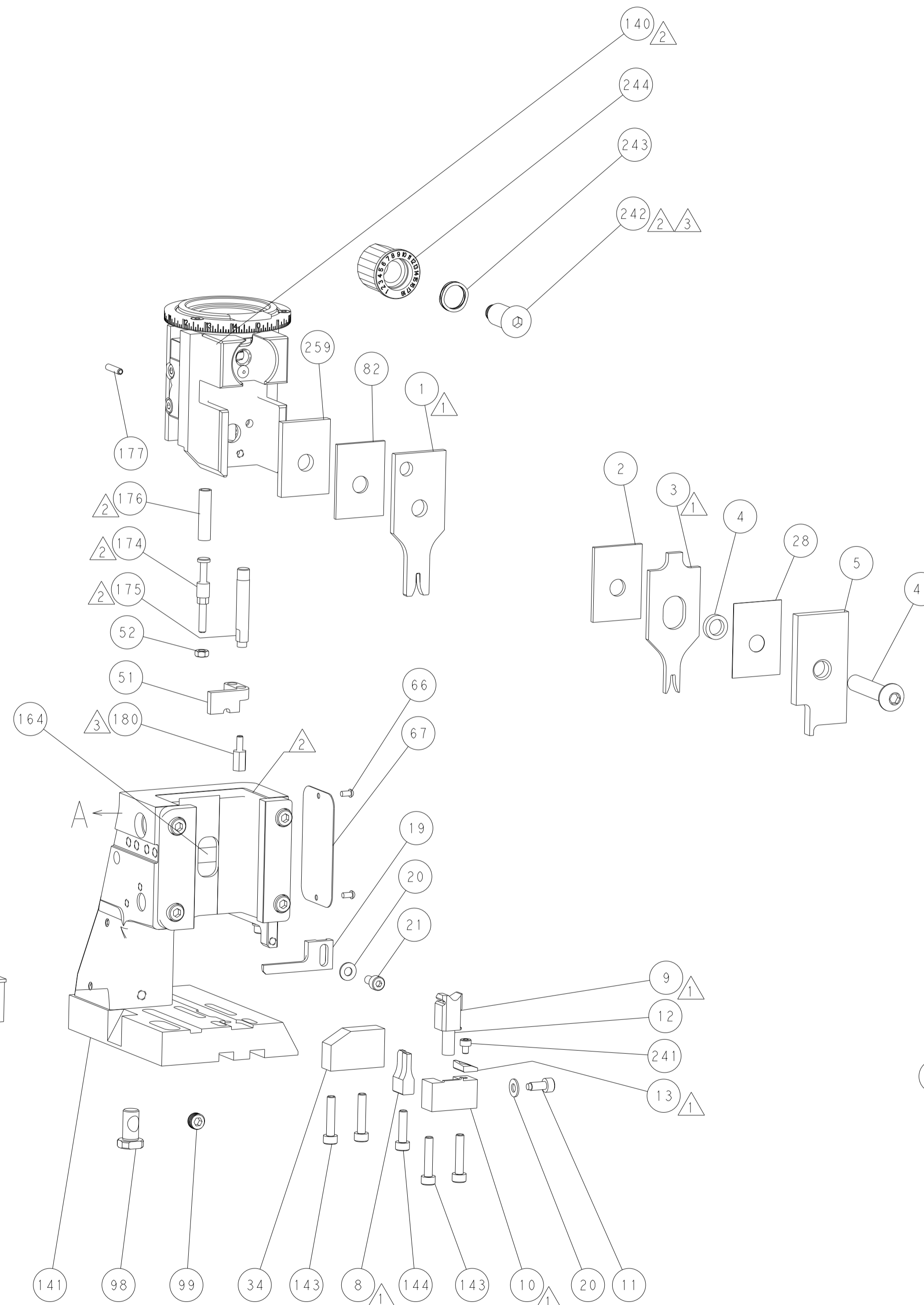
MECHANICAL  
POST FEED



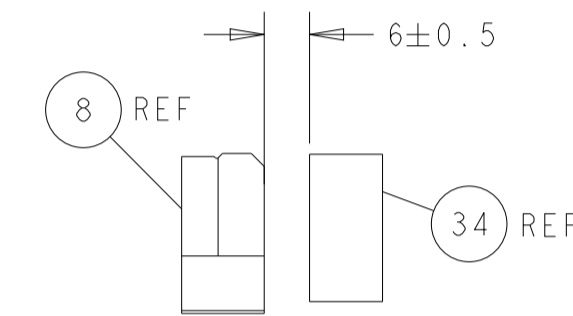
MECHANICAL  
PRE FEED



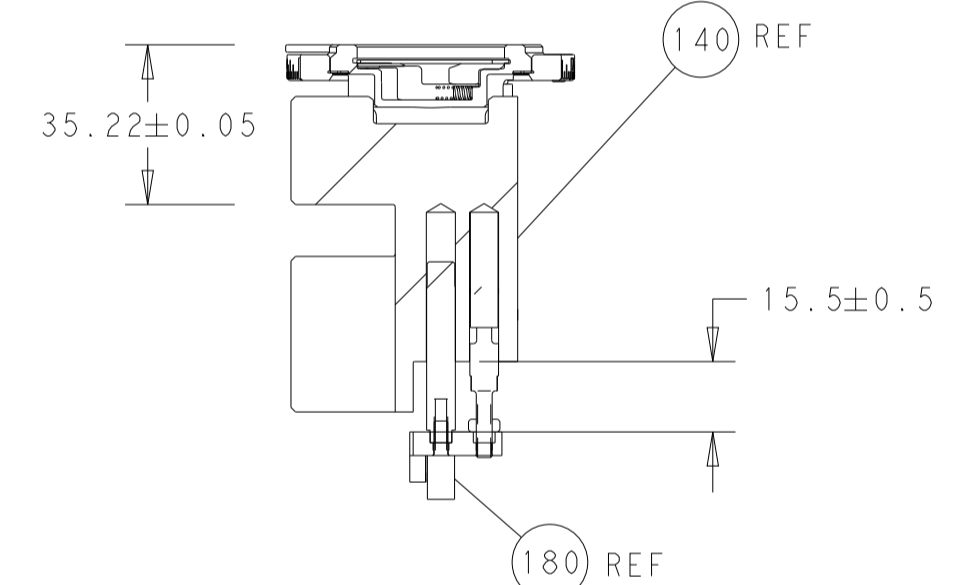
AIR FEED



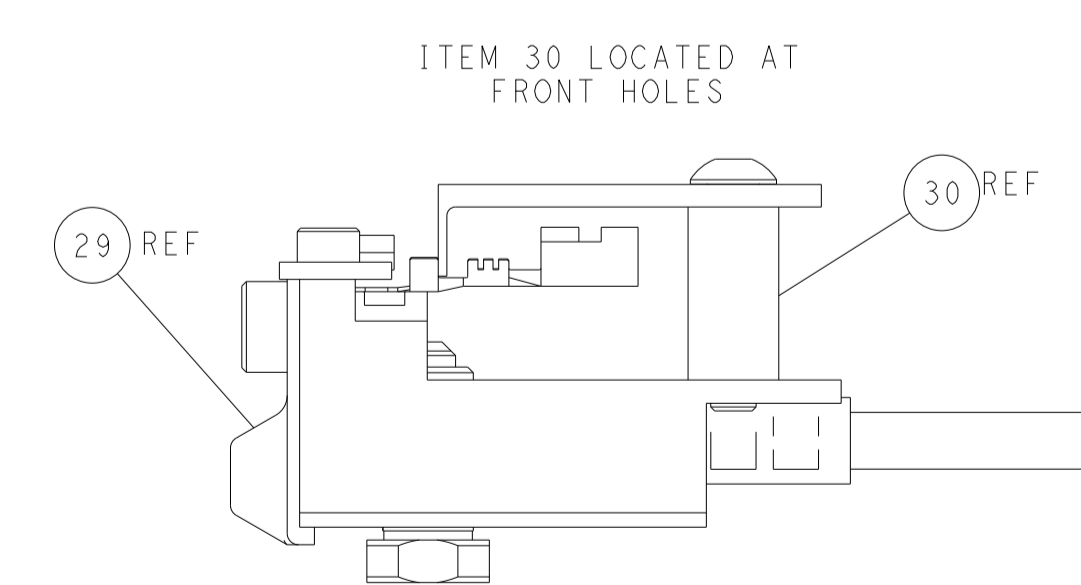
**PACIFIC VERSION**  
 Shown on sheets 3 of 4 & 4 of 4  
 (Atlantic version shown on sheets 1 of 4 & 2 of 4)



TERMINAL SUPPORT LOCATION



RAM AND HOLDDOWN SET-UP



FEED TRACK POSITION  
GUIDE BY INSULATION BARREL

|  |  |   |  |
|--|--|---|--|
| <small>THIS DRAWING IS UNPUBLISHED. RELEASED FOR PUBLICATION. ALL RIGHTS RESERVED. © 2018 BY TYCO ELECTRONICS CORPORATION. THIS DRAWING IS CONTROLLED DOCUMENT. FOR THE LATEST REVISIONS, CONTACT THE ORIGINAL DRAWING ORGANIZATION.</small> |  | DWN<br><b>R. KNEPPER</b><br>15-MAY-18   | TE Connectivity<br>Harrisburg, PA 17105-3608       |
| DIMENSIONS:<br>mm  |  | CHK<br><b>T. BROOKENS</b><br>15-MAY-18  |  |
| TOLERANCES UNLESS OTHERWISE SPECIFIED:<br>0 PLC ±<br>1 PLC ±<br>2 PLC ±<br>3 PLC ±<br>4 PLC ±<br>ANGLES ±<br>FINISH  |  | APVD<br><b>J. DEGRANGE</b><br>15-MAY-18 | NAME<br>Ocean Side Feed<br>Applicator              |
| MATERIAL:  |  | APPLICATION SPEC:                       | SIZE: CAGE CODE: DRAWING NO:<br>A1 00779 ©=2837279 |
| WEIGHT:  |  | RESTRICTED TO:                          | SCALE: 1:2 SHEET 4 OF 4 REV B1                     |