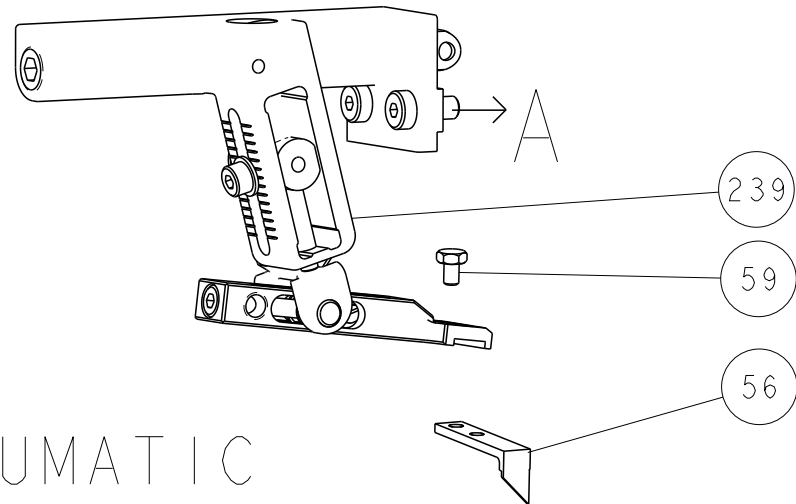


	-	-	-	1	1	-	-	1803515-3	RAM ASSEMBLY, SF ATLANTIC	293
	-	-	-	1	1	-	-	2-1803583-3	APPLICATOR BASIC ASSEMBLY, SF	292
	-	1	-	1	-	1	-	2119641-1	FEED CAM, AIR FEED	248
	-	1	1	1	1	1	1	2119082-5	CAM, SNAIL, INSULATION ADJUSTMENT	244
	-	1	1	1	1	1	1	2079764-1	WASHER, WAVE SPRING, CREST-TO-CREST	243
3	-	1	1	1	1	1	1	2119083-1	RETAINER, INSULATION DIAL	242
	-	1	1	1	1	1	1	7-18023-7	SCR, SKT HD CAP M3 X 4.0	241
	-	-	1	-	1	-	1	2119580-1	MECHANICAL FEED ASSEMBLY	239
	-	1	-	1	-	1	-	2844940-1	AIR FEED MODULE	238
	-	-	-	1	1	-	-	4-1722335-3	STRIPPER, SIDE FEED	182
	-	-	-	1	1	-	-	1-5018030-0	NUT, HEX, REG, RoHS, M3.5	18
3	-	-	-	1	1	-	-	1-1752354-6	STANDOFF, HOLD-DOWN	180
	-	-	-	1	1	-	-	993111-1	PIN, SLOTTED SPRING 3.0 X 20.0	177
	-	-	-	1	1	-	-	5-22280-0	SPRING, COMPRESSION	176
	-	-	-	1	1	-	-	1752353-3	GUIDE PIN, HOLDDOWN	175
	-	-	-	1	1	-	-	1901680-2	GUIDE PIN, HOLDDOWN	174
	-	REF	REF	REF	REF	REF	REF	994970-2	COUNTER, MAGNETIC	164
5	-	1	1	1	1	1	1	2119955-1	ASSY, LUBRICATOR, SIDE FEED	113
	-	1	1	1	1	1	1	2844908-1	SCREW, LOCKING	99
	-	1	1	1	1	1	1	2844907-1	POST, LOCKING	98
	-	1	1	1	1	1	1	455888-6	SPACER, CRIMPER	82
	-	1	1	1	1	1	1	1803607-3	DOCUMENTATION PACKAGE	71
	-	1	1	1	1	1	1	2119740-1	TAG, IDENTIFICATION	67
	-	2	2	2	2	2	2	2168078-1	SCREW, DRIVE, RH, RoHS, 2 x .188	66
	-	1	1	1	1	1	1	2168083-2	SCR, SKT HD CAP, RoHS, M4 X 8.0	60
	-	1	1	1	1	1	1	5-18022-5	SCR, HEX HD CAP, M4 X 6.0	59
	-	1	1	1	1	1	1	1338685-1	PAWL, FEED	56
	-	4	4	4	4	4	4	2168083-3	SCR, SKT HD CAP, RoHS, M4 X 12.0	54
	-	2	2	2	2	2	2	2168083-3	SCR, SKT HD CAP, RoHS, M4 X 12.0	53
	-	1	1	1	1	1	1	5018030-1	NUT, HEX, REG, RoHS, M3	52
	-	1	1	1	1	1	1	811242-5	BUMPER, HOLD DOWN	51
	-	1	1	1	1	1	1	690753-2	SPACER, TONKER	50
	-	1	2	1	2	1	2	18023-9	SCR, SKT HD CAP M4 X 6.0	49
	-	-	1	-	1	-	1	2119652-1	FEED CAM, PRE FEED	48
	-	-	1	-	1	-	1	2119653-1	FEED CAM, POST FEED	47
	-	1	1	-	-	1	1	1803583-9	APPLICATOR BASIC ASSEMBLY, SF	46
	-	1	1	-	-	1	1	1803515-1	RAM ASSEMBLY, SF ATLANTIC	44
	-	1	1	1	1	1	1	1803602-1	SCR, BHSC, RoHS (M8 X 25)	41
	-	1	1	1	1	1	1	1752356-3	SUPPORT, TERMINAL	34
	-	2	2	2	2	2	2	2079383-5	SCR, BHSC, RoHS (M4 X 20)	33
	-	2	2	2	2	2	2	2-2844962-4	SPACER, CYLINDRICAL, STRIP GUIDE	30
	-	1	1	1	1	1	1	2844992-1	ASSEMBLY, STRIP GUIDE	29
	-	1	1	1	1	1	1	1320928-2	STRIP GUIDE	24
	-	1	1	-	-	1	1	2168083-2	SCR, SKT HD CAP, RoHS, M4 X 8.0	21
	-	2	2	1	1	2	2	1-18028-2	WASHER, FLAT, REG M4	20
	-	1	1	-	-	1	1	2119533-1	STRIPPER, SIDE FEED	19
1	-	1	1	1	1	1	1	2119806-1	INSERT, SHEAR	13
	-	1	1	1	1	1	1	3-22280-3	SPRING, COMPRESSION	12
	-	1	1	1	1	1	1	1-18023-1	SCR, SKT HD CAP M4 X 10.0	11
1	-	1	1	1	1	1	1	2119805-1	SHEAR HOLDER, FRONT	10
	-	1	1	1	1	1	1	1803095-6	FLOATING SHEAR, FRONT -	9
1	1	2	2	1	1	1	1	8-1803318-9	ANVIL, COMBINATION	8
	-	1	1	1	1	1	1	3-240641-8	SPACER	7
	-	-	-	-	-	-	-	-	-	6
	-	1	1	1	1	1	1	2119757-5	DEPRESSOR, SHEAR	5
	-	1	1	1	1	1	1	6-238011-3	BLOCK, CRIMPER SPACER	4
1	1	2	2	1	1	1	1	1803709-1	CRIMPER, INSULATION F PREMIUM	3
	-	1	1	1	1	1	1	455888-2	SPACER, CRIMPER	2
1	1	2	2	1	1	1	1	2-568176-5	CRIMPER, WIRE	1

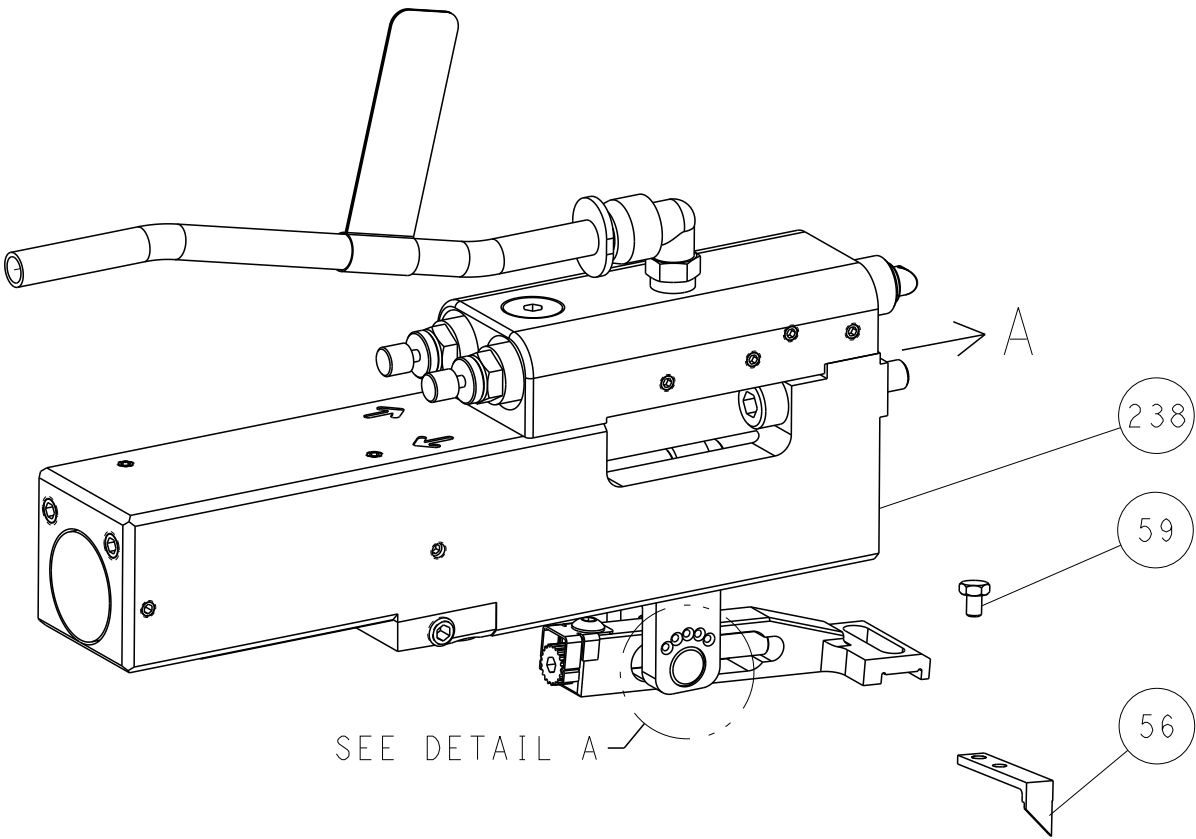
ATLANTIC VERSION  
Shown on sheets 1 of 4 & 2 of 4  
(Pacific version shown on sheets 3 of 4 & 4 of 4)

LOC	DIST	REVISIONS					
		P	LTR	DESCRIPTION	DATE	DWN	APVD
A	66	-	-	SEE SHEET 1	-	-	-

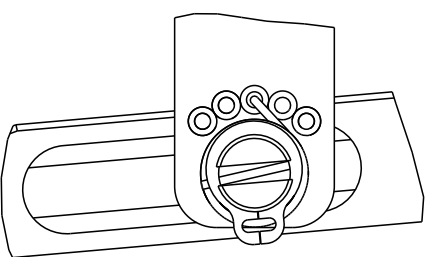
# FEED TYPE MECHANICAL



## PNEUMATIC

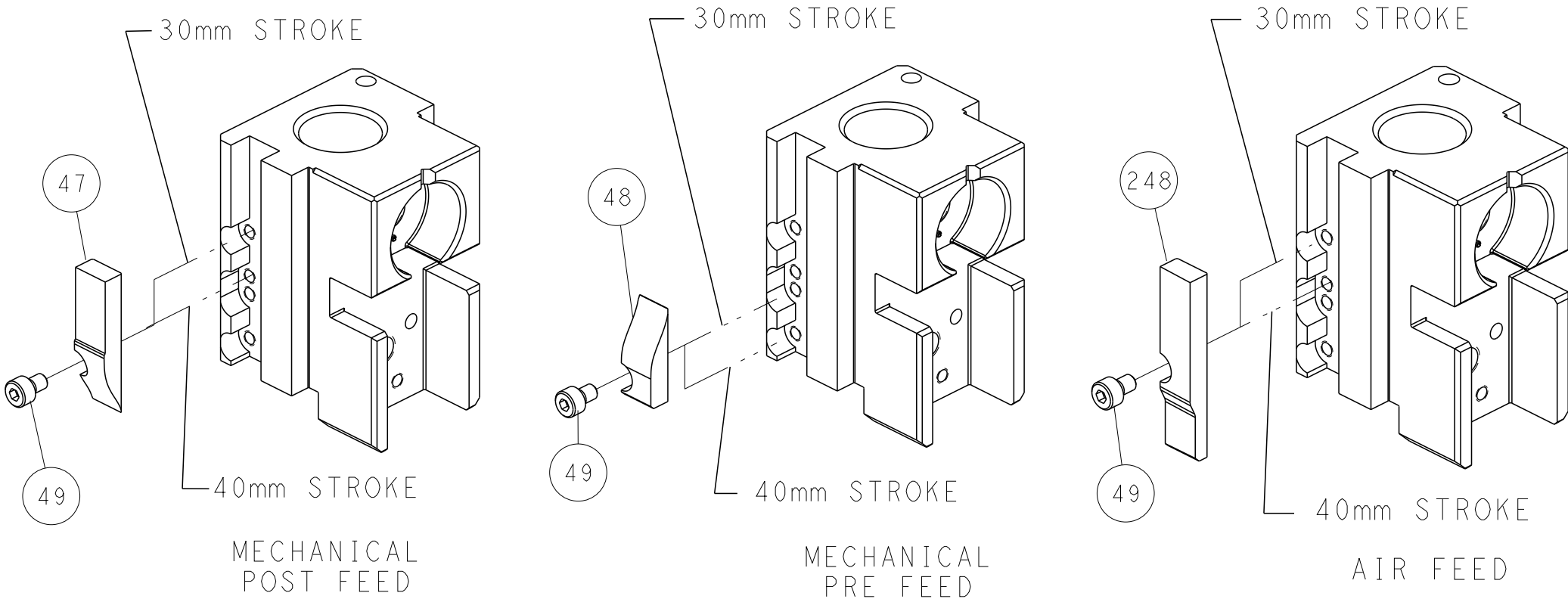


## FEED SPRING SETTING POSITION (SHOWN FROM REAR SIDE)

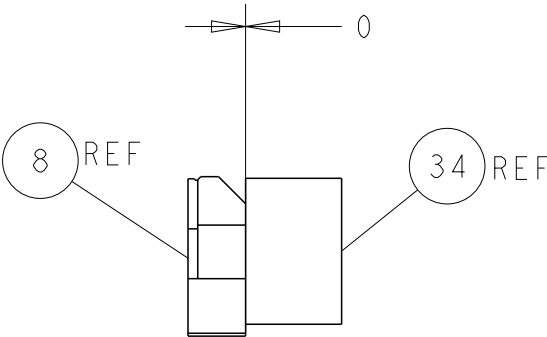


DETAIL A

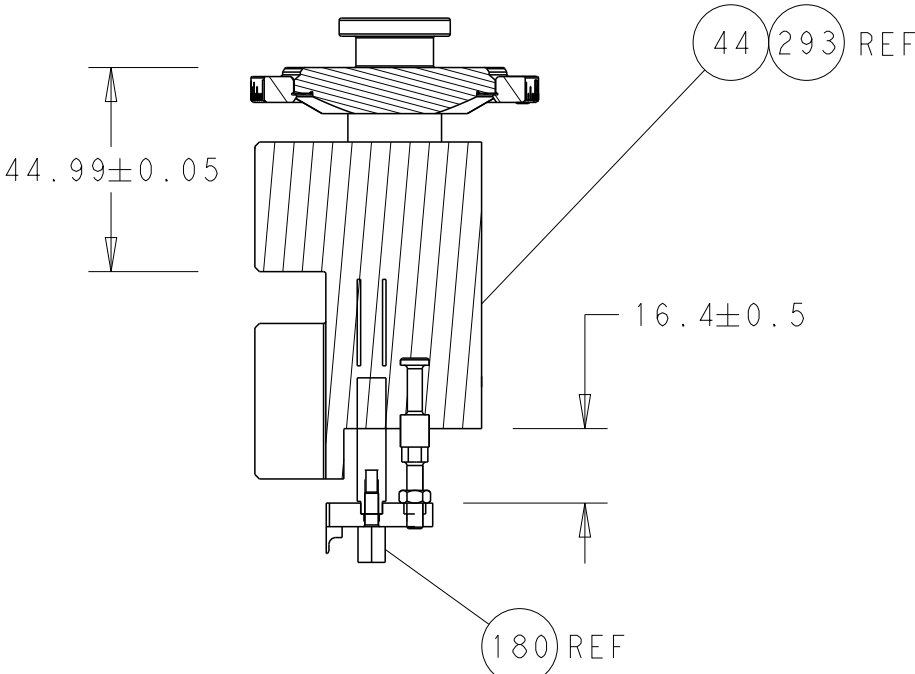
# CAM POSITIONS



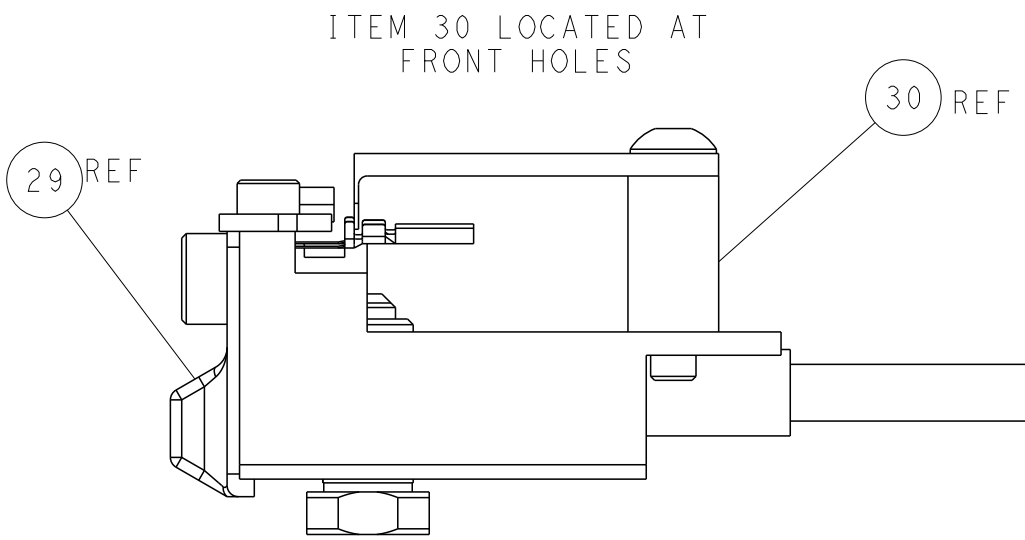
ATLANTIC VERSION  
Shown on sheets 1 of 4 & 2 of 4  
(Pacific version shown on sheets 3 of 4 & 4 of 4)



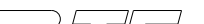
TERMINAL SUPPORT LOCATION



RAM AND HOLDDOWN SET-UP

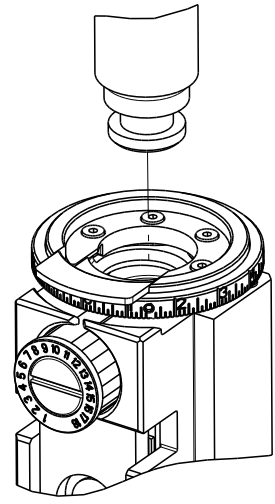


FEED TRACK POSITION  
GUIDE BY INSULATION BARREL

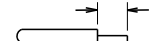


THIS DRAWING IS UNPUBLISHED. IT IS SUBJECT TO CHANGE WITHOUT NOTICE. ANY CHANGES TO THIS DRAWING MUST BE APPROVED BY THE DESIGNING ORGANIZATION. ANY CHANGES TO THIS DRAWING MUST BE APPROVED BY THE DESIGNING ORGANIZATION.		DWN T. BROOKS 04MAR2020	 TE Connectivity Harrisburg, PA 17105-3608		
CHK M. HERR 04MAR2020		APVD T. ELBIN 04MAR2020	NAME Ocean Side Feed Applicator		
DIMENSIONS: mm		TOLERANCES UNLESS OTHERWISE SPECIFIED:		RESTRICTED TO	
0 PLC ±		1 PLC ±			SIZE
2 PLC ±		3 PLC ±			CAGE CODE
4 PLC ±		5 PLC ±			DRAWING NO
6 PLC ±		7 PLC ±			00779
8 PLC ±		9 PLC ±		©=2837262	
10 PLC ±		11 PLC ±		Customer Accessible Production Drawing	
12 PLC ±		13 PLC ±		SCALE 1:2	
14 PLC ±		15 PLC ±		SHEET 2 OF 4	
16 PLC ±		17 PLC ±		REV A	
18 PLC ±		19 PLC ±			
20 PLC ±		21 PLC ±			
22 PLC ±		22 PLC ±			
24 PLC ±		23 PLC ±			
26 PLC ±		24 PLC ±			
28 PLC ±		25 PLC ±			
30 PLC ±		26 PLC ±			
32 PLC ±		27 PLC ±			
34 PLC ±		28 PLC ±			
36 PLC ±		29 PLC ±			
38 PLC ±		30 PLC ±			
40 PLC ±		31 PLC ±			
42 PLC ±		32 PLC ±			
44 PLC ±		33 PLC ±			
46 PLC ±		34 PLC ±			
48 PLC ±		35 PLC ±			
50 PLC ±		36 PLC ±			
52 PLC ±		37 PLC ±			
54 PLC ±		38 PLC ±			
56 PLC ±		39 PLC ±			
58 PLC ±		40 PLC ±			
60 PLC ±		41 PLC ±			
62 PLC ±		42 PLC ±			
64 PLC ±		43 PLC ±			
66 PLC ±		44 PLC ±			
68 PLC ±		45 PLC ±			
70 PLC ±		46 PLC ±			
72 PLC ±		47 PLC ±			
74 PLC ±		48 PLC ±			
76 PLC ±		49 PLC ±			
78 PLC ±		50 PLC ±			
80 PLC ±		51 PLC ±			
82 PLC ±		52 PLC ±			
84 PLC ±		53 PLC ±			
86 PLC ±		54 PLC ±			
88 PLC ±		55 PLC ±			
90 PLC ±		56 PLC ±			
92 PLC ±		57 PLC ±			
94 PLC ±		58 PLC ±			
96 PLC ±		59 PLC ±			
98 PLC ±		60 PLC ±			
100 PLC ±		61 PLC ±			
102 PLC ±		62 PLC ±			
104 PLC ±		63 PLC ±			
106 PLC ±		64 PLC ±			
108 PLC ±		65 PLC ±			
110 PLC ±		66 PLC ±			
112 PLC ±		67 PLC ±			
114 PLC ±		68 PLC ±			
116 PLC ±		69 PLC ±			
118 PLC ±		70 PLC ±			
120 PLC ±		71 PLC ±			
122 PLC ±		72 PLC ±			
124 PLC ±		73 PLC ±			
126 PLC ±		74 PLC ±			
128 PLC ±		75 PLC ±			
130 PLC ±		76 PLC ±			
132 PLC ±		77 PLC ±			
134 PLC ±		78 PLC ±			
136 PLC ±		79 PLC ±			
138 PLC ±		80 PLC ±			
140 PLC ±		81 PLC ±			
142 PLC ±		82 PLC ±			
144 PLC ±		83 PLC ±			
146 PLC ±		84 PLC ±			
148 PLC ±		85 PLC ±			
150 PLC ±		86 PLC ±			
152 PLC ±		87 PLC ±			
154 PLC ±		88 PLC ±			
156 PLC ±		89 PLC ±			
158 PLC ±		90 PLC ±			
160 PLC ±		91 PLC ±			
162 PLC ±		92 PLC ±			
164 PLC ±		93 PLC ±			
166 PLC ±		94 PLC ±			
168 PLC ±		95 PLC ±			
170 PLC ±		96 PLC ±			
172 PLC ±		97 PLC ±			
174 PLC ±		98 PLC ±			
176 PLC ±		99 PLC ±			
178 PLC ±		100 PLC ±			
180 PLC ±		101 PLC ±			
182 PLC ±		102 PLC ±			
184 PLC ±		103 PLC ±			
186 PLC ±		104 PLC ±			
188 PLC ±		105 PLC ±			
190 PLC ±		106 PLC ±			
192 PLC ±		107 PLC ±			
194 PLC ±		108 PLC ±			
196 PLC ±		109 PLC ±			
198 PLC ±		110 PLC ±			
200 PLC ±		111 PLC ±			
202 PLC ±		112 PLC ±			
204 PLC ±		113 PLC ±			
206 PLC ±		114 PLC ±			
208 PLC ±		115 PLC ±			
210 PLC ±		116 PLC ±			
212 PLC ±		117 PLC ±			
214 PLC ±		118 PLC ±			
216 PLC ±		119 PLC ±			
218 PLC ±		120 PLC ±			
220 PLC ±		121 PLC ±			
222 PLC ±		122 PLC ±			
224 PLC ±		123 PLC ±			
226 PLC ±		124 PLC ±			
228 PLC ±		125 PLC ±			
230 PLC ±		126 PLC ±			
232 PLC ±		127 PLC ±			
234 PLC ±		128 PLC ±			
236 PLC ±		129 PLC ±			
238 PLC ±		130 PLC ±			
240 PLC ±		131 PLC ±			
242 PLC ±		132 PLC ±			
244 PLC ±		133 PLC ±			
246 PLC ±		134 PLC ±			
248 PLC ±		135 PLC ±			
250 PLC ±		136 PLC ±			
252 PLC ±		137 PLC ±			
254 PLC ±		138 PLC ±			
256 PLC ±		139 PLC ±			
258 PLC ±		140 PLC ±			
260 PLC ±		141 PLC ±			
262 PLC ±		142 PLC ±			
264 PLC ±		143 PLC ±			
266 PLC ±		144 PLC ±			
268 PLC ±		145 PLC ±			
270 PLC ±		146 PLC ±			
272 PLC ±		147 PLC ±			
274 PLC ±		148 PLC ±			
276 PLC ±		149 PLC ±			
278 PLC ±		150 PLC ±			
280 PLC ±		151 PLC ±			
282 PLC ±		152 PLC ±			
284 PLC ±		153 PLC ±			
286 PLC ±		154 PLC ±			
288 PLC ±		155 PLC ±			
290 PLC ±		156 PLC ±			
292 PLC ±		157 PLC ±			
294 PLC ±		158 PLC ±			
296 PLC ±		159 PLC ±			
298 PLC ±		160 PLC ±			
300 PLC ±		161 PLC ±			
302 PLC ±		162 PLC ±			
304 PLC ±		163 PLC ±			
306 PLC ±		164 PLC ±			
308 PLC ±		165 PLC ±			
310 PLC ±		166 PLC ±			
312 PLC ±		167 PLC ±			
314 PLC ±		168 PLC ±			
316 PLC ±		169 PLC ±			
318 PLC ±		170 PLC ±			
320 PLC ±		171 PLC ±			
322 PLC ±		172 PLC ±			
324 PLC ±		173 PLC ±			
326 PLC ±		174 PLC ±			
328 PLC ±		175 PLC ±			
330 PLC ±		176 PLC ±			
332 PLC ±		177 PLC ±			
334 PLC ±		178 PLC ±			
336 PLC ±		179 PLC ±			
338 PLC ±		180 PLC ±			
340 PLC ±		181 PLC ±			
342 PLC ±		182 PLC ±			
344 PLC ±		183 PLC ±			
346 PLC ±		184 PLC ±			
348 PLC ±		185 PLC ±			
350 PLC ±		186 PLC ±			
352 PLC ±		187 PLC ±			
354 PLC ±		188 PLC ±			
356 PLC ±		189 PLC ±			
358 PLC ±		190 PLC ±			
360 PLC ±		191 PLC ±			
362 PLC ±		192 PLC ±			
364 PLC ±		193 PLC ±			
366 PLC ±		194 PLC ±			
368 PLC ±		195 PLC ±			
370 PLC ±		196 PLC ±			
372 PLC ±		197 PLC ±			
374 PLC ±		198 PLC ±			
376 PLC ±		199 PLC ±			
378 PLC ±		200 PLC ±			
380 PLC ±		201 PLC ±			
382 PLC ±		202 PLC ±			
384 PLC ±		203 PLC ±			
386 PLC ±		204 PLC ±			
388 PLC ±		205 PLC ±			
390 PLC ±		206 PLC ±			
392 PLC ±		207 PLC ±			
394 PLC ±		208 PLC ±			
396 PLC ±		209 PLC ±			
398 PLC ±		210 PLC ±			
400 PLC ±		211 PLC ±			
402 PLC ±		212 PLC ±			
404 PLC ±		213 PLC ±			
406 PLC ±		214 PLC ±			
408 PLC ±		215 PLC ±			
410 PLC ±		216 PLC ±			
412 PLC ±		217 PLC ±			
414 PLC ±		218 PLC ±			
416 PLC ±		219 PLC ±			
418 PLC ±		220 PLC ±			
420 PLC ±		221 PLC ±			
422 PLC ±		222 PLC ±			
424 PLC ±		223 PLC ±			
426 PLC ±		224 PLC ±			
428 PLC ±		225 PLC ±			
430 PLC ±		226 PLC ±			
432 PLC ±		227 PLC ±			
434 PLC ±		228 PLC ±			
436 PLC ±		229 PLC ±			
438 PLC ±		230 PLC ±			
440 PLC ±		231 PLC ±			
442 PLC ±		232 PLC ±			
444 PLC ±		233 PLC ±			
446 PLC ±		234 PLC ±			
448 PLC ±		235 PLC ±			
450 PLC ±		236 PLC ±			
452 PLC ±		237 PLC ±			
454 PLC ±		238 PLC ±			
456 PLC ±		239 PLC ±			
458 PLC ±		240 PLC ±			
460 PLC ±		241 PLC ±			
462 PLC ±		242 PLC ±			
464 PLC ±		243 PLC ±			
466 PLC ±		244 PLC ±			
468 PLC ±		245 PLC ±			
470 PLC ±		246 PLC ±			
472 PLC ±		247 PLC ±			
474 PLC ±		248 PLC ±			
476 PLC ±		249 PLC ±			
478 PLC ±		250 PLC ±			
480 PLC ±		251 PLC ±			
482 PLC ±		252 PLC ±			
484 PLC ±		253 PLC ±			
486 PLC ±		254 PLC ±			
488 PLC ±		255 PLC ±			
490 PLC ±		256 PLC ±			
492 PLC ±		257 PLC ±			
494 PLC ±		258 PLC ±			
496 PLC ±		259 PLC ±			
498 PLC ±		260 PLC ±			
500 PLC ±		261 PLC ±			
502 PLC ±		262 PLC ±			
504 PLC ±		263 PLC ±			
506 PLC ±		264 PLC ±			
508 PLC ±		265 PLC ±			
510 PLC ±		266 PLC ±			
512 PLC ±		267 PLC ±			
514 PLC ±		268 PLC ±			
516 PLC ±		269 PLC ±			
518 PLC ±		270 PLC ±			
520 PLC ±		271 PLC ±			
522 PLC ±		272 PLC ±			
524 PLC ±		273 PLC ±			
526 PLC ±		274 PLC ±			
528 PLC ±		275 PLC ±			
530 PLC ±		276 PLC ±			
532 PLC ±		277 PLC ±			
534 PLC ±		278 PLC ±			
536 PLC ±		279 PLC ±			
538 PLC ±		280 PLC ±			
540 PLC ±		281 PLC ±			
542 PLC ±		282 PLC ±			
544 PLC ±		283 PLC ±			
546 PLC ±		284 PLC ±			
548 PLC ±		285 PLC ±			
550 PLC ±		286 PLC ±			
552 PLC ±		287 PLC ±			
554 PLC ±		288 PLC ±			
556 PLC ±		289 PLC ±			
558 PLC ±		290 PLC ±			
560 PLC ±		291 PLC ±			
562 PLC ±		292 PLC ±			
564 PLC ±		293 PLC ±			
566 PLC ±		294 PLC ±			
568 PLC ±		295 PLC ±			
570 PLC ±		296 PLC ±			
572 PLC ±		297 PLC ±			
574 PLC ±		298 PLC ±			
576 PLC ±		299 PLC ±			
578 PLC ±		300 PLC ±			
580 PLC ±		301 PLC ±			
582 PLC ±		302 PLC ±			
584 PLC ±		303 PLC ±			
586 PLC ±		304 PLC ±			
588 PLC ±		305 PLC ±			
590 PLC ±		306 PLC ±			
592 PLC ±		307 PLC ±			
594 PLC ±		308 PLC ±			
596 PLC ±		309 PLC ±			
598 PLC ±		310 PLC ±			
600 PLC ±		311 PLC ±			
602 PLC ±		312 PLC ±			
604 PLC ±		313 PLC ±			
606 PLC ±		314 PLC ±			
608 PLC ±		315 PLC ±			
610 PLC ±		316 PLC ±			
612 PLC ±		317 PLC ±			
614 PLC ±		318 PLC ±			
616 PLC ±		319 PLC ±			
618 PLC ±		320 PLC ±			
620 PLC ±		321 PLC ±			
622 PLC ±		322 PLC ±			
624 PLC ±		323 PLC ±			
626 PLC ±		324 PLC ±			
628 PLC ±		325 PLC ±			
630 PLC ±		326 PLC ±			
632 PLC ±		327 PLC ±			
634 PLC ±		328 PLC ±			
636 PLC ±		329 PLC ±			
638 PLC ±		330 PLC ±			
640 PLC ±		331 PLC ±			
642 PLC ±		332 PLC ±			
644 PLC ±		333 PLC ±			
646 PLC ±		334 PLC ±			
648 PLC ±		335 PLC ±			
650 PLC ±		336 PLC ±			
652 PLC ±		337 PLC ±			
654 PLC ±		338 PLC ±			
656 PLC ±		339 PLC ±			
658 PLC ±		340 PLC ±			
660 PLC ±		341 PLC ±			
662 PLC ±		342 PLC ±			
664 PLC ±		343 PLC ±			
666 PLC ±		344 PLC ±			
668 PLC ±		345 PLC ±			
670 PLC ±		346 PLC ±			
672 PLC ±		347 PLC ±			
674 PLC ±		348 PLC ±			
676 PLC ±		349 PLC ±			
678 PLC ±		350 PLC ±			
680 PLC ±		351 PLC ±			
682 PLC ±		352 PLC ±			
684 PLC ±		353 PLC ±			
686 PLC ±		354 PLC ±			
688 PLC ±		355 PLC ±			
690 PLC ±		356 PLC ±			
692 PLC ±		357 PLC ±			
694 PLC ±		358 PLC ±			
696 PLC ±		359 PLC ±			
698 PLC ±		360 PLC ±			
700 PLC ±		361 PLC ±			
702 PLC ±		362 PLC ±			
704 PLC ±		363 PLC ±			
706 PLC ±		364 PLC ±			
708 PLC ±		365 PLC ±			
710 PLC ±		366 PLC ±			
712 PLC ±		367 PLC ±			
714 PLC ±		368 PLC ±			
716 PLC ±		369 PLC ±			
718 PLC ±		3			

8		7	
THIS DRAWING IS UNPUBLISHED.		RELEASED FOR PUBLICATION	
20		20	
COPYRIGHT 20		BY TYCO ELECTRONICS CORPORATION. ALL RIGHTS RESERVED.	
PART NUMBER	REVISION	DESCRIPTION	FEED TYPE
2-2837262-1	A	FINE CRIMP HEIGHT ADJUST	MECHANICAL
2-2837262-2	A	FINE CRIMP HEIGHT ADJUST	PNEUMATIC
7-2837262-7	A	CRIMP TOOLING KIT	-

PACIFIC VERSION TERMINATOR  
INTERFACE ADAPTER



APPLICATOR DATA		
CRIMP	SIZE	TYPE
WIRE	1.27 mm [.050]	F
INSUL	2.03 mm [.080]	F
APPLICATOR INSTRUCTIONS 408-35042		

TERMINAL DATA: WURTH TERMINAL		TE CRIMP SPECIFICATION	
TERMINAL NAME: TERMINAL			
WIRE STRIP LENGTH			TERMINAL INSULATION DIAMETER RANGE
2.38-3.14 mm [.094-.124 IN]			Ø1.00-2.10 mm [.039-.083 IN]
TERMINAL APPLICATION 		NONE	-
SPECIFICATION		-	-
TERMINALS APPLIED 			
TE TERMINAL	WURTH TERMINAL	TE TERMINAL	WURTH TERMINAL
3311101-1	66200313722		

WIRE SIZE	CRIMP HEIGHT mm [INCH]	CRIMP HEIGHT REFERENCE SETTING
20 AWG	0.82+/-0.05 [.032+/-0.002]	5.8
22 AWG	0.70+/-0.05 [.028+/-0.002]	6.4
24 AWG	0.64+/-0.05 [.025+/-0.002]	7.0



1. RECOMMENDED SPARE PARTS
2. REFER TO SUPPLIED INSTRUCTION SHEET FOR CLEANING, LUBRICATION AND STORAGE OF APPLICATOR.
3. APPLY PART NUMBER 2-23419-6 LOCTITE TO THREADS OF ITEM 242.
4. CRIMP HEIGHT REFERENCE SETTING WAS THE SETTING USED WHEN THE APPLICATOR WAS QUALIFIED AT THE FACTORY. ADJUSTMENT MAY BE NECESSARY WHEN RUNNING APPLICATOR IN THE FIELD.
5. TERMINAL LUBRICANT IS RECOMMENDED.
6. UNLESS SPECIFIED OTHERWISE TORQUE VALUES SHALL BE USED PER DOCUMENT, 101-35000.

\*WARNING  
ON INSTALLATION, SET WIRE DISC TO CRIMP HEIGHT REFERENCE SETTING FOR LARGEST WIRE SIZE. CRIMP HEIGHT REFERENCE SETTINGS GREATER THAN THE VALUE SHOWN MAY CAUSE DAMAGE TO THE CRIMP TOOLING. REFER TO THE INSTRUCTION SHEET FOR PROPER SETUP AND ADJUSTMENTS.

PACIFIC VERSION  
Shown on sheets 3 of 4 & 4 of 4  
(Atlantic version shown on sheets 1 of 4 & 2 of 4)

2		1					
LOC	DIST	REVISIONS					
A	66	P	LTR	DESCRIPTION	DATE	DWN	APVD
		-		SEE SHEET 1	-	-	-

-	1	1	2119082-5	CAM, SNAIL, INSULATION ADJUSTMENT	244
-	1	1	2079764-1	WASHER, WAVE SPRING, CREST-TO-CREST	243
3	-	1	2119083-1	RETAINER, INSULATION DIAL	242
-	1	1	7-18023-7	SCR, SKT HD CAP M3 X 4.0	241
-	-	1	2119580-1	MECHANICAL FEED ASSEMBLY	239
-	1	-	2844940-1	AIR FEED MODULE	238
-	REF	REF	994970-2	COUNTER, MAGNETIC	164
-	1	-	2119641-2	FEED CAM, AIR FEED	151
-	1	1	2168083-8	SCR, SKT HD CAP, RoHS, M4 X 16	144
-	4	4	2168083-9	SCR, SKT HD CAP, RoHS, M4 X 20	143
-	-	1	2119653-2	FEED CAM, POST FEED	142
-	1	1	1-1803583-0	APPLICATOR BASIC ASSEMBLY, SF	141
-	1	1	1803516-1	RAM ASSEMBLY, SF PACIFIC	140
5	-	1	2119955-1	ASSY, LUBRICATOR, SIDE FEED	113
-	1	1	2844908-1	SCREW, LOCKING	99
-	1	1	2844907-1	POST, LOCKING	98
-	1	1	455888-6	SPACER, CRIMPER	82
-	1	1	1803607-3	DOCUMENTATION PACKAGE	71
-	1	1	2119740-1	TAG, IDENTIFICATION	67
-	2	2	2168078-1	SCREW, DRIVE, RH, RoHS, 2 x .188	66
-	1	1	5-18022-5	SCR, HEX HD CAP, M4 X 6.0	59
-	1	1	1338685-1	PAWL, FEED	56
-	2	2	2168083-3	SCR, SKT HD CAP, RoHS, M4 X 12.0	53
-	1	1	5018030-1	NUT, HEX, REG, RoHS, M3	52
-	1	1	811242-5	BUMPER, HOLD DOWN	51
-	1	1	690753-2	SPACER, TONKER	50
-	1	2	18023-9	SCR, SKT HD CAP M4 X 6.0	49
-	-	1	2119652-1	FEED CAM, PRE FEED	48
-	1	1	1803602-1	SCR, BHSC, RoHS (M8 X 25)	41
-	1	1	1752356-3	SUPPORT, TERMINAL	34
-	2	2	2079383-5	SCR, BHSC, RoHS (M4 X 20)	33
-	2	2	2-2844962-4	SPACER, CYLINDRICAL, STRIP GUIDE	30
-	1	1	2844992-1	ASSEMBLY, STRIP GUIDE	29
-	1	1	1320928-2	STRIP GUIDE	24
-	1	1	2168083-2	SCR, SKT HD CAP, RoHS, M4 X 8.0	21
-	2	2	1-18028-2	WASHER, FLAT, REG M4	20
-	1	1	2119533-1	STRIPPER, SIDE FEED	19
1	-	1	2119806-1	INSERT, SHEAR	13
-	1	1	3-22280-3	SPRING, COMPRESSION	12
-	1	1	1-18023-1	SCR, SKT HD CAP M4 X 10.0	11
1	-	1	2119805-1	SHEAR HOLDER, FRONT	10
1	-	1	1803095-6	FLOATING SHEAR, FRONT -	9
1	1	1	8-1803318-9	ANVIL, COMBINATION	8
-	1	1	3-240641-8	SPACER	7
-	-	-	-	-	6
-	1	1	2119757-5	DEPRESSOR, SHEAR	5
-	1	1	6-238011-3	BLOCK, CRIMPER SPACER	4
1	1	1	1803709-1	CRIMPER, INSULATION F PREMIUM	3
-	1	1	455888-2	SPACER, CRIMPER	2
1	1	1	2-568176-5	CRIMPER, WIRE	1

THIS DRAWING IS UNPUBLISHED. IT IS SUBJECT TO CHANGE WITHOUT NOTICE. ANY REVISIONS TO THIS DRAWING SHOULD BE CONTACTED FOR THE LATEST REVISION.		DWN T. BROOKENS CHK M. HERR APVD T. ELBIN	04MAR2020 04MAR2020 04MAR2020	STE TE Connectivity Harrisburg, PA 17105-3608	
DIMENSIONS: mm		TOLERANCES UNLESS OTHERWISE SPECIFIED:		NAME Ocean Side Feed Applicator	
0 PLC 1 PLC 2 PLC 3 PLC 4 PLC ANGLES FINISH		± ± ± ± ± ± ±		PRODUCT SPEC APPLICATION SPEC	
MATERIAL		WEIGHT		SIZE CAGE CODE DRAWING NO RESTRICTED TO	
-		-		A1 00779 C=2837262	
Customer Accessible Production Drawing		SCALE 1:2		SHEET 3 OF 4	
				REV A	

SHEETS 1 & 2 ARE NOT REQUIRED FOR PACIFIC VERSION

LOC		DIST		REVISIONS			
A	66	P	LYR	DESCRIPTION	DATE	DWN	APVD
		-		SEE SHEET 1	-	-	-

D

C

B

A

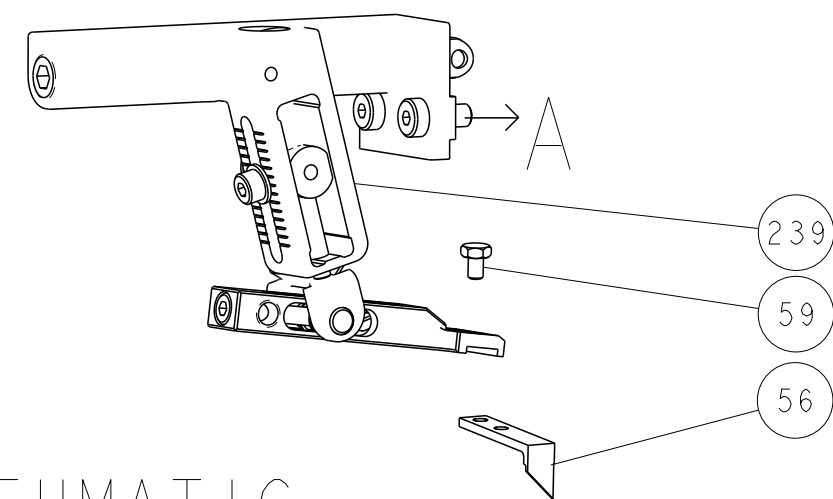
D

C

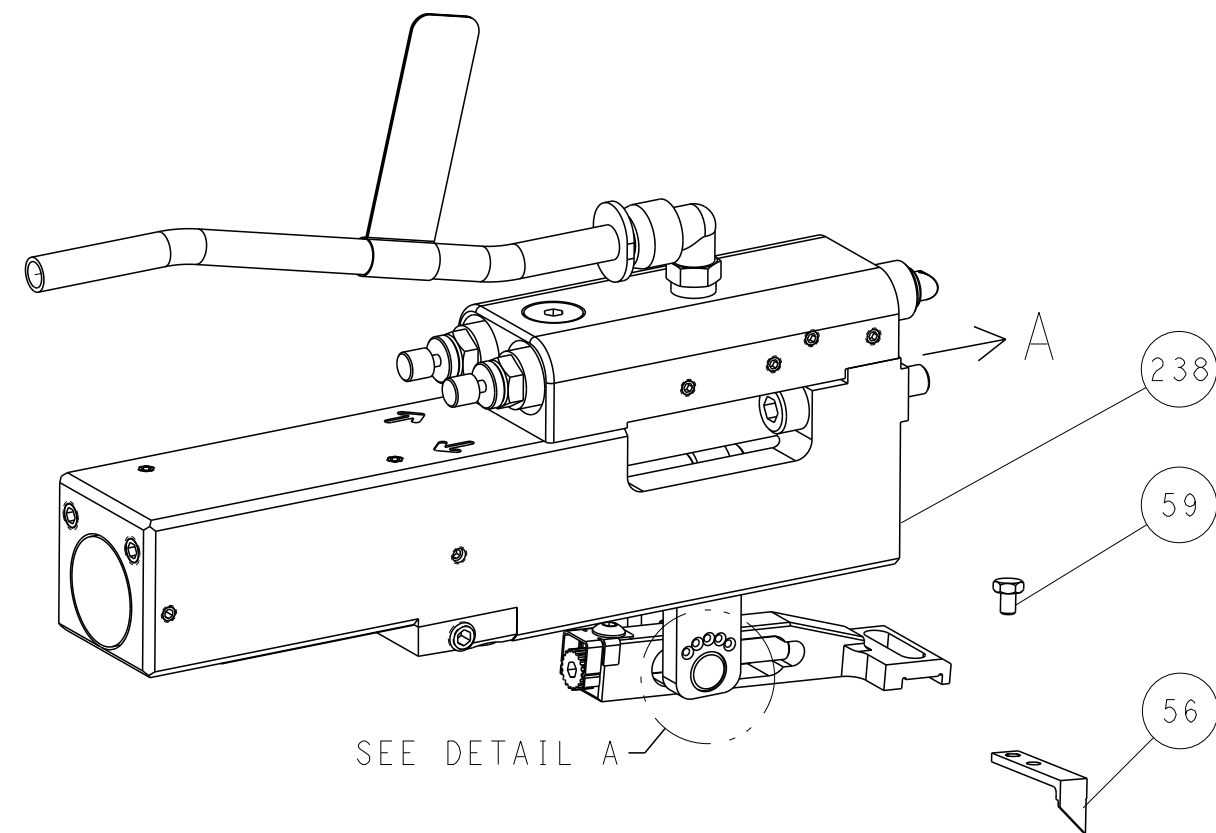
B

A

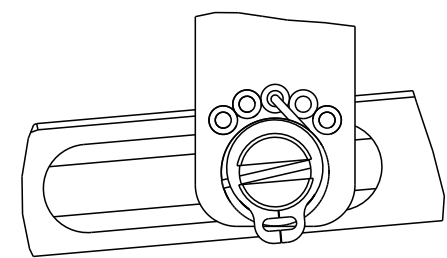
# FEED TYPE MECHANICAL



# PNEUMATIC

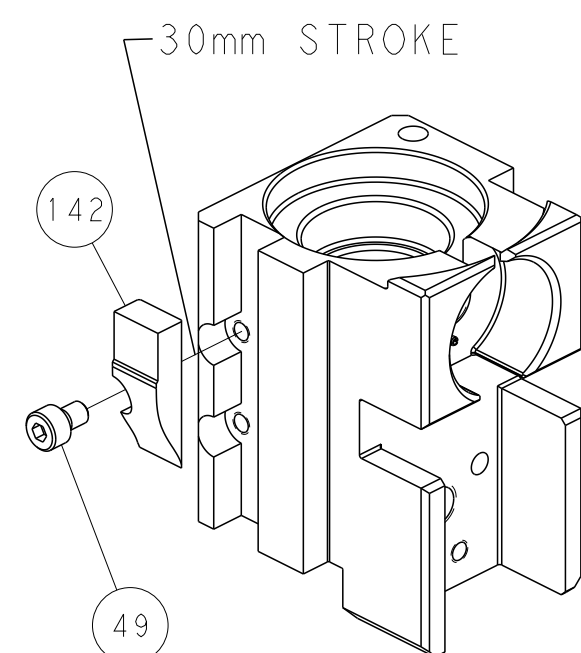


FEED SPRING SETTING POSITION  
(SHOWN FROM REAR SIDE)

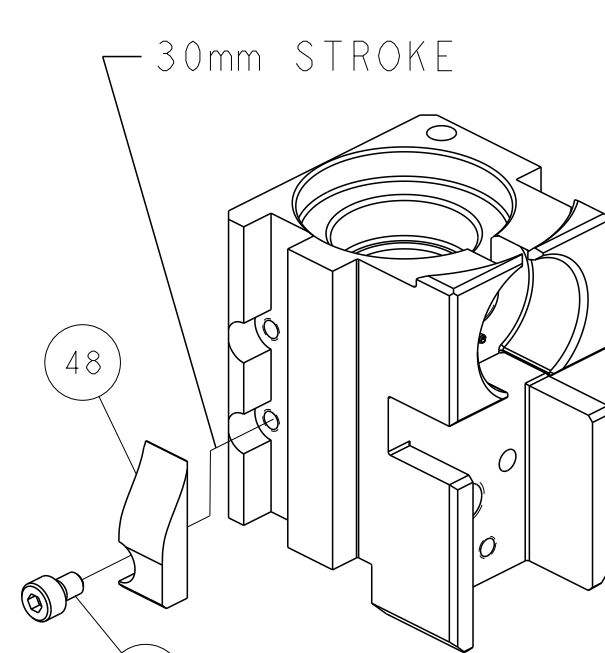


DETAIL A

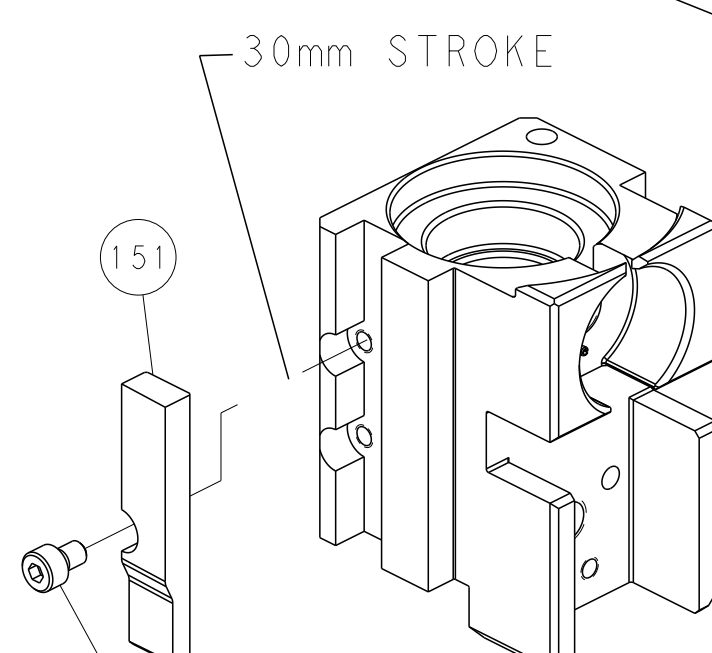
# CAM POSITIONS



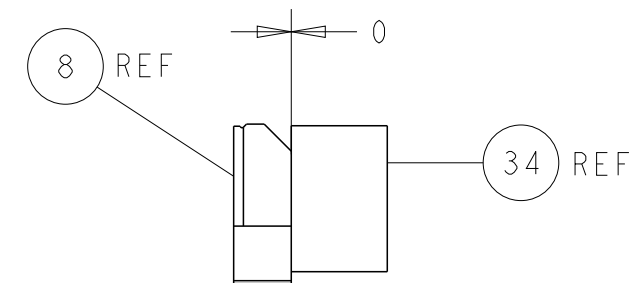
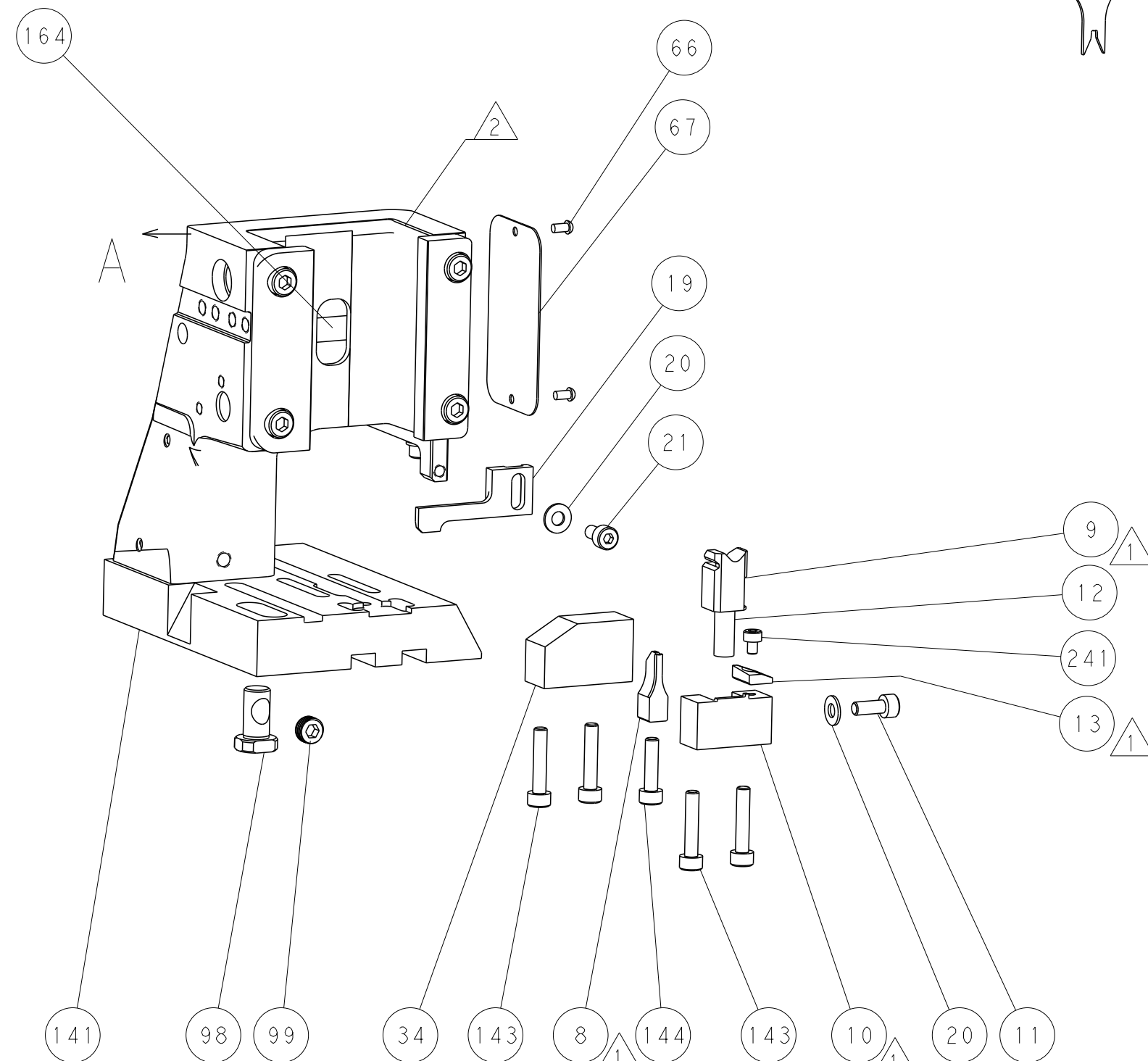
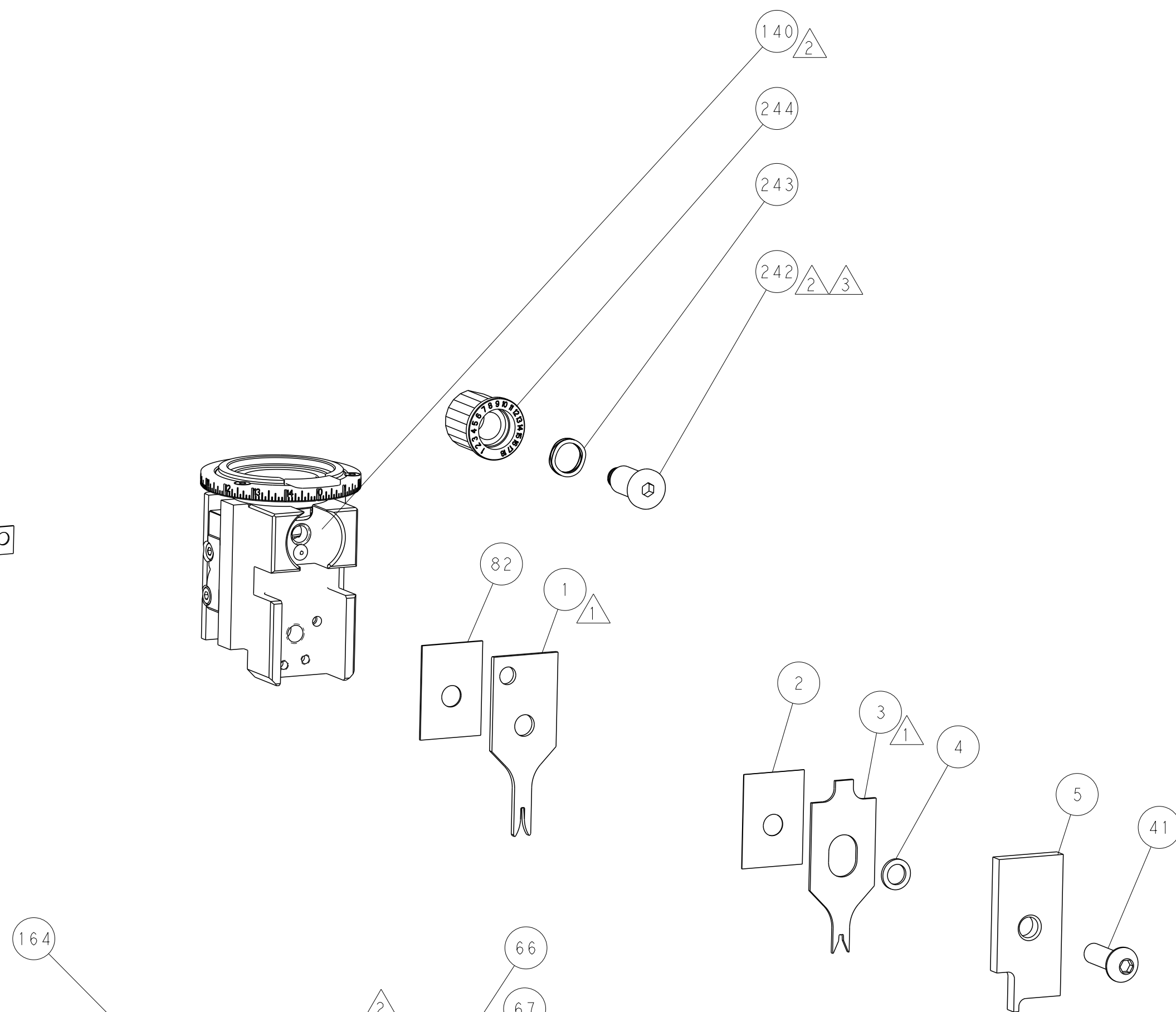
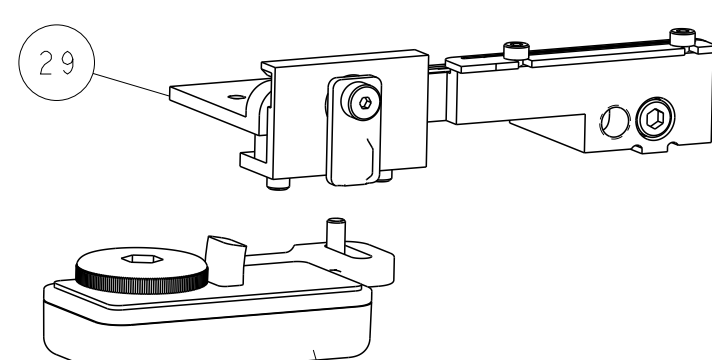
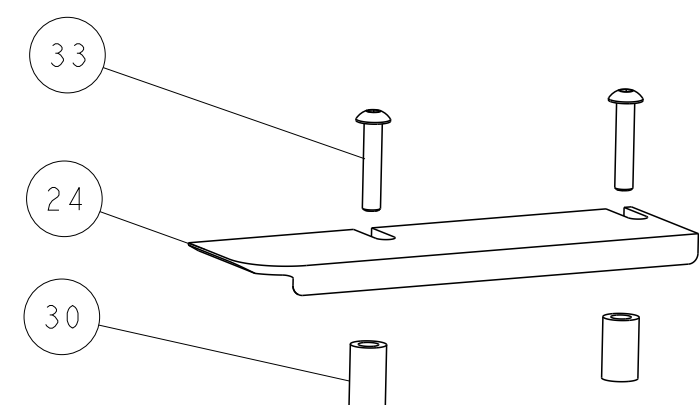
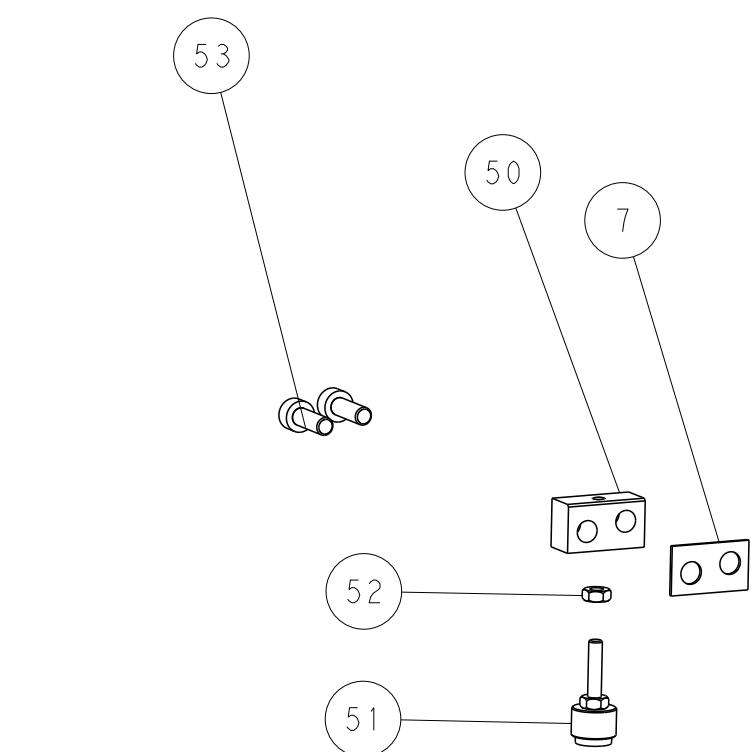
MECHANICAL  
POST FEED



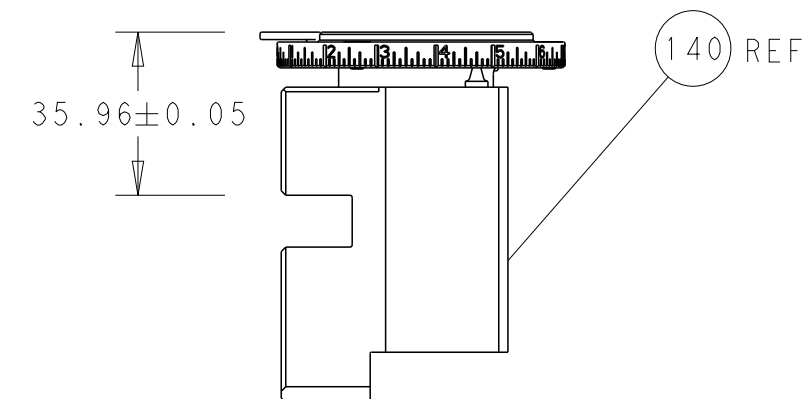
MECHANICAL  
PRE FEED



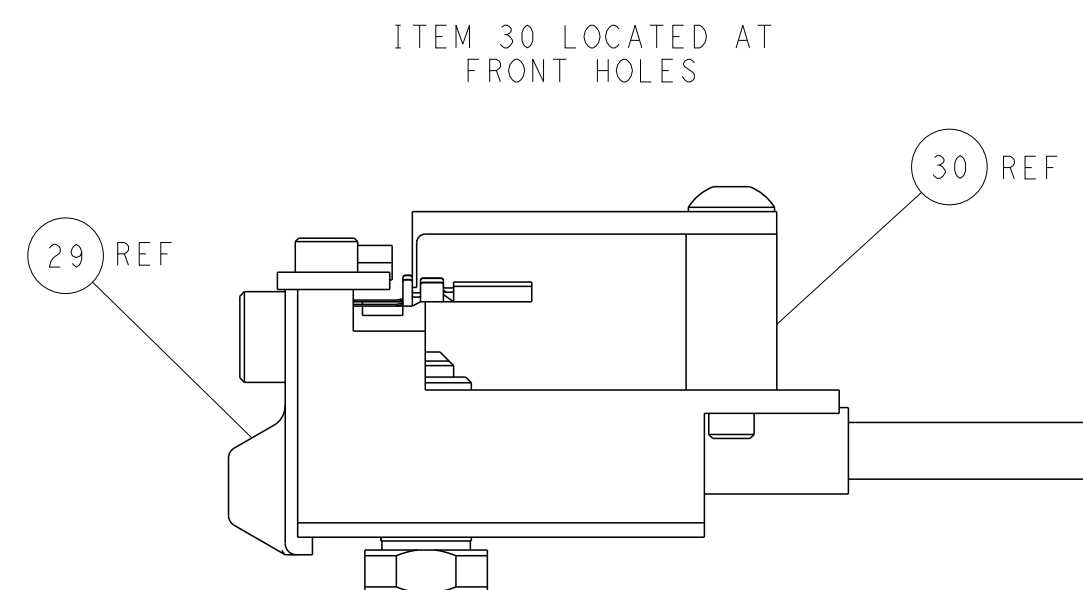
AIR FEED



TERMINAL SUPPORT LOCATION




RAM SET-UP



ITEM 30 LOCATED AT  
FRONT HOLES

FEED TRACK POSITION  
GUIDE BY INSULATION BARREL

PACIFIC VERSION  
Shown on sheets 3 of 4 & 4 of 4  
(Atlantic version shown on sheets 1 of 4 & 2 of 4)

THIS DRAWING IS UNPUBLISHED. IT IS THE PROPERTY OF TYCO ELECTRONICS CORPORATION. IT IS SUBJECT TO CHANGE WITHOUT NOTICE. NO PART OF THIS DRAWING IS TO BE REPRODUCED OR TRANSMITTED IN ANY FORM OR BY ANY MEANS, ELECTRONIC OR MECHANICAL, INCLUDING PHOTOCOPYING, RECORDING, OR BY ANY INFORMATION STORAGE AND RETRIEVAL SYSTEM. WITHOUT THE WRITTEN PERMISSION OF TYCO ELECTRONICS CORPORATION. SHOULD BE CONTACTED FOR THE LATEST EDITION.				DWN T. BROOKS 04MAR2020	 TE Connectivity Harrisburg, PA 17105-3608						
CHK M. HERR 04MAR2020				APVD T. ELBIN 04MAR2020							
DIMENSIONS: mm				TOLERANCES UNLESS OTHERWISE SPECIFIED: 0 PLC ±.005 1 PLC ±.005 2 PLC ±.005 3 PLC ±.005 4 PLC ±.005 ANGLES ±.005 FINISH							
MATERIAL -				WEIGHT -							
Customer Accessible Production Drawing				SCALE 1:2							
SHEET 4				OF 4							
REV A											

SHEETS 1 & 2 ARE NOT REQUIRED FOR PACIFIC VERSION