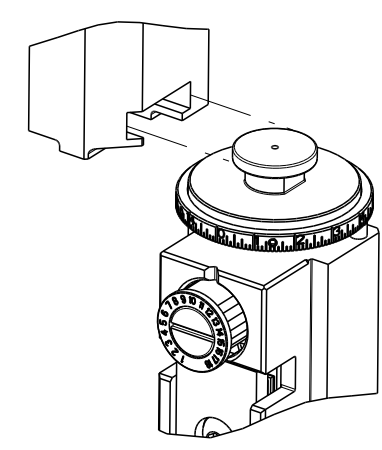


| PART NUMBER | REVISION | DESCRIPTION                            | FEED TYPE  |
|-------------|----------|--|------------|
| 2837241-1   | A        | FINE CRIMP HEIGHT ADJUST               | MECHANICAL |
| 2837241-2   | A        | FINE CRIMP HEIGHT ADJUST               | PNEUMATIC  |
| 5-2837241-1 | A        | SEAL STRIPPER CRIMPER TERMINATING UNIT | MECHANICAL |
| 5-2837241-2 | A        | SEAL STRIPPER CRIMPER TERMINATING UNIT | PNEUMATIC  |
| 7-2837241-1 | A        | MECHANICAL AND CRIMP TOOLING KIT       | MECHANICAL |
| 7-2837241-2 | A        | PNEUMATIC AND CRIMP TOOLING KIT        | PNEUMATIC  |
| 7-2837241-7 | A        | CRIMP TOOLING KIT                      | -          |

ATLANTIC VERSION TERMINATOR INTERFACE ADAPTER



APPLICATOR DATA

| CRIMP | SIZE           | TYPE |
|-------|----------------|------|
| WIRE  | 2.18 mm [.086] | F    |
| INSUL | 3.43 mm [.135] | O    |

APPLICATOR INSTRUCTIONS  
408-35042

TERMINAL DATA: LEAR TERMINAL LEAR CRIMP SPECIFICATION

TERMINAL NAME: 1.6mm CONTACT, RECEPTACLE, SEALED

| WIRE STRIP LENGTH           | TERMINAL INSULATION DIAMETER RANGE |
|-----------------------------|------------------------------------|
| 3.90-4.70 mm [.154-.185 IN] | Ø1.70-2.50 mm [.067-.098 IN]       |

TERMINAL APPLICATION SPECIFICATION LEAR SPEC

AT9106

TERMINALS APPLIED

| TE TERMINAL | LEAR TERMINAL | TE SEAL   | LEAR SEAL     | SEAL INSULATION DIAMETER RANGE |
|-------------|---------------|-----------|---------------|--------------------------------|
| 1949227-1   | 26037.201.179 | 1949110-1 | 14448.627.621 | 1.7-2.1                        |
| 2113225-1   | 26039.201.179 | 1949230-1 | 14458.627.610 | 1.9-2.5                        |

| WIRE SIZE | CRIMP HEIGHT mm [INCH]        | CRIMP HEIGHT REFERENCE SETTING |
|-----------|-------------------------------|--------------------------------|
| 1.50mm2   | 1.40 +/- 0.05 [.055 +/- .002] | 7.3                            |
| 1.00mm2   | 1.30 +/- 0.05 [.051 +/- .002] | 8.3                            |
| 0.75mm2   | 1.20 +/- 0.05 [.047 +/- .002] | 9.4                            |

- RECOMMENDED SPARE PARTS
- REFER TO SUPPLIED INSTRUCTION SHEET FOR CLEANING, LUBRICATION AND STORAGE OF APPLICATOR.
- APPLY PART NUMBER 2-23419-6 LOCTITE TO THREADS OF ITEM 242.
- CRIMP HEIGHT REFERENCE SETTING WAS THE SETTING USED WHEN THE APPLICATOR WAS QUALIFIED AT THE FACTORY. ADJUSTMENT MAY BE NECESSARY WHEN RUNNING APPLICATOR IN THE FIELD.
- UNLESS SPECIFIED OTHERWISE TORQUE VALUES SHALL BE USED PER DOCUMENT 101-35000.
- APPLY TORQ-SEAL IN ALLEN SOCKET TO FILL HOLE AFTER FLAT HD HAS BEEN ADJUSTED TO CORRECT HEIGHT AT QUALIFICATION. APPLY #1-23419-5 LOC-TITE TO THREADS.

**\*WARNING**  
 ON INSTALLATION, SET WIRE DISC TO CRIMP HEIGHT REFERENCE SETTING FOR LARGEST WIRE SIZE. CRIMP HEIGHT REFERENCE SETTINGS GREATER THAN THE VALUE SHOWN MAY CAUSE DAMAGE TO THE CRIMP TOOLING, REFER TO THE INSTRUCTION SHEET FOR PROPER SETUP AND ADJUSTMENTS.

ATLANTIC VERSION  
 Shown on sheets 1 of 4 & 2 of 4  
 (Pacific version shown on sheets 3 of 4 & 4 of 4)

| LOC | DIST | REV | DATE      | BY | APPV |
|-----|------|-----|-----------|----|------|
| A   | 66   | A   | 28FEB2023 | TB | TE   |

| REV | DATE                    | DESCRIPTION | DATE                                | BY | APPV |
|-----|-------------------------|-------------|-------------------------------------|----|------|
| -   | 1 1 1 1 1 1             | 1803945-4   | TONKER                              |    | 300  |
| -   | 1 1 1 1 1 1             | 22278-9     | SPRING, COMPRESSION                 |    | 299  |
| -   | 2 2 2 2 2 2             | 4-18032-3   | SCR, SET, FLT PNT, M3 X 6.0         |    | 298  |
| -   | 1 1 1 1 1 1             | 1803944-1   | SPACER, TONKER                      |    | 297  |
| -   | - - - 1 1 - -           | 2-1803583-1 | APPLICATOR BASIC ASSEMBLY, SF       |    | 292  |
| -   | 1 - 1 - 1 - -           | 2119641-1   | FEED CAM, AIR FEED                  |    | 248  |
| -   | 1 1 1 1 1 1             | 2119082-2   | CAM, SNAIL, INSULATION ADJUSTMENT   |    | 244  |
| -   | 1 1 1 1 1 1             | 2079764-1   | WASHER, WAVE SPRING, CREST-TO-CREST |    | 243  |
| -   | 1 1 1 1 1 1             | 2119083-1   | RETAINER, INSULATION DIAL           |    | 242  |
| -   | 1 1 1 1 1 1             | 7-18023-7   | SCR, SKT HD CAP M3 X 4.0            |    | 241  |
| -   | - 1 - 1 - 1 -           | 2119580-1   | MECHANICAL FEED ASSEMBLY            |    | 239  |
| -   | 1 - 1 - 1 - 1 -         | 2844940-1   | AIR FEED MODULE                     |    | 238  |
| -   | REF REF REF REF REF REF | 994970-2    | COUNTER, MAGNETIC                   |    | 164  |
| -   | 1 1 1 1 1 1             | 2844908-1   | SCREW, LOCKING                      |    | 99   |
| -   | 1 1 1 1 1 1             | 2844907-1   | POST, LOCKING                       |    | 98   |
| -   | 1 1 1 1 1 1             | 455888-5    | SPACER, CRIMPER                     |    | 82   |
| -   | 1 1 1 1 1 1             | 1803607-3   | DOCUMENTATION PACKAGE               |    | 71   |
| -   | 1 1 1 1 1 1             | 2119791-5   | DEPRESSOR, WIRE                     |    | 70   |
| -   | 1 1 1 1 1 1             | 2119943-1   | WASHER, SPACER                      |    | 69   |
| -   | 1 1 1 1 1 1             | 2119740-1   | TAG, IDENTIFICATION                 |    | 67   |
| -   | 2 2 2 2 2 2             | 2168078-1   | SCREW, DRIVE, RH, RoHS, 2 x .188    |    | 66   |
| -   | 1 1 1 1 1 1             | 2168083-2   | SCR, SKT HD CAP, RoHS, M4 X 8.0     |    | 60   |
| -   | 1 1 1 1 1 1             | 5-18022-5   | SCR, HEX HD CAP, M4 X 6.0           |    | 59   |
| -   | 1 1 1 1 1 1             | 985575-3    | SCR, FLT SKT HD CAP M3 X 10.0       |    | 57   |
| -   | 1 1 1 1 1 1             | 1338685-1   | PAWL, FEED                          |    | 56   |
| -   | 4 4 4 4 4 4             | 2168083-3   | SCR, SKT HD CAP, RoHS, M4 X 12.0    |    | 54   |
| -   | 2 2 2 2 2 2             | 2168083-9   | SCR, SKT HD CAP, RoHS, M4 X 20      |    | 53   |
| -   | 1 2 1 2 1 2             | 18023-9     | SCR, SKT HD CAP M4 X 6.0            |    | 49   |
| -   | - 1 - 1 - 1 -           | 2119652-1   | FEED CAM, PRE FEED                  |    | 48   |
| -   | - 1 - 1 - 1 -           | 2119653-1   | FEED CAM, POST FEED                 |    | 47   |
| -   | 1 1 - - 1 1             | 1803583-9   | APPLICATOR BASIC ASSEMBLY, SF       |    | 46   |
| -   | 1 1 1 1 1 1             | 1803515-1   | RAM ASSEMBLY, SF ATLANTIC           |    | 44   |
| -   | 1 1 1 1 1 1             | 1803602-1   | SCR, BHSC, RoHS (M8 X 25)           |    | 41   |
| -   | 1 1 1 1 1 1             | 1752356-1   | SUPPORT, TERMINAL                   |    | 34   |
| -   | 2 2 2 2 2 2             | 2079383-5   | SCR, BHSC, RoHS (M4 X 20)           |    | 33   |
| -   | 2 2 2 2 2 2             | 2-2844962-8 | SPACER, CYLINDRICAL, STRIP GUIDE    |    | 30   |
| -   | 1 1 1 1 1 1             | 2844992-4   | ASSEMBLY, STRIP GUIDE               |    | 29   |
| -   | 1 1 1 1 1 1             | 455888-3    | SPACER, CRIMPER                     |    | 28   |
| -   | 1 1 1 1 1 1             | 240792-1    | DRAG, TERMINAL                      |    | 25   |
| -   | 1 1 1 1 1 1             | 1320928-2   | STRIP GUIDE                         |    | 24   |
| -   | 1 1 - - 1 1             | 2168083-2   | SCR, SKT HD CAP, RoHS, M4 X 8.0     |    | 21   |
| -   | 2 2 1 1 2 2             | 1-18028-2   | WASHER, FLAT, REG M4                |    | 20   |
| -   | 1 1 - - 1 1             | 2119533-1   | STRIPPER, SIDE FEED                 |    | 19   |
| -   | 1 1 1 1 1 1             | 2119806-1   | INSERT, SHEAR                       |    | 13   |
| -   | 1 1 1 1 1 1             | 3-22280-3   | SPRING, COMPRESSION                 |    | 12   |
| -   | 1 1 1 1 1 1             | 1-356885-4  | STOP, SHEAR                         |    | 11   |
| -   | 1 1 1 1 1 1             | 2119805-1   | SHEAR HOLDER, FRONT                 |    | 10   |
| -   | 1 1 1 1 1 1             | 318707-1    | FLOATING SHEAR, FRONT               |    | 9    |
| -   | 1 2 2 1 1 1             | 6-1633927-3 | ANVIL, COMBINATION                  |    | 8    |
| -   | 1 1 1 1 1 1             | 6-240641-8  | SPACER                              |    | 7    |
| -   | - - - - - -             | -           | -                                   |    | 6    |
| -   | 1 1 1 1 1 1             | 2119781-1   | DEPRESSOR, SHEAR                    |    | 5    |
| -   | 1 1 1 1 1 1             | 3-238011-1  | BLOCK, CRIMPER SPACER               |    | 4    |
| -   | 1 2 2 1 1 1             | 3-1633996-6 | CRIMPER, INSULATION SPECIAL         |    | 3    |
| -   | - - - - - -             | -           | -                                   |    | 2    |
| -   | 1 2 2 1 1 1             | 7-568176-4  | CRIMPER, WIRE                       |    | 1    |

| REV  | DATE        | DESCRIPTION | DATE | BY | APPV |
|------|-------------|-------------|------|----|------|
| OWN  | T. BROOKENS | 28FEB2023   |      |    |      |
| CHK  | M. HERR     | 28FEB2023   |      |    |      |
| APPV | T. ELBIN    | 28FEB2023   |      |    |      |

TE Connectivity  
 Harrisburg, PA 17105-3608

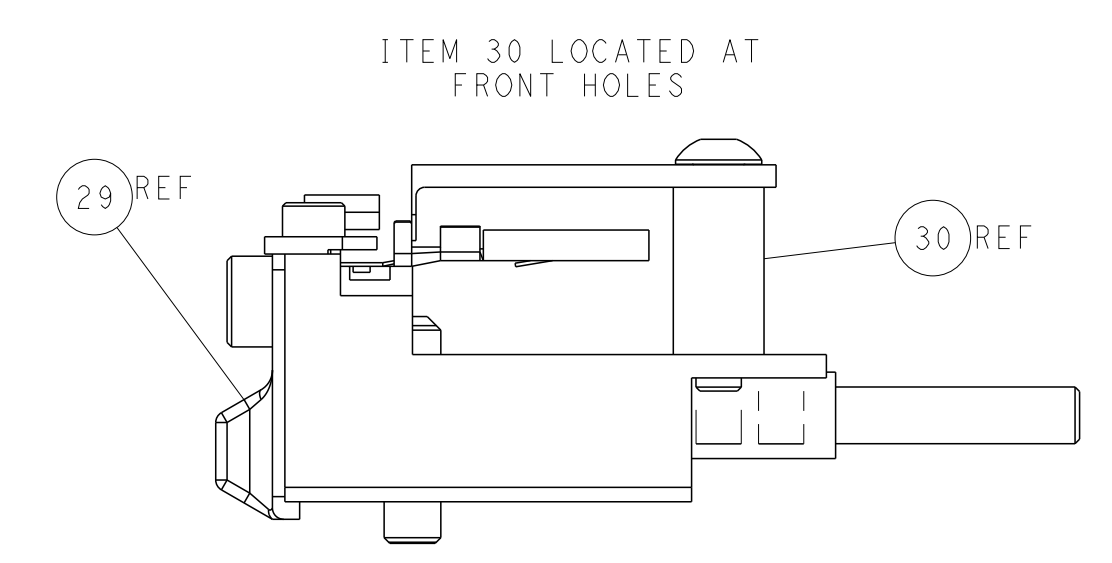
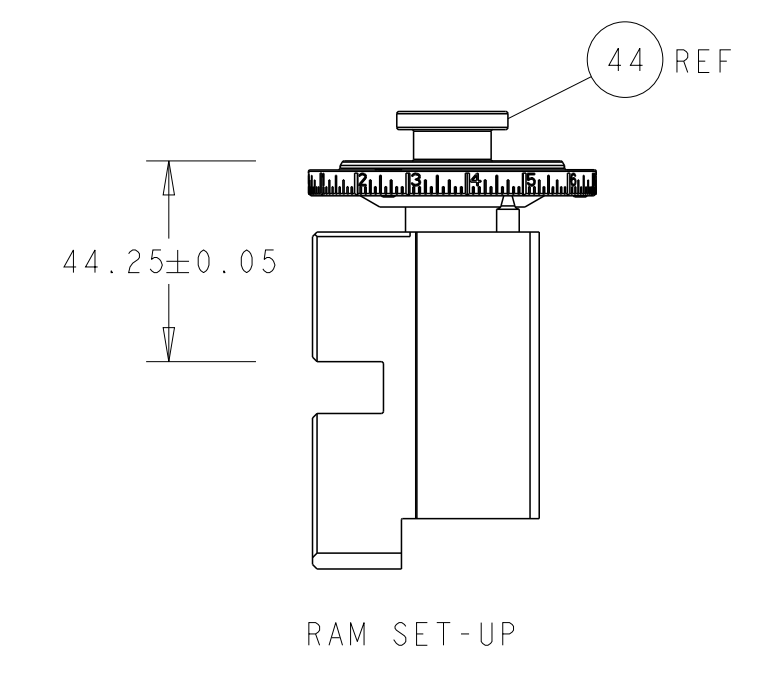
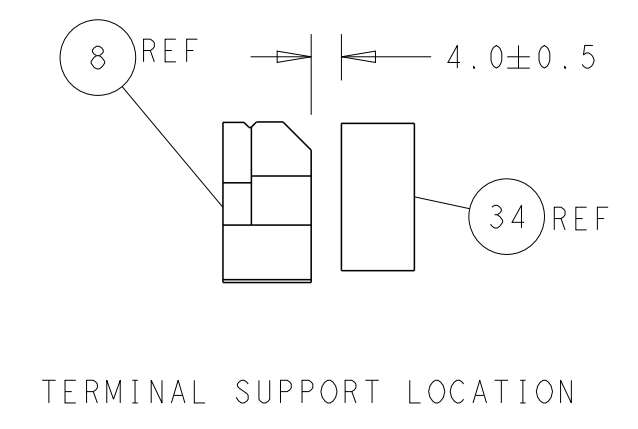
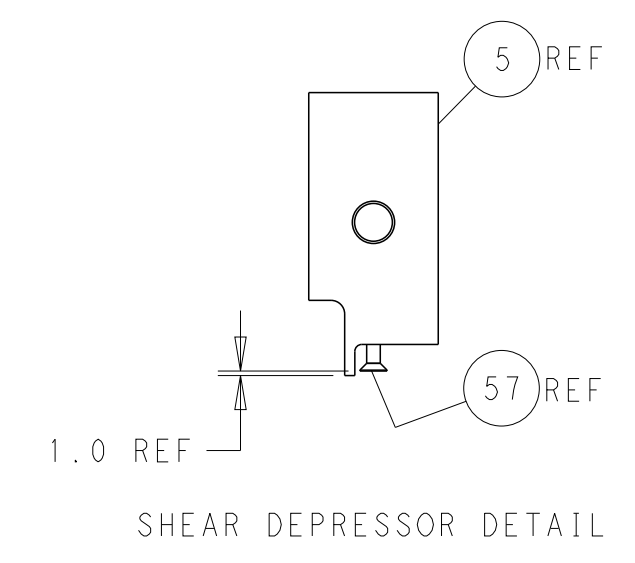
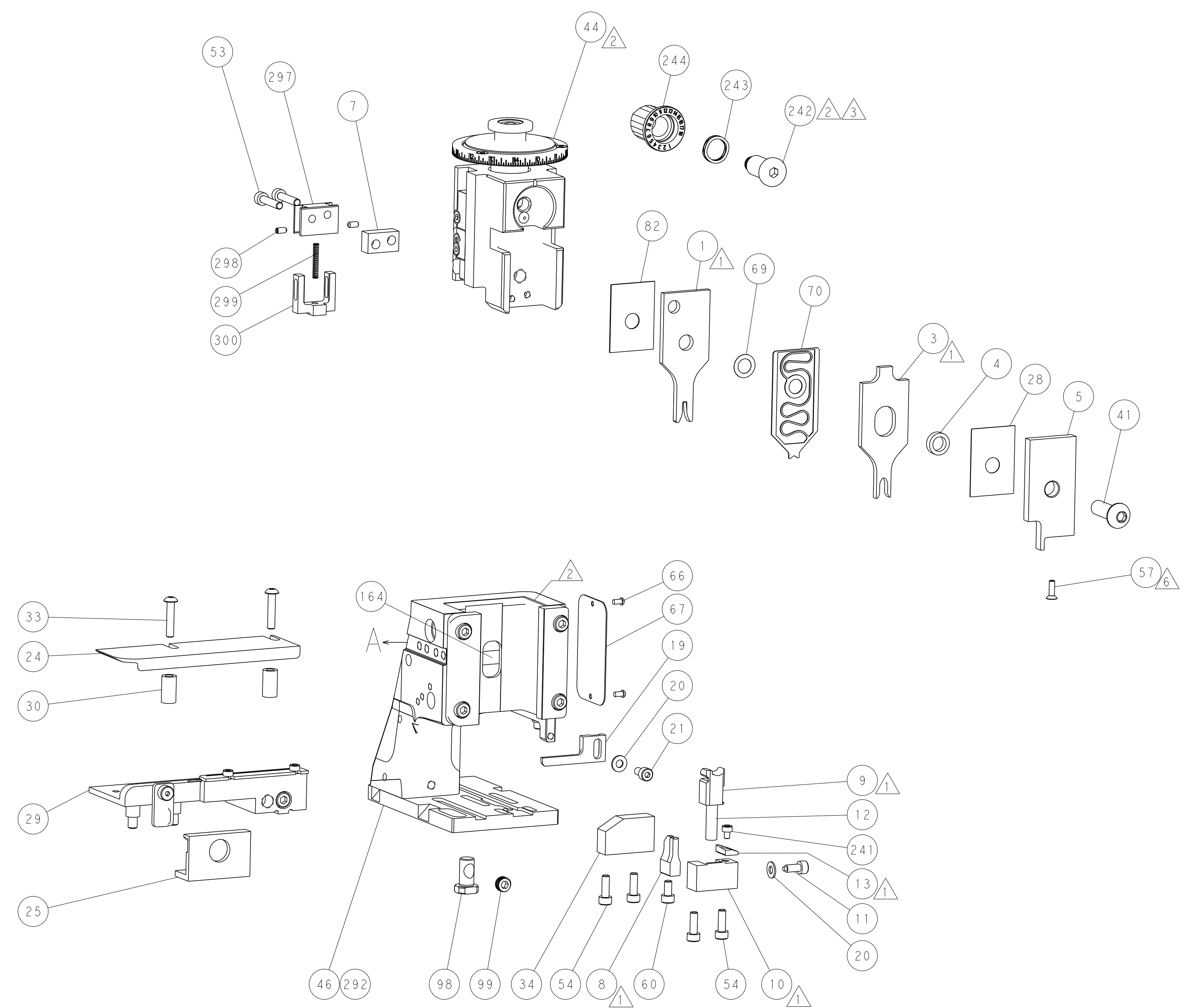
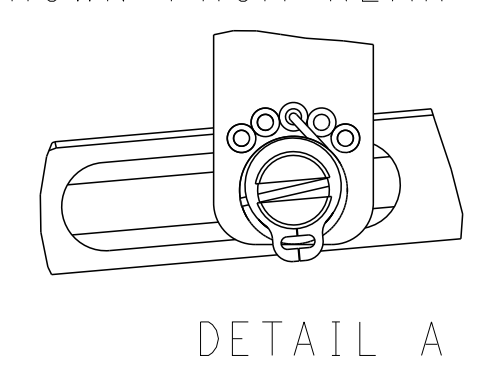
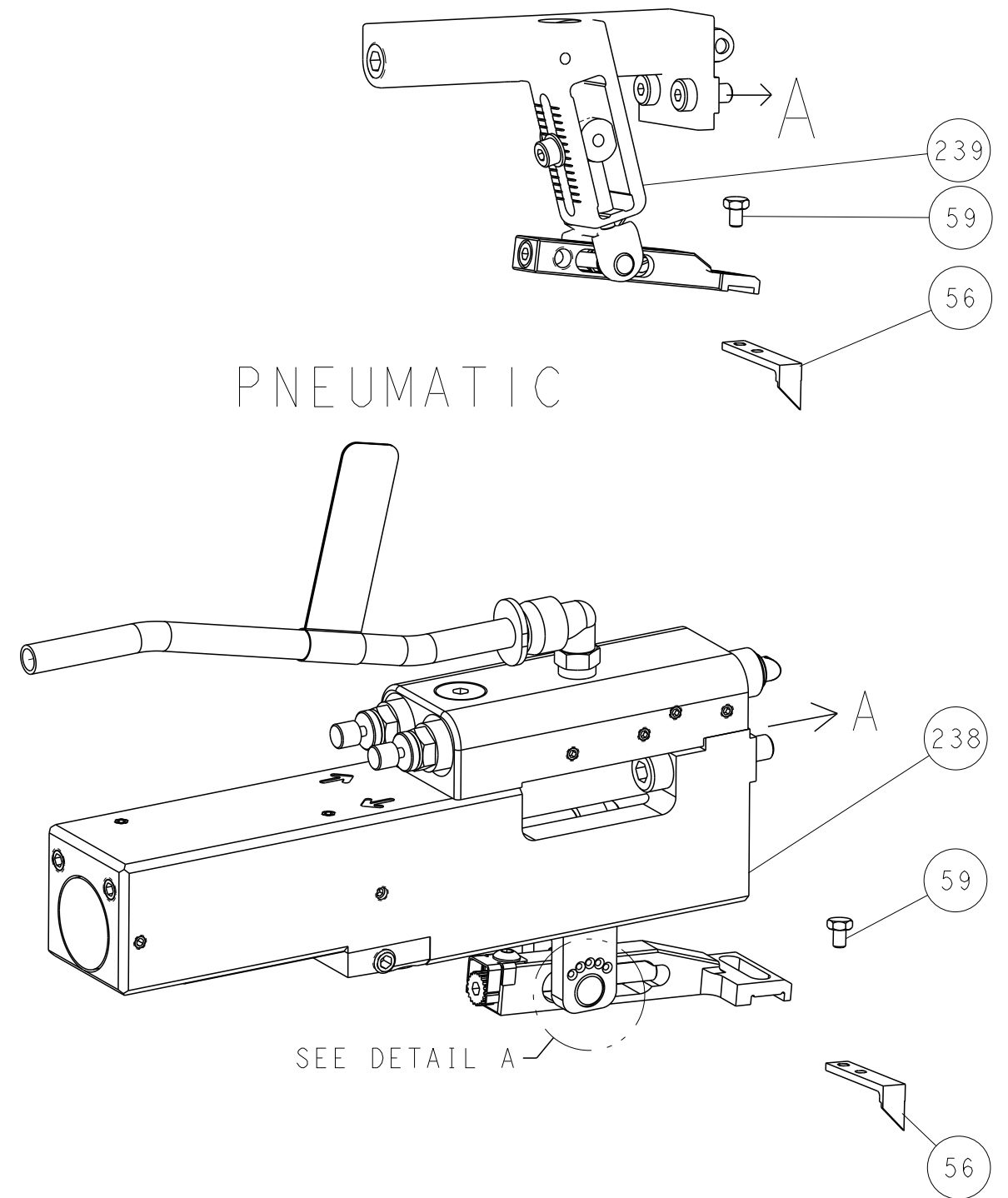
OCEAN 2.0 Side Feed  
 Applicator

SIZE: A1 CAGE CODE: 00779 DRAWING NO: 2837241  
 RESTRICTED TO: -

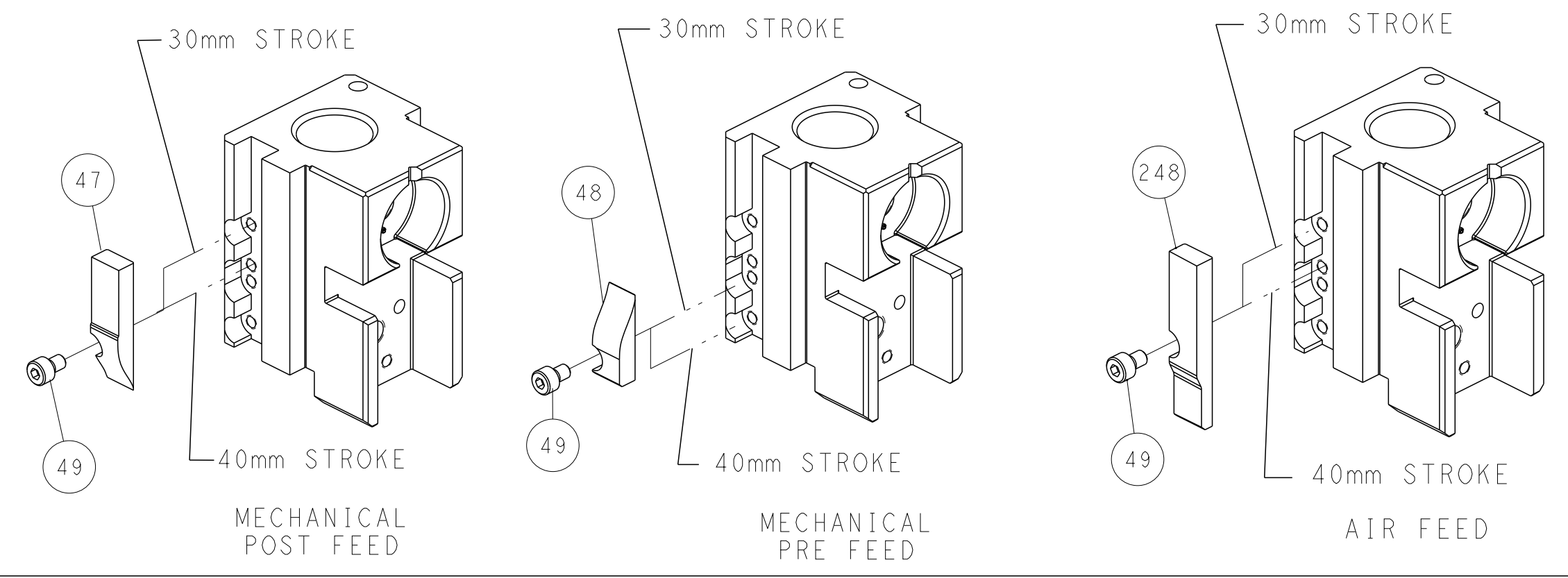
Customer Accessible Production Drawing SCALE: 1:2 SHEET: 1 OF 4 REV: A

| LOC | DIST | REVISIONS |     |             |      |     |      |
|-----|------|-----------|-----|-------------|------|-----|------|
| A   | 66   | P         | LTN | DESCRIPTION | DATE | OWN | APVD |
|     |      | -         |     | SEE SHEET 1 | -    | -   | -    |

# FEED TYPE MECHANICAL



# CAM POSITIONS



**ATLANTIC VERSION**  
 Shown on sheets 1 of 4 & 2 of 4  
 (Pacific version shown on sheets 3 of 4 & 4 of 4)

|                       |  |   |  |   |  |   |  |
|-----------------------|--|---|--|---|--|---|--|
| DIMENSIONS:<br>mm<br> |  | TOLERANCES UNLESS OTHERWISE SPECIFIED:<br>0 PLC ±<br>1 PLC ±<br>2 PLC ±<br>3 PLC ±<br>4 PLC ±<br>ANGLES ±<br>FINISH |  | DWN T. BROOKS 28FEB2023<br>CHK M. HERR 28FEB2023<br>APVD T. ELBIN 28FEB2023 |  | <b>STE</b> TE Connectivity<br>Harrisburg, PA 17105-3608 |  |
| MATERIAL              |  | WEIGHT  |  | NAME  |  | RESTRICTED TO   |  |
|                       |  |   |  | OCEAN 2.0 Side Feed Applicator  |  |   |  |
|                       |  |   |  | SIZE CAGE CODE DRAWING NO   |  |   |  |
|                       |  |   |  | A1 00779 C=2837241  |  |   |  |
|                       |  | Customer Accessible Production Drawing  |  | SCALE 1:2   |  | SHEET 2 OF 4 REV A                                      |  |

| PART NUMBER | REVISION | DESCRIPTION              | FEED TYPE  |
|-------------|----------|--------------------------|------------|
| 2-2837241-1 | A        | FINE CRIMP HEIGHT ADJUST | MECHANICAL |
| 2-2837241-2 | A        | FINE CRIMP HEIGHT ADJUST | PNEUMATIC  |
| 7-2837241-7 | A        | CRIMP TOOLING KIT        | -          |

PACIFIC VERSION TERMINATOR  
 INTERFACE ADAPTER



| APPLICATOR DATA |                |      |
|-----------------|----------------|------|
| CRIMP           | SIZE           | TYPE |
| WIRE            | 2.18 mm [.086] | F    |
| INSUL           | 3.43 mm [.135] | O    |

APPLICATOR INSTRUCTIONS  
 408-35042

| TERMINAL DATA: LEAR TERMINAL                     |           | LEAR CRIMP SPECIFICATION           |        |
|--|-----------|------------------------------------|--------|
| TERMINAL NAME: 1.6mm CONTACT, RECEPTACLE, SEALED |           |                                    |        |
| WIRE STRIP LENGTH                                |           | TERMINAL INSULATION DIAMETER RANGE |        |
| 3.90-4.70 mm [1.54-.185 IN]                      |           | Ø1.70-2.50 mm [0.067-.098 IN]      |        |
| TERMINAL APPLICATION SPECIFICATION               | LEAR SPEC |                                    | AT9106 |

| TERMINALS APPLIED |               |           |               | SEAL INSULATION DIAMETER RANGE |
|-------------------|---------------|-----------|---------------|--------------------------------|
| TE TERMINAL       | LEAR TERMINAL | TE SEAL   | LEAR SEAL     |                                |
| 1949227-1         | 26037.201.179 | 1949110-1 | 14448.627.621 | 1.7-2.1                        |
| 2113225-1         | 26039.201.179 | 1949230-1 | 14458.627.610 | 1.9-2.5                        |

| WIRE SIZE | CRIMP HEIGHT mm [INCH]         | CRIMP HEIGHT REFERENCE SETTING |
|-----------|--------------------------------|--------------------------------|
| 1.50mm2   | 1.40 +/- 0.05 [0.055 +/- .002] | 7.3                            |
| 1.00mm2   | 1.30 +/- 0.05 [0.051 +/- .002] | 8.3                            |
| 0.75mm2   | 1.20 +/- 0.05 [0.047 +/- .002] | 9.4                            |

- 1. RECOMMENDED SPARE PARTS
- 2. REFER TO SUPPLIED INSTRUCTION SHEET FOR CLEANING, LUBRICATION AND STORAGE OF APPLICATOR.
- 3. APPLY PART NUMBER 2-23419-6 LOCTITE TO THREADS OF ITEM 242.
- 4. CRIMP HEIGHT REFERENCE SETTING WAS THE SETTING USED WHEN THE APPLICATOR WAS QUALIFIED AT THE FACTORY. ADJUSTMENT MAY BE NECESSARY WHEN RUNNING APPLICATOR IN THE FIELD.
- 5. UNLESS SPECIFIED OTHERWISE TORQUE VALUES SHALL BE USED PER DOCUMENT 101-35000.
- 6. APPLY TORQ-SEAL IN ALLEN SOCKET TO FILL HOLE AFTER FLAT HD HAS BEEN ADJUSTED TO CORRECT HEIGHT AT QUALIFICATION. APPLY #1-23419-5 LOC-TITE TO THREADS.

**\*WARNING**  
 ON INSTALLATION, SET WIRE DISC TO CRIMP HEIGHT REFERENCE SETTING FOR LARGEST WIRE SIZE. CRIMP HEIGHT REFERENCE SETTINGS GREATER THAN THE VALUE SHOWN MAY CAUSE DAMAGE TO THE CRIMP TOOLING, REFER TO THE INSTRUCTION SHEET FOR PROPER SETUP AND ADJUSTMENTS.

PACIFIC VERSION  
 Shown on sheets 3 of 4 & 4 of 4  
 (Atlantic version shown on sheets 1 of 4 & 2 of 4)

| LOC | DIST | REVISIONS |     |             |      |     |      |
|-----|------|-----------|-----|-------------|------|-----|------|
| A   | 66   | P         | LTN | DESCRIPTION | DATE | OWN | APVD |
| -   | -    | -         | -   | SEE SHEET 1 | -    | -   | -    |

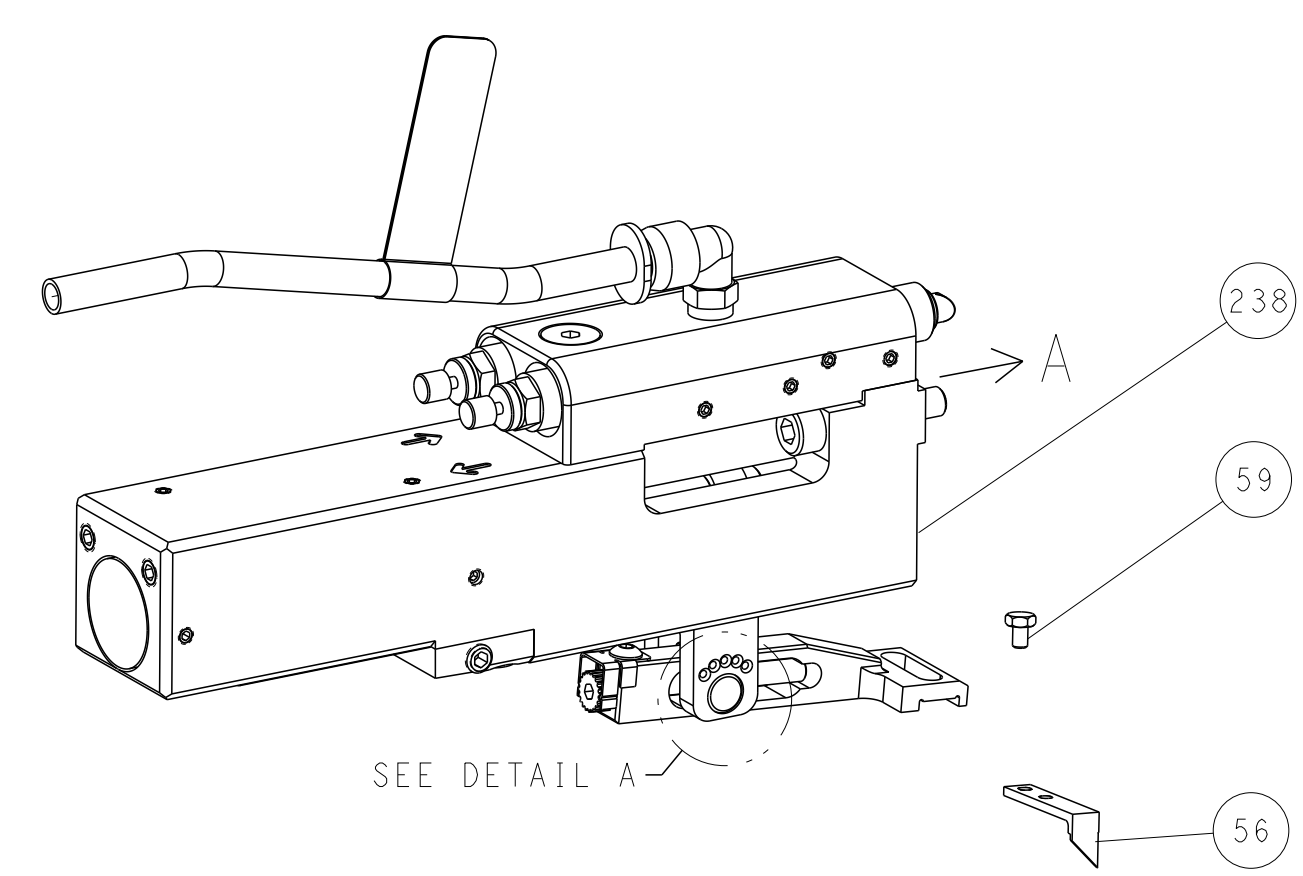
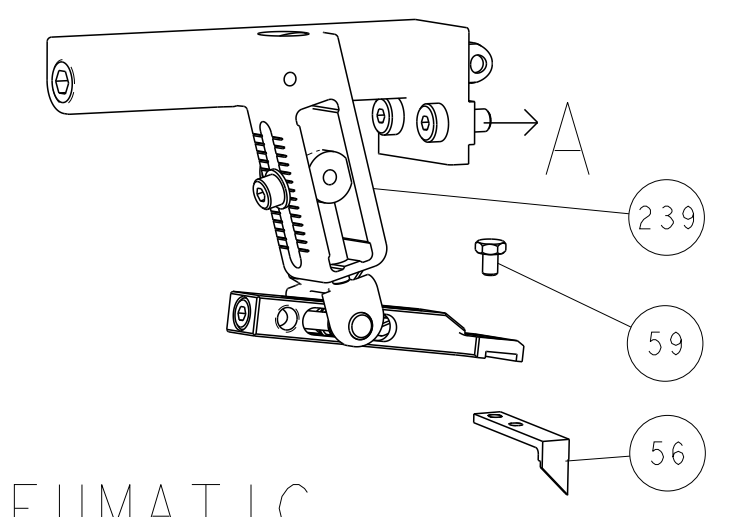
|   |     |     |             |                                     |  |  |     |
|---|-----|-----|-------------|-------------------------------------|--|--|-----|
| - | 1   | 1   | 1803945-4   | TONKER                              |  |  | 300 |
| - | 1   | 1   | 22278-9     | SPRING, COMPRESSION                 |  |  | 299 |
| - | 2   | 2   | 4-18032-3   | SCR, SET, FLT PNT, M3 X 6.0         |  |  | 298 |
| - | 1   | 1   | 1803944-1   | SPACER, TONKER                      |  |  | 297 |
| - | 1   | 1   | 2119082-2   | CAM, SNAIL, INSULATION ADJUSTMENT   |  |  | 244 |
| - | 1   | 1   | 2079764-1   | WASHER, WAVE SPRING, CREST-TO-CREST |  |  | 243 |
| - | 1   | 1   | 2119083-1   | RETAINER, INSULATION DIAL           |  |  | 242 |
| - | 1   | 1   | 7-18023-7   | SCR, SKT HD CAP M3 X 4.0            |  |  | 241 |
| - | -   | 1   | 2119580-1   | MECHANICAL FEED ASSEMBLY            |  |  | 239 |
| - | 1   | -   | 2844940-1   | AIR FEED MODULE                     |  |  | 238 |
| - | REF | REF | 994970-2    | COUNTER, MAGNETIC                   |  |  | 164 |
| - | 1   | -   | 2119641-2   | FEED CAM, AIR FEED                  |  |  | 151 |
| - | 1   | 1   | 2168083-8   | SCR, SKT HD CAP, RoHS, M4 X 16      |  |  | 144 |
| - | 4   | 4   | 2168083-9   | SCR, SKT HD CAP, RoHS, M4 X 20      |  |  | 143 |
| - | -   | 1   | 2119653-2   | FEED CAM, POST FEED                 |  |  | 142 |
| - | 1   | 1   | 1-1803583-0 | APPLICATOR BASIC ASSEMBLY, SF       |  |  | 141 |
| - | 1   | 1   | 1803516-1   | RAM ASSEMBLY, SF PACIFIC            |  |  | 140 |
| - | 1   | 1   | 2844908-1   | SCREW, LOCKING                      |  |  | 99  |
| - | 1   | 1   | 2844907-1   | POST, LOCKING                       |  |  | 98  |
| - | 1   | 1   | 455888-5    | SPACER, CRIMPER                     |  |  | 82  |
| - | 1   | 1   | 1803607-3   | DOCUMENTATION PACKAGE               |  |  | 71  |
| - | 1   | 1   | 2119791-5   | DEPRESSOR, WIRE                     |  |  | 70  |
| - | 1   | 1   | 2119943-1   | WASHER, SPACER                      |  |  | 69  |
| - | 1   | 1   | 2119740-1   | TAG, IDENTIFICATION                 |  |  | 67  |
| - | 2   | 2   | 2168078-1   | SCREW, DRIVE, RH, RoHS, 2 x .188    |  |  | 66  |
| - | 1   | 1   | 5-18022-5   | SCR, HEX HD CAP, M4 X 6.0           |  |  | 59  |
| - | 1   | 1   | 985575-3    | SCR, FLT SKT HD CAP M3 X 10.0       |  |  | 57  |
| - | 1   | 1   | 1338685-1   | PAWL, FEED                          |  |  | 56  |
| - | 2   | 2   | 2168083-9   | SCR, SKT HD CAP, RoHS, M4 X 20      |  |  | 53  |
| - | 1   | 2   | 18023-9     | SCR, SKT HD CAP M4 X 6.0            |  |  | 49  |
| - | -   | 1   | 2119652-1   | FEED CAM, PRE FEED                  |  |  | 48  |
| - | 1   | 1   | 1803602-1   | SCR, BHSC, RoHS (M8 X 25)           |  |  | 41  |
| - | 1   | 1   | 1752356-1   | SUPPORT, TERMINAL                   |  |  | 34  |
| - | 2   | 2   | 2079383-5   | SCR, BHSC, RoHS (M4 X 20)           |  |  | 33  |
| - | 2   | 2   | 2-2844962-8 | SPACER, CYLINDRICAL, STRIP GUIDE    |  |  | 30  |
| - | 1   | 1   | 2844992-4   | ASSEMBLY, STRIP GUIDE               |  |  | 29  |
| - | 1   | 1   | 455888-3    | SPACER, CRIMPER                     |  |  | 28  |
| - | 1   | 1   | 240792-1    | DRAG, TERMINAL                      |  |  | 25  |
| - | 1   | 1   | 1320928-2   | STRIP GUIDE                         |  |  | 24  |
| - | 1   | 1   | 2168083-2   | SCR, SKT HD CAP, RoHS, M4 X 8.0     |  |  | 21  |
| - | 2   | 2   | 1-18028-2   | WASHER, FLAT, REG M4                |  |  | 20  |
| - | 1   | 1   | 2119533-1   | STRIPPER, SIDE FEED                 |  |  | 19  |
| - | 1   | 1   | 2119806-1   | INSERT, SHEAR                       |  |  | 13  |
| - | 1   | 1   | 3-22280-3   | SPRING, COMPRESSION                 |  |  | 12  |
| - | 1   | 1   | 1-356885-4  | STOP, SHEAR                         |  |  | 11  |
| - | 1   | 1   | 2119805-1   | SHEAR HOLDER, FRONT                 |  |  | 10  |
| - | 1   | 1   | 318707-1    | FLOATING SHEAR, FRONT               |  |  | 9   |
| - | 1   | 1   | 6-1633927-3 | ANVIL, COMBINATION                  |  |  | 8   |
| - | 1   | 1   | 6-240641-8  | SPACER                              |  |  | 7   |
| - | -   | -   | -           | -                                   |  |  | 6   |
| - | 1   | 1   | 2119781-1   | DEPRESSOR, SHEAR                    |  |  | 5   |
| - | 1   | 1   | 3-238011-1  | BLOCK, CRIMPER SPACER               |  |  | 4   |
| - | 1   | 1   | 3-1633996-6 | CRIMPER, INSULATION SPECIAL         |  |  | 3   |
| - | -   | -   | -           | -                                   |  |  | 2   |
| - | 1   | 1   | 7-568176-4  | CRIMPER, WIRE                       |  |  | 1   |

| DIMENSIONS: |         | TOLERANCES UNLESS OTHERWISE SPECIFIED: |         | MATERIAL: |         | FINISH:  |          |
|-------------|---------|--|---------|-----------|---------|----------|----------|
| mm          | 0 PLC ± | 1 PLC ±                                | 2 PLC ± | 3 PLC ±   | 4 PLC ± | ANGLES ± | FINISH ± |

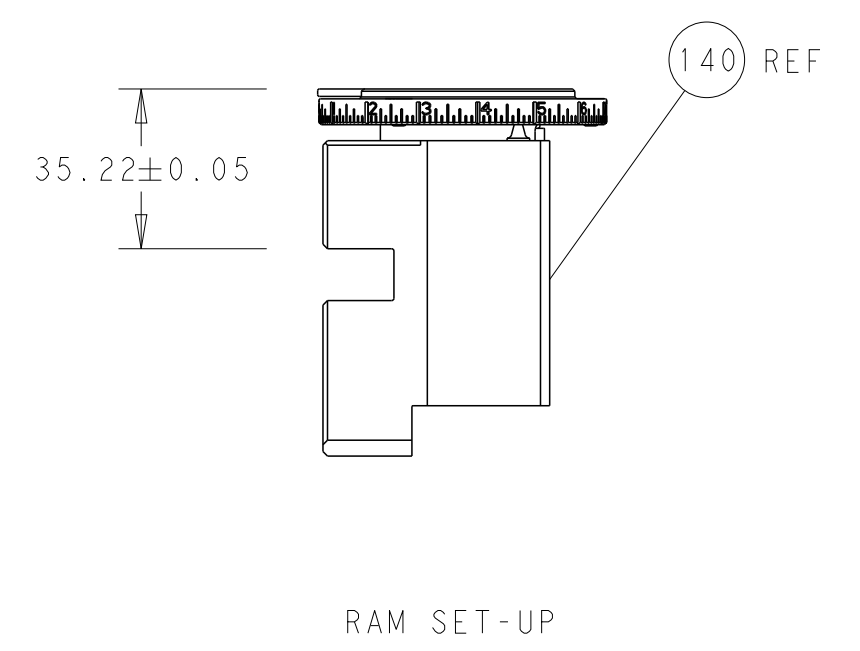
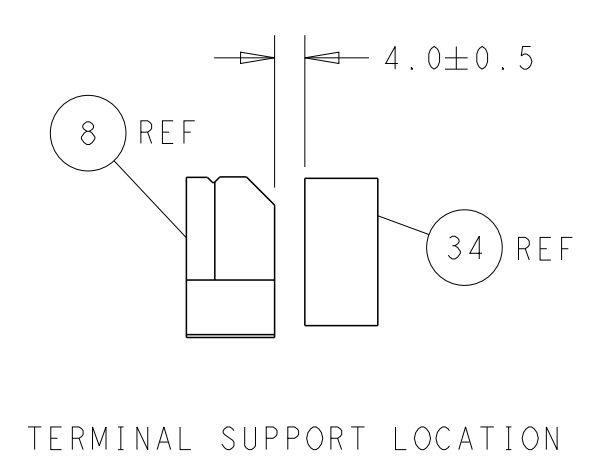
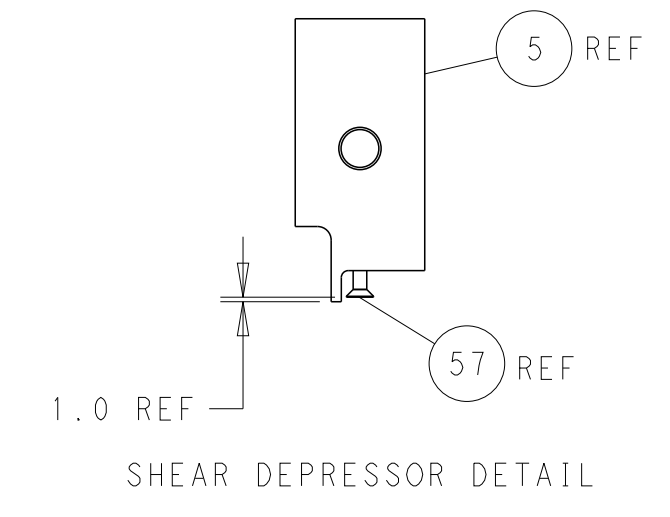
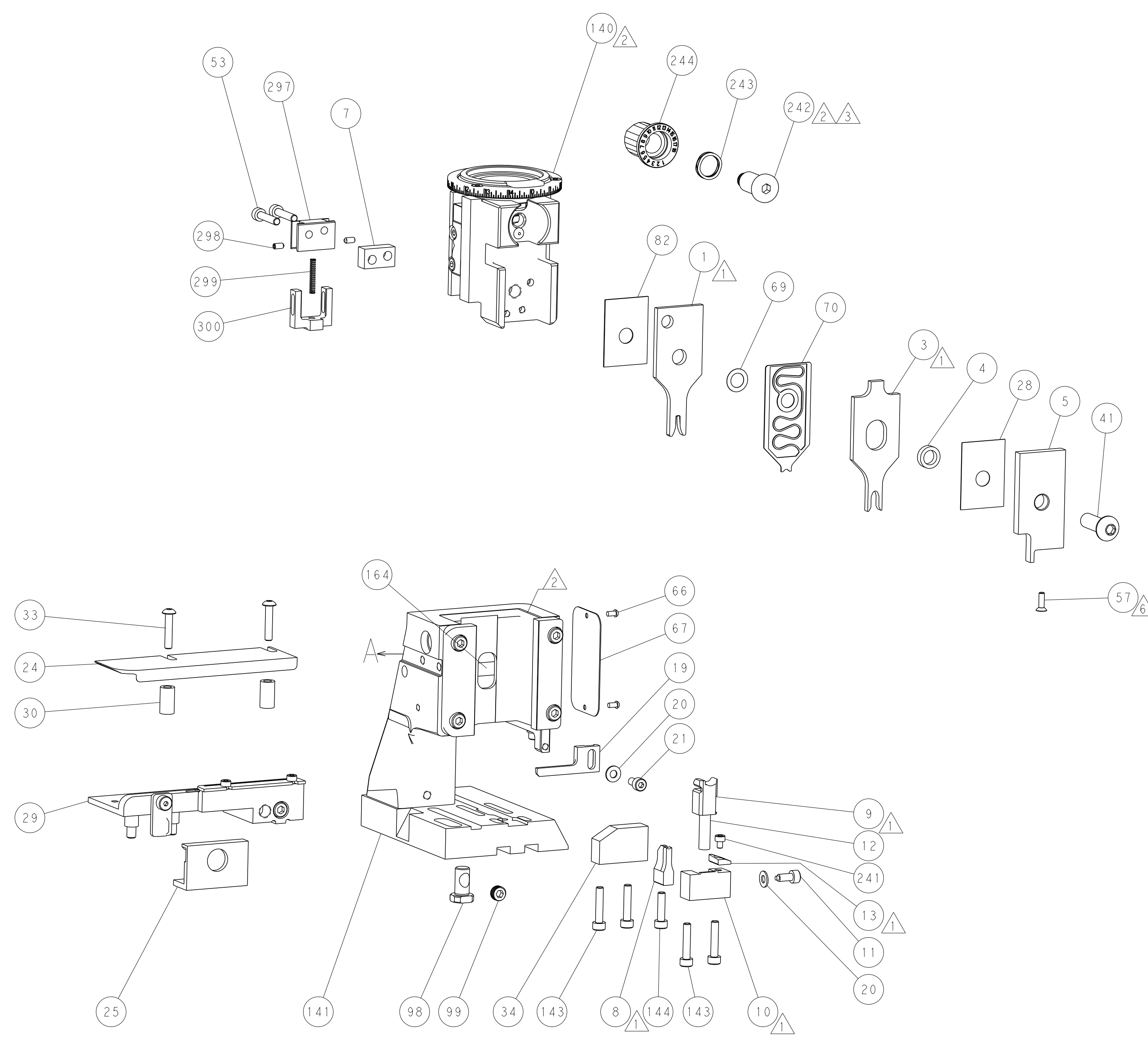
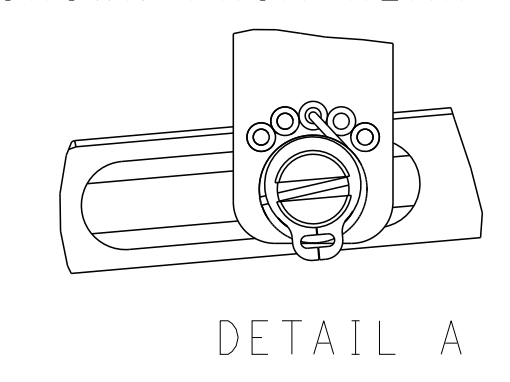
|  |                                |              |
|--|--------------------------------|--------------|
| OWN                                    | T. BROOKENS                    | 28FEB2023    |
| CHK                                    | M. HERR                        | 28FEB2023    |
| APVD                                   | T. ELBIN                       | 28FEB2023    |
| NAME                                   | OCEAN 2.0 Side Feed Applicator |              |
| SIZE                                   | CAGE CODE                      | DRAWING NO   |
| A1                                     | 00779                          | 2837241      |
| Customer Accessible Production Drawing |                                |              |
| SCALE                                  | 1:2                            | SHEET 3 OF 4 |
| REV                                    | A                              |              |

| LOC | DIST | REVISIONS |     |             |      |     |      |
|-----|------|-----------|-----|-------------|------|-----|------|
| A   | 66   | P         | LTN | DESCRIPTION | DATE | OWN | APVD |
|     |      | -         |     | SEE SHEET 1 |      |     |      |

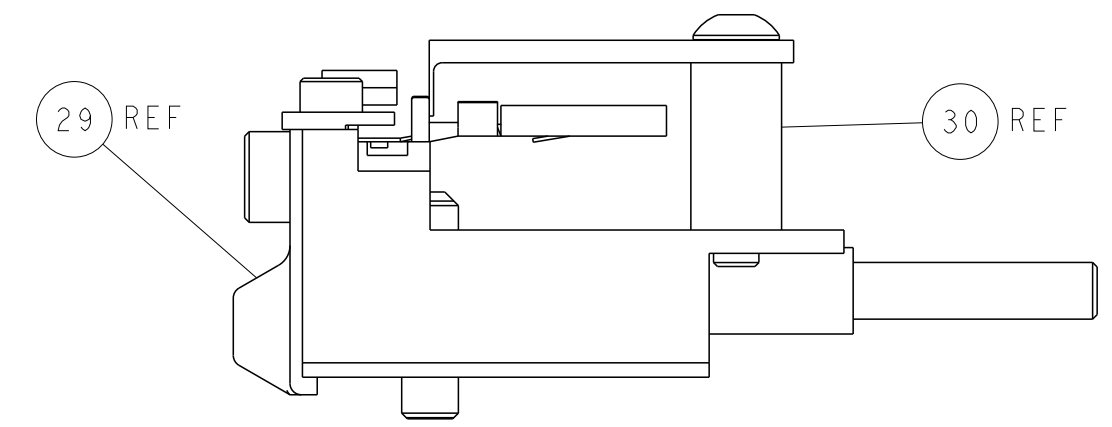
# FEED TYPE MECHANICAL



## FEED SPRING SETTING POSITION (SHOWN FROM REAR SIDE)

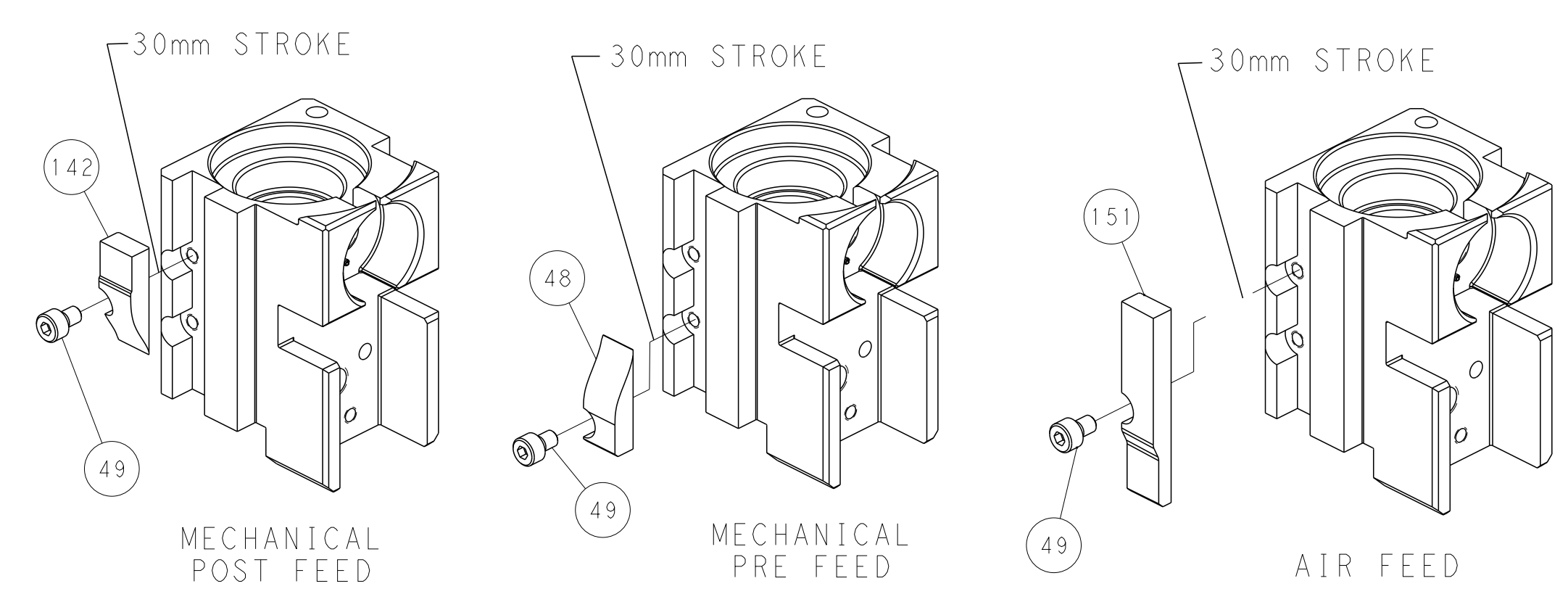


ITEM 30 LOCATED AT FRONT HOLES



FEED TRACK POSITION GUIDE BY INSULATION BARREL

# CAM POSITIONS



**PACIFIC VERSION**  
 Shown on sheets 3 of 4 & 4 of 4  
 (Atlantic version shown on sheets 1 of 4 & 2 of 4)

|             |         |  |         |  |         |                                |  |
|-------------|---------|--|---------|--|---------|--------------------------------|--|
| DIMENSIONS: |         | TOLERANCES UNLESS OTHERWISE SPECIFIED: |         | DWN T. BROOKINS 28FEB2023              |         | TE Connectivity                |  |
| mm          | 0 PLC ± | 1 PLC ±                                | 2 PLC ± | 3 PLC ±                                | 4 PLC ± | Harrisburg, PA 17105-3608      |  |
| MATERIAL:   |         | FINISH:                                |         | CHK M. HERR 28FEB2023                  |         | NAME                           |  |
|             |         |  |         | APVD T. ELBIN 28FEB2023                |         | OCEAN 2.0 Side Feed Applicator |  |
|             |         |  |         | PRODUCT SPEC                           |         | SIZE CAGE CODE DRAWING NO      |  |
|             |         |  |         | APPLICATION SPEC                       |         | A1 00779 C=2837241             |  |
|             |         |  |         | WEIGHT                                 |         | RESTRICTED TO                  |  |
|             |         |  |         | Customer Accessible Production Drawing |         | SCALE 1:2 SHEET 4 OF 4 REV A   |  |