

ATLANTIC VERSION TERMINATOR INTERFACE ADAPTER	PART NUMBER	REVISION	DESCRIPTION	FEED TYPE	CONVERT TO	PART NUMBERS REQUIRED					
	2837194-1	A	FINE CRIMP HEIGHT ADJUST	MECHANICAL	PNEUMATIC FEED	2119950-1	1338683-8	5-18022-5	2119641-1	2119799-1	2063440-1
	2837194-2	A	FINE CRIMP HEIGHT ADJUST	PNEUMATIC	SERVO LATCH PLATE	2119951-1	-	8-2837194-5	1901094-3	-	2168400-6 (QUANTITY 2)
					SMART APPLICATOR	2161326-1	-	8-2837194-4	-	-	
					MECHANICAL FEED	2119949-1	1338683-8	5-18022-5	2119653-1	-	-
	2837194-5	A	FINE CRIMP HEIGHT ADJUST	SERVO LATCH PLATE	SERVO LATCH PLATE	2119951-1	-	8-2837194-5	1901094-3	-	2168400-6 (QUANTITY 2)
					SMART APPLICATOR	2161326-1	-	8-2837194-4	-	-	
	2837194-6	A	NON-CRIMP HEIGHT ADJUST	SERVO LATCH PLATE	MECHANICAL FEED	2119949-1	1338683-8	5-18022-5	2119653-1	-	-
2837194-7	A	FINE CRIMP HEIGHT ADJUST	NONE	PNEUMATIC FEED	2119950-1	1338683-8	5-18022-5	2119641-1	2119799-1	2063440-1	
7-2837194-7	A	CRIMP TOOLING KIT	-	-	-	-	-	-	-	-	

APPLICATOR DATA		
CRIMP	SIZE	TYPE
WIRE	3.02 mm [.119]	F
INSUL	3.00 mm [.118]	O

APPLICATOR INSTRUCTIONS  
408-10389

TERMINAL DATA: DELPHI TERMINAL DELPHI PACKARD CRIMP SPECIFICATION	
TERMINAL NAME: TAXI HES 2.4 TERMINAL, F	
WIRE STRIP LENGTH 4.52-5.28 mm [.178-.208 IN]	TERMINAL INSULATION DIAMETER RANGE Ø2.45-2.70 mm [.096-.106 IN]
TERMINAL APPLICATION SPECIFICATION 13783289 CRIMP INFO SHEET-PG1 Rev -	
TERMINALS APPLIED	
TE TERMINAL	DELPHI TERMINAL
3311152-1	13783289

WIRE SIZE	CRIMP HEIGHT mm [INCH]	CRIMP HEIGHT REFERENCE SETTING
2.00mm2	1.75+/-0.05 [.069+/- .002]	8.1

- 1. RECOMMENDED SPARE PARTS
- 2. GREASE BEARING SURFACES LIGHTLY
- 3. LUBRICATE DAILY PER THE APPLICATOR INSTRUCTION SHEET SUPPLIED WITH THE APPLICATOR.
- 4. APPLICATOR SPECIFIC DATA TO BE ENTERED INTO BLANK MEMORY CHIP AT ASSEMBLY. SEE BELOW FOR PART NUMBER:  
 MECHANICAL FEED WITH "SMART APPLICATOR" CONVERSION: 8-2837194-4  
 PNEUMATIC FEED WITH "SMART APPLICATOR" CONVERSION: 8-2837194-5  
 SERVO FEED WITH "FINE CRIMP HEIGHT ADJUST": 8-2837194-5  
 SERVO FEED WITH "NON-CRIMP HEIGHT ADJUST": 8-2837194-6
- 5. ADJUSTMENT OF THE STRIPPER MAY BE REQUIRED WHEN MOVING THE APPLICATOR BETWEEN BENCH AND LEADMAKER APPLICATIONS.
- 6. APPLY PART NUMBER 1-23419-5 LOCTITE TO THREADS OF ITEM 62. APPLY PART NUMBER 2-23419-6 LOCTITE TO THREADS OF ITEM 242. FOR -6 ONLY APPLY PART NUMBER 1-23419-5 LOCTITE TO THREADS OF ITEM 37.
- 7. GREASE THREADS, GROOVE AND O-RING ON ITEMS 35 & 252.
- 8. MAGNET, ITEM 166 MUST BE ORIENTED CORRECTLY IN ORDER TO PROPERLY ACTUATE THE COUNTER.
- 9. CRIMP HEIGHT REFERENCE SETTING WAS THE SETTING USED WHEN THE APPLICATOR WAS QUALIFIED AT THE FACTORY. ADJUSTMENT MAY BE NECESSARY WHEN RUNNING APPLICATOR IN THE FIELD.
- 10. SPARE FEED CAM STORAGE LOCATION REFER TO INSTRUCTION SHEET FOR ADDITIONAL INFORMATION.
- 11. TO CONVERT THE APPLICATOR TO A NON-CARRIER CUTTING STYLE, REMOVE ITEM 13 AND ATTACH TO THE LOCATION ON THE BACK SIDE OF THE HOUSING. REFER TO INSTRUCTION SHEET FOR ADDITIONAL INFORMATION.
- 12. WHEN ASSEMBLING A NON CRIMP HEIGHT ADJUST APPLICATOR (-6) USE SHIMS FROM ITEM 260 TO ACHIEVE A NOMINAL SHIM HEIGHT OF 4.05.

**\*WARNING**  
ON INSTALLATION, SET WIRE DISC, ITEM 40 TO LARGEST WIRE SIZE SETTING. USE OF SETTINGS BELOW MINIMUM REQUIRED CRIMP HEIGHT SETTING WILL CAUSE DAMAGE TO CRIMP TOOLING.

-77	-7	-6	-5	-2	-1	PART NO	DESCRIPTION	ITEM NO
-	-	1	-	-	-	2119957-2	APPLICATOR SHIM PACK	260

**ATLANTIC VERSION**  
Shown on sheets 1 of 4 & 2 of 4  
(Pacific version shown on sheets 3 of 4 & 4 of 4)

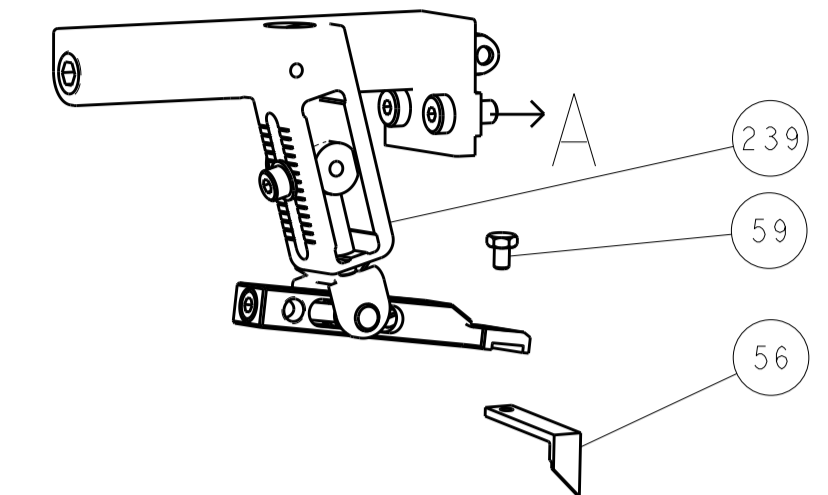
SET UP GAUGE	LOC	DIST	REVISIONS			
2119599-1	A	66	REV	DATE	BY	CHK
			1	DEVELOPMENT	27MAR2018	FZ
			A	RELEASE	18APR2018	AW

REV	DATE	BY	CHK	DESCRIPTION	ITEM NO		
-	1	-	1	1	8-21084-0 O-RING, .676 ID, .070 DIA. MAT.	252	
-	-	-	-	1	2119640-1 PUSH ROD, AIR FEED	250	
-	-	-	-	1	1803259-1 BUSHING, FLANGED	249	
-	-	-	-	1	2119641-1 FEED CAM, AIR FEED	248	
-	1	-	1	1	2119798-1 DETENT PIN	247	
-	1	-	1	1	1-22279-3 SPRING, COMPRESSION	246	
-	-	1	-	-	2119758-1 RAM, AMP STYLE, SIDE FEED, NON-ADJ.	245	
-	1	1	1	1	2119082-4 CAM, SNAIL, INSULATION ADJUSTMENT	244	
-	1	1	1	1	2079764-1 WASHER, WAVE SPRING, CREST-TO-CREST	243	
-	1	1	1	1	2119083-1 RETAINER, INSULATION DIAL	242	
-	1	1	1	1	7-18023-7 SCR, SKT HD CAP M3 X 4.0	241	
-	-	2	2	-	2168400-6 SHCS, LOW HEAD, RoHS, M5 X 16	240	
-	-	-	-	1	2119580-1 MECHANICAL FEED ASSEMBLY	239	
-	-	-	-	1	2063440-1 AIR FEED MODULE	238	
-	-	1	1	-	2119740-2 TAG, IDENTIFICATION	213	
-	-	1	1	-	1901094-3 SPACER, FEEDER	198	
-	-	-	-	2	21045-3 RING, RETAIN, EXTERN, 3/16 CRESCENT	172	
-	1	1	1	1	994969-1 MAGNET, RARE EARTH HIGH ENERGY	166	
-	REF	REF	REF	REF	994970-2 COUNTER, MAGNETIC	164	
-	-	-	-	1	240638-1 SPRING, FEED FINGER	163	
-	-	-	-	1	3-23627-7 PIN, RETAIN, GRVD, 3/16 X .854	137	
-	-	-	-	1	2119799-1 HOLDER, FEED FINGER, AF	136	
-	-	REF	REF	-	SEE NOTE 4 MEMORY CHIP, PROGRAMMED	135	
-	-	1	1	-	1633743-1 SERVO FEED LATCH ASM	133	
-	-	REF	REF	-	2119944-1 FEED FINGER ASSEMBLY, SF	117	
-	1	1	1	1	455888-6 SPACER, CRIMPER	82	
-	1	1	1	1	2119956-1 DOCUMENTATION PACKAGE	71	
-	1	-	-	1	2119740-1 TAG, IDENTIFICATION	67	
-	2	2	2	2	2168078-1 SCREW, DRIVE, RH, RoHS, 2 x .188	66	
-	1	-	1	1	2119793-1 LIMITER, ADJUSTMENT BOLT	63	
-	3	-	3	3	992763-5 SCR, SET, SOC, CONE PNT, M3 X 4.0	62	
-	1	1	1	1	2079383-4 SCR, BHSC, RoHS (M4 X 8)	60	
-	-	-	-	1	5-18022-5 SCR, HEX HD CAP, M4 X 6.0	59	
-	-	-	-	1	1338683-8 FEED PAWL	56	
-	4	4	4	4	2168400-1 SHCS, LOW HEAD, RoHS, M4 X 12	54	
-	2	2	2	2	2168083-8 SCR, SKT HD CAP, RoHS, M4 X 16	53	
-	1	1	1	1	5018030-1 NUT, HEX, REG, RoHS, M3	52	
-	1	1	1	1	811242-5 BUMPER, HOLD DOWN	51	
-	1	1	1	1	690753-2 SPACER, TONKER	50	
-	-	-	-	1	2	18023-9 SCR, SKT HD CAP M4 X 6.0	49
-	-	-	-	1	2119652-1 FEED CAM, PRE FEED	48	
-	-	-	-	1	2119653-1 FEED CAM, POST FEED	47	
-	1	1	1	1	2119656-9 APPLICATOR BASIC ASSEMBLY, SF	46	
-	1	-	-	1	2119370-1 RAM, AMP STYLE, SIDE FEED	44	
-	1	1	1	1	2079383-7 SCR, BHSC, RoHS (M8 X 25)	41	
-	1	-	-	1	2119645-1 DISC, NUMBERED FA WIRE ADJUSTMENT	40	
-	1	-	-	1	2119957-1 APPLICATOR SHIM PACK	39	
-	1	1	1	1	2119644-2 RAM WASHER, PRECISION	38	
-	1	1	1	1	2119085-1 FA HEAD, ATLANTIC STYLE	37	
-	1	-	-	1	2119092-1 BOLT, ADJUSTMENT	35	
-	1	1	1	1	1752356-1 SUPPORT, TERMINAL	34	
-	2	2	2	2	2079383-5 SCR, BHSC, RoHS (M4 X 20)	33	
-	1	1	1	1	2161328-1 HEX HEAD, FLANGED, M5 X 8mm LONG	32	
-	1	1	1	1	1-1320908-0 SPACER, STRIP GUIDE	30	
-	1	1	1	1	2119959-1 ASSEMBLY, STRIP GUIDE	29	
-	1	1	1	1	455888-3 SPACER, CRIMPER	28	
-	1	1	1	1	1320928-6 STRIP GUIDE	24	
-	1	1	1	1	2168083-2 SCR, SKT HD CAP, RoHS, M4 X 8.0	21	
-	2	2	2	2	1-18028-2 WASHER, FLAT, REG M4	20	
-	1	1	1	1	2119533-1 STRIPPER, SIDE FEED	19	
-	1	1	1	1	2119806-1 INSERT, SHEAR	13	
-	1	1	1	1	3-22280-3 SPRING, COMPRESSION	12	
-	1	1	1	1	1-356885-4 STOP, SHEAR	11	
-	1	1	1	1	2119805-1 SHEAR HOLDER, FRONT	10	
-	1	1	1	1	1803095-1 FLOATING SHEAR, FRONT	9	
-	1	1	1	1	9-1803318-6 ANVIL, COMBINATION	8	
-	1	1	1	1	240641-5 SPACER	7	
-	-	-	-	-	-	6	
-	1	1	1	1	2119757-4 DEPRESSOR, SHEAR	5	
-	1	1	1	1	5-238011-2 BLOCK, CRIMPER SPACER	4	
-	1	1	1	1	4-1803317-1 CRIMPER, INSULATION O	3	
-	1	1	1	1	455888-6 SPACER, CRIMPER	2	
-	1	1	1	1	7-1333281-3 CRIMPER, WIRE PREMIUM	1	

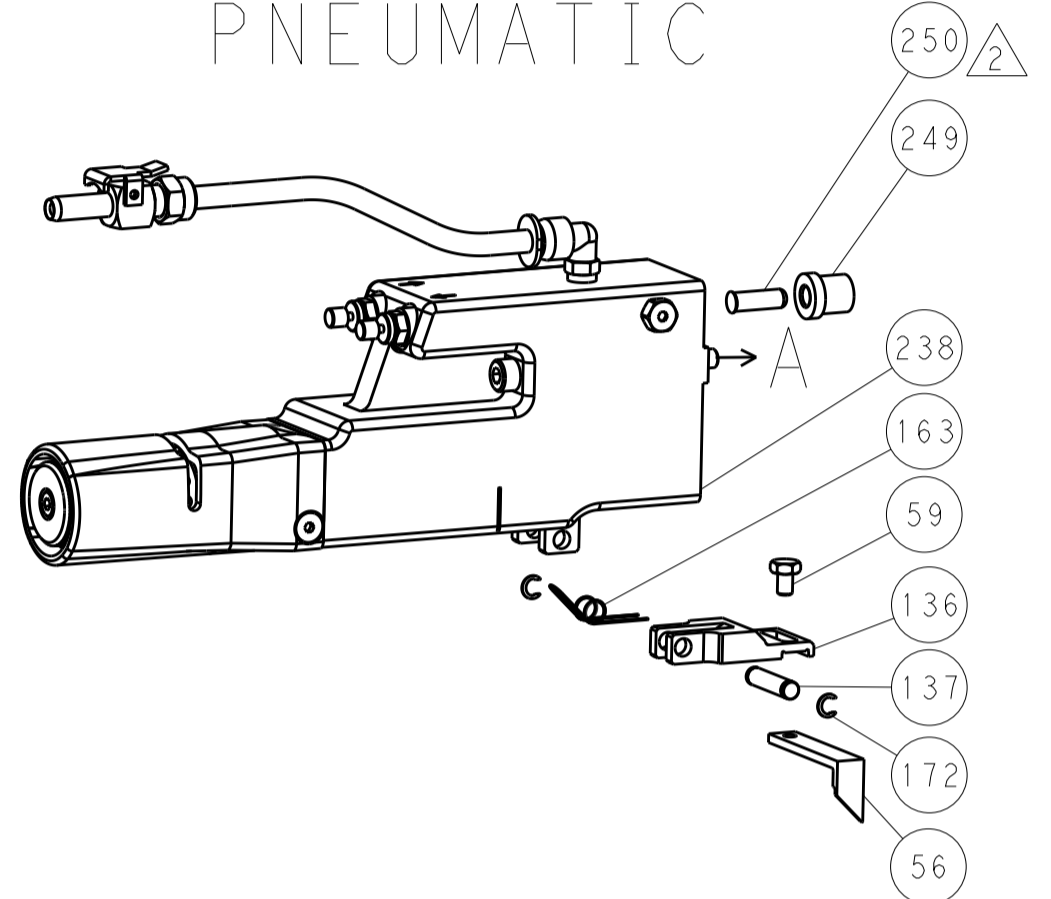
DIMENSIONS:		TOLERANCES UNLESS OTHERWISE SPECIFIED:		MATERIAL:		FINISH:		WEIGHT:		SCALE:	
mm	0 PLC	±									
	1 PLC	±									
	2 PLC	±									
	3 PLC	±									
	4 PLC	±									
	ANGLES	±									

LOC	DIST	REV	DATE	BY	APP'D
A	66				

# FEED TYPE MECHANICAL



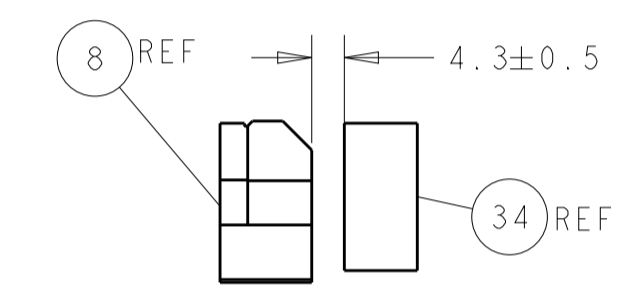
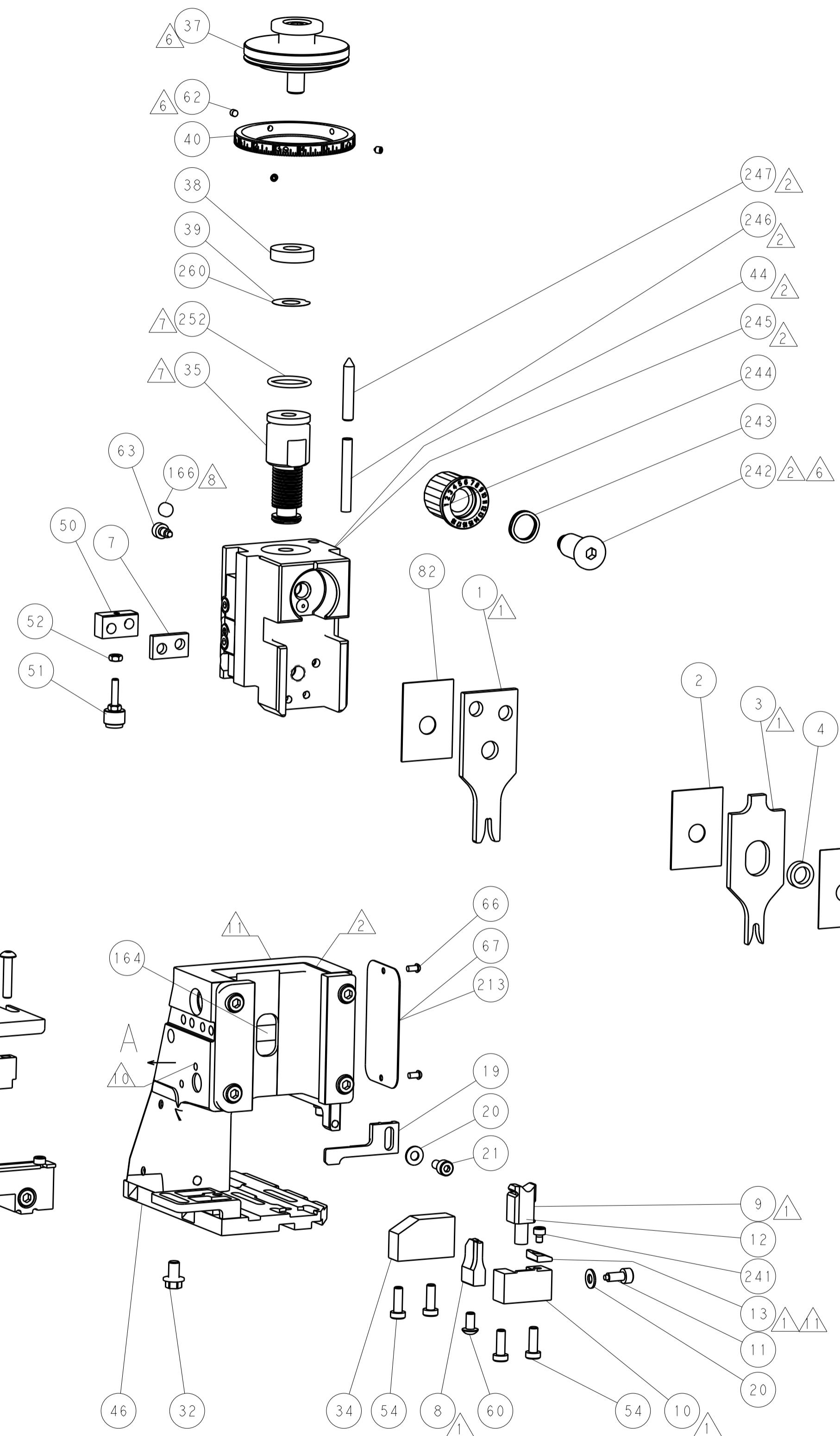
# PNEUMATIC



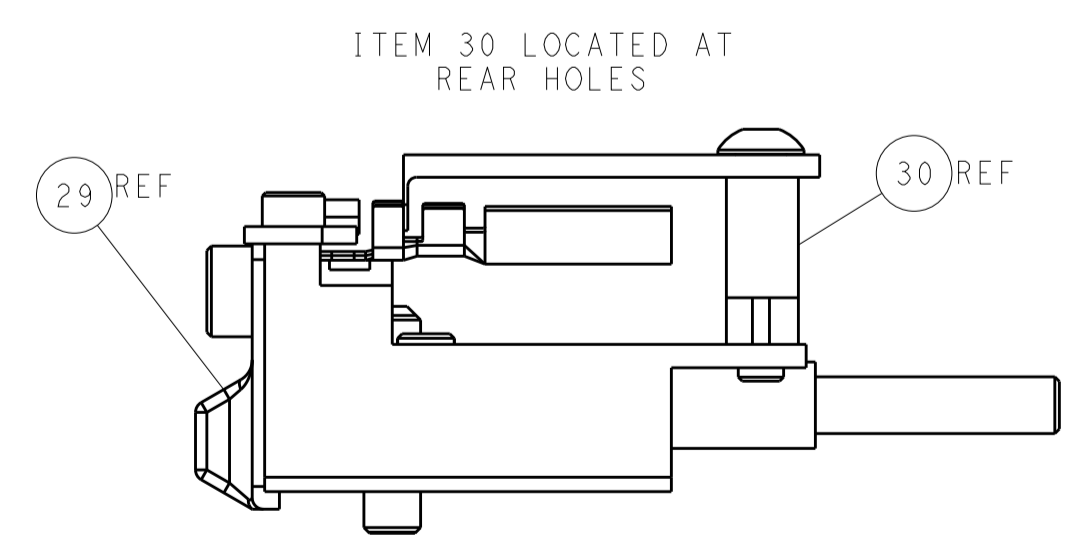
# SERVO LATCH PLATE



# CAM POSITIONS



TERMINAL SUPPORT LOCATION



FEED TRACK POSITION GUIDE BY INSULATION BARREL

**ATLANTIC VERSION**  
 Shown on sheets 1 of 4 & 2 of 4  
 (Pacific version shown on sheets 3 of 4 & 4 of 4)

DIMENSIONS: mm 		TOLERANCES UNLESS OTHERWISE SPECIFIED: 0 PLC ± 1 PLC ± 2 PLC ± 3 PLC ± 4 PLC ± ANGLES ±		DWN F. ZHANG 27MAR2018 CHK K. ZHANG 27MAR2018 APVD K. ZHANG 27MAR2018 NAME Ocean Side Feed Applicator SIZE CAGE CODE DRAWING NO. RESTRICTED TO A1 00779 ©=2837194 Customer Accessible Production Drawing SCALE 1:2 SHEET 2 OF 4 REV A	
MATERIAL:		FINISH:		WEIGHT:	

PACIFIC VERSION TERMINATOR INTERFACE ADAPTER	PART NUMBER	REVISION	DESCRIPTION	FEED TYPE	APPLICATOR STYLE CONVERSION CHART						
					CONVERT TO	PART NUMBERS REQUIRED					
	2-2837194-1	A	FINE CRIMP HEIGHT ADJUST	MECHANICAL	PNEUMATIC FEED	2119950-1	1338683-8	5-18022-5	2119641-2	2119799-1	2063440-1
					SERVO LATCH PLATE	2119951-1	-	8-2837194-5	1901094-3	-	2168400-6 (QUANTITY 2)
					SMART APPLICATOR	2161326-1	-	8-2837194-4	-	-	
	2-2837194-2	A	FINE CRIMP HEIGHT ADJUST	PNEUMATIC	MECHANICAL FEED	2119949-1	1338683-8	5-18022-5	2119653-2	-	-
					SERVO LATCH PLATE	2119951-1	-	8-2837194-5	1901094-3	-	2168400-6 (QUANTITY 2)
					SMART APPLICATOR	2161326-1	-	8-2837194-4	-	-	
	2-2837194-5	A	FINE CRIMP HEIGHT ADJUST	SERVO LATCH PLATE <sup>4</sup>	MECHANICAL FEED	2119949-1	1338683-8	5-18022-5	2119653-2	-	-
					PNEUMATIC FEED	2119950-1	1338683-8	5-18022-5	2119641-2	2119799-1	2063440-1
	2-2837194-7	A	FINE CRIMP HEIGHT ADJUST	NONE	-	-	-	-	-	-	-
	7-2837194-7	A	CRIMP TOOLING KIT	-	-	-	-	-	-	-	-

APPLICATOR DATA		
CRIMP	SIZE	TYPE
WIRE	3.02 mm [1.119]	F
INSUL	3.00 mm [1.118]	O
APPLICATOR INSTRUCTIONS 408-10389		

TERMINAL DATA: DELPHI TERMINAL	DELPHI PACKARD CRIMP SPECIFICATION
TERMINAL NAME: TAXI HES 2.4	TERMINAL, F
WIRE STRIP LENGTH 4.52-5.28 mm [1.178-.208 IN]	TERMINAL INSULATION DIAMETER RANGE Ø2.45-2.70 mm [1.096-.106 IN]
TERMINAL APPLICATION SPECIFICATION 13783289 CRIMP INFO SHEET-PGI Rev -	
TERMINALS APPLIED	
TE TERMINAL	DELPHI TERMINAL
3311152-1	13783289

WIRE SIZE	CRIMP HEIGHT mm [INCH]	CRIMP HEIGHT REFERENCE SETTING
2.00mm <sup>2</sup>	1.75+/-0.05 [1.069+/-0.02]	8.1

- RECOMMENDED SPARE PARTS
- GREASE BEARING SURFACES LIGHTLY
- 3. LUBRICATE DAILY PER THE APPLICATOR INSTRUCTION SHEET SUPPLIED WITH THE APPLICATOR.
- APPLICATOR SPECIFIC DATA TO BE ENTERED INTO BLANK MEMORY CHIP AT ASSEMBLY. SEE BELOW FOR PART NUMBER:  
 MECHANICAL FEED WITH "SMART APPLICATOR" CONVERSION: 8-2837194-4  
 PNEUMATIC FEED WITH "SMART APPLICATOR" CONVERSION: 8-2837194-4  
 SERVO FEED WITH "FINE CRIMP HEIGHT ADJUST": 8-2837194-5
- 5. ADJUSTMENT OF THE STRIPPER MAY BE REQUIRED WHEN MOVING THE APPLICATOR BETWEEN BENCH AND LEADMAKER APPLICATIONS.
- APPLY PART NUMBER 1-23419-5 LOCTITE TO THREADS OF ITEM 62.  
 APPLY PART NUMBER 2-23419-6 LOCTITE TO THREADS OF ITEM 242.
- GREASE THREADS, GROOVE AND O-RING ON ITEMS 139 & 152.
- MAGNET MUST BE ORIENTED CORRECTLY IN ORDER TO PROPERLY ACTUATE THE COUNTER.
- CRIMP HEIGHT REFERENCE SETTING WAS THE SETTING USED WHEN THE APPLICATOR WAS QUALIFIED AT THE FACTORY. ADJUSTMENT MAY BE NECESSARY WHEN RUNNING APPLICATOR IN THE FIELD.
- SPARE FEED CAM STORAGE LOCATION REFER TO INSTRUCTION SHEET FOR ADDITIONAL INFORMATION.
- TO CONVERT THE APPLICATOR TO A NON-CARRIER CUTTING STYLE, REMOVE ITEM 13 AND ATTACH TO THE LOCATION ON BACK SIDE OF THE HOUSING. REFER TO INSTRUCTION SHEET FOR ADDITIONAL INFORMATION.

**\*WARNING**  
 ON INSTALLATION, SET WIRE DISC, ITEM 40 TO LARGEST WIRE SIZE SETTING. USE OF SETTINGS BELOW MINIMUM REQUIRED CRIMP HEIGHT SETTING WILL CAUSE DAMAGE TO CRIMP TOOLING.

**PACIFIC VERSION**  
 Shown on sheets 3 of 4 & 4 of 4  
 (Atlantic version shown on sheets 1 of 4 & 2 of 4)

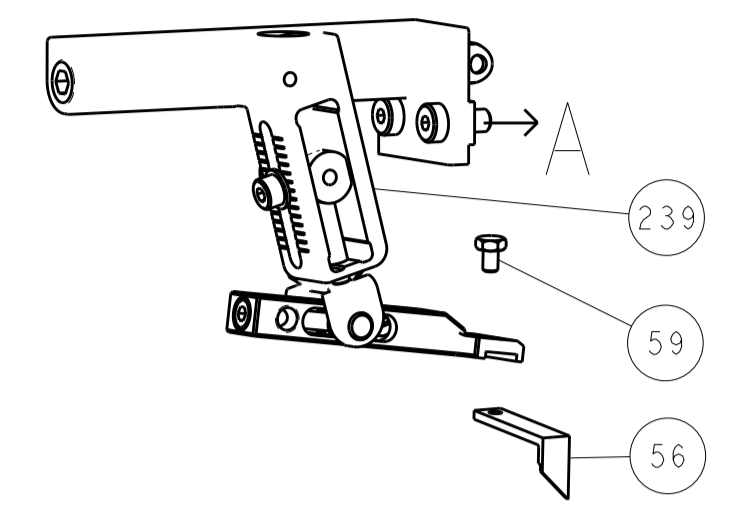
SET UP GAUGE	LOC	DIST	REVISIONS			
2119599-1	A	66	P	L	D	APVD
			DESCRIPTION			
			DATE			
			OWN			
			APVD			

-	1	1	1	1	2119782-1	FINE ADJUST HEAD ASM, PACIFIC STYLE	251
-	-	-	1	-	2119640-1	PUSH ROD, AIR FEED	250
-	-	-	1	-	1803259-1	BUSHING, FLANGED	249
-	1	1	1	1	1-22279-3	SPRING, COMPRESSION	246
-	1	1	1	1	2119082-4	CAM, SNAIL, INSULATION ADJUSTMENT	244
-	1	1	1	1	2079764-1	WASHER, WAVE SPRING, CREST-TO-CREST	243
	1	1	1	1	2119083-1	RETAINER, INSULATION DIAL	242
-	1	1	1	1	7-18023-7	SCR, SKT HD CAP M3 X 4.0	241
-	-	2	-	-	2168400-6	SHCS, LOW HEAD, RoHS, M5 X 16	240
-	-	-	-	1	2119580-1	MECHANICAL FEED ASSEMBLY	239
-	-	-	1	-	2063440-1	AIR FEED MODULE	238
-	-	1	-	-	2119740-2	TAG, IDENTIFICATION	213
-	-	1	-	-	1901094-3	SPACER, FEEDER	198
-	-	-	2	-	21045-3	RING, RETAIN, EXTERN, 3/16 CRESCENT	172
-	1	1	1	1	994969-1	MAGNET, RARE EARTH HIGH ENERGY	166
-	REF	REF	REF	REF	994970-2	COUNTER, MAGNETIC	164
-	-	-	1	-	240638-1	SPRING, FEED FINGER	163
	1	1	1	1	8-21084-1	O-RING, .801 ID, .070 DIA. MAT.	152
-	-	-	1	-	2119641-2	FEED CAM, AIR FEED	151
-	1	1	1	1	2119798-2	DETENT PIN	145
-	1	1	1	1	2079383-8	SCR, BHSC, RoHS (M4 X 16)	144
-	4	4	4	4	2168400-5	SHCS, LOW HEAD, RoHS, M4 X 20	143
-	-	-	-	1	2119653-2	FEED CAM, POST FEED	142
-	1	1	1	1	1-2119656-0	APPLICATOR BASIC ASSEMBLY, SF	141
	1	1	1	1	2119650-1	RAM, ASIAN STYLE, SIDE FEED	140
-	1	1	1	1	2119092-2	BOLT, ADJUSTMENT	139
-	-	-	1	-	3-23627-7	PIN, RETAIN, GRVD, 3/16 X .854	137
-	-	-	1	-	2119799-1	HOLDER, FEED FINGER, AF	136
-	-	REF	-	-	SEE NOTE 4	MEMORY CHIP, PROGRAMMED	135
-	-	1	-	-	1633743-1	SERVO FEED LATCH ASM	133
-	-	REF	-	-	2119944-1	FEED FINGER ASSEMBLY, SF	117
-	1	1	1	1	455888-6	SPACER, CRIMPER	82
-	1	1	1	1	2119956-1	DOCUMENTATION PACKAGE	71
-	1	-	1	1	2119740-1	TAG, IDENTIFICATION	67
	2	2	2	2	2168078-1	SCREW, DRIVE, RH, RoHS, 2 x .188	66
-	1	1	1	1	2119793-1	LIMITER, ADJUSTMENT BOLT	63
	3	3	3	3	992763-5	SCR, SET, SOC, CONE PNT, M3 X 4.0	62
-	-	-	1	1	5-18022-5	SCR, HEX HD CAP, M4 X 6.0	59
-	-	-	1	1	1338683-8	FEED PAWL	56
-	2	2	2	2	2168083-8	SCR, SKT HD CAP, RoHS, M4 X 16	53
-	1	1	1	1	5018030-1	NUT, HEX, REG, RoHS, M3	52
-	1	1	1	1	811242-5	BUMPER, HOLD DOWN	51
-	1	1	1	1	690753-2	SPACER, TONKER	50
-	-	-	1	2	18023-9	SCR, SKT HD CAP M4 X 6.0	49
-	-	-	-	1	2119652-1	FEED CAM, PRE FEED	48
-	1	1	1	1	2079383-7	SCR, BHSC, RoHS (M8 X 25)	41
-	1	1	1	1	2119645-1	DISC, NUMBERED FA WIRE ADJUSTMENT	40
-	1	1	1	1	2119957-1	APPLICATOR SHIM PACK	39
-	1	1	1	1	2119644-2	RAM WASHER, PRECISION	38
-	1	1	1	1	1752356-1	SUPPORT, TERMINAL	34
-	2	2	2	2	2079383-5	SCR, BHSC, RoHS (M4 X 20)	33
-	1	1	1	1	2161328-1	HEX HEAD, FLANGED, M5 X 8mm LONG	32
-	1	1	1	1	1-1320908-0	SPACER, STRIP GUIDE	30
-	1	1	1	1	2119959-1	ASSEMBLY, STRIP GUIDE	29
-	1	1	1	1	455888-3	SPACER, CRIMPER	28
-	1	1	1	1	1320928-6	STRIP GUIDE	24
-	1	1	1	1	2168083-2	SCR, SKT HD CAP, RoHS, M4 X 8.0	21
-	2	2	2	2	1-18028-2	WASHER, FLAT, REG M4	20
-	1	1	1	1	2119533-1	STRIPPER, SIDE FEED	19
	1	1	1	1	2119806-1	INSERT, SHEAR	13
-	1	1	1	1	3-22280-3	SPRING, COMPRESSION	12
-	1	1	1	1	1-356885-4	STOP, SHEAR	11
	1	1	1	1	2119805-1	SHEAR HOLDER, FRONT	10
	1	1	1	1	1803095-1	FLOATING SHEAR, FRONT	9
	1	1	1	1	9-1803318-6	ANVIL, COMBINATION	8
-	1	1	1	1	240641-5	SPACER	7
-	-	-	-	-	-	-	6
-	1	1	1	1	2119757-4	DEPRESSOR, SHEAR	5
-	1	1	1	1	5-238011-2	BLOCK, CRIMPER SPACER	4
	1	1	1	1	4-1803317-1	CRIMPER, INSULATION O	3
-	1	1	1	1	455888-6	SPACER, CRIMPER	2
	1	1	1	1	7-1333281-3	CRIMPER, WIRE PREMIUM	1
-77	-27	-25	-22	-21	PART NO	DESCRIPTION	ITEM NO

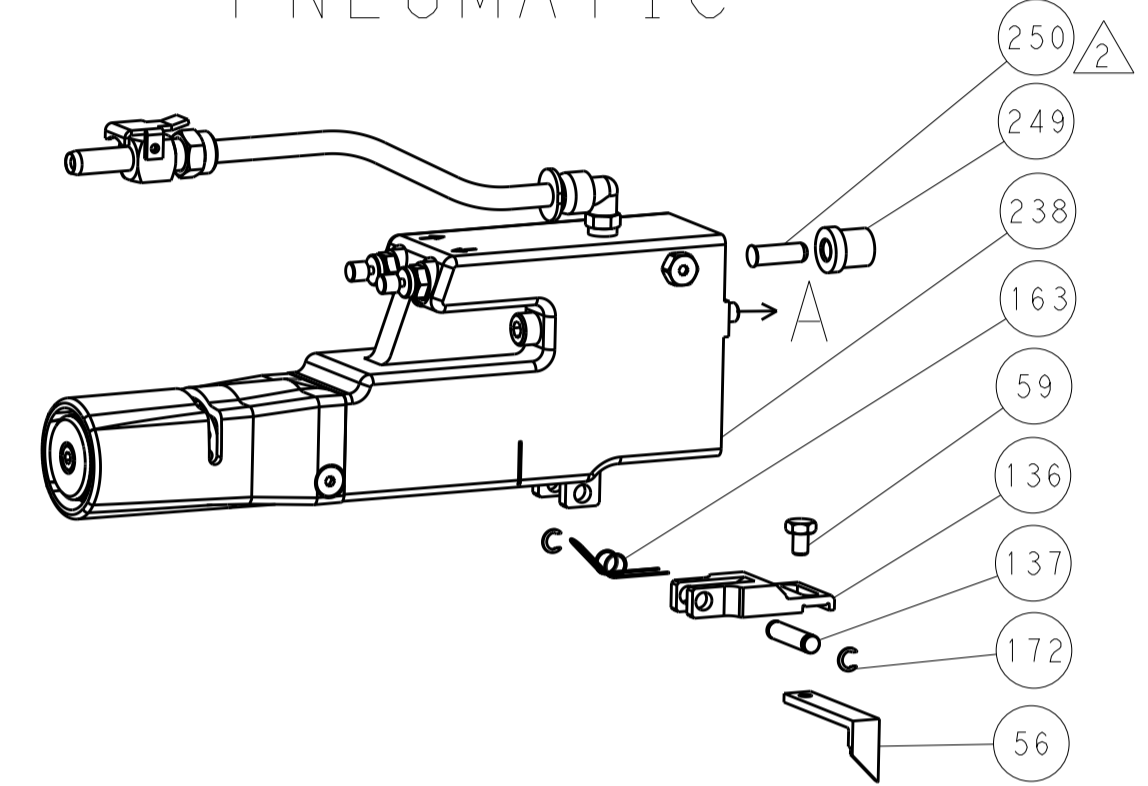
DIMENSIONS:		TOLERANCES UNLESS OTHERWISE SPECIFIED:		OWN	F. ZHANG	27MAR2018	TE Connectivity Harrisburg, PA 17105-3608
mm		0 PLC ± 1 PLC ± 2 PLC ± 3 PLC ± 4 PLC ± ANGLES ±		CHK	K. ZHANG	27MAR2018	
MATERIAL:		FINISH:		APVD	F. ZHANG	27MAR2018	NAME
				PRODUCT SPEC		Ocean Side Feed Applicator	
				APPLICATION SPEC		SIZE	
				WEIGHT		CAGE CODE DRAWING NO	
				SCALE		RESTRICTED TO	
				SHEET		3 OF 4	
				REV		A	

LOC		DIST		REVISIONS			
A	66	P	LTM	DESCRIPTION	DATE	DWN	APVD
		-		SEE SHEET 1			

# FEED TYPE MECHANICAL



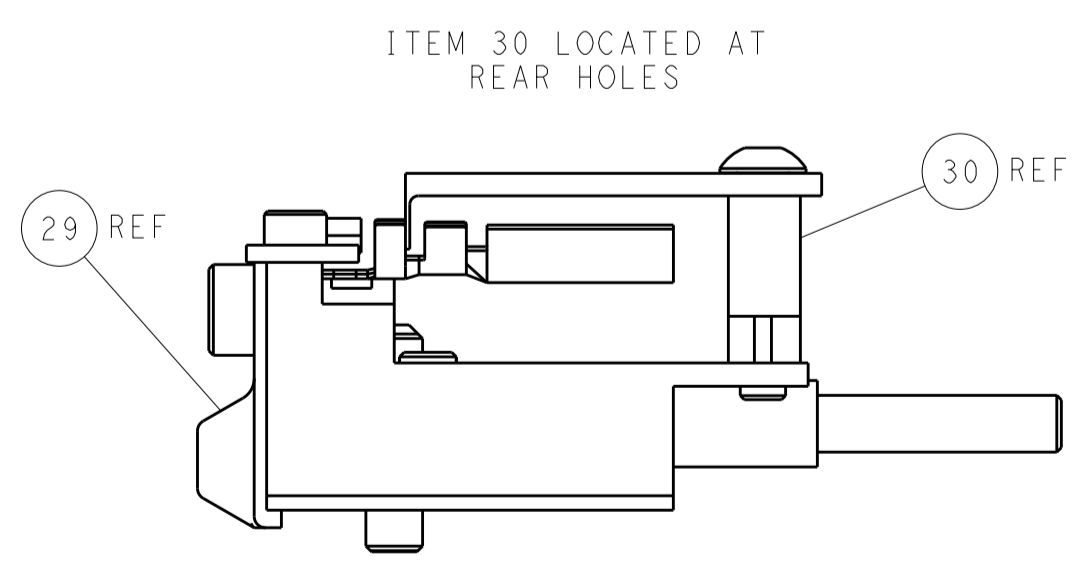
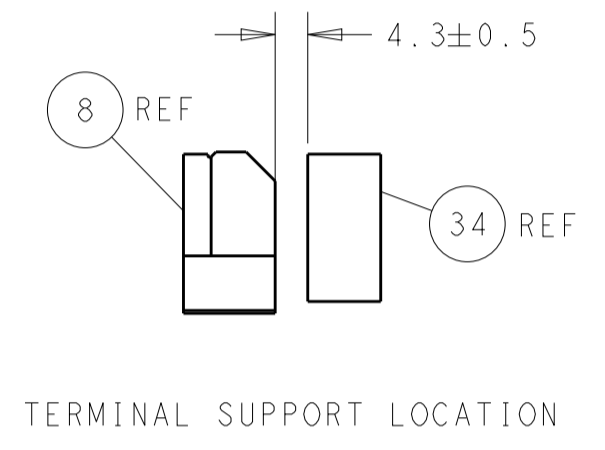
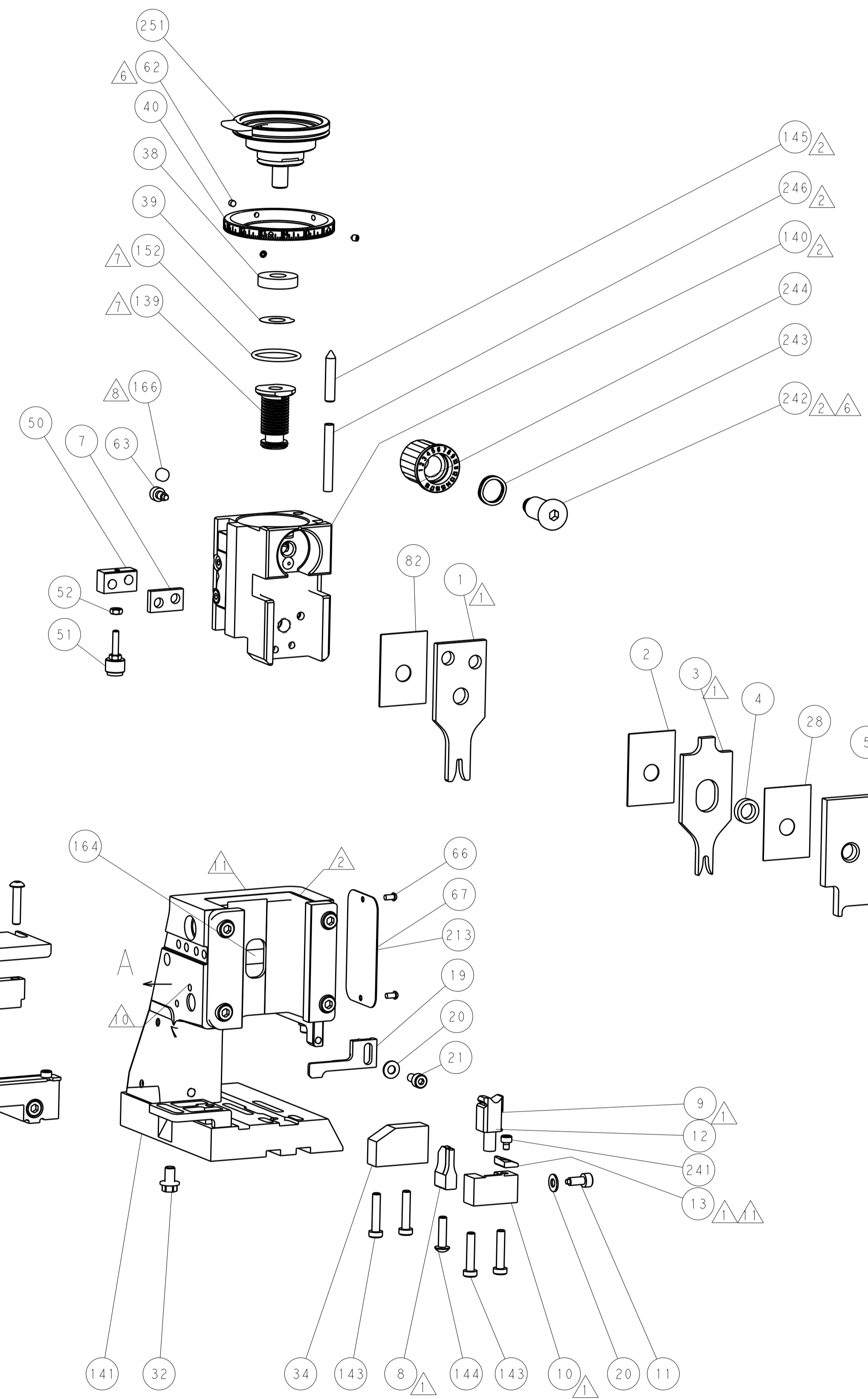
# PNEUMATIC



# SERVO LATCH PLATE



# CAM POSITIONS



**PACIFIC VERSION**  
 Shown on sheets 3 of 4 & 4 of 4  
 (Atlantic version shown on sheets 1 of 4 & 2 of 4)

DIMENSIONS:		TOLERANCES UNLESS OTHERWISE SPECIFIED:		DWN F. ZHANG 27MAR2018		STE TE Connectivity	
mm	0 PLC ±	1 PLC ±	2 PLC ±	3 PLC ±	4 PLC ±	Harrisburg, PA 17105-3608	
MATERIAL:		FINISH:		CHK K. ZHANG 27MAR2018		NAME Ocean Side Feed Applicator	
				APVD K. ZHANG 27MAR2018		PRODUCT SPEC	
						APPLICATION SPEC	
						SIZE CAGE CODE DRAWING NO RESTRICTED TO	
						A 00779 C=2837194	
						Customer Accessible Production Drawing SCALE 1:2 SHEET 4 OF 4 REV A	