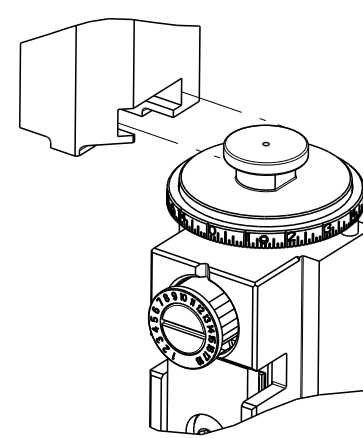


PART NUMBER	REVISION	DESCRIPTION	FEED TYPE
2837130-2	C	FINE CRIMP HEIGHT ADJUST	PNEUMATIC
7-2837130-2	C	PNEUMATIC AND CRIMP TOOLING KIT	PNEUMATIC
7-2837130-7	A	CRIMP TOOLING KIT	-

ATLANTIC VERSION TERMINATOR INTERFACE ADAPTER

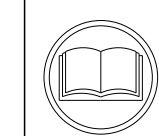


APPLICATOR DATA		
CRIMP	SIZE	TYPE
WIRE	1.90 mm [.075]	F
INSUL	2.45 mm [.096]	OV

APPLICATOR INSTRUCTIONS 408-35042

TERMINAL DATA: YAZAKI TERMINAL YAZAKI CRIMP SPECIFICATION			
TERMINAL NAME: MF-H-SN TERMINAL			
WIRE STRIP LENGTH		TERMINAL INSULATION DIAMETER RANGE	
5.00-6.00 mm [.197-.236 IN]		∅1.40-2.10 mm [.055-.083 IN]	
TERMINAL APPLICATION SPECIFICATION		72-WT10-1978 Rev WA2144A	-
TERMINALS APPLIED			
TE TERMINAL	YAZAKI TERMINAL	TE TERMINAL	YAZAKI TERMINAL
3311100-1	7116-2927-02	3311100-2	7116-2990-02

WIRE SIZE	CRIMP HEIGHT mm [INCH]	CRIMP HEIGHT REFERENCE SETTING
0.50mm2	1.10+/-0.05 [.043+/-0.002]	7.3
0.35mm2	1.05+/-0.05 [.041+/-0.002]	8.4
0.30mm2	1.05+/-0.05 [.041+/-0.002]	7.9



- RECOMMENDED SPARE PARTS
- REFER TO SUPPLIED INSTRUCTION SHEET FOR CLEANING, LUBRICATION AND STORAGE OF APPLICATOR.
- APPLY PART NUMBER 2-23419-6 LOCTITE TO THREADS OF ITEM 242.
- CRIMP HEIGHT REFERENCE SETTING WAS THE SETTING USED WHEN THE APPLICATOR WAS QUALIFIED AT THE FACTORY. ADJUSTMENT MAY BE NECESSARY WHEN RUNNING APPLICATOR IN THE FIELD.
- 5. UNLESS SPECIFIED OTHERWISE TORQUE VALUES SHALL BE USED PER DOCUMENT, 101-35000.
- TERMINAL PITCH NOT COMPATIBLE WITH MECHANICAL FEED.

**\*WARNING**  
ON INSTALLATION, SET WIRE DISC TO CRIMP HEIGHT REFERENCE SETTING FOR LARGEST WIRE SIZE. CRIMP HEIGHT REFERENCE SETTINGS GREATER THAN THE VALUE SHOWN MAY CAUSE DAMAGE TO THE CRIMP TOOLING. REFER TO THE INSTRUCTION SHEET FOR PROPER SETUP AND ADJUSTMENTS.

LOC	DIST	REVISIONS			
A	66	REV	DATE	BY	APPV
		A	RELEASE	09MAY2018	AW TE
		B	ECR-19-004943	27MAR2019	TB CT
		C	ECR-20-016082	11NOV2020	LG RK
		C1	ECR-21-001169	28JAN2021	TB TE

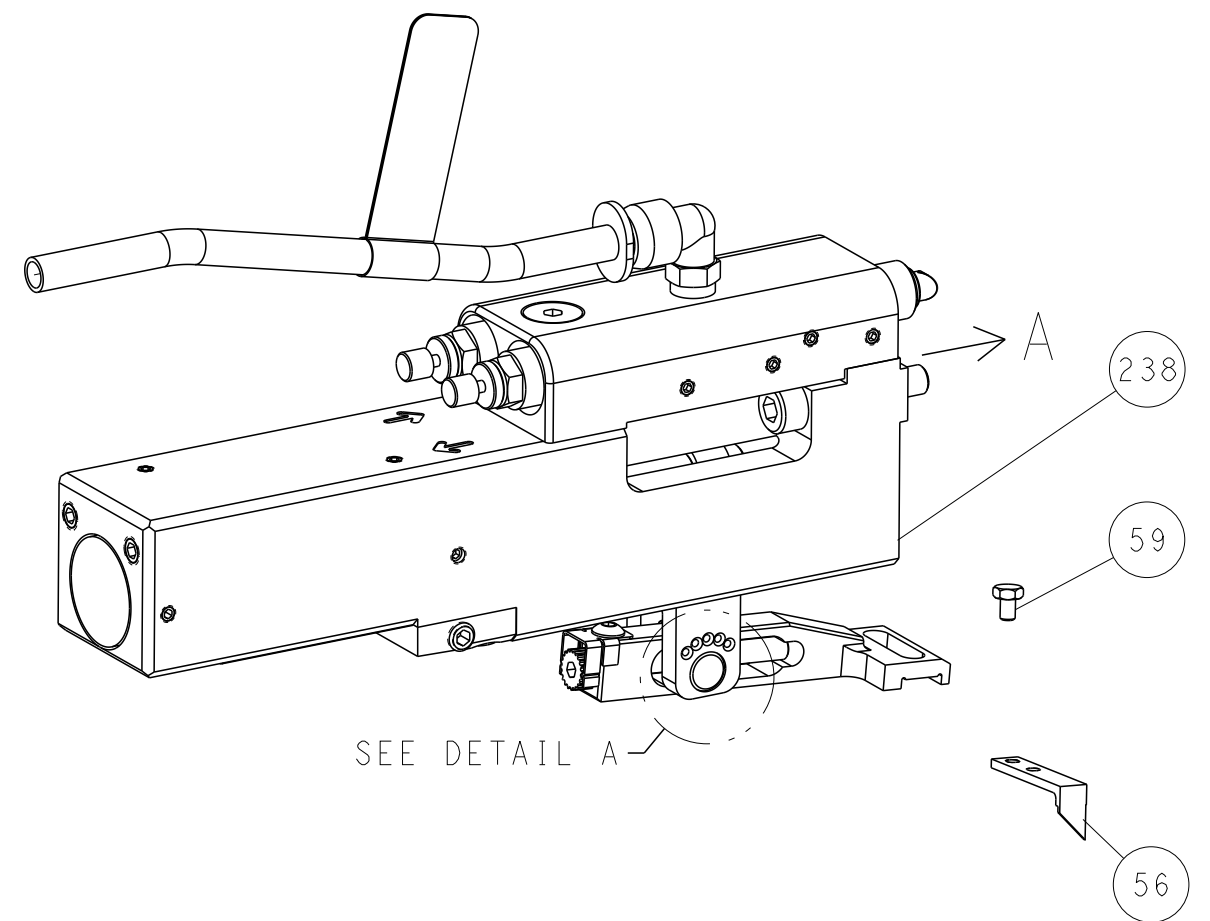
-	1	1	2119641-1	FEED CAM, AIR FEED	248
-	1	1	2119082-8	CAM, SNAIL, INSULATION ADJUSTMENT	244
-	1	1	2079764-1	WASHER, WAVE SPRING, CREST-TO-CREST	243
-	1	1	2119083-1	RETAINER, INSULATION DIAL	242
-	1	1	7-18023-7	SCR, SKT HD CAP M3 X 4.0	241
-	1	1	2844940-2	AIR FEED MODULE	238
-	REF	REF	994970-2	COUNTER, MAGNETIC	164
-	1	1	2844908-1	SCREW, LOCKING	99
-	1	1	2844907-1	POST, LOCKING	98
-	1	1	455888-4	SPACER, CRIMPER	82
-	1	1	1803607-3	DOCUMENTATION PACKAGE	71
-	1	1	2119740-1	TAG, IDENTIFICATION	67
-	2	2	2168078-1	SCREW, DRIVE, RH, RoHS, 2 x .188	66
-	1	1	2168083-2	SCR, SKT HD CAP, RoHS, M4 X 8.0	60
-	1	1	5-18022-5	SCR, HEX HD CAP, M4 X 6.0	59
-	1	1	1338685-1	PAWL, FEED	56
-	4	4	2168083-3	SCR, SKT HD CAP, RoHS, M4 X 12.0	54
-	2	2	1-2168083-0	SCR, SKT HD CAP, RoHS, M4 X 10	53
-	1	1	1803382-6	HOLD DOWN, SPRING LOADED	50
-	1	1	18023-9	SCR, SKT HD CAP M4 X 6.0	49
-	1	1	1803583-9	APPLICATOR BASIC ASSEMBLY, SF	46
-	1	1	1803515-1	RAM ASSEMBLY, SF ATLANTIC	44
-	1	1	1803602-1	SCR, BHSC, RoHS (M8 X 25)	41
-	1	1	1752356-3	SUPPORT, TERMINAL	34
-	2	2	2079383-5	SCR, BHSC, RoHS (M4 X 20)	33
-	2	2	2-2844962-6	SPACER, CYLINDRICAL, STRIP GUIDE	30
-	1	1	2844992-1	ASSEMBLY, STRIP GUIDE	29
-	1	1	455888-5	SPACER, CRIMPER	28
-	1	1	1320928-2	STRIP GUIDE	24
-	1	1	2168083-2	SCR, SKT HD CAP, RoHS, M4 X 8.0	21
-	2	2	1-18028-2	WASHER, FLAT, REG M4	20
-	1	1	2119533-1	STRIPPER, SIDE FEED	19
-	1	1	2119806-1	INSERT, SHEAR	13
-	1	1	3-22280-3	SPRING, COMPRESSION	12
-	1	1	1-356885-4	STOP, SHEAR	11
-	1	1	2119805-1	SHEAR HOLDER, FRONT	10
-	1	1	1803095-6	FLOATING SHEAR, FRONT	9
-	1	2	1-1803537-6	ANVIL, COMBINATION	8
-	-	-	-	-	7
-	-	-	-	-	6
-	1	1	2119757-6	DEPRESSOR, SHEAR	5
-	1	1	5-238011-2	BLOCK, CRIMPER SPACER	4
-	1	2	4-1803199-1	CRIMPER, INSULATION OVERLAP PREMIUM	3
-	1	1	455888-3	SPACER, CRIMPER	2
-	1	2	8-568176-0	CRIMPER, WIRE	1

ATLANTIC VERSION  
Shown on sheets 1 of 4 & 2 of 4  
(Pacific version shown on sheets 3 of 4 & 4 of 4)

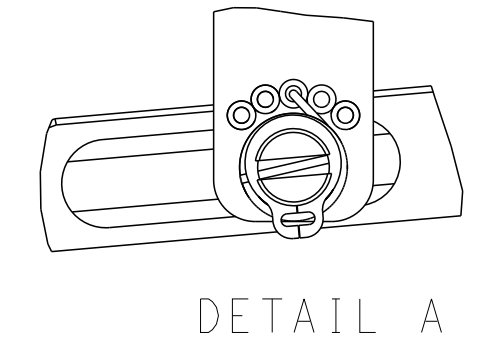
DIMENSIONS: mm		TOLERANCES UNLESS OTHERWISE SPECIFIED:		DWG: B. WEAVER 21FEB2018		TE Connectivity Harrisburg, PA 17105-3608	
0 PLC ±		1 PLC ±		CHK: T. ELBIN 21FEB2018		NAME: Ocean Side Feed Applicator	
2 PLC ±		3 PLC ±		APVD: T. ELBIN 21FEB2018		SIZE: A1	
4 PLC ±		ANGLES ±		PRODUCT SPEC		CAGE CODE: 00779	
MATERIAL		FINISH		APPLICATION SPEC		DRAWING NO: 2837130	
				WEIGHT		SCALE: 1:2	
				RESTRICTED TO		SHEET 1 OF 4	
				Customer Accessible Production Drawing		REV: C1	

LOC	DIST	REVISIONS					
		P	LTN	DESCRIPTION	DATE	OWN	APVD
A	66	-	-	SEE SHEET 1	-	-	-

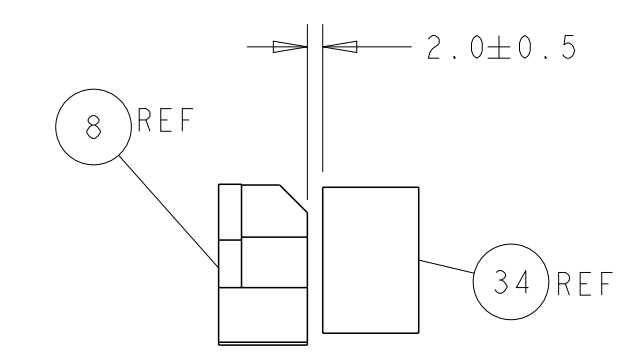
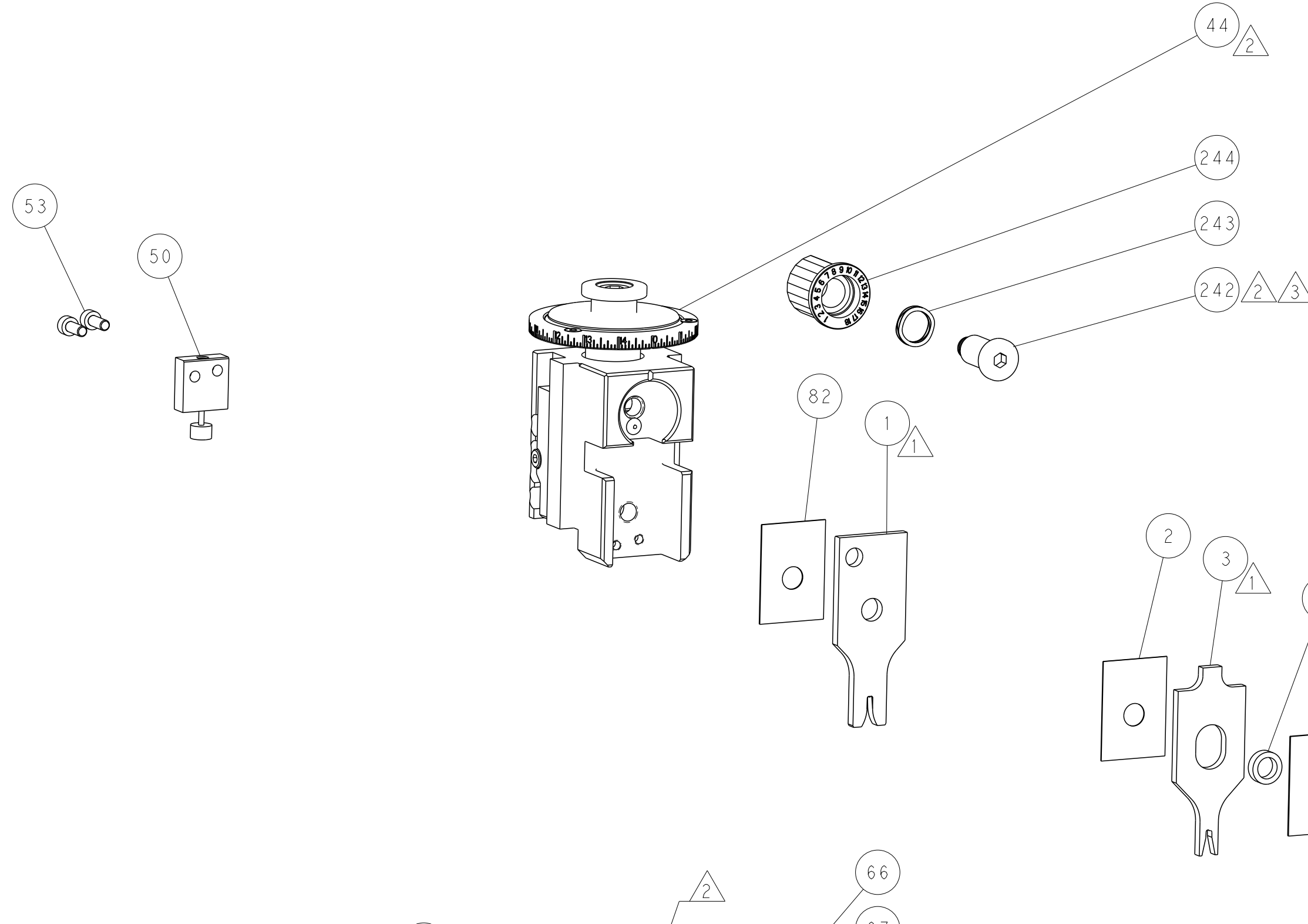
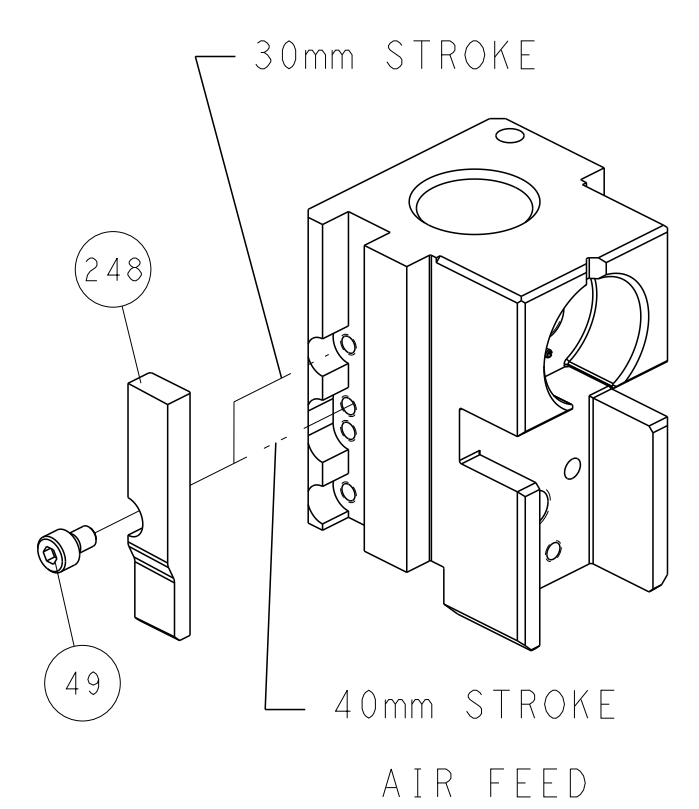
### FEED TYPE PNEUMATIC



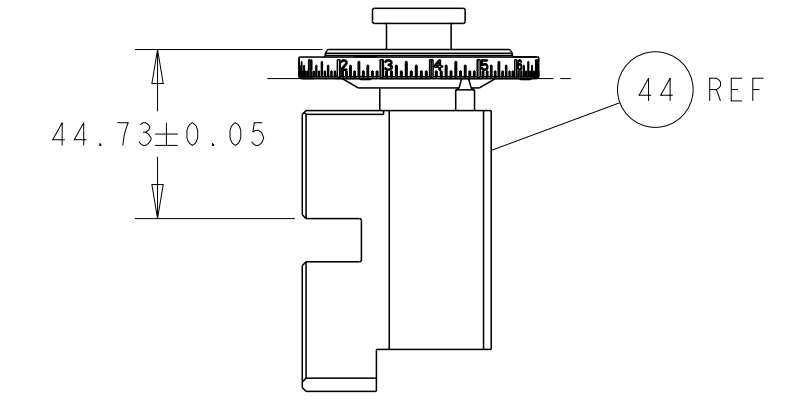
### FEED SPRING SETTING POSITION (SHOWN FROM REAR SIDE)



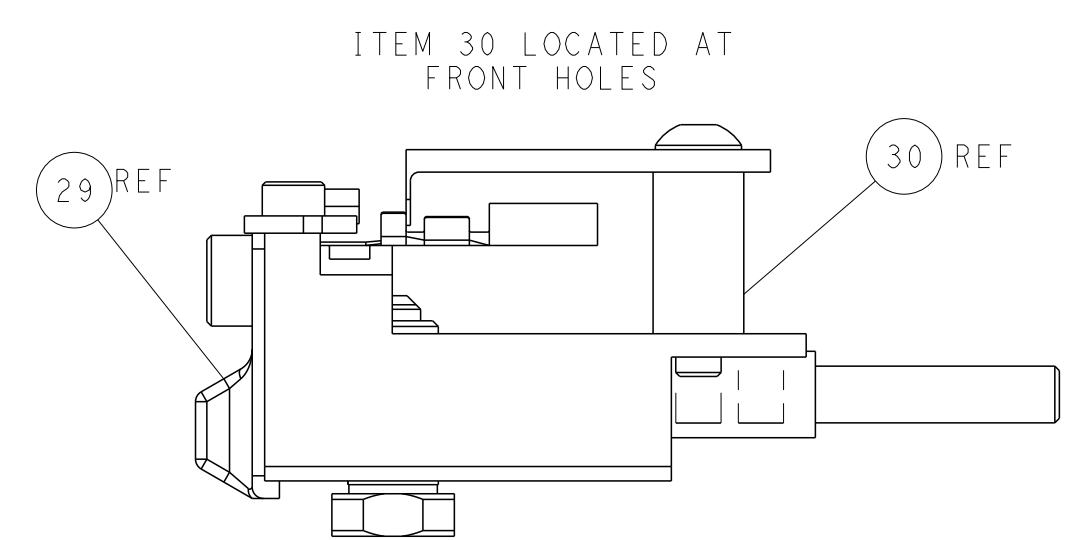
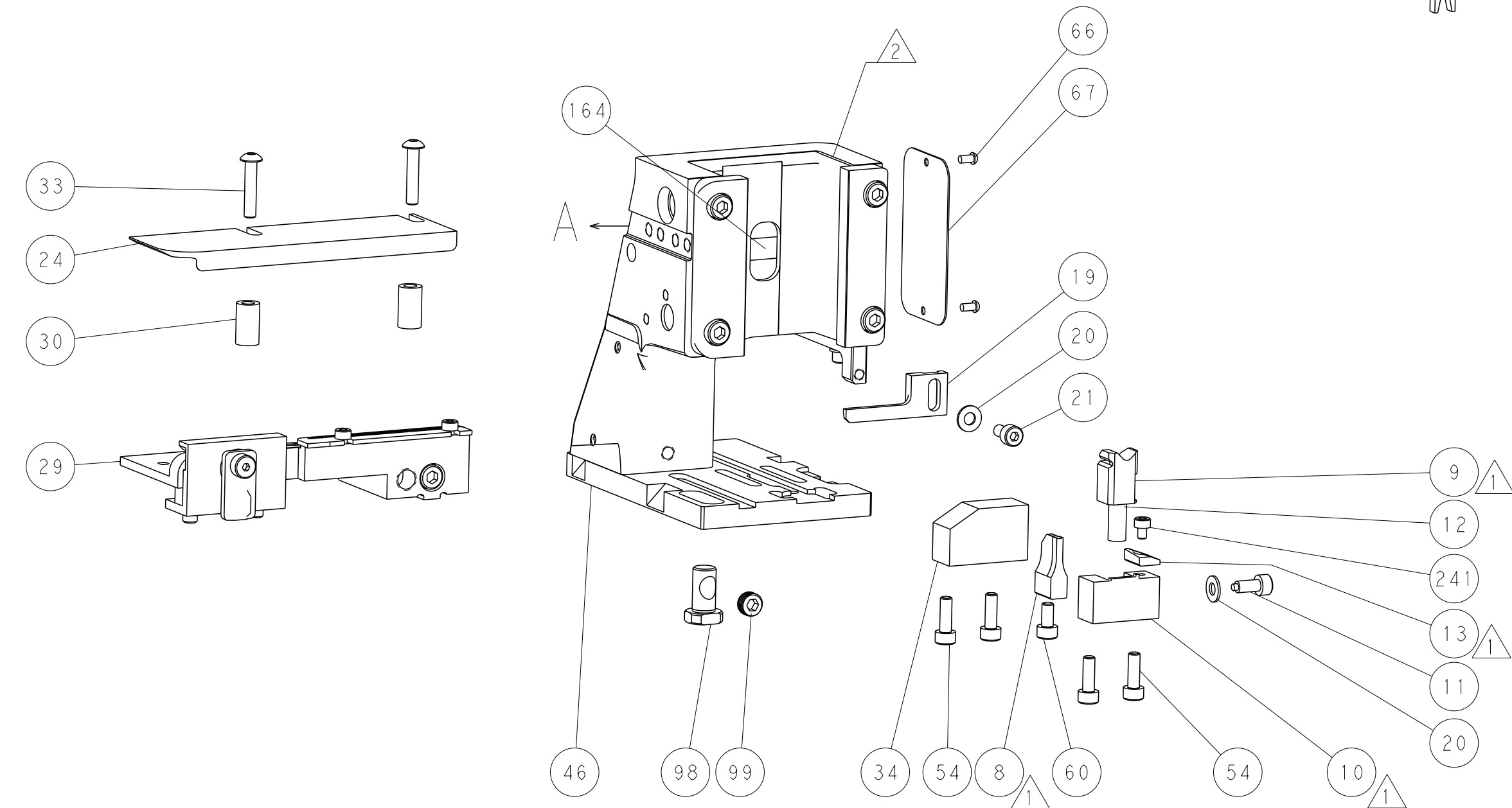
### CAM POSITION



TERMINAL SUPPORT LOCATION



RAM SET-UP



FEED TRACK POSITION  
GUIDE BY INSULATION BARREL

**ATLANTIC VERSION**  
 Shown on sheets 1 of 4 & 2 of 4  
 (Pacific version shown on sheets 3 of 4 & 4 of 4)

<small>THIS DRAWING IS UNPUBLISHED. RELEASED FOR PUBLICATION 2018. COPYRIGHT 2018 BY TYCO ELECTRONICS CORPORATION. ALL RIGHTS RESERVED.</small>		DWN B. WEAVER 21FEB2018 CHK T. ELBIN 21FEB2018 APVD T. ELBIN 21FEB2018	TE Connectivity Harrisburg, PA 17105-3608
DIMENSIONS: mm TOLERANCES UNLESS OTHERWISE SPECIFIED: 0 PLC ± 1 PLC ± 2 PLC ± 3 PLC ± 4 PLC ± ANGLES ± FINISH ±		NAME Ocean Side Feed Applicator PRODUCT SPEC APPLICATION SPEC SIZE CAGE CODE DRAWING NO WEIGHT A1 00779 C=2837130	RESTRICTED TO SCALE 1:2 SHEET 2 OF 4 REV C1
MATERIAL:		Customer Accessible Production Drawing	

PART NUMBER	REVISION	DESCRIPTION	FEED TYPE
2-2837130-2	C	FINE CRIMP HEIGHT ADJUST	PNEUMATIC
7-2837130-7	A	CRIMP TOOLING KIT	-

PACIFIC VERSION TERMINATOR  
 INTERFACE ADAPTER



APPLICATOR DATA		
CRIMP	SIZE	TYPE
WIRE	1.90 mm [.075]	F
INSUL	2.45 mm [.096]	OV
APPLICATOR INSTRUCTIONS 408-35042		

TERMINAL DATA: YAZAKI TERMINAL YAZAKI CRIMP SPECIFICATION	
TERMINAL NAME: MF-H-SN TERMINAL	
WIRE STRIP LENGTH 5.00-6.00 mm [1.97-.236 IN]	TERMINAL INSULATION DIAMETER RANGE Ø1.40-2.10 mm [.055-.083 IN]
TERMINAL APPLICATION SPECIFICATION 72-WT10-1978 Rev WA2144A	
TERMINALS APPLIED	
TE TERMINAL	YAZAKI TERMINAL
3311100-1	7116-2927-02
TE TERMINAL	YAZAKI TERMINAL
3311100-2	7116-2990-02

WIRE SIZE	CRIMP HEIGHT mm [INCH]	CRIMP HEIGHT REFERENCE SETTING
0.50mm2	1.10 +/- 0.05 [1.043 +/- .002]	7.3
0.35mm2	1.05 +/- 0.05 [1.041 +/- .002]	8.4
0.30mm2	1.05 +/- 0.05 [1.041 +/- .002]	7.9

- RECOMMENDED SPARE PARTS
- REFER TO SUPPLIED INSTRUCTION SHEET FOR CLEANING, LUBRICATION AND STORAGE OF APPLICATOR.
- APPLY PART NUMBER 2-23419-6 LOCTITE TO THREADS OF ITEM 242.
- CRIMP HEIGHT REFERENCE SETTING WAS THE SETTING USED WHEN THE APPLICATOR WAS QUALIFIED AT THE FACTORY. ADJUSTMENT MAY BE NECESSARY WHEN RUNNING APPLICATOR IN THE FIELD.
- UNLESS SPECIFIED OTHERWISE TORQUE VALUES SHALL BE USED PER DOCUMENT, 101-35000.
- TERMINAL PITCH NOT COMPATIBLE WITH MECHANICAL FEED.

**\*WARNING**  
 ON INSTALLATION, SET WIRE DISC TO CRIMP HEIGHT REFERENCE SETTING FOR LARGEST WIRE SIZE. CRIMP HEIGHT REFERENCE SETTINGS GREATER THAN THE VALUE SHOWN MAY CAUSE DAMAGE TO THE CRIMP TOOLING. REFER TO THE INSTRUCTION SHEET FOR PROPER SETUP AND ADJUSTMENTS.

LOC	DIST	REV	DATE	BY	APPV
A	66				

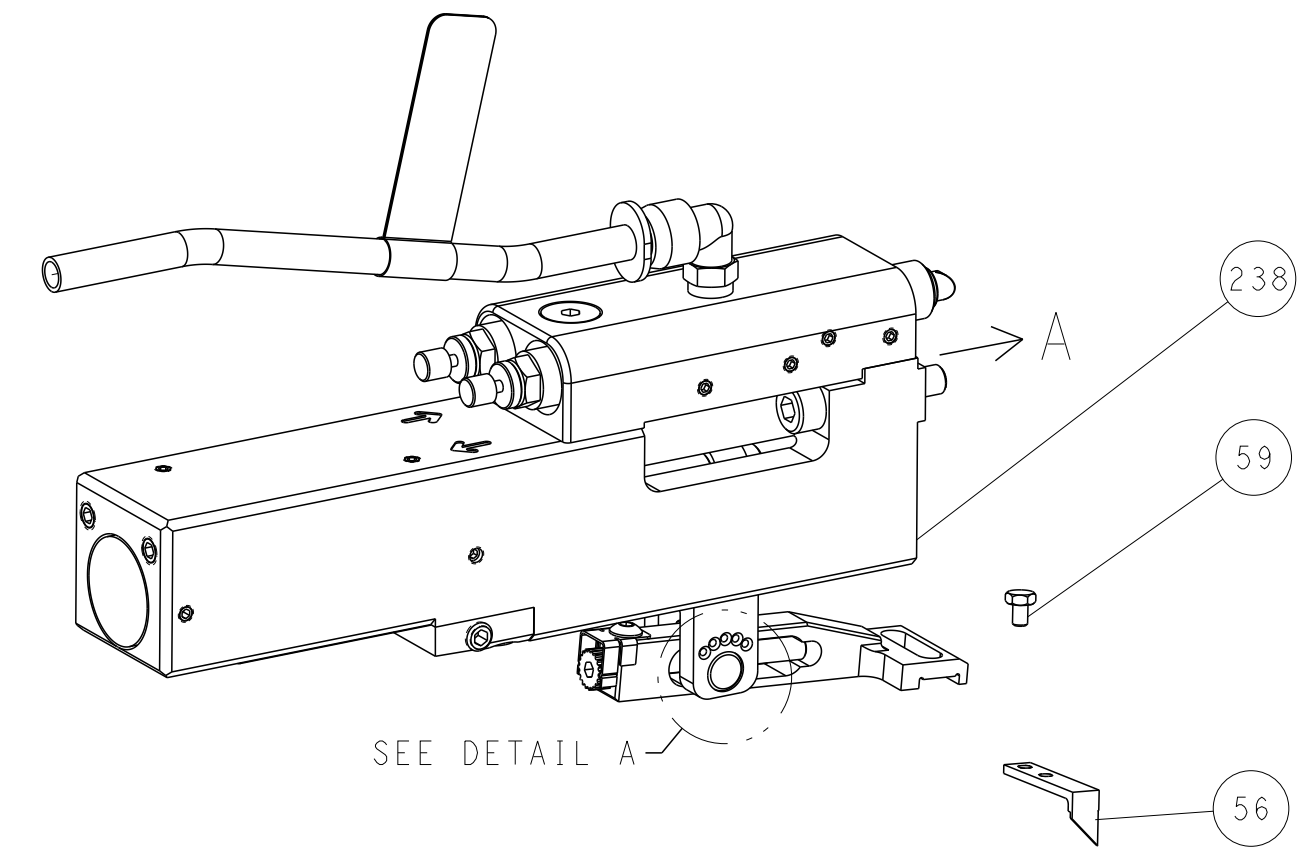
QTY	LOC	DIST	REV	DESCRIPTION	DATE	BY	APPV
-	1	2119082-8		CAM, SNAIL, INSULATION ADJUSTMENT			244
-	1	2079764-1		WASHER, WAVE SPRING, CREST-TO-CREST			243
-	1	2119083-1		RETAINER, INSULATION DIAL			242
-	1	7-18023-7		SCR, SKT HD CAP M3 X 4.0			241
-	1	2844940-2		AIR FEED MODULE			238
-	REF	994970-2		COUNTER, MAGNETIC			164
-	1	2119641-2		FEED CAM, AIR FEED			151
-	1	2168083-8		SCR, SKT HD CAP, RoHS, M4 X 16			144
-	4	2168083-9		SCR, SKT HD CAP, RoHS, M4 X 20			143
-	1	1-1803583-0		APPLICATOR BASIC ASSEMBLY, SF			141
-	1	1803516-1		RAM ASSEMBLY, SF PACIFIC			140
-	1	2844908-1		SCREW, LOCKING			99
-	1	2844907-1		POST, LOCKING			98
-	1	455888-4		SPACER, CRIMPER			82
-	1	1803607-3		DOCUMENTATION PACKAGE			71
-	1	2119740-1		TAG, IDENTIFICATION			67
-	2	2168078-1		SCREW, DRIVE, RH, RoHS, 2 x .188			66
-	1	5-18022-5		SCR, HEX HD CAP, M4 X 6.0			59
-	1	1338685-1		PAWL, FEED			56
-	2	1-2168083-0		SCR, SKT HD CAP, RoHS, M4 X 10			53
-	1	1803382-6		HOLD DOWN, SPRING LOADED			50
-	1	18023-9		SCR, SKT HD CAP M4 X 6.0			49
-	1	1803602-1		SCR, BHSC, RoHS (M8 X 25)			41
-	1	1752356-3		SUPPORT, TERMINAL			34
-	2	2079383-5		SCR, BHSC, RoHS (M4 X 20)			33
-	2	2-2844962-6		SPACER, CYLINDRICAL, STRIP GUIDE			30
-	1	2844992-1		ASSEMBLY, STRIP GUIDE			29
-	1	455888-5		SPACER, CRIMPER			28
-	1	1320928-2		STRIP GUIDE			24
-	1	2168083-2		SCR, SKT HD CAP, RoHS, M4 X 8.0			21
-	2	1-18028-2		WASHER, FLAT, REG M4			20
-	1	2119533-1		STRIPPER, SIDE FEED			19
-	1	2119806-1		INSERT, SHEAR			13
-	1	3-22280-3		SPRING, COMPRESSION			12
-	1	1-356885-4		STOP, SHEAR			11
-	1	2119805-1		SHEAR HOLDER, FRONT			10
-	1	1803095-6		FLOATING SHEAR, FRONT			9
-	1	1-1803537-6		ANVIL, COMBINATION			8
-	-	-		-			7
-	-	-		-			6
-	1	2119757-6		DEPRESSOR, SHEAR			5
-	1	5-238011-2		BLOCK, CRIMPER SPACER			4
-	1	4-1803199-1		CRIMPER, INSULATION OVERLAP PREMIUM			3
-	1	455888-3		SPACER, CRIMPER			2
-	1	8-568176-0		CRIMPER, WIRE			1

**PACIFIC VERSION**  
 Shown on sheets 3 of 4 & 4 of 4  
 (Atlantic version shown on sheets 1 of 4 & 2 of 4)

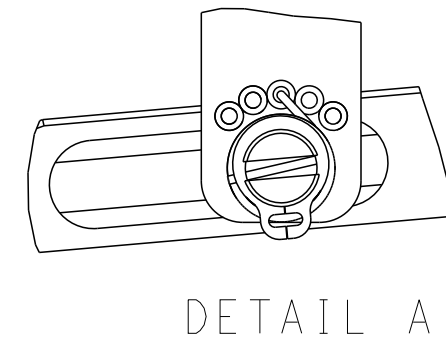
DIMENSIONS: mm 		TOLERANCES UNLESS OTHERWISE SPECIFIED: 0 PLC ± 1 PLC ± 2 PLC ± 3 PLC ± 4 PLC ± ANGLES ± FINISH		DWG: B. WEAVER 21FEB2018 CHK: T. ELBIN 21FEB2018 APVD: T. ELBIN 21FEB2018		NAME: STE TE Connectivity Harrisburg, PA 17105-3608 PRODUCT SPEC: Ocean Side Feed Applicator APPLICATION SPEC:	
MATERIAL:		WEIGHT:		SCALE: A1 00779 ©=2837130		RESTRICTED TO:	
Customer Accessible Production Drawing				SCALE: 1:2		SHEET 3 OF 4 REV C1	

LOC	DIST	REVISIONS					
		P	LTN	DESCRIPTION	DATE	DMN	APVD
A	66	-	-	SEE SHEET 1	-	-	-

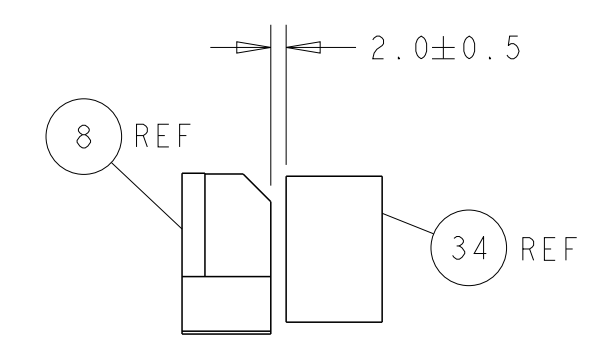
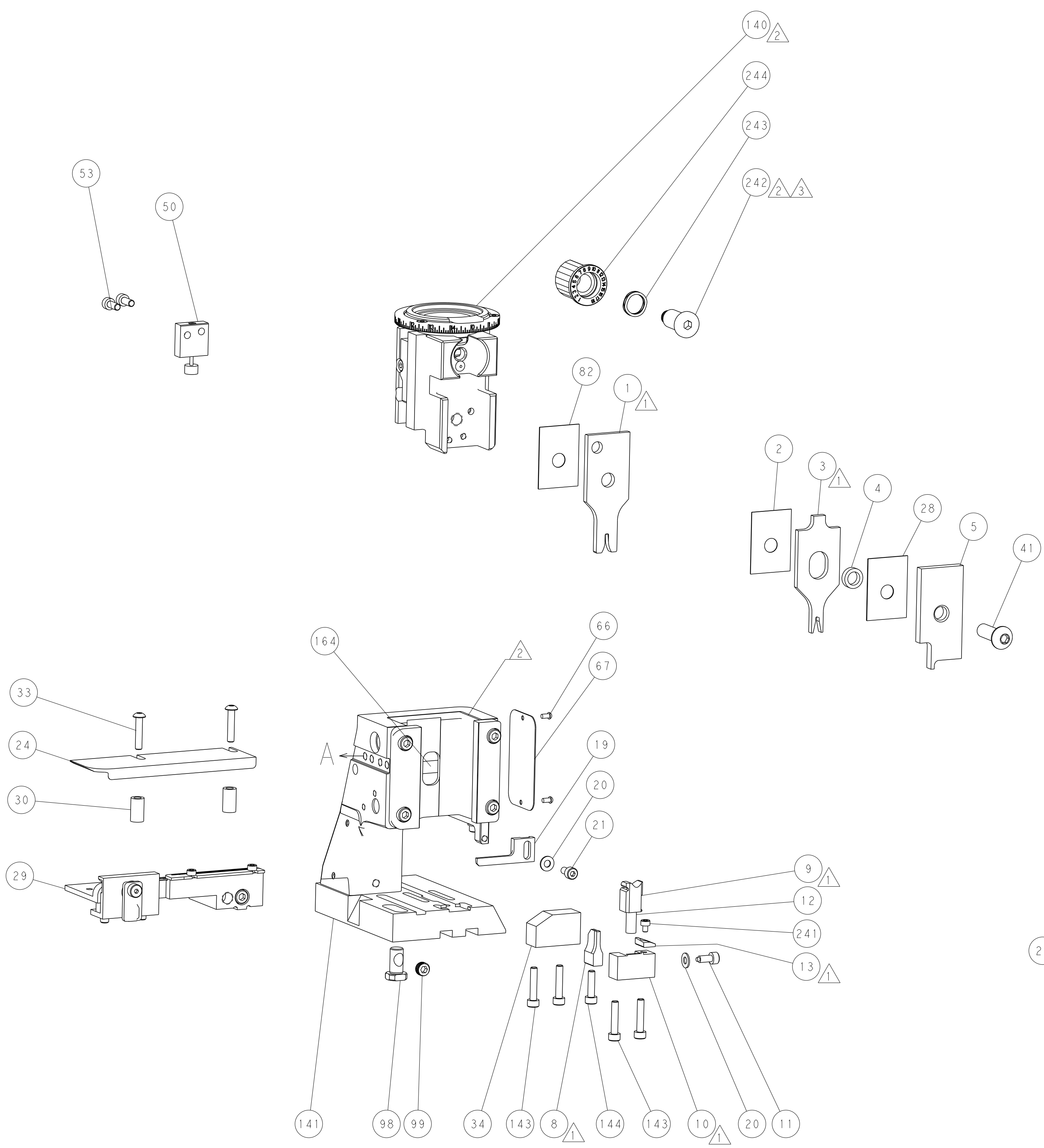
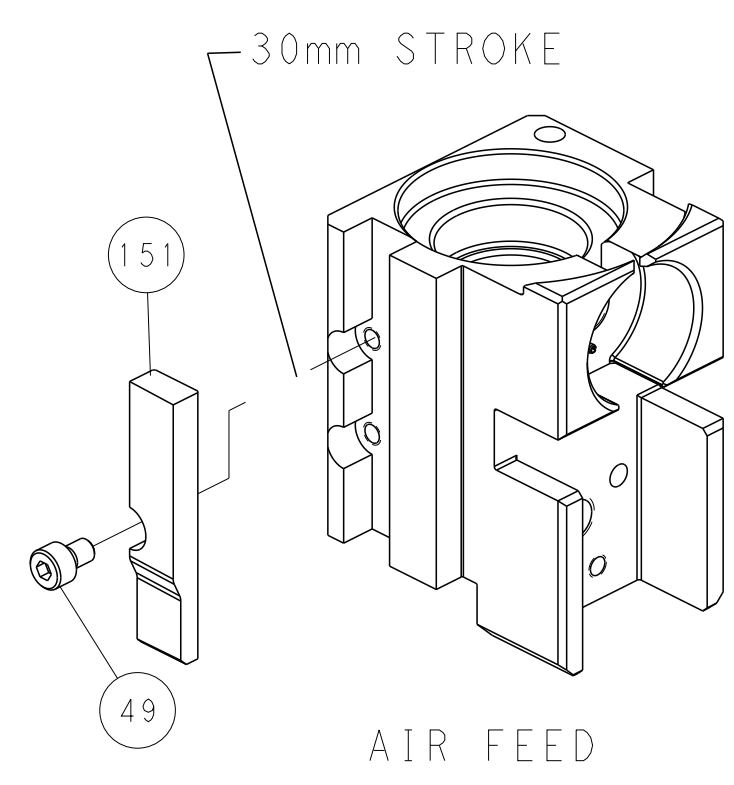
### FEED TYPE PNEUMATIC



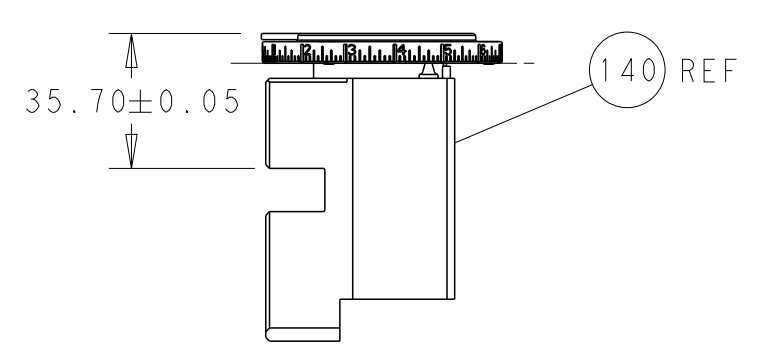
### FEED SPRING SETTING POSITION (SHOWN FROM REAR SIDE)



### CAM POSITION

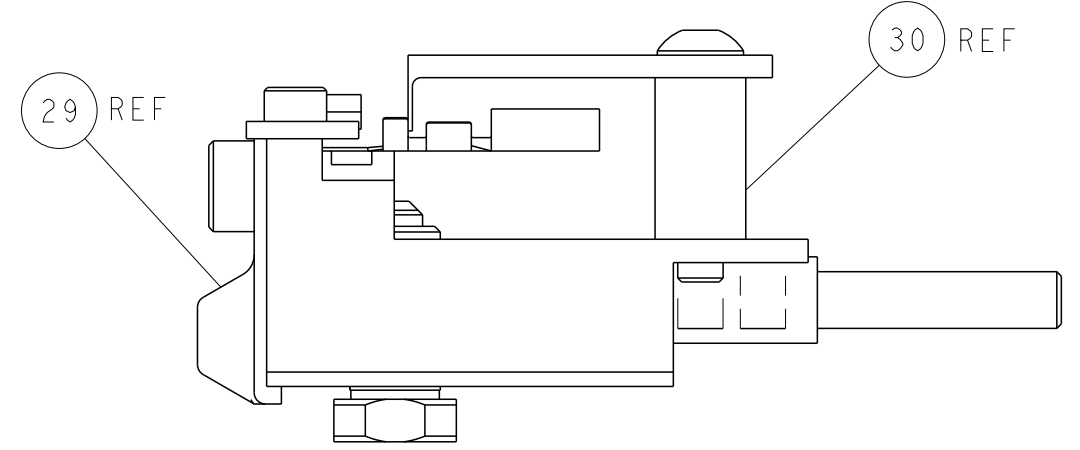


TERMINAL SUPPORT LOCATION



RAM SET-UP

ITEM 30 LOCATED AT  
FRONT HOLES



FEED TRACK POSITION  
GUIDE BY INSULATION BARREL

**PACIFIC VERSION**  
 Shown on sheets 3 of 4 & 4 of 4  
 (Atlantic version shown on sheets 1 of 4 & 2 of 4)

<small>THIS DRAWING IS UNPUBLISHED. RELEASED FOR PUBLICATION 2018. ALL RIGHTS RESERVED. THIS DRAWING IS CONTROLLED DOCUMENT. FOR THE ELECTRONICS CORPORATION. IT IS THE POLICY OF THE CORPORATION TO CONTROL THE IDENTIFICATION AND DISTRIBUTION OF THIS DOCUMENT TO THE LARGEST EXTENT POSSIBLE.</small>		DWG: B. WEAVER 21FEB2018 CHK: T. ELBIN 21FEB2018 APVD: T. ELBIN 21FEB2018	TE Connectivity Harrisburg, PA 17105-3608
DIMENSIONS: mm TOLERANCES UNLESS OTHERWISE SPECIFIED: 0 PLC ± 1 PLC ± 2 PLC ± 3 PLC ± 4 PLC ± ANGLES ± FINISH ±		NAME: Ocean Side Feed Applicator PRODUCT SPEC: APPLICATION SPEC: SIZE: A1 CAGE CODE: 00779 DRAWING NO: C=2837130 WEIGHT:	RESTRICTED TO: SCALE: 1:2 SHEET: 4 OF 4 REV: C1
MATERIAL:		Customer Accessible Production Drawing	