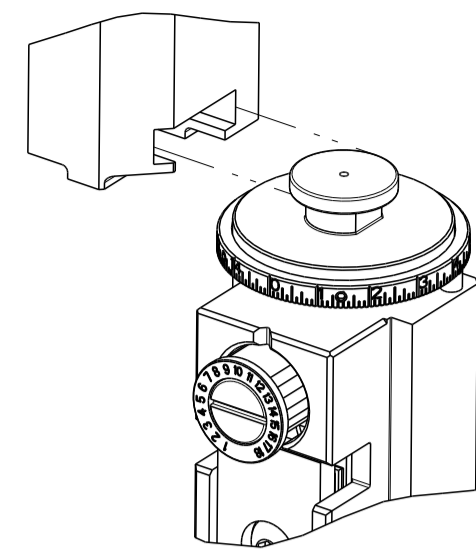


PART NUMBER	REVISION	DESCRIPTION	FEED TYPE
2837129-2	C	FINE CRIMP HEIGHT ADJUST	PNEUMATIC
7-2837129-2	C	PNEUMATIC AND CRIMP TOOLING KIT	PNEUMATIC
7-2837129-7	A	CRIMP TOOLING KIT	-

ATLANTIC VERSION TERMINATOR INTERFACE ADAPTER



APPLICATOR DATA		
CRIMP	SIZE	TYPE
WIRE	1.86 mm [.073]	F
INSUL	2.95 mm [.116]	OV

APPLICATOR INSTRUCTIONS 408-35042

TERMINAL DATA: FCI TERMINAL		FCI CRIMP SPECIFICATION	
TERMINAL NAME: 2.8 X 0.8 FEMALE TERMINAL			
WIRE STRIP LENGTH		TERMINAL INSULATION DIAMETER RANGE	
4.15-4.91 mm [.163-.193 IN]		Ø1.60-2.40 mm [.063-.094 IN]	
TERMINAL APPLICATION SPECIFICATION	FE CS 09 002 Rev A00		
TERMINALS APPLIED			
TE TERMINAL	FCI TERMINAL	TE TERMINAL	FCI TERMINAL
3311099-1	211CC3S4160	3311099-3	24346 9516 R
3311099-2	15522621	3311099-4	455297517

WIRE SIZE	CRIMP HEIGHT mm [INCH]	CRIMP HEIGHT REFERENCE SETTING
1.25mm2	1.56+/-0.04 [.061+/- .002]	5.2
0.35 + 1.00mm2	1.53+/-0.04 [.060+/- .002]	5.5
0.50 + 0.75mm2	1.51+/-0.04 [.059+/- .002]	5.8
0.35 + 0.75mm2	1.44+/-0.04 [.057+/- .002]	6.4
0.50 + 0.50mm2	1.42+/-0.04 [.056+/- .002]	6.7
1.00mm2	1.40+/-0.04 [.055+/- .002]	6.9
0.85mm2	1.40+/-0.04 [.055+/- .002]	6.9
0.35 + 0.50mm2	1.34+/-0.04 [.053+/- .002]	7.5
0.75mm2	1.31+/-0.04 [.052+/- .002]	7.8

- 1. RECOMMENDED SPARE PARTS
- 2. REFER TO SUPPLIED INSTRUCTION SHEET FOR CLEANING, LUBRICATION AND STORAGE OF APPLICATOR.
- 3. APPLY PART NUMBER 2-23419-6 LOCTITE TO THREADS OF ITEM 242.
- 4. CRIMP HEIGHT REFERENCE SETTING WAS THE SETTING USED WHEN THE APPLICATOR WAS QUALIFIED AT THE FACTORY. ADJUSTMENT MAY BE NECESSARY WHEN RUNNING APPLICATOR IN THE FIELD.
- 5. UNLESS SPECIFIED OTHERWISE TORQUE VALUES SHALL BE USED PER DOCUMENT, 101-35000.
- 6. TERMINAL PITCH NOT COMPATIBLE WITH MECHANICAL FEED.

***WARNING**
ON INSTALLATION, SET WIRE DISC TO CRIMP HEIGHT REFERENCE SETTING FOR LARGEST WIRE SIZE. CRIMP HEIGHT REFERENCE SETTINGS GREATER THAN THE VALUE SHOWN MAY CAUSE DAMAGE TO THE CRIMP TOOLING, REFER TO THE INSTRUCTION SHEET FOR PROPER SETUP AND ADJUSTMENTS.

ATLANTIC VERSION
Shown on sheets 1 of 4 & 2 of 4
(Pacific version shown on sheets 3 of 4 & 4 of 4)

LOC	DIST	REVISIONS					
		P	LTN	DESCRIPTION	DATE	OWN	APVD
A	66	1		DEVELOPMENT	07FEB2018	MZ	KZ
		A		RELEASED	02MAR2018	TB	CT
		B		ECR-19-005011	28MAR2019	FL	CT
		C		ECR-19-010598	07JUL2019	TB	TE

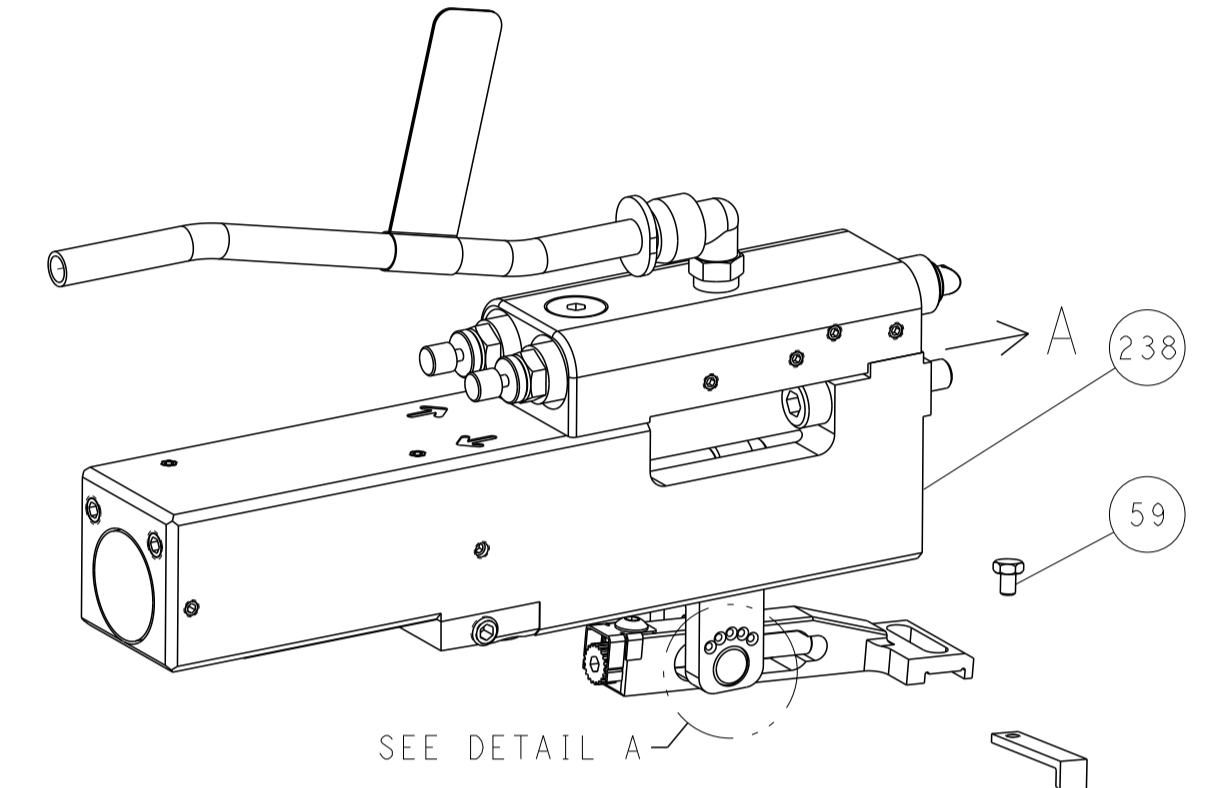
-	1	1	2119641-1	FEED CAM, AIR FEED	248
-	1	1	2119082-5	CAM, SNAIL, INSULATION ADJUSTMENT	244
-	1	1	2079764-1	WASHER, WAVE SPRING, CREST-TO-CREST	243
-	1	1	2119083-1	RETAINER, INSULATION DIAL	242
-	1	1	7-18023-7	SCR, SKT HD CAP M3 X 4.0	241
-	1	1	2844940-1	AIR FEED MODULE	238
-	REF	REF	994970-2	COUNTER, MAGNETIC	164
-	1	1	2844908-1	SCREW, LOCKING	99
-	1	1	2844907-1	POST, LOCKING	98
-	1	1	455888-8	SPACER, CRIMPER	82
-	1	1	1803607-3	DOCUMENTATION PACKAGE	71
-	1	1	2119791-5	DEPRESSOR, WIRE	70
-	1	1	2119740-1	TAG, IDENTIFICATION	67
-	2	2	2168078-1	SCREW, DRIVE, RH, RoHS, 2 x .188	66
-	1	1	2168083-2	SCR, SKT HD CAP, RoHS, M4 X 8.0	60
-	1	1	5-18022-5	SCR, HEX HD CAP, M4 X 6.0	59
-	1	1	1338683-8	FEED PAWL	56
-	4	4	2168083-3	SCR, SKT HD CAP, RoHS, M4 X 12.0	54
-	2	2	2168083-3	SCR, SKT HD CAP, RoHS, M4 X 12.0	53
-	1	1	1803382-6	HOLD DOWN, SPRING LOADED	50
-	1	1	18023-9	SCR, SKT HD CAP M4 X 6.0	49
-	1	1	1803583-9	APPLICATOR BASIC ASSEMBLY, SF	46
-	1	1	1803515-1	RAM ASSEMBLY, SF ATLANTIC	44
-	1	1	1803602-1	SCR, BHSC, RoHS (M8 X 25)	41
-	1	1	1-1752356-3	SUPPORT, TERMINAL	34
-	2	2	2079383-5	SCR, BHSC, RoHS (M4 X 20)	33
-	2	2	3-2844962-0	SPACER, CYLINDRICAL, STRIP GUIDE	30
-	1	1	2844992-2	ASSEMBLY, STRIP GUIDE	29
-	1	1	455888-5	SPACER, CRIMPER	28
-	1	1	1320928-2	STRIP GUIDE	24
-	1	1	2168083-2	SCR, SKT HD CAP, RoHS, M4 X 8.0	21
-	2	2	1-18028-2	WASHER, FLAT, REG M4	20
-	1	1	2119533-1	STRIPPER, SIDE FEED	19
-	1	1	2119806-1	INSERT, SHEAR	13
-	1	1	3-22280-3	SPRING, COMPRESSION	12
-	1	1	1-356885-5	STOP, SHEAR	11
-	1	1	2119805-1	SHEAR HOLDER, FRONT	10
-	1	1	1803095-5	FLOATING SHEAR, FRONT	9
-	1	2	1-81803318-7	ANVIL, COMBINATION	8
-	1	1	1-240641-3	SPACER	7
-	-	-	-	-	6
-	1	1	1-2119757-0	DEPRESSOR, SHEAR	5
-	1	1	1-238011-7	BLOCK, CRIMPER SPACER	4
-	1	2	4-1633964-1	CRIMPER, INSULATION OVERLAP PREMIUM	3
-	1	1	455888-3	SPACER, CRIMPER	2
-	1	2	5-1803224-9	CRIMPER, WIRE	1

DIMENSIONS:		TOLERANCES UNLESS OTHERWISE SPECIFIED:		MATERIAL:		FINISH:		WEIGHT:		SCALE:		SHEET:		REV:				
mm	0 PLC ±	1 PLC ±	2 PLC ±	3 PLC ±	4 PLC ±	ANGLES	FINISH			Customer Accessible Production Drawing	SCALE	1:2	SHEET	1	OF	4	REV	C

LOC	DIST	REV	DATE	BY	APPV
A	66	-	SEE SHEET 1	-	-

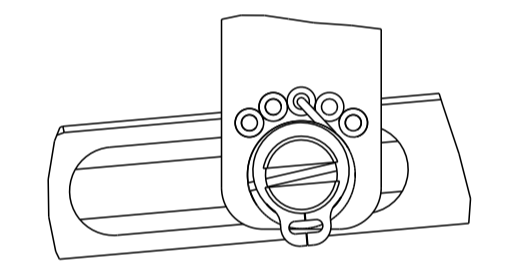
FEED TYPE

PNEUMATIC



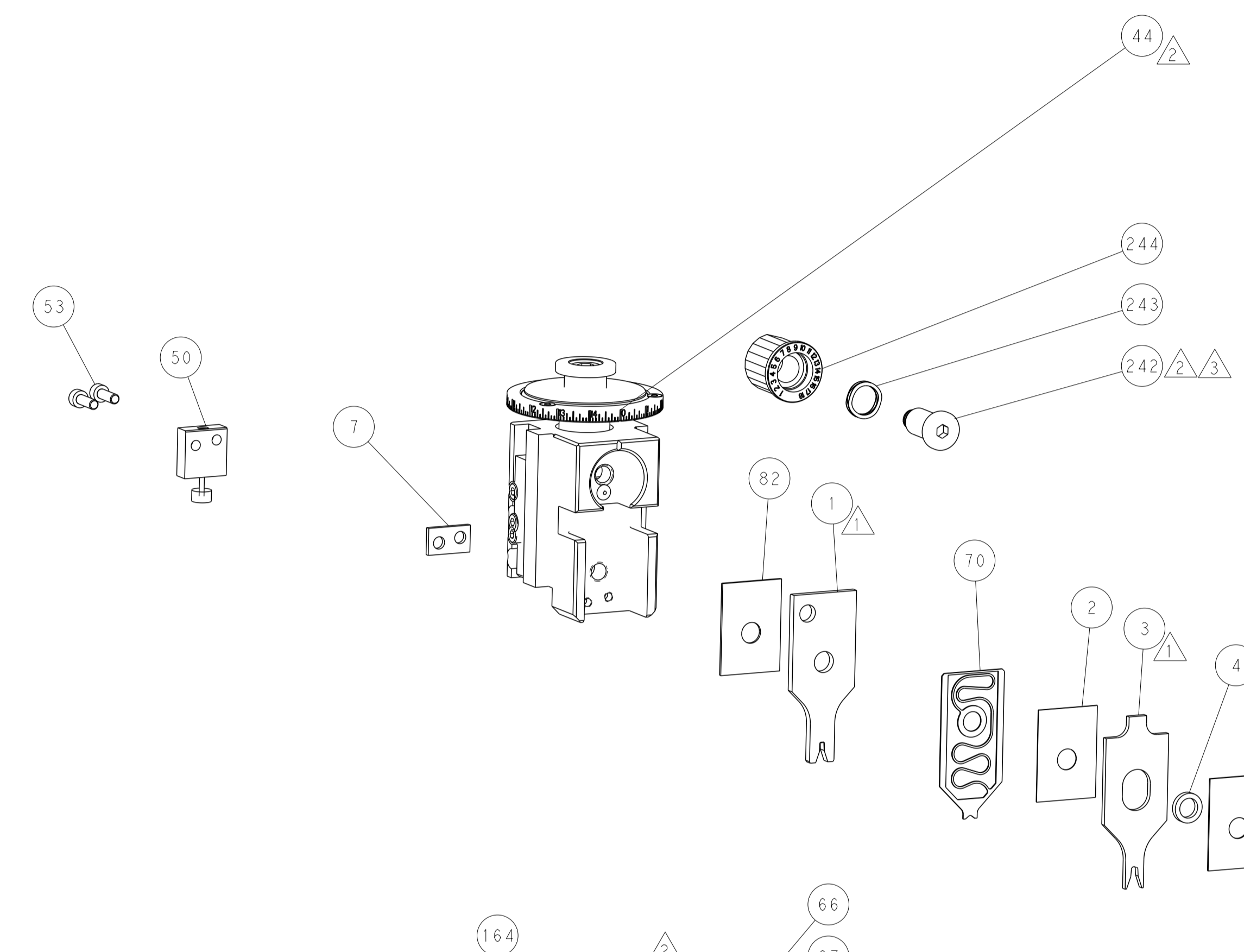
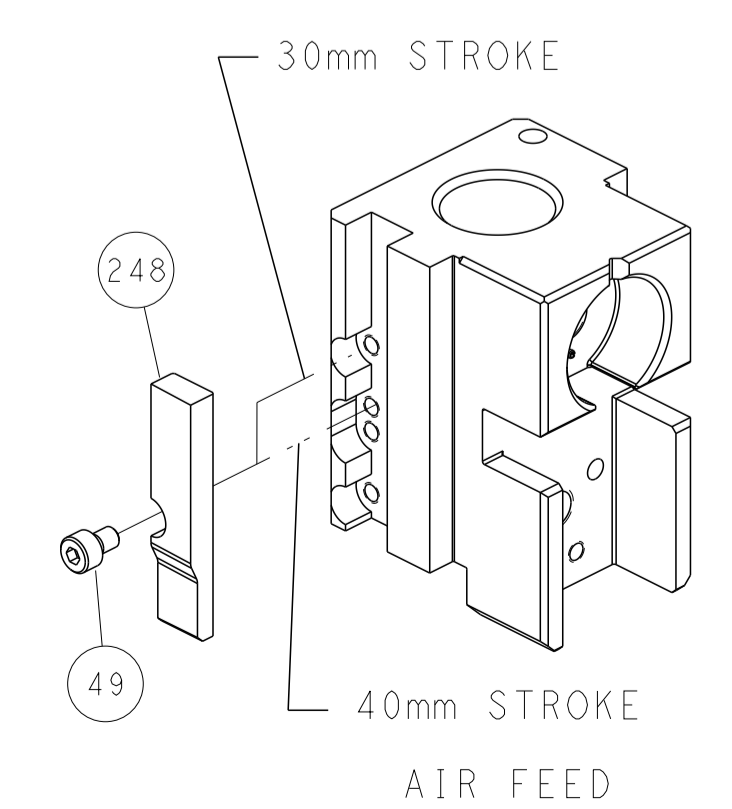
SEE DETAIL A

FEED SPRING SETTING POSITION
(SHOWN FROM REAR SIDE)

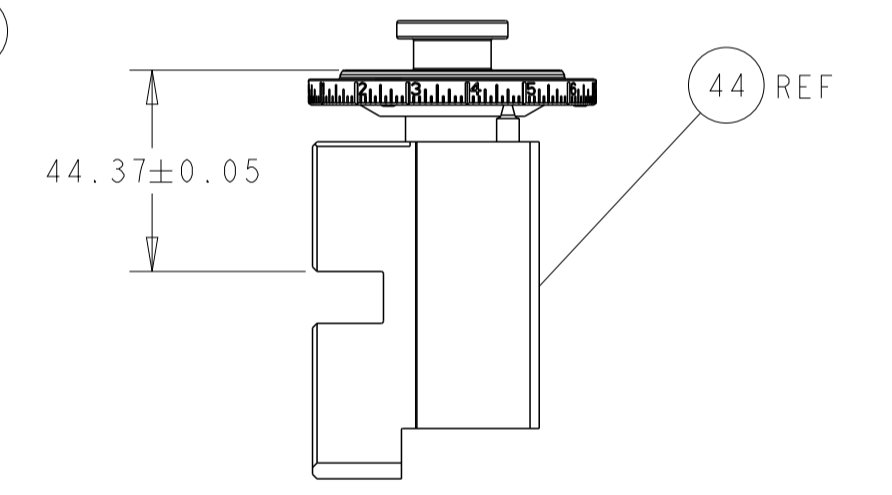


DETAIL A

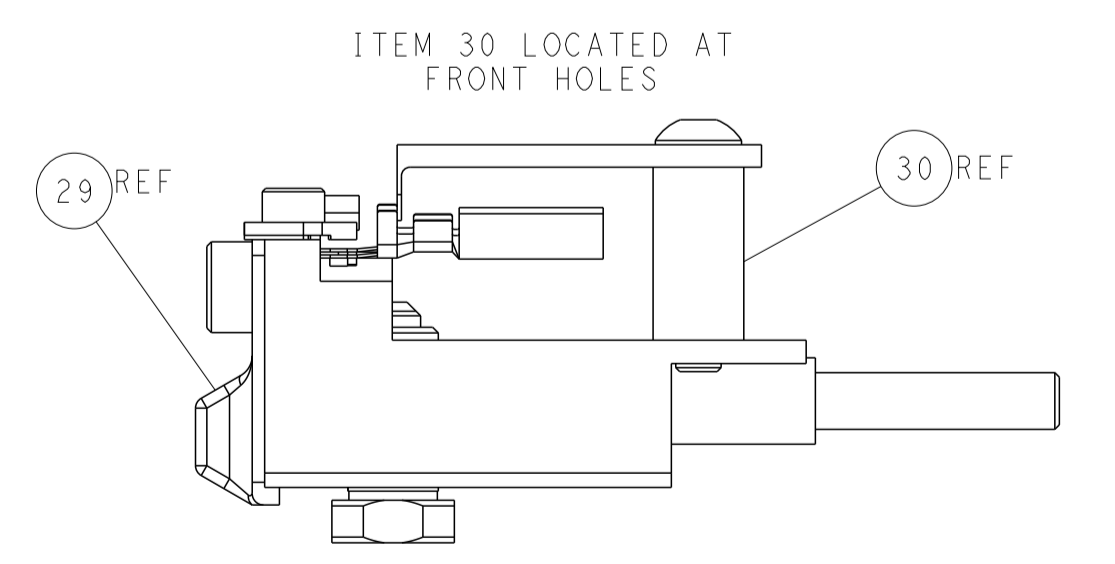
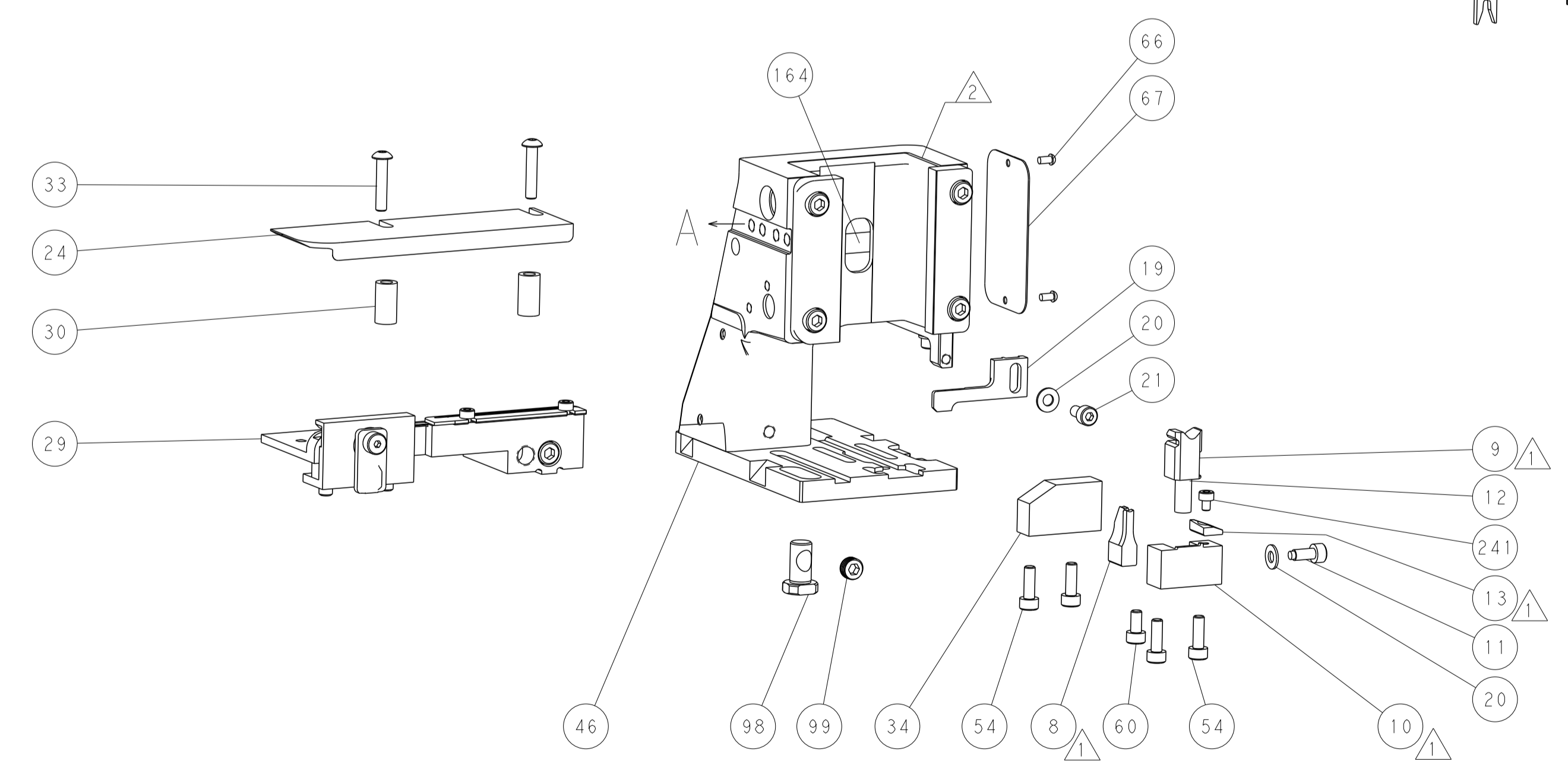
CAM POSITION



TERMINAL SUPPORT LOCATION



RAM SET-UP



FEED TRACK POSITION
GUIDE BY INSULATION BARREL

ATLANTIC VERSION
 Shown on sheets 1 of 4 & 2 of 4
 (Pacific version shown on sheets 3 of 4 & 4 of 4)

<small>THIS DRAWING IS UNPUBLISHED. RELEASED FOR PUBLICATION BY TYCO ELECTRONICS CORPORATION. ALL RIGHTS RESERVED.</small>		DWN: M. ZHAO 07FEB2018 CHK: K. ZHANG 07FEB2018 APVD: K. ZHANG 07FEB2018	TE Connectivity Harrisburg, PA 17105-3608
DIMENSIONS: mm TOLERANCES UNLESS OTHERWISE SPECIFIED: 0 PLC ± 1 PLC ± 2 PLC ± 3 PLC ± 4 PLC ± ANGLES ± FINISH		NAME: Ocean Side Feed Applicator PRODUCT SPEC APPLICATION SPEC SIZE: A1 CAGE CODE: 00779 DRAWING NO: 2837129 WEIGHT: - SCALE: 1:2	RESTRICTED TO: - SHEET 2 OF 4 REV C
Customer Accessible Production Drawing			

8	7	6	5	4	3	2	1
THIS DRAWING IS UNPUBLISHED.		RELEASED FOR PUBLICATION		20			
COPYRIGHT © BY TYCO ELECTRONICS CORPORATION. ALL RIGHTS RESERVED.							
PART NUMBER	REVISION	DESCRIPTION	FEED TYPE				
2-2837129-2	C	FINE CRIMP HEIGHT ADJUST	PNEUMATIC				
7-2837129-7	A	CRIMP TOOLING KIT	-				

PACIFIC VERSION TERMINATOR
INTERFACE ADAPTER



APPLICATOR DATA		
CRIMP	SIZE	TYPE
WIRE	1.86 mm [.073]	F
INSUL	2.95 mm [.116]	OV
APPLICATOR INSTRUCTIONS 408-35042		

TERMINAL DATA: FCI TERMINAL		FCI CRIMP SPECIFICATION	
TERMINAL NAME: 2.8 X 0.8 FEMALE TERMINAL			
WIRE STRIP LENGTH 4.15-4.91 mm [.163-.193 IN]		TERMINAL INSULATION DIAMETER RANGE Ø1.60-2.40 mm [.063-.094 IN]	
TERMINAL APPLICATION SPECIFICATION FE CS 09 002 Rev A00	-	-	-
TERMINALS APPLIED			
TE TERMINAL	FCI TERMINAL	TE TERMINAL	FCI TERMINAL
3311099-1	211CC3S4160	3311099-3	24346 9516 R
3311099-2	15522621	3311099-4	455297517

WIRE SIZE	CRIMP HEIGHT mm [INCH]	CRIMP HEIGHT REFERENCE SETTING
1.25mm2	1.56 +/- 0.04 [.061 +/- .002]	5.2
0.35 + 1.00mm2	1.53 +/- 0.04 [.060 +/- .002]	5.5
0.50 + 0.75mm2	1.51 +/- 0.04 [.059 +/- .002]	5.8
0.35 + 0.75mm2	1.44 +/- 0.04 [.057 +/- .002]	6.4
0.50 + 0.50mm2	1.42 +/- 0.04 [.056 +/- .002]	6.7
1.00mm2	1.40 +/- 0.04 [.055 +/- .002]	6.9
0.85mm2	1.40 +/- 0.04 [.055 +/- .002]	6.9
0.35 + 0.50mm2	1.34 +/- 0.04 [.053 +/- .002]	7.5
0.75mm2	1.31 +/- 0.04 [.052 +/- .002]	7.8

- RECOMMENDED SPARE PARTS
- REFER TO SUPPLIED INSTRUCTION SHEET FOR CLEANING, LUBRICATION AND STORAGE OF APPLICATOR.
- APPLY PART NUMBER 2-23419-6 LOCTITE TO THREADS OF ITEM 242.
- CRIMP HEIGHT REFERENCE SETTING WAS THE SETTING USED WHEN THE APPLICATOR WAS QUALIFIED AT THE FACTORY. ADJUSTMENT MAY BE NECESSARY WHEN RUNNING APPLICATOR IN THE FIELD.
- 5. UNLESS SPECIFIED OTHERWISE TORQUE VALUES SHALL BE USED PER DOCUMENT, 101-35000.
- TERMINAL PITCH NOT COMPATIBLE WITH MECHANICAL FEED.

***WARNING**
ON INSTALLATION, SET WIRE DISC TO CRIMP HEIGHT REFERENCE SETTING FOR LARGEST WIRE SIZE. CRIMP HEIGHT REFERENCE SETTINGS GREATER THAN THE VALUE SHOWN MAY CAUSE DAMAGE TO THE CRIMP TOOLING, REFER TO THE INSTRUCTION SHEET FOR PROPER SETUP AND ADJUSTMENTS.

LOC	DIST	REV	DATE	BY	APPV
A	66				

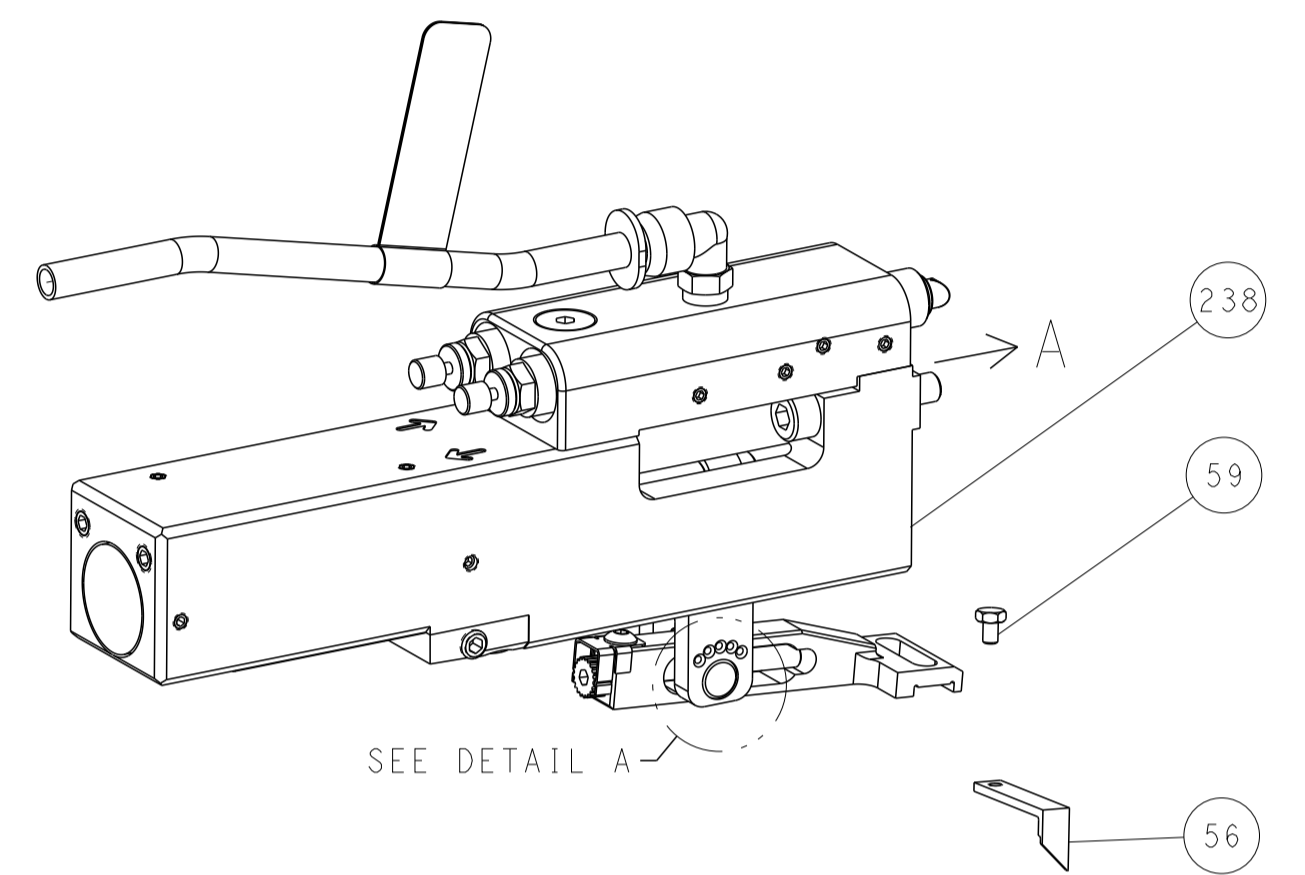
REV	DATE	DESCRIPTION	DATE	BY	APPV
-	1	2119082-5			244
-	1	2079764-1			243
-	1	2119083-1			242
-	1	7-18023-7			241
-	1	2844940-1			238
-	REF	994970-2			164
-	1	2119641-2			151
-	1	2168083-8			144
-	4	2168083-9			143
-	1	1-1803583-0			141
-	1	1803516-1			140
-	1	2844908-1			99
-	1	2844907-1			98
-	1	455888-8			82
-	1	1803607-3			71
-	1	2119791-5			70
-	1	2119740-1			67
-	2	2168078-1			66
-	1	5-18022-5			59
-	1	1338683-8			56
-	2	2168083-3			53
-	1	1803382-6			50
-	1	18023-9			49
-	1	1803602-1			41
-	1	1-1752356-3			34
-	2	2079383-5			33
-	2	3-2844962-0			30
-	1	2844992-2			29
-	1	455888-5			28
-	1	1320928-2			24
-	1	2168083-2			21
-	2	1-18028-2			20
-	1	2119533-1			19
-	1	2119806-1			13
-	1	3-22280-3			12
-	1	1-356885-5			11
-	1	2119805-1			10
-	1	1803095-5			9
-	1	8-1803318-7			8
-	1	1-240641-3			7
-	-	-			6
-	1	1-2119757-0			5
-	1	1-238011-7			4
-	1	4-1633964-1			3
-	1	455888-3			2
-	1	5-1803224-9			1
-77	-22	PART NO			ITEM NO

PACIFIC VERSION
Shown on sheets 3 of 4 & 4 of 4
(Atlantic version shown on sheets 1 of 4 & 2 of 4)

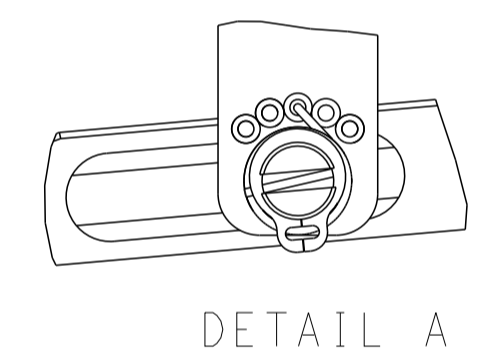
DIMENSIONS:		TOLERANCES UNLESS OTHERWISE SPECIFIED:		DWG: M. ZHAO 07FEB2018		CHK: K. ZHANG 07FEB2018		APVD: K. ZHANG 07FEB2018		NAME: Ocean Side Feed Applicator	
mm	0 PLC ±	1 PLC ±	2 PLC ±	3 PLC ±	4 PLC ±	ANGLES ±	FINISH	SIZE: A1	CAGE CODE: 00779	DRAWING NO: C=2837129	RESTRICTED TO: -
MATERIAL: -		FINISH: -		WEIGHT: -		SCALE: 1:2		SHEET: 3 OF 4		REV: C	

LOC	DIST	REVISIONS					
A	66	P	LTH	DESCRIPTION	DATE	OWN	APVD
		-		SEE SHEET 1			

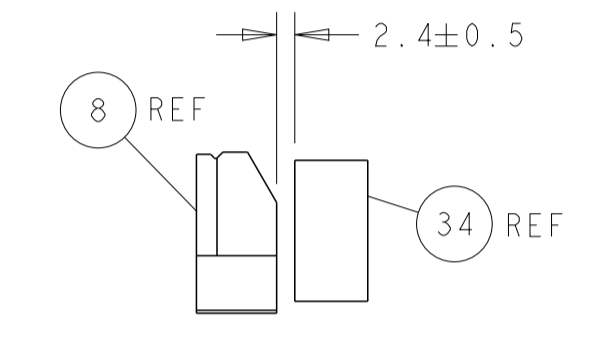
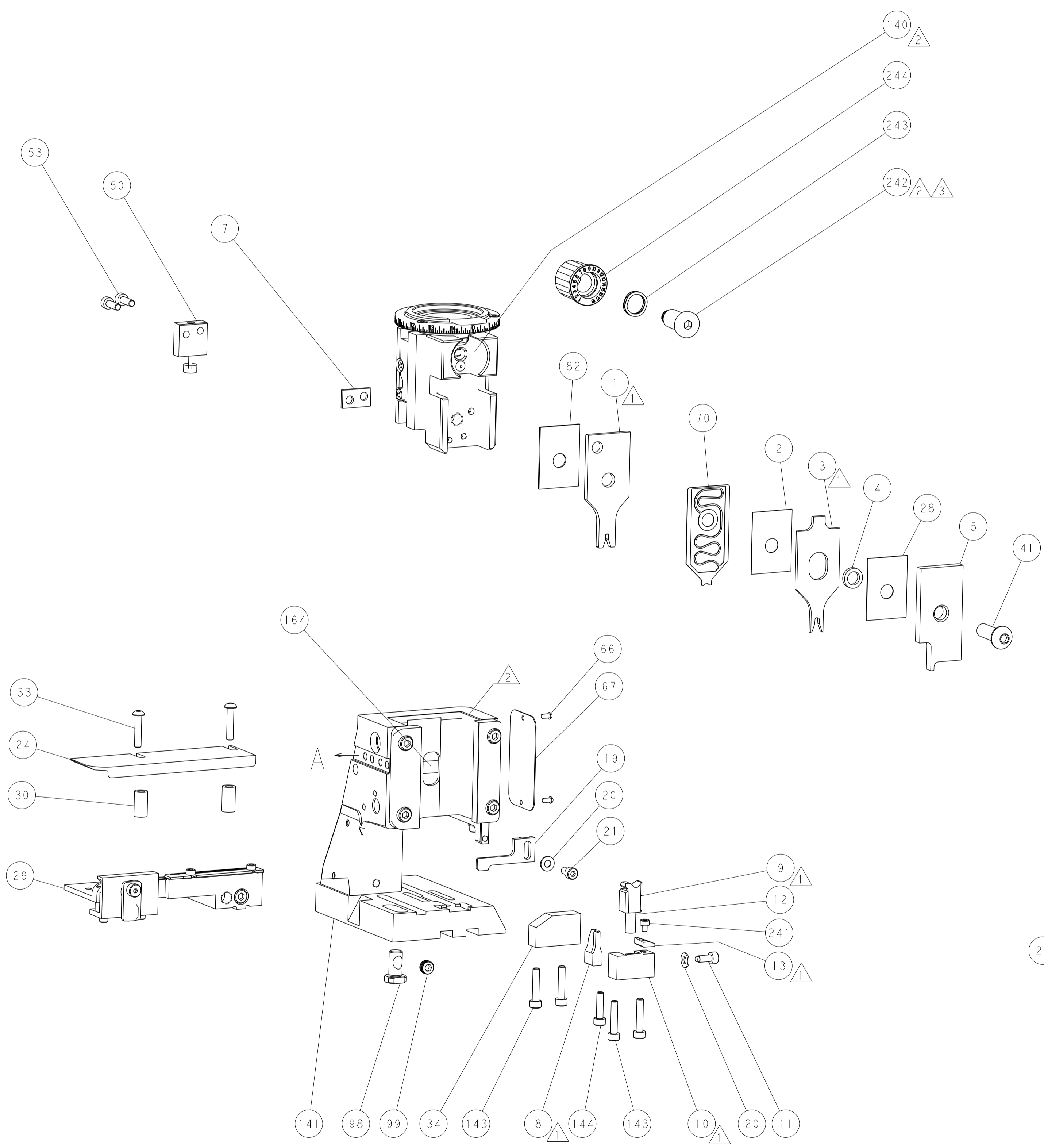
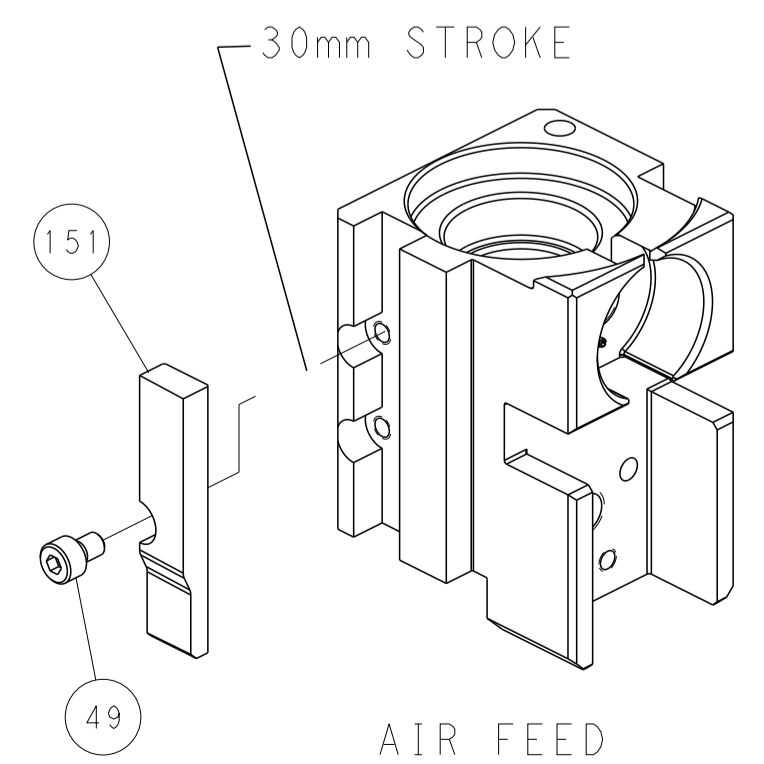
FEED TYPE PNEUMATIC



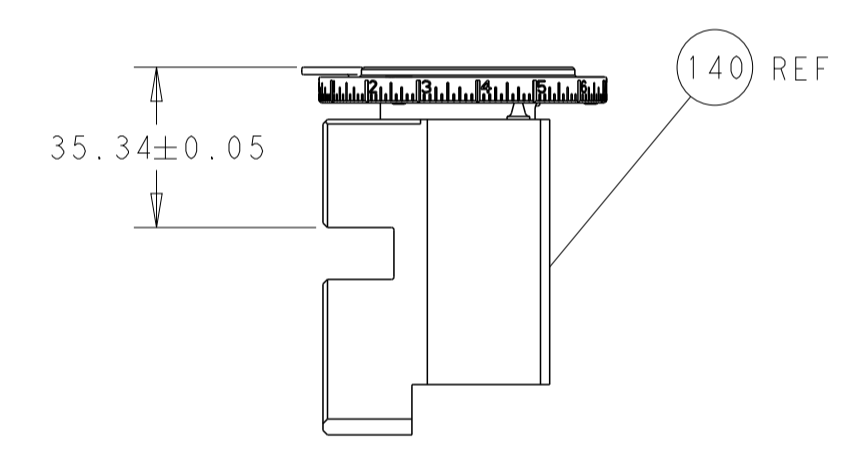
FEED SPRING SETTING POSITION
(SHOWN FROM REAR SIDE)



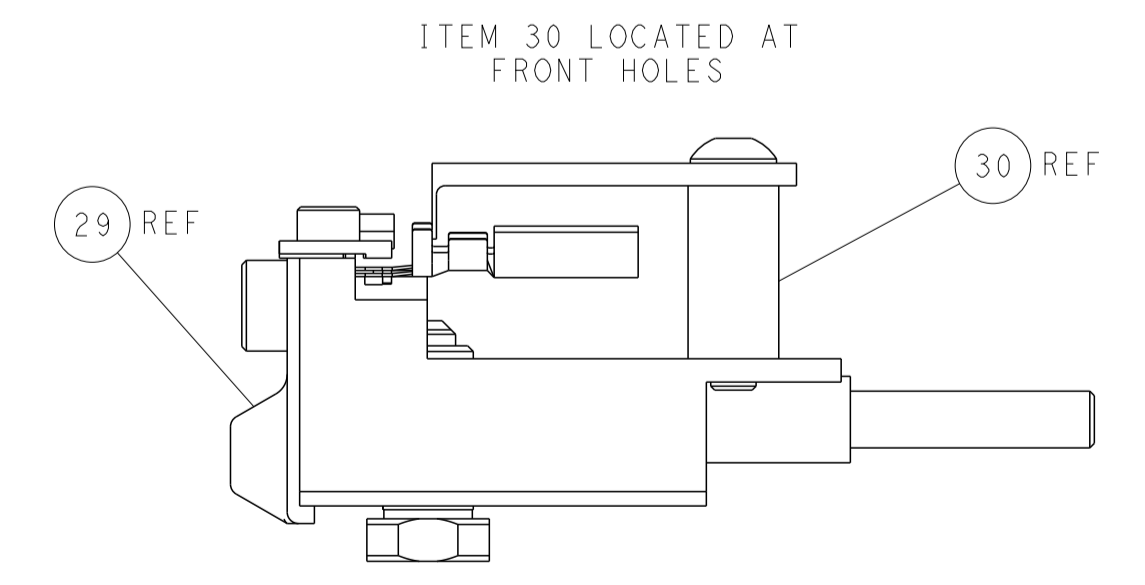
CAM POSITION



TERMINAL SUPPORT LOCATION



RAM SET-UP



FEED TRACK POSITION
GUIDE BY INSULATION BARREL

PACIFIC VERSION
 Shown on sheets 3 of 4 & 4 of 4
 (Atlantic version shown on sheets 1 of 4 & 2 of 4)

<small>THIS DRAWING IS UNPUBLISHED. RELEASED FOR PUBLICATION 20. COPYRIGHT 20 BY TYCO ELECTRONICS CORPORATION. ALL RIGHTS RESERVED.</small>		DWN: M. ZHAO 07FEB2018 CHK: K. ZHANG 07FEB2018 APVD: K. ZHANG 07FEB2018	TE Connectivity Harrisburg, PA 17105-3608
DIMENSIONS: mm TOLERANCES UNLESS OTHERWISE SPECIFIED: 0 PLC ± 1 PLC ± 2 PLC ± 3 PLC ± 4 PLC ± ANGLES ± MATERIAL: - FINISH: -		NAME: Ocean Side Feed Applicator PRODUCT SPEC: - APPLICATION SPEC: - SIZE: A1 CAGE CODE: 00779 DRAWING NO: 2837129 WEIGHT: - SCALE: 1:2	RESTRICTED TO: - SHEET: 4 OF 4 REV: C
Customer Accessible Production Drawing		SHEETS 1 & 2 ARE NOT REQUIRED FOR PACIFIC VERSION	