

8 7 6 5 4 3 2 1

THIS DRAWING IS UNPUBLISHED. RELEASED FOR PUBLICATION 2018

BY TYCO ELECTRONICS CORPORATION. ALL RIGHTS RESERVED.

ATLANTIC VERSION TERMINATOR INTERFACE ADAPTER

PART NUMBER	REVISION	DESCRIPTION	FEED TYPE
2837086-1	A	FINE CRIMP HEIGHT ADJUST	MECHANICAL
2837086-2	A	FINE CRIMP HEIGHT ADJUST	PNEUMATIC
2837086-5	A	FINE CRIMP HEIGHT ADJUST	SERVO LATCH PLATE 4
2837086-6	A	NON-CRIMP HEIGHT ADJUST	SERVO LATCH PLATE 4
2837086-7	A	FINE CRIMP HEIGHT ADJUST	NONE
7-2837086-7	A	CRIMP TOOLING KIT	-

CRIMP WIRE	SIZE	TYPE
1.78 mm	[.070]	F
2.36 mm	[.093]	F

APPLICATOR INSTRUCTIONS 408-10389

TERMINAL DATA: Escubedo TERMINAL		ESCUBEDO CRIMP SPECIFICATION	
TERMINAL NAME: TERMINAL, HEMBRA 2.8			
WIRE STRIP LENGTH	TERMINAL INSULATION DIAMETER RANGE	4605 DATA SHT Rev 1	
3.00-4.00 mm [.118-.157 IN]	Ø1.50-2.00 mm [.059-.079 IN]		
TERMINALS APPLIED 3			
TE TERMINAL	Escubedo TERMINAL	TE TERMINAL	Escubedo TERMINAL
2113463-1	4605.00	2113463-2	4605.01
2113463-3	4605.30	2113463-4	4605.31

WIRE SIZE	CRIMP HEIGHT mm [INCH]	CRIMP HEIGHT REFERENCE SETTING
0.60mm2	1.10+/-0.05 [1.043+/-0.002]	6.7
0.5mm2 OR 20 AWG	1.05+/-0.05 [1.041+/-0.002]	7.2
0.3mm2 OR 22 AWG	1.00+/-0.05 [1.039+/-0.002]	7.8

- RECOMMENDED SPARE PARTS
- GREASE BEARING SURFACES LIGHTLY
3. LUBRICATE DAILY PER THE APPLICATOR INSTRUCTION SHEET SUPPLIED WITH THE APPLICATOR.
4. APPLICATOR SPECIFIC DATA TO BE ENTERED INTO BLANK MEMORY CHIP AT ASSEMBLY. SEE BELOW FOR PART NUMBER:  
 MECHANICAL FEED WITH "SMART APPLICATOR" CONVERSION: 8-2837086-4  
 PNEUMATIC FEED WITH "SMART APPLICATOR" CONVERSION: 8-2837086-4  
 SERVO FEED WITH "FINE CRIMP HEIGHT ADJUST": 8-2837086-5  
 SERVO FEED WITH "NON-CRIMP HEIGHT ADJUST": 8-2837086-6
5. ADJUSTMENT OF THE STRIPPER MAY BE REQUIRED WHEN MOVING THE APPLICATOR BETWEEN BENCH AND LEADMAKER APPLICATIONS.
6. APPLY PART NUMBER 1-23419-5 LOCTITE TO THREADS OF ITEM 62. APPLY PART NUMBER 2-23419-6 LOCTITE TO THREADS OF ITEM 242. FOR -6 ONLY APPLY PART NUMBER 1-23419-5 LOCTITE TO THREADS OF ITEM 37.
7. GREASE THREADS, GROOVE AND O-RING ON ITEMS 35 & 252.
8. MAGNET, ITEM 166 MUST BE ORIENTED CORRECTLY IN ORDER TO PROPERLY ACTUATE THE COUNTER.
9. CRIMP HEIGHT REFERENCE SETTING WAS THE SETTING USED WHEN THE APPLICATOR WAS QUALIFIED AT THE FACTORY. ADJUSTMENT MAY BE NECESSARY WHEN RUNNING APPLICATOR IN THE FIELD.
10. SPARE FEED CAM STORAGE LOCATION REFER TO INSTRUCTION SHEET FOR ADDITIONAL INFORMATION.
11. TO CONVERT THE APPLICATOR TO A NON-CARRIER CUTTING STYLE, REMOVE ITEM 13 AND ATTACH TO THE LOCATION ON THE BACK SIDE OF THE HOUSING. REFER TO INSTRUCTION SHEET FOR ADDITIONAL INFORMATION.
12. WHEN ASSEMBLING A NON CRIMP HEIGHT ADJUST APPLICATOR (-6) USE SHIMS FROM ITEM 260 TO ACHIEVE A NOMINAL SHIM HEIGHT OF 4.7.
13. TERMINAL LUBRICANT IS RECOMMENDED.

**\*WARNING**  
 ON INSTALLATION, SET WIRE DISC, ITEM 40 TO LARGEST WIRE SIZE SETTING. USE OF SETTINGS BELOW MINIMUM REQUIRED CRIMP HEIGHT SETTING WILL CAUSE DAMAGE TO CRIMP TOOLING.

-77	-7	-6	-5	-2	-1	PART NO	DESCRIPTION	ITEM NO
-	-	1	-	-	-	2119957-2	APPLICATOR SHIM PACK	260
-	1	-	1	1	1	8-21084-0	O-RING, .676 ID, .070 DIA. MAT.	252
-	-	-	-	1	-	2119640-1	PUSH ROD, AIR FEED	250
-	-	-	-	1	-	1803259-1	BUSHING, FLANGED	249
-	-	-	-	1	-	2119641-1	FEED CAM, AIR FEED	248
-	1	-	1	1	1	2119798-1	DETENT PIN	247
-	1	-	1	1	1	1-22279-3	SPRING, COMPRESSION	246

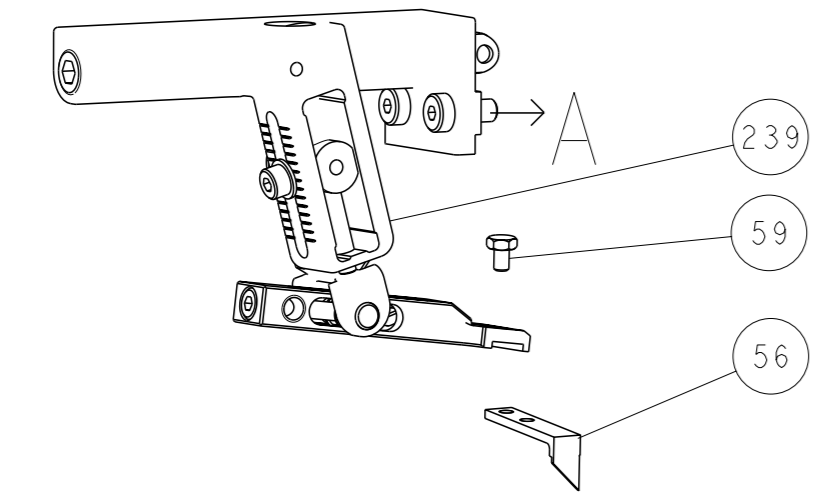
**ATLANTIC VERSION**  
 Shown on sheets 1 of 4 & 2 of 4  
 (Pacific version shown on sheets 3 of 4 & 4 of 4)

SET UP GAUGE 2119599-1			LOC A	DIST 66	REVISIONS						
P	LN#	DESCRIPTION	DATE	OWN	APVD						
	A	RELEASED	2/FEB/2018	BW	TE						
-	-	1	-	-	-	2119758-1	RAM, AMP STYLE, SIDE FEED, NON-ADJ.	245			
-	1	1	1	1	1	2119082-4	CAM, SNAIL, INSULATION ADJUSTMENT	244			
-	1	1	1	1	1	2079764-1	WASHER, WAVE SPRING, CREST-TO-CREST	243			
-	1	1	1	1	1	2119083-1	RETAINER, INSULATION DIAL	242			
-	1	1	1	1	1	7-18023-7	SCR, SKT HD CAP M3 X 4.0	241			
-	-	2	2	-	-	2168400-6	SHCS, LOW HEAD, RoHS, M5 X 16	240			
-	-	-	-	-	1	2119580-1	MECHANICAL FEED ASSEMBLY	239			
-	-	-	-	1	-	2063440-1	AIR FEED MODULE	238			
-	-	1	1	-	-	2119740-2	TAG, IDENTIFICATION	213			
-	-	1	1	-	-	1901094-3	SPACER, FEEDER	198			
-	-	-	-	2	-	21045-3	RING, RETAIN, EXTERN, 3/16 CRESCENT	172			
-	1	1	1	1	1	994969-1	MAGNET, RARE EARTH HIGH ENERGY	166			
-	REF	REF	REF	REF	REF	994970-2	COUNTER, MAGNETIC	164			
-	-	-	-	1	-	240638-1	SPRING, FEED FINGER	163			
-	-	-	-	1	-	3-23627-7	PIN, RETAIN, GRVD, 3/16 X .854	137			
-	-	-	-	1	-	2119799-1	HOLDER, FEED FINGER, AF	136			
-	-	REF	REF	-	-	SEE NOTE 4	MEMORY CHIP, PROGRAMMED	135			
-	-	1	1	-	-	1633743-1	SERVO FEED LATCH ASM	133			
-	-	REF	REF	-	-	2119944-1	FEED FINGER ASSEMBLY, SF	117			
-	1	1	1	1	1	2119955-1	ASSY, LUBRICATOR, SIDE FEED	113			
-	1	1	1	1	1	1-690438-0	FRONT STRIP GUIDE	96			
-	1	1	1	1	1	455888-5	SPACER, CRIMPER	82			
-	1	1	1	1	1	2119956-1	DOCUMENTATION PACKAGE	71			
-	1	1	1	1	1	2119791-9	DEPRESSOR, WIRE	70			
-	1	1	1	1	1	2119943-1	WASHER, SPACER	69			
-	1	-	-	1	1	2119740-1	TAG, IDENTIFICATION	67			
-	2	2	2	2	2	2168078-1	SCREW, DRIVE, RH, RoHS, 2 x .188	66			
-	1	-	1	1	1	2119793-1	LIMITER, ADJUSTMENT BOLT	63			
-	3	-	3	3	3	992763-5	SCR, SET, SOC, CONE PNT, M3 X 4.0	62			
-	1	1	1	1	1	2079383-4	SCR, BHSC, RoHS (M4 X 8)	60			
-	-	-	-	1	1	5-18022-5	SCR, HEX HD CAP, M4 X 6.0	59			
-	-	-	-	1	1	1338685-1	PAWL, FEED	56			
-	4	4	4	4	4	2168400-1	SHCS, LOW HEAD, RoHS, M4 X 12	54			
-	2	2	2	2	2	1-2168083-0	SCR, SKT HD CAP, RoHS, M4 X 10	53			
-	1	1	1	1	1	5018030-1	NUT, HEX, REG, RoHS, M3	52			
-	1	1	1	1	1	811242-5	BUMPER, HOLD DOWN	51			
-	1	1	1	1	1	690753-2	SPACER, TONKER	50			
-	-	-	-	1	2	18023-9	SCR, SKT HD CAP M4 X 6.0	49			
-	-	-	-	1	-	2119652-1	FEED CAM, PRE FEED	48			
-	-	-	-	1	-	2119653-1	FEED CAM, POST FEED	47			
-	1	1	1	1	1	2119656-9	APPLICATOR BASIC ASSEMBLY, SF	46			
-	1	-	1	1	1	2119370-1	RAM, AMP STYLE, SIDE FEED	44			
-	1	1	1	1	1	2079383-7	SCR, BHSC, RoHS (M8 X 25)	41			
-	1	-	1	1	1	2119645-1	DISC, NUMBERED FA WIRE ADJUSTMENT	40			
-	1	-	1	1	1	2119957-1	APPLICATOR SHIM PACK	39			
-	1	1	1	1	1	2119644-1	RAM WASHER, PRECISION	38			
-	1	1	1	1	1	2119085-1	FA HEAD, ATLANTIC STYLE	37			
-	1	-	1	1	1	2119092-1	BOLT, ADJUSTMENT	35			
-	1	1	1	1	1	1752356-3	SUPPORT, TERMINAL	34			
-	2	2	2	2	2	2079383-5	SCR, BHSC, RoHS (M4 X 20)	33			
-	1	1	1	1	1	2161328-1	HEX HEAD, FLANGED, M5 X 8mm LONG	32			
-	1	1	1	1	1	1320908-3	SPACER, STRIP GUIDE	30			
-	1	1	1	1	1	2119959-5	ASSEMBLY, STRIP GUIDE	29			
-	1	1	1	1	1	455888-5	SPACER, CRIMPER	28			
-	2	2	2	2	2	22281-8	SPRING, COMPRESSION	27			
-	1	1	1	1	1	240792-1	DRAG, TERMINAL	25			
-	1	1	1	1	1	1320928-2	STRIP GUIDE	24			
-	1	1	1	1	1	2168083-2	SCR, SKT HD CAP, RoHS, M4 X 8.0	21			
-	2	2	2	2	2	1-18028-2	WASHER, FLAT, REG M4	20			
-	1	1	1	1	1	2119533-1	STRIPPER, SIDE FEED	19			
-	1	1	1	1	1	2119806-1	INSERT, SHEAR	13			
-	1	1	1	1	1	3-22280-3	SPRING, COMPRESSION	12			
-	1	1	1	1	1	1-356885-4	STOP, SHEAR	11			
-	1	1	1	1	1	2119805-1	SHEAR HOLDER, FRONT	10			
-	1	1	1	1	1	1803095-1	FLOATING SHEAR, FRONT	9			
-	1	1	1	1	1	8-1803058-0	ANVIL, COMBINATION	8			
-	-	-	-	-	-	-	-	7			
-	-	-	-	-	-	-	-	6			
-	1	1	1	1	1	2119757-4	DEPRESSOR, SHEAR	5			
-	1	1	1	1	1	2-238011-2	BLOCK, CRIMPER SPACER	4			
-	1	1	1	1	1	4-1803246-9	CRIMPER, INSULATION F PREMIUM	3			
-	1	1	1	1	1	455888-5	SPACER, CRIMPER	2			
-	1	1	1	1	1	3-456404-0	CRIMPER, WIRE PREMIUM	1			
-77	-7	-6	-5	-2	-1	PART NO	DESCRIPTION	ITEM NO			

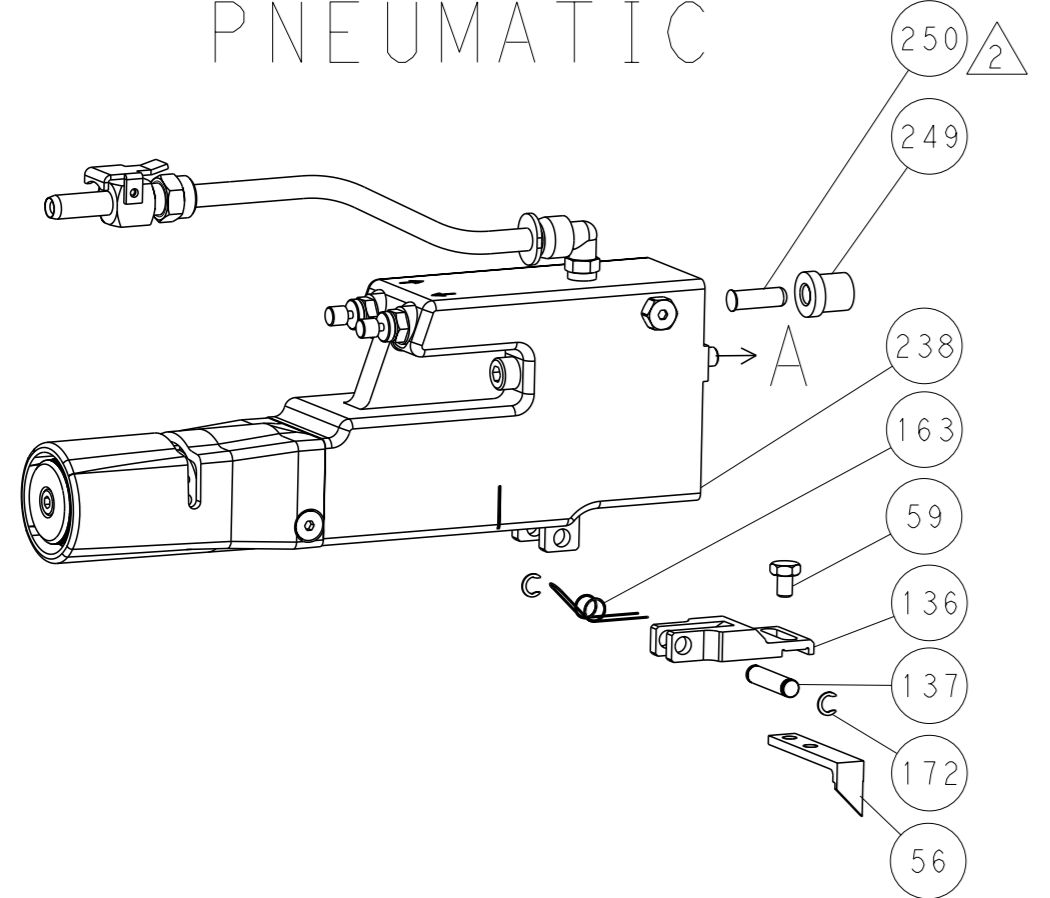
AMP 4805 REV 31MAR2000

LOC	DIST	REVISIONS			
A	66	REV	DATE	OWN	APVD
-	-	SEE SHEET 1	-	-	-

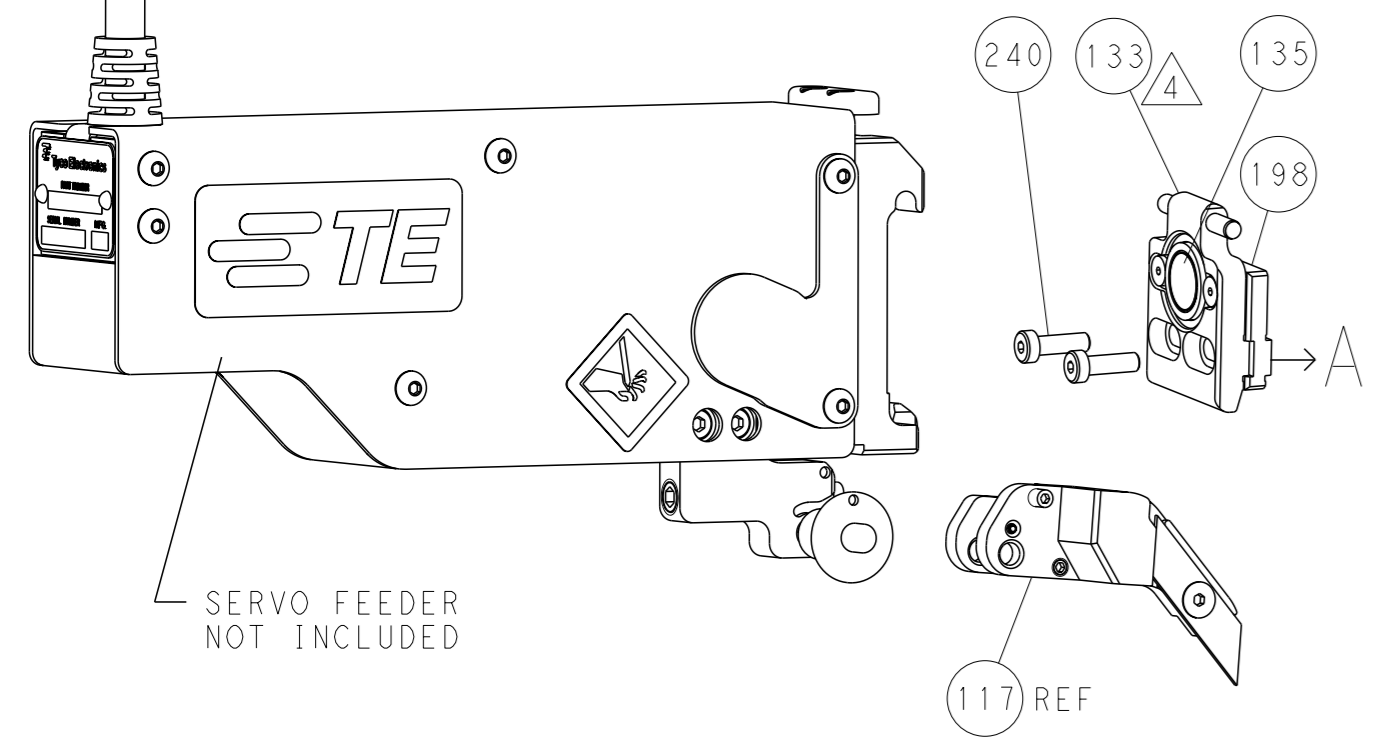
### FEED TYPE MECHANICAL



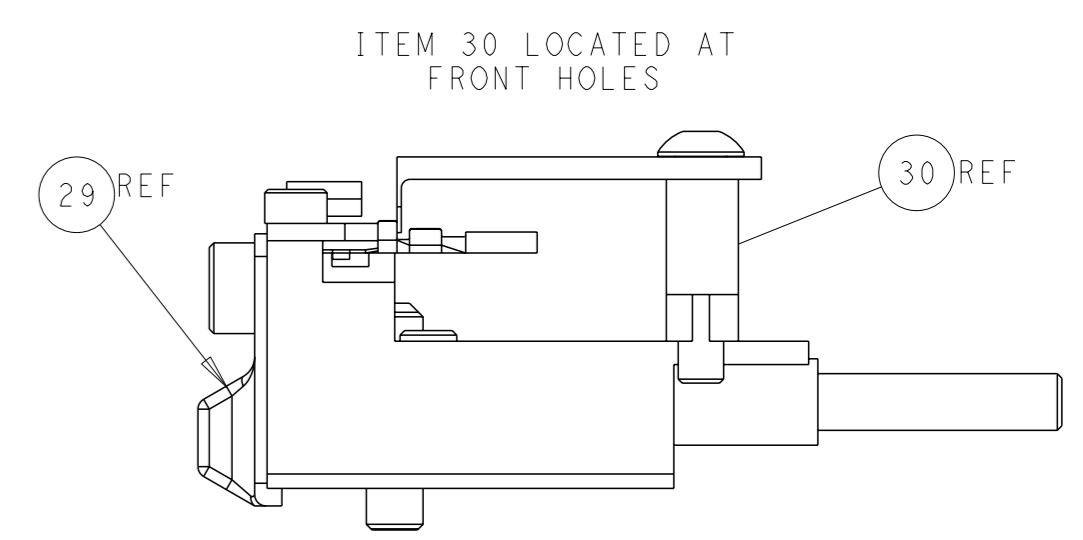
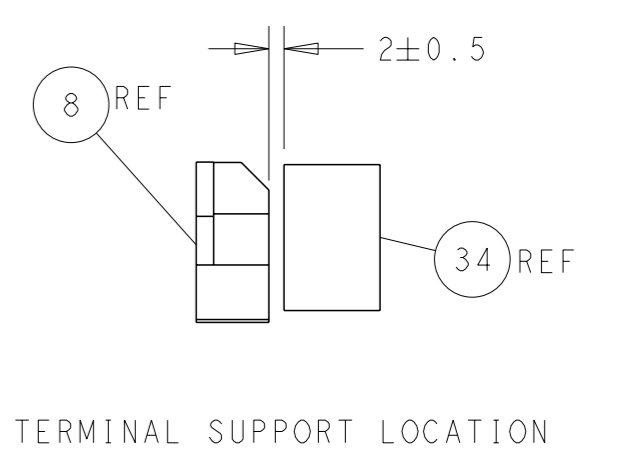
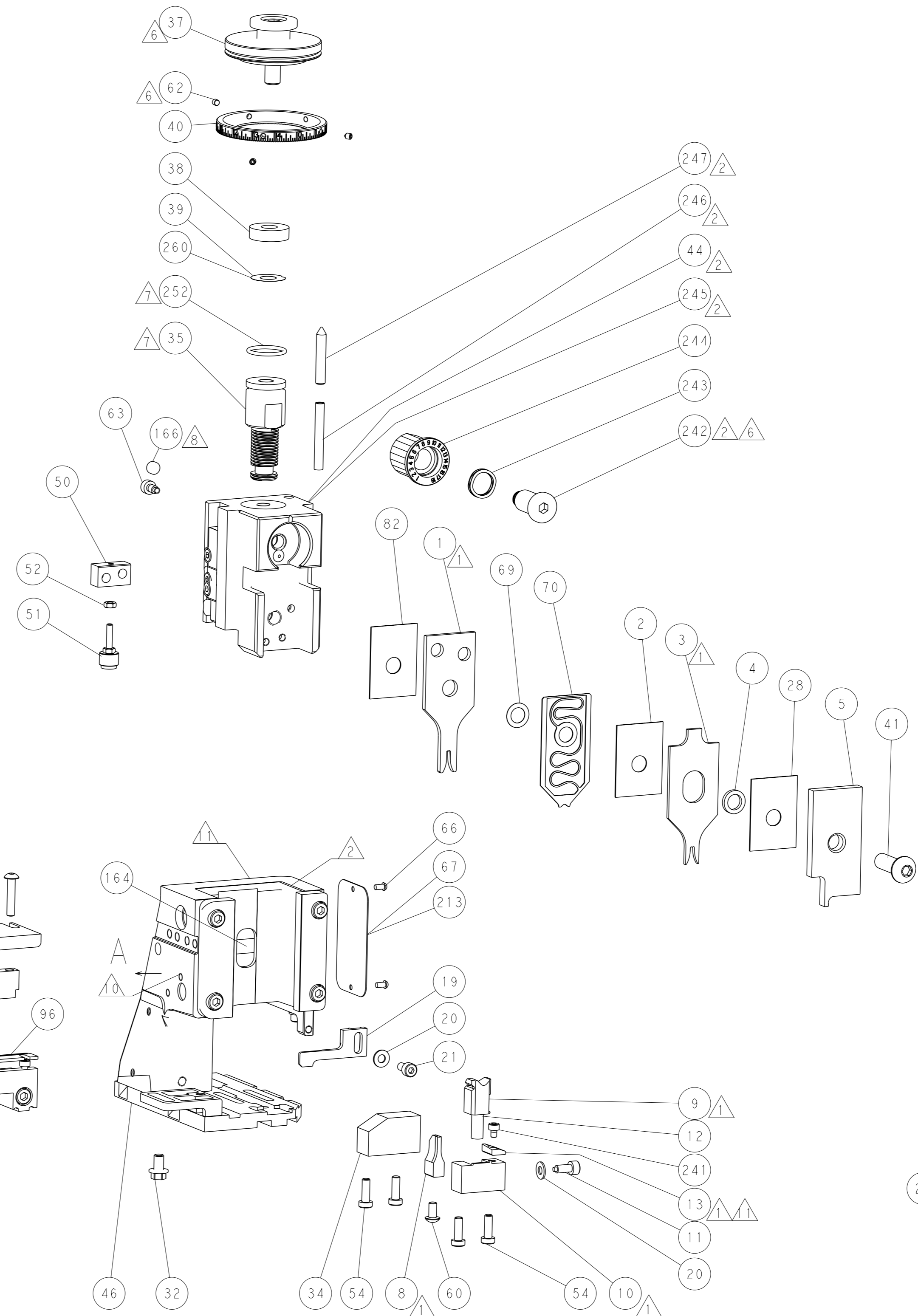
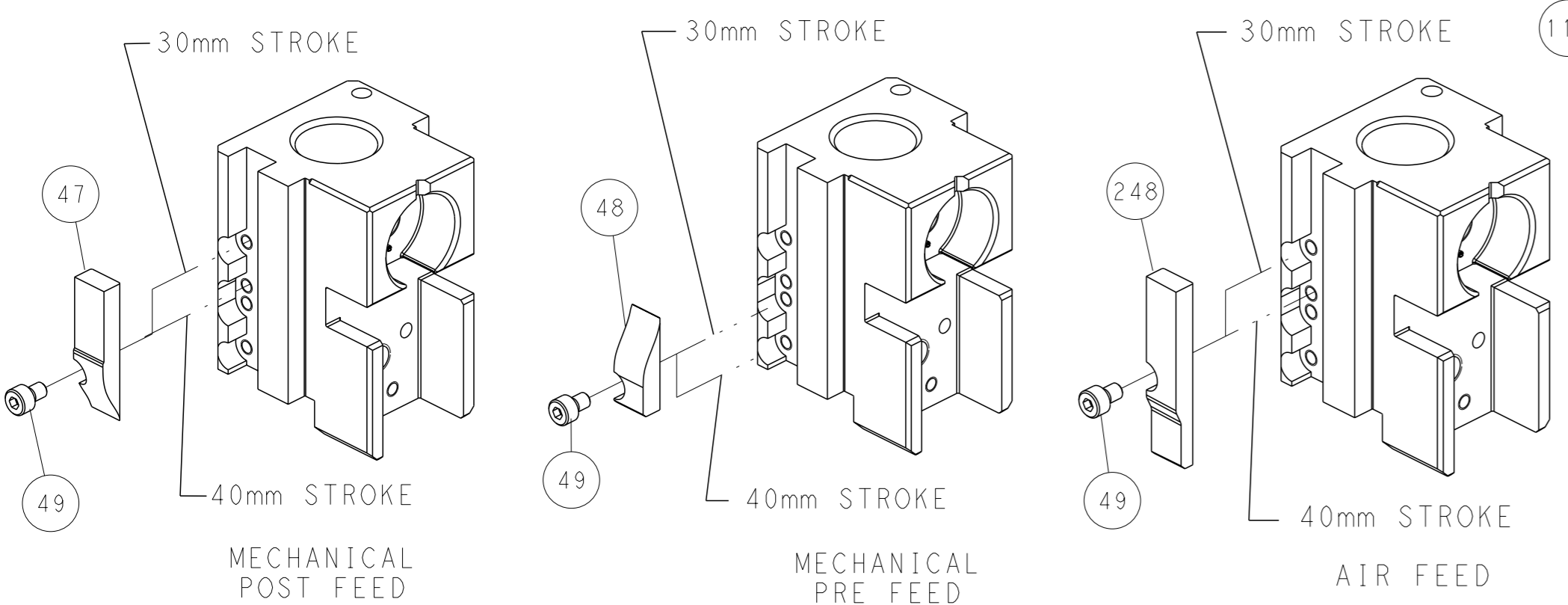
### PNEUMATIC



### SERVO LATCH PLATE



### CAM POSITIONS



**ATLANTIC VERSION**  
 Shown on sheets 1 of 4 & 2 of 4  
 (Pacific version shown on sheets 3 of 4 & 4 of 4)

<small>THIS DRAWING IS UNPUBLISHED. RELEASED FOR PUBLICATION 2018 BY TYCO ELECTRONICS CORPORATION. ALL RIGHTS RESERVED.</small>		OWN: B. WEAVER CHK: T. ELBIN APVD: T. ELBIN	DATE: 30 JAN 2018 DATE: 30 JAN 2018 DATE: 30 JAN 2018	NAME: Ocean Side Feed Applicator	TE Connectivity Harrisburg, PA 17105-3608
DIMENSIONS: mm TOLERANCES UNLESS OTHERWISE SPECIFIED: 0 PLC ± 1 PLC ± 2 PLC ± 3 PLC ± 4 PLC ± ANGLES ° ±	MATERIAL:	WEIGHT:	SIZE: A1 CAGE CODE: 00779 DRAWING NO: C=2837086	RESTRICTED TO:	SCALE: 1:2 SHEET: 2 of 4 REV: A

	PART NUMBER	REVISION	DESCRIPTION	FEED TYPE	CONVERT TO	PART NUMBERS REQUIRED					
	2-2837086-1	A	FINE CRIMP HEIGHT ADJUST	MECHANICAL	PNEUMATIC FEED	2119950-1	1338685-1	5-18022-5	2119641-2	2119799-1	2063440-1
	2-2837086-2	A	FINE CRIMP HEIGHT ADJUST	PNEUMATIC	SERVO LATCH PLATE	2119951-1	-	8-2837086-5	1901094-3	-	2168400-6 (QUANTITY 2)
					SMART APPLICATOR	2161326-1	-	8-2837086-4	-	-	
					MECHANICAL FEED	2119949-1	1338685-1	5-18022-5	2119653-2	-	
	2-2837086-5	A	FINE CRIMP HEIGHT ADJUST	SERVO LATCH PLATE <sup>4</sup>	SERVO LATCH PLATE	2119951-1	-	8-2837086-5	1901094-3	-	2168400-6 (QUANTITY 2)
					SMART APPLICATOR	2161326-1	-	8-2837086-4	-	-	
	2-2837086-7	A	FINE CRIMP HEIGHT ADJUST	NONE	-	-	-	-	-	-	-
7-2837086-7	A	CRIMP TOOLING KIT	-	-	-	-	-	-	-	-	

APPLICATOR DATA		
CRIMP	SIZE	TYPE
WIRE	1.78 mm (.070)	F
INSUL	2.36 mm (.093)	F
APPLICATOR INSTRUCTIONS 408-10389		

TERMINAL DATA: Escubedo TERMINAL ESCUBEDO CRIMP SPECIFICATION			
TERMINAL NAME: TERMINAL, HEMBRA 2.8			
WIRE STRIP LENGTH 3.00-4.00 mm (.118-.157 IN)	TERMINAL INSULATION DIAMETER RANGE Ø1.50-2.00 mm (.059-.079 IN)		
TERMINAL APPLICATION SPECIFICATION 4605 DATA SHT Rev 1	-		
TERMINALS APPLIED <sup>12</sup>			
TE TERMINAL	Escubedo TERMINAL	TE TERMINAL	Escubedo TERMINAL
2113463-1	4605.00	2113463-2	4605.01
2113463-3	4605.30	2113463-4	4605.31

WIRE SIZE	CRIMP HEIGHT mm [INCH]	CRIMP HEIGHT REFERENCE SETTING
0.60mm2	1.10+/-0.05 [.043+/- .002]	6.7
0.5mm2 OR 20 AWG	1.05+/-0.05 [.041+/- .002]	7.2
0.3mm2 OR 22 AWG	1.00+/-0.05 [.039+/- .002]	7.8

- <sup>1</sup> RECOMMENDED SPARE PARTS
- <sup>2</sup> GREASE BEARING SURFACES LIGHTLY
3. LUBRICATE DAILY PER THE APPLICATOR INSTRUCTION SHEET SUPPLIED WITH THE APPLICATOR.
- <sup>4</sup> APPLICATOR SPECIFIC DATA TO BE ENTERED INTO BLANK MEMORY CHIP AT ASSEMBLY. SEE BELOW FOR PART NUMBER:  
 MECHANICAL FEED WITH "SMART APPLICATOR" CONVERSION: 8-2837086-4  
 PNEUMATIC FEED WITH "SMART APPLICATOR" CONVERSION: 8-2837086-4  
 SERVO FEED WITH "FINE CRIMP HEIGHT ADJUST": 8-2837086-5
5. ADJUSTMENT OF THE STRIPPER MAY BE REQUIRED WHEN MOVING THE APPLICATOR BETWEEN BENCH AND LEADMAKER APPLICATIONS.
- <sup>6</sup> APPLY PART NUMBER 1-23419-5 LOCTITE TO THREADS OF ITEM 62. APPLY PART NUMBER 2-23419-6 LOCTITE TO THREADS OF ITEM 242.
- <sup>7</sup> GREASE THREADS, GROOVE AND O-RING ON ITEMS 139 & 152.
- <sup>8</sup> MAGNET MUST BE ORIENTED CORRECTLY IN ORDER TO PROPERLY ACTUATE THE COUNTER.
- <sup>9</sup> CRIMP HEIGHT REFERENCE SETTING WAS THE SETTING USED WHEN THE APPLICATOR WAS QUALIFIED AT THE FACTORY. ADJUSTMENT MAY BE NECESSARY WHEN RUNNING APPLICATOR IN THE FIELD.
- <sup>10</sup> SPARE FEED CAM STORAGE LOCATION REFER TO INSTRUCTION SHEET FOR ADDITIONAL INFORMATION.
- <sup>11</sup> TO CONVERT THE APPLICATOR TO A NON-CARRIER CUTTING STYLE, REMOVE ITEM 13 AND ATTACH TO THE LOCATION ON BACK SIDE OF THE HOUSING. REFER TO INSTRUCTION SHEET FOR ADDITIONAL INFORMATION.
- <sup>12</sup> TERMINAL LUBRICANT IS RECOMMENDED.

**\*WARNING**  
 ON INSTALLATION, SET WIRE DISC, ITEM 40 TO LARGEST WIRE SIZE SETTING. USE OF SETTINGS BELOW MINIMUM REQUIRED CRIMP HEIGHT SETTING WILL CAUSE DAMAGE TO CRIMP TOOLING.

-	1	1	1	1	2119782-1	FINE ADJUST HEAD ASM, PACIFIC STYLE	251
-	-	-	-	-	2119640-1	PUSH ROD, AIR FEED	250
-	-	-	-	-	1803259-1	BUSHING, FLANGED	249
-	1	1	1	1	1-22279-3	SPRING, COMPRESSION	246
-	1	1	1	1	2119082-4	CAM, SNAIL, INSULATION ADJUSTMENT	244
-77	-27	-25	-22	-21	PART NO	DESCRIPTION	ITEM NO

PACIFIC VERSION  
 Shown on sheets 3 of 4 & 4 of 4  
 (Atlantic version shown on sheets 1 of 4 & 2 of 4)

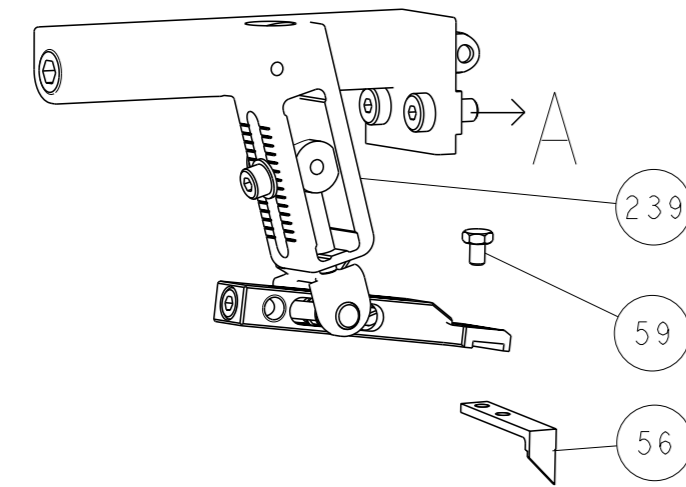
SET UP GAUGE	LOC	DIST	REVISONS					
2119599-1	A	66	P	LYR	DESCRIPTION	DATE	OWN	APVD
-	-	-	-	-	SEE SHEET 1	-	-	-

-	1	1	1	1	2079764-1	WASHER, WAVE SPRING, CREST-TO-CREST	243
-	1	1	1	1	2119083-1	RETAINER, INSULATION DIAL	242
-	1	1	1	1	7-18023-7	SCR, SKT HD CAP M3 X 4.0	241
-	-	2	-	-	2168400-6	SHCS, LOW HEAD, RoHS, M5 X 16	240
-	-	-	-	1	2119580-1	MECHANICAL FEED ASSEMBLY	239
-	-	-	-	1	2063440-1	AIR FEED MODULE	238
-	-	1	-	-	2119740-2	TAG, IDENTIFICATION	213
-	-	1	-	-	1901094-3	SPACER, FEEDER	198
-	-	-	2	-	21045-3	RING, RETAIN, EXTERN, 3/16 CRESCENT	172
-	1	1	1	1	994969-1	MAGNET, RARE EARTH HIGH ENERGY	166
-	REF	REF	REF	REF	994970-2	COUNTER, MAGNETIC	164
-	-	-	1	-	240638-1	SPRING, FEED FINGER	163
-	-	1	1	1	8-21084-1	O-RING, .801 ID, .070 DIA. MAT.	152
-	-	-	-	1	2119641-2	FEED CAM, AIR FEED	151
-	1	1	1	1	2119798-2	DETENT PIN	145
-	1	1	1	1	2079383-8	SCR, BHSC, RoHS (M4 X 16)	144
-	4	4	4	4	2168400-5	SHCS, LOW HEAD, RoHS, M4 X 20	143
-	-	-	-	1	2119653-2	FEED CAM, POST FEED	142
-	1	1	1	1	1-2119656-0	APPLICATOR BASIC ASSEMBLY, SF	141
-	1	1	1	1	2119650-1	RAM, ASIAN STYLE, SIDE FEED	140
-	1	1	1	1	2119092-2	BOLT, ADJUSTMENT	139
-	-	-	1	-	3-23627-7	PIN, RETAIN, GRVD, 3/16 X .854	137
-	-	-	1	-	2119799-1	HOLDER, FEED FINGER, AF	136
-	-	REF	-	-	SEE NOTE 4	MEMORY CHIP, PROGRAMMED	135
-	-	1	-	-	1633743-1	SERVO FEED LATCH ASM	133
-	-	REF	-	-	2119944-1	FEED FINGER ASSEMBLY, SF	117
-	1	1	1	1	2119955-1	ASSY, LUBRICATOR, SIDE FEED	113
-	1	1	1	1	1-690438-0	FRONT STRIP GUIDE	96
-	1	1	1	1	455888-5	SPACER, CRIMPER	82
-	1	1	1	1	2119956-1	DOCUMENTATION PACKAGE	71
-	1	1	1	1	2119791-9	DEPRESSOR, WIRE	70
-	1	1	1	1	2119943-1	WASHER, SPACER	69
-	1	-	1	1	2119740-1	TAG, IDENTIFICATION	67
-	2	2	2	2	2168078-1	SCREW, DRIVE, RH, RoHS, 2 x .188	66
-	1	1	1	1	2119793-1	LIMITER, ADJUSTMENT BOLT	63
-	3	3	3	3	992763-5	SCR, SET, SOC, CONE PNT, M3 X 4.0	62
-	-	-	1	1	5-18022-5	SCR, HEX HD CAP, M4 X 6.0	59
-	-	-	1	1	1338685-1	PAWL, FEED	56
-	2	2	2	2	1-2168083-0	SCR, SKT HD CAP, RoHS, M4 X 10	53
-	1	1	1	1	5018030-1	NUT, HEX, REG, RoHS, M3	52
-	1	1	1	1	811242-5	BUMPER, HOLD DOWN	51
-	1	1	1	1	690753-2	SPACER, TONKER	50
-	-	-	1	2	18023-9	SCR, SKT HD CAP M4 X 6.0	49
-	-	-	-	1	2119652-1	FEED CAM, PRE FEED	48
-	1	1	1	1	2079383-7	SCR, BHSC, RoHS (M8 X 25)	41
-	1	1	1	1	2119645-1	DISC, NUMBERED FA WIRE ADJUSTMENT	40
-	1	1	1	1	2119957-1	APPLICATOR SHIM PACK	39
-	1	1	1	1	2119644-1	RAM WASHER, PRECISION	38
-	1	1	1	1	1752356-3	SUPPORT, TERMINAL	34
-	2	2	2	2	2079383-5	SCR, BHSC, RoHS (M4 X 20)	33
-	1	1	1	1	2161328-1	HEX HEAD, FLANGED, M5 X 8mm LONG	32
-	1	1	1	1	1320908-3	SPACER, STRIP GUIDE	30
-	1	1	1	1	2119959-5	ASSEMBLY, STRIP GUIDE	29
-	1	1	1	1	455888-5	SPACER, CRIMPER	28
-	2	2	2	2	22281-8	SPRING, COMPRESSION	27
-	1	1	1	1	240792-1	DRAG, TERMINAL	25
-	1	1	1	1	1320928-2	STRIP GUIDE	24
-	1	1	1	1	2168083-2	SCR, SKT HD CAP, RoHS, M4 X 8.0	21
-	2	2	2	2	1-18028-2	WASHER, FLAT, REG M4	20
-	1	1	1	1	2119533-1	STRIPPER, SIDE FEED	19
-	1	1	1	1	2119806-1	INSERT, SHEAR	13
-	1	1	1	1	3-22280-3	SPRING, COMPRESSION	12
-	1	1	1	1	1-356885-4	STOP, SHEAR	11
-	1	1	1	1	2119805-1	SHEAR HOLDER, FRONT	10
-	1	1	1	1	1803095-1	FLOATING SHEAR, FRONT	9
-	1	1	1	1	8-1803058-0	ANVIL, COMBINATION	8
-	-	-	-	-	-	-	7
-	-	-	-	-	-	-	6
-	1	1	1	1	2119757-4	DEPRESSOR, SHEAR	5
-	1	1	1	1	2-238011-2	BLOCK, CRIMPER SPACER	4
-	1	1	1	1	4-1803246-9	CRIMPER, INSULATION F PREMIUM	3
-	1	1	1	1	455888-5	SPACER, CRIMPER	2
-	1	1	1	1	3-456404-0	CRIMPER, WIRE PREMIUM	1

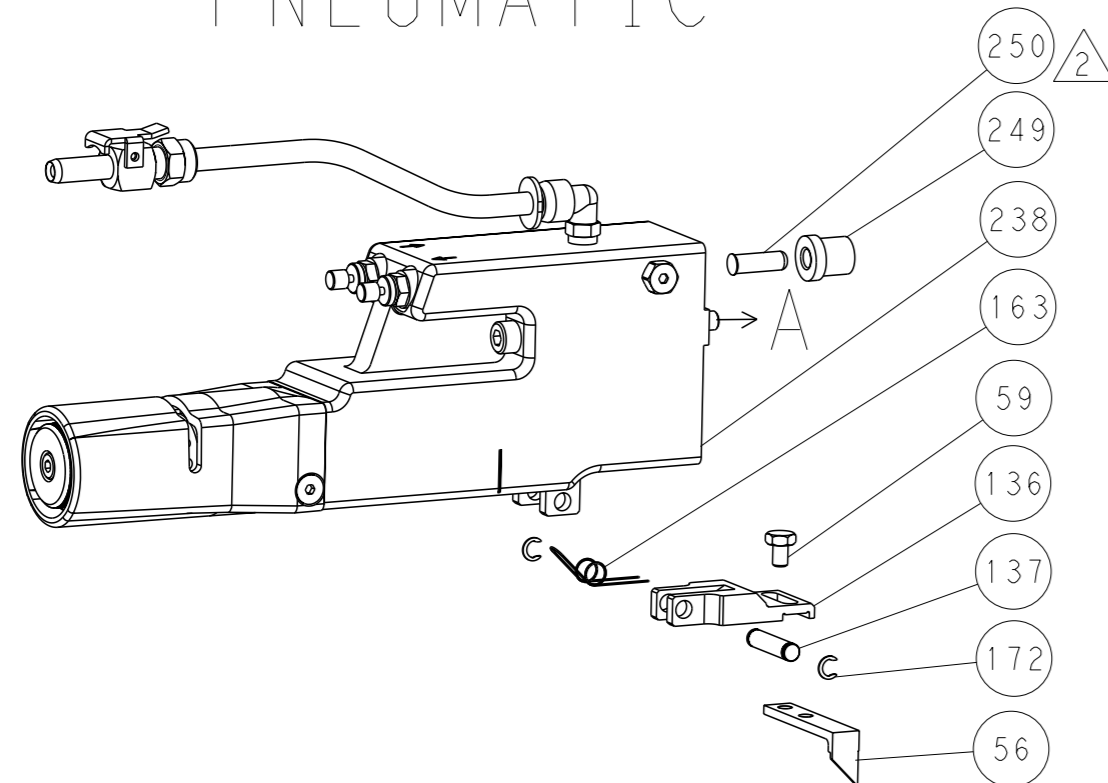
DIMENSIONS:		TOLERANCES UNLESS OTHERWISE SPECIFIED:		OWN		30JAN2018	
mm		0 PLC ±		B. WEAVER		30JAN2018	
		1 PLC ±		C.H.		30JAN2018	
		2 PLC ±		T. ELBIN			
		3 PLC ±		APVD		30JAN2018	
		4 PLC ±		NAME		Ocean Side Feed	
		ANGLES		PRODUCT SPEC		Applicator	
MATERIAL		FINISH		APPLICATION SPEC		SIZE	
						A1	
				WEIGHT		CAGE CODE	
						00779	
				SCALE		DRAWING NO	
				1:2		©=2837086	
Customer Accessible Production Drawing				SHEET 3		REV A	

REVISONS		DATE	OWN	APVD
LOC	DIST			
A	66			
P	LYR			
		DESCRIPTION		
		SEE SHEET 1		

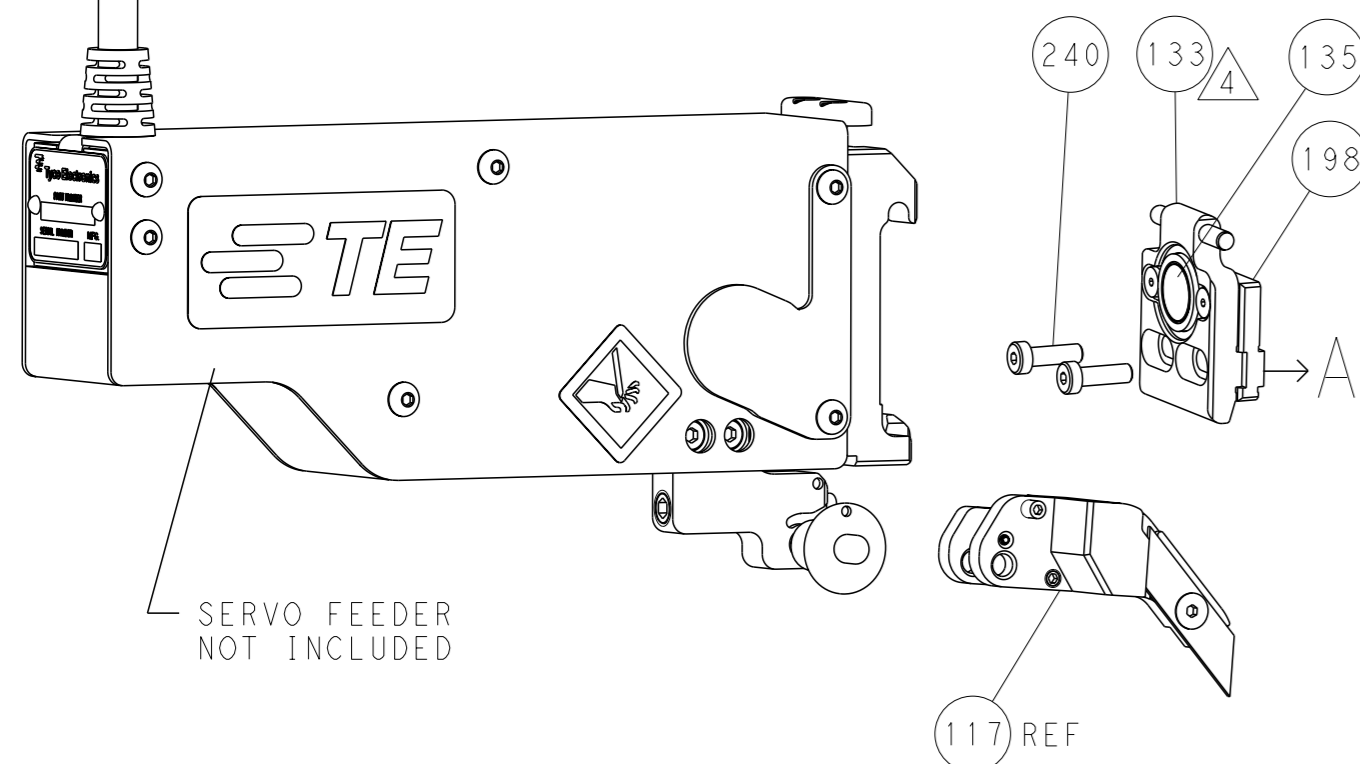
# FEED TYPE MECHANICAL



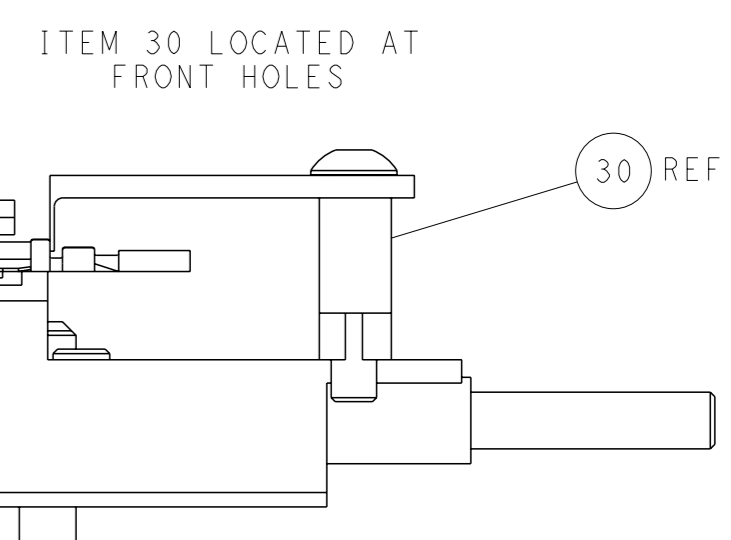
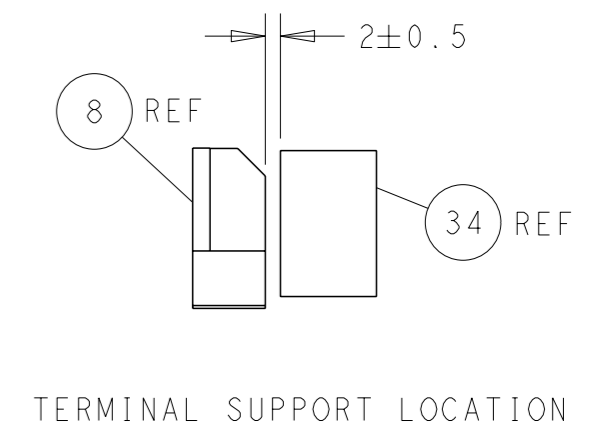
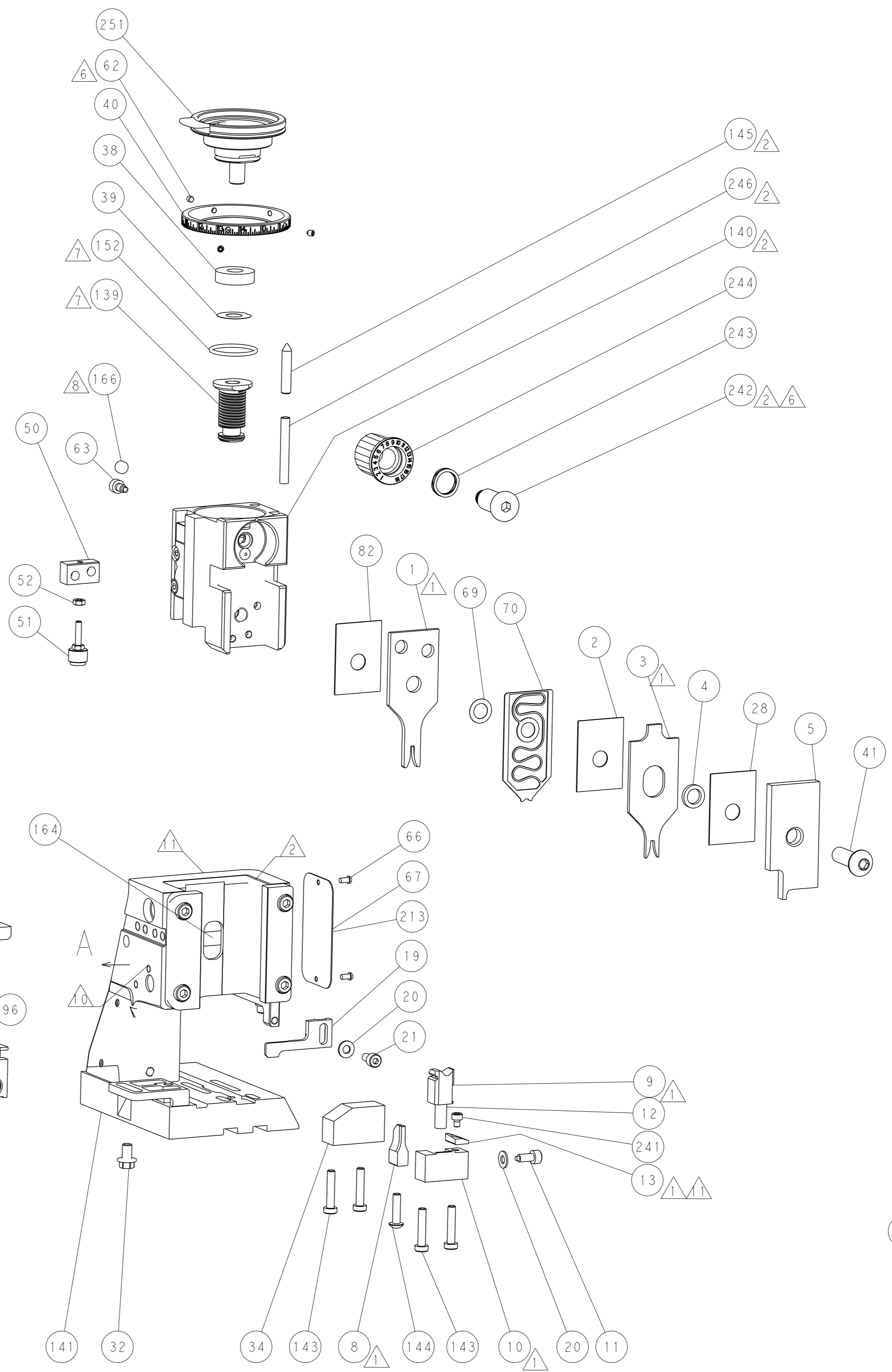
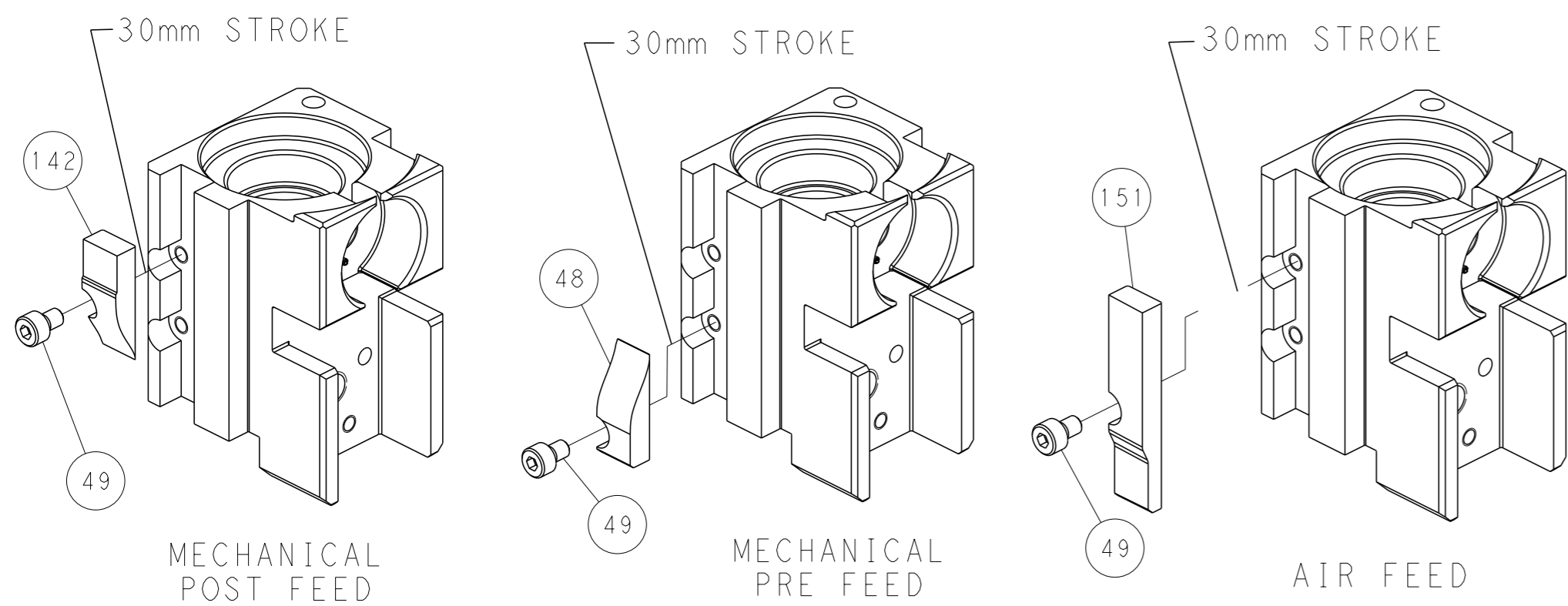
# PNEUMATIC



# SERVO LATCH PLATE



# CAM POSITIONS



**PACIFIC VERSION**  
 Shown on sheets 3 of 4 & 4 of 4  
 (Atlantic version shown on sheets 1 of 4 & 2 of 4)

<small>THIS DRAWING IS A CONTROLLED DOCUMENT FOR TYCO ELECTRONICS CORPORATION. IT IS SUBJECT TO CHANGE AND THE CONTROL AND REVISIONS ORGANIZATION SHOULD BE CONTACTED FOR THE LATEST REVISION.</small>		OWN: B. WEAVER CHK: T. ELBIN APVD: T. ELBIN DATE: 30 JAN 2018	NAME: Ocean Side Feed Applicator SIZE: A1 CAGE CODE: 00779 DRAWING NO: C=2837086	RESTRICTED TO: - SCALE: 1:2 SHEET: 4 of 4 REV: A
DIMENSIONS: mm TOLERANCES UNLESS OTHERWISE SPECIFIED: 0 PLC ± 1 PLC ± 2 PLC ± 3 PLC ± 4 PLC ± ANGLES FINISH ±	WEIGHT: - MATERIAL: -	APPLICATION SPEC: - PRODUCT SPEC: -	TE Connectivity Harrisburg, PA 17105-3608	Customer Accessible Production Drawing