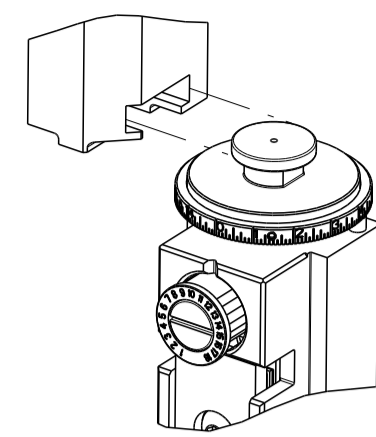


PART NUMBER	REVISION	DESCRIPTION	FEED TYPE
2836950-2	B	FINE CRIMP HEIGHT ADJUST	PNEUMATIC
7-2836950-2	B	PNEUMATIC AND CRIMP TOOLING KIT	PNEUMATIC
7-2836950-7	A	CRIMP TOOLING KIT	-

ATLANTIC VERSION TERMINATOR INTERFACE ADAPTER



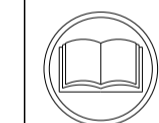
APPLICATOR DATA		
CRIMP	SIZE	TYPE
WIRE	4.88 mm [.192]	F
INSUL	7.70 mm [.303]	O

APPLICATOR INSTRUCTIONS
408-35042

TERMINAL DATA: KOSTAL (LEAR) TERMINAL		KOSTAL CRIMP SPECIFICATION	
TERMINAL NAME: LSK & RECEPTACLE AND TAB CONTACTS			
WIRE STRIP LENGTH		TERMINAL INSULATION DIAMETER RANGE	
8.00-9.00 mm [.315-.354 IN]		Ø3.40-5.00 mm [.134-.197 IN]	
TERMINAL APPLICATION SPECIFICATION	DOC00074177 Rev 02		

TERMINALS APPLIED				
TE TERMINAL	KOSTAL (LEAR) TERMINAL	TE SEAL	KOSTAL (LEAR) SEAL	SEAL INSULATION DIAMETER RANGE
1572762-1	23124472620	1572766-1	10800472742	Ø4.50-6.20mm [.177-.244 IN]
1572762-2	23125472620	1572766-2	10800472743	Ø4.00-4.40mm [.157-.173 IN]
1572762-3	23140472620	1572766-3	320451109	Ø4.50-6.20mm [.177-.244 IN]
1572762-4	3202519F0			

WIRE SIZE	CRIMP HEIGHT mm [INCH]	CRIMP HEIGHT REFERENCE SETTING
6.00mm2	3.17+/-0.05 [.125+/- .002]	5.1
10 AWG	2.95+/-0.05 [.116+/- .002]	7.3
4.00mm2	2.65+/-0.05 [.104+/- .002]	10.6
12 AWG	2.55+/-0.05 [.100+/- .002]	11.9



- RECOMMENDED SPARE PARTS
- REFER TO SUPPLIED INSTRUCTION SHEET FOR CLEANING, LUBRICATION AND STORAGE OF APPLICATOR.
- APPLY PART NUMBER 2-23419-6 LOCTITE TO THREADS OF ITEM 242.
- CRIMP HEIGHT REFERENCE SETTING WAS THE SETTING USED WHEN THE APPLICATOR WAS QUALIFIED AT THE FACTORY. ADJUSTMENT MAY BE NECESSARY WHEN RUNNING APPLICATOR IN THE FIELD.
- TERMINAL PITCH NOT COMPATIBLE WITH MECHANICAL FEED.
- THIS APPLICATOR DOES NOT CUT CARRIER STRIP.
- APPLY TORQ-SEAL IN ALLEN SOCKET TO FILL HOLE AFTER FLAT HD HAS BEEN ADJUSTED TO CORRECT HEIGHT AT QUALIFICATION.
- 8. UNLESS SPECIFIED OTHERWISE TORQUE VALUES SHALL BE USED PER DOCUMENT, 101-35000.

***WARNING**
ON INSTALLATION, SET WIRE DISC TO CRIMP HEIGHT REFERENCE SETTING FOR LARGEST WIRE SIZE. CRIMP HEIGHT REFERENCE SETTINGS GREATER THAN THE VALUE SHOWN MAY CAUSE DAMAGE TO THE CRIMP TOOLING, REFER TO THE INSTRUCTION SHEET FOR PROPER SETUP AND ADJUSTMENTS.

ATLANTIC VERSION
Shown on sheets 1 of 4 & 2 of 4
(Pacific version shown on sheets 3 of 4 & 4 of 4)

LOC	DIST	REVISIONS					
		P	LTN	DESCRIPTION	DATE	DWN	APVD
A	66			RELEASED	20NOV2017	TB	TE
				ECR-23-170883	30MAR2023	LG	RR

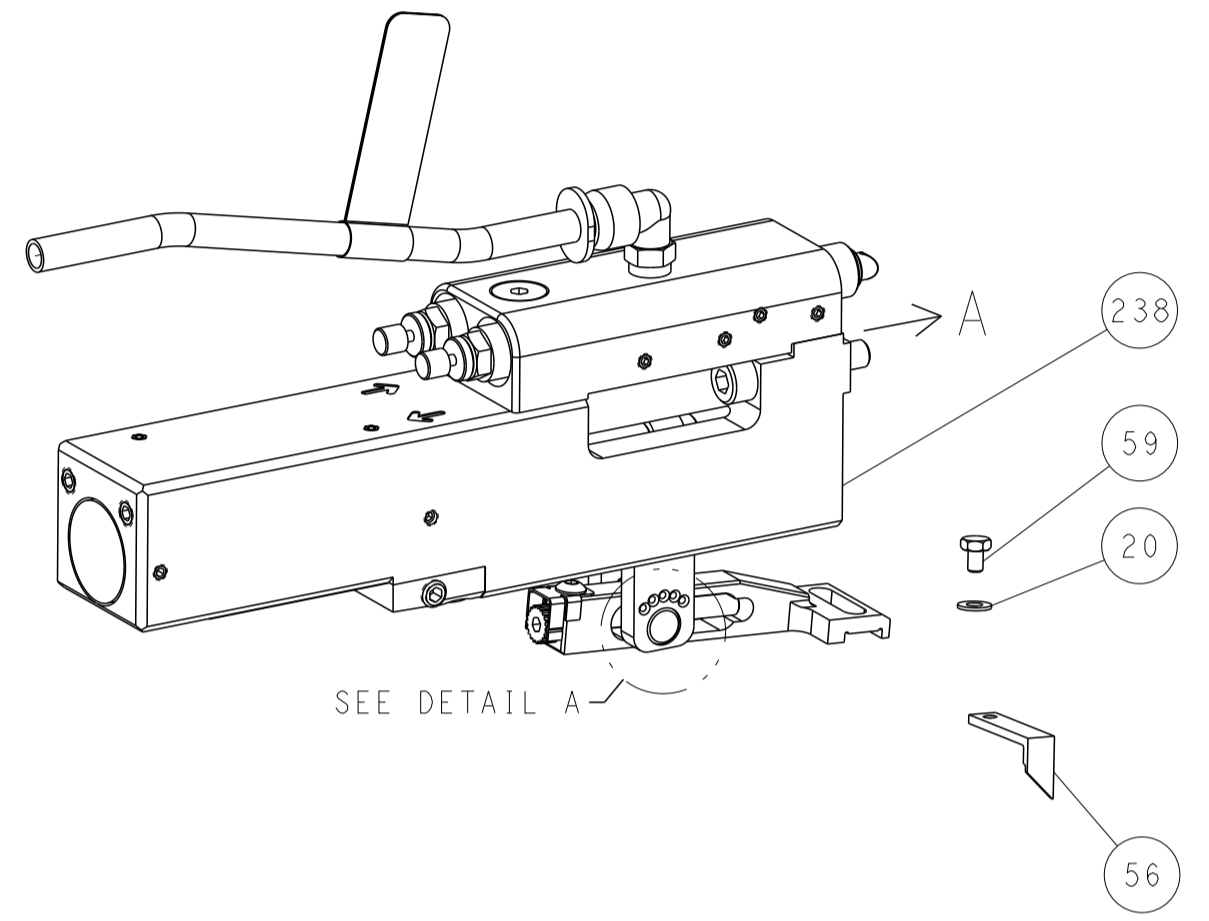
-	2	2	2168083-1	SCR, SKT HD CAP, RoHS, M3 X 8.0	269
-	1	1	1633782-7	FENCE	267
-	1	1	1803078-1	SPACER, PRECISION	259
-	1	1	2119641-1	FEED CAM, AIR FEED	248
-	1	1	2119082-3	CAM, SWAIL, INSULATION ADJUSTMENT	244
-	1	1	2079764-1	WASHER, WAVE SPRING, CREST-TO-CREST	243
-	1	1	2119083-1	RETAINER, INSULATION DIAL	242
-	1	1	2844940-2	AIR FEED MODULE	238
-	REF	REF	994970-2	COUNTER, MAGNETIC	164
-	1	1	1-22281-8	SPRING, COMPRESSION	121
-	1	1	455888-2	SPACER, CRIMPER	120
-	1	1	2844908-1	SCREW, LOCKING	99
-	1	1	2844907-1	POST, LOCKING	98
-	1	1	2-690438-2	FRONT STRIP GUIDE	96
-	2	2	2168083-1	SCR, SKT HD CAP, RoHS, M3 X 8.0	95
-	1	1	2168083-6	SCR, SKT HD CAP, RoHS, M5 X 65	93
-	2	2	1-2079383-8	SCR, BHSC, RoHS (M4 X 6)	79
-	1	1	1803096-1	EXTENSION PLATE	78
-	1	1	1803607-3	DOCUMENTATION PACKAGE	71
-	1	1	1-2119791-1	DEPRESSOR, WIRE	70
-	1	1	2119943-1	WASHER, SPACER	69
-	1	1	2119740-1	TAG, IDENTIFICATION	67
-	2	2	2168078-1	SCREW, DRIVE, RH, RoHS, 2 x .188	66
-	2	2	2-18032-5	SCR, SET, FLT PNT, M5 X 20.0	61
-	1	1	2168083-2	SCR, SKT HD CAP, RoHS, M4 X 8.0	60
-	1	1	5-18022-5	SCR, HEX HD CAP, M4 X 6.0	59
-	1	1	5018030-1	NUT, HEX, REG, RoHS, M3	58
-	1	1	2168083-1	SCR, SKT HD CAP, RoHS, M3 X 8.0	57
-	1	1	1-1338683-6	FEED PAWL	56
-	4	4	2168083-3	SCR, SKT HD CAP, RoHS, M4 X 12.0	54
-	2	2	2168083-9	SCR, SKT HD CAP, RoHS, M4 X 20	53
-	1	1	5018030-1	NUT, HEX, REG, RoHS, M3	52
-	1	1	811242-5	BUMPER, HOLD DOWN	51
-	1	1	690753-2	SPACER, TONKER	50
-	1	1	18023-9	SCR, SKT HD CAP M4 X 6.0	49
-	1	1	1-1803583-7	APPLICATOR BASIC ASSEMBLY, SF	46
-	1	1	1803515-2	RAM ASSEMBLY, SF ATLANTIC	44
-	1	1	1803602-2	SCR, BHSC, RoHS (M8 X 40)	41
-	1	1	1752356-2	SUPPORT, TERMINAL	34
-	2	2	2079383-5	SCR, BHSC, RoHS (M4 X 20)	33
-	2	2	2-2844962-8	SPACER, CYLINDRICAL, STRIP GUIDE	30
-	1	1	3-2844938-4	PLATE, STRIP GUIDE	29
-	1	1	1-455888-0	SPACER, CRIMPER	28
-	2	2	22283-1	SPRING, COMPRESSION	27
-	1	1	356835-1	LEVER, DRAG RELEASE	26
-	1	1	240792-1	DRAG, TERMINAL	25
-	1	1	1320928-2	STRIP GUIDE	24
-	1	1	980371-4	SCR, SKT HD SHLDR 5.0 DIA X 6.0	23
-	1	1	2168083-2	SCR, SKT HD CAP, RoHS, M4 X 8.0	21
-	3	3	1-18028-2	WASHER, FLAT, REG M4	20
-	1	1	1803013-1	STRIPPER, SIDE FEED	19
-	1	1	4-22280-7	SPRING, COMPRESSION	12
-	1	1	1-356885-4	STOP, SHEAR	11
-	1	1	2-2119805-5	SHEAR HOLDER, FRONT	10
-	1	1	1-318059-5	FLOATING SHEAR, FRONT	9
1	2	1	9-1633930-1	ANVIL, COMBINATION	8
-	1	1	6-240641-1	SPACER	7
-	-	-	-	-	6
-	1	1	1803080-1	DEPRESSOR, SHEAR	5
-	1	1	5-238011-9	BLOCK, CRIMPER SPACER	4
1	2	1	1-1803464-0	CRIMPER, INSULATION O	3
-	1	1	2-455888-1	SPACER, CRIMPER	2
1	2	1	4-1803470-2	CRIMPER, WIRE F	1

DIMENSIONS:		TOLERANCES UNLESS OTHERWISE SPECIFIED:		DWG		NAME	
mm	0 PLC ±	1 PLC ±	2 PLC ±	3 PLC ±	4 PLC ±	APVD	TE Connectivity
	ANGLES	FINISH		1	2	T. ELBIN	Harrisburg, PA 17105-3608
MATERIAL				1	2	T. ELBIN	Ocean Side Feed Applicator
				1	2	T. ELBIN	Customer Accessible Production Drawing
				1	2	T. ELBIN	SCALE 1:2 SHEET 1 OF 4 REV B

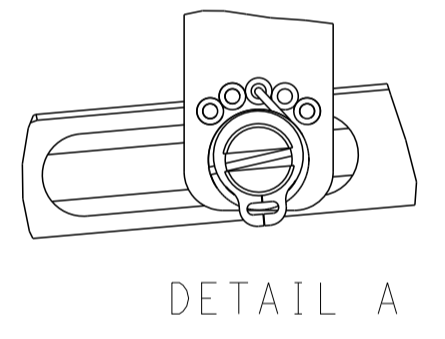
LOC	DIST	REVISIONS					
		P	LTN	DESCRIPTION	DATE	DWN	APVD
A	66	-	-	SEE SHEET 1	-	-	-

FEED TYPE

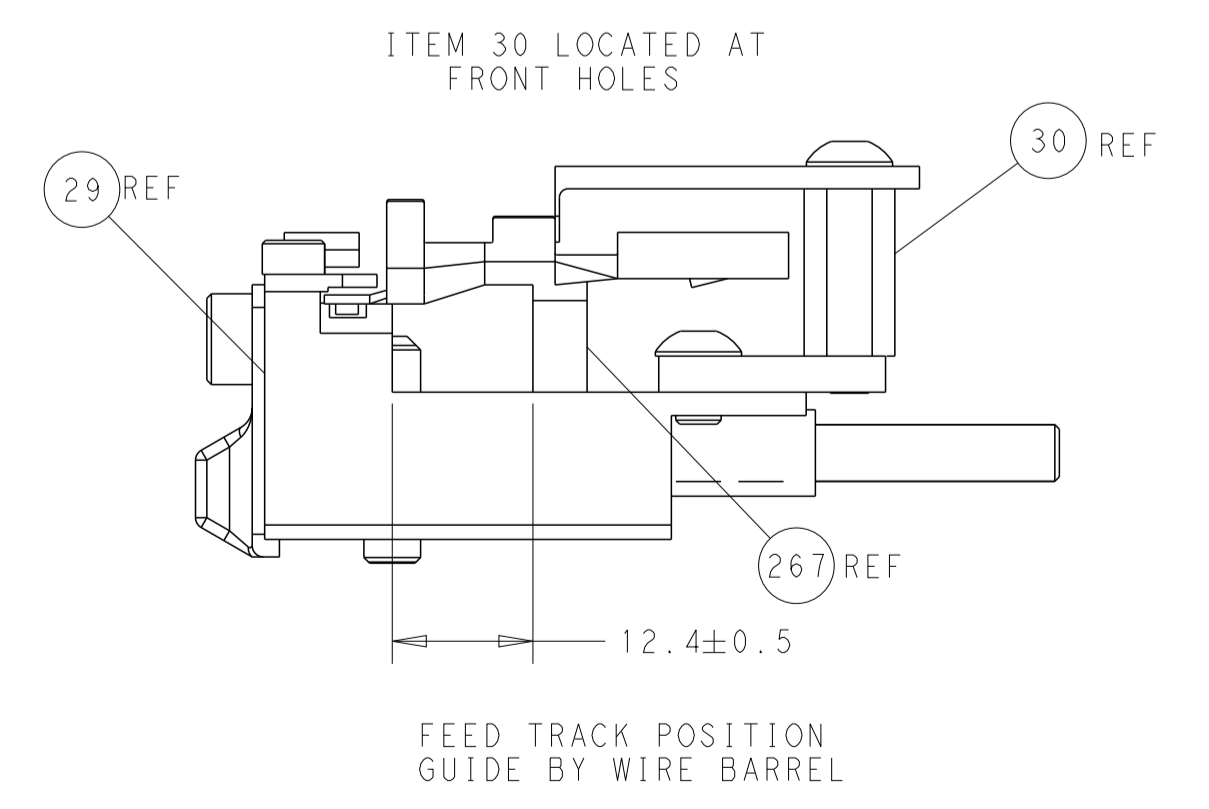
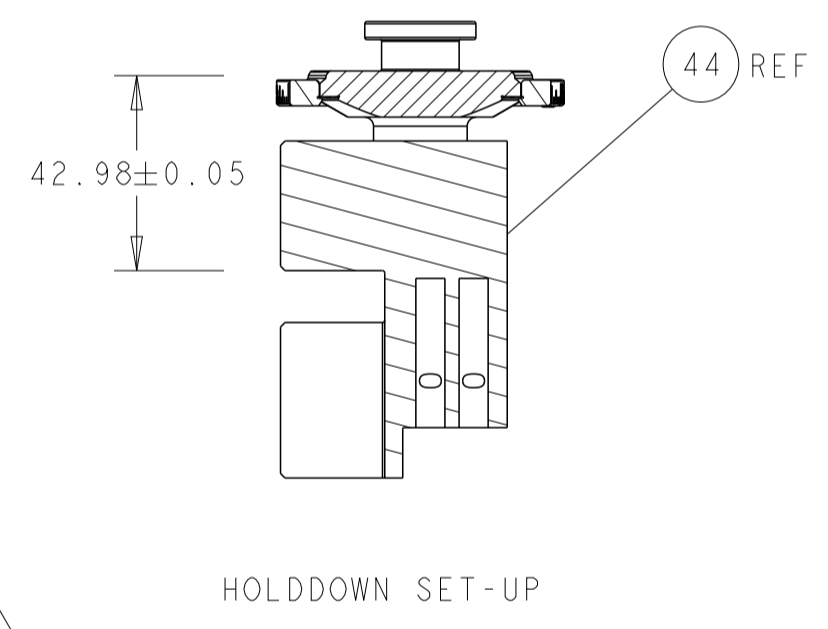
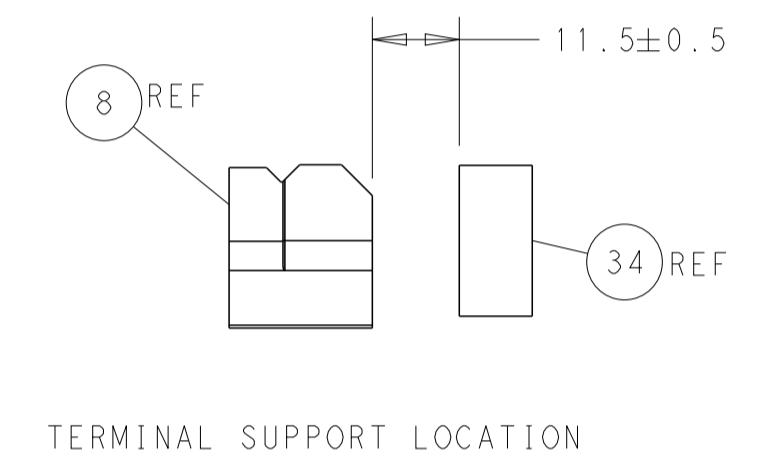
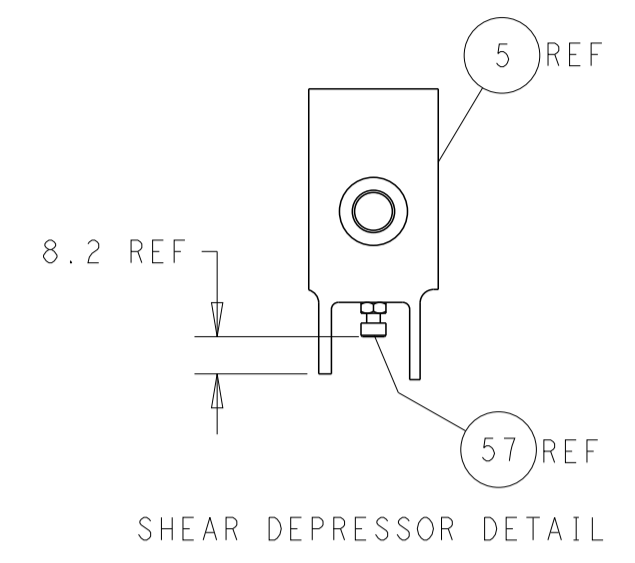
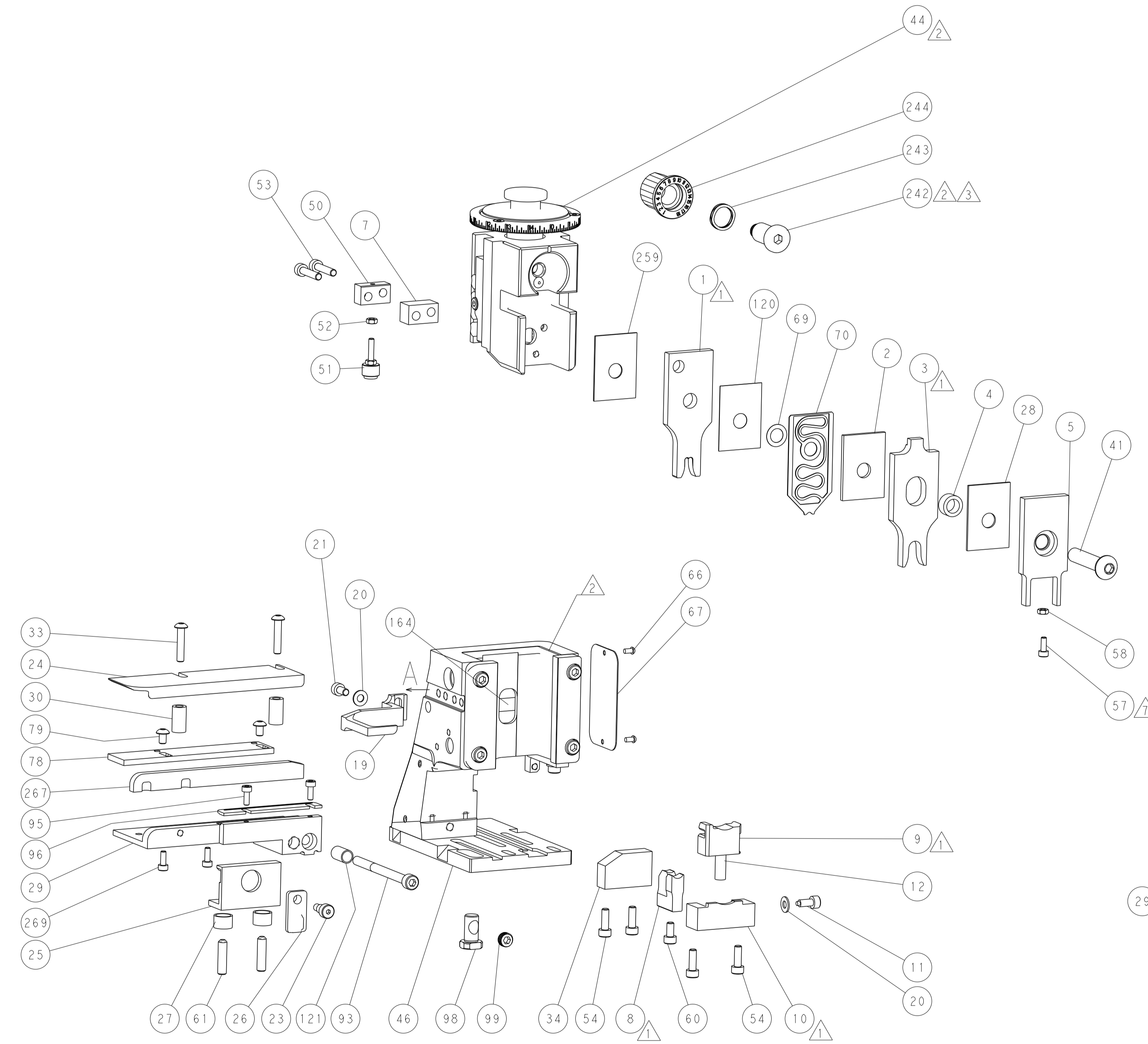
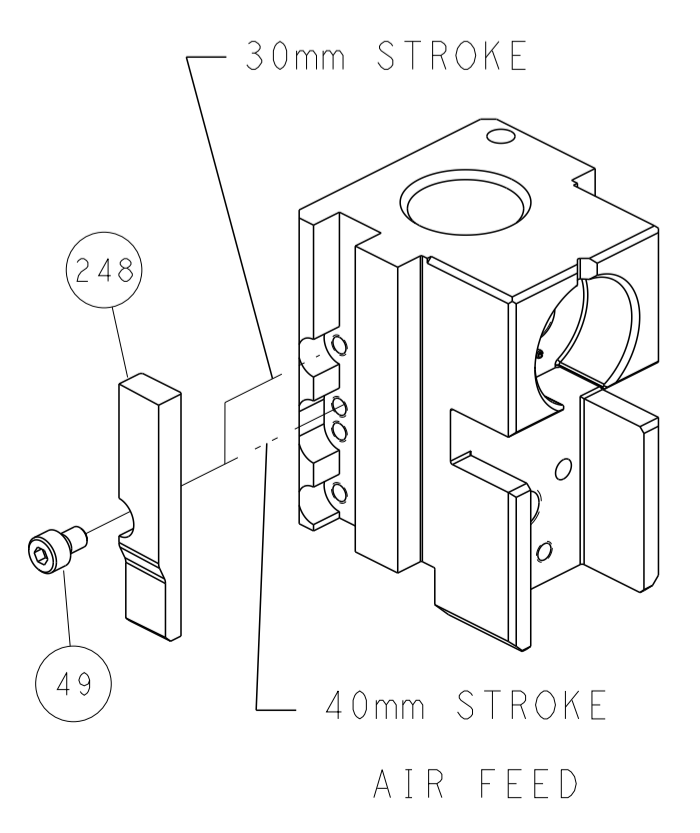
PNEUMATIC



FEED SPRING SETTING POSITION
(SHOWN FROM REAR SIDE)



CAM POSITION



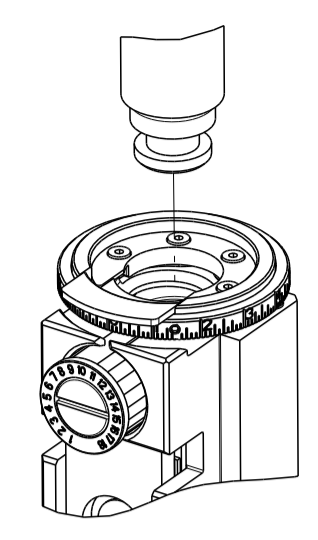
ATLANTIC VERSION
 Shown on sheets 1 of 4 & 2 of 4
 (Pacific version shown on sheets 3 of 4 & 4 of 4)

DIMENSIONS:		TOLERANCES UNLESS OTHERWISE SPECIFIED:		DWN B. WEAVER 13OCT2017		TE Connectivity	
mm	0 PLC ±	1 PLC ±	2 PLC ±	3 PLC ±	4 PLC ±	Harrisburg, PA 17105-3608	
	ANGLES ±	FINISH		CHK T. ELBIN 13OCT2017		NAME	
MATERIAL				APVD T. ELBIN 13OCT2017		Ocean Side Feed Applicator	
				PRODUCT SPEC		SIZE	
				APPLICATION SPEC		CAGE CODE DRAWING NO	
				WEIGHT		A1 00779 C=2836950	
				Customer Accessible Production Drawing		RESTRICTED TO	
				SCALE 1:2		SHEET 2 OF 4 REV B	

THIS DRAWING IS UNPUBLISHED. RELEASED FOR PUBLICATION 2017
 COPYRIGHT 2017 BY TYCO ELECTRONICS CORPORATION. ALL RIGHTS RESERVED.

PART NUMBER	REVISION	DESCRIPTION	FEED TYPE
2-2836950-2	B	FINE CRIMP HEIGHT ADJUST	PNEUMATIC
7-2836950-7	A	CRIMP TOOLING KIT	-

PACIFIC VERSION TERMINATOR
 INTERFACE ADAPTER



APPLICATOR DATA		
CRIMP	SIZE	TYPE
WIRE	4.88 mm [.192]	F
INSUL	7.70 mm [.303]	O
APPLICATOR INSTRUCTIONS 408-35042		

TERMINAL DATA: KOSTAL (LEAR) TERMINAL		KOSTAL CRIMP SPECIFICATION	
TERMINAL NAME: LSK 8 RECEPTACLE AND TAB CONTACTS			
WIRE STRIP LENGTH 8.00-9.00 mm [.315-.354 IN]		TERMINAL INSULATION DIAMETER RANGE 3.40-5.00 mm [.134-.197 IN]	
TERMINAL APPLICATION SPECIFICATION DOC00074177 Rev 02	-	-	-

TE TERMINAL	KOSTAL (LEAR) TERMINAL	TE SEAL	KOSTAL (LEAR) SEAL	SEAL INSULATION DIAMETER RANGE
1572762-1	23124472620	1572766-1	10800472742	4.50-6.20mm [.177-.244 IN]
1572762-2	23125472620	1572766-2	10800472743	4.00-4.40mm [.157-.173 IN]
1572762-3	23140472620	1572766-3	320451109	4.50-6.20mm [.177-.244 IN]
1572762-4	3202519F0			

WIRE SIZE	CRIMP HEIGHT mm [INCH]	CRIMP HEIGHT REFERENCE SETTING
6.00mm2	3.17 +/- 0.05 [.125 +/- .002]	5.1
10 AWG	2.95 +/- 0.05 [.116 +/- .002]	7.3
4.00mm2	2.65 +/- 0.05 [.104 +/- .002]	10.6
12 AWG	2.55 +/- 0.05 [.100 +/- .002]	11.9



- △ RECOMMENDED SPARE PARTS
 - △ REFER TO SUPPLIED INSTRUCTION SHEET FOR CLEANING, LUBRICATION AND STORAGE OF APPLICATOR.
 - △ APPLY PART NUMBER 2-23419-6 LOCTITE TO THREADS OF ITEM 242.
 - △ CRIMP HEIGHT REFERENCE SETTING WAS THE SETTING USED WHEN THE APPLICATOR WAS QUALIFIED AT THE FACTORY. ADJUSTMENT MAY BE NECESSARY WHEN RUNNING APPLICATOR IN THE FIELD.
 - △ TERMINAL PITCH NOT COMPATIBLE WITH MECHANICAL FEED.
 - △ THIS APPLICATOR DOES NOT CUT CARRIER STRIP..
 - △ APPLY TORQ-SEAL IN ALLEN SOCKET TO FILL HOLE AFTER FLAT HD HAS BEEN ADJUSTED TO CORRECT HEIGHT AT QUALIFICATION.
8. UNLESS SPECIFIED OTHERWISE TORQUE VALUES SHALL BE USED PER DOCUMENT, 101-35000.

***WARNING**
 ON INSTALLATION, SET WIRE DISC TO CRIMP HEIGHT REFERENCE SETTING FOR LARGEST WIRE SIZE. CRIMP HEIGHT REFERENCE SETTINGS GREATER THAN THE VALUE SHOWN MAY CAUSE DAMAGE TO THE CRIMP TOOLING, REFER TO THE INSTRUCTION SHEET FOR PROPER SETUP AND ADJUSTMENTS.

PACIFIC VERSION
 Shown on sheets 3 of 4 & 4 of 4
 (Atlantic version shown on sheets 1 of 4 & 2 of 4)

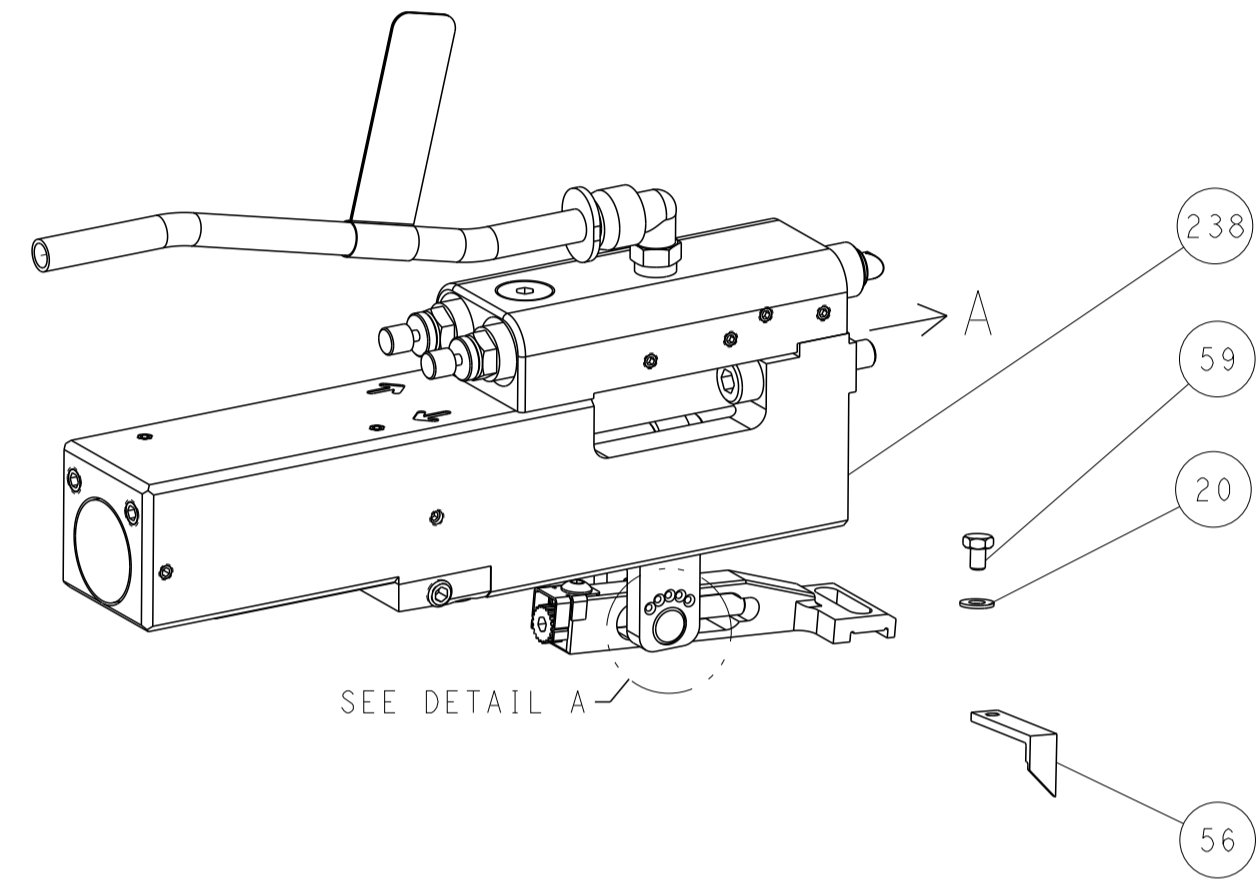
LOC	DIST	REVISIONS					
A	66	P	LTN	DESCRIPTION	DATE	OWN	APVD
		-		SEE SHEET 1	-	-	-

-	2	2168083-1	SCR, SKT HD CAP, RoHS, M3 X 8.0	269	
-	1	1633782-7	FENCE	267	
-	1	1803078-1	SPACER, PRECISION	259	
-	1	2119082-3	CAM, SNAIL, INSULATION ADJUSTMENT	244	
-	1	2079764-1	WASHER, WAVE SPRING, CREST-TO-CREST	243	
-	1	2119083-1	RETAINER, INSULATION DIAL	242	
-	1	2844940-2	AIR FEED MODULE	238	
-	REF	994970-2	COUNTER, MAGNETIC	164	
-	1	2119641-2	FEED CAM, AIR FEED	151	
-	1	2168083-8	SCR, SKT HD CAP, RoHS, M4 X 16	144	
-	4	2168083-9	SCR, SKT HD CAP, RoHS, M4 X 20	143	
-	1	1-1803583-8	APPLICATOR BASIC ASSEMBLY, SF	141	
-	1	1803516-2	RAM ASSEMBLY, SF PACIFIC	140	
-	1	1-22281-8	SPRING, COMPRESSION	121	
-	1	455888-2	SPACER, CRIMPER	120	
-	1	2844908-1	SCREW, LOCKING	99	
-	1	2844907-1	POST, LOCKING	98	
-	1	2-690438-2	FRONT STRIP GUIDE	96	
-	2	2168083-1	SCR, SKT HD CAP, RoHS, M3 X 8.0	95	
-	1	2168083-6	SCR, SKT HD CAP, RoHS, M5 X 65	93	
-	2	1-2079383-8	SCR, BHSC, RoHS (M4 X 6)	79	
-	1	1803096-1	EXTENSION PLATE	78	
-	1	1803607-3	DOCUMENTATION PACKAGE	71	
-	1	1-2119791-1	DEPRESSOR, WIRE	70	
-	1	2119943-1	WASHER, SPACER	69	
-	1	2119740-1	TAG IDENTIFICATION	67	
-	2	2168078-1	SCREW, DRIVE, RH, RoHS, 2 x .188	66	
-	2	2-18032-5	SCR, SET, FLT PNT, M5 X 20.0	61	
-	1	5-18022-5	SCR, HEX HD CAP, M4 X 6.0	59	
-	1	5018030-1	NUT, HEX, REG, RoHS, M3	58	
-	1	2168083-1	SCR, SKT HD CAP, RoHS, M3 X 8.0	57	
-	1	1-1338683-6	FEED PAWL	56	
-	2	2168083-9	SCR, SKT HD CAP, RoHS, M4 X 20	53	
-	1	5018030-1	NUT, HEX, REG, RoHS, M3	52	
-	1	811242-5	BUMPER, HOLD DOWN	51	
-	1	690753-2	SPACER, TONKER	50	
-	1	18023-9	SCR, SKT HD CAP M4 X 6.0	49	
-	1	1803602-2	SCR, BHSC, RoHS (M8 X 40)	41	
-	1	1752356-2	SUPPORT, TERMINAL	34	
-	2	2079383-5	SCR, BHSC, RoHS (M4 X 20)	33	
-	2	2-2844962-8	SPACER, CYLINDRICAL, STRIP GUIDE	30	
-	1	3-2844938-4	PLATE, STRIP GUIDE	29	
-	1	1-455888-0	SPACER, CRIMPER	28	
-	2	22283-1	SPRING, COMPRESSION	27	
-	1	356835-1	LEVER, DRAG RELEASE	26	
-	1	240792-1	DRAG, TERMINAL	25	
-	1	1320928-2	STRIP GUIDE	24	
-	1	980371-4	SCR, SKT HD SHLDR 5.0 DIA X 6.0	23	
-	1	2168083-2	SCR, SKT HD CAP, RoHS, M4 X 8.0	21	
-	3	1-18028-2	WASHER, FLAT, REG M4	20	
-	1	1803013-1	STRIPPER, SIDE FEED	19	
-	1	4-22280-7	SPRING, COMPRESSION	12	
-	1	1-356885-4	STOP, SHEAR	11	
-	1	2-2119805-5	SHEAR HOLDER, FRONT	10	
-	1	1-318059-5	FLOATING SHEAR, FRONT	9	
-	1	9-1633930-1	ANVIL, COMBINATION	8	
-	1	6-240641-1	SPACER	7	
-	-	-	-	6	
-	1	1803080-1	DEPRESSOR, SHEAR	5	
-	1	5-238011-9	BLOCK, CRIMPER SPACER	4	
-	1	1-1803464-0	CRIMPER, INSULATION O	3	
-	1	2-455888-1	SPACER, CRIMPER	2	
-	1	4-1803470-2	CRIMPER, WIRE F	1	
-	77	22	PART NO	DESCRIPTION	ITEM NO

DIMENSIONS: mm 		TOLERANCES UNLESS OTHERWISE SPECIFIED: 0 PLC ± 1 PLC ± 2 PLC ± 3 PLC ± 4 PLC ± ANGLES ± FINISH		DWG: B. WEAVER 13OCT2017 CHK: T. ELBIN 13OCT2017 APVD: T. ELBIN 13OCT2017 PRODUCT SPEC APPLICATION SPEC WEIGHT: - SCALE: 1:2 SHEET: 3 OF 4 REV: B		NAME: Ocean Side Feed Applicator SIZE: A1 CAGE CODE: 00779 DRAWING NO: 2836950 RESTRICTED TO: - Customer Accessible Production Drawing	
-----------------------	--	---	--	---	--	---	--

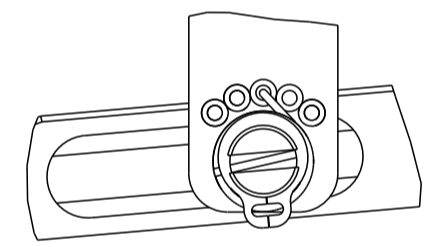
LOC	DIST	REVISIONS					
A	66	P	LTN	DESCRIPTION	DATE	OWN	APVD
		-		SEE SHEET 1	-	-	-

FEED TYPE PNEUMATIC



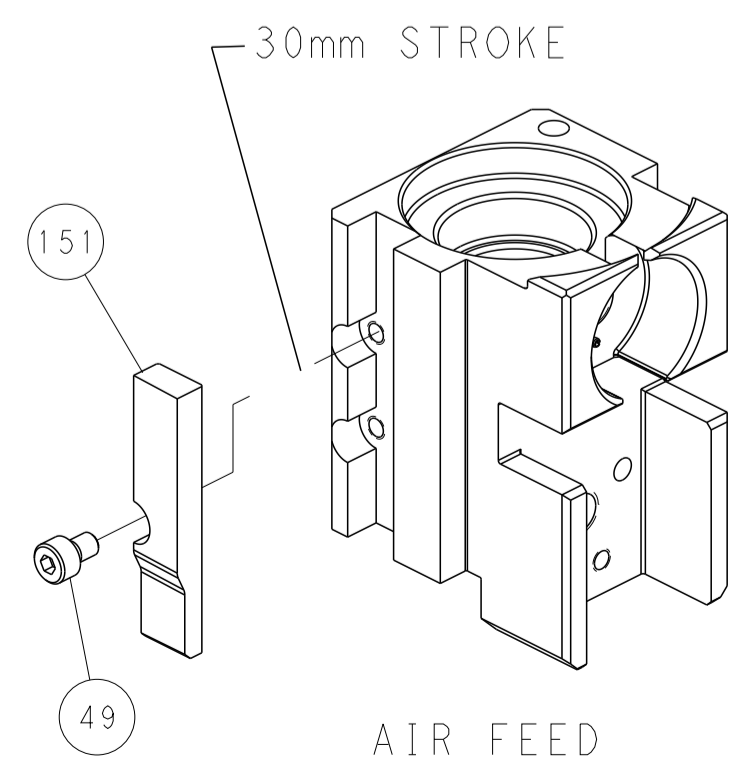
SEE DETAIL A

FEED SPRING SETTING POSITION (SHOWN FROM REAR SIDE)

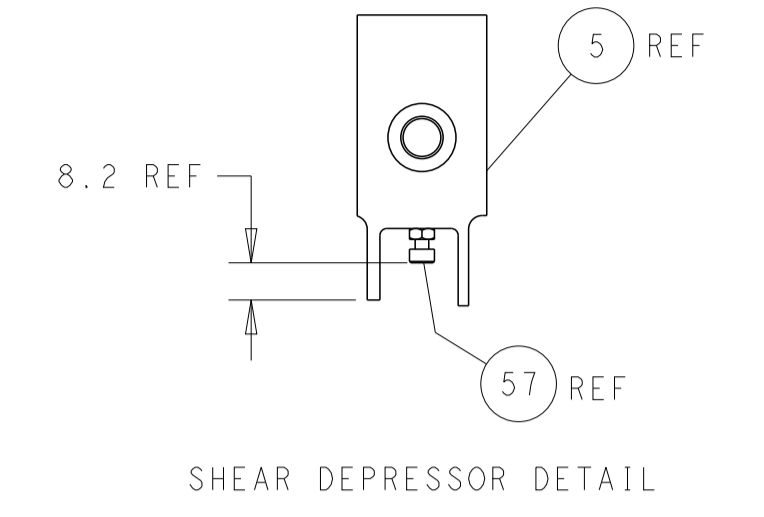
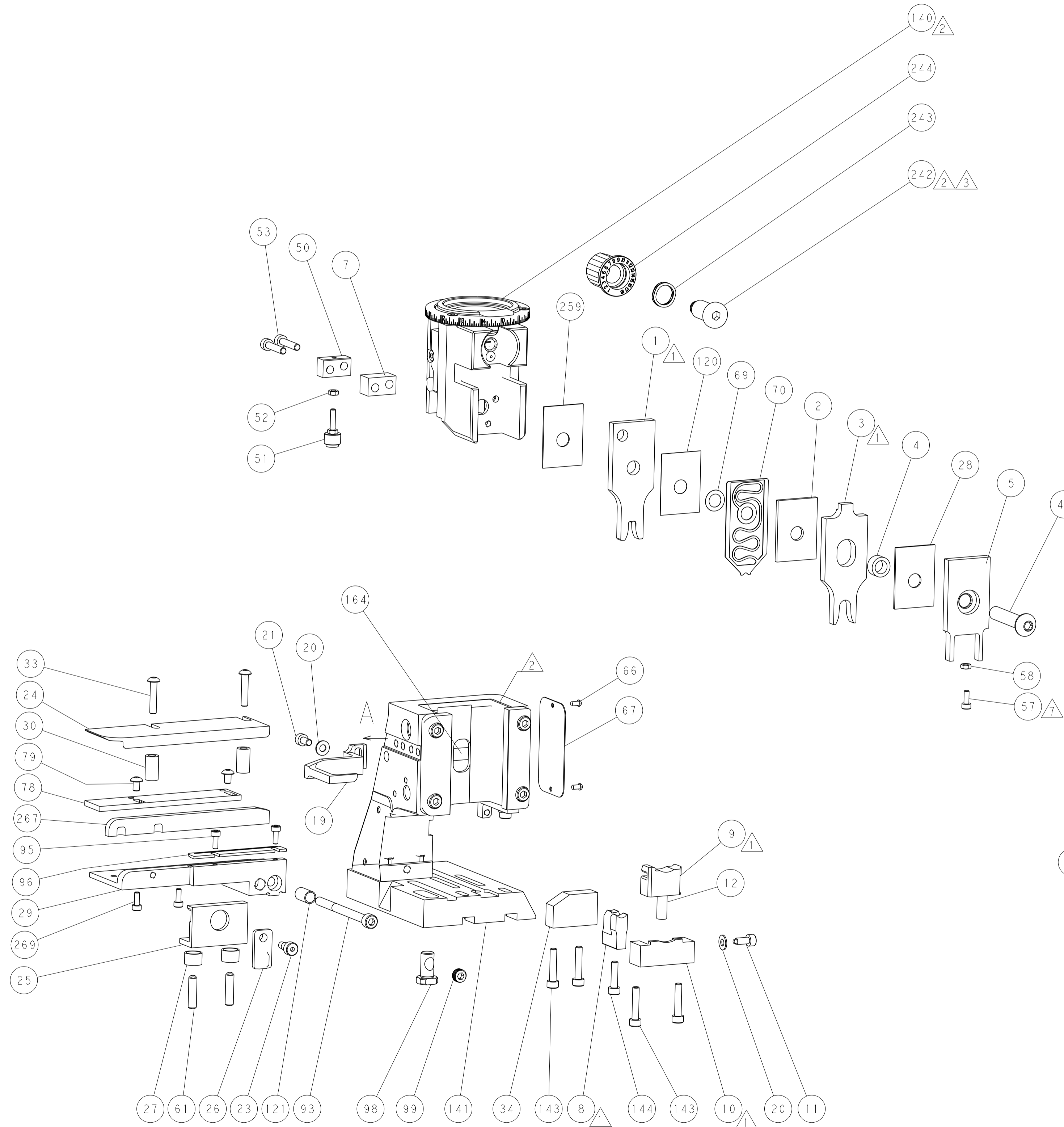


DETAIL A

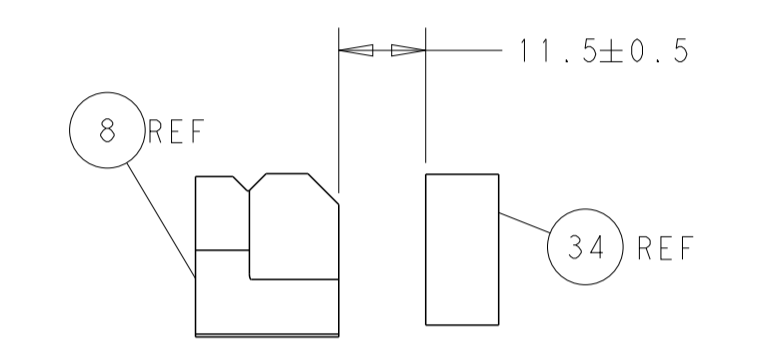
CAM POSITION



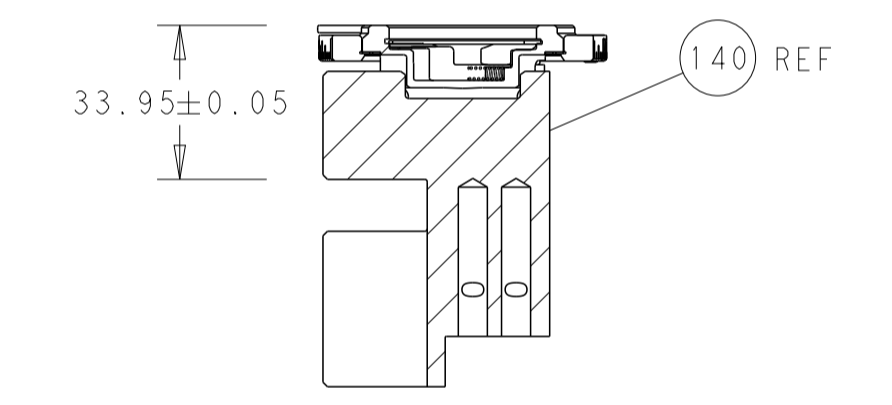
AIR FEED



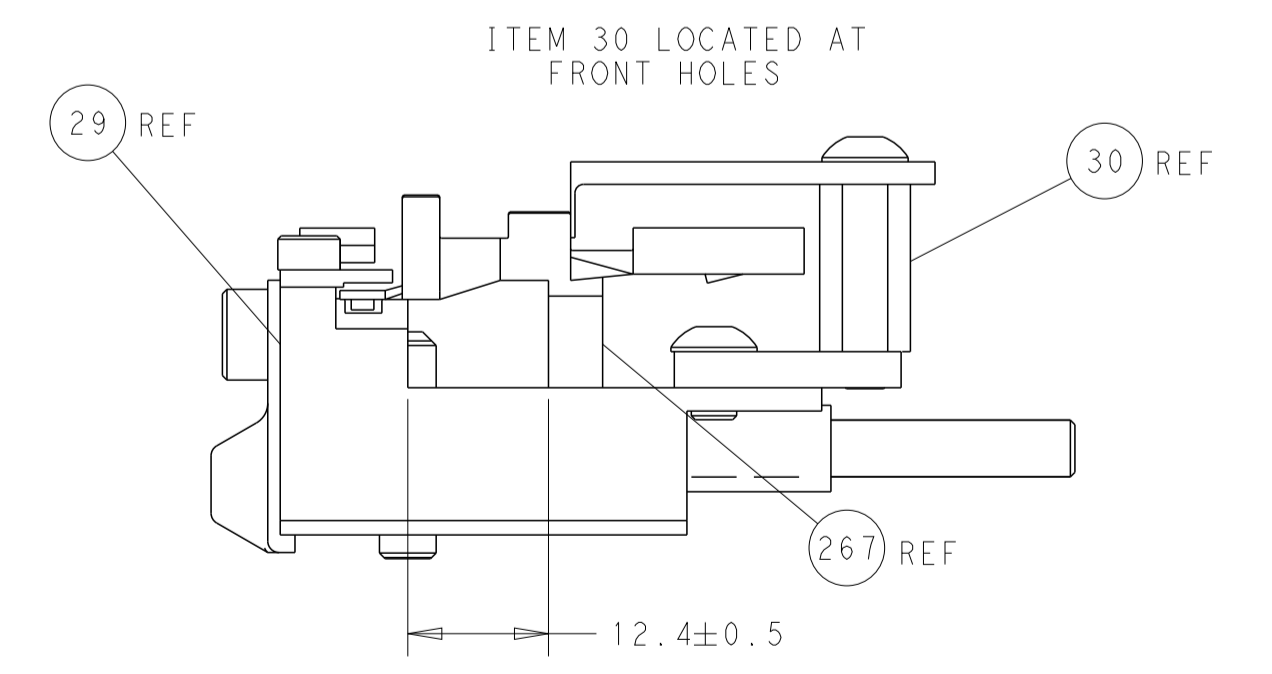
SHEAR DEPRESSOR DETAIL



TERMINAL SUPPORT LOCATION



HOLDDOWN SET-UP



FEED TRACK POSITION
GUIDE BY WIRE BARREL

PACIFIC VERSION
 Shown on sheets 3 of 4 & 4 of 4
 (Atlantic version shown on sheets 1 of 4 & 2 of 4)

<small>THIS DRAWING IS UNPUBLISHED. RELEASED FOR PUBLICATION 2017. IT IS THE PROPERTY OF TYCO ELECTRONICS CORPORATION. IT IS TO BE USED ONLY FOR THE PURPOSES AND IN THE MANNER SPECIFIED BY THE DRAWING. IT IS TO BE RETURNED TO TYCO ELECTRONICS CORPORATION UPON REQUEST.</small>		DWN: B. WEAVER 13OCT2017 CHK: T. ELBIN 13OCT2017 APVD: T. ELBIN 13OCT2017	TE Connectivity Harrisburg, PA 17105-3608
DIMENSIONS: mm TOLERANCES UNLESS OTHERWISE SPECIFIED: 0 PLC ± 1 PLC ± 2 PLC ± 3 PLC ± 4 PLC ± ANGLES ± MATERIAL: - FINISH: -		NAME: Ocean Side Feed Applicator SIZE: A1 CAGE CODE: 00779 DRAWING NO: C=2836950 WEIGHT: - SCALE: 1:2 SHEET: 4 OF 4 REV: B	RESTRICTED TO: -