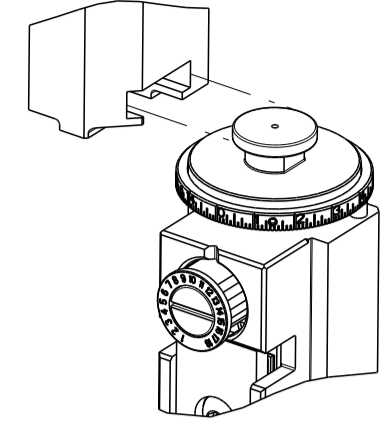


PART NUMBER	REVISION	DESCRIPTION	FEED TYPE
2836898-1	B	FINE CRIMP HEIGHT ADJUST	MECHANICAL
2836898-2	B	FINE CRIMP HEIGHT ADJUST	PNEUMATIC
7-2836898-1	B	MECHANICAL AND CRIMP TOOLING KIT	MECHANICAL
7-2836898-2	B	PNEUMATIC AND CRIMP TOOLING KIT	PNEUMATIC
7-2836898-7	A	CRIMP TOOLING KIT	-

ATLANTIC VERSION TERMINATOR INTERFACE ADAPTER



APPLICATOR DATA		
CRIMP	SIZE	TYPE
WIRE	3.38 mm [.133]	F
INSUL	3.80 mm [.150]	F

APPLICATOR INSTRUCTIONS
408-35042

TERMINAL DATA: FCI/DELPHI/PACKARD TERMINAL FCI CRIMP SPECIFICATION	
TERMINAL NAME: 2.8 APEX SNAP ON FEMALE	
WIRE STRIP LENGTH	INSULATION DIAMETER RANGE
4.68-5.44 mm [.184-.214 IN]	Ø2.63-3.50 mm [.103-.138 IN]
TERMINAL APPLICATION SPECIFICATION	C15004-CUST Rev N4

TERMINALS APPLIED			
TE TERMINAL	FCI/DELPHI/PACKARD TERMINAL	TE TERMINAL	FCI/DELPHI/PACKARD TERMINAL
1949054-1	JTP-1211-29	1949054-2	54001208
1949054-3	15422738	1949054-4	54001209
1949054-5	JTP-1211-29G	1949054-6	54001210
1949054-7	JTP-1211-66AU	1949054-8	54001228
1949054-9	JTP-1211-66AUG	1-1949054-0	15512746

WIRE SIZE	CRIMP HEIGHT mm [INCH]	CRIMP HEIGHT REFERENCE SETTING
12 AWG	1.95+/-0.05 [.077+/-0.002]	7.7

- 1 RECOMMENDED SPARE PARTS
- 2 REFER TO SUPPLIED INSTRUCTION SHEET FOR CLEANING, LUBRICATION AND STORAGE OF APPLICATOR.
- 3 APPLY PART NUMBER 2-23419-6 LOCTITE TO THREADS OF ITEM 242.
- 4 CRIMP HEIGHT REFERENCE SETTING WAS THE SETTING USED WHEN THE APPLICATOR WAS QUALIFIED AT THE FACTORY. ADJUSTMENT MAY BE NECESSARY WHEN RUNNING APPLICATOR IN THE FIELD.
- 5. UNLESS SPECIFIED OTHERWISE TORQUE VALUES SHALL BE USED PER DOCUMENT, 101-35000.

***WARNING**
ON INSTALLATION, SET WIRE DISC TO CRIMP HEIGHT REFERENCE SETTING FOR LARGEST WIRE SIZE. CRIMP HEIGHT REFERENCE SETTINGS GREATER THAN THE VALUE SHOWN MAY CAUSE DAMAGE TO THE CRIMP TOOLING. REFER TO THE INSTRUCTION SHEET FOR PROPER SETUP AND ADJUSTMENTS.

ATLANTIC VERSION
Shown on sheets 1 of 4 & 2 of 4
(Pacific version shown on sheets 3 of 4 & 4 of 4)

LOC	DIST	REVISIONS					
A	66	P	LTN	DESCRIPTION	DATE	OWN	APVD
		A		RELEASED	07SEP2017	TB	TE
		B		ECR-21-00489	14JAN2021	TB	RR

-	2	2	2	2	2168083-1	SCR, SKT HD CAP, RoHS, M3 X 8.0	269
-	1	1	1	1	1-1633782-2	FENCE	267
-	1	-	1	-	2119641-1	FEED CAM, AIR FEED	248
-	1	1	1	1	2119082-7	CAM, SNAIL, INSULATION ADJUSTMENT	244
-	1	1	1	1	2079764-1	WASHER, WAVE SPRING, CREST-TO-CREST	243
-	1	1	1	1	2119083-1	RETAINER, INSULATION DIAL	242
-	1	1	1	1	7-18023-7	SCR, SKT HD CAP M3 X 4.0	241
-	-	1	-	1	2119580-1	MECHANICAL FEED ASSEMBLY	239
-	1	-	1	-	2844940-1	AIR FEED MODULE	238
-	REF	REF	REF	REF	994970-2	COUNTER, MAGNETIC	164
-	1	1	1	1	2844908-1	SCREW, LOCKING	99
-	1	1	1	1	2844907-1	POST, LOCKING	98
-	1	1	1	1	455888-5	SPACER, CRIMPER	82
-	1	1	1	1	22278-8	SPRING, COMPRESSION	77
-	1	1	1	1	854769-4	HOLDER, INS	74
-	1	1	1	1	1803607-3	DOCUMENTATION PACKAGE	71
-	1	1	1	1	2119740-1	TAG, IDENTIFICATION	67
-	2	2	2	2	2168078-1	SCREW, DRIVE, RH, RoHS, 2 x .188	66
-	1	1	1	1	2168083-2	SCR, SKT HD CAP, RoHS, M4 X 8.0	60
-	1	1	1	1	5-18022-5	SCR, HEX HD CAP, M4 X 6.0	59
-	1	1	1	1	21028-2	PIN, SLOTTED SPRING .062 X .250	58
-	1	1	1	1	1338683-8	FEED PAWL	56
-	4	4	4	4	2168083-3	SCR, SKT HD CAP, RoHS, M4 X 12.0	54
-	2	2	2	2	1-2168083-0	SCR, SKT HD CAP, RoHS, M4 X 10	53
-	1	1	1	1	5018030-1	NUT, HEX, REG, RoHS, M3	52
-	1	1	1	1	811242-5	BUMPER, HOLD DOWN	51
-	1	1	1	1	690753-2	SPACER, TONKER	50
-	1	2	1	2	18023-9	SCR, SKT HD CAP M4 X 6.0	49
-	-	1	-	1	2119652-1	FEED CAM, PRE FEED	48
-	-	1	-	1	2119653-1	FEED CAM, POST FEED	47
-	1	1	1	1	1803583-9	APPLICATOR BASIC ASSEMBLY, SF	46
-	1	1	1	1	1803515-1	RAM ASSEMBLY, SF ATLANTIC	44
-	1	1	1	1	1803602-1	SCR, BHSC, RoHS (M8 X 25)	41
-	1	1	1	1	1752356-6	SUPPORT, TERMINAL	34
-	2	2	2	2	2079383-5	SCR, BHSC, RoHS (M4 X 20)	33
-	2	2	2	2	3-2844962-0	SPACER, CYLINDRICAL, STRIP GUIDE	30
-	1	1	1	1	2844992-2	ASSEMBLY, STRIP GUIDE	29
-	1	1	1	1	1-455888-7	SPACER, CRIMPER	28
-	1	1	1	1	1320928-2	STRIP GUIDE	24
-	1	1	1	1	2168083-2	SCR, SKT HD CAP, RoHS, M4 X 8.0	21
-	2	2	2	2	1-18028-2	WASHER, FLAT, REG M4	20
-	1	1	1	1	2119533-1	STRIPPER, SIDE FEED	19
-	1	1	1	1	2119806-1	INSERT, SHEAR	13
-	1	1	1	1	3-22280-3	SPRING, COMPRESSION	12
-	1	1	1	1	1-356885-4	STOP, SHEAR	11
-	1	1	1	1	2119805-1	SHEAR HOLDER, FRONT	10
-	1	1	1	1	1803095-6	FLOATING SHEAR, FRONT	9
-	1	2	2	1	1-1803514-4	ANVIL, COMBINATION	8
-	-	-	-	-	-	-	7
-	-	-	-	-	-	-	6
-	1	1	1	1	2119780-9	DEPRESSOR, SHEAR	5
-	1	1	1	1	1-238011-0	BLOCK, CRIMPER SPACER	4
-	1	2	2	1	3-2119582-9	CRIMPER, INSULATION F PREMIUM	3
-	1	1	1	1	1-455888-1	SPACER, CRIMPER	2
-	1	2	2	1	9-1633588-0	CRIMPER, WIRE	1

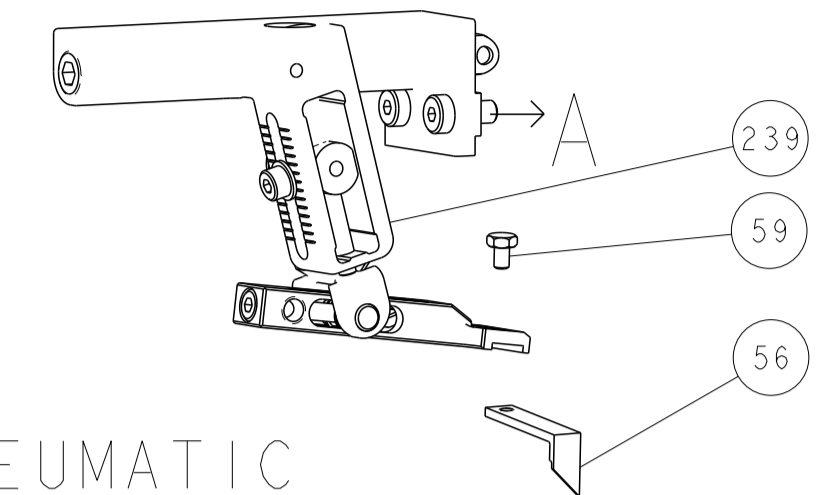
DIMENSIONS:		TOLERANCES UNLESS OTHERWISE SPECIFIED:		MATERIAL:		FINISH:	
mm	0 PLC ±	1 PLC ±	2 PLC ±	3 PLC ±	4 PLC ±	ANGLES ±	FINISH ±

OWN	CHK	APVD	DATE	NAME	SIZE	CAGE CODE	DRAWING NO	RESTRICTED TO
B. WEAVER	T. ELBIN	T. ELBIN	17AUG2017	Ocean Side Feed Applicator	A1	00779	2836898	-

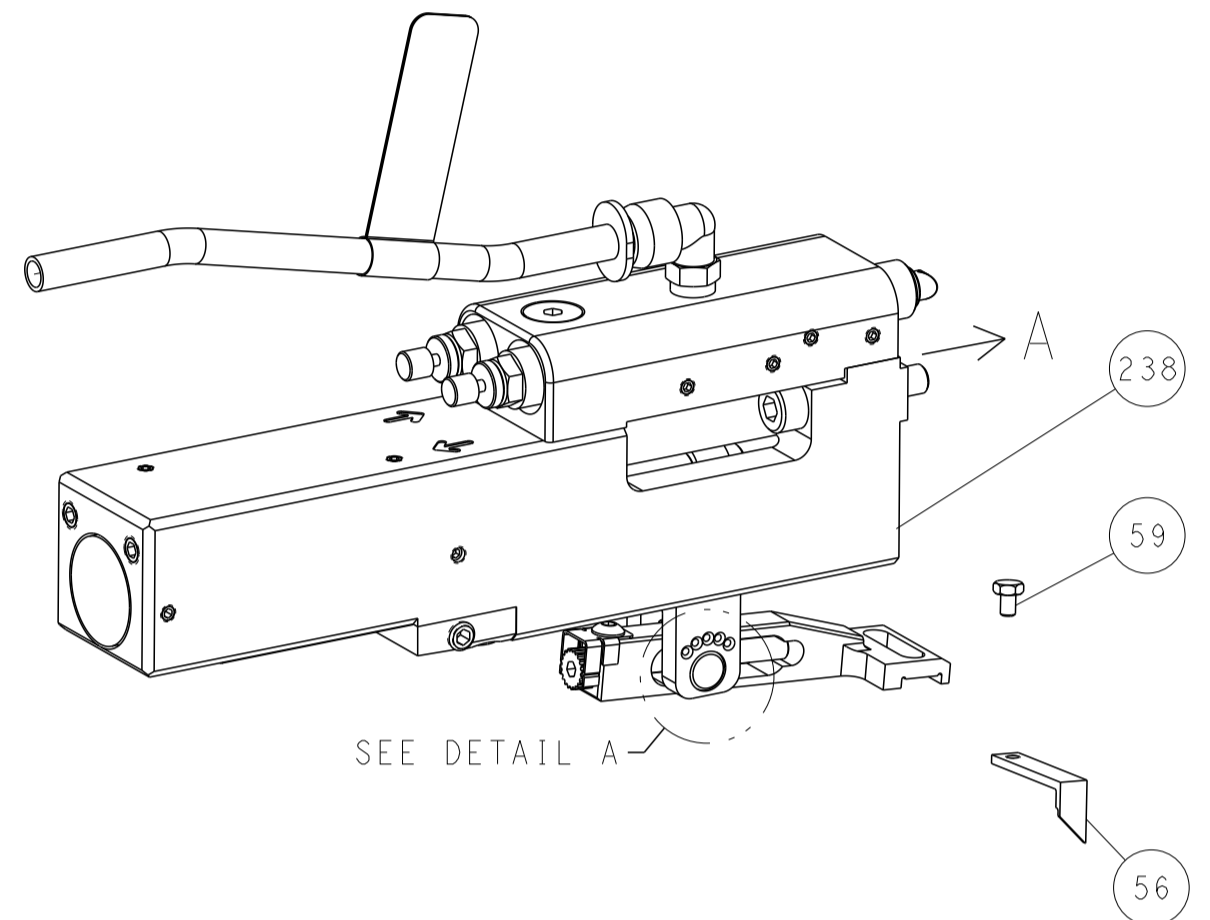
Customer Accessible Production Drawing SCALE 1:2 SHEET 1 OF 4 REV B

LOC	DIST	REVISIONS					
		P	LTN	DESCRIPTION	DATE	DMN	APVD
A	66	-	-	SEE SHEET 1	-	-	-

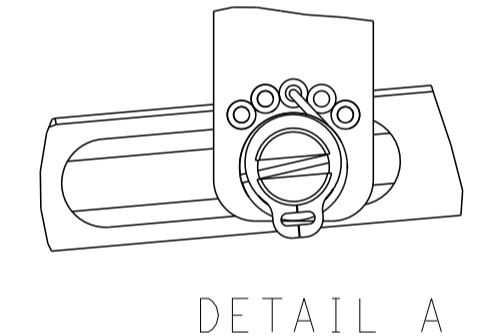
FEED TYPE MECHANICAL



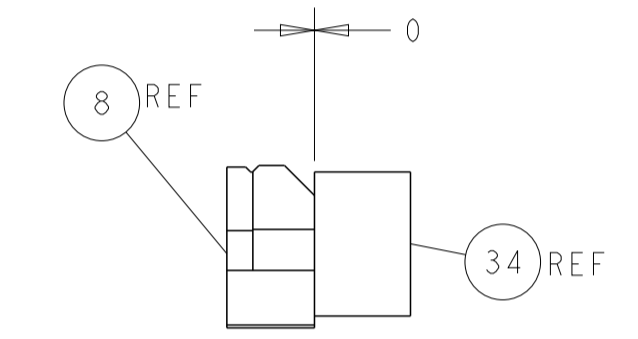
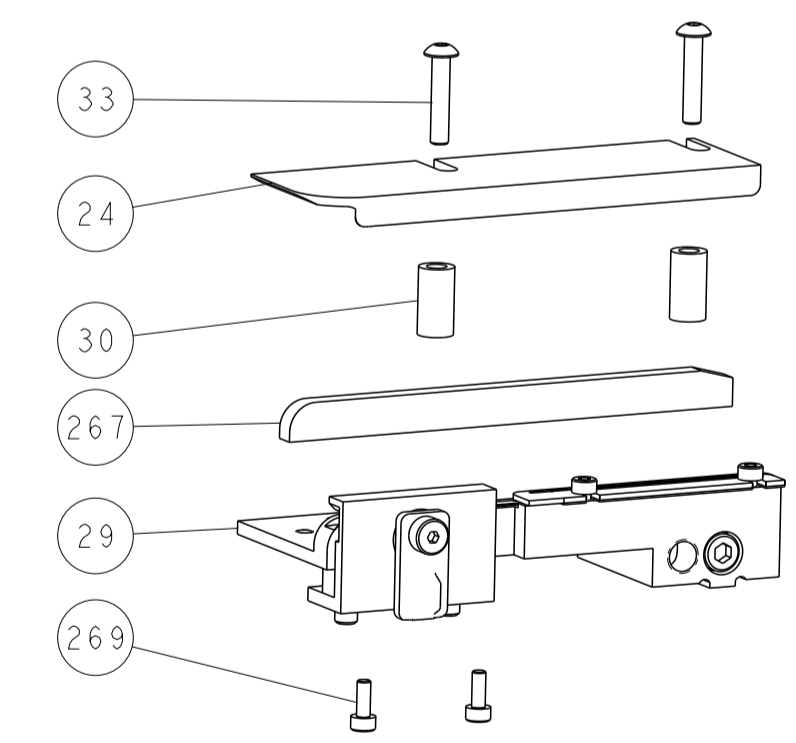
PNEUMATIC



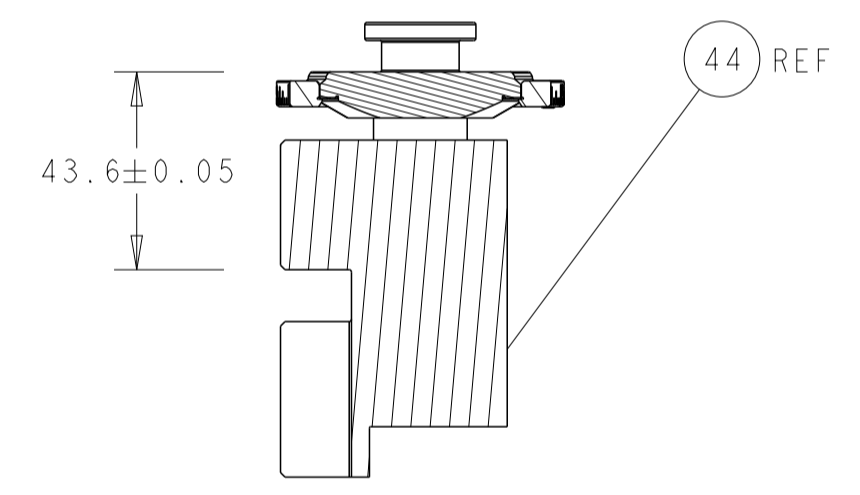
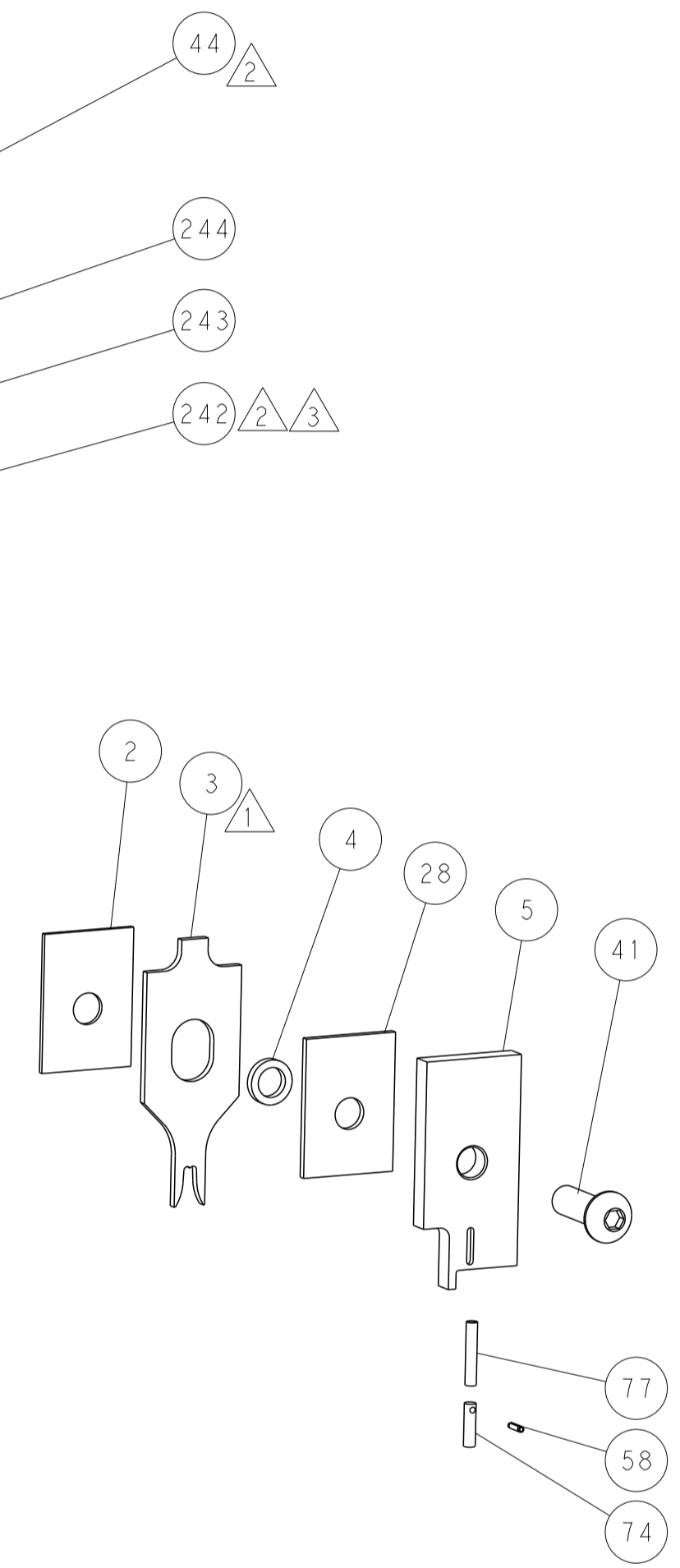
FEED SPRING SETTING POSITION (SHOWN FROM REAR SIDE)



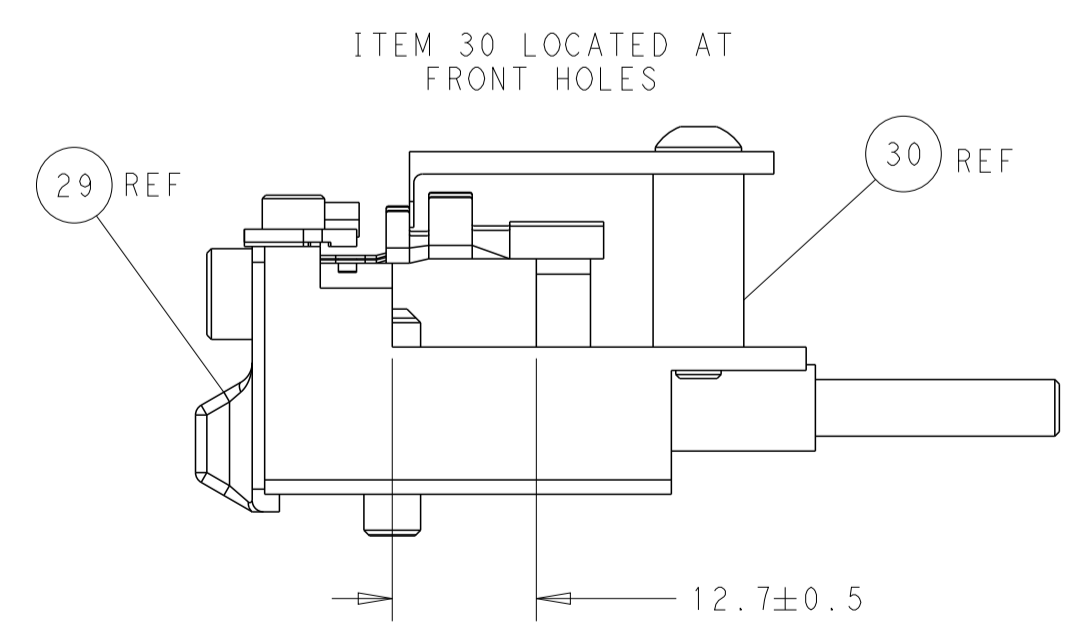
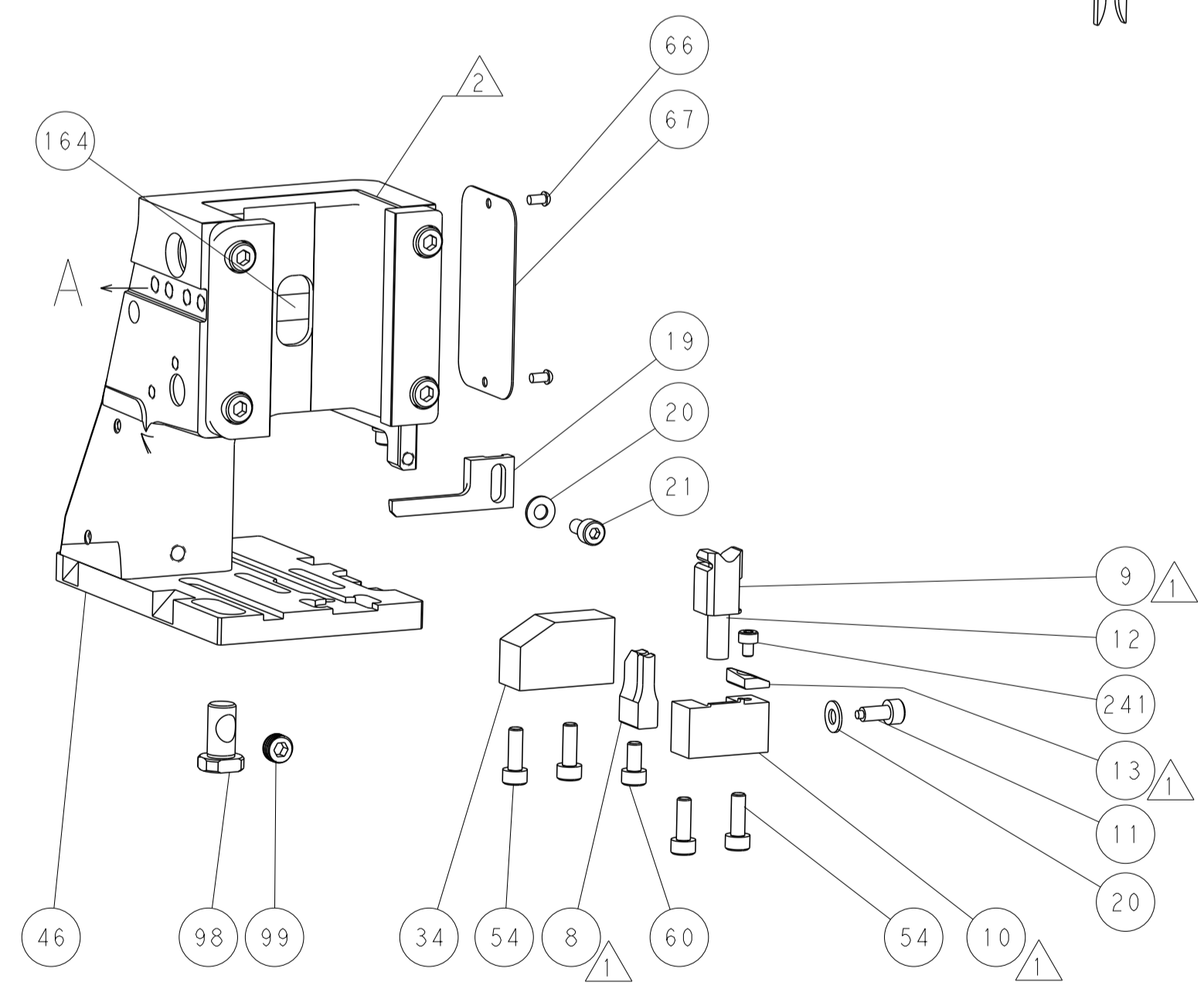
DETAIL A



TERMINAL SUPPORT LOCATION

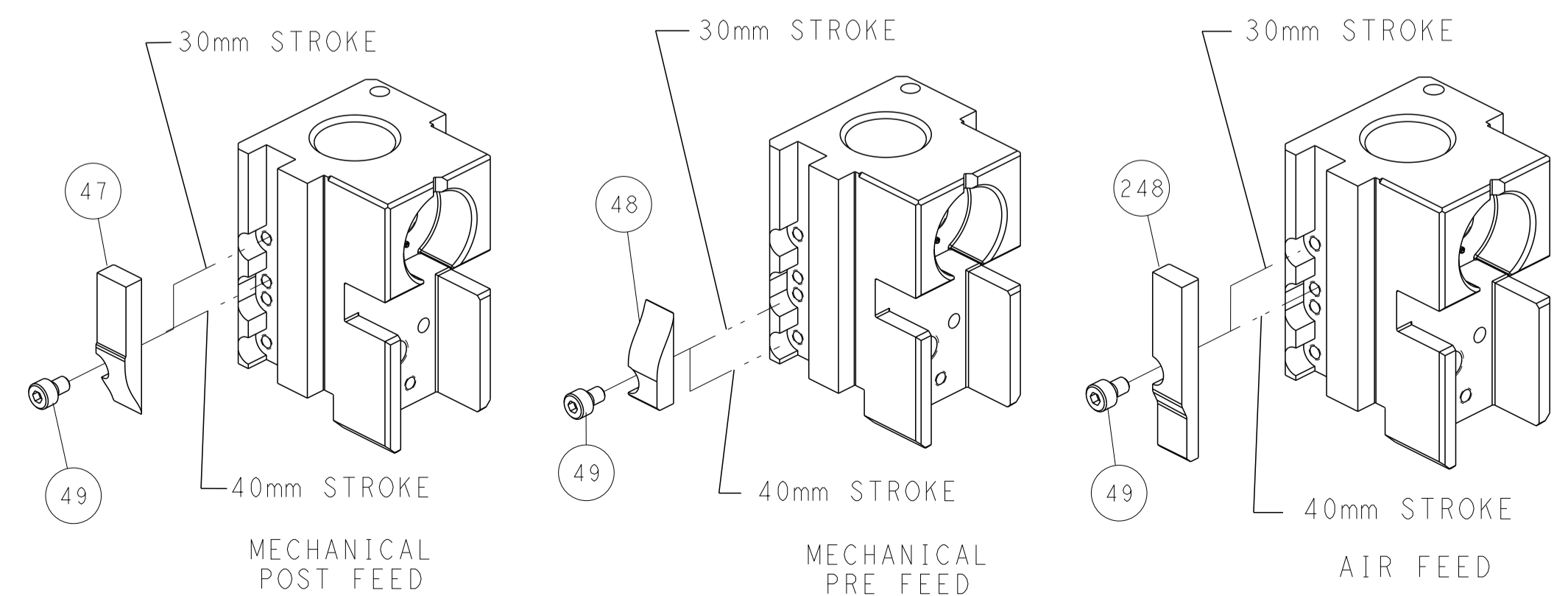


RAM SET-UP



FEED TRACK POSITION GUIDE BY INSULATION BARREL

CAM POSITIONS

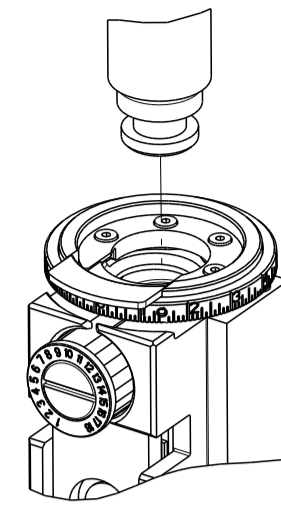


ATLANTIC VERSION
 Shown on sheets 1 of 4 & 2 of 4
 (Pacific version shown on sheets 3 of 4 & 4 of 4)

DIMENSIONS: mm 		TOLERANCES UNLESS OTHERWISE SPECIFIED: 0 PLC ± 1 PLC ± 2 PLC ± 3 PLC ± 4 PLC ± ANGLES ± FINISH		DWN B. WEAVER 17AUG2017 CHK T. ELBIN 17AUG2017 APVD T. ELBIN 17AUG2017 PRODUCT SPEC APPLICATION SPEC WEIGHT Customer Accessible Production Drawing		NAME Ocean Side Feed Applicator SIZE CAGE CODE DRAWING NO A1 00779 C=2836898 SCALE 1:2 SHEET 2 OF 4 REV B		TE Connectivity Harrisburg, PA 17105-3608	
-----------------------	--	---	--	--	--	---	--	--	--

PART NUMBER	REVISION	DESCRIPTION	FEED TYPE
2-2836898-1	B	FINE CRIMP HEIGHT ADJUST	MECHANICAL
2-2836898-2	B	FINE CRIMP HEIGHT ADJUST	PNEUMATIC
7-2836898-7	A	CRIMP TOOLING KIT	-

PACIFIC VERSION TERMINATOR
INTERFACE ADAPTER



APPLICATOR DATA		
CRIMP	SIZE	TYPE
WIRE	3.38 mm [.133]	F
INSUL	3.80 mm [.150]	F

APPLICATOR INSTRUCTIONS
408-35042

TERMINAL DATA: FCI/DELPHI/PACKARD TERMINAL FCI CRIMP SPECIFICATION			
TERMINAL NAME: 2.8 APEX SNAP ON FEMALE			
WIRE STRIP LENGTH 4.68-5.44 mm [.184-.214 IN]		INSULATION DIAMETER RANGE Ø2.63-3.50 mm [.103-.138 IN]	
TERMINAL APPLICATION SPECIFICATION C15004-CUST Rev N4			
TERMINALS APPLIED			
TE TERMINAL	FCI/DELPHI/PACKARD TERMINAL	TE TERMINAL	FCI/DELPHI/PACKARD TERMINAL
1949054-1	JTP-1211-29	1949054-2	54001208
1949054-3	15422738	1949054-4	54001209
1949054-5	JTP-1211-29G	1949054-6	54001210
1949054-7	JTP-1211-66AU	1949054-8	54001228
1949054-9	JTP-1211-66AUG	1-1949054-0	15512746

WIRE SIZE	CRIMP HEIGHT mm [INCH]	CRIMP HEIGHT REFERENCE SETTING
12 AWG	1.95+/-0.05 [.077+/-0.002]	7.7

- RECOMMENDED SPARE PARTS
 - REFER TO SUPPLIED INSTRUCTION SHEET FOR CLEANING, LUBRICATION AND STORAGE OF APPLICATOR.
 - APPLY PART NUMBER 2-23419-6 LOCTITE TO THREADS OF ITEM 242.
 - CRIMP HEIGHT REFERENCE SETTING WAS THE SETTING USED WHEN THE APPLICATOR WAS QUALIFIED AT THE FACTORY. ADJUSTMENT MAY BE NECESSARY WHEN RUNNING APPLICATOR IN THE FIELD.
5. UNLESS SPECIFIED OTHERWISE TORQUE VALUES SHALL BE USED PER DOCUMENT, 101-35000.

***WARNING**
ON INSTALLATION, SET WIRE DISC TO CRIMP HEIGHT REFERENCE SETTING FOR LARGEST WIRE SIZE. CRIMP HEIGHT REFERENCE SETTINGS GREATER THAN THE VALUE SHOWN MAY CAUSE DAMAGE TO THE CRIMP TOOLING. REFER TO THE INSTRUCTION SHEET FOR PROPER SETUP AND ADJUSTMENTS.

PACIFIC VERSION
Shown on sheets 3 of 4 & 4 of 4
(Atlantic version shown on sheets 1 of 4 & 2 of 4)

LOC	DIST	REV	DATE	BY	APPV
A	66				

REV	DATE	DESCRIPTION	DATE	BY	APPV
-	2	2168083-1			269
-	1	1-1633782-2			267
-	1	2119082-7			244
-	1	2079764-1			243
-	1	2119083-1			242
-	1	7-18023-7			241
-	-	2119580-1			239
-	1	2844940-1			238
-	REF	994970-2			164
-	1	2119641-2			151
-	1	2168083-8			144
-	4	2168083-9			143
-	-	2119653-2			142
-	1	1-1803583-0			141
-	1	1803516-1			140
-	1	2844908-1			99
-	1	2844907-1			98
-	1	455888-5			82
-	1	22278-8			77
-	1	854769-4			74
-	1	1803607-3			71
-	1	2119740-1			67
-	2	2168078-1			66
-	1	5-18022-5			59
-	1	21028-2			58
-	1	1338683-8			56
-	2	1-2168083-0			53
-	1	5018030-1			52
-	1	811242-5			51
-	1	690753-2			50
-	1	18023-9			49
-	-	2119652-1			48
-	1	1803602-1			41
-	1	1752356-6			34
-	2	2079383-5			33
-	2	3-2844962-0			30
-	1	2844992-2			29
-	1	1-455888-7			28
-	1	1320928-2			24
-	1	2168083-2			21
-	2	1-18028-2			20
-	1	2119533-1			19
-	1	2119806-1			13
-	1	3-22280-3			12
-	1	1-356885-4			11
-	1	2119805-1			10
-	1	1803095-6			9
-	1	1-1803514-4			8
-	-	-			7
-	-	-			6
-	1	2119780-9			5
-	1	1-238011-0			4
-	1	3-2119582-9			3
-	1	1-455888-1			2
-	1	9-1633588-0			1

DIMENSIONS:		TOLERANCES UNLESS OTHERWISE SPECIFIED:		DWG: B. WEAVER 17AUG2017	
mm	0 PLC ±	1 PLC ±	2 PLC ±	3 PLC ±	4 PLC ±
	ANGLES	FINISH		APVD: T. ELBIN 17AUG2017	NAME: T. ELBIN
MATERIAL:				PRODUCT SPEC:	APPLICATION SPEC:
				SIZE: A1	CAGE CODE: 00779
				SCALE: 1:2	DRAWING NO: 2836898
				RESTRICTED TO:	REV: B

