

ATLANTIC VERSION TERMINATOR INTERFACE ADAPTER	PART NUMBER	REVISION	DESCRIPTION	FEED TYPE	APPLICATOR STYLE CONVERSION CHART						
					CONVERT TO	PART NUMBERS REQUIRED					
	2836891-1	A	FINE CRIMP HEIGHT ADJUST	MECHANICAL	PNEUMATIC FEED	2119950-1	1338685-1	5-18022-5	2119641-1	2119799-1	2063440-1
	2836891-2	A	FINE CRIMP HEIGHT ADJUST	PNEUMATIC	SERVO LATCH PLATE	2119951-1	-	8-2836891-5	1901094-3	-	2168400-6 (QUANTITY 2)
					SMART APPLICATOR	2161326-1	-	8-2836891-4	-	-	
					MECHANICAL FEED	2119949-1	1338685-1	5-18022-5	2119653-1	-	-
	2836891-5	A	FINE CRIMP HEIGHT ADJUST	SERVO LATCH PLATE	SERVO LATCH PLATE	2119951-1	-	8-2836891-5	1901094-3	-	2168400-6 (QUANTITY 2)
					SMART APPLICATOR	2161326-1	-	8-2836891-4	-	-	
	2836891-6	A	NON-CRIMP HEIGHT ADJUST	SERVO LATCH PLATE	MECHANICAL FEED	2119949-1	1338685-1	5-18022-5	2119653-1	-	-
PNEUMATIC FEED					2119950-1	1338685-1	5-18022-5	2119641-1	2119799-1	2063440-1	
2836891-7	A	FINE CRIMP HEIGHT ADJUST	NONE	-	-	-	-	-	-	-	
7-2836891-7	A	CRIMP TOOLING KIT	-	-	-	-	-	-	-	-	

APPLICATOR DATA		
CRIMP	SIZE	TYPE
WIRE	1.07 mm [.042]	F
INSUL	1.65 mm [.065]	F

APPLICATOR INSTRUCTIONS
408-10389

TERMINAL DATA: ALEX TERMINAL		TE CRIMP SPECIFICATION	
TERMINAL NAME: 2.5MM PITCH CRIMP TERMINAL			
WIRE STRIP LENGTH		INSULATION DIAMETER RANGE	
2.67-3.43 mm [.105-.135 IN]		Ø0.70-1.20 mm [.028-.047 IN]	
TERMINAL APPLICATION SPECIFICATION	NONE		
TERMINALS APPLIED			
TE TERMINAL	ALEX TERMINAL	TE TERMINAL	ALEX TERMINAL
2318357-1	51008T1112001		

WIRE SIZE	CRIMP HEIGHT mm [INCH]	CRIMP HEIGHT REFERENCE SETTING
24 AWG	0.79+/-0.05 [.031+/-0.002]	3.8
26 AWG	0.73+/-0.05 [.029+/-0.002]	4.5
28 AWG	0.69+/-0.05 [.027+/-0.002]	4.9

- 1. RECOMMENDED SPARE PARTS
- 2. GREASE BEARING SURFACES LIGHTLY
- 3. LUBRICATE DAILY PER THE APPLICATOR INSTRUCTION SHEET SUPPLIED WITH THE APPLICATOR.
- 4. APPLICATOR SPECIFIC DATA TO BE ENTERED INTO BLANK MEMORY CHIP AT ASSEMBLY. SEE BELOW FOR PART NUMBER:
 MECHANICAL FEED WITH "SMART APPLICATOR" CONVERSION: 8-2836891-4
 PNEUMATIC FEED WITH "SMART APPLICATOR" CONVERSION: 8-2836891-4
 SERVO FEED WITH "FINE CRIMP HEIGHT ADJUST": 8-2836891-5
 SERVO FEED WITH "NON-CRIMP HEIGHT ADJUST": 8-2836891-6
- 5. ADJUSTMENT OF THE STRIPPER MAY BE REQUIRED WHEN MOVING THE APPLICATOR BETWEEN BENCH AND LEADMAKER APPLICATIONS.
- 6. APPLY PART NUMBER 1-23419-5 LOCTITE TO THREADS OF ITEM 62. APPLY PART NUMBER 2-23419-6 LOCTITE TO THREADS OF ITEM 242. FOR -6 ONLY APPLY PART NUMBER 1-23419-5 LOCTITE TO THREADS OF ITEM 37.
- 7. GREASE THREADS, GROOVE AND O-RING ON ITEMS 35 & 252.
- 8. MAGNET, ITEM 166 MUST BE ORIENTED CORRECTLY IN ORDER TO PROPERLY ACTUATE THE COUNTER.
- 9. CRIMP HEIGHT REFERENCE SETTING WAS THE SETTING USED WHEN THE APPLICATOR WAS QUALIFIED AT THE FACTORY. ADJUSTMENT MAY BE NECESSARY WHEN RUNNING APPLICATOR IN THE FIELD.
- 10. SPARE FEED CAM STORAGE LOCATION REFER TO INSTRUCTION SHEET FOR ADDITIONAL INFORMATION.
- 11. TO CONVERT THE APPLICATOR TO A NON-CARRIER CUTTING STYLE, REMOVE ITEM 13 AND ATTACH TO THE LOCATION ON THE BACK SIDE OF THE HOUSING. REFER TO INSTRUCTION SHEET FOR ADDITIONAL INFORMATION.
- 12. WHEN ASSEMBLING A NON CRIMP HEIGHT ADJUST APPLICATOR (-6) USE SHIMS FROM ITEM 260 TO ACHIEVE A NOMINAL SHIM HEIGHT OF 5.01.

***WARNING**
ON INSTALLATION, SET WIRE DISC, ITEM 40 TO LARGEST WIRE SIZE SETTING. USE OF SETTINGS BELOW MINIMUM REQUIRED CRIMP HEIGHT SETTING WILL CAUSE DAMAGE TO CRIMP TOOLING.

-77	-7	-6	-5	-2	-1	PART NO	DESCRIPTION	ITEM NO
-	-	1	-	-	-	2119957-2	APPLICATOR SHIM PACK	260

ATLANTIC VERSION
Shown on sheets 1 of 4 & 2 of 4
(Pacific version shown on sheets 3 of 4 & 4 of 4)

SET UP GAUGE	LOC	DIST	REVISIONS			
2119599-1	A	66	#	DATE	BY	CHK
			1	DEVELOPMENT	07SEP2017	MZ
			A	RELEASED	02OCT2017	JAH

#	QTY	DESCRIPTION	DATE	OWN	APVD
7	-	1 - 1 - 1 1 1	8-21084-0	O-RING, .676 ID, .070 DIA. MAT.	252
	-	- - - - 1 -	2119640-1	PUSH ROD, AIR FEED	250
	-	- - - - 1 -	1803259-1	BUSHING, FLANGED	249
	-	- - - - 1 -	2119641-1	FEED CAM, AIR FEED	248
	-	1 - 1 1 1 1	2119798-1	DETENT PIN	247
	-	1 - 1 - 1 1 1	1-22279-3	SPRING, COMPRESSION	246
	-	- - 1 - - -	2119758-1	RAM, AMP STYLE, SIDE FEED, NON-ADJ.	245
	-	1 1 1 1 1 1	2119082-5	CAM, SNAIL, INSULATION ADJUSTMENT	244
	-	1 1 1 1 1 1	2079764-1	WASHER, WAVE SPRING, CREST-TO-CREST	243
6	-	1 1 1 1 1 1	2119083-1	RETAINER, INSULATION DIAL	242
	-	1 1 1 1 1 1	7-18023-7	SCR, SKT HD CAP M3 X 4.0	241
	-	- - 2 2 - -	2168400-6	SHCS, LOW HEAD, RoHS, M5 X 16	240
	-	- - - - - 1	2119580-1	MECHANICAL FEED ASSEMBLY	239
	-	- - - - - 1	2063440-1	AIR FEED MODULE	238
	-	- - 1 1 - -	2119740-2	TAG, IDENTIFICATION	213
	-	- - 1 1 - -	1901094-3	SPACER, FEEDER	198
	-	- - - - - 2	21045-3	RING, RETAIN, EXTERN, 3/16 CRESCENT	172
-	1 1 1 1 1 1	994969-1	MAGNET, RARE EARTH HIGH ENERGY	166	
	-	REF REF REF REF REF	994970-2	COUNTER, MAGNETIC	164
	-	- - - - 1 -	240638-1	SPRING, FEED FINGER	163
	-	- - - - 1 -	3-23627-7	PIN, RETAIN, GRVD, 3/16 X .854	137
	-	- - - - 1 -	2119799-1	HOLDER, FEED FINGER, AF	136
	-	- - REF REF - -	SEE NOTE 4	MEMORY CHIP, PROGRAMMED	135
	-	- - 1 1 - -	1633743-1	SERVO FEED LATCH ASM	133
	-	- - REF REF - -	2119944-1	FEED FINGER ASSEMBLY, SF	117
	-	1 1 1 1 1 1	455888-5	SPACER, CRIMPER	82
	-	1 1 1 1 1 1	2119956-1	DOCUMENTATION PACKAGE	71
	-	1 - - - 1 1	2119740-1	TAG, IDENTIFICATION	67
	-	2 2 2 2 2 2	2168078-1	SCREW, DRIVE, RH, RoHS, 2 x .188	66
	-	1 - - 1 1 1 1	2119793-1	LIMITER, ADJUSTMENT BOLT	63
-	3 - 3 3 3 3	992763-5	SCR, SET, SOC, CONE PNT, M3 X 4.0	62	
	-	1 1 1 1 1 1	2079383-4	SCR, BHSC, RoHS (M4 X 8)	60
	-	- - - - 1 1	5-18022-5	SCR, HEX HD CAP, M4 X 6.0	59
	-	- - - - 1 1	1338685-1	PAWL, FEED	56
	-	4 4 4 4 4 4	2168400-1	SHCS, LOW HEAD, RoHS, M4 X 12	54
	-	2 2 2 2 2 2	1-2168083-0	SCR, SKT HD CAP, RoHS, M4 X 10	53
	-	1 1 1 1 1 1	5018030-1	NUT, HEX, REG, RoHS, M3	52
	-	1 1 1 1 1 1	811242-5	BUMPER, HOLD DOWN	51
	-	1 1 1 1 1 1	690753-2	SPACER, TONKER	50
	-	- - - - 1 2	18023-9	SCR, SKT HD CAP M4 X 6.0	49
	-	- - - - - 1	2119652-1	FEED CAM, PRE FEED	48
	-	- - - - - 1	2119653-1	FEED CAM, POST FEED	47
	-	1 1 1 1 1 1	2119656-9	APPLICATOR BASIC ASSEMBLY, SF	46
	-	1 - - 1 1 1 1	2119370-1	RAM, AMP STYLE, SIDE FEED	44
	-	1 1 1 1 1 1	2079383-7	SCR, BHSC, RoHS (M8 X 25)	41
	-	1 - - 1 1 1 1	2119645-1	DISC, NUMBERED FA WIRE ADJUSTMENT	40
	-	1 - - 1 1 1 1	2119957-1	APPLICATOR SHIM PACK	39
	-	1 1 1 1 1 1	1-2119644-4	RAM WASHER, PRECISION	38
	-	1 1 1 1 1 1	2119085-1	FA HEAD, ATLANTIC STYLE	37
-	1 - - 1 1 1 1	2119092-1	BOLT, ADJUSTMENT	35	
-	1 1 1 1 1 1	1752356-6	SUPPORT, TERMINAL	34	
	-	2 2 2 2 2 2	2079383-5	SCR, BHSC, RoHS (M4 X 20)	33
	-	1 1 1 1 1 1	2161328-1	HEX HEAD, FLANGED, M5 X 8mm LONG	32
	-	1 1 1 1 1 1	1320908-2	SPACER, STRIP GUIDE	30
	-	1 1 1 1 1 1	2119959-1	ASSEMBLY, STRIP GUIDE	29
	-	1 1 1 1 1 1	455888-3	SPACER, CRIMPER	28
	-	1 1 1 1 1 1	1320928-2	STRIP GUIDE	24
	-	1 1 1 1 1 1	2168083-2	SCR, SKT HD CAP, RoHS, M4 X 8.0	21
	-	2 2 2 2 2 2	1-18028-2	WASHER, FLAT, REG M4	20
	-	1 1 1 1 1 1	2119533-1	STRIPPER, SIDE FEED	19
-	1 1 1 1 1 1	2119806-1	INSERT, SHEAR	13	
	-	1 1 1 1 1 1	3-22280-3	SPRING, COMPRESSION	12
	-	1 1 1 1 1 1	1-356885-4	STOP, SHEAR	11
	-	1 1 1 1 1 1	2119805-1	SHEAR HOLDER, FRONT	10
	-	1 1 1 1 1 1	1803095-3	FLOATING SHEAR, FRONT	9
-	1 1 1 1 1 1	2-1633916-0	ANVIL, COMBINATION	8	
	-	- - - - - -	-	-	7
	-	- - - - - -	-	-	6
	-	1 1 1 1 1 1	2119757-4	DEPRESSOR, SHEAR	5
	-	1 1 1 1 1 1	2-238011-3	BLOCK, CRIMPER SPACER	4
-	1 1 1 1 1 1	3-1803223-8	CRIMPER, INSULATION F PREMIUM	3	
	-	1 1 1 1 1 1	455888-4	SPACER, CRIMPER	2
-	1 1 1 1 1 1	4-1633860-7	CRIMPER, WIRE	1	

DIMENSIONS:		TOLERANCES UNLESS OTHERWISE SPECIFIED:		APPROVED:		NAME:	
mm	0 PLC ±	1 PLC ±	2 PLC ±	3 PLC ±	4 PLC ±	ANGLES FINISH	★
MATERIAL:		FINISH:		WEIGHT:		SCALE: 1:2	
Customer Accessible Production Drawing				SHEET 1 of 4		REV A	

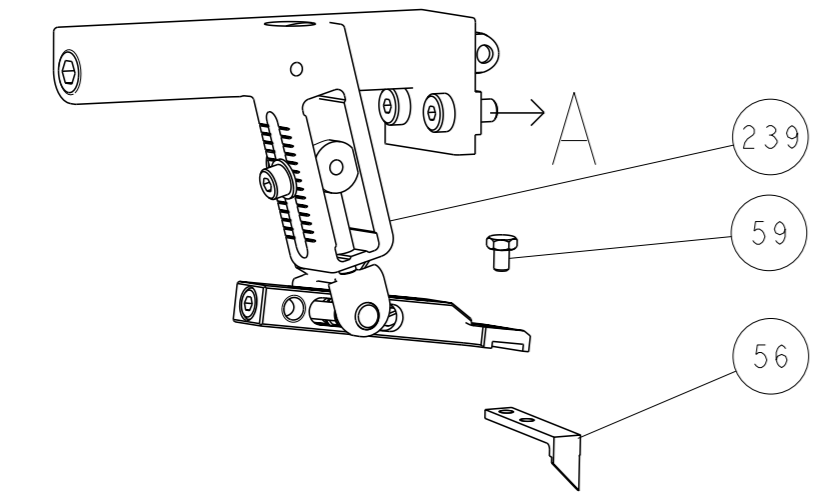
STE TE Connectivity
Harrisburg, PA 17105-3608

Ocean Side Feed
Applicator

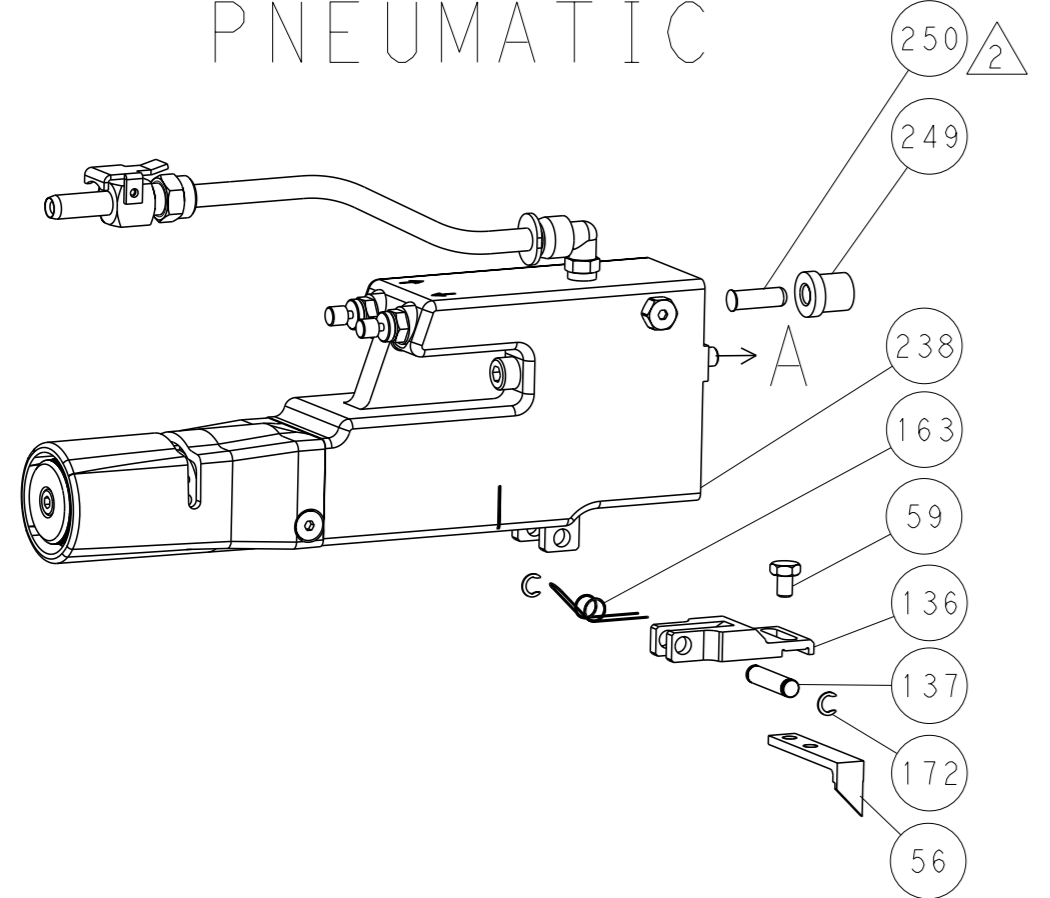
SIZE: A1 CAGE CODE: 00779 DRAWING NO: C=2836891

LOC		DIST		REVISIONS			
A	66	P	LYR	DESCRIPTION	DATE	OWN	APVD
		-		SEE SHEET 1			

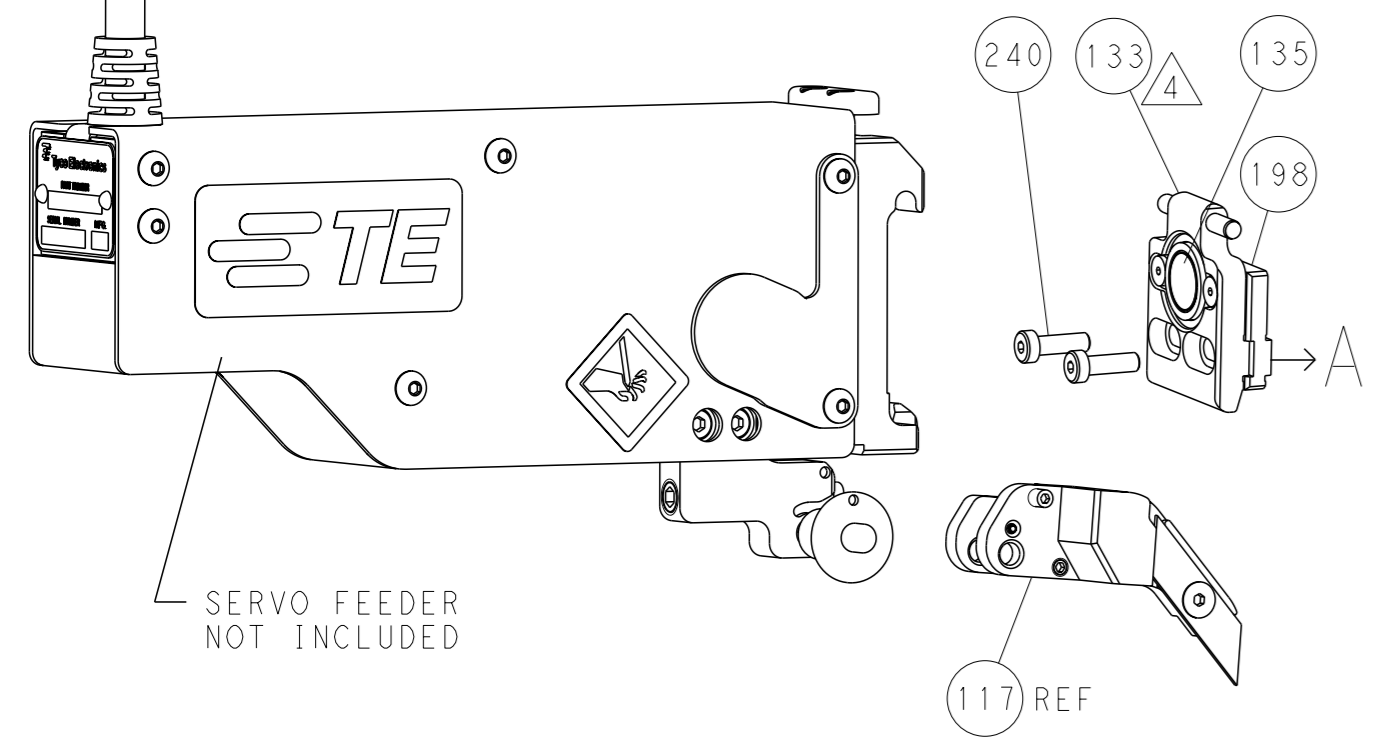
FEED TYPE MECHANICAL



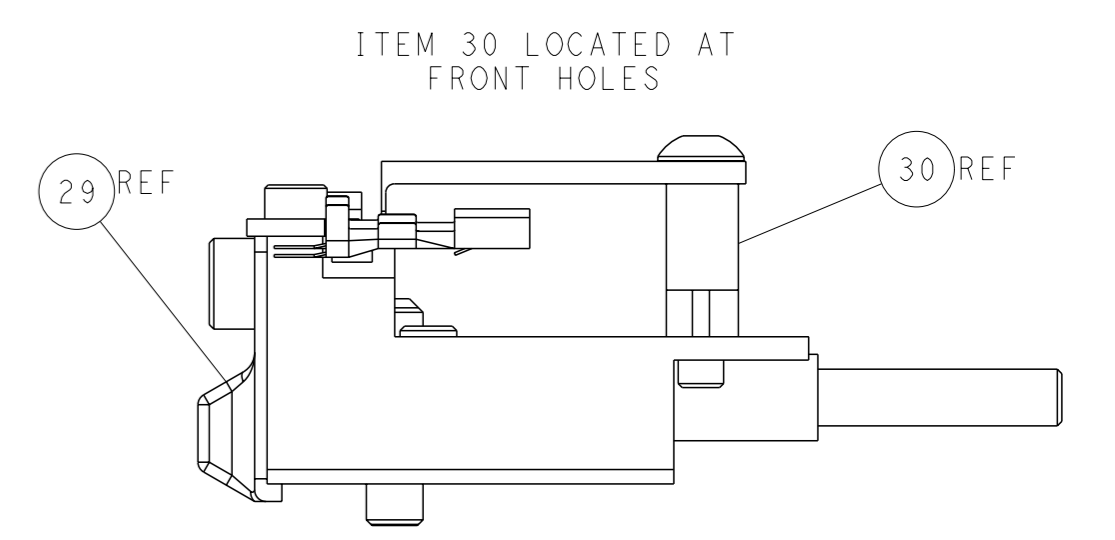
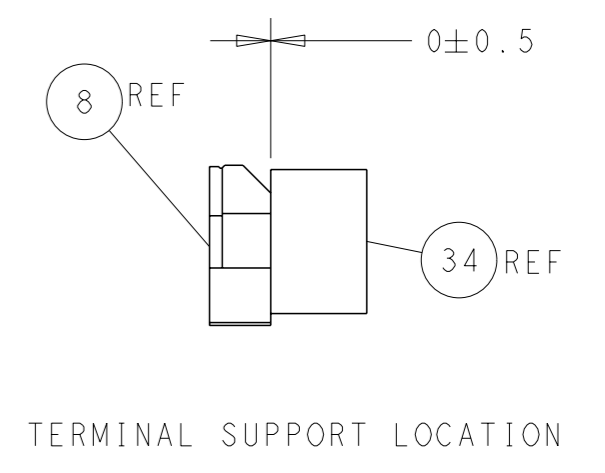
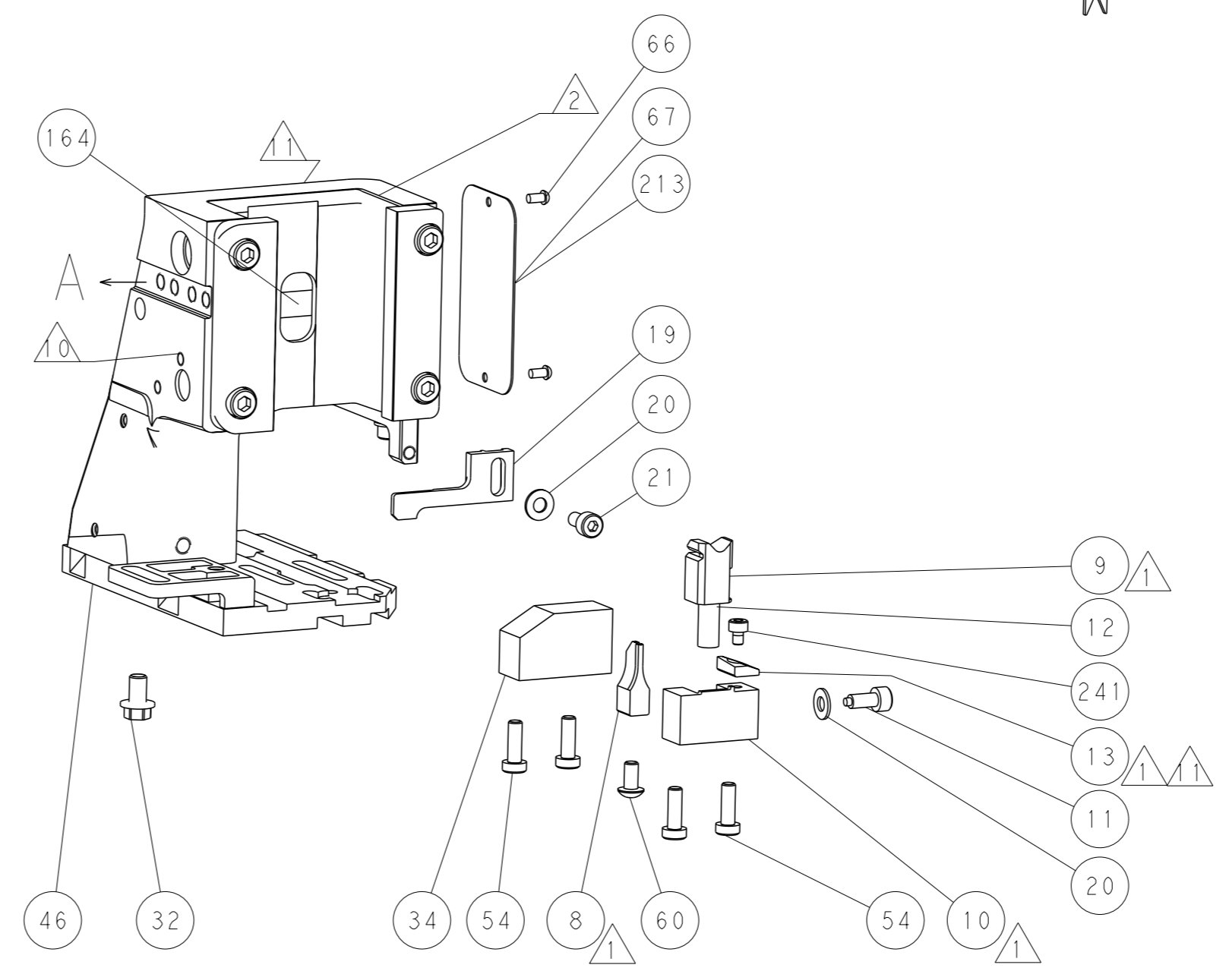
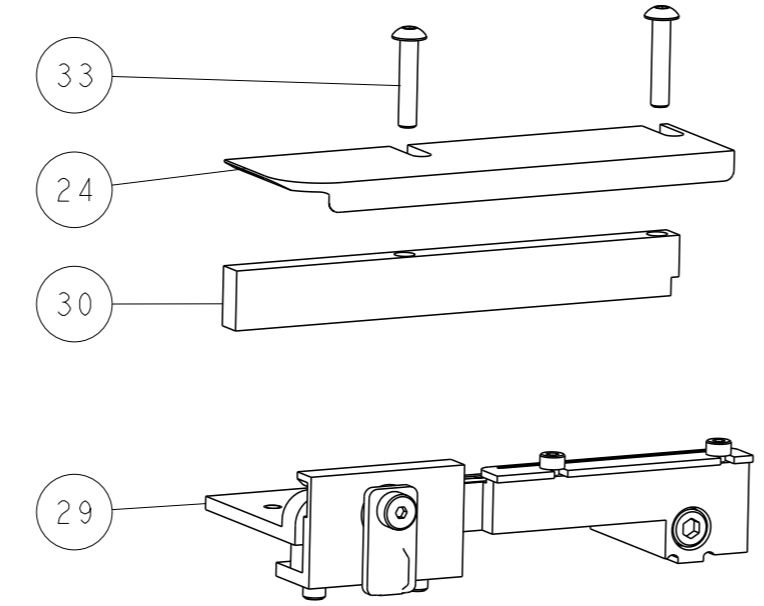
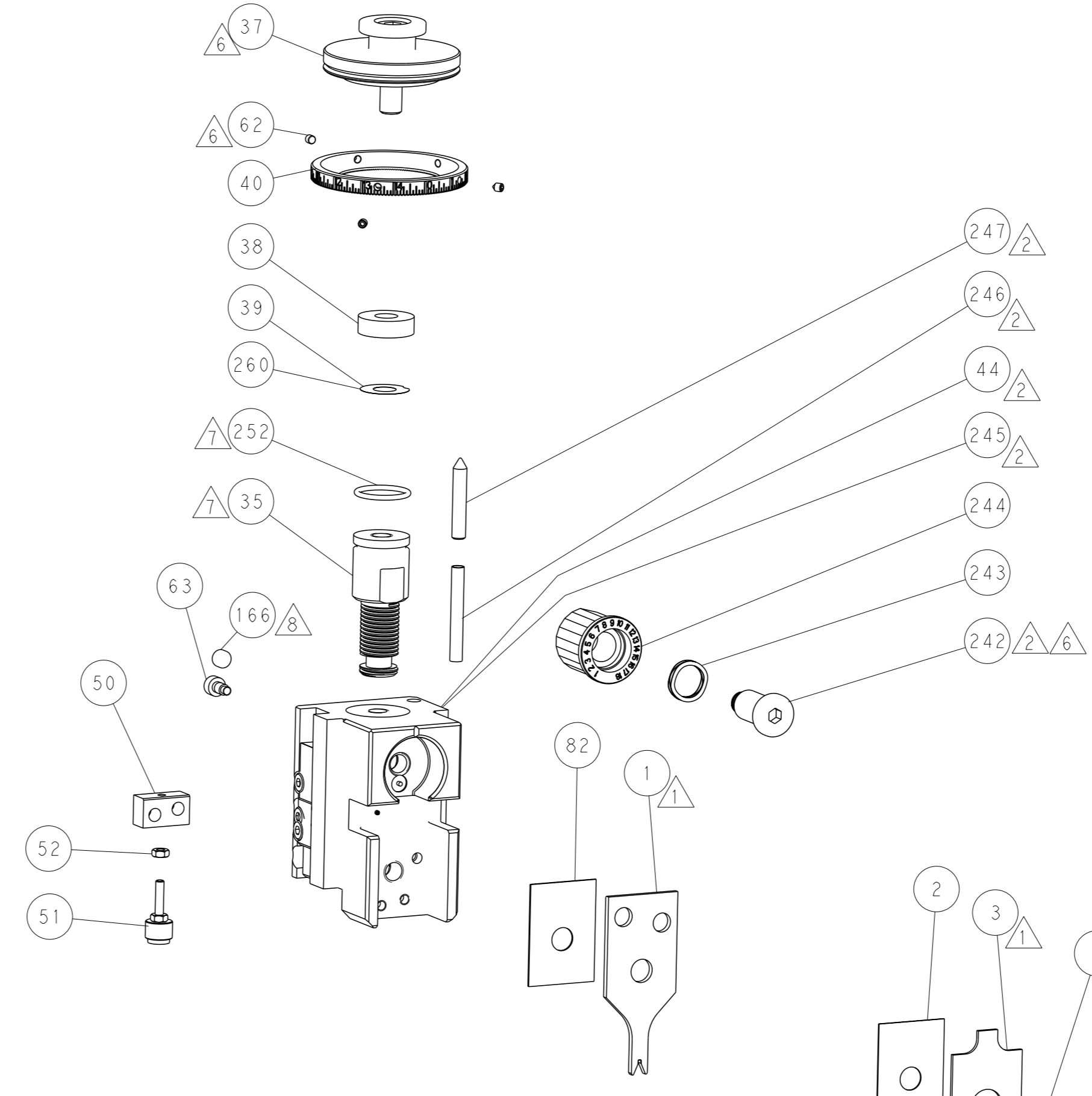
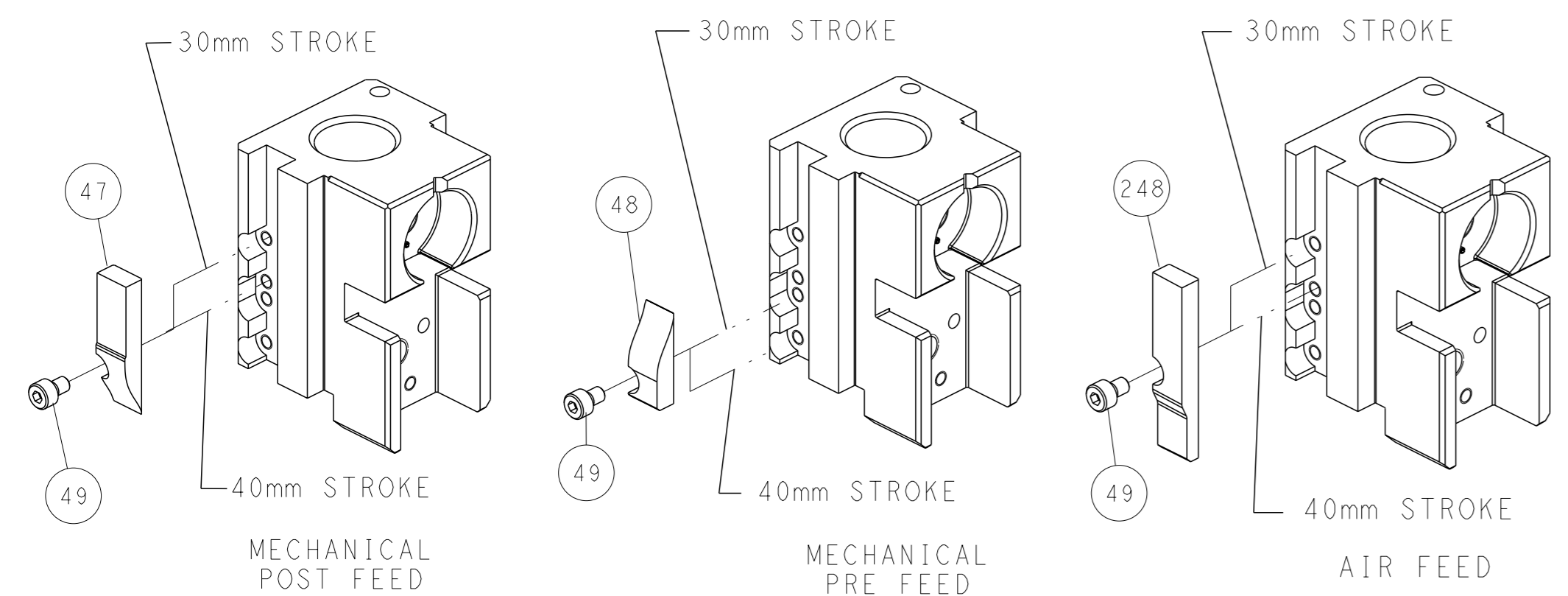
PNEUMATIC



SERVO LATCH PLATE



CAM POSITIONS



ATLANTIC VERSION
 Shown on sheets 1 of 4 & 2 of 4
 (Pacific version shown on sheets 3 of 4 & 4 of 4)

<small>THIS DRAWING IS UNPUBLISHED. RELEASED FOR PUBLICATION BY TYCO ELECTRONICS CORPORATION. ALL RIGHTS RESERVED.</small>		OWN: M. ZHAO 07SEP2017 CHK: K. ZHANG 07SEP2017 APVD: K. ZHANG 07SEP2017	NAME: Ocean Side Feed Applicator SIZE: A1 CAGE CODE: 00779 DRAWING NO: C=2836891	TE Connectivity Harrisburg, PA 17105-3608
DIMENSIONS: mm TOLERANCES UNLESS OTHERWISE SPECIFIED: 0 PLC ± 1 PLC ± 2 PLC ± 3 PLC ± 4 PLC ± ANGLES ±	MATERIAL:	WEIGHT:	RESTRICTED TO:	SCALE: 1:2 SHEET: 2 of 4 REV: A

PACIFIC VERSION TERMINATOR INTERFACE ADAPTER	PART NUMBER	REVISION	DESCRIPTION	FEED TYPE	APPLICATOR STYLE CONVERSION CHART						
					CONVERT TO	PART NUMBERS REQUIRED					
	2-2836891-1	A	FINE CRIMP HEIGHT ADJUST	MECHANICAL	PNEUMATIC FEED	2119950-1	1338685-1	5-18022-5	2119641-2	2119799-1	2063440-1
					SERVO LATCH PLATE	2119951-1	-	8-2836891-5	1901094-3	-	2168400-6 (QUANTITY 2)
					SMART APPLICATOR	2161326-1	-	8-2836891-4	-	-	-
	2-2836891-2	A	FINE CRIMP HEIGHT ADJUST	PNEUMATIC	MECHANICAL FEED	2119949-1	1338685-1	5-18022-5	2119653-2	-	-
					SERVO LATCH PLATE	2119951-1	-	8-2836891-5	1901094-3	-	2168400-6 (QUANTITY 2)
					SMART APPLICATOR	2161326-1	-	8-2836891-4	-	-	-
	2-2836891-5	A	FINE CRIMP HEIGHT ADJUST	SERVO LATCH PLATE	MECHANICAL FEED	2119949-1	1338685-1	5-18022-5	2119653-2	-	-
					PNEUMATIC FEED	2119950-1	1338685-1	5-18022-5	2119641-2	2119799-1	2063440-1
	2-2836891-7	A	FINE CRIMP HEIGHT ADJUST	NONE	-	-	-	-	-	-	-
	7-2836891-7	A	CRIMP TOOLING KIT	-	-	-	-	-	-	-	-

APPLICATOR DATA		
CRIMP	SIZE	TYPE
WIRE	1.07 mm (.042)	F
INSUL	1.65 mm (.065)	F
APPLICATOR INSTRUCTIONS 408-10389		

TERMINAL DATA: ALEX TERMINAL		TE CRIMP SPECIFICATION	
TERMINAL NAME: 2.5MM PITCH CRIMP TERMINAL			
WIRE STRIP LENGTH		INSULATION DIAMETER RANGE	
2.67-3.43 mm (.105-.135 IN)		Ø0.70-1.20 mm (.028-.047 IN)	
TERMINAL APPLICATION SPECIFICATION	NONE		
TERMINALS APPLIED			
TE TERMINAL	ALEX TERMINAL	TE TERMINAL	ALEX TERMINAL
2318357-1	51008T1112001		

WIRE SIZE	CRIMP HEIGHT mm [INCH]	CRIMP HEIGHT REFERENCE SETTING
24 AWG	0.79+/-0.05 [0.031+/-0.002]	3.8
26 AWG	0.73+/-0.05 [0.029+/-0.002]	4.5
28 AWG	0.69+/-0.05 [0.027+/-0.002]	4.9

- RECOMMENDED SPARE PARTS
- GREASE BEARING SURFACES LIGHTLY
- 3. LUBRICATE DAILY PER THE APPLICATOR INSTRUCTION SHEET SUPPLIED WITH THE APPLICATOR.
- APPLICATOR SPECIFIC DATA TO BE ENTERED INTO BLANK MEMORY CHIP AT ASSEMBLY. SEE BELOW FOR PART NUMBER:
 MECHANICAL FEED WITH "SMART APPLICATOR" CONVERSION: 8-2836891-4
 PNEUMATIC FEED WITH "SMART APPLICATOR" CONVERSION: 8-2836891-4
 SERVO FEED WITH "FINE CRIMP HEIGHT ADJUST": 8-2836891-5
- 5. ADJUSTMENT OF THE STRIPPER MAY BE REQUIRED WHEN MOVING THE APPLICATOR BETWEEN BENCH AND LEADMAKER APPLICATIONS.
- APPLY PART NUMBER 1-23419-5 LOCTITE TO THREADS OF ITEM 62. APPLY PART NUMBER 2-23419-6 LOCTITE TO THREADS OF ITEM 242.
- GREASE THREADS, GROOVE AND O-RING ON ITEMS 139 & 152.
- MAGNET MUST BE ORIENTED CORRECTLY IN ORDER TO PROPERLY ACTUATE THE COUNTER.
- CRIMP HEIGHT REFERENCE SETTING WAS THE SETTING USED WHEN THE APPLICATOR WAS QUALIFIED AT THE FACTORY. ADJUSTMENT MAY BE NECESSARY WHEN RUNNING APPLICATOR IN THE FIELD.
- SPARE FEED CAM STORAGE LOCATION REFER TO INSTRUCTION SHEET FOR ADDITIONAL INFORMATION.
- TO CONVERT THE APPLICATOR TO A NON-CARRIER CUTTING STYLE, REMOVE ITEM 13 AND ATTACH TO THE LOCATION ON BACK SIDE OF THE HOUSING. REFER TO INSTRUCTION SHEET FOR ADDITIONAL INFORMATION.

***WARNING**
 ON INSTALLATION, SET WIRE DISC, ITEM 40 TO LARGEST WIRE SIZE SETTING. USE OF SETTINGS BELOW MINIMUM REQUIRED CRIMP HEIGHT SETTING WILL CAUSE DAMAGE TO CRIMP TOOLING.

PACIFIC VERSION
 Shown on sheets 3 of 4 & 4 of 4
 (Atlantic version shown on sheets 1 of 4 & 2 of 4)

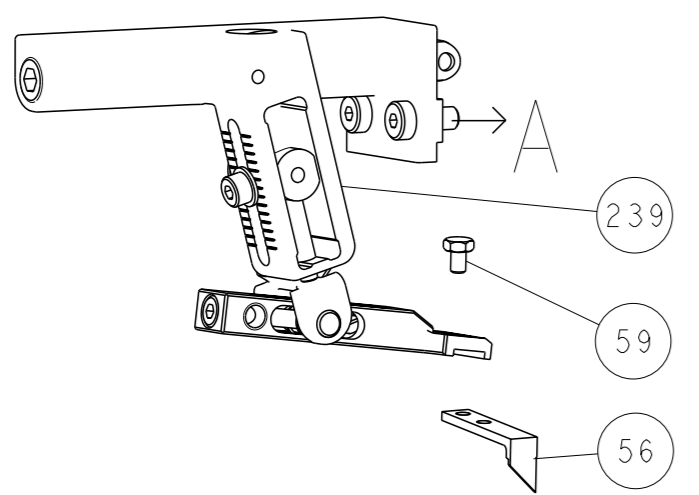
SET UP GAUGE	LOC	DIST	REVISIONS					
2119599-1	A	66	#	DATE	DESCRIPTION	DATE	OWN	APVD
			-		SEE SHEET 1			

-	1	1	1	1	2119782-1	FINE ADJUST HEAD ASM, PACIFIC STYLE	251
-	-	-	1	-	2119640-1	PUSH ROD, AIR FEED	250
-	-	-	1	-	1803259-1	BUSHING, FLANGED	249
-	1	1	1	1	1-22279-3	SPRING, COMPRESSION	246
-	1	1	1	1	2119082-5	CAM, SNAIL, INSULATION ADJUSTMENT	244
-	1	1	1	1	2079764-1	WASHER, WAVE SPRING, CREST-TO-CREST	243
	1	1	1	1	2119083-1	RETAINER, INSULATION DIAL	242
-	1	1	1	1	7-18023-7	SCR, SKT HD CAP M3 X 4.0	241
-	-	2	-	-	2168400-6	SHCS, LOW HEAD, RoHS, M5 X 16	240
-	-	-	-	1	2119580-1	MECHANICAL FEED ASSEMBLY	239
-	-	-	1	-	2063440-1	AIR FEED MODULE	238
-	-	1	-	-	2119740-2	TAG, IDENTIFICATION	213
-	-	1	-	-	1901094-3	SPACER, FEEDER	198
-	-	-	2	-	21045-3	RING, RETAIN, EXTERN, 3/16 CRESCENT	172
	1	1	1	1	994969-1	MAGNET, RARE EARTH HIGH ENERGY	166
-	REF	REF	REF	REF	994970-2	COUNTER, MAGNETIC	164
-	-	-	1	-	240638-1	SPRING, FEED FINGER	163
	1	1	1	1	8-21084-1	O-RING, .801 ID, .070 DIA. MAT.	152
-	-	-	1	-	2119641-2	FEED CAM, AIR FEED	151
-	1	1	1	1	2119798-2	DETENT PIN	145
-	1	1	1	1	2079383-8	SCR, BHSC, RoHS (M4 X 16)	144
-	4	4	4	4	2168400-5	SHCS, LOW HEAD, RoHS, M4 X 20	143
-	-	-	-	1	2119653-2	FEED CAM, POST FEED	142
-	1	1	1	1	1-2119656-0	APPLICATOR BASIC ASSEMBLY, SF	141
-	1	1	1	1	2119650-1	RAM, ASIAN STYLE, SIDE FEED	140
	1	1	1	1	2119092-2	BOLT, ADJUSTMENT	139
-	-	-	1	-	3-23627-7	PIN, RETAIN, GRVD, 3/16 X .854	137
-	-	-	1	-	2119799-1	HOLDER, FEED FINGER, AF	136
-	-	REF	-	-	SEE NOTE 4	MEMORY CHIP, PROGRAMMED	135
-	-	1	-	-	1633743-1	SERVO FEED LATCH ASM	133
-	-	REF	-	-	2119944-1	FEED FINGER ASSEMBLY, SF	117
-	1	1	1	1	455888-5	SPACER, CRIMPER	82
-	1	1	1	1	2119956-1	DOCUMENTATION PACKAGE	71
-	1	-	1	1	2119740-1	TAG, IDENTIFICATION	67
-	2	2	2	2	2168078-1	SCREW, DRIVE, RH, RoHS, 2 x .188	66
	1	1	1	1	2119793-1	LIMITER, ADJUSTMENT BOLT	63
-	3	3	3	3	992763-5	SCR, SET, SOC, CONE PNT, M3 X 4.0	62
-	-	-	1	1	5-18022-5	SCR, HEX HD CAP, M4 X 6.0	59
-	-	-	1	1	1338685-1	PAWL, FEED	56
-	2	2	2	2	1-2168083-0	SCR, SKT HD CAP, RoHS, M4 X 10	53
-	1	1	1	1	5018030-1	NUT, HEX, REG, RoHS, M3	52
-	1	1	1	1	811242-5	BUMPER, HOLD DOWN	51
-	1	1	1	1	690753-2	SPACER, TONKER	50
-	-	-	1	2	18023-9	SCR, SKT HD CAP M4 X 6.0	49
-	-	-	-	1	2119652-1	FEED CAM, PRE FEED	48
-	1	1	1	1	2079383-7	SCR, BHSC, RoHS (M8 X 25)	41
-	1	1	1	1	2119645-1	DISC, NUMBERED FA WIRE ADJUSTMENT	40
-	1	1	1	1	2119957-1	APPLICATOR SHIM PACK	39
-	1	1	1	1	1-2119644-4	RAM WASHER, PRECISION	38
-	1	1	1	1	1752356-6	SUPPORT, TERMINAL	34
-	2	2	2	2	2079383-5	SCR, BHSC, RoHS (M4 X 20)	33
-	1	1	1	1	2161328-1	HEX HEAD, FLANGED, M5 X 8mm LONG	32
-	1	1	1	1	1320908-2	SPACER, STRIP GUIDE	30
-	1	1	1	1	2119959-1	ASSEMBLY, STRIP GUIDE	29
-	1	1	1	1	455888-3	SPACER, CRIMPER	28
-	1	1	1	1	1320928-2	STRIP GUIDE	24
-	1	1	1	1	2168083-2	SCR, SKT HD CAP, RoHS, M4 X 8.0	21
-	2	2	2	2	1-18028-2	WASHER, FLAT, REG M4	20
-	1	1	1	1	2119533-1	STRIPPER, SIDE FEED	19
	1	1	1	1	2119806-1	INSERT, SHEAR	13
-	1	1	1	1	3-22280-3	SPRING, COMPRESSION	12
-	1	1	1	1	1-356885-4	STOP, SHEAR	11
	1	1	1	1	2119805-1	SHEAR HOLDER, FRONT	10
	1	1	1	1	1803095-3	FLOATING SHEAR, FRONT	9
	1	1	1	1	2-1633916-0	ANVIL, COMBINATION	8
-	-	-	-	-	-	-	7
-	-	-	-	-	-	-	6
-	1	1	1	1	2119757-4	DEPRESSOR, SHEAR	5
-	1	1	1	1	2-238011-3	BLOCK, CRIMPER SPACER	4
	1	1	1	1	3-1803223-8	CRIMPER, INSULATION F PREMIUM	3
-	1	1	1	1	455888-4	SPACER, CRIMPER	2
	1	1	1	1	4-1633860-7	CRIMPER, WIRE	1

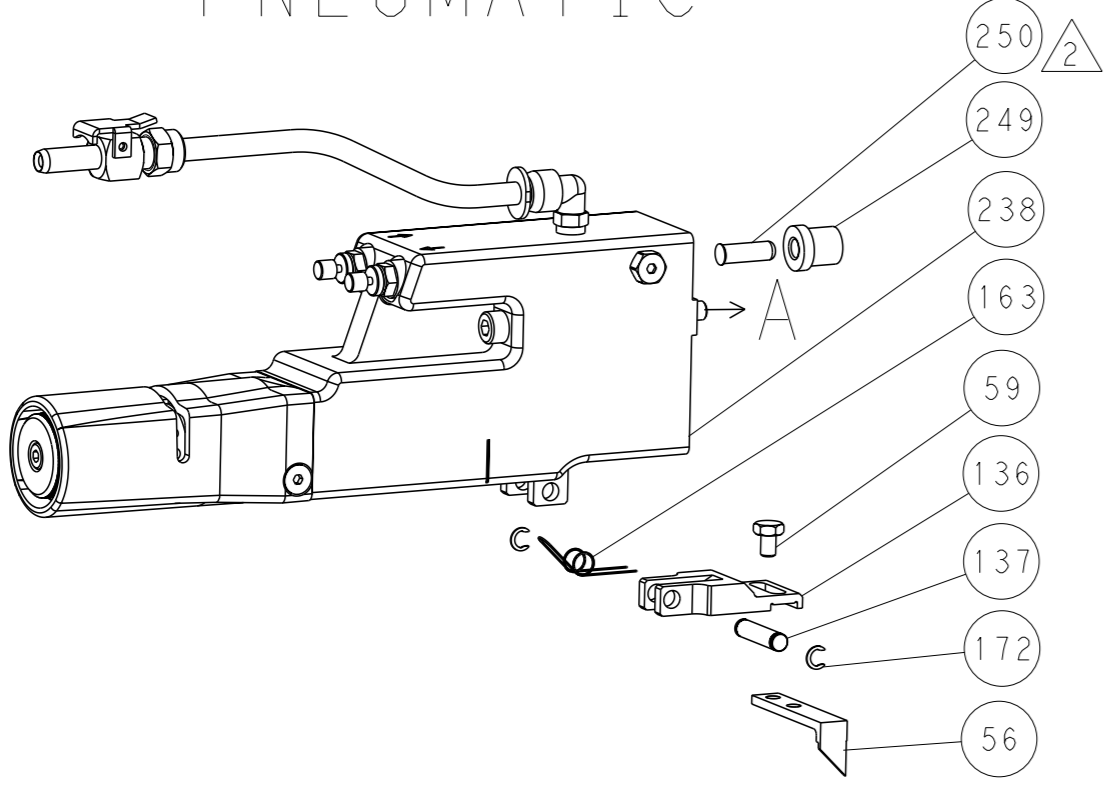
DIMENSIONS:		TOLERANCES UNLESS OTHERWISE SPECIFIED:		OWN	CHK	APVD	DATE	NAME		SIZE	CAGE CODE	DRAWING NO	RESTRICTED TO		
mm	0 PLC	±		M. ZHAO	K. ZHANG	K. ZHANG	07SEP2017	STE TE Connectivity		A1	00779	©=2836891			
	1 PLC	±						Ocean Side Feed							
	2 PLC	±						Applicator							
	3 PLC	±													
	4 PLC	±													
	5 PLC	±													
	ANGLES	±	*												
MATERIAL															
Customer Accessible Production Drawing										SCALE	1:2	SHEET	3 of 4	REV	A

REVISONS		DATE	OWN	APVD
LOC	DIST			
A	66			
P	LYR	DESCRIPTION		
-	-	SEE SHEET 1	-	-

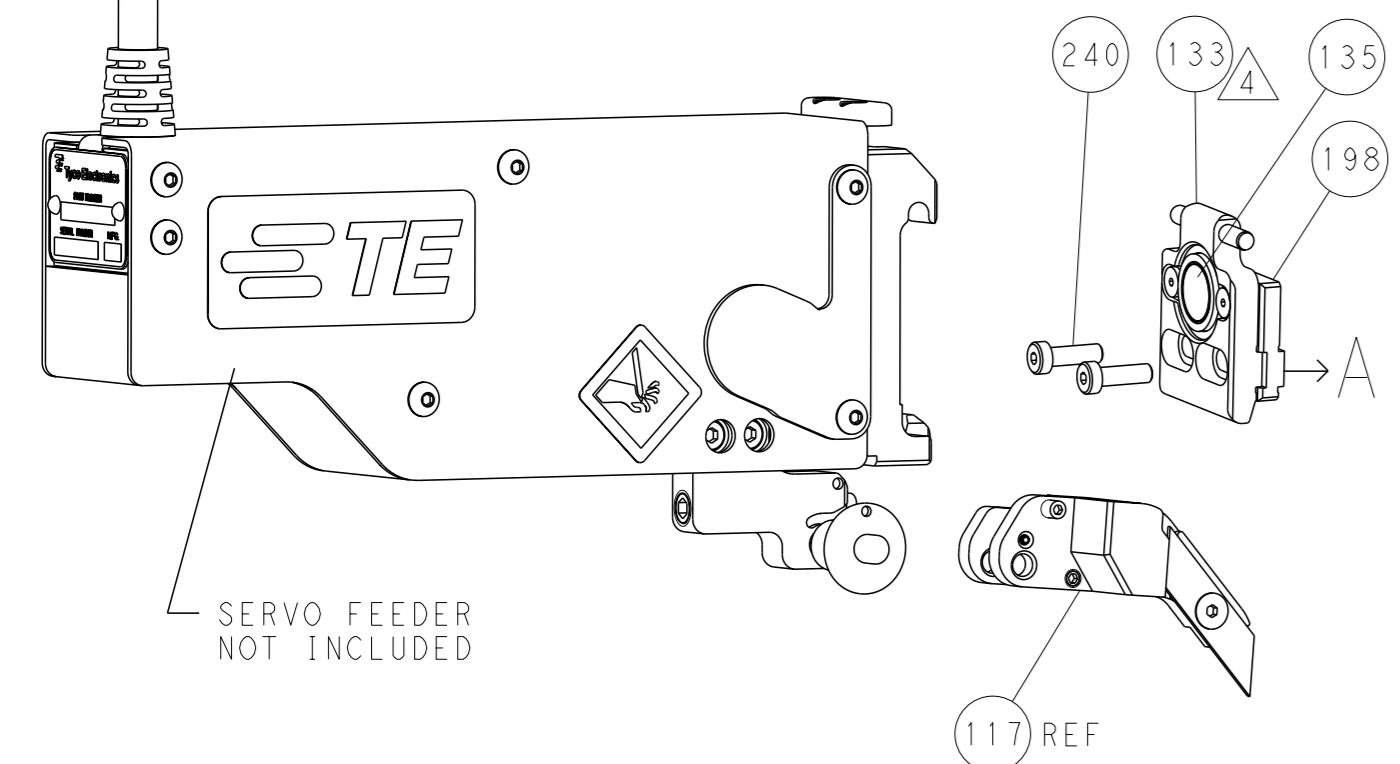
FEED TYPE MECHANICAL



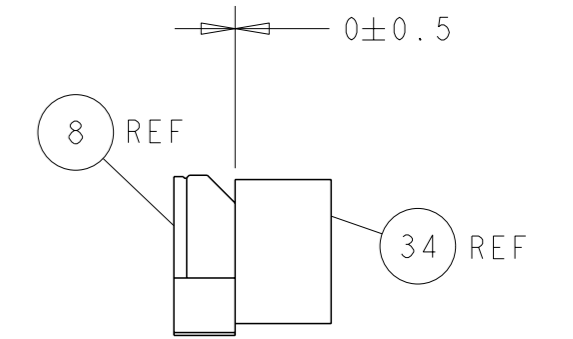
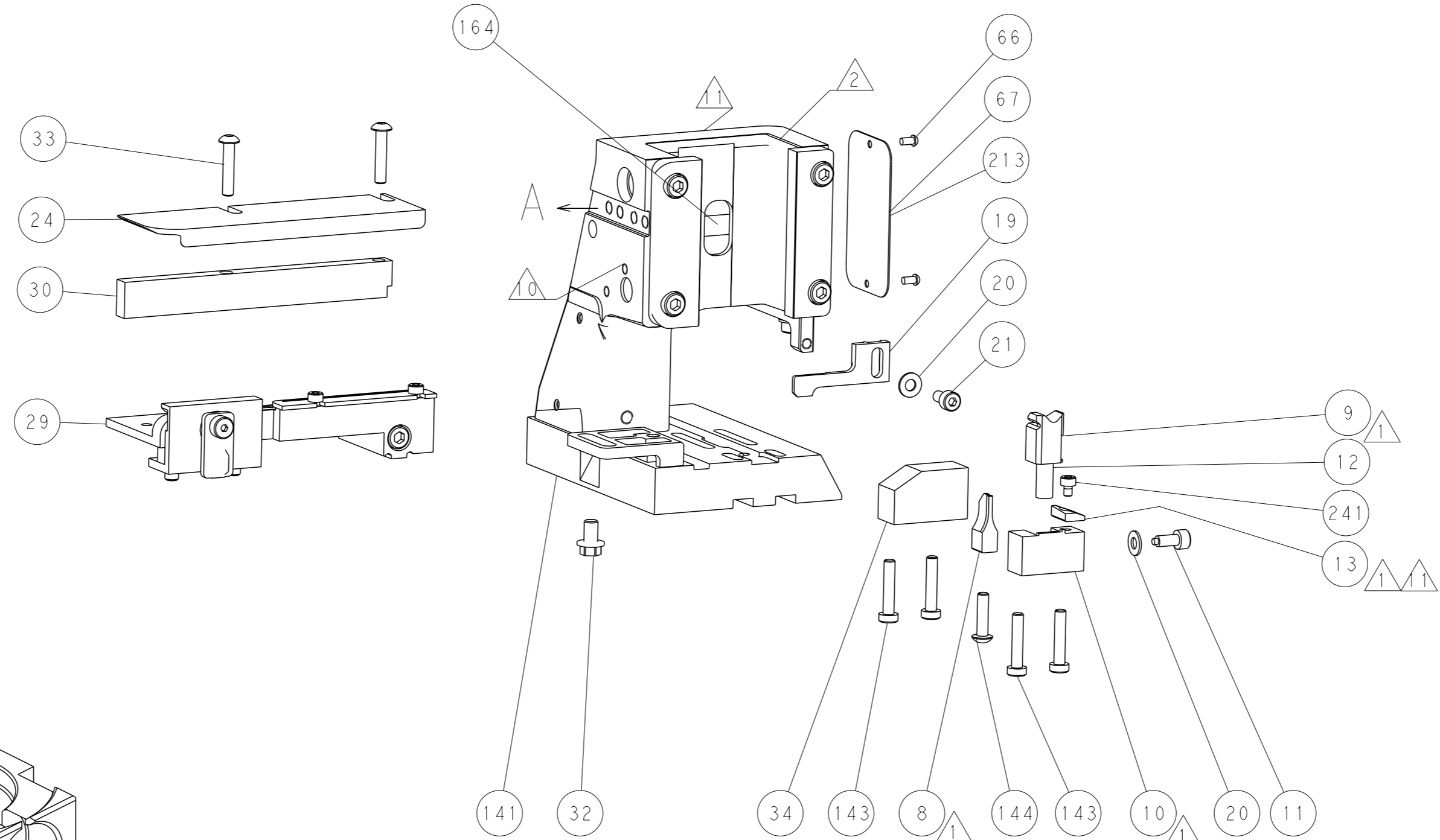
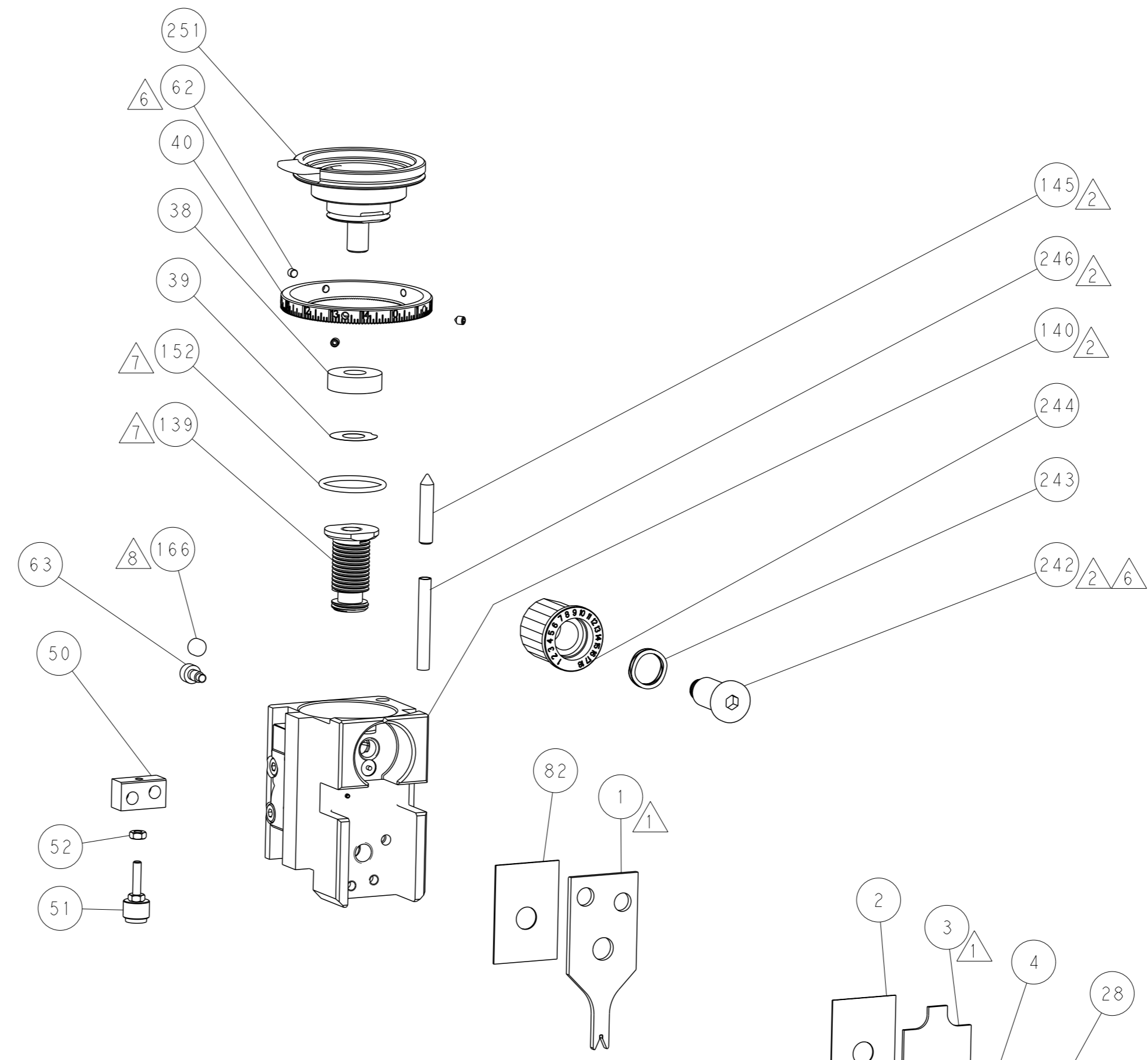
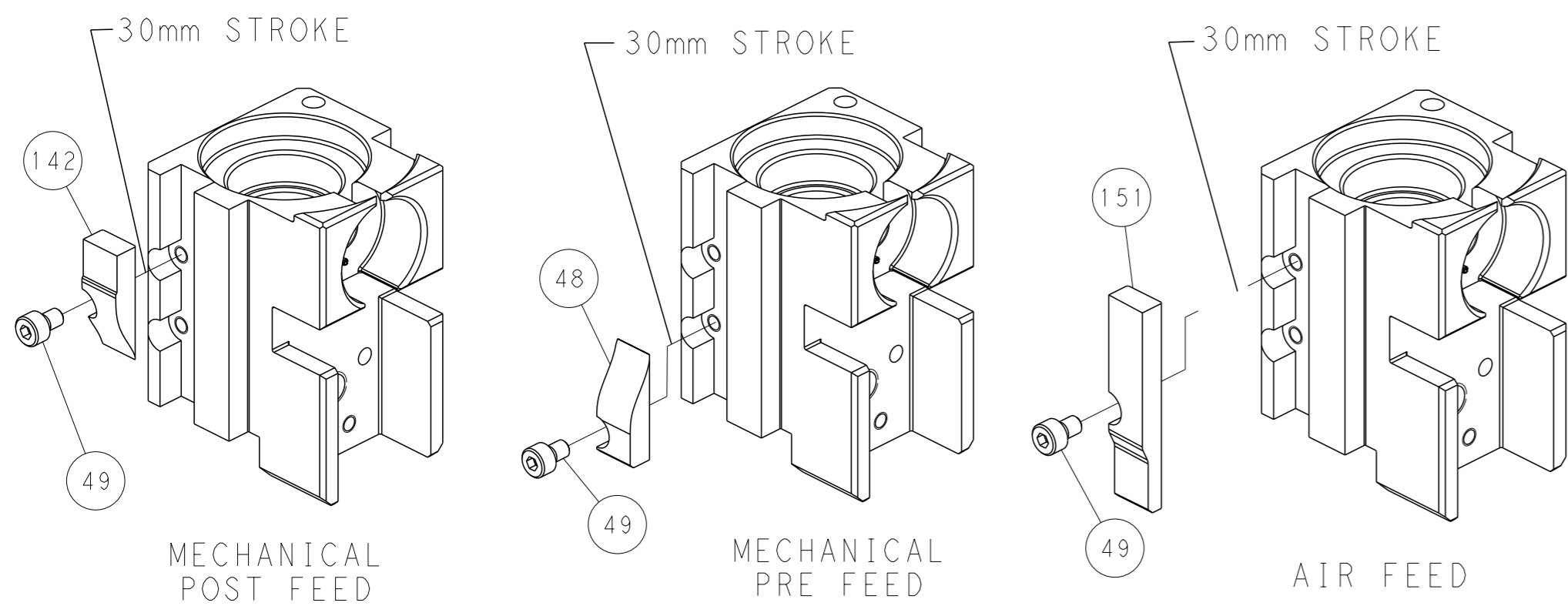
PNEUMATIC



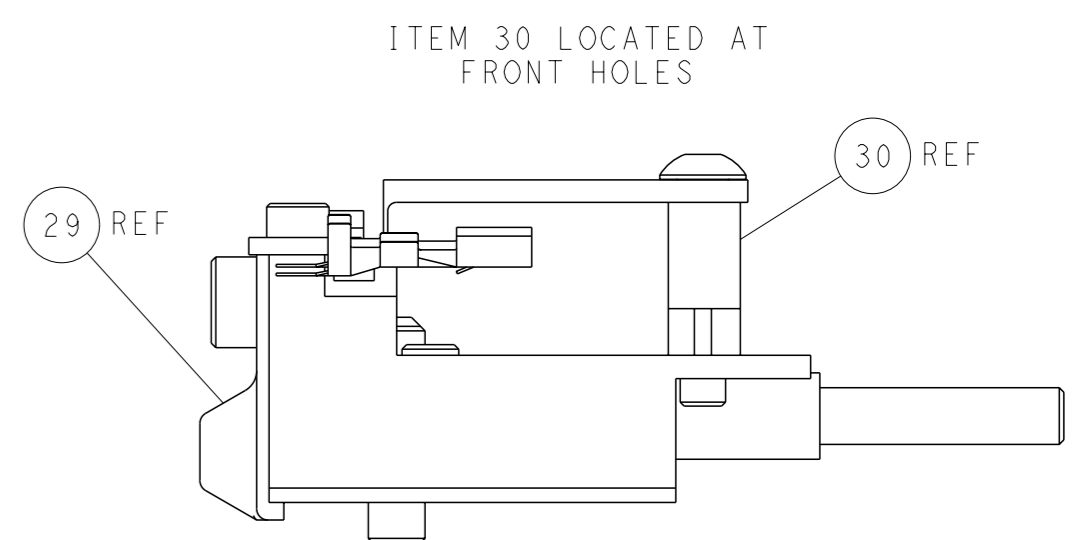
SERVO LATCH PLATE



CAM POSITIONS



TERMINAL SUPPORT LOCATION



FEED TRACK POSITION
GUIDE BY INSULATION BARREL

PACIFIC VERSION
Shown on sheets 3 of 4 & 4 of 4
(Atlantic version shown on sheets 1 of 4 & 2 of 4)

<small>THIS DRAWING IS A CONTROLLED DOCUMENT FOR TYCO ELECTRONICS CORPORATION. IT IS SUBJECT TO CHANGE AND THE USER MUST CONTACT THE ENGINEERING ORGANIZATION SHOULD BE CONTACTED FOR THE LATEST REVISION.</small>		OWN: M. ZHAO CHK: K. ZHANG APVD: K. ZHANG PRODUCT SPEC: - APPLICATION SPEC: - MATERIAL: - FINISH: -	DATE: 07SEP2017 NAME: Ocean Side Feed Applicator SIZE: A1 SCALE: 1:2 SHEET: 4 of 4 REV: A	TE Connectivity Harrisburg, PA 17105-3608
DIMENSIONS: mm TOLERANCES UNLESS OTHERWISE SPECIFIED: 0 PLC ± 1 PLC ± 2 PLC ± 3 PLC ± 4 PLC ± ANGLES FINISH ±	WEIGHT: - CUSTOMER ACCESSIBLE PRODUCTION DRAWING	CAGE CODE: 00779 DRAWING NO: 2836891	RESTRICTED TO: -	SHEETS 1 & 2 ARE NOT REQUIRED FOR PACIFIC VERSION