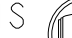





APPLICATOR DATA		
CRIMP	SIZE	TYPE
WIRE	3.56 mm [.140]	F
INSUL	4.57 mm [.180]	OV
APPLICATOR INSTRUCTIONS 408-10389		

TERMINAL DATA: G & H(LEAR) TERMINAL LEAR CRIMP SPECIFICATION			
TERMINAL NAME: 5.8x0.8 CONTACT TERMINAL			
WIRE STRIP LENGTH 5.50-6.00 mm [.217-.236 IN]		INSULATION DIAMETER RANGE Ø2.20-3.70 mm [.087-.146 IN]	
TERMINAL APPLICATION  26650 Rev 02.09.2002		-	
SPECIFICATION		-	
TERMINALS APPLIED			
TE TERMINAL	G & H(LEAR) TERMINAL	TE TERMINAL	G & H(LEAR) TERMINAL
1949261-1	26650.330.186		

WIRE SIZE		CRIMP HEIGHT mm [INCH]		CRIMP HEIGHT REFERENCE SETTING
4.00mm2		2.05+/-0.10 [0.081+/-0.004]		4.8
2 X 1.5mm2		1.90+/-0.05 [0.075+/-0.002]		6.3
2.50mm2		1.80+/-0.05 [0.071+/-0.002]		7.4



- RECOMMENDED SPARE PARTS

- 2 GREASE BEARING SURFACES LIGHTLY

3. LUBRICATE DAILY PER THE APPLICATOR INSTRUCTION SHEET SUPPLIED WITH THE APPLICATOR.

- | | | |
|---|---|-------------|
| 4 | APPLICATOR SPECIFIC DATA TO BE ENTERED INTO BLANK MEMORY CHIP AT ASSEMBLY. SEE BELOW FOR PART NUMBER: | |
| | MECHANICAL FEED WITH "SMART APPLICATOR" CONVERSION: | 8-2836864-4 |
| | PNEUMATIC FEED WITH "SMART APPLICATOR" CONVERSION: | 8-2836864-4 |
| | SERVO FEED WITH "FINE CRIMP HEIGHT ADJUST": | 8-2836864-5 |
| | SERVO FEED WITH "NON-CRIMP HEIGHT ADJUST": | 8-2836864-6 |

5. ADJUSTMENT OF THE STRIPPER MAY BE REQUIRED WHEN MOVING THE APPLICATOR BETWEEN BENCH AND LEADMAKER APPLICATIONS.

- 6 APPLY PART NUMBER 1-23419-5 LOCTITE TO THREADS OF ITEM 62.
APPLY PART NUMBER 2-23419-6 LOCTITE TO THREADS OF ITEM 242.
FOR -6 ONLY APPLY PART NUMBER 1-23419-5 LOCTITE TO THREADS OF ITEM 37.

- 7 GREASE THREADS, GROOVE AND O-RING ON ITEMS 35 & 252.

- 8 MAGNET, ITEM 166 MUST BE ORIENTED CORRECTLY IN ORDER TO PROPERLY ACTUATE THE COUNTER.

- 9 CRIMP HEIGHT REFERENCE SETTING WAS THE SETTING USED WHEN THE APPLICATOR WAS QUALIFIED AT THE FACTORY. ADJUSTMENT MAY BE NECESSARY WHEN RUNNING APPLICATOR IN THE FIELD.

- 10 SPARE FEED CAM STORAGE LOCATION REFER TO INSTRUCTION SHEET
FOR ADDITIONAL INFORMATION.

- 11 TO CONVERT THE APPLICATOR TO A NON-CARRIER CUTTING STYLE, REMOVE ITEM 13 AND ATTACH TO THE LOCATION ON THE BACK SIDE OF THE HOUSING. REFER TO INSTRUCTION SHEET FOR ADDITIONAL INFORMATION.

- 12 WHEN ASSEMBLING A NON CRIMP HEIGHT ADJUST APPLICATOR (-6)
USE SHIMS FROM ITEM 260 TO ACHIEVE A NOMINAL SHIM HEIGHT OF 3.75.

APPLICATOR STYLE CONVERSION CHART



CONVERT TO	PART NUMBERS REQUIRED					
PNEUMATIC FEED	2119950-1	1338683-8	5-18022-5	2119641-1	2119799-1	2063440-1
SERVO LATCH PLATE	2119951-1	-	8-2836864-5	1901094-3	-	2168400-6 (QUANTITY 2)
SMART APPLICATOR	2161326-1	-	8-2836864-4	-	-	-
MECHANICAL FEED	2119949-1	1338683-8	5-18022-5	2119653-1	-	-
SERVO LATCH PLATE	2119951-1	-	8-2836864-5	1901094-3	-	2168400-6 (QUANTITY 2)
SMART APPLICATOR	2161326-1	-	8-2836864-4	-	-	-
MECHANICAL FEED	2119949-1	1338683-8	5-18022-5	2119653-1	-	-
PNEUMATIC FEED	2119950-1	1338683-8	5-18022-5	2119641-1	2119799-1	2063440-1
-	-	-	-	-	-	-
-	-	-	-	-	-	-
-	-	-	-	-	-	-
-	-	-	-	-	-	-

APPLICATOR DATA

CRIMP	SIZE	TYPE
WIRE	3.56 mm [.140]	F
INSUL	4.57 mm [.180]	OV

APPLICATOR INSTRUCTIONS
408-10389

TERMINAL DATA: G & H(LEAR) TERMINAL LEAR CRIMP SPECIFICATION			
TERMINAL NAME: 5.8x0.8 CONTACT TERMINAL			
WIRE STRIP LENGTH 5.50-6.00 mm [.217-.236 IN]		INSULATION DIAMETER RANGE Ø2.20-3.70 mm [.087-.146 IN]	
TERMINAL APPLICATION SPECIFICATION		26650 Rev 02.09.2002	
TERMINALS APPLIED			
TE TERMINAL 1949261-1	G & H(LEAR) TERMINAL 26650.330.186	TE TERMINAL	G & H(LEAR) TERMINAL

WIRE SIZE		CRIMP HEIGHT mm [INCH]		CRIMP HEIGHT REFERENCE SETTING
4.00mm2		2.05+/-0.10 [0.081+/-0.004]		4.8
2 X 1.5mm2		1.90+/-0.05 [0.075+/-0.002]		6.3
2.50mm2		1.80+/-0.05 [0.071+/-0.002]		7.4

```
*WARNING
```

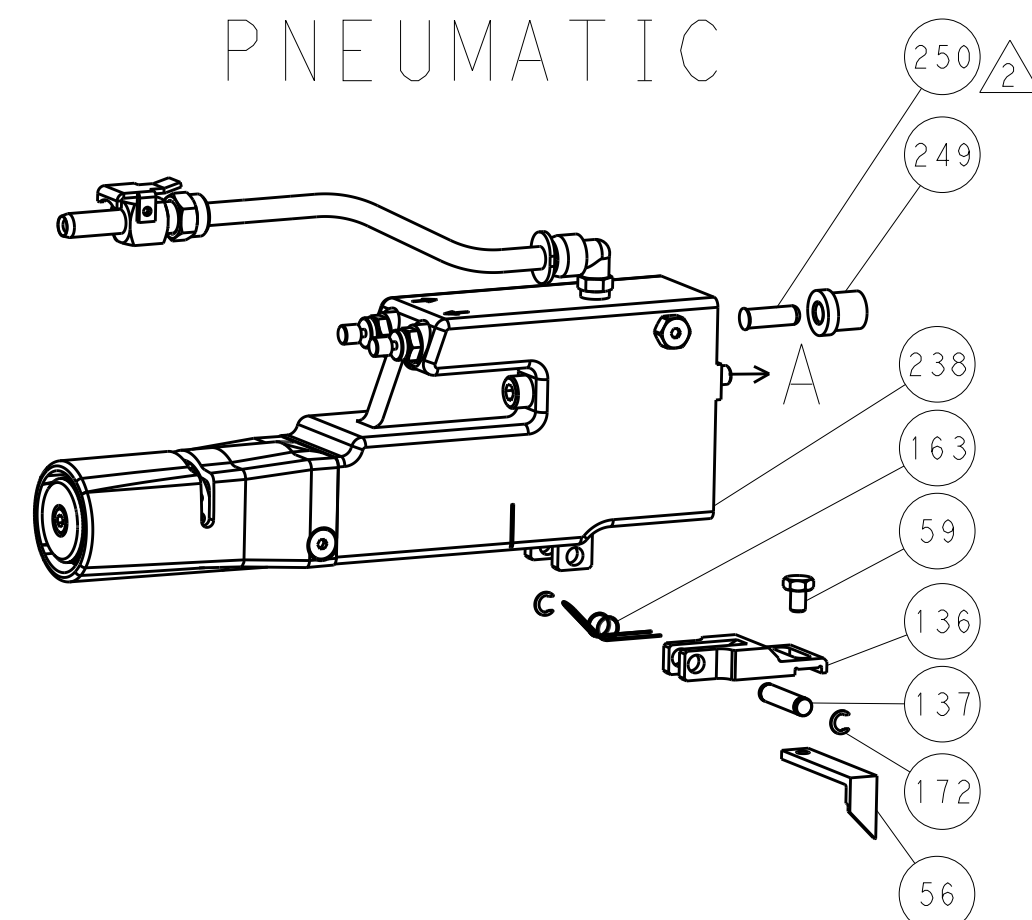
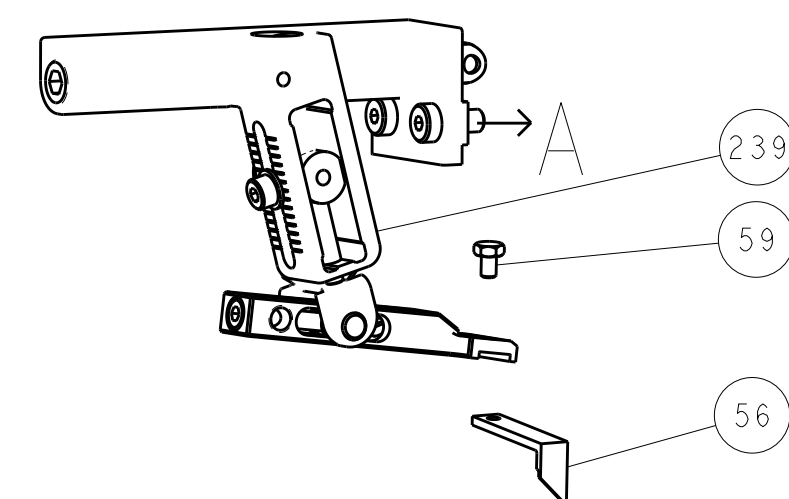
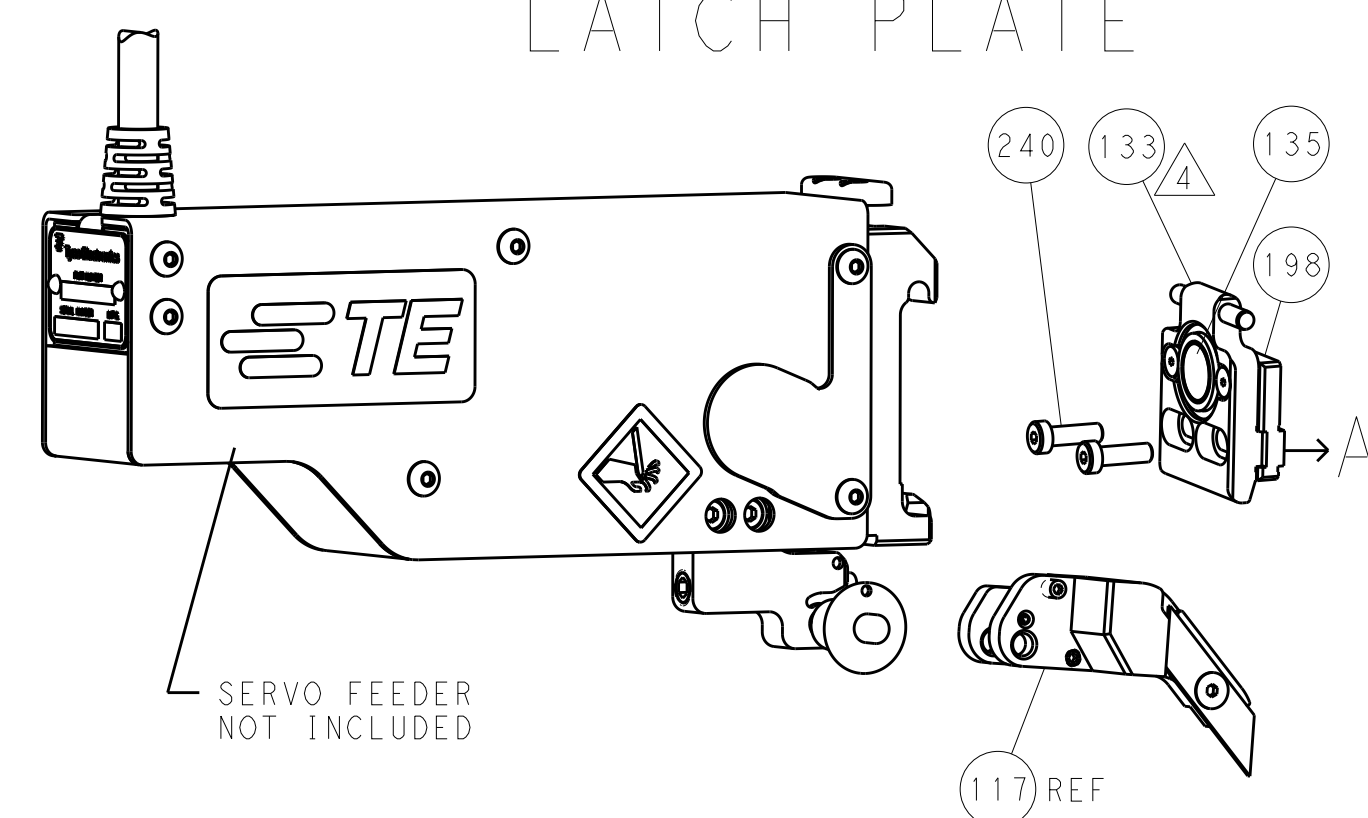
ON INSTALLATION, SET WIRE DISC, ITEM 40 TO LARGEST WIRE SIZE SETTING. USE OF SETTINGS BELOW MINIMUM REQUIRED CRIMP HEIGHT SETTING WILL CAUSE DAMAGE TO CRIMP TOOLING.

2		1	
SET UP GAUGE 2119599-1		LOC A	DIST 66
REVISIONS			
P	LTR	DESCRIPTION	DATE
	1	DEVELOPMENT	02AUG2017
	A	RELEASED	01SEP2017

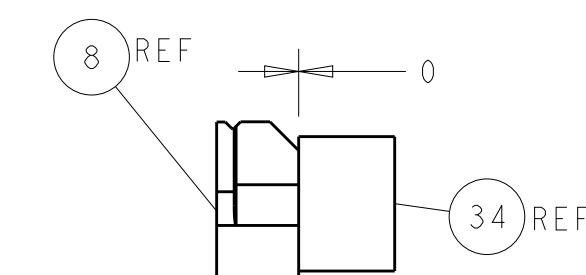
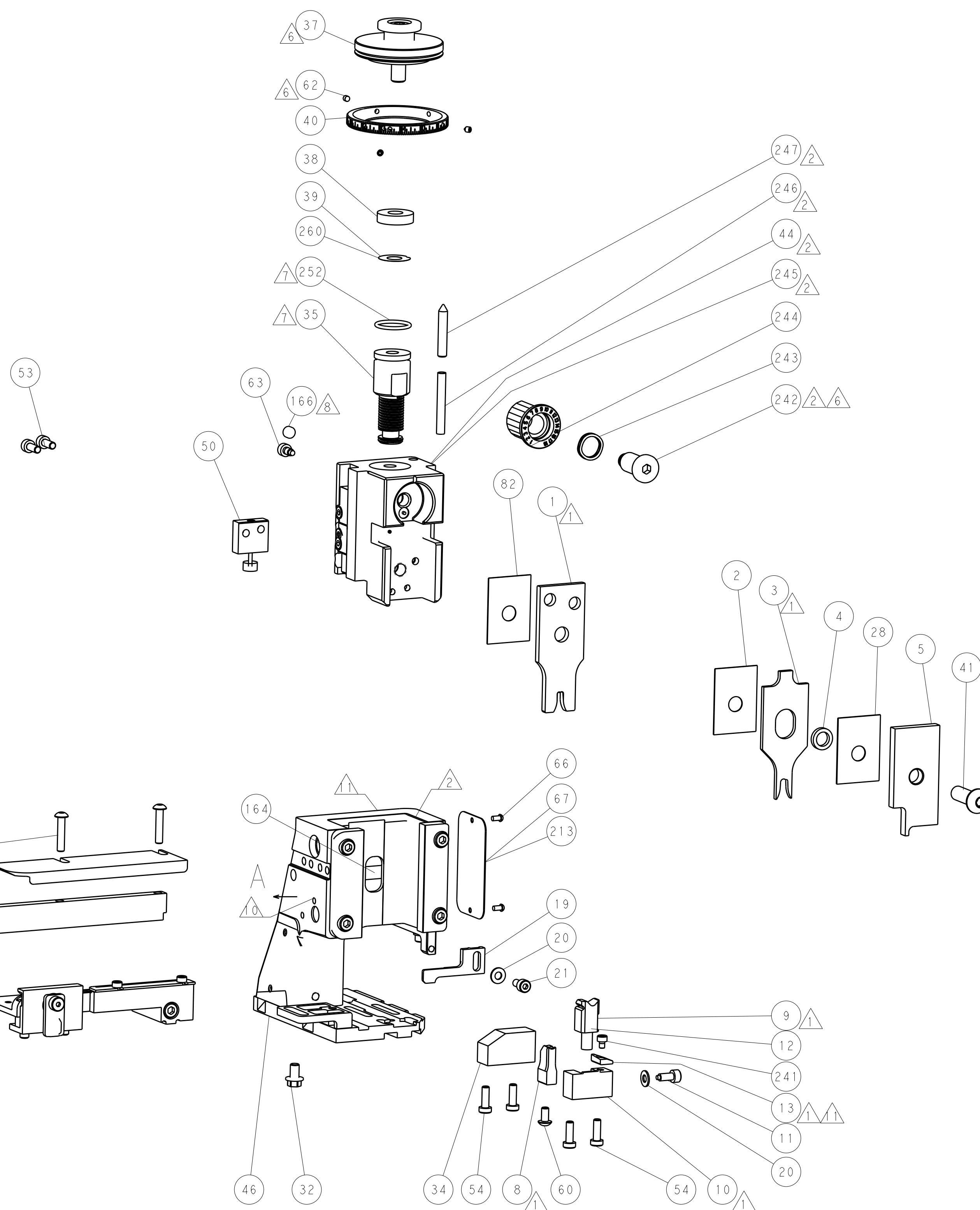
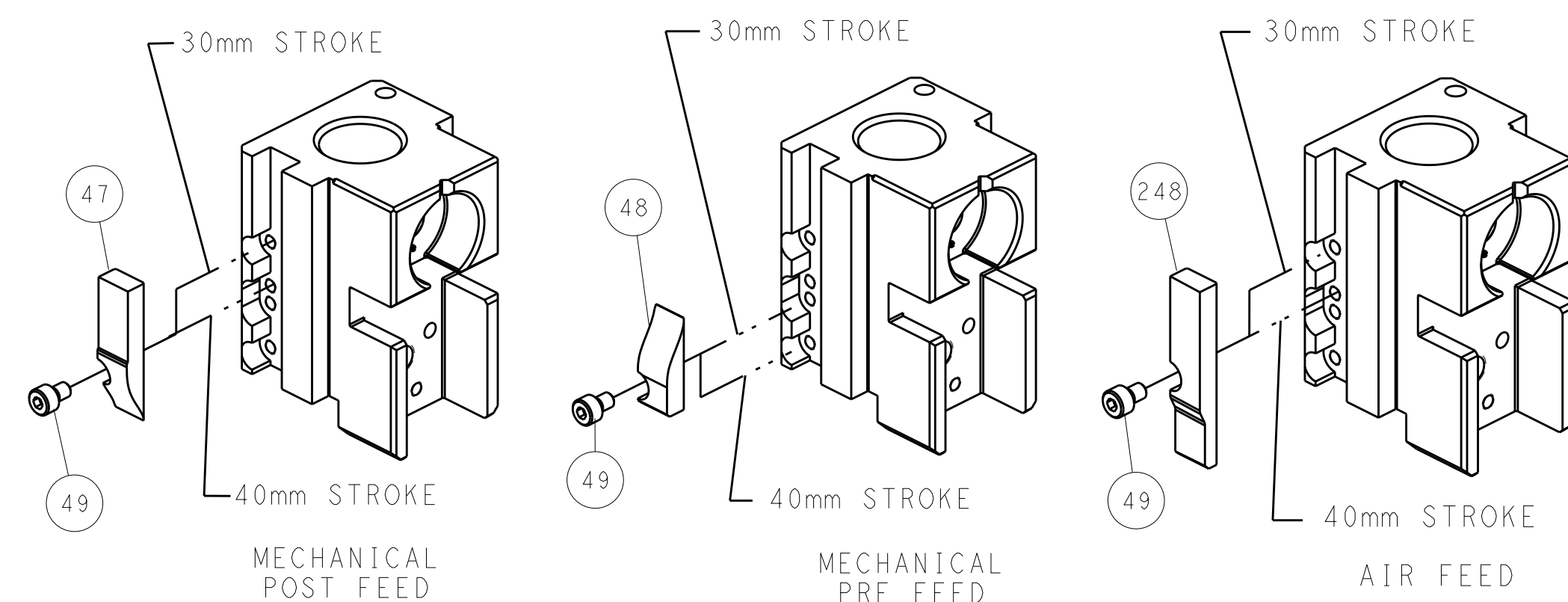
2	-	-	1	-	-	-	2119957-2	APPLICATOR SHIM PACK	260
	-	1	-	1	1	1	8-21084-0	O-RING, .676 ID, .070 DIA MAT.	252
6	-	-	-	-	1	-	2119640-1	PUSH ROD, AIR FEED	250
	-	-	-	-	1	-	1803259-1	BUSHING, FLANGED	249
	-	-	-	-	1	-	2119641-1	FEED CAM, AIR FEED	248
	-	1	-	1	1	1	2119798-1	DETENT PIN	247
	-	1	-	1	1	1	1-22279-3	SPRING, COMPRESSION	246
	-	-	1	-	-	-	2119758-1	RAM, AMP STYLE, SIDE FEED, NON-ADJ.	245
	-	1	1	1	1	1	2119082-7	CAM, SNAIL, INSULATION ADJUSTMENT	244
	-	1	1	1	1	1	2079764-1	WASHER, WAVE SPRING, CREST-TO-CREST	243
	-	1	1	1	1	1	2119083-1	RETAINER, INSULATION DIAL	242
	-	1	1	1	1	1	7-18023-7	SCR, SKT HD CAP M3 X 4.0	242
8	-	-	2	2	-	-	2168400-6	SHCS, LOW HEAD, RoHS, M5 X 16	242
	-	-	-	-	-	1	2119580-1	MECHANICAL FEED ASSEMBLY	239
	-	-	-	-	1	-	2063440-1	AIR FEED MODULE	238
	-	-	1	1	-	-	2119740-2	TAG,IDENTIFICATION	213
	-	-	1	1	-	-	1901094-3	SPACER, FEEDER	198
	-	-	-	-	2	-	21045-3	RING, RETAIN, EXTERN, 3/16 CRESCENT	172
	-	1	1	1	1	1	994969-1	MAGNET, RARE EARTH HIGH ENERGY	166
	-	REF	REF	REF	REF	REF	994970-2	COUNTER, MAGNETIC	164
	-	-	-	-	1	-	240638-1	SPRING, FEED FINGER	163
	-	-	-	-	1	-	3-23627-7	PIN, RETAIN, GRVD, 3/16 X .854	137
6	-	-	-	-	1	-	2119799-1	HOLDER,FEED FINGER, AF	136
	-	-	REF	REF	-	-	SEE NOTE 4	MEMORY CHIP, PROGRAMMED	135
	-	-	1	1	-	-	1633743-1	SERVO FEED LATCH ASM	133
	-	-	REF	REF	-	-	2119944-1	FEED FINGER ASSEMBLY,SF	117
	-	1	1	1	1	1	455888-4	SPACER, CRIMPER	82
	-	1	1	1	1	1	2119956-1	DOCUMENTATION PACKAGE	71
	-	1	-	-	1	1	2119740-1	TAG,IDENTIFICATION	67
	-	2	2	2	2	2	2168078-1	SCREW, DRIVE, RH, RoHS, 2 x .188	66
	-	1	-	1	1	1	2119793-1	LIMITER, ADJUSTMENT BOLT	63
	-	3	-	3	3	3	992763-5	SCR, SET, SOC, CONE PNT, M3 x 4.0	62
6	-	1	1	1	1	1	2079383-4	SCR, BHSC, RoHS (M4 X 8)	60
	-	-	-	-	1	1	5-18022-5	SCR, HEX HD CAP, M4 X 6.0	59
	-	-	-	-	1	1	1338683-8	FEED PAWL	56
	-	4	4	4	4	4	2168400-1	SHCS, LOW HEAD, RoHS, M4 X 12	54
	-	2	2	2	2	2	1-2168083-0	SCR, SKT HD CAP, RoHS, M4 X 10	53
	-	1	1	1	1	1	1803382-2	HOLD DOWN, SPRING LOADED	50
	-	-	-	-	1	2	18023-9	SCR, SKT HD CAP M4 X 6.0	49
	-	-	-	-	-	1	2119652-1	FEED CAM, PRE FEED	48
	-	-	-	-	-	1	2119653-1	FEED CAM, POST FEED	47
	-	1	1	1	1	1	2119656-9	APPLICATOR BASIC ASSEMBLY, SF	46
6	-	1	-	1	1	1	2119370-1	RAM, AMP STYLE, SIDE FEED	44
	-	1	1	1	1	1	2079383-7	SCR, BHSC, RoHS (M8 X 25)	41
	-	1	-	1	1	1	2119645-1	DISC, NUMBERED FA WIRE ADJUSTMENT	40
	-	1	-	1	1	1	2119957-1	APPLICATOR SHIM PACK	39
	-	1	1	1	1	1	2119644-2	RAM WASHER, PRECISION	38
	-	1	1	1	1	1	2119085-1	FA HEAD, ATLANTIC STYLE	37
	-	1	-	1	1	1	2119092-1	BOLT, ADJUSTMENT	35
	-	1	1	1	1	1	1-1752356-5	SUPPORT, TERMINAL	34
	-	2	2	2	2	2	2079383-5	SCR, BHSC, RoHS (M4 X 20)	33
	-	1	1	1	1	1	2161328-1	HEX HEAD, FLANGED, M5 x 8mm LONG	32
1	-	1	1	1	1	1	1-1320908-2	SPACER, STRIP GUIDE	30
	-	1	1	1	1	1	2119959-2	ASSEMBLY, STRIP GUIDE	29
	-	1	1	1	1	1	455888-5	SPACER, CRIMPER	28
	-	1	1	1	1	1	1320928-2	STRIP GUIDE	24
	-	1	1	1	1	1	2168083-2	SCR, SKT HD CAP, RoHS, M4 X 8.0	21
	-	2	2	2	2	2	1-18028-2	WASHER, FLAT, REG M4	20
	-	1	1	1	1	1	2119533-1	STRIPPER, SIDE FEED	19
	-	1	1	1	1	1	2119806-1	INSERT, SHEAR	13
	-	1	1	1	1	1	3-22280-3	SPRING, COMPRESSION	12
	-	1	1	1	1	1	1-356885-4	STOP, SHEAR	11
1	-	1	1	1	1	1	2119805-1	SHEAR HOLDER, FRONT	10
	-	1	1	1	1	1	1803095-1	FLOATING SHEAR, FRONT -	9
	1	1	1	1	1	1	5-1803318-5	ANVIL, COMBINATION	8
	-	-	-	-	-	-	-	-	7
	-	-	-	-	-	-	-	-	6
	-	1	1	1	1	1	2119757-6	DEPRESSOR, SHEAR	5
	-	1	1	1	1	1	238011-4	BLOCK, CRIMPER SPACER	4
	1	1	1	1	1	1	1-1633963-9	CRIMPER, INSULATION OVERLAP PREMIUM	3
	-	1	1	1	1	1	455888-4	SPACER, CRIMPER	2
	1	1	1	1	1	1	1-456411-0	CRIMPER, WIRE PREMIUM	1
-77	-7	-6	-5	-2	-1	PART NO	DESCRIPTION	ITEM NO	

[illegible]

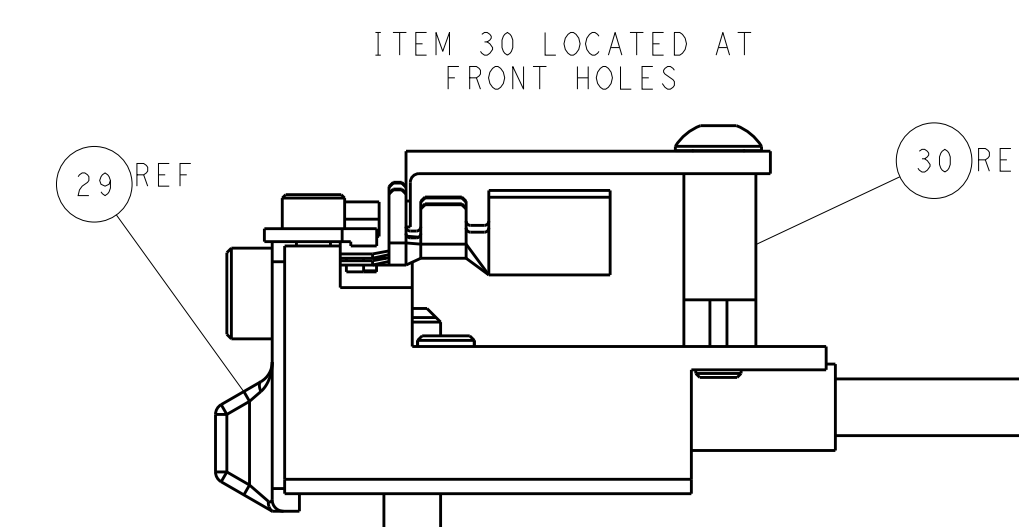
PNEUMATIC

SERVO
LATCH PLATE

CAM POSITIONS



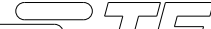

TERMINAL SUPPORT LOCATION



FEED TRACK POSITION
GUIDE BY INSULATION BARREL

ATLANTIC VERSION

Shown on sheets 1 of 4 & 2 of 4
(Pacific version shown on sheets 3 of 4 & 4 of 4)

<small>THIS DRAWING IS A CONFIDENTIAL DOCUMENT FOR TFCO INDUSTRIES CORPORATION IT IS SUBJECT TO CHANGE AND THE CONTROLLING ENGINEERING ORGANIZATION MAY BE MODIFIED WITHOUT NOTICE FOR THE LATEST REVISION</small>		DWN F ZHANG 02AUG2017 CHK K ZHANG 02AUG2017 APPV K ZHANG 02AUG2017		 TE Connectivity Harrisburg, PA 17105-3608	
DIMENSIONS: mm		TOLERANCES UNLESS OTHERWISE SPECIFIED: 0 PLC ±. 1 PLC ±. 2 PLC ±. 3 PLC ±. 4 PLC ±. ANGLES ±. FINISH		NAME Ocean Side Feed Applicator -	
		PRODUCT SPEC - APPLICATION SPEC -		SIZE A 1	
MATERIAL -		WEIGHT -		CAGE CODE 00779	
				DRAWING NO C=2836864	
				RESTRICTED TO -	
		Customer Accessible Production Drawing		SCALE 1:2 SHEET 2 OF 4 REV A	

8

7

6

5

4

3

2

1

THIS DRAWING IS UNPUBLISHED.

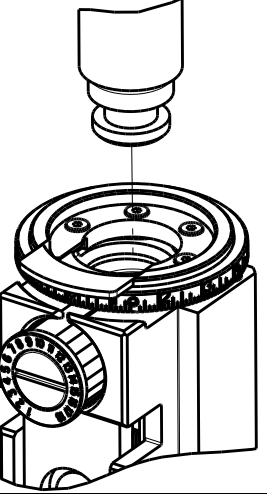
RELEASED FOR PUBLICATION

20

© COPYRIGHT 20

BY TYCO ELECTRONICS CORPORATION. ALL RIGHTS RESERVED.

PACIFIC VERSION
TERMINATOR
INTERFACE ADAPTER



PART
NUMBER

2-2836864-1

REVISION

A

DESCRIPTION

FINE CRIMP HEIGHT ADJUST

FEED TYPE

MECHANICAL

CONVERT TO

PNEUMATIC FEED

PART NUMBERS REQUIRED

2119950-1

1338683-8

5-18022-5

2119641-2

2119799-1

2063440-1

SERVO LATCH PLATE

2119951-1

-

8-2836864-5

1901094-3

-

2168400-6 (QUANTITY 2)

SMART APPLICATOR

2161326-1

-

8-2836864-4

-

-

MECHANICAL FEED

2119949-1

1338683-8

5-18022-5

2119653-2

-

-

SERVO LATCH PLATE

2119951-1

-

8-2836864-5

1901094-3

-

2168400-6 (QUANTITY 2)

SMART APPLICATOR

2161326-1

-

8-2836864-4

-

-

MECHANICAL FEED

2119949-1

1338683-8

5-18022-5

2119653-2

-

-

PNEUMATIC FEED

2119950-1

1338683-8

5-18022-5

2119641-2

2119799-1

2063440-1

2-2836864-2

A

FINE CRIMP HEIGHT ADJUST

PNEUMATIC

2-2836864-5

A

FINE CRIMP HEIGHT ADJUST

SERVO LATCH PLATE

2-2836864-7

A

FINE CRIMP HEIGHT ADJUST

NONE

7-2836864-7

A

CRIMP TOOLING KIT

-

APPLICATOR DATA

CRIMP

SIZE

TYPE

WIRE

3.56 mm [.140]

F

INSUL

4.57 mm [.180]

OV

APPLICATOR INSTRUCTIONS

408-10389

TERMINAL DATA: G & H(LEAR) TERMINAL LEAR CRIMP SPECIFICATION

TERMINAL NAME: 5.8x0.8 CONTACT TERMINAL

WIRE STRIP LENGTH

5.50-6.00 mm [.217-.236 IN]

INSULATION DIAMETER RANGE

Ø2.20-3.70 mm [.087-.146 IN]

TERMINAL APPLICATION SPECIFICATION

26650 Rev 02.09.2002

TE TERMINAL

G & H(LEAR) TERMINAL

TE TERMINAL

G & H(LEAR) TERMINAL

WIRE SIZE

CRIMP HEIGHT mm [INCH]

CRIMP HEIGHT REFERENCE SETTING

4.00mm2

2.05+/-0.10 [.081+/- .004]

4.8

2 X 1.5mm2

1.90+/-0.05 [.075+/- .002]

6.3

2.50mm2

1.80+/-0.05 [.071+/- .002]

7.4

RECOMMENDED SPARE PARTS

GREASE BEARING SURFACES LIGHTLY

3. LUBRICATE DAILY PER THE APPLICATOR INSTRUCTION SHEET SUPPLIED WITH THE APPLICATOR.

4. APPLICATOR SPECIFIC DATA TO BE ENTERED INTO BLANK MEMORY CHIP AT ASSEMBLY. SEE BELOW FOR PART NUMBER:
MECHANICAL FEED WITH "SMART APPLICATOR" CONVERSION: 8-2836864-4
PNEUMATIC FEED WITH "SMART APPLICATOR" CONVERSION: 8-2836864-4
SERVO FEED WITH "FINE CRIMP HEIGHT ADJUST": 8-2836864-5

5. ADJUSTMENT OF THE STRIPPER MAY BE REQUIRED WHEN MOVING THE APPLICATOR BETWEEN BENCH AND LEADMAKER APPLICATIONS.

6. APPLY PART NUMBER 1-23419-5 LOCTITE TO THREADS OF ITEM 62.
APPLY PART NUMBER 2-23419-6 LOCTITE TO THREADS OF ITEM 242.

7. GREASE THREADS, GROOVE AND O-RING ON ITEMS 139 & 152.

8. MAGNET MUST BE ORIENTED CORRECTLY IN ORDER TO PROPERLY ACTUATE THE COUNTER.

9. CRIMP HEIGHT REFERENCE SETTING WAS THE SETTING USED WHEN THE APPLICATOR WAS QUALIFIED AT THE FACTORY. ADJUSTMENT MAY BE NECESSARY WHEN RUNNING APPLICATOR IN THE FIELD.

10. SPARE FEED CAM STORAGE LOCATION REFER TO INSTRUCTION SHEET FOR ADDITIONAL INFORMATION.

11. TO CONVERT THE APPLICATOR TO A NON-CARRIER CUTTING STYLE, REMOVE ITEM 13 AND ATTACH TO THE LOCATION ON BACK SIDE OF THE HOUSING. REFER TO INSTRUCTION SHEET FOR ADDITIONAL INFORMATION.

PACIFIC VERSION

Shown on sheets 3 of 4 & 4 of 4

(Atlantic version shown on sheets 1 of 4 & 2 of 4)

SET UP GAUGE

2119599-1

LOC

A

DIST

66

REVISIONS

P

LYR

DESCRIPTION

DATE

OWN

APVD

-

-

SEE SHEET 1

-

-

-

-

1

1

1

1

2119782-1

FINE ADJUST HEAD ASM, PACIFIC STYLE

251

-

-

-

1

-

2119640-1

PUSH ROD, AIR FEED

250

-

-

-

1

-

1803259-1

BUSHING, FLANGED

249

-

1

1

1

1

1-22279-3

SPRING, COMPRESSION

246

-

1

1

1

1

2119082-7

CAM, SNAIL, INSULATION ADJUSTMENT

244

-

1

1

1

1

2079764-1

WASHER, WAVE SPRING, CREST-TO-CREST

243

-

1

1

1

1

2119083-1

RETAINER, INSULATION DIAL

242

-

1

1

1

1

7-18023-7

SCR, SKT HD CAP M3 X 4.0

241

-

-

2

-

-

2168400-6

SHCS, LOW HEAD, RoHS, M5 X 16

240

-

-

-

-

1

2119580-1

MECHANICAL FEED ASSEMBLY

239

-

-

-

1

-

2063440-1

AIR FEED MODULE

238

-

-

1

-

-

2119740-2

TAG,IDENTIFICATION

213

-

-

1

-

-

1901094-3

SPACER, FEEDER

198

-

-

-

2

-

21045-3

RING, RETAIN, EXTERN, 3/16 CRESCENT

172

-

1

1

1

1

994969-1

MAGNET, RARE EARTH HIGH ENERGY

166

-

REF

REF

REF

REF

994970-2

COUNTER, MAGNETIC

164

-

-

-

1

-

240638-1

SPRING, FEED FINGER

163

-

1

1

1

1

8-21084-1

O-RING, .801 ID, .070 DIA. MAT.

152

-

-

-

1

-

2119641-2

FEED CAM, AIR FEED

151

-

1

1

1

1

2119798-2

DETENT PIN

145

-

1

1

1

1

2079383-8

SCR, BHSC, RoHS (M4 X 16)

144

-

4

4

4

4

2168400-5

SHCS, LOW HEAD, RoHS, M4 X 20

143

-

-

-

-

1

2119653-2

FEED CAM, POST FEED

142

-

1

1

1

1

1-2119656-0

APPLICATOR BASIC ASSEMBLY, SF

141

-

1

1

1

1

2119650-1

RAM, ASIAN STYLE, SIDE FEED

140

-

1

1

1

1

2119092-2

BOLT, ADJUSTMENT

139

-

-

-

1

-

3-23627-7

PIN, RETAIN, GRVD, 3/16 X .854

137

-

-

-

1

-

2119799-1

HOLDER,FEED FINGER, AF

136

-

-

REF

-

-

SEE NOTE 4

MEMORY CHIP, PROGRAMMED

135

-

-

1

-

-

1633743-1

SERVO FEED LATCH ASM

133

-

-

REF

-

-

2119944-1

FEED FINGER ASSEMBLY,SF

117

-

1

1

1

1

455888-4

SPACER, CRIMPER

82

-

1

1

1

1

2119956-1

DOCUMENTATION PACKAGE

71

-

1

-

1

1

2119740-1

TAG,IDENTIFICATION

67

-

2

2

2

2

2168078-1

SCREW, DRIVE, RH, RoHS, 2 x .188

66

-

1

1

1

1

2119793-1

LIMITER, ADJUSTMENT BOLT

63

-

3

3

3

3

992763-5

SCR, SET, SOC, CONE PNT, M3 x 4.0

62

-

-

-

1

1

5-18022-5

SCR, HEX HD CAP, M4 X 6.0

59

-

-

-

1

1

1338683-8

FEED PAWL

56

-

2

2

2

2

1-2168083-0

SCR, SKT HD CAP, RoHS, M4 X 10

53

-

1

1

1

1

1803382-2

HOLD DOWN, SPRING LOADED

50

-

-

-

1

2

18023-9

SCR, SKT HD CAP M4 X 6.0

49

-

-

-

-

1

2119652-1

FEED CAM, PRE FEED

48

-

1

1

1

1

2079383-7

SCR, BHSC, RoHS (M8 X 25)

41

-

1

1

1

1

2119645-1

DISC, NUMBERED FA WIRE ADJUSTMENT

40

-

1

1

1

1

2119957-1

APPLICATOR SHIM PACK

39

-

1

1

1

1

2119644-2

RAM WASHER, PRECISION

38

-

1

1

1

1

1-1752356-5

SUPPORT, TERMINAL

34

-

2

2

2

2

2079383-5

SCR, BHSC, RoHS (M4 X 20)

33

-

1

1

1

1

2161328-1

HEX HEAD, FLANGED, M5 x 8mm LONG

32

-

1

1

1

1

1-1320908-2

SPACER, STRIP GUIDE

30

-

1

1

1

1

2119959-2

ASSEMBLY, STRIP GUIDE

29

-

1

1

1

1

455888-5

SPACER, CRIMPER

28

-

1

1

1

1

1320928-2

STRIP GUIDE

24

-

1

1

1

1

2168083-2

SCR, SKT HD CAP, RoHS, M4 X 8.0

21

-

2

2

2

2

1-18028-2

WASHER, FLAT, REG M4

20

-

1

1

1

1

2119533-1

STRIPPER, SIDE FEED

19

-

1

1

1

1

2119806-1

INSERT, SHEAR

13

-

1

1

1

1

3-22280-3

SPRING, COMPRESSION

12

-

1

1

1

1

1-356885-4

STOP, SHEAR

11

-

1

1

1

1

2119805-1

SHEAR HOLDER, FRONT

10

-

1

1

1

1

1803095-1

FLOATING SHEAR, FRONT -

9

-

1

1

1

1

1-1803318-5

ANVIL, COMBINATION

8

-

-

-

-

-

-

-

7

-

-

-

-

-

-

-

6

-

1

1

1

1

2119757-6

DEPRESSOR, SHEAR

5

-

1

1

1

1

238011-4

BLOCK, CRIMPER SPACER

4

-

1

1

1

1

1-1633963-9

CRIMPER, INSULATION OVERLAP PREMIUM

3

-

1

1

1

1

455888-4

SPACER, CRIMPER

2

-

1

1

1

1

1-456411-0

CRIMPER, WIRE PREMIUM

1

-77

-27

-25

-22

-21

PART NO

DESCRIPTION

ITEM NO

THE FOLLOWING IS A SUMMARY OF THE INFORMATION CONTAINED IN THIS DRAWING. IT IS SUBJECT TO CHANGE WITHOUT NOTICE AND WITHOUT LIABILITY TO THE ORGANIZATION THAT ISSUED IT. IT IS THE RESPONSIBILITY OF THE USER TO OBTAIN THE LATEST REVISIONS.

DIMENSIONS:

mm

0 PLC

1 PLC

2 PLC

3 PLC

4 PLC

ANGLES

FINISH

±

±

±

±

±

±

TOOLERANCES UNLESS OTHERWISE SPECIFIED:

±

±

±

±

±

±

OWN

F. ZHANG

02AUG2017

CHK

K. ZHANG

02AUG2017

APVD

K. ZHANG

02AUG2017

NAME

Ocean Side Feed Applicator

SIZE

CAGE CODE

DRAWING NO

RESTRICTED TO

Customer Accessible Production Drawing

SCALE

1:2

SHEET

3

OF

4

REV

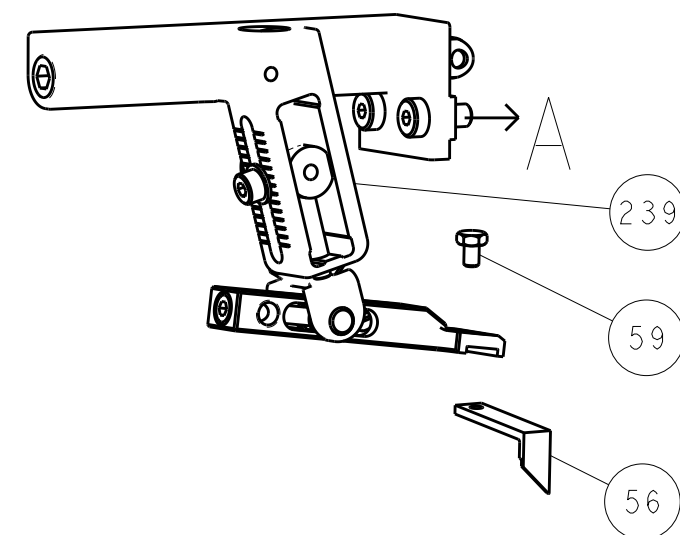
A

AMP 4805 REV 31MAR2000

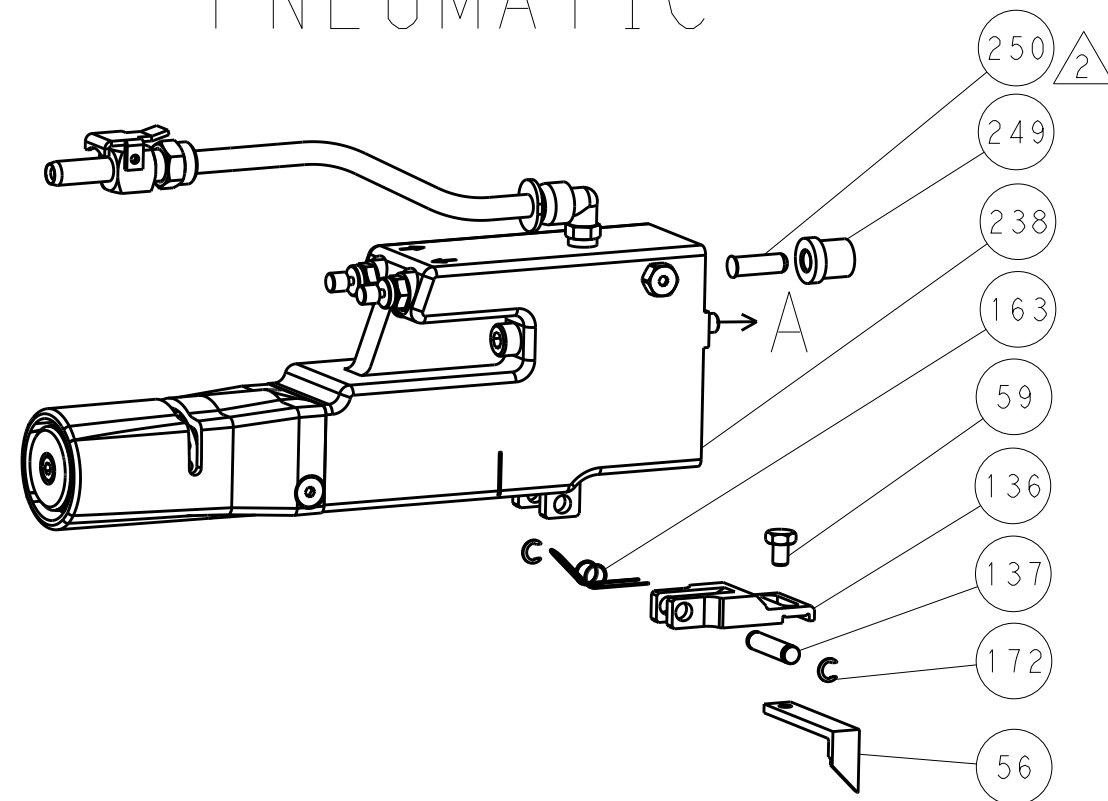
SHEETS 1 & 2 ARE NOT REQUIRED FOR PACIFIC VERSION

LOC	DIST	REVISIONS					
		P	LTR	DESCRIPTION	DATE	DWN	APVD
A	66	-	-	SEE SHEET 1	-	-	-

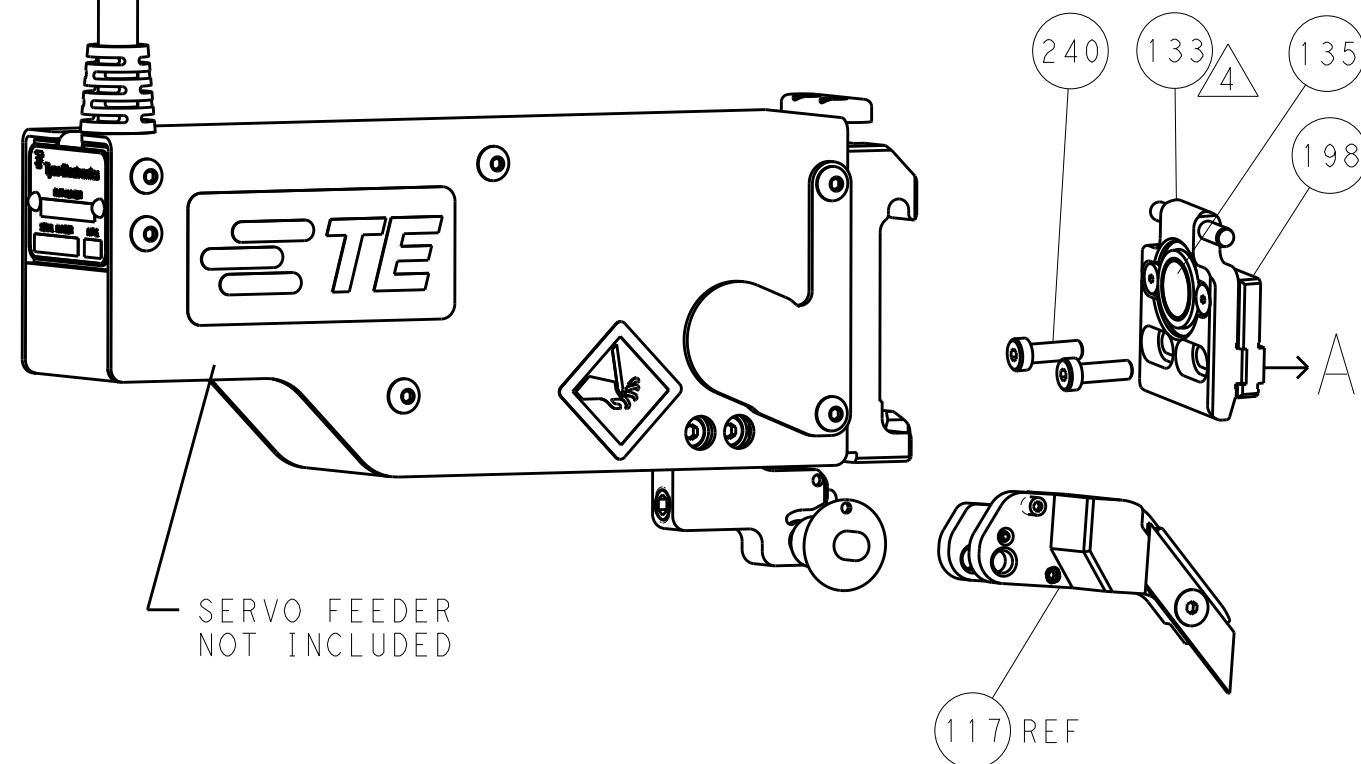
FEED TYPE
MECHANICAL



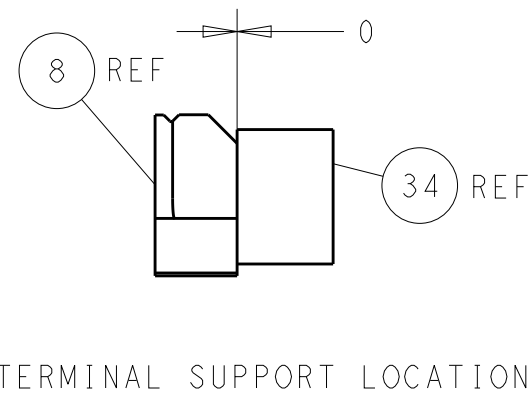
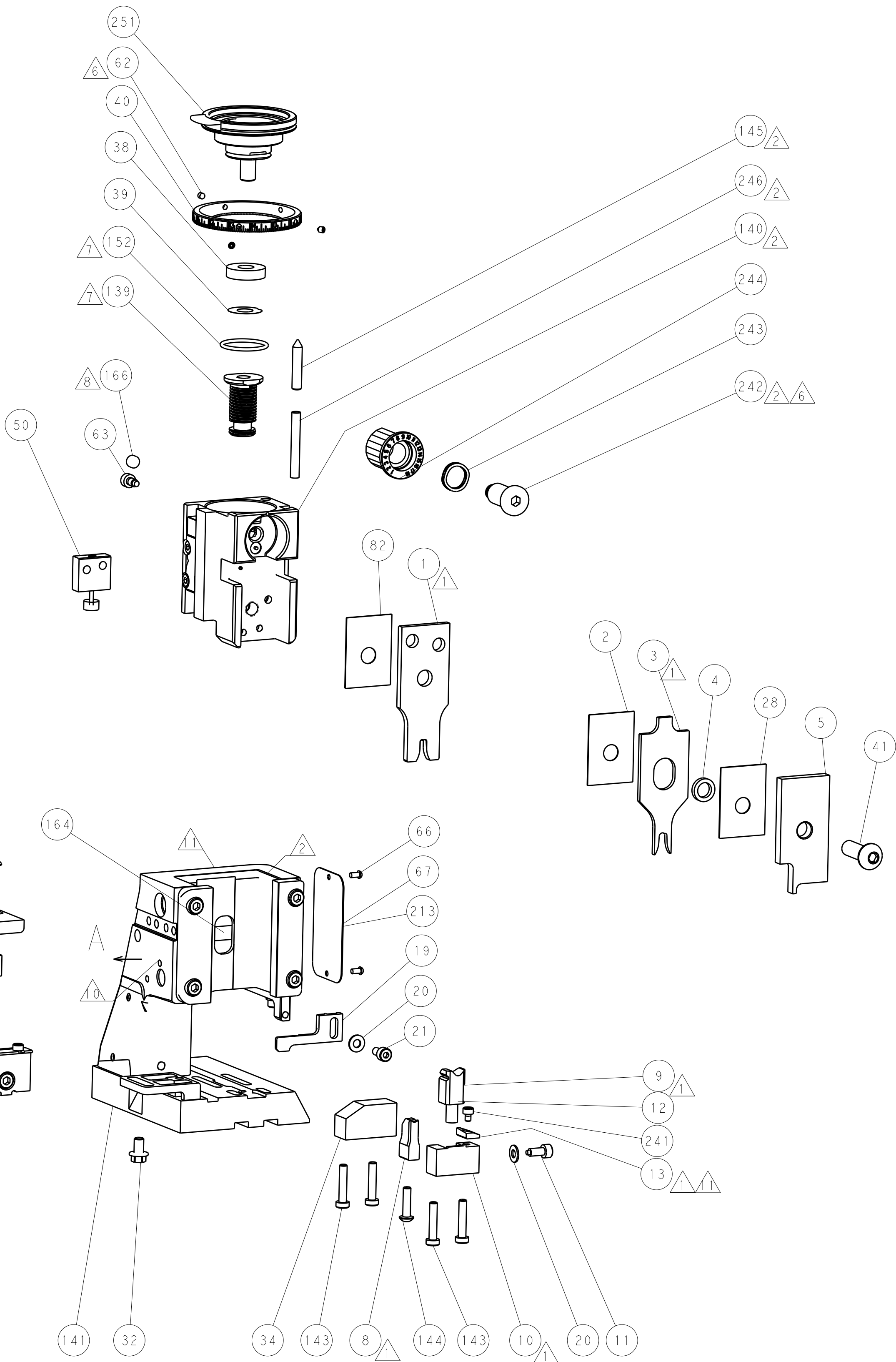
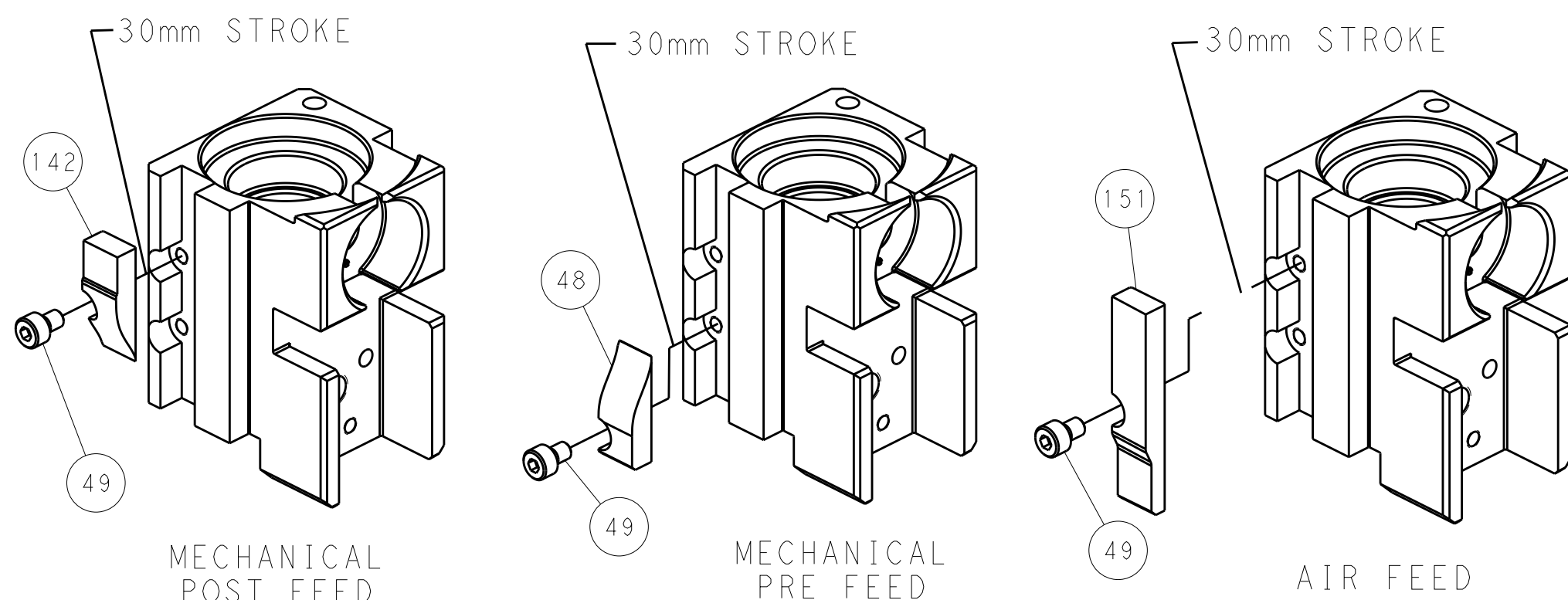
PNEUMATIC



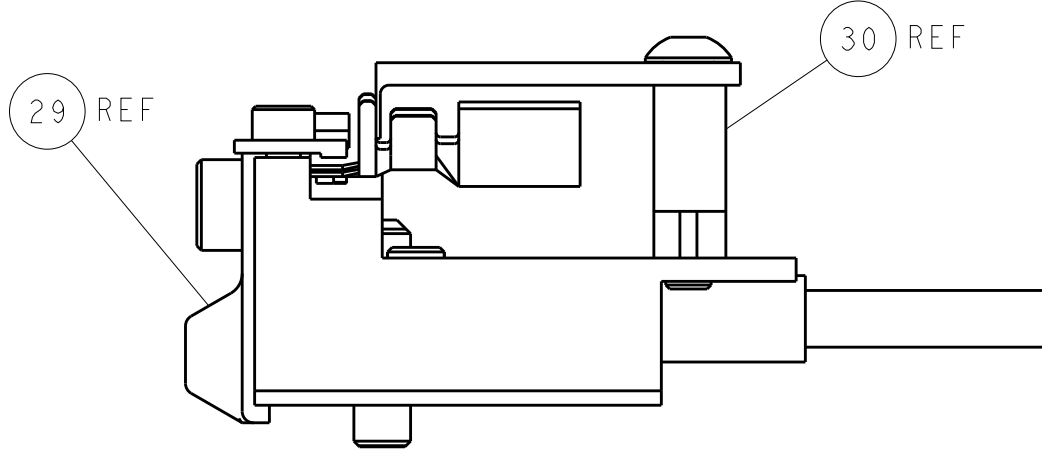
SERVO
LATCH PLATE



CAM POSITIONS



ITEM 30 LOCATED AT
FRONT HOLES



FEED TRACK POSITION
GUIDE BY INSULATION BARREL

PACIFIC VERSION
Shown on sheets 3 of 4 & 4 of 4
(Atlantic version shown on sheets 1 of 4 & 2 of 4)

DIMENSIONS: mm		TOLERANCES UNLESS OTHERWISE SPECIFIED:		DWN F. ZHANG 02AUG2017		CHK K. ZHANG 02AUG2017		APVD K. ZHANG 02AUG2017		NAME Ocean Side Feed Applicator	
0 PLC ±		1 PLC ±		2 PLC ±		3 PLC ±		4 PLC ±		RESTRICTED TO	
MATERIAL		FINISH		WEIGHT		SIZE		CAGE CODE		DRAWING NO	
-		-		-		A1		00779		C=2836864	
Customer Accessible Production Drawing		SCALE		1:2		SHEET		4		REV	
										A	