

| PART NUMBER | REVISION | DESCRIPTION                      | FEED TYPE  |
|-------------|----------|----------------------------------|------------|
| 2836789-1   | B        | FINE CRIMP HEIGHT ADJUST         | MECHANICAL |
| 2836789-2   | C        | FINE CRIMP HEIGHT ADJUST         | PNEUMATIC  |
| 7-2836789-1 | B        | MECHANICAL AND CRIMP TOOLING KIT | MECHANICAL |
| 7-2836789-2 | C        | PNEUMATIC AND CRIMP TOOLING KIT  | PNEUMATIC  |
| 7-2836789-7 | A        | CRIMP TOOLING KIT                | -          |

ATLANTIC VERSION TERMINATOR INTERFACE ADAPTER



| APPLICATOR DATA |                |      |
|-----------------|----------------|------|
| CRIMP           | SIZE           | TYPE |
| WIRE            | 2.79 mm [1.10] | F    |
| INSUL           | 5.08 mm [2.00] | O    |

APPLICATOR INSTRUCTIONS  
408-35042

| TERMINAL DATA: TE TERMINAL         |           | TE CRIMP SPECIFICATION    |   |
|------------------------------------|-----------|---------------------------|---|
| TERMINAL NAME: AMP MCP 2.8 CONTACT |           |                           |   |
| WIRE STRIP LENGTH                  |           | INSULATION DIAMETER RANGE |   |
| 5.22-5.98 mm [2.06-.235 IN]        |           | Ø                         |   |
| TERMINAL APPLICATION SPECIFICATION | 114-18148 | -                         | - |

| TERMINALS APPLIED |             |         |          |                |
|-------------------|-------------|---------|----------|----------------|
| TE TERMINAL       | TE TERMINAL | TE SEAL | TE SEAL  | CABLE DIAMETER |
| 1-1719506-1       | 1-1719506-3 |         | 828905-1 | Ø2.2-3.0mm     |
|                   |             |         | 282536-1 | Ø2.7-3.0mm     |

| WIRE SIZE                     | CRIMP HEIGHT mm [INCH]         | CRIMP HEIGHT REFERENCE SETTING |
|-------------------------------|--------------------------------|--------------------------------|
| 12 AWG OR 3.00mm <sup>2</sup> | 2.00 +/- 0.05 [1.079 +/- .002] | 7.4                            |
| 3.00mm <sup>2</sup>           | 1.92 +/- 0.05 [1.076 +/- .002] | 8.2                            |

- 1. RECOMMENDED SPARE PARTS
- 2. REFER TO SUPPLIED INSTRUCTION SHEET FOR CLEANING, LUBRICATION AND STORAGE OF APPLICATOR.
- 3. APPLY PART NUMBER 2-23419-6 LOCTITE TO THREADS OF ITEM 242.
- 4. CRIMP HEIGHT REFERENCE SETTING WAS THE SETTING USED WHEN THE APPLICATOR WAS QUALIFIED AT THE FACTORY. ADJUSTMENT MAY BE NECESSARY WHEN RUNNING APPLICATOR IN THE FIELD.
- 5. APPLY TORQ-SEAL IN ALLEN SOCKET TO FILL HOLE AFTER FLAT HD HAS BEEN ADJUSTED TO CORRECT HEIGHT AT QUALIFICATION. APPLY #1-23419-5 LOC-TITE TO THREADS.
- 6. UNLESS SPECIFIED OTHERWISE TORQUE VALUES SHALL BE USED PER DOCUMENT, 101-35000.

**\*WARNING**  
ON INSTALLATION, SET WIRE DISC TO CRIMP HEIGHT REFERENCE SETTING FOR LARGEST WIRE SIZE. CRIMP HEIGHT REFERENCE SETTINGS GREATER THAN THE VALUE SHOWN MAY CAUSE DAMAGE TO THE CRIMP TOOLING, REFER TO THE INSTRUCTION SHEET FOR PROPER SETUP AND ADJUSTMENTS.

**ATLANTIC VERSION**  
Shown on sheets 1 of 4 & 2 of 4  
(Pacific version shown on sheets 3 of 4 & 4 of 4)

| LOC |    | DIST |     | REVISIONS     |           |     |      |
|-----|----|------|-----|---------------|-----------|-----|------|
| A   | 66 | P    | LTN | DESCRIPTION   | DATE      | OWN | APVD |
|     |    | A1   |     | ECR-17-012312 | 23AUG2017 | RS  | LZ   |
|     |    | B    |     | ECR-18-010620 | 06JUL2018 | VLA | CT   |
|     |    | C    |     | ECR-21-003089 | 11MAR2021 | FJ  | TE   |
|     |    | C1   |     | ECR-22-159211 | 23NOV2022 | FZ  | GB   |

|   |     |     |     |     |             |                                     |                               |   |
|---|-----|-----|-----|-----|-------------|-------------------------------------|-------------------------------|---|
| - | 1   | -   | 1   | -   | 2119641-1   | FEED CAM, AIR FEED                  | 248                           |   |
| - | 1   | 1   | 1   | 1   | 2119082-4   | CAM, SNAIL, INSULATION ADJUSTMENT   | 244                           |   |
| - | 1   | 1   | 1   | 1   | 2079764-1   | WASHER, WAVE SPRING, CREST-TO-CREST | 243                           |   |
| - | 1   | 1   | 1   | 1   | 2119083-1   | RETAINER, INSULATION DIAL           | 242                           |   |
| - | 1   | 1   | 1   | 1   | 7-18023-7   | SCR, SKT HD CAP M3 X 4.0            | 241                           |   |
| - | -   | 1   | -   | 1   | 2119580-1   | MECHANICAL FEED ASSEMBLY            | 239                           |   |
| - | 1   | -   | 1   | -   | 2844940-1   | AIR FEED MODULE                     | 238                           |   |
| - | REF | REF | REF | REF | 994970-2    | COUNTER, MAGNETIC                   | 164                           |   |
| - | 1   | 1   | 1   | 1   | 2844908-1   | SCREW, LOCKING                      | 99                            |   |
| - | 1   | 1   | 1   | 1   | 2844907-1   | POST, LOCKING                       | 98                            |   |
| - | 1   | 1   | 1   | 1   | 455888-4    | SPACER, CRIMPER                     | 82                            |   |
| - | 1   | 1   | 1   | 1   | 1803607-3   | DOCUMENTATION PACKAGE               | 71                            |   |
| - | 1   | 1   | 1   | 1   | 2119791-9   | DEPRESSOR, WIRE                     | 70                            |   |
| - | 1   | 1   | 1   | 1   | 2119740-1   | TAG, IDENTIFICATION                 | 67                            |   |
| - | 2   | 2   | 2   | 2   | 2168078-1   | SCREW, DRIVE, RH, RoHS, 2 x .188    | 66                            |   |
| - | 1   | 1   | 1   | 1   | 2168083-2   | SCR, SKT HD CAP, RoHS, M4 X 8.0     | 60                            |   |
| - | 1   | 1   | 1   | 1   | 5-18022-5   | SCR, HEX HD CAP, M4 X 6.0           | 59                            |   |
| - | 1   | 1   | 1   | 1   | 985575-3    | SCR, FLT SKT HD CAP M3 X 10.0       | 57                            |   |
| - | 1   | 1   | 1   | 1   | 1338683-8   | FEED PAWL                           | 56                            |   |
| - | 4   | 4   | 4   | 4   | 2168083-3   | SCR, SKT HD CAP, RoHS, M4 X 12.0    | 54                            |   |
| - | 2   | 2   | 2   | 2   | 2168083-8   | SCR, SKT HD CAP, RoHS, M4 X 16      | 53                            |   |
| - | 1   | 1   | 1   | 1   | 5018030-1   | NUT, HEX, REG, RoHS, M3             | 52                            |   |
| - | 1   | 1   | 1   | 1   | 811242-5    | BUMPER, HOLD DOWN                   | 51                            |   |
| - | 1   | 1   | 1   | 1   | 690753-2    | SPACER, TONKER                      | 50                            |   |
| - | 1   | 2   | 1   | 2   | 18023-9     | SCR, SKT HD CAP M4 X 6.0            | 49                            |   |
| - | -   | 1   | -   | 1   | 2119652-1   | FEED CAM, PRE FEED                  | 48                            |   |
| - | -   | 1   | -   | 1   | 2119653-1   | FEED CAM, POST FEED                 | 47                            |   |
| - | 1   | 1   | 1   | 1   | 1803583-9   | APPLICATOR BASIC ASSEMBLY, SF       | 46                            |   |
| - | 1   | 1   | 1   | 1   | 1803515-1   | RAM ASSEMBLY, SF ATLANTIC           | 44                            |   |
| - | 1   | 1   | 1   | 1   | 1803602-1   | SCR, BHSC, RoHS (M8 X 25)           | 41                            |   |
| - | 1   | 1   | 1   | 1   | 1-1752356-7 | SUPPORT, TERMINAL                   | 34                            |   |
| - | 2   | 2   | 2   | 2   | 2079383-5   | SCR, BHSC, RoHS (M4 X 20)           | 33                            |   |
| - | 2   | 2   | 2   | 2   | 3-2844962-0 | SPACER, CYLINDRICAL, STRIP GUIDE    | 30                            |   |
| - | 1   | 1   | 1   | 1   | 2844992-1   | ASSEMBLY, STRIP GUIDE               | 29                            |   |
| - | 1   | 1   | 1   | 1   | 455888-5    | SPACER, CRIMPER                     | 28                            |   |
| - | 1   | 1   | 1   | 1   | 1320928-2   | STRIP GUIDE                         | 24                            |   |
| - | 1   | 1   | 1   | 1   | 2168083-2   | SCR, SKT HD CAP, RoHS, M4 X 8.0     | 21                            |   |
| - | 2   | 2   | 2   | 2   | 1-18028-2   | WASHER, FLAT, REG M4                | 20                            |   |
| - | 1   | 1   | 1   | 1   | 2119533-1   | STRIPPER, SIDE FEED                 | 19                            |   |
| - | 1   | 1   | 1   | 1   | 2119806-1   | INSERT, SHEAR                       | 13                            |   |
| - | 1   | 1   | 1   | 1   | 3-22280-3   | SPRING, COMPRESSION                 | 12                            |   |
| - | 1   | 1   | 1   | 1   | 1-356885-4  | STOP, SHEAR                         | 11                            |   |
| - | 1   | 1   | 1   | 1   | 2119805-1   | SHEAR HOLDER, FRONT                 | 10                            |   |
| - | 1   | 1   | 1   | 1   | 1803095-1   | FLOATING SHEAR, FRONT               | 9                             |   |
| - | 1   | 2   | 2   | 1   | 1           | 3-1633923-8                         | ANVIL, COMBINATION            | 8 |
| - | 1   | 1   | 1   | 1   | 240641-5    | SPACER                              | 7                             |   |
| - | -   | -   | -   | -   | -           | -                                   | 6                             |   |
| - | 1   | 1   | 1   | 1   | 2-2119781-4 | DEPRESSOR, SHEAR                    | 5                             |   |
| - | 1   | 1   | 1   | 1   | 238011-4    | BLOCK, CRIMPER SPACER               | 4                             |   |
| - | 1   | 2   | 2   | 1   | 1           | 3-2119784-4                         | CRIMPER, INSULATION O PREMIUM | 3 |
| - | 1   | 1   | 1   | 1   | 455888-5    | SPACER, CRIMPER                     | 2                             |   |
| - | 1   | 2   | 2   | 1   | 1           | 2-456408-0                          | CRIMPER, WIRE PREMIUM         | 1 |
| - | 77  | -72 | -71 | -2  | -1          | PART NO                             | ITEM NO                       |   |

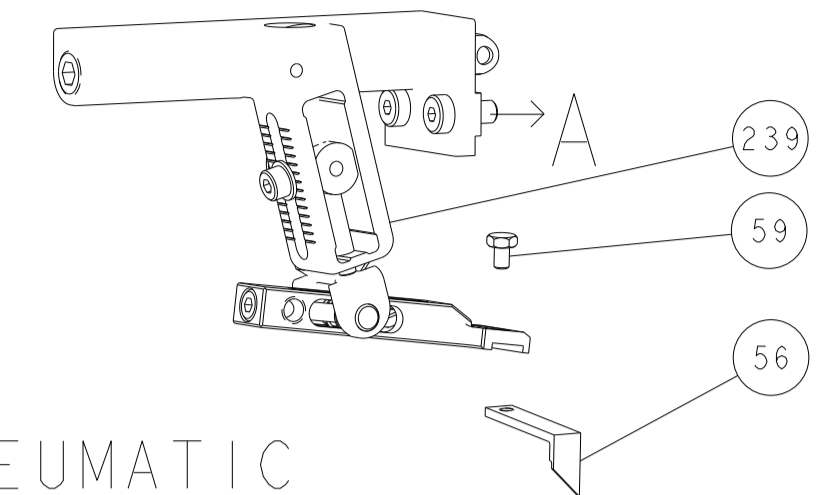
| DIMENSIONS: |        | TOLERANCES UNLESS OTHERWISE SPECIFIED: |  | MATERIAL: |  | FINISH: |  |
|-------------|--------|--|--|-----------|--|---------|--|
| mm          | 0 PLC  | ±                                      |  |           |  |         |  |
|             | 1 PLC  | ±                                      |  |           |  |         |  |
|             | 2 PLC  | ±                                      |  |           |  |         |  |
|             | 3 PLC  | ±                                      |  |           |  |         |  |
|             | 4 PLC  | ±                                      |  |           |  |         |  |
|             | ANGLES | ±                                      |  |           |  |         |  |

|                  |           |            |         |
|------------------|-----------|------------|---------|
| OWN              | D. WEAVER | 15MAY2017  |         |
| CHK              | T. ELBIN  | 15MAY2017  |         |
| APVD             | T. ELBIN  | 15MAY2017  |         |
| PRODUCT SPEC     |           |            |         |
| APPLICATION SPEC |           |            |         |
| SIZE             | A1        | CAGE CODE  | 00779   |
| DRAWING NO       |           | DRAWING NO | 2836789 |
| RESTRICTED TO    |           | SCALE      | 1:2     |
|                  |           | SHEET      | 1 OF 4  |
|                  |           | REV        | C1      |

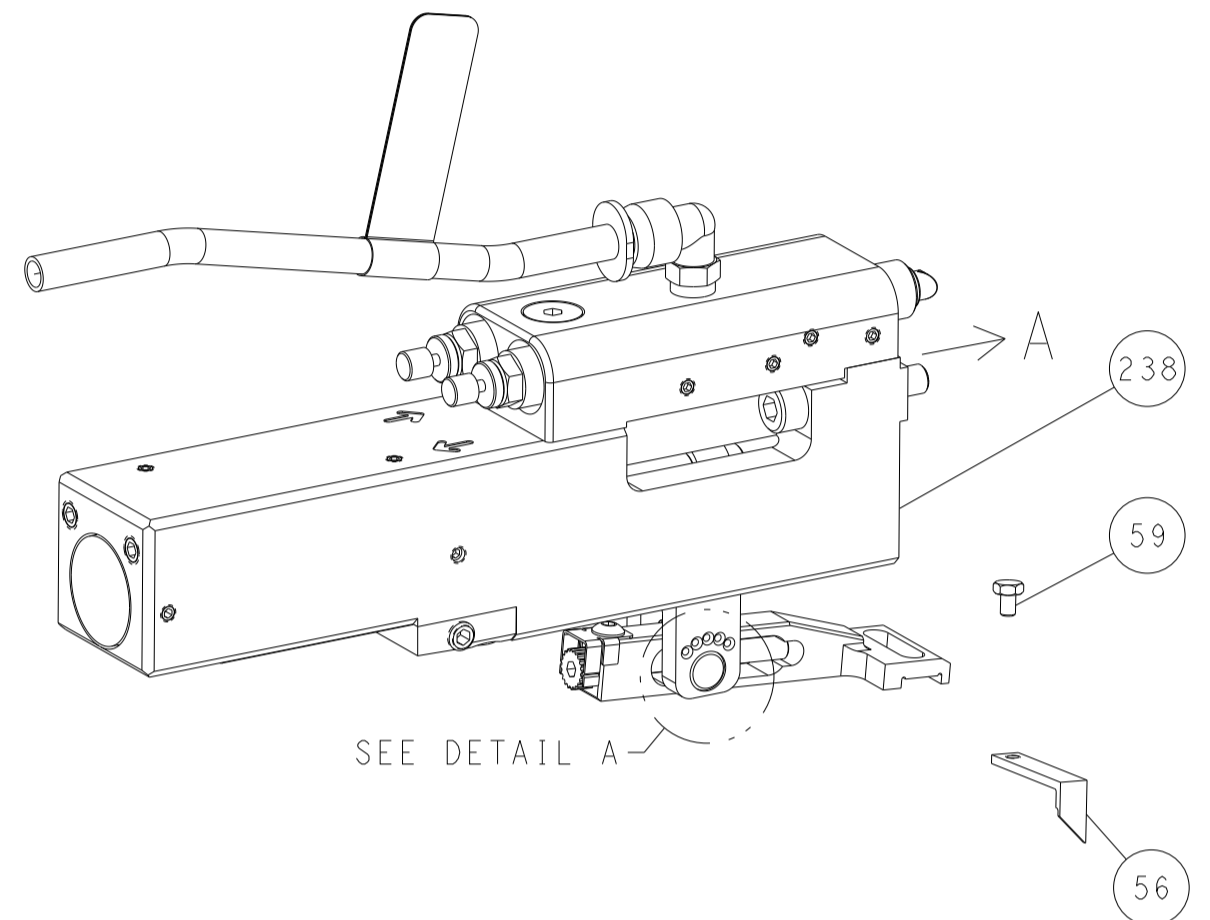
Customer Accessible Production Drawing

| LOC | DIST | REVISIONS |     |             |      |     |      |
|-----|------|-----------|-----|-------------|------|-----|------|
| A   | 66   | P         | LTN | DESCRIPTION | DATE | OWN | APVD |
|     |      | -         |     | SEE SHEET 1 | -    | -   | -    |

# FEED TYPE MECHANICAL



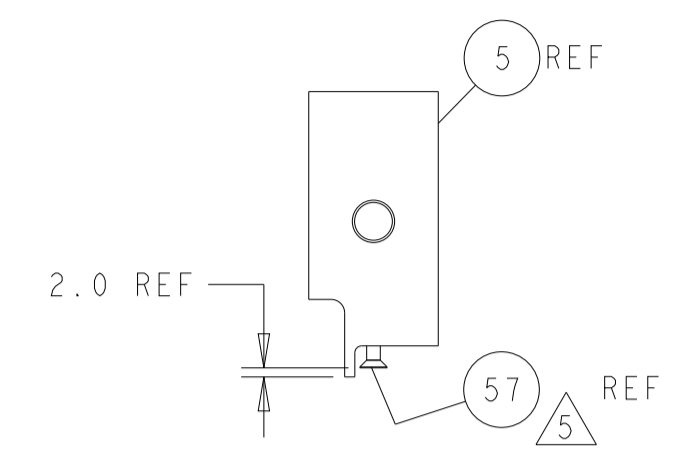
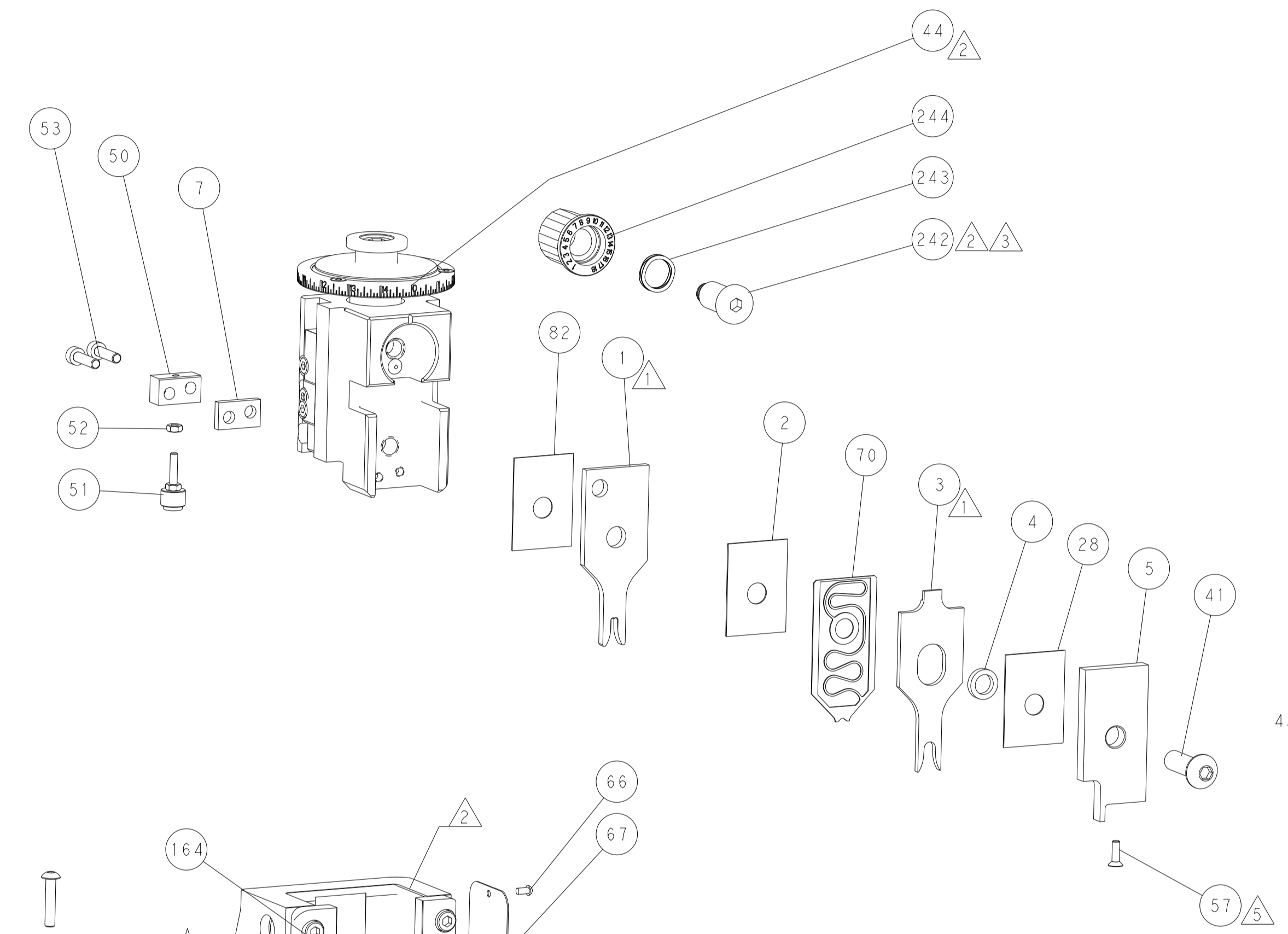
## PNEUMATIC



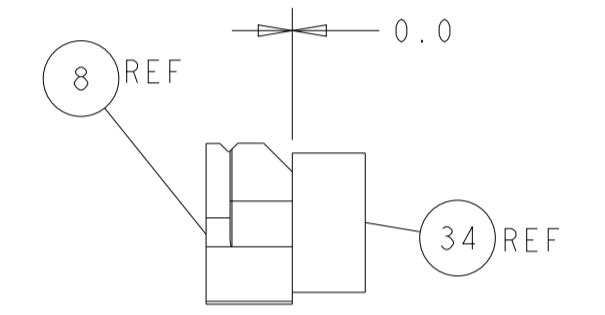
## FEED SPRING SETTING POSITION (SHOWN FROM REAR SIDE)



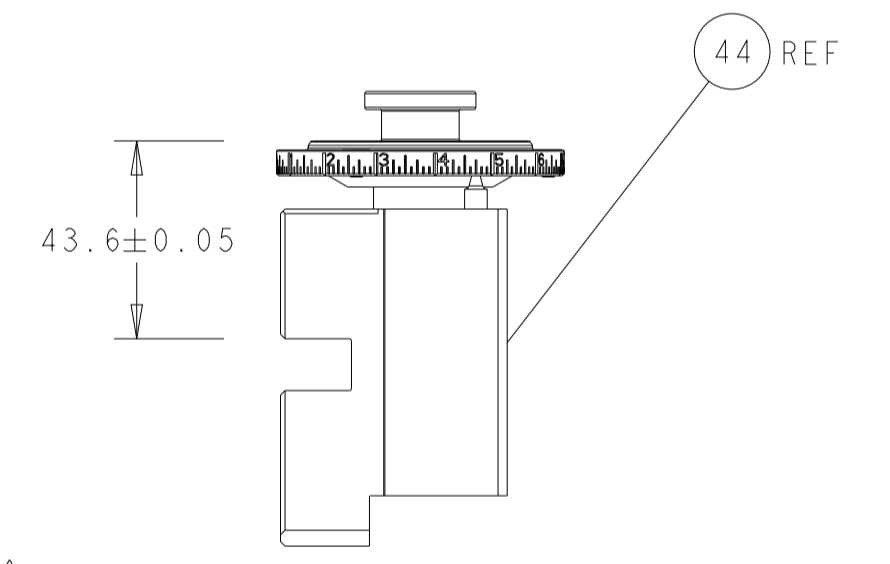
DETAIL A



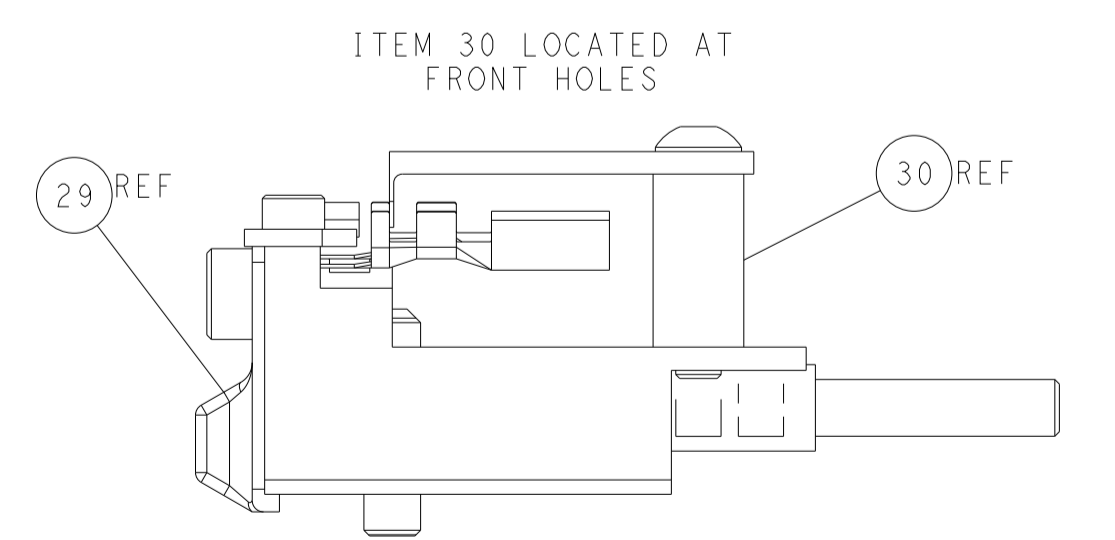
SHEAR DEPRESSOR DETAIL



TERMINAL SUPPORT LOCATION

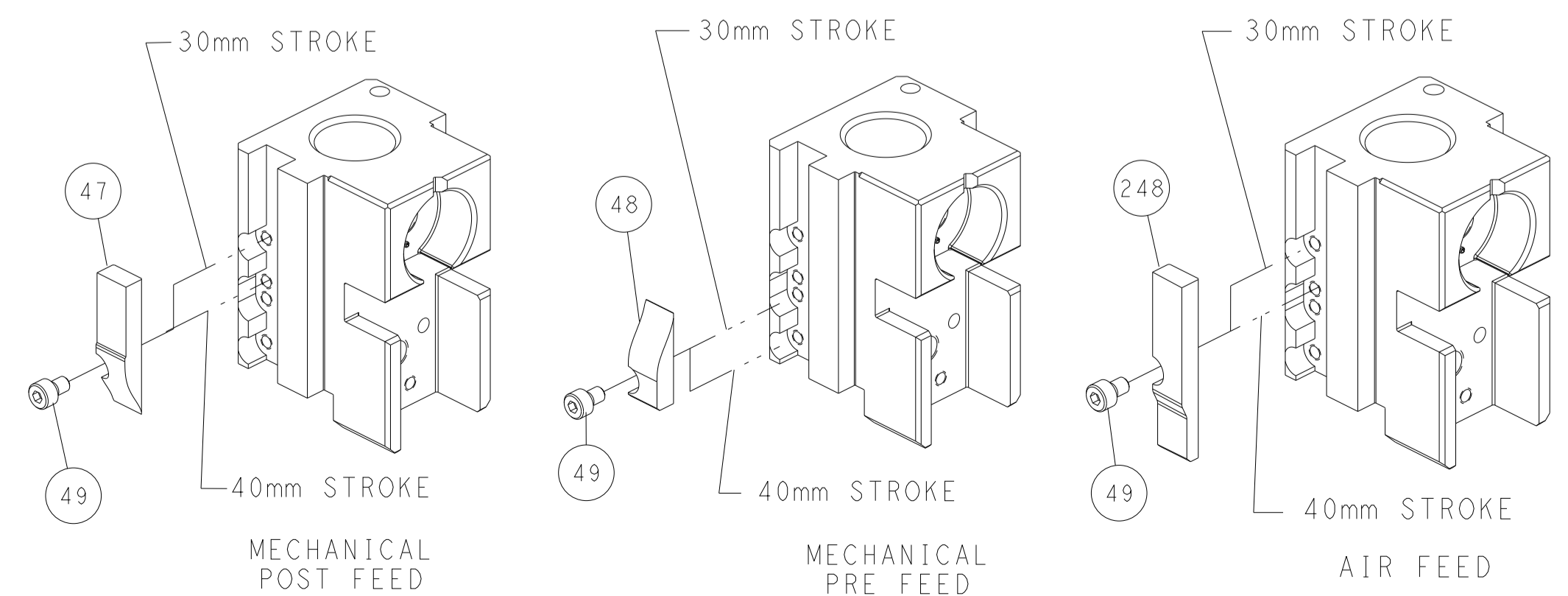


RAM SET-UP



FEED TRACK POSITION GUIDE BY INSULATION BARREL

# CAM POSITIONS



**ATLANTIC VERSION**  
 Shown on sheets 1 of 4 & 2 of 4  
 (Pacific version shown on sheets 3 of 4 & 4 of 4)

|   |   |  |                                    |
|---|---|--|------------------------------------|
| <small>THIS DRAWING IS UNPUBLISHED. RELEASED FOR PUBLICATION 2017 BY TYCO ELECTRONICS CORPORATION. ALL RIGHTS RESERVED.</small> |   | DWN B. WEAVER 15MAY2017<br>CHK T. ELBIN 15MAY2017<br>APVD T. ELBIN 15MAY2017 | NAME<br>Ocean Side Feed Applicator |
| DIMENSIONS:<br>mm   | TOLERANCES UNLESS OTHERWISE SPECIFIED:<br>0 PLC ±<br>1 PLC ±<br>2 PLC ±<br>3 PLC ±<br>4 PLC ±<br>ANGLES ±<br>FINISH | SIZE CAGE CODE DRAWING NO<br>A1 00779 C=2836789                              | RESTRICTED TO<br>-                 |
| MATERIAL:   |   | WEIGHT:  | SCALE 1:2 SHEET 2 OF 4 REV C1      |

| PART NUMBER | REVISION | DESCRIPTION              | FEED TYPE  |
|-------------|----------|--------------------------|------------|
| 2-2836789-1 | B        | FINE CRIMP HEIGHT ADJUST | MECHANICAL |
| 2-2836789-2 | C        | FINE CRIMP HEIGHT ADJUST | PNEUMATIC  |
| 7-2836789-7 | A        | CRIMP TOOLING KIT        | -          |

| APPLICATOR DATA |                |      |
|-----------------|----------------|------|
| CRIMP           | SIZE           | TYPE |
| WIRE            | 2.79 mm [.110] | F    |
| INSUL           | 5.08 mm [.200] | O    |

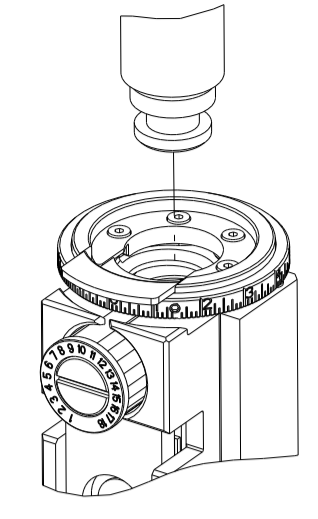
APPLICATOR INSTRUCTIONS  
408-35042

| TERMINAL DATA: TE TERMINAL                       |           | TE CRIMP SPECIFICATION         |
|--|-----------|--------------------------------|
| TERMINAL NAME: AMP MCP 2.8 CONTACT               |           |                                |
| WIRE STRIP LENGTH<br>5.22-5.98 mm [.206-.235 IN] |           | INSULATION DIAMETER RANGE<br>Ø |
| TERMINAL APPLICATION SPECIFICATION               | 114-18148 | -                              |

| TE TERMINAL | TE TERMINAL | TE SEAL | TE SEAL  | CABLE DIAMETER |
|-------------|-------------|---------|----------|----------------|
| 1-1719506-1 | 1-1719506-3 |         | 828905-1 | Ø 2.2-3.0mm    |
|             |             |         | 282536-1 | Ø 2.7-3.0mm    |

| WIRE SIZE                     | CRIMP HEIGHT mm [INCH]     | CRIMP HEIGHT REFERENCE SETTING |
|-------------------------------|----------------------------|--------------------------------|
| 12 AWG OR 3.00mm <sup>2</sup> | 2.00+/-0.05 [.079+/- .002] | 7.4                            |
| 3.00mm <sup>2</sup>           | 1.92+/-0.05 [.076+/- .002] | 8.2                            |

PACIFIC VERSION TERMINATOR INTERFACE ADAPTER



| LOC | DIST | REVISIONS |     |             |      |     |      |
|-----|------|-----------|-----|-------------|------|-----|------|
| A   | 66   | P         | LTN | DESCRIPTION | DATE | OWN | APVD |
| -   | -    | -         | -   | SEE SHEET 1 | -    | -   | -    |

|   |     |     |             |                                     |     |
|---|-----|-----|-------------|-------------------------------------|-----|
| - | 1   | 1   | 2119082-4   | CAM, SNAIL, INSULATION ADJUSTMENT   | 244 |
| - | 1   | 1   | 2079764-1   | WASHER, WAVE SPRING, CREST-TO-CREST | 243 |
| - | 1   | 1   | 2119083-1   | RETAINER, INSULATION DIAL           | 242 |
| - | 1   | 1   | 7-18023-7   | SCR, SKT HD CAP M3 X 4.0            | 241 |
| - | -   | 1   | 2119580-1   | MECHANICAL FEED ASSEMBLY            | 239 |
| - | 1   | -   | 2844940-1   | AIR FEED MODULE                     | 238 |
| - | REF | REF | 994970-2    | COUNTER, MAGNETIC                   | 164 |
| - | 1   | -   | 2119641-2   | FEED CAM, AIR FEED                  | 151 |
| - | 1   | 1   | 2168083-8   | SCR, SKT HD CAP, RoHS, M4 X 16      | 144 |
| - | 4   | 4   | 2168083-9   | SCR, SKT HD CAP, RoHS, M4 X 20      | 143 |
| - | -   | 1   | 2119653-2   | FEED CAM, POST FEED                 | 142 |
| - | 1   | 1   | 1-1803583-0 | APPLICATOR BASIC ASSEMBLY, SF       | 141 |
| - | 1   | 1   | 1803516-1   | RAM ASSEMBLY, SF PACIFIC            | 140 |
| - | 1   | 1   | 2844908-1   | SCREW, LOCKING                      | 99  |
| - | 1   | 1   | 2844907-1   | POST, LOCKING                       | 98  |
| - | 1   | 1   | 455888-4    | SPACER, CRIMPER                     | 82  |
| - | 1   | 1   | 1803607-3   | DOCUMENTATION PACKAGE               | 71  |
| - | 1   | 1   | 2119791-9   | DEPRESSOR, WIRE                     | 70  |
| - | 1   | 1   | 2119740-1   | TAG IDENTIFICATION                  | 67  |
| - | 2   | 2   | 2168078-1   | SCREW, DRIVE, RH, RoHS, 2 x .188    | 66  |
| - | 1   | 1   | 5-18022-5   | SCR, HEX HD CAP, M4 X 6.0           | 59  |
| - | 1   | 1   | 985575-3    | SCR, FLT SKT HD CAP M3 X 10.0       | 57  |
| - | 1   | 1   | 1338683-8   | FEED PAWL                           | 56  |
| - | 2   | 2   | 2168083-8   | SCR, SKT HD CAP, RoHS, M4 X 16      | 53  |
| - | 1   | 1   | 5018030-1   | NUT, HEX, REG, RoHS, M3             | 52  |
| - | 1   | 1   | 811242-5    | BUMPER, HOLD DOWN                   | 51  |
| - | 1   | 1   | 690753-2    | SPACER, TONKER                      | 50  |
| - | 1   | 2   | 18023-9     | SCR, SKT HD CAP M4 X 6.0            | 49  |
| - | -   | 1   | 2119652-1   | FEED CAM, PRE FEED                  | 48  |
| - | 1   | 1   | 1803602-1   | SCR, BHSC, RoHS (M8 X 25)           | 41  |
| - | 1   | 1   | 1-1752356-7 | SUPPORT, TERMINAL                   | 34  |
| - | 2   | 2   | 2079383-5   | SCR, BHSC, RoHS (M4 X 20)           | 33  |
| - | 2   | 2   | 3-2844962-0 | SPACER, CYLINDRICAL, STRIP GUIDE    | 30  |
| - | 1   | 1   | 2844992-1   | ASSEMBLY, STRIP GUIDE               | 29  |
| - | 1   | 1   | 455888-5    | SPACER, CRIMPER                     | 28  |
| - | 1   | 1   | 1320928-2   | STRIP GUIDE                         | 24  |
| - | 1   | 1   | 2168083-2   | SCR, SKT HD CAP, RoHS, M4 X 8.0     | 21  |
| - | 2   | 2   | 1-18028-2   | WASHER, FLAT, REG M4                | 20  |
| - | 1   | 1   | 2119533-1   | STRIPPER, SIDE FEED                 | 19  |
| - | 1   | 1   | 2119806-1   | INSERT, SHEAR                       | 13  |
| - | 1   | 1   | 3-22280-3   | SPRING, COMPRESSION                 | 12  |
| - | 1   | 1   | 1-356885-4  | STOP, SHEAR                         | 11  |
| - | 1   | 1   | 2119805-1   | SHEAR HOLDER, FRONT                 | 10  |
| - | 1   | 1   | 1803095-1   | FLOATING SHEAR, FRONT               | 9   |
| - | 1   | 1   | 3-1633923-8 | ANVIL, COMBINATION                  | 8   |
| - | 1   | 1   | 240641-5    | SPACER                              | 7   |
| - | -   | -   | -           | -                                   | 6   |
| - | 1   | 1   | 2-2119781-4 | DEPRESSOR, SHEAR                    | 5   |
| - | 1   | 1   | 238011-4    | BLOCK, CRIMPER SPACER               | 4   |
| - | 1   | 1   | 3-2119784-4 | CRIMPER, INSULATION O PREMIUM       | 3   |
| - | 1   | 1   | 455888-5    | SPACER, CRIMPER                     | 2   |
| - | 1   | 1   | 2-456408-0  | CRIMPER, WIRE PREMIUM               | 1   |

1. RECOMMENDED SPARE PARTS
2. REFER TO SUPPLIED INSTRUCTION SHEET FOR CLEANING, LUBRICATION AND STORAGE OF APPLICATOR.
3. APPLY PART NUMBER 2-23419-6 LOCTITE TO THREADS OF ITEM 242.
4. CRIMP HEIGHT REFERENCE SETTING WAS THE SETTING USED WHEN THE APPLICATOR WAS QUALIFIED AT THE FACTORY. ADJUSTMENT MAY BE NECESSARY WHEN RUNNING APPLICATOR IN THE FIELD.
5. APPLY TORO-SEAL IN ALLEN SOCKET TO FILL HOLE AFTER FLAT HD HAS BEEN ADJUSTED TO CORRECT HEIGHT AT QUALIFICATION. APPLY #1-23419-5 LOC-TITE TO THREADS.
6. UNLESS SPECIFIED OTHERWISE TORQUE VALUES SHALL BE USED PER DOCUMENT, 101-35000.

**\*WARNING**  
ON INSTALLATION, SET WIRE DISC TO CRIMP HEIGHT REFERENCE SETTING FOR LARGEST WIRE SIZE. CRIMP HEIGHT REFERENCE SETTINGS GREATER THAN THE VALUE SHOWN MAY CAUSE DAMAGE TO THE CRIMP TOOLING, REFER TO THE INSTRUCTION SHEET FOR PROPER SETUP AND ADJUSTMENTS.

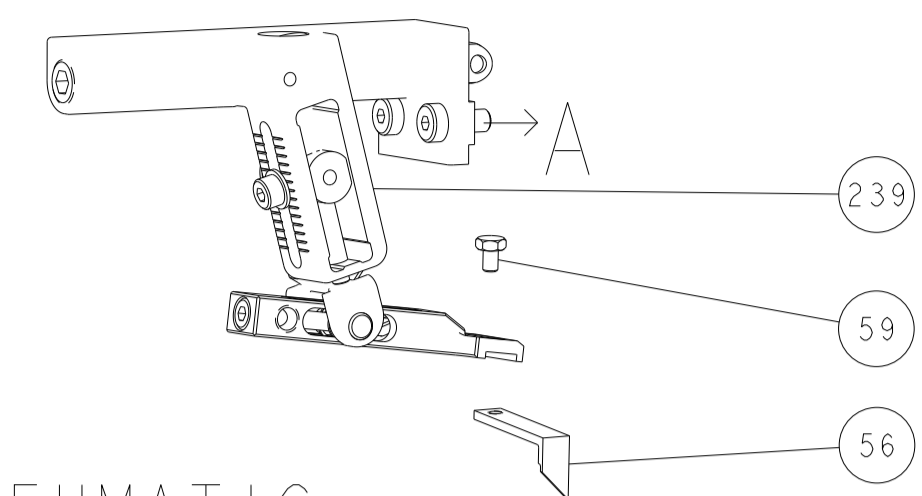
PACIFIC VERSION  
Shown on sheets 3 of 4 & 4 of 4  
(Atlantic version shown on sheets 1 of 4 & 2 of 4)

|                |  |  |  |                          |  |                         |  |                          |  |                                  |  |
|----------------|--|--|--|--------------------------|--|-------------------------|--|--------------------------|--|----------------------------------|--|
| DIMENSIONS: mm |  | TOLERANCES UNLESS OTHERWISE SPECIFIED: |  | DWG: B. WEAVER 15MAY2017 |  | CHK: T. ELBIN 15MAY2017 |  | APVD: T. ELBIN 15MAY2017 |  | NAME: Ocean Side Feed Applicator |  |
| 0 PLC ±        |  | 1 PLC ±                                |  | 2 PLC ±                  |  | 3 PLC ±                 |  | 4 PLC ±                  |  | RESTRICTED TO                    |  |
| MATERIAL: -    |  | FINISH: -                              |  | WEIGHT: -                |  | SCALE: 1:2              |  | SHEET 3 OF 4             |  | REV: C1                          |  |

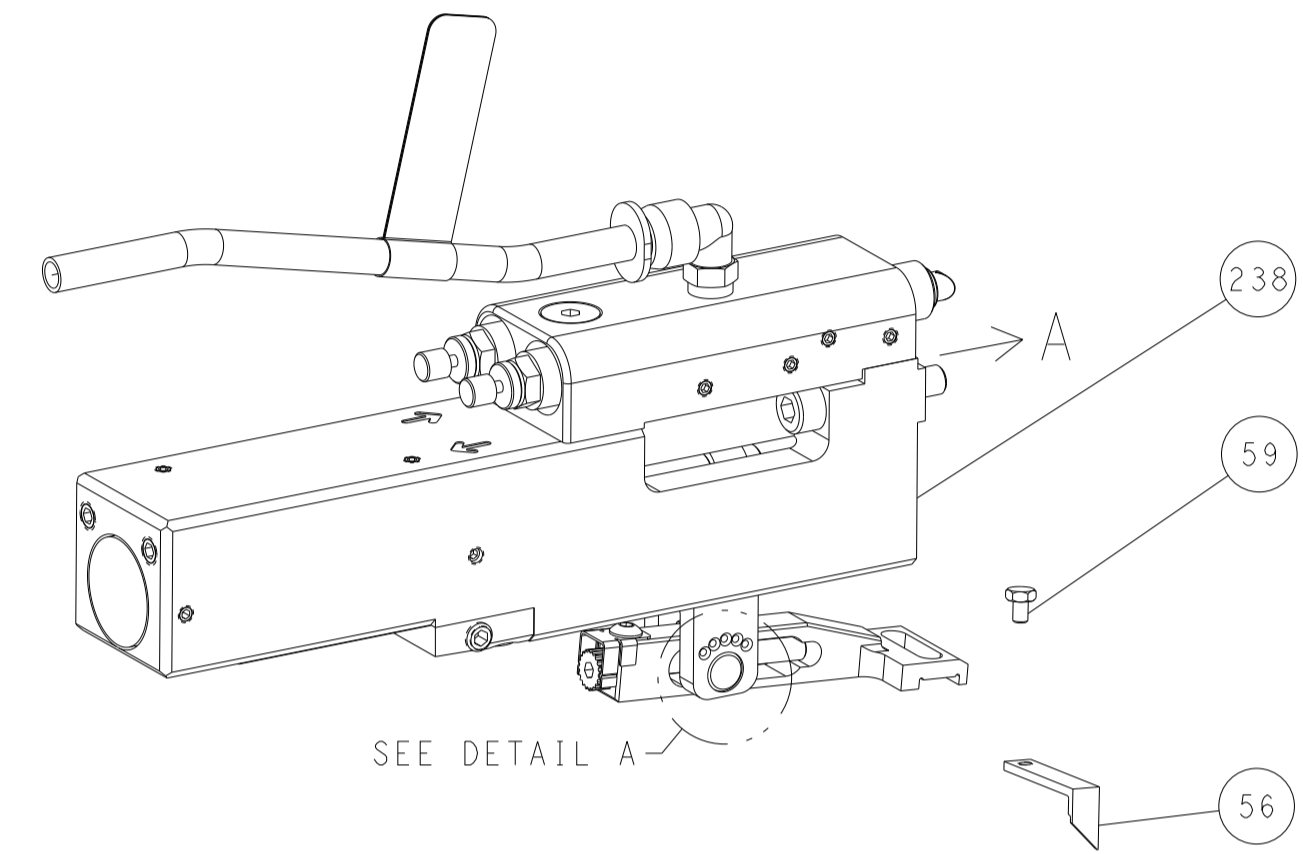
Customer Accessible Production Drawing

| LOC | DIST | REVISIONS |     |             |      |     |      |
|-----|------|-----------|-----|-------------|------|-----|------|
|     |      | P         | LTN | DESCRIPTION | DATE | OWN | APVD |
| A   | 66   | -         | -   | SEE SHEET 1 | -    | -   | -    |

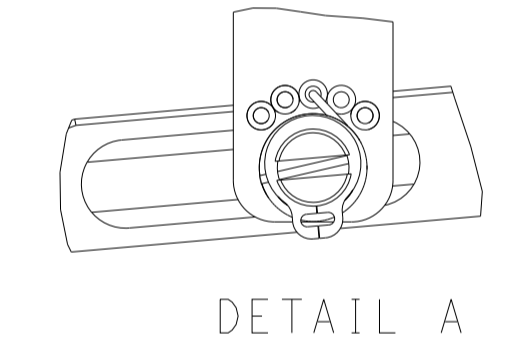
# FEED TYPE MECHANICAL



# PNEUMATIC

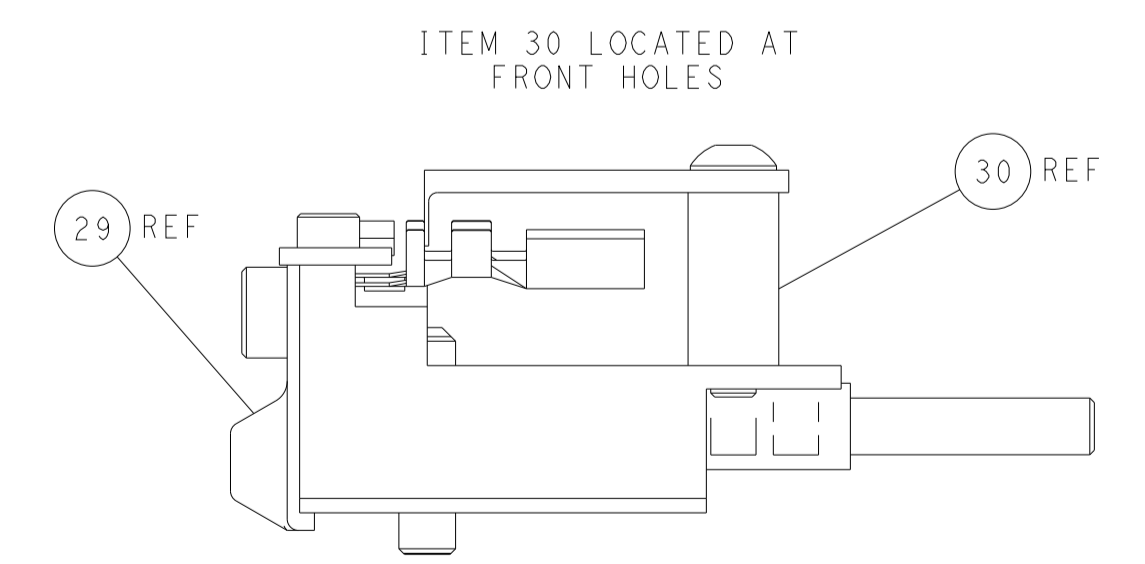
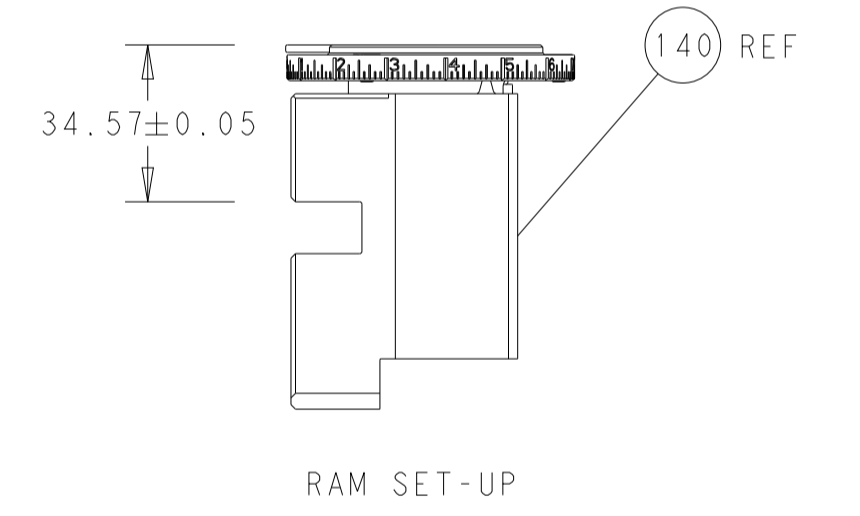
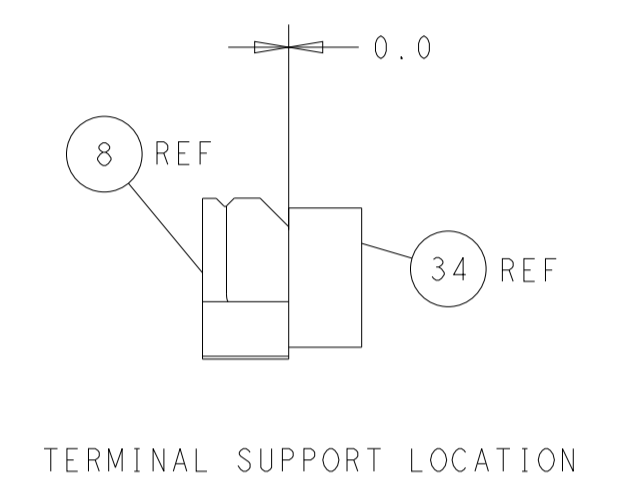
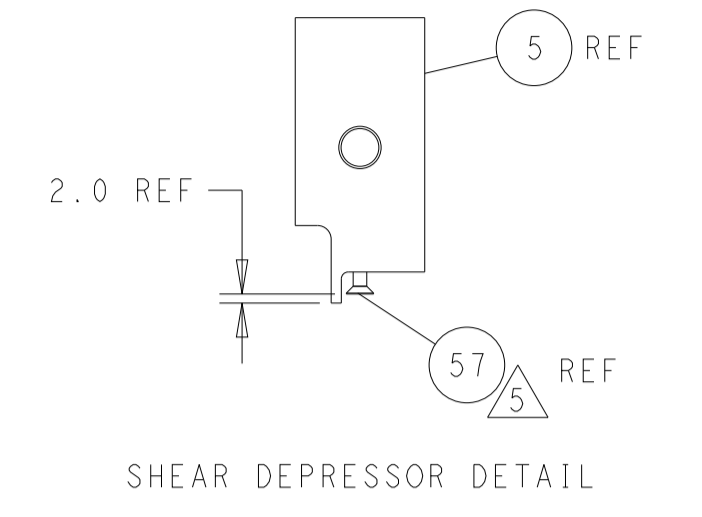
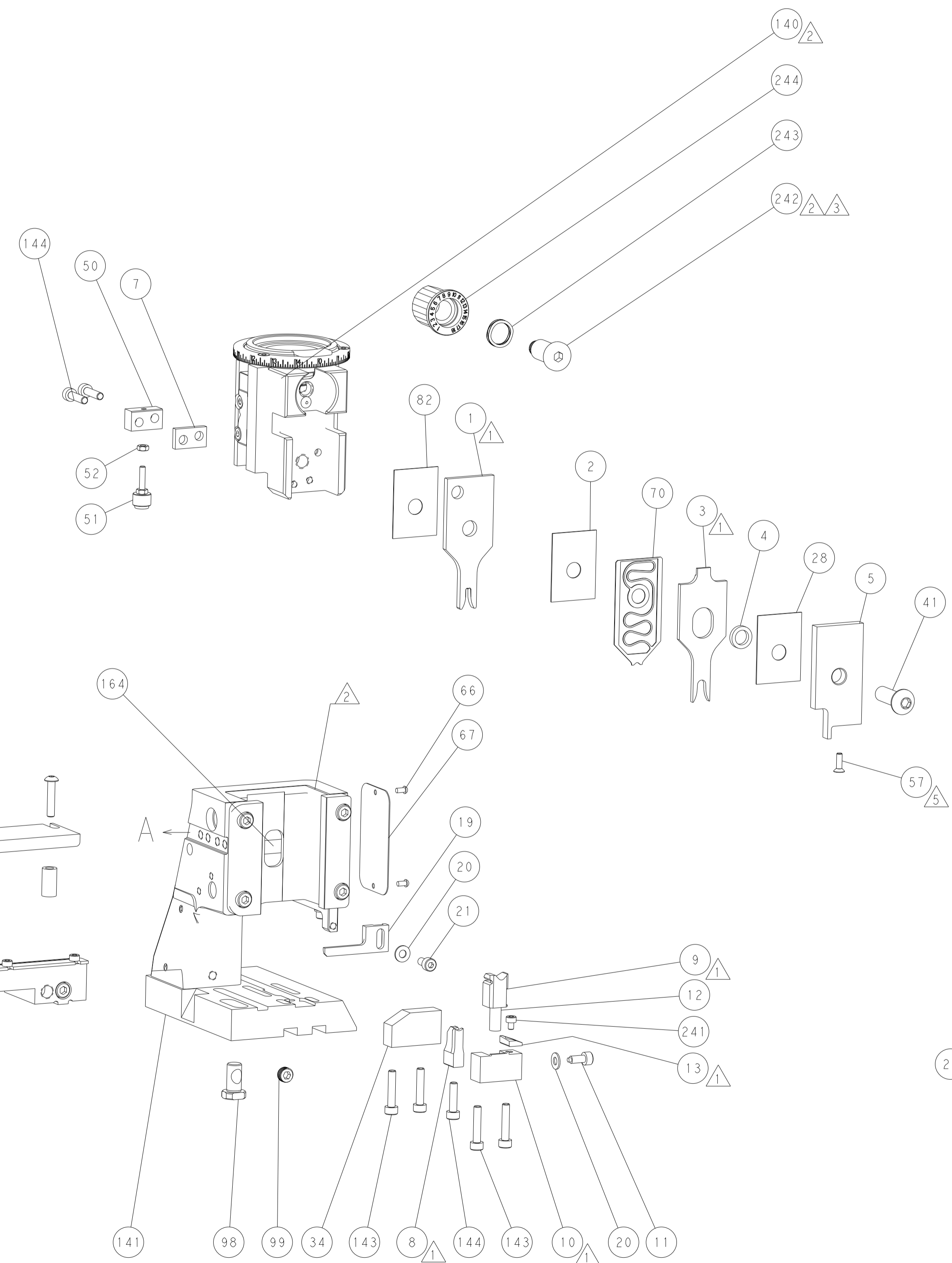
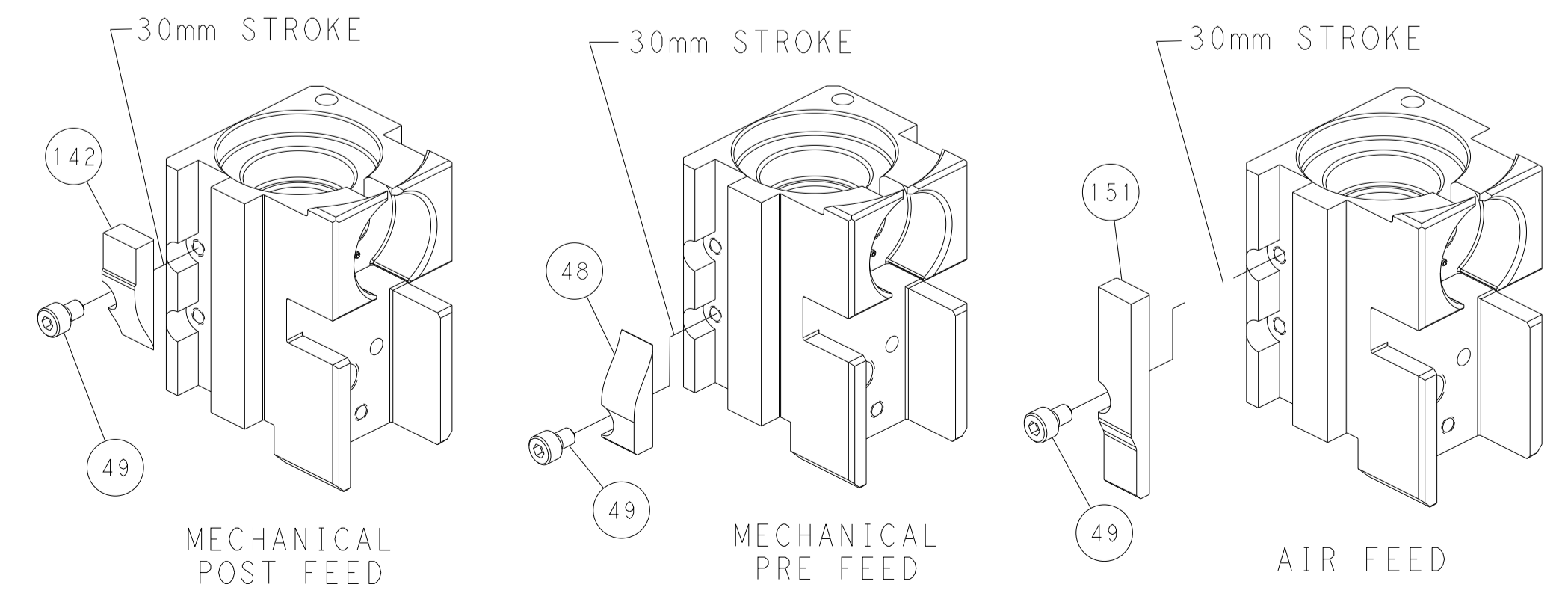


# FEED SPRING SETTING POSITION (SHOWN FROM REAR SIDE)



DETAIL A

# CAM POSITIONS



**PACIFIC VERSION**  
 Shown on sheets 3 of 4 & 4 of 4  
 (Atlantic version shown on sheets 1 of 4 & 2 of 4)

|   |  |  |  |
|---|--|--|--|
| <small>THIS DRAWING IS UNPUBLISHED. RELEASED FOR PUBLICATION 2017. ALL RIGHTS RESERVED. THIS DRAWING IS UNPUBLISHED. RELEASED FOR PUBLICATION 2017. ALL RIGHTS RESERVED. THIS DRAWING IS UNPUBLISHED. RELEASED FOR PUBLICATION 2017. ALL RIGHTS RESERVED.</small> |  | DWN: B. WEAVER 15MAY2017<br>CHK: T. ELBIN 15MAY2017<br>APVD: T. ELBIN 15MAY2017                                  | TE Connectivity<br>Harrisburg, PA 17105-3608               |
| DIMENSIONS: mm<br>TOLERANCES UNLESS OTHERWISE SPECIFIED:<br>0 PLC ±<br>1 PLC ±<br>2 PLC ±<br>3 PLC ±<br>4 PLC ±<br>ANGLES FINISH ±  |  | NAME: Ocean Side Feed Applicator<br>APPLICATION SPEC: -<br>SIZE: A1<br>CAGE CODE: 00779<br>DRAWING NO: C=2836789 | RESTRICTED TO: -<br>SCALE: 1:2<br>SHEET: 4 OF 4<br>REV: C1 |
| MATERIAL: -<br>WEIGHT: -  |  | Customer Accessible Production Drawing   |  |