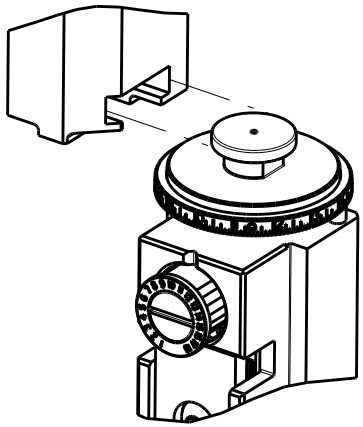


8	7				
THIS DRAWING IS UNPUBLISHED.		RELEASED FOR PUBLICATION		2017	
© COPYRIGHT 2017		BY TYCO ELECTRONICS CORPORATION. ALL RIGHTS RESERVED.			
ATLANTIC VERSION TERMINATOR INTERFACE ADAPTER		PART NUMBER	REVISION	DESCRIPTION	
	2836739-1	A	FINE CRIMP HEIGHT ADJUST		
	2836739-2	A	FINE CRIMP HEIGHT ADJUST		
	2836739-5	A	FINE CRIMP HEIGHT ADJUST		
	2836739-6	A	NON-CRIMP HEIGHT ADJUST		
	2836739-7	A	FINE CRIMP HEIGHT ADJUST		
	7-2836739-7	A	CRIMP TOOLING KIT		

APPLICATOR DATA		
CRIMP	SIZE	TYPE
WIRE	1.57 mm [.062]	F
INSUL	1.78 mm [.070]	F
APPLICATOR INSTRUCTIONS 408-10389		

TERMINAL DATA: HL TERMINAL		TE CRIMP SPECIFICATION	
TERMINAL NAME: TERMINAL			
WIRE STRIP LENGTH 3.81-4.57 mm [.150-.180 IN]		INSULATION DIAMETER RANGE Ø0.93-1.24 mm [.037-.049 IN]	
TERMINAL APPLICATION SPECIFICATION		NONE	
TERMINAL APPLICATION SPECIFICATION		-	
TERMINALS APPLIED		-	
TERMINALS APPLIED			
TE TERMINAL		HL TERMINAL	
2318271-1		619223	

WIRE SIZE	CRIMP HEIGHT mm [INCH]	CRIMP HEIGHT REFERENCE SETTING
0.35mm2	1.03+/-0.05 [.041+/- .002]	6.8



- 1 RECOMMENDED SPARE PARTS
- 2 GREASE BEARING SURFACES LIGHTLY
3. LUBRICATE DAILY PER THE APPLICATOR INSTRUCTION SHEET SUPPLIED WITH THE APPLICATOR.
- 4 APPLICATOR SPECIFIC DATA TO BE ENTERED INTO BLANK MEMORY CHIP AT ASSEMBLY. SEE BELOW FOR PART NUMBER:  
MECHANICAL FEED WITH "SMART APPLICATOR" CONVERSION: 8-2836739-4  
PNEUMATIC FEED WITH "SMART APPLICATOR" CONVERSION: 8-2836739-4  
SERVO FEED WITH "FINE CRIMP HEIGHT ADJUST": 8-2836739-5  
SERVO FEED WITH "NON-CRIMP HEIGHT ADJUST": 8-2836739-6
5. ADJUSTMENT OF THE STRIPPER MAY BE REQUIRED WHEN MOVING THE APPLICATOR BETWEEN BENCH AND LEADMAKER APPLICATIONS.
- 6 APPLY PART NUMBER 1-23419-5 LOCTITE TO THREADS OF ITEM 62. APPLY PART NUMBER 2-23419-6 LOCTITE TO THREADS OF ITEM 242. FOR -6 ONLY APPLY PART NUMBER 1-23419-5 LOCTITE TO THREADS OF ITEM 37.
- 7 GREASE THREADS, GROOVE AND O-RING ON ITEMS 35 & 252.
- 8 MAGNET, ITEM 166 MUST BE ORIENTED CORRECTLY IN ORDER TO PROPERLY ACTUATE THE COUNTER.
- 9 CRIMP HEIGHT REFERENCE SETTING WAS THE SETTING USED WHEN THE APPLICATOR WAS QUALIFIED AT THE FACTORY. ADJUSTMENT MAY BE NECESSARY WHEN RUNNING APPLICATOR IN THE FIELD.
- 10 SPARE FEED CAM STORAGE LOCATION REFER TO INSTRUCTION SHEET FOR ADDITIONAL INFORMATION.
- 11 TO CONVERT THE APPLICATOR TO A NON-CARRIER CUTTING STYLE, REMOVE ITEM 13 AND ATTACH TO THE LOCATION ON THE BACK SIDE OF THE HOUSING. REFER TO INSTRUCTION SHEET FOR ADDITIONAL INFORMATION.
- 12 WHEN ASSEMBLING A NON CRIMP HEIGHT ADJUST APPLICATOR (-6) USE SHIMS FROM ITEM 260 TO ACHIEVE A NOMINAL SHIM HEIGHT OF 4.77.

\*WARNING  
ON INSTALLATION, SET WIRE DISC, ITEM 40 TO LARGEST WIRE SIZE SETTING. USE OF SETTINGS BELOW MINIMUM REQUIRED CRIMP HEIGHT SETTING WILL CAUSE DAMAGE TO CRIMP TOOLING.

-	-	1	-	-	-	2119957-2	APPLICATOR SHIM PACK	260
-77	-7	-6	-5	-2	-1	PART NO	DESCRIPTION	ITEM NO

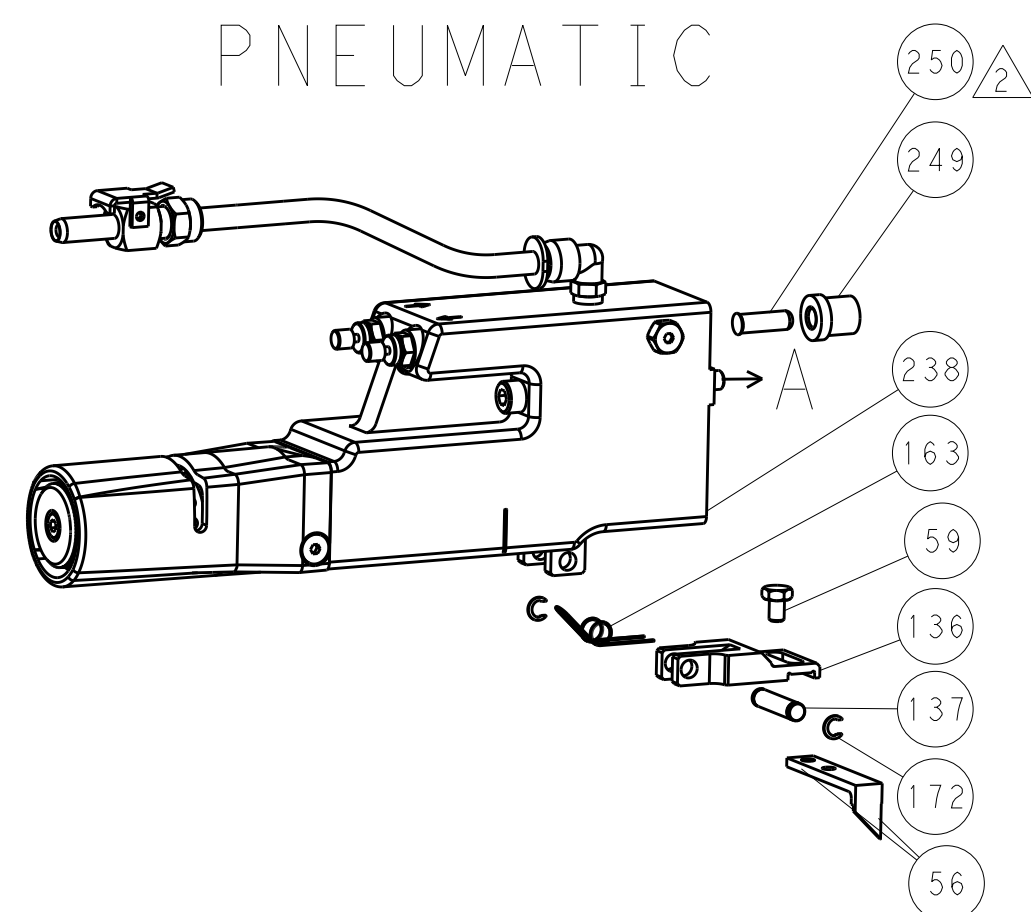
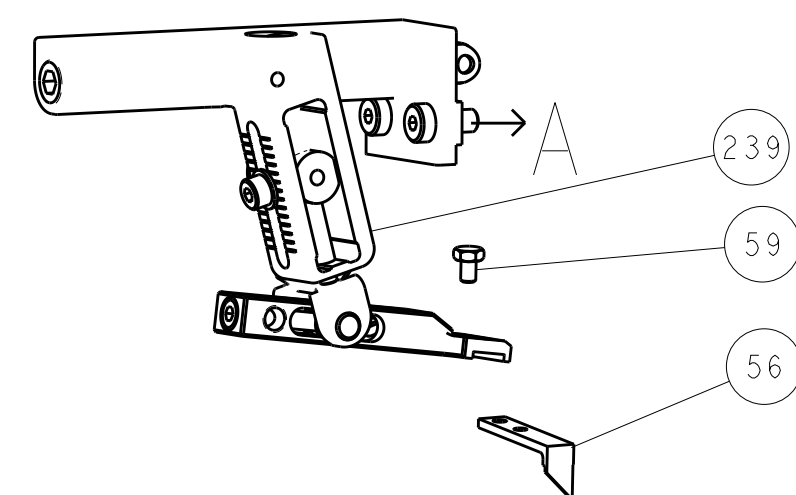
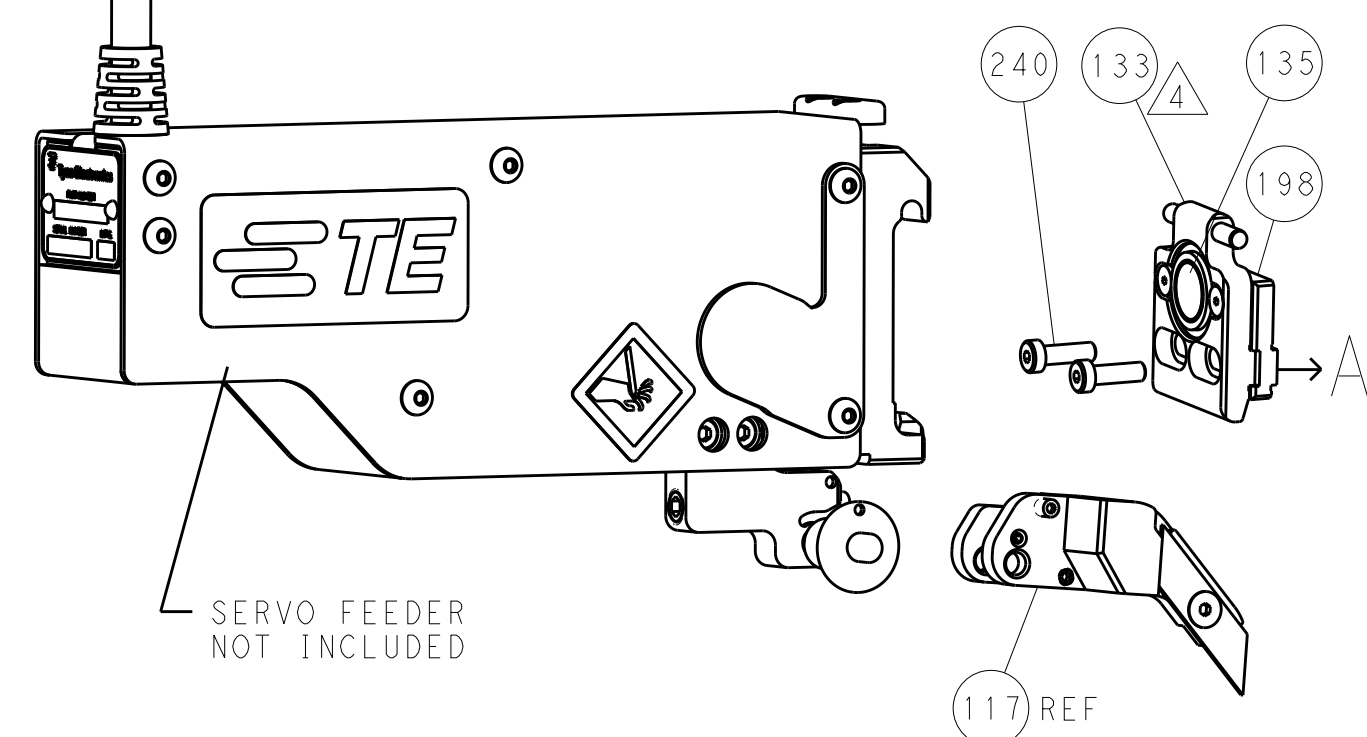
ATLANTIC VERSION  
Shown on sheets 1 of 4 & 2 of 4  
(Pacific version shown on sheets 3 of 4 & 4 of 4)

SET UP GAUGE 2119599-1	LOC A	DIST 66	REVISIONS				
P	LTR	DESCRIPTION			DATE	OWN	APVD
	A	RELEASE			02JUN2017	AW	CT

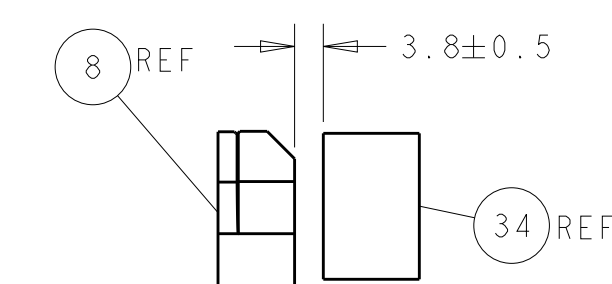
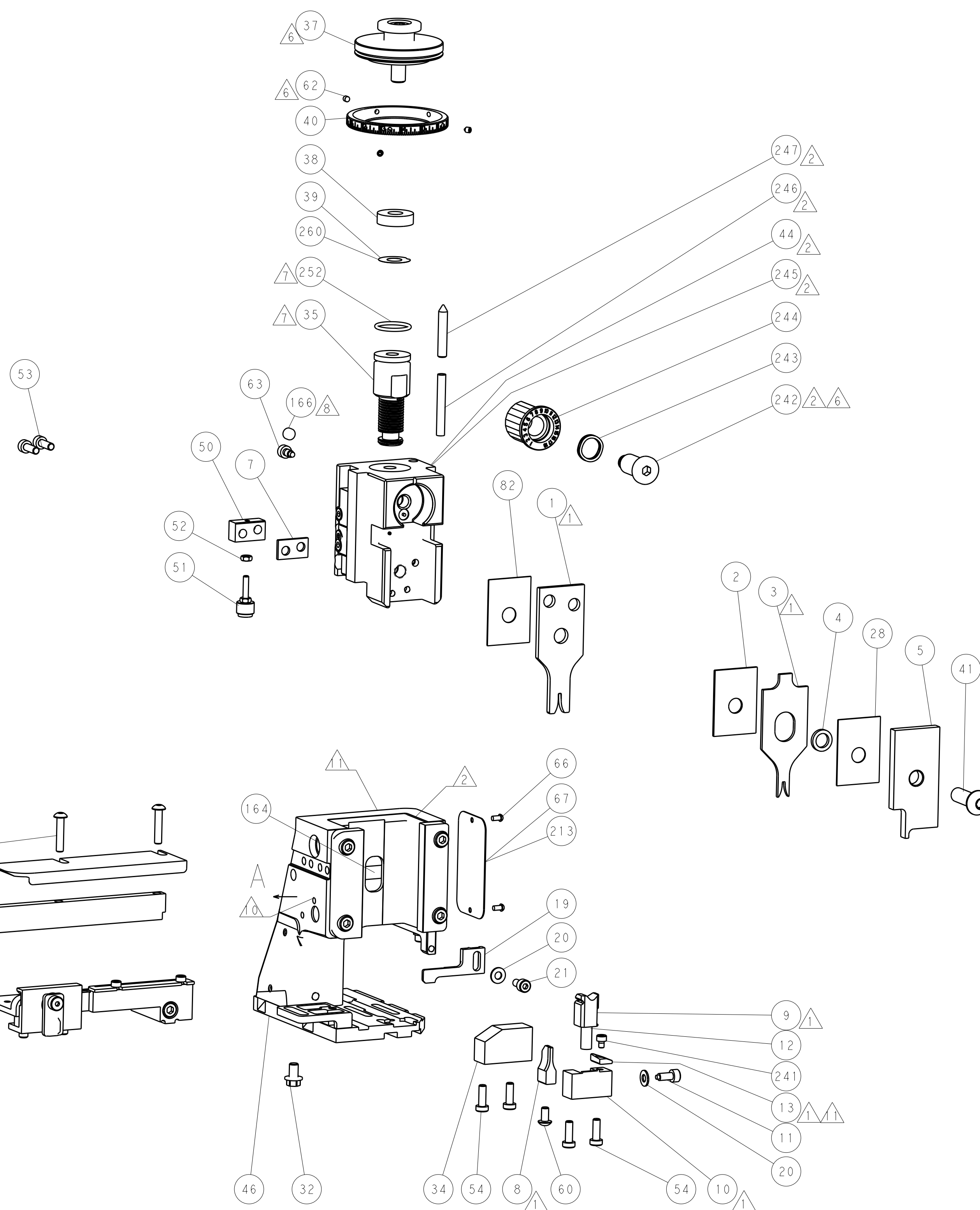
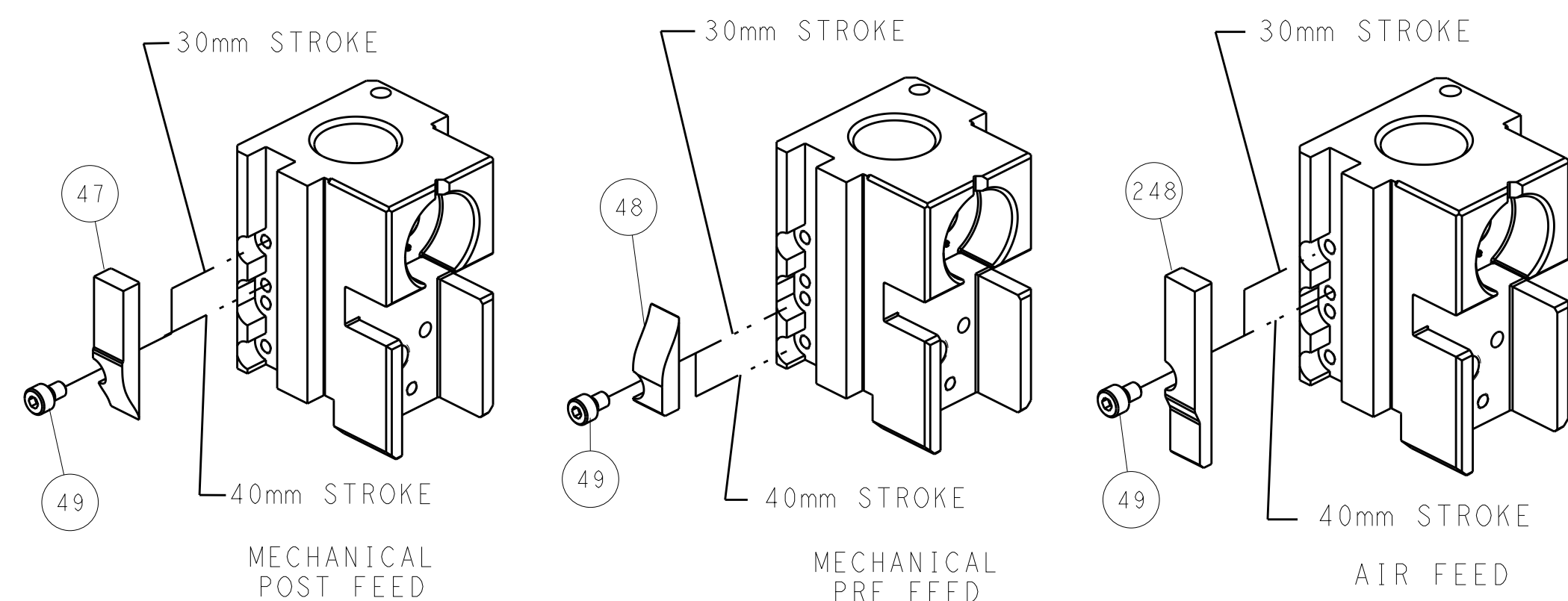
6	-	1	-	1	1	1	8-21084-0	O-RING, .676 ID, .070 DIA. MAT.	252
	-	-	-	-	1	-	2119640-1	PUSH ROD, AIR FEED	250
	-	-	-	-	1	-	1803259-1	BUSHING, FLANGED	249
	-	-	-	-	1	-	2119641-1	FEED CAM, AIR FEED	248
	-	1	-	1	1	1	2119798-1	DETENT PIN	247
	-	1	-	1	1	1	1-22279-3	SPRING, COMPRESSION	246
	-	-	1	-	-	-	2119758-1	RAM, AMP STYLE, SIDE FEED, NON-ADJ.	245
	-	1	1	1	1	1	2119082-8	CAM, SNAIL, INSULATION ADJUSTMENT	244
	-	1	1	1	1	1	2079764-1	WASHER, WAVE SPRING, CREST-TO-CREST	243
	-	1	1	1	1	1	2119083-1	RETAINER, INSULATION DIAL	242
6	-	1	1	1	1	1	7-18023-7	SCR, SKT HD CAP M3 X 4.0	241
	-	-	2	2	-	-	2168400-6	SHCS, LOW HEAD, RoHS, M5 X 16	240
	-	-	-	-	-	1	2119580-1	MECHANICAL FEED ASSEMBLY	239
	-	-	-	-	1	-	2063440-1	AIR FEED MODULE	238
	-	-	1	1	-	-	2119740-2	TAG, IDENTIFICATION	213
	-	-	1	1	-	-	1901094-3	SPACER, FEEDER	198
	-	-	-	-	2	-	21045-3	RING, RETAIN, EXTERN, 3/16 CRESCENT	172
	-	1	1	1	1	1	994969-1	MAGNET, RARE EARTH HIGH ENERGY	166
	-	REF	REF	REF	REF	REF	994970-2	COUNTER, MAGNETIC	164
	-	-	-	-	1	-	240638-1	SPRING, FEED FINGER	163
6	-	-	-	-	1	-	3-23627-7	PIN, RETAIN, GRVD, 3/16 X .854	137
	-	-	-	-	1	-	2119799-1	HOLDER,FEED FINGER, AF	136
	-	-	REF	REF	-	-	SEE NOTE 4	MEMORY CHIP, PROGRAMMED	135
	-	-	1	1	-	-	1633743-1	SERVO FEED LATCH ASM	133
	-	-	REF	REF	-	-	2119944-1	FEED FINGER ASSEMBLY,SF	117
	-	1	1	1	1	1	455888-5	SPACER, CRIMPER	82
	-	1	1	1	1	1	2119956-1	DOCUMENTATION PACKAGE	71
	-	1	-	-	1	1	2119740-1	TAG,IDENTIFICATION	67
	-	2	2	2	2	2	2168078-1	SCREW, DRIVE, RH, RoHS, 2 x .188	66
	-	1	-	1	1	1	2119793-1	LIMITER, ADJUSTMENT BOLT	63
6	-	3	-	3	3	3	992763-5	SCR, SET, SOC, CONE POINT, M3 x 4.0	62
	-	1	1	1	1	1	2079383-4	SCR, BHSC, RoHS (M4 X 8)	60
	-	-	-	-	1	1	5-18022-5	SCR, HEX HD CAP, M4 X 6.0	59
	-	-	-	-	1	1	1338685-1	PAWL, FEED	56
	-	4	4	4	4	4	2168400-1	SHCS, LOW HEAD, RoHS, M4 X 12	54
	-	2	2	2	2	2	2168083-3	SCR, SKT HD CAP, RoHS, M4 X 12.0	53
	-	1	1	1	1	1	5018030-1	NUT, HEX, REG, RoHS, M3	52
	-	1	1	1	1	1	811242-5	BUMPER, HOLD DOWN	51
	-	1	1	1	1	1	690753-2	SPACER, TONKER	50
	-	-	-	-	1	2	18023-9	SCR, SKT HD CAP M4 X 6.0	49
6	-	-	-	-	-	1	2119652-1	FEED CAM, PRE FEED	48
	-	-	-	-	-	1	2119653-1	FEED CAM, POST FEED	47
	-	1	1	1	1	1	2119656-9	APPLICATOR BASIC ASSEMBLY, SF	46
	-	1	-	1	1	1	2119370-1	RAM, AMP STYLE, SIDE FEED	44
	-	1	1	1	1	1	2079383-7	SCR, BHSC, RoHS (M8 X 25)	41
	-	1	-	1	1	1	2119645-1	DISC, NUMBERED FA WIRE ADJUSTMENT	40
	-	1	-	1	1	1	2119957-1	APPLICATOR SHIM PACK	39
	-	1	1	1	1	1	2119644-1	RAM WASHER, PRECISION	38
	-	1	1	1	1	1	2119085-1	FA HEAD, ATLANTIC STYLE	37
	-	1	-	1	1	1	2119092-1	BOLT, ADJUSTMENT	35
1	-	1	1	1	1	1	1752356-3	SUPPORT, TERMINAL	34
	-	2	2	2	2	2	2079383-5	SCR, BHSC, RoHS (M4 X 20)	33
	-	1	1	1	1	1	2161328-1	HEX HEAD, FLANGED, M5 x 8mm LONG	32
	-	1	1	1	1	1	1-1320908-0	SPACER, STRIP GUIDE	30
	-	1	1	1	1	1	2119959-1	ASSEMBLY, STRIP GUIDE	29
	-	1	1	1	1	1	455888-5	SPACER, CRIMPER	28
	-	1	1	1	1	1	1320928-2	STRIP GUIDE	24
	-	1	1	1	1	1	2168083-2	SCR, SKT HD CAP, RoHS, M4 X 8.0	21
	-	2	2	2	2	2	1-18028-2	WASHER, FLAT, REG M4	20
	-	1	1	1	1	1	2119533-1	STRIPPER, SIDE FEED	19
1	-	1	1	1	1	1	2119806-1	INSERT, SHEAR	13
	-	1	1	1	1	1	3-22280-3	SPRING, COMPRESSION	12
	-	1	1	1	1	1	1-356885-4	STOP, SHEAR	11
	-	1	1	1	1	1	2119805-1	SHEAR HOLDER, FRONT	10
	-	1	1	1	1	1	1803095-1	FLOATING SHEAR, FRONT	9
	1	1	1	1	1	1	6-1633918-5	ANVIL, COMBINATION	8
	-	1	1	1	1	1	3-240641-3	SPACER	7
	-	-	-	-	-	-	-	-	6
	-	1	1	1	1	1	2119757-8	DEPRESSOR, SHEAR	5
	-	1	1	1	1	1	238011-7	BLOCK, CRIMPER SPACER	4
1	1	1	1	1	1	1	2-2119582-0	CRIMPER, INSULATION F PREMIUM	3
	-	1	1	1	1	1	1-455888-0	SPACER, CRIMPER	2
	1	1	1	1	1	1	1-456403-5	CRIMPER, WIRE PREMIUM	1
	-77	-7	-6	-5	-2	-1	PART NO	DESCRIPTION	ITEM NO

THIS IS SUBJECT TO CHANGE WITHOUT NOTICE. THE USER SHALL BE RESPONSIBLE FOR VERIFYING THE LATEST REVISIONS. IT IS SUBJECT TO CHANGE WITHOUT NOTICE. THE USER SHALL BE RESPONSIBLE FOR VERIFYING THE LATEST REVISIONS.				OWN D. WEAVER	20APR2017	TE Connectivity Harrisburg, PA 17105-3608	
DIMENSIONS:				CHK T. ELBIN	20APR2017	NAME Ocean Side Feed Applicator	
mm				APVD T. ELBIN	20APR2017	SIZE CAGE CODE DRAWING NO	
0 PLC ± 1 PLC ± 2 PLC ± 3 PLC ± 4 PLC ± ANGLES ±				PRODUCT SPEC		RESTRICTED TO	
MATERIAL				APPLICATION SPEC		00779 ©=2836739	
FINISH				WEIGHT		Customer Accessible Production Drawing	
-				SCALE		1:2	
-				SHEET		1 OF 4	
-				REV		A	

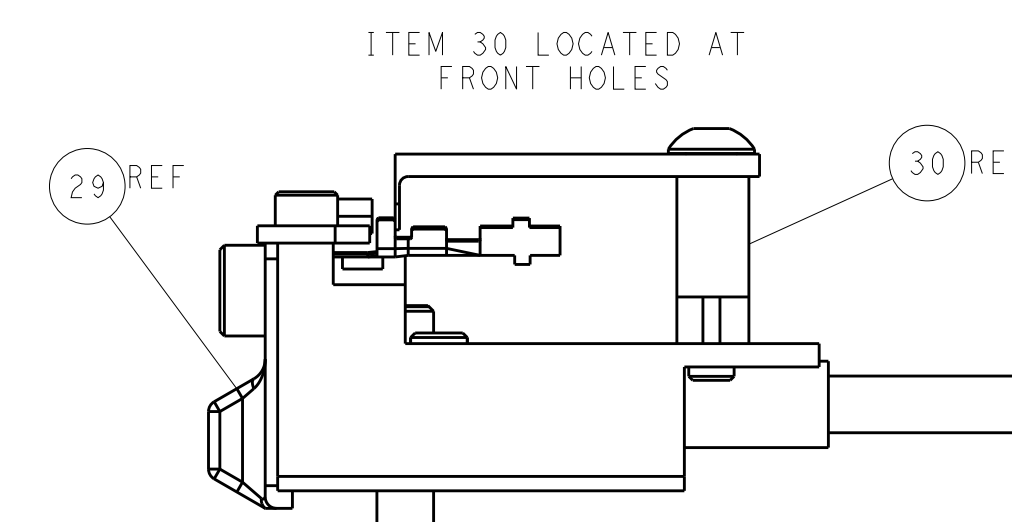
## PNEUMATIC

SERVO  
LATCH PLATE

## CAM POSITIONS



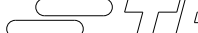

TERMINAL SUPPORT LOCATION



FEED TRACK POSITION  
GUIDE BY INSULATION BARREL

## ATLANTIC VERSION

Shown on sheets 1 of 4 & 2 of 4  
(Pacific version shown on sheets 3 of 4 & 4 of 4)

<small>THIS DRAWING IS A CONTROLLED DOCUMENT FOR THE  IT IS SUBJECT TO CHANGE AND THE CONTROLLING ENGINEERING ORGANIZATION  MAY BE CONTACTED FOR THE LATEST REVISIONS.</small>		<small>DWN</small> 20APR2017 <small>CHK</small> <b>W</b> <small>WEAVER</small> 20APR2017 <small>APP'D</small> <b>T</b> <small>ELBIN</small> 20APR2017		 <b>TE Connectivity</b> Harrisburg, PA 17105-3608	
<small>DIMENSIONS:</small> mm		<small>TOLERANCES UNLESS OTHERWISE SPECIFIED:</small> 0. PLC ±.1 1. PLC ±.1 2. PLC ±.1 3. PLC ±.1 4. PLC ±.1 ANGLES ±.1		<small>NAME</small> Ocean Side Feed Applicator	
		<small>PRODUCT SPEC</small> - <small>APPLICATION SPEC</small> -		<small>SIZE</small> <b>A</b> <small>CAGE CODE</small> 00779 <small>DRAWING NO</small> C=2836739	
<small>MATERIAL</small> -		<small>FINISH</small> -		<small>RESTRICTED TO</small> -	
<small>WEIGHT</small> -		Customer Accessible Production Drawing			
		<small>SCALE</small> 1:2 <small>SHEET</small> 2 <small>OF</small> 4 <small>REV</small> A			

8

7

6

5

4

3

2

1

THIS DRAWING IS UNPUBLISHED.

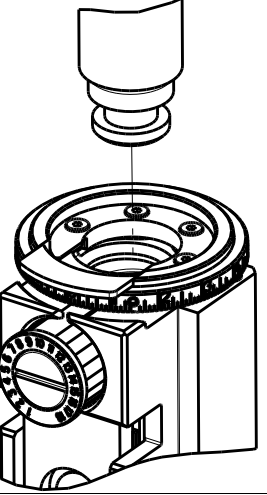
RELEASED FOR PUBLICATION

2017

© COPYRIGHT 2017

BY TYCO ELECTRONICS CORPORATION. ALL RIGHTS RESERVED.

PACIFIC VERSION  
TERMINATOR  
INTERFACE ADAPTER



PART  
NUMBER

2-2836739-1

REVISION

A

DESCRIPTION

FINE CRIMP HEIGHT ADJUST

FEED TYPE

MECHANICAL

CONVERT TO

PNEUMATIC FEED

PART NUMBERS REQUIRED

2119950-1

1338683-8

5-18022-5

2119641-2

2119799-1

2063440-1

CONVERT TO

SERVO LATCH PLATE

PART NUMBERS REQUIRED

2119951-1

-

8-2836739-5

1901094-3

-

2168400-6 (QUANTITY 2)

CONVERT TO

SMART APPLICATOR

PART NUMBERS REQUIRED

2161326-1

-

8-2836739-4

-

-

CONVERT TO

MECHANICAL FEED

PART NUMBERS REQUIRED

2119949-1

1338683-8

5-18022-5

2119653-2

-

-

CONVERT TO

SERVO LATCH PLATE

PART NUMBERS REQUIRED

2119951-1

-

8-2836739-5

1901094-3

-

2168400-6 (QUANTITY 2)

CONVERT TO

SMART APPLICATOR

PART NUMBERS REQUIRED

2161326-1

-

8-2836739-4

-

-

CONVERT TO

MECHANICAL FEED

PART NUMBERS REQUIRED

2119949-1

1338683-8

5-18022-5

2119653-2

-

-

CONVERT TO

PNEUMATIC FEED

PART NUMBERS REQUIRED

2119950-1

1338683-8

5-18022-5

2119641-2

2119799-1

2063440-1

CONVERT TO

-

PART NUMBERS REQUIRED

-

-

-

-

-

CONVERT TO

-

PART NUMBERS REQUIRED

-

-

-

-

-

2-2836739-2

A

FINE CRIMP HEIGHT ADJUST

PNEUMATIC

CONVERT TO

MECHANICAL FEED

PART NUMBERS REQUIRED

2119949-1

1338683-8

5-18022-5

2119653-2

-

-

CONVERT TO

SERVO LATCH PLATE

PART NUMBERS REQUIRED

2119951-1

-

8-2836739-5

1901094-3

-

2168400-6 (QUANTITY 2)

CONVERT TO

SMART APPLICATOR

PART NUMBERS REQUIRED

2161326-1

-

8-2836739-4

-

-

CONVERT TO

MECHANICAL FEED

PART NUMBERS REQUIRED

2119949-1

1338683-8

5-18022-5

2119653-2

-

-

CONVERT TO

PNEUMATIC FEED

PART NUMBERS REQUIRED

2119950-1

1338683-8

5-18022-5

2119641-2

2119799-1

2063440-1

CONVERT TO

-

PART NUMBERS REQUIRED

-

-

-

-

-

CONVERT TO

-

PART NUMBERS REQUIRED

-

-

-

-

-

2-2836739-5

A

FINE CRIMP HEIGHT ADJUST

SERVO LATCH PLATE

CONVERT TO

MECHANICAL FEED

PART NUMBERS REQUIRED

2119949-1

1338683-8

5-18022-5

2119653-2

-

-

CONVERT TO

SERVO LATCH PLATE

PART NUMBERS REQUIRED

2119951-1

-

8-2836739-5

1901094-3

-

2168400-6 (QUANTITY 2)

CONVERT TO

SMART APPLICATOR

PART NUMBERS REQUIRED

2161326-1

-

8-2836739-4

-

-

CONVERT TO

MECHANICAL FEED

PART NUMBERS REQUIRED

2119949-1

1338683-8

5-18022-5

2119653-2

-

-

CONVERT TO

PNEUMATIC FEED

PART NUMBERS REQUIRED

2119950-1

1338683-8

5-18022-5

2119641-2

2119799-1

2063440-1

CONVERT TO

-

PART NUMBERS REQUIRED

-

-

-

-

-

CONVERT TO

-

PART NUMBERS REQUIRED

-

-

-

-

-

2-2836739-7

A

FINE CRIMP HEIGHT ADJUST

NONE

CONVERT TO

-

PART NUMBERS REQUIRED

-

-

-

-

-

CONVERT TO

-

PART NUMBERS REQUIRED

-

-

-

-

-

7-2836739-7

A

CRIMP TOOLING KIT

-

CONVERT TO

-

PART NUMBERS REQUIRED

-

-

-

-

-

CONVERT TO

-

PART NUMBERS REQUIRED

-

-

-

-

-

APPLICATOR DATA

CRIMP

SIZE

TYPE

WIRE

1.57 mm [.062]

F


INSUL

1.78 mm [.070]

F

APPLICATOR INSTRUCTIONS

408-10389



TERMINAL DATA: HL TERMINAL

TE CRIMP SPECIFICATION

TERMINAL NAME: TERMINAL

WIRE STRIP LENGTH

3.81-4.57 mm [.150-.180 IN]

INSULATION DIAMETER RANGE

Ø0.93-1.24 mm [.037-.049 IN]

TERMINAL APPLICATION SPECIFICATION

NONE

-

-

TERMINAL APPLICATION SPECIFICATION

-

-

-

TERMINALS APPLIED

TE TERMINAL

HL TERMINAL


TE TERMINAL

HL TERMINAL


2318271-1

619223

WIRE SIZE



CRIMP HEIGHT mm [INCH]



CRIMP HEIGHT REFERENCE SETTING

0.35mm2

1.03+/-0.05 [.041+/- .002]

6.8

RECOMMENDED SPARE PARTS

GREASE BEARING SURFACES LIGHTLY

3. LUBRICATE DAILY PER THE APPLICATOR INSTRUCTION SHEET SUPPLIED WITH THE APPLICATOR.

4. APPLICATOR SPECIFIC DATA TO BE ENTERED INTO BLANK MEMORY CHIP AT ASSEMBLY. SEE BELOW FOR PART NUMBER:  
MECHANICAL FEED WITH "SMART APPLICATOR" CONVERSION: 8-2836739-4  
PNEUMATIC FEED WITH "SMART APPLICATOR" CONVERSION: 8-2836739-4  
SERVO FEED WITH "FINE CRIMP HEIGHT ADJUST": 8-2836739-5

5. ADJUSTMENT OF THE STRIPPER MAY BE REQUIRED WHEN MOVING THE APPLICATOR BETWEEN BENCH AND LEADMAKER APPLICATIONS.

6. APPLY PART NUMBER 1-23419-5 LOCTITE TO THREADS OF ITEM 62.  
APPLY PART NUMBER 2-23419-6 LOCTITE TO THREADS OF ITEM 242.

7. GREASE THREADS, GROOVE AND O-RING ON ITEMS 139 & 152.

8. MAGNET MUST BE ORIENTED CORRECTLY IN ORDER TO PROPERLY ACTUATE THE COUNTER.

9. CRIMP HEIGHT REFERENCE SETTING WAS THE SETTING USED WHEN THE APPLICATOR WAS QUALIFIED AT THE FACTORY. ADJUSTMENT MAY BE NECESSARY WHEN RUNNING APPLICATOR IN THE FIELD.

10. SPARE FEED CAM STORAGE LOCATION REFER TO INSTRUCTION SHEET FOR ADDITIONAL INFORMATION.

11. TO CONVERT THE APPLICATOR TO A NON-CARRIER CUTTING STYLE, REMOVE ITEM 13 AND ATTACH TO THE LOCATION ON BACK SIDE OF THE HOUSING. REFER TO INSTRUCTION SHEET FOR ADDITIONAL INFORMATION.

PACIFIC VERSION

Shown on sheets 3 of 4 & 4 of 4

(Atlantic version shown on sheets 1 of 4 & 2 of 4)

SET UP GAUGE

2119599-1

LOC

A

DIST

66

REVISIONS

P

LTR

DESCRIPTION

DATE

OWN

APVD

-

-

SEE SHEET 1

-

-

-

-

1

1

1

1

2119957-2

APPLICATOR SHIM PACK

260

-

1

1

1

1

2119782-1

FINE ADJUST HEAD ASM, PACIFIC STYLE

251

-

-

-

1

-

2119640-1

PUSH ROD, AIR FEED

250

-

-

-

-

1

1803259-1

BUSHING, FLANGED

249

-

1

1

1

1

1-22279-3

SPRING, COMPRESSION

246

-

1

1

1

1

2119082-8

CAM, SNAIL, INSULATION ADJUSTMENT

244

-

1

1

1

1

2079764-1

WASHER, WAVE SPRING, CREST-TO-CREST

243

-

1

1

1

1

2119083-1

RETAINER, INSULATION DIAL

242

-

1

1

1

1

7-18023-7

SCR, SKT HD CAP M3 X 4.0

241

-

-

2

-

-

2168400-6

SHCS, LOW HEAD, RoHS, M5 X 16

240

-

-

-

-

1

2119580-1

MECHANICAL FEED ASSEMBLY

239

-

-

-

-

1

2063440-1

AIR FEED MODULE

238

-

-

1

-

-

2119740-2

TAG,IDENTIFICATION

213

-

-

1

-

-

1901094-3

SPACER, FEEDER

198

-

-

-

2

-

21045-3

RING, RETAIN, EXTERN, 3/16 CRESCENT

172

-

1

1

1

1

994969-1

MAGNET, RARE EARTH HIGH ENERGY

166

-

REF

REF

REF

REF

994970-2

COUNTER, MAGNETIC

164

-

-

-

-

1

240638-1

SPRING, FEED FINGER

163

-

1

1

1

1

8-21084-1

O-RING, .801 ID, .070 DIA. MAT.

152

-

-

-

-

1

2119641-2

FEED CAM, AIR FEED

151

-

1

1

1

1

2119798-2

DETENT PIN

145

-

1

1

1

1

2079383-8

SCR, BHSC, RoHS (M4 X 16)

144

-

4

4

4

4

2168400-5

SHCS, LOW HEAD, RoHS, M4 X 20

143

-

-

-

-

-

2119653-2

FEED CAM, POST FEED

142

-

1

1

1

1

1-2119656-0

APPLICATOR BASIC ASSEMBLY, SF

141

-

1

1

1

1

2119650-1

RAM, ASIAN STYLE, SIDE FEED

140

-

1

1

1

1

2119092-2

BOLT, ADJUSTMENT

139

-

-

-

-

1

3-23627-7

PIN, RETAIN, GRVD, 3/16 X .854

137

-

-

-

-

1

2119799-1

HOLDER,FEED FINGER, AF

136

-

-

REF

-

-

SEE NOTE 4

MEMORY CHIP, PROGRAMMED

135

-

-

1

-

-

1633743-1

SERVO FEED LATCH ASM

133

-

-

REF

-

-

2119944-1

FEED FINGER ASSEMBLY,SF

117

-

1

1

1

1

455888-5

SPACER, CRIMPER

82

-

1

1

1

1

2119956-1

DOCUMENTATION PACKAGE

71

-

1

-

-

1

2119740-1

TAG,IDENTIFICATION

67

-

2

2

2

2

2168078-1

SCREW, DRIVE, RH, RoHS, 2 x .188

66

-

1

1

1

1

2119793-1

LIMITER, ADJUSTMENT BOLT

63

-

3

3

3

3

992763-5

SCR, SET, SOC, CONE POINT, M3 x 4.0

62

-

-

-

-

1

5-18022-5

SCR, HEX HD CAP, M4 X 6.0

59

-

-

-

-

1

1338685-1

PAWL, FEED

56

-

2

2

2

2

2168083-3

SCR, SKT HD CAP, RoHS, M4 X 12.0

53

-

1

1

1

1

5018030-1

NUT, HEX, REG, RoHS, M3

52

-

1

1

1

1

811242-5

BUMPER, HOLD DOWN

51

-

1

1

1

1

690753-2

SPACER, TONKER

50

-

-

-

-

1

18023-9

SCR, SKT HD CAP M4 X 6.0

49

-

-

-

-

1

2119652-1

FEED CAM, PRE FEED

48

-

1

1

1

1

2079383-7

SCR, BHSC, RoHS (M8 X 25)

41

-

1

1

1

1

2119645-1

DISC, NUMBERED FA WIRE ADJUSTMENT

40

-

1

1

1

1

2119957-1

APPLICATOR SHIM PACK

39

-

1

1

1

1

2119644-1

RAM WASHER, PRECISION

38

-

1

1

1

1

1752356-3

SUPPORT, TERMINAL

34

-

2

2

2

2

2079383-5

SCR, BHSC, RoHS (M4 X 20)

33

-

1

1

1

1

2161328-1

HEX HEAD, FLANGED, M5 x 8mm LONG

32

-

1

1

1

1

1-1320908-0

SPACER, STRIP GUIDE

30

-

1

1

1

1

2119959-1

ASSEMBLY, STRIP GUIDE

29

-

1

1

1

1

455888-5

SPACER, CRIMPER

28

-

1

1

1

1

1320928-2

STRIP GUIDE

24

-

1

1

1

1

2168083-2

SCR, SKT HD CAP, RoHS, M4 X 8.0

21

-

2

2

2

2

1-18028-2

WASHER, FLAT, REG M4

20

-

1

1

1

1

2119533-1

STRIPPER, SIDE FEED

19

-

1

1

1

1

2119806-1

INSERT, SHEAR

13

-

1

1

1

1

3-22280-3

SPRING, COMPRESSION

12

-

1

1

1

1

1-356885-4

STOP, SHEAR

11

-

1

1

1

1

2119805-1

SHEAR HOLDER, FRONT

10

-

1

1

1

1

1803095-1

FLOATING SHEAR, FRONT

9

-

1

1

1

1

1

6-1633918-5

ANVIL, COMBINATION

8

-

1

1

1

1

1

3-240641-3

SPACER

7

-

-

-

-

-

-

-

6

-

1

1

1

1

2119757-8

DEPRESSOR, SHEAR

5

-

1

1

1

1

238011-7

BLOCK, CRIMPER SPACER

4

-

1

1

1

1

1

2-2119582-0

CRIMPER, INSULATION F PREMIUM

3

-

1

1

1

1

1

1-455888-0

SPACER, CRIMPER

2

-

1

1

1

1

1

1-456403-5

CRIMPER, WIRE PREMIUM

1

-

77

-27

-25

-22

-21

PART NO

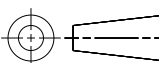
DESCRIPTION

ITEM NO

THE FOLLOWING IS A SUMMARY OF THE INFORMATION CONTAINED IN THIS DRAWING. IT IS SUBJECT TO CHANGE WITHOUT NOTICE AND WITHOUT NOTICE TO THE USER. IT IS SUBJECT TO CHANGE WITHOUT NOTICE AND WITHOUT NOTICE TO THE USER. IT IS SUBJECT TO CHANGE WITHOUT NOTICE AND WITHOUT NOTICE TO THE USER.

DIMENSIONS:

mm



0 PLC

1 PLC

2 PLC

3 PLC

4 PLC

ANGLES

FINISH

TOLERANCES UNLESS OTHERWISE SPECIFIED:

±

±

±

±

±

±

±

OWN

B. WEAVER

20APR2017

CHK

T. ELBIN

20APR2017

APVD

T. ELBIN

20APR2017

PRODUCT SPEC

APPLICATION SPEC

WEIGHT

Customer Accessible Production Drawing

NAME

Ocean Side Feed Applicator

SIZE

CAGE CODE

DRAWING NO

RESTRICTED TO

00779

©=2836739

SCALE

1:2

SHEET

3

OF

4

REV

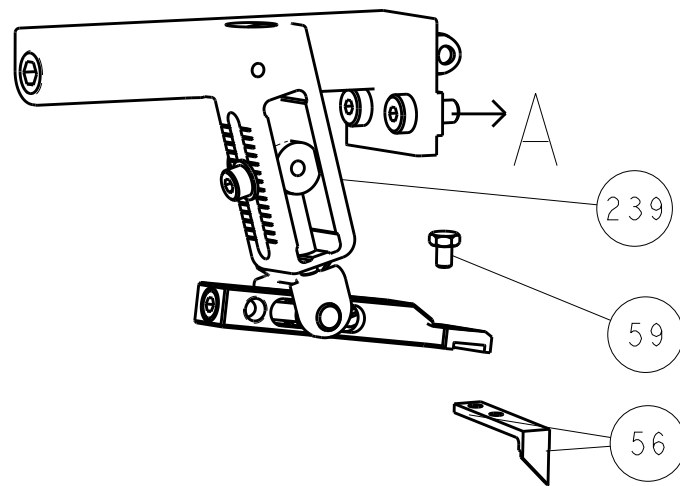
A

AMP 4805 REV 31MAR2000

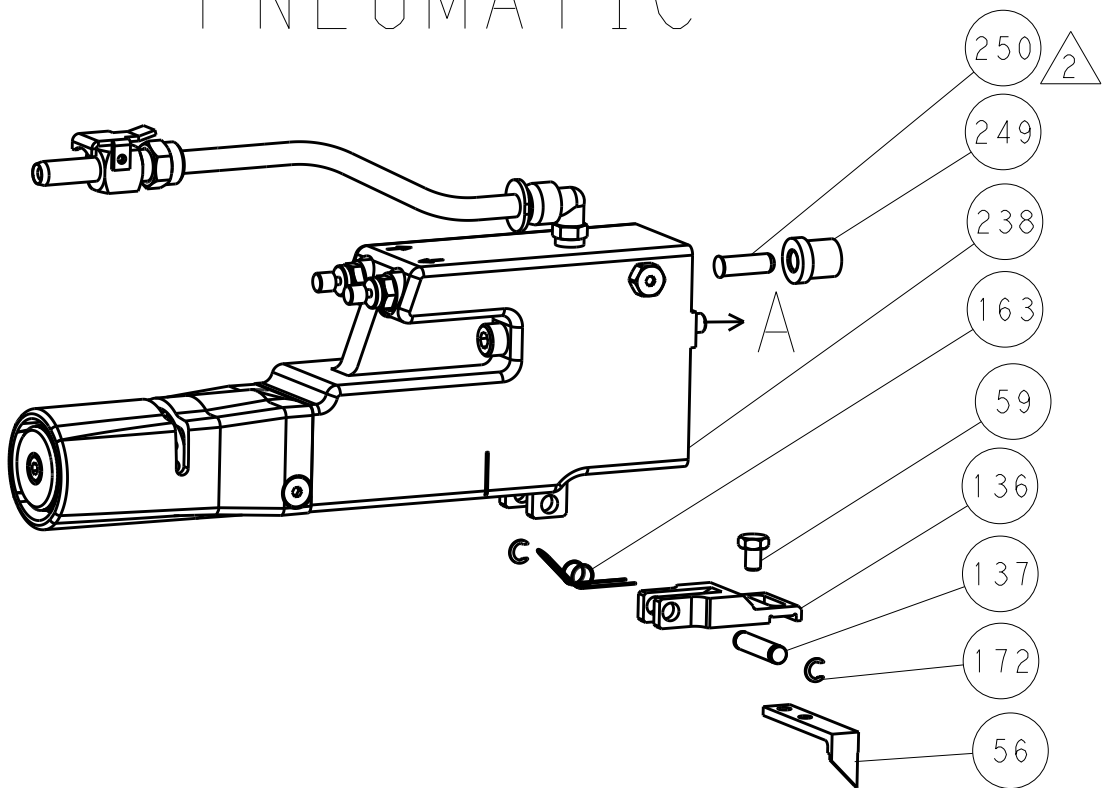
SHEETS 1 & 2 ARE NOT REQUIRED FOR PACIFIC VERSION

LOC	DIST	REVISIONS					
		P	LTR	DESCRIPTION	DATE	DWN	APVD
A	66	-	-	SEE SHEET 1	-	-	-

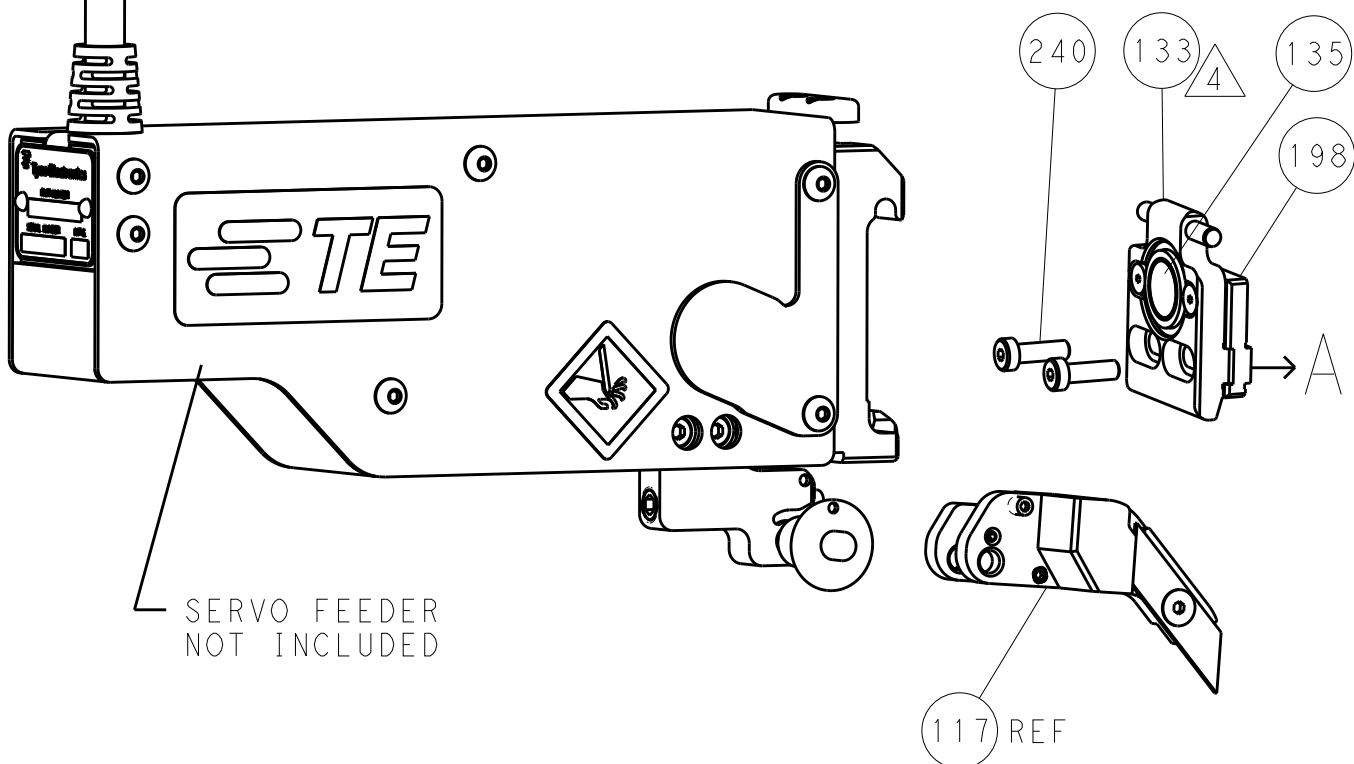
FEED TYPE  
MECHANICAL



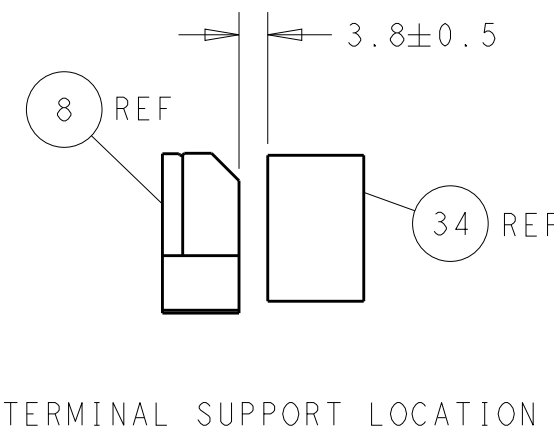
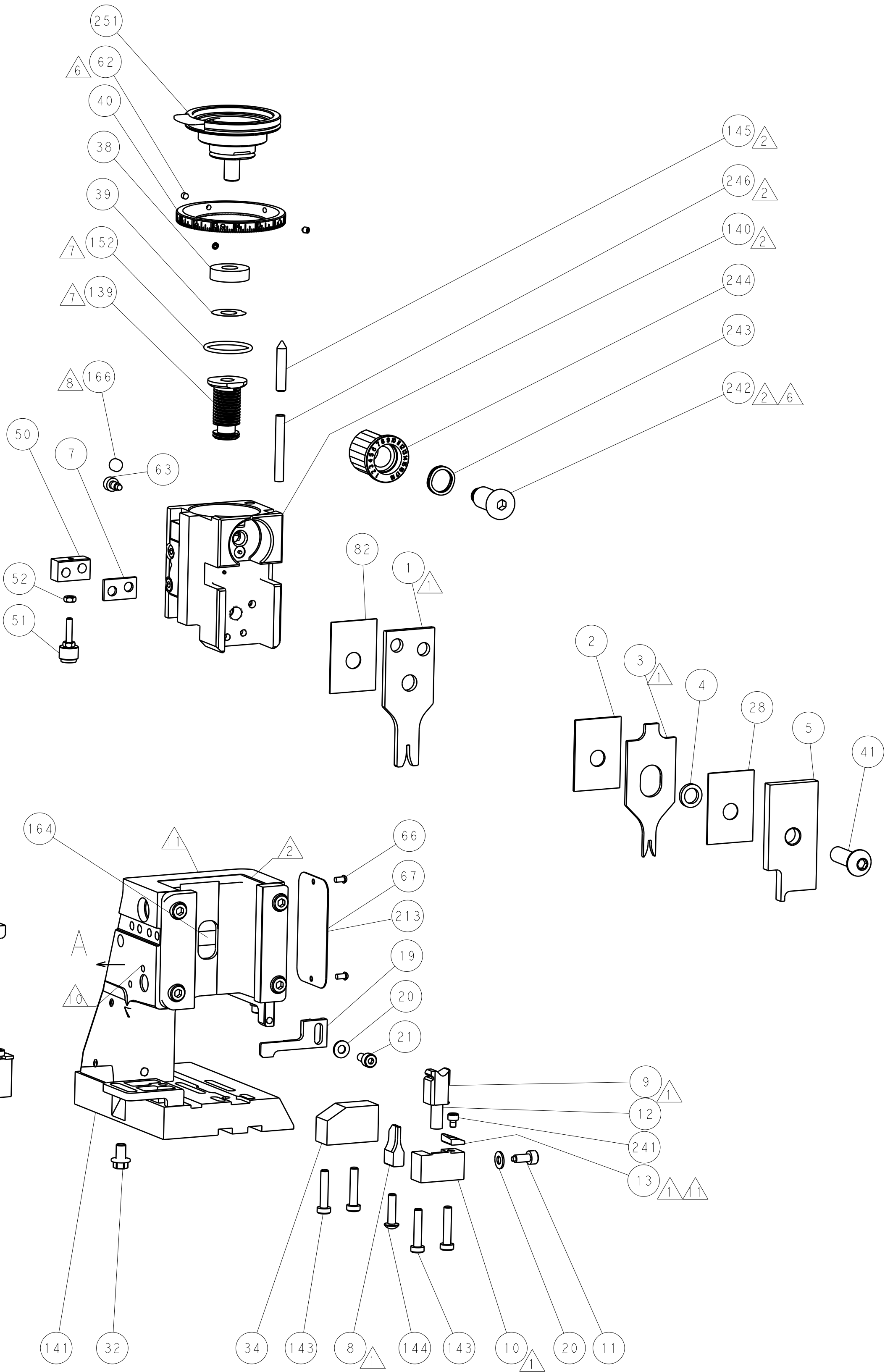
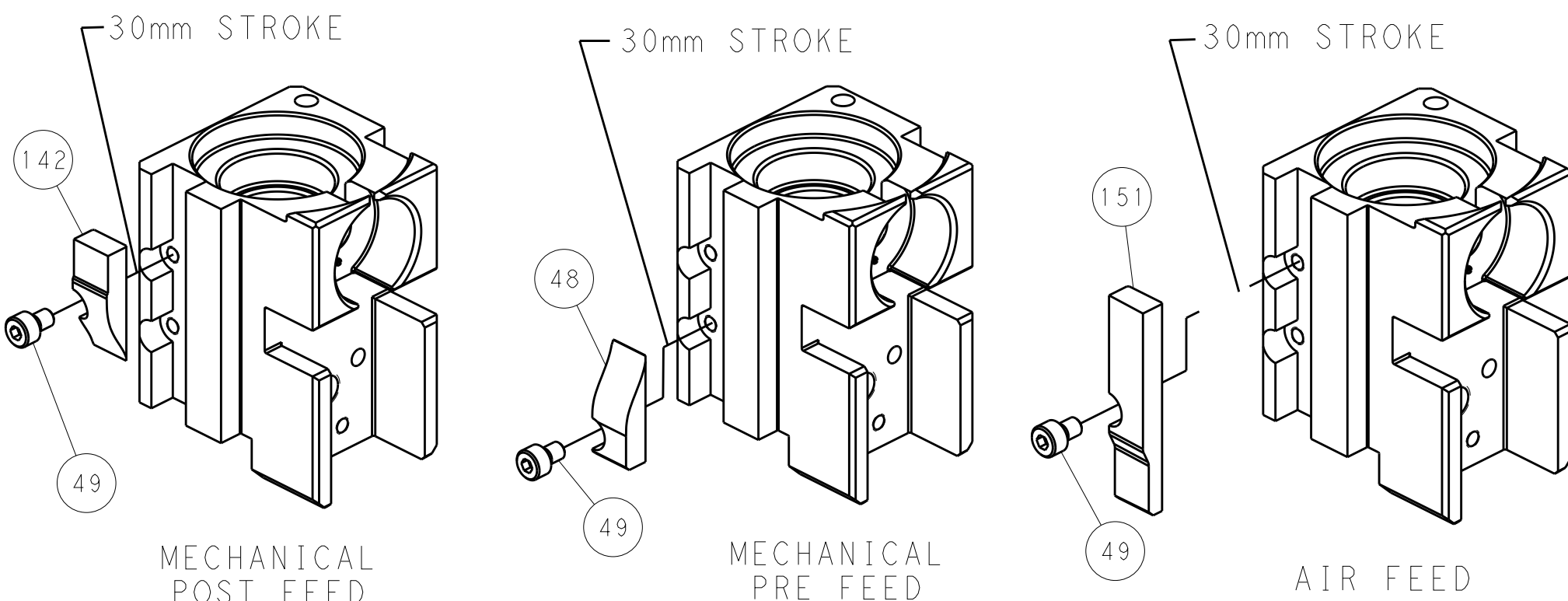
PNEUMATIC



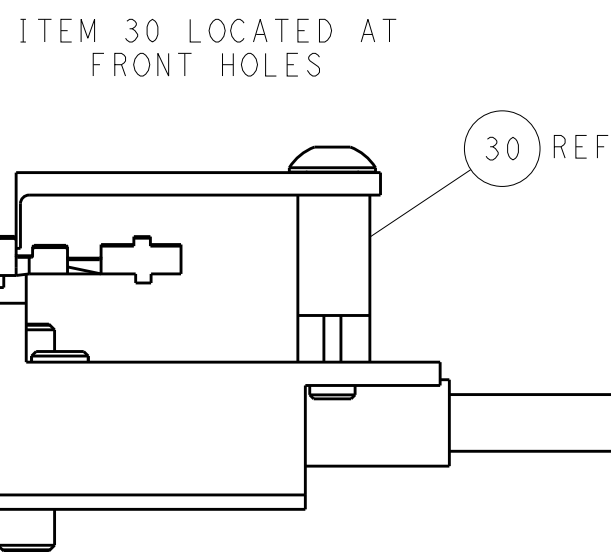
SERVO  
LATCH PLATE



CAM POSITIONS



TERMINAL SUPPORT LOCATION



FEED TRACK POSITION  
GUIDE BY INSULATION BARREL

PACIFIC VERSION  
Shown on sheets 3 of 4 & 4 of 4  
(Atlantic version shown on sheets 1 of 4 & 2 of 4)

THIS DRAWING IS UNPUBLISHED. IT IS SUBJECT TO CHANGE WITHOUT NOTICE. ANY CHANGES TO THIS DRAWING SHALL BE CONTACTED FOR THE LATEST REVISION.				OWN: B. WEAVER 20APR2017 CHK: T. ELBIN 20APR2017 APVD: T. ELBIN 20APR2017				TE Connectivity Harrisburg, PA 17105-3608			
DIMENSIONS:				TOLERANCES UNLESS OTHERWISE SPECIFIED:				NAME: Ocean Side Feed Applicator			
mm				0 PLC ±.1 1 PLC ±.1 2 PLC ±.1 3 PLC ±.1 4 PLC ±.1				SIZE: 00779			
MATERIAL: -				FINISH: -				CAGE CODE: 2836739			
				WEIGHT: -				Customer Accessible Production Drawing			
				SCALE: 1:2				SHEET 4 OF 4			
								REV A			