

PART NUMBER	REVISION	DESCRIPTION	FEED TYPE
2836687-2	G	FINE CRIMP HEIGHT ADJUST	PNEUMATIC
5-2836687-2	G	SEAL STRIPPER CRIMPER TERMINATING UNIT	PNEUMATIC
7-2836687-2	G	PNEUMATIC AND CRIMP TOOLING KIT	PNEUMATIC
7-2836687-7	A	CRIMP TOOLING KIT	-

ATLANTIC VERSION TERMINATOR INTERFACE ADAPTER



APPLICATOR DATA		
CRIMP	SIZE	TYPE
WIRE	0.91 mm [.036]	F
INSUL	0.86 mm [.034]	F

APPLICATOR INSTRUCTIONS
408-35042

TERMINAL DATA: HIROSE TERMINAL HIROSE CRIMP SPECIFICATION			
TERMINAL NAME: RECEPTACLE			
WIRE STRIP LENGTH	INSULATION DIAMETER RANGE		
1.20-1.90 mm [.047-.075 IN]	Ø0.65-1.00 mm [.026-.039 IN]		
TERMINAL APPLICATION SPECIFICATION	TAD-5024-030		
TERMINALS APPLIED			
TE TERMINAL	HIROSE TERMINAL	TE TERMINAL	HIROSE TERMINAL
286508-1	DF132630SCF	286508-2	DF132630SCFA
286508-3	DF132630SCFA		

WIRE SIZE	CRIMP HEIGHT mm [INCH]	CRIMP HEIGHT REFERENCE SETTING
26 AWG	0.50+/- .02 [.020+/- .001]	6.8
28 AWG	0.48+/- .02 [.019+/- .001]	7.0
30 AWG	0.47+/- .02 [.019+/- .001]	7.1

- RECOMMENDED SPARE PARTS
- REFER TO SUPPLIED INSTRUCTION SHEET FOR CLEANING, LUBRICATION AND STORAGE OF APPLICATOR.
- APPLY PART NUMBER 2-23419-6 LOCTITE TO THREADS OF ITEM 242.
- CRIMP HEIGHT REFERENCE SETTING WAS THE SETTING USED WHEN THE APPLICATOR WAS QUALIFIED AT THE FACTORY. ADJUSTMENT MAY BE NECESSARY WHEN RUNNING APPLICATOR IN THE FIELD.
- UNLESS SPECIFIED OTHERWISE TORQUE VALUES SHALL BE USED PER DOCUMENT, 101-35000.
- TERMINAL PITCH NOT COMPATIBLE WITH MECHANICAL FEED.
- TERMINAL LUBRICANT IS RECOMMENDED.
- PART OPTIONAL FOR BETTER LEADMAKER PERFORMANCE.

***WARNING**
ON INSTALLATION, SET WIRE DISC TO CRIMP HEIGHT REFERENCE SETTING FOR LARGEST WIRE SIZE. CRIMP HEIGHT REFERENCE SETTINGS GREATER THAN THE VALUE SHOWN MAY CAUSE DAMAGE TO THE CRIMP TOOLING, REFER TO THE INSTRUCTION SHEET FOR PROPER SETUP AND ADJUSTMENTS.

ATLANTIC VERSION
Shown on sheets 1 of 4 & 2 of 4
(Pacific version shown on sheets 3 of 4 & 4 of 4)

LOC	DIST	REVISIONS					
		P	LTN	DESCRIPTION	DATE	OWN	APVD
A	66	E		ECR-19-012491	07AUG2019	JAH	TE
		F		ECR-21-003411	19MAR2021	FJ	TE
		G		ECR-22-132760	17MAR2022	LG	TE
		G1		ECR-22-155877	18OCT2022	FZ	JAH

-	1	1	1	2-1803945-4	TONKER	300
-	1	1	1	22278-9	SPRING, COMPRESSION	299
-	2	2	2	4-18032-3	SCR, SET, FLT PNT, M3 X 6.0	298
-	1	1	1	1803944-1	SPACER, TONKER	297
-	-	1	-	4-1803583-8	APPLICATOR BASIC ASSEMBLY, SF	292
-	1	-	1	2079383-1	SCR, BHSC, RoHS (M3 X 8)	284
-	1	-	1	1633289-4	STABILIZER	283
-	1	-	1	1803461-1	HOLDER, STABILIZER	282
-	1	1	1	1-18028-3	WASHER, FLAT, REG M5	281
-	1	1	1	1803196-1	STUD, ADJUSTMENT SCREW	280
-	1	1	1	2330046-1	RESIN COLLAR, FLANGED	261
-	1	1	1	2119641-1	FEED CAM, AIR FEED	248
-	1	1	1	2119082-5	CAM, SNAIL, INSULATION ADJUSTMENT	244
-	1	1	1	2079764-1	WASHER, WAVE SPRING, CREST-TO-CREST	243
-	1	1	1	2119083-1	RETAINER, INSULATION DIAL	242
-	1	1	1	7-18023-7	SCR, SKT HD CAP M3 X 4.0	241
-	1	1	1	2844940-1	AIR FEED MODULE	238
-	REF	REF	REF	994970-2	COUNTER, MAGNETIC	164
-	1	1	1	1-22281-6	SPRING, COMPRESSION	121
-	1	1	1	2119955-1	ASSY, LUBRICATOR, SIDE FEED	113
-	1	1	1	2844908-1	SCREW, LOCKING	99
-	1	1	1	2844907-1	POST, LOCKING	98
-	1	1	1	1-690438-0	FRONT STRIP GUIDE	96
-	2	2	2	2168083-1	SCR, SKT HD CAP, RoHS, M3 X 8.0	95
-	1	1	1	1-994962-8	SCR, SKT HD CAP M3 X 45.0	93
-	1	1	1	1803607-3	DOCUMENTATION PACKAGE	71
-	1	1	1	2-2119791-2	DEPRESSOR, WIRE	70
-	1	1	1	2119943-1	WASHER, SPACER	69
-	1	1	1	2119740-1	TAG, IDENTIFICATION	67
-	2	2	2	2168078-1	SCREW, DRIVE, RH, RoHS, 2 x .188	66
-	2	2	2	2-18032-5	SCR, SET, FLT PNT, M5 X 20.0	61
-	1	1	1	2161425-1	SCREW, SHOULDER	60
-	1	1	1	5-18022-5	SCR, HEX HD CAP, M4 X 6.0	59
-	1	1	1	1338685-1	PAWL, FEED	56
-	4	4	4	2168083-3	SCR, SKT HD CAP, RoHS, M4 X 12.0	54
-	2	2	2	2-2168083-5	SCR, SKT HD CAP, RoHS, M4 X 14	53
-	1	1	1	18023-9	SCR, SKT HD CAP M4 X 6.0	49
-	1	-	1	2-1803583-5	APPLICATOR BASIC ASSEMBLY, SF	46
-	1	1	1	1803515-1	RAM ASSEMBLY, SF ATLANTIC	44
-	1	1	1	1803602-1	SCR, BHSC, RoHS (M8 X 25)	41
-	1	1	1	6-1752356-8	SUPPORT, TERMINAL	34
-	2	2	2	2079383-5	SCR, BHSC, RoHS (M4 X 20)	33
-	2	2	2	2-2844962-3	SPACER, CYLINDRICAL, STRIP GUIDE	30
-	1	1	1	2-2844938-0	PLATE, STRIP GUIDE	29
-	1	-	1	455888-5	SPACER, CRIMPER	28
-	2	2	2	1-22284-0	SPRING, COMPRESSION	27
-	1	1	1	356835-1	LEVER, DRAG RELEASE	26
-	1	1	1	240792-1	DRAG, TERMINAL	25
-	1	1	1	1320928-2	STRIP GUIDE	24
-	1	1	1	980371-4	SCR, SKT HD SHLDR 5.0 DIA X 6.0	23
-	1	-	1	2168083-2	SCR, SKT HD CAP, RoHS, M4 X 8.0	21
-	2	1	2	1-18028-2	WASHER, FLAT, REG M4	20
-	1	-	1	1803213-1	STRIPPER	19
-	1	1	1	2119806-1	INSERT, SHEAR	13
-	1	1	1	3-22280-3	SPRING, COMPRESSION	12
-	1	1	1	1-2168083-0	SCR, SKT HD CAP, RoHS, M4 X 10	11
-	1	1	1	2119805-1	SHEAR HOLDER, FRONT	10
-	1	1	1	1-1803095-4	FLOATING SHEAR, FRONT	9
-	1	2	1	1803395-5	ANVIL, COMBINATION	8
-	1	1	1	240641-9	SPACER	7
-	-	-	-	-	-	6
-	1	1	1	2-2119757-7	DEPRESSOR, SHEAR	5
-	1	1	1	1-238011-3	BLOCK, CRIMPER SPACER	4
-	1	2	1	1803493-2	CRIMPER, INSULATION F PREMIUM	3
-	1	1	1	455888-2	SPACER, CRIMPER	2
-	1	2	1	1-1803407-6	CRIMPER, WIRE PREMIUM	1

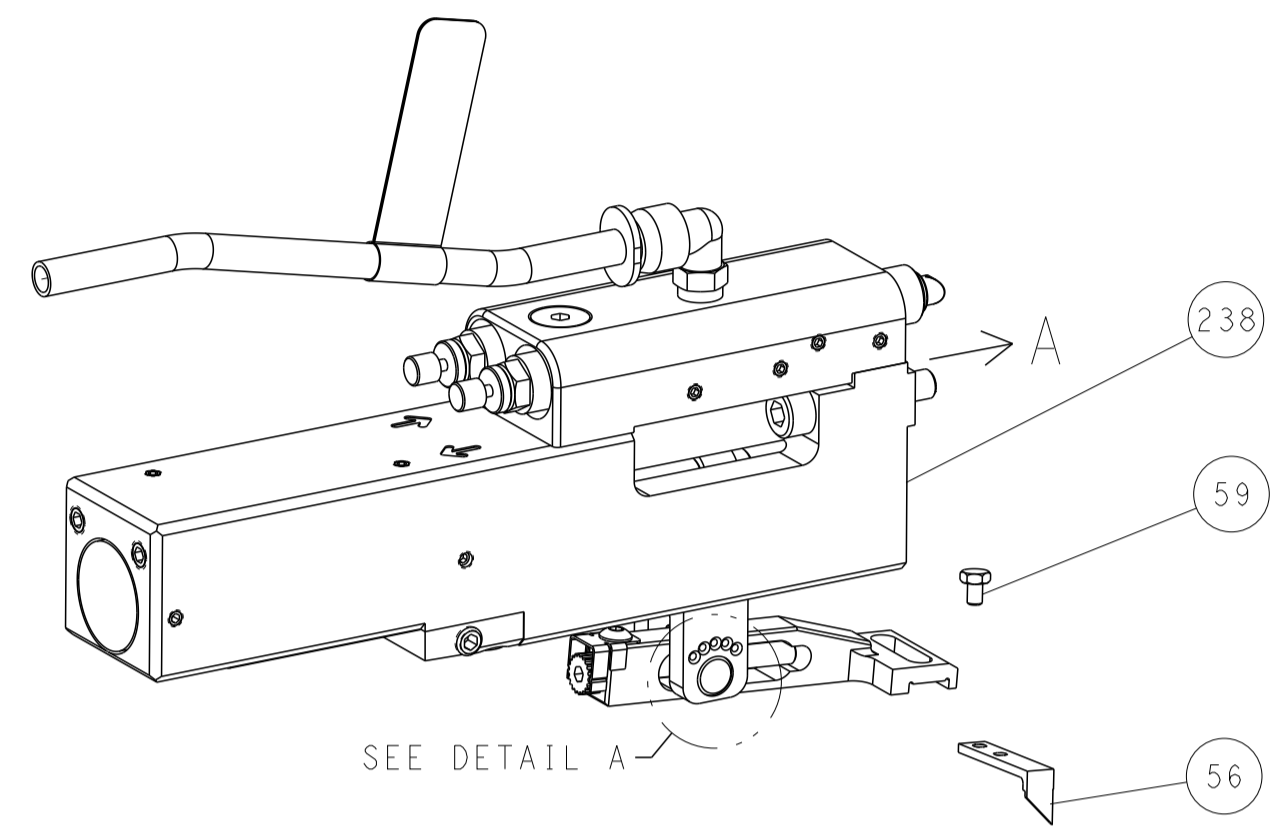
DIMENSIONS:		TOLERANCES UNLESS OTHERWISE SPECIFIED:		MATERIAL:		FINISH:		WEIGHT:	
mm	0 PLC ±	1 PLC ±	2 PLC ±	3 PLC ±	4 PLC ±	ANGLES ±	FINISH		
APPLICATOR SPEC		APPLICATION SPEC		MATERIAL		FINISH		WEIGHT	
APPLICATOR SPEC		APPLICATION SPEC		MATERIAL		FINISH		WEIGHT	

Customer Accessible Production Drawing SCALE 1:2 SHEET 1 OF 4 REV G1

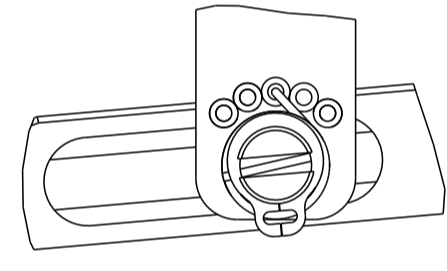
LOC		DIST		REVISIONS			
P	LTN	DESCRIPTION	DATE	DMN	APVD		
A	66	SEE SHEET 1					

FEED TYPE

PNEUMATIC

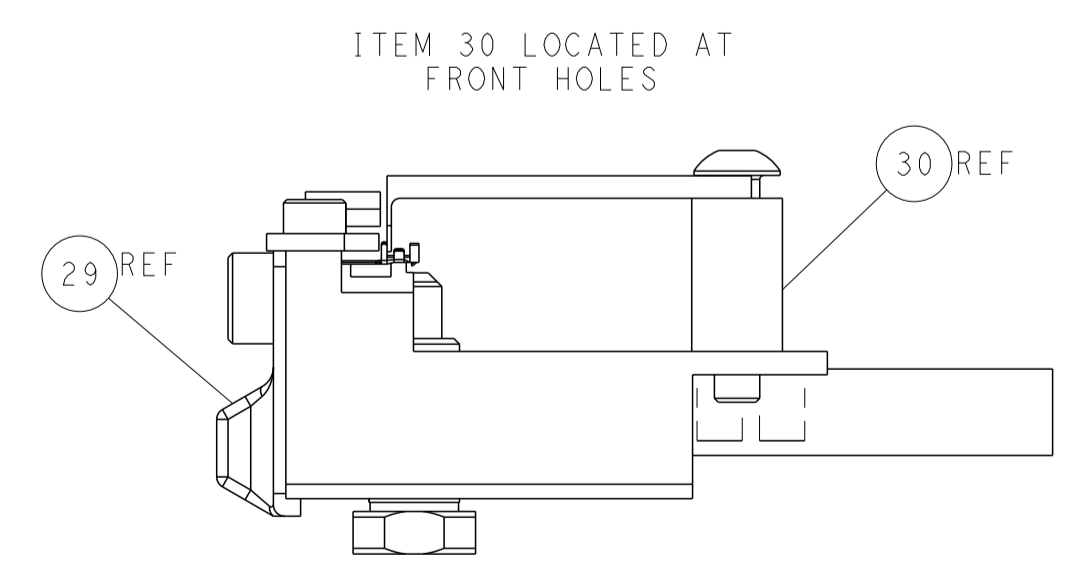
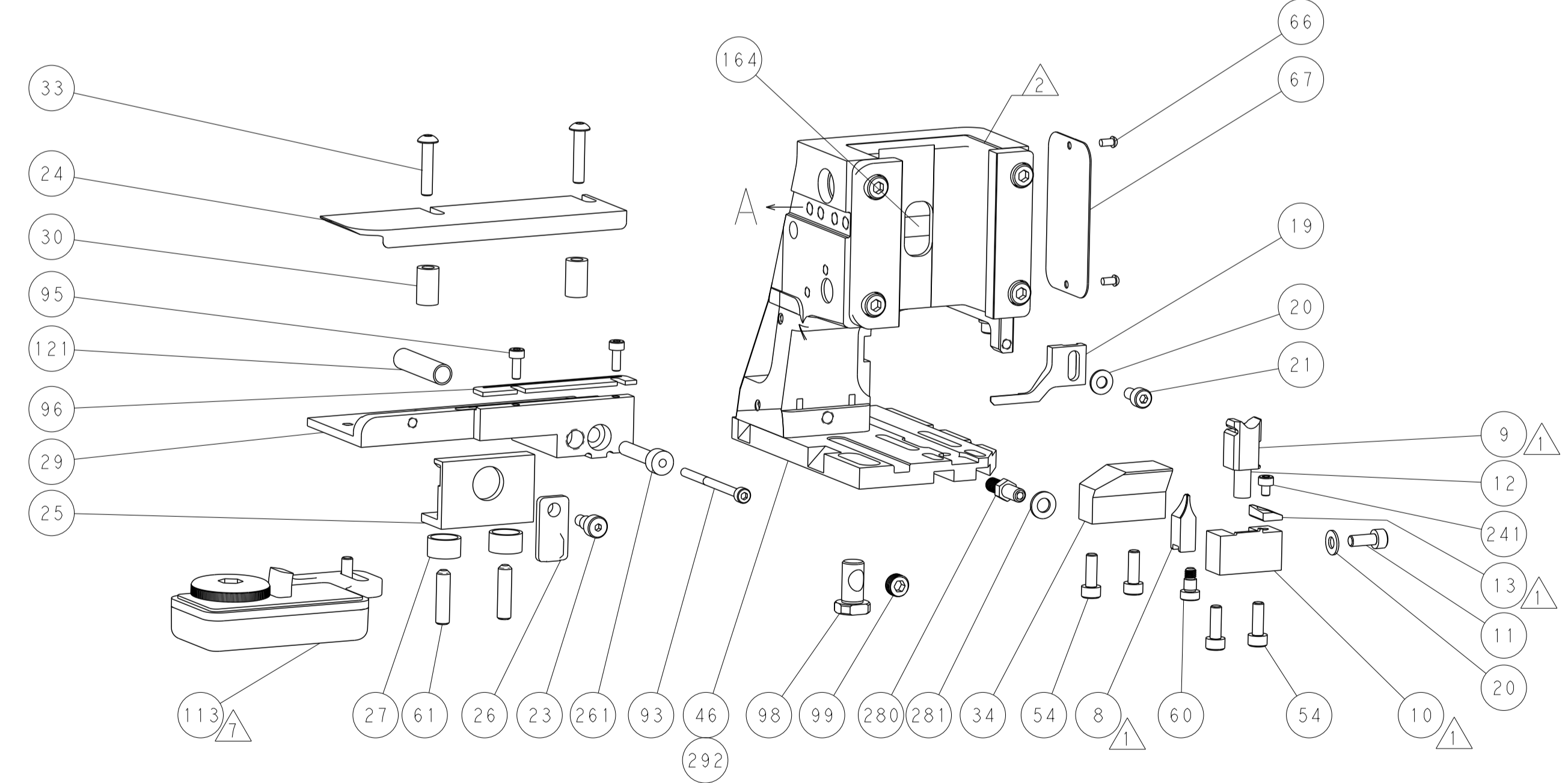
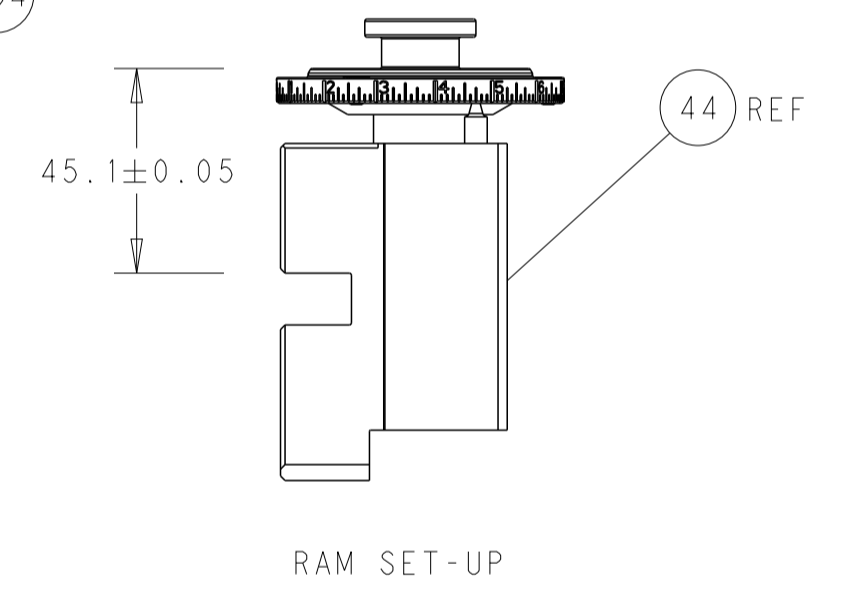
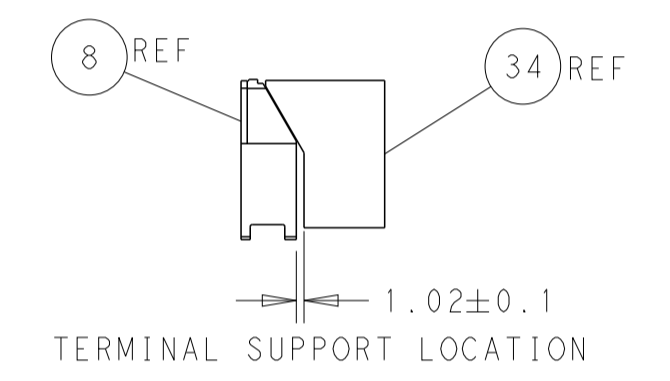
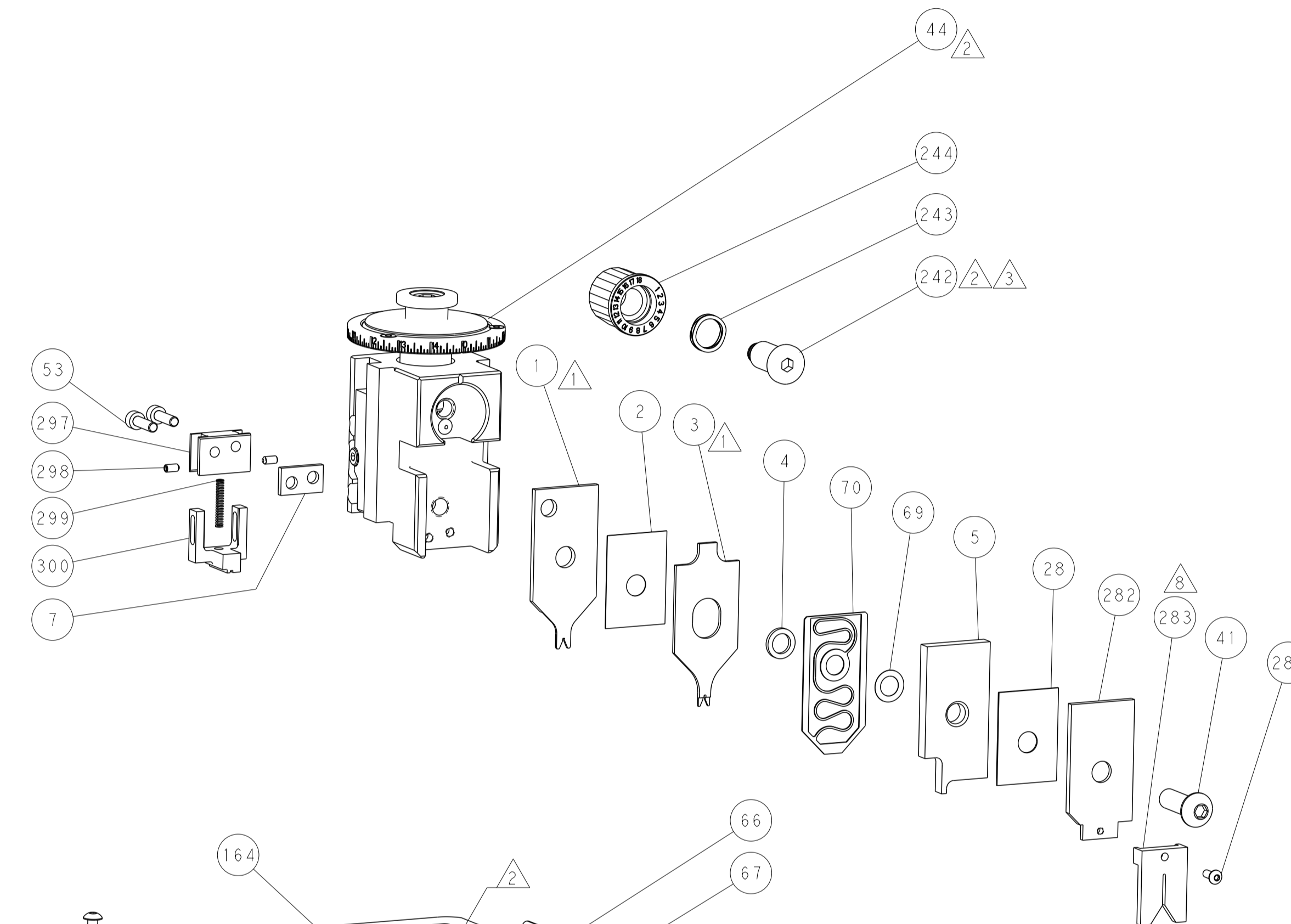
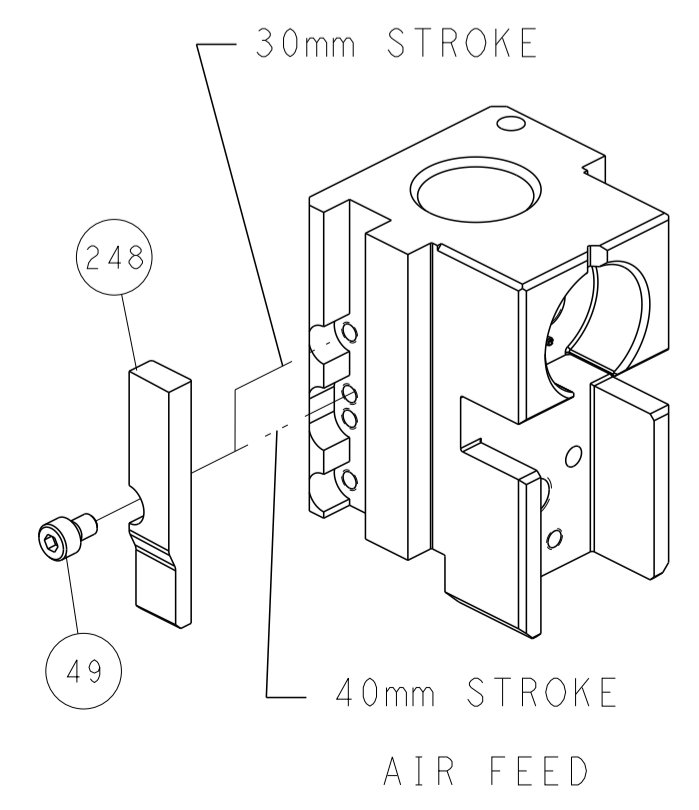


FEED SPRING SETTING POSITION (SHOWN FROM REAR SIDE)



DETAIL A

CAM POSITION



ATLANTIC VERSION
 Shown on sheets 1 of 4 & 2 of 4
 (Pacific version shown on sheets 3 of 4 & 4 of 4)

DIMENSIONS:		TOLERANCES UNLESS OTHERWISE SPECIFIED:		DWG: C. Topper 21MAR2017		TE Connectivity	
mm	0 PLC ±	1 PLC ±	2 PLC ±	3 PLC ±	4 PLC ±	Harrisburg, PA 17105-3608	
MATERIAL:		FINISH:		CHK: G. Bailey 21MAR2017		NAME: Ocean Side Feed Applicator	
				APVD: J. DeGrange 21MAR2017		SIZE: A1	
				PRODUCT SPEC:		CAGE CODE: 00779	
				APPLICATION SPEC:		DRAWING NO: 2836687	
				WEIGHT:		SCALE: 1:2	
				Customer Accessible Production Drawing		SHEET 2 OF 4	
						REV: G1	

PART NUMBER	REVISION	DESCRIPTION	FEED TYPE
2-2836687-2	G	FINE CRIMP HEIGHT ADJUST	PNEUMATIC
7-2836687-7	A	CRIMP TOOLING KIT	-

PACIFIC VERSION TERMINATOR
 INTERFACE ADAPTER



APPLICATOR DATA

CRIMP	SIZE	TYPE
WIRE	0.91 mm [.036]	F
INSUL	0.86 mm [.034]	F

APPLICATOR INSTRUCTIONS
 408-35042

TERMINAL DATA: HIROSE TERMINAL HIROSE CRIMP SPECIFICATION

TERMINAL NAME: RECEPTACLE

WIRE STRIP LENGTH	INSULATION DIAMETER RANGE
1.20-1.90 mm [.047-.075 IN]	Ø0.65-1.00 mm [.026-.039 IN]

TERMINAL APPLICATION SPECIFICATION TAD-5024-030

TERMINALS APPLIED 6, 7

TE TERMINAL	HIROSE TERMINAL	TE TERMINAL	HIROSE TERMINAL
286508-1	DF132630SCF	286508-2	DF132630SCFA
286508-3	DF13G2630SCFA		

WIRE SIZE	CRIMP HEIGHT mm [INCH]	CRIMP HEIGHT REFERENCE SETTING
26 AWG	0.50 +/- .02 [.020 +/- .001]	6.8
28 AWG	0.48 +/- .02 [.019 +/- .001]	7.0
30 AWG	0.47 +/- .02 [.019 +/- .001]	7.1



- 1 RECOMMENDED SPARE PARTS
- 2 REFER TO SUPPLIED INSTRUCTION SHEET FOR CLEANING, LUBRICATION AND STORAGE OF APPLICATOR.
- 3 APPLY PART NUMBER 2-23419-6 LOCTITE TO THREADS OF ITEM 242.
- 4 CRIMP HEIGHT REFERENCE SETTING WAS THE SETTING USED WHEN THE APPLICATOR WAS QUALIFIED AT THE FACTORY. ADJUSTMENT MAY BE NECESSARY WHEN RUNNING APPLICATOR IN THE FIELD.
- 5 UNLESS SPECIFIED OTHERWISE TORQUE VALUES SHALL BE USED PER DOCUMENT, 101-35000.
- 6 TERMINAL PITCH NOT COMPATIBLE WITH MECHANICAL FEED.
- 7 TERMINAL LUBRICANT IS RECOMMENDED.
- 8 PART OPTIONAL FOR BETTER LEADMAKER PERFORMANCE.

***WARNING**
 ON INSTALLATION, SET WIRE DISC TO CRIMP HEIGHT REFERENCE SETTING FOR LARGEST WIRE SIZE. CRIMP HEIGHT REFERENCE SETTINGS GREATER THAN THE VALUE SHOWN MAY CAUSE DAMAGE TO THE CRIMP TOOLING, REFER TO THE INSTRUCTION SHEET FOR PROPER SETUP AND ADJUSTMENTS.

PACIFIC VERSION
 Shown on sheets 3 of 4 & 4 of 4
 (Atlantic version shown on sheets 1 of 4 & 2 of 4)

LOC	DIST	REVISONS
A	66	
		DESCRIPTION
		DATE
		DWN
		APVD

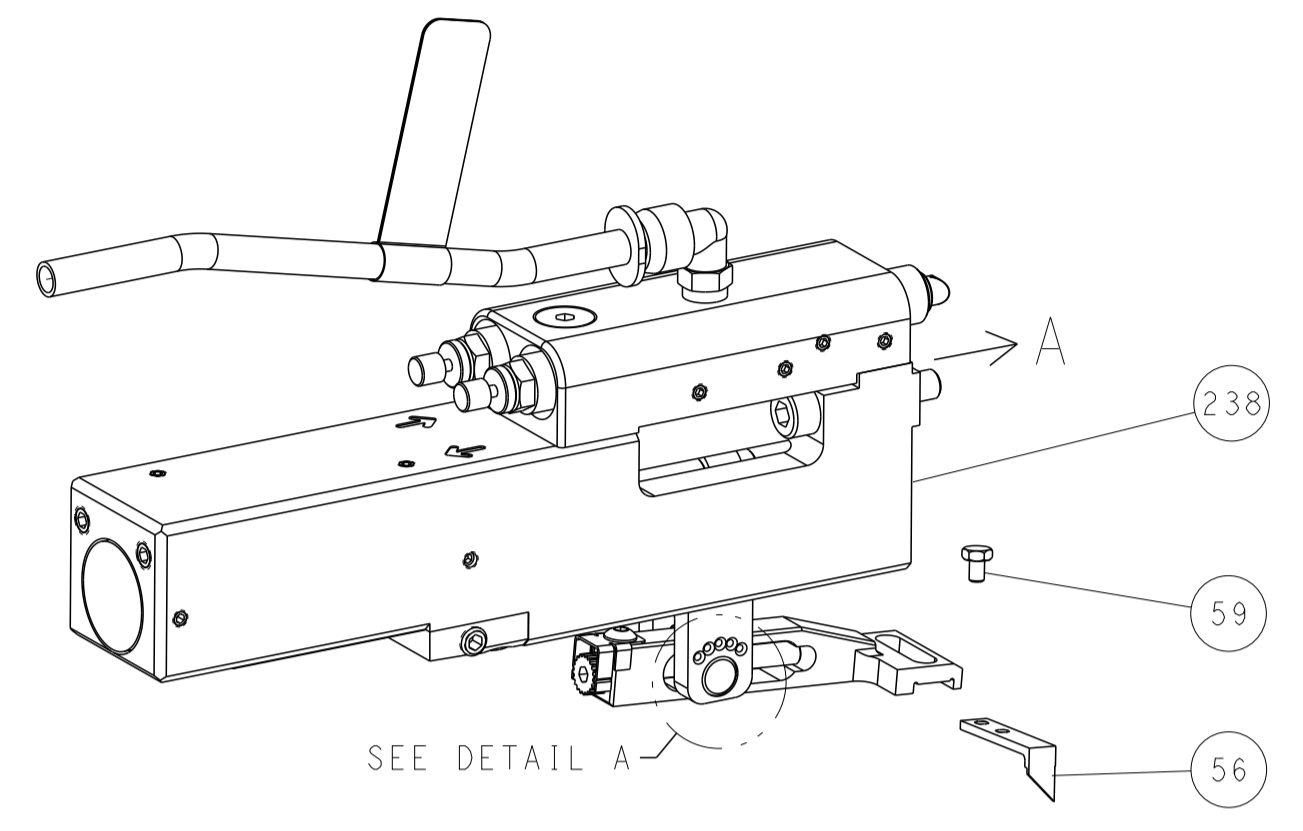
-	1	2-1803945-4	TONKER	300
-	1	22278-9	SPRING, COMPRESSION	299
-	2	4-18032-3	SCR, SET, FLT PNT, M3 X 6.0	298
-	1	1803944-1	SPACER, TONKER	297
-	1	2079383-1	SCR, BHSC, RoHS (M3 X 8)	284
-	1	1633289-4	STABILIZER	283
-	1	1803461-1	HOLDER, STABILIZER	282
-	1	1-18028-3	WASHER, FLAT, REG M5	281
-	1	1803196-1	STUD, ADJUSTMENT SCREW	280
-	1	2330046-1	RESIN COLLAR, FLANGED	261
-	1	2119082-5	CAM, SNAIL, INSULATION ADJUSTMENT	244
-	1	2079764-1	WASHER, WAVE SPRING, CREST-TO-CREST	243
-	1	2119083-1	RETAINER, INSULATION DIAL	242
-	1	7-18023-7	SCR, SKT HD CAP M3 X 4.0	241
-	1	2844940-1	AIR FEED MODULE	238
-	REF	994970-2	COUNTER, MAGNETIC	164
-	1	2119641-2	FEED CAM, AIR FEED	151
-	1	2161425-1	SCREW, SHOULDER	144
-	4	2168083-9	SCR, SKT HD CAP, RoHS, M4 X 20	143
-	1	3-1803583-0	APPLICATOR BASIC ASSEMBLY, SF	141
-	1	1803516-1	RAM ASSEMBLY, SF PACIFIC	140
-	1	1-22281-6	SPRING, COMPRESSION	121
-	1	2119955-1	ASSY, LUBRICATOR, SIDE FEED	113
-	1	2844908-1	SCREW, LOCKING	99
-	1	2844907-1	POST, LOCKING	98
-	1	1-690438-0	FRONT STRIP GUIDE	96
-	2	2168083-1	SCR, SKT HD CAP, RoHS, M3 X 8.0	95
-	1	1-994962-8	SCR, SKT HD CAP M3 X 45.0	93
-	1	1803607-3	DOCUMENTATION PACKAGE	71
-	1	2-2119791-2	DEPRESSOR, WIRE	70
-	1	2119943-1	WASHER, SPACER	69
-	1	2119740-1	TAG IDENTIFICATION	67
-	2	2168078-1	SCREW, DRIVE, RH, RoHS, 2 x .188	66
-	2	2-18032-5	SCR, SET, FLT PNT, M5 X 20.0	61
-	1	5-18022-5	SCR, HEX HD CAP, M4 X 6.0	59
-	1	1338685-1	PAWL, FEED	56
-	2	2-2168083-5	SCR, SKT HD CAP, RoHS, M4 X 14	53
-	1	18023-9	SCR, SKT HD CAP M4 X 6.0	49
-	1	1803602-1	SCR, BHSC, RoHS (M8 X 25)	41
-	1	6-1752356-8	SUPPORT, TERMINAL	34
-	2	2079383-5	SCR, BHSC, RoHS (M4 X 20)	33
-	2	2-2844962-3	SPACER, CYLINDRICAL, STRIP GUIDE	30
-	1	2-2844938-0	PLATE, STRIP GUIDE	29
-	1	455888-5	SPACER, CRIMPER	28
-	2	1-22284-0	SPRING, COMPRESSION	27
-	1	356835-1	LEVER, DRAG RELEASE	26
-	1	240792-1	DRAG, TERMINAL	25
-	1	1320928-2	STRIP GUIDE	24
-	1	980371-4	SCR, SKT HD SHLDR 5.0 DIA X 6.0	23
-	1	2168083-2	SCR, SKT HD CAP, RoHS, M4 X 8.0	21
-	2	1-18028-2	WASHER, FLAT, REG M4	20
-	1	1803213-1	STRIPPER	19
-	1	2119806-1	INSERT, SHEAR	13
-	1	3-22280-3	SPRING, COMPRESSION	12
-	1	1-2168083-0	SCR, SKT HD CAP, RoHS, M4 X 10	11
-	1	2119805-1	SHEAR HOLDER, FRONT	10
-	1	1-1803095-4	FLOATING SHEAR, FRONT	9
-	1	1803395-5	ANVIL, COMBINATION	8
-	1	240641-9	SPACER	7
-	-	-	-	6
-	1	2-2119757-7	DEPRESSOR, SHEAR	5
-	1	1-238011-3	BLOCK, CRIMPER SPACER	4
-	1	1803493-2	CRIMPER, INSULATION F PREMIUM	3
-	1	455888-2	SPACER, CRIMPER	2
-	1	1-1803407-6	CRIMPER, WIRE PREMIUM	1

DIMENSIONS:		TOLERANCES UNLESS OTHERWISE SPECIFIED:		DWN: C. Topper 21MAR2017	
mm	0 PLC ±	1 PLC ±	2 PLC ±	3 PLC ±	4 PLC ±
MATERIAL:		FINISH:		CHK: G. Bailey 21MAR2017	
				APVD: J. DeGrange 21MAR2017	
APPLICATOR SPEC:		APPLICATOR SPEC:		NAME: Ocean Side Feed Applicator	
SIZE: A1		CAGE CODE: 00779		DRAWING NO: C=2836687	
WEIGHT:		SCALE: 1:2		SHEET 3 OF 4	
Customer Accessible Production Drawing		REV: G1			

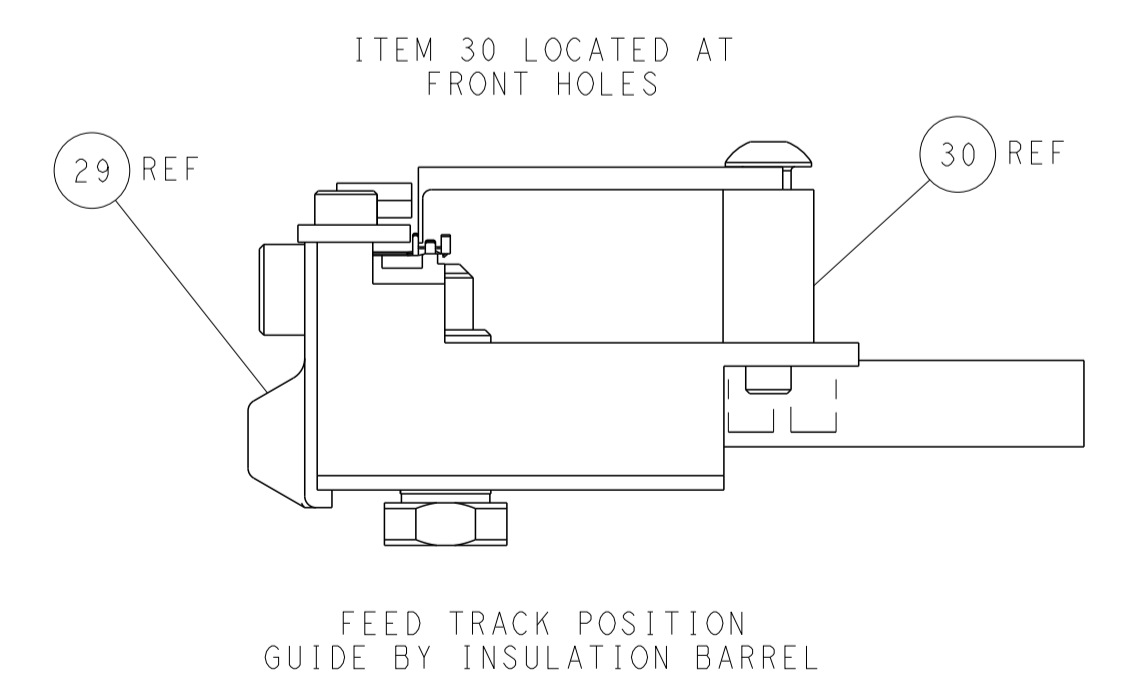
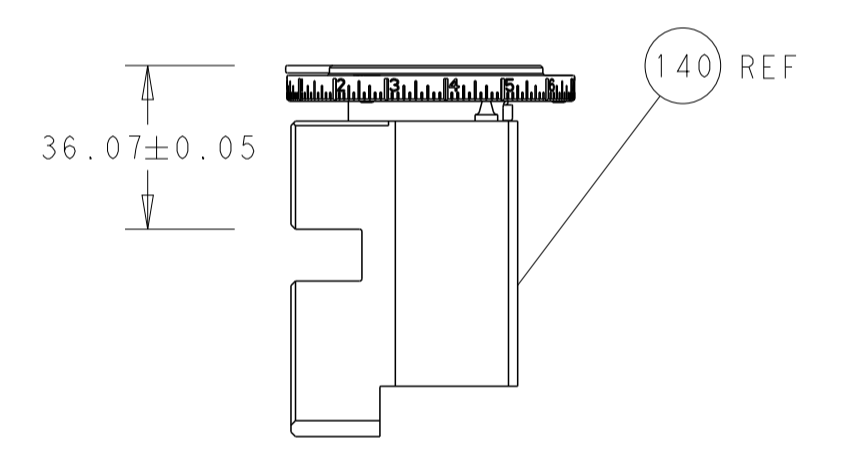
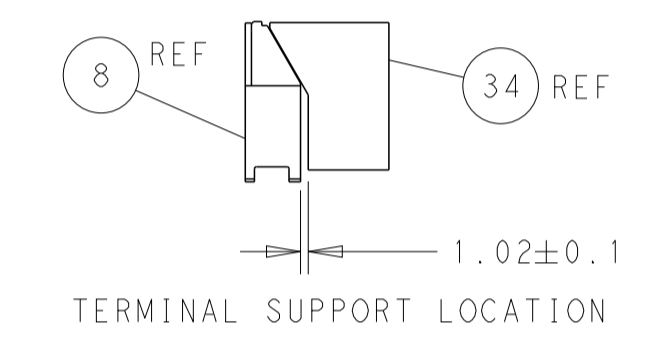
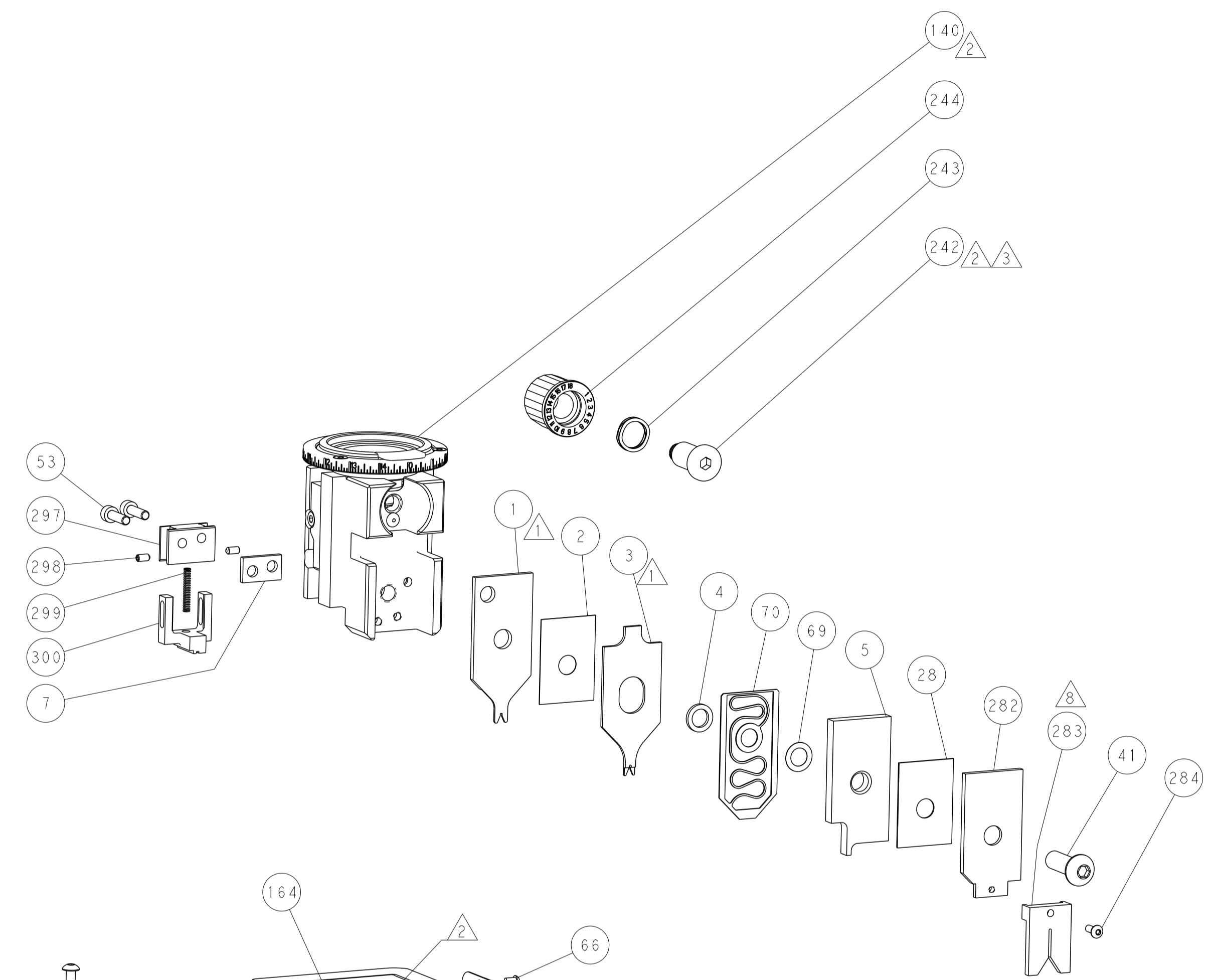
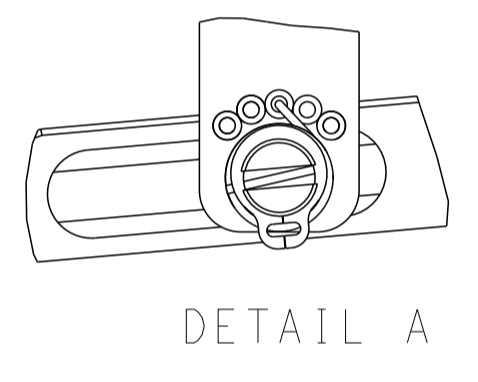
LOC	DIST	REVISIONS					
		P	LTN	DESCRIPTION	DATE	DWN	APVD
A	66	-	-	SEE SHEET 1	-	-	-

FEED TYPE

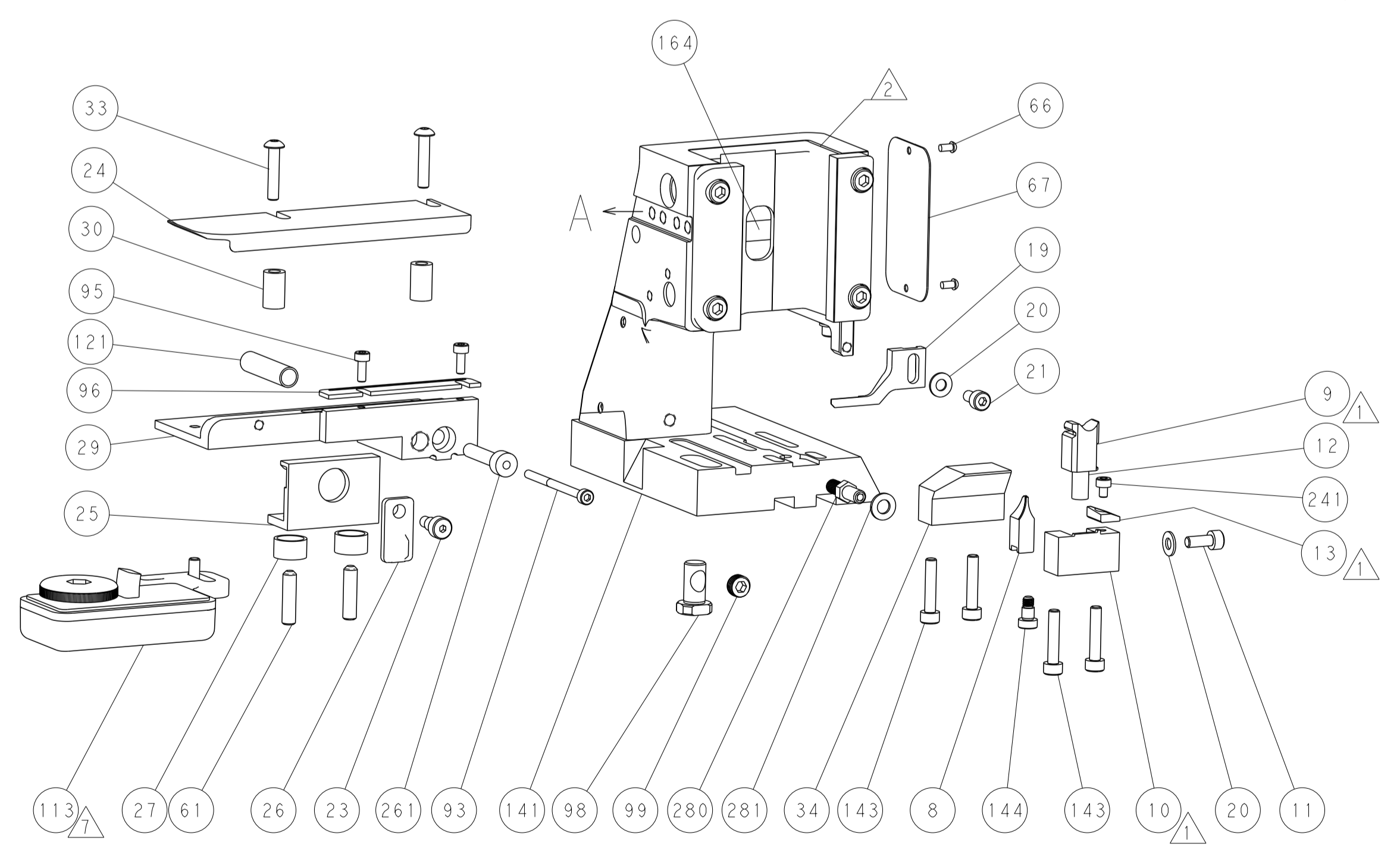
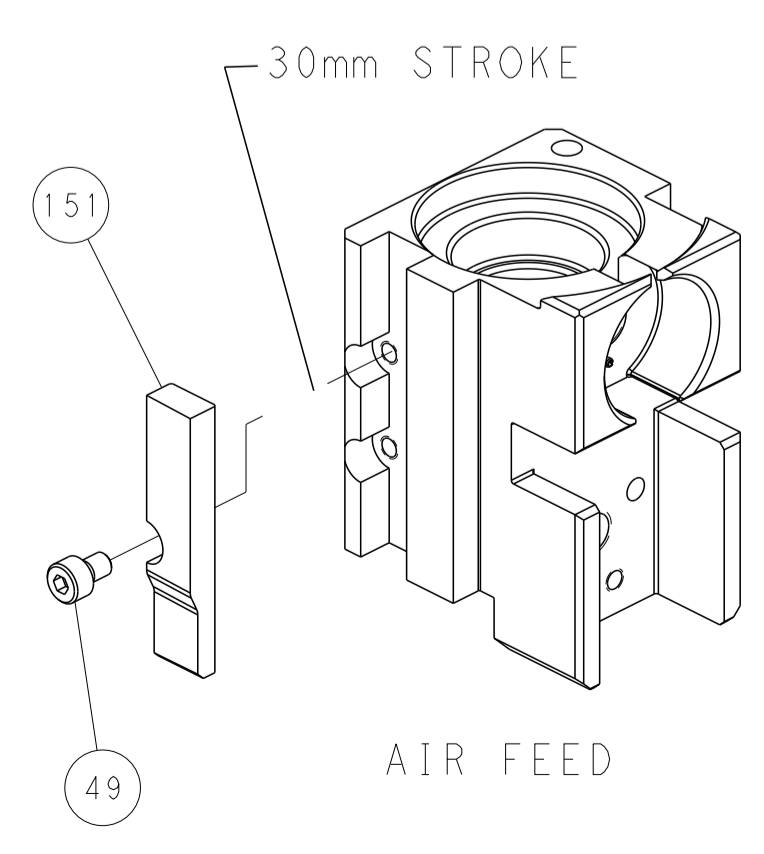
PNEUMATIC



FEED SPRING SETTING POSITION (SHOWN FROM REAR SIDE)



CAM POSITION



PACIFIC VERSION
 Shown on sheets 3 of 4 & 4 of 4
 (Atlantic version shown on sheets 1 of 4 & 2 of 4)

<small>THIS DRAWING IS UNPUBLISHED. RELEASED FOR PUBLICATION. ALL RIGHTS RESERVED. © 2000 BY TYCO ELECTRONICS CORPORATION. THIS DRAWING IS THE PROPERTY OF TYCO ELECTRONICS CORPORATION AND IS NOT TO BE REPRODUCED OR TRANSMITTED IN ANY FORM OR BY ANY MEANS, ELECTRONIC OR MECHANICAL, INCLUDING PHOTOCOPYING, RECORDING, OR BY ANY INFORMATION STORAGE AND RETRIEVAL SYSTEM, WITHOUT THE WRITTEN PERMISSION OF TYCO ELECTRONICS CORPORATION.</small>		DWN: C. Topper 21MAR2017 CHK: G. Bailey 21MAR2017 APVD: J. DeGrange 21MAR2017	TE Connectivity Harrisburg, PA 17105-3608
DIMENSIONS: mm TOLERANCES UNLESS OTHERWISE SPECIFIED: 0 PLC ± 1 PLC ± 2 PLC ± 3 PLC ± 4 PLC ± ANGLES ± FINISH	NAME: Ocean Side Feed Applicator APPLICATION SPEC: - SIZE: A1 CAGE CODE: 00779 DRAWING NO: 2836687 SCALE: 1:2 SHEET: 4 OF 4 REV: G1	WEIGHT: - MATERIAL: -	RESTRICTED TO: -