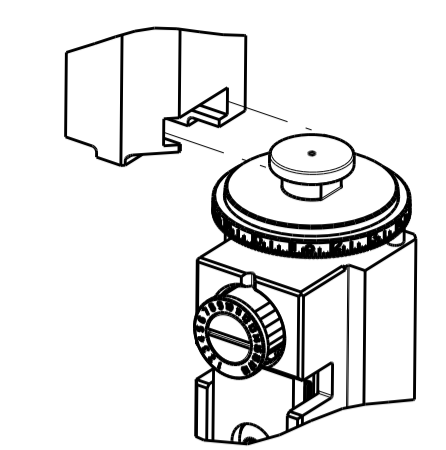


PART NUMBER	REVISION	DESCRIPTION	FEED TYPE
2836642-2	C	FINE CRIMP HEIGHT ADJUST	PNEUMATIC
7-2836642-2	C	PNEUMATIC AND CRIMP TOOLING KIT	PNEUMATIC
7-2836642-7	A	CRIMP TOOLING KIT	-

ATLANTIC VERSION TERMINATOR INTERFACE ADAPTER

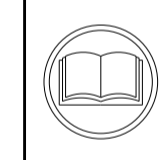


APPLICATOR DATA		
CRIMP	SIZE	TYPE
WIRE	3.05 mm [.120]	F
INSUL	4.06 mm [.160]	F

APPLICATOR INSTRUCTIONS
408-35042

TERMINAL DATA: INSINKERATOR TERMINAL		TE CRIMP SPECIFICATION	
TERMINAL NAME: TERMINAL, MALE BLADE			
WIRE STRIP LENGTH	INSULATION DIAMETER RANGE		
5.59-6.35 mm [.220-.250 IN]	Ø2.29-3.05 mm [.090-.120 IN]		
TERMINAL APPLICATION SPECIFICATION	NONE		
TERMINALS APPLIED			
TE TERMINAL	INSINKERATOR TERMINAL	TE TERMINAL	INSINKERATOR TERMINAL
2303728-1	3495		

WIRE SIZE	CRIMP HEIGHT mm [INCH]	CRIMP HEIGHT REFERENCE SETTING
16 AWG	2.40 +/- 0.05 [.094 +/- .002]	5.0
18 AWG	2.27 +/- 0.05 [.089 +/- .002]	6.2



- RECOMMENDED SPARE PARTS
- REFER TO SUPPLIED INSTRUCTION SHEET FOR CLEANING, LUBRICATION AND STORAGE OF APPLICATOR.
- APPLY PART NUMBER 2-23419-6 LOCTITE TO THREADS OF ITEM 242.
- CRIMP HEIGHT REFERENCE SETTING WAS THE SETTING USED WHEN THE APPLICATOR WAS QUALIFIED AT THE FACTORY. ADJUSTMENT MAY BE NECESSARY WHEN RUNNING APPLICATOR IN THE FIELD.
- TERMINAL LUBRICANT IS RECOMMENDED.
- 6. UNLESS SPECIFIED OTHERWISE TORQUE VALUES SHALL BE USED PER DOCUMENT, 101-35000.
- TERMINAL PITCH NOT COMPATIBLE WITH MECHANICAL FEED.

***WARNING**
ON INSTALLATION, SET WIRE DISC TO CRIMP HEIGHT REFERENCE SETTING FOR LARGEST WIRE SIZE. CRIMP HEIGHT REFERENCE SETTINGS GREATER THAN THE VALUE SHOWN MAY CAUSE DAMAGE TO THE CRIMP TOOLING. REFER TO THE INSTRUCTION SHEET FOR PROPER SETUP AND ADJUSTMENTS.

ATLANTIC VERSION
Shown on sheets 1 of 4 & 2 of 4
(Pacific version shown on sheets 3 of 4 & 4 of 4)

LOC	DIST	REVISIONS					
A	66	P	LTN	DESCRIPTION	DATE	OWN	APVD
		A		RELEASED	13APR2017	TB	GB
		B		ECR-19-010014	26JUN2019	TB	TE
		C		ECR-19-011881	29JUL2019	FJ	TE

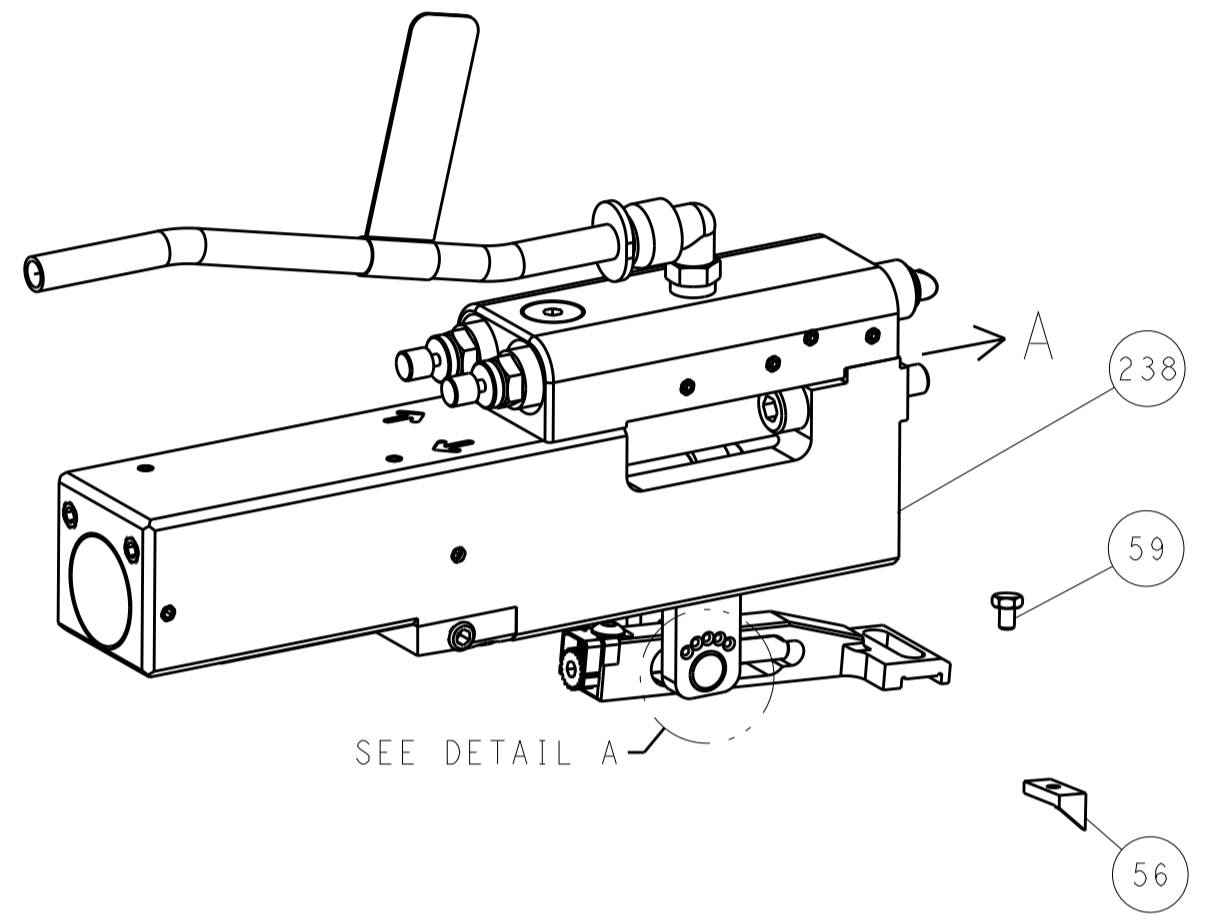
-	2	2	1-1655316-1	SCR, SKT HD CAP, M3 X 14.0	283
-	2	2	2168083-3	SCR, SKT HD CAP, RoHS, M4 X 12.0	282
-	1	1	18032-1	SCR, SET, FLT PNT, M3 X 5.0	281
-	1	1	2844961-2	SPACER, AIR BLAST	280
-	1	1	23238-1	INSERT, COUPLING	278
-	1	1	2030758-3	TUBING, POLYURETHANE	277
-	1	1	18030-2	NUT, HEX, REG M4	276
-	1	1	986220-3	CLAMP, CABLE, BLACK	275
-	1	1	2217068-1	BRACKET, AIR BLAST	273
-	1	1	2-1583859-2	BLADE, SLUG	264
-	1	1	2119641-1	FEED CAM, AIR FEED	248
-	1	1	2119082-4	CAM, SNAIL, INSULATION ADJUSTMENT	244
-	1	1	2079764-1	WASHER, WAVE SPRING, CREST-TO-CREST	243
-	1	1	2119083-1	RETAINER, INSULATION DIAL	242
-	1	1	2844940-1	AIR FEED MODULE	238
-	1	1	1-18028-0	WASHER, FLAT, REG M8	192
-	REF	REF	994970-2	COUNTER, MAGNETIC	164
-	1	1	2-2168083-5	SCR, SKT HD CAP, RoHS, M4 X 14	144
-	1	1	2168083-8	SCR, SKT HD CAP, RoHS, M4 X 16	143
-	1	1	1-22281-8	SPRING, COMPRESSION	121
-	1	1	2119955-1	ASSY, LUBRICATOR, SIDE FEED	113
-	1	1	2844908-1	SCREW, LOCKING	99
-	1	1	2844907-1	POST, LOCKING	98
-	1	1	1-693855-0	FRONT STRIP GUIDE	96
-	2	2	2168083-1	SCR, SKT HD CAP, RoHS, M3 X 8.0	95
-	1	1	2168083-6	SCR, SKT HD CAP, RoHS, M5 X 65	93
-	1	1	455888-5	SPACER, CRIMPER	82
-	1	1	1803607-3	DOCUMENTATION PACKAGE	71
-	1	1	2119791-5	DEPRESSOR, WIRE	70
-	1	1	2119740-1	TAG, IDENTIFICATION	67
-	2	2	2168078-1	SCREW, DRIVE, RH, RoHS, 2 x .188	66
-	2	2	2-18032-5	SCR, SET, FLT PNT, M5 X 20.0	61
-	1	1	2168083-2	SCR, SKT HD CAP, RoHS, M4 X 8.0	60
-	1	1	5-18022-5	SCR, HEX HD CAP, M4 X 6.0	59
-	1	1	1338683-1	FEED PAWL	56
-	2	2	2168083-9	SCR, SKT HD CAP, RoHS, M4 X 20	53
-	1	1	1-811242-0	BUMPER, HOLD DOWN	51
-	1	1	1-1583893-3	HOLDER, SLUG BLADE	50
-	1	1	18023-9	SCR, SKT HD CAP M4 X 6.0	49
-	1	1	1803583-9	APPLICATOR BASIC ASSEMBLY, SF	46
-	1	1	1803515-1	RAM ASSEMBLY, SF ATLANTIC	44
-	1	1	1803602-1	SCR, BHSC, RoHS (M8 X 25)	41
-	1	1	2-2305692-8	PLATE, REAR STRIP GUIDE	29
-	2	2	22283-1	SPRING, COMPRESSION	27
-	1	1	356835-1	LEVER, DRAG RELEASE	26
-	1	1	2-690754-4	DRAG, SPECIAL	25
-	1	1	2-189124-5	GUIDE, FRONT STRIP	24
-	1	1	980371-4	SCR, SKT HD SHLDR 5.0 DIA X 6.0	23
-	1	1	2168083-2	SCR, SKT HD CAP, RoHS, M4 X 8.0	21
-	2	2	1-18028-2	WASHER, FLAT, REG M4	20
-	1	1	1-2119533-0	STRIPPER, SIDE FEED	19
-	1	1	1-1752737-0	PLATE, REAR SHEAR	15
-	-	-	-	-	10
-	-	-	-	-	9
-	-	-	-	-	7
-	-	-	-	-	6
-	-	-	-	-	5
-	1	1	6-238011-4	BLOCK, CRIMPER SPACER	4
-	1	2	1-1803223-6	CRIMPER, INSULATION F PREMIUM	3
-	-	-	-	-	2
-	1	2	1-2-456409-0	CRIMPER, WIRE .120 "F" PREMIUM	1
-	77-72	-2	PART NO	DESCRIPTION	ITEM NO

<small>THE DRAWING IS CONTROLLED DOCUMENT AND IS THE PROPERTY OF STC CONNECTIVITY. IT IS SUBJECT TO CHANGE AND TO BE CONTROLLED BY THE ISSUING ORGANIZATION. SHOULD BE CONTACTED FOR THE LATEST REVISION.</small>		DWN: B. WEAVER 04MAR2017 CHK: T. ELBIN 04MAR2017 APVD: T. ELBIN 04MAR2017	TE Connectivity Harrisburg, PA 17105-3608
DIMENSIONS: mm 		TOLERANCES UNLESS OTHERWISE SPECIFIED: 0 PLC ± 1 PLC ± 2 PLC ± 3 PLC ± 4 PLC ± ANGLES ± FINISH ±	NAME: Ocean Side Feed Applicator SIZE: A1 CAGE CODE: 00779 DRAWING NO: 2836642 RESTRICTED TO: - SCALE: 1:2 SHEET: 1 of 4 REV: C
MATERIAL: -		WEIGHT: -	Customer Accessible Production Drawing

LOC		DIST		REVISIONS			
A	66	P	LTM	DESCRIPTION	DATE	DWN	APVD
		-		SEE SHEET 1	-	-	-

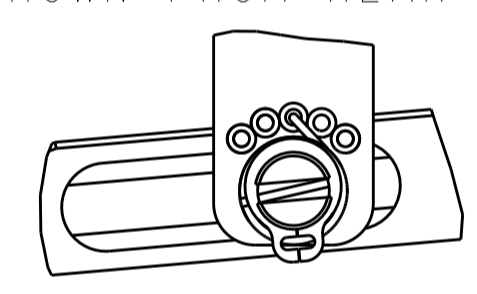
FEED TYPE

PNEUMATIC

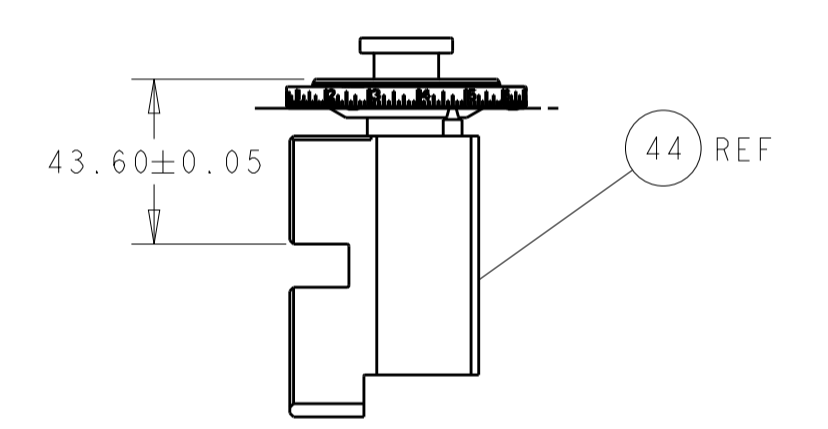
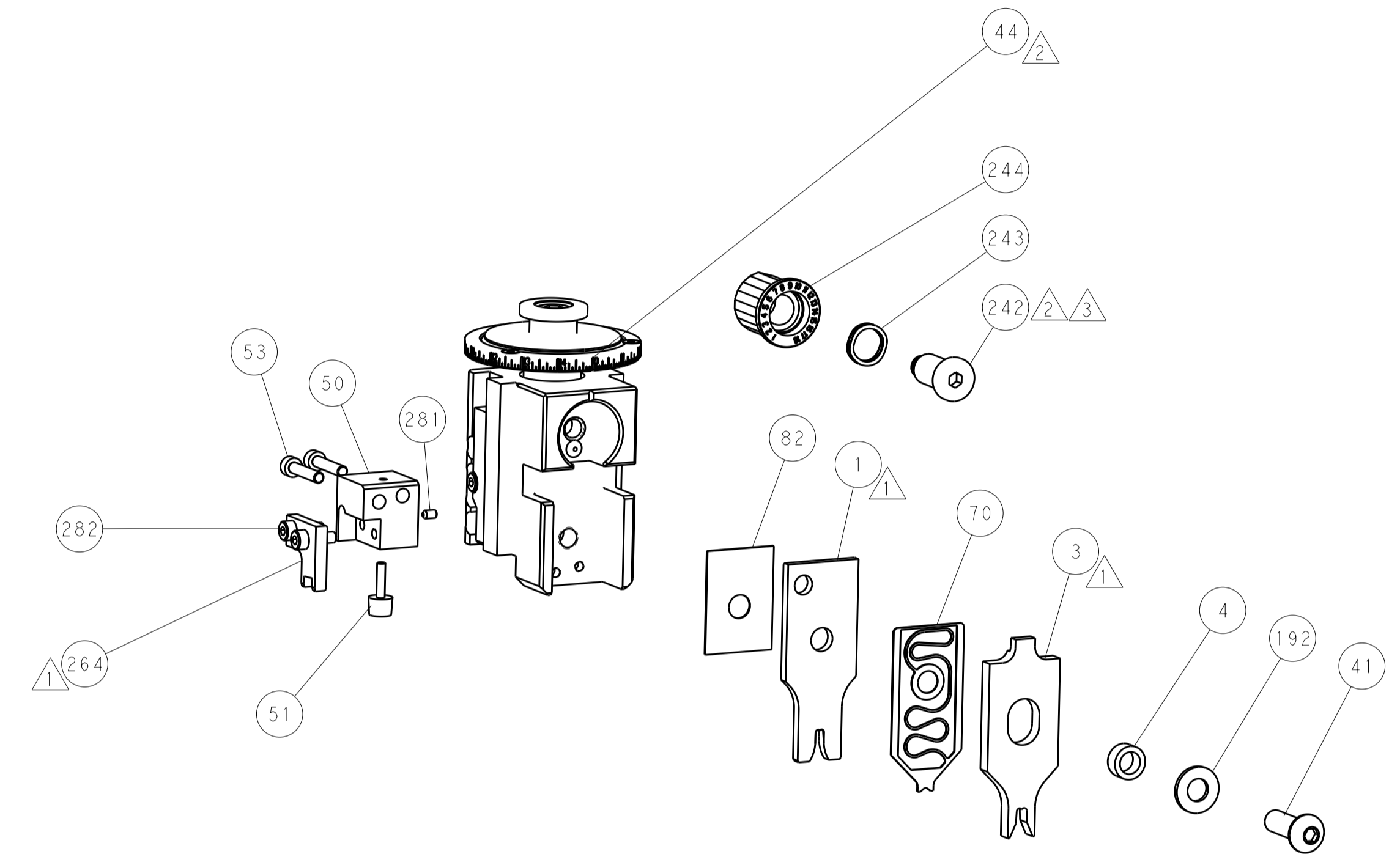


SEE DETAIL A

FEED SPRING SETTING POSITION (SHOWN FROM REAR SIDE)

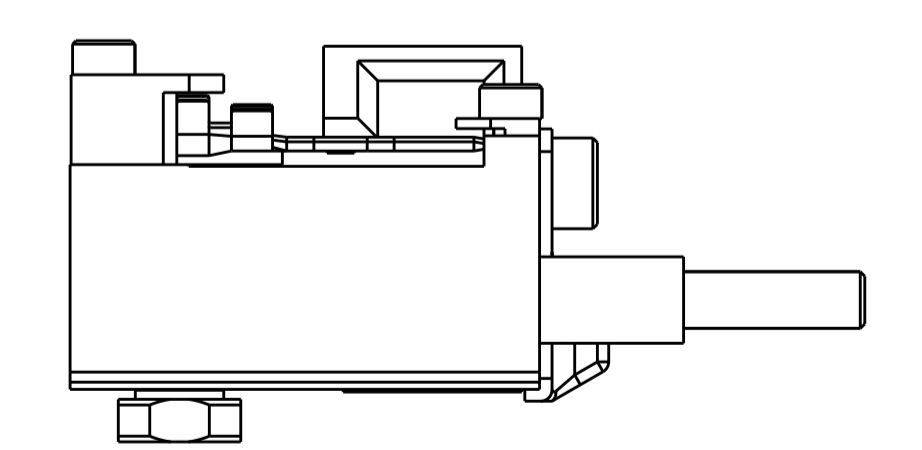
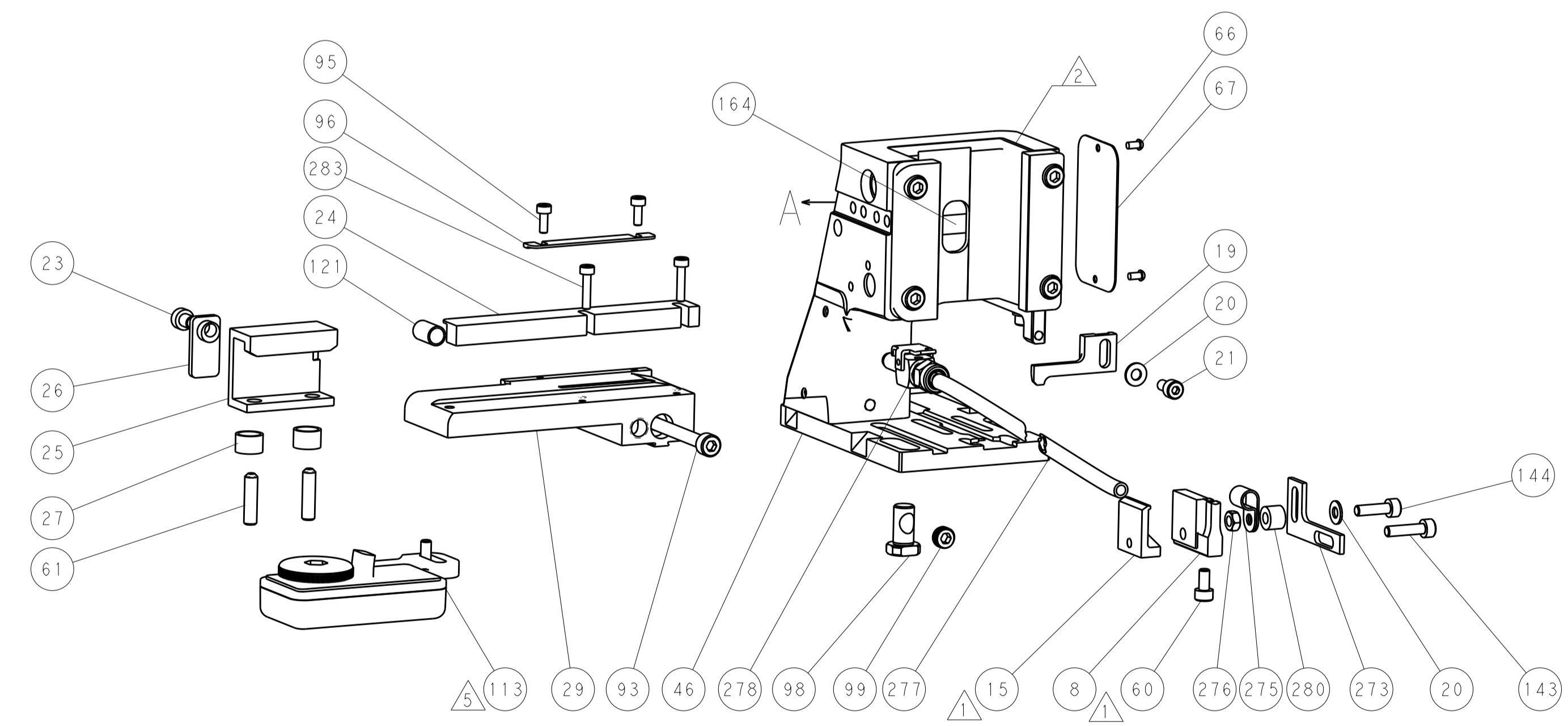
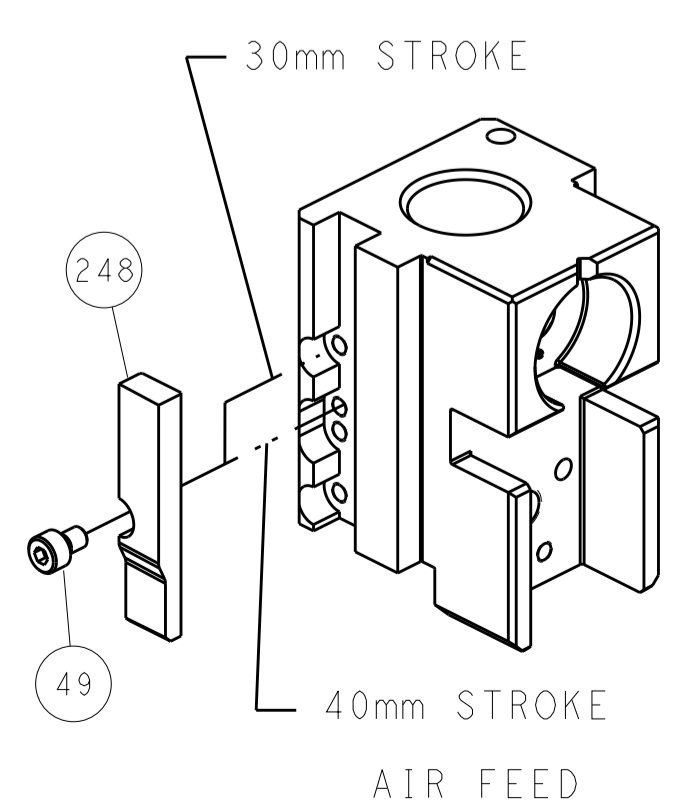


DETAIL A



RAM SET-UP

CAM POSITION



FEED TRACK POSITION GUIDE BY INSULATION BARREL

ATLANTIC VERSION
 Shown on sheets 1 of 4 & 2 of 4
 (Pacific version shown on sheets 3 of 4 & 4 of 4)

DIMENSIONS:		TOLERANCES UNLESS OTHERWISE SPECIFIED:		DWN B. WEAVER 04MAR2017		TE Connectivity	
mm	0 PLC ±	1 PLC ±	2 PLC ±	3 PLC ±	4 PLC ±	Harrisburg, PA 17105-3608	
	ANGLES ±			CHK T. ELBIN 04MAR2017		NAME Ocean Side Feed Applicator	
MATERIAL		FINISH		APVD T. ELBIN 04MAR2017		PRODUCT SPEC	
				APPLICATION SPEC		SIZE CAGE CODE DRAWING NO RESTRICTED TO	
				WEIGHT		A1 00779 C=2836642	
				Customer Accessible Production Drawing		SCALE 1:2 SHEET 2 OF 4 REV C	

8	7	6	5	4	3	2	1
THIS DRAWING IS UNPUBLISHED.		RELEASED FOR PUBLICATION		2017			
COPYRIGHT 2017 BY TYCO ELECTRONICS CORPORATION. ALL RIGHTS RESERVED.							
PART NUMBER	REVISION	DESCRIPTION	FEED TYPE				
2-2836642-2	C	FINE CRIMP HEIGHT ADJUST	PNEUMATIC				
7-2836642-7	A	CRIMP TOOLING KIT	-				

PACIFIC VERSION TERMINATOR
INTERFACE ADAPTER



APPLICATOR DATA		
CRIMP	SIZE	TYPE
WIRE	3.05 mm [.120]	F
INSUL	4.06 mm [.160]	F
APPLICATOR INSTRUCTIONS 408-35042		

TERMINAL DATA: INSINKERATOR TERMINAL		TE CRIMP SPECIFICATION	
TERMINAL NAME: TERMINAL, MALE BLADE			
WIRE STRIP LENGTH		INSULATION DIAMETER RANGE	
5.59-6.35 mm [.220-.250 IN]		∅2.29-3.05 mm [.090-.120 IN]	
TERMINAL APPLICATION SPECIFICATION	NONE		
TERMINALS APPLIED			
TE TERMINAL	INSINKERATOR TERMINAL	TE TERMINAL	INSINKERATOR TERMINAL
2303728-1	3495		

WIRE SIZE	CRIMP HEIGHT mm [INCH]	CRIMP HEIGHT REFERENCE SETTING
16 AWG	2.40 +/- 0.05 [.094 +/- .002]	5.0
18 AWG	2.27 +/- 0.05 [.089 +/- .002]	6.2



***WARNING**
ON INSTALLATION, SET WIRE DISC TO CRIMP HEIGHT REFERENCE SETTING FOR LARGEST WIRE SIZE. CRIMP HEIGHT REFERENCE SETTINGS GREATER THAN THE VALUE SHOWN MAY CAUSE DAMAGE TO THE CRIMP TOOLING. REFER TO THE INSTRUCTION SHEET FOR PROPER SETUP AND ADJUSTMENTS.

- RECOMMENDED SPARE PARTS
- REFER TO SUPPLIED INSTRUCTION SHEET FOR CLEANING, LUBRICATION AND STORAGE OF APPLICATOR.
- APPLY PART NUMBER 2-23419-6 LOCTITE TO THREADS OF ITEM 242.
- CRIMP HEIGHT REFERENCE SETTING WAS THE SETTING USED WHEN THE APPLICATOR WAS QUALIFIED AT THE FACTORY. ADJUSTMENT MAY BE NECESSARY WHEN RUNNING APPLICATOR IN THE FIELD.
- TERMINAL LUBRICANT IS RECOMMENDED.
- 6. UNLESS SPECIFIED OTHERWISE TORQUE VALUES SHALL BE USED PER DOCUMENT, 101-35000.
- TERMINAL PITCH NOT COMPATIBLE WITH MECHANICAL FEED.

LOC	DIST	REV	DATE	BY	APPV
A	66				

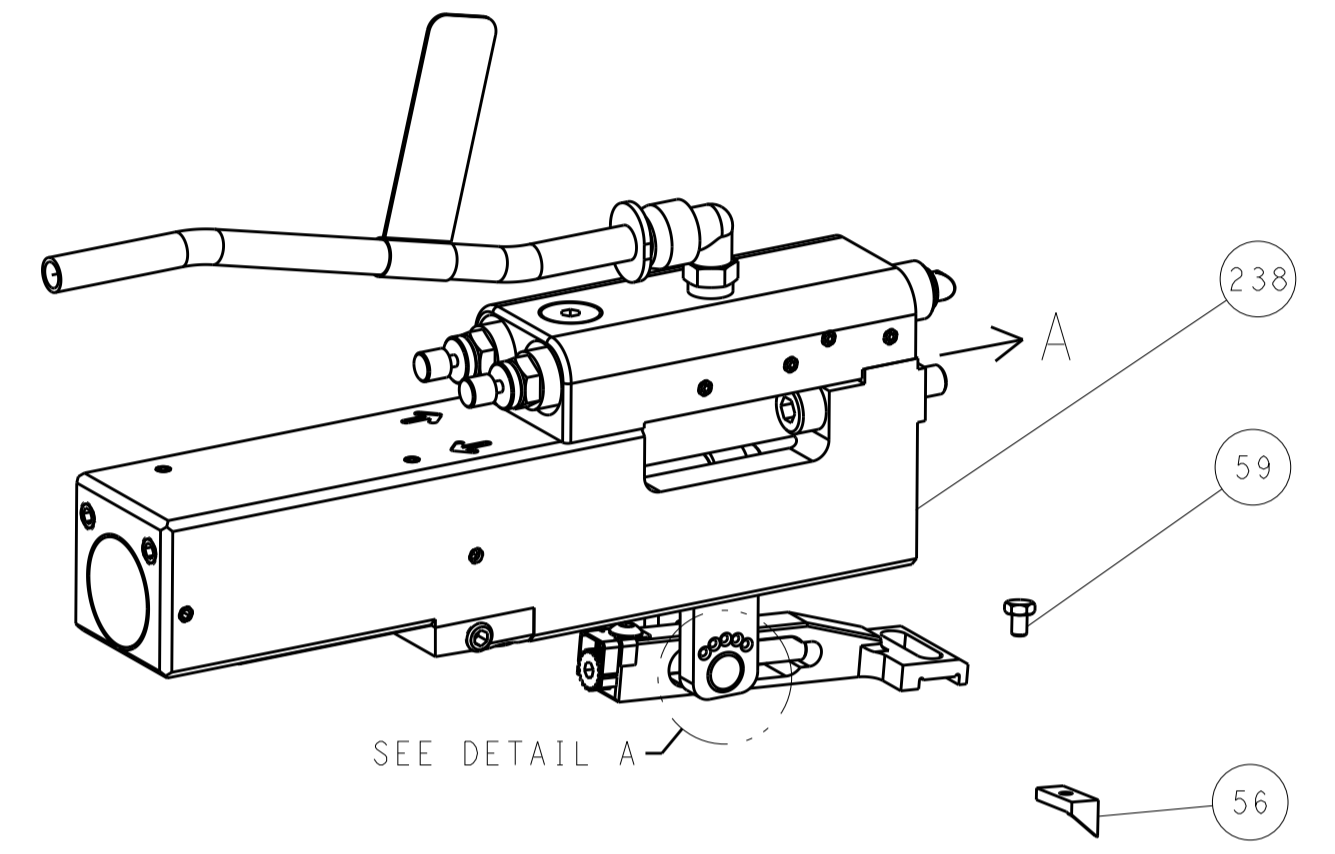
REVISIONS					
REV	DATE	DESCRIPTION	DATE	BY	APPV
-	2	1-1655316-1	SCR, SKT HD CAP, M3 X 14.0		283
-	2	2168083-3	SCR, SKT HD CAP, RoHS, M4 X 12.0		282
-	1	18032-1	SCR, SET, FLT PNT, M3 X 5.0		281
-	1	2844961-2	SPACER, AIR BLAST		280
-	1	23238-1	INSERT, COUPLING		278
-	1	2030758-3	TUBING, POLYURETHANE		277
-	1	18030-2	NUT, HEX, REG M4		276
-	1	986220-3	CLAMP, CABLE, BLACK		275
-	1	2217068-1	BRACKET, AIR BLAST		273
-	1	2-1583859-2	BLADE, SLUG		264
-	1	2119082-4	CAM, SNAIL, INSULATION ADJUSTMENT		244
-	1	2079764-1	WASHER, WAVE SPRING, CREST-TO-CREST		243
-	1	2119083-1	RETAINER, INSULATION DIAL		242
-	1	2844940-1	AIR FEED MODULE		238
-	1	1-18028-0	WASHER, FLAT, REG M8		192
-	REF	994970-2	COUNTER, MAGNETIC		164
-	1	2119641-2	FEED CAM, AIR FEED		151
-	1	2168083-8	SCR, SKT HD CAP, RoHS, M4 X 16		144
-	1	2-2168083-5	SCR, SKT HD CAP, RoHS, M4 X 14		144
-	1	2168083-8	SCR, SKT HD CAP, RoHS, M4 X 16		143
-	1	1-1803583-0	APPLICATOR BASIC ASSEMBLY, SF		141
-	1	1803516-1	RAM ASSEMBLY, SF PACIFIC		140
-	1	1-22281-8	SPRING, COMPRESSION		121
-	1	2119955-1	ASSY, LUBRICATOR, SIDE FEED		113
-	1	2844908-1	SCREW, LOCKING		99
-	1	2844907-1	POST, LOCKING		98
-	1	1-693855-0	FRONT STRIP GUIDE		96
-	2	2168083-1	SCR, SKT HD CAP, RoHS, M3 X 8.0		95
-	1	2168083-6	SCR, SKT HD CAP, RoHS, M5 X 65		93
-	1	455888-5	SPACER, CRIMPER		82
-	1	1803607-3	DOCUMENTATION PACKAGE		71
-	1	2119791-5	DEPRESSOR, WIRE		70
-	1	2119740-1	TAG, IDENTIFICATION		67
-	2	2168078-1	SCREW, DRIVE, RH, RoHS, 2 x .188		66
-	2	2-18032-5	SCR, SET, FLT PNT, M5 X 20.0		61
-	1	5-18022-5	SCR, HEX HD CAP, M4 X 6.0		59
-	1	1338683-1	FEED PAWL		56
-	2	2168083-9	SCR, SKT HD CAP, RoHS, M4 X 20		53
-	1	1-811242-0	BUMPER, HOLD DOWN		51
-	1	1-1583893-3	HOLDER, SLUG BLADE		50
-	1	18023-9	SCR, SKT HD CAP M4 X 6.0		49
-	1	1803602-1	SCR, BHSC, RoHS (M8 X 25)		41
-	1	2-2305692-8	PLATE, REAR STRIP GUIDE		29
-	2	22283-1	SPRING, COMPRESSION		27
-	1	356835-1	LEVER, DRAG RELEASE		26
-	1	2-690754-4	DRAG, SPECIAL		25
-	1	2-189124-5	GUIDE, FRONT STRIP		24
-	1	980371-4	SCR, SKT HD SHLDR 5.0 DIA X 6.0		23
-	1	2168083-2	SCR, SKT HD CAP, RoHS, M4 X 8.0		21
-	2	1-18028-2	WASHER, FLAT, REG M4		20
-	1	1-2119533-0	STRIPPER, SIDE FEED		19
-	1	1-1752737-0	PLATE, REAR SHEAR		15
-	-	-	-		10
-	-	-	-		9
-	1	1	2844939-2	ANVIL, SPECIAL COMBINATION	8
-	-	-	-		7
-	-	-	-		6
-	-	-	-		5
-	1	6-238011-4	BLOCK, CRIMPER SPACER		4
-	1	1-1803223-6	CRIMPER, INSULATION F PREMIUM		3
-	-	-	-		2
-	1	1	2-456409-0	CRIMPER, WIRE .120 "F" PREMIUM	1

PACIFIC VERSION
Shown on sheets 3 of 4 & 4 of 4
(Atlantic version shown on sheets 1 of 4 & 2 of 4)

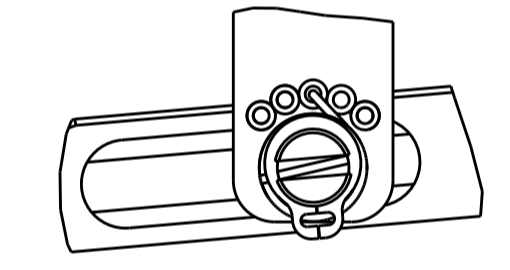
DIMENSIONS:		TOLERANCES UNLESS OTHERWISE SPECIFIED:		DWG: B. WEAVER 04MAR2017		TE Connectivity Harrisburg, PA 17105-3608	
mm	0 PLC ±	1 PLC ±	2 PLC ±	3 PLC ±	4 PLC ±	NAME: Ocean Side Feed Applicator	
MATERIAL:		FINISH:		APVD: T. ELBIN 04MAR2017		SIZE: CAGE CODE: DRAWING NO: 00779 C=2836642	
				WEIGHT:		RESTRICTED TO:	
				Customer Accessible Production Drawing		SCALE: 1:2 SHEET 3 OF 4 REV C	

LOC	DIST	REVISIONS					
A	66	P	LTH	DESCRIPTION	DATE	OWN	APVD
		-		SEE SHEET 1	-	-	-

FEED TYPE
PNEUMATIC

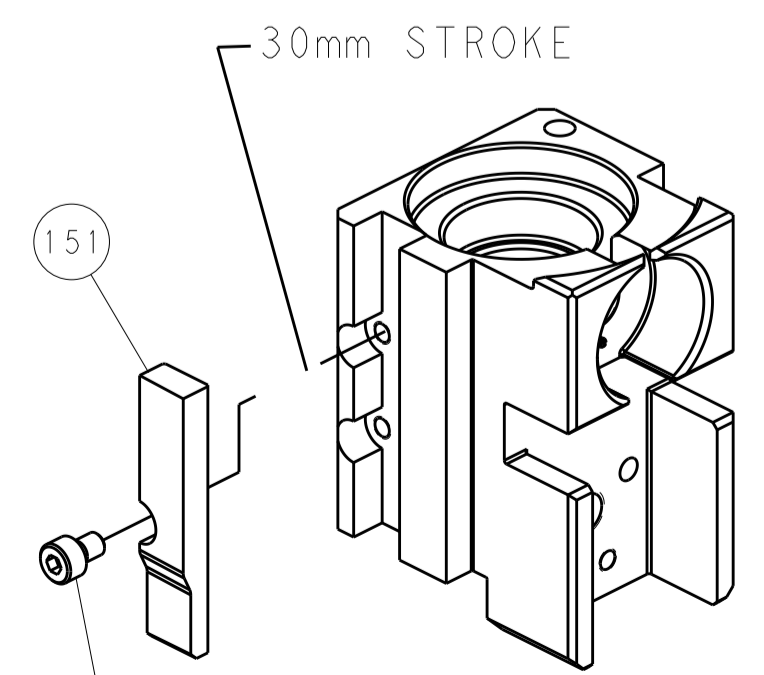


FEED SPRING SETTING POSITION
(SHOWN FROM REAR SIDE)

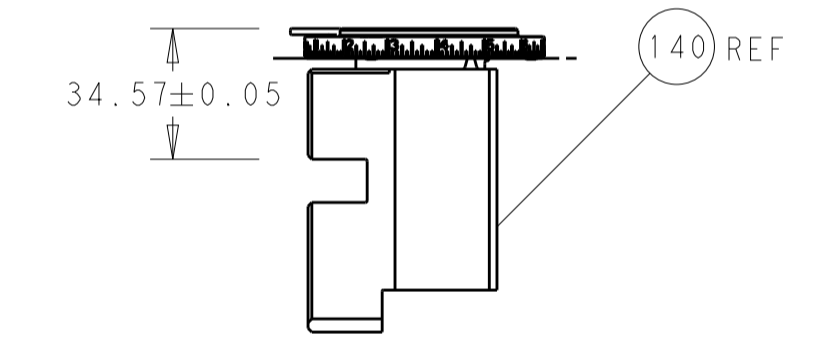
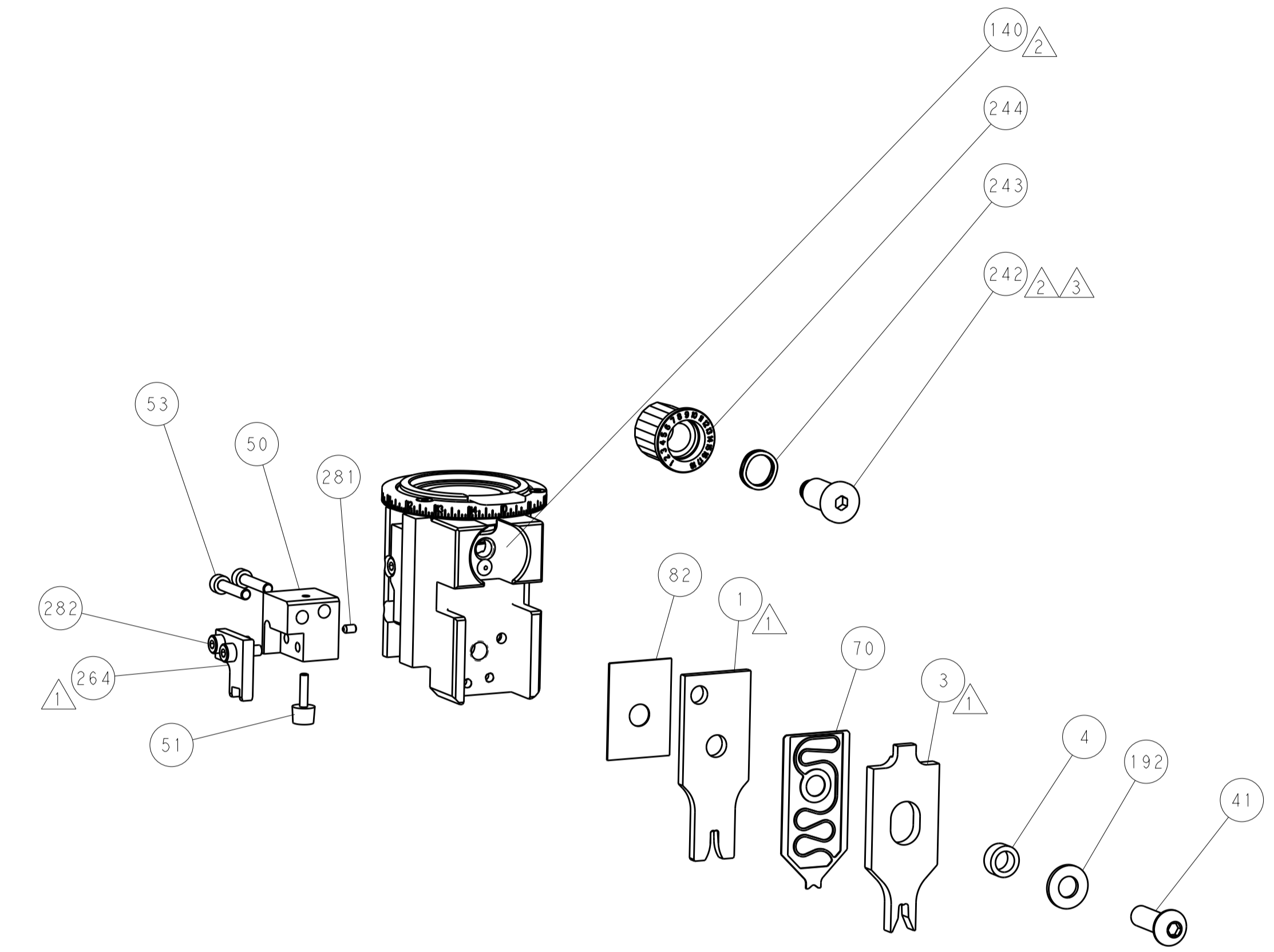


DETAIL A

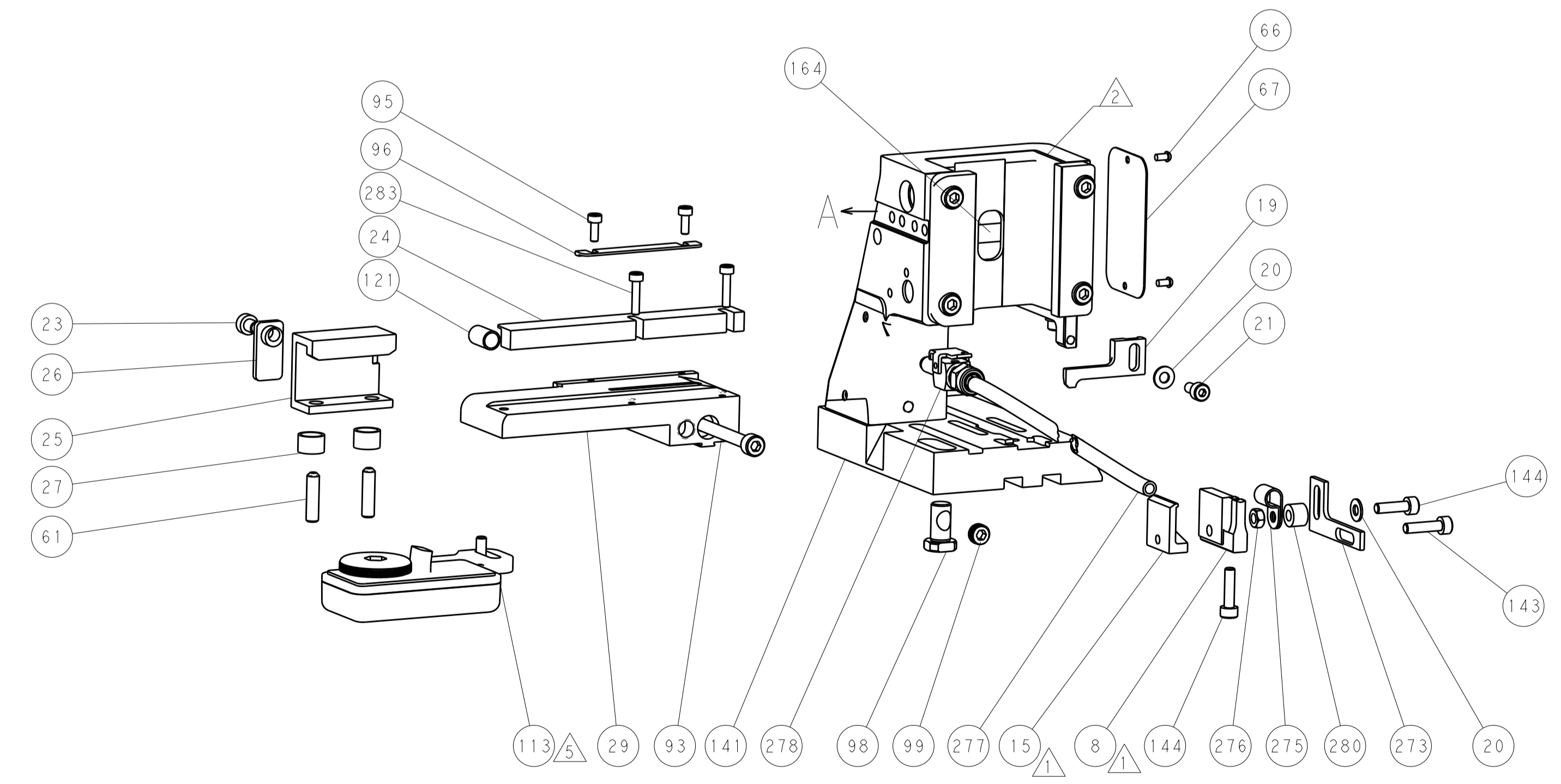
CAM POSITION



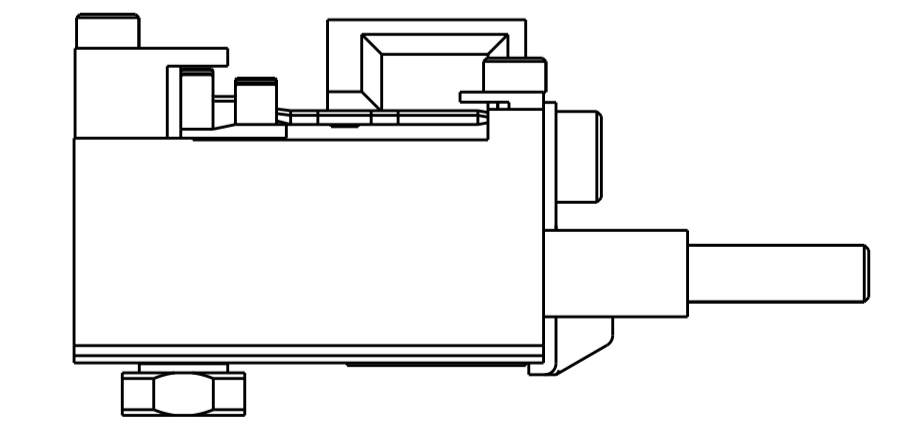
AIR FEED



RAM SET-UP



PACIFIC VERSION
 Shown on sheets 3 of 4 & 4 of 4
 (Atlantic version shown on sheets 1 of 4 & 2 of 4)



FEED TRACK POSITION
GUIDE BY INSULATION BARREL

<small>THIS DRAWING IS UNPUBLISHED. RELEASED FOR PUBLICATION 2017. IT IS THE PROPERTY OF TYCO ELECTRONICS CORPORATION. IT IS STRICTLY TO BE CONTROLLED AND NOT TO BE REPRODUCED OR DISSEMINATED WITHOUT THE WRITTEN PERMISSION OF TYCO ELECTRONICS CORPORATION.</small>		DWN: B. WEAVER 04MAR2017 CHK: T. ELBIN 04MAR2017 APVD: T. ELBIN 04MAR2017	TE Connectivity Harrisburg, PA 17105-3608
DIMENSIONS: mm TOLERANCES UNLESS OTHERWISE SPECIFIED: 0 PLC ± 1 PLC ± 2 PLC ± 3 PLC ± 4 PLC ± ANGLES ±		NAME: Ocean Side Feed Applicator PRODUCT SPEC: APPLICATION SPEC: WEIGHT: SCALE: 1:2	SIZE: A1 CAGE CODE: 00779 DRAWING NO: 2836642 SHEET 4 OF 4 REV C
MATERIAL:		RESTRICTED TO:	