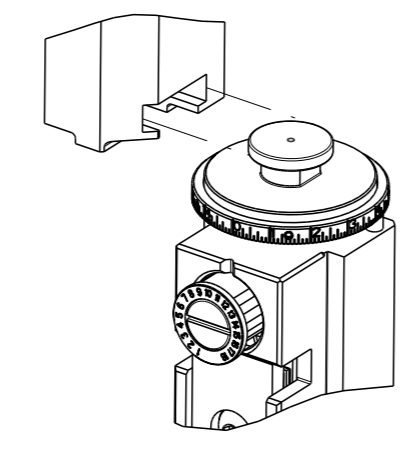


| PART NUMBER | REVISION | DESCRIPTION | FEED TYPE |
|-------------|----------|----------------------------------|------------|
| 2836450-1 | B | FINE CRIMP HEIGHT ADJUST | MECHANICAL |
| 2836450-2 | B | FINE CRIMP HEIGHT ADJUST | PNEUMATIC |
| 7-2836450-1 | B | MECHANICAL AND CRIMP TOOLING KIT | MECHANICAL |
| 7-2836450-2 | B | PNEUMATIC AND CRIMP TOOLING KIT | PNEUMATIC |
| 7-2836450-7 | A | CRIMP TOOLING KIT | - |

ATLANTIC VERSION TERMINATOR INTERFACE ADAPTER



| APPLICATOR DATA | | |
|-----------------|-----------------|------|
| CRIMP | SIZE | TYPE |
| WIRE | 3.30 mm [1.130] | F |
| INSUL | - | - |

APPLICATOR INSTRUCTIONS
408-35042

| TERMINAL DATA: TE TERMINAL | | TE CRIMP SPECIFICATION | |
|------------------------------------|-------------|---------------------------|-------------|
| TERMINAL NAME: SHUR PLUG .180 DIA | | | |
| WIRE STRIP LENGTH | | INSULATION DIAMETER RANGE | |
| 5.56-6.32 mm [2.19-.249 IN] | | ∅ | |
| TERMINAL APPLICATION SPECIFICATION | 114-2017 | - | - |
| TERMINALS APPLIED | | | |
| TE TERMINAL | TE TERMINAL | TE TERMINAL | TE TERMINAL |
| 42865-1 | 42865-3 | 63989-1 | |

| WIRE SIZE | CRIMP HEIGHT mm [INCH] | CRIMP HEIGHT REFERENCE SETTING |
|-----------|-----------------------------|--------------------------------|
| 10 AWG | 2.91+/-0.05 [1.115+/-0.002] | 3.0 |
| 12 AWG | 2.41+/-0.05 [0.95+/-0.002] | 9.2 |
| 14 AWG | 2.11+/-0.05 [0.83+/-0.002] | 12.3 |

- RECOMMENDED SPARE PARTS
- REFER TO SUPPLIED INSTRUCTION SHEET FOR CLEANING, LUBRICATION AND STORAGE OF APPLICATOR.
- CRIMP HEIGHT REFERENCE SETTING WAS THE SETTING USED WHEN THE APPLICATOR WAS QUALIFIED AT THE FACTORY. ADJUSTMENT MAY BE NECESSARY WHEN RUNNING APPLICATOR IN THE FIELD.
- TERMINAL LUBRICANT IS RECOMMENDED.
- MAXIMUM CMA FOR ALL WIRES 9600.
- 6. UNLESS SPECIFIED OTHERWISE TORQUE VALUES SHALL BE USED PER DOCUMENT, 101-35000.

***WARNING**
ON INSTALLATION, SET WIRE DISC TO CRIMP HEIGHT REFERENCE SETTING FOR LARGEST WIRE SIZE. CRIMP HEIGHT REFERENCE SETTINGS GREATER THAN THE VALUE SHOWN MAY CAUSE DAMAGE TO THE CRIMP TOOLING, REFER TO THE INSTRUCTION SHEET FOR PROPER SETUP AND ADJUSTMENTS.

ATLANTIC VERSION
Shown on sheets 1 of 4 & 2 of 4
(Pacific version shown on sheets 3 of 4 & 4 of 4)

| LOC | DIST | REVISIONS | | | |
|-----|------|-----------|-----------|-----|------|
| | | REV | DATE | BY | CHKD |
| A | 66 | A | 04JAN2016 | MZ | TE |
| | | A1 | 24APR2018 | KH | JDG |
| | | B | 16MAY2018 | MEH | JDG |

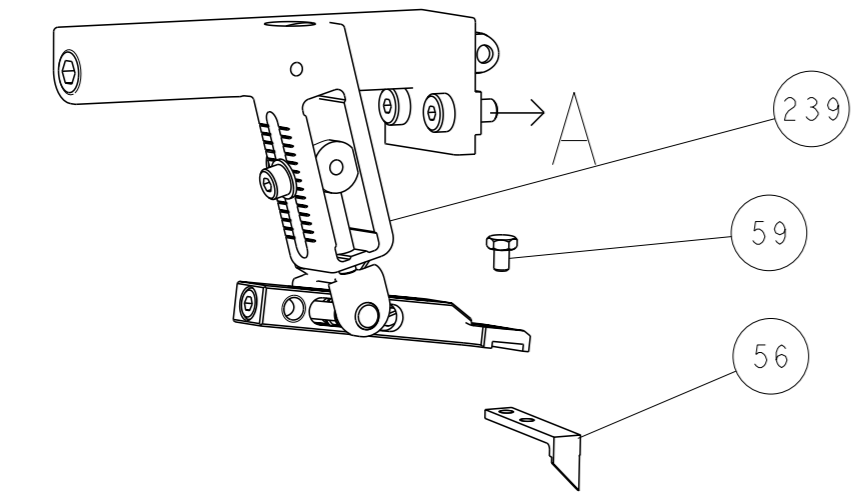
| | | | | | | | | |
|---|-----|-----|-----|-----|-------------|-------------------------------------|-----------------------|---|
| - | 1 | 1 | 1 | 1 | 5-18024-8 | SCR, BTN SKT HD CAP (M4 X 5.0) | 283 | |
| - | 1 | 1 | 1 | 1 | 2280441-1 | INSERT, SHEAR | 282 | |
| - | 2 | 2 | 2 | 2 | 2168083-1 | SCR, SKT HD CAP, RoHS, M3 X 8.0 | 269 | |
| - | 1 | 1 | 1 | 1 | 1633782-2 | FENCE | 267 | |
| - | 1 | - | 1 | - | 2119640-1 | PUSH ROD, AIR FEED | 250 | |
| - | 1 | - | 1 | - | 1803259-1 | BUSHING, FLANGED | 249 | |
| - | 1 | - | 1 | - | 2119641-1 | FEED CAM, AIR FEED | 248 | |
| - | 1 | 1 | 1 | 1 | 7-18023-7 | SCR, SKT HD CAP M3 X 4.0 | 241 | |
| - | - | 1 | - | 1 | 2119580-1 | MECHANICAL FEED ASSEMBLY | 239 | |
| - | 1 | - | 1 | - | 2063440-1 | AIR FEED MODULE | 238 | |
| - | 1 | 1 | 1 | 1 | 356885-4 | STOP, SHEAR | 237 | |
| - | 2 | - | 2 | - | 21045-3 | RING, RETAIN, EXTERN, 3/16 CRESCENT | 172 | |
| - | REF | REF | REF | REF | 994970-2 | COUNTER, MAGNETIC | 164 | |
| - | 1 | - | 1 | - | 240638-1 | SPRING, FEED FINGER | 163 | |
| - | 1 | - | 1 | - | 3-23627-7 | PIN, RETAIN, GRVD, 3/16 X .854 | 137 | |
| - | 1 | - | 1 | - | 2119799-1 | HOLDER, FEED FINGER, AF | 136 | |
| - | 1 | 1 | 1 | 1 | 2119955-1 | ASSY, LUBRICATOR, SIDE FEED | 113 | |
| - | 1 | 1 | 1 | 1 | 2844908-1 | SCREW, LOCKING | 99 | |
| - | 1 | 1 | 1 | 1 | 2844907-1 | POST, LOCKING | 98 | |
| - | 1 | 1 | 1 | 1 | 693855-1 | FRONT STRIP GUIDE | 96 | |
| - | 2 | 2 | 2 | 2 | 2168083-1 | SCR, SKT HD CAP, RoHS, M3 X 8.0 | 95 | |
| - | 1 | 1 | 1 | 1 | 455888-4 | SPACER, CRIMPER | 82 | |
| - | 1 | 1 | 1 | 1 | 1-240641-0 | SPACER | 81 | |
| - | 1 | 1 | 1 | 1 | 1803607-1 | DOCUMENTATION PACKAGE | 71 | |
| - | 1 | 1 | 1 | 1 | 2119740-1 | TAG, IDENTIFICATION | 67 | |
| - | 2 | 2 | 2 | 2 | 2168078-1 | SCREW, DRIVE, RH, RoHS, 2 x .188 | 66 | |
| - | 2 | 2 | 2 | 2 | 2-18032-5 | SCR, SET, FLT PNT, M5 X 20.0 | 61 | |
| - | 1 | 1 | 1 | 1 | 2168083-2 | SCR, SKT HD CAP, RoHS, M4 X 8.0 | 60 | |
| - | 1 | 1 | 1 | 1 | 5-18022-5 | SCR, HEX HD CAP, M4 X 6.0 | 59 | |
| - | 1 | 1 | 1 | 1 | 1338685-1 | PAWL, FEED | 56 | |
| - | 4 | 4 | 4 | 4 | 2168083-3 | SCR, SKT HD CAP, RoHS, M4 X 12.0 | 54 | |
| - | 2 | 2 | 2 | 2 | 2168083-9 | SCR, SKT HD CAP, RoHS, M4 X 20 | 53 | |
| - | 1 | 1 | 1 | 1 | 5018030-1 | NUT, HEX, REG, RoHS, M3 | 52 | |
| - | 1 | 1 | 1 | 1 | 811242-5 | BUMPER, HOLD DOWN | 51 | |
| - | 1 | 1 | 1 | 1 | 690753-2 | SPACER, TONKER | 50 | |
| - | 1 | 2 | 1 | 2 | 18023-9 | SCR, SKT HD CAP M4 X 6.0 | 49 | |
| - | - | 1 | - | 1 | 2119652-1 | FEED CAM, PRE FEED | 48 | |
| - | - | 1 | - | 1 | 2119653-1 | FEED CAM, POST FEED | 47 | |
| - | 1 | 1 | 1 | 1 | 1803583-9 | APPLICATOR BASIC ASSEMBLY, SF | 46 | |
| - | 1 | 1 | 1 | 1 | 1803515-1 | RAM ASSEMBLY, SF ATLANTIC | 44 | |
| - | 1 | 1 | 1 | 1 | 1803602-1 | SCR, BHSC, RoHS (M8 X 25) | 41 | |
| - | 2 | 2 | 2 | 2 | 2079383-5 | SCR, BHSC, RoHS (M4 X 20) | 33 | |
| - | 2 | 2 | 2 | 2 | 3-2844962-0 | SPACER, CYLINDRICAL, STRIP GUIDE | 30 | |
| - | 1 | 1 | 1 | 1 | 2844992-3 | ASSEMBLY, STRIP GUIDE | 29 | |
| - | 1 | 1 | 1 | 1 | 1-455888-0 | SPACER, CRIMPER | 28 | |
| - | 2 | 2 | 2 | 2 | 22283-1 | SPRING, COMPRESSION | 27 | |
| - | 1 | 1 | 1 | 1 | 356835-1 | LEVER, DRAG RELEASE | 26 | |
| - | 1 | 1 | 1 | 1 | 240792-5 | DRAG, TERMINAL | 25 | |
| - | 1 | 1 | 1 | 1 | 1320928-2 | STRIP GUIDE | 24 | |
| - | 1 | 1 | 1 | 1 | 980371-4 | SCR, SKT HD SHLDR 5.0 DIA X 6.0 | 23 | |
| - | 1 | 1 | 1 | 1 | 2168083-2 | SCR, SKT HD CAP, RoHS, M4 X 8.0 | 21 | |
| - | 2 | 2 | 2 | 2 | 1-18028-2 | WASHER, FLAT, REG M4 | 20 | |
| - | 1 | 1 | 1 | 1 | 2119533-2 | STRIPPER, SIDE FEED | 19 | |
| - | 1 | 1 | 1 | 1 | 1-690463-6 | FLOATING SHEAR, REAR | 17 | |
| - | 2 | 2 | 2 | 2 | 1-2168083-1 | SCR, SKT HD CAP, RoHS, M3 X 6 | 16 | |
| - | 1 | 1 | 1 | 1 | 690691-2 | PLATE, REAR SHEAR | 15 | |
| - | 1 | 1 | 1 | 1 | 2119862-1 | SHEAR HOLDER, REAR | 14 | |
| - | 1 | 1 | 1 | 1 | 2119806-1 | INSERT, SHEAR | 13 | |
| - | 2 | 2 | 2 | 2 | 3-22280-3 | SPRING, COMPRESSION | 12 | |
| - | 1 | 1 | 1 | 1 | 1-356885-4 | STOP, SHEAR | 11 | |
| - | 1 | 1 | 1 | 1 | 2119805-1 | SHEAR HOLDER, FRONT | 10 | |
| - | 1 | 1 | 1 | 1 | 1803095-5 | FLOATING SHEAR, FRONT | 9 | |
| - | 1 | 2 | 2 | 1 | 1 | 8-1633933-4 | ANVIL, COMBINATION | 8 |
| - | - | - | - | - | - | - | 7 | |
| - | 1 | 1 | 1 | 1 | 1-690468-7 | DEPRESSOR SHEAR, REAR | 6 | |
| - | 1 | 1 | 1 | 1 | 1-2119757-2 | DEPRESSOR, SHEAR | 5 | |
| - | - | - | - | - | - | - | 4 | |
| - | - | - | - | - | - | - | 3 | |
| - | - | - | - | - | - | - | 2 | |
| - | 1 | 2 | 2 | 1 | 1 | 456410-7 | CRIMPER, WIRE PREMIUM | 1 |

| DIMENSIONS: | | TOLERANCES UNLESS OTHERWISE SPECIFIED: | | OWN | CHK | APVD | DATE | NAME | SIZE | CAGE CODE | DRAWING NO | RESTRICTED TO |
|-------------|--------|--|--|--------|----------|----------|-----------|----------------------------|------|-----------|------------|---------------|
| mm | 0 PLC | ± | | J. HOU | L. ZHANG | L. ZHANG | 19SEP2016 | Ocean Side Feed Applicator | A1 | 00779 | 2836450 | - |
| | 1 PLC | ± | | | | | | | | | | |
| | 2 PLC | ± | | | | | | | | | | |
| | 3 PLC | ± | | | | | | | | | | |
| | 4 PLC | ± | | | | | | | | | | |
| | ANGLES | ± | | | | | | | | | | |
| MATERIAL | FINISH | ± | | | | | | | | | | |

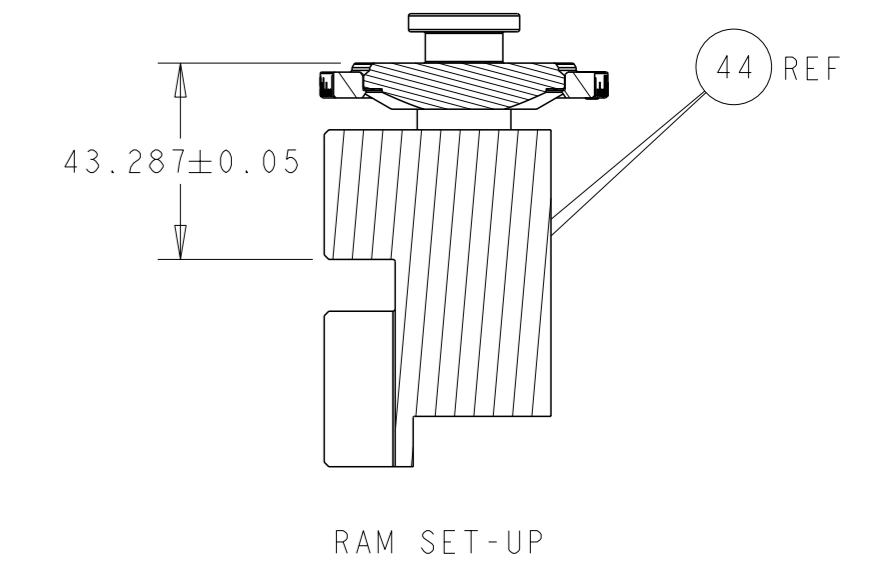
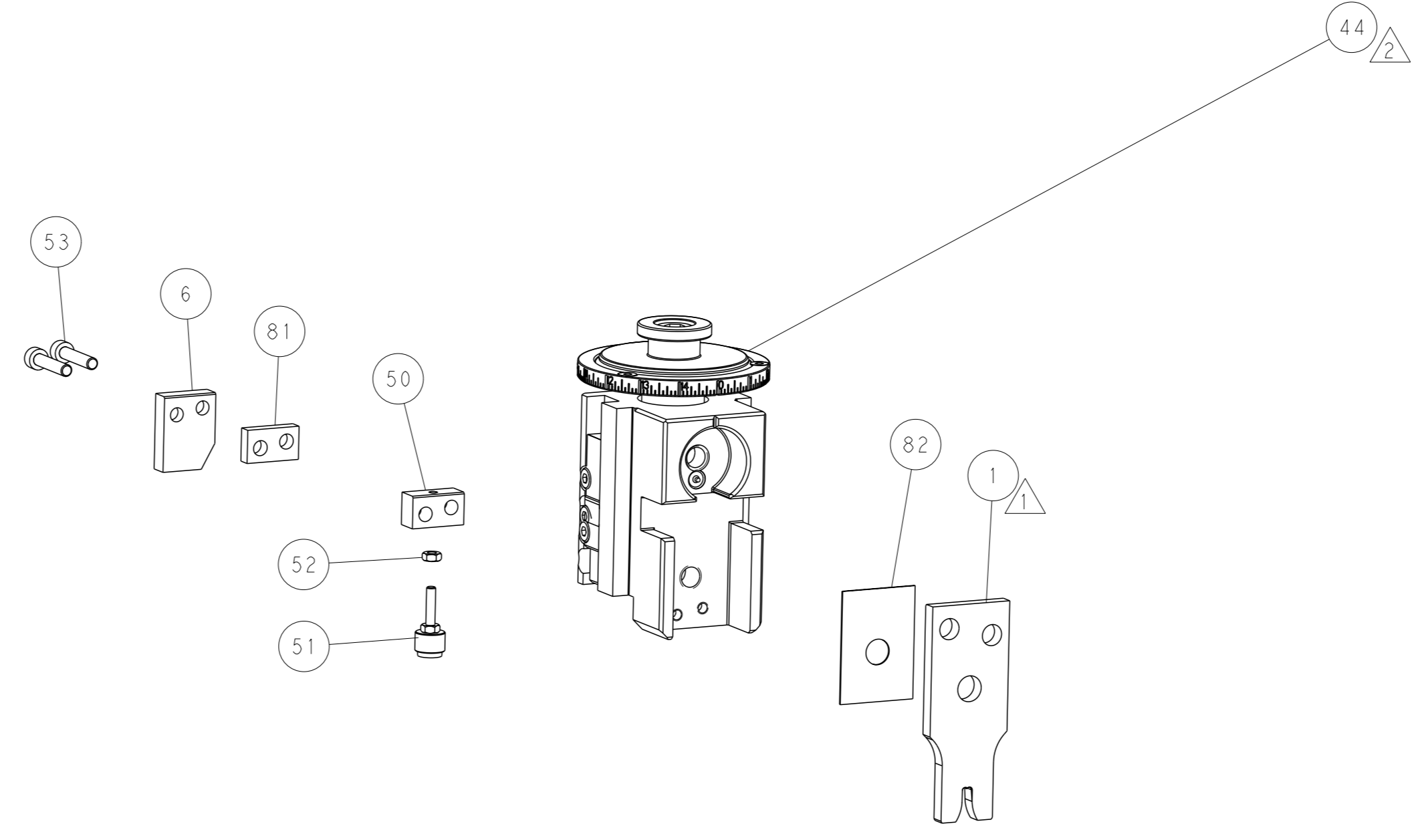
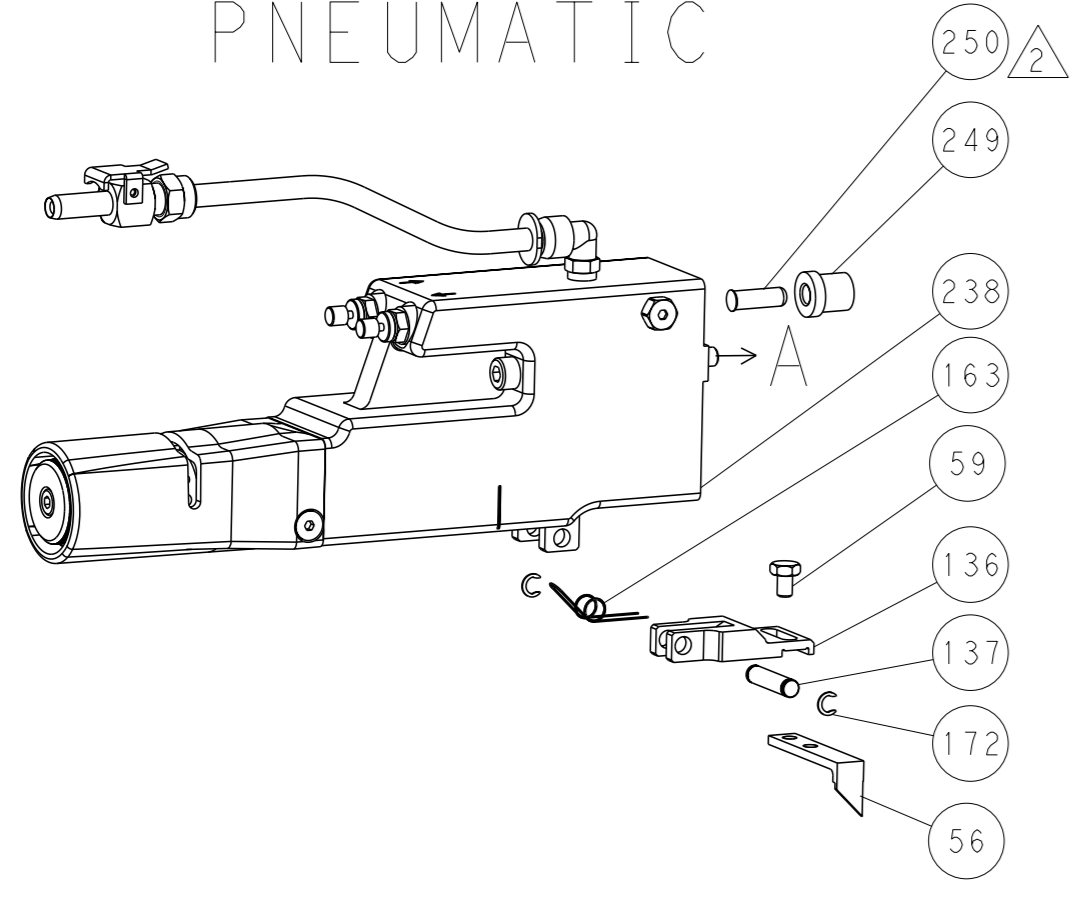
Customer Accessible Production Drawing SCALE 1:2 SHEET 1 OF 4 REV B

| LOC | DIST | REVISIONS | | | |
|-----|------|-----------|-------------|-----|------|
| | | REV | DATE | OWN | APVD |
| A | 66 | - | SEE SHEET 1 | - | - |

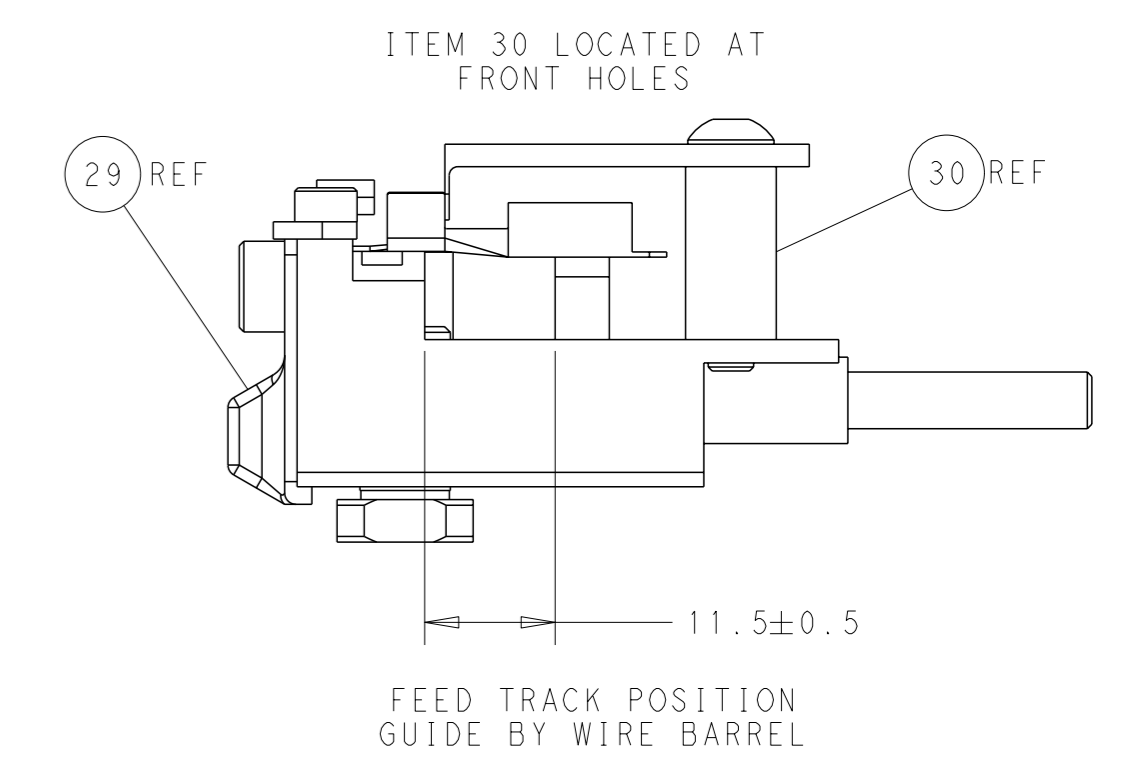
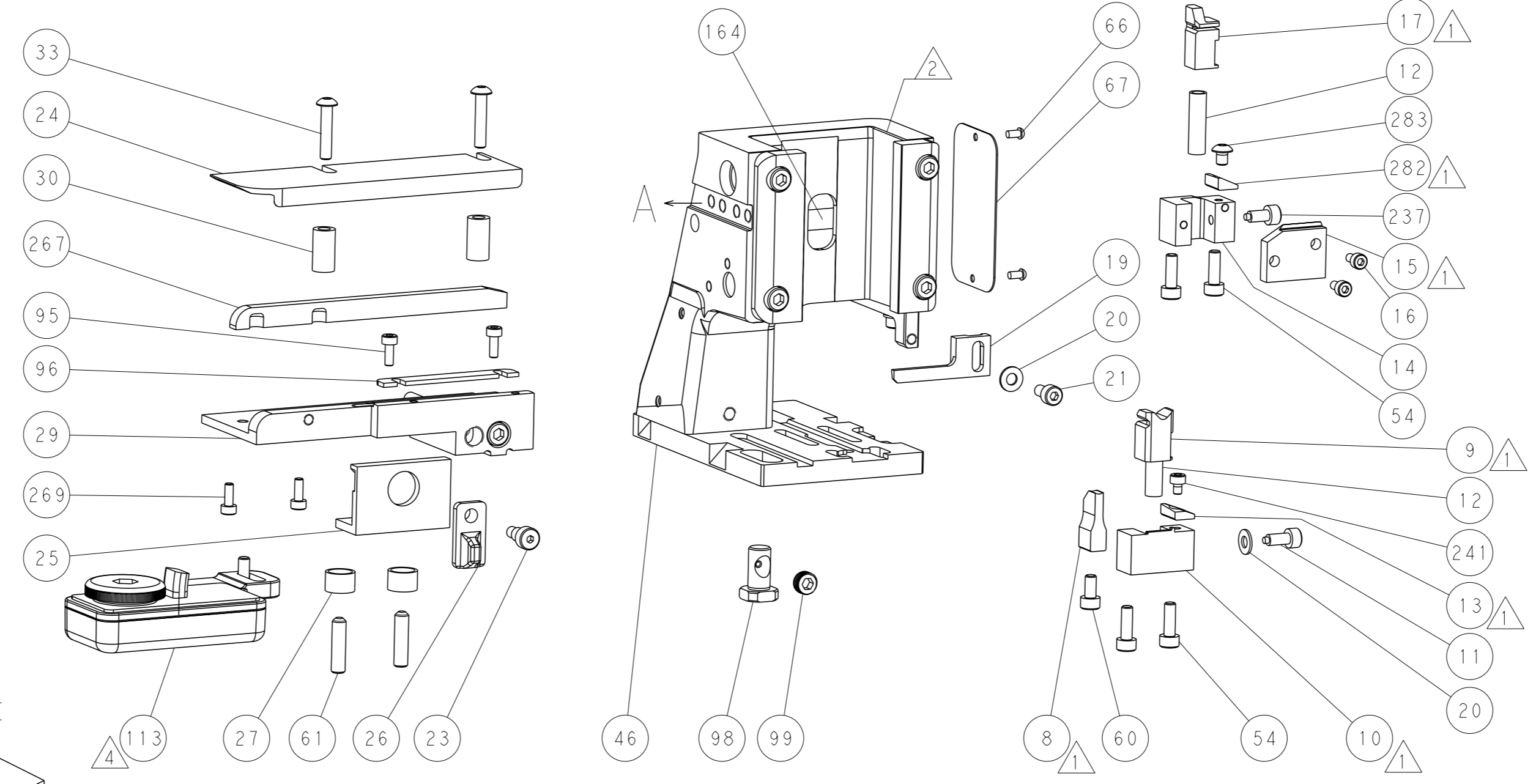
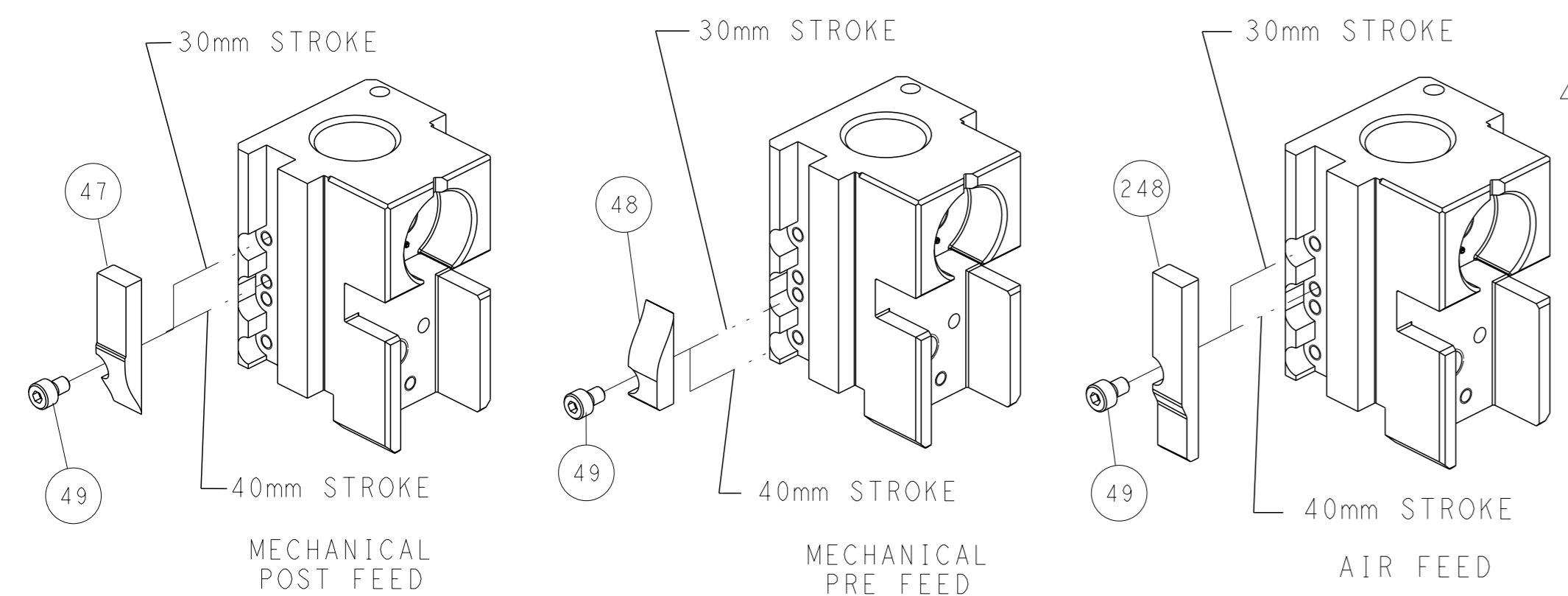
FEED TYPE MECHANICAL



PNEUMATIC



CAM POSITIONS

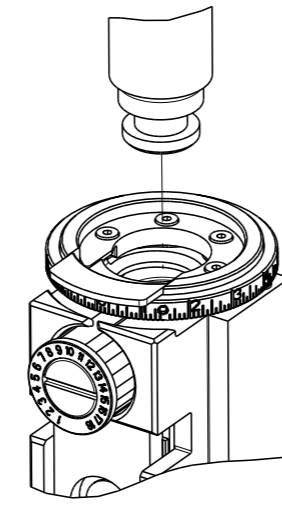


ATLANTIC VERSION
 Shown on sheets 1 of 4 & 2 of 4
 (Pacific version shown on sheets 3 of 4 & 4 of 4)

| | | | | | |
|-----------------------|--|---|--|---|--|
| DIMENSIONS: mm | | TOLERANCES UNLESS OTHERWISE SPECIFIED: 0 PLC ± 1 PLC ± 2 PLC ± 3 PLC ± 4 PLC ± ANGLES ± | | OWN J. HOU 19SEP2016 CHK L. ZHANG 19SEP2016 APVD L. ZHANG 19SEP2016 NAME Ocean Side Feed Applicator SIZE CAGE CODE DRAWING NO. RESTRICTED TO A1 00779 C=2836450 Customer Accessible Production Drawing SCALE 1:2 SHEET 2 of 4 REV B | |
| MATERIAL: | | FINISH: | | WEIGHT: | |

| PART NUMBER | REVISION | DESCRIPTION | FEED TYPE |
|-------------|----------|--------------------------|------------|
| 2-2836450-1 | B | FINE CRIMP HEIGHT ADJUST | MECHANICAL |
| 2-2836450-2 | B | FINE CRIMP HEIGHT ADJUST | PNEUMATIC |
| 7-2836450-7 | A | CRIMP TOOLING KIT | - |

PACIFIC VERSION TERMINATOR
INTERFACE ADAPTER



| APPLICATOR DATA | | |
|--------------------------------------|----------------|------|
| CRIMP | SIZE | TYPE |
| WIRE | 3.30 mm [1.30] | F |
| INSUL | - | - |
| APPLICATOR INSTRUCTIONS 408-35042 | | |

| TERMINAL DATA: TE TERMINAL | | TE CRIMP SPECIFICATION | |
|---|-------------|---------------------------|-------------|
| TERMINAL NAME: SHUR PLUG .180 DIA | | | |
| WIRE STRIP LENGTH | | INSULATION DIAMETER RANGE | |
| 5.56-6.32 mm [2.19-.249 IN] | | Ø | |
| TERMINAL APPLICATION SPECIFICATION | 114-2017 | - | - |
| TERMINALS APPLIED Δ 4 Δ 5 | | | |
| TE TERMINAL | TE TERMINAL | TE TERMINAL | TE TERMINAL |
| 42865-1 | 42865-3 | 63989-1 | |

| WIRE SIZE | CRIMP HEIGHT mm [INCH] | CRIMP HEIGHT REFERENCE SETTING Δ 3 |
|-----------|---------------------------|---|
| 10 AWG | 2.91+/-0.05 [1.15+/-0.02] | 3.0 |
| 12 AWG | 2.41+/-0.05 [0.95+/-0.02] | 9.2 |
| 14 AWG | 2.11+/-0.05 [0.83+/-0.02] | 12.3 |

- RECOMMENDED SPARE PARTS
 - Δ REFER TO SUPPLIED INSTRUCTION SHEET FOR CLEANING, LUBRICATION AND STORAGE OF APPLICATOR.
 - Δ CRIMP HEIGHT REFERENCE SETTING WAS THE SETTING USED WHEN THE APPLICATOR WAS QUALIFIED AT THE FACTORY. ADJUSTMENT MAY BE NECESSARY WHEN RUNNING APPLICATOR IN THE FIELD.
 - Δ TERMINAL LUBRICANT IS RECOMMENDED.
 - Δ MAXIMUM CMA FOR ALL WIRES 9600.
6. UNLESS SPECIFIED OTHERWISE TORQUE VALUES SHALL BE USED PER DOCUMENT, 101-35000.

***WARNING**
ON INSTALLATION, SET WIRE DISC TO CRIMP HEIGHT REFERENCE SETTING FOR LARGEST WIRE SIZE. CRIMP HEIGHT REFERENCE SETTINGS GREATER THAN THE VALUE SHOWN MAY CAUSE DAMAGE TO THE CRIMP TOOLING, REFER TO THE INSTRUCTION SHEET FOR PROPER SETUP AND ADJUSTMENTS.

PACIFIC VERSION
Shown on sheets 3 of 4 & 4 of 4
(Atlantic version shown on sheets 1 of 4 & 2 of 4)

| LOC | DIST | REVISIONS | | | | | |
|-----|------|-----------|-----|-------------|------|-----|------|
| A | 66 | P | LYR | DESCRIPTION | DATE | OWN | APVD |
| - | - | - | - | SEE SHEET 1 | - | - | - |

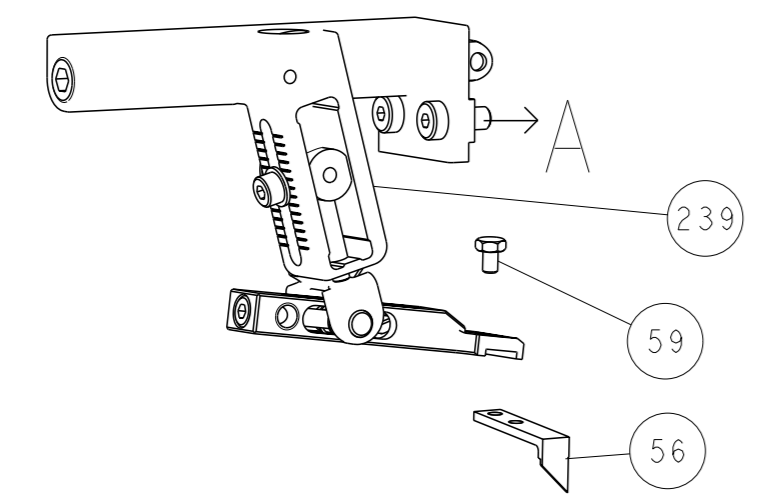
| | | | | | |
|---|-----|-----|-------------|-------------------------------------|-----|
| - | 1 | 1 | 5-18024-8 | SCR, BTN SKT HD CAP (M4 X 5.0) | 283 |
| - | 1 | 1 | 2280441-1 | INSERT, SHEAR | 282 |
| - | 2 | 2 | 2168083-1 | SCR, SKT HD CAP, RoHS, M3 X 8.0 | 269 |
| - | 1 | 1 | 1633782-2 | FENCE | 267 |
| - | 1 | - | 2119640-1 | PUSH ROD, AIR FEED | 250 |
| - | 1 | - | 1803259-1 | BUSHING, FLANGED | 249 |
| - | 1 | 1 | 7-18023-7 | SCR, SKT HD CAP M3 X 4.0 | 241 |
| - | - | 1 | 2119580-1 | MECHANICAL FEED ASSEMBLY | 239 |
| - | 1 | - | 2063440-1 | AIR FEED MODULE | 238 |
| - | 1 | 1 | 356885-4 | STOP, SHEAR | 237 |
| - | 2 | - | 21045-3 | RING, RETAIN, EXTERN, 3/16 CRESCENT | 172 |
| - | REF | REF | 994970-2 | COUNTER, MAGNETIC | 164 |
| - | 1 | - | 240638-1 | SPRING, FEED FINGER | 163 |
| - | 1 | - | 2119641-2 | FEED CAM, AIR FEED | 151 |
| - | 1 | 1 | 2168083-8 | SCR, SKT HD CAP, RoHS, M4 X 16 | 144 |
| - | 4 | 4 | 2168083-9 | SCR, SKT HD CAP, RoHS, M4 X 20 | 143 |
| - | - | 1 | 2119653-2 | FEED CAM, POST FEED | 142 |
| - | 1 | 1 | 1-1803583-0 | APPLICATOR BASIC ASSEMBLY, SF | 141 |
| - | 1 | 1 | 1803516-1 | RAM ASSEMBLY, SF PACIFIC | 140 |
| - | 1 | - | 3-23627-7 | PIN, RETAIN, GRVD, 3/16 X .854 | 137 |
| - | 1 | - | 2119799-1 | HOLDER, FEED FINGER, AF | 136 |
| - | 1 | 1 | 2119955-1 | ASSY, LUBRICATOR, SIDE FEED | 113 |
| - | 1 | 1 | 2844908-1 | SCREW, LOCKING | 99 |
| - | 1 | 1 | 2844907-1 | POST, LOCKING | 98 |
| - | 1 | 1 | 693855-1 | FRONT STRIP GUIDE | 96 |
| - | 2 | 2 | 2168083-1 | SCR, SKT HD CAP, RoHS, M3 X 8.0 | 95 |
| - | 1 | 1 | 455888-4 | SPACER, CRIMPER | 82 |
| - | 1 | 1 | 1-240641-0 | SPACER | 81 |
| - | 1 | 1 | 1803607-1 | DOCUMENTATION PACKAGE | 71 |
| - | 1 | 1 | 2119740-1 | TAG, IDENTIFICATION | 67 |
| - | 2 | 2 | 2168078-1 | SCREW, DRIVE, RH, RoHS, 2 x .188 | 66 |
| - | 2 | 2 | 2-18032-5 | SCR, SET, FLT PNT, M5 X 20.0 | 61 |
| - | 1 | 1 | 5-18022-5 | SCR, HEX HD CAP, M4 X 6.0 | 59 |
| - | 1 | 1 | 1338685-1 | PAWL, FEED | 56 |
| - | 2 | 2 | 2168083-9 | SCR, SKT HD CAP, RoHS, M4 X 20 | 53 |
| - | 1 | 1 | 5018030-1 | NUT, HEX, REG, RoHS, M3 | 52 |
| - | 1 | 1 | 811242-5 | BUMPER, HOLD DOWN | 51 |
| - | 1 | 1 | 690753-2 | SPACER, TONKER | 50 |
| - | 1 | 2 | 18023-9 | SCR, SKT HD CAP M4 X 6.0 | 49 |
| - | - | 1 | 2119652-1 | FEED CAM, PRE FEED | 48 |
| - | 1 | 1 | 1803602-1 | SCR, BHSC, RoHS (M8 X 25) | 41 |
| - | 2 | 2 | 2079383-5 | SCR, BHSC, RoHS (M4 X 20) | 33 |
| - | 2 | 2 | 3-2844962-0 | SPACER, CYLINDRICAL, STRIP GUIDE | 30 |
| - | 1 | 1 | 2844992-3 | ASSEMBLY, STRIP GUIDE | 29 |
| - | 1 | 1 | 1-455888-0 | SPACER, CRIMPER | 28 |
| - | 2 | 2 | 22283-1 | SPRING, COMPRESSION | 27 |
| - | 1 | 1 | 356835-1 | LEVER, DRAG RELEASE | 26 |
| - | 1 | 1 | 240792-5 | DRAG, TERMINAL | 25 |
| - | 1 | 1 | 1320928-2 | STRIP GUIDE | 24 |
| - | 1 | 1 | 980371-4 | SCR, SKT HD SHLDR 5.0 DIA X 6.0 | 23 |
| - | 1 | 1 | 2168083-2 | SCR, SKT HD CAP, RoHS, M4 X 8.0 | 21 |
| - | 2 | 2 | 1-18028-2 | WASHER, FLAT, REG M4 | 20 |
| - | 1 | 1 | 2119533-2 | STRIPPER, SIDE FEED | 19 |
| - | 1 | 1 | 1-690463-6 | FLOATING SHEAR, REAR | 17 |
| - | 2 | 2 | 1-2168083-1 | SCR, SKT HD CAP, RoHS, M3 X 6 | 16 |
| - | 1 | 1 | 690691-2 | PLATE, REAR SHEAR | 15 |
| - | 1 | 1 | 2119862-1 | SHEAR HOLDER, REAR | 14 |
| - | 1 | 1 | 2119806-1 | INSERT, SHEAR | 13 |
| - | 2 | 2 | 3-22280-3 | SPRING, COMPRESSION | 12 |
| - | 1 | 1 | 1-356885-4 | STOP, SHEAR | 11 |
| - | 1 | 1 | 2119805-1 | SHEAR HOLDER, FRONT | 10 |
| - | 1 | 1 | 1803095-5 | FLOATING SHEAR, FRONT | 9 |
| - | 1 | 1 | 8-1633933-4 | ANVIL, COMBINATION | 8 |
| - | - | - | - | - | 7 |
| - | 1 | 1 | 1-690468-7 | DEPRESSOR SHEAR, REAR | 6 |
| - | 1 | 1 | 1-2119757-2 | DEPRESSOR, SHEAR | 5 |
| - | - | - | - | - | 4 |
| - | - | - | - | - | 3 |
| - | - | - | - | - | 2 |
| - | 1 | 1 | 456410-7 | CRIMPER, WIRE PREMIUM | 1 |

| DIMENSIONS: | | TOLERANCES UNLESS OTHERWISE SPECIFIED: | | APPLICATOR DATA | |
|--|---------|--|---------|-----------------|---------|
| mm | 0 PLC ± | 1 PLC ± | 2 PLC ± | 3 PLC ± | 4 PLC ± |
| | ANGLES | FINISH | | | |
| MATERIAL | | | | | |
| Customer Accessible Production Drawing | | SCALE | 1:2 | SHEET | 3 of 4 |

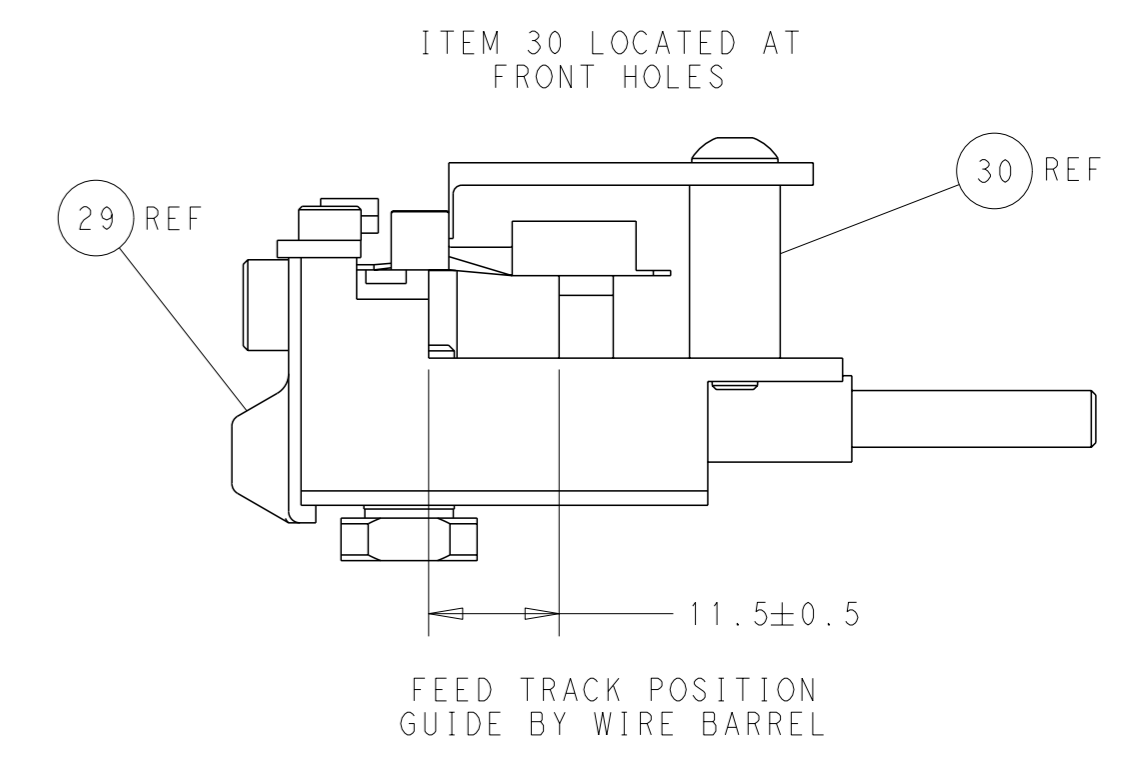
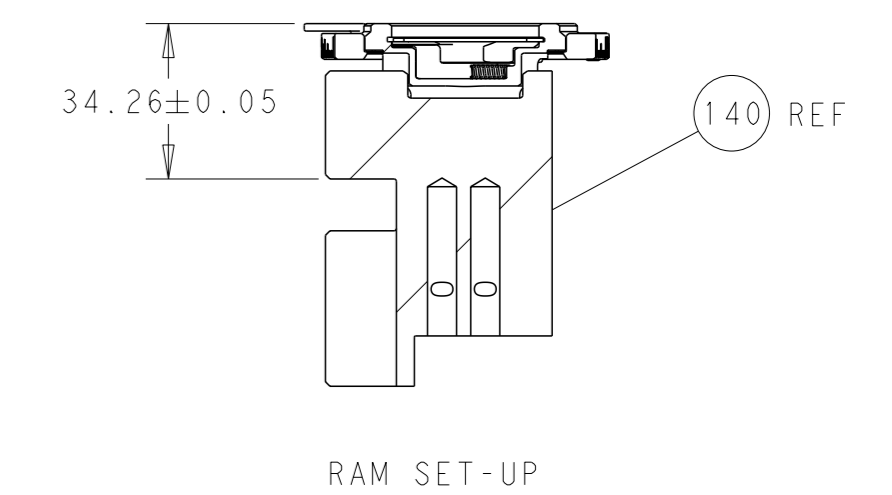
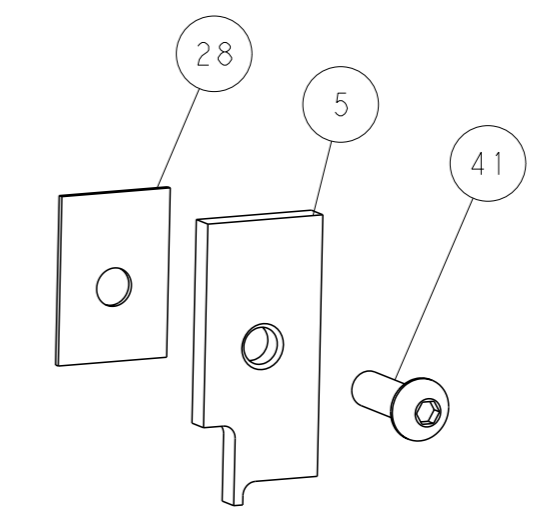
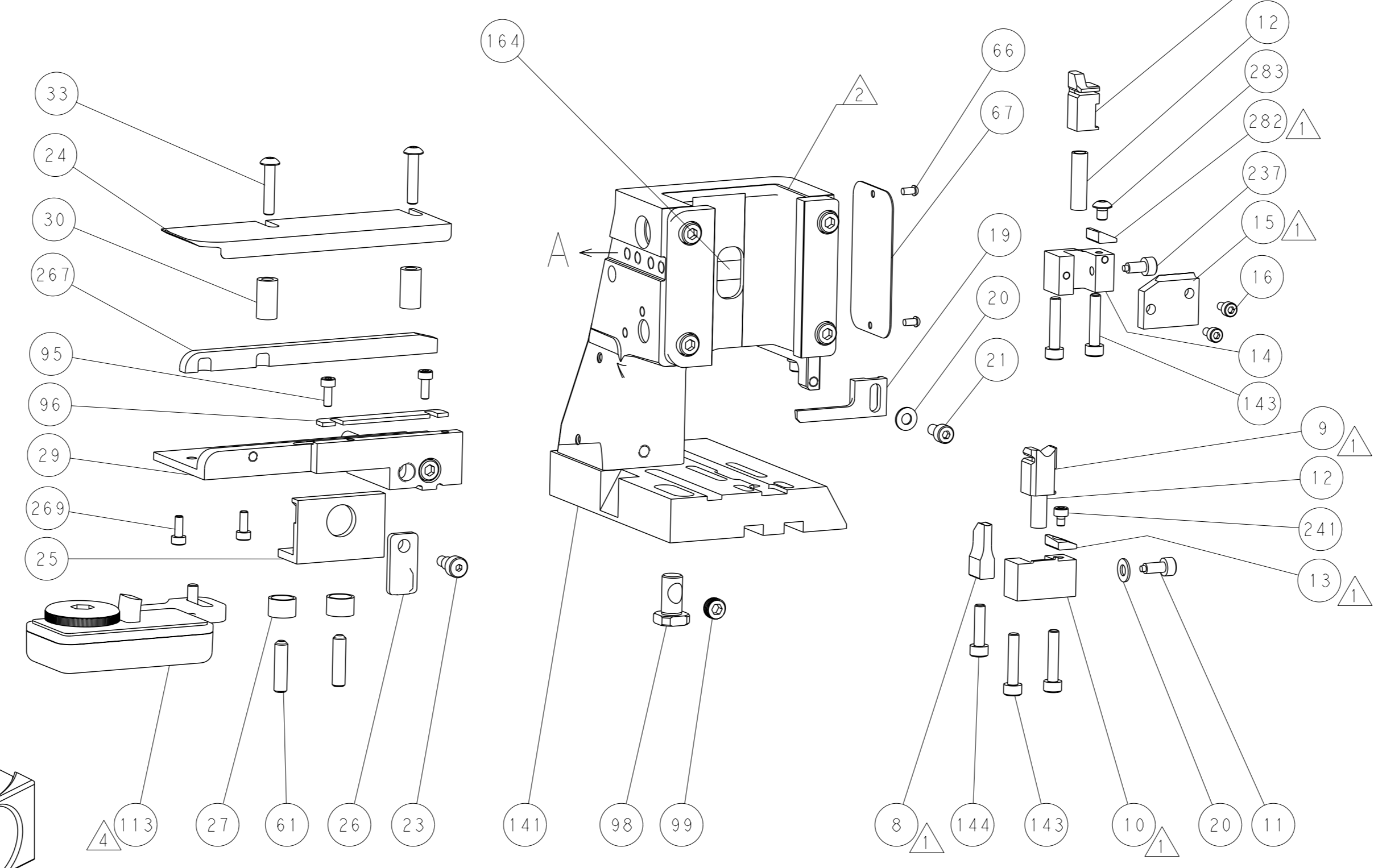
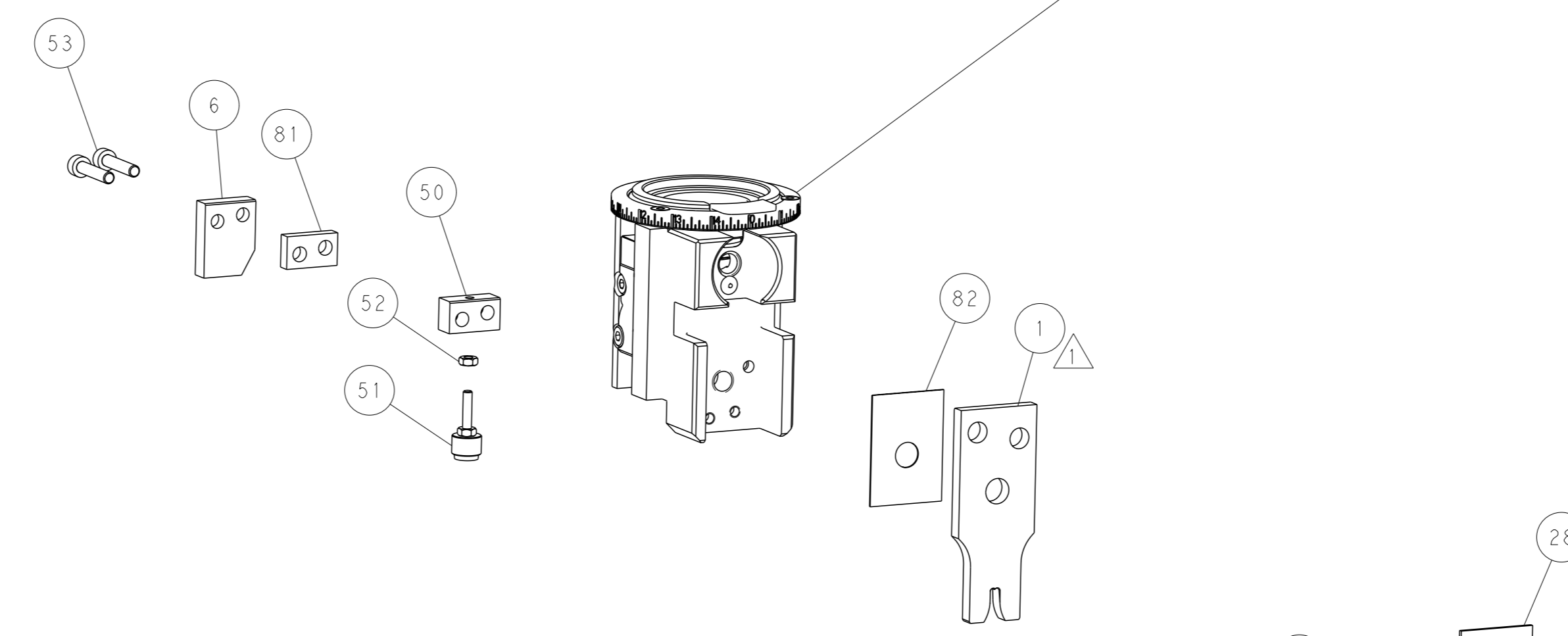
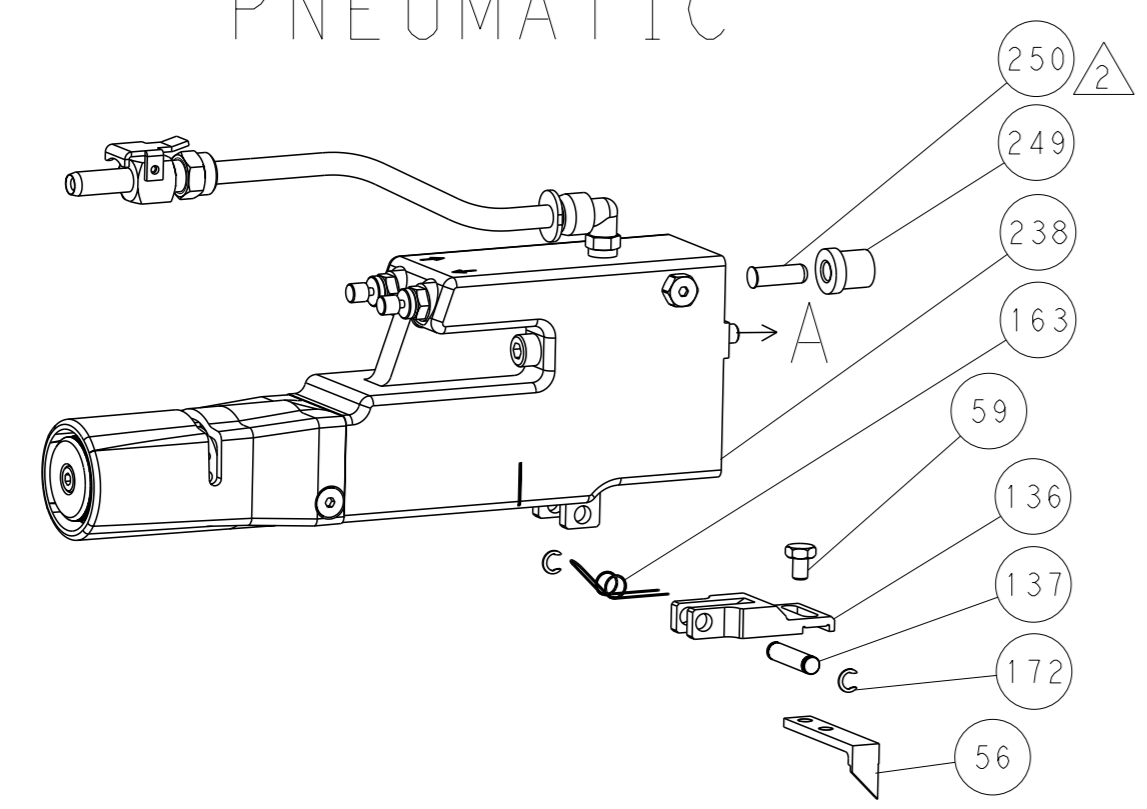
| OWN | CHK | APVD | DATE | DESCRIPTION | ITEM NO |
|-------------------------------|----------|----------|-----------|--|---------|
| J. HOU | L. ZHANG | L. ZHANG | 19SEP2016 | TE Connectivity Harrisburg, PA 17105-3608 | |
| Ocean Side Feed Applicator | | | | | |

| LOC | | DIST | | REVISIONS | | | |
|-----|----|------|-----|-------------|------|-----|------|
| A | 66 | P | LYR | DESCRIPTION | DATE | OWN | APVD |
| | | - | | SEE SHEET 1 | - | - | - |

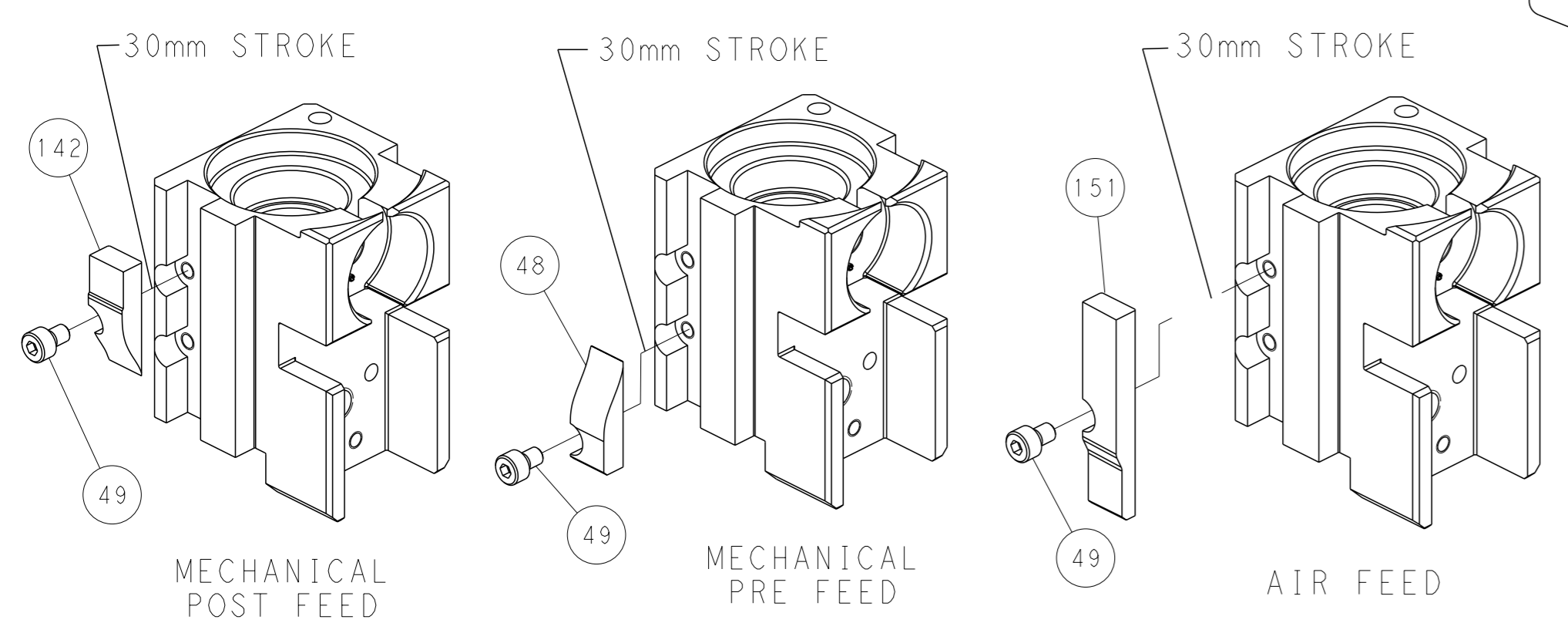
FEED TYPE MECHANICAL



PNEUMATIC



CAM POSITIONS



PACIFIC VERSION
 Shown on sheets 3 of 4 & 4 of 4
 (Atlantic version shown on sheets 1 of 4 & 2 of 4)

| | | | |
|--|---|--|---|
| <small>THIS DRAWING IS A CONTROLLED DOCUMENT FOR TYCO ELECTRONICS CORPORATION. IT IS SUBJECT TO CHANGE AND THE CONTROLLING ENGINEERING ORGANIZATION SHOULD BE CONTACTED FOR THE LATEST REVISION.</small> | | OWN: J. HOU 19SEP2016 CHK: L. ZHANG 19SEP2016 APVD: L. ZHANG 19SEP2016 | NAME: TE Connectivity Harrisburg, PA 17105-3608 |
| DIMENSIONS: mm TOLERANCES UNLESS OTHERWISE SPECIFIED: 0 PLC ± 1 PLC ± 2 PLC ± 3 PLC ± 4 PLC ± ANGLES FINISH ± | APPLICATION SPEC: - WEIGHT: - MATERIAL: - | SIZE: A1 CAGE CODE: 00779 DRAWING NO: C=2836450 | RESTRICTED TO: - SCALE: 1:2 SHEET: 4 of 4 REV: B |