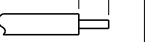

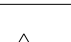


8	7
THIS DRAWING IS UNPUBLISHED.	
RELEASED FOR PUBLICATION 2016	
COPYRIGHT 2016 BY TYCO ELECTRONICS CORPORATION. ALL RIGHTS RESERVED.	
PART NUMBER	REVISION
2836439-2	B
7-2836439-2	B
7-2836439-7	A
DESCRIPTION	
FINE CRIMP HEIGHT ADJUST	
PNEUMATIC AND CRIMP TOOLING KIT	
CRIMP TOOLING KIT	
FEED TYPE	
PNEUMATIC	
PNEUMATIC	
-	

APPLICATOR DATA		
CRIMP	SIZE	TYPE
WIRE	3.25 mm [.128]	F
INSUL	3.55 mm [.140]	F
APPLICATOR INSTRUCTIONS 408-35042		

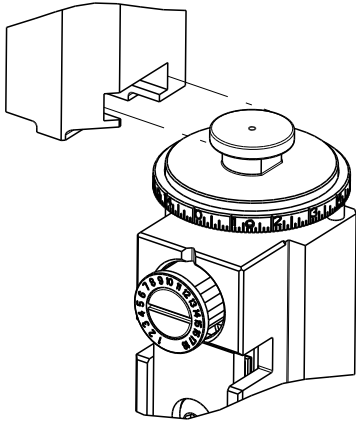
TERMINAL DATA: DELPHI TERMINAL		DELPHI PACKARD CRIMP SPECIFICATION	
TERMINAL NAME: TAXI TERMINAL F 59			
WIRE STRIP LENGTH 4.58-5.34 mm [.180-.210 IN]		 INSULATION DIAMETER RANGE Ø2.45-3.10 mm [.096-.122 IN]	
TERMINAL APPLICATION SPECIFICATION		06288808 PAGE 2 OF 6 Rev 2013-10-29	
			
TERMINALS APPLIED			
			
TE TERMINAL	DELPHI TERMINAL	TE TERMINAL	DELPHI TERMINAL
2303661-1	06288808	2303661-2	02973216

WIRE SIZE	CRIMP HEIGHT mm [INCH]	CRIMP HEIGHT REFERENCE SETTING
2.00mm2	1.65+/-0.05 [.065+/- .002]	6.0
1.50mm2	1.63+/-0.05 [.064+/- .002]	6.2
1.00mm2	1.60+/-0.05 [.063+/- .002]	6.3



- 1 RECOMMENDED SPARE PARTS
- 2 REFER TO SUPPLIED INSTRUCTION SHEET FOR CLEANING, LUBRICATION AND STORAGE OF APPLICATOR.
- 3 APPLY PART NUMBER 2-23419-6 LOCTITE TO THREADS OF ITEM 242.
- 4 CRIMP HEIGHT REFERENCE SETTING WAS THE SETTING USED WHEN THE APPLICATOR WAS QUALIFIED AT THE FACTORY. ADJUSTMENT MAY BE NECESSARY WHEN RUNNING APPLICATOR IN THE FIELD.
- 5 TERMINAL LUBRICANT IS RECOMMENDED.
6. UNLESS SPECIFIED OTHERWISE TORQUE VALUES SHALL BE USED PER DOCUMENT, 101-35000.
- 7 POSITION ITEM 56 TO FEED TERMINAL FROM RECEPTACLE.

ATLANTIC VERSION TERMINATOR
INTERFACE ADAPTER



ATLANTIC VERSION
Shown on sheets 1 of 4 & 2 of 4
(Pacific version shown on sheets 3 of 4 & 4 of 4)

LOC	DIST	REVISIONS			
A	66	P	LTR	DESCRIPTION	DATE
		A		RELEASED	02DEC2016
		B		ECR-18-017272	01NOV2018

	-	1	1	2119640-1	PUSH ROD, AIR FEED	250
	-	1	1	1803259-1	BUSHING, FLANGED	249
	-	1	1	2119641-1	FEED CAM, AIR FEED	248
	-	1	1	2119082-4	CAM, SNAIL, INSULATION ADJUSTMENT	244
	-	1	1	2079764-1	WASHER, WAVE SPRING, CREST-TO-CREST	243
3	-	1	1	2119083-1	RETAINER, INSULATION DIAL	242
	-	1	1	2063440-1	AIR FEED MODULE	238
	-	1	1	356885-5	STOP, SHEAR	237
	-	1	1	1-18028-0	WASHER, FLAT, REG M8	192
	-	2	2	21045-3	RING, RETAIN, EXTERN, 3/16 CRESCENT	172
	-	REF	REF	994970-2	COUNTER, MAGNETIC	164
	-	1	1	240638-1	SPRING, FEED FINGER	163
	-	1	1	3-23627-7	PIN, RETAIN, GRVD, 3/16 X .854	137
	-	1	1	2119799-1	HOLDER,FEED FINGER, AF	136
	-	1	1	1-22281-8	SPRING, COMPRESSION	121
5	-	1	1	2119955-1	ASSY, LUBRICATOR, SIDE FEED	113
	-	1	1	2844908-1	SCREW, LOCKING	99
	-	1	1	2844907-1	POST, LOCKING	98
	-	1	1	1803258-1	FRONT STRIP GUIDE	96
	-	1	1	2168083-6	SCR, SKT HD CAP, RoHS, M5 X 65	93
	-	2	2	1-2168083-3	SCR, SKT HD CAP, RoHS, M3 X 16	85
	-	1	1	455888-6	SPACER, CRIMPER	82
	-	1	1	5-240641-1	SPACER	81
	-	1	1	1803607-1	DOCUMENTATION PACKAGE	71
	-	1	1	2119740-1	TAG,IDENTIFICATION	67
	-	2	2	2168078-1	SCREW, DRIVE, RH, RoHS, 2 x .188	66
	-	2	2	2-18032-5	SCR, SET, FLT PNT, M5 X 20.0	61
	-	1	1	2168083-2	SCR, SKT HD CAP, RoHS, M4 X 8.0	60
	-	1	1	5-18022-5	SCR, HEX HD CAP, M4 X 6.0	59
7	-	1	1	1-1338683-0	FEED PAWL	56
	-	2	2	2168083-3	SCR, SKT HD CAP, RoHS, M4 X 12.0	54
	-	2	2	2168083-8	SCR, SKT HD CAP, RoHS, M4 X 16	53
	-	1	1	18023-9	SCR, SKT HD CAP M4 X 6.0	49
	-	1	1	1803583-9	APPLICATOR BASIC ASSEMBLY, SF	46
	-	1	1	1803515-1	RAM ASSEMBLY, SF ATLANTIC	44
	-	1	1	1803602-1	SCR, BHSC, RoHS (M8 X 25)	41
	-	2	2	2168083-1	SCR, SKT HD CAP, RoHS, M3 X 8.0	33
	-	1	1	2-2305692-3	PLATE, REAR STRIP GUIDE	29
	-	2	2	22281-8	SPRING, COMPRESSION	27
	-	1	1	356835-1	LEVER, DRAG RELEASE	26
	-	1	1	240792-3	DRAG, TERMINAL	25
	-	1	1	2-189124-4	GUIDE, FRONT STRIP	24
	-	1	1	980371-4	SCR, SKT HD SHLDR 5.0 DIA X 6.0	23
	-	1	1	2168083-2	SCR, SKT HD CAP, RoHS, M4 X 8.0	21
	-	1	1	1-18028-2	WASHER, FLAT, REG M4	20
	-	1	1	2119533-1	STRIPPER, SIDE FEED	19
1	-	1	1	1673257-6	SHEAR, FLOATING	17
	-	2	2	1-2168083-1	SCR, SKT HD CAP, RoHS, M3 X 6	16
1	-	1	1	1673256-5	PLATE, REAR SHEAR	15
	-	1	1	1673255-3	HOLDER, REAR SHEAR	14
	-	1	1	3-22280-3	SPRING, COMPRESSION	12
	-	-	-	-	-	10
	-	-	-	-	-	9
1	1	2	1	3-1803252-7	ANVIL, COMBINATION	8
	-	-	-	-	-	7
	-	1	1	2-690468-5	DEPRESSOR SHEAR, REAR	6
	-	-	-	-	-	5
	-	1	1	6-238011-5	BLOCK, CRIMPER SPACER	4
1	1	2	1	8-1803187-9	CRIMPER, INSULATION F	3
	-	1	1	1-455888-0	SPACER, CRIMPER	2
1	1	2	1	8-1633588-7	CRIMPER, WIRE	1

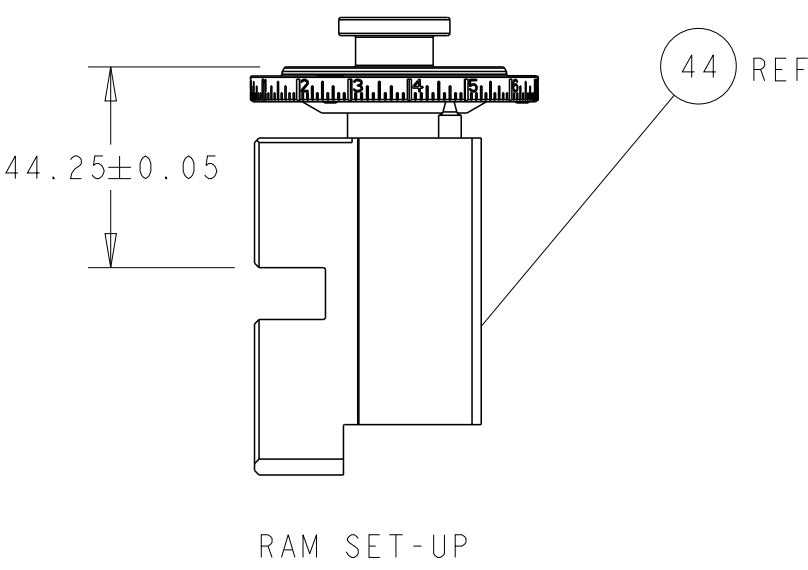
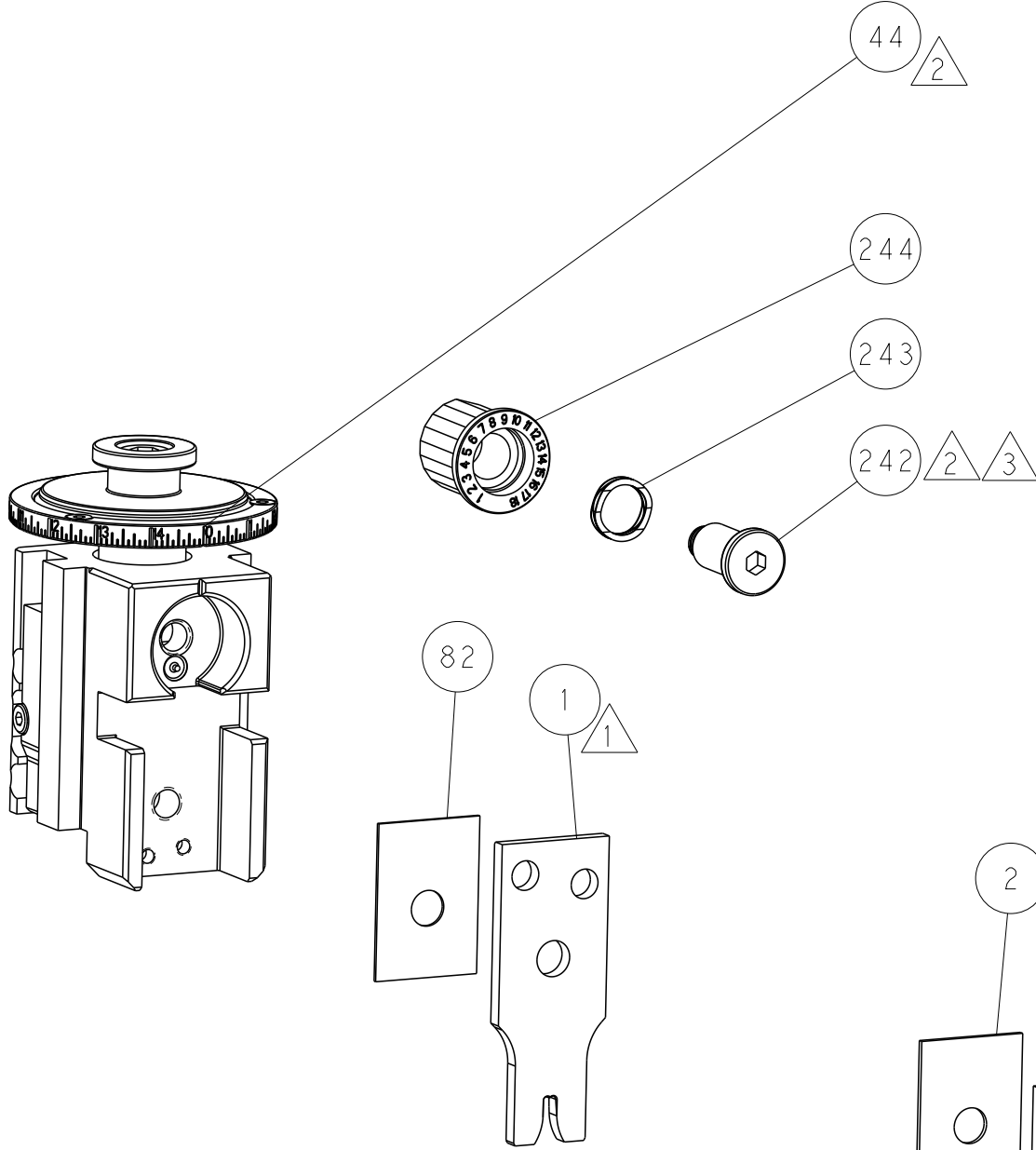
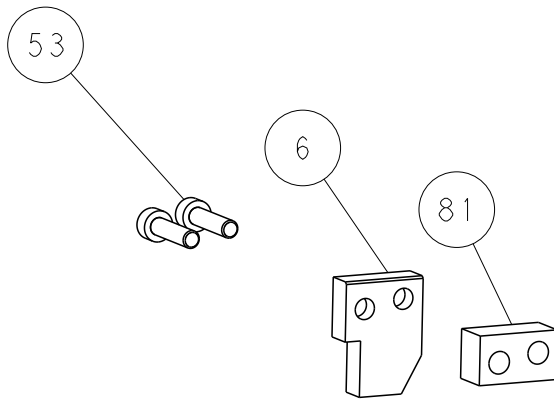
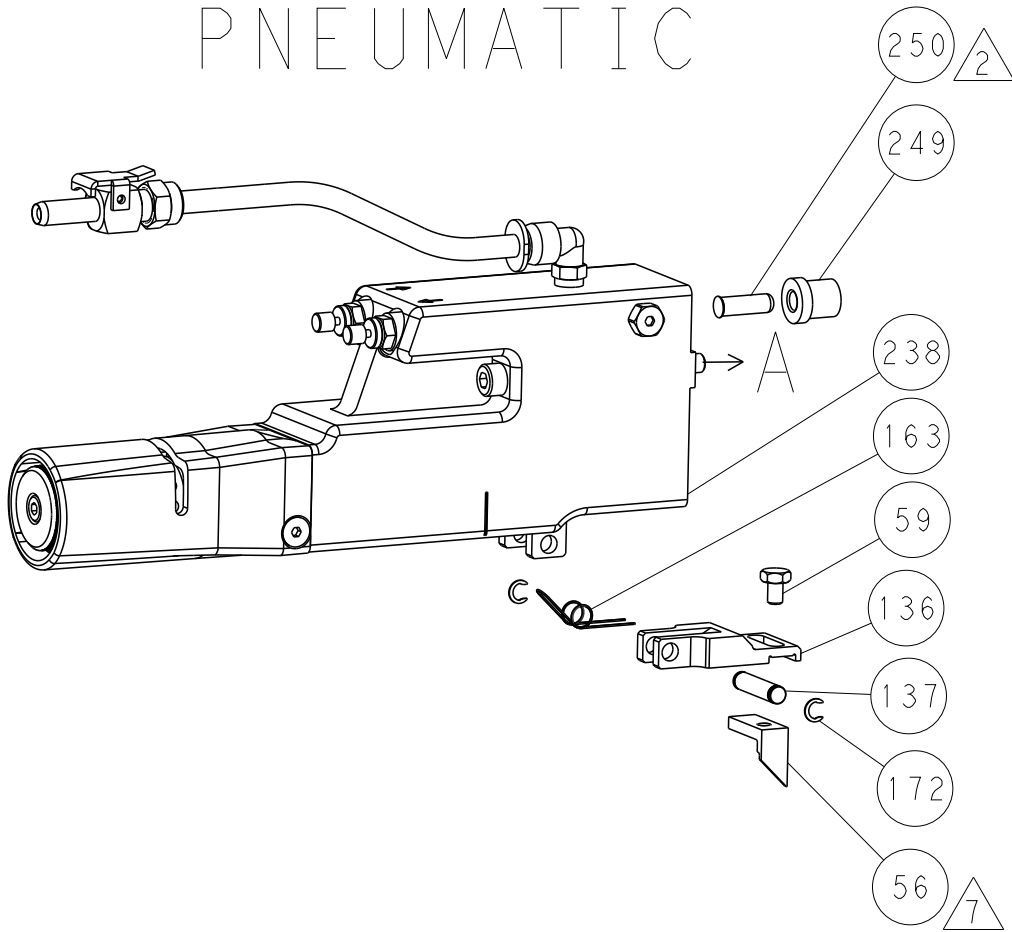
-77-72	-2	PART NO	DESCRIPTION	ITEM NO
Customer Accessible Production Drawing				
SCALE 1:2 SHEET 1 OF 4 REV B				

THIS DRAWING IS UNPUBLISHED. IT IS SUBJECT TO CHANGE WITHOUT NOTICE. THE USER SHALL BE RESPONSIBLE FOR VERIFYING THE LATEST VERSION OF THE DRAWING. IT IS SUBJECT TO CHANGE WITHOUT NOTICE. THE USER SHALL BE RESPONSIBLE FOR VERIFYING THE LATEST VERSION OF THE DRAWING.			
OWN M. HERR 29SEP2016			
CHK T. ELBIN 29SEP2016			
APVD T. ELBIN 29SEP2016			
PRODUCT SPEC			
APPLICATION SPEC			
WEIGHT			
MATERIAL			
FINISH			
Customer Accessible Production Drawing			
SCALE 1:2 SHEET 1 OF 4 REV B			

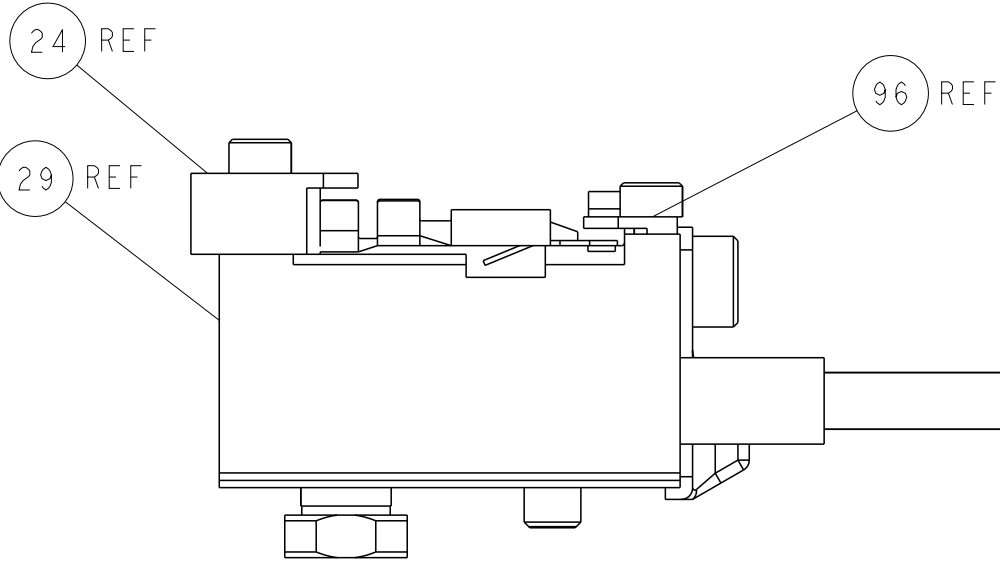
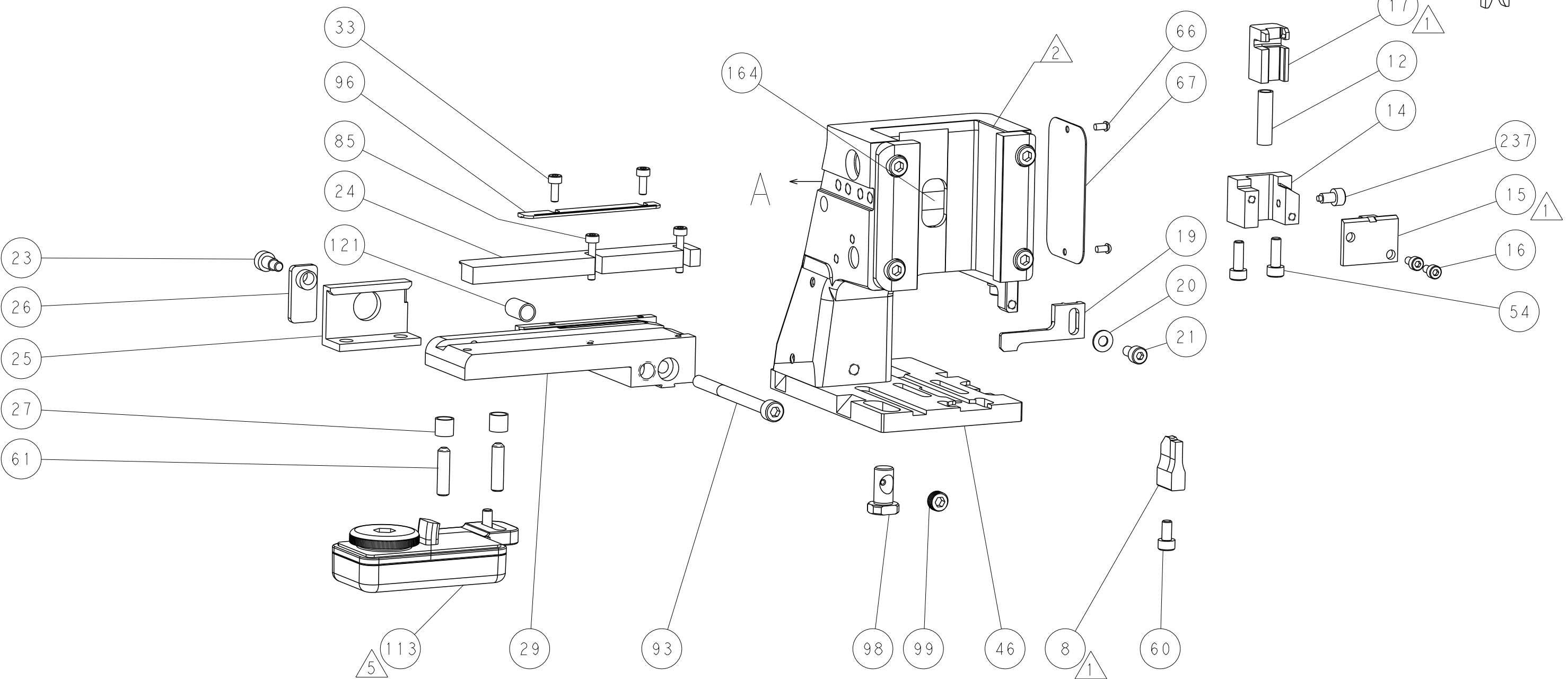
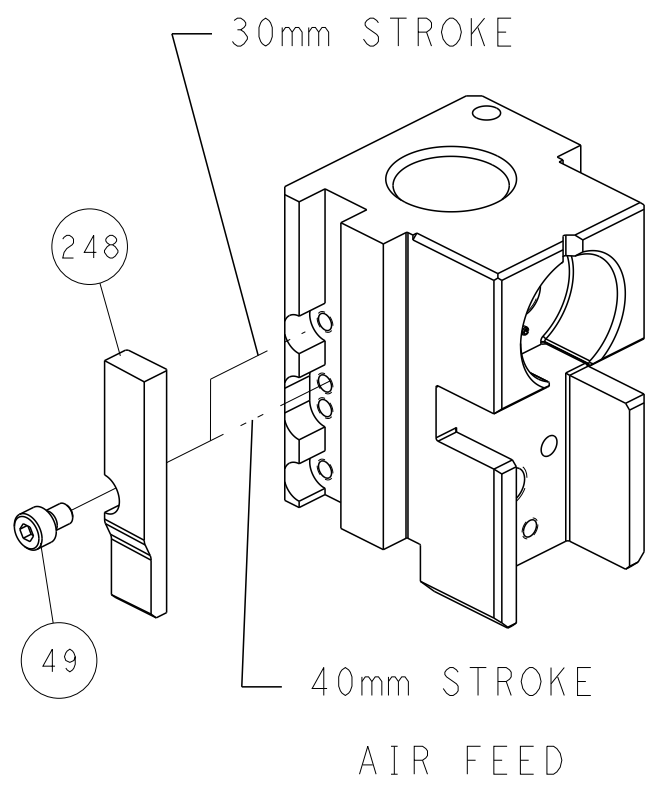
SHEETS 3 & 4 ARE NOT REQUIRED FOR ATLANTIC VERSION

LOC	DIST	REVISIONS					
		P	LTR	DESCRIPTION	DATE	DWN	APVD
A	66	-	-	SEE SHEET 1	-	-	-

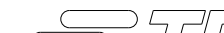

FEED TYPE
PNEUMATIC



CAM POSITION

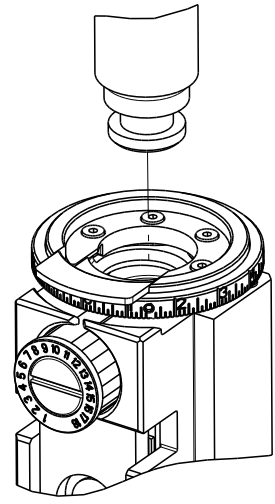


ATLANTIC VERSION
Shown on sheets 1 of 4 & 2 of 4
(Pacific version shown on sheets 3 of 4 & 4 of 4)

THIS DRAWING IS A CONTROLLED DOCUMENT FOR TYCO ELECTRONICS CORPORATION IT IS SUBJECT TO COMPANY CONTROL AND END-USERING ORGANIZATION SHOULD BE CONTACTED FOR THE LATEST REVISION.				DWN M. HERR	29SEP2016	 TE Connectivity Harrisburg, PA 17105-3608	
				CHK T. ELBIN	29SEP2016		
				APVD T. ELBIN	29SEP2016	NAME	
DIMENSIONS: mm				PRODUCT SPEC		Ocean Side Feed Applicator -	
				APPLICATION SPEC			
				TOLERANCES UNLESS OTHERWISE SPECIFIED: 0 PLC ± 1 PLC ± 2 PLC ± 3 PLC ± 4 PLC ± ANGLES ± FINISH ±		SIZE CAGE CODE DRAWING NO RESTRICTED TO	
MATERIAL				WEIGHT		A1 00779 C=2836439	
				Customer Accessible Production Drawing		SCALE 1:2	SHEET 2 OF 4 REV B

8	7
THIS DRAWING IS UNPUBLISHED.	
RELEASED FOR PUBLICATION 2016	
COPYRIGHT 2016 BY TYCO ELECTRONICS CORPORATION. ALL RIGHTS RESERVED.	
PART NUMBER	REVISION
DESCRIPTION	FEED TYPE
2-2836439-2	B
7-2836439-7	A
FINE CRIMP HEIGHT ADJUST	PNEUMATIC
CRIMP TOOLING KIT	-

PACIFIC VERSION TERMINATOR
INTERFACE ADAPTER



APPLICATOR DATA		
CRIMP	SIZE	TYPE
WIRE	3.25 mm [.128]	F
INSUL	3.55 mm [.140]	F
APPLICATOR INSTRUCTIONS 408-35042		

TERMINAL DATA: DELPHI TERMINAL DELPHI PACKARD CRIMP SPECIFICATION			
TERMINAL NAME: TAXI TERMINAL F 59			
WIRE STRIP LENGTH 4.58-5.34 mm [.180-.210 IN]		INSULATION DIAMETER RANGE Ø2.45-3.10 mm [.096-.122 IN]	
TERMINAL APPLICATION SPECIFICATION	06288808	PAGE 2 OF 6	Rev 2013-10-29
TERMINALS APPLIED			
TE TERMINAL	DELPHI TERMINAL	TE TERMINAL	DELPHI TERMINAL
2303661-1	06288808	2303661-2	02973216

WIRE SIZE		CRIMP HEIGHT mm [INCH]		CRIMP HEIGHT REFERENCE SETTING
2.00mm2		1.65+/-0.05 [.065+/-0.002]		6.0
1.50mm2		1.63+/-0.05 [.064+/-0.002]		6.2
1.00mm2		1.60+/-0.05 [.063+/-0.002]		6.3



- RECOMMENDED SPARE PARTS
- REFER TO SUPPLIED INSTRUCTION SHEET FOR CLEANING, LUBRICATION AND STORAGE OF APPLICATOR.
- APPLY PART NUMBER 2-23419-6 LOCTITE TO THREADS OF ITEM 242.
- CRIMP HEIGHT REFERENCE SETTING WAS THE SETTING USED WHEN THE APPLICATOR WAS QUALIFIED AT THE FACTORY. ADJUSTMENT MAY BE NECESSARY WHEN RUNNING APPLICATOR IN THE FIELD.
- TERMINAL LUBRICANT IS RECOMMENDED.
6. UNLESS SPECIFIED OTHERWISE TORQUE VALUES SHALL BE USED PER DOCUMENT, 101-35000.
- POSITION ITEM 56 TO FEED TERMINAL FROM RECEPTACLE.

*WARNING
ON INSTALLATION, SET WIRE DISC TO CRIMP HEIGHT REFERENCE SETTING FOR LARGEST WIRE SIZE. CRIMP HEIGHT REFERENCE SETTINGS GREATER THAN THE VALUE SHOWN MAY CAUSE DAMAGE TO THE CRIMP TOOLING. REFER TO THE INSTRUCTION SHEET FOR PROPER SETUP AND ADJUSTMENTS.

PACIFIC VERSION
Shown on sheets 3 of 4 & 4 of 4
(Atlantic version shown on sheets 1 of 4 & 2 of 4)

LOC	DIST	REVISIONS			
A	66	P	LTR	DESCRIPTION	DATE
		-		SEE SHEET 1	-

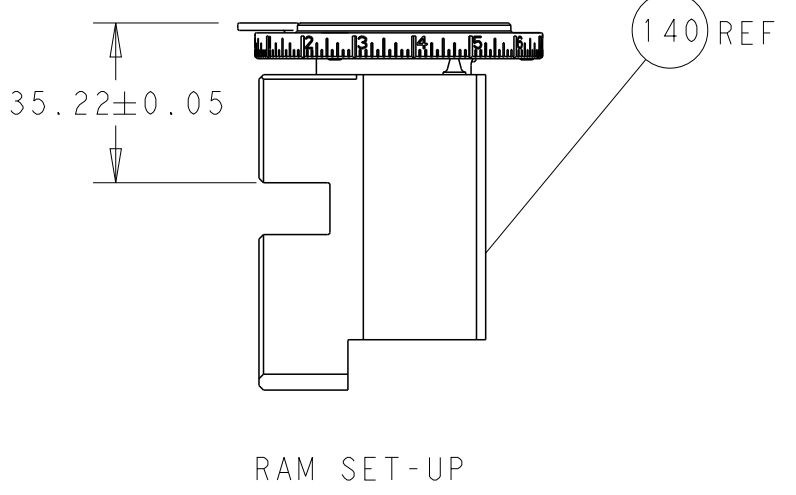
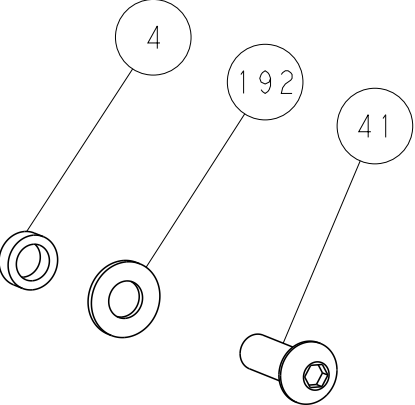
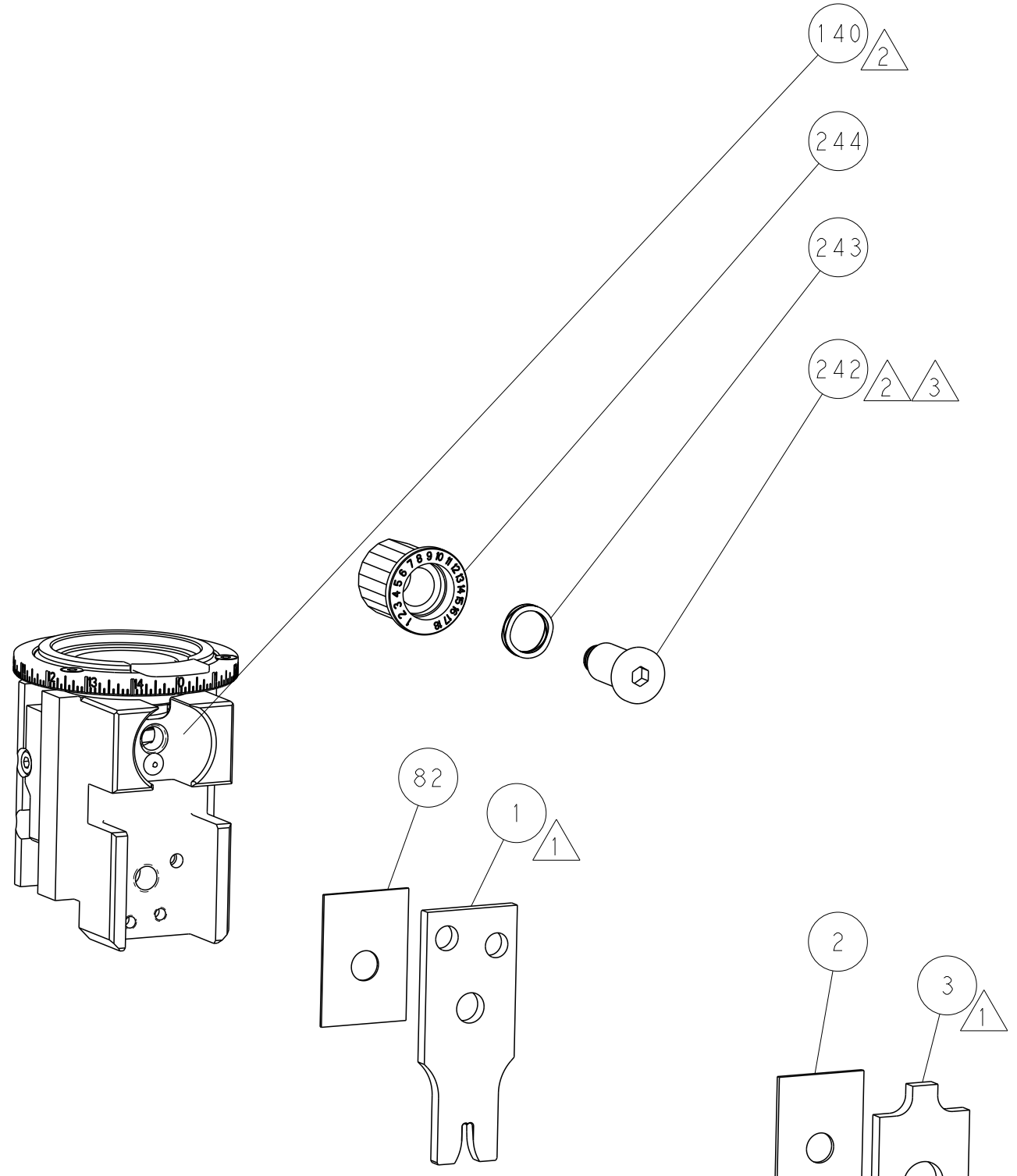
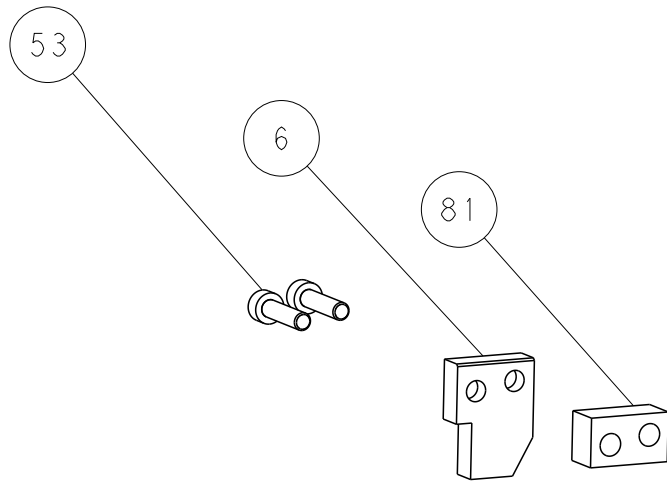
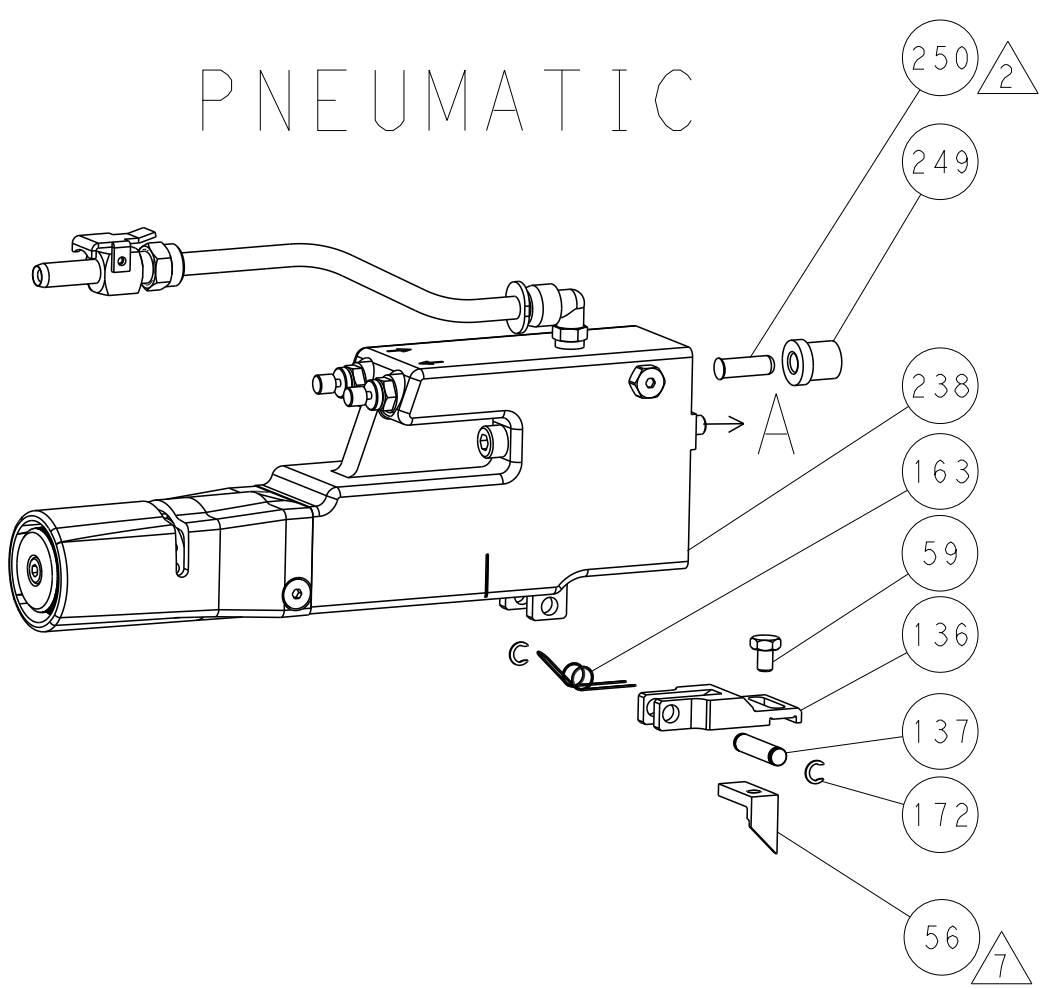
3	-	1	2119640-1	PUSH ROD, AIR FEED	250
	-	1	1803259-1	BUSHING, FLANGED	249
	-	1	2119082-4	CAM, SNAIL, INSULATION ADJUSTMENT	244
	-	1	2079764-1	WASHER, WAVE SPRING, CREST-TO-CREST	243
	-	1	2119083-1	RETAINER, INSULATION DIAL	242
	-	1	2063440-1	AIR FEED MODULE	238
	-	1	356885-5	STOP, SHEAR	237
	-	1	1-18028-0	WASHER, FLAT, REG M8	192
	-	2	21045-3	RING, RETAIN, EXTERN, 3/16 CRESCENT	172
	-	REF	994970-2	COUNTER, MAGNETIC	164
	-	1	240638-1	SPRING, FEED FINGER	163
	-	1	2119641-2	FEED CAM, AIR FEED	151
	-	1	2168083-8	SCR, SKT HD CAP, RoHS, M4 X 16	144
	-	2	2168083-9	SCR, SKT HD CAP, RoHS, M4 X 20	143
	-	1	1-1803583-0	APPLICATOR BASIC ASSEMBLY, SF	141
	5	-	1	1803516-1	RAM ASSEMBLY, SF PACIFIC
-		1	3-23627-7	PIN, RETAIN, GRVD, 3/16 X .854	137
-		1	2119799-1	HOLDER,FEED FINGER, AF	136
-		1	1-22281-8	SPRING, COMPRESSION	121
-		1	2119955-1	ASSY, LUBRICATOR, SIDE FEED	113
-		1	2844908-1	SCREW, LOCKING	99
-		1	2844907-1	POST, LOCKING	98
-		1	1803258-1	FRONT STRIP GUIDE	96
-		1	2168083-6	SCR, SKT HD CAP, RoHS, M5 X 65	93
-		2	1-2168083-3	SCR, SKT HD CAP, RoHS, M3 X 16	85
-		1	455888-6	SPACER, CRIMPER	82
-		1	5-240641-1	SPACER	81
-		1	1803607-1	DOCUMENTATION PACKAGE	71
-		1	2119740-1	TAG,IDENTIFICATION	67
-		2	2168078-1	SCREW, DRIVE, RH, RoHS, 2 x .188	66
-		2	2-18032-5	SCR, SET, FLT PNT, M5 X 20.0	61
1	-	1	5-18022-5	SCR, HEX HD CAP, M4 X 6.0	59
	-	1	1-1338683-0	FEED PAWL	56
	-	2	2168083-8	SCR, SKT HD CAP, RoHS, M4 X 16	53
	-	1	18023-9	SCR, SKT HD CAP M4 X 6.0	49
	-	1	1803602-1	SCR, BHSC, RoHS (M8 X 25)	41
	-	2	2168083-1	SCR, SKT HD CAP, RoHS, M3 X 8.0	33
	-	1	2-2305692-3	PLATE, REAR STRIP GUIDE	29
	-	2	22281-8	SPRING, COMPRESSION	27
	-	1	356835-1	LEVER, DRAG RELEASE	26
	-	1	240792-3	DRAG, TERMINAL	25
	-	1	2-189124-4	GUIDE, FRONT STRIP	24
	-	1	980371-4	SCR, SKT HD SHLDR 5.0 DIA X 6.0	23
	-	1	2168083-2	SCR, SKT HD CAP, RoHS, M4 X 8.0	21
	-	1	1-18028-2	WASHER, FLAT, REG M4	20
	-	1	2119533-1	STRIPPER, SIDE FEED	19
	-	1	1673257-6	SHEAR, FLOATING	17
1	-	2	1-2168083-1	SCR, SKT HD CAP, RoHS, M3 X 6	16
	-	1	1673256-5	PLATE, REAR SHEAR	15
1	-	1	1673255-3	HOLDER, REAR SHEAR	14
	-	1	3-22280-3	SPRING, COMPRESSION	12
1	-	-	-	-	10
	-	-	-	-	9
1	1	1	3-1803252-7	ANVIL, COMBINATION	8
	-	-	-	-	7
1	-	1	2-690468-5	DEPRESSOR SHEAR, REAR	6
	-	-	-	-	5
1	-	1	6-238011-5	BLOCK, CRIMPER SPACER	4
	1	1	8-1803187-9	CRIMPER, INSULATION F	3
1	-	1	1-455888-0	SPACER, CRIMPER	2
	1	1	8-1633588-7	CRIMPER, WIRE	1

THIS DRAWING IS A CONTROLLED DOCUMENT FOR THE CUSTOMER'S INFORMATION. IT IS SUBJECT TO CHANGE WITHOUT NOTICE. THE CUSTOMER'S ORGANIZATION SHOULD BE CONTACTED FOR THE LATEST EDITION.				OWN M. HERR	29SEP2016	TE Connectivity Harrisburg, PA 17105-3608	
DIMENSIONS:				CHK T. ELBIN	29SEP2016	NAME	
mm				APVD T. ELBIN	29SEP2016	Ocean Side Feed Applicator	
				PRODUCT SPEC		SIZE	
				TOLERANCES UNLESS OTHERWISE SPECIFIED:		APPLICATION SPEC	
				0 PLC ±"		CAGE CODE	
				1 PLC ±"		DRAWING NO	
				2 PLC ±"		RESTRICTED TO	
				3 PLC ±"		00779	
				4 PLC ±"		©=2836439	
				ANGLES		WEIGHT	
				FINISH		A	
MATERIAL				-		Customer Accessible Production Drawing	
				-		SCALE 1:2	
						SHEET 3 OF 4	
						REV B	

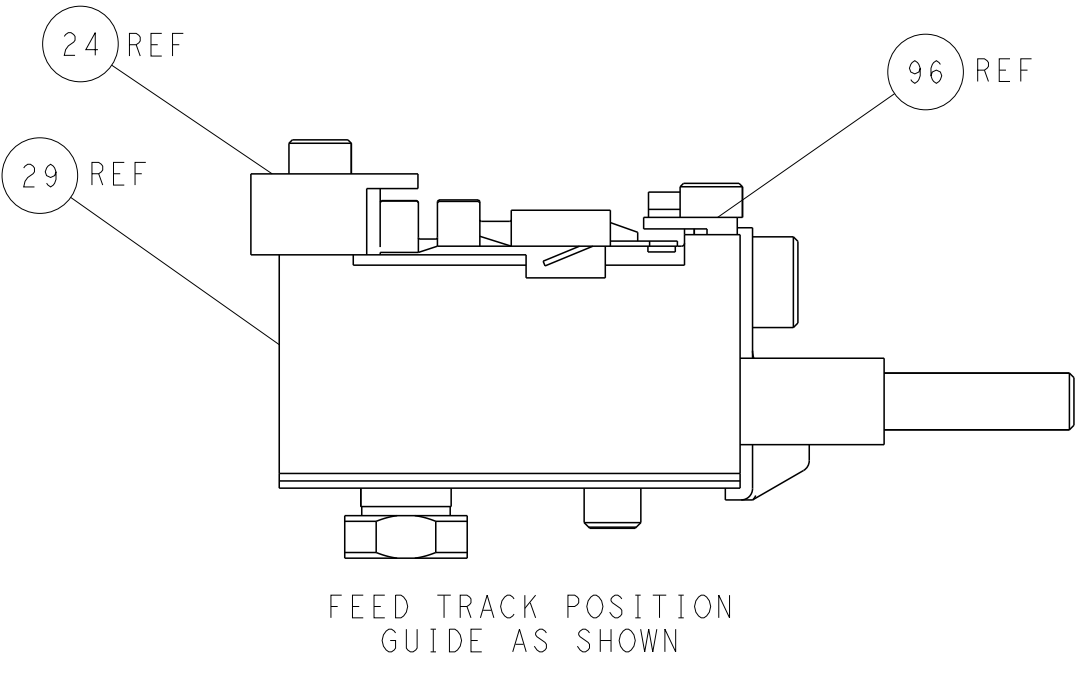
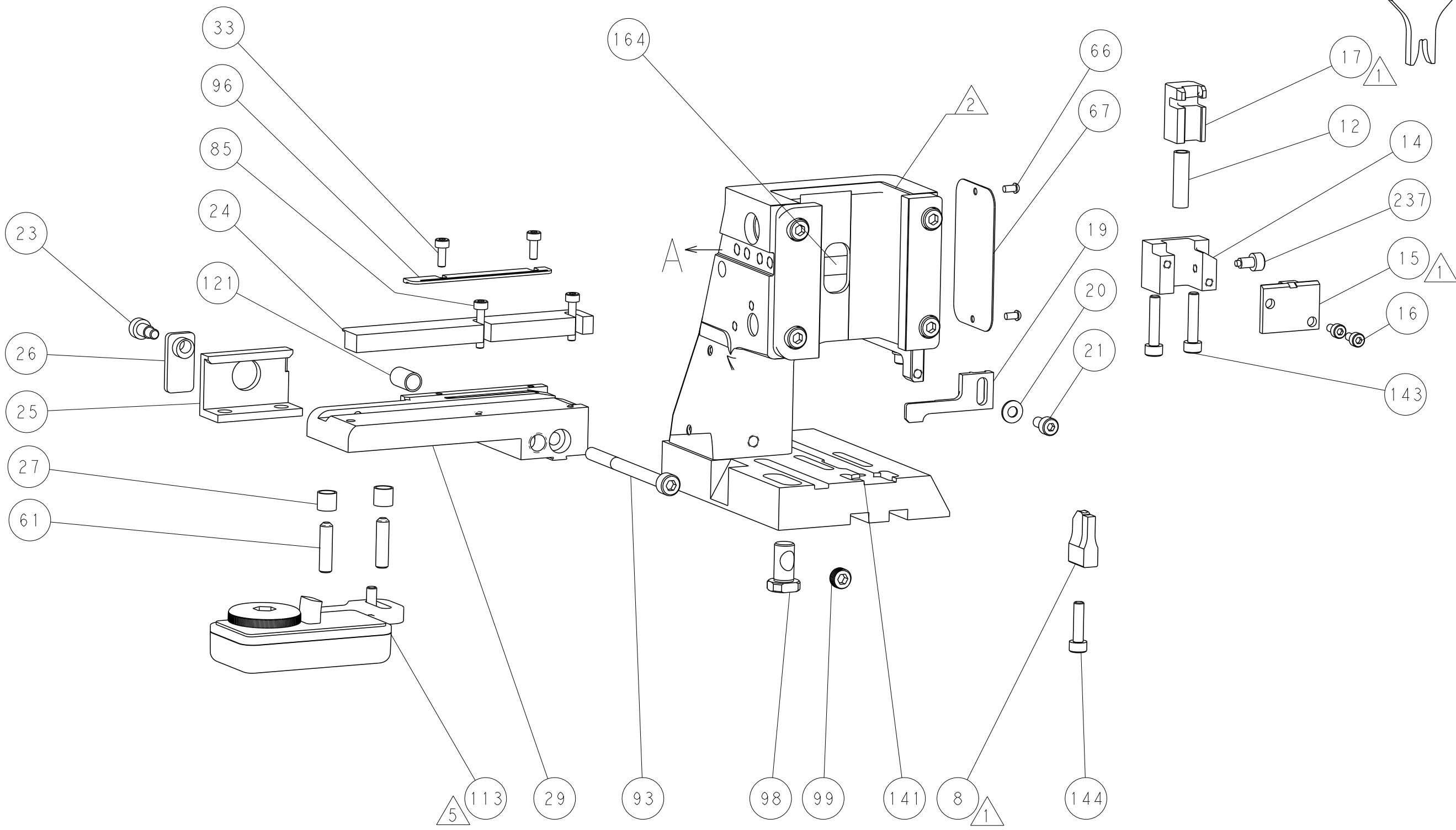
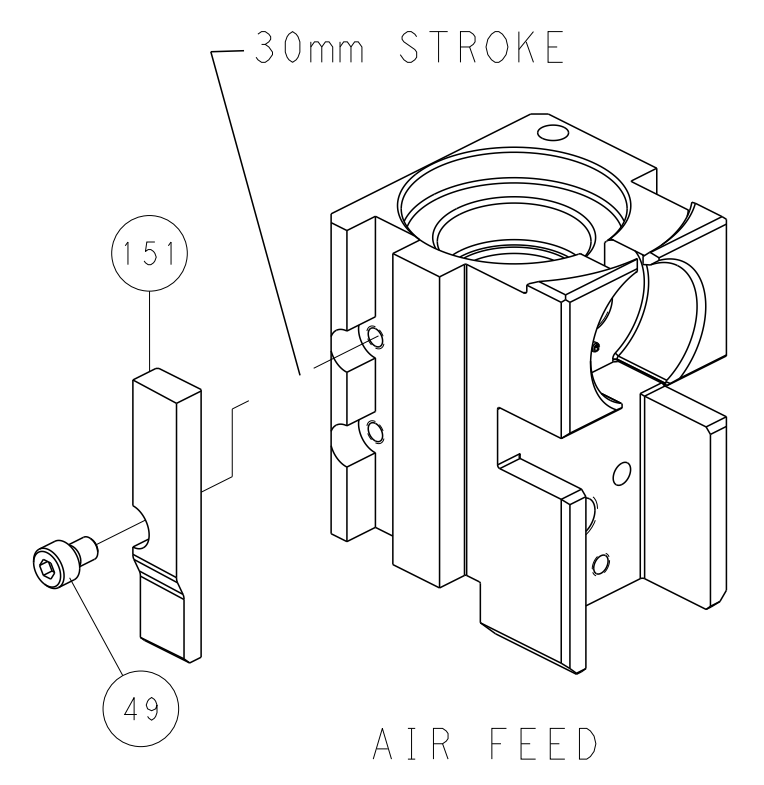
SHEETS 1 & 2 ARE NOT REQUIRED FOR PACIFIC VERSION

LOC		DIST		REVISIONS					
A		66		P	LTR	DESCRIPTION	DATE	DWN	APVD
				-	-	SEE SHEET 1	-	-	-

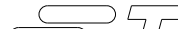

FEED TYPE
PNEUMATIC



CAM POSITION



PACIFIC VERSION
Shown on sheets 3 of 4 & 4 of 4
(Atlantic version shown on sheets 1 of 4 & 2 of 4)

THIS DRAWING IS A CONTROL DRAWING FOR THE (TE CONNECTIVITY CORPORATION) IT IS SUBJECT TO CHANGE WITHOUT NOTICE. THE USER SHALL BE RESPONSIBLE FOR THE LATEST REVISIONS.				DWN	M. HERR	29SEP2016	 TE Connectivity Harrisburg, PA 17105-3608												
				CHK	T. ELBIN	29SEP2016													
				APVD	T. ELBIN	29SEP2016	NAME												
<div>DIMENSIONS:</div> <div>mm</div> 				TOLERANCES UNLESS OTHERWISE SPECIFIED:			Ocean Side Feed Applicator												
				0 PLC ± 1 PLC ± 2 PLC ± 3 PLC ± 4 PLC ± ANGLES ±															
MATERIAL				FINISH			WEIGHT		SIZE		CAGE CODE	DRAWING NO	RESTRICTED TO						
							A 00779		C=2836439										
Customer Accessible Production Drawing										SCALE		1:2		SHEET	4	OF	4	REV	B