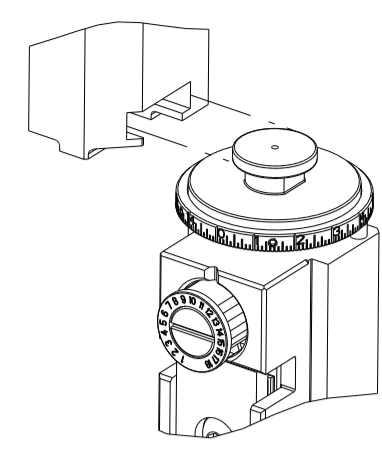


PART NUMBER	REVISION	DESCRIPTION	FEED TYPE
2836276-1	C	FINE CRIMP HEIGHT ADJUST	MECHANICAL
2836276-2	C	FINE CRIMP HEIGHT ADJUST	PNEUMATIC
7-2836276-1	C	MECHANICAL AND CRIMP TOOLING KIT	MECHANICAL
7-2836276-2	C	PNEUMATIC AND CRIMP TOOLING KIT	PNEUMATIC
7-2836276-7	A	CRIMP TOOLING KIT	-

ATLANTIC VERSION TERMINATOR INTERFACE ADAPTER



APPLICATOR DATA		
CRIMP	SIZE	TYPE
WIRE	1.78 mm [.070]	F
INSUL	2.70 mm [.106]	F

APPLICATOR INSTRUCTIONS 408-35042

TERMINAL DATA: DELPHI PACKARD TERMINAL DELPHI PACKARD CRIMP SPECIFICATION			
TERMINAL NAME: TERMINAL			
WIRE STRIP LENGTH	INSULATION DIAMETER RANGE		
4.53-5.29 mm [.178-.208 IN]	1.85-2.40 mm [.073-.094 IN]		
TERMINAL APPLICATION SPECIFICATION 12146448 PAGE 5 OF 26 Rev 2013-10-30			
TERMINALS APPLIED			
TE TERMINAL	DELPHI PACKARD TERMINAL	TE TERMINAL	DELPHI PACKARD TERMINAL
286848-1	12146448		

WIRE SIZE	CRIMP HEIGHT mm [INCH]	CRIMP HEIGHT REFERENCE SETTING
1.00mm2	1.30+/-0.05 [.051+/- .002]	7.1
0.80mm2	1.05+/-0.05 [.041+/- .002]	10.2

- 1. RECOMMENDED SPARE PARTS
- 2. REFER TO SUPPLIED INSTRUCTION SHEET FOR CLEANING, LUBRICATION AND STORAGE OF APPLICATOR.
- 3. APPLY PART NUMBER 2-23419-6 LOCTITE TO THREADS OF ITEM 242.
- 4. CRIMP HEIGHT REFERENCE SETTING WAS THE SETTING USED WHEN THE APPLICATOR WAS QUALIFIED AT THE FACTORY. ADJUSTMENT MAY BE NECESSARY WHEN RUNNING APPLICATOR IN THE FIELD.
- 5. UNLESS SPECIFIED OTHERWISE TORQUE VALUES SHALL BE USED PER DOCUMENT, 101-35000.
- 6. TERMINAL LUBRICANT IS RECOMMENDED

***WARNING**
 ON INSTALLATION, SET WIRE DISC TO CRIMP HEIGHT REFERENCE SETTING FOR LARGEST WIRE SIZE. CRIMP HEIGHT REFERENCE SETTINGS GREATER THAN THE VALUE SHOWN MAY CAUSE DAMAGE TO THE CRIMP TOOLING, REFER TO THE INSTRUCTION SHEET FOR PROPER SETUP AND ADJUSTMENTS.

ATLANTIC VERSION
 Shown on sheets 1 of 4 & 2 of 4
 (Pacific version shown on sheets 3 of 4 & 4 of 4)

LOC	DIST	REVISIONS					
		P	LTN	DESCRIPTION	DATE	OWN	APVD
A	66	1		DEVELOPMENT	8APR2016	JH	LZ
		A		RELEASED	17MAY2016	JH	CT
		B		ECR-17-016822	16NOV2017	KH	JAH
		C		ECR-22-134712	01APR2022	FZ	TE

1	-	1	1	1	1	2280441-1	INSERT, SHEAR	282	
	-	1	-	1	-	2119641-1	FEED CAM, AIR FEED	248	
	-	1	1	1	1	2119082-4	CAM, SNAIL, INSULATION ADJUSTMENT	244	
	-	1	1	1	1	2079764-1	WASHER, WAVE SPRING, CREST-TO-CREST	243	
3	-	1	1	1	1	2119083-1	RETAINER, INSULATION DIAL	242	
	-	2	2	2	2	7-18023-7	SCR, SKT HD CAP M3 X 4.0	241	
	-	-	1	-	-	2119580-1	MECHANICAL FEED ASSEMBLY	239	
	-	1	-	1	-	2844940-1	AIR FEED MODULE	238	
	-	1	1	1	1	356885-4	STOP, SHEAR	237	
	-	REF	REF	REF	REF	994970-2	COUNTER, MAGNETIC	164	
6	-	1	1	1	1	2119955-1	ASSY, LUBRICATOR, SIDE FEED	113	
	-	1	1	1	1	2844908-1	SCREW, LOCKING	99	
	-	1	1	1	1	2844907-1	POST, LOCKING	98	
	-	1	1	1	1	455888-6	SPACER, CRIMPER	82	
	-	1	1	1	1	6-240641-0	SPACER	81	
	-	1	1	1	1	1803607-3	DOCUMENTATION PACKAGE	71	
	-	1	1	1	1	2119740-1	TAG, IDENTIFICATION	67	
	-	2	2	2	2	2168078-1	SCREW, DRIVE, RH, RoHS, 2 x .188	66	
	-	1	1	1	1	2168083-2	SCR, SKT HD CAP, RoHS, M4 X 8.0	60	
	-	1	1	1	1	5-18022-5	SCR, HEX HD CAP, M4 X 6.0	59	
	-	1	1	1	1	1338685-1	PAWL, FEED	56	
	-	4	4	4	4	2168083-3	SCR, SKT HD CAP, RoHS, M4 X 12.0	54	
	-	2	2	2	2	2168083-9	SCR, SKT HD CAP, RoHS, M4 X 20	53	
	-	1	2	1	2	18023-9	SCR, SKT HD CAP M4 X 6.0	49	
	-	-	1	-	-	2119652-1	FEED CAM, PRE FEED	48	
	-	-	1	-	-	2119653-1	FEED CAM, POST FEED	47	
	-	1	1	1	1	1803583-9	APPLICATOR BASIC ASSEMBLY, SF	46	
	-	1	1	1	1	1803515-1	RAM ASSEMBLY, SF ATLANTIC	44	
	-	1	1	1	1	1803602-1	SCR, BHSC, RoHS (M8 X 25)	41	
	-	2	2	2	2	2079383-5	SCR, BHSC, RoHS (M4 X 20)	33	
	-	2	2	2	2	2-2844962-3	SPACER, CYLINDRICAL, STRIP GUIDE	30	
	-	1	1	1	1	2844992-1	ASSEMBLY, STRIP GUIDE	29	
	-	1	1	1	1	455888-3	SPACER, CRIMPER	28	
	-	1	1	1	1	1320928-2	STRIP GUIDE	24	
	-	1	1	1	1	2168083-2	SCR, SKT HD CAP, RoHS, M4 X 8.0	21	
	-	2	2	2	2	1-18028-2	WASHER, FLAT, REG M4	20	
	-	1	1	1	1	2119533-1	STRIPPER, SIDE FEED	19	
1	-	1	1	1	1	690463-1	FLOATING SHEAR, REAR	17	
	-	2	2	2	2	1-2168083-1	SCR, SKT HD CAP, RoHS, M3 X 6	16	
	-	1	1	1	1	690464-1	SHEAR PLATE, REAR	15	
	-	1	1	1	1	2119862-1	SHEAR HOLDER, REAR	14	
1	-	1	1	1	1	2119806-1	INSERT, SHEAR	13	
	-	2	2	2	2	3-22280-3	SPRING, COMPRESSION	12	
	-	1	1	1	1	1-356885-4	STOP, SHEAR	11	
	-	1	1	1	1	2119805-1	SHEAR HOLDER, FRONT	10	
	-	1	1	1	1	1803095-6	FLOATING SHEAR, FRONT	9	
	-	1	2	2	1	1	3-1803058-8	ANVIL, COMBINATION	8
	-	-	-	-	-	-	-	7	
	-	1	1	1	1	690468-1	DEPRESSOR SHEAR, REAR	6	
	-	1	1	1	1	2119757-4	DEPRESSOR, SHEAR	5	
	-	1	1	1	1	1-238011-7	BLOCK, CRIMPER SPACER	4	
1	-	1	2	2	1	1	6-1803187-9	CRIMPER, INSULATION F	3
	-	1	1	1	1	455888-7	SPACER, CRIMPER	2	
1	-	1	2	2	1	1	7-456404-1	CRIMPER, WIRE PREMIUM	1

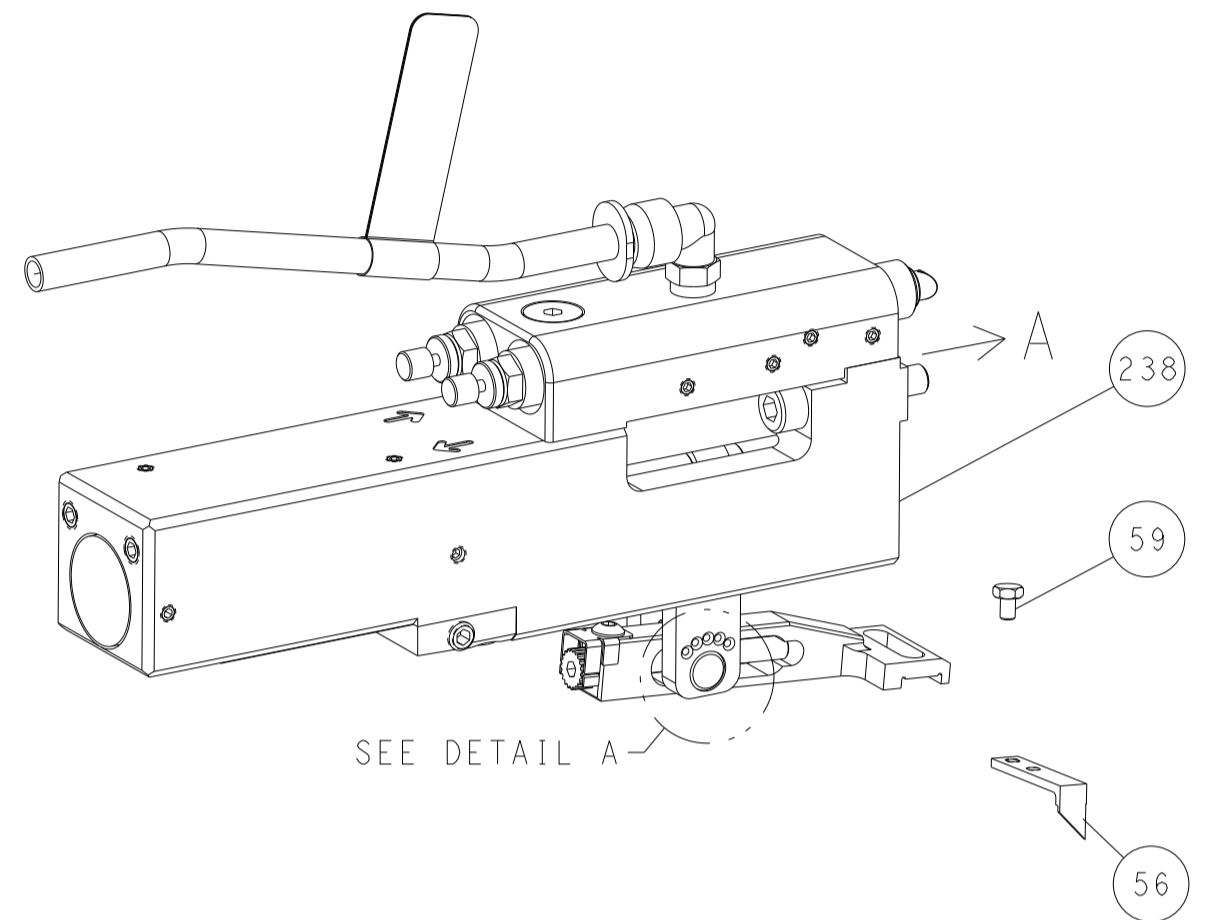
DIMENSIONS:		TOLERANCES UNLESS OTHERWISE SPECIFIED:		MATERIAL:		FINISH:		WEIGHT:		SCALE:		SHEET:		REV:	
mm	0 PLC ±	1 PLC ±	2 PLC ±	3 PLC ±	4 PLC ±	ANGLES	FINISH								
APPLICATOR SPEC		APPLICATION SPEC		MATERIAL		FINISH		WEIGHT		SCALE		SHEET		REV	
APPLICATOR SPEC		APPLICATION SPEC		MATERIAL		FINISH		WEIGHT		SCALE		SHEET		REV	
APPLICATOR SPEC		APPLICATION SPEC		MATERIAL		FINISH		WEIGHT		SCALE		SHEET		REV	

LOC	DIST	REVISIONS			
		REV	DATE	BY	APPV
A	66	-	SEE SHEET 1	-	-

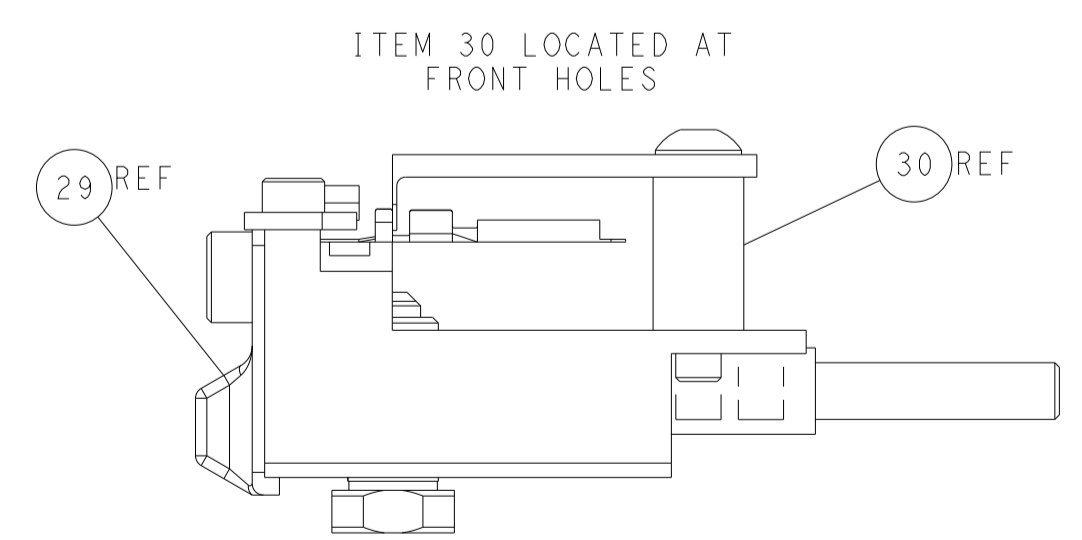
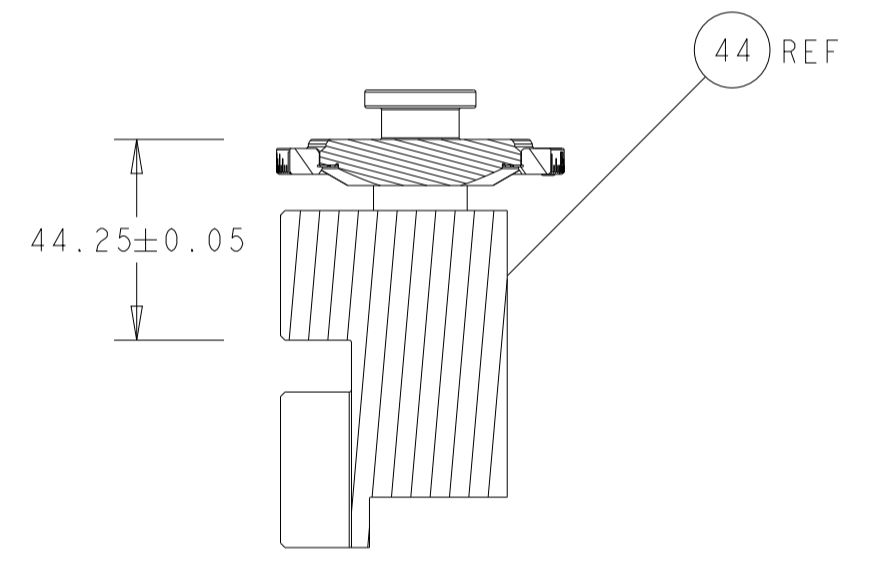
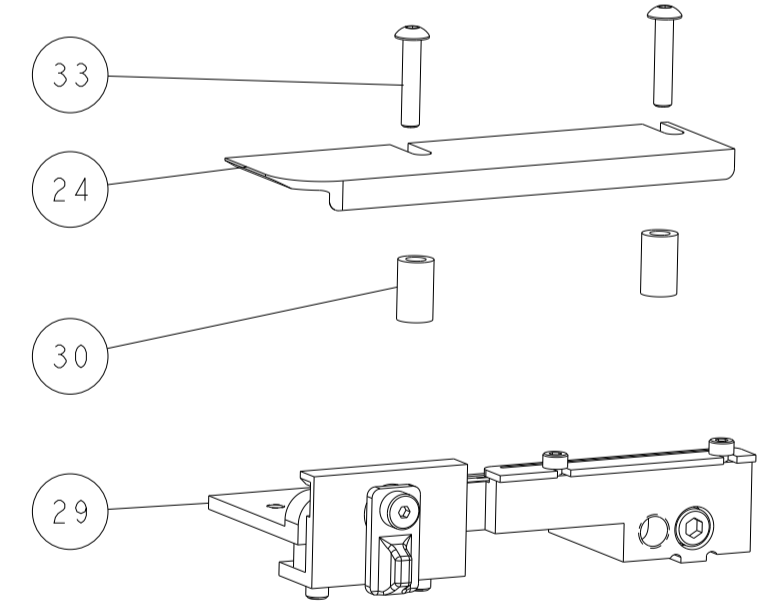
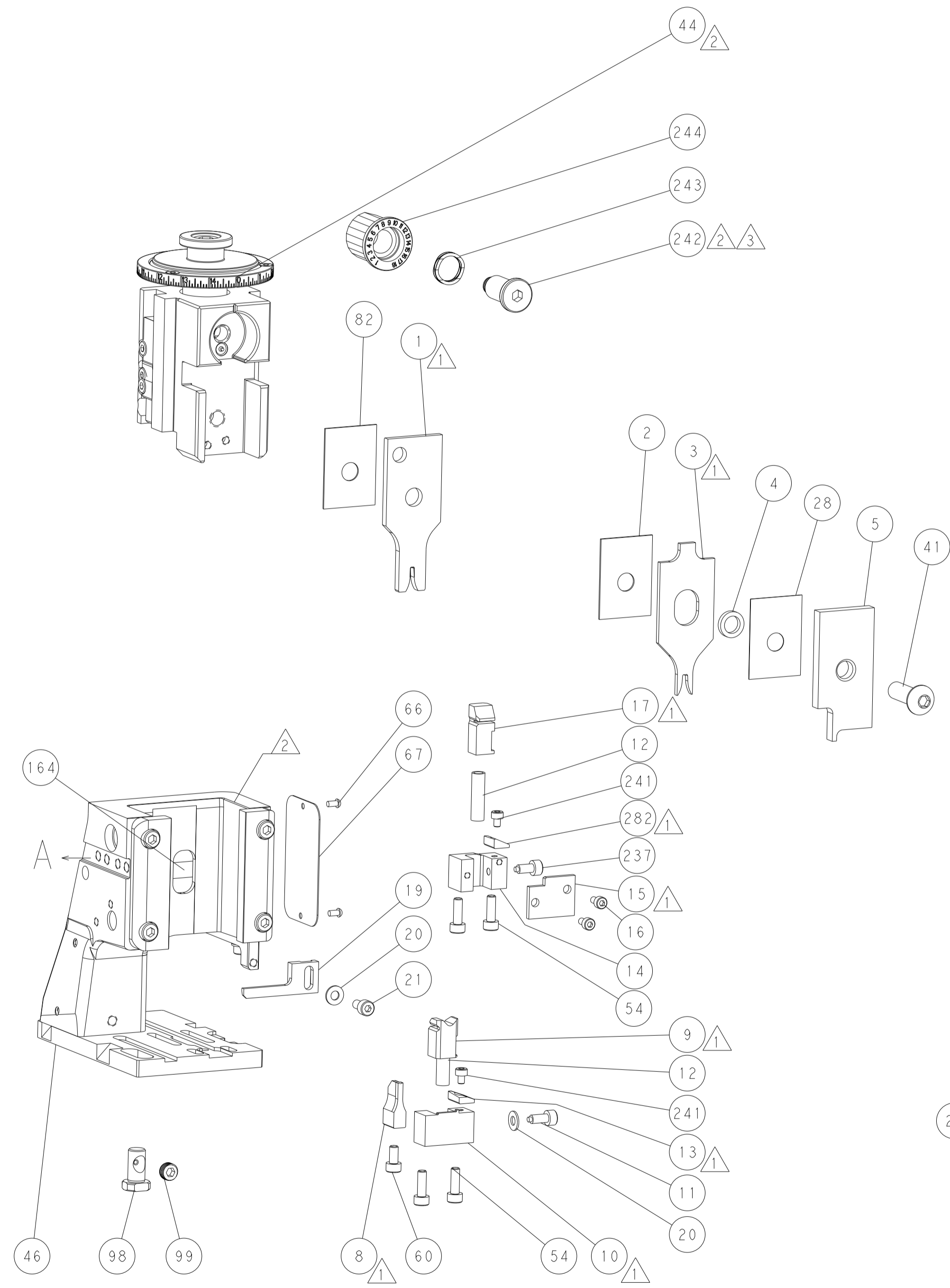
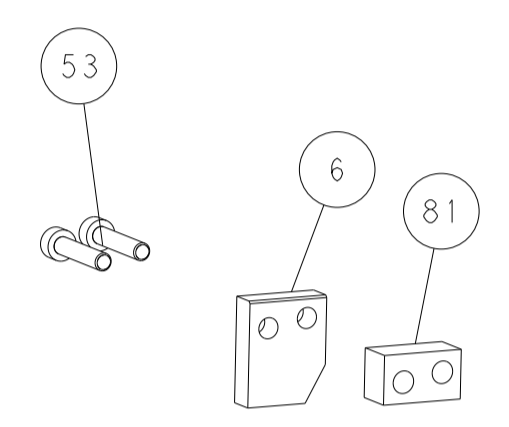
FEED TYPE MECHANICAL



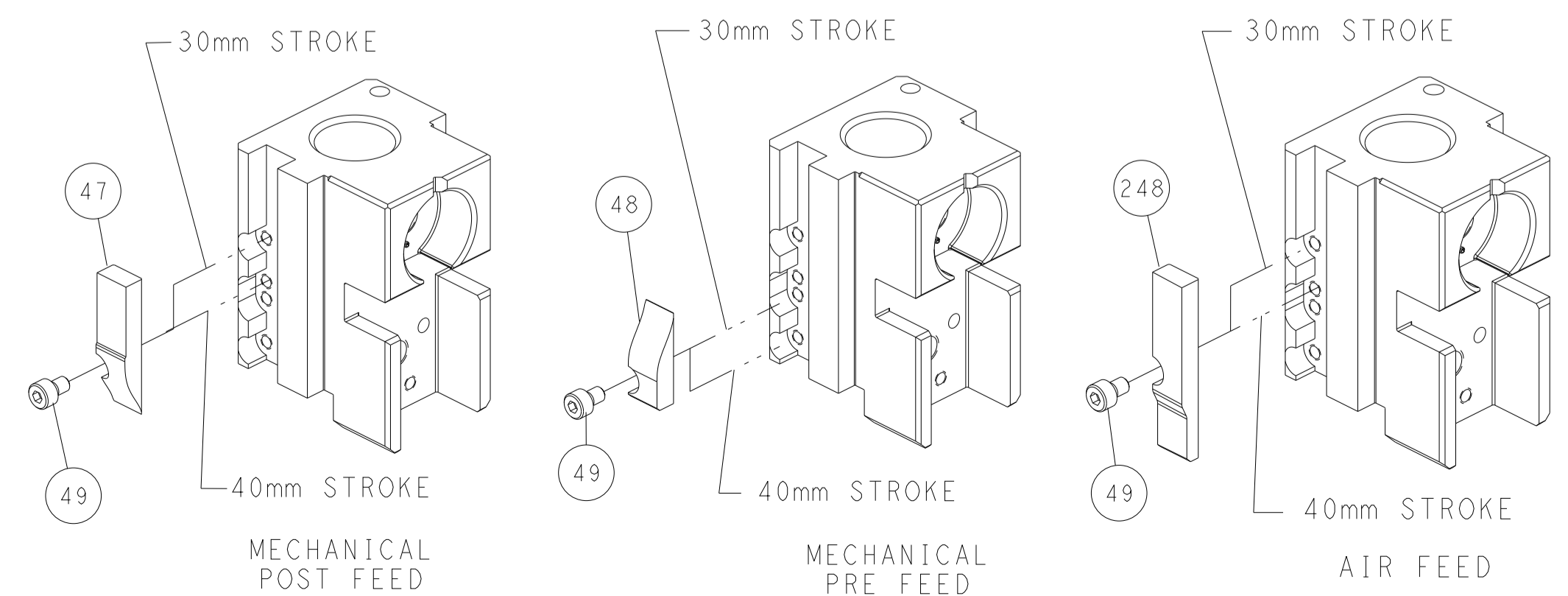
PNEUMATIC



FEED SPRING SETTING POSITION (SHOWN FROM REAR SIDE)



CAM POSITIONS



ATLANTIC VERSION
 Shown on sheets 1 of 4 & 2 of 4
 (Pacific version shown on sheets 3 of 4 & 4 of 4)

<small>THIS DRAWING IS UNPUBLISHED. RELEASED FOR PUBLICATION. COPYRIGHT 20 BY TYCO ELECTRONICS CORPORATION. ALL RIGHTS RESERVED.</small>		DWN: J. HOU CHK: L. ZHANG APVD: L. ZHANG	DATE: 8APR2016 DATE: 8APR2016 DATE: 8APR2016	NAME: TE Connectivity Harrisburg, PA 17105-3608
DIMENSIONS: mm TOLERANCES UNLESS OTHERWISE SPECIFIED: 0 PLC ± 1 PLC ± 2 PLC ± 3 PLC ± 4 PLC ± ANGLES FINISH ±	MATERIAL:	PRODUCT SPEC: APPLICATION SPEC: WEIGHT:	SIZE: A1 CAGE CODE: 00779 DRAWING NO: C=2836276	RESTRICTED TO:
Customer Accessible Production Drawing		SCALE: 1:2	SHEET: 2 of 4	REV: C

PART NUMBER	REVISION	DESCRIPTION	FEED TYPE
2-2836276-1	C	FINE CRIMP HEIGHT ADJUST	MECHANICAL
2-2836276-2	C	FINE CRIMP HEIGHT ADJUST	PNEUMATIC
7-2836276-7	A	CRIMP TOOLING KIT	-

PACIFIC VERSION TERMINATOR
 INTERFACE ADAPTER



APPLICATOR DATA		
CRIMP	SIZE	TYPE
WIRE	1.78 mm [.070]	F
INSUL	2.70 mm [.106]	F
APPLICATOR INSTRUCTIONS 408-35042		

TERMINAL DATA: DELPHI PACKARD TERMINAL DELPHI PACKARD CRIMP SPECIFICATION			
TERMINAL NAME: TERMINAL			
WIRE STRIP LENGTH		INSULATION DIAMETER RANGE	
4.53-5.29 mm [1.78-.208 IN]		1.85-2.40 mm [.073-.094 IN]	
TERMINAL APPLICATION SPECIFICATION	12146448 PAGE 5 OF 26 Rev 2013-10-30		
TERMINALS APPLIED			
TE TERMINAL	DELPHI PACKARD TERMINAL	TE TERMINAL	DELPHI PACKARD TERMINAL
286848-1	12146448		

WIRE SIZE	CRIMP HEIGHT mm [INCH]	CRIMP HEIGHT REFERENCE SETTING
1.00mm2	1.30+/-0.05 [1.051+/-0.002]	7.1
0.80mm2	1.05+/-0.05 [1.041+/-0.002]	10.2



- 1 RECOMMENDED SPARE PARTS
- 2 REFER TO SUPPLIED INSTRUCTION SHEET FOR CLEANING, LUBRICATION AND STORAGE OF APPLICATOR.
- 3 APPLY PART NUMBER 2-23419-6 LOCTITE TO THREADS OF ITEM 242.
- 4 CRIMP HEIGHT REFERENCE SETTING WAS THE SETTING USED WHEN THE APPLICATOR WAS QUALIFIED AT THE FACTORY. ADJUSTMENT MAY BE NECESSARY WHEN RUNNING APPLICATOR IN THE FIELD.
- 5. UNLESS SPECIFIED OTHERWISE TORQUE VALUES SHALL BE USED PER DOCUMENT, 101-35000.
- 6 TERMINAL LUBRICANT IS RECOMMENDED

***WARNING**
 ON INSTALLATION, SET WIRE DISC TO CRIMP HEIGHT REFERENCE SETTING FOR LARGEST WIRE SIZE. CRIMP HEIGHT REFERENCE SETTINGS GREATER THAN THE VALUE SHOWN MAY CAUSE DAMAGE TO THE CRIMP TOOLING, REFER TO THE INSTRUCTION SHEET FOR PROPER SETUP AND ADJUSTMENTS.

PACIFIC VERSION
 Shown on sheets 3 of 4 & 4 of 4
 (Atlantic version shown on sheets 1 of 4 & 2 of 4)

LOC	DIST	REVISIONS					
A	66	P	LTN	DESCRIPTION	DATE	OWN	APVD
		-		SEE SHEET 1			

1	-	1	1	2280441-1	INSERT, SHEAR		282
	-	1	1	2119082-4	CAM, SNAIL, INSULATION ADJUSTMENT		244
	-	1	1	2079764-1	WASHER, WAVE SPRING, CREST-TO-CREST		243
3	-	1	1	2119083-1	RETAINER, INSULATION DIAL		242
	-	2	2	7-18023-7	SCR, SKT HD CAP M3 X 4.0		241
	-	-	1	2119580-1	MECHANICAL FEED ASSEMBLY		239
	-	1	-	2844940-1	AIR FEED MODULE		238
	-	1	1	356885-4	STOP, SHEAR		237
	REF	REF		994970-2	COUNTER, MAGNETIC		164
	-	1	-	2119641-2	FEED CAM, AIR FEED		151
	-	1	1	2168083-8	SCR, SKT HD CAP, RoHS, M4 X 16		144
	-	4	4	2168083-9	SCR, SKT HD CAP, RoHS, M4 X 20		143
	-	-	1	2119653-2	FEED CAM, POST FEED		142
	-	1	1	1-1803583-0	APPLICATOR BASIC ASSEMBLY, SF		141
	-	1	1	1803516-1	RAM ASSEMBLY, SF PACIFIC		140
6	-	1	1	2119955-1	ASSY, LUBRICATOR, SIDE FEED		113
	-	1	1	2844908-1	SCREW, LOCKING		99
	-	1	1	2844907-1	POST, LOCKING		98
	-	1	1	455888-6	SPACER, CRIMPER		82
	-	1	1	6-240641-0	SPACER		81
	-	1	1	1803607-3	DOCUMENTATION PACKAGE		71
	-	1	1	2119740-1	TAG, IDENTIFICATION		67
	-	2	2	2168078-1	SCREW, DRIVE, RH, RoHS, 2 x .188		66
	-	1	1	5-18022-5	SCR, HEX HD CAP, M4 X 6.0		59
	-	1	1	1338685-1	PAWL, FEED		56
	-	2	2	2168083-9	SCR, SKT HD CAP, RoHS, M4 X 20		53
	-	1	2	18023-9	SCR, SKT HD CAP M4 X 6.0		49
	-	-	1	2119652-1	FEED CAM, PRE FEED		48
	-	1	1	1803602-1	SCR, BHSC, RoHS (M8 X 25)		41
	-	2	2	2079383-5	SCR, BHSC, RoHS (M4 X 20)		33
	-	2	2	2-2844962-3	SPACER, CYLINDRICAL, STRIP GUIDE		30
	-	1	1	2844992-1	ASSEMBLY, STRIP GUIDE		29
	-	1	1	455888-3	SPACER, CRIMPER		28
	-	1	1	1320928-2	STRIP GUIDE		24
	-	1	1	2168083-2	SCR, SKT HD CAP, RoHS, M4 X 8.0		21
	-	2	2	1-18028-2	WASHER, FLAT, REG M4		20
	-	1	1	2119533-1	STRIPPER, SIDE FEED		19
1	-	1	1	690463-1	FLOATING SHEAR, REAR		17
	-	2	2	1-2168083-1	SCR, SKT HD CAP, RoHS, M3 X 6		16
	-	1	1	690464-1	SHEAR PLATE, REAR		15
	-	1	1	2119862-1	SHEAR HOLDER, REAR		14
1	-	1	1	2119806-1	INSERT, SHEAR		13
	-	2	2	3-22280-3	SPRING, COMPRESSION		12
	-	1	1	1-356885-4	STOP, SHEAR		11
1	-	1	1	2119805-1	SHEAR HOLDER, FRONT		10
1	-	1	1	1803095-6	FLOATING SHEAR, FRONT		9
1	1	1	1	3-1803058-8	ANVIL, COMBINATION		8
	-	-	-	-	-		7
	-	1	1	690468-1	DEPRESSOR SHEAR, REAR		6
	-	1	1	2119757-4	DEPRESSOR, SHEAR		5
	-	1	1	1-238011-7	BLOCK, CRIMPER SPACER		4
1	1	1	1	6-1803187-9	CRIMPER, INSULATION F		3
	-	1	1	455888-7	SPACER, CRIMPER		2
1	1	1	1	7-456404-1	CRIMPER, WIRE PREMIUM		1

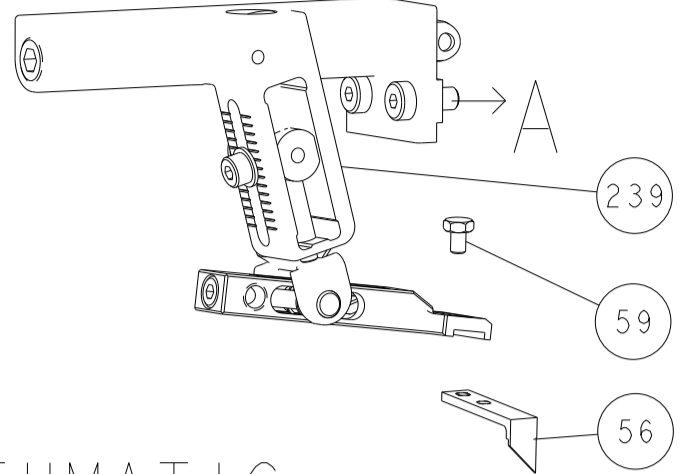
DIMENSIONS:		TOLERANCES UNLESS OTHERWISE SPECIFIED:		MATERIAL:		FINISH:		WEIGHT:		SCALE:		SHEET:		REV:				
mm	0 PLC ±	1 PLC ±	2 PLC ±	3 PLC ±	4 PLC ±	ANGLES	FINISH			Customer Accessible Production Drawing	SCALE	1:2	SHEET	3	OF	4	REV	C



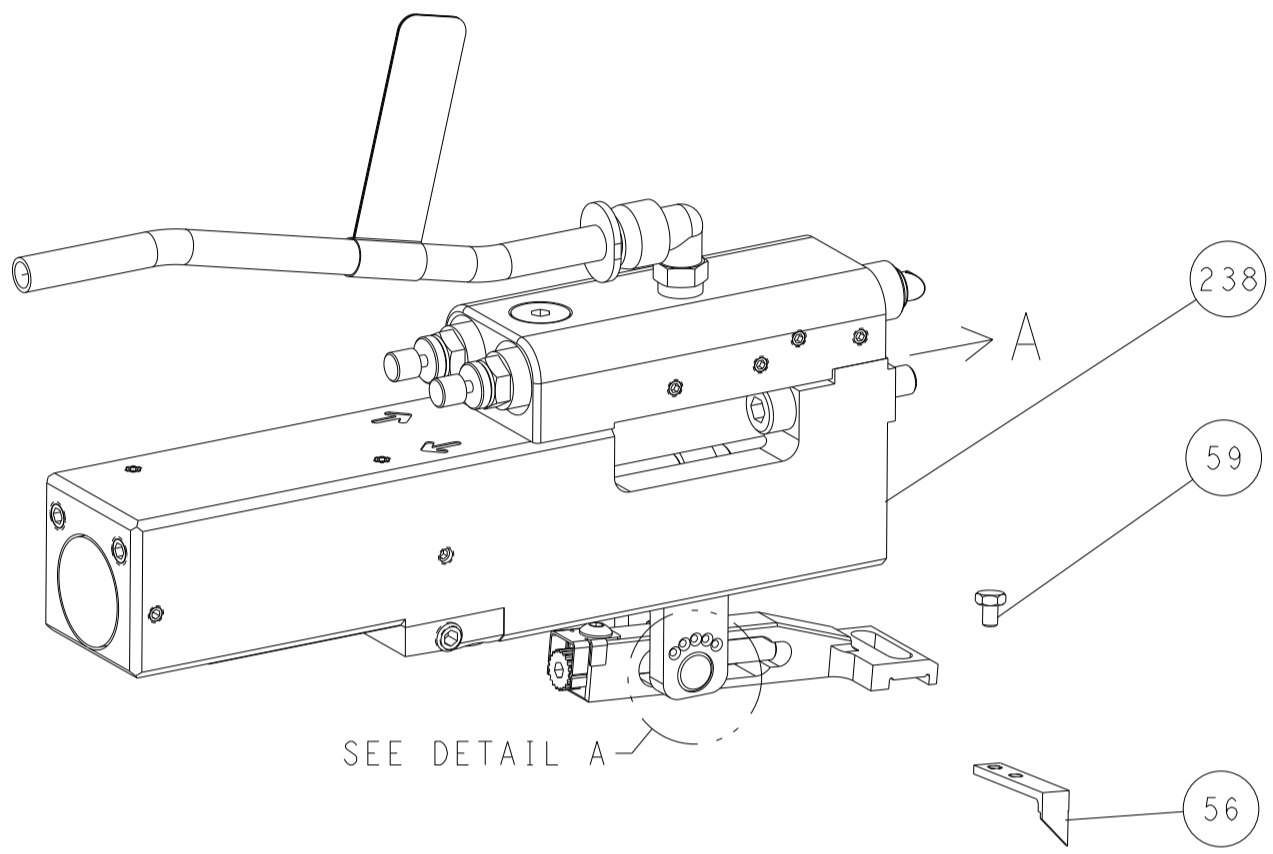
Ocean Side Feed
 Applicator

LOC		DIST		REVISIONS			
A	66	P	LTM	DESCRIPTION	DATE	OWN	APVD
		-		SEE SHEET 1			

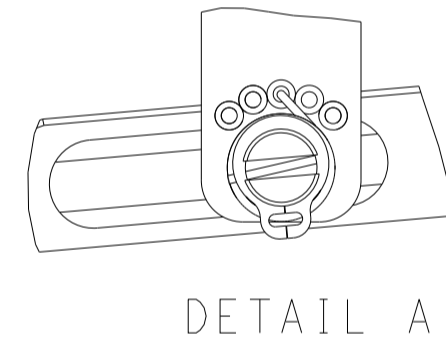
FEED TYPE MECHANICAL



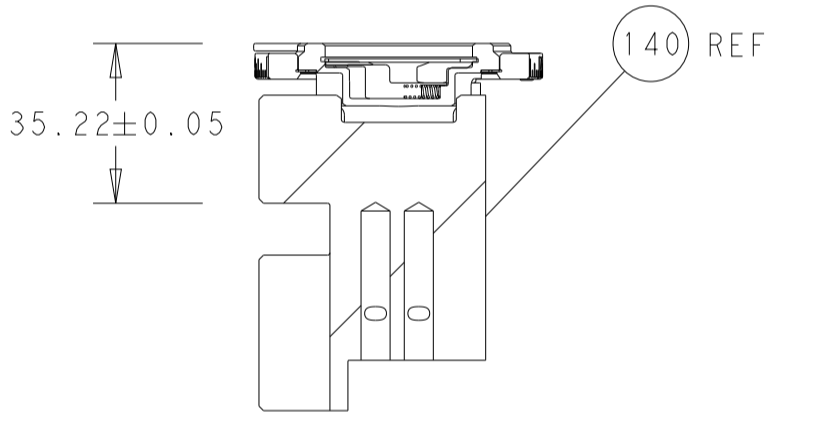
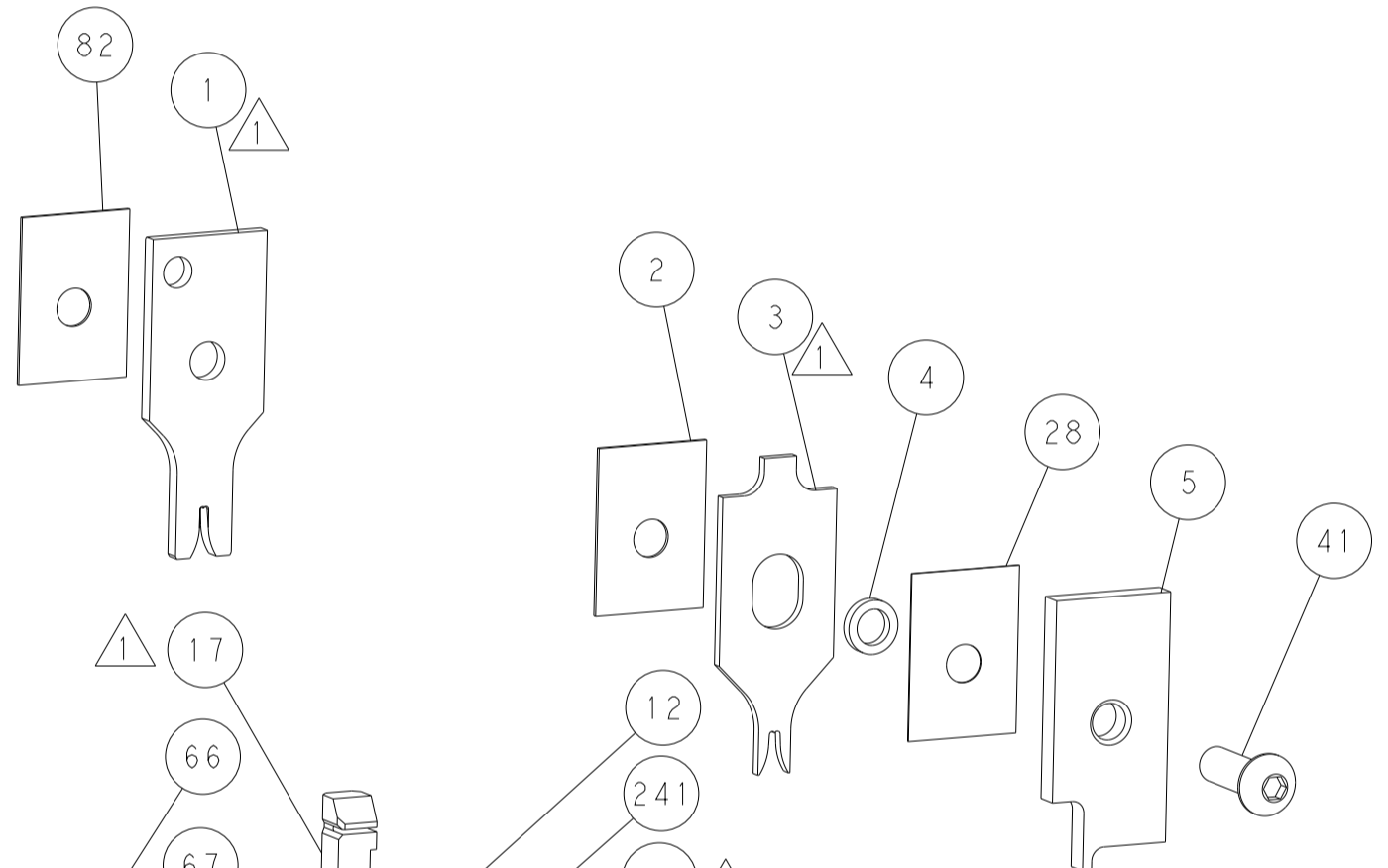
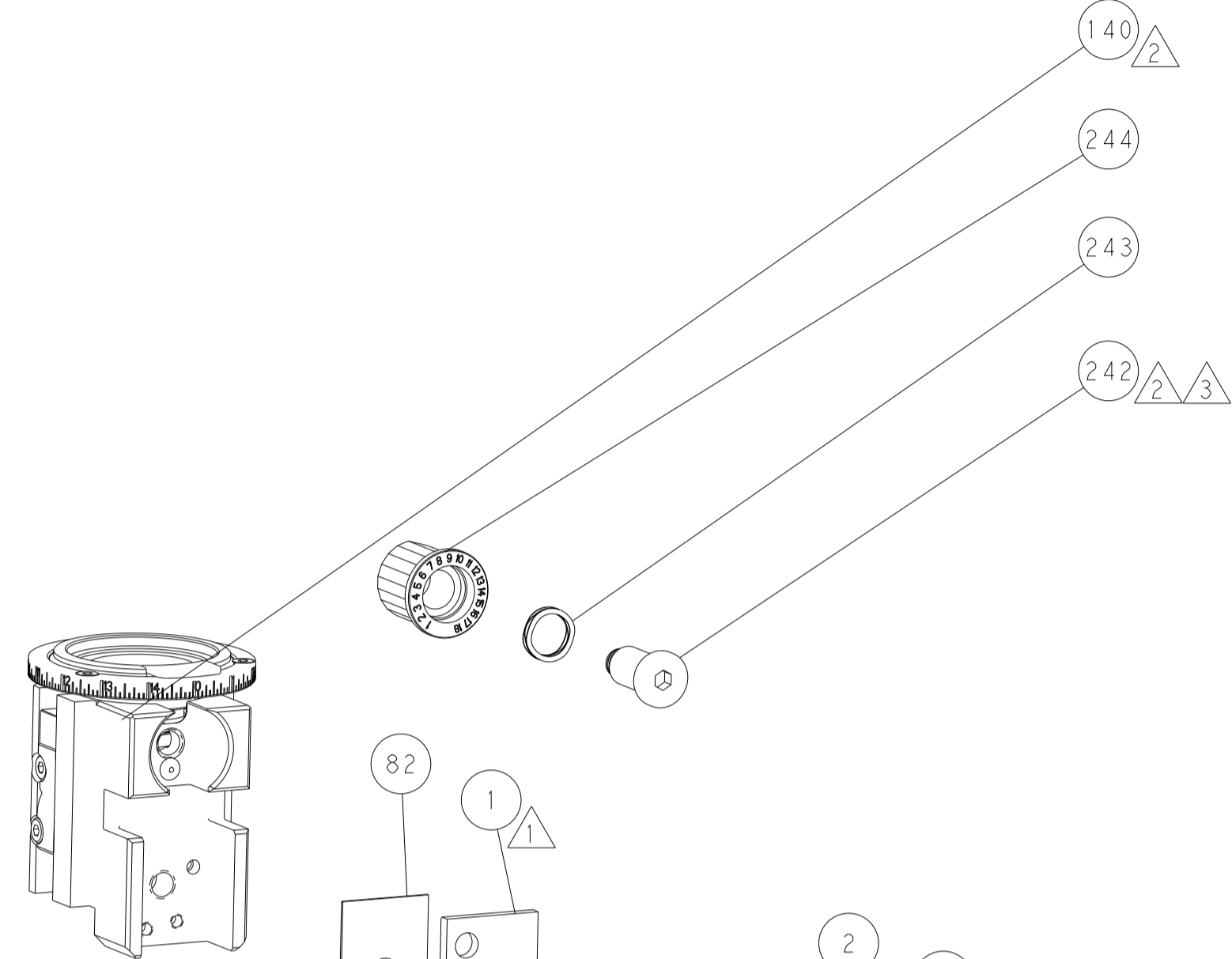
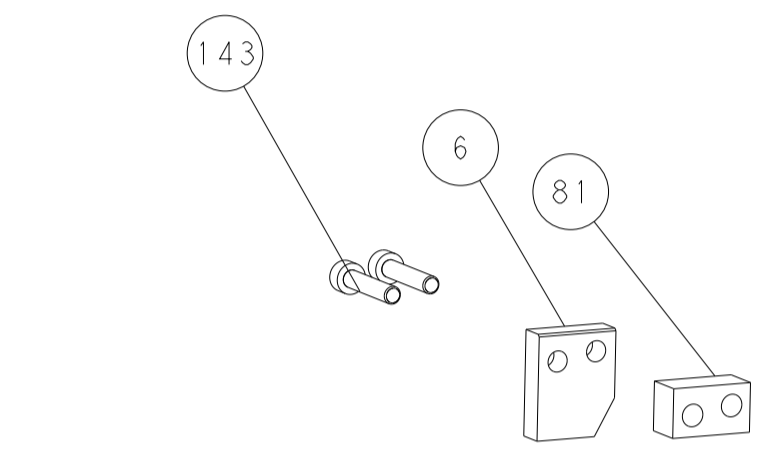
PNEUMATIC



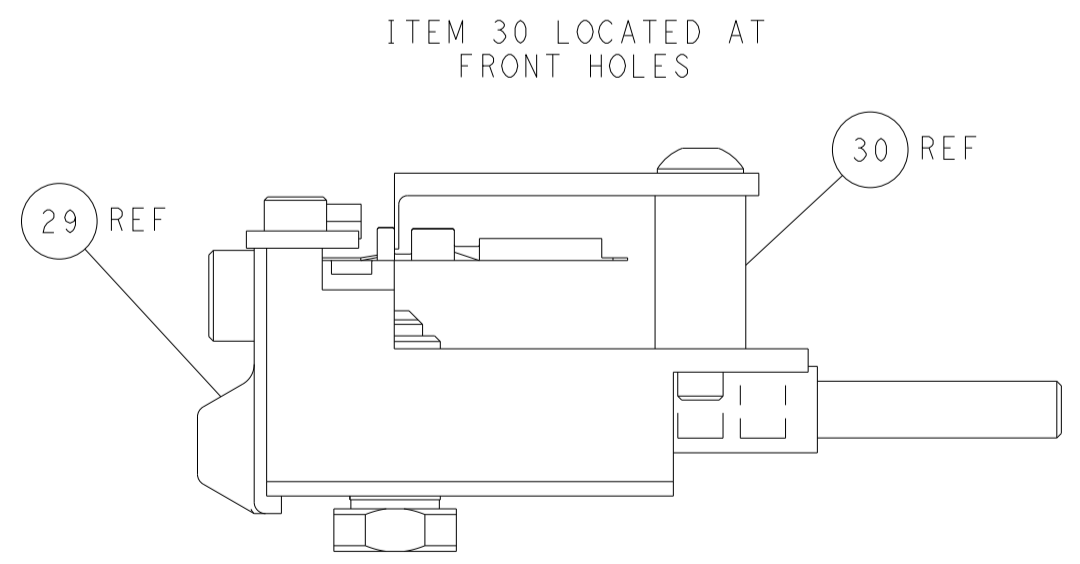
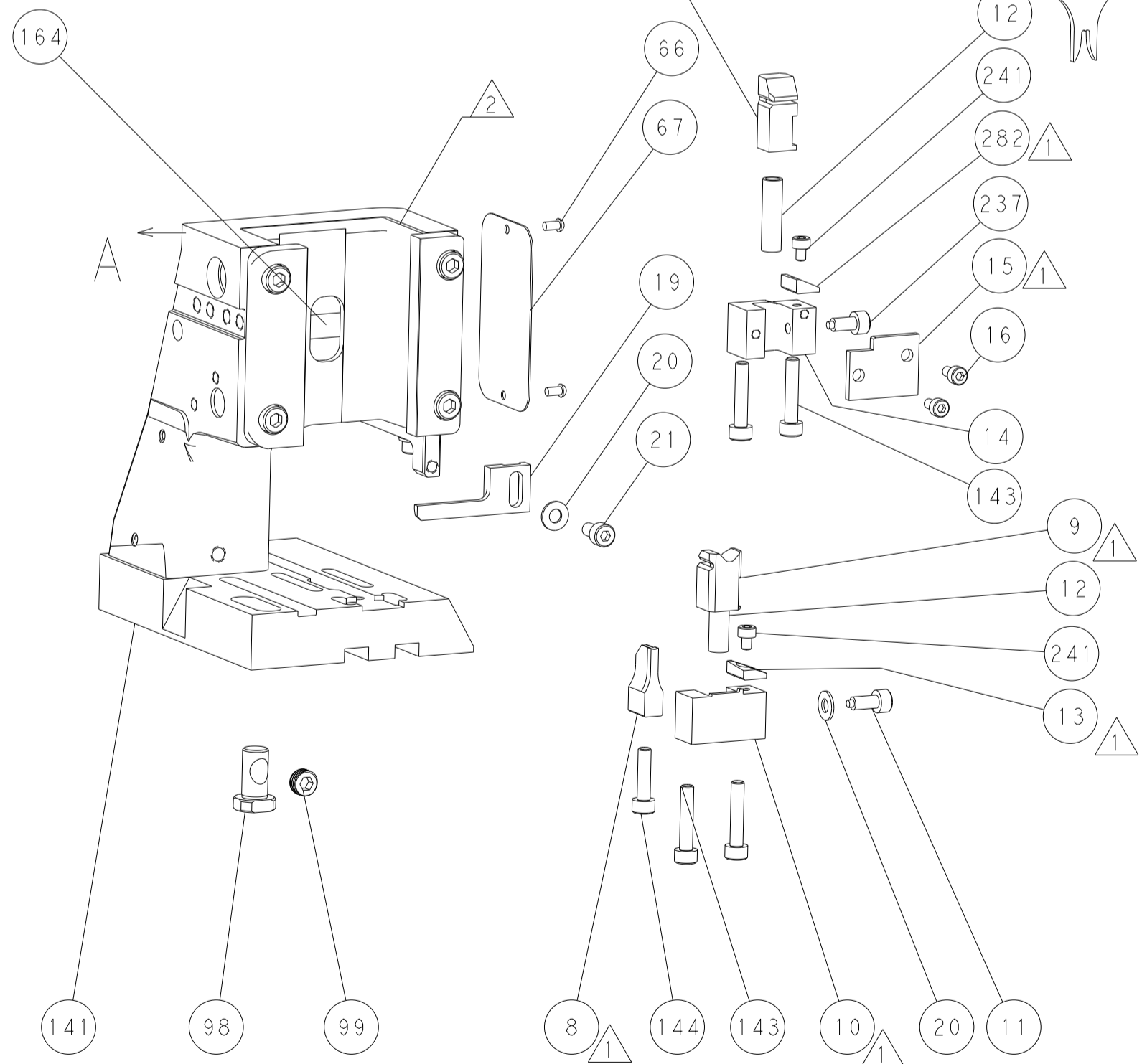
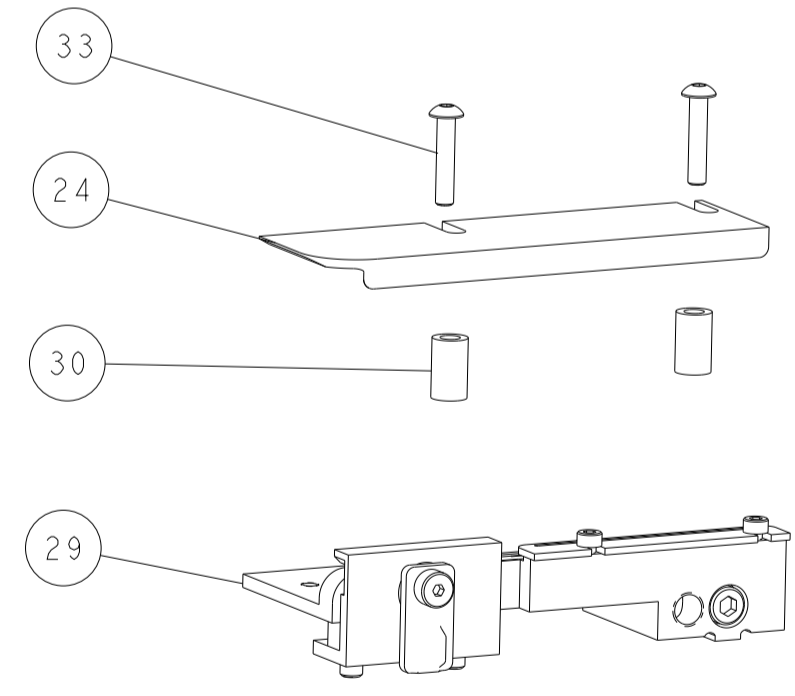
FEED SPRING SETTING POSITION (SHOWN FROM REAR SIDE)



DETAIL A

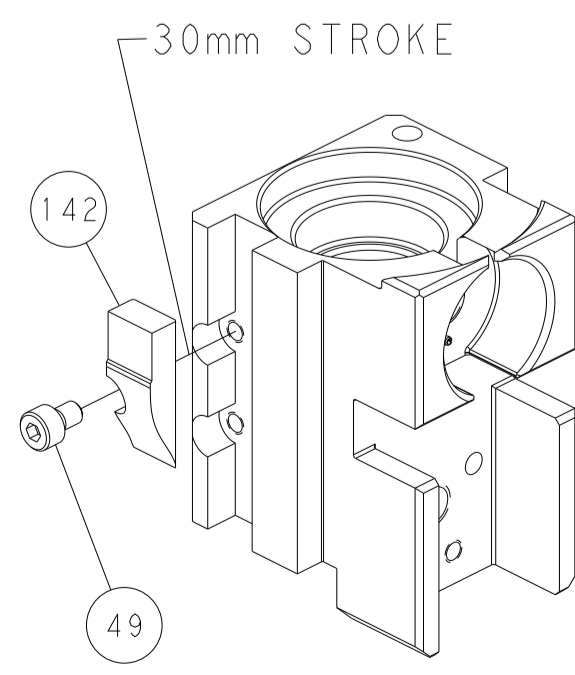


RAM SET-UP

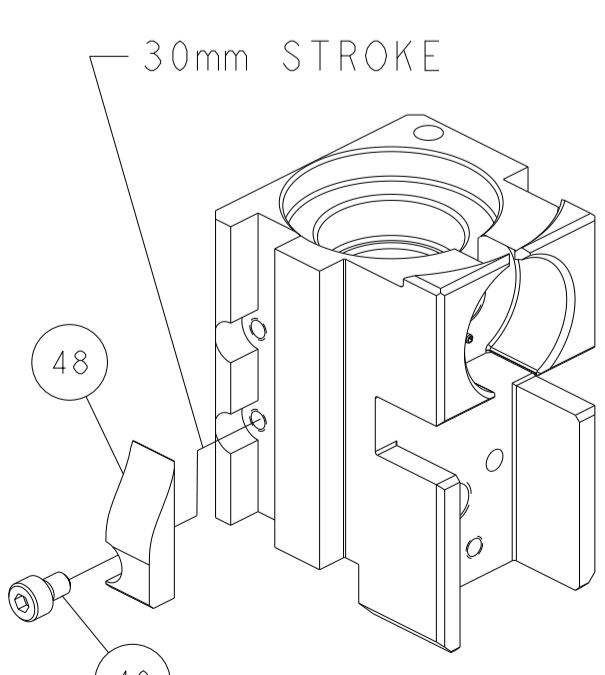


FEED TRACK POSITION
GUIDE BY INSULATION BARREL

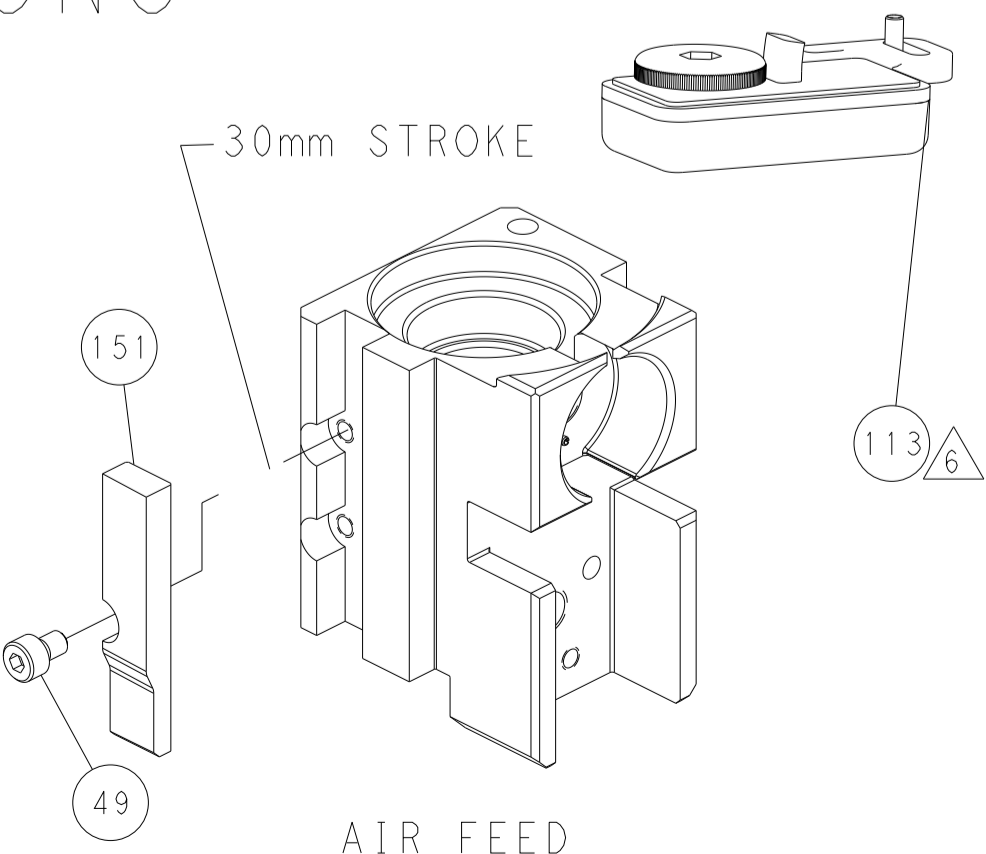
CAM POSITIONS



MECHANICAL
POST FEED



MECHANICAL
PRE FEED



AIR FEED

PACIFIC VERSION
 Shown on sheets 3 of 4 & 4 of 4
 (Atlantic version shown on sheets 1 of 4 & 2 of 4)

<small>THIS DRAWING IS UNPUBLISHED. RELEASED FOR PUBLICATION. ALL RIGHTS RESERVED. © 2016 BY TYCO ELECTRONICS CORPORATION. THIS DRAWING IS CONTROLLED DOCUMENT. FOR THE PROTECTION OF COMPANY AND CUSTOMER INFORMATION, THIS DRAWING IS CONTROLLED DOCUMENT. THIS DRAWING IS CONTROLLED DOCUMENT. THIS DRAWING IS CONTROLLED DOCUMENT.</small>		DWN: J. HOU CHK: L. ZHANG APVD: L. ZHANG DATE: 8APR2016 NAME: L. ZHANG PRODUCT SPEC: 8APR2016 APPLICATION SPEC:	TE Connectivity Harrisburg, PA 17105-3608
DIMENSIONS: mm TOLERANCES UNLESS OTHERWISE SPECIFIED: 0 PLC ± 1 PLC ± 2 PLC ± 3 PLC ± 4 PLC ± ANGLES FINISH ±	WEIGHT: - SCALE: 1:2 SHEET: 4 OF 4 REV: C	SIZE: A1 CAGE CODE: 00779 DRAWING NO: C-2836276 RESTRICTED TO:	Customer Accessible Production Drawing