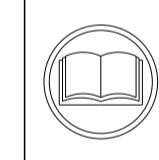


ATLANTIC VERSION TERMINATOR INTERFACE ADAPTER	PART NUMBER	REVISION	DESCRIPTION	FEED TYPE	APPLICATOR STYLE CONVERSION CHART					
					CONVERT TO	PART NUMBERS REQUIRED				
	2836220-2	A	FINE CRIMP HEIGHT ADJUST	PNEUMATIC	-	-	-	-	-	-
	2836220-5	A	FINE CRIMP HEIGHT ADJUST	SERVO LATCH PLATE	2119951-1	-	8-2836220-5	1901094-3	-	2168400-6 (QUANTITY 2)
	2836220-6	A	NON-CRIMP HEIGHT ADJUST	SERVO LATCH PLATE	2161326-1	-	8-2836220-4	-	-	-
	2836220-7	A	FINE CRIMP HEIGHT ADJUST	NONE	-	-	-	-	-	-
	7-2836220-7	A	CRIMP TOOLING KIT	-	-	-	-	-	-	-

APPLICATOR DATA		
CRIMP	SIZE	TYPE
WIRE	5.59 mm [.220]	F
INSUL	10.92 mm [.430]	O
APPLICATOR INSTRUCTIONS 408-10389		

TERMINAL DATA: TE TERMINAL		TE CRIMP SPECIFICATION	
TERMINAL NAME: MAXI-POWER-TIMER CONTACT SEAL WIRE SEAL			
WIRE STRIP LENGTH		INSULATION DIAMETER RANGE	
10.60-11.40 mm [.417-.449 IN]		Ø 4.60-5.20	
TERMINAL APPLICATION SPECIFICATION	114-18075		
TERMINALS APPLIED			
TE TERMINAL	TE TERMINAL	TE SEAL	TE SEAL
2293387-1		1355437-1	Ø 4.60-5.20
		1355437-2	Ø 5.80-6.60

WIRE SIZE	CRIMP HEIGHT mm [INCH]	CRIMP HEIGHT REFERENCE SETTING
10.00mm2	3.45+/-0.1 [.136+/- .004]	4.5
10.00mm2	3.45+/-0.1 [.136+/- .004]	4.5



- RECOMMENDED SPARE PARTS
- GREASE BEARING SURFACES LIGHTLY
- LUBRICATE DAILY PER THE APPLICATOR INSTRUCTION SHEET SUPPLIED WITH THE APPLICATOR.
- APPLICATOR SPECIFIC DATA TO BE ENTERED INTO BLANK MEMORY CHIP AT ASSEMBLY. SEE BELOW FOR PART NUMBER:
 PNEUMATIC FEED WITH "SMART APPLICATOR" CONVERSION: 8-2836220-4
 SERVO FEED WITH "FINE CRIMP HEIGHT ADJUST": 8-2836220-5
 SERVO FEED WITH "NON-CRIMP HEIGHT ADJUST": 8-2836220-6
- ADJUSTMENT OF THE STRIPPER MAY BE REQUIRED WHEN MOVING THE APPLICATOR BETWEEN BENCH AND LEADMAKER APPLICATIONS.
- APPLY PART NUMBER 1-23419-5 LOCTITE TO THREADS OF ITEMS 62. APPLY PART NUMBER 2-23419-6 LOCTITE TO THREADS OF ITEM 242. FOR -6 ONLY APPLY PART NUMBER 1-23419-5 LOCTITE TO THREADS OF ITEMS 37.
- GREASE THREADS, GROOVE AND O-RING ON ITEMS 35 & 252.
- MAGNET, ITEM 166 MUST BE ORIENTED CORRECTLY IN ORDER TO PROPERLY ACTUATE THE COUNTER.
- CRIMP HEIGHT REFERENCE SETTING WAS THE SETTING USED WHEN THE APPLICATOR WAS QUALIFIED AT THE FACTORY. ADJUSTMENT MAY BE NECESSARY WHEN RUNNING APPLICATOR IN THE FIELD.
- TERMINAL PITCH NOT COMPATIBLE WITH MECHANICAL FEED.
- WHEN ASSEMBLING A NON CRIMP HEIGHT ADJUST APPLICATOR (-6) USE SHIMS FROM ITEM 260 TO ACHIEVE A NOMINAL SHIM HEIGHT OF 2.35.
- THIS APPLICATOR APPLIES TERMINAL WITH A SEAL.
- APPLY TORQ-SEAL IN ALLEN SOCKET TO FILL HOLE AFTER FLAT HD HAS BEEN ADJUSTED TO CORRECT HEIGHT AT QUALIFICATION.
- CUT TO LENGTH AT ASSEMBLY.

***WARNING**
 ON INSTALLATION, SET WIRE DISC, ITEM 40 TO LARGEST WIRE SIZE SETTING. USE OF SETTINGS BELOW MINIMUM REQUIRED CRIMP HEIGHT SETTING WILL CAUSE DAMAGE TO CRIMP TOOLING.

- 2 2 2 2	2168083-1	SCR, SKT HD CAP, RoHS, M3 X 8.0	269
- 1 1 1 1	1633782-2	FENCE	267
- - 1 - -	2119957-2	APPLICATOR SHIM PACK	260
- 1 - 1 1	8-21084-0	O-RING, .676 ID, .070 DIA. MAT.	252
- - - - 1	2119640-1	PUSH ROD, AIR FEED	250
- - - - 1	2079988-1	BUSHING, LCH5-12, MISUMI	249
- - - - 1	2119641-1	FEED CAM, AIR FEED	248
- 1 - 1 1	2119798-1	DETENT PIN	247
- 1 - 1 1	1-22279-3	SPRING, COMPRESSION	246
- - 1 - -	2161314-1	RAM, STEPPED, ATLANTIC, SF, NON-ADJ	245
- 1 1 1 1	2119082-3	CAM, SNAIL, INSULATION ADJUSTMENT	244
- 1 1 1 1	2079764-1	WASHER, WAVE SPRING, CREST-TO-CREST	243
- 1 1 1 1	2119083-1	RETAINER, INSULATION DIAL	242
-77 -7 -6 -5 -2	PART NO	DESCRIPTION	ITEM NO

ATLANTIC VERSION
 Shown on sheets 1 of 4 & 2 of 4
 (Pacific version shown on sheets 3 of 4 & 4 of 4)

SET UP GAUGE	LOC	DIST	REVISIONS				
2119599-1	A	66	P LTR	DESCRIPTION	DATE	OWN	APVD
			A	RELEASED	07NOV2017	TB	GB

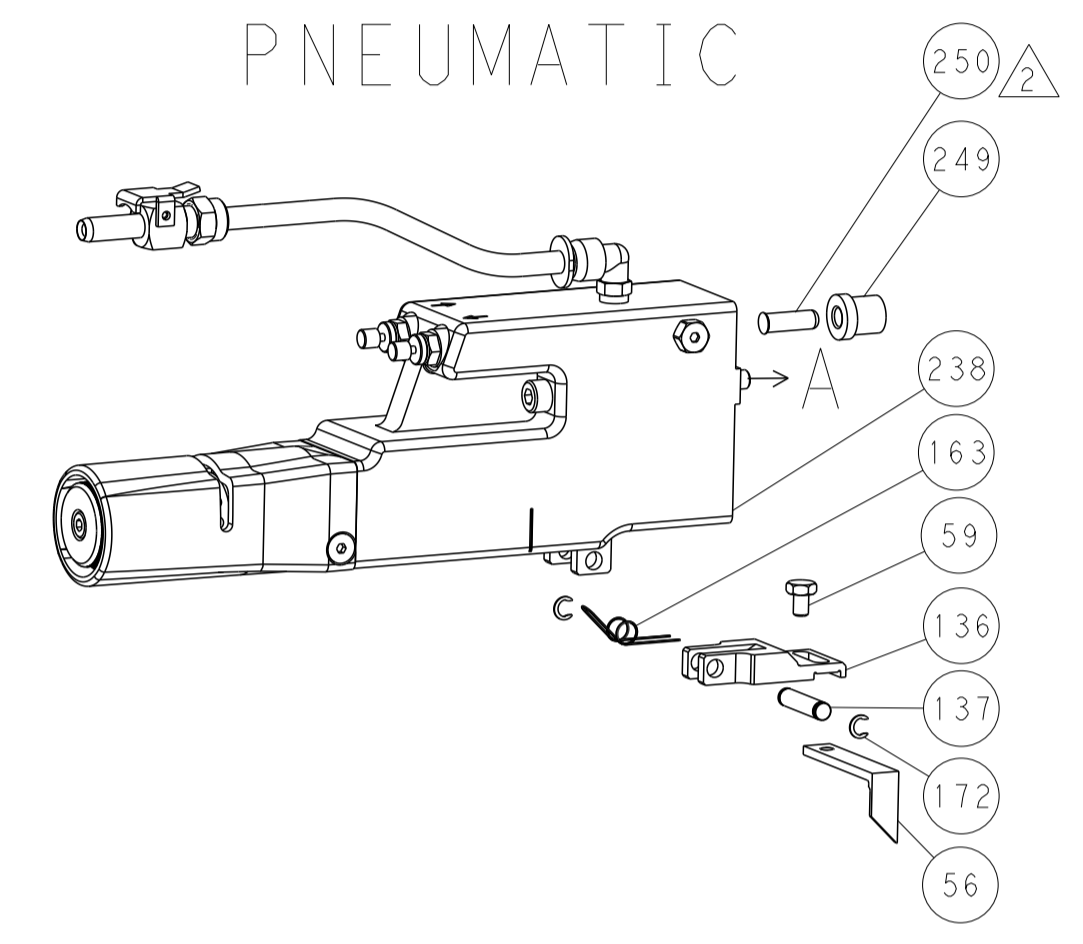
- - 2 2 -	2168400-6	SHCS, LOW HEAD, RoHS, M5 X 16	240
- - - 1	2063440-2	AIR FEED MODULE	238
- - 1 1 -	2119740-2	TAG, IDENTIFICATION	213
- - 1 1 -	1901094-3	SPACER, FEEDER	198
- - - - 2	21045-3	RING, RETAIN, EXTERN, 3/16 CRESCENT	172
- 1 1 1 1	994969-1	MAGNET, RARE EARTH HIGH ENERGY	166
- REF REF REF REF	994970-2	COUNTER, MAGNETIC	164
- - - - 1	240638-1	SPRING, FEED FINGER	163
- - - - 1	3-23627-7	PIN, RETAIN, GRVD, 3/16 X .854	137
- - - - 1	2119799-1	HOLDER, FEED FINGER, AF	136
- - REF REF -	SEE NOTE 4	MEMORY CHIP, PROGRAMMED	135
- - 1 1 -	1633743-1	SERVO FEED LATCH ASM	133
- 1 1 1 1	1-22281-8	SPRING, COMPRESSION	121
- 1 1 1 1	1-455888-4	SPACER, CRIMPER	120
- - REF REF -	2119944-1	FEED FINGER ASSEMBLY, SF	117
- 1 1 1 1	1-690438-0	FRONT STRIP GUIDE	96
- 2 2 2 2	2168083-1	SCR, SKT HD CAP, RoHS, M3 X 8.0	95
- 1 1 1 1	2168083-6	SCR, SKT HD CAP, RoHS, M5 X 65	93
- 1 1 1 1	455888-6	SPACER, CRIMPER	82
- 2 2 2 2	2079383-4	SCR, BHSC, RoHS (M4 X 8)	79
- 1 1 1 1	1803096-1	EXTENSION PLATE	78
- 1 1 1 1	2119956-1	DOCUMENTATION PACKAGE	71
- 1 1 1 1	1-2119791-1	DEPRESSOR, WIRE	70
- 1 1 1 1	2119943-1	WASHER, SPACER	69
- 1 - - 1	2119740-1	TAG, IDENTIFICATION	67
- 2 2 2 2	2168078-1	SCREW, DRIVE, RH, RoHS, 2 x .188	66
- 1 - 1 1	2119793-1	LIMITER, ADJUSTMENT BOLT	63
- 3 - 3 3	992763-5	SCR, SET, SOC, CONE PNT, M3 X 4.0	62
- 2 2 2 2	2-18032-5	SCR, SET, FLT PNT, M5 X 20.0	61
- 1 1 1 1	2079383-4	SCR, BHSC, RoHS (M4 X 8)	60
- - - - 1	5-18022-5	SCR, HEX HD CAP, M4 X 6.0	59
- 1 1 1 1	1-2168083-3	SCR, SKT HD CAP, RoHS, M3 X 16	57
- - - - 1	1-1338683-1	FEED PAWL	56
- 4 4 4 4	2168400-1	SHCS, LOW HEAD, RoHS, M4 X 12	54
- 2 2 2 2	2-2168083-5	SCR, SKT HD CAP, RoHS, M4 X 14	53
- 2 2 2 2	5018030-1	NUT, HEX, REG, RoHS, M3	52
- 1 1 1 1	811242-9	BUMPER, HOLD DOWN	51
- 1 1 1 1	690753-2	SPACER, TONKER	50
- - - - 1	18023-9	SCR, SKT HD CAP M4 X 6.0	49
- 1 1 1 1	2-2119656-6	APPLICATOR BASIC ASSEMBLY, SF	46
- 1 - 1 1	2161311-1	RAM, STEPPED, AMP STYLE, SIDE FEED	44
- 1 1 1 1	1-2079383-5	SCR, BHSC, RoHS (M8 X 40)	41
- 1 - 1 1	2119645-1	DISC, NUMBERED FA WIRE ADJUSTMENT	40
- 1 - 1 1	2119957-1	APPLICATOR SHIM PACK	39
- 1 1 1 1	2119644-4	RAM WASHER, PRECISION	38
- 1 1 1 1	2119085-1	FA HEAD, ATLANTIC STYLE	37
- 1 - 1 1	2119092-1	BOLT, ADJUSTMENT	35
- 1 1 1 1	6-1752356-0	SUPPORT, TERMINAL	34
- 2 2 2 2	1-2079383-3	SCR, BHSC, RoHS (M4 X 25)	33
- 1 1 1 1	2161328-1	HEX HEAD, FLANGED, M5 x 8mm LONG	32
- 1 1 1 1	2-1320908-3	SPACER, STRIP GUIDE	30
- 1 1 1 1	2-1901086-3	PLATE, STRIP GUIDE	29
- 1 1 1 1	2-455888-4	SPACER, CRIMPER	28
- 2 2 2 2	1-22284-0	SPRING, COMPRESSION	27
- 1 1 1 1	356835-1	LEVER, DRAG RELEASE	26
- 1 1 1 1	240792-1	DRAG, TERMINAL	25
- 1 1 1 1	1320928-6	STRIP GUIDE	24
- 1 1 1 1	980371-4	SCR, SKT HD SHLDR 5.0 DIA X 6.0	23
- 1 1 1 1	2168083-2	SCR, SKT HD CAP, RoHS, M4 X 8.0	21
- 2 2 2 2	1-18028-2	WASHER, FLAT, REG M4	20
- 1 1 1 1	1803013-1	STRIPPER, SIDE FEED	19
- 1 1 1 1	3-22280-3	SPRING, COMPRESSION	12
- 1 1 1 1	1-356885-3	STOP, SHEAR	11
- 1 1 1 1	2-2119805-0	SHEAR HOLDER, FRONT	10
- 1 1 1 1	1-318059-7	FLOATING SHEAR, FRONT	9
1 1 1 1 1 1	1803320-8	ANVIL, COMBINATION	8
- 1 1 1 1	4-240641-0	SPACER	7
- - - - -	-	-	6
- 1 1 1 1	1-1803080-8	DEPRESSOR, SHEAR	5
- 1 1 1 1	6-238011-4	BLOCK, CRIMPER SPACER	4
1 1 1 1 1 1	1803453-2	CRIMPER, INSULATION O	3
- 1 1 1 1	1-455888-3	SPACER, CRIMPER	2
1 1 1 1 1 1	9-1633730-3	CRIMPER, WIRE	1
-77 -7 -6 -5 -2	PART NO	DESCRIPTION	ITEM NO

DIMENSIONS:		TOLERANCES UNLESS OTHERWISE SPECIFIED:		DRAWING NO		RESTRICTED TO	
mm	0 PLC ±	1 PLC ±	2 PLC ±	3 PLC ±	4 PLC ±	5 PLC ±	6 PLC ±
	ANGLES ±	FINISH ±					
MATERIAL		WEIGHT		SIZE	CAGE CODE	DRAWING NO	RESTRICTED TO
				A1	00779	2836220	
Customer Accessible Production Drawing				SCALE	1:2	SHEET	1 OF 4

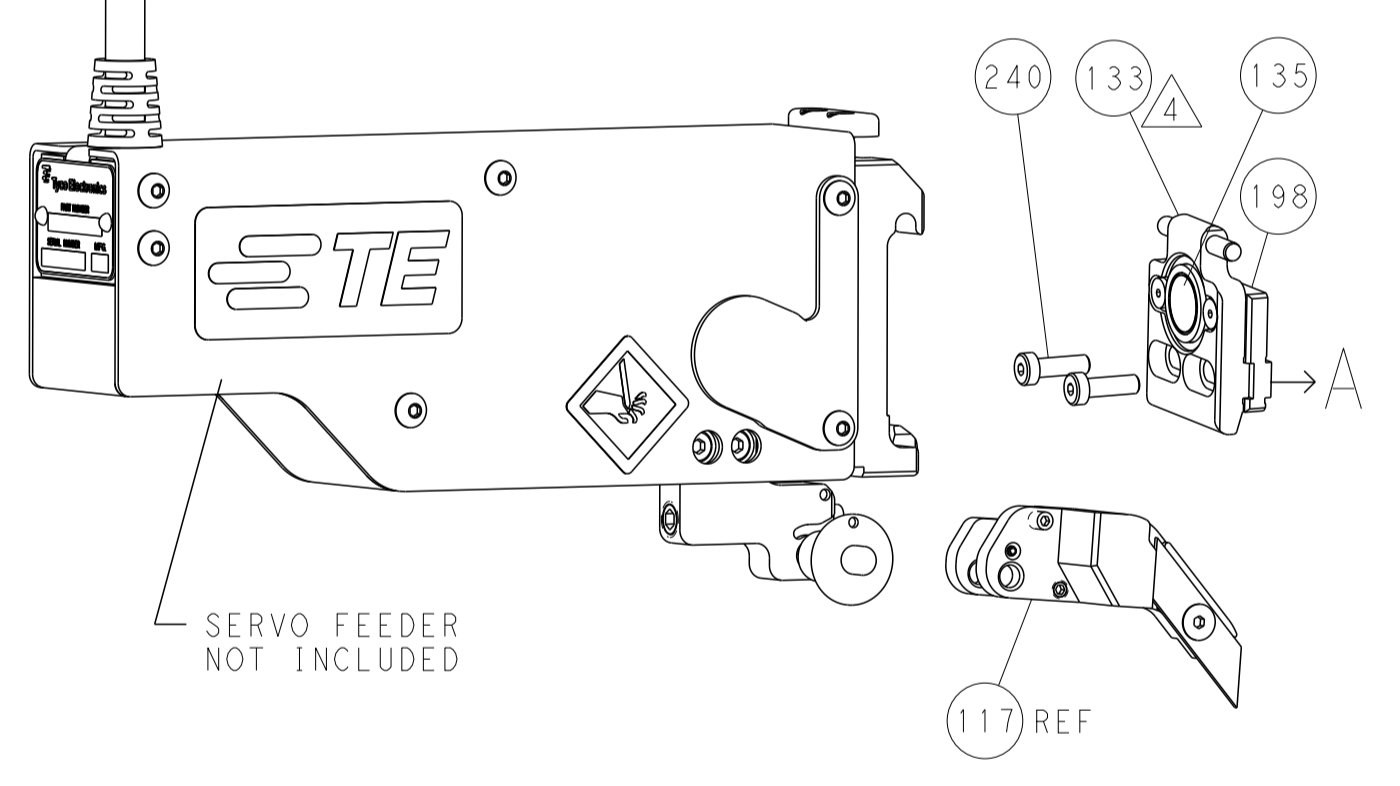
LOC	DIST	REVISIONS					
A	66	P	LTN	DESCRIPTION	DATE	DMN	APVD
		-		SEE SHEET 1			

FEED TYPE

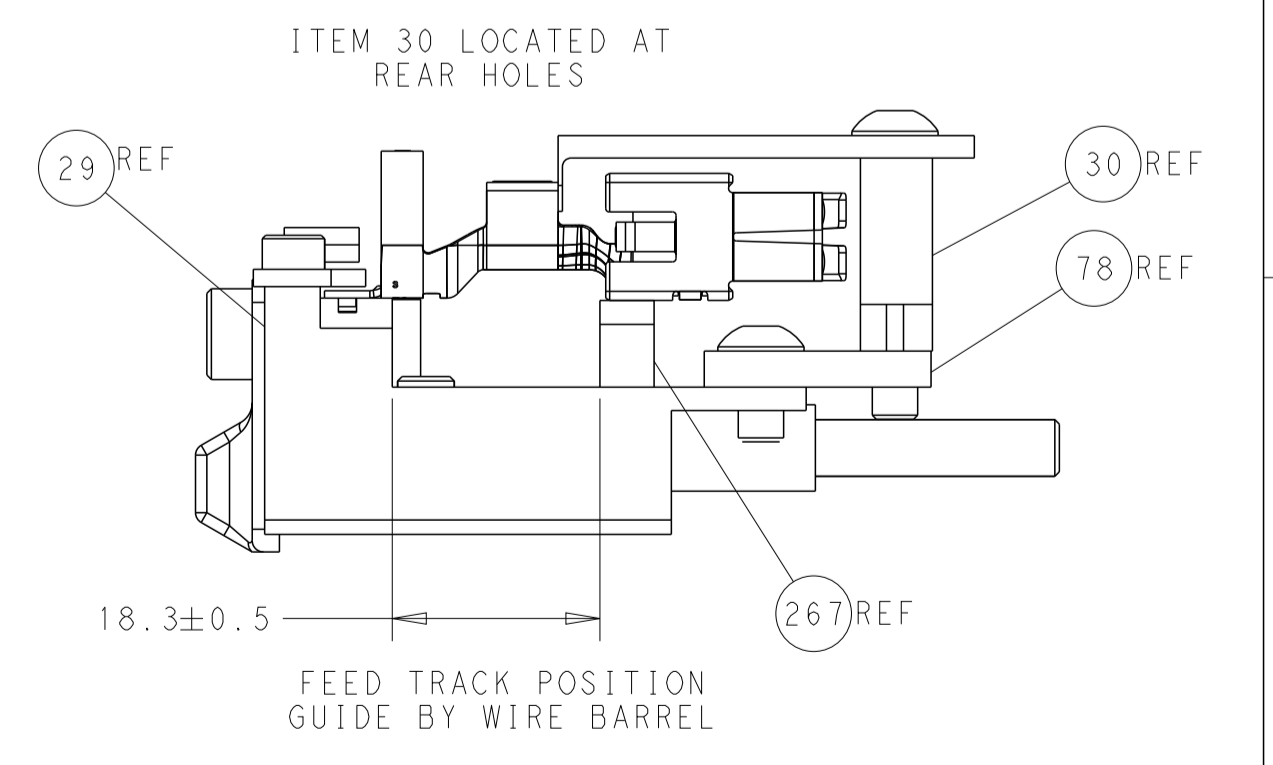
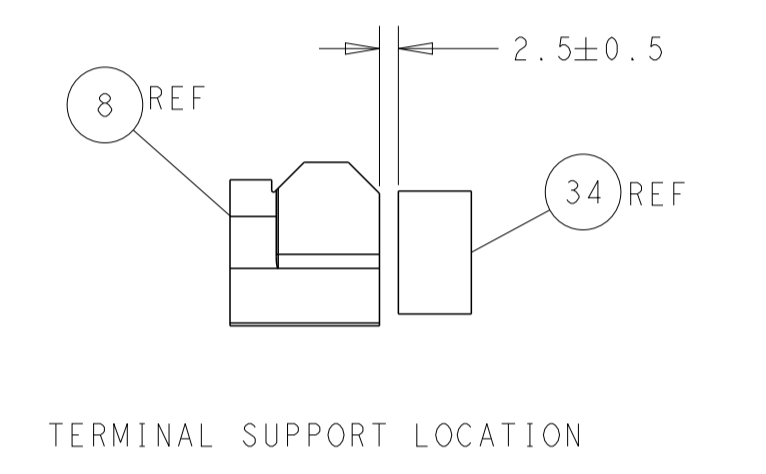
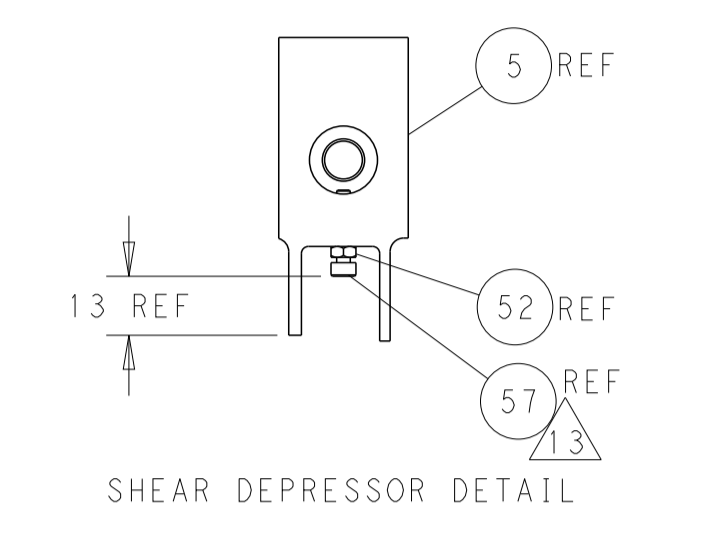
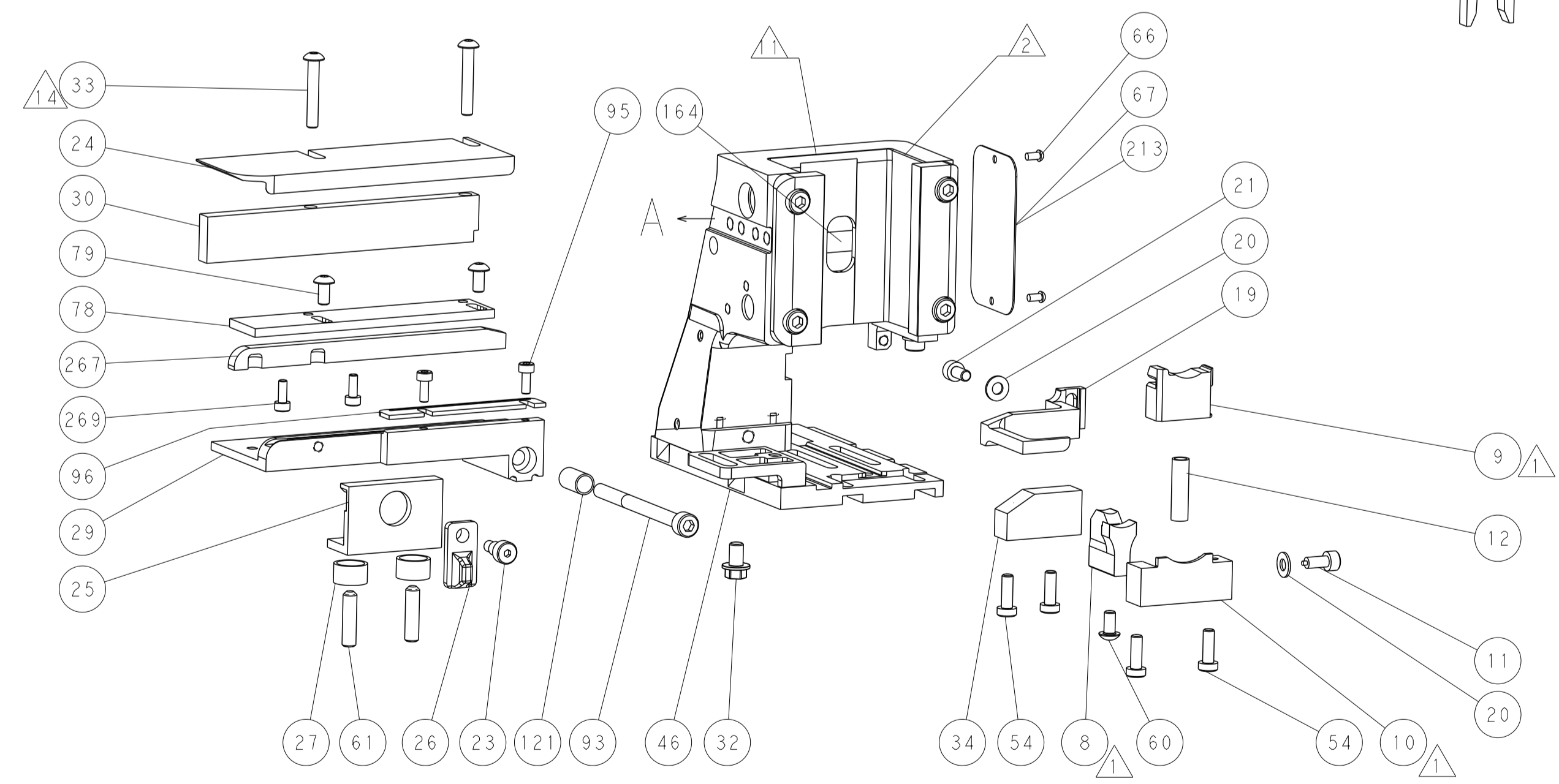
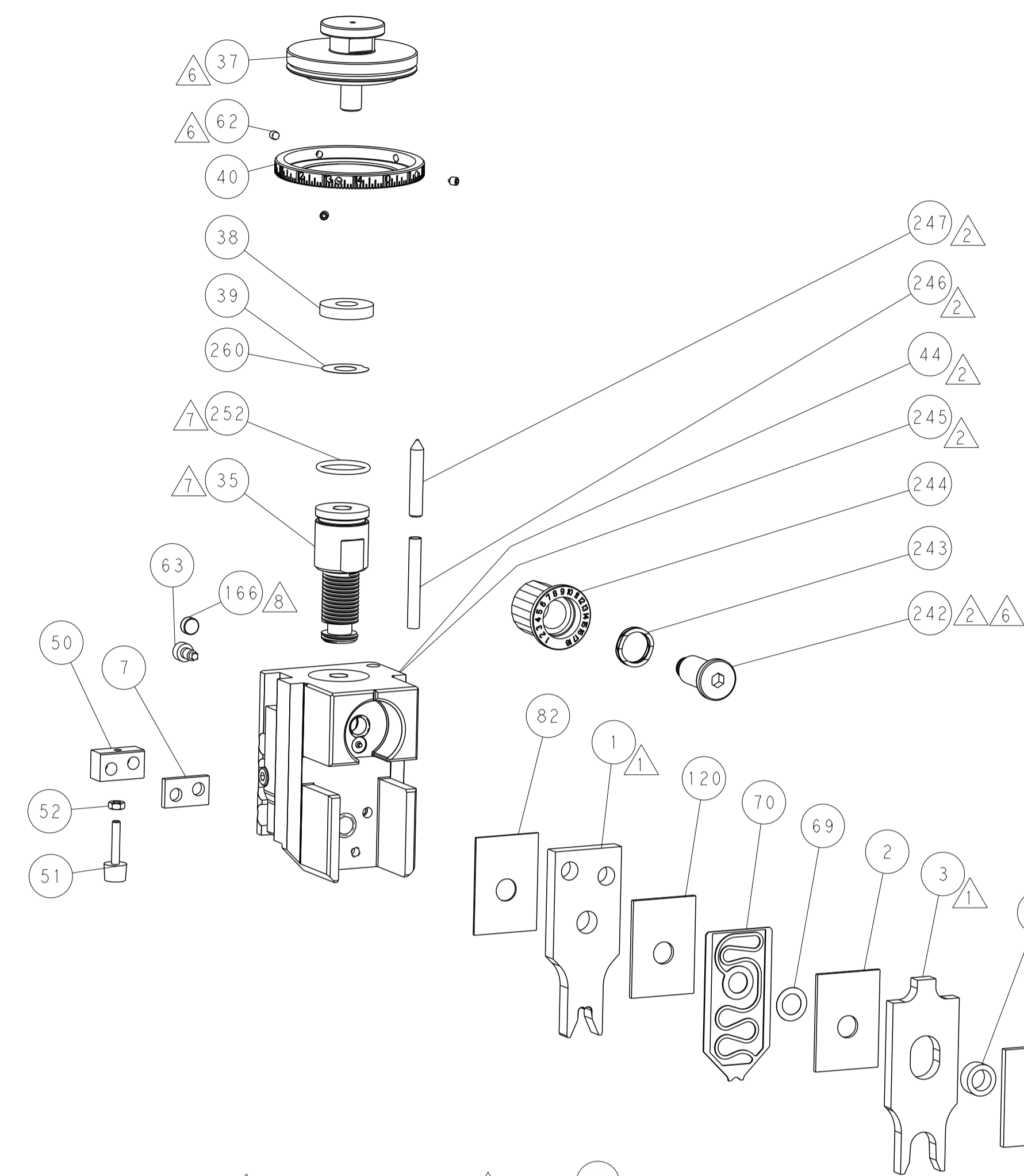
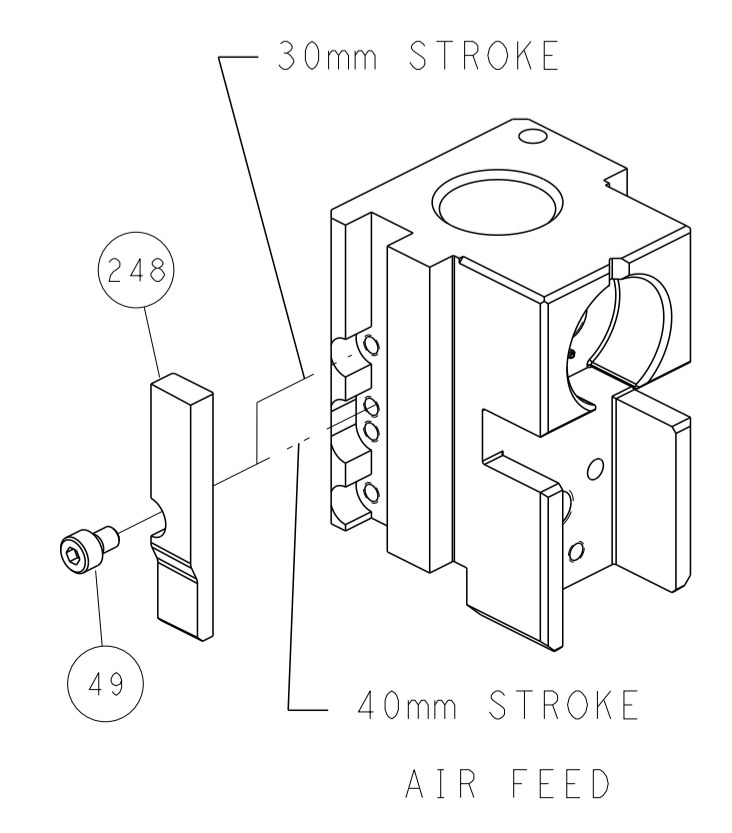
PNEUMATIC



SERVO LATCH PLATE



CAM POSITION



ATLANTIC VERSION
 Shown on sheets 1 of 4 & 2 of 4
 (Pacific version shown on sheets 3 of 4 & 4 of 4)

<small>THIS DRAWING IS UNPUBLISHED. RELEASED FOR PUBLICATION. IT IS THE PROPERTY OF TYCO ELECTRONICS CORPORATION. IT IS TO BE USED ONLY FOR THE PURPOSES AND IN THE QUANTITIES SPECIFIED IN THE ORDER. IT IS NOT TO BE REPRODUCED OR TRANSMITTED IN ANY FORM OR BY ANY MEANS, ELECTRONIC OR MECHANICAL, INCLUDING PHOTOCOPYING, RECORDING, OR BY ANY INFORMATION STORAGE AND RETRIEVAL SYSTEM, WITHOUT THE WRITTEN PERMISSION OF TYCO ELECTRONICS CORPORATION.</small>		DMN: M. RILEY 08MAR2016 CHK: G. BAILEY 08MAR2016 APVD: J. DEGRANGE 08MAR2016	NAME: Ocean Side Feed Applicator SIZE: A1 CAGE CODE: 00779 DRAWING NO: C-2836220	RESTRICTED TO: - SCALE: 1:2 SHEET: 2 OF 4 REV: A
DIMENSIONS: mm TOLERANCES UNLESS OTHERWISE SPECIFIED: 0 PLC ± 1 PLC ± 2 PLC ± 3 PLC ± 4 PLC ± ANGLES ± MATERIAL: - FINISH: -	TOLERANCES UNLESS OTHERWISE SPECIFIED: 0 PLC ± 1 PLC ± 2 PLC ± 3 PLC ± 4 PLC ± ANGLES ± MATERIAL: - FINISH: -	PRODUCT SPEC: APPLICATION SPEC: WEIGHT: - SCALE: 1:2 SHEET: 2 OF 4 REV: A	NAME: Ocean Side Feed Applicator SIZE: A1 CAGE CODE: 00779 DRAWING NO: C-2836220 RESTRICTED TO: -	RESTRICTED TO: - SCALE: 1:2 SHEET: 2 OF 4 REV: A

PACIFIC VERSION TERMINATOR INTERFACE ADAPTER	PART NUMBER	REVISION	DESCRIPTION	FEED TYPE
	2-2836220-2	A	FINE CRIMP HEIGHT ADJUST	PNEUMATIC
	2-2836220-5	A	FINE CRIMP HEIGHT ADJUST	SERVO LATCH PLATE ⁴
	2-2836220-7	A	FINE CRIMP HEIGHT ADJUST	NONE
	7-2836220-7	A	CRIMP TOOLING KIT	-

APPLICATOR DATA		
CRIMP	SIZE	TYPE
WIRE	5.59 mm [.220]	F
INSUL	10.92 mm [.430]	O
APPLICATOR INSTRUCTIONS 408-10389		

TERMINAL DATA: TE TERMINAL		TE CRIMP SPECIFICATION	
TERMINAL NAME: MAXI-POWER-TIMER CONTACT SEAL WIRE SEAL			
WIRE STRIP LENGTH		INSULATION DIAMETER RANGE	
10.60-11.40 mm [.417-.449 IN]		∅	¹
TERMINAL APPLICATION SPECIFICATION	114-18075	-	-
TERMINALS APPLIED ¹⁰			
TE TERMINAL	TE TERMINAL	TE SEAL	TE SEAL
2293387-1			1355437-1
			1355437-2
			CABLE DIAMETER
			∅4.60-5.20
			∅5.80-6.60

WIRE SIZE	CRIMP HEIGHT mm [INCH]	CRIMP HEIGHT REFERENCE SETTING
10.00mm ²	3.45+/-0.1 [.136+/- .004]	4.5
10.00mm ²	3.45+/-0.1 [.136+/- .004]	4.5

- ¹ RECOMMENDED SPARE PARTS
- ² GREASE BEARING SURFACES LIGHTLY
- 3. LUBRICATE DAILY PER THE APPLICATOR INSTRUCTION SHEET SUPPLIED WITH THE APPLICATOR.
- ⁴ APPLICATOR SPECIFIC DATA TO BE ENTERED INTO BLANK MEMORY CHIP AT ASSEMBLY. SEE BELOW FOR PART NUMBER:
PNEUMATIC FEED WITH "SMART APPLICATOR" CONVERSION: 8-2836220-4
SERVO FEED WITH "FINE CRIMP HEIGHT ADJUST": 8-2836220-5
- 5. ADJUSTMENT OF THE STRIPPER MAY BE REQUIRED WHEN MOVING THE APPLICATOR BETWEEN BENCH AND LEADMAKER APPLICATIONS.
- ⁶ APPLY PART NUMBER 1-23419-5 LOCTITE TO THREADS OF ITEMS 62.
APPLY PART NUMBER 2-23419-6 LOCTITE TO THREADS OF ITEM 242.
- ⁷ GREASE THREADS, GROOVE AND O-RING ON ITEMS 139 & 152.
- ⁸ MAGNET MUST BE ORIENTED CORRECTLY IN ORDER TO PROPERLY ACTUATE THE COUNTER.
- ⁹ CRIMP HEIGHT REFERENCE SETTING WAS THE SETTING USED WHEN THE APPLICATOR WAS QUALIFIED AT THE FACTORY. ADJUSTMENT MAY BE NECESSARY WHEN RUNNING APPLICATOR IN THE FIELD.
- ¹⁰ TERMINAL PITCH NOT COMPATIBLE WITH MECHANICAL FEED.
- ¹¹ THIS APPLICATOR APPLIES TERMINAL WITH A SEAL.
- ¹² APPLY TORQ-SEAL IN ALLEN SOCKET TO FILL HOLE AFTER FLAT HD HAS BEEN ADJUSTED TO CORRECT HEIGHT AT QUALIFICATION.
- ¹³ CUT TO LENGTH AT ASSEMBLY.

APPLICATOR STYLE CONVERSION CHART									
CONVERT TO	PART NUMBERS REQUIRED								
-	-	-	-	-	-	-	-	-	-
SERVO LATCH PLATE	2119951-1	-	8-2836220-5	1901094-3	-	-	-	-	2168400-6 (QUANTITY 2)
SMART APPLICATOR	2161326-1	-	8-2836220-4	-	-	-	-	-	-
PNEUMATIC FEED	2119950-1	1-1338683-1	5-18022-5	2119641-2	2119799-1	-	-	-	2063440-2

***WARNING**
ON INSTALLATION, SET WIRE DISC, ITEM 40 TO LARGEST WIRE SIZE SETTING. USE OF SETTINGS BELOW MINIMUM REQUIRED CRIMP HEIGHT SETTING WILL CAUSE DAMAGE TO CRIMP TOOLING.

-	2	2	2	2168083-1	SCR, SKT HD CAP, RoHS, M3 X 8.0	269
-	1	1	1	1633782-2	FENCE	267
-	1	1	1	2119782-1	FINE ADJUST HEAD ASM, PACIFIC STYLE	251
-	-	-	1	2119640-1	PUSH ROD, AIR FEED	250
-	-	-	1	2079988-1	BUSHING, LCH5-12, MISUMI	249
-	1	1	1	1-22279-3	SPRING, COMPRESSION	246
-	1	1	1	2119082-3	CAM, SNAIL, INSULATION ADJUSTMENT	244
-	1	1	1	2079764-1	WASHER, WAVE SPRING, CREST-TO-CREST	243
-	1	1	1	2119083-1	RETAINER, INSULATION DIAL	242
-	-	2	-	2168400-6	SHCS, LOW HEAD, RoHS, M5 X 16	240
-	-	-	1	2063440-2	AIR FEED MODULE	238
-77	-27	-25	-22	PART NO	DESCRIPTION	ITEM NO

PACIFIC VERSION
Shown on sheets 3 of 4 & 4 of 4
(Atlantic version shown on sheets 1 of 4 & 2 of 4)

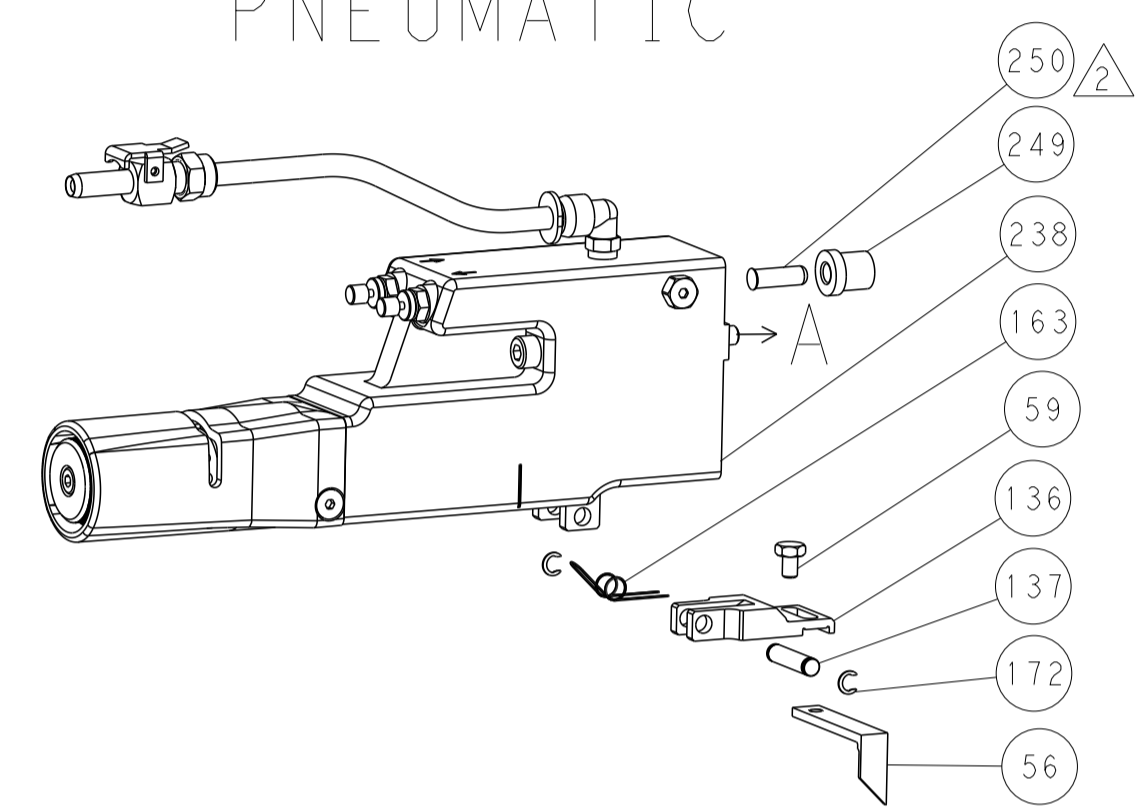
SET UP GAUGE	LOC	DIST	REVISIONS					
2119599-1	A	66	P	LTN	DESCRIPTION	DATE	OWN	APVD
			-	-	SEE SHEET 1	-	-	-

-	-	1	-	2119740-2	TAG, IDENTIFICATION	213	
-	-	1	-	1901094-3	SPACER, FEEDER	198	
-	-	-	2	21045-3	RING, RETAIN, EXTERN, 3/16 CRESCENT	172	
⁸	-	1	1	994969-1	MAGNET, RARE EARTH HIGH ENERGY	166	
-	REF	REF	REF	994970-2	COUNTER, MAGNETIC	164	
-	-	-	1	240638-1	SPRING, FEED FINGER	163	
⁷	-	1	1	8-21084-1	O-RING, .801 ID, .070 DIA. MAT.	152	
-	-	-	1	2119641-2	FEED CAM, AIR FEED	151	
-	1	1	1	2119798-2	DETENT PIN	145	
-	1	1	1	2079383-8	SCR, BHSC, RoHS (M4 X 16)	144	
-	4	4	4	2168400-5	SHCS, LOW HEAD, RoHS, M4 X 20	143	
-	1	1	1	2-2119656-7	APPLICATOR BASIC ASSEMBLY, SF	141	
-	1	1	1	2161312-1	RAM, STEPPED, ASIAN STYLE, SIDE FEED	140	
⁷	-	1	1	2119092-2	BOLT, ADJUSTMENT	139	
-	-	-	1	3-23627-7	PIN, RETAIN, GRVD, 3/16 X .854	137	
-	-	-	1	2119799-1	HOLDER, FEED FINGER, AF	136	
-	-	REF	-	SEE NOTE 4	MEMORY CHIP, PROGRAMMED	135	
-	-	1	-	1633743-1	SERVO FEED LATCH ASM	133	
-	1	1	1	1-22281-8	SPRING, COMPRESSION	121	
-	1	1	1	1-455888-4	SPACER, CRIMPER	120	
-	-	REF	-	2119944-1	FEED FINGER ASSEMBLY, SF	117	
-	1	1	1	1-690438-0	FRONT STRIP GUIDE	96	
-	2	2	2	2168083-1	SCR, SKT HD CAP, RoHS, M3 X 8.0	95	
-	1	1	1	2168083-6	SCR, SKT HD CAP, RoHS, M5 X 65	93	
-	1	1	1	455888-6	SPACER, CRIMPER	82	
-	2	2	2	2079383-4	SCR, BHSC, RoHS (M4 X 8)	79	
-	1	1	1	1803096-1	EXTENSION PLATE	78	
-	1	1	1	2119956-1	DOCUMENTATION PACKAGE	71	
-	1	1	1	1-2119791-1	DEPRESSOR, WIRE	70	
-	1	1	1	2119943-1	WASHER, SPACER	69	
-	1	-	1	2119740-1	TAG, IDENTIFICATION	67	
-	2	2	2	2168078-1	SCREW, DRIVE, RH, RoHS, 2 x .188	66	
-	1	1	1	2119793-1	LIMITER, ADJUSTMENT BOLT	63	
⁶	-	3	3	992763-5	SCR, SET, SOC, CONE PNT, M3 X 4.0	62	
-	2	2	2	2-18032-5	SCR, SET, FLT PNT, M5 X 20.0	61	
-	-	-	1	5-18022-5	SCR, HEX HD CAP, M4 X 6.0	59	
¹²	-	1	1	1-2168083-3	SCR, SKT HD CAP, RoHS, M3 X 16	57	
-	-	-	1	1-1338683-1	FEED PAWL	56	
-	2	2	2	2-2168083-5	SCR, SKT HD CAP, RoHS, M4 X 14	53	
-	2	2	2	5018030-1	NUT, HEX, REG, RoHS, M3	52	
-	1	1	1	811242-9	BUMPER, HOLD DOWN	51	
-	1	1	1	690753-2	SPACER, TONKER	50	
-	-	-	1	18023-9	SCR, SKT HD CAP M4 X 6.0	49	
-	1	1	1	1-2079383-5	SCR, BHSC, RoHS (M8 X 40)	41	
-	1	1	1	2119645-1	DISC, NUMBERED FA WIRE ADJUSTMENT	40	
-	1	1	1	2119957-1	APPLICATOR SHIM PACK	39	
-	1	1	1	2119644-4	RAM WASHER, PRECISION	38	
-	1	1	1	6-1752356-0	SUPPORT, TERMINAL	34	
¹³	-	2	2	2	1-2079383-3	SCR, BHSC, RoHS (M4 X 25)	33
-	1	1	1	2161328-1	HEX HEAD, FLANGED, M5 X 8mm LONG	32	
-	1	1	1	2-1320908-3	SPACER, STRIP GUIDE	30	
-	1	1	1	2-1901086-3	PLATE, STRIP GUIDE	29	
-	1	1	1	2-455888-4	SPACER, CRIMPER	28	
-	2	2	2	1-22284-0	SPRING, COMPRESSION	27	
-	1	1	1	356835-1	LEVER, DRAG RELEASE	26	
-	1	1	1	240792-1	DRAG, TERMINAL	25	
-	1	1	1	1320928-6	STRIP GUIDE	24	
-	1	1	1	980371-4	SCR, SKT HD SHLDR 5.0 DIA X 6.0	23	
-	1	1	1	2168083-2	SCR, SKT HD CAP, RoHS, M4 X 8.0	21	
-	2	2	2	1-18028-2	WASHER, FLAT, REG M4	20	
-	1	1	1	1803013-1	STRIPPER, SIDE FEED	19	
-	1	1	1	3-22280-3	SPRING, COMPRESSION	12	
-	1	1	1	1-356885-3	STOP, SHEAR	11	
¹	-	1	1	1	2-2119805-0	SHEAR HOLDER, FRONT	10
¹	-	1	1	1	1-318059-7	FLOATING SHEAR, FRONT	9
¹	1	1	1	1	1803320-8	ANVIL, COMBINATION	8
-	1	1	1	4-240641-0	SPACER	7	
-	-	-	-	-	-	6	
-	1	1	1	1-1803080-8	DEPRESSOR, SHEAR	5	
-	1	1	1	6-238011-4	BLOCK, CRIMPER SPACER	4	
¹	1	1	1	1	1803453-2	CRIMPER, INSULATION O	3
-	1	1	1	1-455888-3	SPACER, CRIMPER	2	
¹	1	1	1	1	9-1633730-3	CRIMPER, WIRE	1
-77	-27	-25	-22	PART NO	DESCRIPTION	ITEM NO	

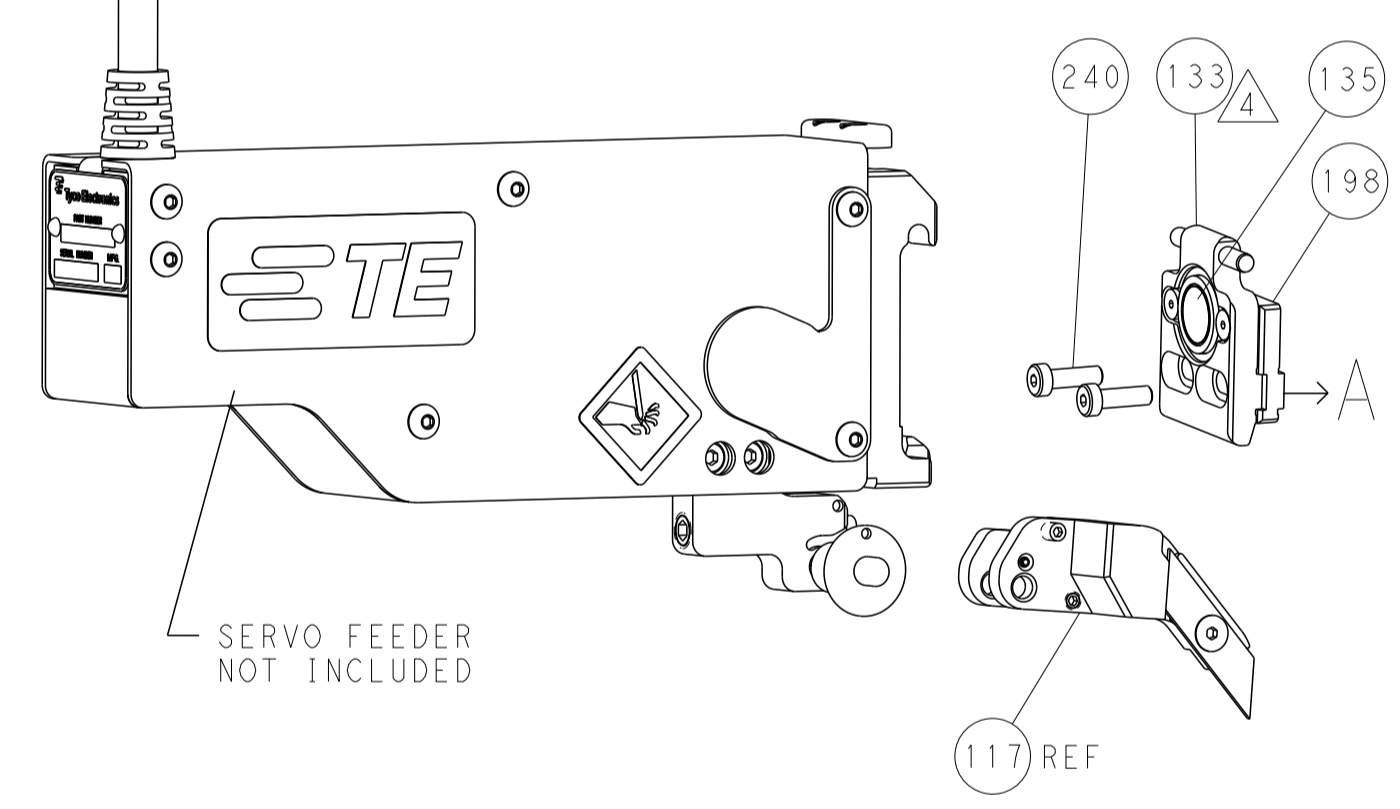
DIMENSIONS:		TOLERANCES UNLESS OTHERWISE SPECIFIED:		MATERIAL:		FINISH:		WEIGHT:		SCALE:	
mm	0 PLC	±									
	1 PLC	±									
	2 PLC	±									
	3 PLC	±									
	4 PLC	±									
	ANGLES	±									
	FINISH	±									

LOC	DIST	REV	DATE	BY	APPV
A	66				
		REVISIONS			
		DESCRIPTION	DATE	BY	APPV
		SEE SHEET 1			

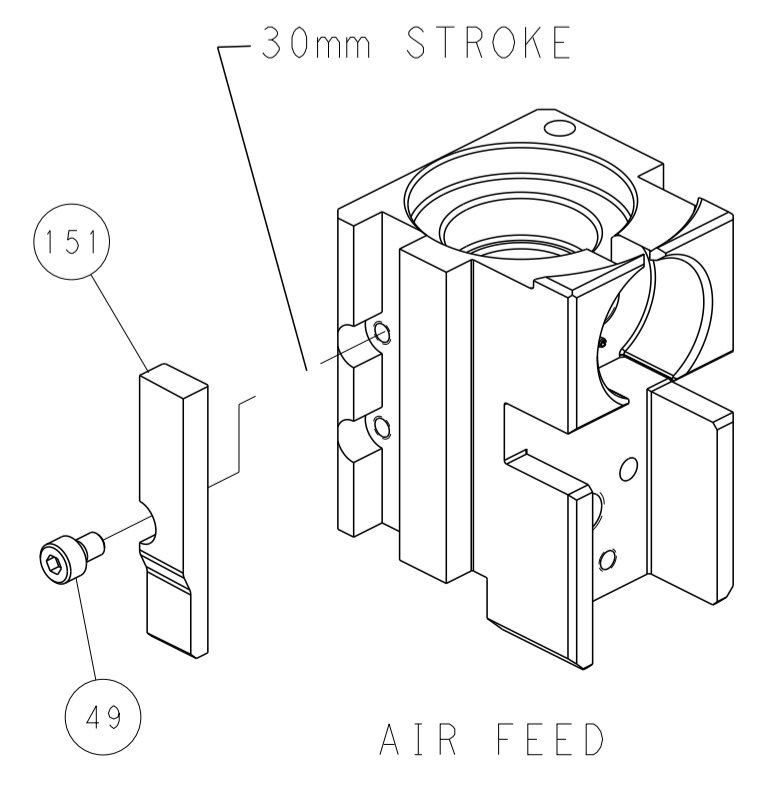
FEED TYPE PNEUMATIC



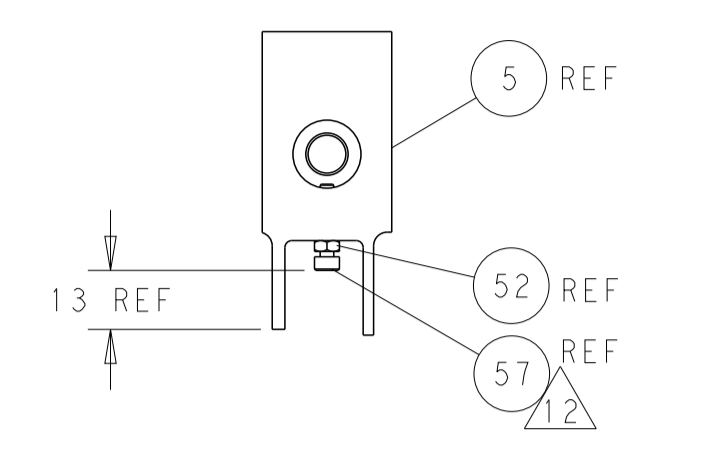
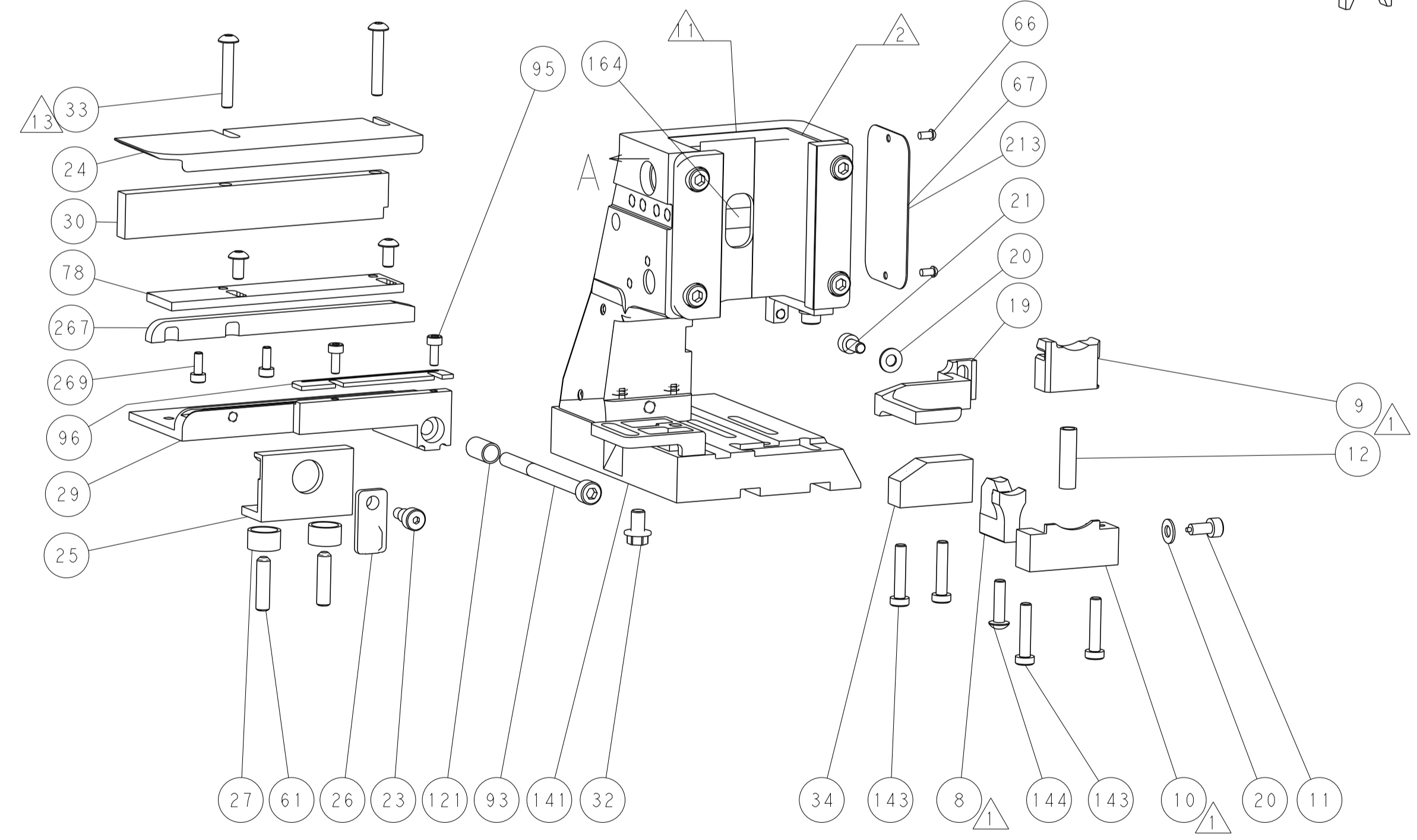
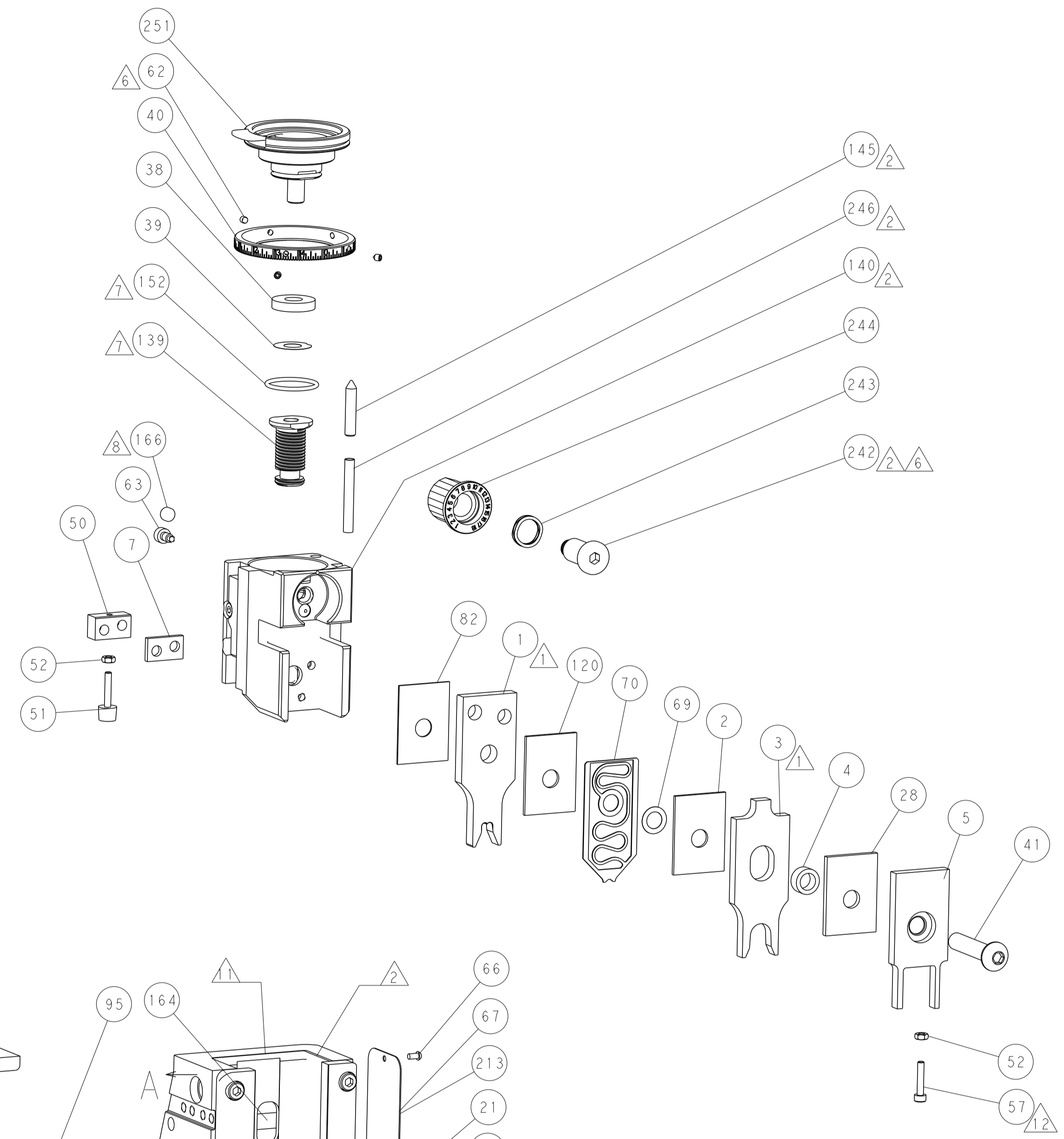
SERVO LATCH PLATE



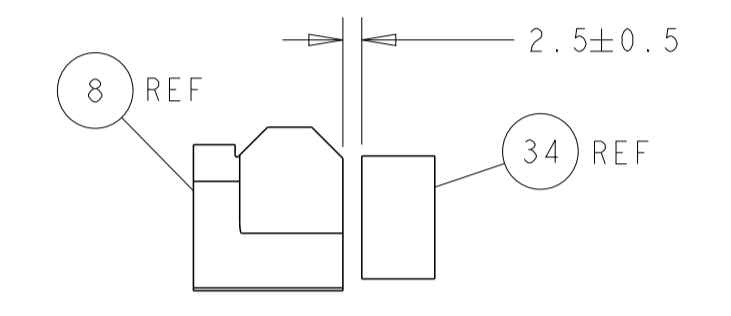
CAM POSITION



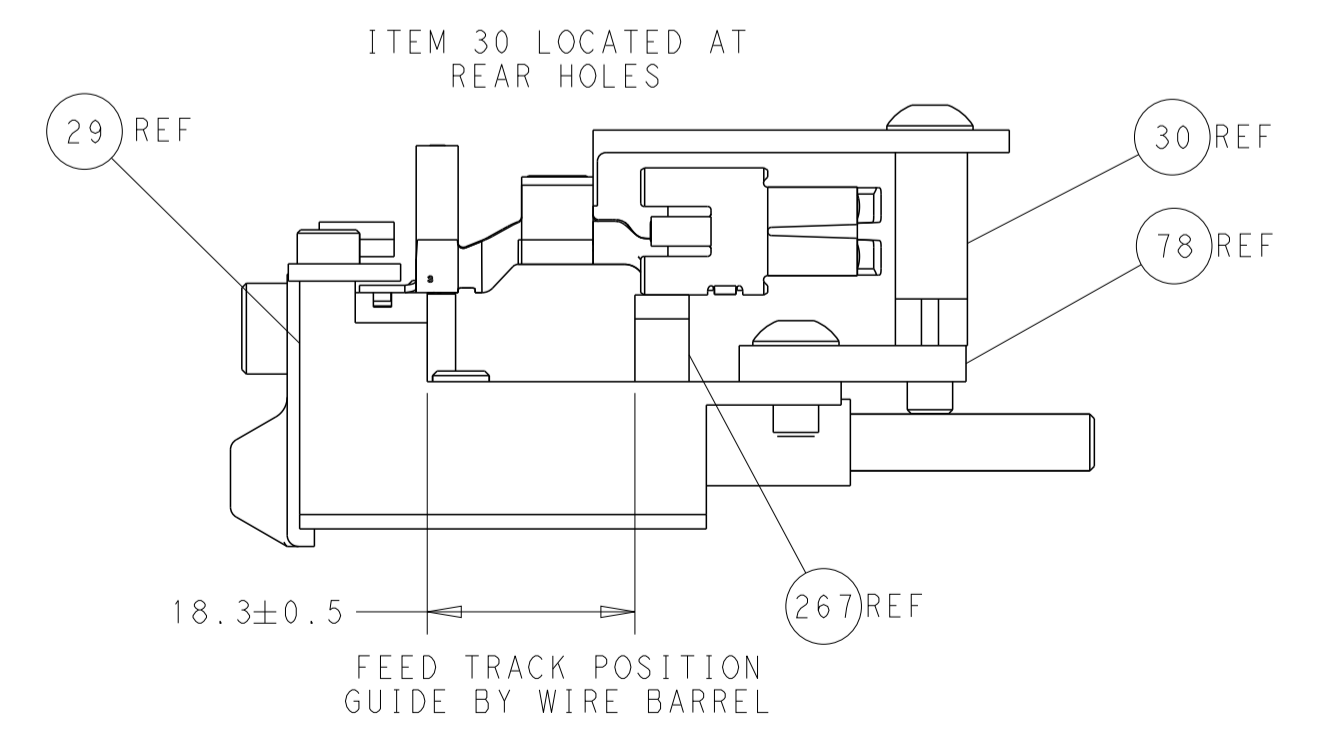
AIR FEED



SHEAR DEPRESSOR DETAIL



TERMINAL SUPPORT LOCATION



FEED TRACK POSITION
GUIDE BY WIRE BARREL

PACIFIC VERSION
 Shown on sheets 3 of 4 & 4 of 4
 (Atlantic version shown on sheets 1 of 4 & 2 of 4)

DIMENSIONS:		TOLERANCES UNLESS OTHERWISE SPECIFIED:		DWG: M. RILEY 08MAR2016		TE Connectivity	
mm	0 PLC ±	1 PLC ±	2 PLC ±	3 PLC ±	4 PLC ±	08MAR2016	Harrisburg, PA 17105-3608
	ANGLES ±	FINISH ±					
MATERIAL:				APVD: J. DEGRANGE 08MAR2016	NAME: Ocean Side Feed Applicator	SIZE: A1	CAGE CODE: 00779
				PRODUCT SPEC:		DRAWING NO: 2836220	RESTRICTED TO:
				APPLICATION SPEC:		SCALE: 1:2	SHEET 4 OF 4 REV A
				WEIGHT:		Customer Accessible Production Drawing	