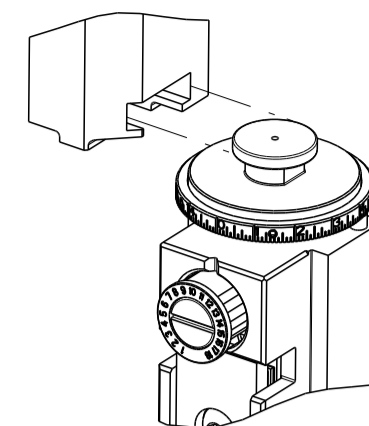


PART NUMBER	REVISION	DESCRIPTION	FEED TYPE
2836084-2	H	FINE CRIMP HEIGHT ADJUST	PNEUMATIC
7-2836084-2	H	PNEUMATIC AND CRIMP TOOLING KIT	PNEUMATIC
7-2836084-7	C	CRIMP TOOLING KIT	-

ATLANTIC VERSION TERMINATOR INTERFACE ADAPTER



APPLICATOR DATA		
CRIMP	SIZE	TYPE
WIRE	2.30 mm [.091]	F
INSUL	3.10 mm [.122]	F

APPLICATOR INSTRUCTIONS
408-35042

TERMINAL DATA: MOLEX TERMINAL MOLEX CRIMP SPECIFICATION

TERMINAL NAME: .093 DIA. PIN AND SOCKET	
WIRE STRIP LENGTH 3.96-5.54 mm [.156-.218 IN]	INSULATION DIAMETER RANGE Ø1.65-2.79 mm [.065-.110 IN]
TERMINAL APPLICATION SPECIFICATION ATS-638927100 Rev B	

TE TERMINAL	MOLEX TERMINAL	TE TERMINAL	MOLEX TERMINAL
1572331-1	02-09-2101	1572332-5	02-09-5169
1572331-2	02-09-6100	1572332-6	02-09-4104
1572331-3	02-09-6101	1572332-7	02-09-8108
1572332-1	02-09-1102	1572332-8	39-00-0281
1572332-2	02-09-5100	1572332-9	39-00-0282
1572332-3	02-09-5102	1-1572332-0	39-00-0293
1572332-4	02-09-1205	1-1572332-1	39-00-0296

WIRE SIZE	CRIMP HEIGHT mm [INCH]	CRIMP HEIGHT REFERENCE SETTING
14 AWG OR 2.00mm ²	1.50+/-0.05 [.059+/-0.002]	7.5
16 AWG OR 1.30mm ²	1.40+/-0.05 [.055+/-0.002]	8.3
18 AWG OR 0.80mm ²	1.31+/-0.04 [.052+/-0.002]	9.3
20 AWG OR 0.50mm ²	1.27+/-0.05 [.050+/-0.002]	9.3



- 1. RECOMMENDED SPARE PARTS
- 2. REFER TO SUPPLIED INSTRUCTION SHEET FOR CLEANING, LUBRICATION AND STORAGE OF APPLICATOR.
- 3. APPLY PART NUMBER 2-23419-6 LOCTITE TO THREADS OF ITEM 242.
- 4. CRIMP HEIGHT REFERENCE SETTING WAS THE SETTING USED WHEN THE APPLICATOR WAS QUALIFIED AT THE FACTORY. ADJUSTMENT MAY BE NECESSARY WHEN RUNNING APPLICATOR IN THE FIELD.
- 5. TERMINAL PITCH NOT COMPATIBLE WITH MECHANICAL FEED.
- 6. TERMINAL LUBRICANT IS RECOMMENDED.
- 7. CUT AT ASSEMBLY.
- 8. UNLESS SPECIFIED OTHERWISE TORQUE VALUES SHALL BE USED PER DOCUMENT, 101-35000.

***WARNING**
ON INSTALLATION, SET WIRE DISC TO CRIMP HEIGHT REFERENCE SETTING FOR LARGEST WIRE SIZE. CRIMP HEIGHT REFERENCE SETTINGS GREATER THAN THE VALUE SHOWN MAY CAUSE DAMAGE TO THE CRIMP TOOLING. REFER TO THE INSTRUCTION SHEET FOR PROPER SETUP AND ADJUSTMENTS.

LOC	DIST	REVISIONS					
A	66	P	LTN	DESCRIPTION	DATE	OWN	APPD
		E		ECR-21-004551	17APR2021	TB	RK
		F		ECR-21-005385	12MAY2021	JWC	GB
		G		ECR-23-187852	21SEP2023	ROY	GEB
		H		ECR-23-194728	11DEC2023	FZ	JAH

-	1	1	2-1633782-8	FENCE	301
-	1	1	455888-3	SPACER, CRIMPER -	279
-	1	1	23238-1	INSERT, COUPLING	278
-	1	1	2030758-3	TUBING, POLYURETHANE	277
-	1	1	5018030-2	NUT, HEX, REG, RoHS, M4	276
-	1	1	986220-3	CLAMP, CABLE, BLACK	275
-	1	1	2217068-1	BRACKET, AIR BLAST	273
1	1	1	2844234-1	PLATE, REAR SHEAR	272
-	4	4	2168083-1	SCR, SKT HD CAP, RoHS, M3 X 8.0	269
-	1	1	1-1633782-4	FENCE	267
-	1	1	2119641-1	FEED CAM, AIR FEED	248
-	1	1	2119082-7	CAM, SNAIL, INSULATION ADJUSTMENT	244
-	1	1	2079764-1	WASHER, WAVE SPRING, CREST-TO-CREST	243
3	1	1	2119083-1	RETAINER, INSULATION DIAL	242
-	1	1	2844940-1	AIR FEED MODULE	238
-	REF	REF	994970-2	COUNTER, MAGNETIC	164
-	2	2	2168083-3	SCR, SKT HD CAP, RoHS, M4 X 12.0	143
-	1	1	1-22281-8	SPRING, COMPRESSION	121
6	1	1	2119955-1	ASSY, LUBRICATOR, SIDE FEED	113
-	1	1	2844908-1	SCREW, LOCKING	99
-	1	1	2844907-1	POST, LOCKING	98
-	1	1	3-690712-7	FRONT STRIP GUIDE	96
-	2	2	1-2168083-3	SCR, SKT HD CAP, RoHS, M3 X 16	95
-	1	1	2168083-6	SCR, SKT HD CAP, RoHS, M5 X 65	93
-	1	1	1-455888-4	SPACER, CRIMPER -	82
-	1	1	1803607-3	DOCUMENTATION PACKAGE	71
-	1	1	2119740-1	TAG, IDENTIFICATION	67
-	2	2	2168078-1	SCREW, DRIVE, RH, RoHS, 2 x .188	66
-	2	2	2-18032-5	SCR, SET, FLT PNT, M5 X 20.0	61
-	1	1	2168083-2	SCR, SKT HD CAP, RoHS, M4 X 8.0	60
-	1	1	5-18022-5	SCR, HEX HD CAP, M4 X 6.0	59
-	1	1	1338685-1	PAWL, FEED	56
-	2	2	2168083-8	SCR, SKT HD CAP, RoHS, M4 X 16	53
-	1	1	5018030-1	NUT, HEX, REG, RoHS, M3	52
-	1	1	811242-5	BUMPER, HOLD DOWN	51
-	1	1	690753-2	SPACER, TONKER	50
-	1	1	18023-9	SCR, SKT HD CAP M4 X 6.0	49
-	1	1	1803583-9	APPLICATOR BASIC ASSEMBLY, SF	46
-	1	1	1803515-1	RAM ASSEMBLY, SF ATLANTIC	44
-	1	1	1803602-1	SCR, BHSC, RoHS (M8 X 25)	41
7	2	2	2079383-5	SCR, BHSC, RoHS (M4 X 20)	33
-	2	2	2844962-3	SPACER, CYLINDRICAL, STRIP GUIDE	30
-	1	1	4-2844938-6	PLATE, STRIP GUIDE -	29
-	2	2	22281-8	SPRING, COMPRESSION	27
-	1	1	356835-1	LEVER, DRAG RELEASE	26
-	1	1	2-690754-1	DRAG, SPECIAL	25
-	1	1	1320860-2	STRIP GUIDE, REAR	24
-	1	1	980371-4	SCR, SKT HD SHLDR 5.0 DIA X 6.0	23
-	1	1	2168083-2	SCR, SKT HD CAP, RoHS, M4 X 8.0	21
-	7	7	1-18028-2	WASHER, FLAT, REG M4	20
-	1	1	2119533-6	STRIPPER, SIDE FEED	19
-	-	-	-	-	10
1	1	1	4-853720-3	BLADE, SLUG	9
1	2	1	1633054-6	ANVIL, SPECIAL	8
-	1	1	240641-7	SPACER	7
-	-	-	-	-	6
-	-	-	-	-	5
-	1	1	238009-4	BLOCK, FL CRIMPER SPACER	4
1	2	1	8-1803016-8	CRIMPER, INSULATION F	3
-	1	1	455888-7	SPACER, CRIMPER -	2
1	2	1	5-1803188-5	CRIMPER, WIRE	1

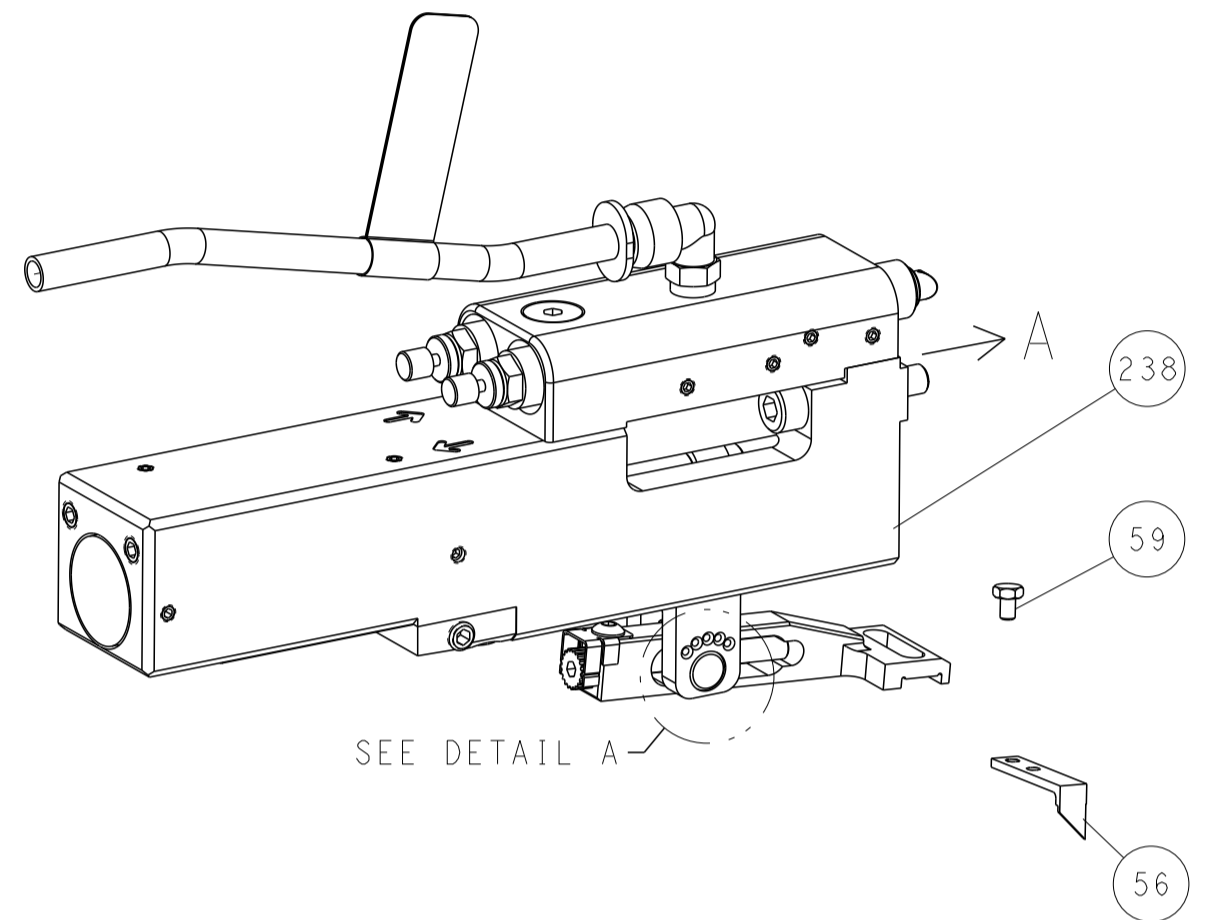
DIMENSIONS:		TOLERANCES UNLESS OTHERWISE SPECIFIED:		MATERIAL:		FINISH:	
mm	0 PLC ±	1 PLC ±	2 PLC ±	3 PLC ±	4 PLC ±	ANGLES ±	FINISH ±
MATERIAL				FINISH			

OWN	B. WEAVER	21OCT2015	 TE Connectivity Harrisburg, PA 17105-3608
CHK	G. BAILEY	21OCT2015	
APVD	G. BAILEY	21OCT2015	NAME
PRODUCT SPEC			Ocean Side Feed Applicator
APPLICATION SPEC			SIZE
MATERIAL			CAGE CODE
FINISH			DRAWING NO
WEIGHT			RESTRICTED TO
Customer Accessible Production Drawing			SCALE
SHEET			REV

LOC		DIST		REVISIONS			
A	66	P	LYR	DESCRIPTION	DATE	OWN	APVD
		-		SEE SHEET 1			

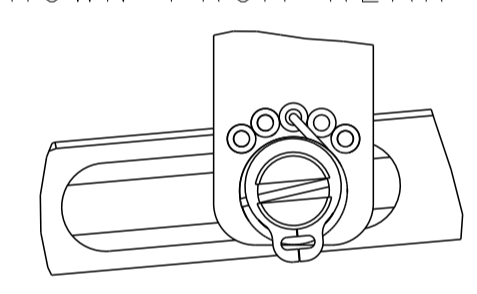
FEED TYPE

PNEUMATIC



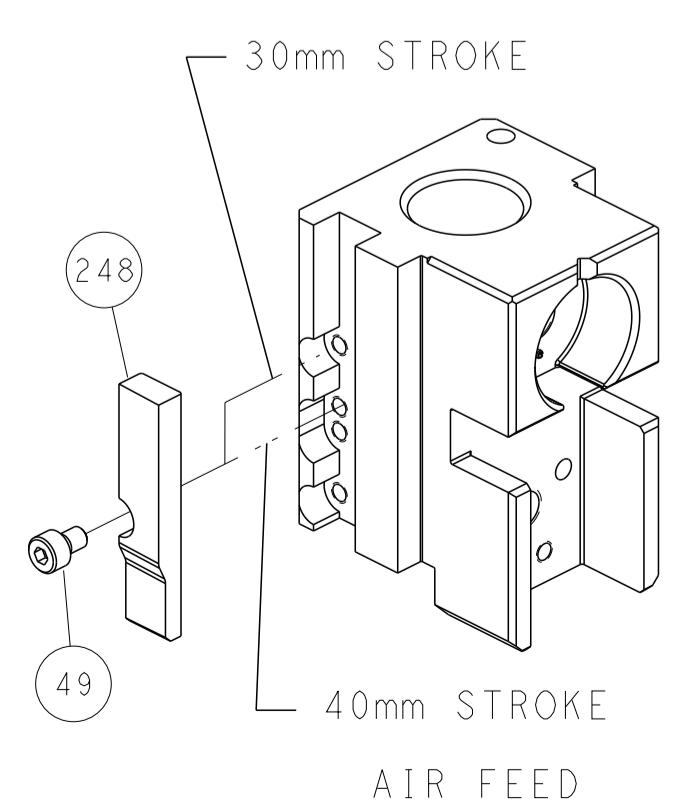
SEE DETAIL A

FEED SPRING SETTING POSITION (SHOWN FROM REAR SIDE)

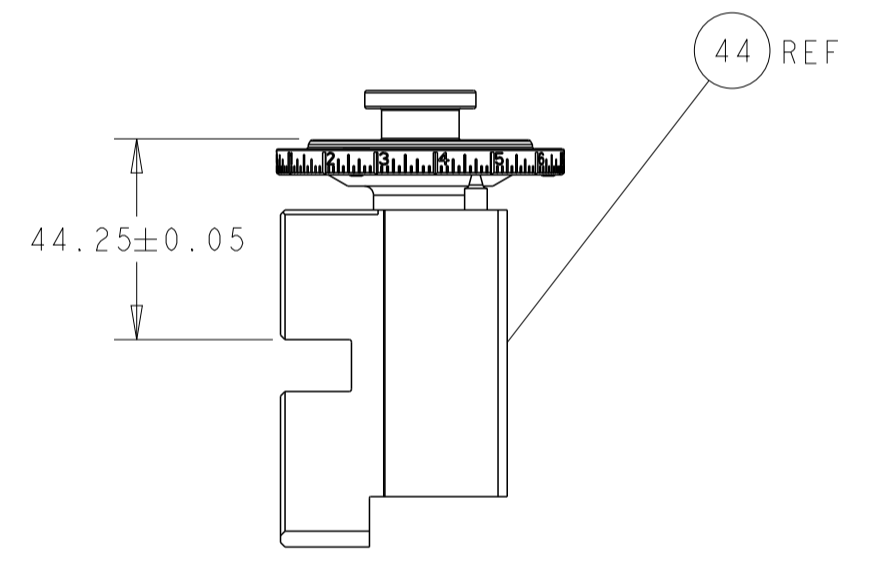
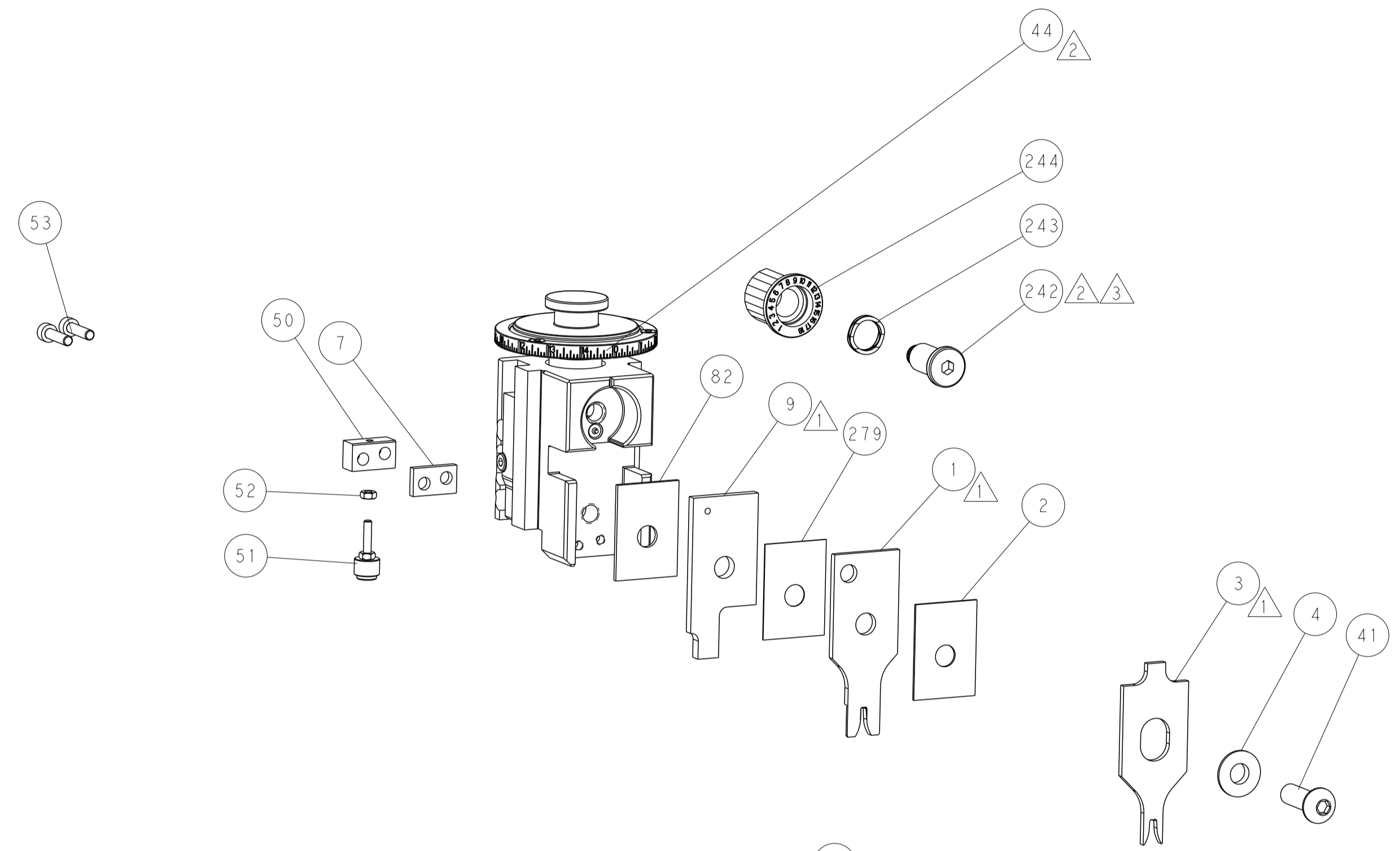


DETAIL A

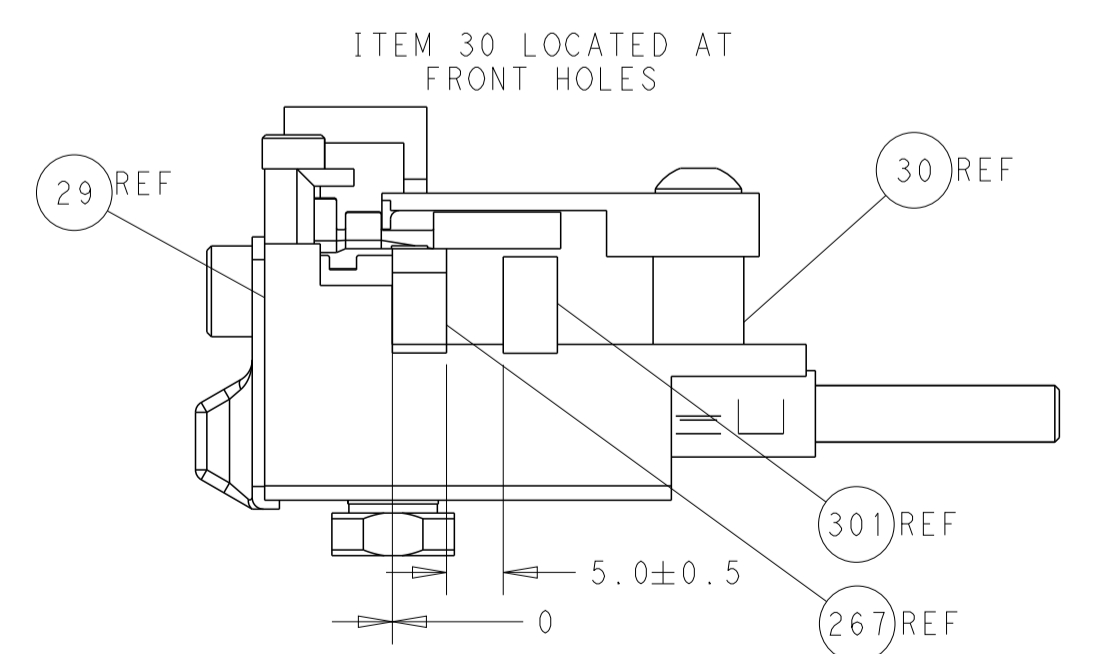
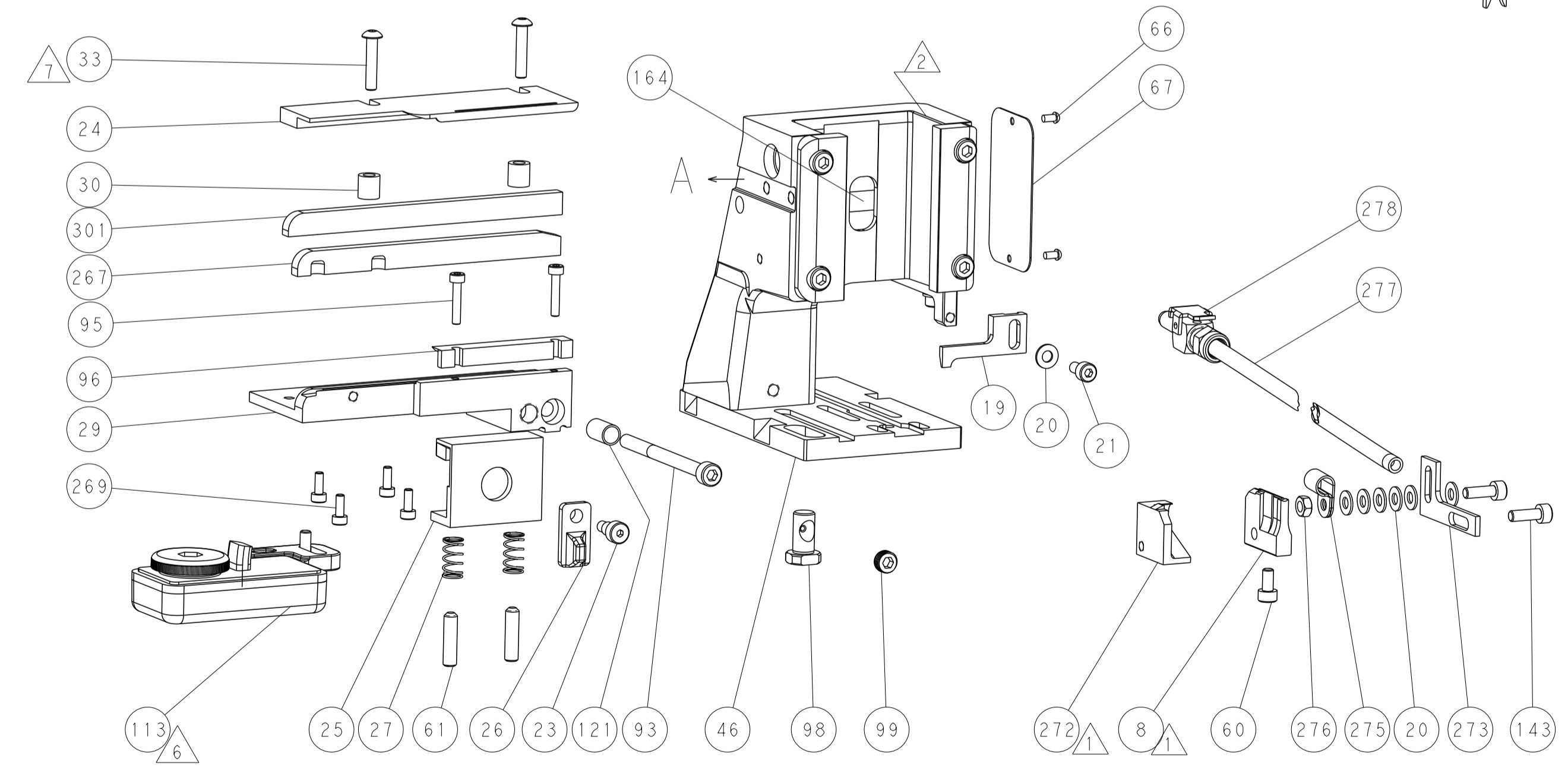
CAM POSITION



AIR FEED



RAM SET-UP



FEED TRACK POSITION
GUIDE BY WIRE BARREL

<small>THIS DRAWING IS UNPUBLISHED. RELEASED FOR PUBLICATION 2015. COPYRIGHT 2015 BY TYCO ELECTRONICS CORPORATION. ALL RIGHTS RESERVED.</small>		DWN B. WEAVER 21OCT2015 CHK G. BAILEY 21OCT2015 APVD G. BAILEY 21OCT2015	TE Connectivity Harrisburg, PA 17105-3608
DIMENSIONS: mm TOLERANCES UNLESS OTHERWISE SPECIFIED: 0 PLC ± 1 PLC ± 2 PLC ± 3 PLC ± 4 PLC ± ANGLES ± MATERIAL - FINISH -		NAME Ocean Side Feed Applicator PRODUCT SPEC - APPLICATION SPEC - SIZE CAGE CODE DRAWING NO. A1 00779 C=2836084 WEIGHT - Customer Accessible Production Drawing	RESTRICTED TO - SCALE 1:2 SHEET 2 OF 4 REV H