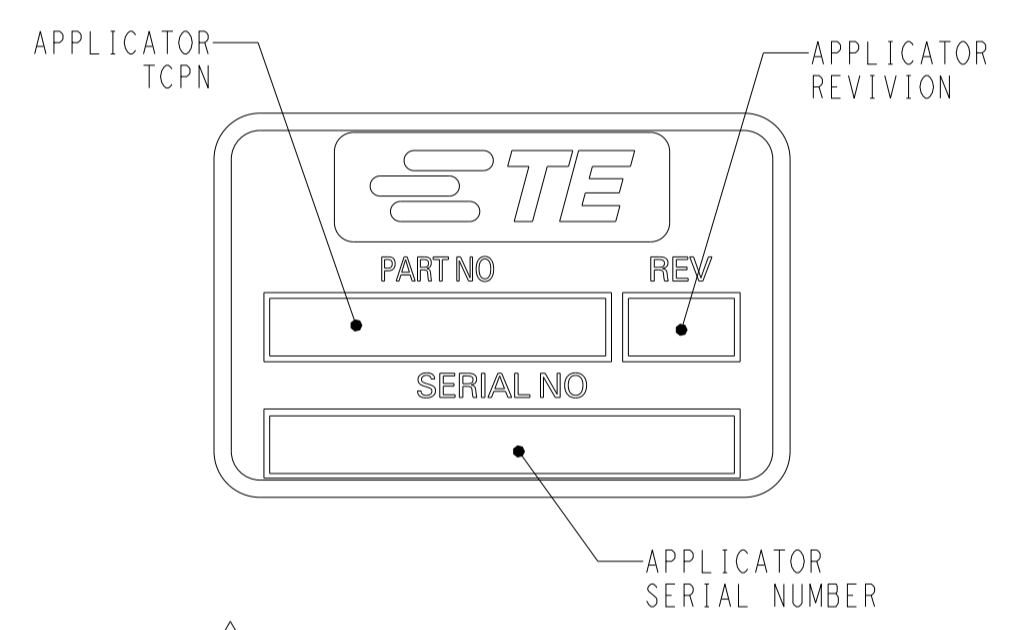


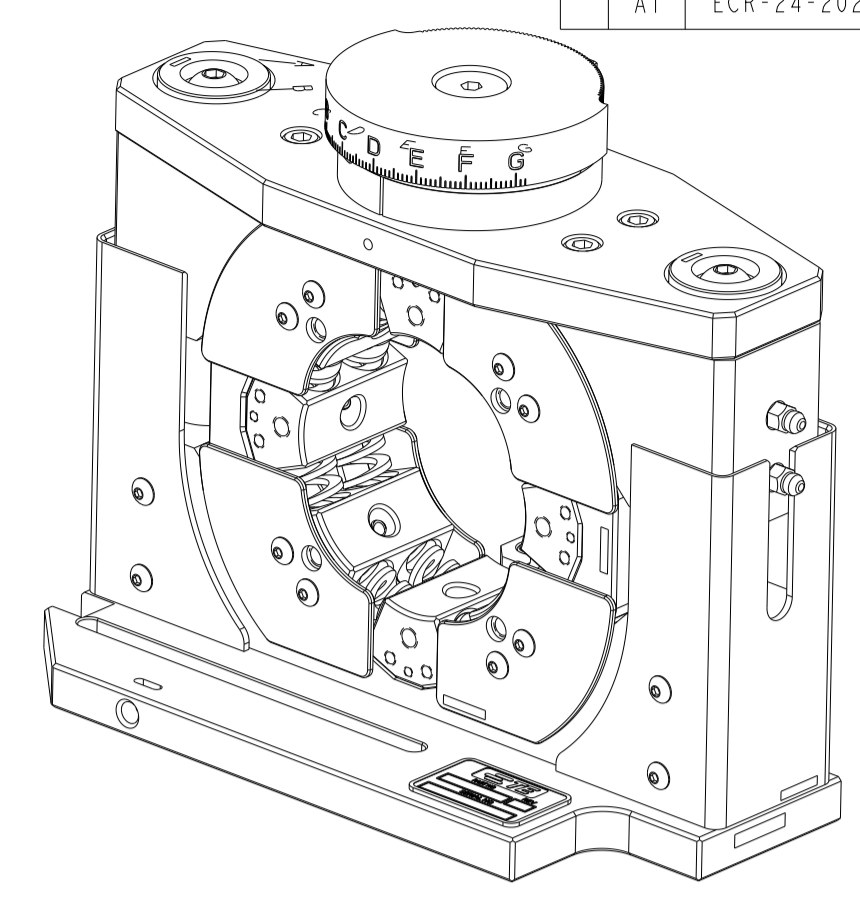
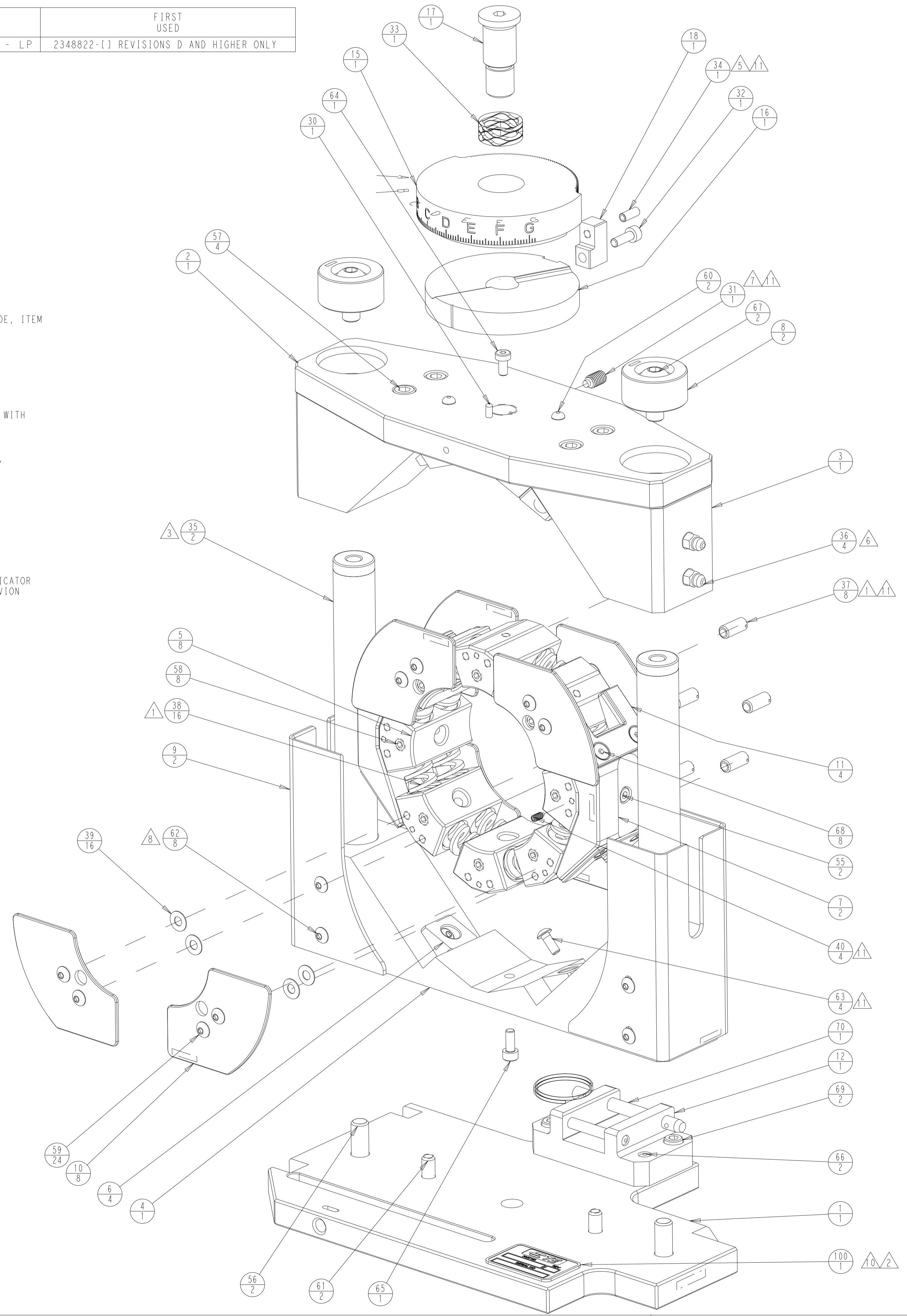
PART NUMBER	REV	DESCRIPTION	FIRST USED
2440896-1	A	SRC APPLICATOR, MID FORCE - LP	2348822-[] REVISIONS D AND HIGHER ONLY

REVISIONS					
P	LTN	DESCRIPTION	DATE	OWN	APVD
7		REVISED	06NOV2023	JL	YY
8		REVISED	26DEC2023	JL	YY
A		RELEASED	31JAN2024	JL	YY
A1		ECR-24-202372	11MAR2024	JL	YY

- 1 RECOMMENDED SPARE PARTS.
- 2 MARK ITEM 100 (ID TAG) AS SHOWN PER TEC-115-67-1 OR 2.
- 3 ITEMS 35, PRESS-IN IF ITEM NO 1 & 4 ARE MOUNT TOGETHER. VERIFY WHETHER ITEM 35 ARE INSTALLED IN PLACE BY DIMENSION CHECK.
- 4. TORQUE RECOMMENDATIONS PER 101-35000 UNLESS OTHERWISE SPECIFIED.
- 5 INSTALL ITEM 34 INTO ITEM 18 AFTER ITEMS 15, 16, 17, 18 AND 33 HAVE BEEN INSTALLED ON ITEM 2. TURN ITEM 34 UNTILL IT BOTTOMS ON ITEM 15 AND BACK ITEM 34 OUT 1/4 TURN.
- 6 TORQUE ITEMS 36 TO 50in/lbs (5.6Nm).
- 7 TURN ITEM 31 UNTIL IT TOUCHES ITEM 10 THEN TIGHTEN AN ADDITIONAL 1/4 - 1/2 TURN.
- 8 ITEM NO 62 - BACKGROUND OF HOLE IN GUARD SIDE, ITEM NO 9.
- 9. RECOMMENDED TERMINATOR:
HV-20 TERMINATOR
TCPN 2348822-1 OR 2348822-2.
*ONLY TO USE WITH BASE PLATE ASSEMBLY,
TCPN 2384466-4.
- 10 APPLY IN APPROXIMATE AREA AS SHOWN. FIXING WITH TCPN 25527-6 TYPE, POLYURETHANE FOAM
- 11 APPLY LOCTITE 242 TO ITEM31, ITEM34, ITEM37, ITEM40, ITEM63.
- 12 TURN ITEM 37 TO PROPER PLACE.



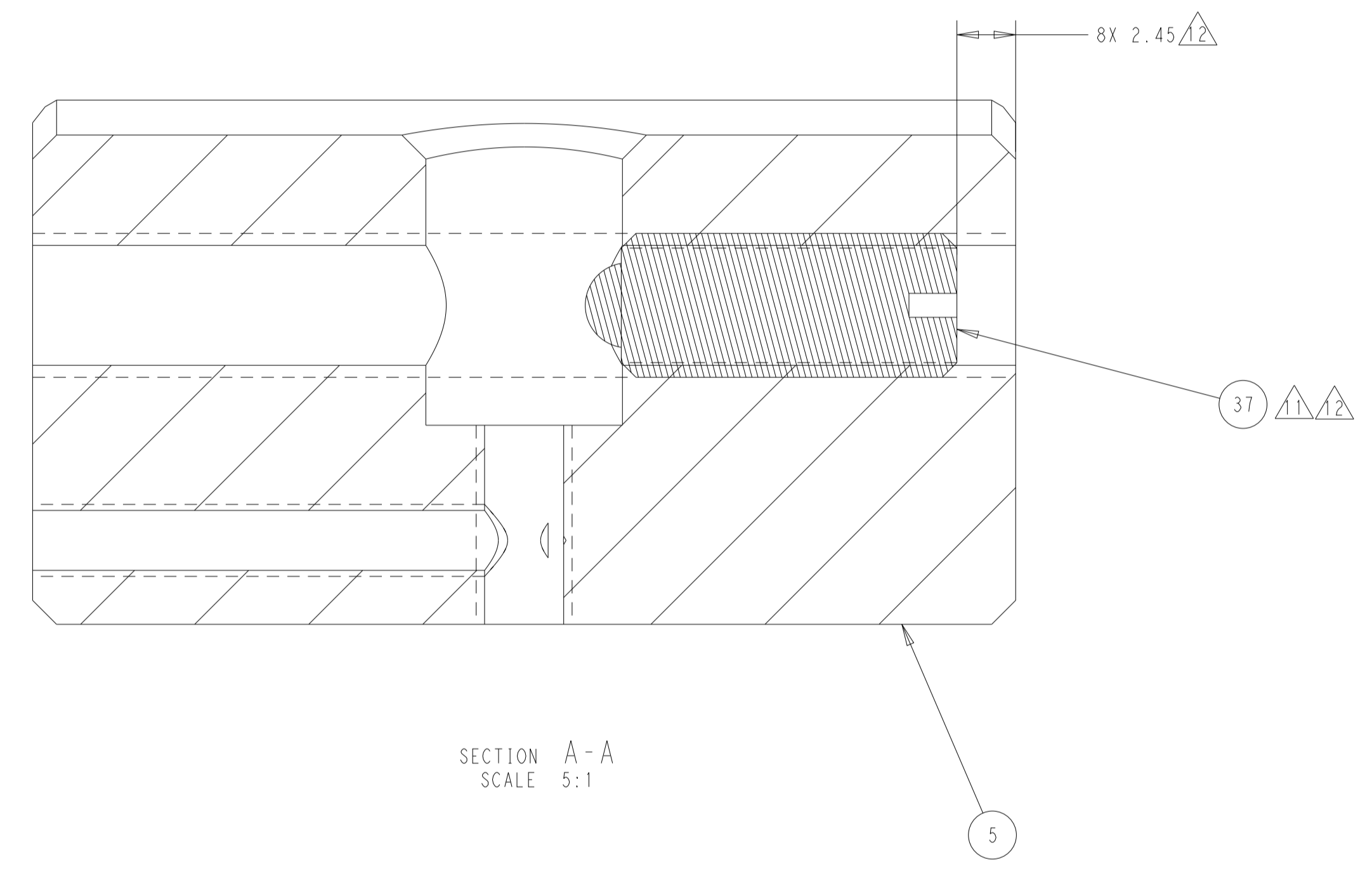
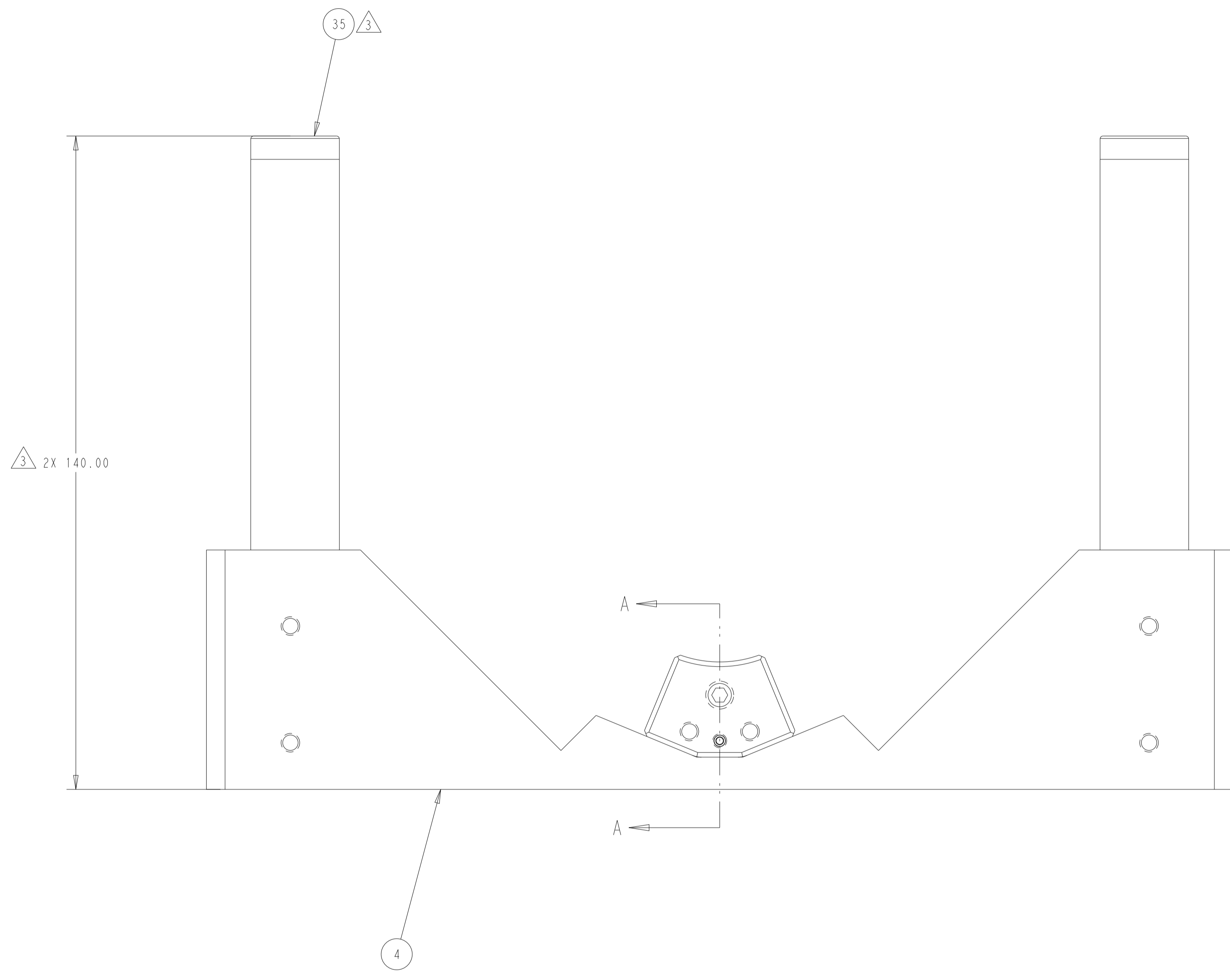
2 IDENTIFICATION PLATE MARKING SCALE 2:1



ITEM NO	QTY	DESCRIPTION	ITEM NO	
1	-	26704-5	PLATE, IDENTIFICATION	100
1	-	2168940-2	PIN, SELF-LOCKING, QUICK-RELEASE	70
2	-	2-18023-0	SCR, SKT HD CAP M5 X 16.0	69
8	-	1-994236-7	SCR, FLT SKT HD CAP M4 X 8.0	68
2	-	2-18024-5	SCR, BTN SKT HD CAP (M8 X 20.0)	67
2	-	2030423-7	PIN, DOWEL 6 X 22	66
1	-	1-18023-1	SCR, SKT HD CAP M4 X 10.0	65
1	-	519002-9	SCREW,CAP,LOW SOCKET HEAD	64
4	-	18024-7	SCR, BTN SKT HD CAP (M4 X 10.0)	63
8	-	981284-8	WASHER, FLAT	62
2	-	4-519000-2	SCREW, CAP, SOCKET HD, METRIC	61
2	-	2030423-6	PIN, DOWEL 6 X 18	60
24	-	18024-6	SCR, BTN SKT HD CAP (M4 X 8.0)	59
8	-	5-519012-6	SCR, SET, FLT POINT, M6x14	58
4	-	2-18023-8	SCR, SKT HD CAP M6 X 16.0	57
2	-	5-519000-4	ZYLINDERSCHRAUBE SCREW DIN EN ISO 4762	56
2	-	1-18023-2	SCR, SKT HD CAP M4 X 12.0	55
4	-	2323664-1	SCR, SET, NYLON-TIP, M3 X 6	40
16	-	2-981284-8	WASHER, FLAT	39
1	-	2388770-5	SPRING, COMPRESSION, STRONG	38
8	-	2030790-4	PLUNGER,M6 THREAD,14LONG, STANDARD SPRING	37
4	-	992231-1	FITTING LUBRICATION	36
2	-	2438994-2	GUIDE PILLAR	35
1	-	2079160-3	SPRING PLUNGER, M4	34
1	-	2330700-1	SPRING, WAVE	33
1	-	2168863-3	SCR, SHC, THD LOCKING, M4x12	32
1	-	2323664-2	SCR, SET, NYLON-TIP, M6 X 10	31
1	-	1-992946-4	PIN, DOWEL 3 X 8	30
1	-	2305853-1	STOP	18
1	-	2459176-2	BOLT	17
1	-	2305851-2	WIRE DISK, BOTTOM	16
1	-	2305850-2	WIRE DISK, TOP	15
1	-	2466300-1	MOUNT, FIXTURE	12
4	-	2466293-1	SPACER, JAW SIDE	11
8	-	2439434-1	COVER PLATE	10
2	-	2439433-1	GUARD, SIDE	9
2	-	2439432-1	STOP BOLT	8
2	-	2439431-1	JAW, SIDE	7
4	-	2459177-1	ADAPTOR HOLDER	6
8	-	2439430-1	ADAPTER BLOCK, SLIDER	5
1	-	2439428-1	HOLDER BOTTOM, DIE SEGMENTS	4
1	-	2439427-1	HOLDER TOP, DIE SEGMENTS	3
1	-	2439426-1	BASE PLATE, TOP	2
1	-	2439425-1	BASE PLATE	1

THIS DRAWING IS A CONTROLLED DOCUMENT.		OWN	L. SANDHU	11NOV2022		TE Connectivity
DIMENSIONS:		CHK	L. SANDHU	09DEC2022		
mm	0 PLC ±	TOLERANCES UNLESS OTHERWISE SPECIFIED:		APVD	M. PAJUELO	09DEC2022
	1 PLC ±0.1			NAME		SRC APPLICATOR, MID FORCE - LP
	3 PLC ±0.02			PRODUCT SPEC		-
	4 PLC ±			APPLICATION SPEC		-
	ANGLES ±			SIZE		CAGE CODE DRAWING NO
	FINISH ±			RESTRICTED TO		-
MATERIAL	-	WEIGHT	-	A1		00779 ©=2440896
CUSTOMER ACCESSIBLE PRODUCTION DRAWING		SCALE	1:1	SHEET	1	OF 2
		REV	A1			

REVISIONS				
P	LTN	DESCRIPTION	DATE	APVD
-	SEE SHEET 1			



THIS DRAWING IS A CONTROLLED DOCUMENT.		OWN: L. SANDHU 11NOV2022	
DIMENSIONS: mm		CHK: L. SANDHU 09DEC2022	
TOLERANCES UNLESS OTHERWISE SPECIFIED:		APVD: M. PAJUELO 09DEC2022	NAME: SRC APPLICATOR, MID FORCE - LP
0 PLC ±0.5	1 PLC ±0.13	PRODUCT SPEC	SIZE: A
2 PLC ±0.13	3 PLC ±0.013	APPLICATION SPEC	CAGE CODE: 00779
4 PLC ±0.013	ANGLES ±	WEIGHT	DRAWING NO: 2440896
FINISH		CUSTOMER ACCESSIBLE PRODUCTION DRAWING	SCALE: 1:1
			SHEET 2 OF 2
			REV A1