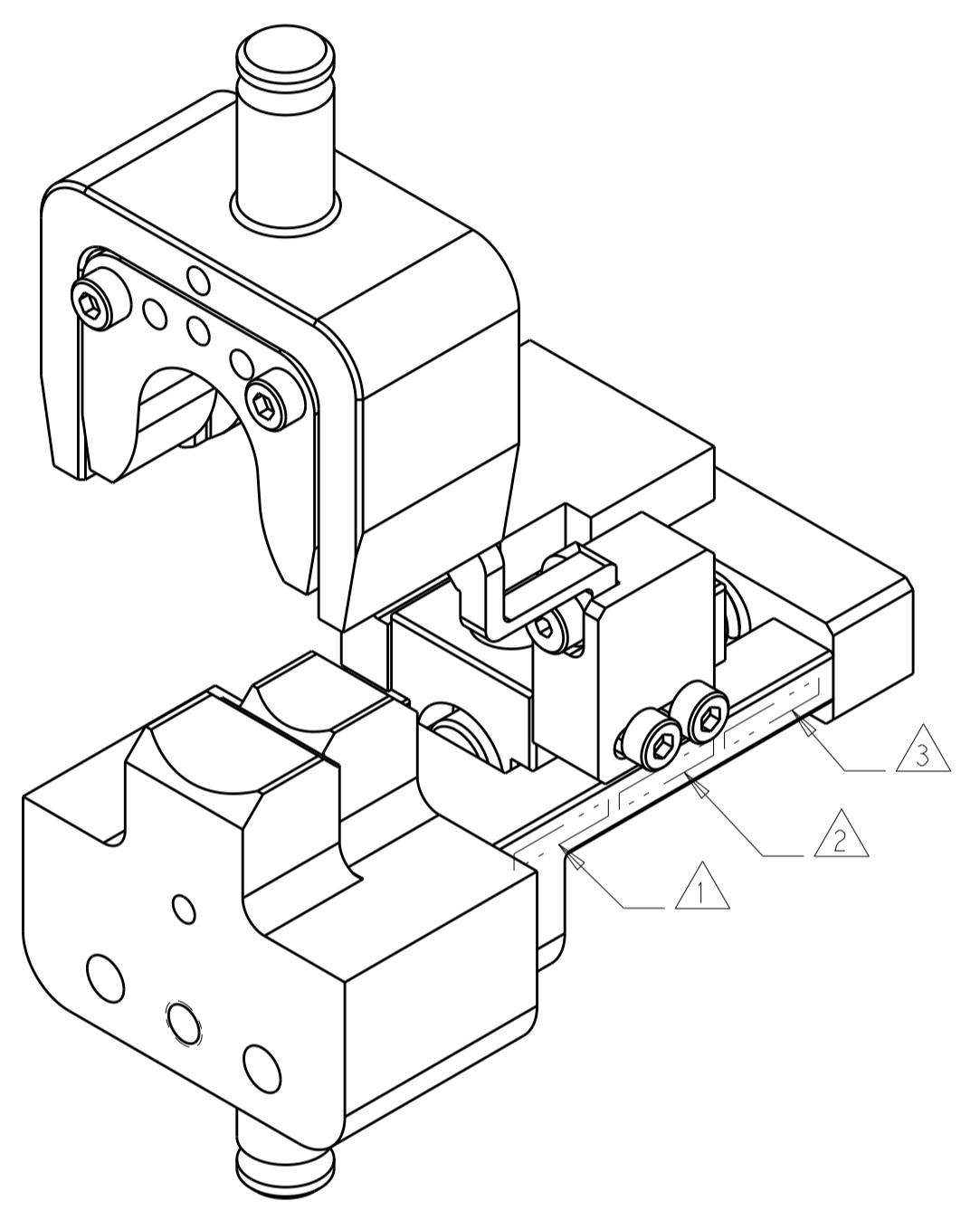
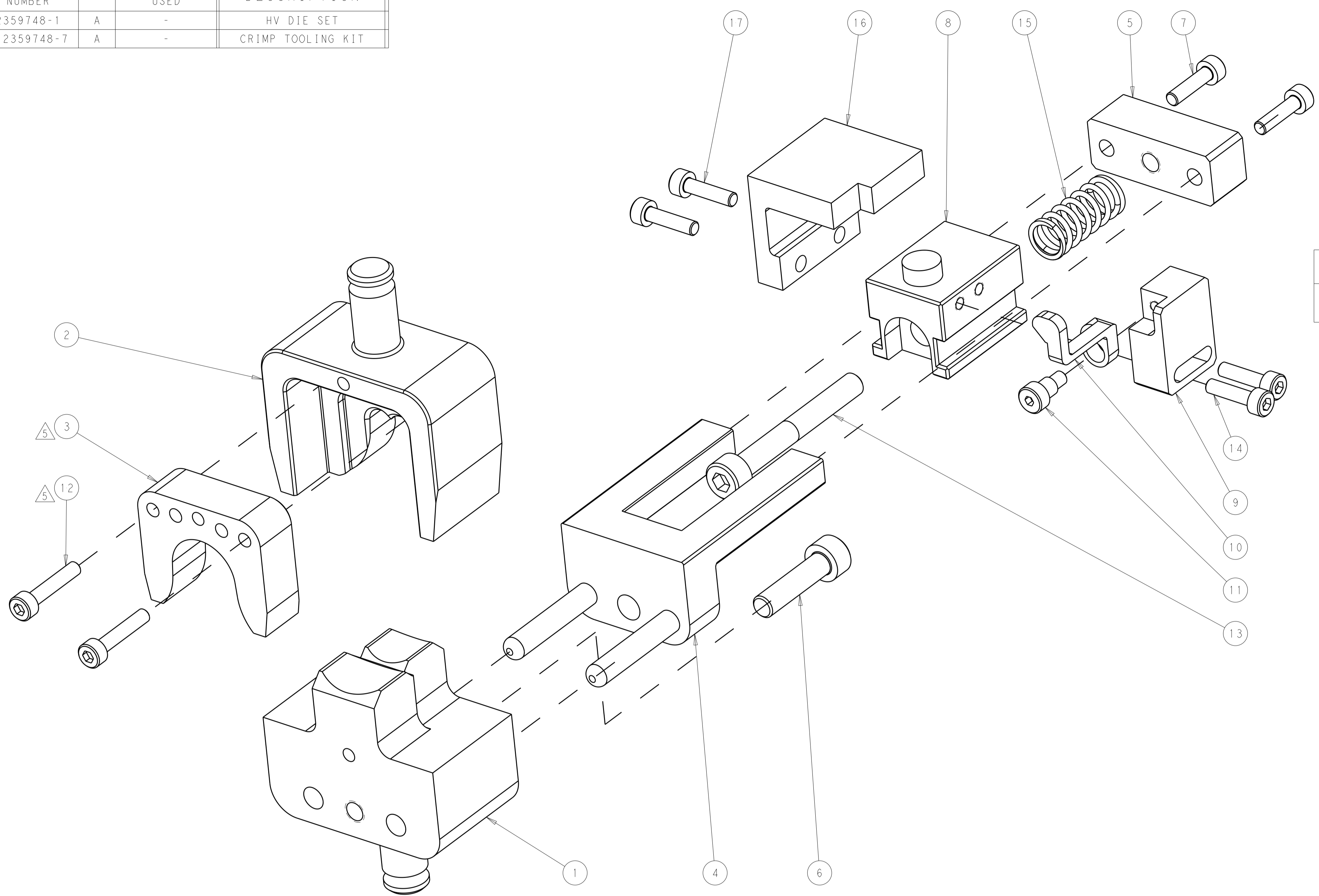


PART NUMBER	REV	FIRST USED	DESCRIPTION
2359748-1	A	-	HV DIE SET
7-2359748-7	A	-	CRIMP TOOLING KIT

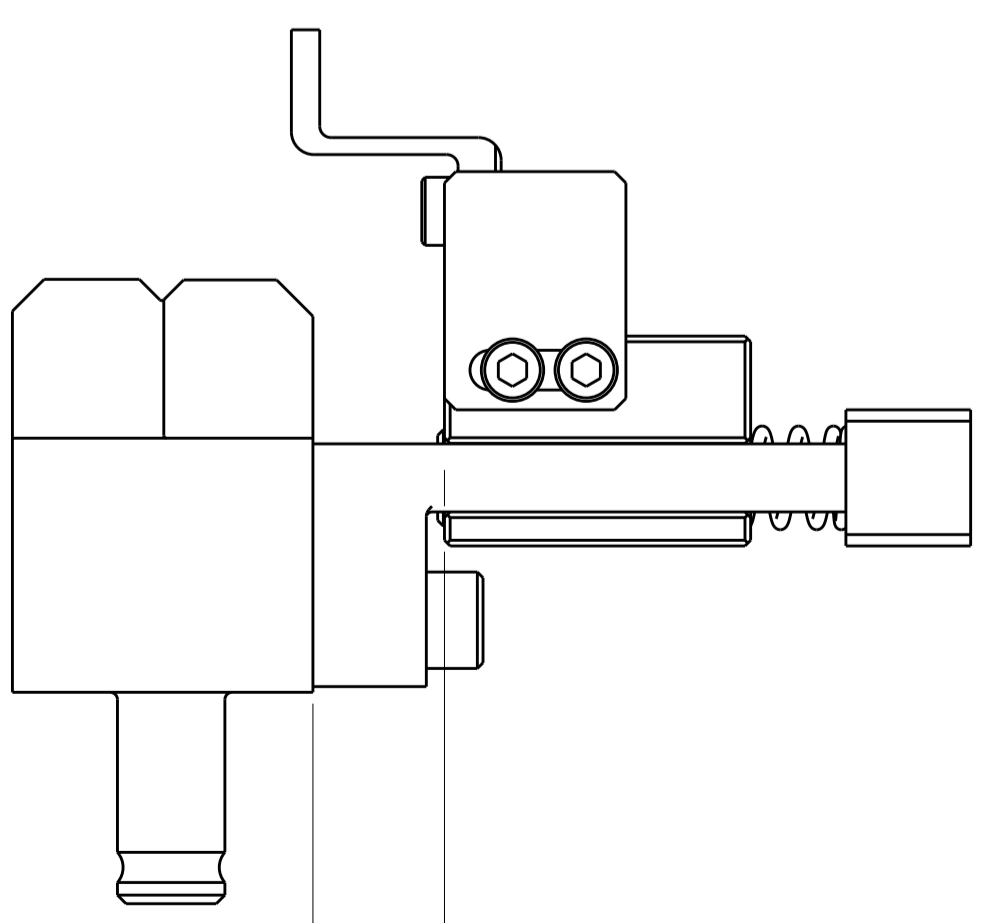
REVISIONS				
REV	DATE	DESCRIPTION	BY	CHK
A	14JUL2020	RELEASED	LG	TE

TERMINAL NAME	TB CABLE LUG, SPECIAL SHAPE
TE TERMINAL PART NUMBER(S)	2363248-1
NON TE TERMINAL PART NUMBER(S)	33277432
APPLICATION SPECIFICATION	33244451
REFERENCE DRAWING	P00162463 - DRAWING-A 009 982 49 02
USED ON	2305470-1 2326378-1
INSTRUCTION SHEET	408-35072

CABLE SUPPLIER / SPECIFICATION	CABLE SIZE	WIRE CRIMP HEIGHT	INSULATION CRIMP HEIGHT	CRIMP HEIGHT REFERENCE SETTING
FLR11Y	25mm <sup>2</sup>	7.4±0.1	11.0±0.5	C5
	16mm <sup>2</sup>	6.8±0.1	10.0±0.5	D9

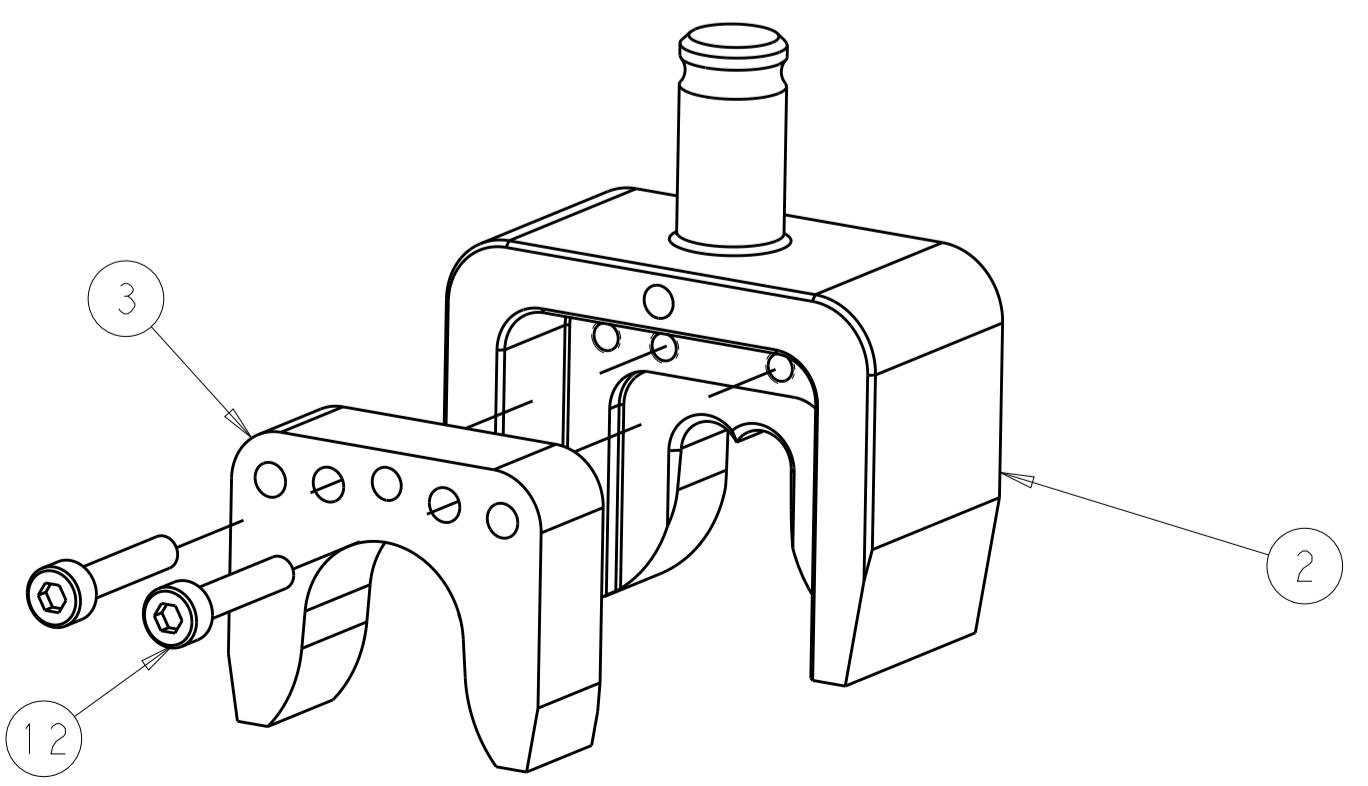


- ① APPLY "DIE SET PN" PER TEC-115-67-2 IN APPROXIMATE AREA SHOWN.
- ② IDENTIFY PART NUMBER AND REVISION LETTER PER TEC-115-67-2 IN APPROXIMATE AREA SHOWN.
- ③ IDENTIFY SERIAL NUMBER PER TEC-115-67-2 IN APPROXIMATE AREA SHOWN.
- 4. TORQUE RECOMMENDATIONS PER 101-35000 UNLESS OTHERWISE SPECIFIED.
- ⑤ CHANGE THE POSITION OF THE INSULATION CRIMPER, ITEM 3, FOR WIRE SIZE 16mm<sup>2</sup>



TERMINAL LOCATOR LOCATION

-	2	-	18023-5	SCR, SKT HD CAP M3 X 12.0	17
-	1	-	2376613-1	STRIPPER BLOCK	16
-	1	-	6-22282-6	SPRING, COMPRESSION	15
-	2	-	18023-5	SCR, SKT HD CAP M3 X 12.0	14
-	1	-	2-18023-4	SCR, SKT HD CAP M5 X 40.0	13
-	2	-	18023-6	SCR, SKT HD CAP M3 X 16.0	12
-	1	-	1-980371-0	SCR, SKT HD SHLDR 4.0 DIA X 4.0	11
-	1	-	2365891-2	WIRE STOP	10
-	1	-	2365890-3	WIRE STOP BASE	9
-	1	-	2361396-3	STOP IPT CONTACT	8
-	2	-	18023-5	SCR, SKT HD CAP M3 X 12.0	7
-	1	-	2-18023-1	SCR, SKT HD CAP M5 X 20.0	6
-	1	-	2234150-1	HOUSING, TERMINAL STOP	5
-	1	-	2234149-1	HOUSING, LOCATOR	4
1	1	-	2234198-5	INSERT, CRIMPER INS O	3
1	1	-	2234197-5	CRIMPER WIRE F	2
1	1	-	2234196-4	ANVIL, COMBINATION	1
-77	-1	U/M	PART NO	DESCRIPTION	ITEM NO



THIS DRAWING IS A CONTROLLED DOCUMENT.		CHK K. HUANG	15JAN2020	
DIMENSIONS:		APVD Y. YIN	15JAN2020	
mm	0 PLC ±	NAME DIE ASM, CONTACT TERMINAL 16-25mm <sup>2</sup>		
	1 PLC ±	PRODUCT SPEC		
	2 PLC ±	APPLICATION SPEC		
	3 PLC ±	SIZE CAGE CODE DRAWING NO		
	4 PLC ±	RESTRICTED TO		
	ANGLES ±	A100779C=2359748		
MATERIAL	FINISH	WEIGHT	SCALE 3:2	
Customer Accessible Production Drawing		SHEET 1 OF 1	REV A	