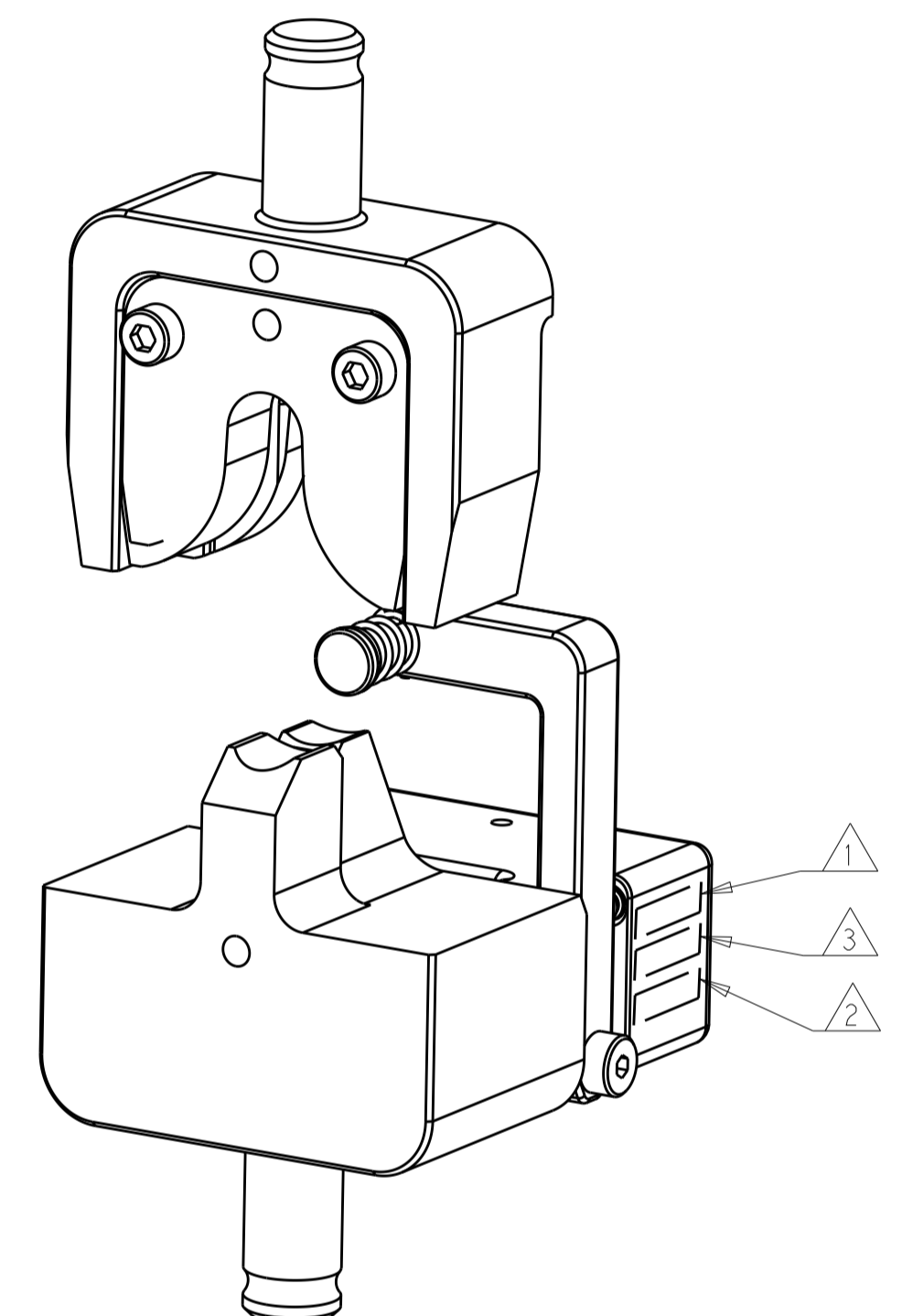
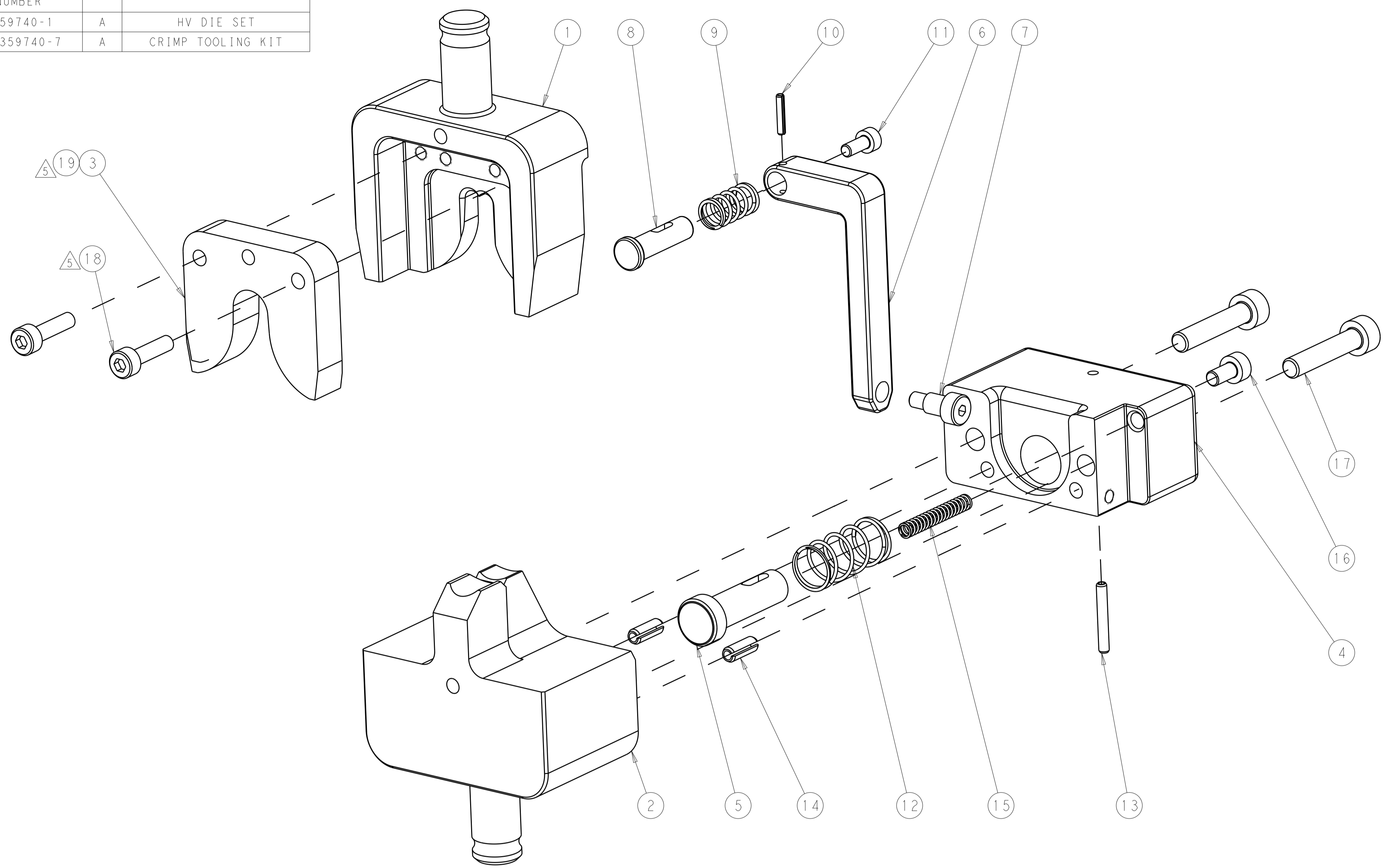


PART NUMBER	REV	DESCRIPTION
2359740-1	A	HV DIE SET
7-2359740-7	A	CRIMP TOOLING KIT

REVISIONS					
P	LTN	DESCRIPTION	DATE	DMN	APVD
A		RELEASED	13MAY2020	LG	TE
A1		ECR-20-012978	14SEP2020	AJ	YY

TERMINAL NAME	TB TAG CONNECTOR DMR8.5
TE TERMINAL PART NUMBER(S)	2358849-1
NON TE TERMINAL PART NUMBER(S)	4102 1002
APPLICATION SPECIFICATION	NEXANS SPEC 4102 1002
USED ON	2305470-1 2326378-1
INSTRUCTION SHEET	-

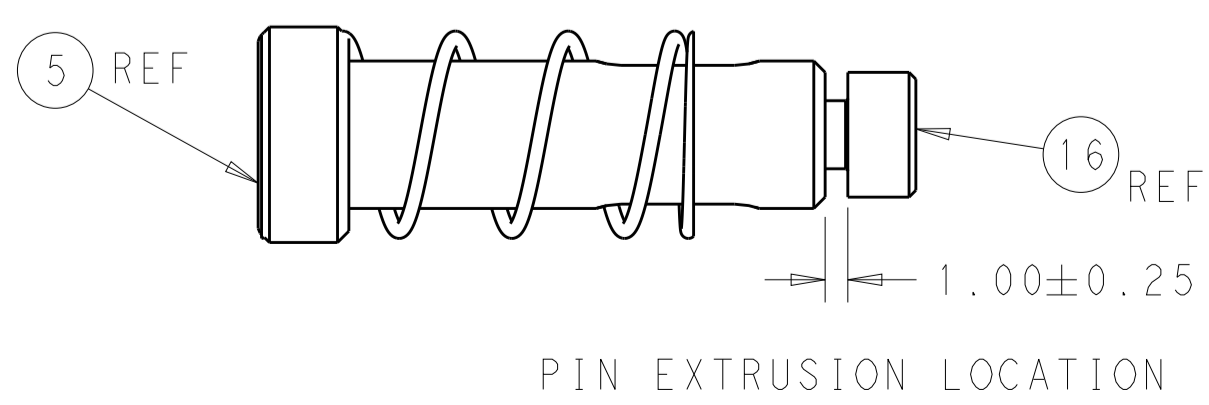
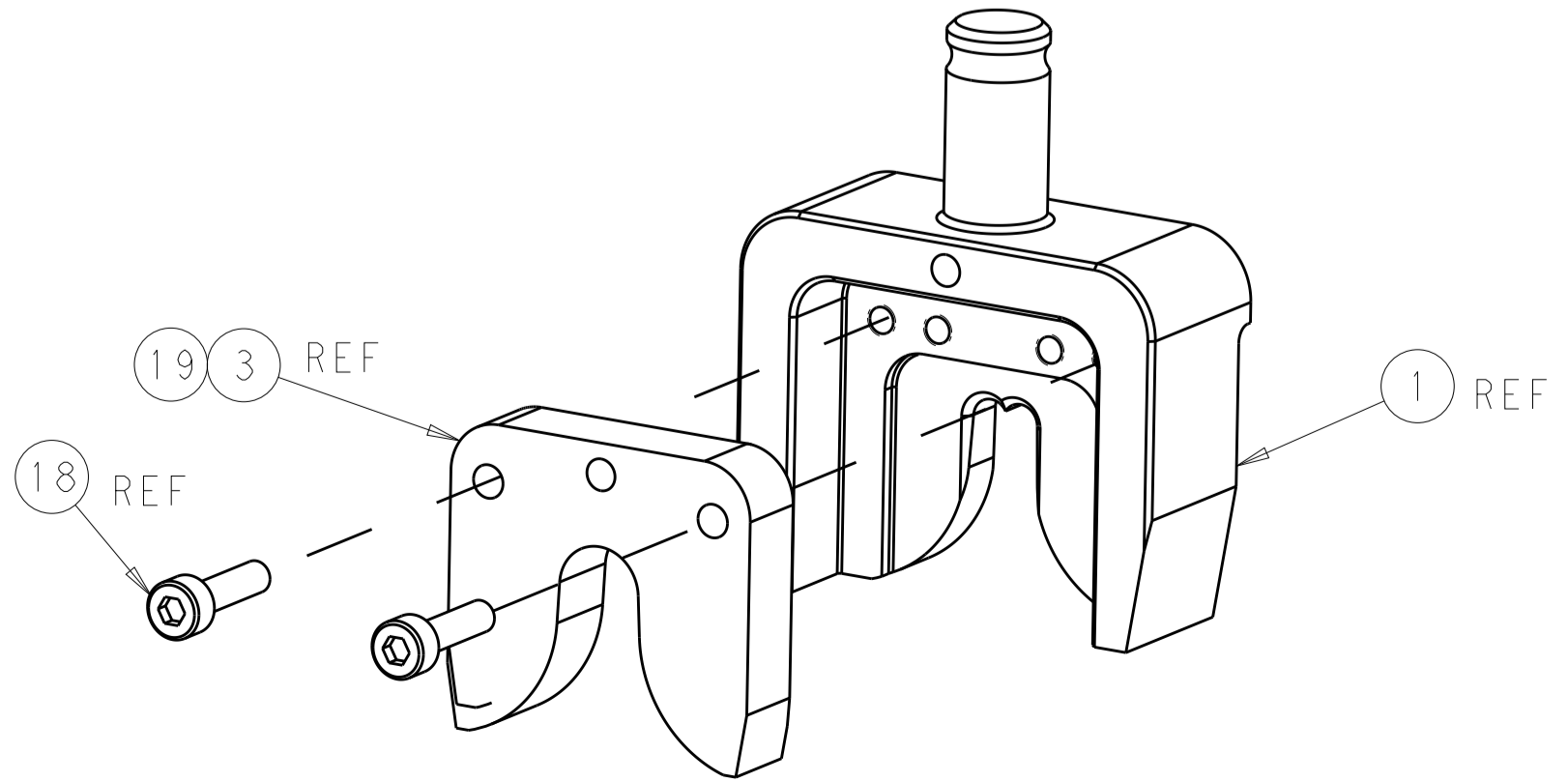
CABLE SUPPLIER/SPECIFICATION	CABLE SIZE	WIRE CRIMP HEIGHT	INSULATION CRIMP HEIGHT	CRIMP HEIGHT REFERENCE SETTING
FLR	10mm ²	4.00±0.05	8.5±0.2	C3
	6mm ²	3.72±0.05	6.2±0.2	D0



- △ APPLY "DIE SET PN" PER TEC-115-67-2 IN APPROXIMATE AREA SHOWN.
- △ IDENTIFY PART NUMBER AND REVISION LETTER PER TEC-115-67-2 IN APPROXIMATE AREA SHOWN.
- △ IDENTIFY SERIAL NUMBER PER TEC-115-67-2 IN APPROXIMATE AREA SHOWN.
- 4. TORQUE RECOMMENDATIONS PER 101-35000 UNLESS OTHERWISE SPECIFIED.
- △ THE INSULATION CRIMPER WILL NEED CHANGED BASED ON THE WIRE SIZE BEING USED. SEE BELOW FOR THE PROPER INSULATION CRIMPER PART NUMBER FOR EACH WIRE SIZE.

WIRE SIZE	INSULATION CRIMPER ITEM NUMBER	INSULATION CRIMPER PART NUMBER
10mm ²	3	2234198-7
6mm ²	19	2234198-8

QTY	ITEM NO	PART NO	DESCRIPTION	ITEM NO
-	1	2234198-8	INSERT, CRIMPER INS 0	19
-	2	18023-5	SCR, SKT HD CAP M3 X 12.0	18
-	2	1-18023-4	SCR, SKT HD CAP M4 X 20.0	17
-	1	18023-2	SCR, SKT HD CAP M3 X 6.0	16
-	1	22278-9	SPRING, COMPRESSION	15
-	2	6-993111-4	PIN, SLOTTED SPRING 3.0 X 8.0	14
-	1	4-993111-4	PIN, SLOTTED SPRING 2.0 X 14.0	13
-	1	22282-5	SPRING, COMPRESSION	12
-	1	6-18023-7	SCR, SKT HD CAP M2.5 X 6.0	11
-	1	3-993111-9	PIN, SLOTTED SPRING 1.5 X 8.0	10
-	1	1-22280-3	SPRING, COMPRESSION	9
-	1	2326059-3	PIN, WIRE STOP	8
-	1	1-980371-1	SCR, SKT HD SHLDR 4.0 DIA X 5.0	7
-	1	2361413-1	BASE, WIRE STOP	6
-	1	2361411-1	PIN, EXTRUSION	5
-	1	2361410-1	RETAINER, SPRING	4
-	1	2234198-7	INSERT, CRIMPER INS 0	3
1	1	2361405-1	ANVIL, COMBINATION	2
1	1	2234197-4	CRIMPER WIRE F	1
-77	-1	PART NO	DESCRIPTION	ITEM NO



THIS DRAWING IS A CONTROLLED DOCUMENT. DMN: H. HUANG 25NOV2019
 CHK: K. HUANG 25NOV2019
 APVD: Y. YIN 25NOV2019

DIMENSIONS: mm
 TOLERANCES UNLESS OTHERWISE SPECIFIED:
 0 PLC ±
 1 PLC ±
 2 PLC ±
 3 PLC ±
 4 PLC ±
 ANGLES ±

MATERIAL: -
 FINISH: -

WEIGHT: -
 SCALE: 3:2

Customer Accessible Production Drawing

TE Connectivity
 DIE ASM, CONTACT TERMINAL 6-10mm²
 A100779C=2359740
 SHEET 1 OF 1 REV A1