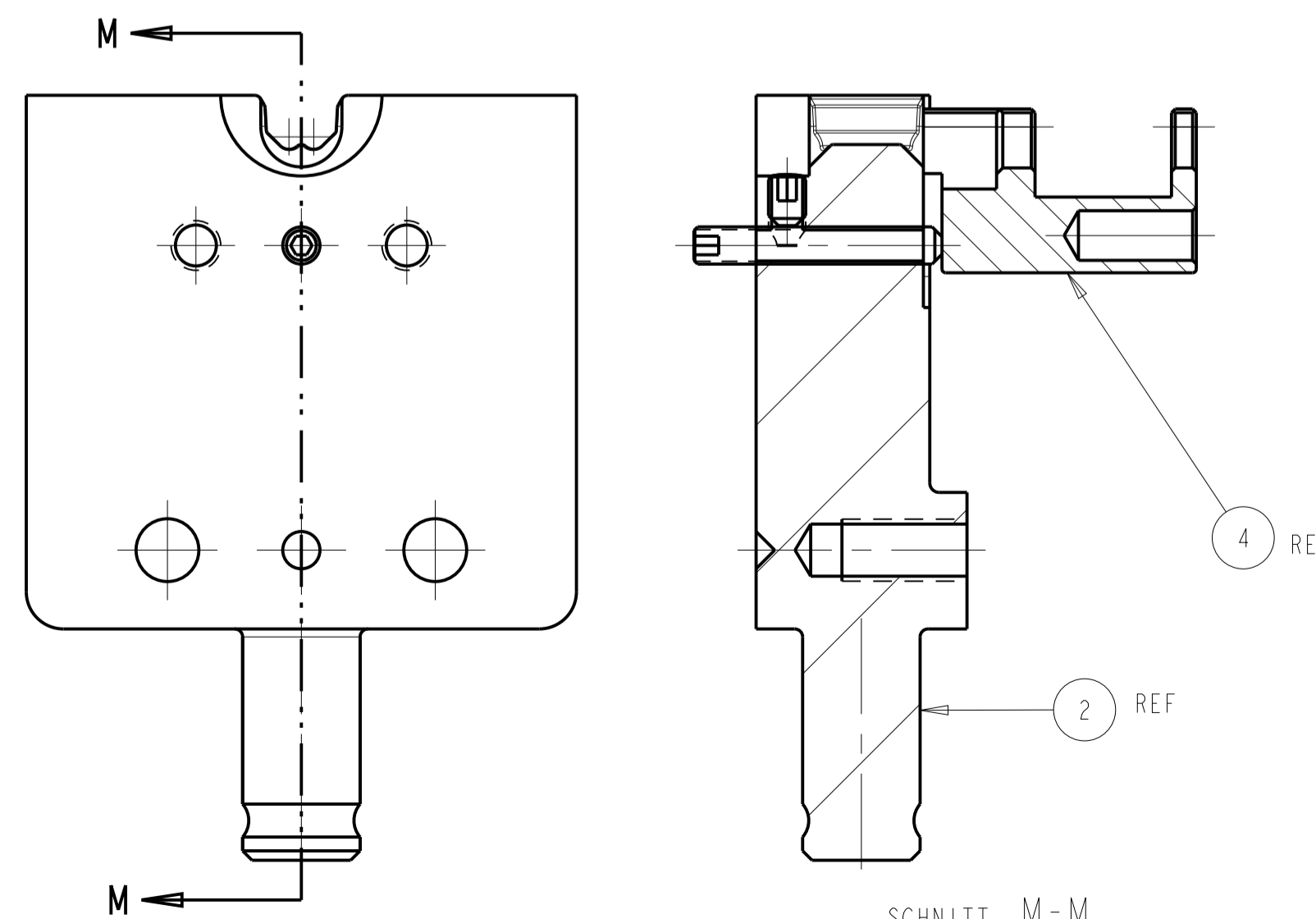
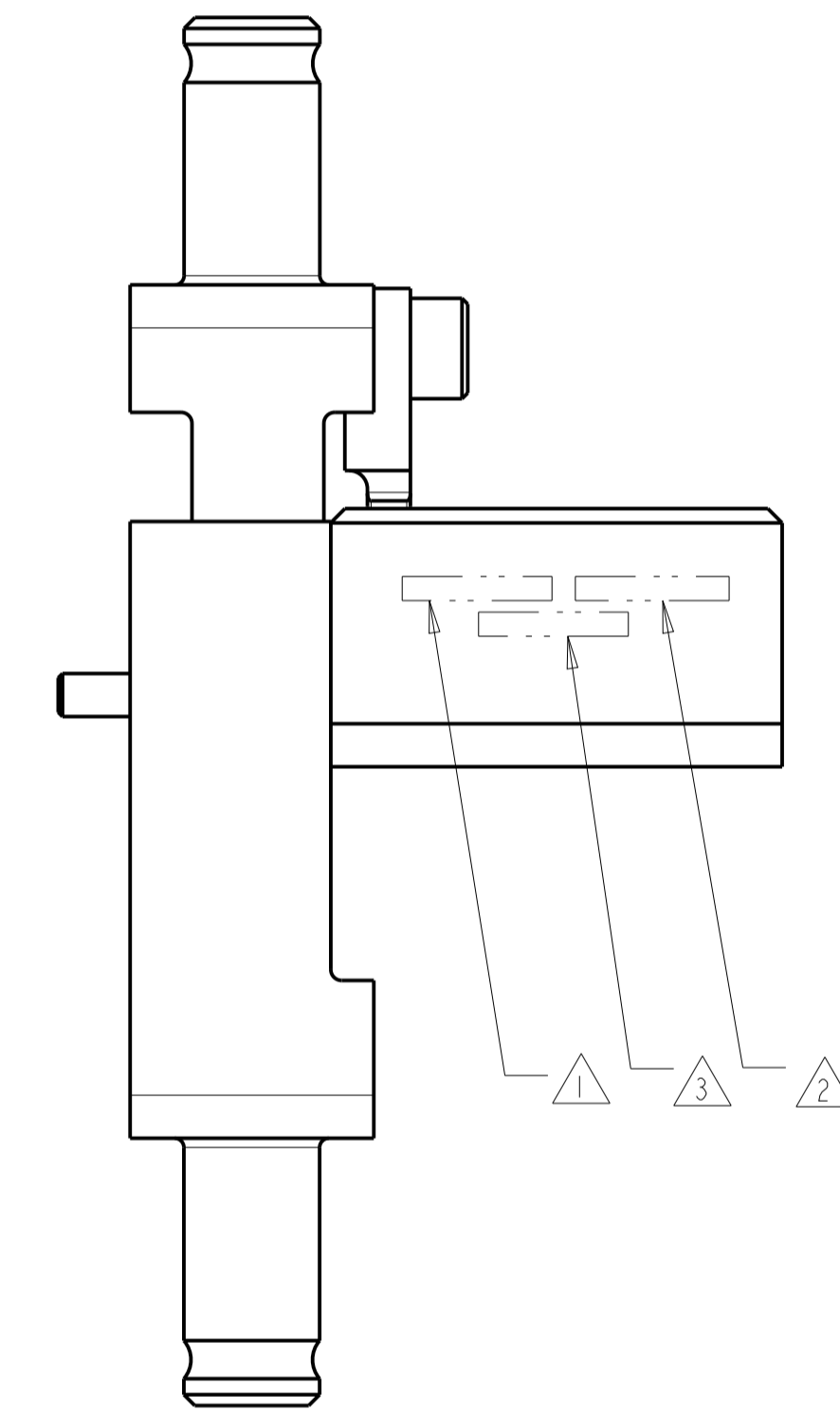
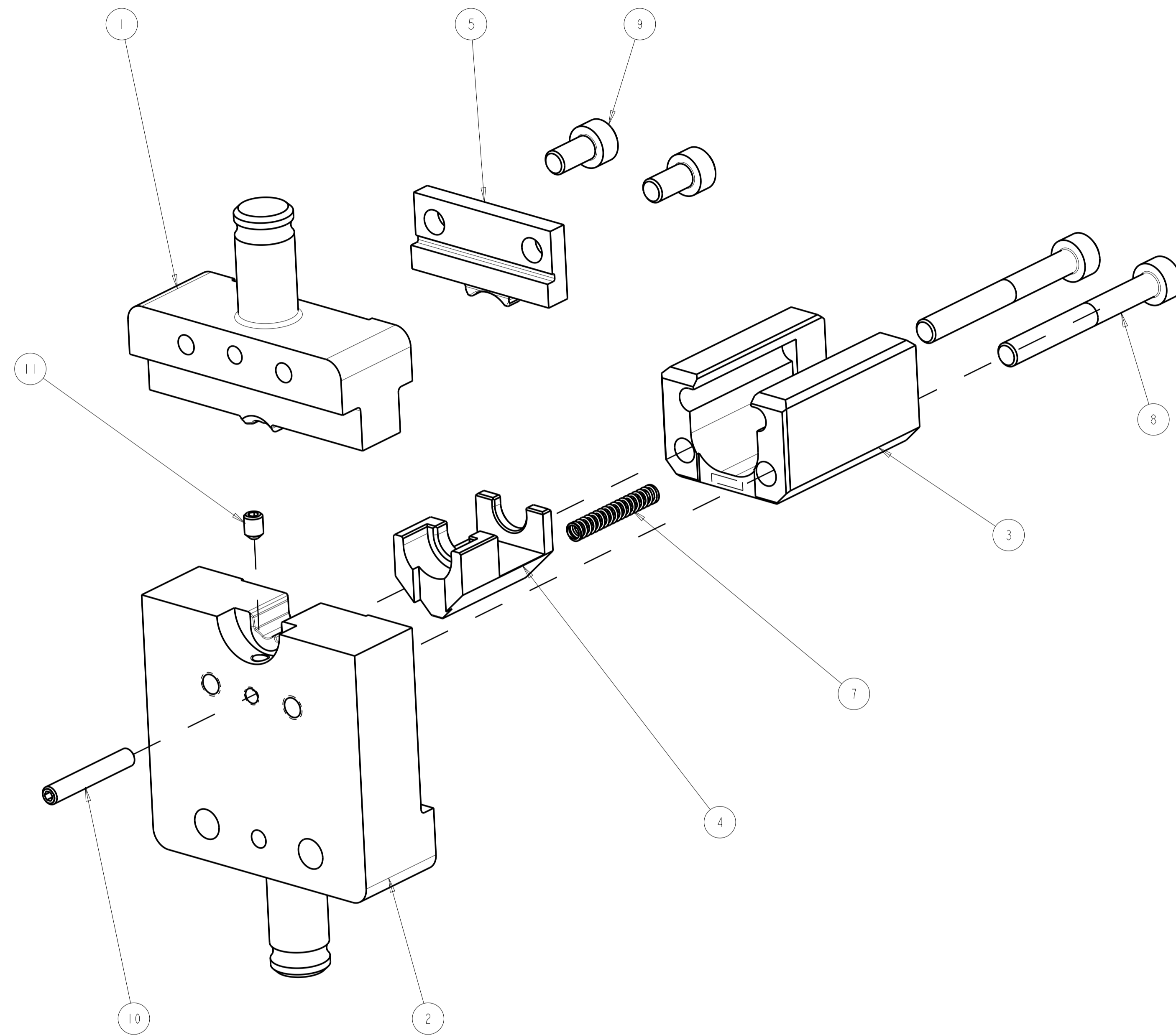


PART NUMBER	REV	FIRST USED	DESCRIPTION
2359717-1	C	-	HV DIE SET
7-2359717-7	C	-	CRIMP TOOLING KIT
9-2359717-1	C	-	DIE SET WITH DIE HOLDER

REVISIONS				
REV	LTN	DESCRIPTION	DATE	APPROV
A		RELEASED	06AUG2020	LG TE
B		ECR-21-004695	21APR2021	LS MP
C		ECR-20-014972	16JUN2021	LG TE

TERMINAL NAME	SOCKET CONTACT, DIA. 6.0		
TE TERMINAL PART NUMBER(S)	2327544-4		
APPLICATION SPECIFICATION	114-101097		
REFERENCE DRAWING	-		
USED ON	2305470-1	2326378-1	
INSTRUCTION SHEET	-		

CABLE SUPPLIER / SPECIFICATION	CABLE SIZE	CRIMP HEIGHT	CRIMP HEIGHT REFERENCE SETTING
LEONI / FLY PVC / LV112-1	6mm2	3.7±0.1	C9



GUIDE LOCATION

- 1 APPLY "DIE SET PN" PER TEC-115-67-2 IN APPROXIMATE AREA SHOWN.
- 2 IDENTIFY PART NUMBER AND REVISION LETTER PER TEC-115-67-2 IN APPROXIMATE AREA SHOWN.
- 3 IDENTIFY SERIAL NUMBER PER TEC-115-67-2 IN APPROXIMATE AREA SHOWN.
- 4. TORQUE RECOMMENDATIONS PER 101-35000 UNLESS OTHERWISE SPECIFIED.

1	-	-	-	2305470-1	HV MODULAR DIE HOLDER WITH FINE ADJUST	100
1	-	1	-	3-18032-9	SCR, SET, FLT PNT, M3 X 4.0	11
1	-	1	-	3-18032-3	SCR, SET, FLT PNT, M3 X 20.0	10
2	-	2	-	1-18023-0	SCR, SKT HD CAP M4 X 8.0	9
2	-	2	-	8-18023-3	SCR, SKT HD CAP M4 X 35.0	8
1	-	1	-	22278-9	SPRING, COMPRESSION	7
1	-	1	-	2-2326331-5	TONK, TERMINAL	5
1	-	1	-	2387285-1	GUIDE -	4
1	-	1	-	2387277-1	BLOCK -	3
1	1	1	-	2387221-2	NEST HVM WM -	2
1	1	1	-	2392725-1	INDENTER HVM WM	1
-91	-77	-1	U/M	PART NO	DESCRIPTION	ITEM NO

THIS DRAWING IS A CONTROLLED DOCUMENT.		DWN	C. Witt	13NOV2019	 TE Connectivity
DIMENSIONS:		CHK	C. Witt	13NOV2019	
mm		APVD	G. Stegmayr	13NOV2019	NAME
0 PLC ±		PRODUCT SPEC		DIE SET DIA 6MM T 6MM2	
1 PLC ±		APPLICATION SPEC		-	
2 PLC ±		SIZE		CAGE CODE DRAWING NO	
3 PLC ±		WEIGHT		A1 00779 ©=2359717	
4 PLC ±		CUSTOMER ACCESSIBLE PRODUCTION DRAWING		SCALE 2:1 SHEET 1 OF 1 REV C	
ANGLES ±		RESTRICTED TO		-	
FINISH		-		-	