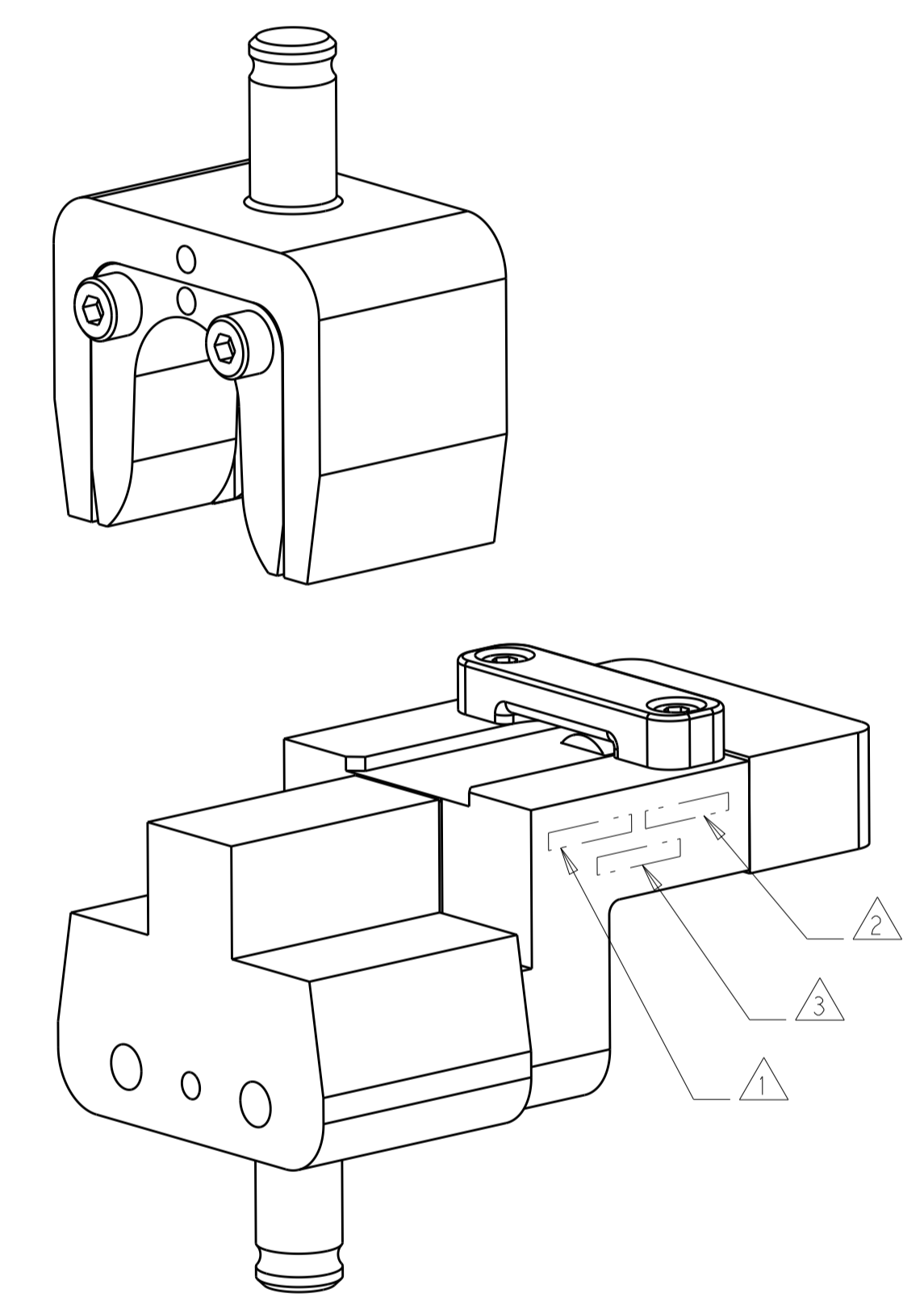
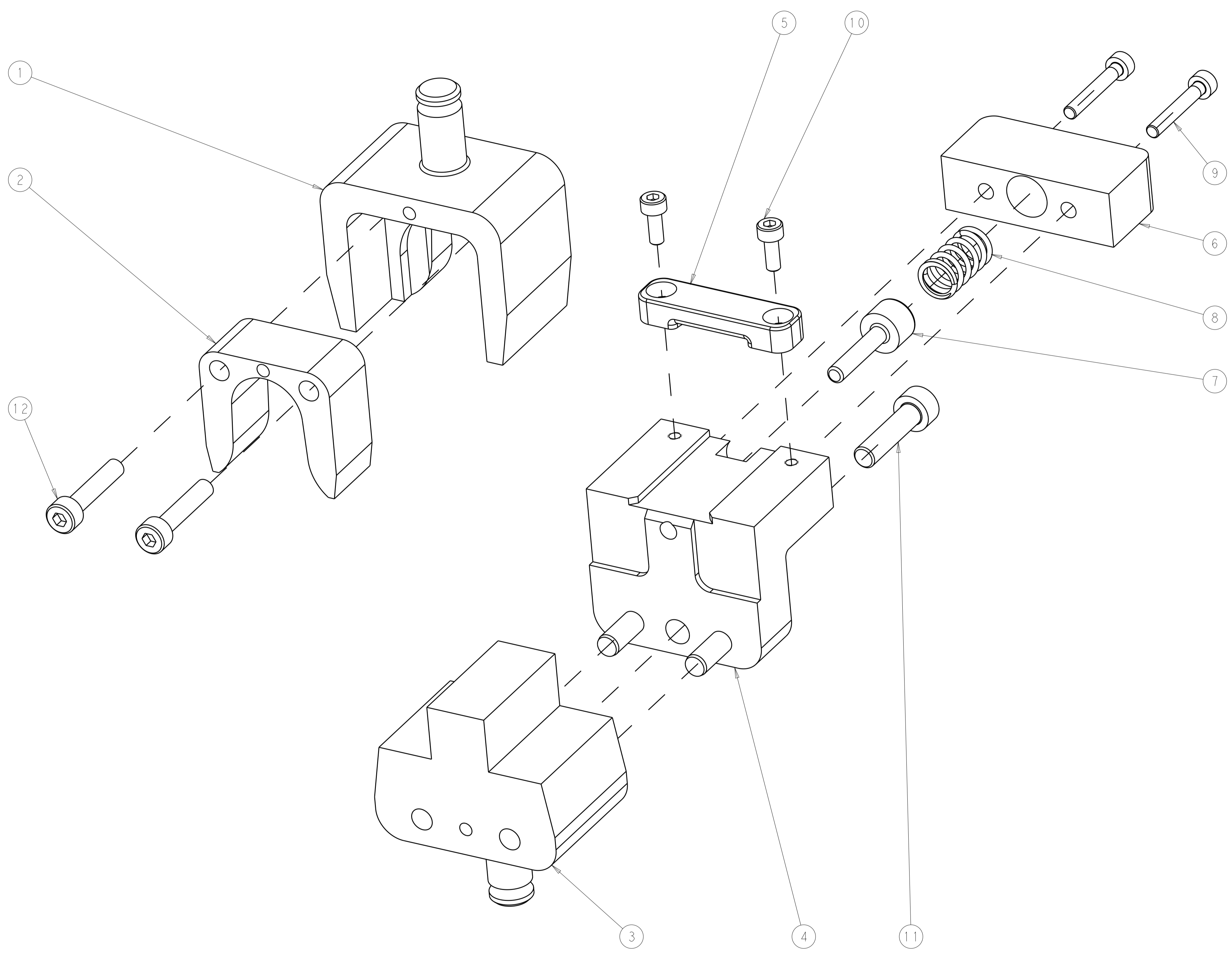


PART NUMBER	REV	FIRST USED	DESCRIPTION
2358752-1	A	-	HV DIE SET
7-2358752-7	A	-	CRIMP TOOLING KIT

REVISIONS				
P	LTN	DESCRIPTION	DATE	APVD
A		RELEASED	15JUL2020	LG TE

TERMINAL NAME	ACTIVE TERMINAL	
TE TERMINAL PART NUMBER(S)	2358839-1	
NON TE TERMINAL PART NUMBER(S)	33277443	
APPLICATION SPECIFICATION	33244451 REV.3	
REFERENCE DRAWING	-	
USED ON	2305470-1	2326378-1
INSTRUCTION SHEET	-	

CABLE SUPPLIER / SPECIFICATION	CABLE SIZE	WIRE CRIMP HEIGHT	INSULATION CRIMP HEIGHT	CRIMP HEIGHT REFERENCE SETTING
-	50mm ²	10.6±0.1	15.1±0.5	C8
-	35mm ²	9.75±0.1	14.25±0.5	E6



-	2	1-18023-4	SCR, SKT HD CAP M4 X 20.0	12	
-	1	2-18023-1	SCR, SKT HD CAP M5 X 20.0	11	
-	2	18023-3	SCR, SKT HD CAP M3 X 8.0	10	
-	2	18023-7	SCR, SKT HD CAP M3 X 20.0	9	
-	1	6-22282-3	SPRING, COMPRESSION	8	
-	1	2305821-3	PIN, EXTRUSION	7	
-	1	2305469-1	RETAINER, SPRING	6	
-	1	2305828-6	SUPPORT, TERMINAL	5	
-	1	2234195-2	LOCATOR, HV TERMINAL	4	
-	1	2358820-3	ANVIL COMBINATION	3	
1	1	2358819-3	INSERT, UPPER INSULATION O	2	
1	1	2358818-3	CRIMPER, UPPER WIRE F	1	
-	77	-1	PART NO	DESCRIPTION	ITEM NO

- △ APPLY "DIE SET PN" PER TEC-115-67-2 IN APPROXIMATE AREA SHOWN.
- △ IDENTIFY PART NUMBER AND REVISION LETTER PER TEC-115-67-2 IN APPROXIMATE AREA SHOWN.
- △ IDENTIFY SERIAL NUMBER PER TEC-115-67-2 IN APPROXIMATE AREA SHOWN.
- 4. TORQUE RECOMMENDATIONS PER 101-35000 UNLESS OTHERWISE SPECIFIED.

THIS DRAWING IS A CONTROLLED DOCUMENT.

TE Connectivity

STE

DIE SET NONTE DELPHI T 35-50mm2

Customer Accessible Production Drawing

SCALE 3:2 SHEET 1 OF 1 REV A