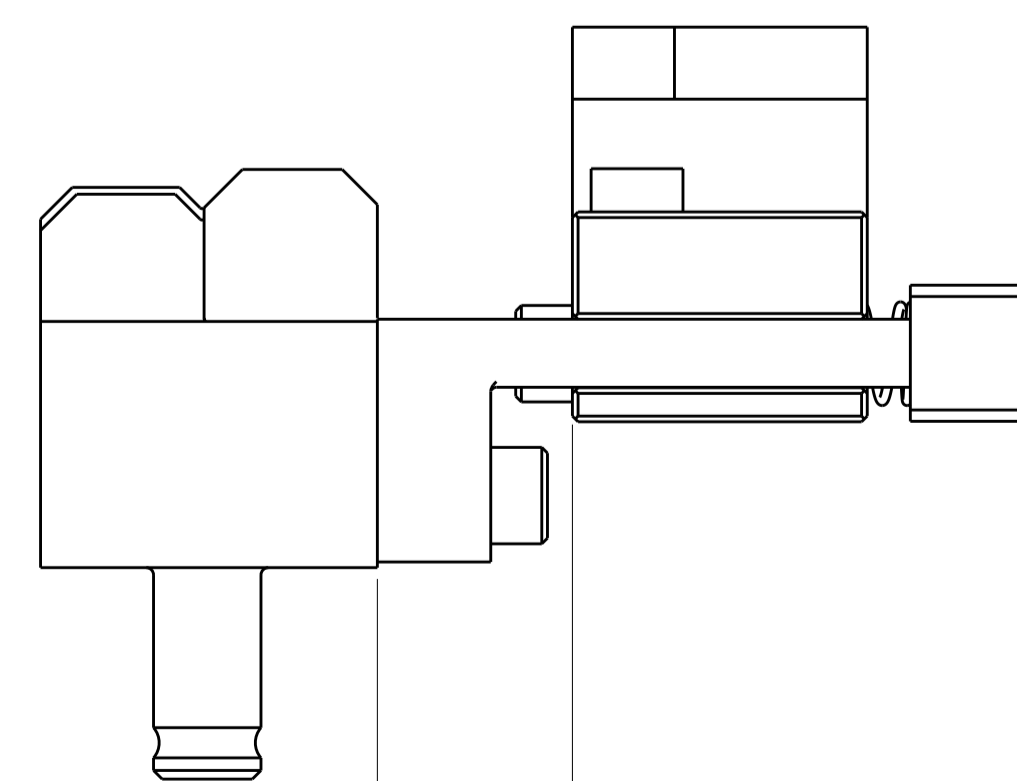
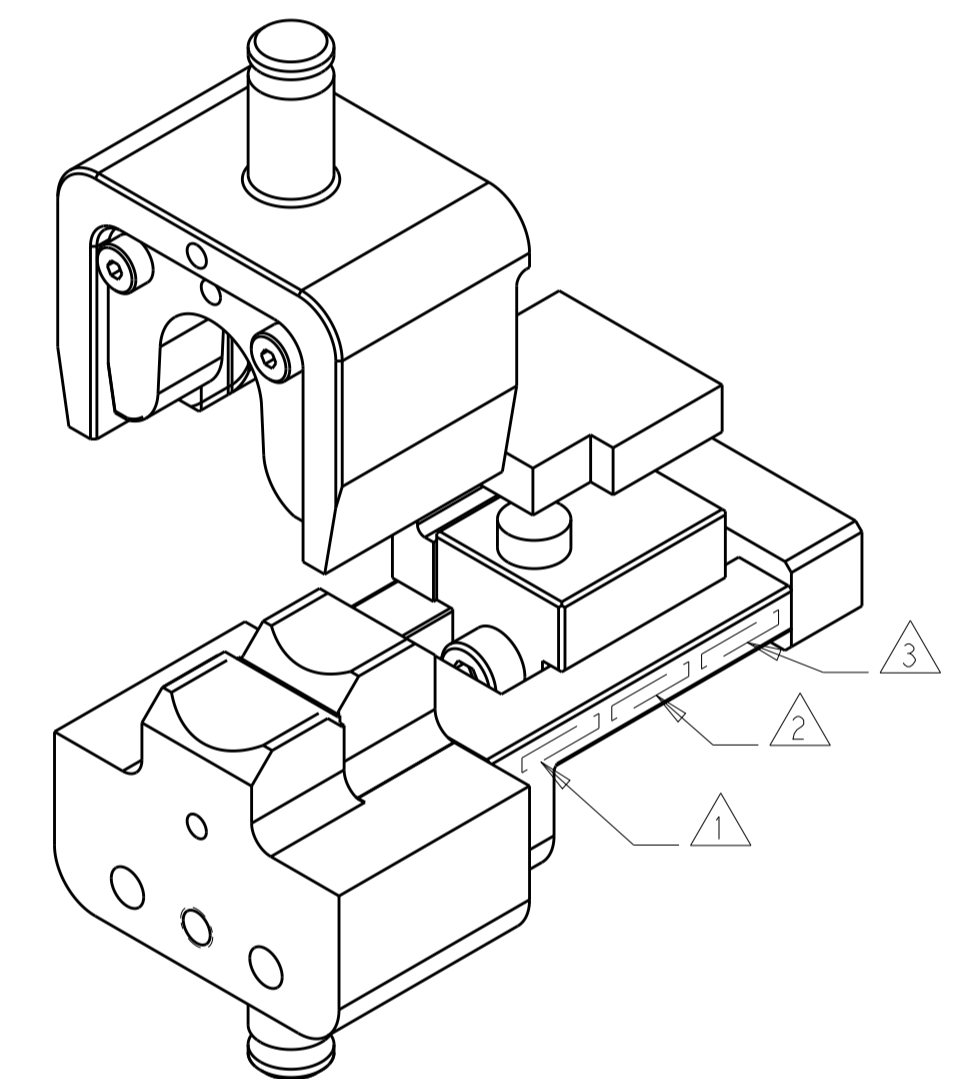
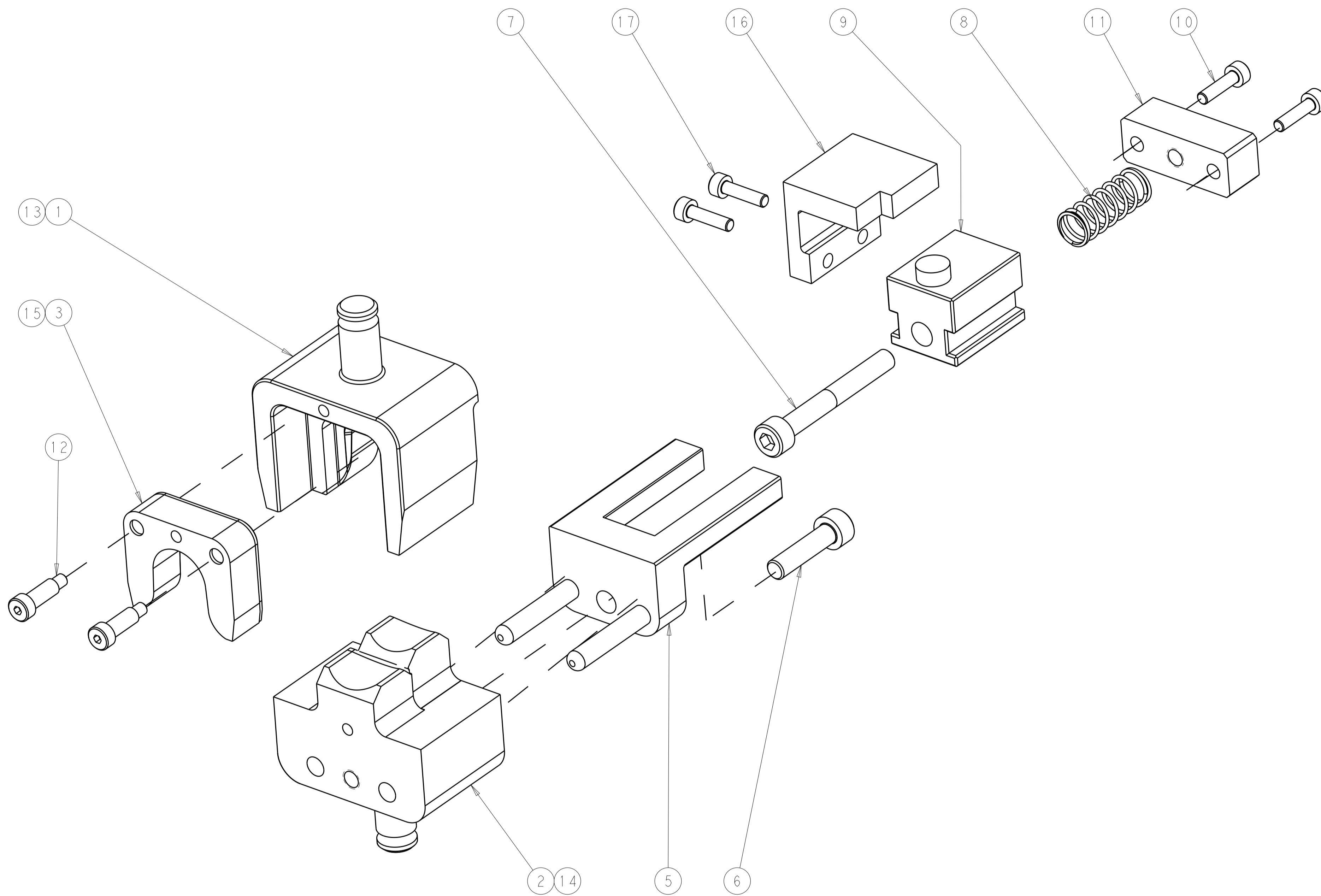


PART NUMBER	REV	FIRST USED	CABLE SIZE	DESCRIPTION
2358716-1	A	-	35mm2	HV DIE SET
2358716-2	A	-	50mm2	HV DIE SET
7-2358716-7	A	-	35mm2	CRIMP TOOLING KIT
7-2358716-8	A	-	50mm2	CRIMP TOOLING KIT

REVISIONS				
P	LTN	DESCRIPTION	DATE	OWN APVD
A		RELEASED	06JUL2020	LG TE

TERMINAL NAME	STAMPED CABLE LUG			
TE TERMINAL PART NUMBER(S)	2358833-1			
NON TE TERMINAL PART NUMBER(S)	383866	383860	383955	383570
APPLICATION SPECIFICATION	FG03988 REV D			
REFERENCE DRAWING	-			
USED ON	2305470-1		2326378-1	
INSTRUCTION SHEET	408-35085			

CABLE SUPPLIER / SPECIFICATION	CABLE SIZE	WIRE CRIMP HEIGHT	INSULATION CRIMP HEIGHT	CRIMP HEIGHT REFERENCE SETTING
G&G / DIN EN 13602	50mm2	10.1±0.2	17.3±0.2	D8
G&G / DIN EN 13602	35mm2	9.7±0.2	15.2±0.2	D5



- △ APPLY "DIE SET PN" PER TEC-115-67-2 IN APPROXIMATE AREA SHOWN.
  - △ IDENTIFY PART NUMBER AND REVISION LETTER PER TEC-115-67-2 IN APPROXIMATE AREA SHOWN.
  - △ IDENTIFY SERIAL NUMBER PER TEC-115-67-2 IN APPROXIMATE AREA SHOWN.
4. TORQUE RECOMMENDATIONS PER 101-35000 UNLESS OTHERWISE SPECIFIED.

-	-	2	2	-	18023-5	SCR, SKT HD CAP M3 X 12.0	17
-	-	1	1	-	2376613-1	STRIPPER BLOCK	16
1	-	1	-	-	2234198-3	INSERT, CRIMPER INS O	15
1	-	1	-	-	2234196-3	ANVIL, COMBINATION	14
1	-	1	-	-	2234197-3	CRIMPER WIRE F	13
-	-	2	2	-	980371-2	SCR, SKT HD SHLDR 4.0 DIA X 10.0	12
-	-	1	1	-	2234150-1	HOUSING, TERMINAL STOP	11
-	-	2	2	-	18023-5	SCR, SKT HD CAP M3 X 12.0	10
-	-	1	1	-	2361396-1	STOP IPT CONTACT	9
-	-	1	1	-	1-22282-8	SPRING, COMPRESSION	8
-	-	1	1	-	2-18023-4	SCR, SKT HD CAP M5 X 40.0	7
-	-	1	1	-	2-18023-1	SCR, SKT HD CAP M5 X 20.0	6
-	-	1	1	-	2234149-1	HOUSING, LOCATOR	5
-	-	-	-	-	-	-	4
-	1	-	1	-	2234198-2	INSERT, CRIMPER INS O	3
-	1	-	1	-	2234196-2	ANVIL, COMBINATION	2
-	1	-	1	-	2234197-2	CRIMPER WIRE F	1
-78	-77	-2	-1	U/M	PART NO	DESCRIPTION	ITEM NO

THIS DRAWING IS A CONTROLLED DOCUMENT.		OWN: H. HUANG 22OCT2019	
DIMENSIONS: mm		CHK: K. HUANG 22OCT2019	
TOLERANCES UNLESS OTHERWISE SPECIFIED:		APVD: Y. YIN 22OCT2019	NAME: DIE SET
0 PLC ±		PRODUCT SPEC	MONTE INTERCABLE T 35-50mm2
1 PLC ±		APPLICATION SPEC	
2 PLC ±		SIZE: CAGE CODE: DRAWING NO	RESTRICTED TO
3 PLC ±		WEIGHT: A100779	Customer Accessible Production Drawing
4 PLC ±		SCALE: 3:2	SHEET 1 OF 1
ANGLES		REV: A	
FINISH			