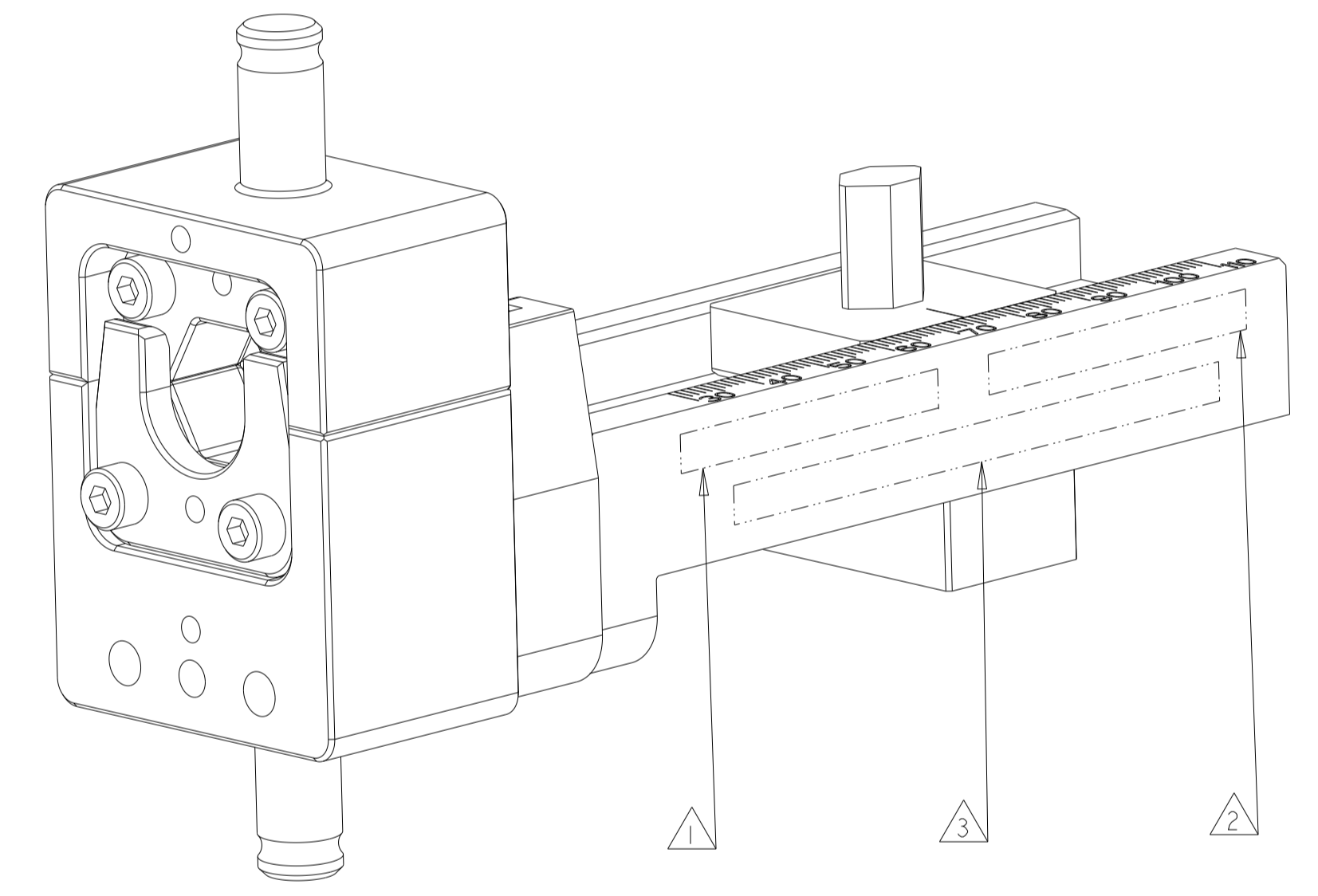
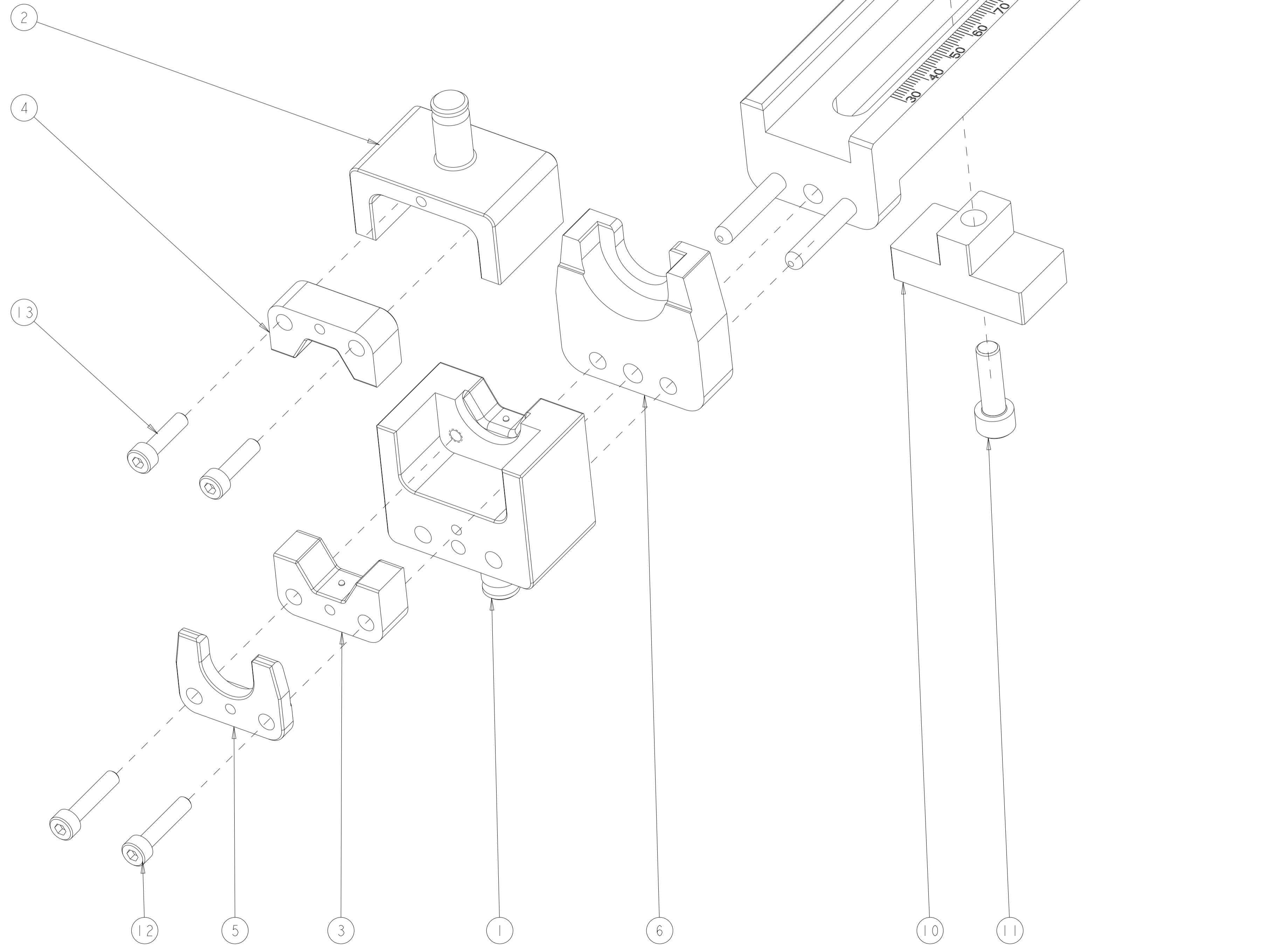


PART NUMBER	REV	DESCRIPTION
2351900-1	A	HV DIE SET
7-2351900-7	A	CRIMP TOOLING KIT
9-2351900-1	A	DIE SET WITH DIE HOLDER

REVISIONS					
P	LTN	DESCRIPTION	DATE	OWN	APVD
B		ECR-21-005653	21MAY2021	LG	TE
B1		REVISED PER ECR-21-006200	10JUN2021	GK	TE
B2		ECR-22-140113	23MAY2022	LS	TE
B3		ECR-23-184981 ADD -3, -4	21AUG2023	RL	YY

FERRULE NAME	SHIELDING SLEEVE	
FERRULE PART NUMBER	2358669-4	2141809-3
APPLICATION SPECIFICATION	114-94133	
REFERENCE DRAWING	114-94131-2	
USED ON	2305470-1	2326378-1
INSTRUCTION SHEET	408-35065	

CABLE SUPPLIER/SPECIFICATION	CABLE SIZE	CRIMP HEIGHT SHIELD	CRIMP WIDTH SHIELD	CRIMP HEIGHT INSULATION	REFERENCE SETTING
COROPLAST 108-94293	50mm <sup>2</sup>	15.3±0.3	17.9 MAX	15.60±0.3	E0



1	-	-	2305470-1	HV DIE HOLDER WITH FINE ADJUST	100
2	2	2	1-18023-3	SCR, SKT HD CAP M4 X 16.0	13
2	2	2	1-18023-4	SCR, SKT HD CAP M4 X 20.0	12
1	-	1	2-18023-9	SCR, SKT HD CAP M6 X 20.0	11
1	-	1	2234137-1	PLATE	10
1	-	1	2234136-1	STOP IPT CONTACT	9
1	-	1	8-18023-4	SCR, SKT HD CAP M5 X 35.0	8
1	-	1	2234134-1	HOLDER	7
1	-	1	2234133-1	LOCATOR, FERRULE	6
1	-	1	2326585-4	STOP, SHIELD	5
1	1	1	2234135-1	INSERT HVM HEX UPPER	4
1	1	1	2326593-4	INSERT, LOWER HV800-90 FERRULE	3
1	1	1	2234132-1	CRIMPER HVM HEX	2
1	1	1	2234131-1	NEST HVM HEX	1
-91	-77	-1	PART NO	DESCRIPTION	ITEM NO

- ⚠️ APPLY "DIE SET PN" PER TEC-115-67-2 IN APPROXIMATE AREA SHOWN.
- ⚠️ IDENTIFY PART NUMBER AND REVISION LETTER PER TEC-115-67-2 IN APPROXIMATE AREA SHOWN.
- ⚠️ IDENTIFY SERIAL NUMBER PER TEC-115-67-2 IN APPROXIMATE AREA SHOWN.
- 4. TORQUE RECOMMENDATIONS PER 101-35000 UNLESS OTHERWISE SPECIFIED.

⚠️ AS AN OPTION:  
ITEM 9 - STOP IPT, CAN BE EXCHANGE BY TCPN 2234136-4 TO USE OTHER RING TONGUE TERMINAL WITH INTERCALE ORDER NO. 1012483. CRIMP SPECIFICATIONS REMAIN IN PLACE. LOCATOR MUST BE ORDER SEPARATLY.

THIS DRAWING IS A CONTROLLED DOCUMENT.

DIMENSIONS:	TOLERANCES UNLESS OTHERWISE SPECIFIED:	OWN: H. HUANG 07MAR2019	CHK: C. KERSTETTER 07MAR2019	APVD: Y. YIN 07MAR2019	NAME: DIE SET IPT-180-1/2/3P F 50MM2
mm	0 PLC ± 1 PLC ± 2 PLC ± 3 PLC ± 4 PLC ± ANGLES ±	MATERIAL: - FINISH: -			SIZE: A   00779   C=2351900
CUSTOMER ACCESSIBLE PRODUCTION DRAWING		SCALE: 1:1	SHEET: 1 OF 4	REV: B3	RESTRICTED TO:

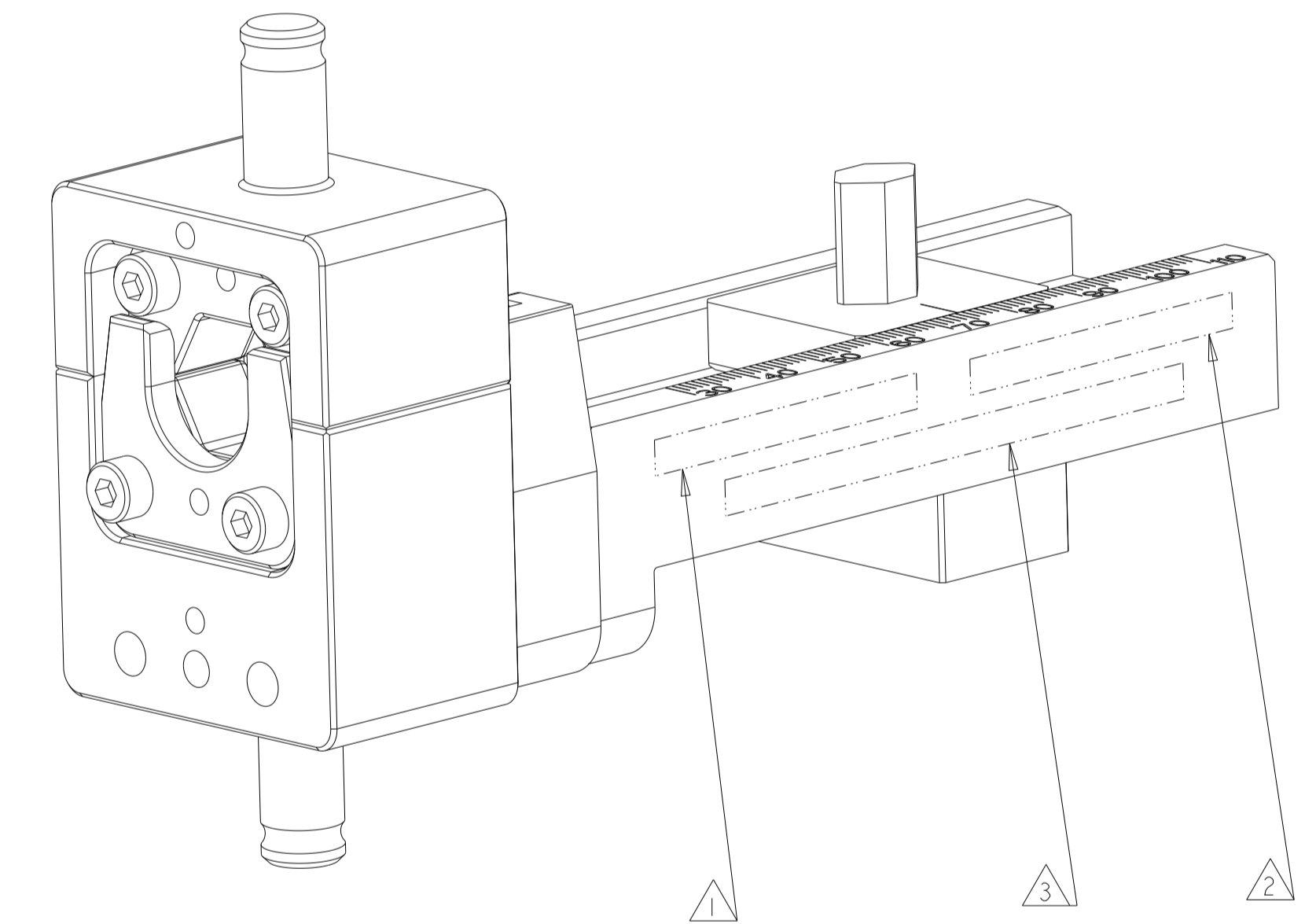
STC TE Connectivity

PART NUMBER	REV	DESCRIPTION
2351900-2	B	HV DIE SET
7-2351900-8	B	CRIMP TOOLING KIT
9-2351900-2	B	DIE SET WITH DIE HOLDER

REVISIONS				
REV	DATE	DESCRIPTION	BY	APPD
-	-	SEE SHEET 1	-	-

FERRULE NAME	SHIELDING SLEEVE	
FERRULE PART NUMBER	2358669-4	2364825-1
APPLICATION SPECIFICATION	114-160062	
REFERENCE DRAWING	114-94131-2	
USED ON	2305470-1	2326378-1
INSTRUCTION SHEET	408-35065	

CABLE SUPPLIER/SPECIFICATION	CABLE SIZE	CRIMP HEIGHT SHIELD	CRIMP WIDTH SHIELD	CRIMP HEIGHT INSULATION	REFERENCE SETTING
COROPLAST 108-94293	50mm <sup>2</sup>	15.3±0.3	17.9 MAX	15.60±0.3	E0



1	-	-	2305470-1	HV DIE HOLDER WITH FINE ADJUST	100
2	2	2	1-18023-3	SCR, SKT HD CAP M4 X 16.0	13
2	2	2	1-18023-4	SCR, SKT HD CAP M4 X 20.0	12
1	-	1	2-18023-9	SCR, SKT HD CAP M6 X 20.0	11
1	-	1	2234137-1	PLATE	10
1	-	1	2234136-1	STOP IPT CONTACT	9
1	-	1	8-18023-4	SCR, SKT HD CAP M5 X 35.0	8
1	-	1	2234134-1	HOLDER	7
1	-	1	2234133-1	LOCATOR, FERRULE	6
1	-	1	2326585-4	STOP, SHIELD	5
1	1	1	2234135-4	INSERT HVM HEX UPPER	4
1	1	1	2326593-9	INSERT, LOWER HV800-90 FERRULE	3
1	1	1	2234132-3	CRIMPER HVM HEX	2
1	1	1	2234131-3	NEST HVM HEX	1
-92	-78	-2	PART NO	DESCRIPTION	ITEM NO

- ① APPLY "DIE SET PN" PER TEC-115-67-2 IN APPROXIMATE AREA SHOWN.
- ② IDENTIFY PART NUMBER AND REVISION LETTER PER TEC-115-67-2 IN APPROXIMATE AREA SHOWN.
- ③ IDENTIFY SERIAL NUMBER PER TEC-115-67-2 IN APPROXIMATE AREA SHOWN.
- 4. TORQUE RECOMMENDATIONS PER 101-35000 UNLESS OTHERWISE SPECIFIED.

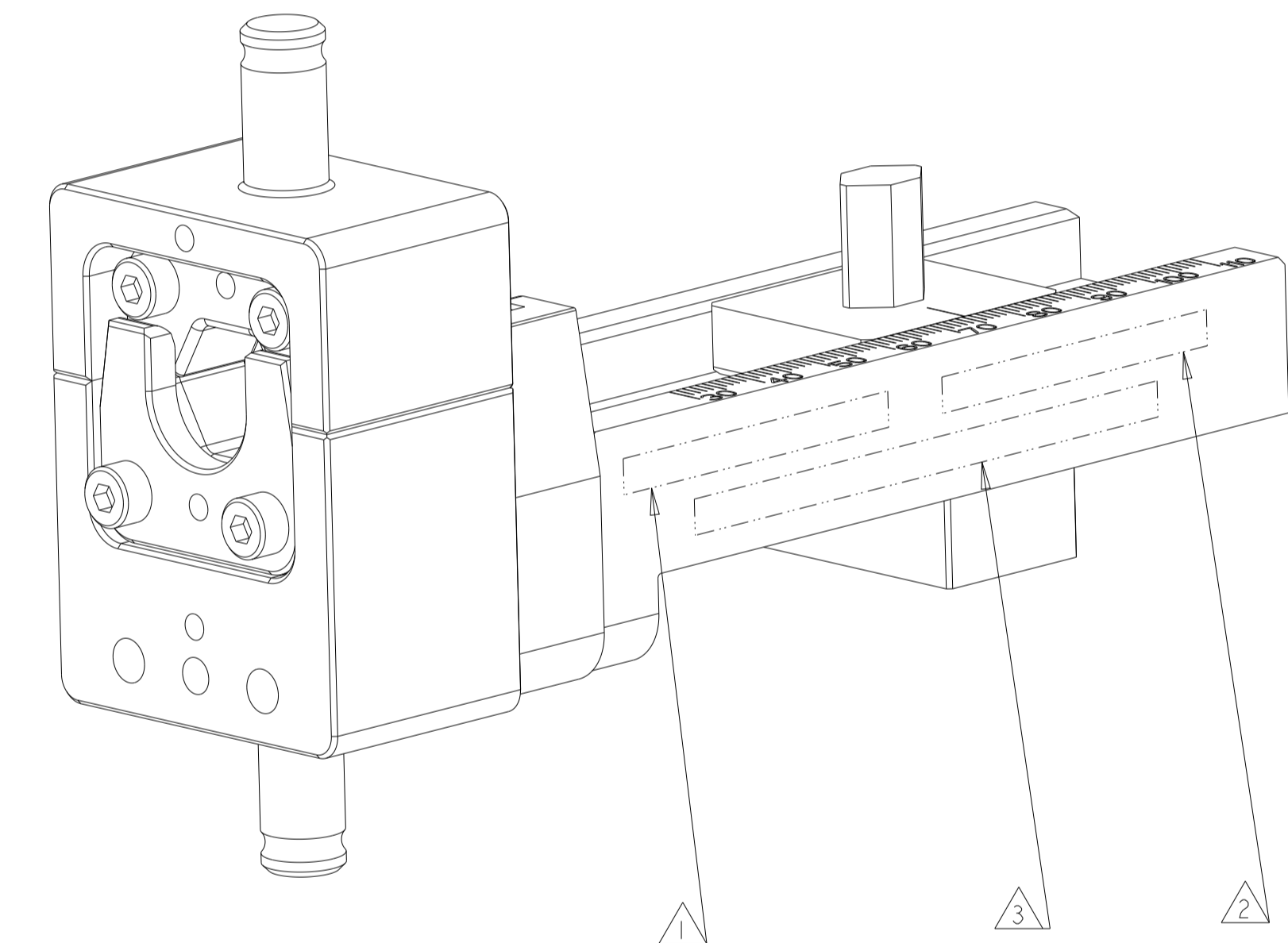
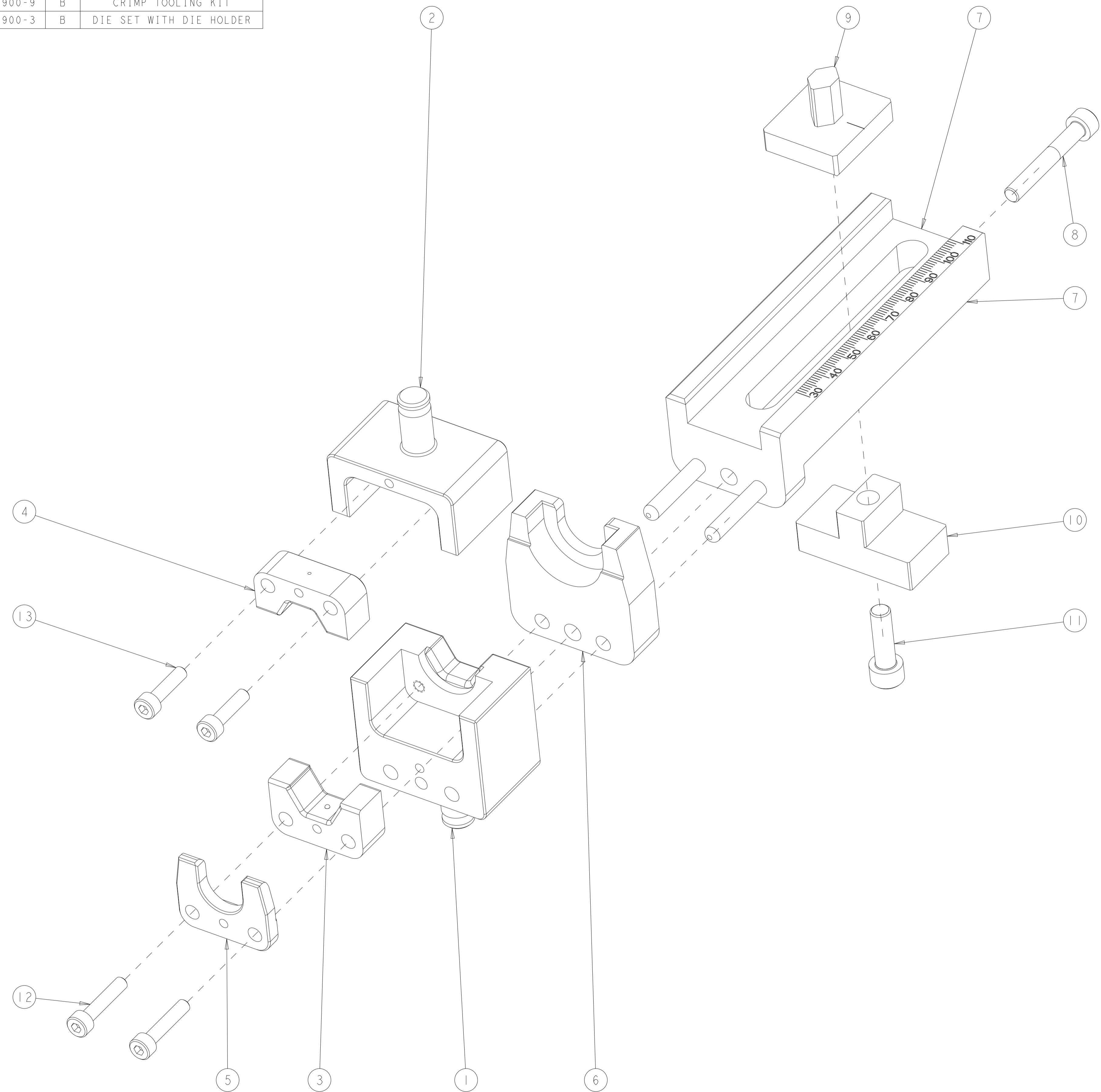
THIS DRAWING IS A CONTROLLED DOCUMENT.		OWN K. HUANG 07MAR2019	NAME DIE SET IPT-180-1/2/3P F 50MM2
DIMENSIONS:		CHK C. KERSTETTER 07MAR2019	PRODUCT SPEC
TOLERANCES UNLESS OTHERWISE SPECIFIED:		APVD Y. YIN 07MAR2019	APPLICATION SPEC
mm	0 PLC ±	SIZE A	RESTRICTED TO
	1 PLC ±	CAGE CODE 00779	SCALE 1:1
	2 PLC ±	DRAWING NO 2351900	SHEET 2 OF 4
	3 PLC ±	WEIGHT	REV B3
	4 PLC ±	CUSTOMER ACCESSIBLE PRODUCTION DRAWING	
ANGLES	FINISH	SCALE	

PART NUMBER	REV	DESCRIPTION
2351900-3	B	HV DIE SET
7-2351900-9	B	CRIMP TOOLING KIT
9-2351900-3	B	DIE SET WITH DIE HOLDER

REVISIONS					
P	LTN	DESCRIPTION	DATE	OWN	APVD
		SEE SHEET 1			

FERRULE NAME	SHIELDING SLEEVE	
FERRULE PART NUMBER	2358669-4	2364825-1
APPLICATION SPECIFICATION	114-160062, 114-160373	
REFERENCE DRAWING		
USED ON	2305470-1	2326378-1
INSTRUCTION SHEET	408-35065	

CABLE SUPPLIER/SPECIFICATION	CABLE SIZE	CRIMP HEIGHT SHIELD	CRIMP WIDTH SHIELD	CRIMP HEIGHT INSULATION	REFERENCE SETTING
SUMITOMO/ISO19642-10	50mm <sup>2</sup>	15.3±0.2	18.0 MAX	15.3±0.2	E0



1	-	-	2305470-1	HV DIE HOLDER WITH FINE ADJUST	100
2	2	2	1-18023-3	SCR, SKT HD CAP M4 X 16.0	13
2	2	2	1-18023-4	SCR, SKT HD CAP M4 X 20.0	12
1	-	1	2-18023-9	SCR, SKT HD CAP M6 X 20.0	11
1	-	1	2234137-1	PLATE	10
1	-	1	2234136-1	STOP IPT CONTACT	9
1	-	1	8-18023-4	SCR, SKT HD CAP M5 X 35.0	8
1	-	1	2234134-1	HOLDER	7
1	-	1	2234133-1	LOCATOR, FERRULE	6
1	-	1	3-2326585-8	STOP, SHIELD	5
1	1	1	2326582-5	INSERT HVM HEX UPPER	4
1	1	1	2406204-3	INSERT HVM HEX LOWER	3
1	1	1	2234132-3	CRIMPER HVM HEX	2
1	1	1	2234131-3	NEST HVM HEX	1
-93	-79	-3	PART NO	DESCRIPTION	ITEM NO

- △ APPLY "DIE SET PN" PER TEC-115-67-2 IN APPROXIMATE AREA SHOWN.
- △ IDENTIFY PART NUMBER AND REVISION LETTER PER TEC-115-67-2 IN APPROXIMATE AREA SHOWN.
- △ IDENTIFY SERIAL NUMBER PER TEC-115-67-2 IN APPROXIMATE AREA SHOWN.
- 4. TORQUE RECOMMENDATIONS PER 101-35000 UNLESS OTHERWISE SPECIFIED.

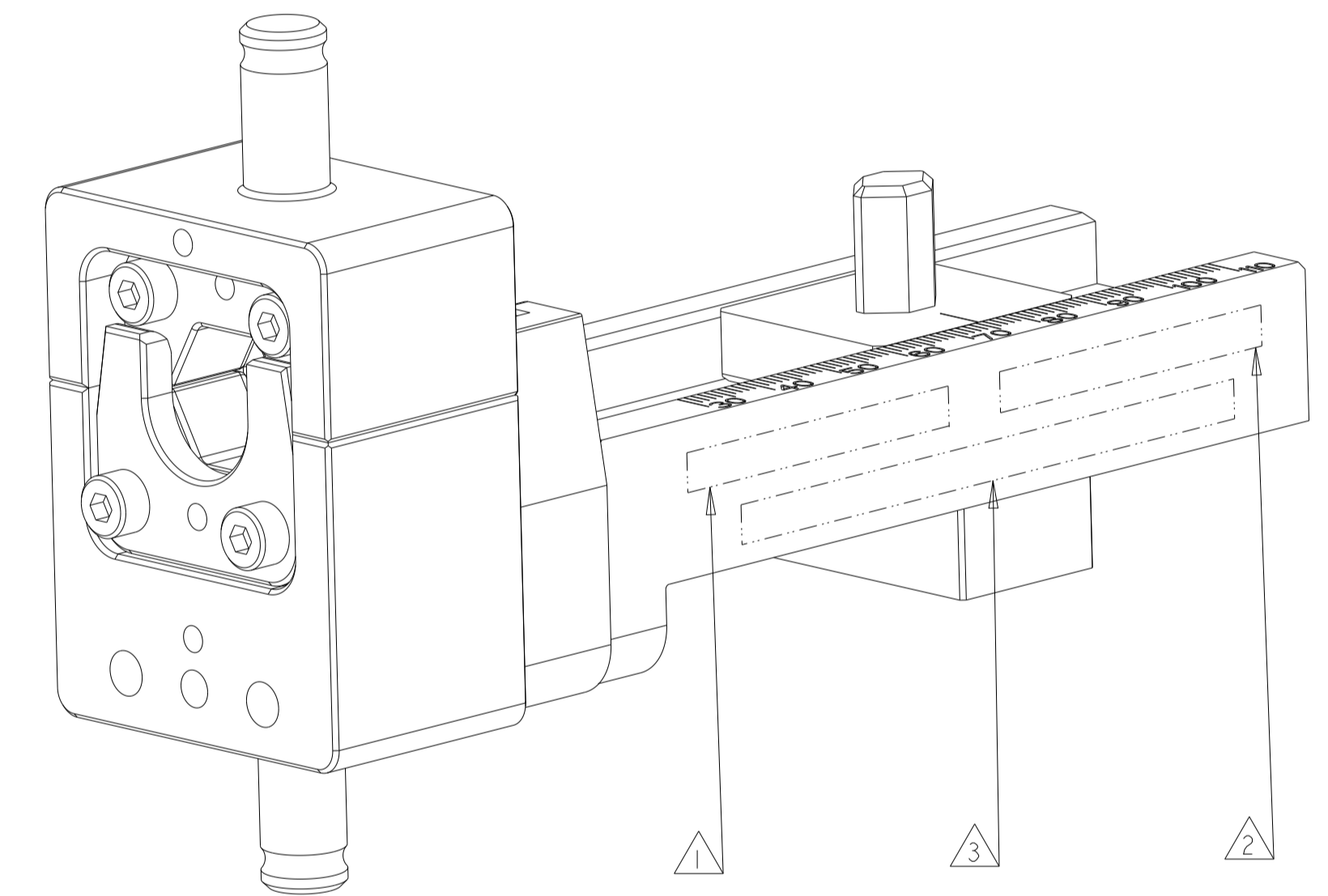
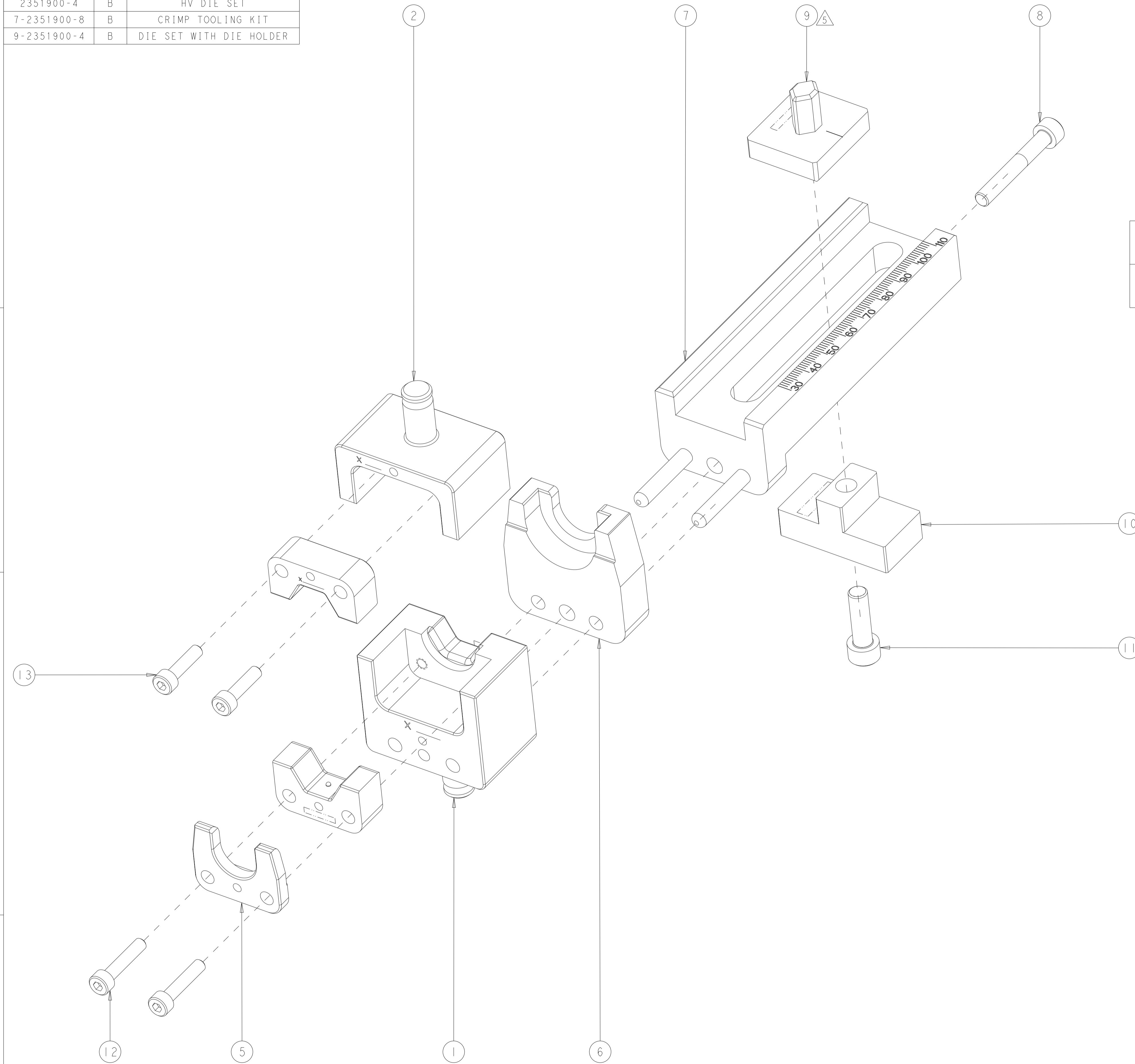
THIS DRAWING IS A CONTROLLED DOCUMENT.		OWN R, LI	06DEC2022	<b>STE</b> TE Connectivity
DIMENSIONS:		CHK Y, TAO	06DEC2022	
TOLERANCES UNLESS OTHERWISE SPECIFIED:		APVD Y, YIN	06DEC2022	
mm		NAME	DIE SET	
0 PLC ±.1		PRODUCT SPEC	IPT-180-1/2/3P F ISO	
1 PLC ±.1		APPLICATION SPEC	50MM2	
2 PLC ±.1		SIZE	CAGE CODE	
3 PLC ±.1		WEIGHT	DRAWING NO	
4 PLC ±.1		CUSTOMER ACCESSIBLE	00779	
ANGLES		PRODUCTION DRAWING	2351900	
FINISH		SCALE	1:1	
MATERIAL		SHEET	3 OF 4	
		REV	B3	

PART NUMBER	REV	DESCRIPTION
2351900-4	B	HV DIE SET
7-2351900-8	B	CRIMP TOOLING KIT
9-2351900-4	B	DIE SET WITH DIE HOLDER

REVISIONS					
P	LTN	DESCRIPTION	DATE	OWN	APVD
		SEE SHEET 1			

FERRULE NAME	SHIELDING SLEEVE	
FERRULE PART NUMBER	2358669-4	2364825-1
APPLICATION SPECIFICATION	114-160062	
REFERENCE DRAWING		
USED ON	2305470-1	2326378-1
INSTRUCTION SHEET	408-35065	

CABLE SUPPLIER/SPECIFICATION	CABLE SIZE	CRIMP HEIGHT SHIELD	CRIMP WIDTH SHIELD	CRIMP HEIGHT INSULATION	REFERENCE SETTING
COROPLAST 108-94293	50mm <sup>2</sup>	15.3±0.3	17.9 MAX	15.60±0.3	D4



1	-	-	-	2305470-1	HV DIE HOLDER WITH FINE ADJUST	100
2	2	2	-	1-18023-3	SCR, SKT HD CAP M4 X 16.0	13
2	2	2	-	1-18023-4	SCR, SKT HD CAP M4 X 20.0	12
1	-	1	-	2-18023-9	SCR, SKT HD CAP M6 X 20.0	11
1	-	1	-	2234137-1	PLATE	10
1	-	1	-	2234136-8	STOP IPT CONTACT	9
1	-	1	-	8-18023-4	SCR, SKT HD CAP M5 X 35.0	8
1	-	1	-	2234134-1	HOLDER	7
1	-	1	-	2234133-1	LOCATOR, FERRULE	6
1	-	1	-	2326585-4	STOP, SHIELD	5
1	1	1	-	2234135-4	INSERT HVM HEX UPPER	4
1	1	1	-	2326593-9	INSERT, LOWER HV800-90 FERRULE	3
1	1	1	-	2234132-3	CRIMPER HVM HEX	2
1	1	1	-	2234131-3	NEST HVM HEX	1
-94	-78	-4	U/M	PART NO	DESCRIPTION	ITEM NO

- △ APPLY "DIE SET PN" PER TEC-115-67-2 IN APPROXIMATE AREA SHOWN.
- △ IDENTIFY PART NUMBER AND REVISION LETTER PER TEC-115-67-2 IN APPROXIMATE AREA SHOWN.
- △ IDENTIFY SERIAL NUMBER PER TEC-115-67-2 IN APPROXIMATE AREA SHOWN.
- 4. TORQUE RECOMMENDATIONS PER 101-35000 UNLESS OTHERWISE SPECIFIED.

△ APPLY TERMINAL P/N:2430850-1.

DIMENSIONS:		TOLERANCES UNLESS OTHERWISE SPECIFIED:		MATERIAL:		FINISH:		WEIGHT:		CUSTOMER ACCESSIBLE PRODUCTION DRAWING	
mm											
0 PLC	±										
1 PLC	±										
2 PLC	±										
3 PLC	±										
4 PLC	±										
ANGLES	±										