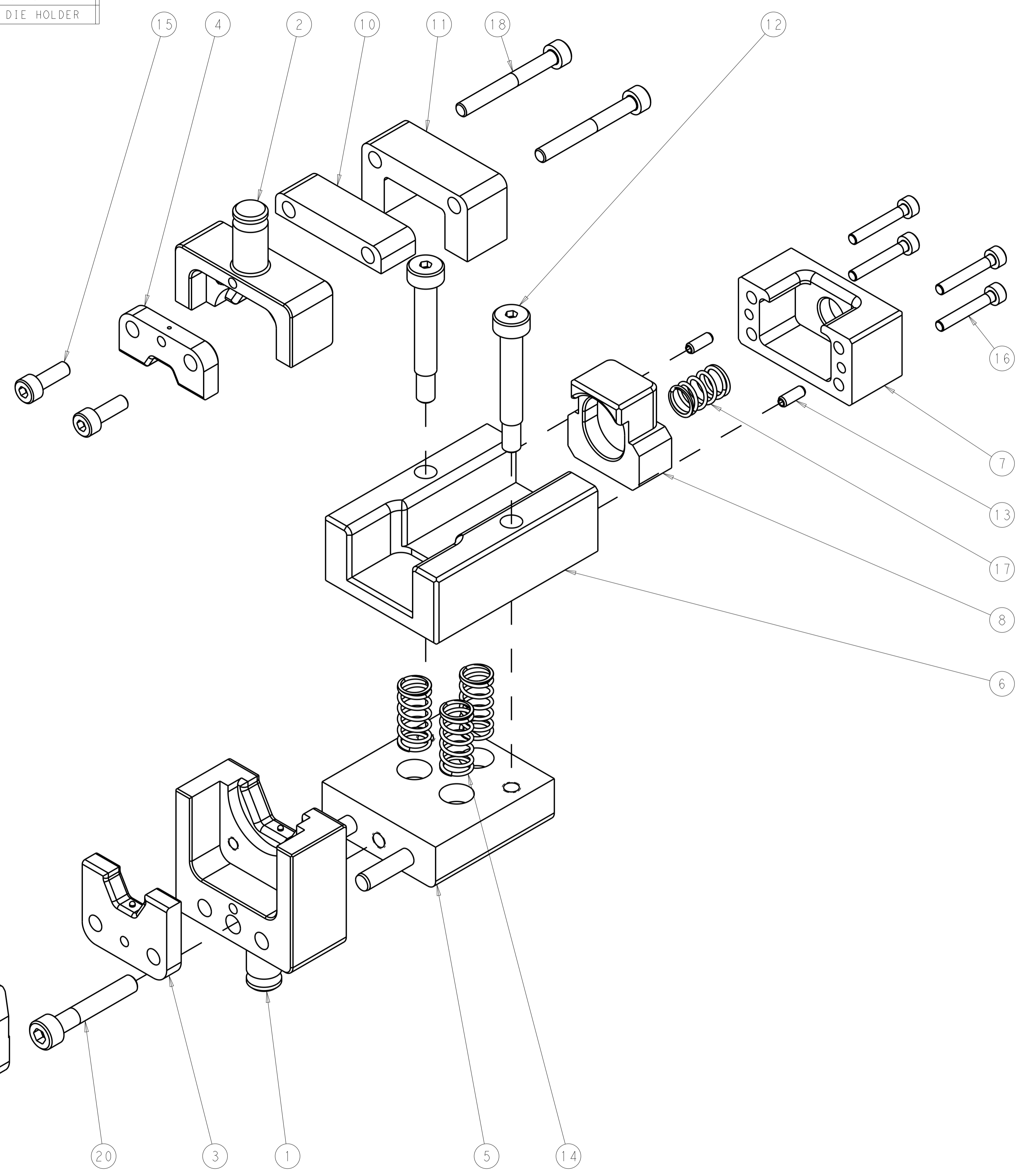


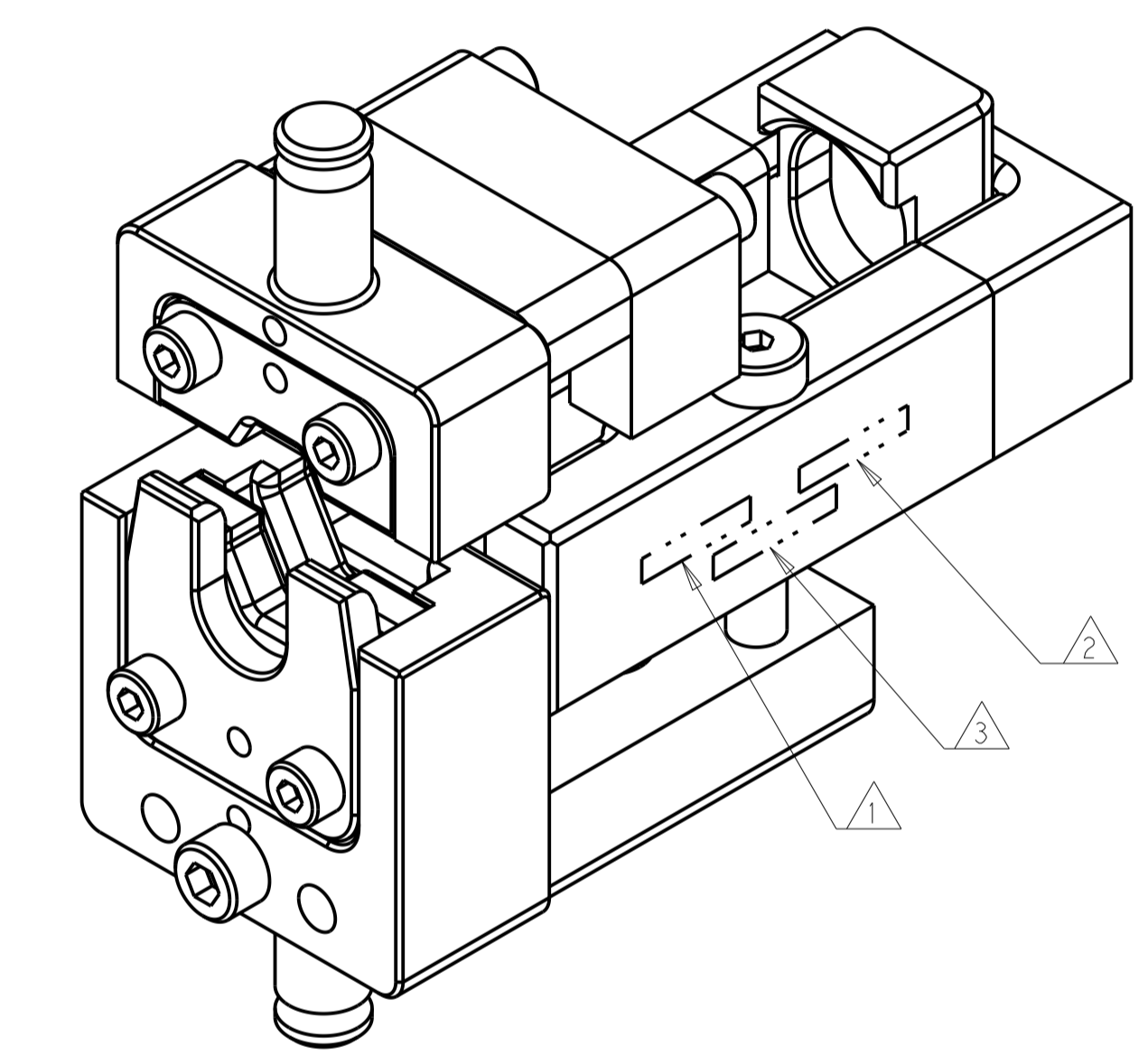
PART NUMBER	REV	DESCRIPTION
2326583-1	A	HV DIE SET
7-2326583-7	A	CRIMP TOOLING KIT
9-2326583-1	A	HV DIE SET WITH DIE HOLDER

REVISIONS				
P. LTR	DESCRIPTION	DATE	OWN	APVD
A	RELEASED	12MAY2021	LG	TE



FERRULE NAME	SHIELD CRIMP FERRULE		
TE FERRULE PART NUMBER(S)	2177090-3	2177061-2	2177060-3
APPLICATION SPECIFICATION	114-94130		
REFERENCE DRAWING	-		
USED ON	2305470-1	2326378-1	-
INSTRUCTION SHEET	408-35057		

CABLE SUPPLIER/SPECIFICATION	CABLE SIZE	SHIELD CRIMP HEIGHT	INSULATION CRIMP HEIGHT	CRIMP HEIGHT REFERENCE SETTING
COROPLAST/LV 216-2	25mm <sup>2</sup>	18.7±0.2	12.1±0.2	D0



1	-	-	2305470-1	HV MODULAR DIE HOLDER WITH FINE ADJUST	100
1	-	1	2-18023-3	SCR, SKT HD CAP M5 X 30.0	20
2	2	2	1-994962-6	SCR, SKT HD CAP M4 X 18.0	19
2	-	2	8-18023-3	SCR, SKT HD CAP M4 X 35.0	18
1	-	1	2-22282-8	SPRING, COMPRESSION	17
4	-	4	18023-7	SCR, SKT HD CAP M3 X 20.0	16
2	2	2	1-18023-2	SCR, SKT HD CAP M4 X 12.0	15
3	-	3	3-22282-1	SPRING, COMPRESSION	14
2	-	2	6-993111-4	PIN, SLOTTED SPRING 3.0 X 8.0	13
2	-	2	993127-9	SCR, SKT HD SHLDR 6.0 DIA X 30.0	12
1	-	1	2234129-7	TERMINAL HOLD DOWN	11
1	-	1	2234194-9	SPACER	10
1	-	1	2326585-1	STOP, SHIELD	9
1	-	1	2326588-1	STOP, TERMINAL	8
1	-	1	2326587-2	HOUSING, TERMINAL STOP	7
1	-	1	2326586-2	HOUSING, LOCATOR	6
1	-	1	2371955-3	BASE, LOCATOR	5
1	1	1	2326582-1	INSERT HVM HEX UPPER	4
1	1	1	2326581-1	INSERT HVM HEX LOWER	3
1	1	1	2361388-6	CRIMPER HVM HEX	2
1	1	1	2380617-1	NEST HVM HEX	1
-91	-77	-1	PART NO	DESCRIPTION	ITEM NO

- △ APPLY "DIE SET PN" PER TEC-115-67-2 IN APPROXIMATE AREA SHOWN.
- △ IDENTIFY PART NUMBER AND REVISION LETTER PER TEC-115-67-2 IN APPROXIMATE AREA SHOWN.
- △ IDENTIFY SERIAL NUMBER PER TEC-115-67-2 IN APPROXIMATE AREA SHOWN.
- 4. TORQUE RECOMMENDATIONS PER 101-35000 UNLESS OTHERWISE SPECIFIED.

THIS DRAWING IS A CONTROLLED DOCUMENT. **TE Connectivity**

DIMENSIONS:	TOLERANCES UNLESS OTHERWISE SPECIFIED:	DATE: 22DEC2020	NAME: DIE SET HVP 800-180
mm	0 PLC ±	CHK: JIANG	F 25MM2
	1 PLC ±	APPV: YIYIN	
	2 PLC ±		
	3 PLC ±		
	4 PLC ±		
	ANGLES ±		
MATERIAL:	FINISH:	WEIGHT:	SIZE: CAGE CODE: DRAWING NO: RESTRICTED TO
			A100779C=2326583
Customer Accessible Production Drawing		SCALE: 3:2	SHEET 1 OF 1 REV A