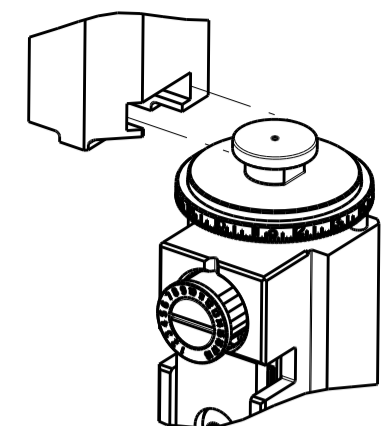


PART NUMBER	REVISION	DESCRIPTION	FEED TYPE
2266989-2	B	FINE CRIMP HEIGHT ADJUST	PNEUMATIC
7-2266989-2	B	PNEUMATIC AND CRIMP TOOLING KIT	PNEUMATIC
7-2266989-7	A	CRIMP TOOLING KIT	-

ATLANTIC VERSION TERMINATOR INTERFACE ADAPTER



APPLICATOR DATA		
CRIMP	SIZE	TYPE
WIRE	2.82 mm [.111]	F
INSUL	3.91 mm [.154]	O

APPLICATOR INSTRUCTIONS 408-35042

TERMINAL DATA: FCI/DeIphi TERMINAL FCI CRIMP SPECIFICATION	
TERMINAL NAME: FCI/DeIphi TERMINAL	
WIRE STRIP LENGTH 4.29-5.05 mm [.169-.199 IN]	TERMINAL INSULATION DIAMETER RANGE Ø 2.8 mm MAX [.110 IN MAX]
TERMINAL APPLICATION SPECIFICATION Female Terminal 2.8 SICMA3-Rev FE CS 09 002	

TE TERMINAL	FCI/DeIphi TERMINAL	TE SEAL	FCI/DeIphi SEAL	SEAL INSULATION DIAMETER RANGE
2113854-1	211CC3S2161	2113214-1	211M0010	2.80 mm MAX

WIRE SIZE	CRIMP HEIGHT mm [INCH]	CRIMP HEIGHT REFERENCE SETTING
2.50mm2	1.77+/-0.04 [.070+/- .002]	6.7
2.00mm2	1.55+/-0.04 [.061+/- .002]	8.7
1.50mm2	1.47+/-0.04 [.058+/- .002]	9.8
1.40mm2	1.42+/-0.04 [.056+/- .002]	10.4
1.25mm2	1.34+/-0.04 [.053+/- .002]	11.2

- RECOMMENDED SPARE PARTS
- REFER TO SUPPLIED INSTRUCTION SHEET FOR CLEANING, LUBRICATION AND STORAGE OF APPLICATOR.
- APPLY PART NUMBER 2-23419-6 LOCTITE TO THREADS OF ITEM 242.
- CRIMP HEIGHT REFERENCE SETTING WAS THE SETTING USED WHEN THE APPLICATOR WAS QUALIFIED AT THE FACTORY. ADJUSTMENT MAY BE NECESSARY WHEN RUNNING APPLICATOR IN THE FIELD.
- APPLY TORQ-SEAL IN ALLEN SOCKET TO FILL HOLE AFTER FLAT HD HAS BEEN ADJUSTED TO CORRECT HEIGHT AT QUALIFICATION. APPLY #1-23419-5 LOC-TITE TO THREADS.
- UNLESS SPECIFIED OTHERWISE TORQUE VALUES SHALL BE USED PER DOCUMENT, 101-35000.
- TERMINAL PITCH NOT COMPATIBLE WITH MECHANICAL FEED.
- THIS CRIMP PARAMETER IS PROVIDED TO MEET A CUSTOM AND UNIQUE CUSTOMER REQUIREMENT. IT HAS BEEN EVALUATED AND IS CONDITIONALLY SPECIFIED BY TE CONNECTIVITY. THIS CUSTOMIZED CRIMP PARAMETER IS NOT LISTED AS AN APPROVED APPLICATION WITHIN THE TERMINAL MANUFACTURER'S SPECIFICATIONS. **TE CONNECTIVITY EXPRESSLY DISCLAIMS ANY AND ALL WARRANTIES THAT THE PRODUCT WILL PERFORM SIMILARLY TO VALIDATED AND APPROVED APPLICATIONS, AS STATED WITHIN THE MANUFACTURER'S APPLICATION SPECIFICATIONS, INCLUDING BUT NOT LIMITED TO IMPLIED WARRANTIES OF MERCHANTABILITY OR FITNESS FOR PARTICULAR PURPOSE.** AS SUCH, IT IS HIGHLY RECOMMENDED THAT THE CUSTOMER PERFORM FURTHER DETAILED EVALUATION TO ASSESS PRODUCT PERFORMANCE IN THE SPECIFIC APPLICATION AND OBTAIN APPROVAL FROM TERMINAL MANUFACTURER FOR THIS CUSTOM REQUIREMENT.

**\*WARNING**  
ON INSTALLATION, SET WIRE DISC TO CRIMP HEIGHT REFERENCE SETTING FOR LARGEST WIRE SIZE. CRIMP HEIGHT REFERENCE SETTINGS GREATER THAN THE VALUE SHOWN MAY CAUSE DAMAGE TO THE CRIMP TOOLING, REFER TO THE INSTRUCTION SHEET FOR PROPER SETUP AND ADJUSTMENTS.

LOC	DIST	REVISIONS					
A	66	P	LTN	DESCRIPTION	DATE	OWN	APVD
		1		DEVELOPMENT	17SEP2015	JH	UG
		A		RELEASED	17NOV2015	JH	GB
		A1		ECR-18-002085	11FEB2018	FZ	KZ
		B		ECR-20-013955	30SEP2020	FZ	GB

-	1	1	2119641-1	FEED CAM, AIR FEED	248
-	1	1	2119082-3	CAM, SNAIL, INSULATION ADJUSTMENT	244
-	1	1	2079764-1	WASHER, WAVE SPRING, CREST-TO-CREST	243
-	1	1	2119083-1	RETAINER, INSULATION DIAL	242
-	1	1	7-18023-7	SCR, SKT HD CAP M3 X 4.0	241
-	1	1	2844940-1	AIR FEED MODULE	238
-	REF	REF	994970-2	COUNTER, MAGNETIC	164
-	1	1	2844908-1	SCREW, LOCKING	99
-	1	1	2844907-1	POST, LOCKING	98
-	1	1	455888-5	SPACER, CRIMPER	82
-	1	1	1803607-3	DOCUMENTATION PACKAGE	71
-	1	1	2119740-1	TAG, IDENTIFICATION	67
-	2	2	2168078-1	SCREW, DRIVE, RH, RoHS, 2 x .188	66
-	1	1	2168083-2	SCR, SKT HD CAP, RoHS, M4 X 8.0	60
-	1	1	5-18022-5	SCR, HEX HD CAP, M4 X 6.0	59
-	1	1	985575-3	SCR, FLT SKT HD CAP M3 X 10.0	57
-	1	1	1338683-8	FEED PAWL	56
-	4	4	2168083-3	SCR, SKT HD CAP, RoHS, M4 X 12.0	54
-	2	2	1-2168083-0	SCR, SKT HD CAP, RoHS, M4 X 10	53
-	1	1	5018030-1	NUT, HEX, REG, RoHS, M3	52
-	1	1	811242-5	BUMPER, HOLD DOWN	51
-	1	1	690753-2	SPACER, TONKER	50
-	1	1	18023-9	SCR, SKT HD CAP M4 X 6.0	49
-	1	1	1803583-9	APPLICATOR BASIC ASSEMBLY, SF	46
-	1	1	1803515-1	RAM ASSEMBLY, SF ATLANTIC	44
-	1	1	1803602-1	SCR, BHSC, RoHS (M8 X 25)	41
-	1	1	1-1752356-8	SUPPORT, TERMINAL	34
-	2	2	2079383-5	SCR, BHSC, RoHS (M4 X 20)	33
-	2	2	2-2844962-8	SPACER, CYLINDRICAL, STRIP GUIDE	30
-	1	1	2844992-2	ASSEMBLY, STRIP GUIDE	29
-	1	1	455888-3	SPACER, CRIMPER	28
-	1	1	1320928-2	STRIP GUIDE	24
-	1	1	2168083-2	SCR, SKT HD CAP, RoHS, M4 X 8.0	21
-	2	2	1-18028-2	WASHER, FLAT, REG M4	20
-	1	1	2119533-1	STRIPPER, SIDE FEED	19
-	1	1	2119806-1	INSERT, SHEAR	13
-	1	1	3-22280-3	SPRING, COMPRESSION	12
-	1	1	1-356885-4	STOP, SHEAR	11
-	1	1	2119805-1	SHEAR HOLDER, FRONT	10
-	1	1	318707-1	FLOATING SHEAR, FRONT	9
-	1	2	1-1803056-6	ANVIL, COMBINATION	8
-	-	-	-	-	7
-	-	-	-	-	6
-	1	1	2-2119781-4	DEPRESSOR, SHEAR	5
-	1	1	238011-4	BLOCK, CRIMPER SPACER	4
-	1	2	1-1803248-6	CRIMPER, INSULATION O PREMIUM	3
-	1	1	455888-7	SPACER, CRIMPER	2
-	1	2	1-1803188-1	CRIMPER, WIRE	1
-	77	72	-2	PART NO	ITEM NO

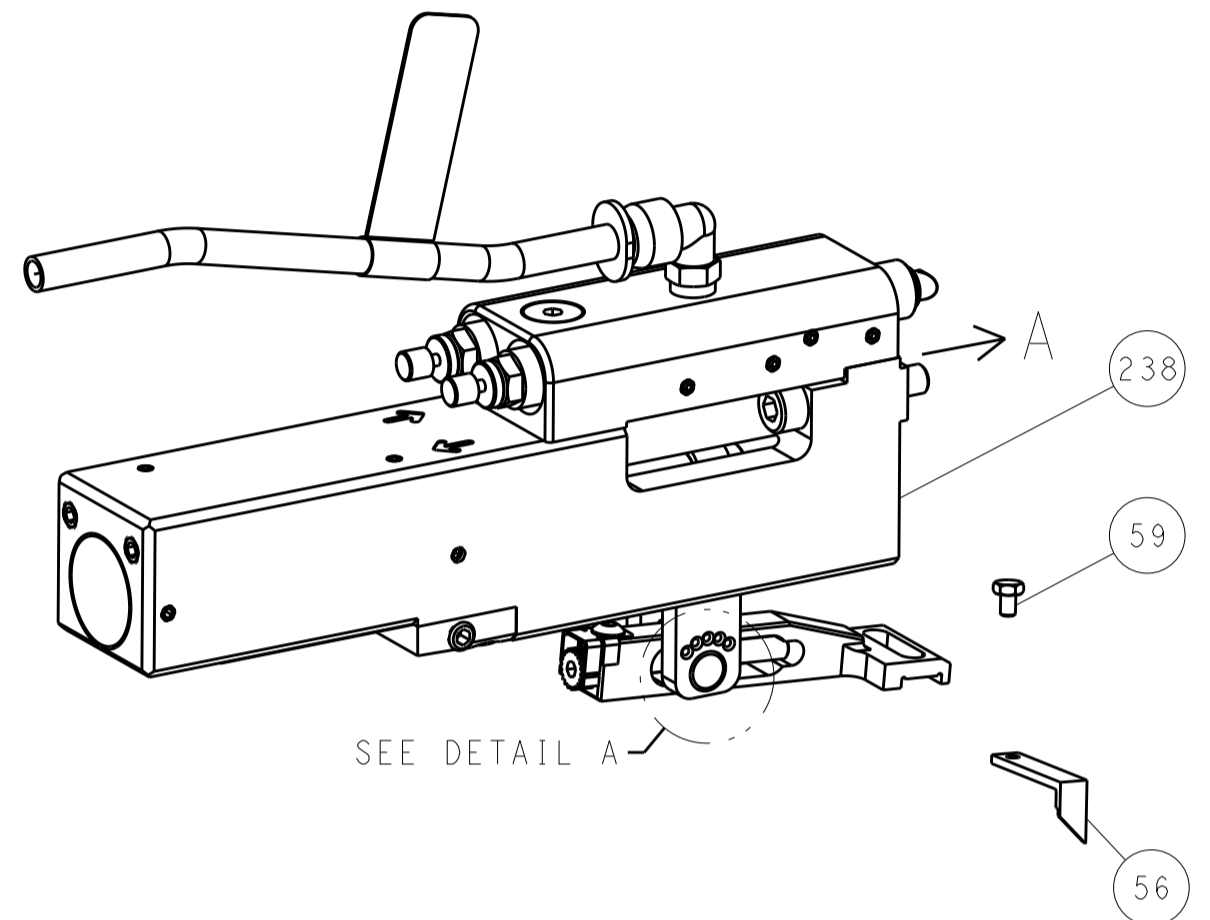
ATLANTIC VERSION  
Shown on sheets 1 of 4 & 2 of 4  
(Pacific version shown on sheets 3 of 4 & 4 of 4)

DIMENSIONS: mm		TOLERANCES UNLESS OTHERWISE SPECIFIED:		DWG: J. HOU 17SEP2015		CHK: L. ZHANG 17SEP2015		APVD: H. GUO 17SEP2015		NAME: Ocean Side Feed Applicator	
0 PLC	±	1 PLC	±	2 PLC	±	3 PLC	±	4 PLC	±	ANGLES	±
MATERIAL		FINISH		WEIGHT		SCALE: 1:2		SHEET 1 OF 4		REV B	

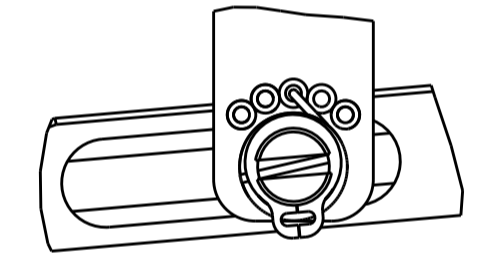
LOC	DIST	REVISIONS					
A	66	P	LTN	DESCRIPTION	DATE	DWN	APVD
		-		SEE SHEET 1	-	-	-

### FEED TYPE

#### PNEUMATIC

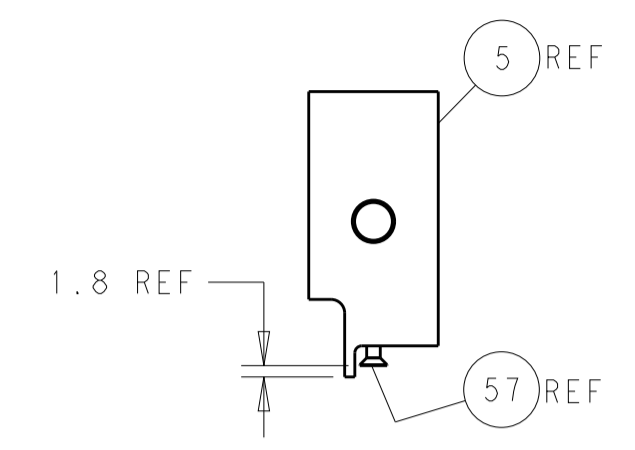
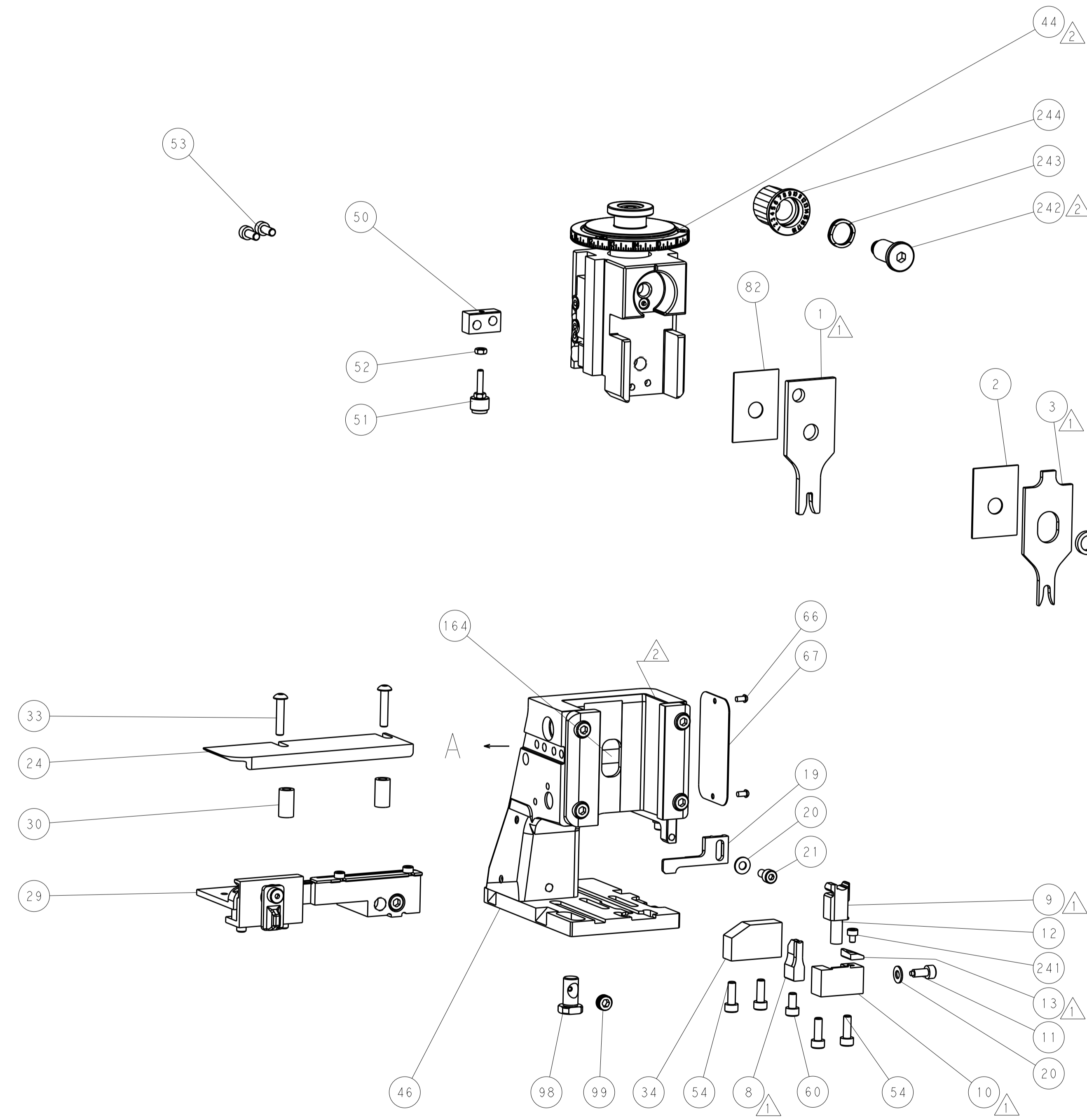
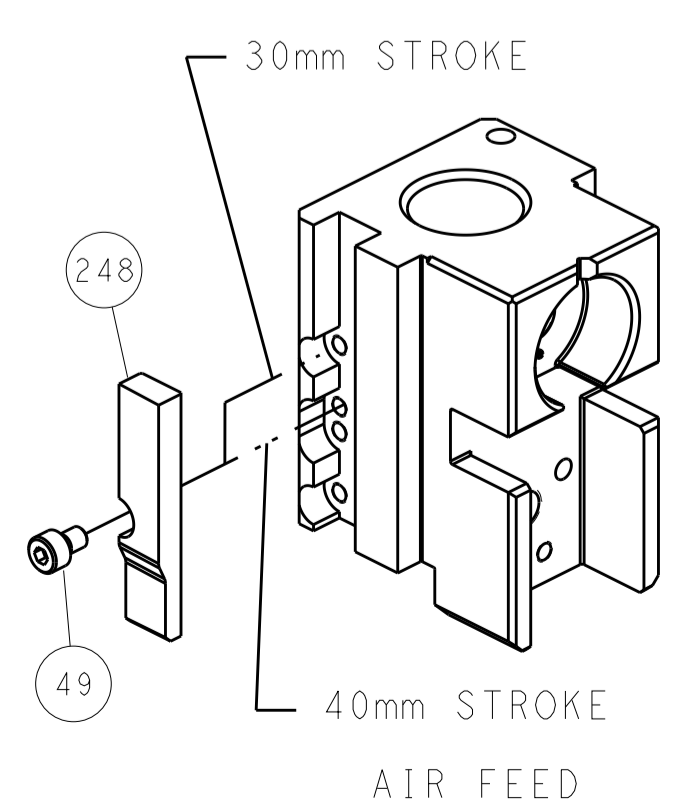


FEED SPRING SETTING POSITION  
(SHOWN FROM REAR SIDE)

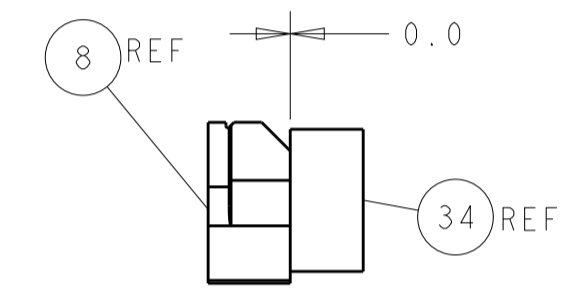


DETAIL A

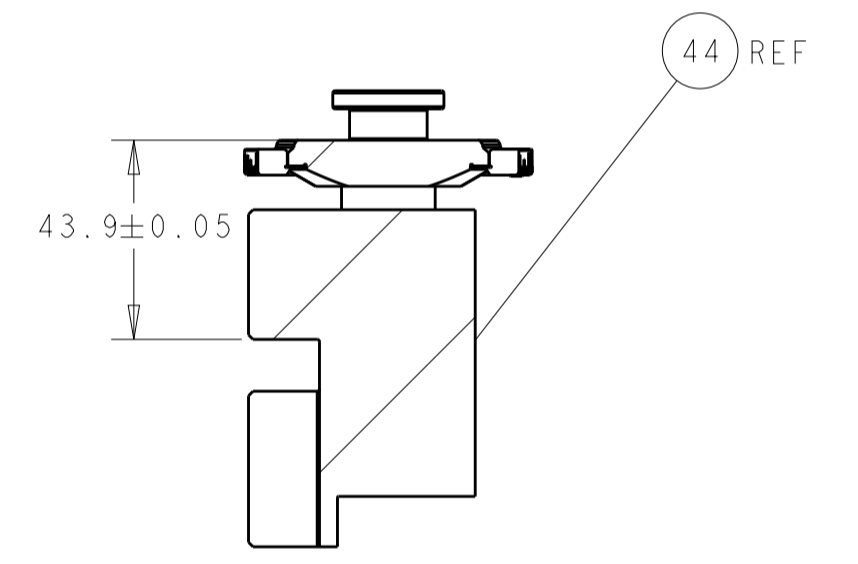
### CAM POSITION



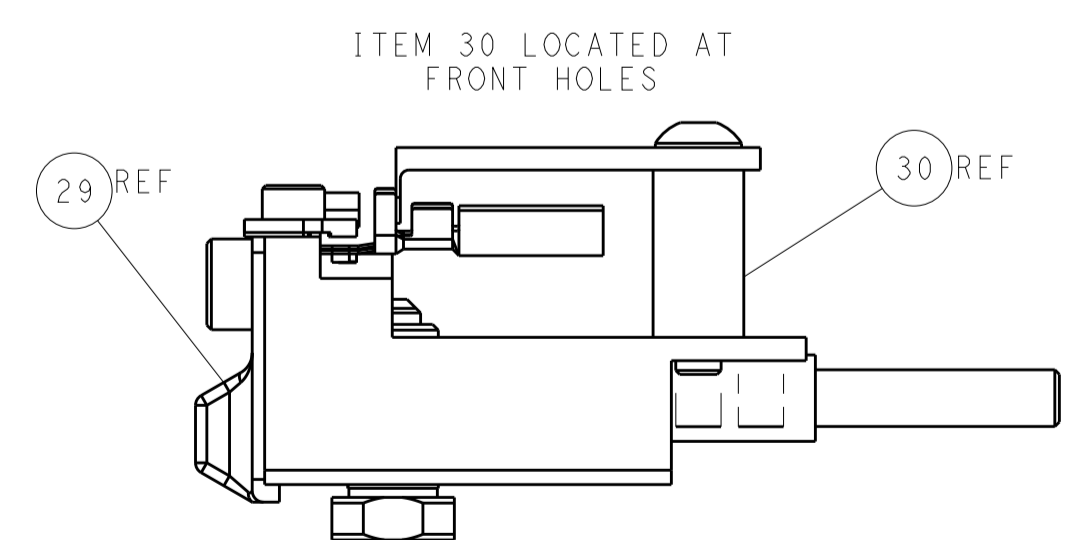
SHEAR DEPRESSOR DETAIL



TERMINAL SUPPORT LOCATION



RAM SET-UP



FEED TRACK POSITION  
GUIDE BY INSULATION BARREL

**ATLANTIC VERSION**  
 Shown on sheets 1 of 4 & 2 of 4  
 (Pacific version shown on sheets 3 of 4 & 4 of 4)

<small>THE INFORMATION CONTAINED HEREIN IS UNCLASSIFIED EXCEPT WHERE SHOWN OTHERWISE. IT IS SUBJECT TO CHANGE WITHOUT NOTICE AND WITHOUT OBLIGATION. SHOULD BE CONTACTED FOR THE LATEST VERSION.</small>		DWN: J. HOU 17SEP2015 CHK: L. ZHANG 17SEP2015 APVD: H. GUO 17SEP2015	TE Connectivity Harrisburg, PA 17105-3608
DIMENSIONS: mm TOLERANCES UNLESS OTHERWISE SPECIFIED: 0 PLC ± 1 PLC ± 2 PLC ± 3 PLC ± 4 PLC ± ANGLES ±		NAME: Ocean Side Feed Applicator PRODUCT SPEC: APPLICATION SPEC: SIZE: A1 CAGE CODE: 00779 DRAWING NO: 2266989	RESTRICTED TO:
MATERIAL:		WEIGHT:	SCALE: 1:2 SHEET: 2 of 4 REV: B

THIS DRAWING IS UNPUBLISHED.	RELEASED FOR PUBLICATION		
COPYRIGHT 20 BY TYCO ELECTRONICS CORPORATION. ALL RIGHTS RESERVED.			
PART NUMBER	REVISION	DESCRIPTION	FEED TYPE
2-2266989-2	B	FINE CRIMP HEIGHT ADJUST	PNEUMATIC
7-2266989-7	A	CRIMP TOOLING KIT	-

PACIFIC VERSION TERMINATOR  
INTERFACE ADAPTER



APPLICATOR DATA		
CRIMP	SIZE	TYPE
WIRE	2.82 mm [.111]	F
INSUL	3.91 mm [.154]	O
APPLICATOR INSTRUCTIONS 408-35042		

TERMINAL DATA: FCI/DeIphi TERMINAL FCI CRIMP SPECIFICATION  
TERMINAL NAME: FCI/DeIphi TERMINAL

WIRE STRIP LENGTH	TERMINAL INSULATION DIAMETER RANGE
4.29-5.05 mm [1.69-.199 IN]	Ø 2.8 mm MAX [.110 IN MAX]

TERMINAL APPLICATION SPECIFICATION Female Terminal 2.8 SICMA3-Rev FE CS 09 002

TE TERMINAL	FCI/DeIphi TERMINAL	TE SEAL	FCI/DeIphi SEAL	SEAL INSULATION DIAMETER RANGE
2113854-1	211CC3S2161	2113214-1	211M0010	2.80 mm MAX

WIRE SIZE	CRIMP HEIGHT mm [INCH]	CRIMP HEIGHT REFERENCE SETTING
2.50mm2	1.77+/-0.04 [.070+/-0.002]	6.7
2.00mm2	1.55+/-0.04 [.061+/-0.002]	8.7
1.50mm2	1.47+/-0.04 [.058+/-0.002]	9.8
1.40mm2	1.42+/-0.04 [.056+/-0.002]	10.4
1.25mm2	1.34+/-0.04 [.053+/-0.002]	11.2

- 1 RECOMMENDED SPARE PARTS
- 2 REFER TO SUPPLIED INSTRUCTION SHEET FOR CLEANING, LUBRICATION AND STORAGE OF APPLICATOR.
- 3 APPLY PART NUMBER 2-23419-6 LOCTITE TO THREADS OF ITEM 242.
- 4 CRIMP HEIGHT REFERENCE SETTING WAS THE SETTING USED WHEN THE APPLICATOR WAS QUALIFIED AT THE FACTORY. ADJUSTMENT MAY BE NECESSARY WHEN RUNNING APPLICATOR IN THE FIELD.
- 5 APPLY TORO-SEAL IN ALLEN SOCKET TO FILL HOLE AFTER FLAT HD HAS BEEN ADJUSTED TO CORRECT HEIGHT AT QUALIFICATION. APPLY #1-23419-5 LOC-TITE TO THREADS.
- 6. UNLESS SPECIFIED OTHERWISE TORQUE VALUES SHALL BE USED PER DOCUMENT, 101-35000.
- 7 TERMINAL PITCH NOT COMPATIBLE WITH MECHANICAL FEED.
- 8 THIS CRIMP PARAMETER IS PROVIDED TO MEET A CUSTOM AND UNIQUE CUSTOMER REQUIREMENT. IT HAS BEEN EVALUATED AND IS CONDITIONALLY SPECIFIED BY TE CONNECTIVITY. THIS CUSTOMIZED CRIMP PARAMETER IS NOT LISTED AS AN APPROVED APPLICATION WITHIN THE TERMINAL MANUFACTURER'S SPECIFICATIONS. **TE CONNECTIVITY EXPRESSLY DISCLAIMS ANY AND ALL WARRANTIES THAT THE PRODUCT WILL PERFORM SIMILARLY TO VALIDATED AND APPROVED APPLICATIONS, AS STATED WITHIN THE MANUFACTURER'S APPLICATION SPECIFICATIONS, INCLUDING BUT NOT LIMITED TO IMPLIED WARRANTIES OF MERCHANTABILITY OR FITNESS FOR PARTICULAR PURPOSE.** AS SUCH, IT IS HIGHLY RECOMMENDED THAT THE CUSTOMER PERFORM FURTHER DETAILED EVALUATION TO ASSESS PRODUCT PERFORMANCE IN THE SPECIFIC APPLICATION AND OBTAIN APPROVAL FROM TERMINAL MANUFACTURER FOR THIS CUSTOM REQUIREMENT.

**\*WARNING**  
ON INSTALLATION, SET WIRE DISC TO CRIMP HEIGHT REFERENCE SETTING FOR LARGEST WIRE SIZE. CRIMP HEIGHT REFERENCE SETTINGS GREATER THAN THE VALUE SHOWN MAY CAUSE DAMAGE TO THE CRIMP TOOLING, REFER TO THE INSTRUCTION SHEET FOR PROPER SETUP AND ADJUSTMENTS.

LOC	DIST	REV	DATE	BY	APPD
A	66	-	-	-	-

REV	DATE	BY	APPD	DESCRIPTION	DATE	BY	APPD
-	1	2119082-3		CAM, SNAIL, INSULATION ADJUSTMENT			244
-	1	2079764-1		WASHER, WAVE SPRING, CREST-TO-CREST			243
-	1	2119083-1		RETAINER, INSULATION DIAL			242
-	1	7-18023-7		SCR, SKT HD CAP M3 X 4.0			241
-	1	2844940-1		AIR FEED MODULE			238
-	REF	994970-2		COUNTER, MAGNETIC			164
-	1	2119641-2		FEED CAM, AIR FEED			151
-	1	2168083-8		SCR, SKT HD CAP, RoHS, M4 X 16			144
-	4	2168083-9		SCR, SKT HD CAP, RoHS, M4 X 20			143
-	1	1-1803583-0		APPLICATOR BASIC ASSEMBLY, SF			141
-	1	1803516-1		RAM ASSEMBLY, SF PACIFIC			140
-	1	2844908-1		SCREW, LOCKING			99
-	1	2844907-1		POST, LOCKING			98
-	1	455888-5		SPACER, CRIMPER			82
-	1	1803607-3		DOCUMENTATION PACKAGE			71
-	1	2119740-1		TAG IDENTIFICATION			67
-	2	2168078-1		SCREW, DRIVE, RH, RoHS, 2 x .188			66
-	1	5-18022-5		SCR, HEX HD CAP, M4 X 6.0			59
-	1	985575-3		SCR, FLT SKT HD CAP M3 X 10.0			57
-	1	1338683-8		FEED PAWL			56
-	2	1-2168083-0		SCR, SKT HD CAP, RoHS, M4 X 10			53
-	1	5018030-1		NUT, HEX, REG, RoHS, M3			52
-	1	811242-5		BUMPER, HOLD DOWN			51
-	1	690753-2		SPACER, TONKER			50
-	1	18023-9		SCR, SKT HD CAP M4 X 6.0			49
-	1	1803602-1		SCR, BHSC, RoHS (M8 X 25)			41
-	1	1-1752356-8		SUPPORT, TERMINAL			34
-	2	2079383-5		SCR, BHSC, RoHS (M4 X 20)			33
-	2	2-2844962-8		SPACER, CYLINDRICAL, STRIP GUIDE			30
-	1	2844992-2		ASSEMBLY, STRIP GUIDE			29
-	1	455888-3		SPACER, CRIMPER			28
-	1	1320928-2		STRIP GUIDE			24
-	1	2168083-2		SCR, SKT HD CAP, RoHS, M4 X 8.0			21
-	2	1-18028-2		WASHER, FLAT, REG M4			20
-	1	2119533-1		STRIPPER, SIDE FEED			19
-	1	2119806-1		INSERT, SHEAR			13
-	1	3-22280-3		SPRING, COMPRESSION			12
-	1	1-356885-4		STOP, SHEAR			11
-	1	2119805-1		SHEAR HOLDER, FRONT			10
-	1	318707-1		FLOATING SHEAR, FRONT			9
-	1	6-1803056-6		ANVIL, COMBINATION			8
-	-	-		-			7
-	-	-		-			6
-	1	2-2119781-4		DEPRESSOR, SHEAR			5
-	1	238011-4		BLOCK, CRIMPER SPACER			4
-	1	1-1803248-6		CRIMPER, INSULATION O PREMIUM			3
-	1	455888-7		SPACER, CRIMPER			2
-	1	1-1803188-1		CRIMPER, WIRE			1

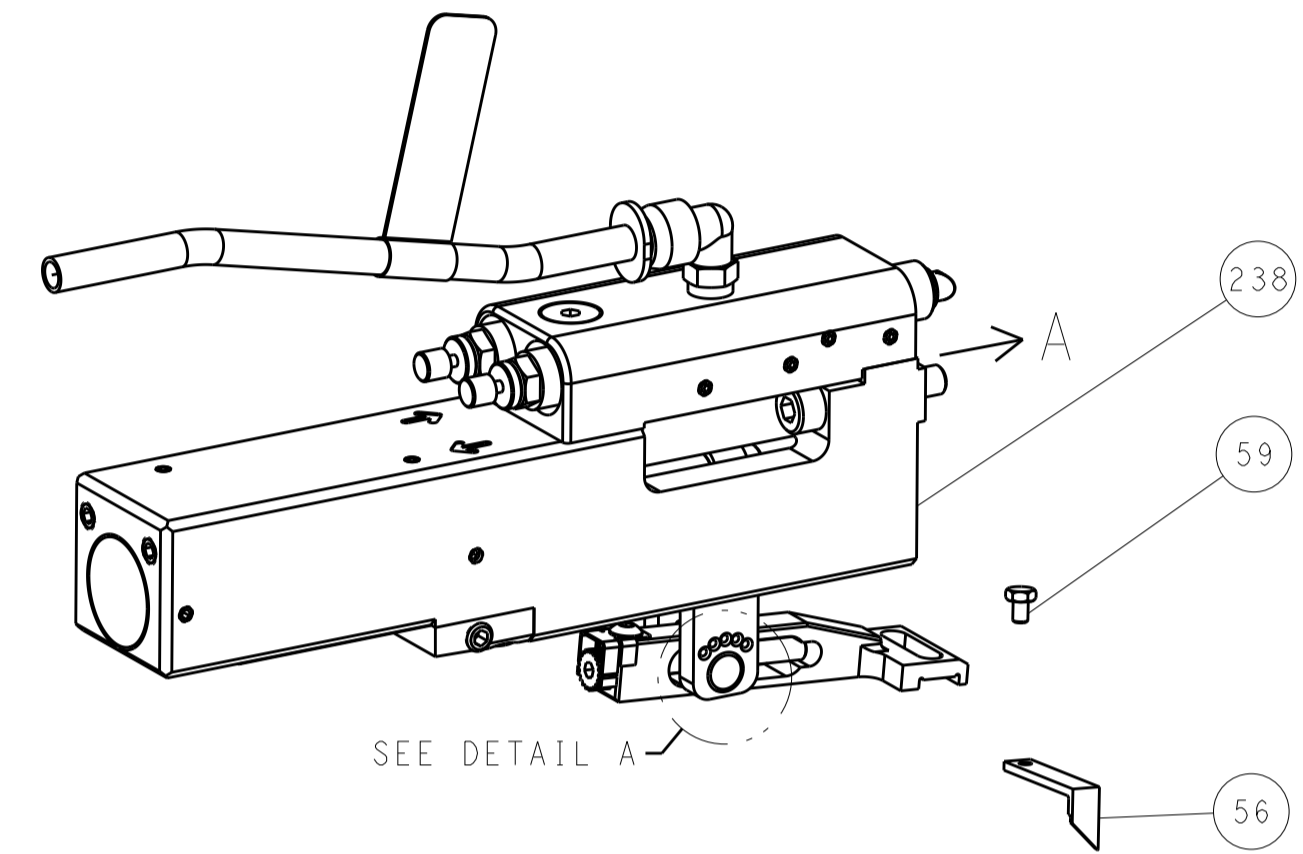
PACIFIC VERSION  
Shown on sheets 3 of 4 & 4 of 4  
(Atlantic version shown on sheets 1 of 4 & 2 of 4)

DIMENSIONS: mm		TOLERANCES UNLESS OTHERWISE SPECIFIED:		DWG: J. HOU 17SEP2015		CHK: L. ZHANG 17SEP2015		APVD: H. GUO 17SEP2015		NAME: Ocean Side Feed Applicator	
0 PLC ±		1 PLC ±		2 PLC ±		3 PLC ±		4 PLC ±		SIZE: A1	
ANGLES		FINISH		WEIGHT		SCALE: 1:2		SHEET: 3 OF 4		REV: B	

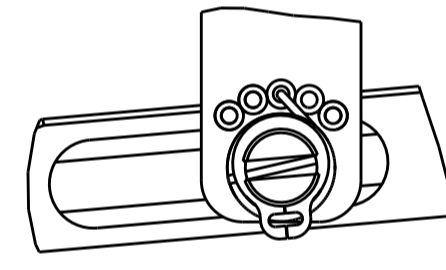
LOC		DIST		REVISIONS			
A	66	P	LTM	DESCRIPTION	DATE	OWN	APVD
		-	-	SEE SHEET 1	-	-	-

### FEED TYPE

#### PNEUMATIC

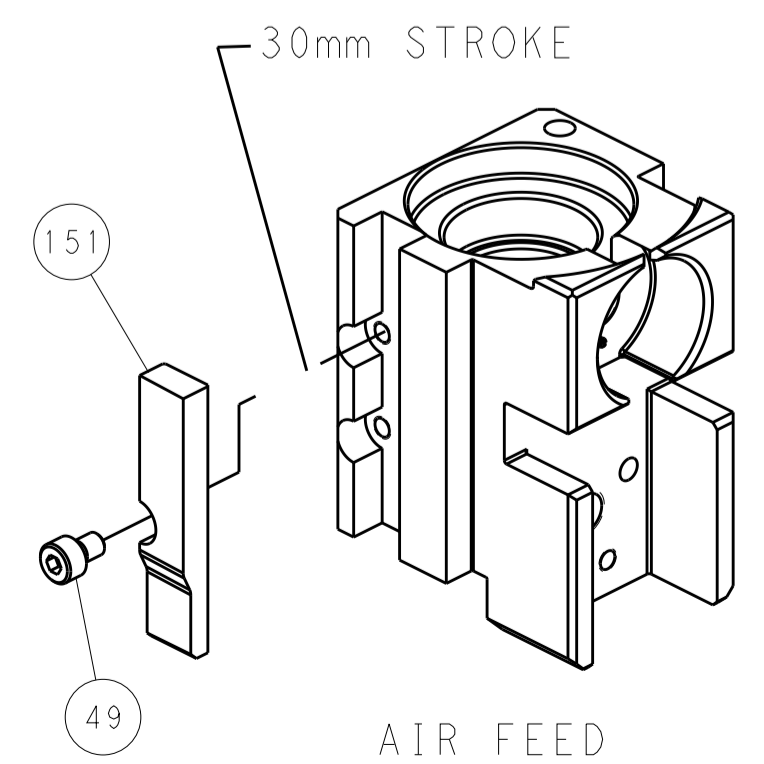


#### FEED SPRING SETTING POSITION (SHOWN FROM REAR SIDE)

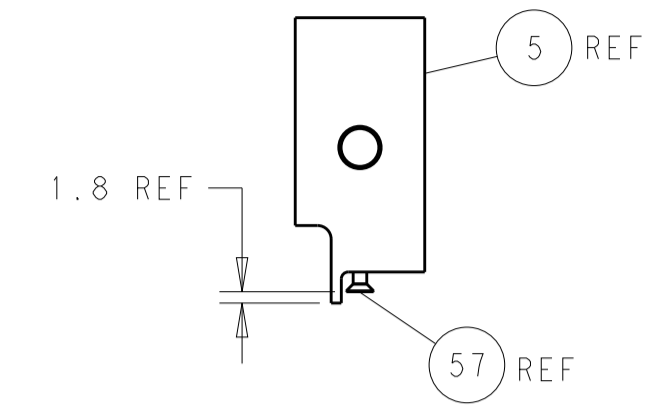
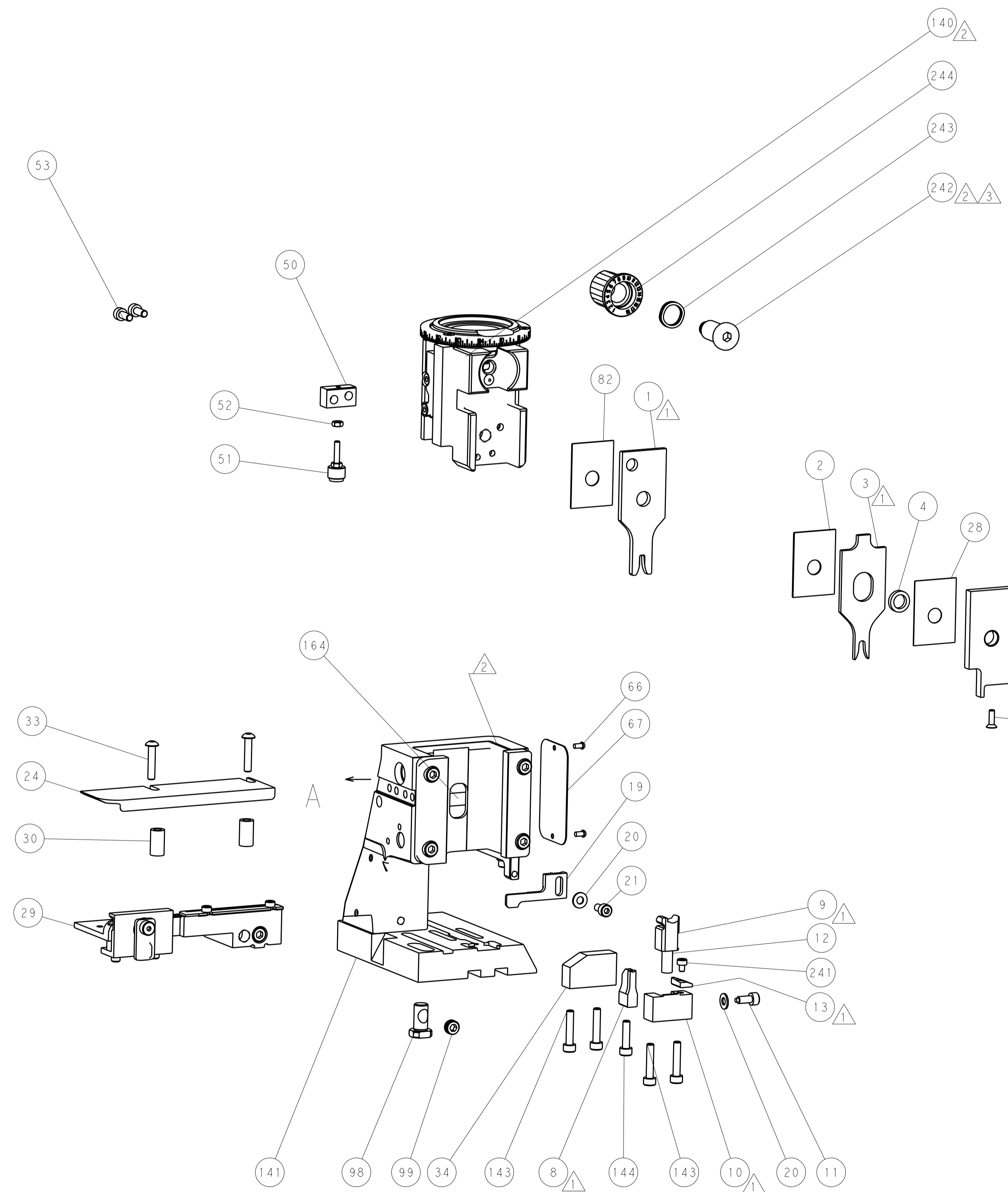


DETAIL A

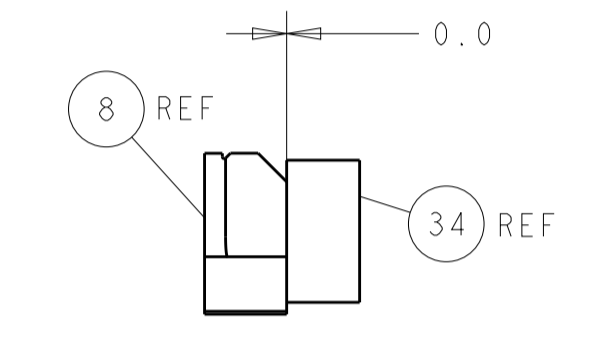
### CAM POSITION



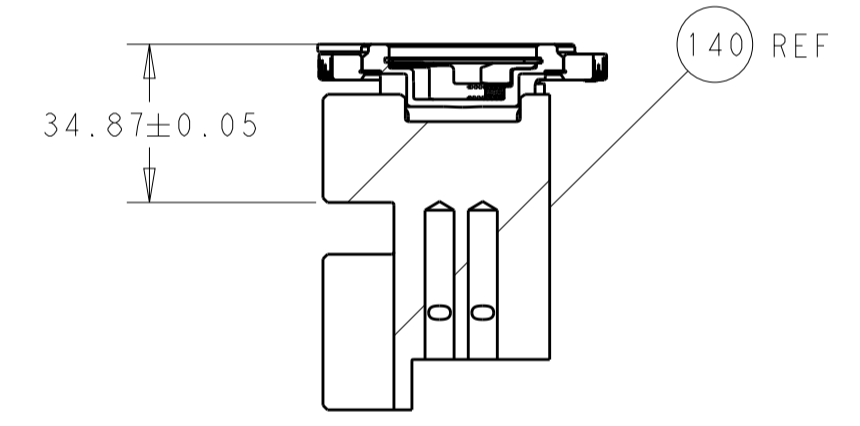
AIR FEED



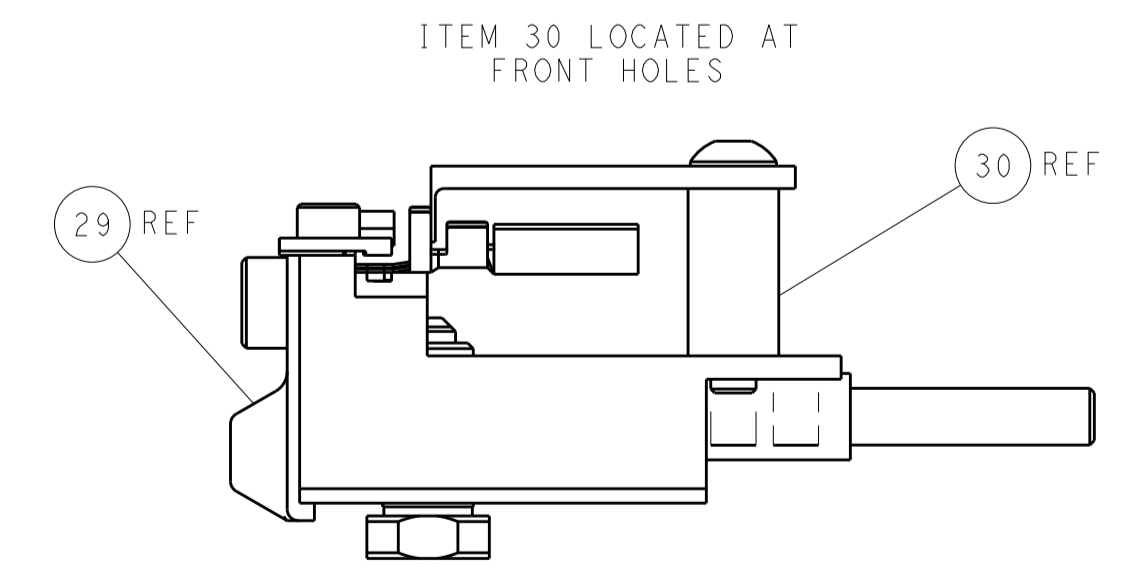
SHEAR DEPRESSOR DETAIL



TERMINAL SUPPORT LOCATION



RAM SET-UP



FEED TRACK POSITION GUIDE BY INSULATION BARREL

**PACIFIC VERSION**  
 Shown on sheets 3 of 4 & 4 of 4  
 (Atlantic version shown on sheets 1 of 4 & 2 of 4)

DIMENSIONS:		TOLERANCES UNLESS OTHERWISE SPECIFIED:		DWG: J. HOU 17SEP2015		TE Connectivity	
mm	0 PLC ±	1 PLC ±	2 PLC ±	3 PLC ±	4 PLC ±	5 PLC ±	Harrisburg, PA 17105-3608
	ANGLES	FINISH		CHK: L. ZHANG 17SEP2015	NAME: Ocean Side Feed Applicator		
MATERIAL:				APVD: H. GUO 17SEP2015	PRODUCT SPEC		
				APPLICATION SPEC		RESTRICTED TO	
				WEIGHT	SIZE: A1	CAGE CODE: 00779	DRAWING NO: C=2266989
				Customer Accessible Production Drawing		SCALE: 1:2	SHEET 4 OF 4 REV B