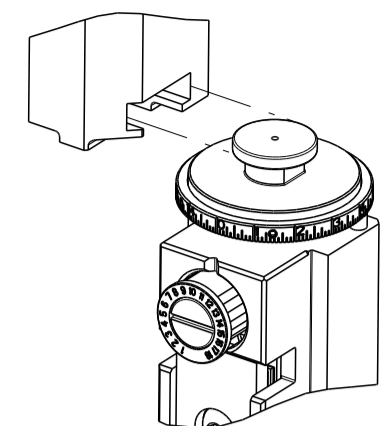


PART NUMBER	REVISION	DESCRIPTION	FEED TYPE
2266802-2	H	FINE CRIMP HEIGHT ADJUST	PNEUMATIC
7-2266802-2	H	PNEUMATIC AND CRIMP TOOLING KIT	PNEUMATIC
7-2266802-7	H	CRIMP TOOLING KIT	-

ATLANTIC VERSION TERMINATOR INTERFACE ADAPTER

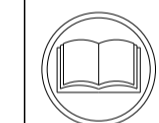


APPLICATOR DATA		
CRIMP	SIZE	TYPE
WIRE	0.61 mm [.024]	F
INSUL	0.61 mm [.024]	F

APPLICATOR INSTRUCTIONS 408-35042

TERMINAL DATA: HIROSE TERMINAL HIROSE CRIMP SPECIFICATION	
TERMINAL NAME: TERMINAL	
WIRE STRIP LENGTH 1.50-1.90 mm [.059-.075 IN]	INSULATION DIAMETER RANGE Ø0.60-0.88 mm [.024-.035 IN]
TERMINAL APPLICATION SPECIFICATION TAD-P-0506 Rev 1	-
TERMINALS APPLIED	
TE TERMINAL 2113715-1	HIROSE TERMINAL DF50-2830SCFA

WIRE SIZE	CRIMP HEIGHT mm [INCH]	CRIMP HEIGHT REFERENCE SETTING
28 AWG	0.48 +/- 0.02 [.019 +/- .001]	4.3
30 AWG	0.44 +/- 0.02 [.017 +/- .001]	4.7



- RECOMMENDED SPARE PARTS
- REFER TO SUPPLIED INSTRUCTION SHEET FOR CLEANING, LUBRICATION AND STORAGE OF APPLICATOR.
- APPLY PART NUMBER 2-23419-6 LOCTITE TO THREADS OF ITEM 242.
- CRIMP HEIGHT REFERENCE SETTING WAS THE SETTING USED WHEN THE APPLICATOR WAS QUALIFIED AT THE FACTORY. ADJUSTMENT MAY BE NECESSARY WHEN RUNNING APPLICATOR IN THE FIELD.
- TERMINAL PITCH NOT COMPATIBLE WITH MECHANICAL FEED.
- 6. UNLESS SPECIFIED OTHERWISE TORQUE VALUES SHALL BE USED PER DOCUMENT, 101-35000.
- INSULATION DIAMETER RANGE DOES NOT MEET HIROSE SPECIFICATION.
- TERMINAL LUBRICANT IS RECOMMENDED.
- GRIND TO LENGTH AT ASSEMBLY.

***WARNING**
ON INSTALLATION, SET WIRE DISC TO CRIMP HEIGHT REFERENCE SETTING FOR LARGEST WIRE SIZE. CRIMP HEIGHT REFERENCE SETTINGS GREATER THAN THE VALUE SHOWN MAY CAUSE DAMAGE TO THE CRIMP TOOLING. REFER TO THE INSTRUCTION SHEET FOR PROPER SETUP AND ADJUSTMENTS.

LOC	DIST	REVISIONS					
		P	LTN	DESCRIPTION	DATE	OWN	APVD
A	66	E1		ECR-19-007131	05MAY2019	FZ	CT
		F		ECR-19-008304	24MAY2019	RK	CT
		G		ECR-21-002833	05MAR2021	FJ	TE
		H		ECR-21-007146	04AUG2021	JAH	TE

-	1	1	2119641-1	FEED CAM, AIR FEED	248
-	1	1	2119082-5	CAM, SNAIL, INSULATION ADJUSTMENT	244
-	1	1	2079764-1	WASHER, WAVE SPRING, CREST-TO-CREST	243
-	1	1	2119083-1	RETAINER, INSULATION DIAL	242
-	1	1	2844940-1	AIR FEED MODULE	238
-	1	1	455053-2	PLATE, RETAINING	180
-	1	1	4-21028-0	PIN, SLOTTED SPRING .094 X .750	177
-	2	2	22278-2	COMPRESSION SPRING	176
-	1	1	1803129-1	PLATE, RETAINER	175
-	REF	REF	994970-2	COUNTER, MAGNETIC	164
-	1	1	2119955-1	ASSY, LUBRICATOR, SIDE FEED	113
-	1	1	2844908-1	SCREW, LOCKING	99
-	1	1	2844907-1	POST, LOCKING	98
-	1	1	1803607-3	DOCUMENTATION PACKAGE	71
-	1	1	1-2119791-4	DEPRESSOR, WIRE	70
-	1	1	2119740-1	TAG, IDENTIFICATION	67
-	2	2	2168078-1	SCREW, DRIVE, RH, RoHS, 2 x .188	66
-	1	1	2161425-1	SCREW, SHOULDER	60
-	1	1	5-18022-5	SCR, HEX HD CAP, M4 X 6.0	59
-	1	1	1338685-1	PAWL, FEED	56
-	2	2	2168083-3	SCR, SKT HD CAP, RoHS, M4 X 12.0	54
-	2	2	1-2168083-2	SCR, SKT HD CAP, RoHS, M4 X 25	53
-	1	1	18031-1	SCR, SET, CUP POINT M3 X 5.0	52
-	1	1	1-1803342-0	HOLDER, TERMINAL	51
-	1	1	1803202-1	CARRIER, HOLD DOWN	50
-	1	1	18023-9	SCR, SKT HD CAP M4 X 6.0	49
-	1	1	2-1803583-5	APPLICATOR BASIC ASSEMBLY, SF	46
-	1	1	1803515-4	RAM ASSEMBLY, SF ATLANTIC	44
-	1	1	1803602-1	SCR, BHSC, RoHS (M8 X 25)	41
-	2	2	2079383-5	SCR, BHSC, RoHS (M4 X 20)	33
-	2	2	2-2844962-3	SPACER, CYLINDRICAL, STRIP GUIDE	30
-	1	1	2844992-1	ASSEMBLY, STRIP GUIDE	29
-	1	1	1320928-2	STRIP GUIDE	24
-	1	1	2168083-2	SCR, SKT HD CAP, RoHS, M4 X 8.0	21
-	2	2	1-18028-2	WASHER, FLAT, REG M4	20
-	1	1	1803338-2	STRIPPER, SIDE FEED	19
-	1	1	3-22280-3	SPRING, COMPRESSION	12
-	1	1	1-2168083-0	SCR, SKT HD CAP, RoHS, M4 X 10	11
-	1	1	2119805-1	SHEAR HOLDER, FRONT	10
-	1	1	1803095-7	FLOATING SHEAR, FRONT	9
-	1	2	1-1803200-1	ANVIL, COMBINATION	8
-	-	-	-	-	7
-	-	-	-	-	6
-	1	1	1-2119757-8	DEPRESSOR, SHEAR	5
-	1	1	5-238011-3	BLOCK, CRIMPER SPACER	4
-	1	2	1-1803692-1	CRIMPER, INSULATION F PREMIUM	3
-	-	-	-	-	2
-	1	2	1-1803193-1	CRIMPER, WIRE PREMIUM	1

ATLANTIC VERSION
Shown on sheets 1 of 4 & 2 of 4
(Pacific version shown on sheets 3 of 4 & 4 of 4)

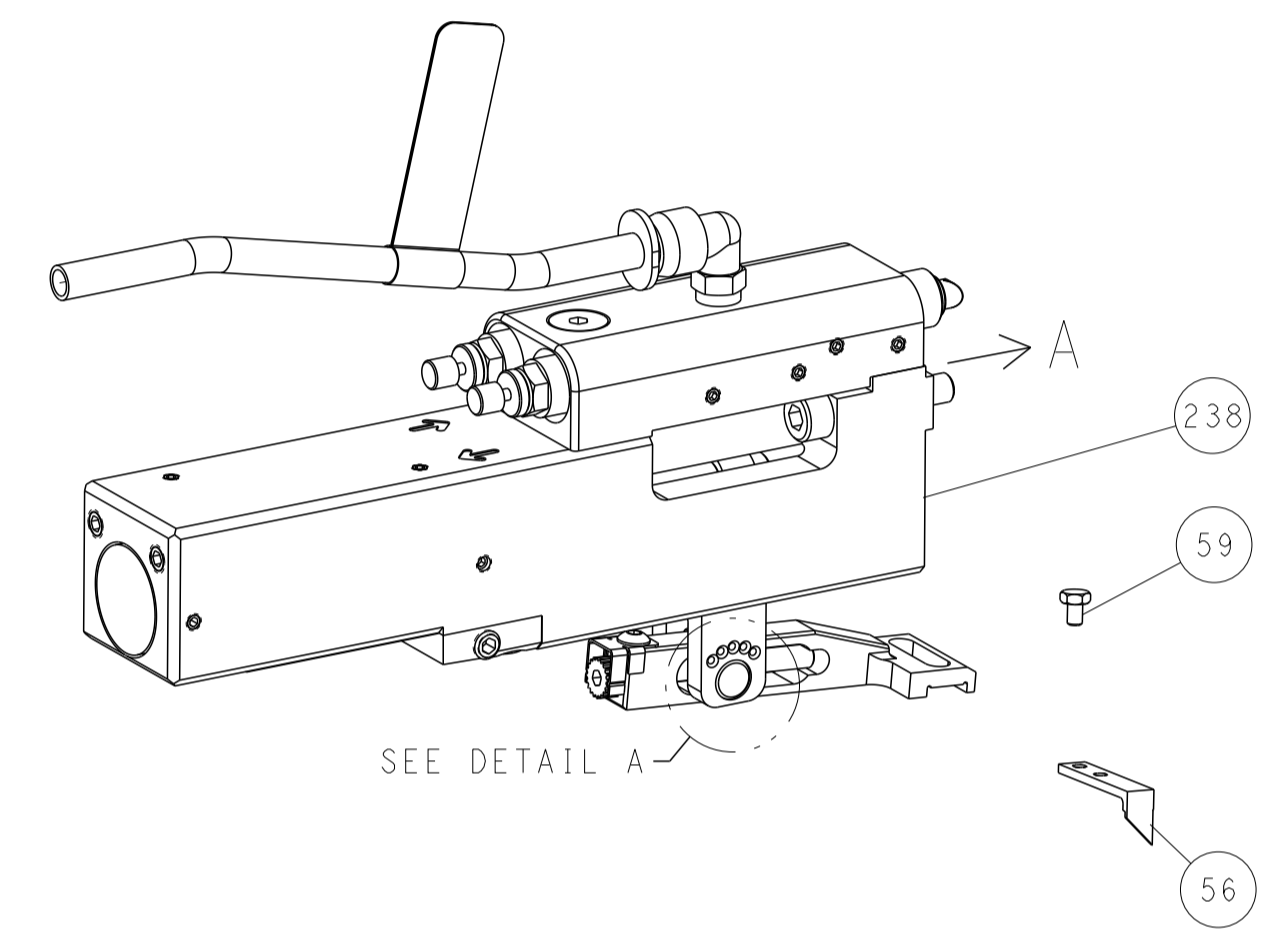
DIMENSIONS:		TOLERANCES UNLESS OTHERWISE SPECIFIED:		MATERIAL:		FINISH:	
mm	0 PLC ±	1 PLC ±	2 PLC ±	3 PLC ±	4 PLC ±	ANGLES	FINISH
MATERIAL		FINISH		WEIGHT		SCALE	

OWN	J. HOU	26MAY2015	TE Connectivity Harrisburg, PA 17105-3608			
CHK	L. ZHANG	26MAY2015				
APVD	J. GUO	26MAY2015				
NAME	Ocean Side Feed Applicator					
PRODUCT SPEC			SIZE	CAGE CODE	DRAWING NO	RESTRICTED TO
APPLICATION SPEC			A1	00779	2266802	
Customer Accessible Production Drawing			SCALE	1:2	SHEET	1 of 4
			REV	H		

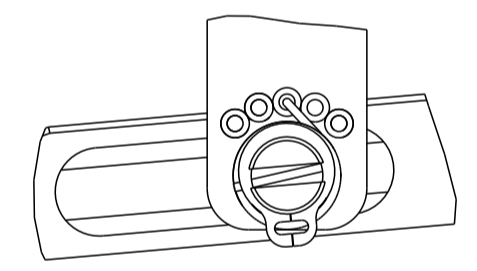
LOC		DIST		REVISIONS			
A	66	P	LTH	DESCRIPTION	DATE	OWN	APVD
		-		SEE SHEET 1	-	-	-

FEED TYPE

PNEUMATIC

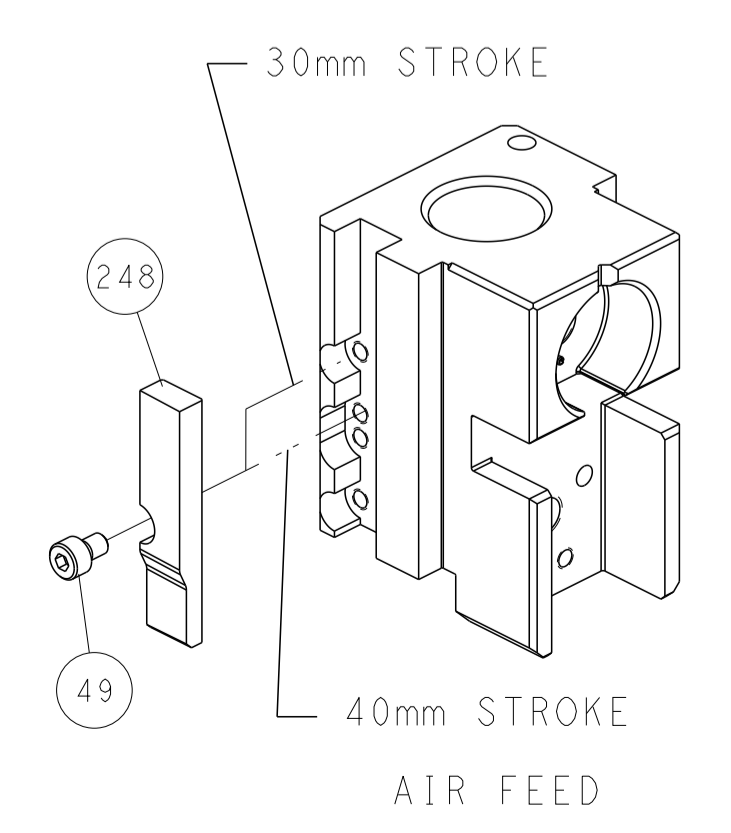


FEED SPRING SETTING POSITION
(SHOWN FROM REAR SIDE)

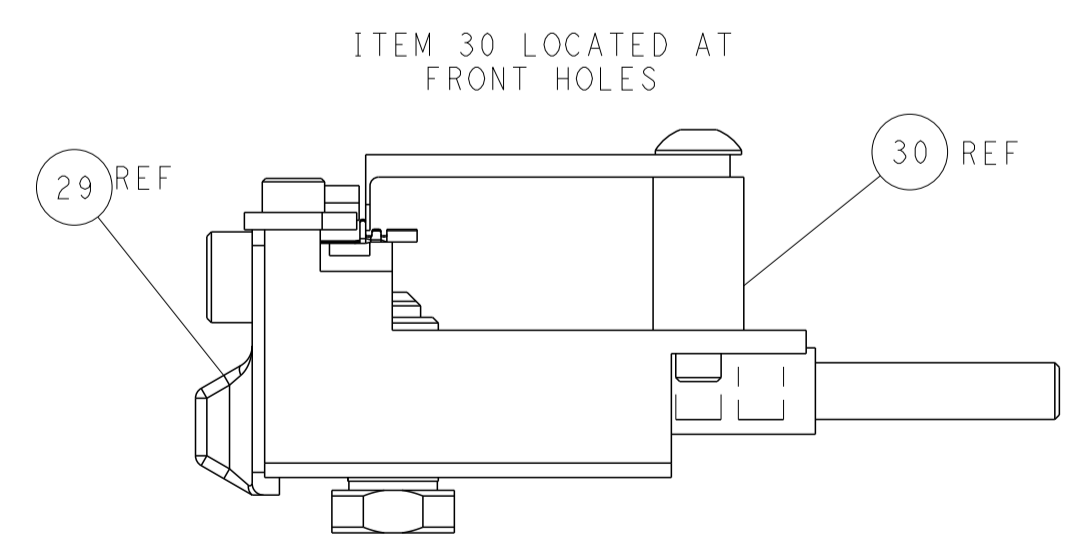
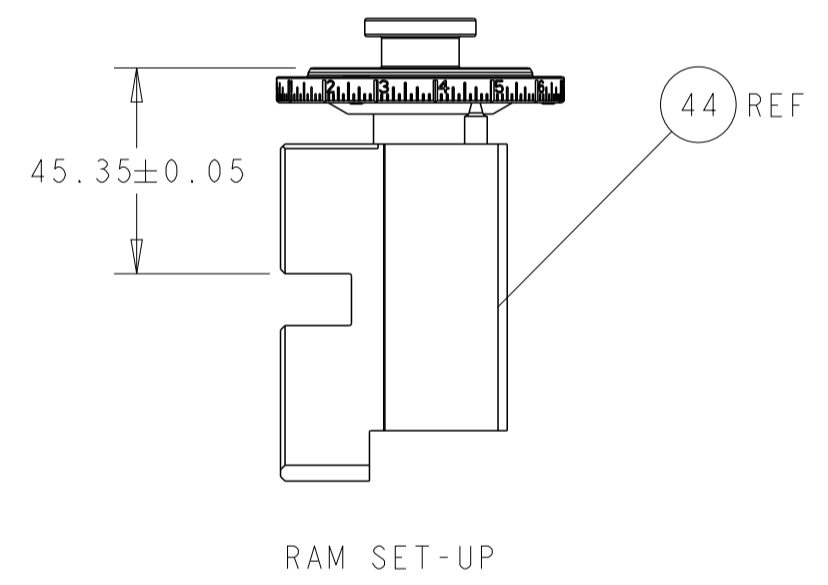
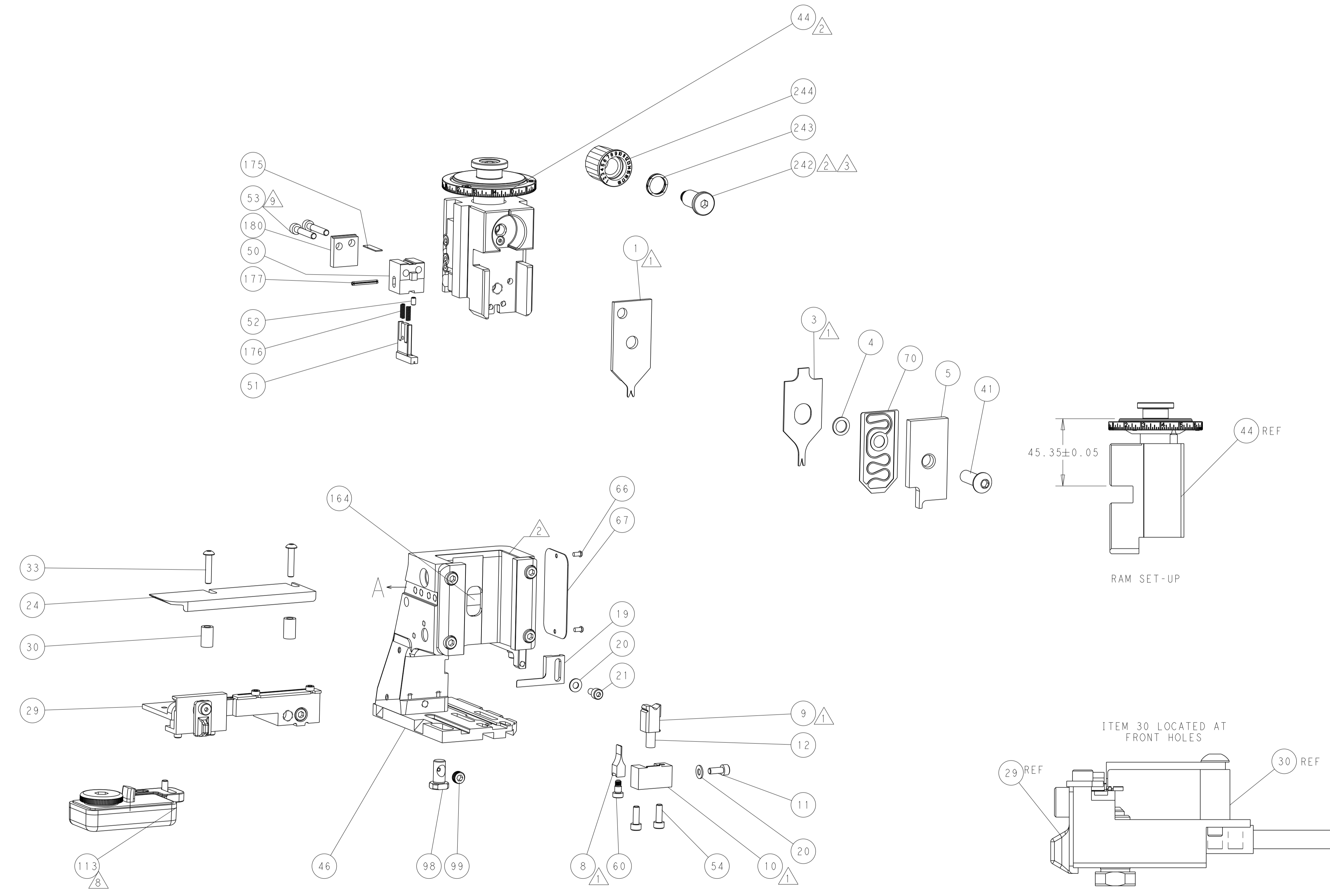


DETAIL A

CAM POSITION



AIR FEED



ATLANTIC VERSION
 Shown on sheets 1 of 4 & 2 of 4
 (Pacific version shown on sheets 3 of 4 & 4 of 4)

DIMENSIONS:		TOLERANCES UNLESS OTHERWISE SPECIFIED:		DWG: J. HOU 26MAY2015		TE Connectivity	
mm	0 PLC ±	1 PLC ±	2 PLC ±	3 PLC ±	4 PLC ±	CHK: L. ZHANG 26MAY2015	Harrisburg, PA 17105-3608
	ANGLES ±	FINISH ±	APVD: J. GUO 26MAY2015		NAME: Ocean Side Feed Applicator		
MATERIAL:			WEIGHT:		SIZE: A1	CAGE CODE: 00779	DRAWING NO: C=2266802
Customer Accessible Production Drawing				SCALE: 1:2	SHEET: 2	OF: 4	REV: H

PART NUMBER	REVISION	DESCRIPTION	FEED TYPE
2-2266802-2	H	FINE CRIMP HEIGHT ADJUST	PNEUMATIC
7-2266802-7	H	CRIMP TOOLING KIT	-

PACIFIC VERSION TERMINATOR
INTERFACE ADAPTER



APPLICATOR DATA		
CRIMP	SIZE	TYPE
WIRE	0.61 mm [.024]	F
INSUL	0.61 mm [.024]	F
APPLICATOR INSTRUCTIONS 408-35042		

TERMINAL DATA: HIROSE TERMINAL HIROSE CRIMP SPECIFICATION	
TERMINAL NAME: TERMINAL	
WIRE STRIP LENGTH 1.50-1.90 mm [.059-.075 IN]	INSULATION DIAMETER RANGE Ø0.60-0.88 mm [.024-.035 IN]
TERMINAL APPLICATION SPECIFICATION TAD-P-0506 Rev 1	
TERMINALS APPLIED	
TE TERMINAL 2113715-1	HIROSE TERMINAL DF50-2830SCFA

WIRE SIZE	CRIMP HEIGHT mm [INCH]	CRIMP HEIGHT REFERENCE SETTING
28 AWG	0.48+/-0.02 [.019+/-0.001]	4.3
30 AWG	0.44+/-0.02 [.017+/-0.001]	4.7

- RECOMMENDED SPARE PARTS
- REFER TO SUPPLIED INSTRUCTION SHEET FOR CLEANING, LUBRICATION AND STORAGE OF APPLICATOR.
- APPLY PART NUMBER 2-23419-6 LOCTITE TO THREADS OF ITEM 242.
- CRIMP HEIGHT REFERENCE SETTING WAS THE SETTING USED WHEN THE APPLICATOR WAS QUALIFIED AT THE FACTORY. ADJUSTMENT MAY BE NECESSARY WHEN RUNNING APPLICATOR IN THE FIELD.
- TERMINAL PITCH NOT COMPATIBLE WITH MECHANICAL FEED.
- UNLESS SPECIFIED OTHERWISE TORQUE VALUES SHALL BE USED PER DOCUMENT, 101-35000.
- INSULATION DIAMETER RANGE DOES NOT MEET HIROSE SPECIFICATION.
- TERMINAL LUBRICANT IS RECOMMENDED.
- GRIND TO LENGTH AT ASSEMBLY.

***WARNING**
ON INSTALLATION, SET WIRE DISC TO CRIMP HEIGHT REFERENCE SETTING FOR LARGEST WIRE SIZE. CRIMP HEIGHT REFERENCE SETTINGS GREATER THAN THE VALUE SHOWN MAY CAUSE DAMAGE TO THE CRIMP TOOLING. REFER TO THE INSTRUCTION SHEET FOR PROPER SETUP AND ADJUSTMENTS.

LOC	DIST	REVISIONS					
A	66	P	LTN	DESCRIPTION	DATE	OWN	APVD
-	-	-	-	SEE SHEET 1	-	-	-

-	1	2119082-5	CAM, SNAIL, INSULATION ADJUSTMENT	244
-	1	2079764-1	WASHER, WAVE SPRING, CREST-TO-CREST	243
3	-	2119083-1	RETAINER, INSULATION DIAL	242
-	1	2844940-1	AIR FEED MODULE	238
-	1	455053-2	PLATE, RETAINING	180
-	1	4-21028-0	PIN, SLOTTED SPRING .094 X .750	177
-	2	22278-2	COMPRESSION SPRING	176
-	1	1803129-1	PLATE, RETAINER	175
-	REF	994970-2	COUNTER, MAGNETIC	164
-	1	2119641-2	FEED CAM, AIR FEED	151
-	1	2161425-1	SCREW, SHOULDER	144
-	2	2168083-9	SCR, SKT HD CAP, RoHS, M4 X 20	143
-	1	3-1803583-0	APPLICATOR BASIC ASSEMBLY, SF	141
-	1	1803516-3	RAM ASSEMBLY, SF PACIFIC	140
8	-	2119955-1	ASSY, LUBRICATOR, SIDE FEED	113
-	1	2844908-1	SCREW, LOCKING	99
-	1	2844907-1	POST, LOCKING	98
-	1	1803607-3	DOCUMENTATION PACKAGE	71
-	1	1-2119791-4	DEPRESSOR, WIRE	70
-	1	2119740-1	TAG, IDENTIFICATION	67
-	2	2168078-1	SCREW, DRIVE, RH, RoHS, 2 x .188	66
-	1	5-18022-5	SCR, HEX HD CAP, M4 X 6.0	59
-	1	1338685-1	PAWL, FEED	56
9	-	2168083-2	SCR, SKT HD CAP, RoHS, M4 X 25	53
-	1	18031-1	SCR, SET, CUP POINT M3 X 5.0	52
-	1	1-1803342-0	HOLDER, TERMINAL	51
-	1	1803202-1	CARRIER, HOLD DOWN	50
-	1	18023-9	SCR, SKT HD CAP M4 X 6.0	49
-	1	1803602-1	SCR, BHSC, RoHS (M8 X 25)	41
-	2	2079383-5	SCR, BHSC, RoHS (M4 X 20)	33
-	2	2-2844962-3	SPACER, CYLINDRICAL, STRIP GUIDE	30
-	1	2844992-1	ASSEMBLY, STRIP GUIDE	29
-	1	1320928-2	STRIP GUIDE	24
-	1	2168083-2	SCR, SKT HD CAP, RoHS, M4 X 8.0	21
-	2	1-18028-2	WASHER, FLAT, REG M4	20
-	1	1803338-2	STRIPPER, SIDE FEED	19
-	1	3-22280-3	SPRING, COMPRESSION	12
-	1	1-2168083-0	SCR, SKT HD CAP, RoHS, M4 X 10	11
1	-	2119805-1	SHEAR HOLDER, FRONT	10
1	-	1803095-7	FLOATING SHEAR, FRONT	9
1	1	3-1803200-1	ANVIL, COMBINATION	8
-	-	-	-	7
-	-	-	-	6
-	1	1-2119757-8	DEPRESSOR, SHEAR	5
-	1	5-238011-3	BLOCK, CRIMPER SPACER	4
1	1	1-1803692-1	CRIMPER, INSULATION F PREMIUM	3
-	-	-	-	2
1	1	2-1803193-1	CRIMPER, WIRE PREMIUM	1
-	-	-	-	0
-	-	-	-	0

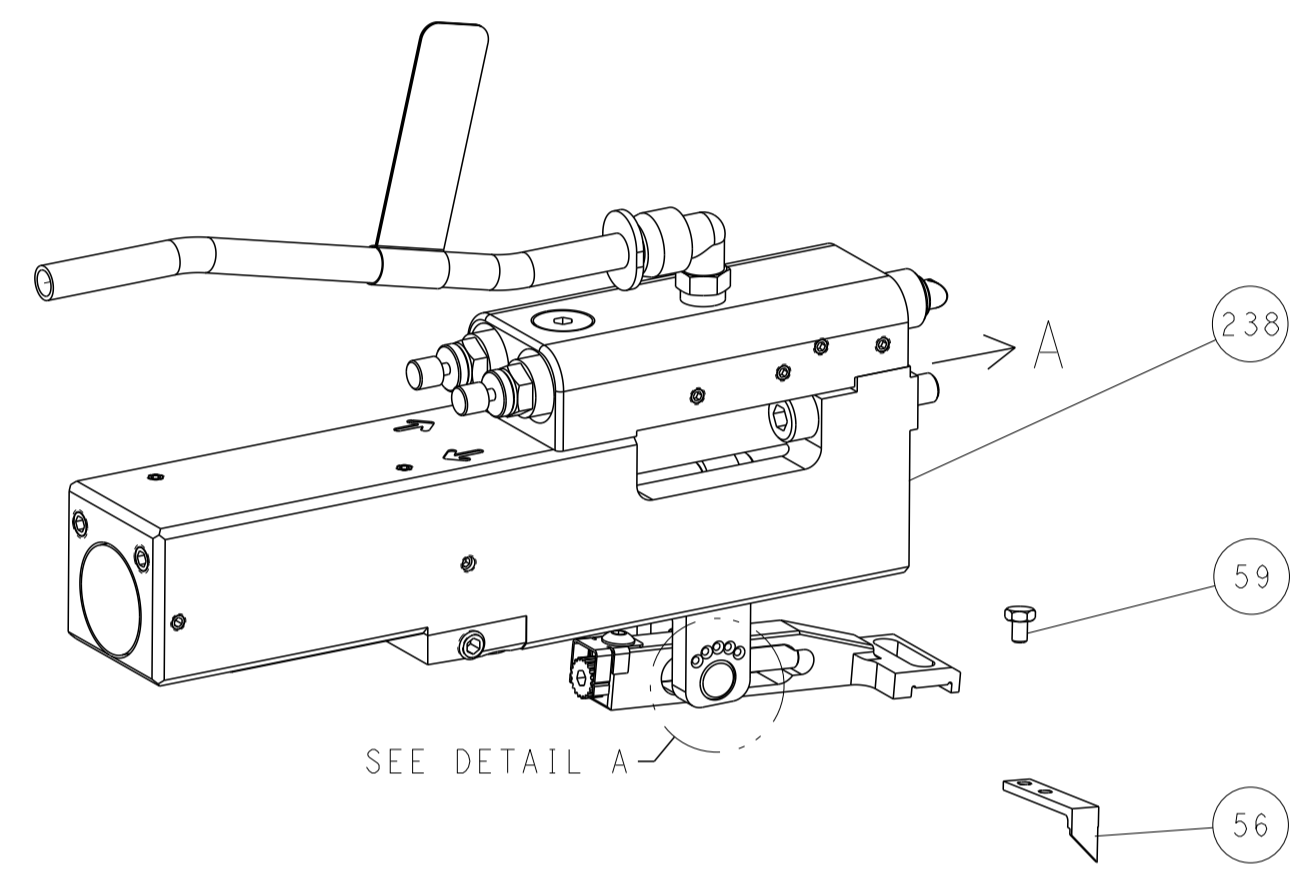
PACIFIC VERSION
Shown on sheets 3 of 4 & 4 of 4
(Atlantic version shown on sheets 1 of 4 & 2 of 4)

DIMENSIONS:		TOLERANCES UNLESS OTHERWISE SPECIFIED:		DWG J. HOU 26MAY2015		REV L. ZHANG 26MAY2015		NAME Ocean Side Feed Applicator	
mm	0 PLC ±	1 PLC ±	2 PLC ±	3 PLC ±	4 PLC ±	APVD J. GUO 26MAY2015	PRODUCT SPEC	APPLICATION SPEC	SIZE A1
MATERIAL	FINISH	WEIGHT	SCALE 1:2	SHEET 3	OF 4	REV H	Customer Accessible Production Drawing		

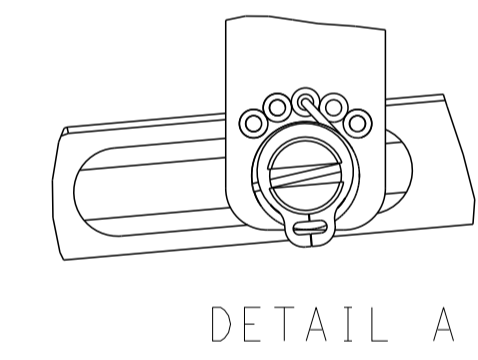
LOC	DIST	REVISIONS					
A	66	P	LTN	DESCRIPTION	DATE	DWN	APVD
		-		SEE SHEET 1	-	-	-

FEED TYPE

PNEUMATIC

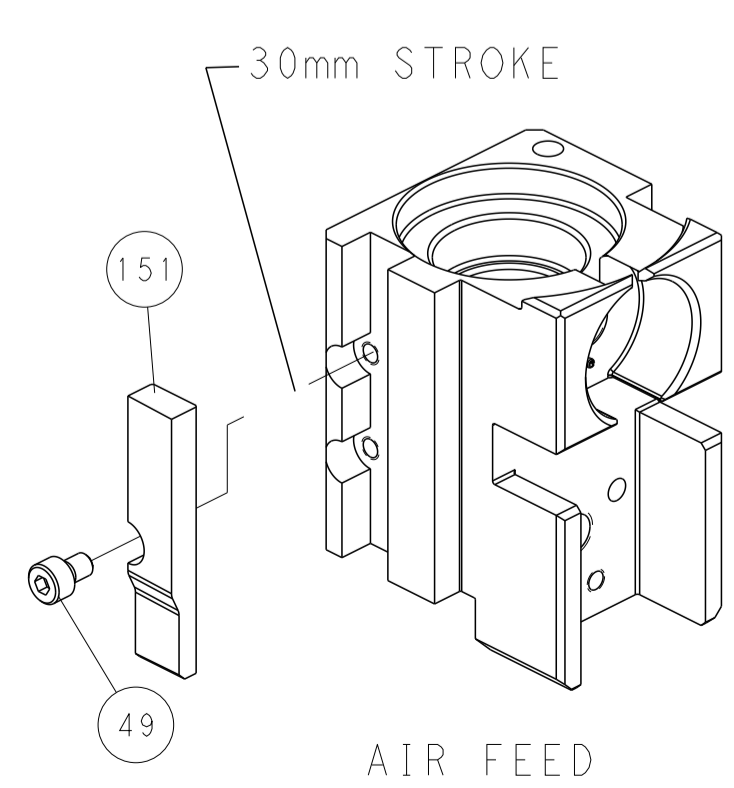


FEED SPRING SETTING POSITION (SHOWN FROM REAR SIDE)

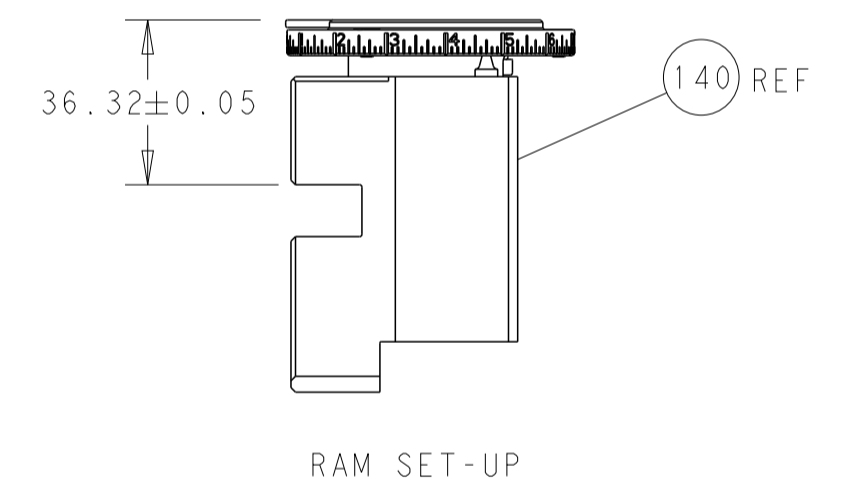
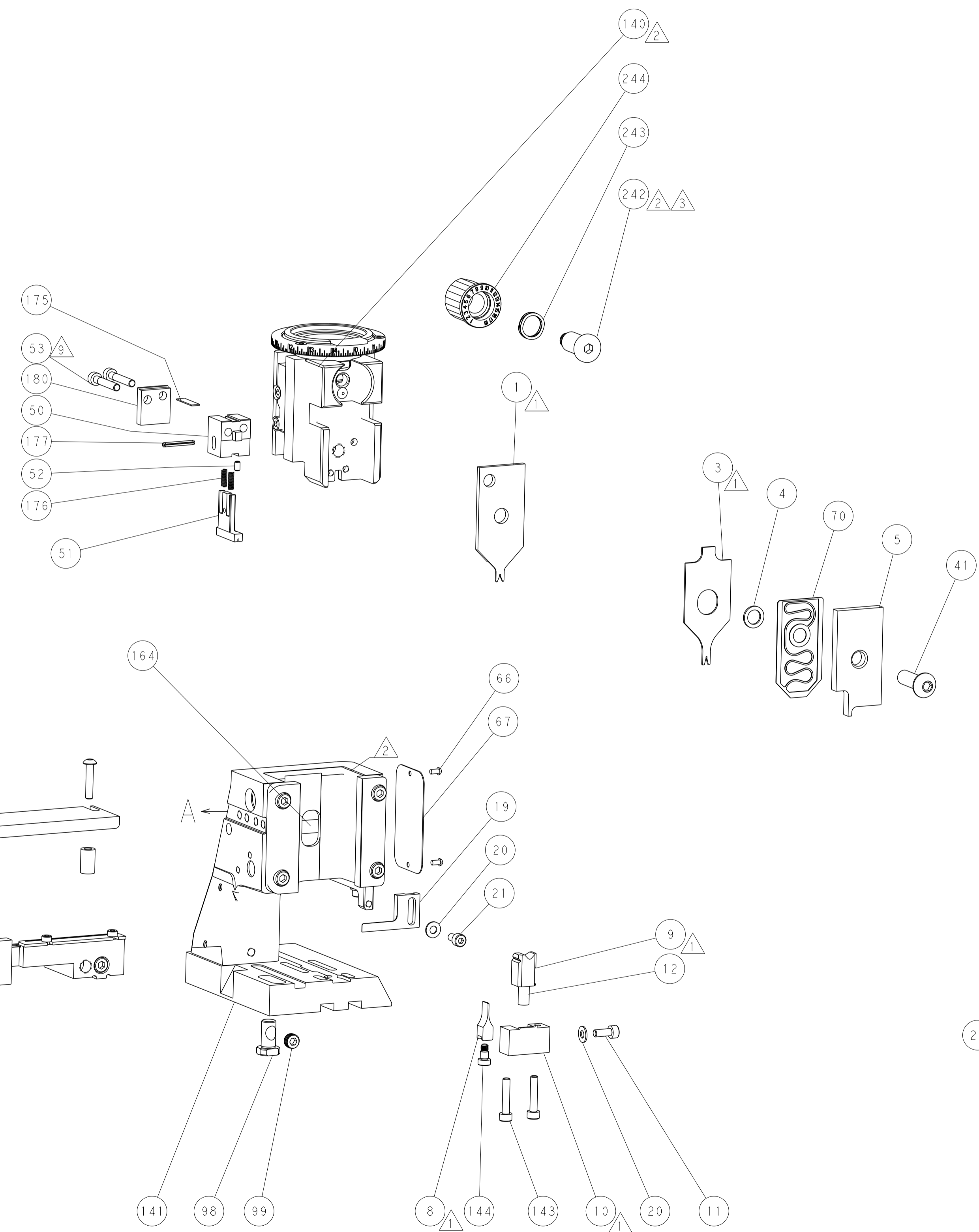


DETAIL A

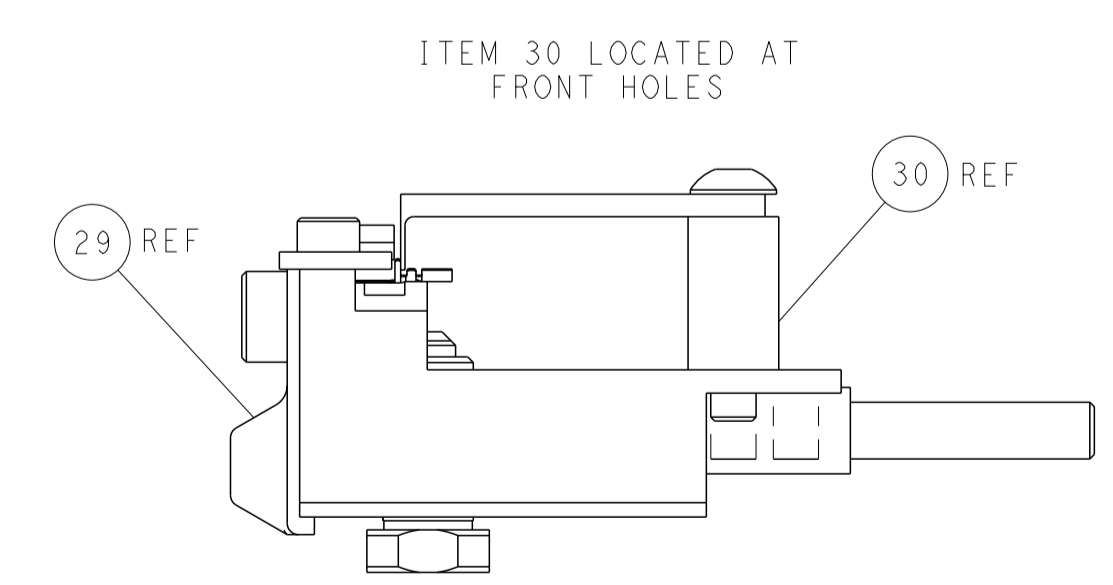
CAM POSITION



AIR FEED



RAM SET-UP



FEED TRACK POSITION GUIDE BY INSULATION BARREL

PACIFIC VERSION
 Shown on sheets 3 of 4 & 4 of 4
 (Atlantic version shown on sheets 1 of 4 & 2 of 4)

DIMENSIONS:		TOLERANCES UNLESS OTHERWISE SPECIFIED:		DWN J. HOU 26MAY2015		TE Connectivity	
mm	0 PLC ±	1 PLC ±	2 PLC ±	3 PLC ±	4 PLC ±	5 PLC ±	Harrisburg, PA 17105-3608
	ANGLES	FINISH		CHK L. ZHANG 26MAY2015	NAME		
MATERIAL				APVD J. GUO 26MAY2015	Ocean Side Feed Applicator		
				PRODUCT SPEC	SIZE	CAGE CODE	DRAWING NO
				APPLICATION SPEC	A1	00779	2266802
				RESTRICTED TO	WEIGHT	SCALE	SHEET 4 OF 4 REV H
				Customer Accessible Production Drawing	1:2		