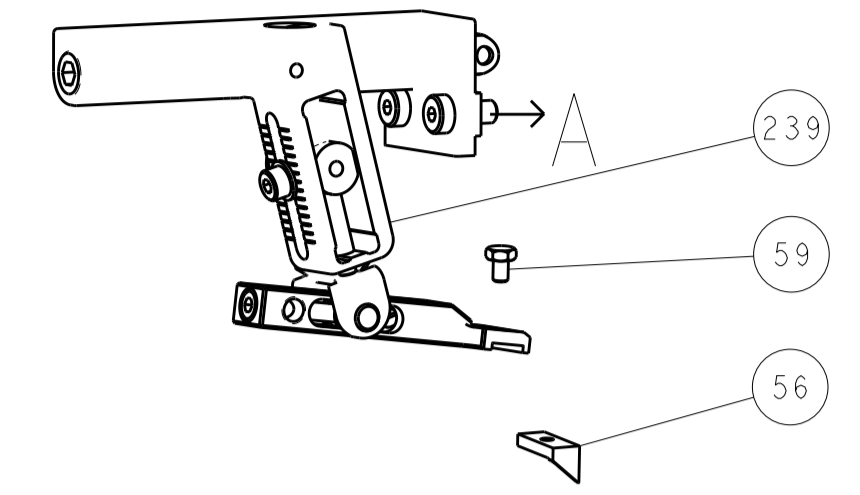
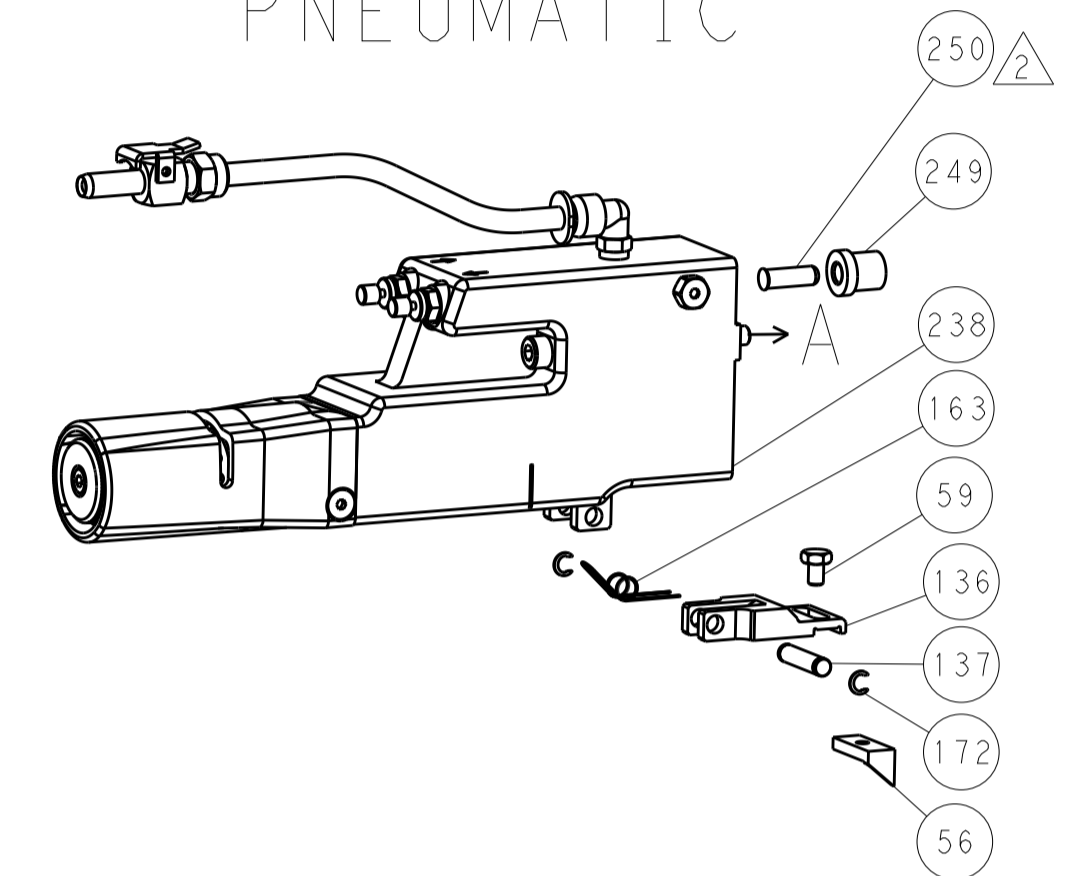


LOC		DIST		REVISIONS			
A	66	P	LTM	DESCRIPTION	DATE	OWN	APVD
		-	-	SEE SHEET 1	-	-	-

FEED TYPE MECHANICAL



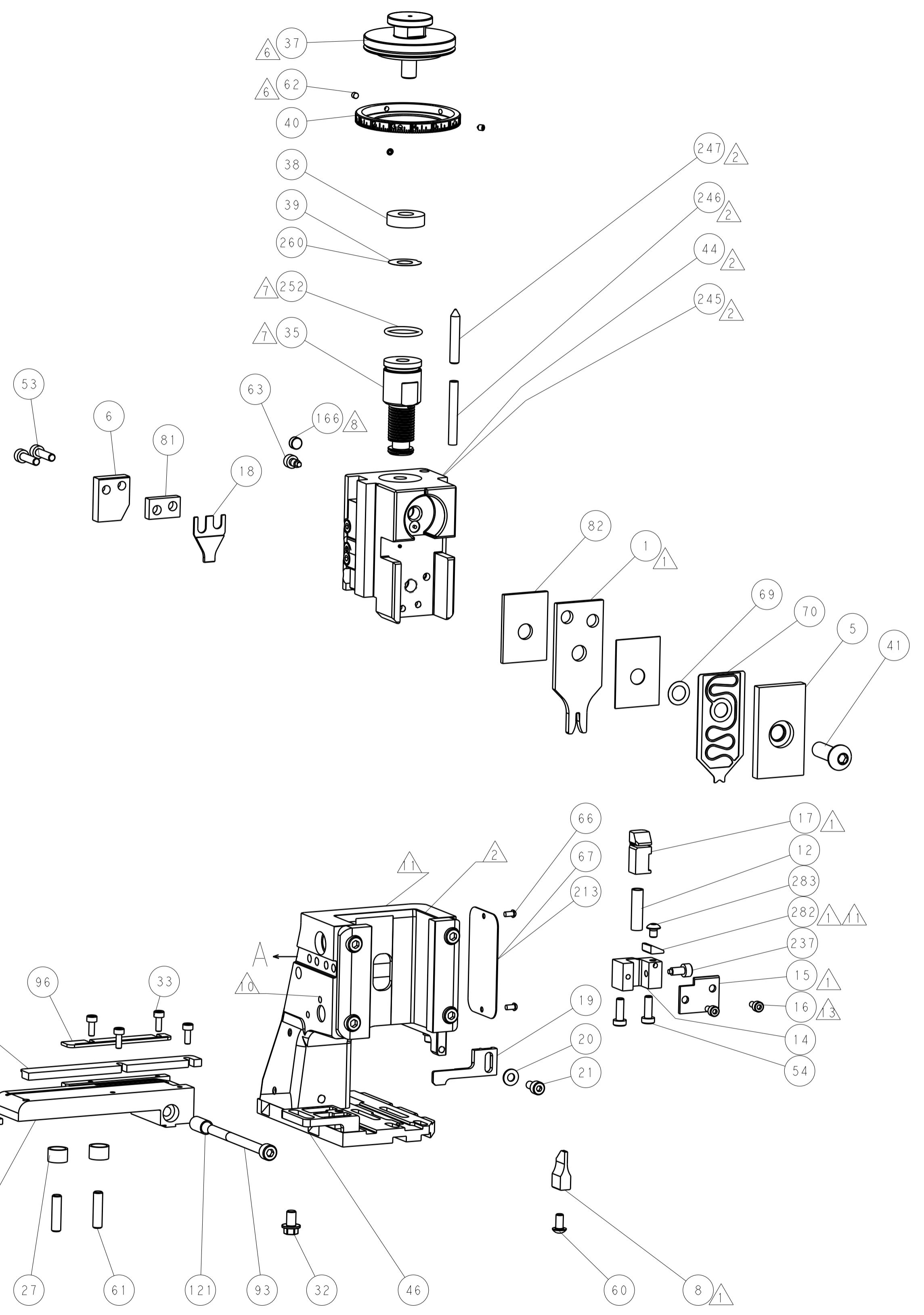
PNEUMATIC



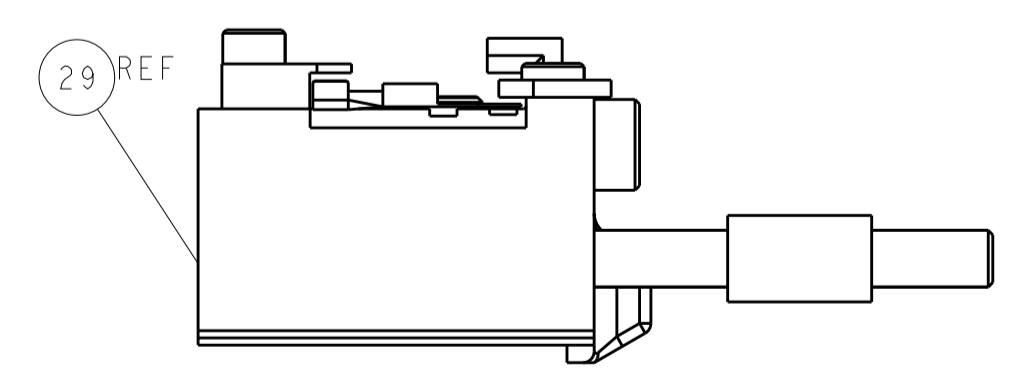
SERVO LATCH PLATE



CAM POSITIONS



ITEM 30 LOCATED AT REAR HOLES



FEED TRACK POSITION GUIDE BY GUIDE_BY_STR

ATLANTIC VERSION
 Shown on sheets 1 of 4 & 2 of 4
 (Pacific version shown on sheets 3 of 4 & 4 of 4)

DIMENSIONS:		TOLERANCES UNLESS OTHERWISE SPECIFIED:		DWN: J. HOU 17MAR2015		TE Connectivity	
mm	0 PLC ±0.5	1 PLC ±0.5	2 PLC ±0.13	3 PLC ±0.013	4 PLC ±0.001	APVD: L. ZHANG 17MAR2015	Harrisburg, PA 17105-3608
MATERIAL:		FINISH:		NAME: Ocean Side Feed Applicator		RESTRICTED TO:	
Customer Accessible Production Drawing		SCALE: 1:2		SIZE: A1 CAGE CODE: 00779 DRAWING NO: 2266724		SHEET 2 OF 4 REV A	

APPLICATOR STYLE CONVERSION CHART. Table with columns: CONVERT TO, PART NUMBERS REQUIRED (PNEUMATIC FEED, SERVO LATCH PLATE, SMART APPLICATOR, MECHANICAL FEED, etc.).

APPLICATOR DATA. Table with columns: CRIMP, SIZE, TYPE, WIRE, INSUL. Below: APPLICATOR INSTRUCTIONS 408-10389.

TERMINAL DATA: ETCO(JUNO) TERMINAL TE CRIMP SPECIFICATION. TERMINAL NAME: .110 FEMALE DISCONNECT.

WIRE STRIP LENGTH and INSULATION DIAMETER RANGE table.

TERMINAL APPLICATION SPECIFICATION. NONE.

TERMINALS APPLIED. Table with columns: TE TERMINAL, ETCO(JUNO) TERMINAL.

WIRE SIZE and CRIMP HEIGHT REFERENCE SETTING table.



- RECOMMENDED SPARE PARTS
GREASE BEARING SURFACES LIGHTLY
LUBRICATE DAILY PER THE APPLICATOR INSTRUCTION SHEET SUPPLIED WITH THE APPLICATOR.
APPLICATOR SPECIFIC DATA TO BE ENTERED INTO BLANK MEMORY CHIP AT ASSEMBLY...

*WARNING ON INSTALLATION, SET WIRE DISC, ITEM 40 TO LARGEST WIRE SIZE SETTING. USE OF SETTINGS BELOW MINIMUM REQUIRED CRIMP HEIGHT SETTING WILL CAUSE DAMAGE TO CRIMP TOOLING.

Table with columns: PART NO, DESCRIPTION, ITEM NO. Includes items like SCR, BTN SKT HD CAP, INSERT, SHEAR, FINE ADJUST HEAD ASM, etc.

PACIFIC VERSION Shown on sheets 3 of 4 & 4 of 4 (Atlantic version shown on sheets 1 of 4 & 2 of 4)

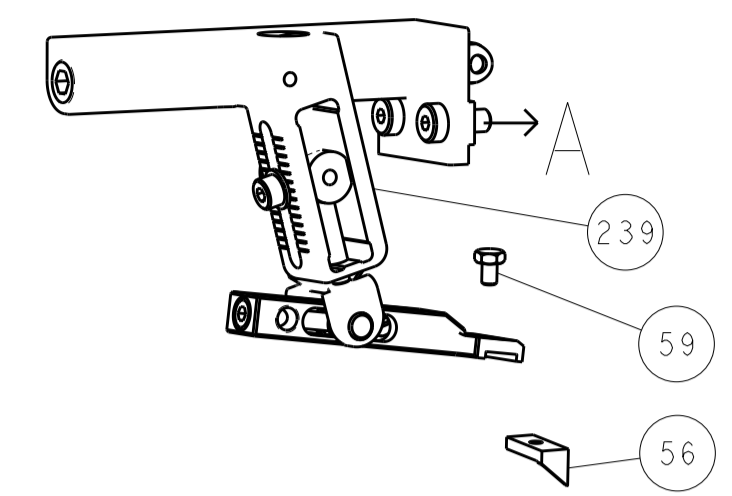
REVISIONS table with columns: P, LTR, DESCRIPTION, DATE, DWN, APVD.

Main parts list table with columns: QTY, P, LTR, DESCRIPTION, DATE, DWN, APVD. Lists various components like SPRING, COMPRESSION; SHCS, LOW HEAD, RoHS; MECHANICAL FEED ASSEMBLY, etc.

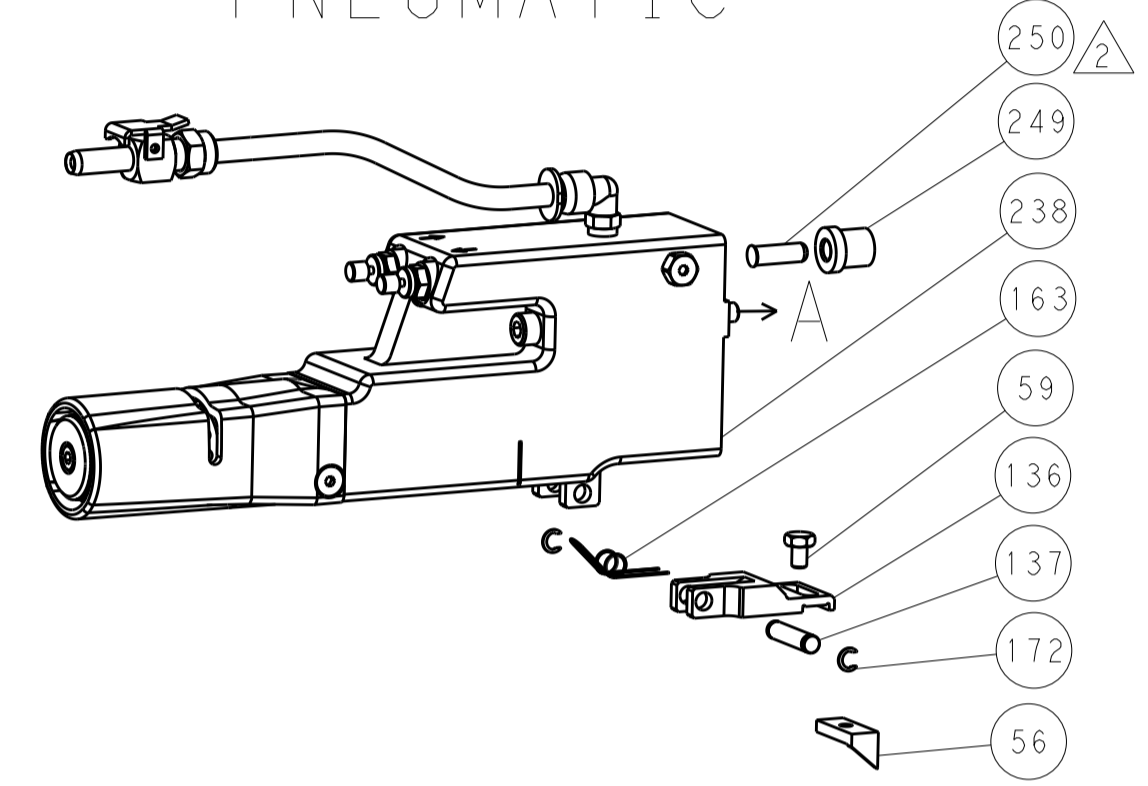
Technical drawing header/footer including DIMENSIONS, TOLERANCES, MATERIAL, FINISH, and company information for STC TE Connectivity.

LOC		DIST		REVISIONS			
A	66	P	LTM	DESCRIPTION	DATE	OWN	APVD
		-	-	SEE SHEET 1	-	-	-

FEED TYPE MECHANICAL



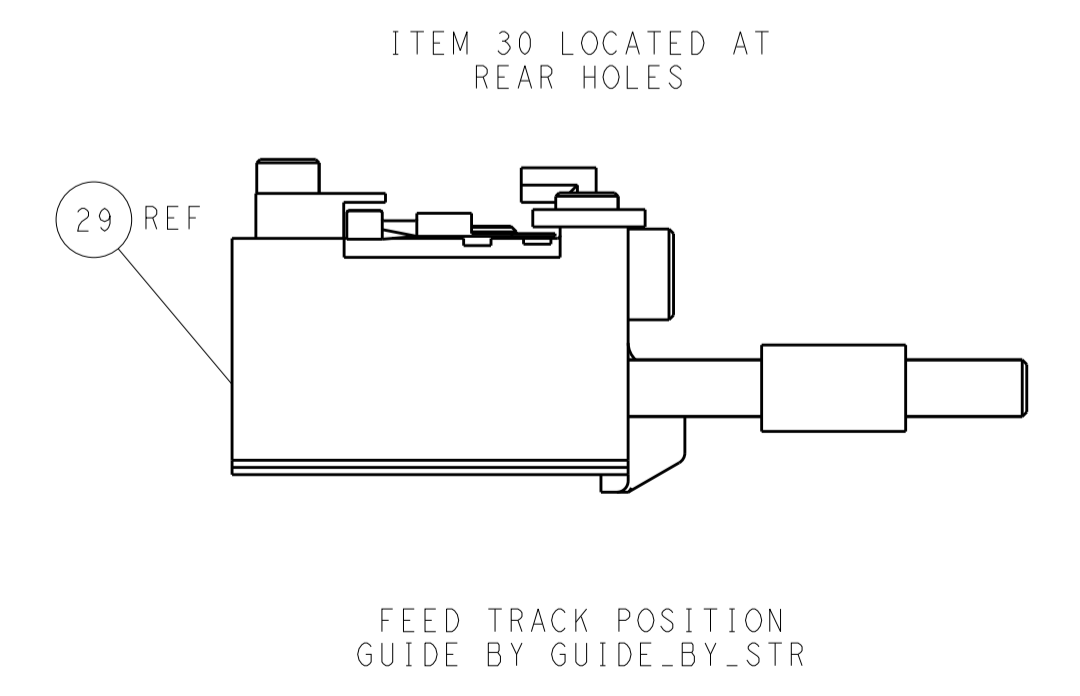
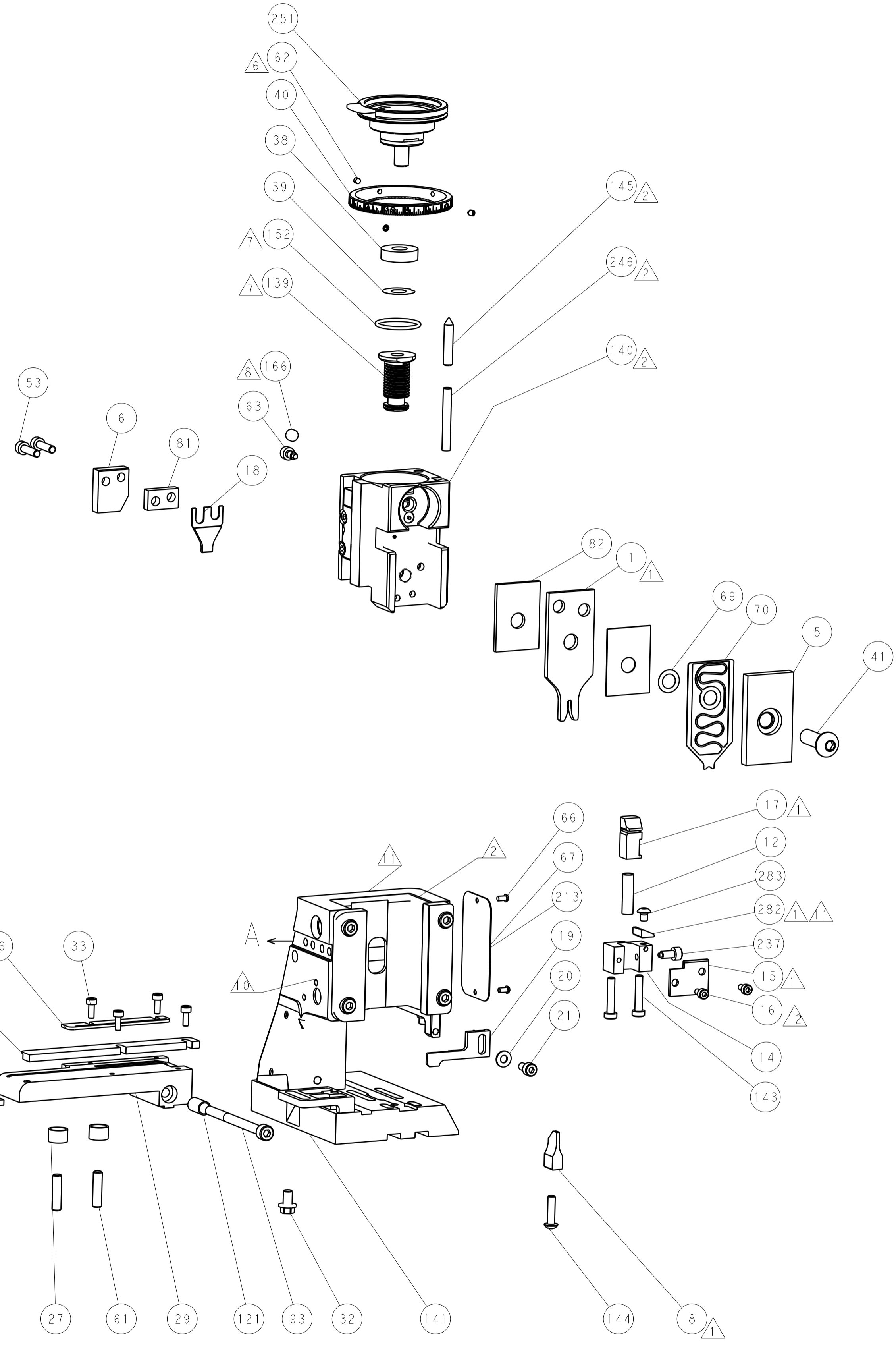
PNEUMATIC



SERVO LATCH PLATE



CAM POSITIONS



PACIFIC VERSION
 Shown on sheets 3 of 4 & 4 of 4
 (Atlantic version shown on sheets 1 of 4 & 2 of 4)

DIMENSIONS:		TOLERANCES UNLESS OTHERWISE SPECIFIED:		DWG: J. HOU 17MAR2015		CHK: L. ZHANG 17MAR2015		APVD: H. GUO 17MAR2015		NAME: STE TE Connectivity Harrisburg, PA 17105-3608	
mm	0 PLC ±.5	1 PLC ±0.5	2 PLC ±0.13	3 PLC ±0.013	4 PLC ±0.001	ANGLES	FINISH	PRODUCT SPEC	APPLICATION SPEC	SIZE	CAGE CODE
MATERIAL								00779	2266724	SCALE	1:2
Customer Accessible Production Drawing										SHEET	4
										REV	A