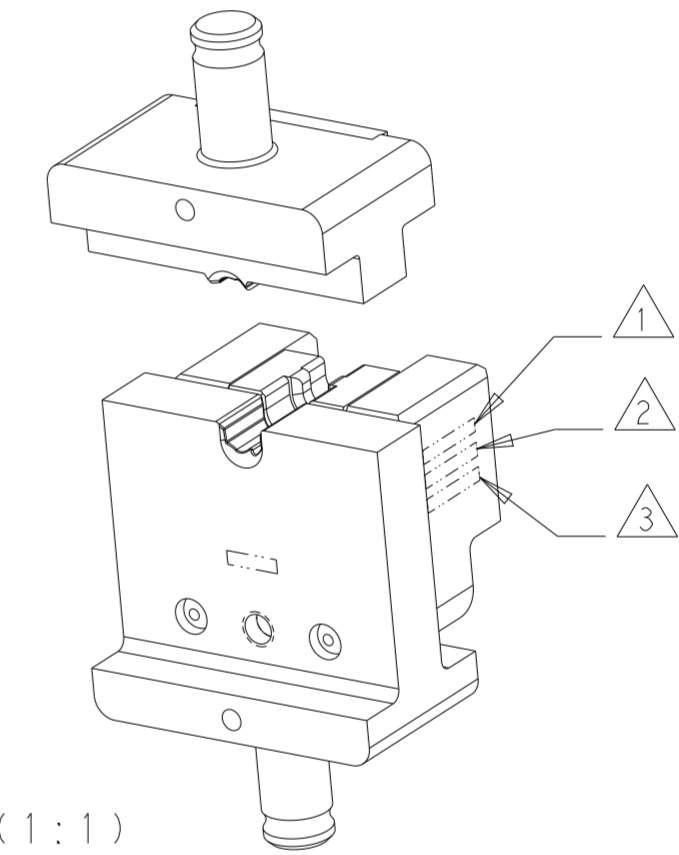
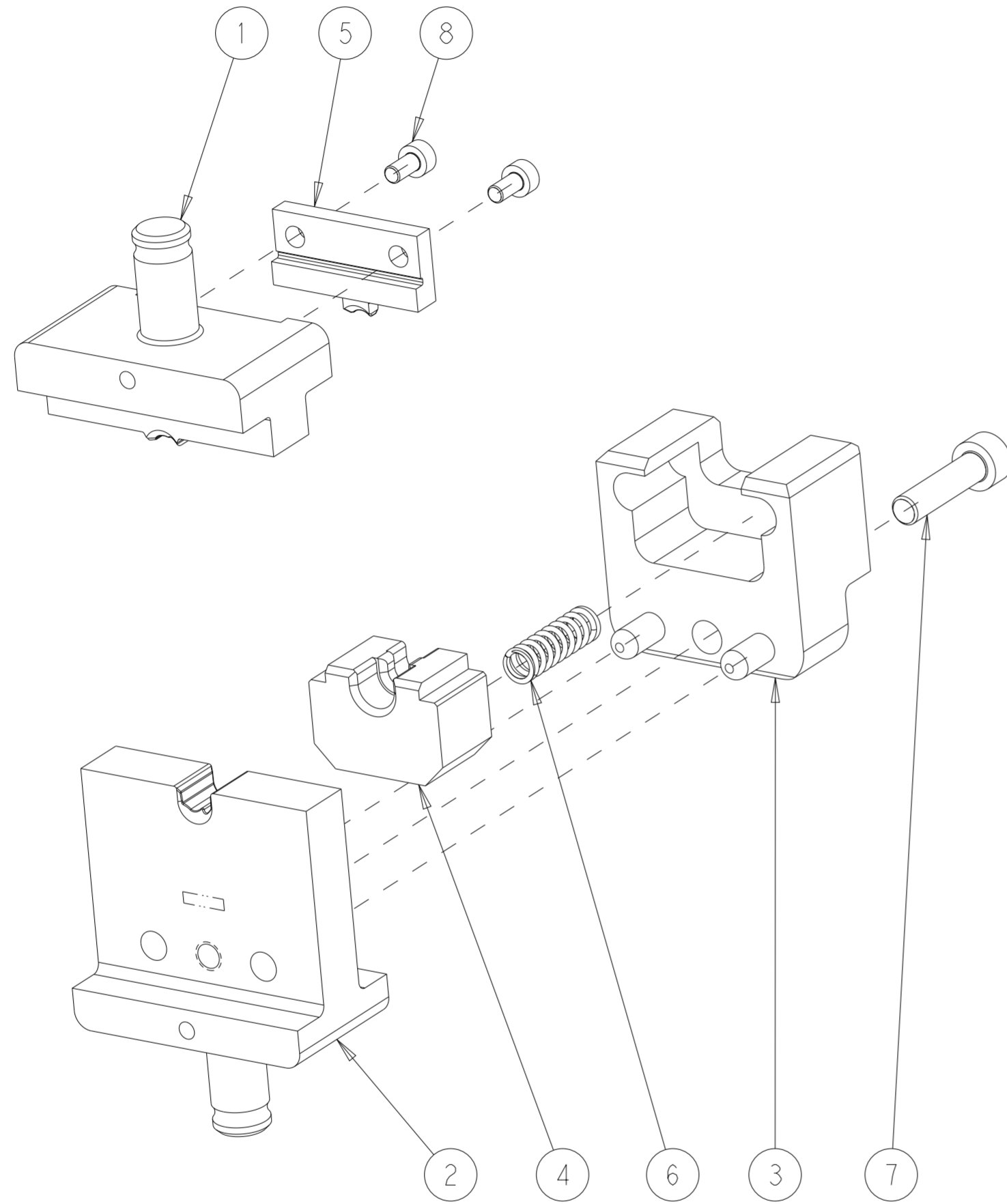


PART NUMBER	REV	FIRST USED	DESCRIPTION
2234181-1	A	-	HV DIE SET
7-2234181-7	A	-	CRIMP TOOLING KIT
9-2234181-1	A	-	HV DIE SET WITH DIE HOLDER

REVISIONS					
P	LTR	DESCRIPTION	DATE	DWN	APVD
	A	RELEASED	19OCT2020	LG	TE
	A1	ECR-21-005695	21MAY2021	LG	TE
	A2	ECR-21-113826	06SEP2021	LS	TE

TERMINAL NAME	PIN CONTACT, DIA2.8, PE		
TE TERMINAL PART NUMBER(S)	2293267-3	2-2293267-3	4-2293267-3
APPLICATION SPECIFICATION	114-94439	114-94574	114-94603
REFERENCE DRAWING	-		
USED ON	2305470-1	2326378-1	
INSTRUCTION SHEET	408-35078		

CABLE SUPPLIER/ SPECIFICATION	CABLE SIZE	CRIMP HEIGHT	CRIMP HEIGHT REFERENCE SETTING
COROPLAST/FHLR2GCB2G GEBAUER&GRILLER/FLYKW6.0(0.2) COFICAB / FHL2X/T4	6mm ²	3.7 ± 0.1	F2



(1:1)

1	-	-	2305470-1	HV MODULAR DIE HOLDER WITH FINE ADJUST	100
2	-	2	18023-2	SCR, SKT HD CAP M3 X 6.0	8
1	-	1	2-18023-1	SCR, SKT HD CAP M5 X 20.0	7
1	-	1	23470-8	SPRING, COMPRESSION	6
1	-	1	2326331-8	TONK, TERMINAL	5
1	-	1	2326328-8	SUPPORT, TERMINAL	4
1	-	1	2326327-1	HOUSING, TERMINAL LOCATOR	3
1	1	1	2326298-1	NEST HVM WM	2
1	1	1	2326297-1	INDENTER HVM WM	1
-91	-77	-1	PART NO	DESCRIPTION	ITEM NO

- ⚠️ APPLY "DIE SET PN" PER TEC-115-67-2 IN APPROXIMATE AREA SHOWN.
- ⚠️ IDENTIFY PART NUMBER AND REVISION LETTER PER TEC-115-67-2 IN APPROXIMATE AREA SHOWN.
- ⚠️ IDENTIFY SERIAL NUMBER PER TEC-115-67-2 IN APPROXIMATE AREA SHOWN.
- 4. TORQUE RECOMMENDATIONS PER 101-35000 UNLESS OTHERWISE SPECIFIED.

THIS DRAWING IS A CONTROLLED DOCUMENT.

DWN	J.LI	02 JUL 2019
CHK	Y.YIN	02 JUL 2019
APVD	Y.YIN	02 JUL 2019

STE TE Connectivity

NAME: DIE SET DIA 2.8MM T 6MM2
2.8mm DIA,PIN CONTACT

SIZE	CAGE CODE	DRAWING NO	RESTRICTED TO
A2	00779	C-2234181	-

CUSTOMER ACCESSIBLE PRODUCTION DRAWING SCALE 3:2 SHEET 1 OF 1 REV A2