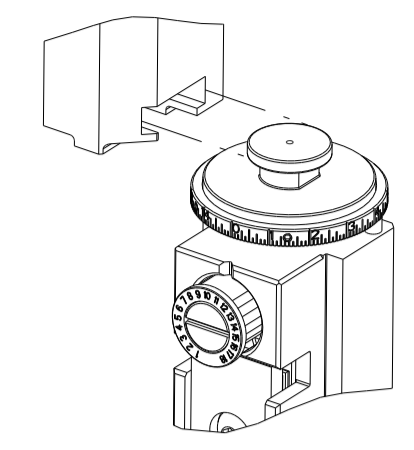


| PART NUMBER | REVISION | DESCRIPTION | FEED TYPE |
|-------------|----------|--|------------|
| 2151450-1 | D | FINE CRIMP HEIGHT ADJUST | MECHANICAL |
| 2151450-2 | D | FINE CRIMP HEIGHT ADJUST | PNEUMATIC |
| 5-2151450-1 | D | SEAL STRIPPER CRIMPER TERMINATING UNIT | MECHANICAL |
| 5-2151450-2 | D | SEAL STRIPPER CRIMPER TERMINATING UNIT | PNEUMATIC |
| 7-2151450-1 | D | MECHANICAL AND CRIMP TOOLING KIT | MECHANICAL |
| 7-2151450-2 | D | PNEUMATIC AND CRIMP TOOLING KIT | PNEUMATIC |
| 7-2151450-7 | A | CRIMP TOOLING KIT | - |

ATLANTIC VERSION TERMINATOR INTERFACE ADAPTER



| APPLICATOR DATA | | |
|--------------------------------------|----------------|------|
| CRIMP | SIZE | TYPE |
| WIRE | 2.79 mm [.110] | F |
| INSUL | 3.56 mm [.140] | OV |
| APPLICATOR INSTRUCTIONS 408-35042 | | |

| TERMINAL DATA: TE TERMINAL | | TE CRIMP SPECIFICATION | |
|--|-------------|------------------------------|-------------|
| TERMINAL NAME: 2.8mm FASTIN FASTON TAB | | | |
| WIRE STRIP LENGTH | | INSULATION DIAMETER RANGE | |
| 5.00-5.60 mm [.197-.220 IN] | | Ø1.80-2.90 mm [.071-.114 IN] | |
| TERMINAL APPLICATION SPECIFICATION | 114-18014 | | |
| TERMINALS APPLIED | | | |
| TE TERMINAL | TE TERMINAL | TE TERMINAL | TE TERMINAL |
| 928781-1 | 928781-2 | 928781-4 | 928781-5 |

| WIRE SIZE | CRIMP HEIGHT mm [INCH] | CRIMP HEIGHT REFERENCE SETTING |
|-----------|----------------------------|--------------------------------|
| 2.50mm2 | 1.97+/-0.05 [.078+/- .002] | 6.0 |
| 2.00mm2 | 1.83+/-0.05 [.072+/- .002] | 7.5 |
| 1.50mm2 | 1.69+/-0.05 [.067+/- .002] | 9.0 |

- 1. RECOMMENDED SPARE PARTS
- 2. REFER TO SUPPLIED INSTRUCTION SHEET FOR CLEANING, LUBRICATION AND STORAGE OF APPLICATOR.
- 3. APPLY PART NUMBER 2-23419-6 LOCTITE TO THREADS OF ITEM 242.
- 4. CRIMP HEIGHT REFERENCE SETTING WAS THE SETTING USED WHEN THE APPLICATOR WAS QUALIFIED AT THE FACTORY. ADJUSTMENT MAY BE NECESSARY WHEN RUNNING APPLICATOR IN THE FIELD.
- 5. UNLESS SPECIFIED OTHERWISE TORQUE VALUES SHALL BE USED PER DOCUMENT, 101-35000.
- 6. TERMINAL LUBRICANT IS RECOMMENDED.

***WARNING**
 ON INSTALLATION, SET WIRE DISC TO CRIMP HEIGHT REFERENCE SETTING FOR LARGEST WIRE SIZE. CRIMP HEIGHT REFERENCE SETTINGS GREATER THAN THE VALUE SHOWN MAY CAUSE DAMAGE TO THE CRIMP TOOLING, REFER TO THE INSTRUCTION SHEET FOR PROPER SETUP AND ADJUSTMENTS.

ATLANTIC VERSION
 Shown on sheets 1 of 4 & 2 of 4
 (Pacific version shown on sheets 3 of 4 & 4 of 4)

| LOC | DIST | REVISIONS | | | | | |
|-----|------|-----------|-----|---------------|-----------|------|------|
| A | 66 | P | LTN | DESCRIPTION | DATE | OWN | APVD |
| | | A | | RELEASE | 02JUL2012 | L. Z | S. X |
| | | B | | ECR-16-014986 | 21OCT2016 | MEH | CT |
| | | C | | ECR-18-008505 | 04JUN2018 | KH | TE |
| | | D | | ECR-21-124925 | 25JAN2022 | TB | TE |

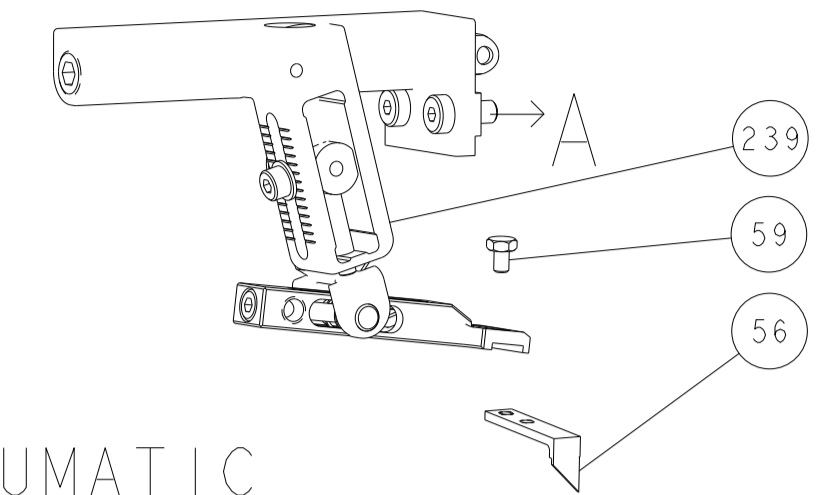
| | | | | | | | | | |
|---|-----|-----|-----|-----|-----|-----|-------------|-------------------------------------|-----|
| - | 1 | 1 | 1 | 1 | 1 | 1 | 1803945-4 | TONKER | 300 |
| - | 1 | 1 | 1 | 1 | 1 | 1 | 22278-9 | SPRING, COMPRESSION | 299 |
| - | 2 | 2 | 2 | 2 | 2 | 2 | 4-18032-3 | SCR, SET, FLT PNT, M3 X 6.0 | 298 |
| - | 1 | 1 | 1 | 1 | 1 | 1 | 1803944-1 | SPACER, TONKER | 297 |
| - | - | - | 1 | 1 | - | - | 2-1803583-1 | APPLICATOR BASIC ASSEMBLY, SF | 292 |
| - | 1 | - | 1 | - | 1 | - | 2119641-1 | FEED CAM, AIR FEED | 248 |
| - | 1 | 1 | 1 | 1 | 1 | 1 | 2119082-9 | CAM, SNAIL, INSULATION ADJUSTMENT | 244 |
| - | 1 | 1 | 1 | 1 | 1 | 1 | 2079764-1 | WASHER, WAVE SPRING, CREST-TO-CREST | 243 |
| - | 1 | 1 | 1 | 1 | 1 | 1 | 2119083-1 | RETAINER, INSULATION DIAL | 242 |
| - | 1 | 1 | 1 | 1 | 1 | 1 | 7-18023-7 | SCR, SKT HD CAP M3 X 4.0 | 241 |
| - | - | 1 | - | 1 | - | 1 | 2119580-1 | MECHANICAL FEED ASSEMBLY | 239 |
| - | 1 | - | 1 | - | 1 | - | 2844940-1 | AIR FEED MODULE | 238 |
| - | REF | REF | REF | REF | REF | REF | 994970-2 | COUNTER, MAGNETIC | 164 |
| - | 1 | 1 | 1 | 1 | 1 | 1 | 2119955-1 | ASSY, LUBRICATOR, SIDE FEED | 113 |
| - | 1 | 1 | 1 | 1 | 1 | 1 | 2844908-1 | SCREW, LOCKING | 99 |
| - | 1 | 1 | 1 | 1 | 1 | 1 | 2844907-1 | POST, LOCKING | 98 |
| - | 1 | 1 | 1 | 1 | 1 | 1 | 455888-5 | SPACER, CRIMPER | 82 |
| - | 1 | 1 | 1 | 1 | 1 | 1 | 1803607-3 | DOCUMENTATION PACKAGE | 71 |
| - | 1 | 1 | 1 | 1 | 1 | 1 | 2119740-1 | TAG, IDENTIFICATION | 67 |
| - | 2 | 2 | 2 | 2 | 2 | 2 | 2168078-1 | SCREW, DRIVE, RH, RoHS, 2 x .188 | 66 |
| - | 1 | 1 | 1 | 1 | 1 | 1 | 2168083-2 | SCR, SKT HD CAP, RoHS, M4 X 8.0 | 60 |
| - | 1 | 1 | 1 | 1 | 1 | 1 | 5-18022-5 | SCR, HEX HD CAP, M4 X 6.0 | 59 |
| - | 1 | 1 | 1 | 1 | 1 | 1 | 1338685-1 | PAWL, FEED | 56 |
| - | 4 | 4 | 4 | 4 | 4 | 4 | 2168083-3 | SCR, SKT HD CAP, RoHS, M4 X 12.0 | 54 |
| - | 2 | 2 | 2 | 2 | 2 | 2 | 2-2168083-6 | SCR, SKT HD CAP, RoHS, M4 X 18 | 53 |
| - | 1 | 2 | 1 | 2 | 1 | 2 | 18023-9 | SCR, SKT HD CAP M4 X 6.0 | 49 |
| - | - | 1 | - | 1 | - | 1 | 2119652-1 | FEED CAM, PRE FEED | 48 |
| - | - | 1 | - | 1 | - | 1 | 2119653-1 | FEED CAM, POST FEED | 47 |
| - | 1 | 1 | - | - | 1 | 1 | 1803583-9 | APPLICATOR BASIC ASSEMBLY, SF | 46 |
| - | 1 | 1 | 1 | 1 | 1 | 1 | 1803515-1 | RAM ASSEMBLY, SF ATLANTIC | 44 |
| - | 1 | 1 | 1 | 1 | 1 | 1 | 1803602-1 | SCR, BHSC, RoHS (M8 X 25) | 41 |
| - | 1 | 1 | 1 | 1 | 1 | 1 | 4-1752356-2 | SUPPORT, TERMINAL | 34 |
| - | 2 | 2 | 2 | 2 | 2 | 2 | 2079383-5 | SCR, BHSC, RoHS (M4 X 20) | 33 |
| - | 2 | 2 | 2 | 2 | 2 | 2 | 3-2844962-0 | SPACER, CYLINDRICAL, STRIP GUIDE | 30 |
| - | 1 | 1 | 1 | 1 | 1 | 1 | 2844992-1 | ASSEMBLY, STRIP GUIDE | 29 |
| - | 1 | 1 | 1 | 1 | 1 | 1 | 1-455888-0 | SPACER, CRIMPER | 28 |
| - | 1 | 1 | 1 | 1 | 1 | 1 | 1320928-2 | STRIP GUIDE | 24 |
| - | 1 | 1 | - | - | 1 | 1 | 2168083-2 | SCR, SKT HD CAP, RoHS, M4 X 8.0 | 21 |
| - | 2 | 2 | 1 | 1 | 2 | 2 | 1-18028-2 | WASHER, FLAT, REG M4 | 20 |
| - | 1 | 1 | - | - | 1 | 1 | 2119533-1 | STRIPPER, SIDE FEED | 19 |
| - | 1 | 1 | 1 | 1 | 1 | 1 | 2119806-1 | INSERT, SHEAR | 13 |
| - | 1 | 1 | 1 | 1 | 1 | 1 | 3-22280-3 | SPRING, COMPRESSION | 12 |
| - | 1 | 1 | 1 | 1 | 1 | 1 | 1-356885-4 | STOP, SHEAR | 11 |
| - | 1 | 1 | 1 | 1 | 1 | 1 | 2119805-1 | SHEAR HOLDER, FRONT | 10 |
| - | 1 | 1 | 1 | 1 | 1 | 1 | 1803095-6 | FLOATING SHEAR, FRONT | 9 |
| - | 1 | 2 | 2 | 1 | 1 | 1 | 1-1333207-1 | ANVIL, COMBINATION .110 | 8 |
| - | 1 | 1 | 1 | 1 | 1 | 1 | 1-240641-4 | SPACER | 7 |
| - | - | - | - | - | - | - | - | - | 6 |
| - | 1 | 1 | 1 | 1 | 1 | 1 | 1-2119757-0 | DEPRESSOR, SHEAR | 5 |
| - | 1 | 1 | 1 | 1 | 1 | 1 | 2-238011-2 | BLOCK, CRIMPER SPACER | 4 |
| - | 1 | 2 | 2 | 1 | 1 | 1 | 1-2119785-1 | CRIMPER, INSULATION OVERLAP PREMIUM | 3 |
| - | 1 | 1 | 1 | 1 | 1 | 1 | 1-455888-0 | SPACER, CRIMPER | 2 |
| - | 1 | 2 | 2 | 1 | 1 | 1 | 456408-6 | CRIMPER, WIRE PREMIUM | 1 |

| ITEM NO | PART NO | DESCRIPTION |
|---------|---------|-------------|
| -77 | -72 | -71 |
| -52 | -51 | -2 |
| -1 | | |

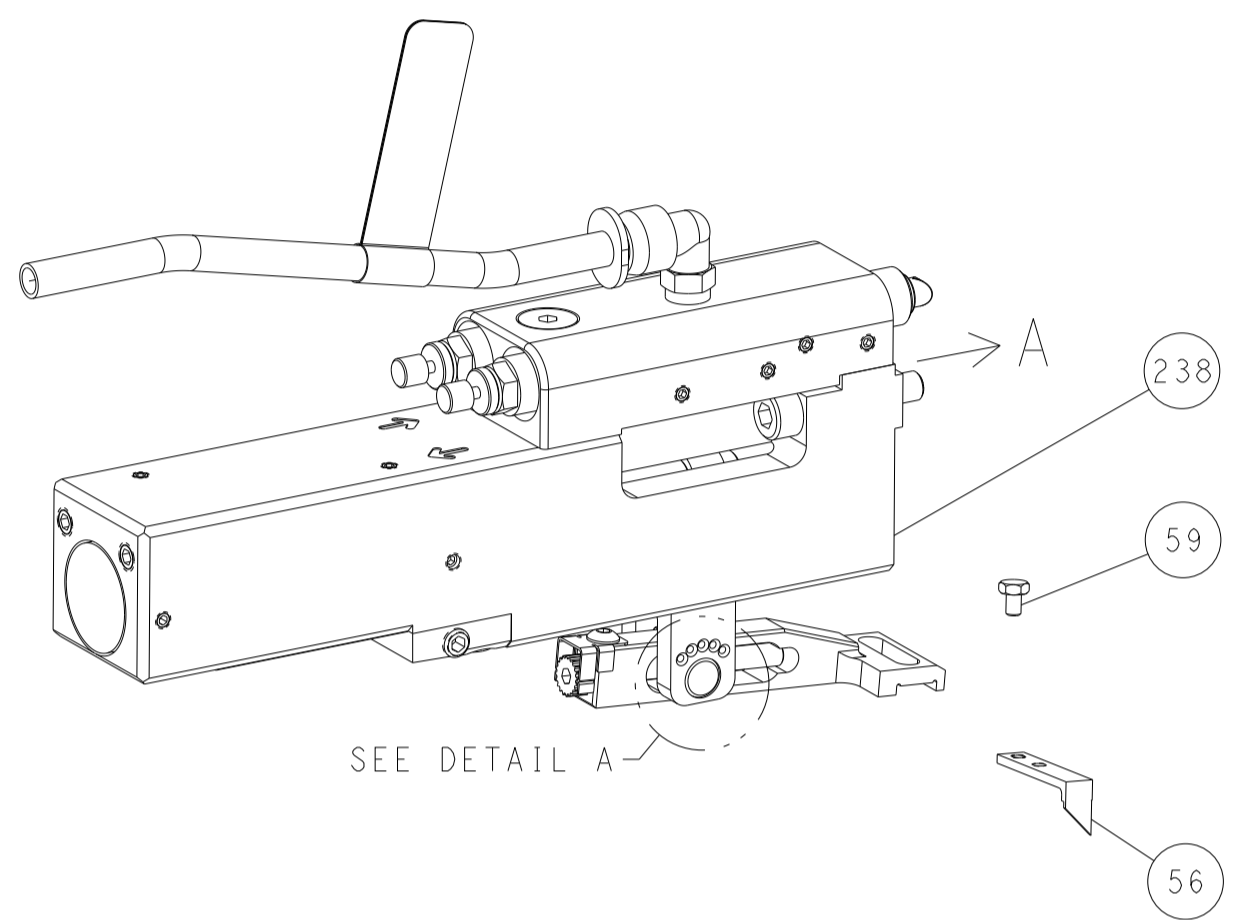
| | | |
|---|--|--|
| THIS DRAWING IS UNPUBLISHED. RELEASED FOR PUBLICATION. ALL RIGHTS RESERVED. | OWN: L. ZHANG 15DEC2011 | TE Connectivity Harrisburg, PA 17105-3608 |
| CHEK: L. ZHANG 15DEC2011 | NAME: Ocean Side Feed Applicator | |
| APVD: S. XI 15DEC2011 | SIZE: A CAGE CODE: 00779 DRAWING NO: 2151450 | |
| DIMENSIONS: mm | RESTRICTED TO: - | |
| TOLERANCES UNLESS OTHERWISE SPECIFIED: | WEIGHT: - | CUSTOMER ACCESSIBLE PRODUCTION DRAWING |
| 0 PLC ± | SCALE: 1:2 | SHEET 1 OF 4 |
| 1 PLC ± | REV: D | |
| 2 PLC ± | | |
| 3 PLC ± | | |
| 4 PLC ± | | |
| ANGLES FINISH ± | | |

| LOC | DIST | REVISIONS | | | | | |
|-----|------|-----------|-----|-------------|------|-----|------|
| A | 66 | P | LTN | DESCRIPTION | DATE | DWN | APVD |
| | | - | | SEE SHEET 1 | | | |

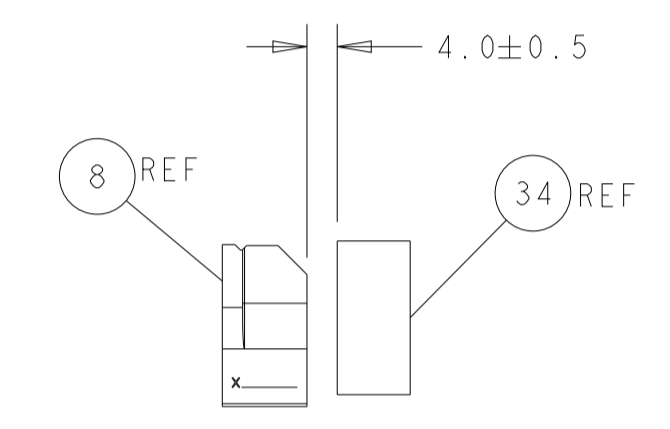
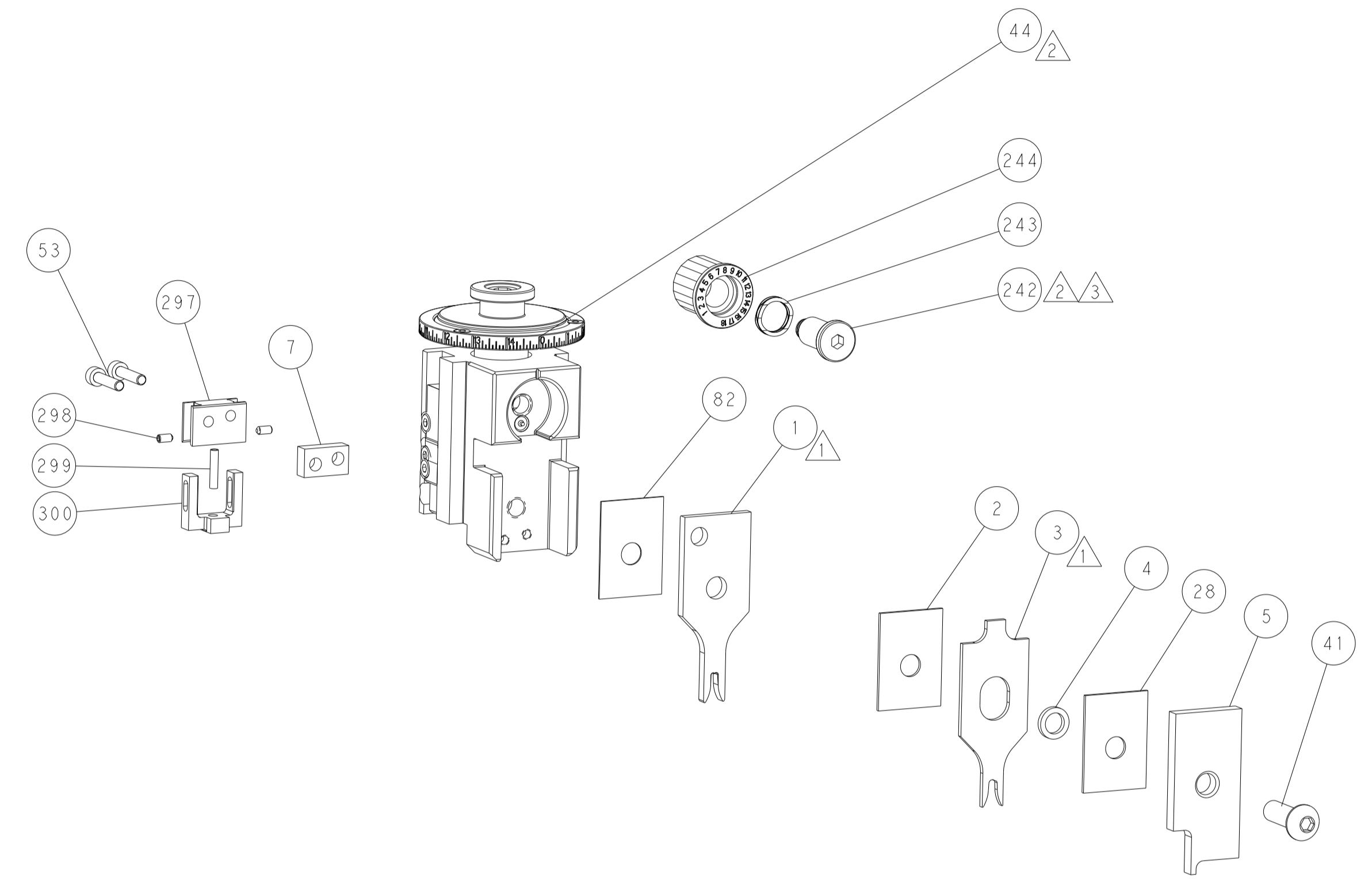
FEED TYPE MECHANICAL



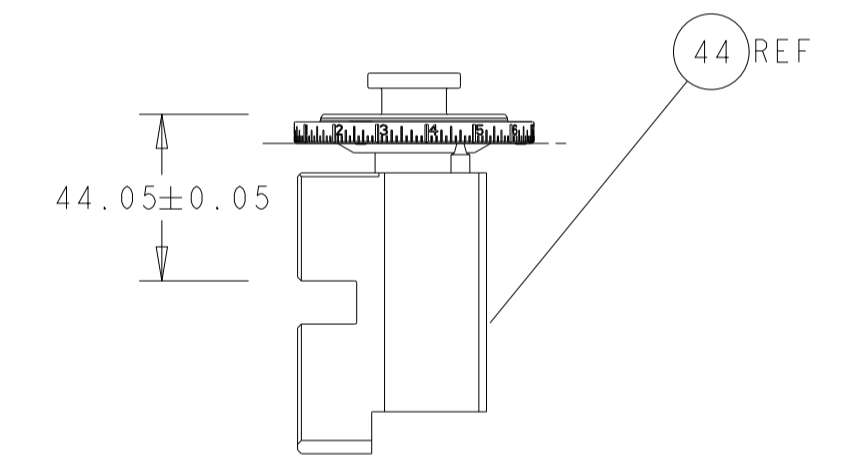
PNEUMATIC



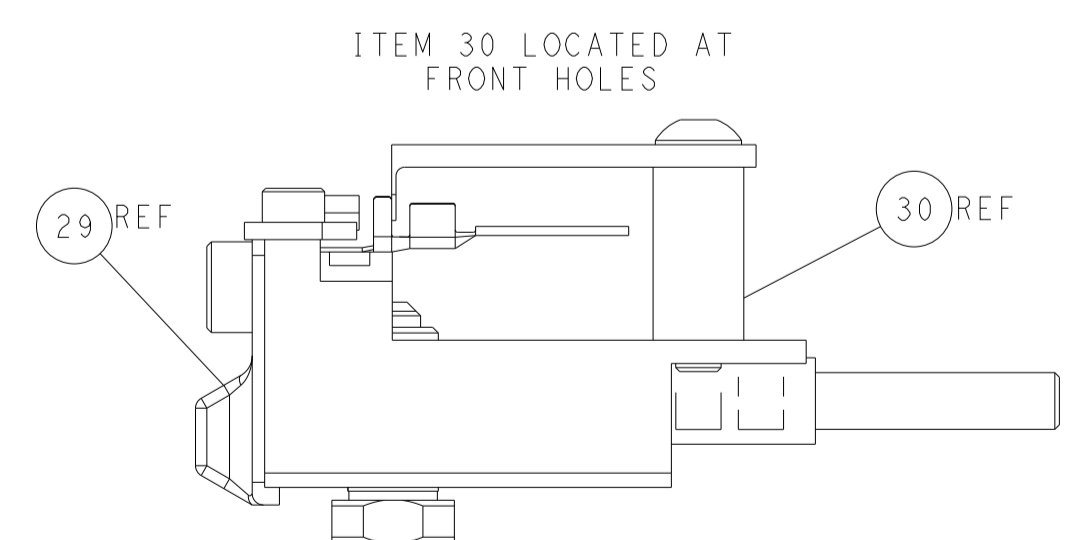
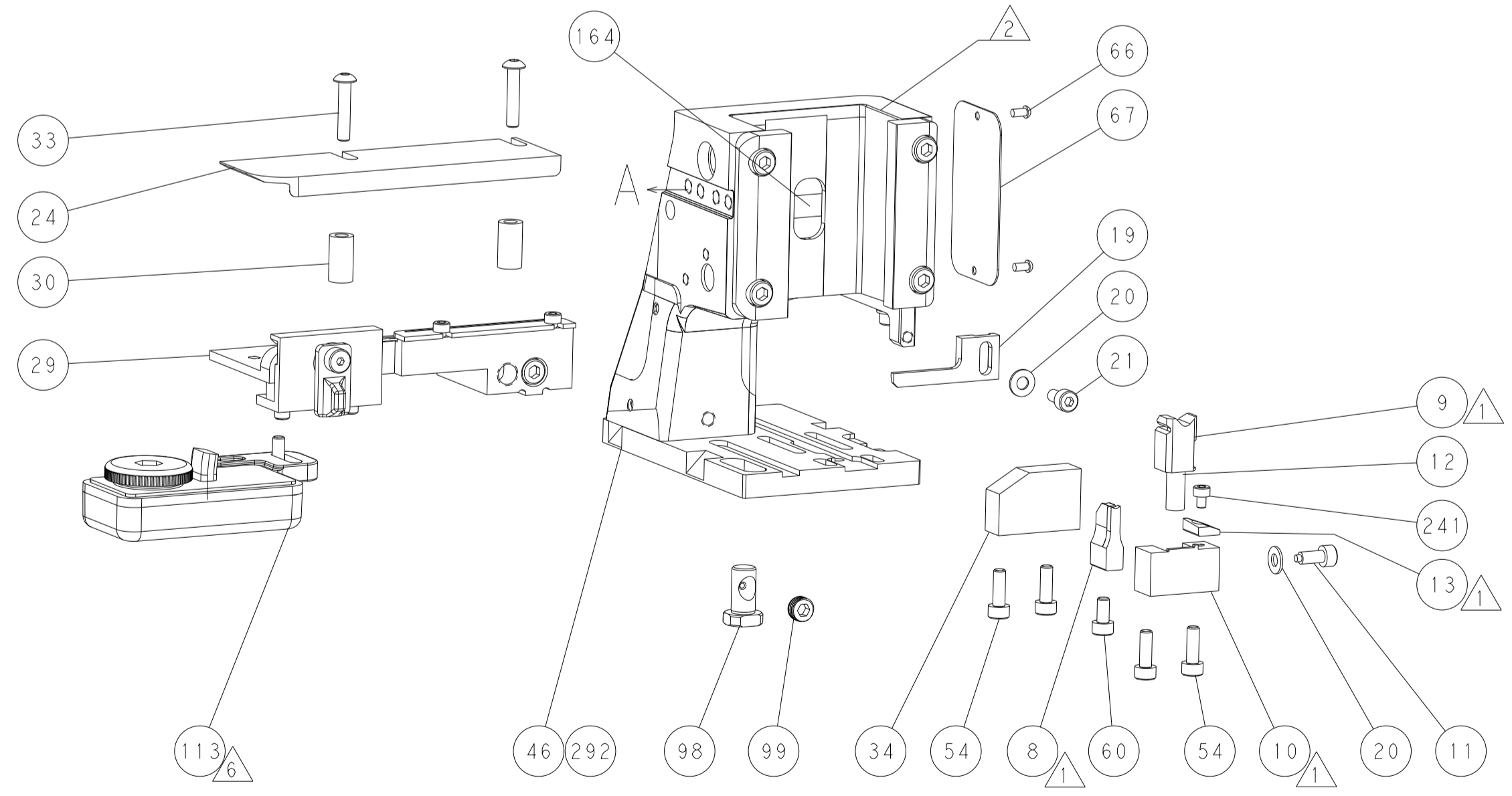
FEED SPRING SETTING POSITION (SHOWN FROM REAR SIDE)



TERMINAL SUPPORT LOCATION

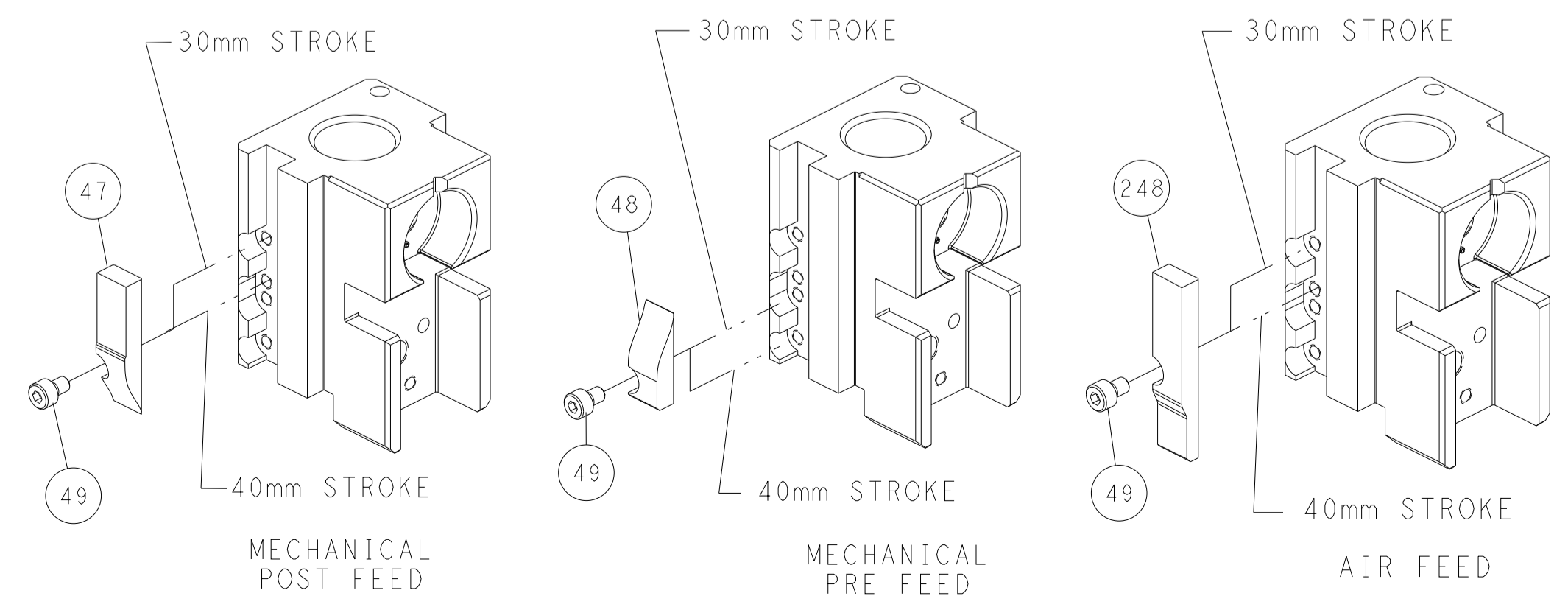


RAM SET-UP



ITEM 30 LOCATED AT FRONT HOLES

CAM POSITIONS

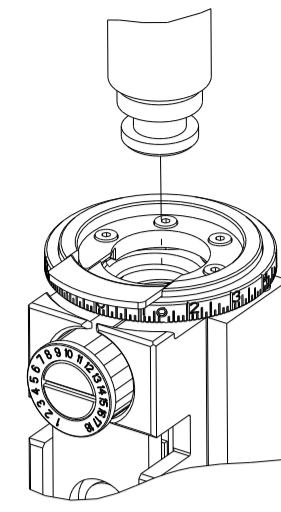


ATLANTIC VERSION
 Shown on sheets 1 of 4 & 2 of 4
 (Pacific version shown on sheets 3 of 4 & 4 of 4)

| | | | |
|--|--|---|--|
| <small>THIS DRAWING IS UNPUBLISHED. RELEASED FOR PUBLICATION. ALL RIGHTS RESERVED. © 2000 BY TYCO ELECTRONICS CORPORATION. THIS DRAWING IS UNPUBLISHED. RELEASED FOR PUBLICATION. ALL RIGHTS RESERVED. © 2000 BY TYCO ELECTRONICS CORPORATION. THIS DRAWING IS UNPUBLISHED. RELEASED FOR PUBLICATION. ALL RIGHTS RESERVED. © 2000 BY TYCO ELECTRONICS CORPORATION.</small> | | DWN L. ZHANG 15DEC2011 CHK L. ZHANG 15DEC2011 APVD S. XI 15DEC2011 | TE Connectivity Harrisburg, PA 17105-3608 |
| DIMENSIONS: mm TOLERANCES UNLESS OTHERWISE SPECIFIED: 0 PLC ± 1 PLC ± 2 PLC ± 3 PLC ± 4 PLC ± ANGLES ± FINISH | | NAME Ocean Side Feed Applicator PRODUCT SPEC APPLICATION SPEC SIZE CAGE CODE DRAWING NO. RESTRICTED TO A1 00779 ©=2151450 | WEIGHT CUSTOMER ACCESSIBLE PRODUCTION DRAWING SCALE 1:2 SHEET 2 OF 4 REV D |

| PART NUMBER | REVISION | DESCRIPTION | FEED TYPE |
|-------------|----------|--------------------------|------------|
| 2-2151450-1 | D | FINE CRIMP HEIGHT ADJUST | MECHANICAL |
| 2-2151450-2 | D | FINE CRIMP HEIGHT ADJUST | PNEUMATIC |
| 7-2151450-7 | A | CRIMP TOOLING KIT | - |

PACIFIC VERSION TERMINATOR
INTERFACE ADAPTER



| APPLICATOR DATA | | |
|-----------------|----------------|------|
| CRIMP | SIZE | TYPE |
| WIRE | 2.79 mm [.110] | F |
| INSUL | 3.56 mm [.140] | OV |

APPLICATOR INSTRUCTIONS
408-35042

| TERMINAL DATA: TE TERMINAL | | TE CRIMP SPECIFICATION | |
|--|-------------|-------------------------------|-------------|
| TERMINAL NAME: 2.8mm FASTIN FASTON TAB | | | |
| WIRE STRIP LENGTH | | INSULATION DIAMETER RANGE | |
| 5.00-5.60 mm [1.97-.220 IN] | | ∅1.80-2.90 mm [0.071-.114 IN] | |
| TERMINAL APPLICATION SPECIFICATION | 114-18014 | - | - |
| TERMINALS APPLIED Δ | | | |
| TE TERMINAL | TE TERMINAL | TE TERMINAL | TE TERMINAL |
| 928781-1 | 928781-2 | 928781-4 | 928781-5 |

| WIRE SIZE | CRIMP HEIGHT mm [INCH] | CRIMP HEIGHT REFERENCE SETTING Δ |
|-----------|-----------------------------|---|
| 2.50mm2 | 1.97+/-0.05 [0.078+/-0.002] | 6.0 |
| 2.00mm2 | 1.83+/-0.05 [0.072+/-0.002] | 7.5 |
| 1.50mm2 | 1.69+/-0.05 [0.067+/-0.002] | 9.0 |

- Δ RECOMMENDED SPARE PARTS
- Δ REFER TO SUPPLIED INSTRUCTION SHEET FOR CLEANING, LUBRICATION AND STORAGE OF APPLICATOR.
- Δ APPLY PART NUMBER 2-23419-6 LOCTITE TO THREADS OF ITEM 242.
- Δ CRIMP HEIGHT REFERENCE SETTING WAS THE SETTING USED WHEN THE APPLICATOR WAS QUALIFIED AT THE FACTORY. ADJUSTMENT MAY BE NECESSARY WHEN RUNNING APPLICATOR IN THE FIELD.
- 5. UNLESS SPECIFIED OTHERWISE TORQUE VALUES SHALL BE USED PER DOCUMENT, 101-35000.
- Δ TERMINAL LUBRICANT IS RECOMMENDED.

***WARNING**
ON INSTALLATION, SET WIRE DISC TO CRIMP HEIGHT REFERENCE SETTING FOR LARGEST WIRE SIZE. CRIMP HEIGHT REFERENCE SETTINGS GREATER THAN THE VALUE SHOWN MAY CAUSE DAMAGE TO THE CRIMP TOOLING, REFER TO THE INSTRUCTION SHEET FOR PROPER SETUP AND ADJUSTMENTS.

PACIFIC VERSION
Shown on sheets 3 of 4 & 4 of 4
(Atlantic version shown on sheets 1 of 4 & 2 of 4)

| LOC | DIST | REVISIONS | | | | | |
|-----|------|-----------|-----|-------------|------|-----|------|
| A | 66 | P | LTN | DESCRIPTION | DATE | OWN | APVD |
| - | - | - | - | SEE SHEET 1 | - | - | - |

| | | | | | |
|----------|-----|-----|-------------|-------------------------------------|-----|
| - | 1 | 1 | 1803945-4 | TONKER | 300 |
| - | 1 | 1 | 22278-9 | SPRING, COMPRESSION | 299 |
| - | 2 | 2 | 4-18032-3 | SCR, SET, FLT PNT, M3 X 6.0 | 298 |
| - | 1 | 1 | 1803944-1 | SPACER, TONKER | 297 |
| - | 1 | 1 | 2119082-9 | CAM, SNAIL, INSULATION ADJUSTMENT | 244 |
| - | 1 | 1 | 2079764-1 | WASHER, WAVE SPRING, CREST-TO-CREST | 243 |
| Δ | 1 | 1 | 2119083-1 | RETAINER, INSULATION DIAL | 242 |
| - | 1 | 1 | 7-18023-7 | SCR, SKT HD CAP M3 X 4.0 | 241 |
| - | - | 1 | 2119580-1 | MECHANICAL FEED ASSEMBLY | 239 |
| - | 1 | - | 2844940-1 | AIR FEED MODULE | 238 |
| - | REF | REF | 994970-2 | COUNTER, MAGNETIC | 164 |
| - | 1 | - | 2119641-2 | FEED CAM, AIR FEED | 151 |
| - | 1 | 1 | 2168083-8 | SCR, SKT HD CAP, RoHS, M4 X 16 | 144 |
| - | 4 | 4 | 2168083-9 | SCR, SKT HD CAP, RoHS, M4 X 20 | 143 |
| - | - | 1 | 2119653-2 | FEED CAM, POST FEED | 142 |
| - | 1 | 1 | 1-1803583-0 | APPLICATOR BASIC ASSEMBLY, SF | 141 |
| - | 1 | 1 | 1803516-1 | RAM ASSEMBLY, SF PACIFIC | 140 |
| Δ | 1 | 1 | 2119955-1 | ASSY, LUBRICATOR, SIDE FEED | 113 |
| - | 1 | 1 | 2844908-1 | SCREW, LOCKING | 99 |
| - | 1 | 1 | 2844907-1 | POST, LOCKING | 98 |
| - | 1 | 1 | 455888-5 | SPACER, CRIMPER | 82 |
| - | 1 | 1 | 1803607-3 | DOCUMENTATION PACKAGE | 71 |
| - | 1 | 1 | 2119740-1 | TAG, IDENTIFICATION | 67 |
| - | 2 | 2 | 2168078-1 | SCREW, DRIVE, RH, RoHS, 2 x .188 | 66 |
| - | 1 | 1 | 5-18022-5 | SCR, HEX HD CAP, M4 X 6.0 | 59 |
| - | 1 | 1 | 1338685-1 | PAWL, FEED | 56 |
| - | 2 | 2 | 2-2168083-6 | SCR, SKT HD CAP, RoHS, M4 X 18 | 53 |
| - | 1 | 2 | 18023-9 | SCR, SKT HD CAP M4 X 6.0 | 49 |
| - | - | 1 | 2119652-1 | FEED CAM, PRE FEED | 48 |
| - | 1 | 1 | 1803602-1 | SCR, BHSC, RoHS (M8 X 25) | 41 |
| - | 1 | 1 | 4-1752356-2 | SUPPORT, TERMINAL | 34 |
| - | 2 | 2 | 2079383-5 | SCR, BHSC, RoHS (M4 X 20) | 33 |
| - | 2 | 2 | 3-2844962-0 | SPACER, CYLINDRICAL, STRIP GUIDE | 30 |
| - | 1 | 1 | 2844992-1 | ASSEMBLY, STRIP GUIDE | 29 |
| - | 1 | 1 | 1-455888-0 | SPACER, CRIMPER | 28 |
| - | 1 | 1 | 1320928-2 | STRIP GUIDE | 24 |
| - | 1 | 1 | 2168083-2 | SCR, SKT HD CAP, RoHS, M4 X 8.0 | 21 |
| - | 2 | 2 | 1-18028-2 | WASHER, FLAT, REG M4 | 20 |
| - | 1 | 1 | 2119533-1 | STRIPPER, SIDE FEED | 19 |
| Δ | 1 | 1 | 2119806-1 | INSERT, SHEAR | 13 |
| - | 1 | 1 | 3-22280-3 | SPRING, COMPRESSION | 12 |
| - | 1 | 1 | 1-356885-4 | STOP, SHEAR | 11 |
| Δ | 1 | 1 | 2119805-1 | SHEAR HOLDER, FRONT | 10 |
| Δ | 1 | 1 | 1803095-6 | FLOATING SHEAR, FRONT | 9 |
| Δ | 1 | 1 | 1-1333207-1 | ANVIL, COMBINATION .110 | 8 |
| - | 1 | 1 | 1-240641-4 | SPACER | 7 |
| - | - | - | - | - | 6 |
| - | 1 | 1 | 1-2119757-0 | DEPRESSOR, SHEAR | 5 |
| - | 1 | 1 | 2-238011-2 | BLOCK, CRIMPER SPACER | 4 |
| Δ | 1 | 1 | 1-2119785-1 | CRIMPER, INSULATION OVERLAP PREMIUM | 3 |
| - | 1 | 1 | 1-455888-0 | SPACER, CRIMPER | 2 |
| Δ | 1 | 1 | 456408-6 | CRIMPER, WIRE PREMIUM | 1 |

| DIMENSIONS: | | TOLERANCES UNLESS OTHERWISE SPECIFIED: | | MATERIAL: | |
|-------------|----------|--|---------|-----------|---------|
| mm | 0 PLC ± | 1 PLC ± | 2 PLC ± | 3 PLC ± | 4 PLC ± |
| | ANGLES ± | FINISH | | | |

| ITEM NO | DESCRIPTION | ITEM NO |
|---------|-------------|---------|
| -77 | -22 | -21 |

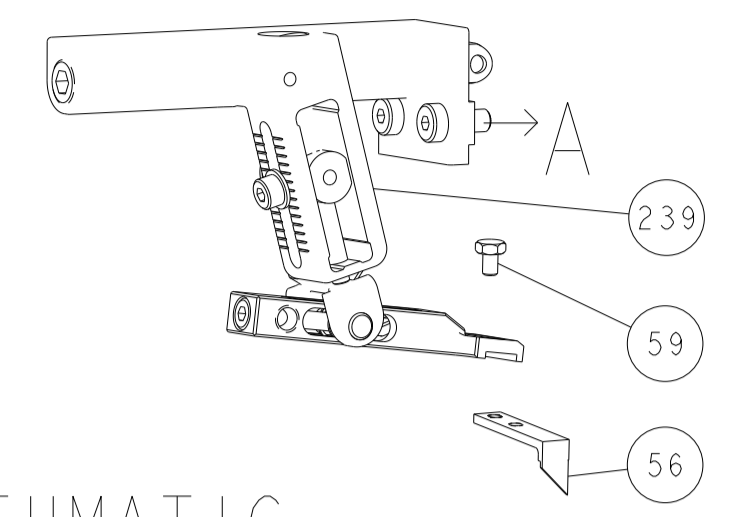
| | | |
|------|----------|-----------|
| OWN | L. ZHANG | 15DEC2011 |
| CHK | L. ZHANG | 15DEC2011 |
| APVD | S. XI | 15DEC2011 |

| | | | |
|------|----------------------------|------------|---------------|
| NAME | Ocean Side Feed Applicator | | |
| SIZE | CAGE CODE | DRAWING NO | RESTRICTED TO |
| A1 | 00779 | 2151450 | D |

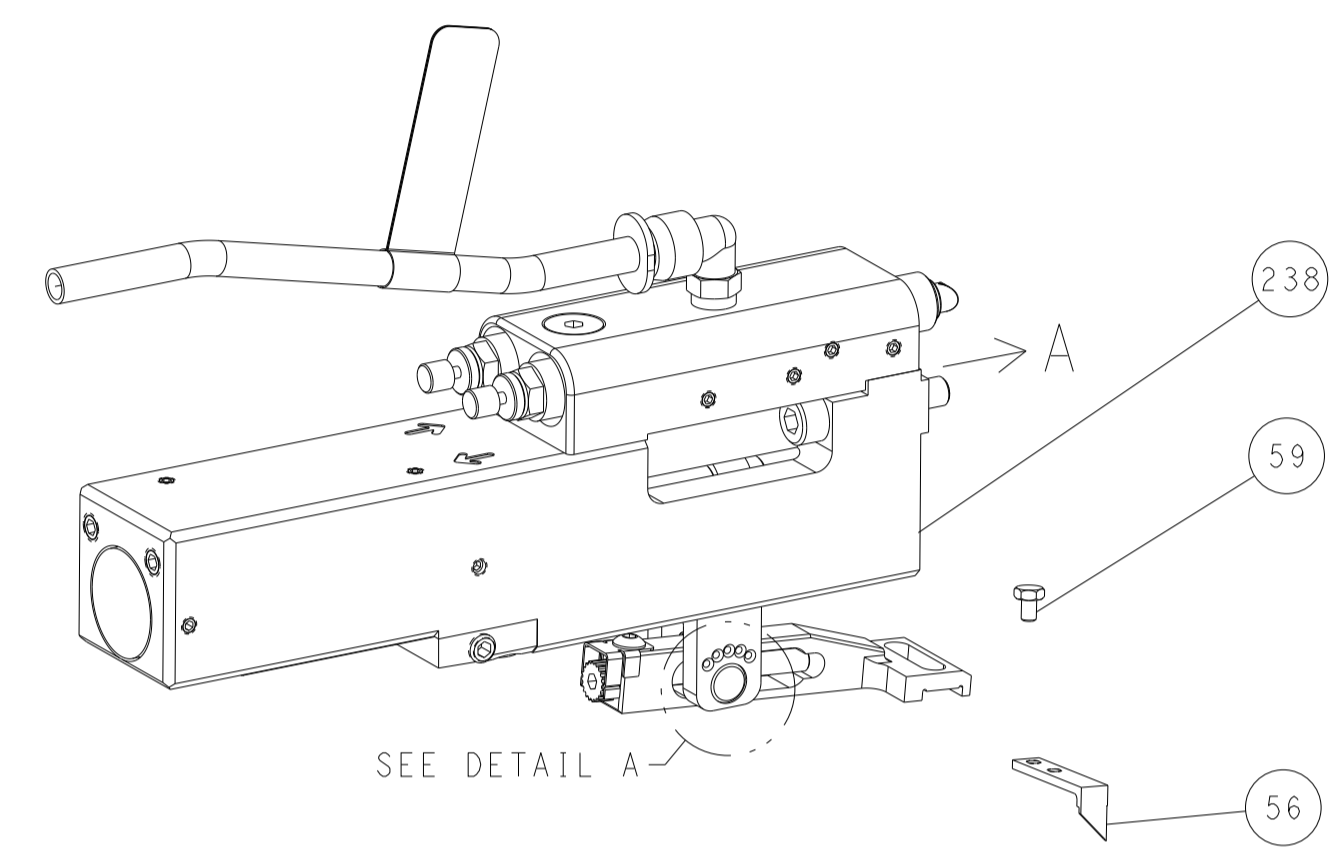
CUSTOMER ACCESSIBLE PRODUCTION DRAWING SCALE 1:2 SHEET 3 OF 4 REV D

| REVISONS | | DATE | OWN | APVD |
|----------|------|-------------|-----|------|
| LOC | DIST | | | |
| A | 66 | | | |
| P | LTM | DESCRIPTION | | |
| - | - | SEE SHEET 1 | - | - |

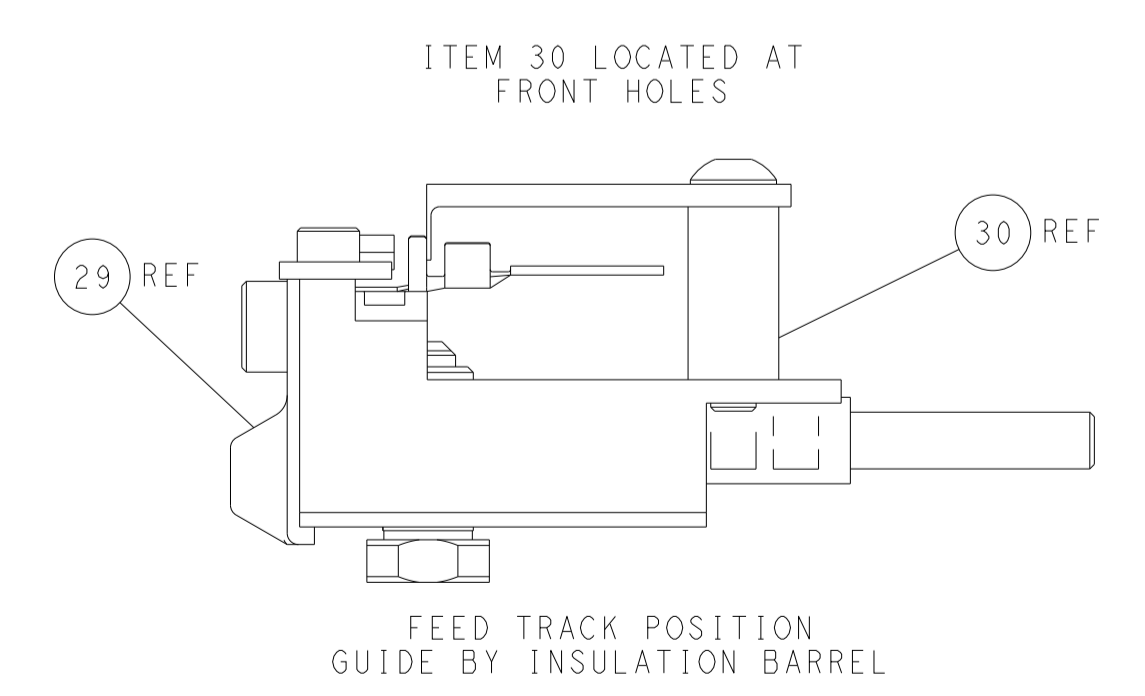
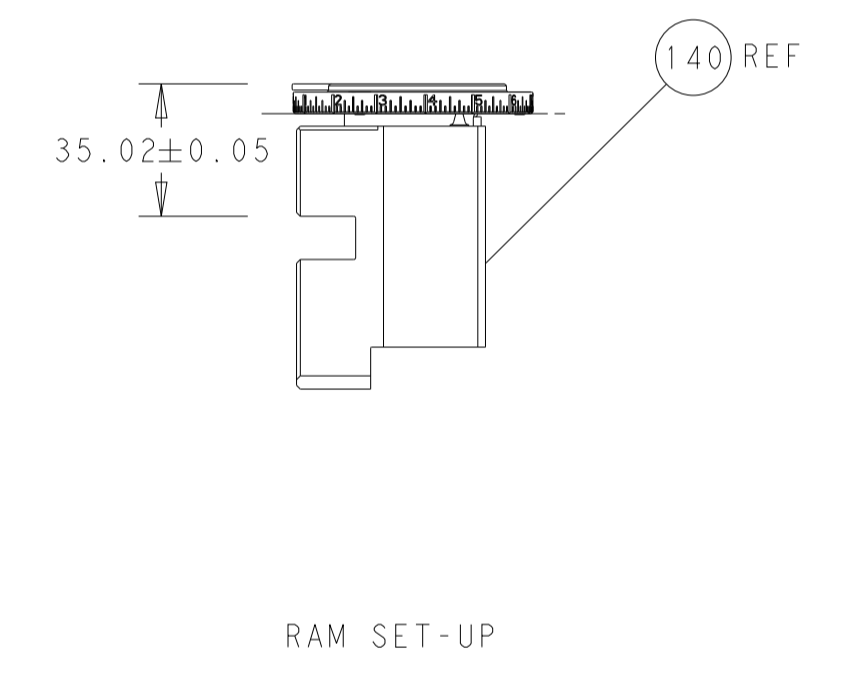
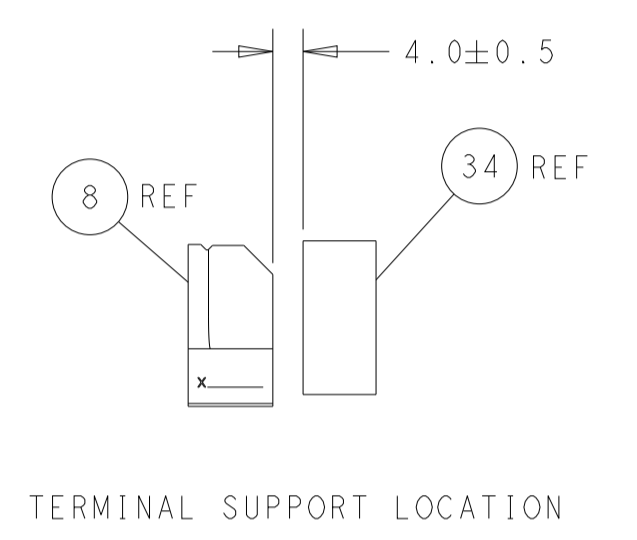
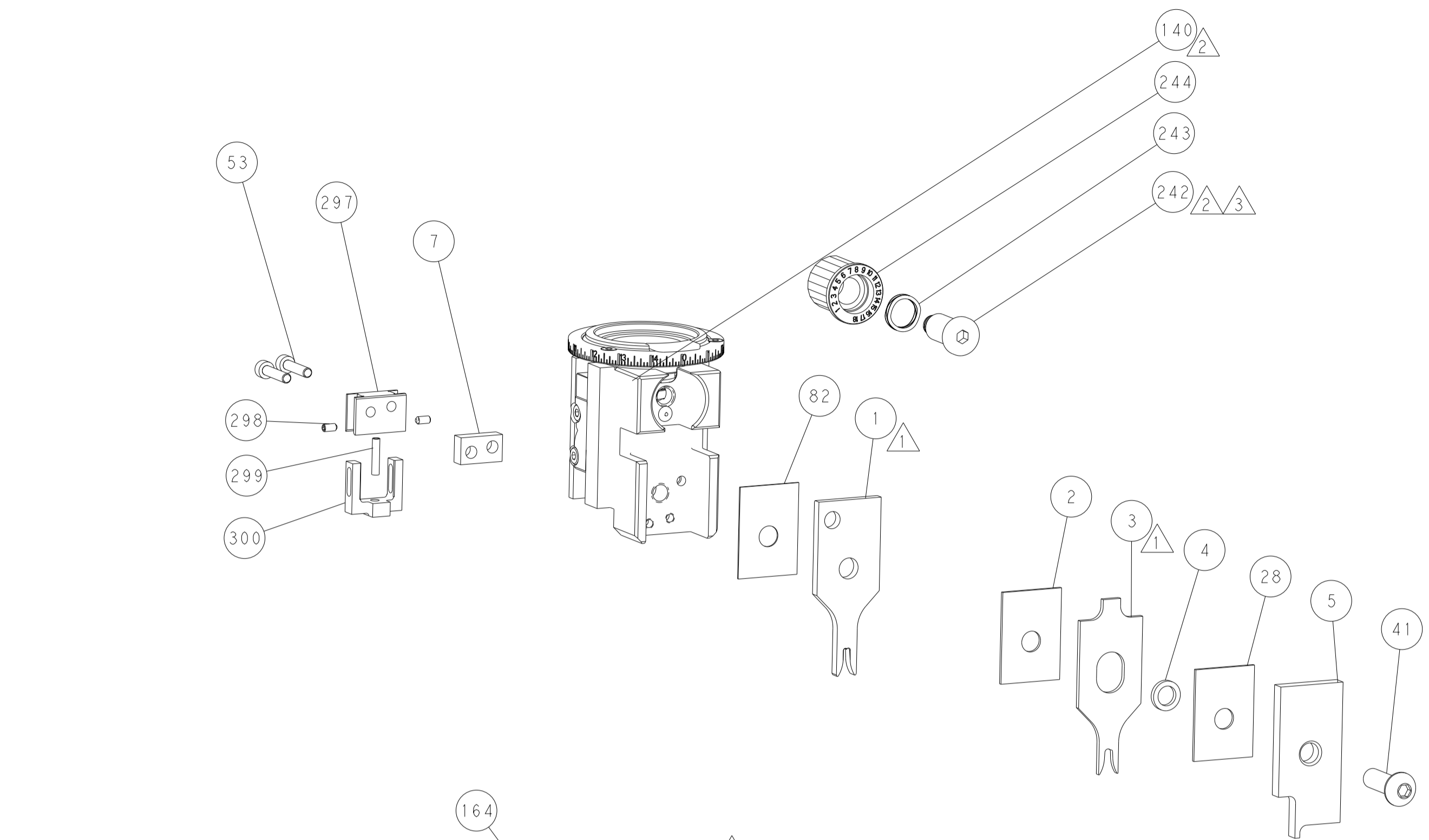
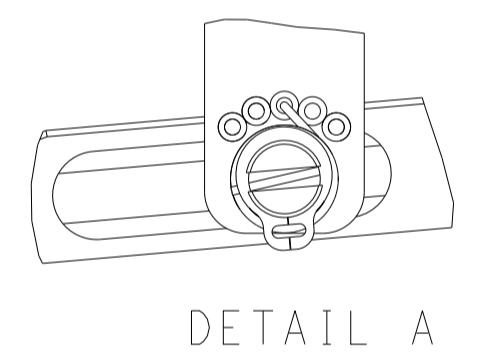
FEED TYPE MECHANICAL



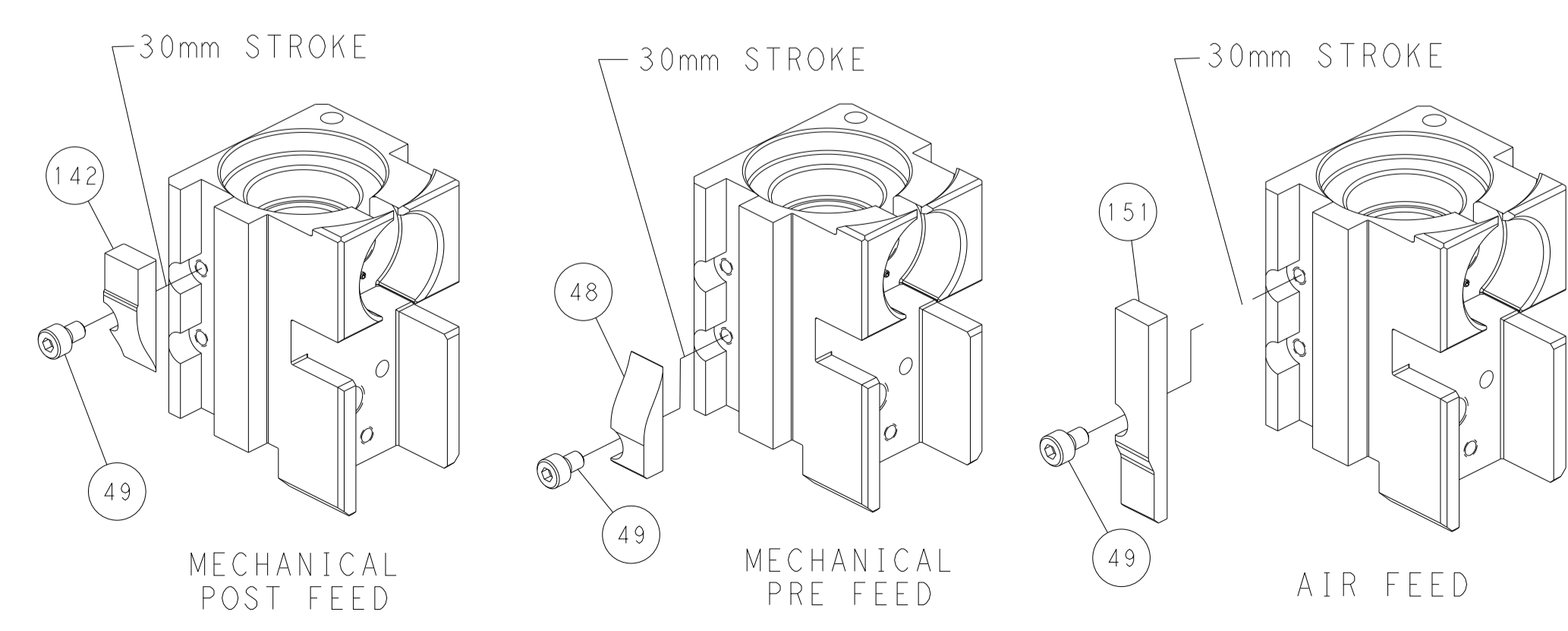
PNEUMATIC



FEED SPRING SETTING POSITION (SHOWN FROM REAR SIDE)



CAM POSITIONS



PACIFIC VERSION
 Shown on sheets 3 of 4 & 4 of 4
 (Atlantic version shown on sheets 1 of 4 & 2 of 4)

| | | | | | | |
|-------------|--------|--|--|--|-----------|--|
| DIMENSIONS: | | TOLERANCES UNLESS OTHERWISE SPECIFIED: | | OWN | 15DEC2011 | TE Connectivity Harrisburg, PA 17105-3608 |
| mm | 0 PLC | ± | | CHK | L. ZHANG | |
| | 1 PLC | ± | | APVD | S. XI | |
| | 2 PLC | ± | | PRODUCT SPEC | 15DEC2011 | |
| | 3 PLC | ± | | APPLICATION SPEC | | NAME |
| | 4 PLC | ± | | | | Ocean Side Feed Applicator |
| | ANGLES | ± | | SIZE | CAGE CODE | DRAWING NO |
| | FINISH | ± | | RESTRICTED TO | | |
| MATERIAL | | | | WEIGHT | A1 | 00779 |
| | | | | CUSTOMER ACCESSIBLE PRODUCTION DRAWING | SCALE | 1:2 |
| | | | | | SHEET | 4 |
| | | | | | OF | 4 |
| | | | | | REV | D |