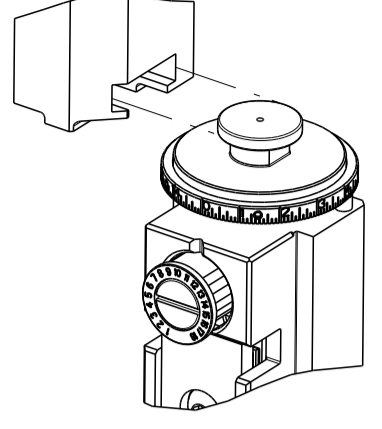


Table with columns: PART NUMBER, REVISION, DESCRIPTION, FEED TYPE. Rows include 2151015-1, 2151015-2, 5-2151015-1, etc.

ATLANTIC VERSION TERMINATOR INTERFACE ADAPTER



APPLICATOR DATA table with columns: CRIMP, SIZE, TYPE. Includes rows for WIRE and INSUL.

TERMINAL DATA: MOLEX TERMINAL MOLEX CRIMP SPECIFICATION. Includes WIRE STRIP LENGTH and INSULATION DIAMETER RANGE.

TERMINAL DATA: MOLEX TERMINAL CMOLEX CRIMP SPECIFICATION. Includes WIRE STRIP LENGTH and INSULATION DIAMETER RANGE.

TERMINALS APPLIED table with columns: TE TERMINAL, MOLEX TERMINAL. Lists terminal part numbers and Molex terminal codes.

TERMINALS APPLIED table with columns: TE TERMINAL, MOLEX TERMINAL, TE TERMINAL, MOLEX TERMINAL. Lists terminal part numbers and Molex terminal codes.

Table with columns: WIRE SIZE, CRIMP HEIGHT mm [INCH], CRIMP HEIGHT REFERENCE SETTING. Lists wire sizes and crimp height requirements.

Table with columns: WIRE SIZE, CRIMP HEIGHT mm [INCH], CRIMP HEIGHT REFERENCE SETTING. Lists wire sizes and crimp height requirements.

- RECOMMENDED SPARE PARTS
REFER TO SUPPLIED INSTRUCTION SHEET FOR CLEANING, LUBRICATION AND STORAGE OF APPLICATOR.
APPLY PART NUMBER 2-23419-6 LOCTITE TO THREADS OF ITEM 242.
CRIMP HEIGHT REFERENCE SETTING WAS THE SETTING USED WHEN THE APPLICATOR WAS QUALIFIED AT THE FACTORY...

*WARNING ON INSTALLATION, SET WIRE DISC TO CRIMP HEIGHT REFERENCE SETTING FOR LARGEST WIRE SIZE. CRIMP HEIGHT REFERENCE SETTINGS GREATER THAN THE VALUE SHOWN MAY CAUSE DAMAGE TO THE CRIMP TOOLING, REFER TO THE INSTRUCTION SHEET FOR PROPER SETUP AND ADJUSTMENTS.

ATLANTIC VERSION Shown on sheets 1 of 4 & 2 of 4 (Pacific version shown on sheets 3 of 4 & 4 of 4)

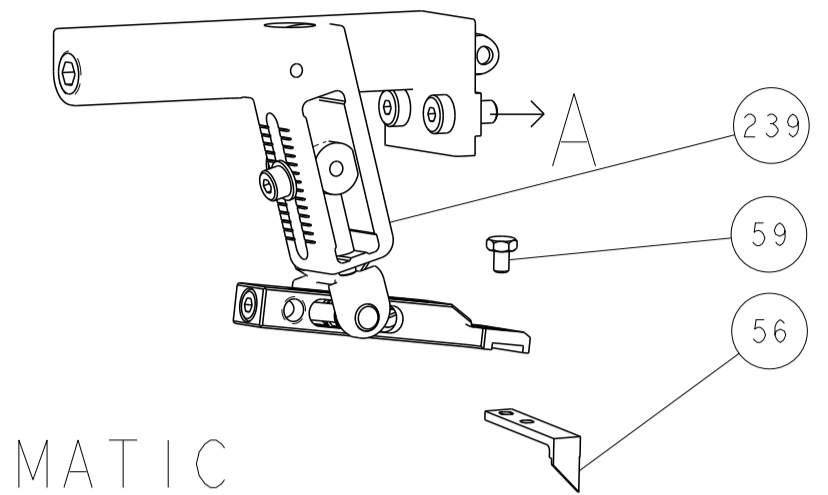
Table with columns: REVISIONS, P, LTM, DESCRIPTION, DATE, DWN, APVD. Shows revision history for item A.

Large table with multiple columns and rows, containing various part numbers, descriptions, and quantities. Includes callout boxes for specific items.

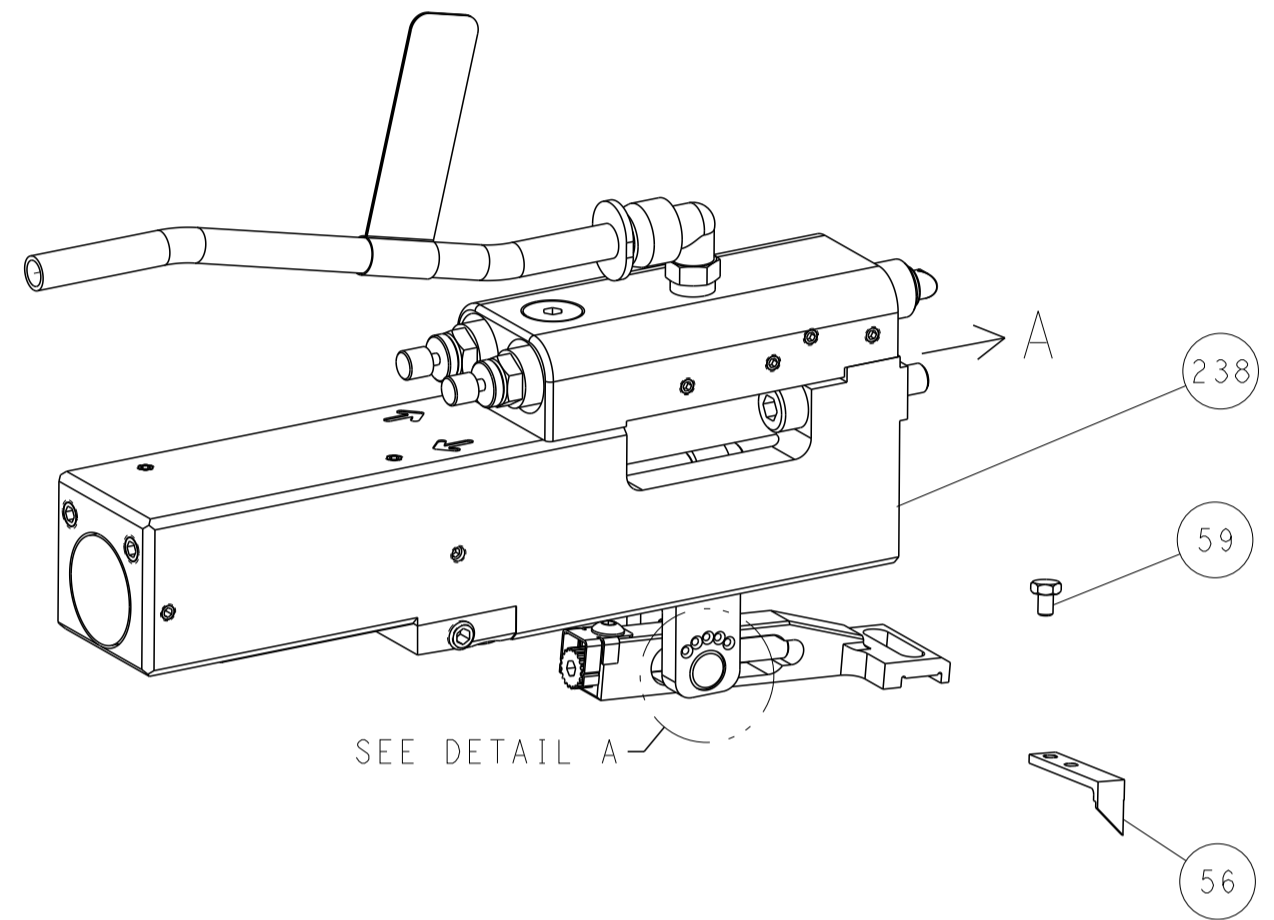
Table with columns: DIMENSIONS, TOLERANCES UNLESS OTHERWISE SPECIFIED, MATERIAL, FINISH, WEIGHT, SCALE, SHEET, REV. Includes technical specifications and drawing information.

REVISONS		DATE	DWN	APVD
LOC	DIST			
A	66			
P	LYN			
	SEE SHEET 1			

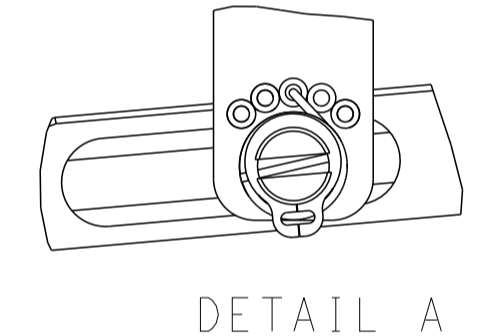
FEED TYPE MECHANICAL



PNEUMATIC

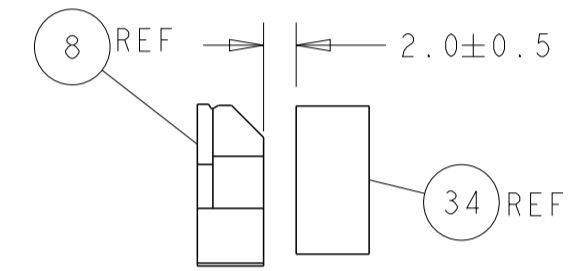
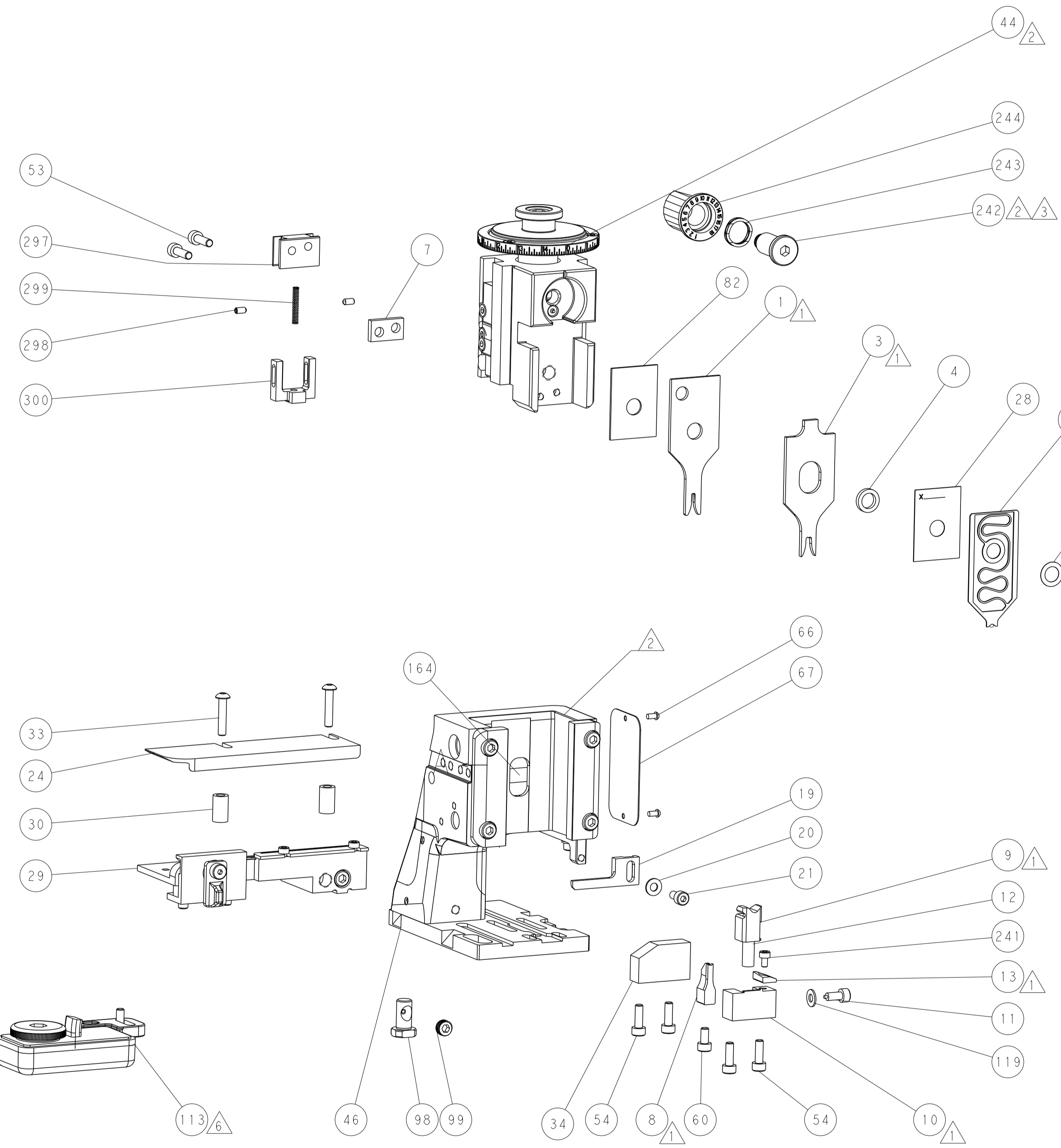
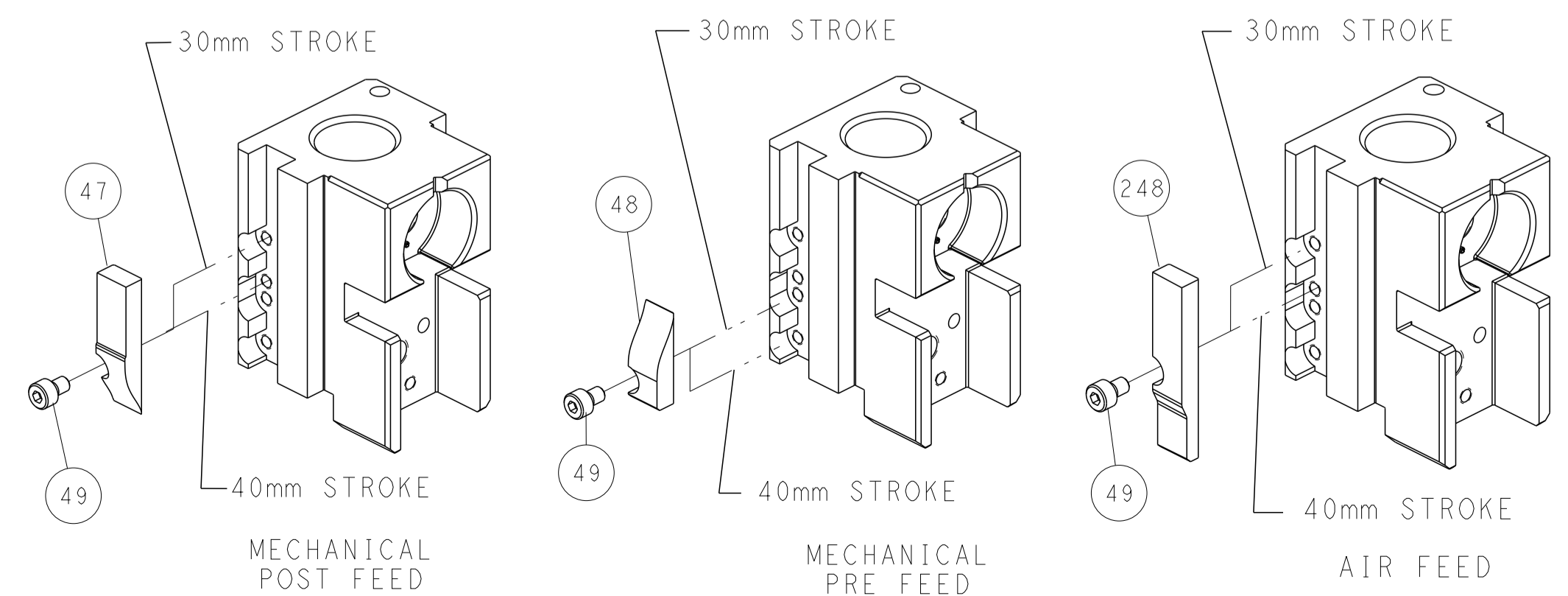


FEED SPRING SETTING POSITION (SHOWN FROM REAR SIDE)

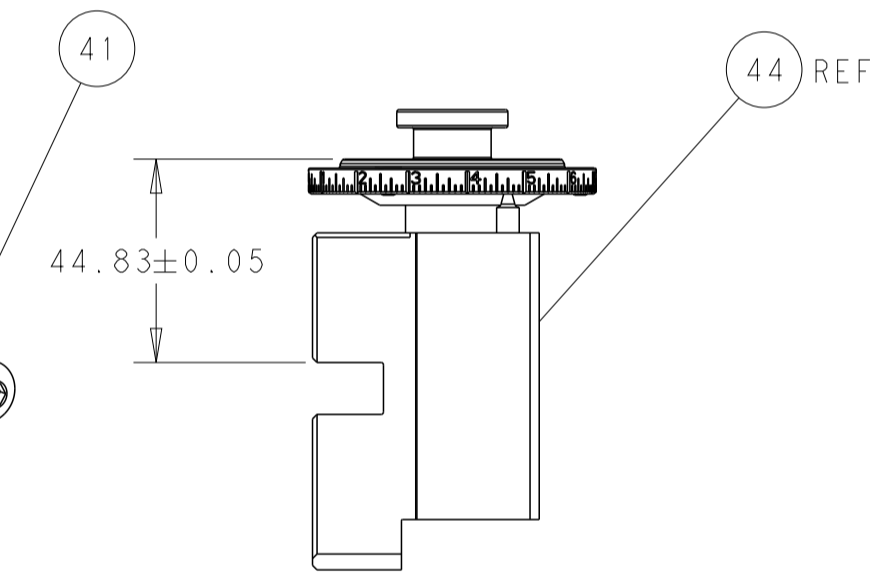


DETAIL A

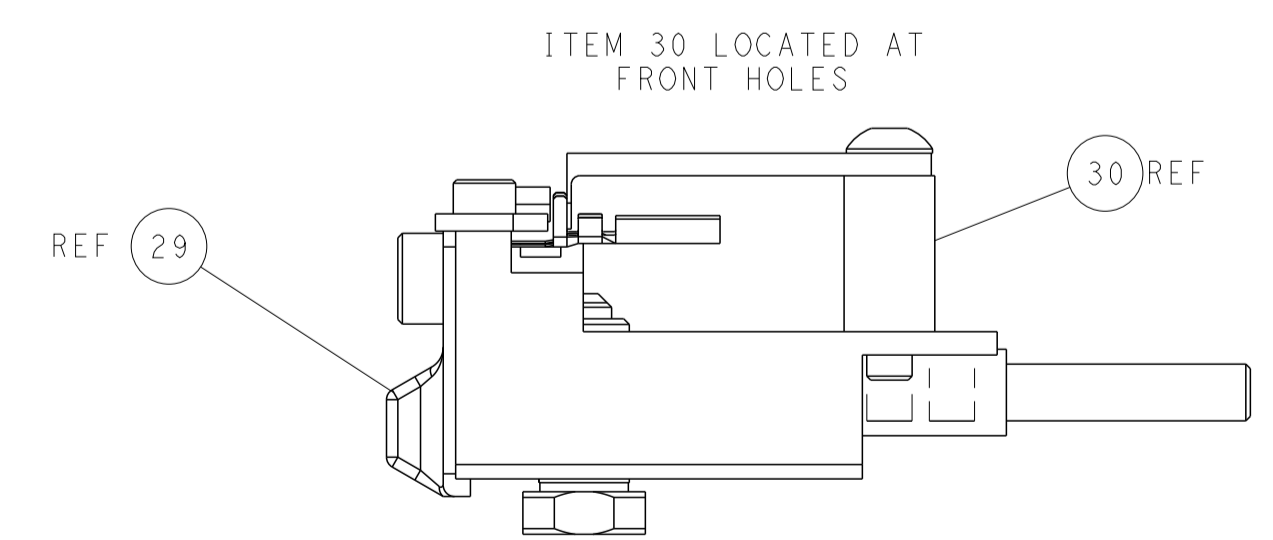
CAM POSITIONS



TERMINAL SUPPORT LOCATION



RAM SET-UP



ITEM 30 LOCATED AT FRONT HOLES

FEED TRACK POSITION GUIDE BY INSULATION BARREL

ATLANTIC VERSION
 Shown on sheets 1 of 4 & 2 of 4
 (Pacific version shown on sheets 3 of 4 & 4 of 4)

DIMENSIONS:		TOLERANCES UNLESS OTHERWISE SPECIFIED:		DWN	11OCT2011	TE Connectivity Harrisburg, PA 17105-3608
mm	0 PLC	±		CHK	11OCT2011	
	1 PLC	±		APVD	11OCT2011	NAME
	2 PLC	±				Ocean Side Feed
	3 PLC	±				Applicator
	4 PLC	±				
	ANGLES	±				SIZE
	FINISH	±				CAGE CODE
MATERIAL						DRAWING NO
						RESTRICTED TO
						00779
						©=2151015
						CUSTOMER ACCESSIBLE PRODUCTION DRAWING
						SCALE
						1:2
						SHEET
						2 OF 4
						REV
						D

PART NUMBER	REVISION	DESCRIPTION	FEED TYPE
2-2151015-1	D	FINE CRIMP HEIGHT ADJUST	MECHANICAL
2-2151015-2	D	FINE CRIMP HEIGHT ADJUST	PNEUMATIC
7-2151015-7	A	CRIMP TOOLING KIT	-

APPLICATOR DATA		
CRIMP	SIZE	TYPE
WIRE	1.58 mm [.062]	F
INSUL	3.18 mm [.125]	F
APPLICATOR INSTRUCTIONS 408-35042		

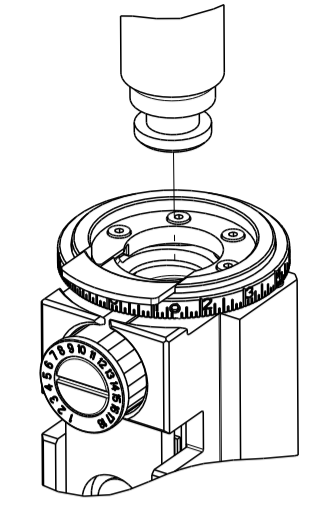
TERMINAL DATA: MOLEX TERMINAL MOLEX CRIMP SPECIFICATION	
TERMINAL NAME: 4.2mm PITCH MINI-FIT TERMINAL	
WIRE STRIP LENGTH	INSULATION DIAMETER RANGE
3.00-3.50 mm [.118-.138 IN]	Ø 2.50-2.95 mm [.098-.116 IN]
TERMINAL APPLICATION SPECIFICATION MOLEX 63900-2600 REV J	

TERMINALS APPLIED			
TE TERMINAL	MOLEX TERMINAL	TE TERMINAL	MOLEX TERMINAL
286603-1	39-00-0038	286611-1	39-00-0040
286603-2	39-00-0055	286611-2	39-00-0061
286603-3	39-00-0207	286611-3	39-00-0053
286603-4	39-00-0163	286611-4	39-00-0120
286603-5	39-00-0059	286611-5	39-00-0126
286603-6	39-00-0153	286611-6	39-00-0219
286603-7	39-00-0181	286611-8	39-00-0411
286603-8	39-00-0213	286611-9	39-00-0430
1-286603-0	44485-1211	1-286611-1	39-00-0121
1-286603-1	39-00-0114	1-286611-2	39-00-0420
1-286603-2	39-00-0428	1-286611-3	39-00-0437
1-286603-3	39-00-0419	1-286611-4	39-00-0426
1-286603-4	39-00-0425	1-286611-6	39-00-0075
1-286603-5	39-00-0436	1-286611-7	39-00-0427
1-286603-6	39-00-0440	1-286611-8	40-13-0853
1-286603-7	39-00-0073	2-286611-0	30490-1002
1-286603-8	39-00-0108	2-286611-1	30490-2002
1-286603-9	39-00-0169	2-286611-2	40-01-0853
2-286603-0	39-00-0175	2-286611-3	98-00-0174
2-286603-1	39-00-0194	2-286611-4	30490-0002
2-286603-2	39-00-0200		
2-286603-3	39-00-0405		
2-286603-4	39-00-0407		
2-286603-5	39-00-0410		
2-286603-6	40-13-0851		
2-286603-8	44485-1311		
2-286603-9	44485-1411		

WIRE SIZE	CRIMP HEIGHT mm [INCH]	CRIMP HEIGHT REFERENCE SETTING
0.80mm2	1.02+/-0.05 [.040+/- .002]	5.9
18 AWG	1.02+/-0.05 [.040+/- .002]	5.9
0.50mm2	0.995+/-0.045 [.039+/- .0018]	6.2
20 AWG	0.995+/-0.045 [.039+/- .0018]	6.2
0.35mm2	0.895+/-0.045 [.035+/- .0018]	7.1
22 AWG	0.895+/-0.045 [.035+/- .0018]	7.1
0.20mm2	0.83+/-0.04 [.033+/- .0016]	7.7
24 AWG	0.83+/-0.04 [.033+/- .0016]	7.7

- 1 RECOMMENDED SPARE PARTS
- 2 REFER TO SUPPLIED INSTRUCTION SHEET FOR CLEANING, LUBRICATION AND STORAGE OF APPLICATOR.
- 3 APPLY PART NUMBER 2-23419-6 LOCTITE TO THREADS OF ITEM 242.
- 4 CRIMP HEIGHT REFERENCE SETTING WAS THE SETTING USED WHEN THE APPLICATOR WAS QUALIFIED AT THE FACTORY. ADJUSTMENT MAY BE NECESSARY WHEN RUNNING APPLICATOR IN THE FIELD.
- 5. UNLESS SPECIFIED OTHERWISE TORQUE VALUES SHALL BE USED PER DOCUMENT, 101-35000.
- 6 TERMINAL LUBRICANT IS RECOMMENDED.

PACIFIC VERSION TERMINATOR INTERFACE ADAPTER



TERMINAL DATA: MOLEX TERMINAL CMOLEX CRIMP SPECIFICATION	
TERMINAL NAME: 4.2mm PITCH MINI-FIT TERMINAL	
WIRE STRIP LENGTH	INSULATION DIAMETER RANGE
3.00-3.50 mm [.118-.138 IN]	Ø 2.50-2.95 mm [.098-.116 IN]
TERMINAL APPLICATION SPECIFICATION MOLEX 63900-2600 REV J	

TERMINALS APPLIED			
TE TERMINAL	MOLEX TERMINAL	TE TERMINAL	MOLEX TERMINAL
286603-9	44476-1111	1-2113022-1	46083-1211
2-286603-7	44476-1211	1-2113022-2	46083-1221
286611-7	44478-1111	1-2113022-3	46134-1111
1-286611-9	44478-1211	1-2113022-4	46134-1121
2113022-1	45750-1211	1-2113022-5	46134-1211
2113022-2	45750-1111	1-2113022-6	46134-1221
2113022-3	46012-1111		
2113022-4	46018-1541		
2113022-5	46083-1111		
2113022-6	46098-1541		
2113022-7	46012-1141		
2113022-8	46012-1211		
2113022-9	46012-1241		
1-2113022-0	46083-1121		

WIRE SIZE	CRIMP HEIGHT mm [INCH]	CRIMP HEIGHT REFERENCE SETTING
0.80mm2	1.02+/-0.05 [.040+/- .002]	5.9
18 AWG	1.02+/-0.05 [.040+/- .002]	5.9
0.50mm2	0.995+/-0.045 [.039+/- .0018]	6.2
20 AWG	0.995+/-0.045 [.039+/- .0018]	6.2

***WARNING**
ON INSTALLATION, SET WIRE DISC TO CRIMP HEIGHT REFERENCE SETTING FOR LARGEST WIRE SIZE. CRIMP HEIGHT REFERENCE SETTINGS GREATER THAN THE VALUE SHOWN MAY CAUSE DAMAGE TO THE CRIMP TOOLING, REFER TO THE INSTRUCTION SHEET FOR PROPER SETUP AND ADJUSTMENTS.

PACIFIC VERSION
Shown on sheets 3 of 4 & 4 of 4
(Atlantic version shown on sheets 1 of 4 & 2 of 4)

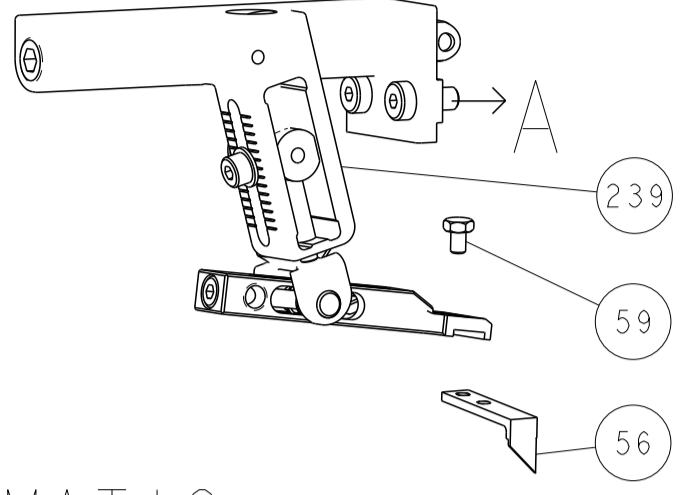
LOC	DIST	REVISONS
A	66	
		DESCRIPTION
		DATE
		DWN
		APVD

-	1	1	1803945-4	TONKER	300
-	1	1	1-22278-9	SPRING, COMPRESSION	299
-	2	2	4-18032-3	SCR, SET, FLT PNT, M3 X 6.0	298
-	1	1	1803944-1	SPACER, TONKER	297
-	1	1	2119082-9	CAM, SNAIL, INSULATION ADJUSTMENT	244
-	1	1	2079764-1	WASHER, WAVE SPRING, CREST-TO-CREST	243
-	1	1	2119083-1	RETAINER, INSULATION DIAL	242
-	1	1	18023-1	SCR, SKT HD CAP M3 X 5.0	241
-	-	1	2119580-1	MECHANICAL FEED ASSEMBLY	239
-	1	-	2844940-1	AIR FEED MODULE	238
-	REF	REF	994970-2	COUNTER, MAGNETIC	164
-	1	-	2119641-2	FEED CAM, AIR FEED	151
-	1	1	2168083-8	SCR, SKT HD CAP, RoHS, M4 X 16	144
-	4	4	2168083-9	SCR, SKT HD CAP, RoHS, M4 X 20	143
-	-	1	2119653-2	FEED CAM, POST FEED	142
-	1	1	1-1803583-0	APPLICATOR BASIC ASSEMBLY, SF	141
-	1	1	1803516-1	RAM ASSEMBLY, SF PACIFIC	140
-	1	1	1-18028-2	WASHER, FLAT, REG M4	119
-	1	1	2119955-1	ASSY, LUBRICATOR, SIDE FEED	113
-	1	1	2844908-1	SCREW, LOCKING	99
-	1	1	2844907-1	POST, LOCKING	98
-	1	1	455888-9	SPACER, CRIMPER	82
-	1	1	1803607-3	DOCUMENTATION PACKAGE	71
-	1	1	2119791-5	DEPRESSOR, WIRE	70
-	1	1	2119943-1	WASHER, SPACER	69
-	1	1	2119740-1	TAG IDENTIFICATION	67
-	2	2	2168078-1	SCREW, DRIVE, RH, RoHS, 2 x .188	66
-	1	1	5-18022-5	SCR, HEX HD CAP, M4 X 6.0	59
-	1	1	1338685-1	PAWL, FEED	56
-	2	2	2-2168083-5	SCR, SKT HD CAP, RoHS, M4 X 14	53
-	1	2	18023-9	SCR, SKT HD CAP M4 X 6.0	49
-	-	1	2119652-1	FEED CAM, PRE FEED	48
-	1	1	1803602-1	SCR, BHSC, RoHS (M8 X 25)	41
-	1	1	6-1752356-2	SUPPORT, TERMINAL	34
-	2	2	2079383-5	SCR, BHSC, RoHS (M4 X 20)	33
-	2	2	2-2844962-4	SPACER, CYLINDRICAL, STRIP GUIDE	30
-	1	1	2844992-1	ASSEMBLY, STRIP GUIDE	29
-	1	1	455888-3	SPACER, CRIMPER	28
-	1	1	1320928-2	STRIP GUIDE	24
-	1	1	2168083-2	SCR, SKT HD CAP, RoHS, M4 X 8.0	21
-	1	1	1-18028-2	WASHER, FLAT, REG M4	20
-	1	1	2119533-1	STRIPPER, SIDE FEED	19
-	1	1	2119806-1	INSERT, SHEAR	13
-	1	1	3-22280-3	SPRING, COMPRESSION	12
-	1	1	1-356885-3	STOP, SHEAR	11
-	1	1	2119805-1	SHEAR HOLDER, FRONT	10
-	1	1	1803095-5	FLOATING SHEAR, FRONT	9
1	1	1	3-1633129-3	ANVIL, COMBINATION .062	8
-	1	1	240641-5	SPACER	7
-	1	1	2119757-8	DEPRESSOR, SHEAR	5
-	1	1	1-238011-7	BLOCK, CRIMPER SPACER	4
1	1	1	1-2119582-8	CRIMPER, INSULATION F PREMIUM	3
1	1	1	4-456403-2	CRIMPER, WIRE PREMIUM	1

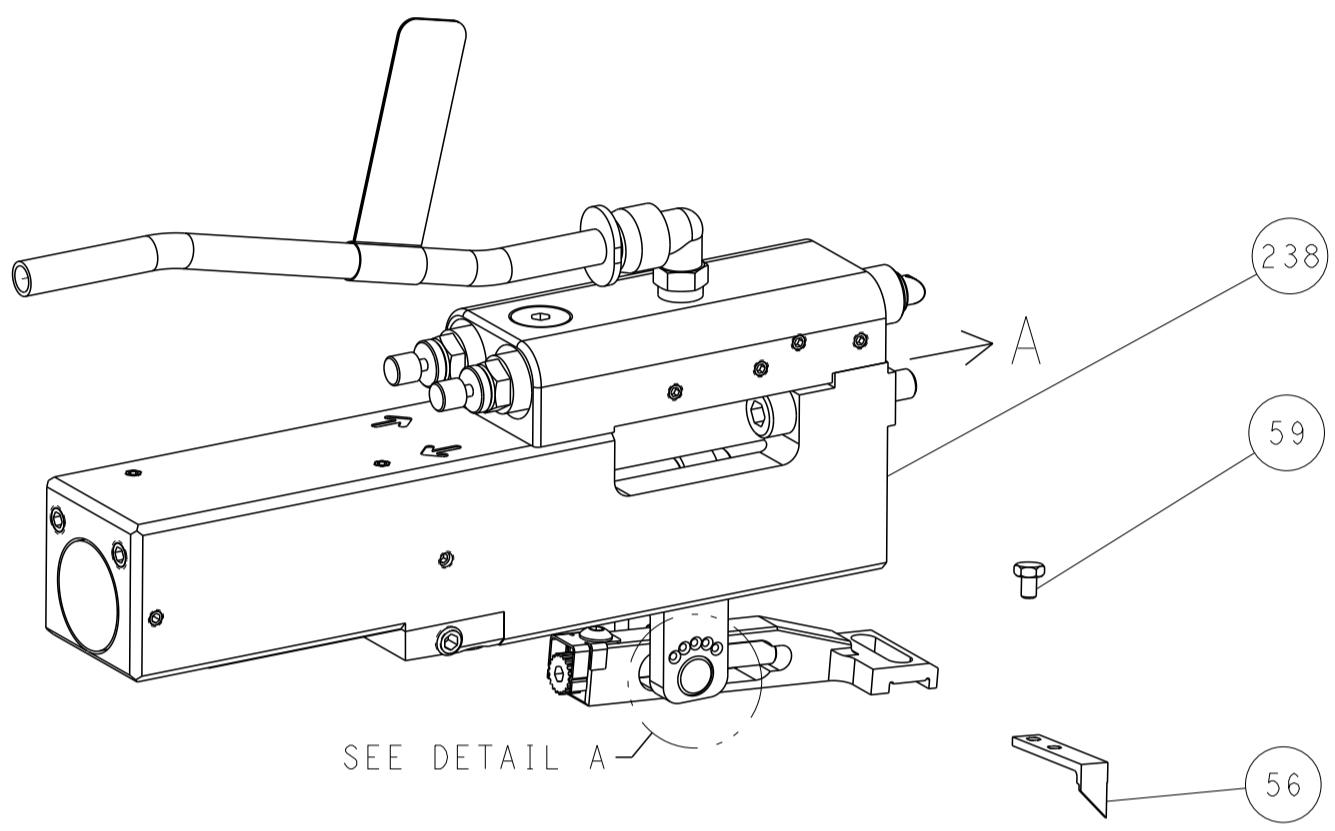
DIMENSIONS:		TOLERANCES UNLESS OTHERWISE SPECIFIED:	
mm	0 PLC ±	1 PLC ±	2 PLC ±
	3 PLC ±	4 PLC ±	ANGLES ±
			FINISH
MATERIAL		WEIGHT	

LOC		DIST		REVISIONS			
A	66	P	LTM	DESCRIPTION	DATE	DWN	APVD
		-		SEE SHEET 1			

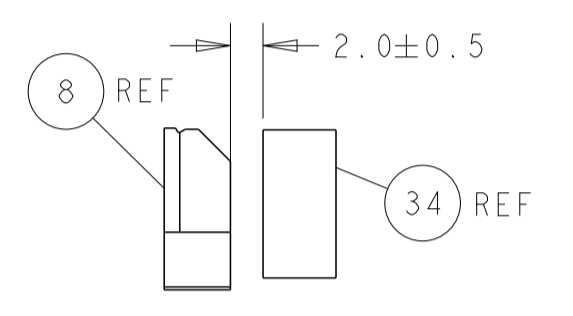
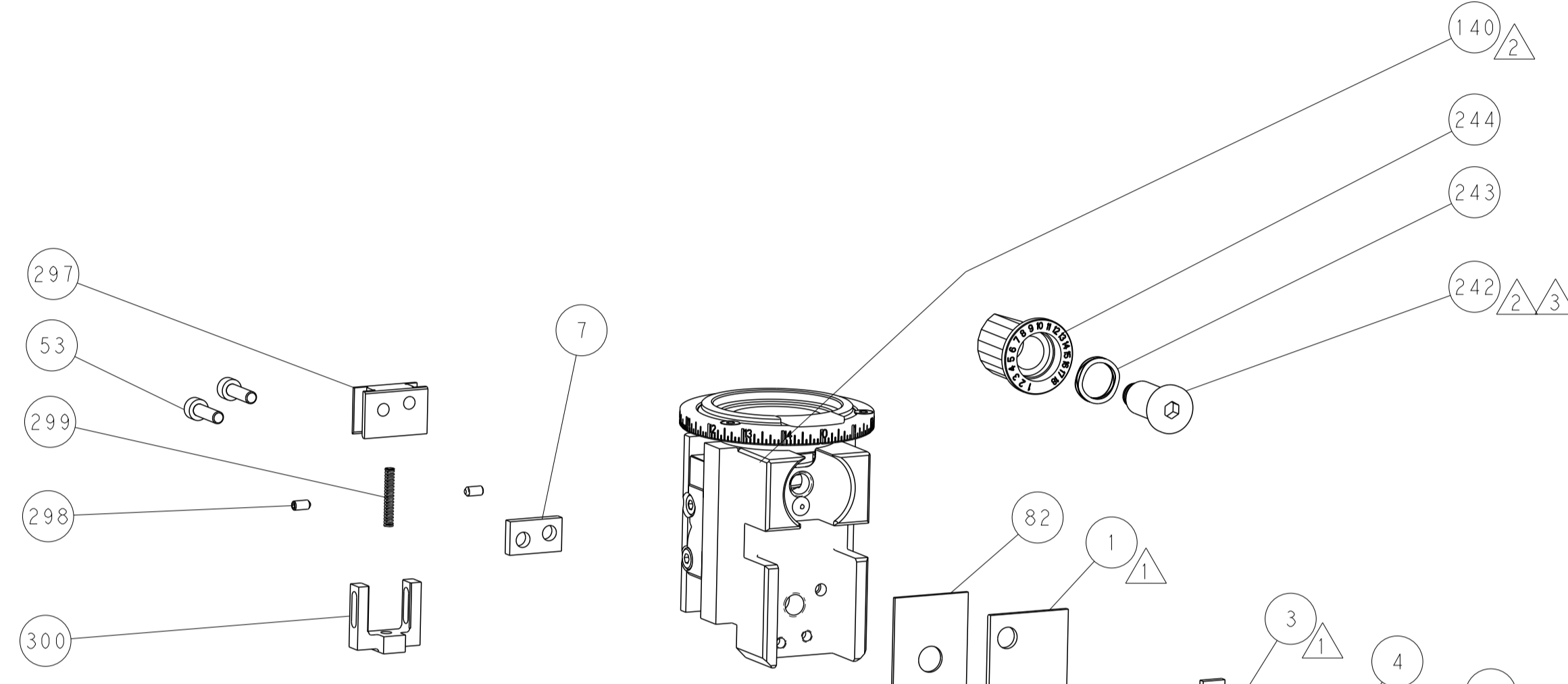
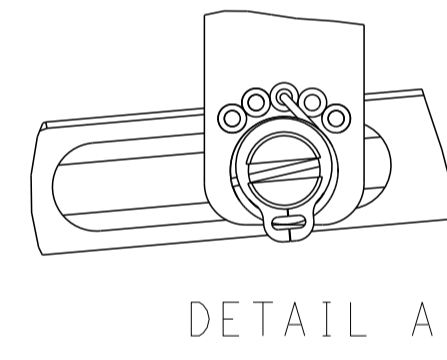
FEED TYPE MECHANICAL



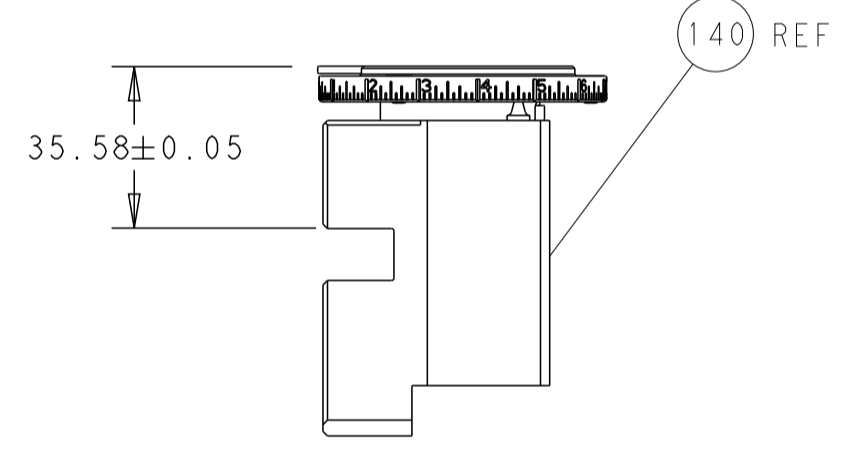
PNEUMATIC



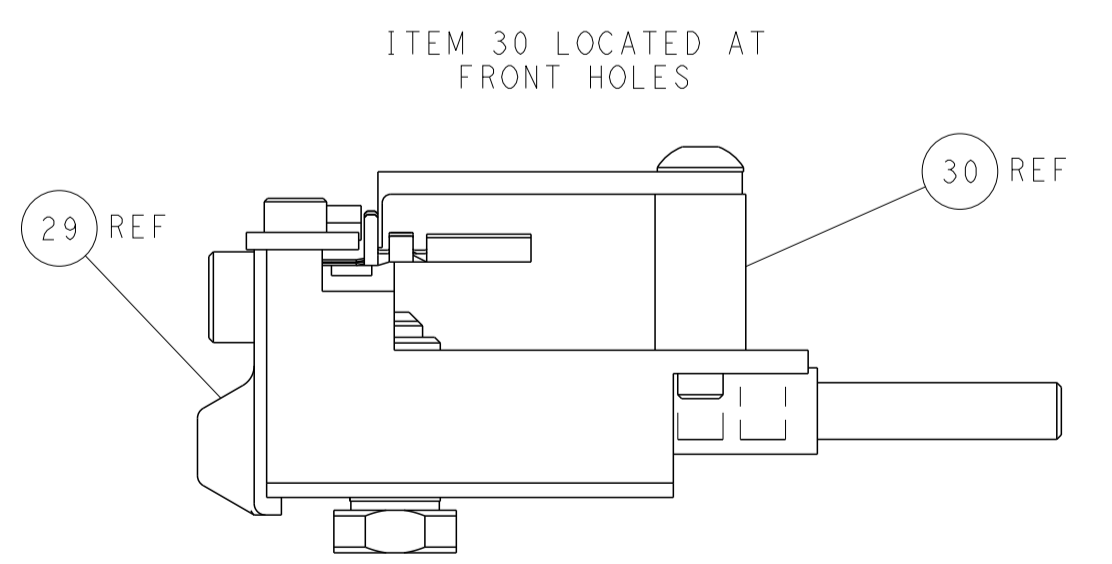
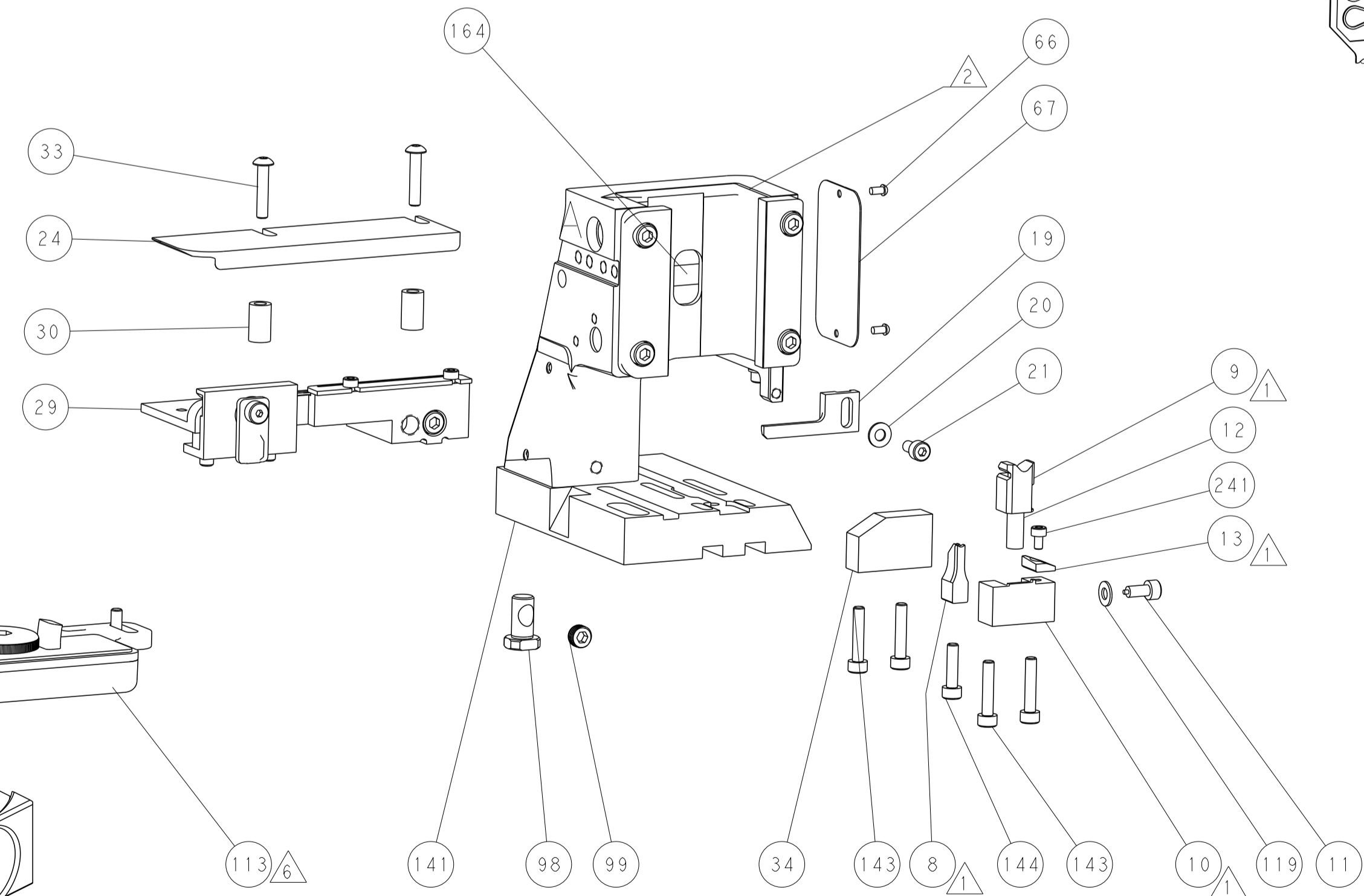
FEED SPRING SETTING POSITION (SHOWN FROM REAR SIDE)



TERMINAL SUPPORT LOCATION

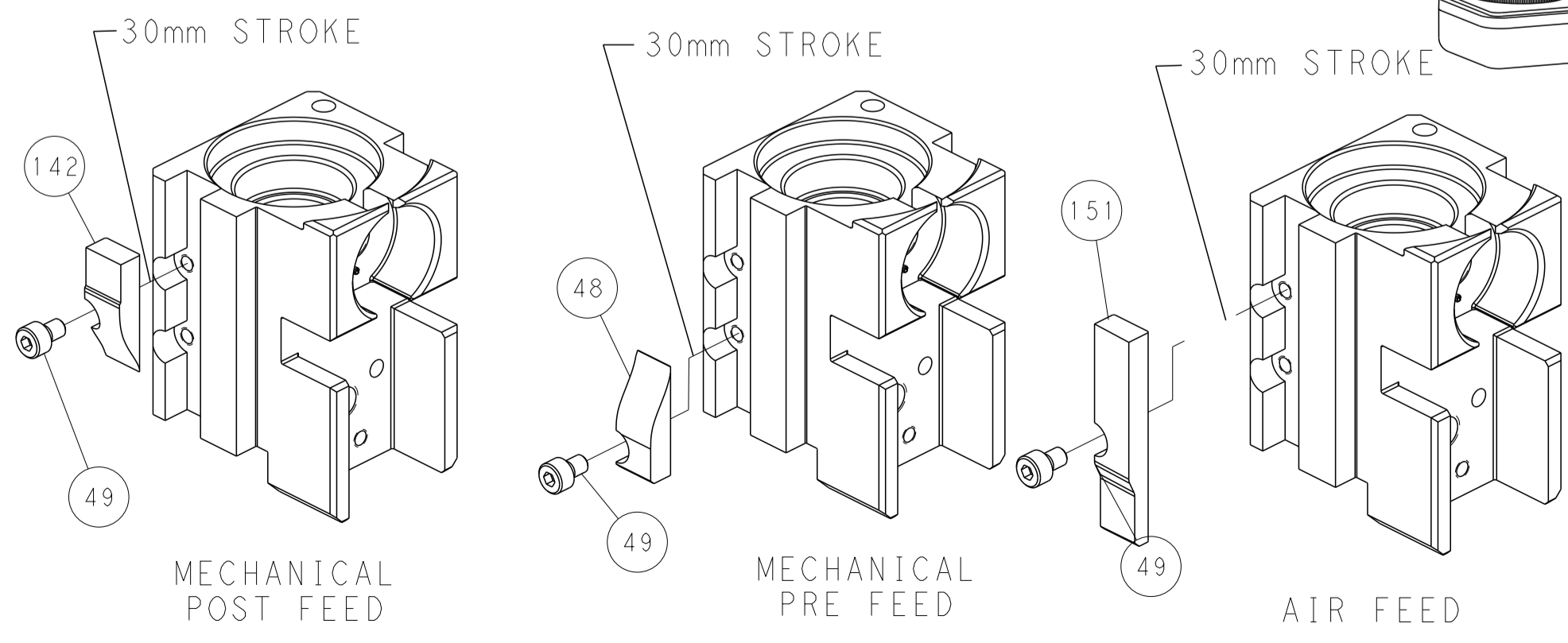


RAM SET-UP



FEED TRACK POSITION GUIDE BY INSULATION BARREL

CAM POSITIONS



PACIFIC VERSION
 Shown on sheets 3 of 4 & 4 of 4
 (Atlantic version shown on sheets 1 of 4 & 2 of 4)

DIMENSIONS:		TOLERANCES UNLESS OTHERWISE SPECIFIED:		DWN: STAKEM 11OCT2011		TE Connectivity	
mm	0 PLC ±	1 PLC ±	2 PLC ±	3 PLC ±	4 PLC ±	5 PLC ±	Harrisburg, PA 17105-3608
	ANGLES ±			CHK: G. BAILEY 11OCT2011		NAME: Ocean Side Feed Applicator	
MATERIAL:		FINISH:		APVD: T. ELBIN 11OCT2011		RESTRICTED TO:	
				PRODUCT SPEC:		SIZE: CAGE CODE: DRAWING NO:	
				APPLICATION SPEC:		A1 00779 ©=2151015	
				WEIGHT:		SCALE: 1:2 SHEET 4 OF 4 REV D	
				CUSTOMER ACCESSIBLE PRODUCTION DRAWING			