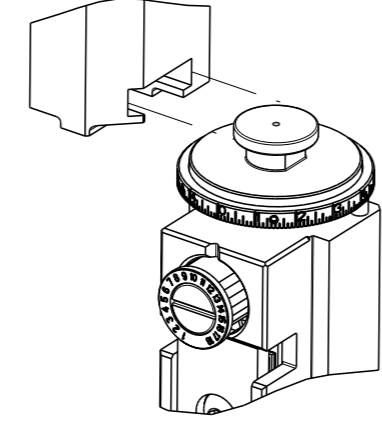


THIS DRAWING IS UNPUBLISHED. RELEASED FOR PUBLICATION 20
 BY TYCO ELECTRONICS CORPORATION. ALL RIGHTS RESERVED.

PART NUMBER	REVISION	DESCRIPTION	FEED TYPE
2150935-2	B	FINE CRIMP HEIGHT ADJUST	PNEUMATIC
7-2150935-2	B	PNEUMATIC AND CRIMP TOOLING KIT	PNEUMATIC
7-2150935-7	A	CRIMP TOOLING KIT	-

ATLANTIC VERSION TERMINATOR INTERFACE ADAPTER



APPLICATOR DATA		
CRIMP	SIZE	TYPE
WIRE	4.06 mm [1.60]	F
INSUL	5.84 mm [2.30]	F
APPL INSTRUCTIONS 408-35043		

TERMINAL DATA: ESSEX TERMINAL TE CRIMP SPECIFICATION			
TERMINAL NAME: RING TERMINAL, STRAIGHT			
WIRE STRIP LENGTH		INSULATION DIAMETER RANGE	
4.75-5.51 mm [1.87-.217 IN]		Ø4.06-5.36 mm [1.60-.211 IN]	
TERMINAL APPLICATION SPECIFICATION		NONE	-
TERMINALS APPLIED			
TE TERMINAL	ESSEX TERMINAL	TE TERMINAL	ESSEX TERMINAL
3311273-1	101234A02	3311273-2	1012XX-A0X

WIRE SIZE	CRIMP HEIGHT mm [INCH]	CRIMP HEIGHT REFERENCE SETTING
12 AWG	2.98 +/- 0.05 [1.117 +/- .002]	6.5
14 AWG	2.74 +/- 0.05 [1.08 +/- .002]	9.0



- RECOMMENDED SPARE PARTS
 - REFER TO SUPPLIED INSTRUCTION SHEET FOR CLEANING, LUBRICATION AND STORAGE OF APPLICATOR.
 - APPLY PART NUMBER 1-23419-5 LOCTITE TO THREADS OF ITEMS 180. APPLY PART NUMBER 2-23419-6 LOCTITE TO THREADS OF ITEM 242.
 - CRIMP HEIGHT REFERENCE SETTING WAS THE SETTING USED WHEN THE APPLICATOR WAS QUALIFIED AT THE FACTORY. ADJUSTMENT MAY BE NECESSARY WHEN RUNNING APPLICATOR IN THE FIELD.
 - TERMINAL LUBRICANT IS RECOMMENDED.
 - TERMINAL PITCH NOT COMPATIBLE WITH MECHANICAL FEED.
7. UNLESS SPECIFIED OTHERWISE TORQUE VALUES SHALL BE USED PER DOCUMENT, 101-35000.

*WARNING
 ON INSTALLATION, SET WIRE DISC TO CRIMP HEIGHT REFERENCE SETTING FOR LARGEST WIRE SIZE. CRIMP HEIGHT REFERENCE SETTINGS GREATER THAN THE VALUE SHOWN MAY CAUSE DAMAGE TO THE CRIMP TOOLING, REFER TO THE INSTRUCTION SHEET FOR PROPER SETUP AND ADJUSTMENTS.

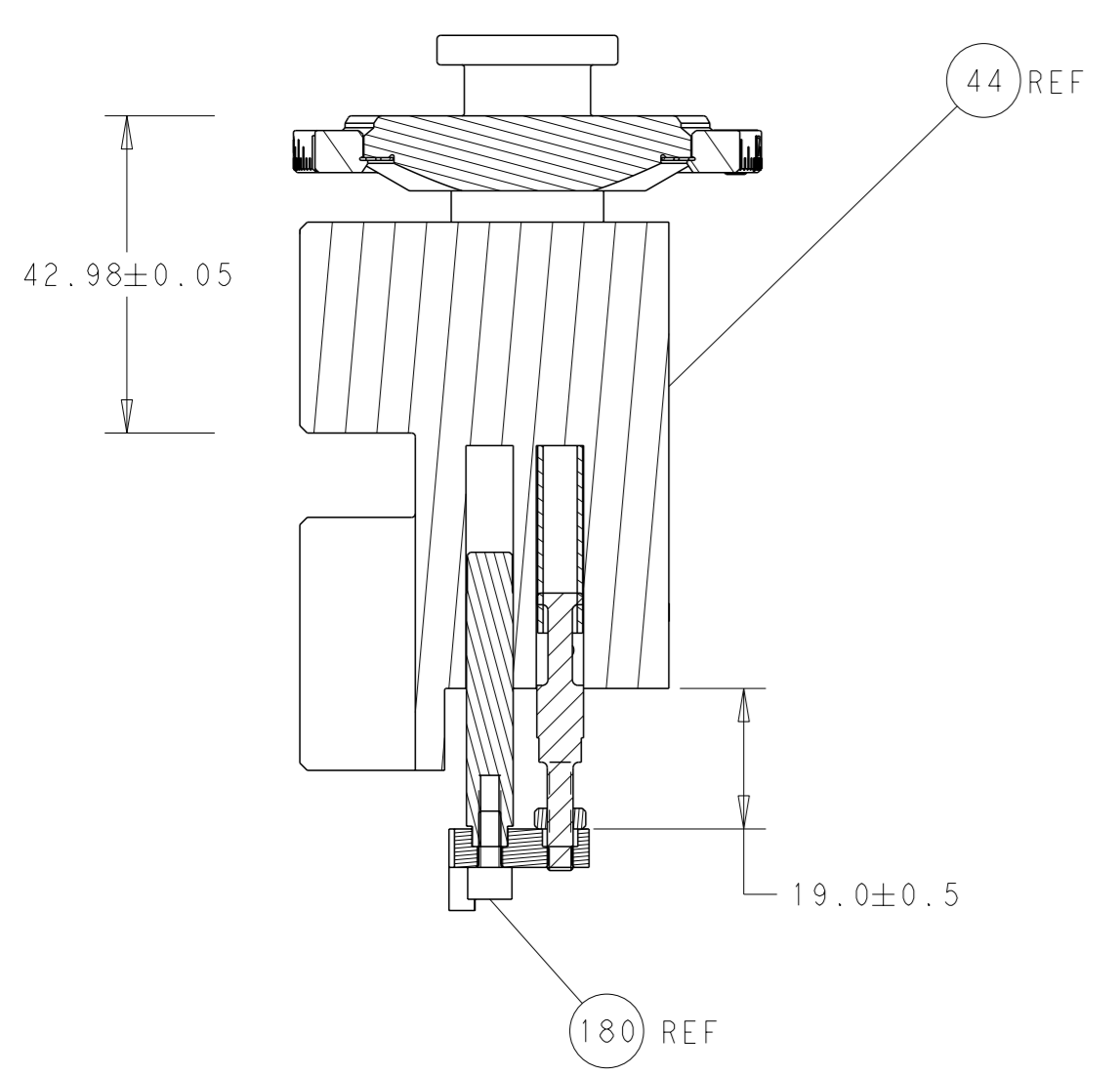
ATLANTIC VERSION
 Shown on sheets 1 of 4 & 2 of 4
 (Pacific version shown on sheets 3 of 4 & 4 of 4)

LOC	DIST	REVISIONS					
		P	LYR	DESCRIPTION	DATE	OWN	APVD
A	66	A		RELEASED	24AUG2018	TB	TE
		B		ECR-19-017899	25NOV2019	FJ	TE

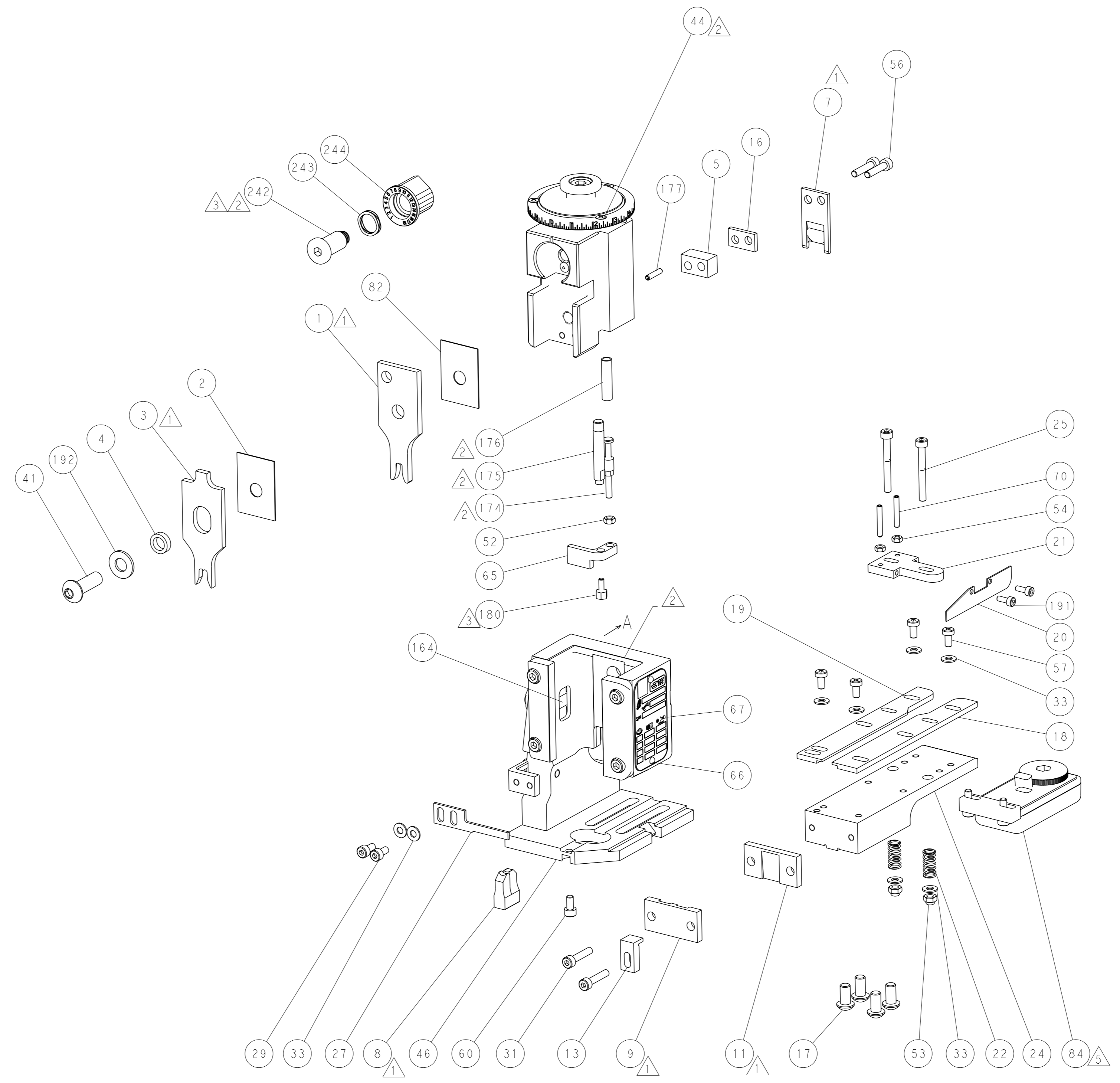
-	1	1	2119641-1	FEED CAM, AIR FEED	248	
-	1	1	2119082-9	CAM, SNAIL, INSULATION ADJUSTMENT	244	
-	1	1	2079764-1	WASHER, WAVE SPRING, CREST-TO-CREST	243	
	-	1	2119083-1	RETAINER, INSULATION DIAL	242	
-	1	1	2844940-4	AIR FEED MODULE	238	
-	1	1	1-18028-0	WASHER, FLAT, REG M8	192	
	-	1	2168083-1	SCR, SKT HD CAP, RoHS, M3 X 8.0	191	
-	1	1	1752354-2	STANDOFF, HOLD-DOWN	180	
-	1	1	6-993111-6	PIN, SLOTTED SPRING 3.0 X 14.0	177	
-	1	1	8-22280-7	SPRING, COMPRESSION	176	
-	1	1	1752353-2	GUIDE PIN, HOLD-DOWN	175	
-	1	1	1901680-2	GUIDE PIN, HOLD-DOWN	174	
-	REF	REF	994970-2	COUNTER, MAGNETIC	164	
	-	1	2119955-2	ASSY, LUBRICATOR, END FEED	84	
-	1	1	455888-5	SPACER, CRIMPER	82	
-	1	1	1803607-4	DOCUMENTATION PACKAGE	71	
-	2	2	3-18032-3	SCR, SET, FLT PNT, M3 X 20.0	70	
-	1	1	2119740-1	TAG, IDENTIFICATION	67	
-	2	2	2168078-1	SCREW, DRIVE, RH, RoHS, 2 x .188	66	
-	1	1	1901681-1	HOLD-DOWN, TERMINAL	65	
-	1	1	2168083-2	SCR, SKT HD CAP, RoHS, M4 X 8.0	60	
-	1	1	5-18022-5	SCR, HEX HD CAP, M4 X 6.0	59	
-	4	4	2168400-4	SHCS, LOW HEAD, RoHS, M4 X 8	57	
-	2	2	2-2168083-6	SCR, SKT HD CAP, RoHS, M4 X 18	56	
-	2	2	5018030-1	NUT, HEX, REG, RoHS, M3	54	
-	2	2	986965-8	NUT, LOCK, HEX, TORQUE (M4)	53	
-	1	1	1-5018030-0	NUT, HEX, REG, RoHS, M3.5	52	
-	1	1	2063961-9	FEED FINGER	51	
-	1	1	18023-9	SCR, SKT HD CAP M4 X 6.0	49	
-	1	1	2119655-5	APPLICATOR BASIC ASSEMBLY, EF	46	
-	1	1	1803517-1	RAM ASSEMBLY, EF ATLANTIC	44	
-	1	1	1803602-1	SCR, BHSC, RoHS (M8 X 25)	41	
-	8	8	1-18028-2	WASHER, FLAT, REG M4	33	
-	2	2	2168083-9	SCR, SKT HD CAP, RoHS, M4 X 20	31	
-	2	2	2168083-2	SCR, SKT HD CAP, RoHS, M4 X 8.0	29	
-	1	1	690455-2	STRIPPER, FRONT CASTING	27	
-	2	2	1-2168083-6	SCR, SKT HD CAP, RoHS, M4 X 35	25	
-	1	1	1752371-5	PLATE, STRIP GUIDE	24	
-	2	2	2-22281-3	SPRING, COMPRESSION	22	
-	1	1	1633168-1	ARM, STOCK DRAG	21	
-	1	1	1-464452-1	DRAG, STOCK	20	
-	1	1	1-1901696-5	STRIP GUIDE, REAR	19	
-	1	1	1-1901695-5	STRIP GUIDE, FRONT	18	
-	4	4	1-2079383-1	SCR, BHSC, RoHS (M6 X 12)	17	
-	1	1	1-240641-6	SPACER	16	
-	1	1	1752360-1	SPACER, HOLD-DOWN	13	
	-	1	240644-9	PLATE, REAR SHEAR	11	
-	-	-	-	-	10	
	-	1	1	5-690482-4	PLATE, FRONT SHEAR	9
	1	2	1	1-1803615-7	ANVIL, COMBINATION, END FEED	8
	-	1	1	2217206-5	BLADE, SLUG	7
-	-	-	-	-	6	
-	1	1	1	5-240641-7	SPACER	5
-	1	1	1	3-238011-1	BLOCK, CRIMPER SPACER	4
	1	2	1	2-1803017-7	CRIMPER, INSULATION F	3
-	1	1	1	455888-5	SPACER, CRIMPER	2
	1	2	1	456414-5	CRIMPER, WIRE	1
-	-	-	-	-	0	

DIMENSIONS:			TOLERANCES UNLESS OTHERWISE SPECIFIED:			DATE	BY	CHK	CHK	DATE	NAME									
mm	0 PLC	±	1 PLC	±	2 PLC	±	3 PLC	±	4 PLC	±	13JUL2018	T. BROOKENS	13JUL2018	M. HERR	13JUL2018	C. TOPPER	13JUL2018	TE Connectivity Harrisburg, PA 17105-3608		
MATERIAL:	FINISH:	WEIGHT:	SCALE:	SHEET:	OF:	REV:	Customer Accessible Production Drawing				SCALE	1:1	SHEET	1	OF	4	REV	B	Ocean End Feed Applicator	

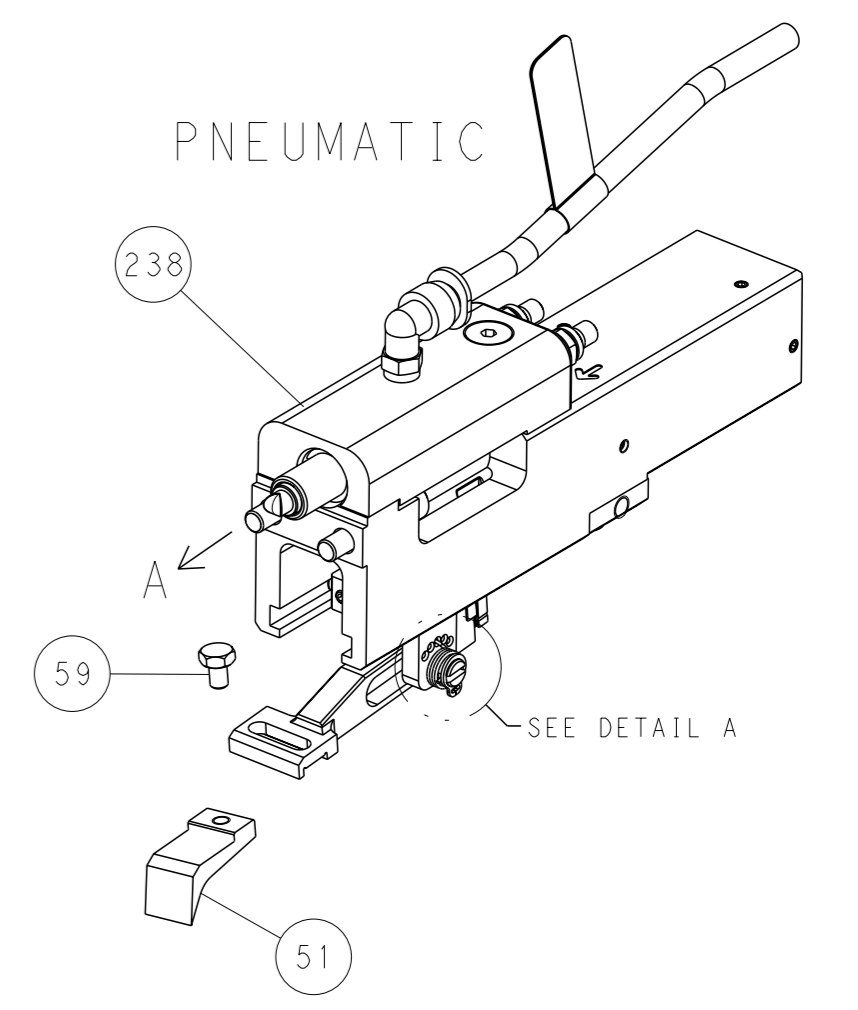
LOC		DIST		REVISIONS			
A	66	P	LYR	DESCRIPTION	DATE	OWN	APVD
		-		SEE SHEET 1	-	-	-



RAM AND HOLDDOWN SET-UP

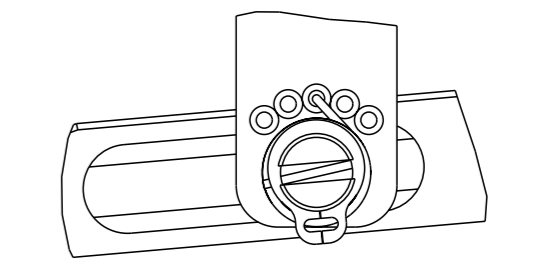


FEED TYPE



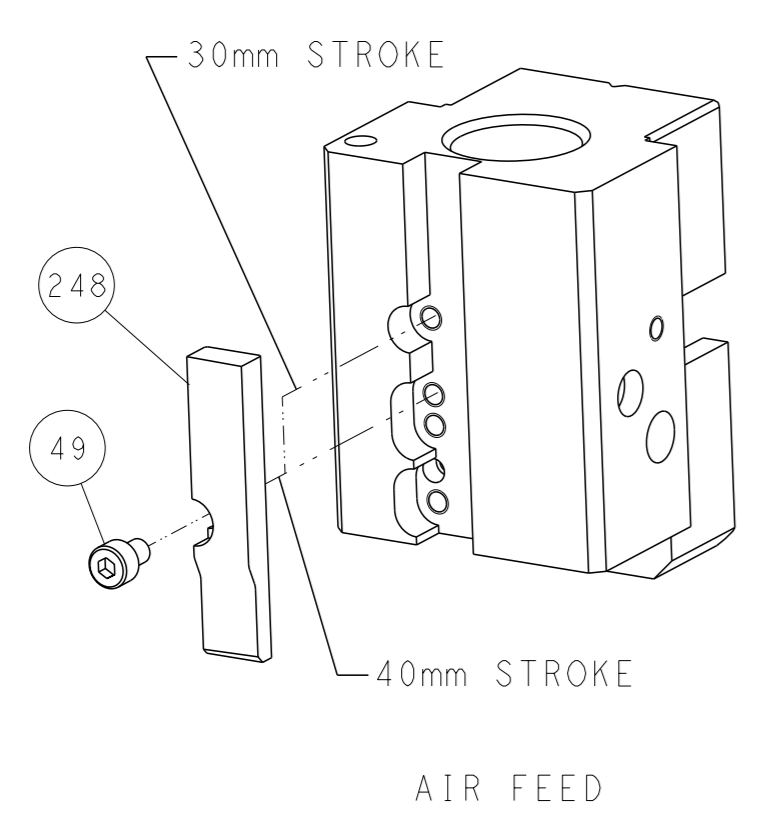
PNEUMATIC

FEED SPRING SETTING POSITION



DETAIL A

CAM POSITION



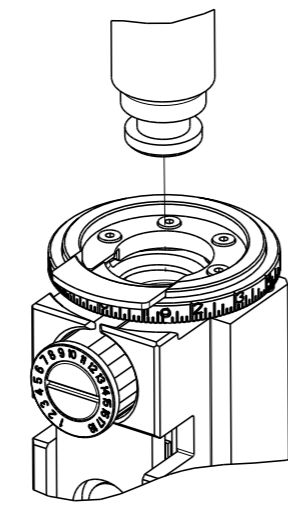
AIR FEED

ATLANTIC VERSION
 Shown on sheets 1 of 4 & 2 of 4
 (Pacific version shown on sheets 3 of 4 & 4 of 4)

<small>THIS DRAWING IS A CONTROLLED DOCUMENT FROM TYCO ELECTRONICS CORPORATION. IT IS SUBJECT TO CHANGE AND THE CONTROLLING ENGINEERING ORGANIZATION SHOULD BE CONTACTED FOR THE LATEST REVISION.</small>		DWN T. BROOKS 13JUL2018 CHK M. HERR 13JUL2018 APVD C. TOPPER 13JUL2018	TE Connectivity Harrisburg, PA 17105-3608
DIMENSIONS: mm TOLERANCES UNLESS OTHERWISE SPECIFIED: 0 PLC ± 1 PLC ± 2 PLC ± 3 PLC ± 4 PLC ± ANGLES FINISH *		NAME Ocean End Feed Applicator PRODUCT SPEC APPLICATION SPEC SIZE CAGE CODE DRAWING NO. RESTRICTED TO A1 00779 C=2150935	WEIGHT SCALE 1:1 SHEET 2 OF 4 REV B
MATERIAL:		Customer Accessible Production Drawing	

THIS DRAWING IS UNPUBLISHED.	RELEASED FOR PUBLICATION	20	
COPYRIGHT 20 BY TYCO ELECTRONICS CORPORATION. ALL RIGHTS RESERVED.			
PART NUMBER	REVISION	DESCRIPTION	FEED TYPE
2-2150935-2	B	FINE CRIMP HEIGHT ADJUST	PNEUMATIC
7-2150935-7	A	CRIMP TOOLING KIT	-

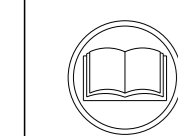
PACIFIC VERSION TERMINATOR
INTERFACE ADAPTER



APPLICATOR DATA		
CRIMP	SIZE	TYPE
WIRE	4.06 mm [.160]	F
INSUL	5.84 mm [.230]	F
APPL INSTRUCTIONS 408-35043		

TERMINAL DATA: ESSEX TERMINAL		TE CRIMP SPECIFICATION	
TERMINAL NAME: RING TERMINAL, STRAIGHT			
WIRE STRIP LENGTH 4.75-5.51 mm [.187-.217 IN]		INSULATION DIAMETER RANGE Ø4.06-5.36 mm [.160-.211 IN]	
TERMINAL APPLICATION SPECIFICATION	NONE	-	-
TERMINALS APPLIED			
TE TERMINAL	ESSEX TERMINAL	TE TERMINAL	ESSEX TERMINAL
3311273-1	101234A02	3311273-2	1012XX-A0X

WIRE SIZE	CRIMP HEIGHT mm [INCH]	CRIMP HEIGHT REFERENCE SETTING
12 AWG	2.98 +/- 0.05 [.117 +/- .002]	6.5
14 AWG	2.74 +/- 0.05 [.108 +/- .002]	9.0



- 1 RECOMMENDED SPARE PARTS
- 2 REFER TO SUPPLIED INSTRUCTION SHEET FOR CLEANING, LUBRICATION AND STORAGE OF APPLICATOR.
- 3 APPLY PART NUMBER 1-23419-5 LOCTITE TO THREADS OF ITEMS 180. APPLY PART NUMBER 2-23419-6 LOCTITE TO THREADS OF ITEM 242.
- 4 CRIMP HEIGHT REFERENCE SETTING WAS THE SETTING USED WHEN THE APPLICATOR WAS QUALIFIED AT THE FACTORY. ADJUSTMENT MAY BE NECESSARY WHEN RUNNING APPLICATOR IN THE FIELD.
- 5 TERMINAL LUBRICANT IS RECOMMENDED.
- 6 TERMINAL PITCH NOT COMPATIBLE WITH MECHANICAL FEED.
- 7. UNLESS SPECIFIED OTHERWISE TORQUE VALUES SHALL BE USED PER DOCUMENT, 101-35000.

***WARNING**
ON INSTALLATION, SET WIRE DISC TO CRIMP HEIGHT REFERENCE SETTING FOR LARGEST WIRE SIZE. CRIMP HEIGHT REFERENCE SETTINGS GREATER THAN THE VALUE SHOWN MAY CAUSE DAMAGE TO THE CRIMP TOOLING, REFER TO THE INSTRUCTION SHEET FOR PROPER SETUP AND ADJUSTMENTS.

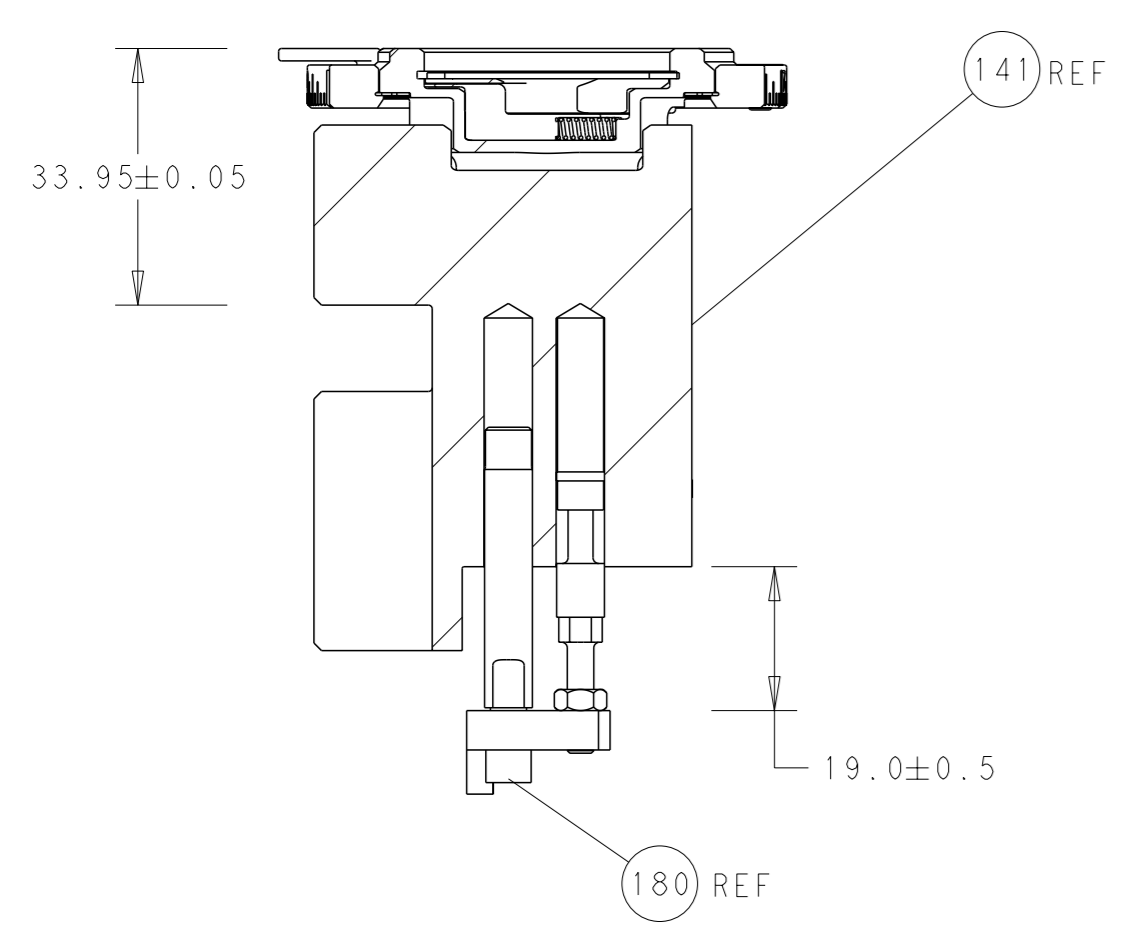
PACIFIC VERSION
Shown on sheets 3 of 4 & 4 of 4
(Atlantic version shown on sheets 1 of 4 & 2 of 4)

LOC	DIST	REVISIONS					
A	66	P	LY#	DESCRIPTION	DATE	OWN	APVD
-	-	-	-	SEE SHEET 1	-	-	-

3	-	1	2119082-9	CAM, SNAIL, INSULATION ADJUSTMENT	244
	-	1	2079764-1	WASHER, WAVE SPRING, CREST-TO-CREST	243
	-	1	2119083-1	RETAINER, INSULATION DIAL	242
	-	1	2844940-4	AIR FEED MODULE	238
	-	1	1-18028-0	WASHER, FLAT, REG M8	192
	-	2	2168083-1	SCR, SKT HD CAP, RoHS, M3 X 8.0	191
3	-	4	2079383-9	SCR, BHSC, RoHS (M6 X 20)	186
	-	1	1752354-2	STANDOFF, HOLD-DOWN	180
	-	1	6-993111-6	PIN, SLOTTED SPRING 3.0 X 14.0	177
	-	1	8-22280-7	SPRING, COMPRESSION	176
	-	1	1752353-2	GUIDE PIN, HOLDDOWN	175
	-	1	1901680-2	GUIDE PIN, HOLDDOWN	174
	REF	-	994970-2	COUNTER, MAGNETIC	164
	-	1	2119641-2	FEED CAM, AIR FEED	152
	-	1	2168083-8	SCR, SKT HD CAP, RoHS, M4 X 16	144
	-	1	2119656-6	APPLICATOR BASIC ASSEMBLY, EF	141
	-	1	1803518-1	RAM ASSEMBLY, EF PACIFIC	140
5	-	1	2119955-2	ASSY, LUBRICATOR, END FEED	84
	-	1	455888-5	SPACER, CRIMPER	82
	-	1	1803607-4	DOCUMENTATION PACKAGE	71
	-	2	3-18032-3	SCR, SET, FLT PNT, M3 X 20.0	70
	-	1	2119740-1	TAG, IDENTIFICATION	67
	-	2	2168078-1	SCREW, DRIVE, RH, RoHS, 2 x .188	66
	-	1	1901681-1	HOLDDOWN, TERMINAL	65
	-	1	5-18022-5	SCR, HEX HD CAP, M4 X 6.0	59
	-	4	2168400-4	SHCS, LOW HEAD, RoHS, M4 X 8	57
	-	2	2-2168083-6	SCR, SKT HD CAP, RoHS, M4 X 18	56
	-	2	5018030-1	NUT, HEX, REG, RoHS, M3	54
	-	2	986965-8	NUT, LOCK, HEX, TORQUE (M4)	53
	-	1	1-5018030-0	NUT, HEX, REG, RoHS, M3.5	52
	-	1	2063961-9	FEED FINGER	51
	-	1	18023-9	SCR, SKT HD CAP M4 X 6.0	49
	-	1	1803602-1	SCR, BHSC, RoHS (M8 X 25)	41
	-	8	1-18028-2	WASHER, FLAT, REG M4	33
	-	2	2168083-9	SCR, SKT HD CAP, RoHS, M4 X 20	31
	-	2	2168083-2	SCR, SKT HD CAP, RoHS, M4 X 8.0	29
	-	1	690455-2	STRIPPER, FRONT CASTING	27
	-	2	1-2168083-6	SCR, SKT HD CAP, RoHS, M4 X 35	25
	-	1	1752371-5	PLATE, STRIP GUIDE	24
	-	2	2-22281-3	SPRING, COMPRESSION	22
	-	1	1633168-1	ARM, STOCK DRAG	21
	-	1	1-464452-1	DRAG, STOCK	20
	-	1	1-1901696-5	STRIP GUIDE, REAR	19
	-	1	1-1901695-5	STRIP GUIDE, FRONT	18
	-	1	1-240641-6	SPACER	16
	-	1	1752360-1	SPACER, HOLD-DOWN	13
1	-	1	240644-9	PLATE, REAR SHEAR	11
	-	-	-	-	10
1	-	1	5-690482-4	PLATE, FRONT SHEAR	9
1	1	1	1-1803615-7	ANVIL, COMBINATION, END FEED	8
1	-	1	2217206-5	BLADE, SLUG	7
	-	-	-	-	6
	-	1	5-240641-7	SPACER	5
	-	1	3-238011-1	BLOCK, CRIMPER SPACER	4
1	1	1	2-1803017-7	CRIMPER, INSULATION F	3
	-	1	455888-5	SPACER, CRIMPER	2
1	1	1	456414-5	CRIMPER, WIRE	1

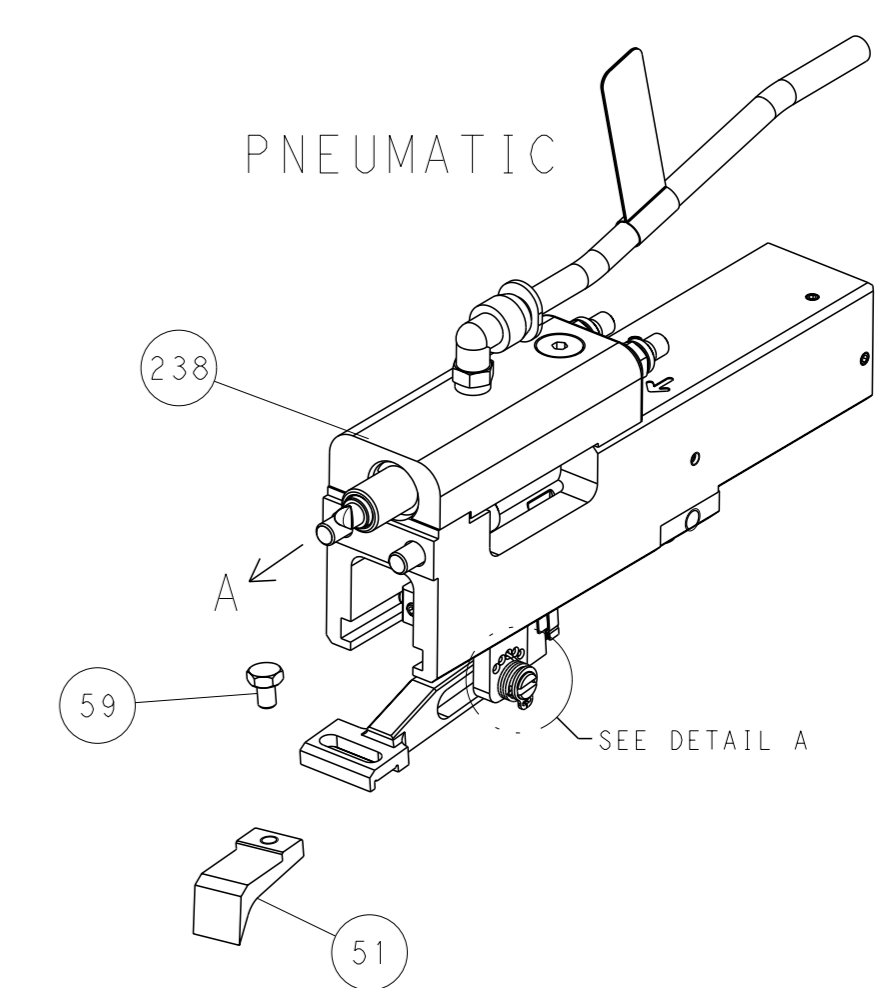
<small>THE DRAWING IS UNPUBLISHED. IT IS SUBJECT TO CHANGE AND THE DRAWING AND EXISTING DIMENSIONS SHOULD BE CONTACTED FOR THE LATEST REVISION.</small>		DWN T. BROOKENS 13JUL2018 CHK M. HERR 13JUL2018 APVD C. TOPPER 13JUL2018	STE TE Connectivity Harrisburg, PA 17105-3608
DIMENSIONS: mm 0 PLC ± 1 PLC ± 2 PLC ± 3 PLC ± 4 PLC ± ANGLES FINISH ±		TOLERANCES UNLESS OTHERWISE SPECIFIED: ± ± ± ± ±	NAME Ocean End Feed Applicator SIZE CAGE CODE DRAWING NO A1 00779 C=2150935 RESTRICTED TO
MATERIAL:		WEIGHT:	SCALE 1:1 SHEET 3 OF 4 REV B

LOC	DIST	REVISIONS			
A	66	REV	DATE	OWN	APVD
		-	SEE SHEET 1	-	-

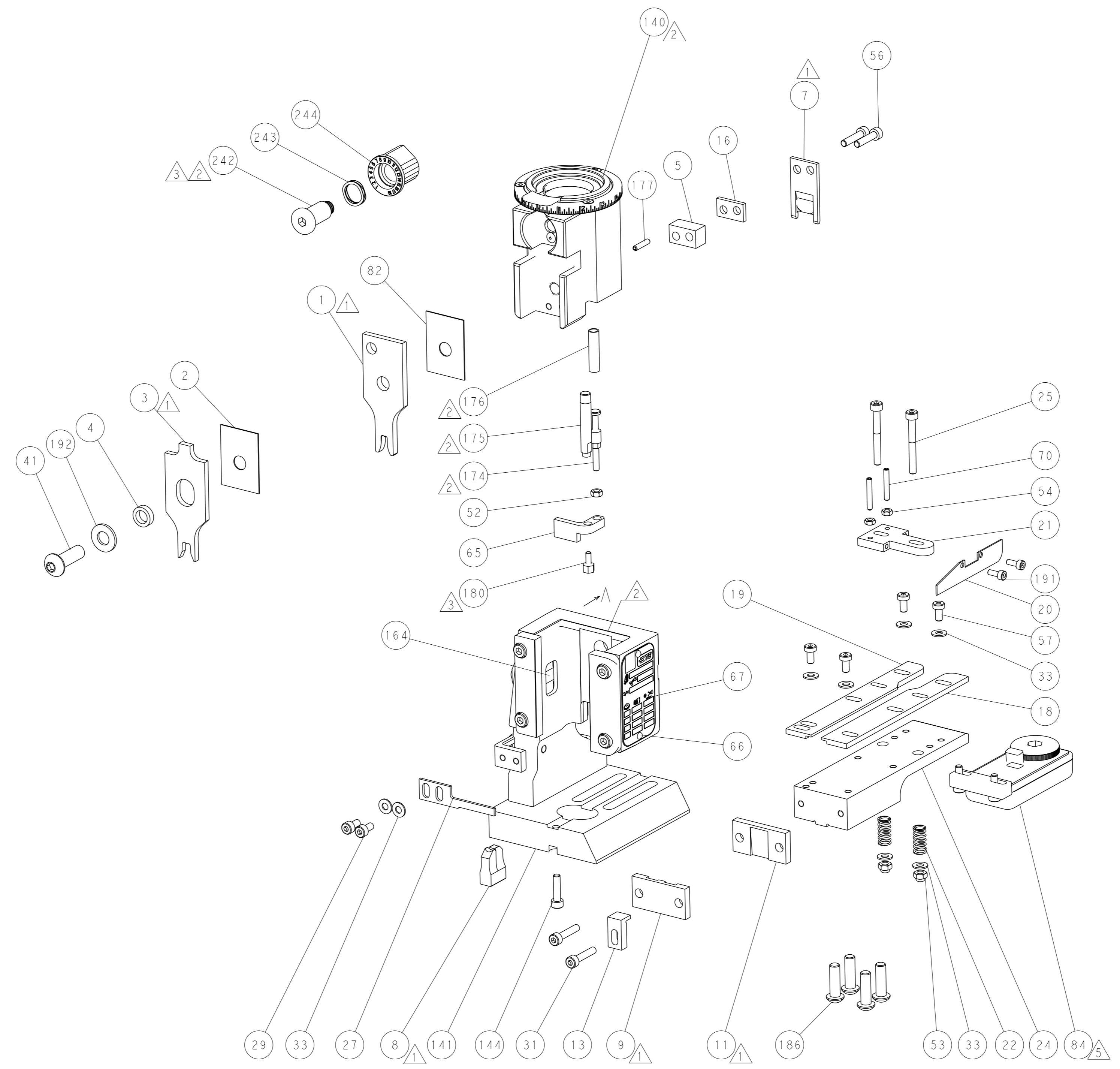
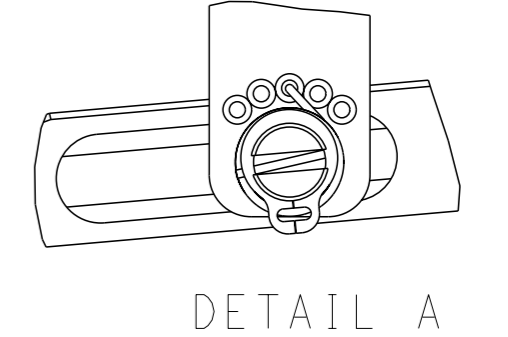


RAM AND HOLDDOWN SET-UP

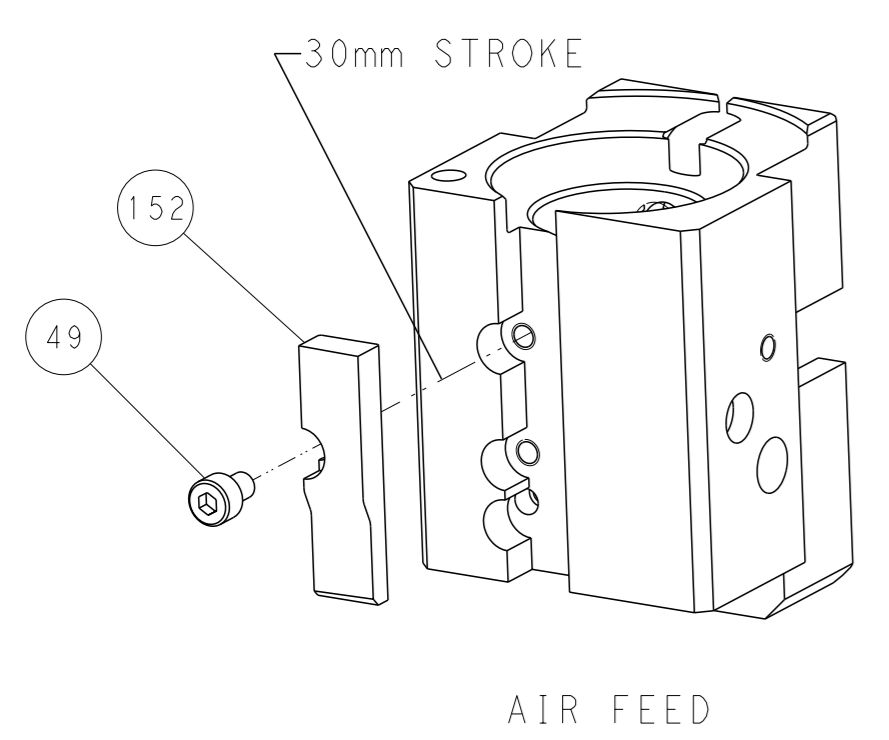
FEED TYPE



FEED SPRING SETTING POSITION



CAM POSITION



PACIFIC VERSION
 Shown on sheets 3 of 4 & 4 of 4
 (Atlantic version shown on sheets 1 of 4 & 2 of 4)

<small>THIS DRAWING IS A CONTROLLED DOCUMENT FROM TYCO ELECTRONICS CORPORATION. IT IS SUBJECT TO CHANGE AND THE USER'S RESPONSIBILITY TO OBTAIN THE LATEST REVISION SHOULD BE CONTACTED FOR THE LATEST REVISION.</small>		DWN T. BROOKENS 13JUL2018 CHK M. HERR 13JUL2018 APVD C. TOPPER 13JUL2018	TE Connectivity Harrisburg, PA 17105-3608
DIMENSIONS: mm TOLERANCES UNLESS OTHERWISE SPECIFIED: 0 PLC ± 1 PLC ± 2 PLC ± 3 PLC ± 4 PLC ± ANGLES FINISH *		NAME Ocean End Feed Applicator APPLICATION SPEC WEIGHT SCALE 1:1	SIZE CAGE CODE DRAWING NO. RESTRICTED TO A 00779 C=2150935 Customer Accessible Production Drawing SHEET 4 OF 4 REV B