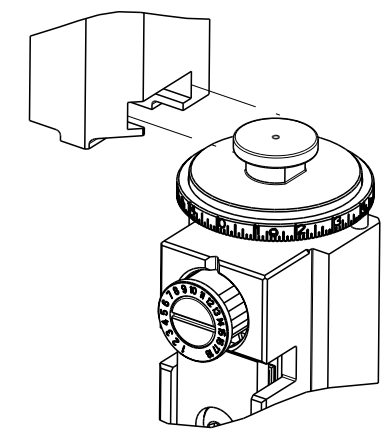


PART NUMBER	REVISION	DESCRIPTION	FEED TYPE
2150908-1	D	FINE CRIMP HEIGHT ADJUST	MECHANICAL
2150908-2	D	FINE CRIMP HEIGHT ADJUST	PNEUMATIC
7-2150908-1	D	MECHANICAL AND CRIMP TOOLING KIT	MECHANICAL
7-2150908-2	D	PNEUMATIC AND CRIMP TOOLING KIT	PNEUMATIC
7-2150908-7	C	CRIMP TOOLING KIT	-

ATLANTIC VERSION TERMINATOR INTERFACE ADAPTER



APPLICATOR DATA		
CRIMP	SIZE	TYPE
WIRE	2.54 mm [.100]	F
INSUL	3.05 mm [.120]	OV
APPL INSTRUCTIONS 408-35043		

TERMINAL DATA: TE TERMINAL		TE CRIMP SPECIFICATION	
TERMINAL NAME: .250 (6.3) SERIES FLAG POS. LOCK			
WIRE STRIP LENGTH 5.00-6.00 mm [.197-.236 IN]		INSULATION DIAMETER RANGE Ø2.20-3.30 mm [.087-.130 IN]	
TERMINAL APPLICATION SPECIFICATION 114-20083			
TERMINALS APPLIED			
TE TERMINAL	TE TERMINAL	TE TERMINAL	TE TERMINAL
926820-1	926820-2	926820-3	926820-4
926820-5	926820-6	926820-7	926820-8

WIRE SIZE	CRIMP HEIGHT mm [INCH]	CRIMP HEIGHT REFERENCE SETTING
1.50mm2	1.60 +/- 0.03 [1.063 +/- .001]	4.5
1.00mm2	1.45 +/- 0.03 [1.057 +/- .001]	6.1
0.75mm2	1.35 +/- 0.03 [1.053 +/- .001]	7.2
0.50mm2	1.27 +/- 0.03 [1.050 +/- .001]	8.1

- RECOMMENDED SPARE PARTS
- REFER TO SUPPLIED INSTRUCTION SHEET FOR CLEANING, LUBRICATION AND STORAGE OF APPLICATOR.
- APPLY PART NUMBER 2-23419-6 LOCTITE TO THREADS OF ITEM 242.
- CRIMP HEIGHT REFERENCE SETTING WAS THE SETTING USED WHEN THE APPLICATOR WAS QUALIFIED AT THE FACTORY. ADJUSTMENT MAY BE NECESSARY WHEN RUNNING APPLICATOR IN THE FIELD.
- TERMINAL LUBRICANT IS RECOMMENDED.
- UNLESS SPECIFIED OTHERWISE TORQUE VALUES SHALL BE USED PER DOCUMENT, 101-35000.
- WIRE RANGE 0.5mm2 IS NOT CAPABLE FOR FORCE MONITORING. IF CRIMP FORCE MONITORING IS ESSENTIAL, 0.5mm2 IS NOT ALLOWED FOR THIS TERMINAL. THIS WAS TAKEN FROM TERMINAL DRAWING.

**\*WARNING**  
ON INSTALLATION, SET WIRE DISC TO CRIMP HEIGHT REFERENCE SETTING FOR LARGEST WIRE SIZE. CRIMP HEIGHT REFERENCE SETTINGS GREATER THAN THE VALUE SHOWN MAY CAUSE DAMAGE TO THE CRIMP TOOLING, REFER TO THE INSTRUCTION SHEET FOR PROPER SETUP AND ADJUSTMENTS.

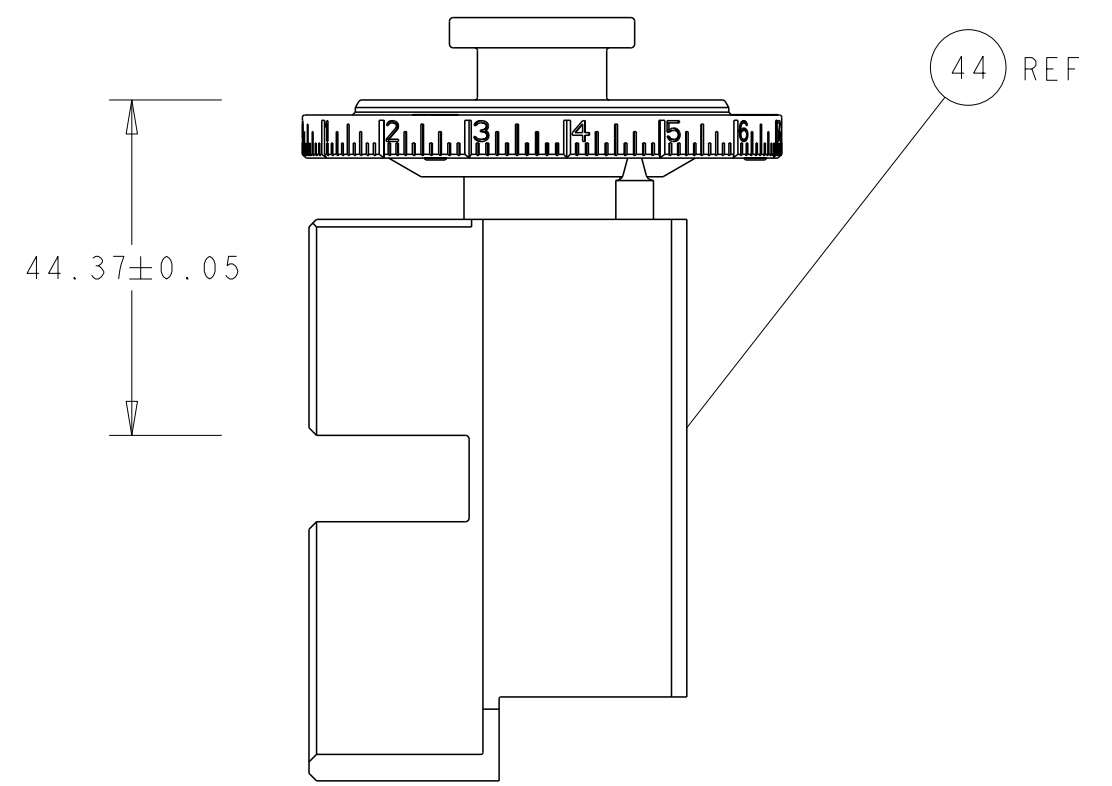
LOC	DIST	REVISIONS					
		P	LY#	DESCRIPTION	DATE	OWN	APVD
A	66			RELEASED	10AUG2018	KH	GB
				ECR-18-016502	17OCT2018	MEH	GB
				ECR-19-009707	20JUN2019	TB	GB
				ECR-20-011943	25AUG2020	JAH	RR

-	1	-	1	-	2119641-1	FEED CAM, AIR FEED	248	
-	1	1	1	1	2119082-7	CAM, SNAIL, INSULATION ADJUSTMENT	244	
-	1	1	1	1	2079764-1	WASHER, WAVE SPRING, CREST-TO-CREST	243	
-	1	1	1	1	2119083-1	RETAINER, INSULATION DIAL	242	
-	-	1	-	1	2119580-1	MECHANICAL FEED ASSEMBLY	239	
-	1	-	1	-	2844940-3	AIR FEED MODULE	238	
-	1	1	1	1	1-455888-7	SPACER, CRIMPER	185	
-	REF	REF	REF	REF	994970-2	COUNTER, MAGNETIC	164	
-	1	1	1	1	1-18028-2	WASHER, FLAT, REG M4	109	
-	1	1	1	1	980371-4	SCR, SKT HD SHLDR 5.0 DIA X 6.0	105	
-	2	2	2	2	2-18032-5	SCR, SET, FLT PNT, M5 X 20.0	104	
-	2	2	2	2	2168083-4	SCR, SKT HD CAP, RoHS, M5 X 10.0	89	
-	2	2	2	2	2168400-1	SHCS, LOW HEAD, RoHS, M4 X 12	86	
-	2	2	2	2	2168083-1	SCR, SKT HD CAP, RoHS, M3 X 8.0	85	
-	1	1	1	1	2119955-5	ASSY, LUBRICATOR, SIDE FEED	84	
-	1	1	1	1	1-2168083-3	SCR, SKT HD CAP, RoHS, M3 X 16	83	
-	1	1	1	1	455888-5	SPACER, CRIMPER	82	
-	1	1	1	1	2-2168083-1	SCR, SKT HD CAP, RoHS, M3 X 25	80	
-	1	1	1	1	1803203-1	BLOCK, FRONT DEPRESSOR	77	
-	1	1	1	1	1803607-4	DOCUMENTATION PACKAGE	71	
-	1	1	1	1	2119791-9	DEPRESSOR, WIRE	70	
-	1	1	1	1	2119943-1	WASHER, SPACER	69	
-	1	1	1	1	2119740-1	TAG, IDENTIFICATION	67	
-	2	2	2	2	2168078-1	SCREW, DRIVE, RH, RoHS, 2 x .188	66	
-	2	2	2	2	1-2079383-6	SCR, BHSC, RoHS (M4 X 10)	60	
-	1	1	1	1	5-18022-5	SCR, HEX HD CAP, M4 X 6.0	59	
-	1	1	1	1	224716-6	PAWL, FEED	58	
-	2	2	2	2	1-2168083-0	SCR, SKT HD CAP, RoHS, M4 X 10	56	
-	1	2	1	2	18023-9	SCR, SKT HD CAP M4 X 6.0	49	
-	-	1	-	1	2119652-1	FEED CAM, PRE FEED	48	
-	-	1	-	1	2119653-1	FEED CAM, POST FEED	47	
-	1	1	1	1	2-2119655-9	APPLICATOR BASIC ASSEMBLY, EF	46	
-	1	1	1	1	1803517-2	RAM ASSEMBLY, EF ATLANTIC	44	
-	1	1	1	1	1803602-2	SCR, BHSC, RoHS (M8 X 40)	41	
-	2	2	2	2	1-18028-2	WASHER, FLAT, REG M4	33	
-	1	1	1	1	2217981-1	BLOCK, BASE	32	
-	2	2	2	2	2168083-2	SCR, SKT HD CAP, RoHS, M4 X 8.0	29	
-	1	1	1	1	356835-1	LEVER, DRAG RELEASE	28	
-	1	1	1	1	690455-9	STRIPPER, FRONT CASTING	27	
-	1	1	1	1	2217982-1	PLATE, STRIP GUIDE	24	
-	2	2	2	2	2-22281-3	SPRING, COMPRESSION	22	
-	1	1	1	1	240792-1	DRAG, TERMINAL	20	
-	1	1	1	1	662657-1	STRIP, GUIDE, REAR	19	
-	1	1	1	1	690438-1	FRONT STRIP GUIDE	18	
-	4	4	4	4	1-2079383-1	SCR, BHSC, RoHS (M6 X 12)	17	
-	1	1	1	1	2217983-1	PLATE, SHEAR	13	
-	1	1	1	1	6-22279-4	SPRING, COMPRESSION	12	
-	1	1	1	1	1-356885-6	STOP, SHEAR	11	
-	-	-	-	-	-	-	10	
-	1	1	1	1	662631-1	SHEAR, FLOATING	9	
-	1	2	2	1	1803736-1	ANVIL	8	
-	1	1	1	1	662630-3	BLADE, FRONT SLUG	7	
-	1	1	1	1	662632-2	DEPRESSOR, SHEAR	6	
-	1	1	1	1	662630-4	BLADE, FRONT SLUG	5	
-	1	1	1	1	238011-2	BLOCK, CRIMPER SPACER	4	
-	1	2	2	1	2-2119785-0	CRIMPER, INSULATION OVERLAP PREMIUM	3	
-	1	1	1	1	455888-4	SPACER, CRIMPER	2	
-	1	2	2	1	3-1803454-9	CRIMPER, WIRE	1	
-	77	72	71	2	-1	PART NO	DESCRIPTION	ITEM NO

ATLANTIC VERSION  
Shown on sheets 1 of 4 & 2 of 4  
(Pacific version shown on sheets 3 of 4 & 4 of 4)

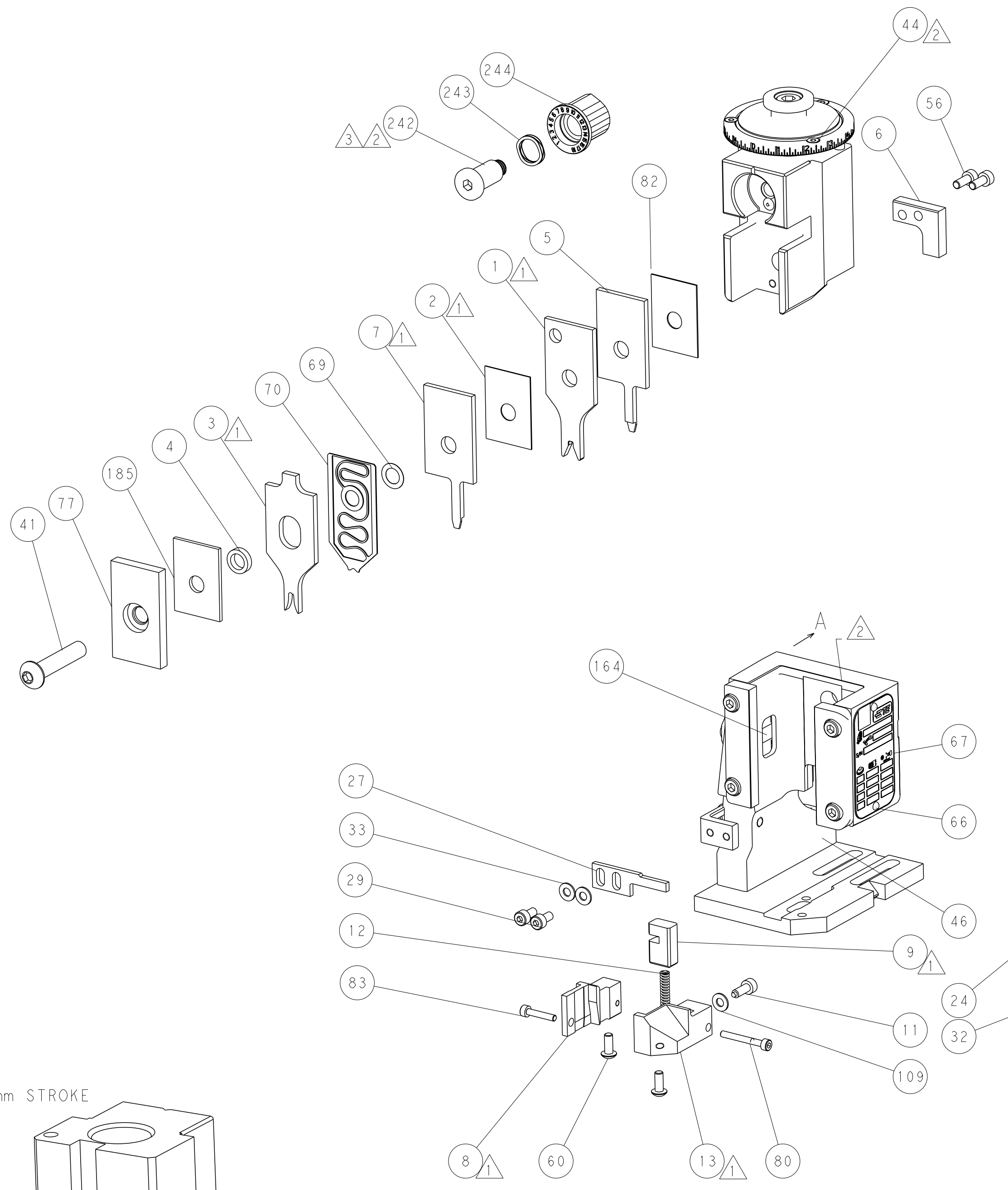
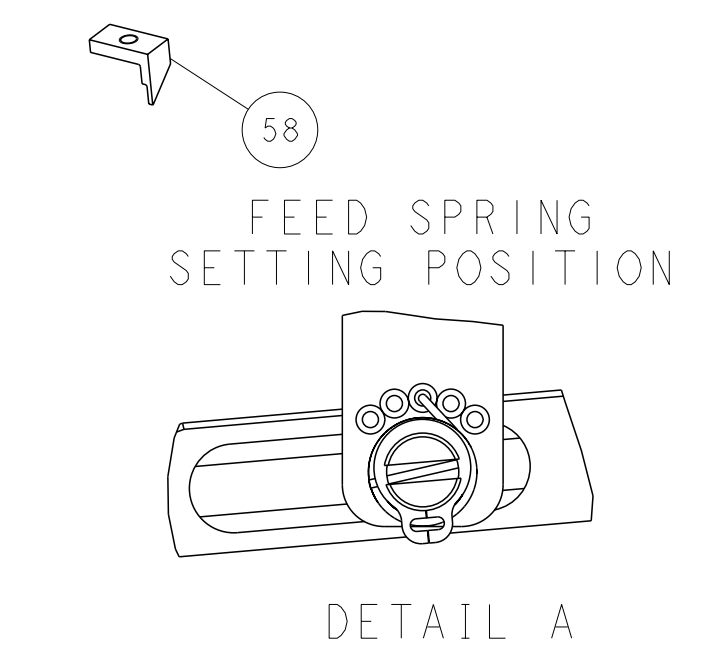
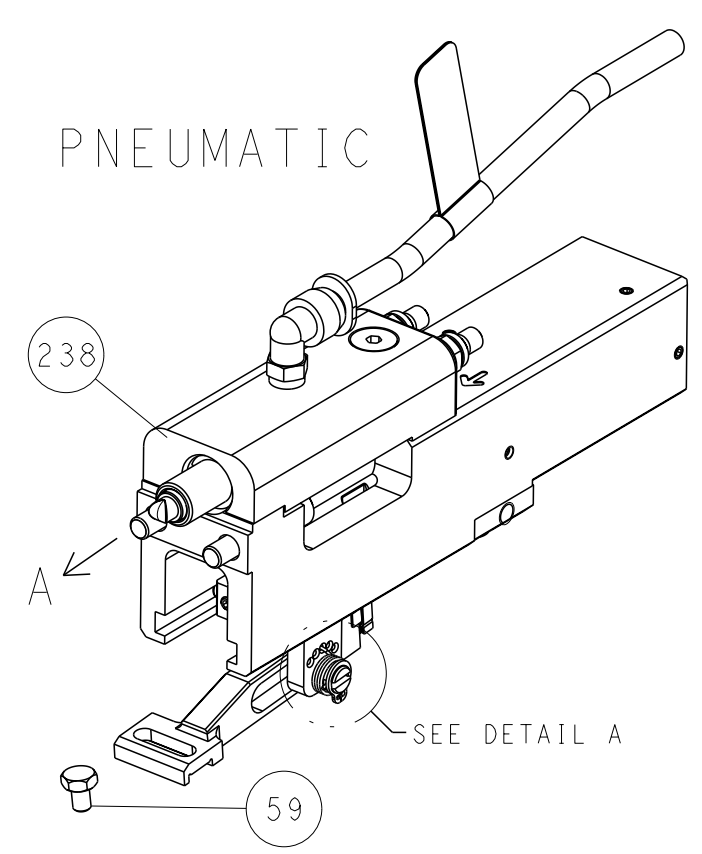
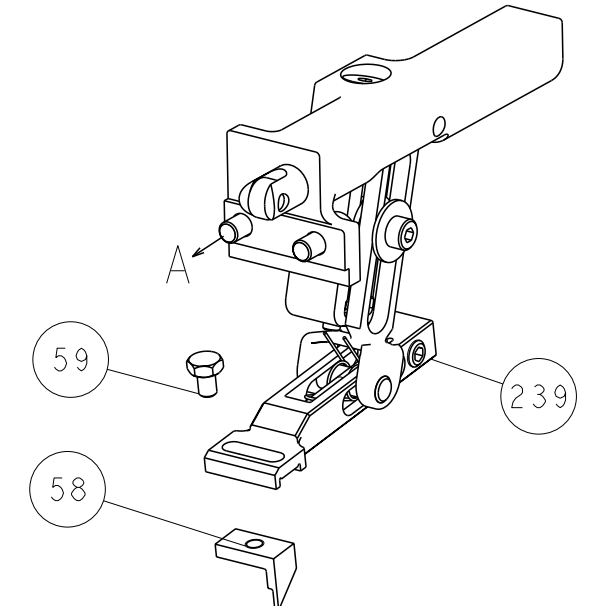
DIMENSIONS:		TOLERANCES UNLESS OTHERWISE SPECIFIED:		APPROVED:		NAME:	
mm	0 PLC ±	1 PLC ±	2 PLC ±	3 PLC ±	4 PLC ±	APVD	NAME
	ANGLES	FINISH					
MATERIAL				WEIGHT		SCALE	SHEET
						1:1	1 OF 4

LOC		DIST		REVISIONS			
A	66	P	LYR	DESCRIPTION	DATE	OWN	APVD
		-		SEE SHEET 1			

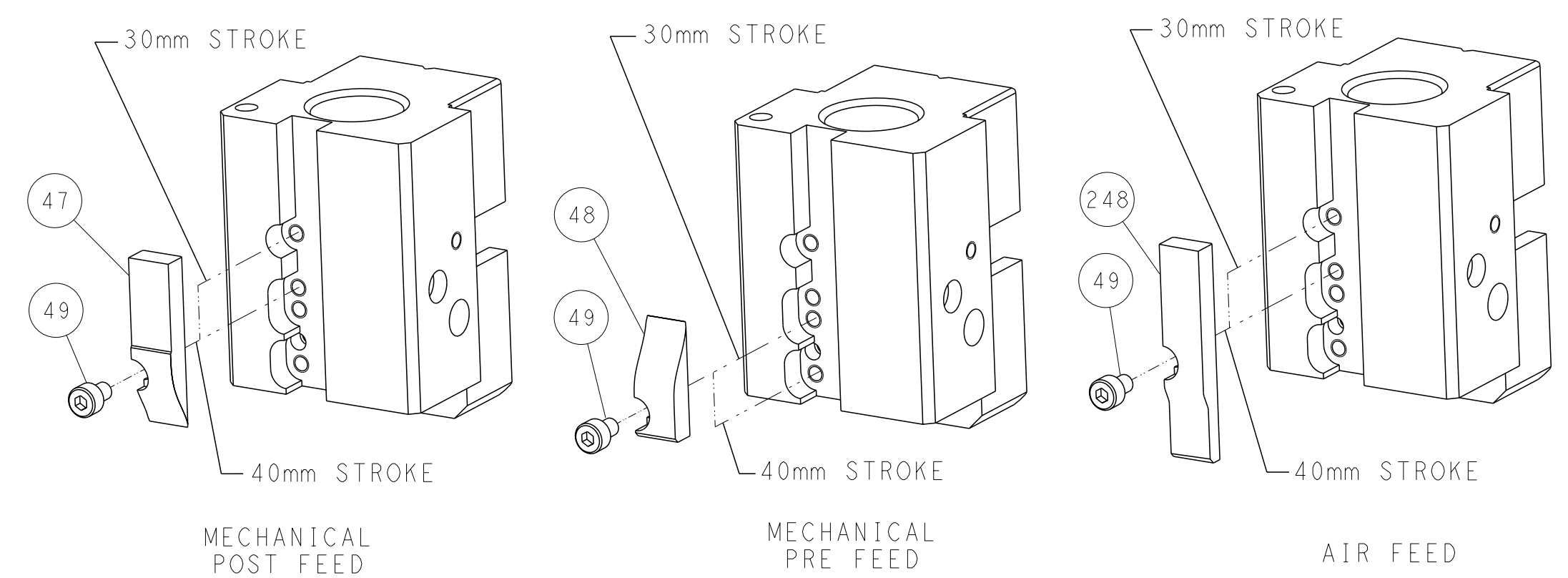


RAM SET-UP

FEED TYPE  
MECHANICAL



CAM POSITIONS

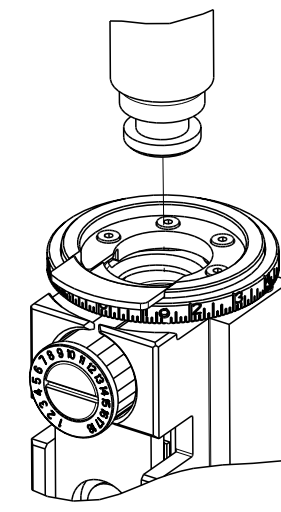


ATLANTIC VERSION  
 Shown on sheets 1 of 4 & 2 of 4  
 (Pacific version shown on sheets 3 of 4 & 4 of 4)

<small>THIS DRAWING IS UNPUBLISHED. RELEASED FOR PUBLICATION BY TYCO ELECTRONICS CORPORATION. ALL RIGHTS RESERVED.</small>		OWN: K. HUANG CHK: L. ZHANG APVD: L. ZHANG PRODUCT SPEC: - APPLICATION SPEC: - WEIGHT: - MATERIAL: -	DATE: 27MAR2018 DATE: 27MAR2018 DATE: 27MAR2018 PRODUCT SPEC: - APPLICATION SPEC: - WEIGHT: - MATERIAL: -	NAME: Ocean End Feed Applicator SIZE: A1 CAGE CODE: 00779 DRAWING NO: C-2150908 SCALE: 1:1 SHEET: 2 of 4 REV: D	TE Connectivity Harrisburg, PA 17105-3608
--	--	--	---	---	--

THIS DRAWING IS UNPUBLISHED.	RELEASED FOR PUBLICATION	20	
COPYRIGHT © BY TYCO ELECTRONICS CORPORATION. ALL RIGHTS RESERVED.			
PART NUMBER	REVISION	DESCRIPTION	FEED TYPE
2-2150908-1	D	FINE CRIMP HEIGHT ADJUST	MECHANICAL
2-2150908-2	D	FINE CRIMP HEIGHT ADJUST	PNEUMATIC
7-2150908-7	C	CRIMP TOOLING KIT	-

PACIFIC VERSION TERMINATOR  
INTERFACE ADAPTER



APPLICATOR DATA		
CRIMP	SIZE	TYPE
WIRE	2.54 mm [1.100]	F
INSUL	3.05 mm [1.200]	OV
APPL INSTRUCTIONS 408-35043		

TERMINAL DATA: TE TERMINAL		TE CRIMP SPECIFICATION	
TERMINAL NAME: .250 (6.3) SERIES FLAG POS. LOCK			
WIRE STRIP LENGTH		INSULATION DIAMETER RANGE	
5.00-6.00 mm [1.97-.236 IN]		Ø2.20-3.30 mm [0.087-.130 IN]	
TERMINAL APPLICATION SPECIFICATION	114-20083	-	-
TERMINALS APPLIED			
TE TERMINAL	TE TERMINAL	TE TERMINAL	TE TERMINAL
926820-1	926820-2	926820-3	926820-4
926820-2	926820-6	926820-7	926820-8

WIRE SIZE	CRIMP HEIGHT mm [INCH]	CRIMP HEIGHT REFERENCE SETTING
1.50mm2	1.60 +/- 0.03 [0.063 +/- .001]	4.5
1.00mm2	1.45 +/- 0.03 [0.057 +/- .001]	6.1
0.75mm2	1.35 +/- 0.03 [0.053 +/- .001]	7.2
0.50mm2	1.27 +/- 0.03 [0.050 +/- .001]	8.1

- RECOMMENDED SPARE PARTS
- REFER TO SUPPLIED INSTRUCTION SHEET FOR CLEANING, LUBRICATION AND STORAGE OF APPLICATOR.
- APPLY PART NUMBER 2-23419-6 LOCTITE TO THREADS OF ITEM 242.
- CRIMP HEIGHT REFERENCE SETTING WAS THE SETTING USED WHEN THE APPLICATOR WAS QUALIFIED AT THE FACTORY. ADJUSTMENT MAY BE NECESSARY WHEN RUNNING APPLICATOR IN THE FIELD.
- TERMINAL LUBRICANT IS RECOMMENDED.
- 6. UNLESS SPECIFIED OTHERWISE TORQUE VALUES SHALL BE USED PER DOCUMENT, 101-35000.
- WIRE RANGE 0.5mm2 IS NOT CAPABLE FOR FORCE MONITORING. IF CRIMP FORCE MONITORING IS ESSENTIAL, 0.5mm2 IS NOT ALLOWED FOR THIS TERMINAL. THIS WAS TAKEN FROM TERMINAL DRAWING.

**\*WARNING**  
ON INSTALLATION, SET WIRE DISC TO CRIMP HEIGHT REFERENCE SETTING FOR LARGEST WIRE SIZE. CRIMP HEIGHT REFERENCE SETTINGS GREATER THAN THE VALUE SHOWN MAY CAUSE DAMAGE TO THE CRIMP TOOLING, REFER TO THE INSTRUCTION SHEET FOR PROPER SETUP AND ADJUSTMENTS.

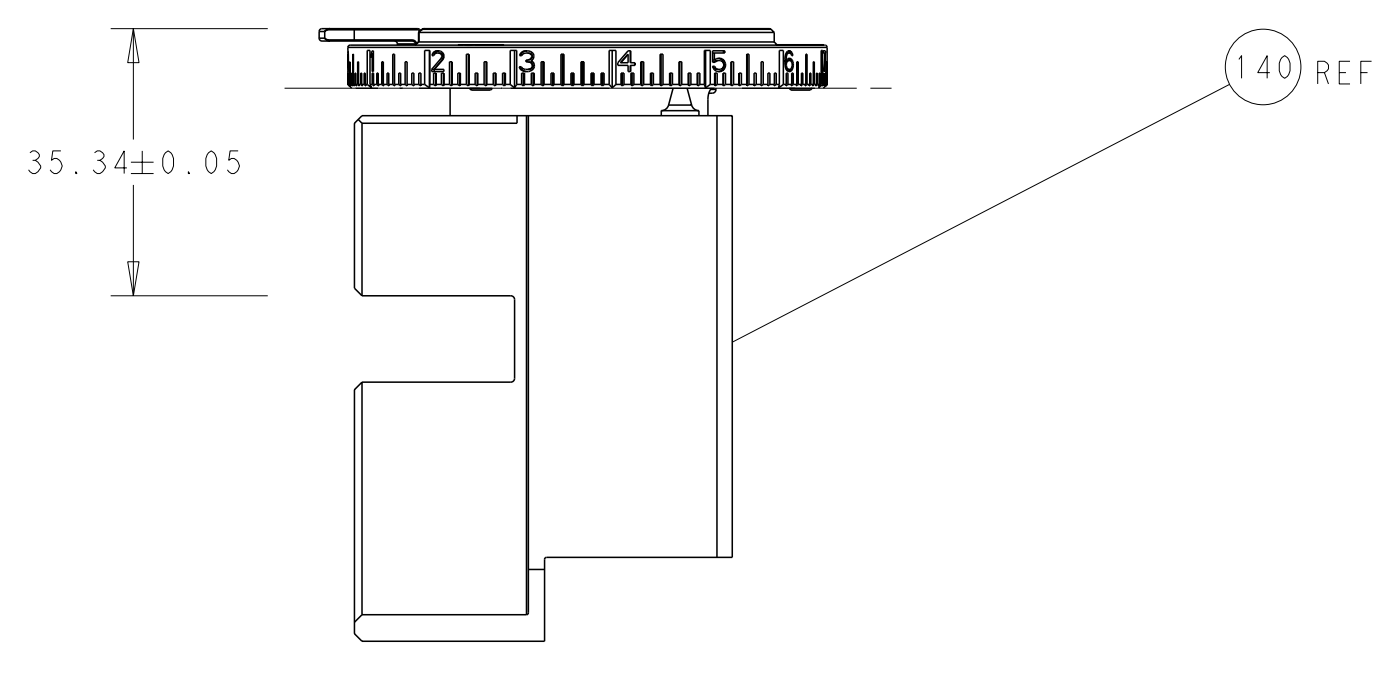
LOC	DIST	REVISIONS			
A	66	REV	DATE	BY	APPV
-	-	SEE SHEET 1	-	-	-

	-	1	1	2119082-7	CAM, SNAIL, INSULATION ADJUSTMENT	244
	-	1	1	2079764-1	WASHER, WAVE SPRING, CREST-TO-CREST	243
	-	1	1	2119083-1	RETAINER, INSULATION DIAL	242
	-	-	1	2119580-1	MECHANICAL FEED ASSEMBLY	239
	-	1	-	2844940-3	AIR FEED MODULE	238
	-	4	4	2079383-9	SCR, BHSC, RoHS (M6 X 20)	186
	-	1	1	1-455888-7	SPACER, CRIMPER	185
	-	REF	REF	994970-2	COUNTER, MAGNETIC	164
	-	1	-	2119641-2	FEED CAM, AIR FEED	152
	-	2	2	2079383-5	SCR, BHSC, RoHS (M4 X 20)	144
	-	-	1	2119653-2	FEED CAM, POST FEED	142
	-	1	1	3-2119655-0	APPLICATOR BASIC ASSEMBLY, EF	141
	-	1	1	1803518-2	RAM ASSEMBLY, EF PACIFIC	140
	-	1	1	1-18028-2	WASHER, FLAT, REG M4	109
	-	1	1	980371-4	SCR, SKT HD SHLDR 5.0 DIA X 6.0	105
	-	2	2	2-18032-5	SCR, SET, FLT PNT, M5 X 20.0	104
	-	2	2	2168083-4	SCR, SKT HD CAP, RoHS, M5 X 10.0	89
	-	2	2	2168400-1	SHCS, LOW HEAD, RoHS, M4 X 12	86
	-	2	2	2168083-1	SCR, SKT HD CAP, RoHS, M3 X 8.0	85
	-	1	1	2119955-5	ASSY, LUBRICATOR, SIDE FEED	84
	-	1	1	1-2168083-3	SCR, SKT HD CAP, RoHS, M3 X 16	83
	-	1	1	455888-5	SPACER, CRIMPER	82
	-	1	1	2-2168083-1	SCR, SKT HD CAP, RoHS, M3 X 25	80
	-	1	1	1803203-1	BLOCK, FRONT DEPRESSOR	77
	-	1	1	1803607-4	DOCUMENTATION PACKAGE	71
	-	1	1	2119791-9	DEPRESSOR, WIRE	70
	-	1	1	2119943-1	WASHER, SPACER	69
	-	1	1	2119740-1	TAG, IDENTIFICATION	67
	-	2	2	2168078-1	SCREW, DRIVE, RH, RoHS, 2 x .188	66
	-	1	1	5-18022-5	SCR, HEX HD CAP, M4 X 6.0	59
	-	1	1	224716-6	PAWL, FEED	58
	-	2	2	1-2168083-0	SCR, SKT HD CAP, RoHS, M4 X 10	56
	-	1	2	18023-9	SCR, SKT HD CAP M4 X 6.0	49
	-	-	1	2119652-1	FEED CAM, PRE FEED	48
	-	1	1	1803602-2	SCR, BHSC, RoHS (M8 X 40)	41
	-	2	2	1-18028-2	WASHER, FLAT, REG M4	33
	-	1	1	2217981-1	BLOCK, BASE	32
	-	2	2	2168083-2	SCR, SKT HD CAP, RoHS, M4 X 8.0	29
	-	1	1	356835-1	LEVER, DRAG RELEASE	28
	-	1	1	690455-9	STRIPPER, FRONT CASTING	27
	-	1	1	2217982-1	PLATE, STRIP GUIDE	24
	-	2	2	2-22281-3	SPRING, COMPRESSION	22
	-	1	1	240792-1	DRAG, TERMINAL	20
	-	1	1	662657-1	STRIP, GUIDE, REAR	19
	-	1	1	690438-1	FRONT STRIP GUIDE	18
	-	1	1	2217983-1	PLATE, SHEAR	13
	-	1	1	6-22279-4	SPRING, COMPRESSION	12
	-	1	1	1-356885-6	STOP, SHEAR	11
	-	-	-	-	-	10
	-	1	1	662631-1	SHEAR, FLOATING	9
	1	1	1	1803736-1	ANVIL	8
	-	1	1	662630-3	BLADE, FRONT SLUG	7
	-	1	1	662632-2	DEPRESSOR, SHEAR	6
	-	1	1	662630-4	BLADE, FRONT SLUG	5
	-	1	1	238011-2	BLOCK, CRIMPER SPACER	4
	1	1	1	2-2119785-0	CRIMPER, INSULATION OVERLAP PREMIUM	3
	-	1	1	455888-4	SPACER, CRIMPER	2
	1	1	1	3-1803454-9	CRIMPER, WIRE	1

PACIFIC VERSION  
Shown on sheets 3 of 4 & 4 of 4  
(Atlantic version shown on sheets 1 of 4 & 2 of 4)

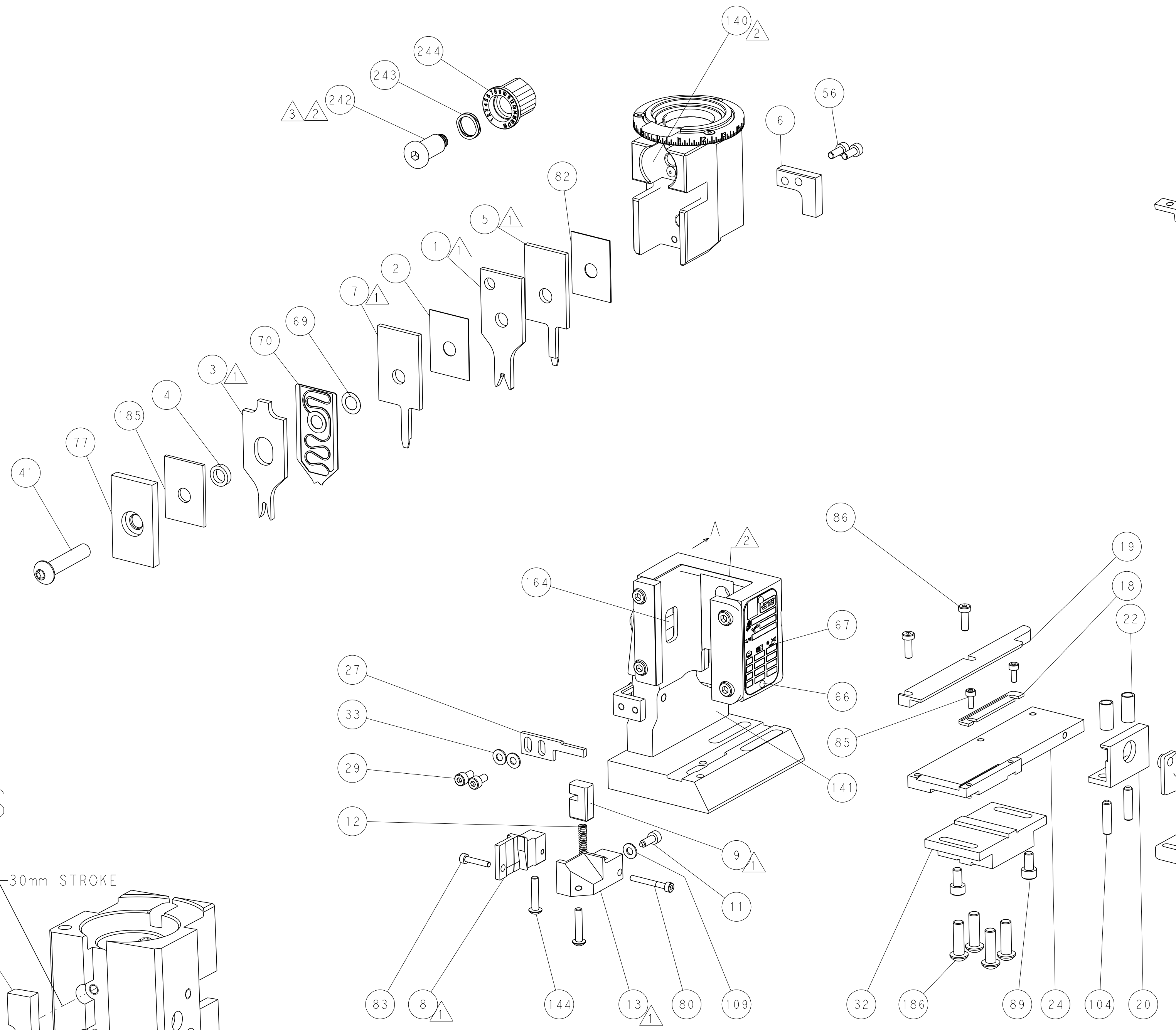
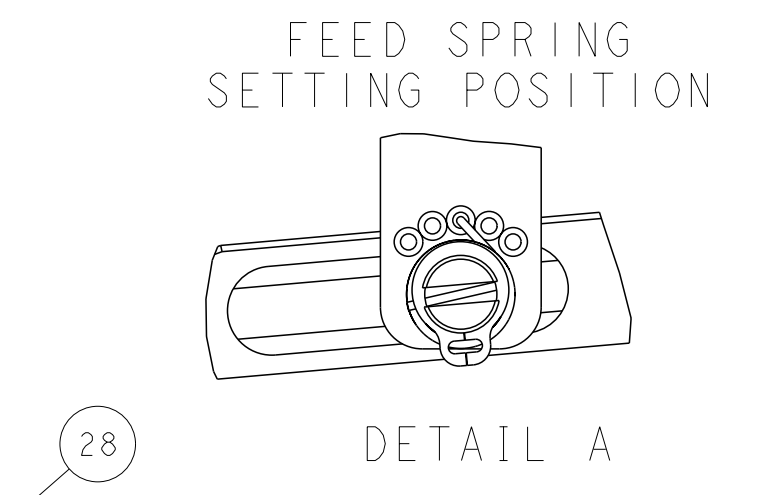
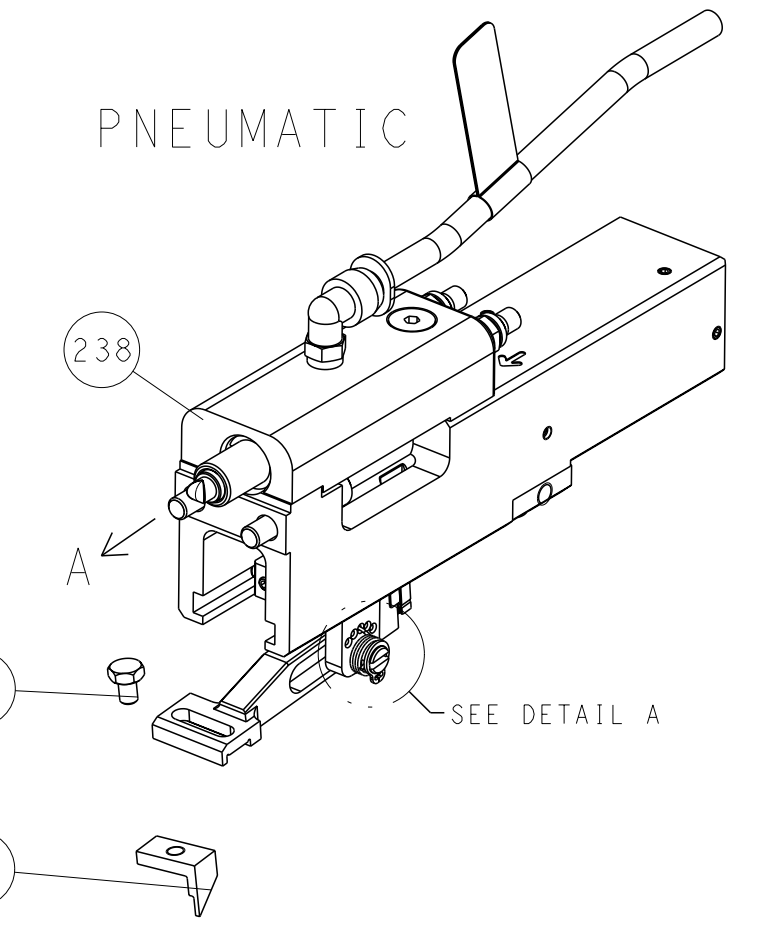
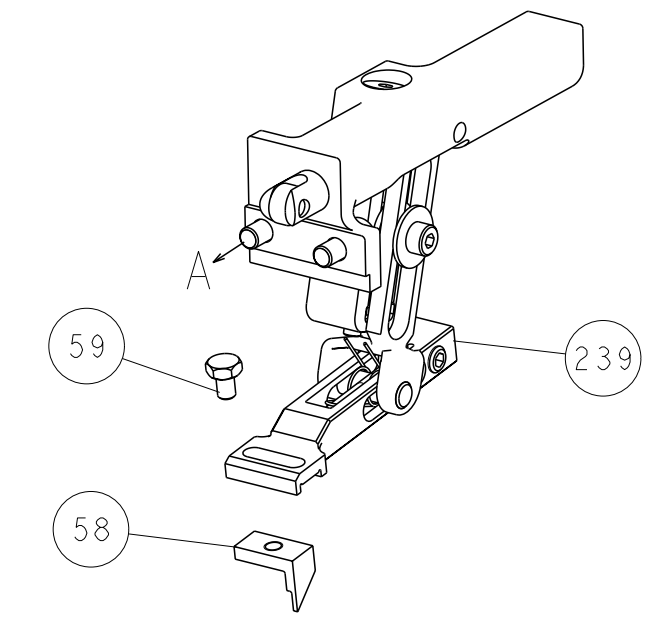
DIMENSIONS:		TOLERANCES UNLESS OTHERWISE SPECIFIED:		OWN	27MAR2018	TE Connectivity Harrisburg, PA 17105-3608
mm	0 PLC ± 1 PLC ± 2 PLC ± 3 PLC ± 4 PLC ±	±	±	CHK	27MAR2018	
MATERIAL:		FINISH:		APV	27MAR2018	NAME
				PRODUCT SPEC		Ocean End Feed Applicator
				APPLICATION SPEC		
				SIZE	CAGE CODE	DRAWING NO
				WEIGHT	A1	00779 ©=2150908
				Customer Accessible Production Drawing		SCALE 1:1 SHEET 3 of 4 REV D

LOC		DIST		REVISIONS			
A	66	P	LYR	DESCRIPTION	DATE	OWN	APVD
		-		SEE SHEET 1	-	-	-

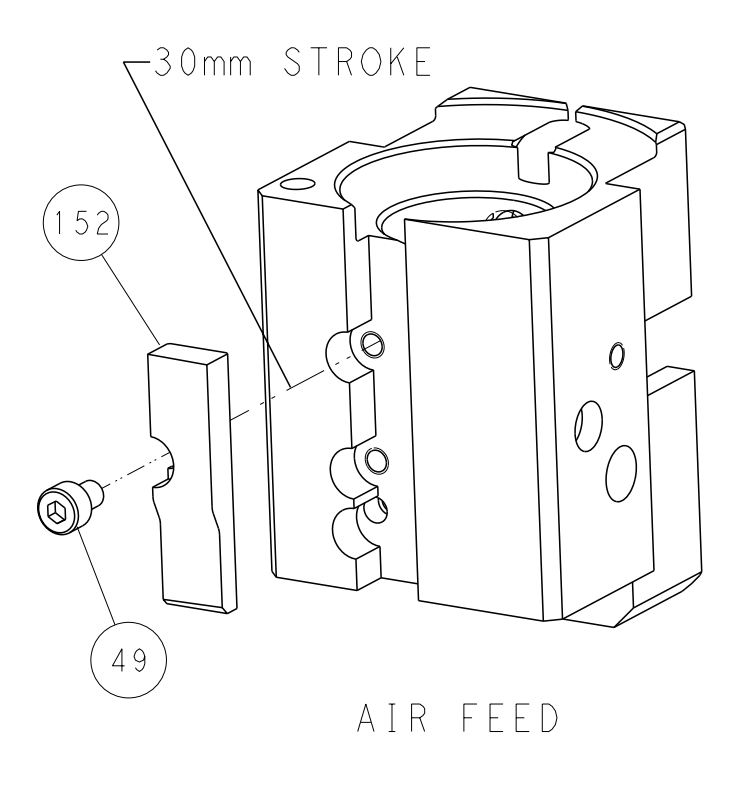
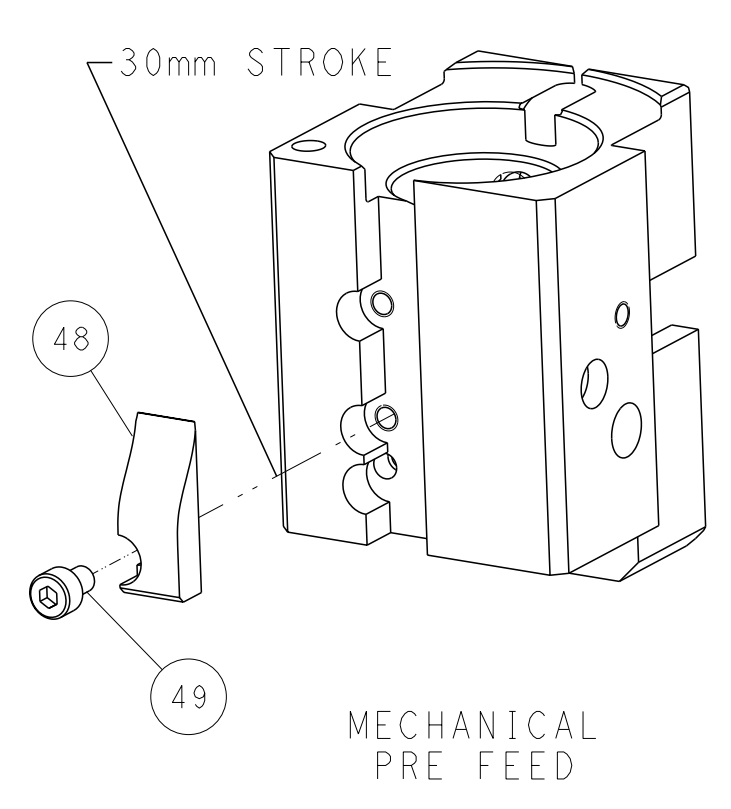
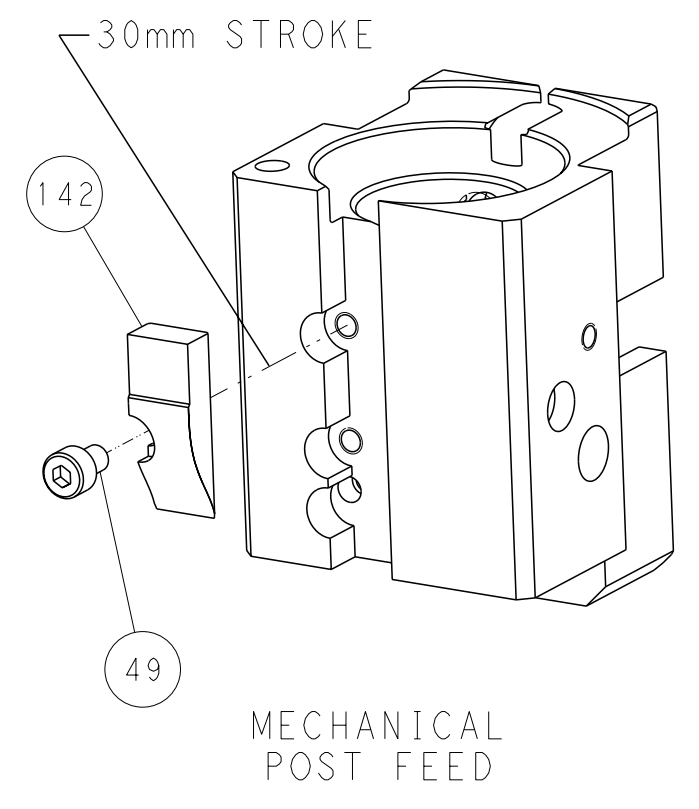


RAM SET-UP

FEED TYPE  
MECHANICAL



CAM POSITIONS



PACIFIC VERSION  
 Shown on sheets 3 of 4 & 4 of 4  
 (Atlantic version shown on sheets 1 of 4 & 2 of 4)

DIMENSIONS: mm 		TOLERANCES UNLESS OTHERWISE SPECIFIED: 0 PLC ± 1 PLC ± 2 PLC ± 3 PLC ± 4 PLC ± ANGLES ± FINISH ±		OWN: H. HUANG 27MAR2018 CHK: L. ZHANG 27MAR2018 APVD: L. ZHANG 27MAR2018 PRODUCT SPEC APPLICATION SPEC WEIGHT Customer Accessible Production Drawing		NAME: Ocean End Feed Applicator SIZE: A1 CAGE CODE: 00779 DRAWING NO: C=2150908 SCALE: 1:1 SHEET: 4 of 4 REV: D		STE TE Connectivity Harrisburg, PA 17105-3608 RESTRICTED TO	
-----------------------	--	---	--	--	--	---	--	---	--