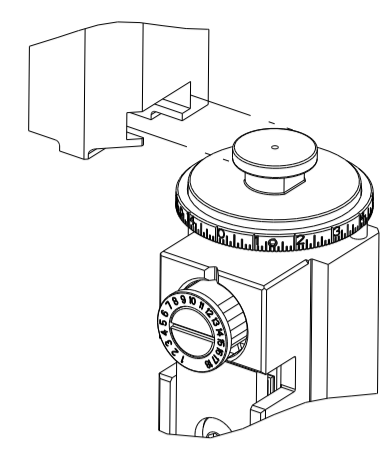


PART NUMBER	REVISION	DESCRIPTION	FEED TYPE
2150851-1	D	FINE CRIMP HEIGHT ADJUST	MECHANICAL
2150851-2	D	FINE CRIMP HEIGHT ADJUST	PNEUMATIC
7-2150851-1	D	MECHANICAL AND CRIMP TOOLING KIT	MECHANICAL
7-2150851-2	D	PNEUMATIC AND CRIMP TOOLING KIT	PNEUMATIC
7-2150851-7	A	CRIMP TOOLING KIT	-

ATLANTIC VERSION TERMINATOR INTERFACE ADAPTER



APPLICATOR DATA		
CRIMP	SIZE	TYPE
WIRE	2.54 mm [.100]	F
INSUL	3.18 mm [.125]	F
APPL INSTRUCTIONS 408-35043		

TERMINAL DATA: STANDEX TERMINAL STANDEX CRIMP SPECIFICATION			
TERMINAL NAME: CONNECTOR CLIP			
WIRE STRIP LENGTH		INSULATION DIAMETER RANGE	
3.59-4.35 mm [.141-.171 IN]		Ø1.78-2.41 mm [.070-.095 IN]	
TERMINAL APPLICATION SPECIFICATION	PL3744 Rev A		
TERMINALS APPLIED			
TE TERMINAL	STANDEX TERMINAL	TE TERMINAL	STANDEX TERMINAL
286864-1	PL3744-1	286864-2	PL3744-2

WIRE SIZE	CRIMP HEIGHT mm [INCH]	CRIMP HEIGHT REFERENCE SETTING
18 AWG	1.85 +/- 0.05 [.073 +/- .002]	5.0
20 AWG	1.78 +/- 0.05 [.070 +/- .002]	6.0
22 AWG	1.65 +/- 0.05 [.065 +/- .002]	7.2

- 1 RECOMMENDED SPARE PARTS
- 2 REFER TO SUPPLIED INSTRUCTION SHEET FOR CLEANING, LUBRICATION AND STORAGE OF APPLICATOR.
- 3 APPLY PART NUMBER 2-23419-6 LOCTITE TO THREADS OF ITEM 242.
- 4 CRIMP HEIGHT REFERENCE SETTING WAS THE SETTING USED WHEN THE APPLICATOR WAS QUALIFIED AT THE FACTORY. ADJUSTMENT MAY BE NECESSARY WHEN RUNNING APPLICATOR IN THE FIELD.
- 5. UNLESS SPECIFIED OTHERWISE TORQUE VALUES SHALL BE USED PER DOCUMENT, 101-35000.

**\*WARNING**  
ON INSTALLATION, SET WIRE DISC TO CRIMP HEIGHT REFERENCE SETTING FOR LARGEST WIRE SIZE. CRIMP HEIGHT REFERENCE SETTINGS GREATER THAN THE VALUE SHOWN MAY CAUSE DAMAGE TO THE CRIMP TOOLING, REFER TO THE INSTRUCTION SHEET FOR PROPER SETUP AND ADJUSTMENTS.

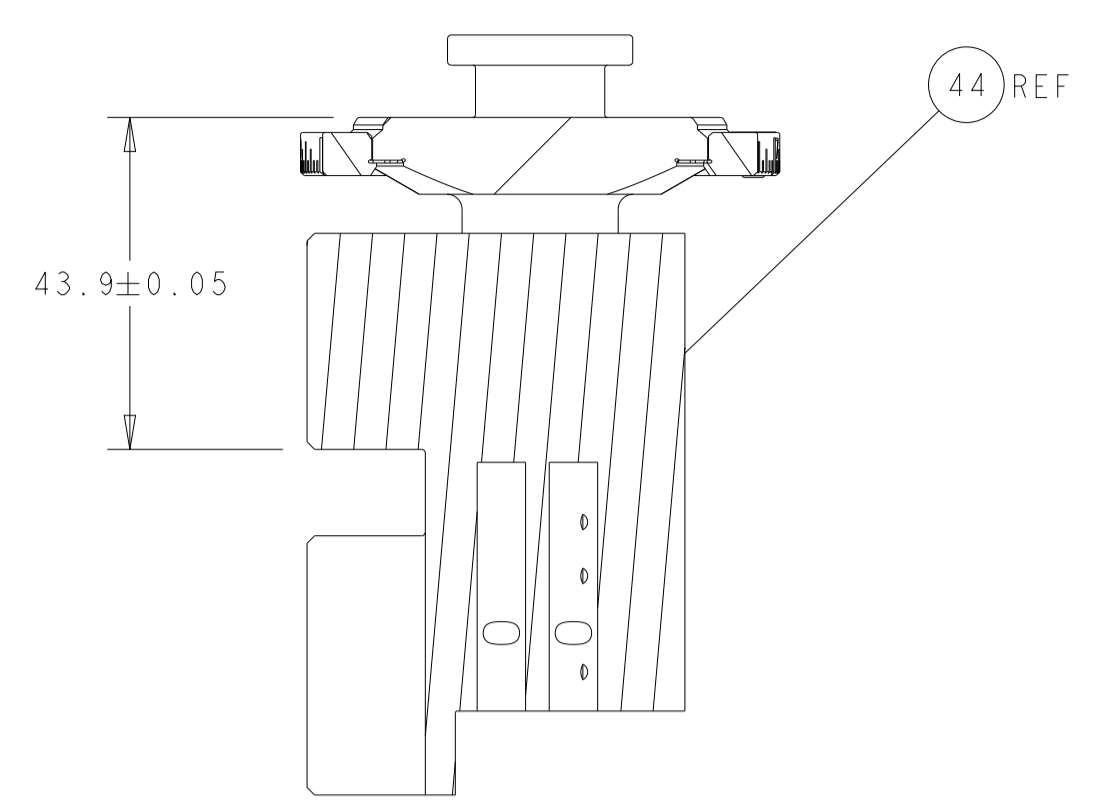
**ATLANTIC VERSION**  
Shown on sheets 1 of 4 & 2 of 4  
(Pacific version shown on sheets 3 of 4 & 4 of 4)

LOC	DIST	REVISIONS					
A	66	P	LTN	DESCRIPTION	DATE	DWN	APVD
		A		RELEASED	21NOV2017	MEH	CT
		B		ECR-19-016730	28OCT2019	FZ	TE
		C		ECR-22-148258	02AUG2022	TB	GB
		D		ECR-23-169796	20MAR2023	FZ	GB

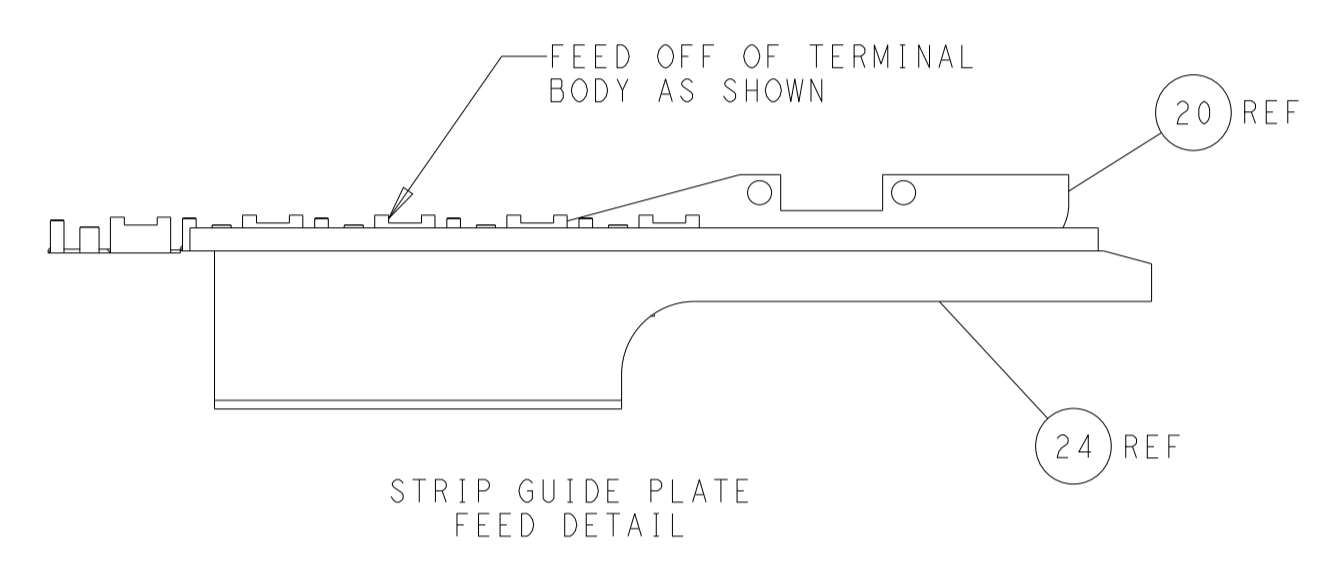
-	1	1	1	1	2119791-5	DEPRESSOR, WIRE	286					
-	1	-	1	-	2119641-1	FEED CAM, AIR FEED	248					
-	1	1	1	1	2119082-3	CAM, SNAIL, INSULATION ADJUSTMENT	244					
-	1	1	1	1	2079764-1	WASHER, WAVE SPRING, CREST-TO-CREST	243					
-	1	1	1	1	2119083-1	RETAINER, INSULATION DIAL	242					
-	-	1	-	1	2119580-1	MECHANICAL FEED ASSEMBLY	239					
-	1	-	1	-	2844940-3	AIR FEED MODULE	238					
-	2	2	2	2	1-2168083-1	SCR, SKT HD CAP, RoHS, M3 X 6	191					
-	REF	REF	REF	REF	994970-2	COUNTER, MAGNETIC	164					
-	1	1	1	1	455888-5	SPACER, CRIMPER	82					
-	1	1	1	1	2119791-5	DEPRESSOR, WIRE	73					
-	1	1	1	1	1803607-4	DOCUMENTATION PACKAGE	71					
-	2	2	2	2	2-18032-2	SCR, SET, FLT PNT, M3 X 10.0	70					
-	1	1	1	1	2119740-1	TAG, IDENTIFICATION	67					
-	2	2	2	2	2168078-1	SCREW, DRIVE, RH, RoHS, 2 x .188	66					
-	2	2	2	2	2168400-5	SHCS, LOW HEAD, RoHS, M4 X 20	64					
-	1	1	1	1	2168083-2	SCR, SKT HD CAP, RoHS, M4 X 8.0	60					
-	1	1	1	1	5-18022-5	SCR, HEX HD CAP, M4 X 6.0	59					
-	-	1	-	1	2063961-1	FEED FINGER	58					
-	3	3	3	3	2168400-4	SHCS, LOW HEAD, RoHS, M4 X 8	57					
-	2	2	2	2	2168083-2	SCR, SKT HD CAP, RoHS, M4 X 8.0	56					
-	2	2	2	2	5018030-1	NUT, HEX, REG, RoHS, M3	54					
-	2	2	2	2	986965-8	NUT, LOCK, HEX, TORQUE (M4)	53					
-	1	-	1	-	2063961-9	FEED FINGER	51					
-	1	2	1	2	18023-9	SCR, SKT HD CAP M4 X 6.0	49					
-	-	1	-	1	2119652-1	FEED CAM, PRE FEED	48					
-	-	1	-	1	2119653-1	FEED CAM, POST FEED	47					
-	1	1	1	1	2119655-5	APPLICATOR BASIC ASSEMBLY, EF	46					
-	1	1	1	1	1803517-1	RAM ASSEMBLY, EF ATLANTIC	44					
-	1	1	1	1	1803602-1	SCR, BHSC, RoHS (M8 X 25)	41					
-	7	7	7	7	1-18028-2	WASHER, FLAT, REG M4	33					
-	2	2	2	2	2168083-8	SCR, SKT HD CAP, RoHS, M4 X 16	31					
-	2	2	2	2	1-2168083-0	SCR, SKT HD CAP, RoHS, M4 X 10	29					
-	1	1	1	1	240639-1	STRIPPER (MACHINING)	27					
-	2	2	2	2	1-2168083-6	SCR, SKT HD CAP, RoHS, M4 X 35	25					
-	1	1	1	1	1752371-5	PLATE, STRIP GUIDE	24					
-	1	1	1	1	240825-4	PLATE, STRIP HOLD DOWN	23					
-	2	2	2	2	2-22281-3	SPRING, COMPRESSION	22					
-	1	1	1	1	1633168-1	ARM, STOCK DRAG	21					
-	1	1	1	1	1-464452-6	DRAG, STOCK	20					
-	2	2	2	2	1901259-6	GUIDE, LOWER STRIP	18					
-	4	4	4	4	1-2079383-1	SCR, BHSC, RoHS (M6 X 12)	17					
-	1	1	1	1	240644-9	PLATE, REAR SHEAR	11					
-	-	-	-	-	-	-	10					
-	1	1	1	1	690482-1	PLATE, FRONT SHEAR	9					
-	1	2	2	1	1803426-7	ANVIL, COMBINATION, END FEED	8					
-	1	1	1	1	2217206-1	BLADE, SLUG	7					
-	1	1	1	1	1803203-1	BLOCK, FRONT DEPRESSOR	6					
-	1	1	1	1	240641-1	SPACER	5					
-	1	1	1	1	4-238011-5	BLOCK, CRIMPER SPACER	4					
-	1	2	2	1	1-1803016-1	CRIMPER, INSULATION F	3					
-	1	1	1	1	455888-4	SPACER, CRIMPER	2					
-	1	2	2	1	5-568176-7	CRIMPER, WIRE	1					
-	77	-	72	-	71	-	2	-	1	PART NO	DESCRIPTION	ITEM NO

DIMENSIONS:		TOLERANCES UNLESS OTHERWISE SPECIFIED:		DWN K. HUANG 27OCT2017		CHK K. HUANG 27OCT2017		APVD L. ZHANG 27OCT2017		NAME Ocean End Feed Applicator	
mm	0 PLC ±	1 PLC ±	2 PLC ±	3 PLC ±	4 PLC ±	ANGLES ±	FINISH	SIZE	CAGE CODE	DRAWING NO	RESTRICTED TO
								A1	00779	2150851	
MATERIAL				WEIGHT		SCALE		SHEET		REV	
						1:1		1 OF 4		D	

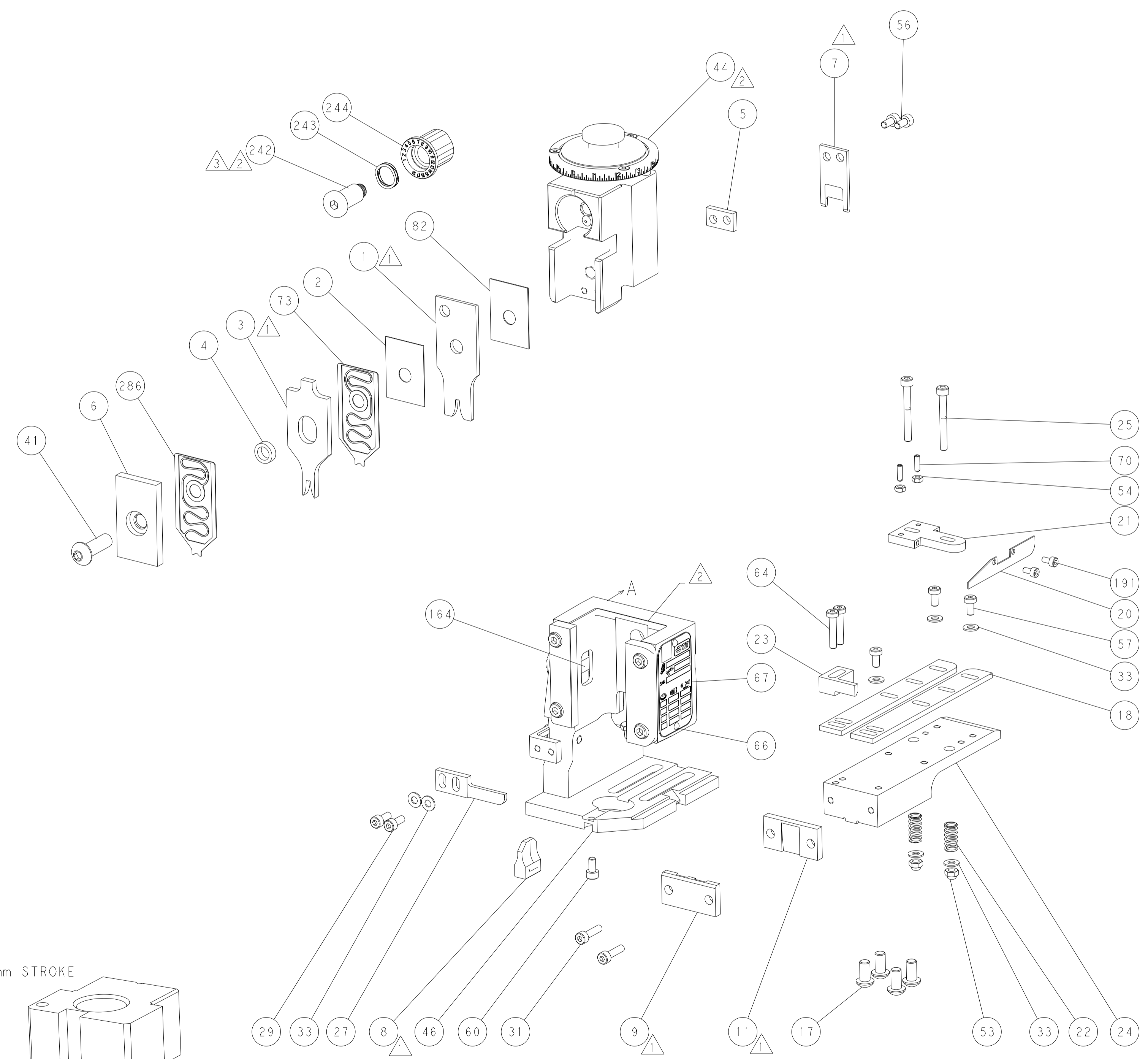
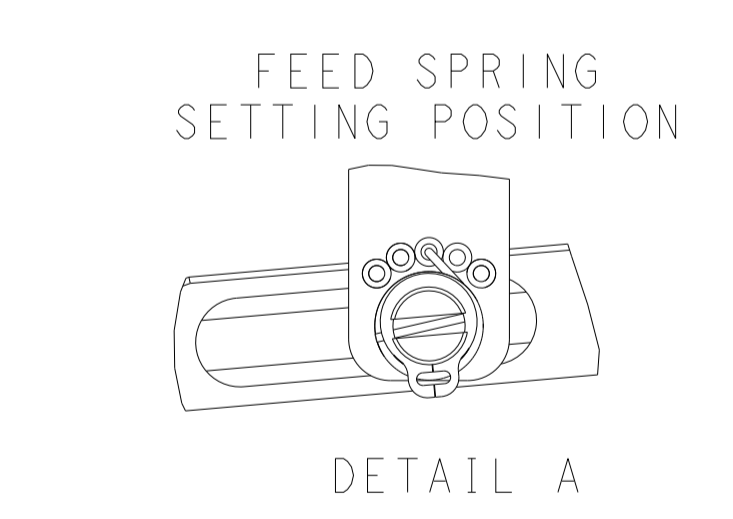
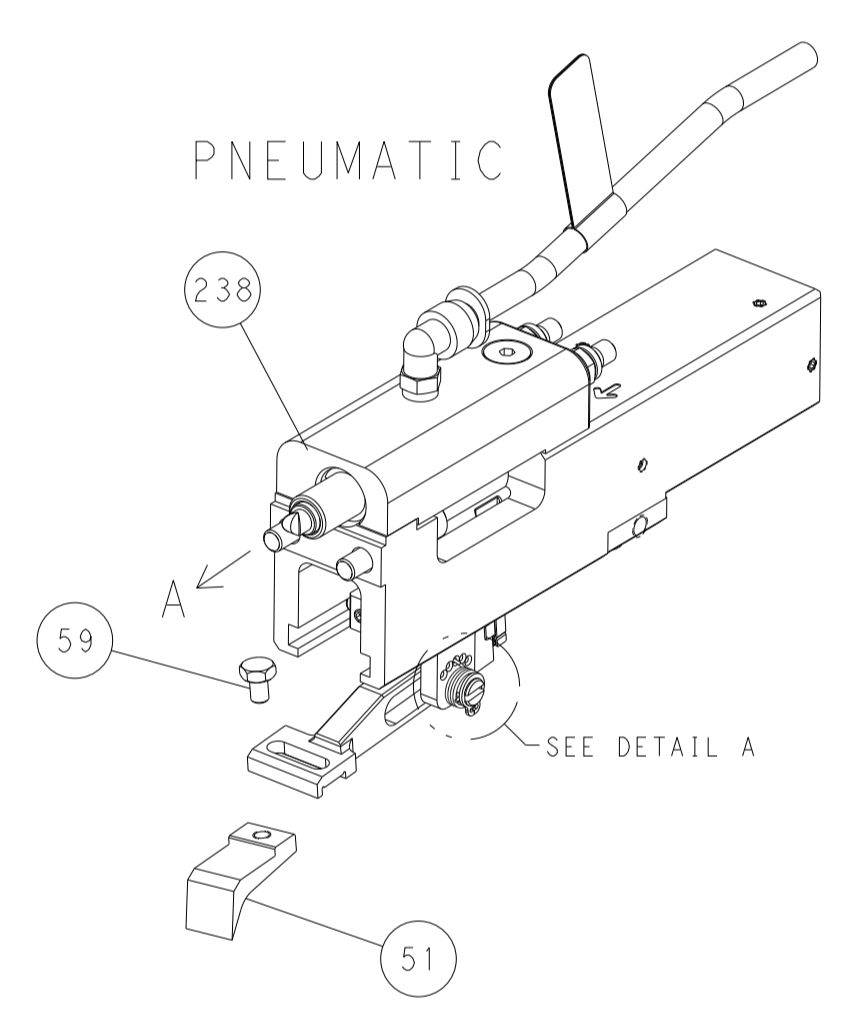
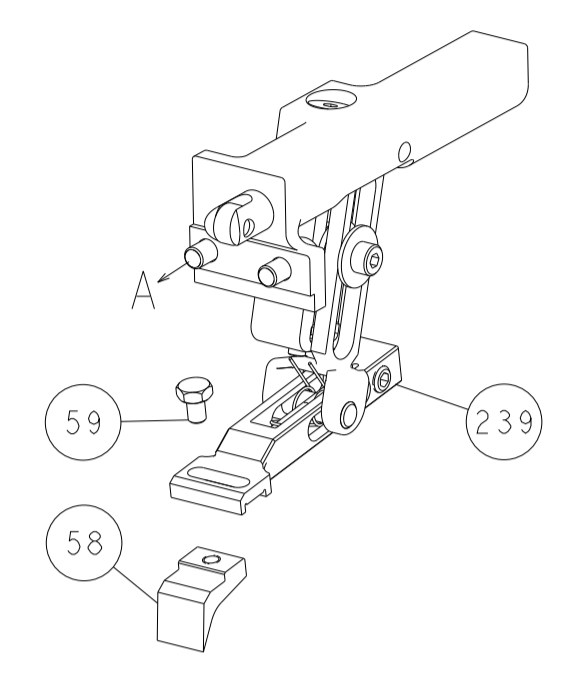
LOC	DIST	REV	DESCRIPTION	DATE	OWN	APVD
A	66		SEE SHEET 1			



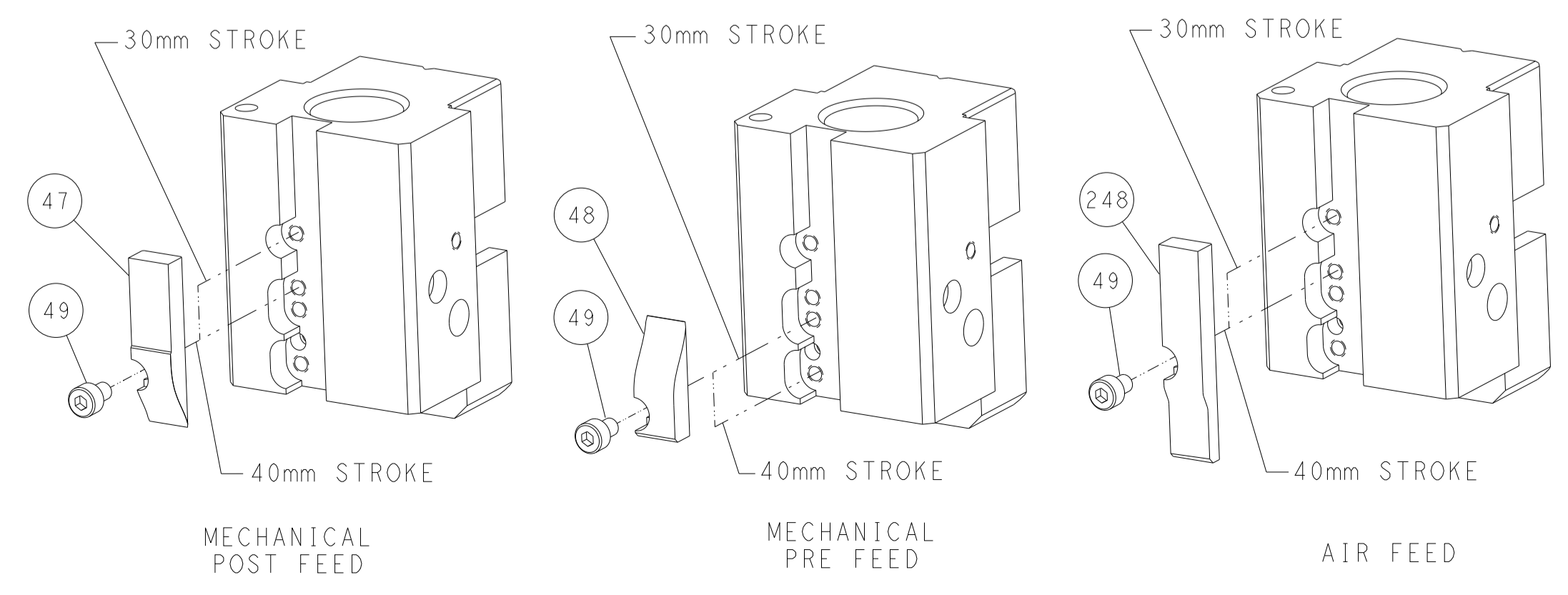
RAM SET-UP



FEED TYPE  
MECHANICAL



CAM POSITIONS

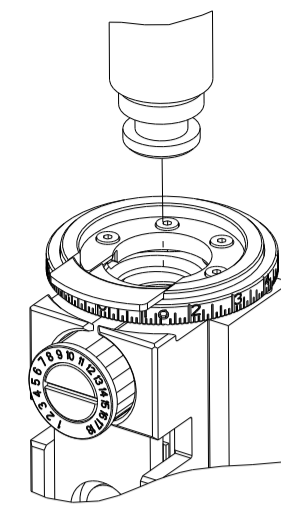


ATLANTIC VERSION  
 Shown on sheets 1 of 4 & 2 of 4  
 (Pacific version shown on sheets 3 of 4 & 4 of 4)

DIMENSIONS: mm 		TOLERANCES UNLESS OTHERWISE SPECIFIED: 0 PLC ± 1 PLC ± 2 PLC ± 3 PLC ± 4 PLC ± ANGLES ± FINISH		DWN K. HUANG 27OCT2017 CHK K. HUANG 27OCT2017 APVD L. ZHANG 27OCT2017		TE Connectivity Harrisburg, PA 17105-3608	
MATERIAL:		WEIGHT:		NAME: Ocean End Feed Applicator		RESTRICTED TO:	
Customer Accessible Production Drawing		SCALE: 1:1		SHEET 2 of 4		REV D	

THIS DRAWING IS UNPUBLISHED.	RELEASED FOR PUBLICATION	20	
COPYRIGHT 20 BY TYCO ELECTRONICS CORPORATION. ALL RIGHTS RESERVED.			
PART NUMBER	REVISION	DESCRIPTION	FEED TYPE
2-2150851-1	D	FINE CRIMP HEIGHT ADJUST	MECHANICAL
2-2150851-2	D	FINE CRIMP HEIGHT ADJUST	PNEUMATIC
7-2150851-7	A	CRIMP TOOLING KIT	-

PACIFIC VERSION TERMINATOR INTERFACE ADAPTER



APPLICATOR DATA		
CRIMP	SIZE	TYPE
WIRE	2.54 mm [.100]	F
INSUL	3.18 mm [.125]	F
APPL INSTRUCTIONS 408-35043		

TERMINAL DATA: STANDEX TERMINAL STANDEX CRIMP SPECIFICATION			
TERMINAL NAME: CONNECTOR CLIP			
WIRE STRIP LENGTH 3.59-4.35 mm [.141-.171 IN]		INSULATION DIAMETER RANGE Ø1.78-2.41 mm [.070-.095 IN]	
TERMINAL APPLICATION SPECIFICATION	PL3744 Rev A	-	-
TERMINALS APPLIED			
TE TERMINAL 286864-1	STANDEX TERMINAL PL3744-1	TE TERMINAL 286864-2	STANDEX TERMINAL PL3744-2

WIRE SIZE	CRIMP HEIGHT mm [INCH]	CRIMP HEIGHT REFERENCE SETTING
18 AWG	1.85 +/- 0.05 [.073 +/- .002]	5.0
20 AWG	1.78 +/- 0.05 [.070 +/- .002]	6.0
22 AWG	1.65 +/- 0.05 [.065 +/- .002]	7.2



- 1 RECOMMENDED SPARE PARTS
- 2 REFER TO SUPPLIED INSTRUCTION SHEET FOR CLEANING, LUBRICATION AND STORAGE OF APPLICATOR.
- 3 APPLY PART NUMBER 2-23419-6 LOCTITE TO THREADS OF ITEM 242.
- 4 CRIMP HEIGHT REFERENCE SETTING WAS THE SETTING USED WHEN THE APPLICATOR WAS QUALIFIED AT THE FACTORY. ADJUSTMENT MAY BE NECESSARY WHEN RUNNING APPLICATOR IN THE FIELD.
5. UNLESS SPECIFIED OTHERWISE TORQUE VALUES SHALL BE USED PER DOCUMENT, 101-35000.

**\*WARNING**  
ON INSTALLATION, SET WIRE DISC TO CRIMP HEIGHT REFERENCE SETTING FOR LARGEST WIRE SIZE. CRIMP HEIGHT REFERENCE SETTINGS GREATER THAN THE VALUE SHOWN MAY CAUSE DAMAGE TO THE CRIMP TOOLING, REFER TO THE INSTRUCTION SHEET FOR PROPER SETUP AND ADJUSTMENTS.

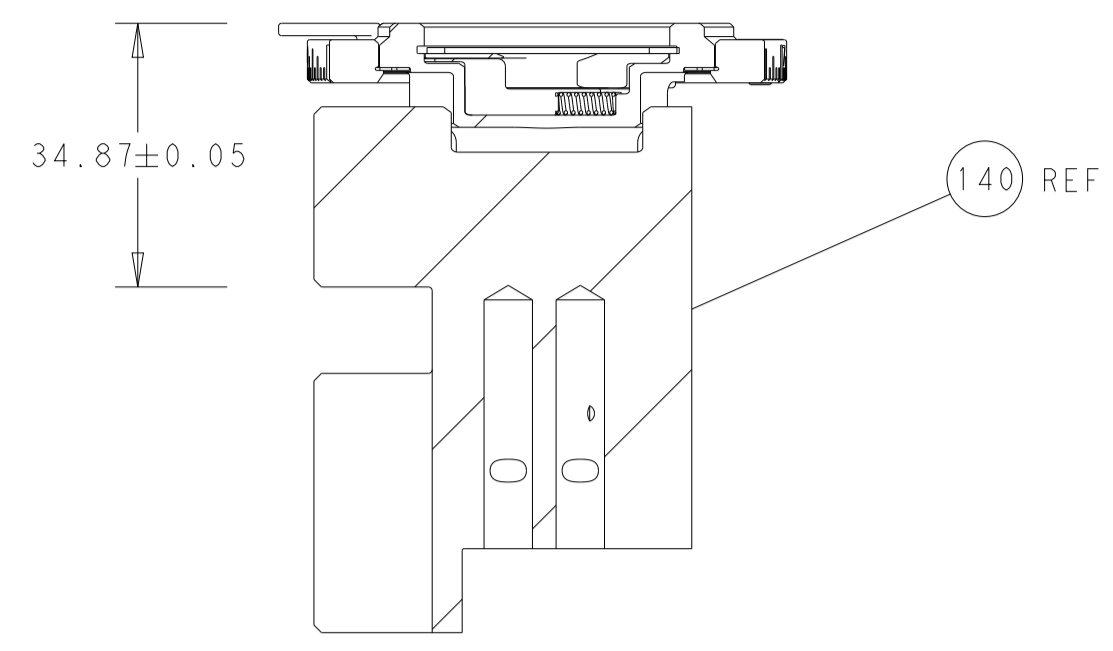
**PACIFIC VERSION**  
Shown on sheets 3 of 4 & 4 of 4  
(Atlantic version shown on sheets 1 of 4 & 2 of 4)

LOC	DIST	REVISIONS					
A	66	P	LTN	DESCRIPTION	DATE	OWN	APVD
-	-	-	-	SEE SHEET 1	-	-	-

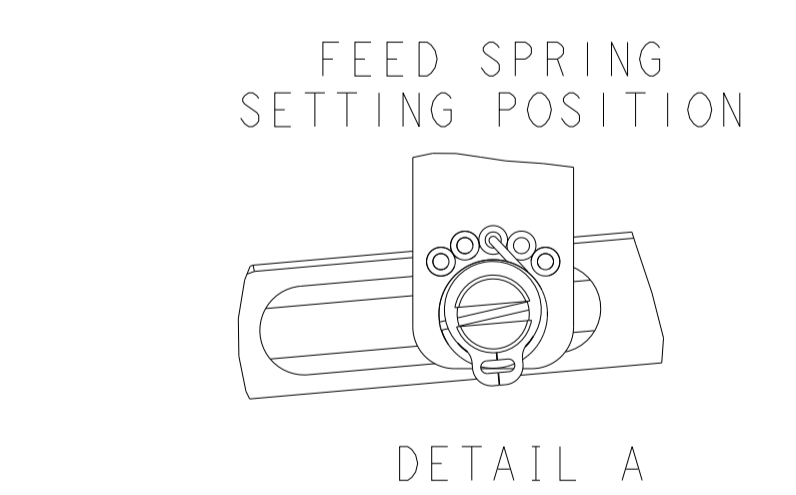
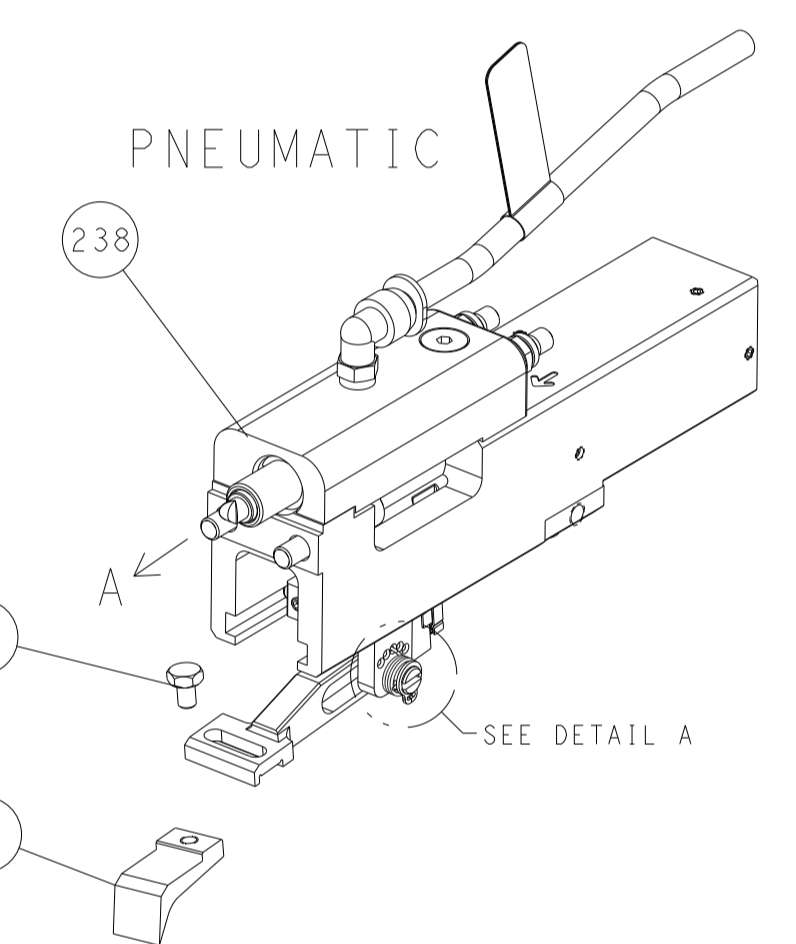
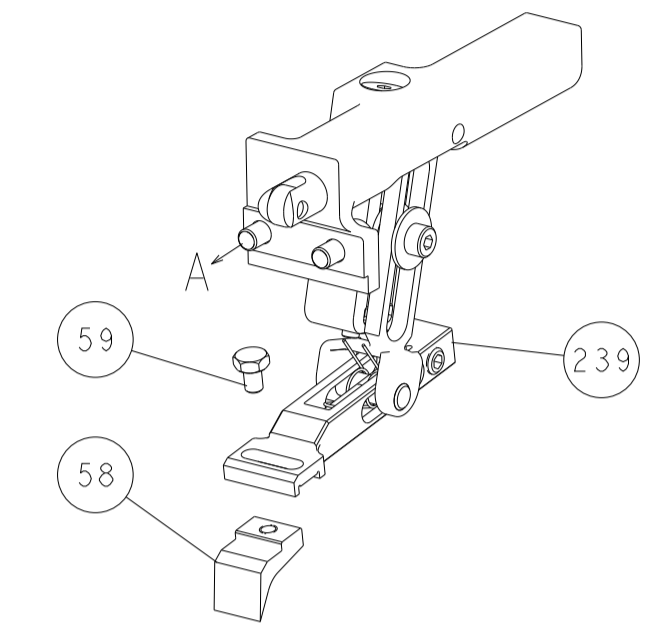
-	1	1	2119791-5	DEPRESSOR, WIRE	286
-	1	1	2119082-3	CAM, SNAIL, INSULATION ADJUSTMENT	244
-	1	1	2079764-1	WASHER, WAVE SPRING, CREST-TO-CREST	243
-	1	1	2119083-1	RETAINER, INSULATION DIAL	242
-	-	1	2119580-1	MECHANICAL FEED ASSEMBLY	239
-	1	-	2844940-3	AIR FEED MODULE	238
-	2	2	1-2168083-1	SCR, SKT HD CAP, RoHS, M3 X 6	191
-	4	4	2079383-9	SCR, BHSC, RoHS (M6 X 20)	186
-	REF	REF	994970-2	COUNTER, MAGNETIC	164
-	1	-	2119641-2	FEED CAM, AIR FEED	152
-	1	1	2168083-8	SCR, SKT HD CAP, RoHS, M4 X 16	144
-	-	1	2119653-2	FEED CAM, POST FEED	142
-	1	1	2119655-6	APPLICATOR BASIC ASSEMBLY, EF	141
-	1	1	1803518-1	RAM ASSEMBLY, EF PACIFIC	140
-	1	1	455888-5	SPACER, CRIMPER	82
-	1	1	2119791-5	DEPRESSOR, WIRE	73
-	1	1	1803607-4	DOCUMENTATION PACKAGE	71
-	2	2	2-18032-2	SCR, SET, FLT PNT, M3 X 10.0	70
-	1	1	2119740-1	TAG, IDENTIFICATION	67
-	2	2	2168078-1	SCREW, DRIVE, RH, RoHS, 2 x .188	66
-	2	2	2168400-5	SHCS, LOW HEAD, RoHS, M4 X 20	64
-	1	1	5-18022-5	SCR, HEX HD CAP, M4 X 6.0	59
-	-	1	2063961-1	FEED FINGER	58
-	3	3	2168400-4	SHCS, LOW HEAD, RoHS, M4 X 8	57
-	2	2	2168083-2	SCR, SKT HD CAP, RoHS, M4 X 8.0	56
-	2	2	5018030-1	NUT, HEX, REG, RoHS, M3	54
-	2	2	986965-8	NUT, LOCK, HEX, TORQUE (M4)	53
-	1	-	2063961-9	FEED FINGER	51
-	1	2	18023-9	SCR, SKT HD CAP M4 X 6.0	49
-	-	1	2119652-1	FEED CAM, PRE FEED	48
-	1	1	1803602-1	SCR, BHSC, RoHS (M8 X 25)	41
-	7	7	1-18028-2	WASHER, FLAT, REG M4	33
-	2	2	2168083-8	SCR, SKT HD CAP, RoHS, M4 X 16	31
-	2	2	1-2168083-0	SCR, SKT HD CAP, RoHS, M4 X 10	29
-	1	1	240639-1	STRIPPER (MACHINING)	27
-	2	2	1-2168083-6	SCR, SKT HD CAP, RoHS, M4 X 35	25
-	1	1	1752371-5	PLATE, STRIP GUIDE	24
-	1	1	240825-4	PLATE, STRIP HOLD DOWN	23
-	2	2	2-22281-3	SPRING, COMPRESSION	22
-	1	1	1633168-1	ARM, STOCK DRAG	21
-	1	1	1-464452-6	DRAG, STOCK	20
-	2	2	1901259-6	GUIDE, LOWER STRIP	18
-	1	1	240644-9	PLATE, REAR SHEAR	11
-	-	-	-	-	10
-	1	1	690482-1	PLATE, FRONT SHEAR	9
-	1	1	1803426-7	ANVIL, COMBINATION, END FEED	8
-	1	1	2217206-1	BLADE, SLUG	7
-	1	1	1803203-1	BLOCK, FRONT DEPRESSOR	6
-	1	1	240641-1	SPACER	5
-	1	1	4-238011-5	BLOCK, CRIMPER SPACER	4
-	1	1	1-1803016-1	CRIMPER, INSULATION F	3
-	1	1	455888-4	SPACER, CRIMPER	2
-	1	1	5-568176-7	CRIMPER, WIRE	1
-	77	22	21	PART NO	ITEM NO

DIMENSIONS: mm		TOLERANCES UNLESS OTHERWISE SPECIFIED:		DWG: K. HUANG 27OCT2017		CHK: K. HUANG 27OCT2017		APVD: L. ZHANG 27OCT2017		NAME: L. ZHANG		PRODUCT SPEC: -		APPLICATION SPEC: -		SIZE: A1		CAGE CODE: 00779		DRAWING NO: C=2150851		RESTRICTED TO: -	
MATERIAL: -		FINISH: -		WEIGHT: -		SCALE: 1:1		SHEET: 3		OF: 4		REV: D		Customer Accessible Production Drawing		SCALE: 1:1		SHEET: 3		OF: 4		REV: D	

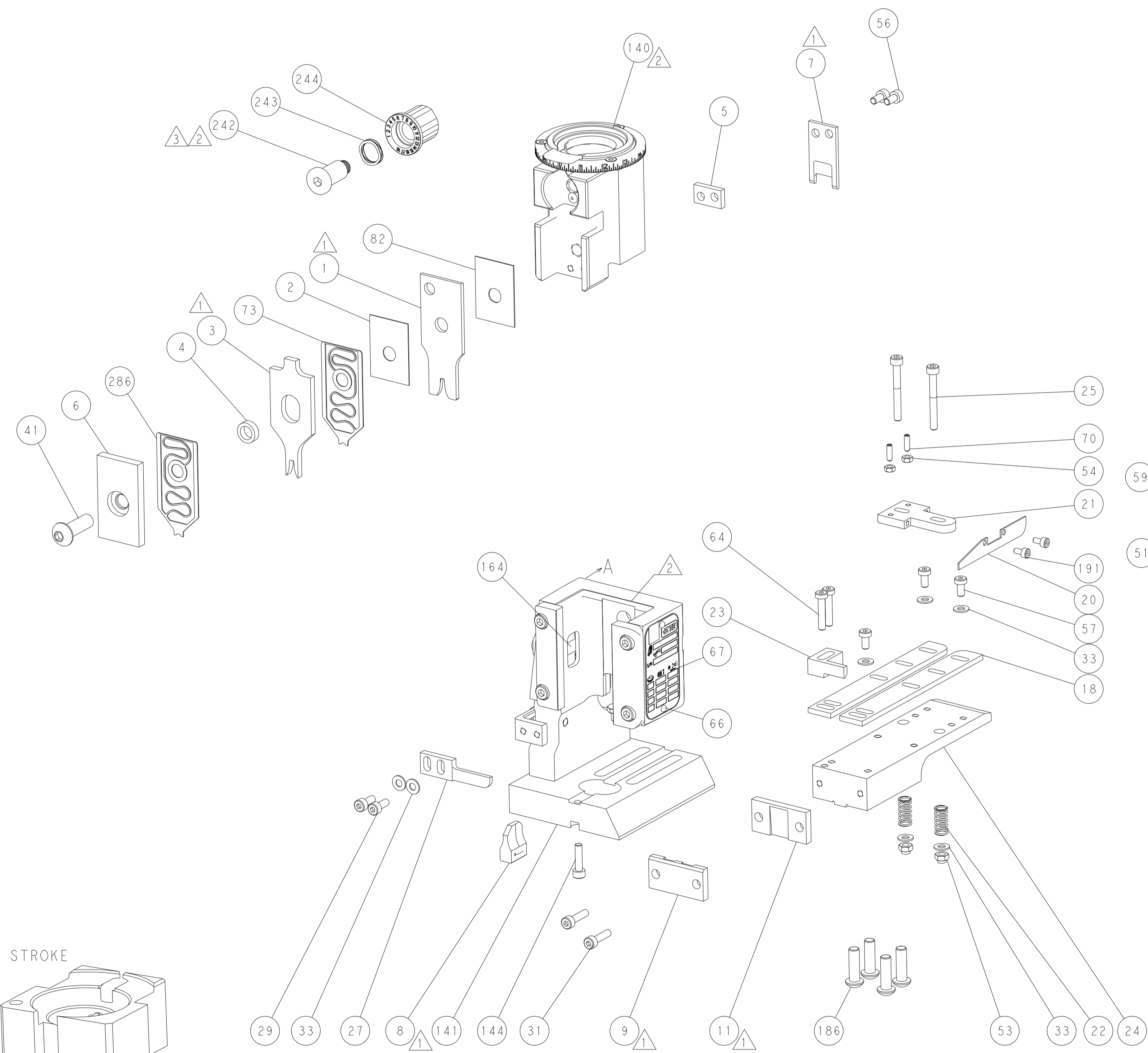
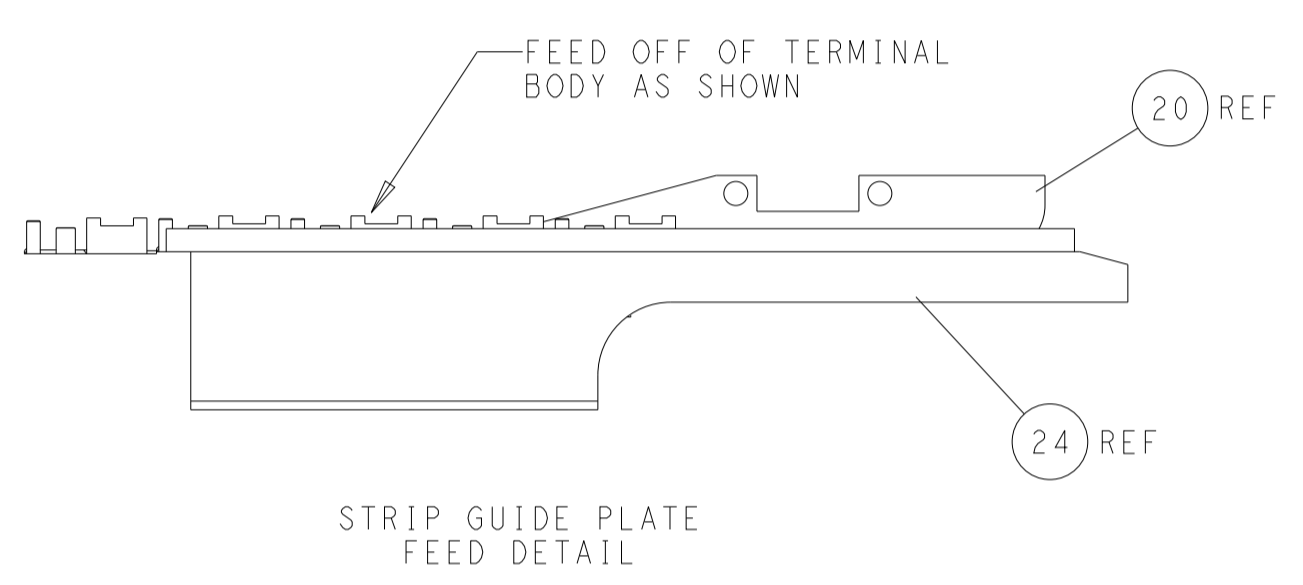
LOC	DIST	REVISIONS			
P	LTN	DESCRIPTION	DATE	OWN	APVD
A	66	SEE SHEET 1			



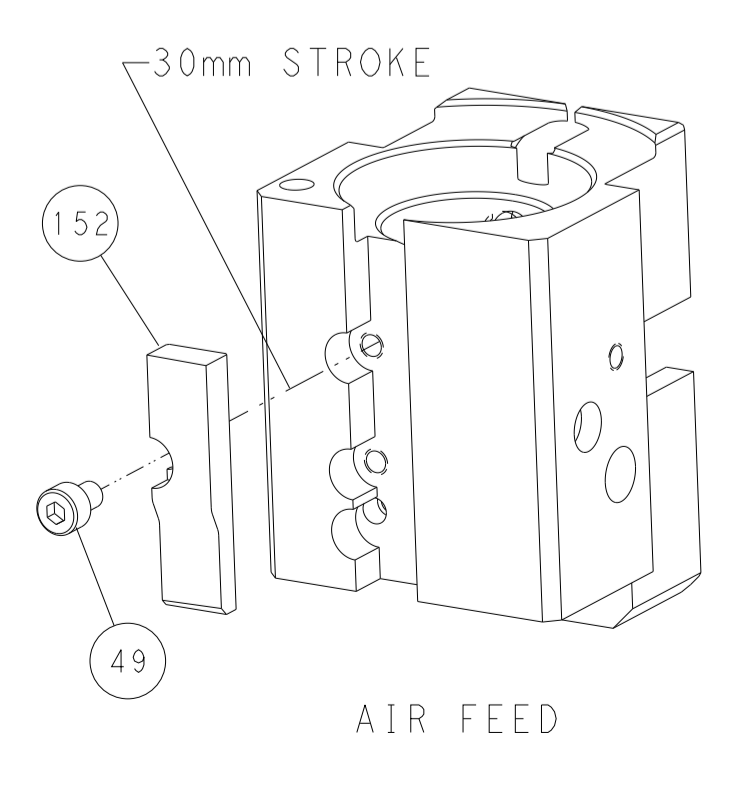
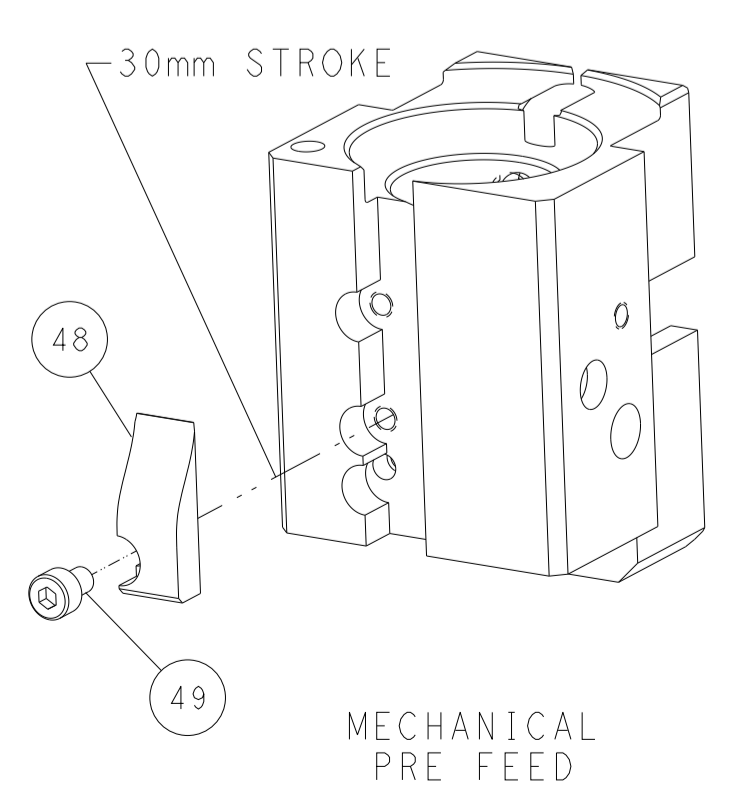
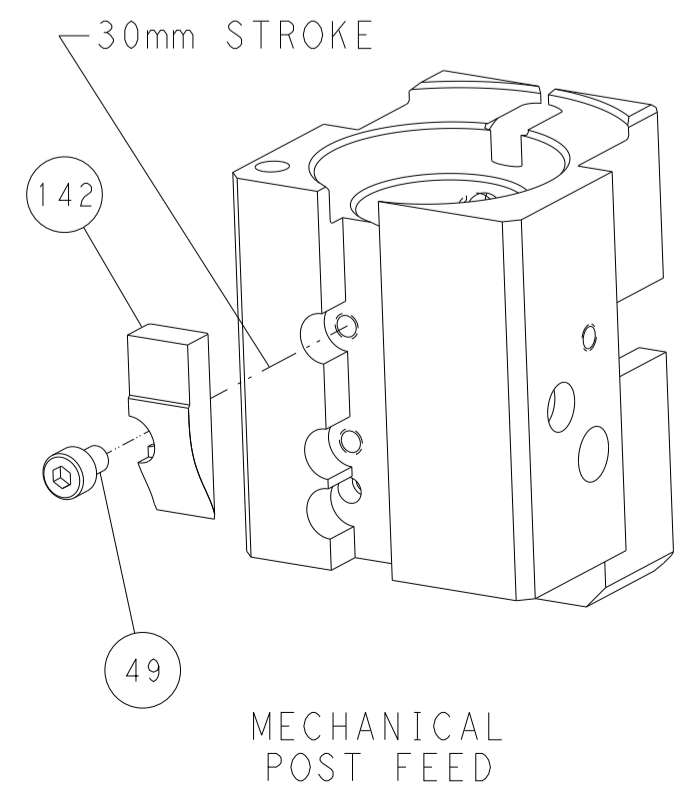
# FEED TYPE MECHANICAL



## RAM SET-UP



## CAM POSITIONS



**PACIFIC VERSION**  
 Shown on sheets 3 of 4 & 4 of 4  
 (Atlantic version shown on sheets 1 of 4 & 2 of 4)

<small>THIS DRAWING IS UNPUBLISHED. RELEASED FOR PUBLICATION BY TYCO ELECTRONICS CORPORATION. ALL RIGHTS RESERVED.</small>		DWN: K. HUANG 27OCT2017 CHK: K. HUANG 27OCT2017 APVD: L. ZHANG 27OCT2017	TE Connectivity Harrisburg, PA 17105-3608
DIMENSIONS: mm TOLERANCES UNLESS OTHERWISE SPECIFIED: 0 PLC ± 1 PLC ± 2 PLC ± 3 PLC ± 4 PLC ± ANGLES FINISH ±		NAME: Ocean End Feed Applier SIZE: A1 CAGE CODE: 00779 DRAWING NO: C-2150851 SCALE: 1:1 SHEET: 4 of 4 REV: D	RESTRICTED TO:
MATERIAL:		Customer Accessible Production Drawing	