

ATLANTIC VERSION TERMINATOR INTERFACE ADAPTER. PART NUMBER, REVISION, DESCRIPTION, FEED TYPE, CONVERT TO, PART NUMBERS REQUIRED. Includes drawing of the device and a list of components like PNEUMATIC FEED, SERVO LATCH PLATE, SMART APPLICATOR, MECHANICAL FEED, SERVO LATCH PLATE, MECHANICAL FEED, SMART APPLICATOR, PNEUMATIC FEED, SERVO LATCH PLATE, SERVO LATCH PLATE, NONE, CRIMP TOOLING KIT.

APPLICATOR DATA. CRIMP SIZE TYPE, WIRE SIZE, INSUL. Includes instructions and a diagram of a terminal.

TERMINAL DATA: LAT TERMINAL, TE CRIMP SPECIFICATION. Includes wire strip length, insulation diameter range, terminal application, and terminals applied.

WIRE SIZE, CRIMP HEIGHT, CRIMP HEIGHT REFERENCE SETTING. Table with 3 columns: wire size, crimp height (mm and inch), and crimp height reference setting.

- RECOMMENDED SPARE PARTS
GREASE BEARING SURFACES LIGHTLY
3. LUBRICATE DAILY PER THE APPLICATOR INSTRUCTION SHEET SUPPLIED WITH THE APPLICATOR.
4. APPLICATOR SPECIFIC DATA TO BE ENTERED INTO BLANK MEMORY CHIP AT ASSEMBLY.
5. ADJUSTMENT OF THE STRIPPER MAY BE REQUIRED WHEN MOVING THE APPLICATOR BETWEEN BENCH AND LEADMAKER APPLICATIONS.
6. APPLY PART NUMBER 1-23419-5 LOCTITE TO THREADS OF ITEM 62.
7. GREASE THREADS, GROOVE AND O-RING ON ITEMS 35 & 252.
8. MAGNET, ITEM 166 MUST BE ORIENTED CORRECTLY IN ORDER TO PROPERLY ACTUATE THE COUNTER.
9. CRIMP HEIGHT REFERENCE SETTING WAS THE SETTING USED WHEN THE APPLICATOR WAS QUALIFIED AT THE FACTORY.
10. SPARE FEED CAM STORAGE LOCATION REFER TO INSTRUCTION SHEET FOR ADDITIONAL INFORMATION.
11. THE RECOMMENDED SET-UP FOR END FEED APPLICATORS IS POST-FEED WITH ITEM 2119653-1.
12. WHEN ASSEMBLING -6 NON-CRIMP HEIGHT ADJUST APPLICATOR USE SHIM PACK 2119957-2 TO ALIGN APPLICATOR'S MAXIMUM WIRE CRIMP HEIGHT AT NORMAL TERMINATOR SHUT HEIGHT.
13. TERMINAL LUBRICANT IS RECOMMENDED.

*WARNING ON INSTALLATION, SET WIRE DISC, ITEM 40 TO LARGEST WIRE SIZE SETTING. USE OF SETTINGS BELOW MINIMUM REQUIRED CRIMP HEIGHT SETTING WILL CAUSE DAMAGE TO CRIMP TOOLING.

Table with columns: PART NO, DESCRIPTION, ITEM NO. Lists items like APPLICATOR SHIM PACK, O-RING, PUSH ROD, BUSHING, FEED CAM, DETENT PIN.

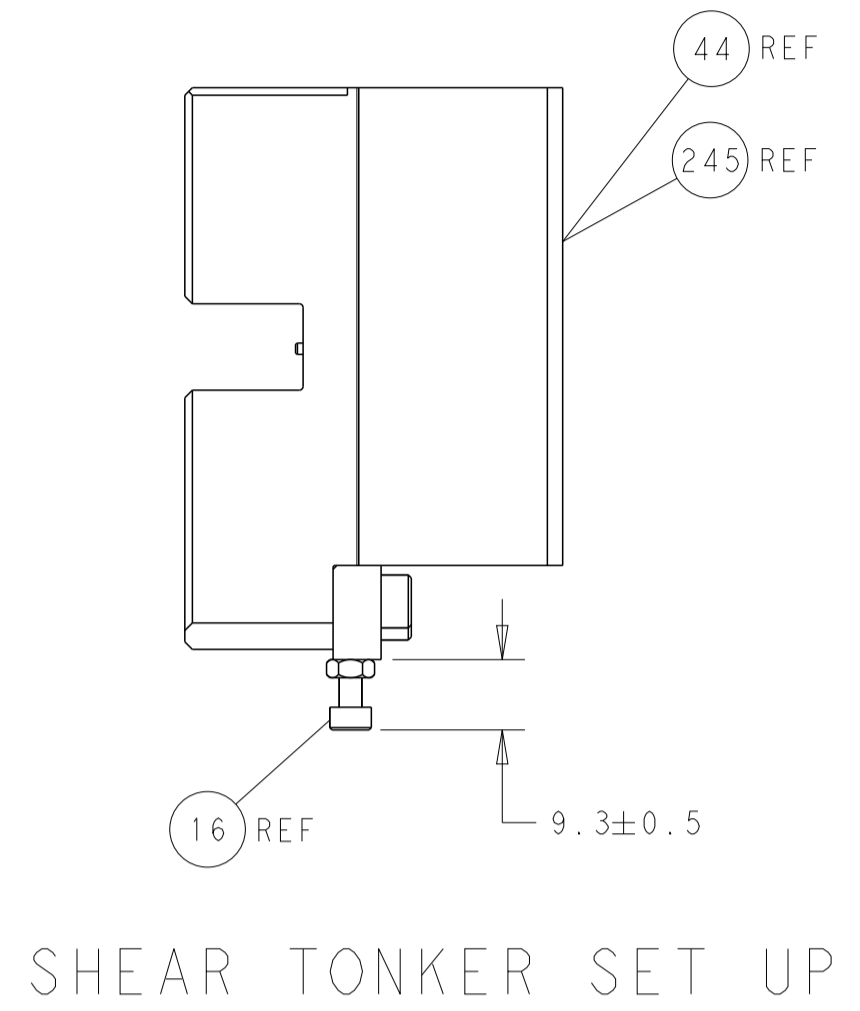
ATLANTIC VERSION Shown on sheets 1 of 4 & 2 of 4 (Pacific version shown on sheets 3 of 4 & 4 of 4)

SET UP GAUGE, REVISIONS. Includes drawing number 2119599-2, location A, and revision table with columns: P, LTM, DESCRIPTION, DATE, DWN, APVD.

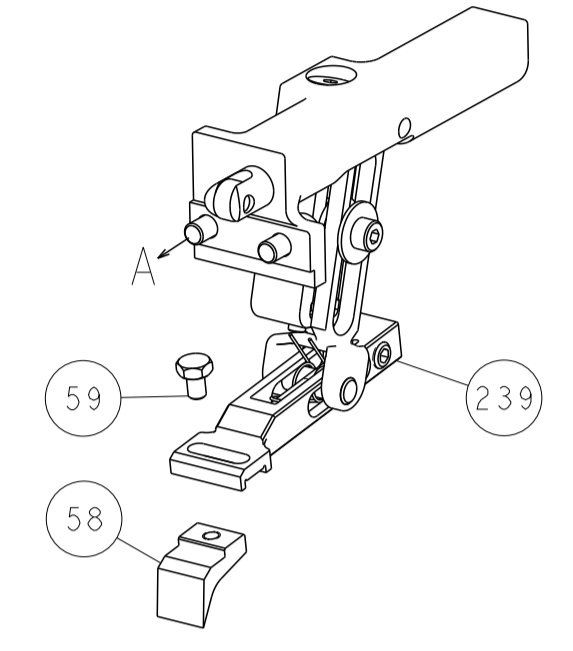
Main assembly list table with columns: QTY, PART NO, DESCRIPTION, DATE, DWN, APVD. Lists various components like SPRING, RAM, SHCS, MECHANICAL FEED ASSEMBLY, TAG, FLOATING SHEAR HOLDER, SCR, FEED FINGER ASSEMBLY, RING, MAGNET, COUNTER, SPRING, PIN, MEMORY CHIP, SERVO FEED LATCH ASM, WASHER, ASSY, SPACER, BLOCK, DEPRESSOR, DOCUMENTATION PACKAGE, SCR, WASHER, TAG, SCREW, LIMITER, SCR, SCR, FEED FINGER, SHCS, SCR, NUT, PAWL, SCR, FEED CAM, FEED CAM, APPLICATOR BASIC ASSEMBLY, RAM, SCR, DISC, APPLICATOR SHIM PACK, RAM WASHER, FA HEAD, BOLT, WASHER, SCR, SCR, STRIPPER, PLATE, SPRING, ARM, DRAG, GUIDE, SCR, SCR, NUT, ANVIL, SHEAR BLADE, SPACER, TONKER, DRAG, GUIDE, SCR, NUT, CRIMPER.

Technical drawing header including dimensions, tolerances, material, weight, and drawing information. Includes drawing title: Ocean End Feed Applicator.

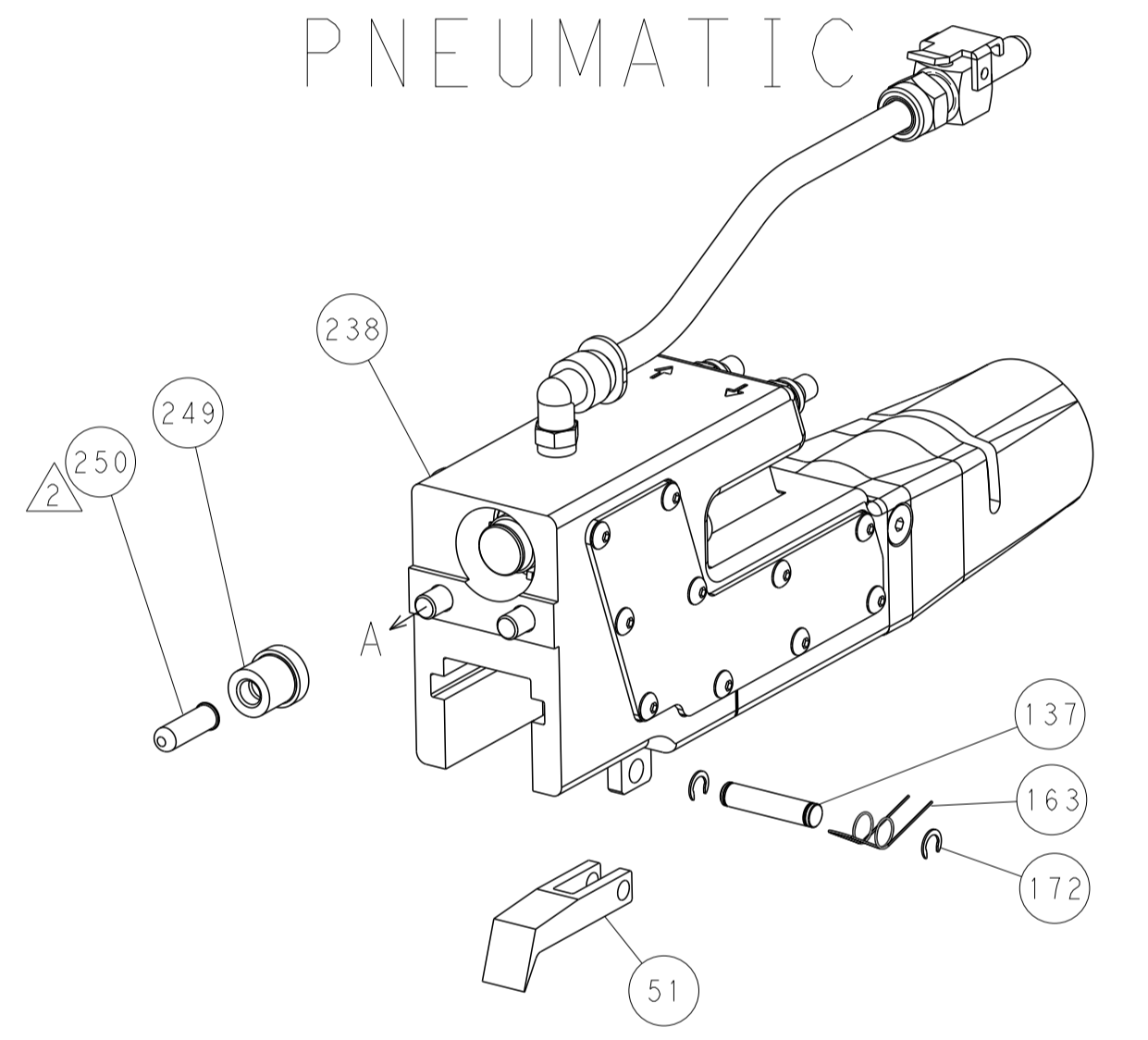
LOC	DIST	REV	DATE	BY	APPV
A	66				
REVISIONS			DESCRIPTION	DATE	OWN
-			SEE SHEET 1	-	-



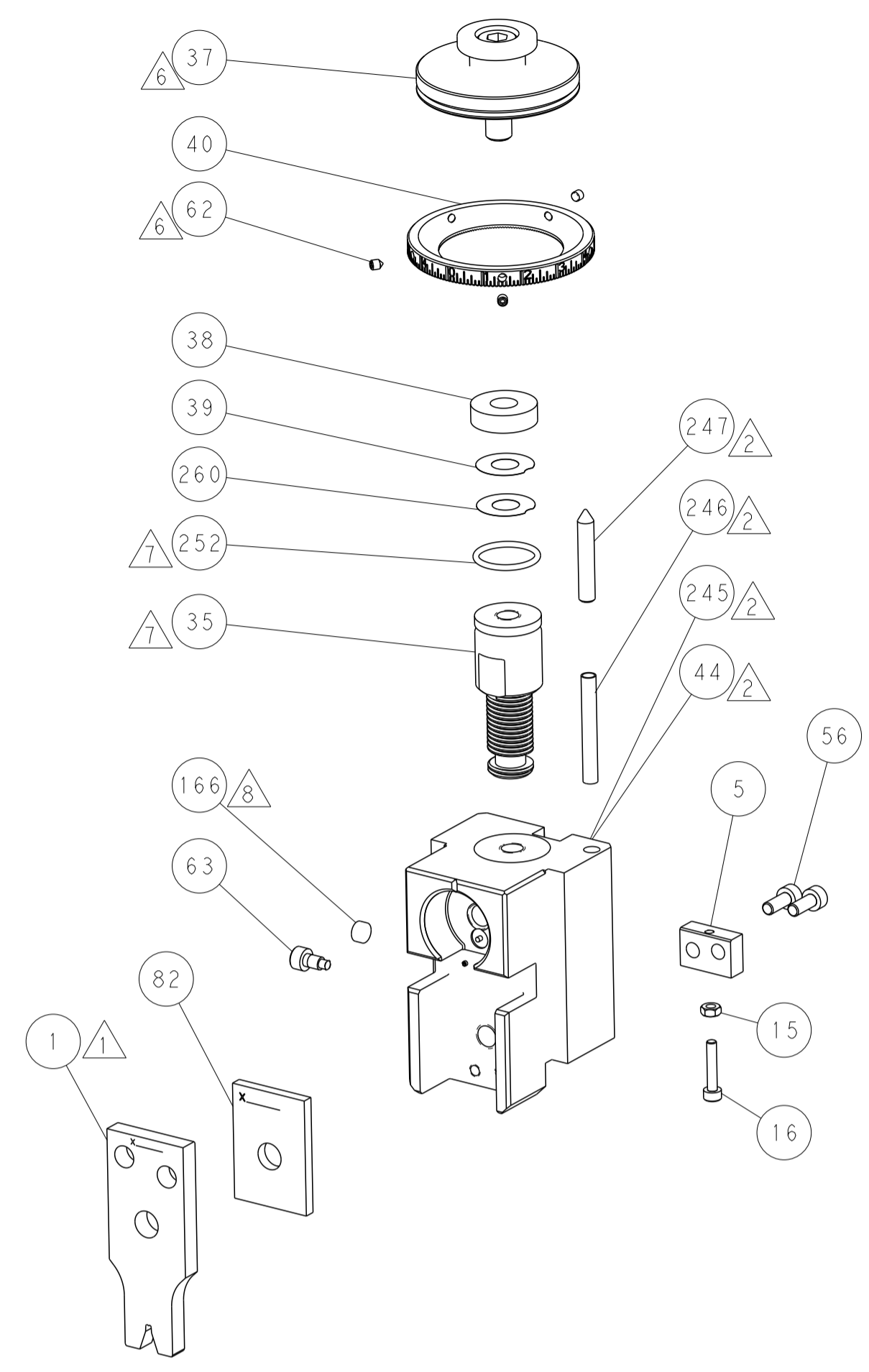
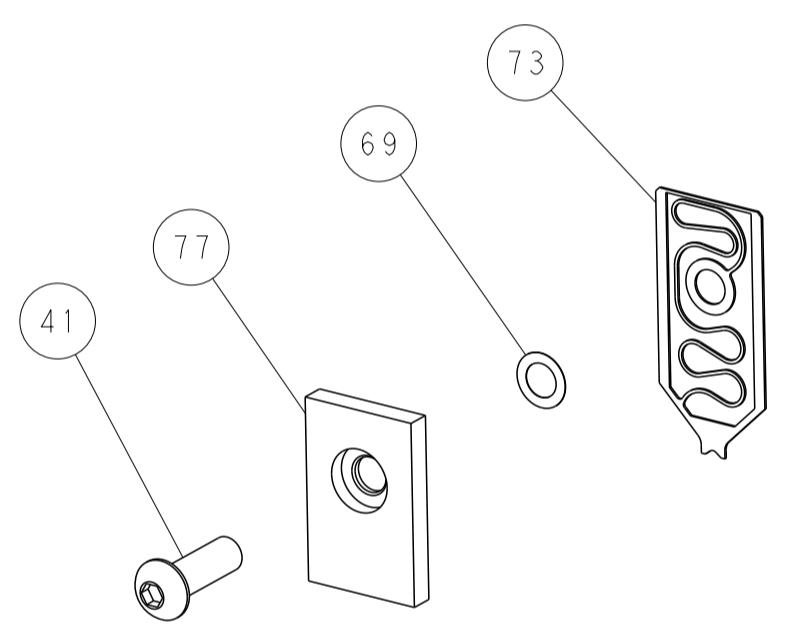
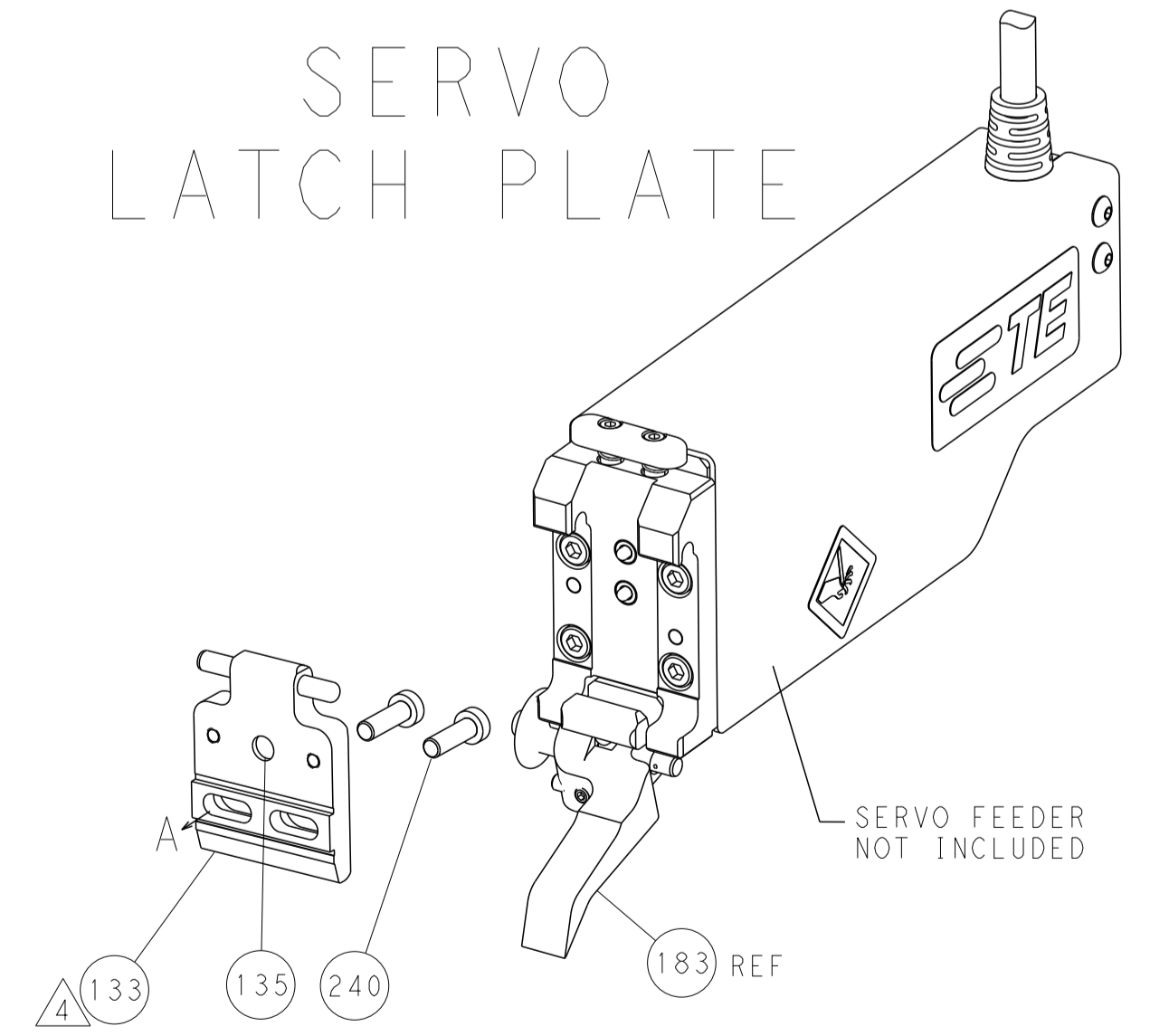
FEED TYPE
MECHANICAL



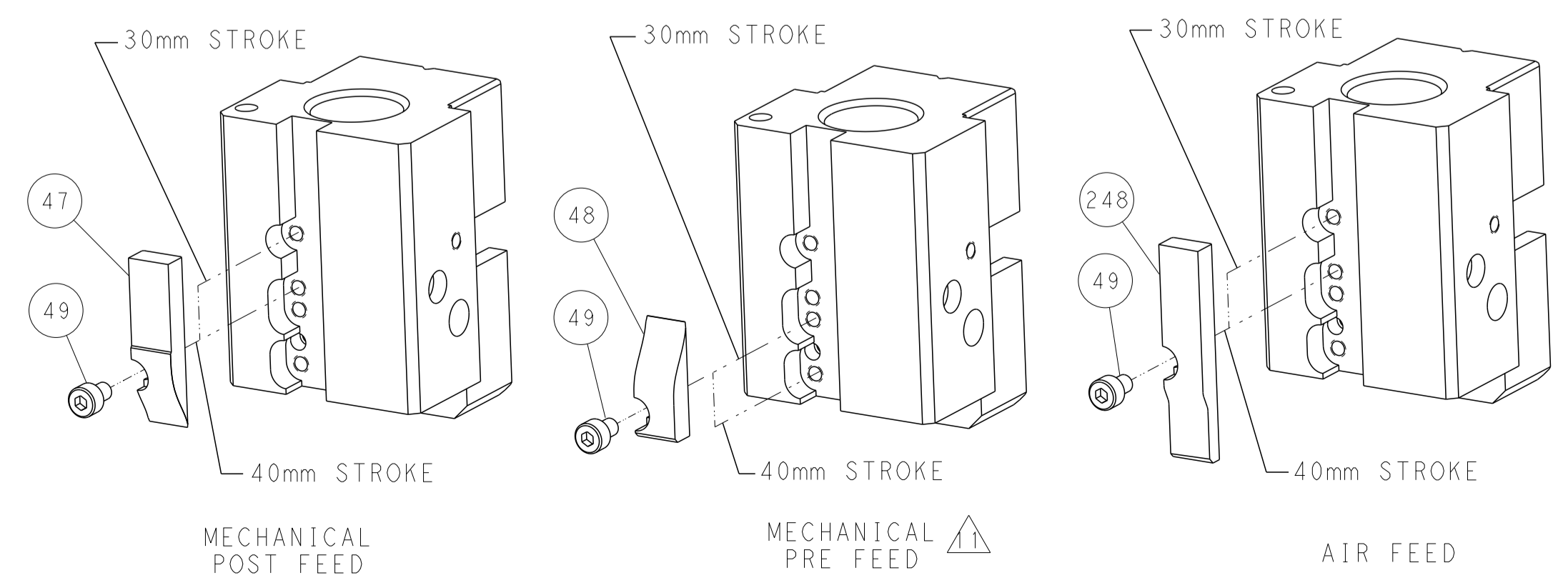
PNEUMATIC



SERVO
LATCH PLATE



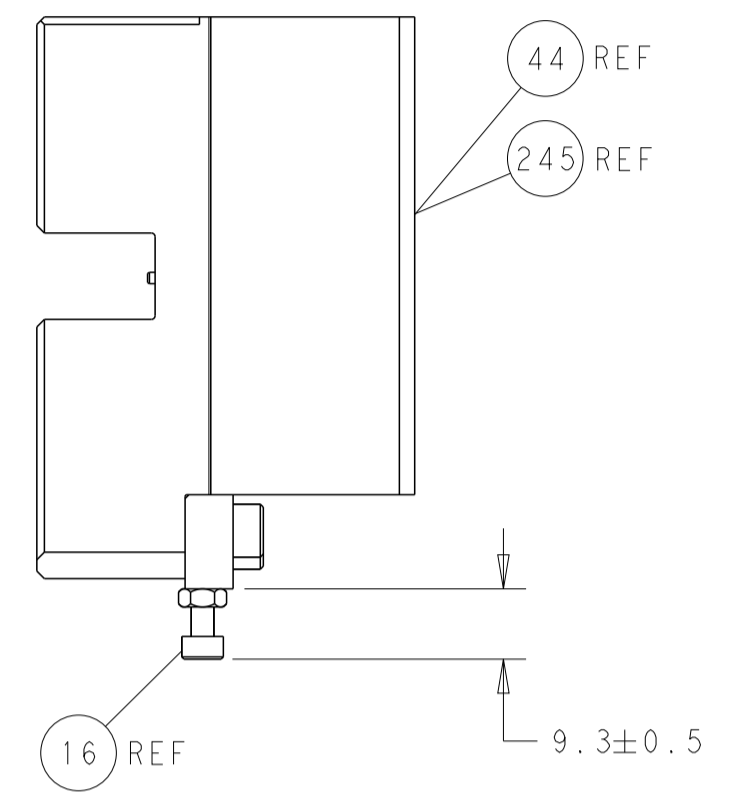
CAM POSITIONS



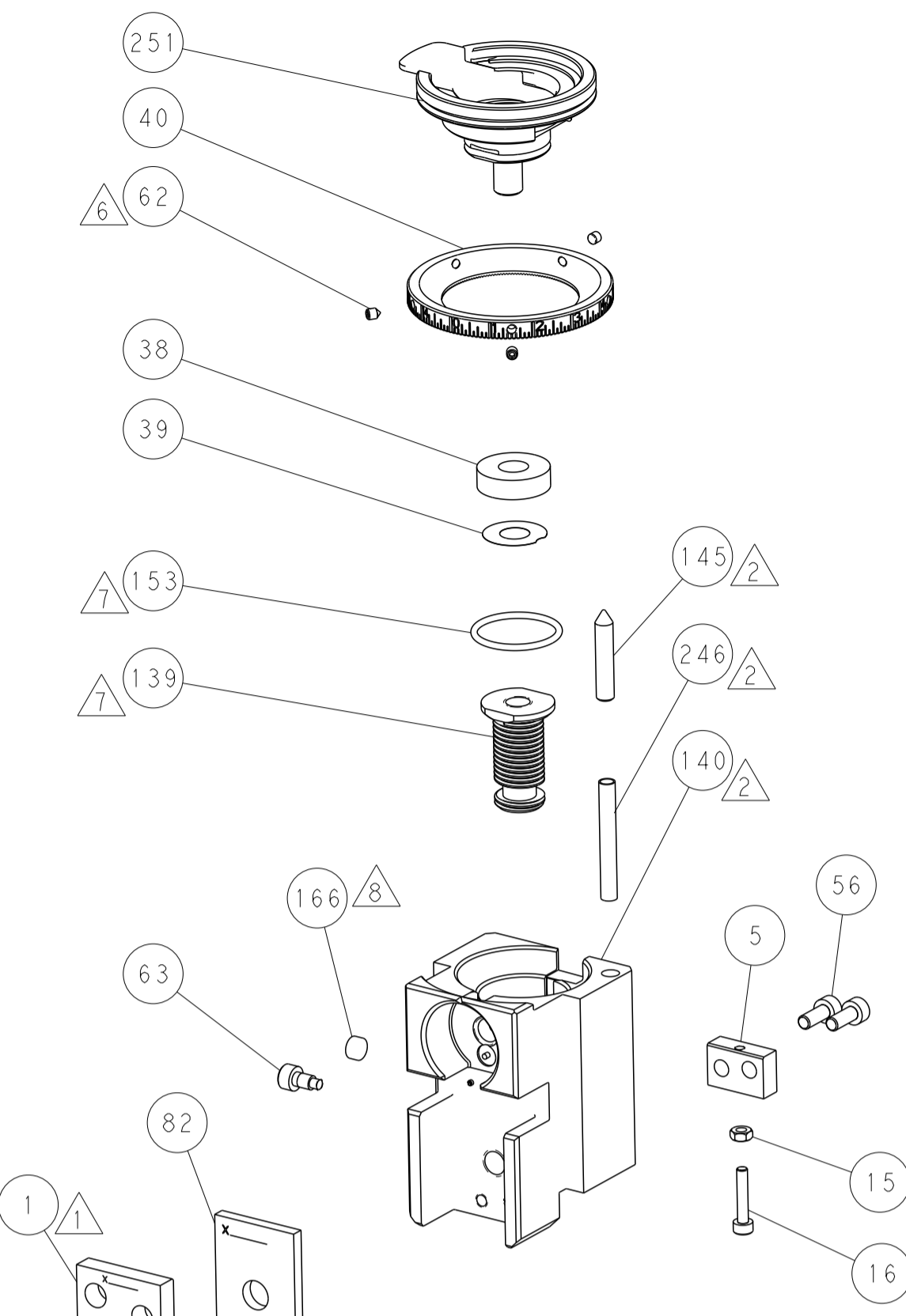
ATLANTIC VERSION
 Shown on sheets 1 of 4 & 2 of 4
 (Pacific version shown on sheets 3 of 4 & 4 of 4)

DIMENSIONS:		TOLERANCES UNLESS OTHERWISE SPECIFIED:		DWG: K. HUANG 02JUN2017		TE Connectivity	
mm	0 PLC ±	1 PLC ±	2 PLC ±	3 PLC ±	4 PLC ±	ANGLES ±	TE Connectivity Harrisburg, PA 17105-3608
MATERIAL:	FINISH:	WEIGHT:	SCALE:	NAME:	SIZE:	CAGE CODE:	DRAWING NO:
			1:1	Ocean End Feed Applicator	A1	00779	©=2150811
Customer Accessible Production Drawing				SHEET 2 OF 4 REV A			

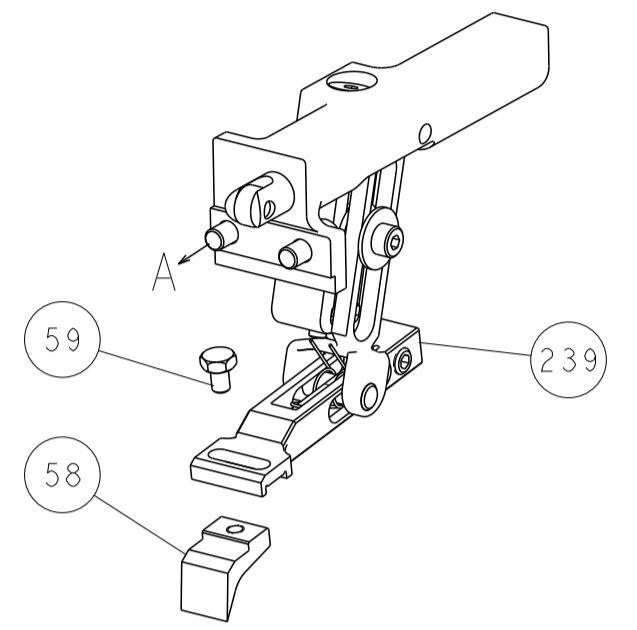
LOC		DIST		REVISIONS			
A	66	P	LTM	DESCRIPTION	DATE	DWN	APVD
-	-	-	-	SEE SHEET 1	-	-	-



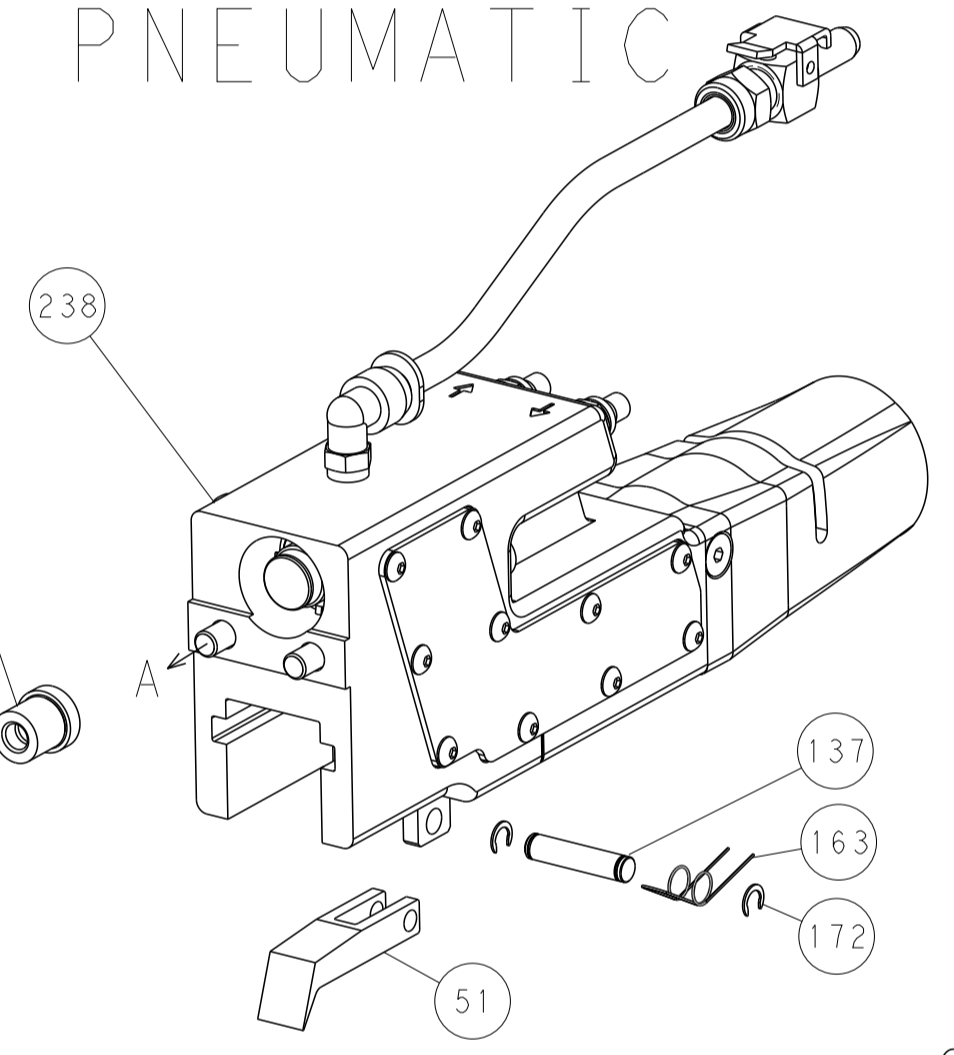
SHEAR TONKER SET UP



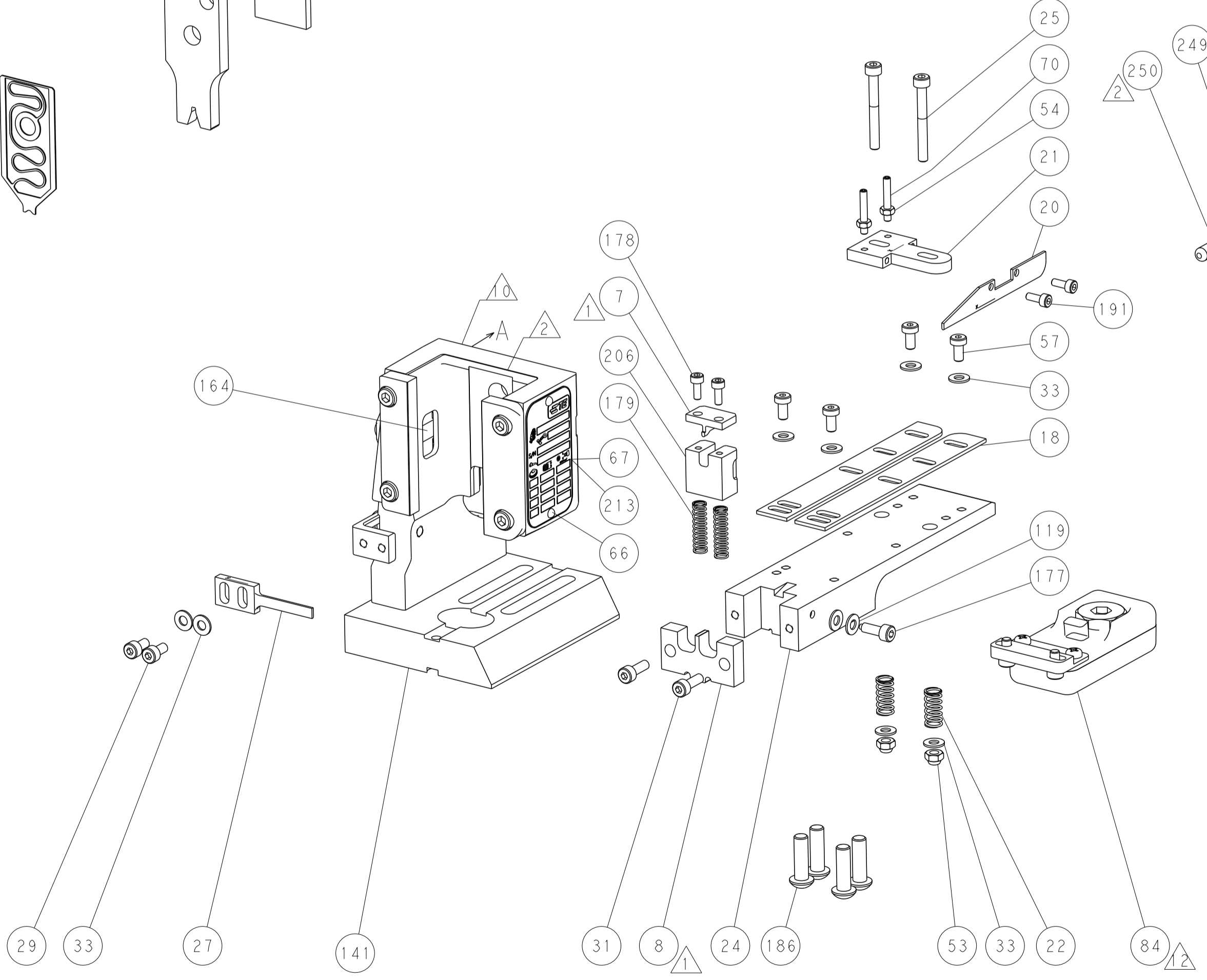
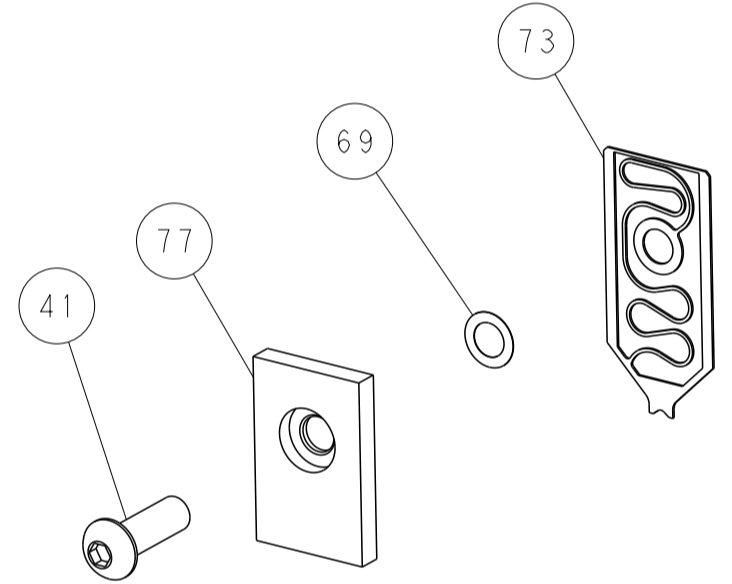
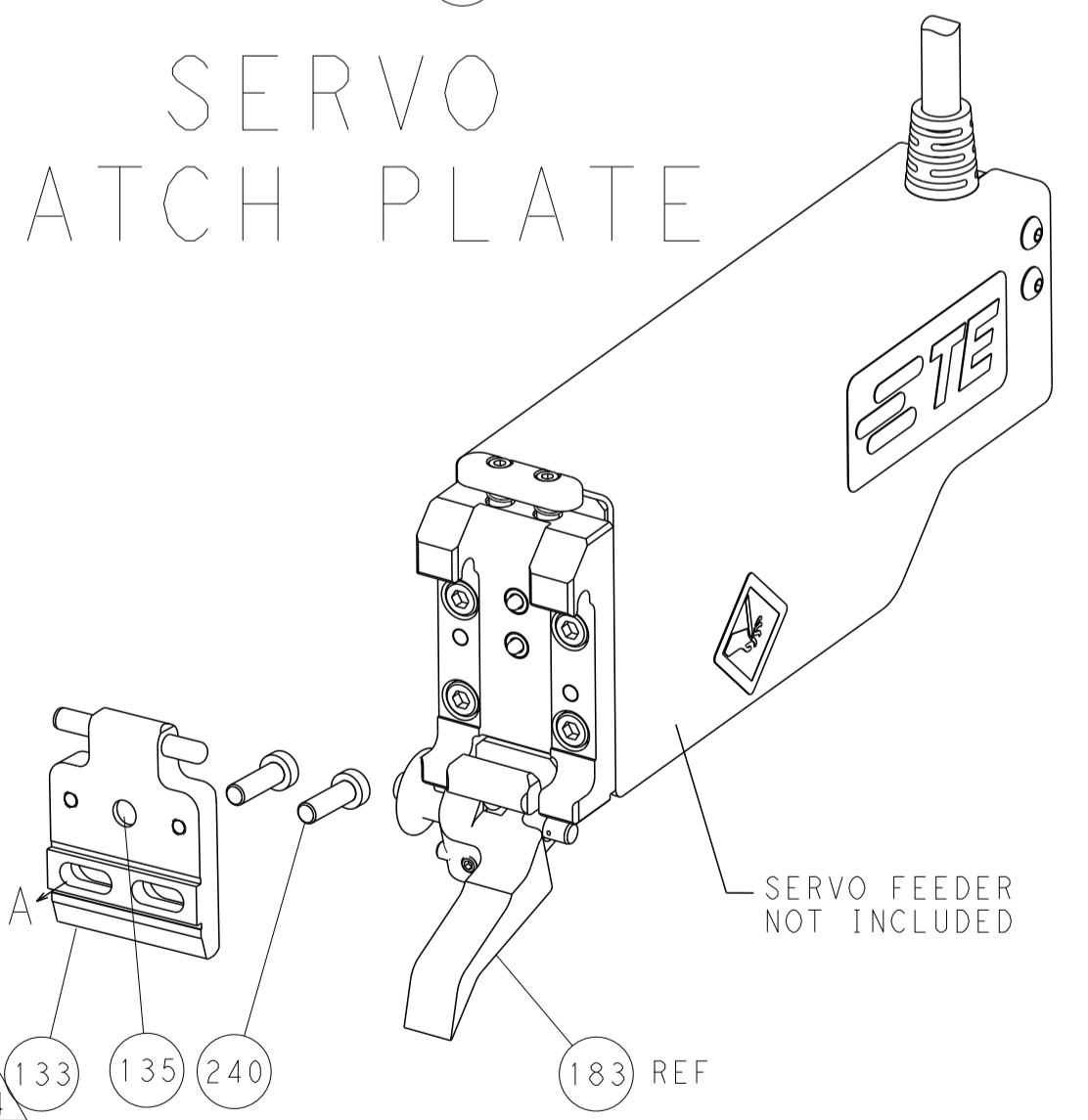
FEED TYPE
MECHANICAL



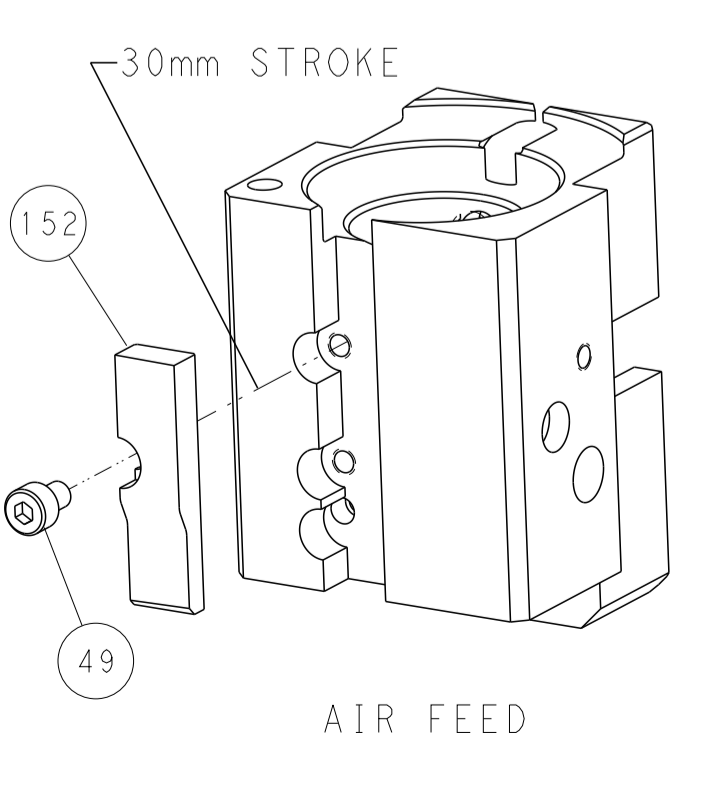
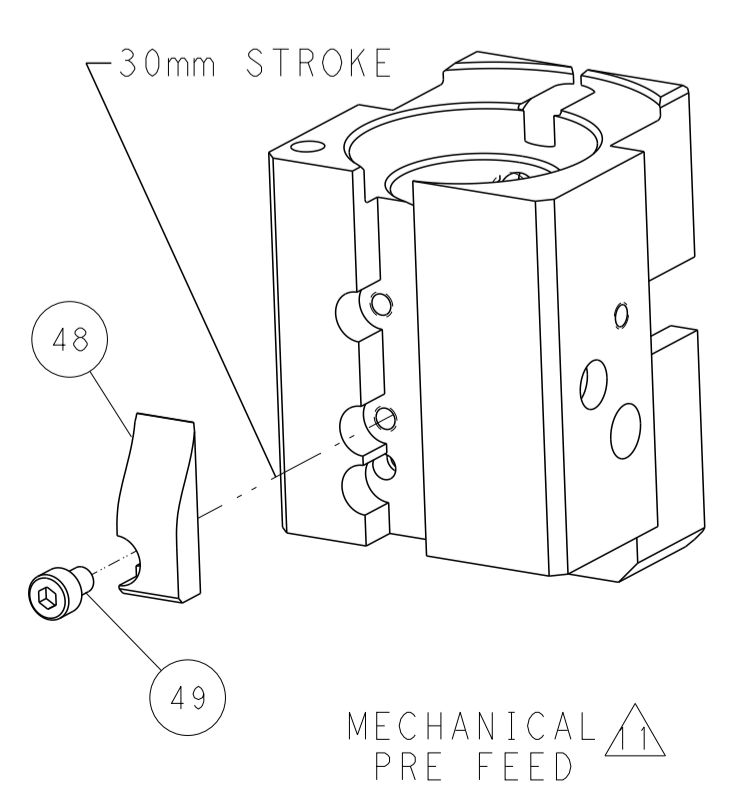
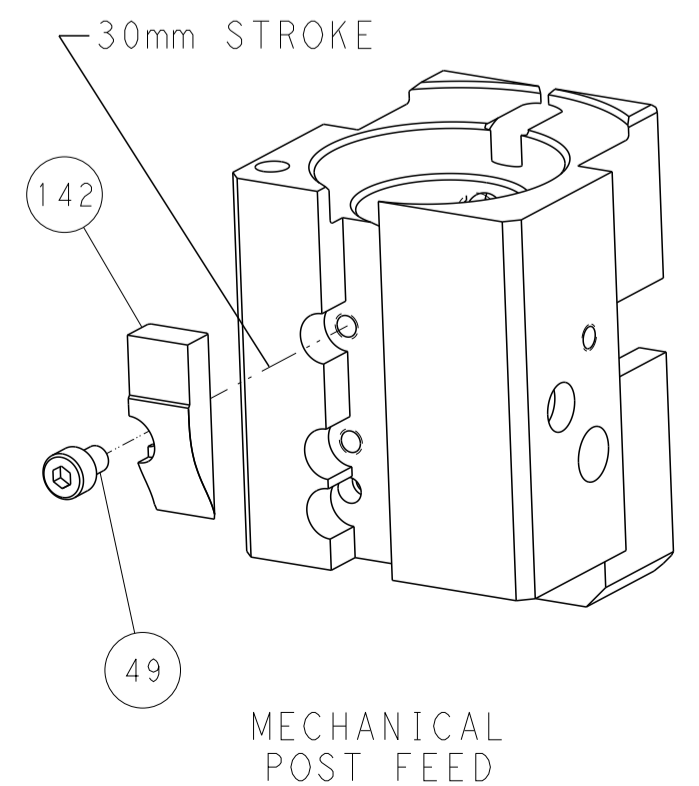
PNEUMATIC



SERVO LATCH PLATE



CAM POSITIONS



PACIFIC VERSION
 Shown on sheets 3 of 4 & 4 of 4
 (Atlantic version shown on sheets 1 of 4 & 2 of 4)

DIMENSIONS:		TOLERANCES UNLESS OTHERWISE SPECIFIED:		DWN R. HUANG 02JUN2017		STE TE Connectivity Harrisburg, PA 17105-3608	
mm	0 PLC ±	1 PLC ±	2 PLC ±	3 PLC ±	4 PLC ±	APVD L. ZHANG 02JUN2017	NAME Ocean End Feed Applicator
MATERIAL	FINISH	WEIGHT	SCALE	SHEET	OF	REV	RESTRICTED TO
			1:1	4	4	A	