

ATLANTIC VERSION TERMINATOR INTERFACE ADAPTER	PART NUMBER	REVISION	DESCRIPTION	FEED TYPE	APPLICATOR STYLE CONVERSION CHART						
					CONVERT TO	PART NUMBERS REQUIRED					
	2150710-1	A	FINE CRIMP HEIGHT ADJUST	MECHANICAL	PNEUMATIC FEED	2119950-1	2119792-2	-	2119641-1	-	2063440-1
					SERVO LATCH PLATE	2119951-1	1901697-1	8-2150710-5	-	2168400-7 (QUANTITY 2)	
					SMART APPLICATOR	2161326-1	-	8-2150710-4	-	-	
	2150710-2	A	FINE CRIMP HEIGHT ADJUST	PNEUMATIC	MECHANICAL FEED	2119949-1	2063961-1	5-18022-5	2119653-1	-	-
					SERVO LATCH PLATE	2119951-1	1901697-1	8-2150710-5	-	2168400-7 (QUANTITY 2)	
	2150710-5	A	FINE CRIMP HEIGHT ADJUST	SERVO LATCH PLATE ⁴	MECHANICAL FEED	2119949-1	2063961-1	5-18022-5	2119653-1	-	-
					PNEUMATIC FEED	2119950-1	2119792-2	-	2119641-1	-	2063440-1
2150710-6	A	NON-CRIMP HEIGHT ADJUST	SERVO LATCH PLATE ⁴	-	-	-	-	-	-	-	
2150710-7	A	FINE CRIMP HEIGHT ADJUST	NONE	-	-	-	-	-	-	-	
7-2150710-7	A	CRIMP TOOLING KIT	-	-	-	-	-	-	-	-	

APPLICATOR DATA		
CRIMP	SIZE	TYPE
WIRE	3.04 mm [.120]	F
INSUL	3.96 mm [.156]	F
APPL INSTRUCTIONS 408-10390		

TERMINAL DATA: KLAUKE/UTILUX TERMINAL UTILUX CRIMP SPECIFICATION			
TERMINAL NAME: RING TERMINAL			
WIRE STRIP LENGTH		INSULATION DIAMETER RANGE	
5.95-6.75 mm [.234-.266 IN]		Ø1.90-3.70 mm [.075-.146 IN]	
TERMINAL APPLICATION SPECIFICATION	H26810-37840 Rev 3		
TERMINALS APPLIED ¹³			
TE TERMINAL	KLAUKE/UTILUX TERMINAL	TE TERMINAL	KLAUKE/UTILUX TERMINAL
2303644-1	ET-1156B (26818)		

WIRE SIZE	CRIMP HEIGHT mm [INCH]	CRIMP HEIGHT REFERENCE SETTING
2.00mm2	2.00 +/- 0.05 [1.079 +/- .002]	7.7
1.50mm2	1.95 +/- 0.05 [1.077 +/- .002]	7.6
1.00mm2	1.85 +/- 0.05 [1.073 +/- .002]	8.4
0.75mm2	1.80 +/- 0.05 [1.071 +/- .002]	8.7

- ¹ RECOMMENDED SPARE PARTS
- ² GREASE BEARING SURFACES LIGHTLY
- 3. LUBRICATE DAILY PER THE APPLICATOR INSTRUCTION SHEET SUPPLIED WITH THE APPLICATOR.
- ⁴ APPLICATOR SPECIFIC DATA TO BE ENTERED INTO BLANK MEMORY CHIP AT ASSEMBLY. SEE BELOW FOR PART NUMBER:
 MECHANICAL FEED WITH "SMART APPLICATOR" CONVERSION: 8-2150710-4
 PNEUMATIC FEED WITH "SMART APPLICATOR" CONVERSION: 8-2150710-4
 SERVO FEED WITH "FINE CRIMP HEIGHT ADJUST": 8-2150710-5
 SERVO FEED WITH "NON-CRIMP HEIGHT ADJUST": 8-2150710-6
- 5. ADJUSTMENT OF THE STRIPPER MAY BE REQUIRED WHEN MOVING THE APPLICATOR BETWEEN BENCH AND LEADMAKER APPLICATIONS.
- ⁶ APPLY PART NUMBER 1-23419-5 LOCTITE TO THREADS OF ITEM 62.
 APPLY PART NUMBER 2-23419-6 LOCTITE TO THREADS OF ITEM 242.
 FOR -6 ONLY APPLY PART NUMBER 1-23419-5 LOCTITE TO THREADS OF ITEM 37.
- ⁷ GREASE THREADS, GROOVE AND O-RING ON ITEMS 35 & 252.
- ⁸ MAGNET, ITEM 166 MUST BE ORIENTED CORRECTLY IN ORDER TO PROPERLY ACTUATE THE COUNTER.
- ⁹ CRIMP HEIGHT REFERENCE SETTING WAS THE SETTING USED WHEN THE APPLICATOR WAS QUALIFIED AT THE FACTORY. ADJUSTMENT MAY BE NECESSARY WHEN RUNNING APPLICATOR IN THE FIELD.
- ¹⁰ SPARE FEED CAM STORAGE LOCATION REFER TO INSTRUCTION SHEET FOR ADDITIONAL INFORMATION.
- ¹¹ THE RECOMMENDED SET-UP FOR END FEED APPLICATORS IS POST-FEED WITH ITEM 2119653-1. THE APPLICATOR CAN BE CONFIGURED FOR PRE-FEED WITH ITEM 2119652-1 BUT MAY ENCOUNTER PROBLEMS WITH SOME APPLICATIONS. FEED ISSUES OR TERMINAL JAMMING MAY OCCUR IN THE PRE-FEED CONFIGURATION.
- ¹² WHEN ASSEMBLING -6 NON-CRIMP HEIGHT ADJUST APPLICATOR USE SHIM PACK 2119952-2 TO ALIGN APPLICATOR'S MAXIMUM WIRE CRIMP HEIGHT AT NORMAL TERMINATOR SHUT HEIGHT
- ¹³ TERMINAL LUBRICANT IS RECOMMENDED.

***WARNING**
 ON INSTALLATION, SET WIRE DISC, ITEM 40 TO LARGEST WIRE SIZE SETTING. USE OF SETTINGS BELOW MINIMUM REQUIRED CRIMP HEIGHT SETTING WILL CAUSE DAMAGE TO CRIMP TOOLING.

-77	-7	-6	-5	-2	-1	PART NO	DESCRIPTION	ITEM NO
-	-	1	-	-	-	2119957-2	APPLICATOR SHIM PACK	260
-	-	1	-	1	1	8-21084-0	O-RING, .676 ID, .070 DIA. MAT.	252
-	-	-	-	1	-	2119640-1	PUSH ROD, AIR FEED	250
-	-	-	-	1	-	1803259-1	BUSHING, FLANGED	249

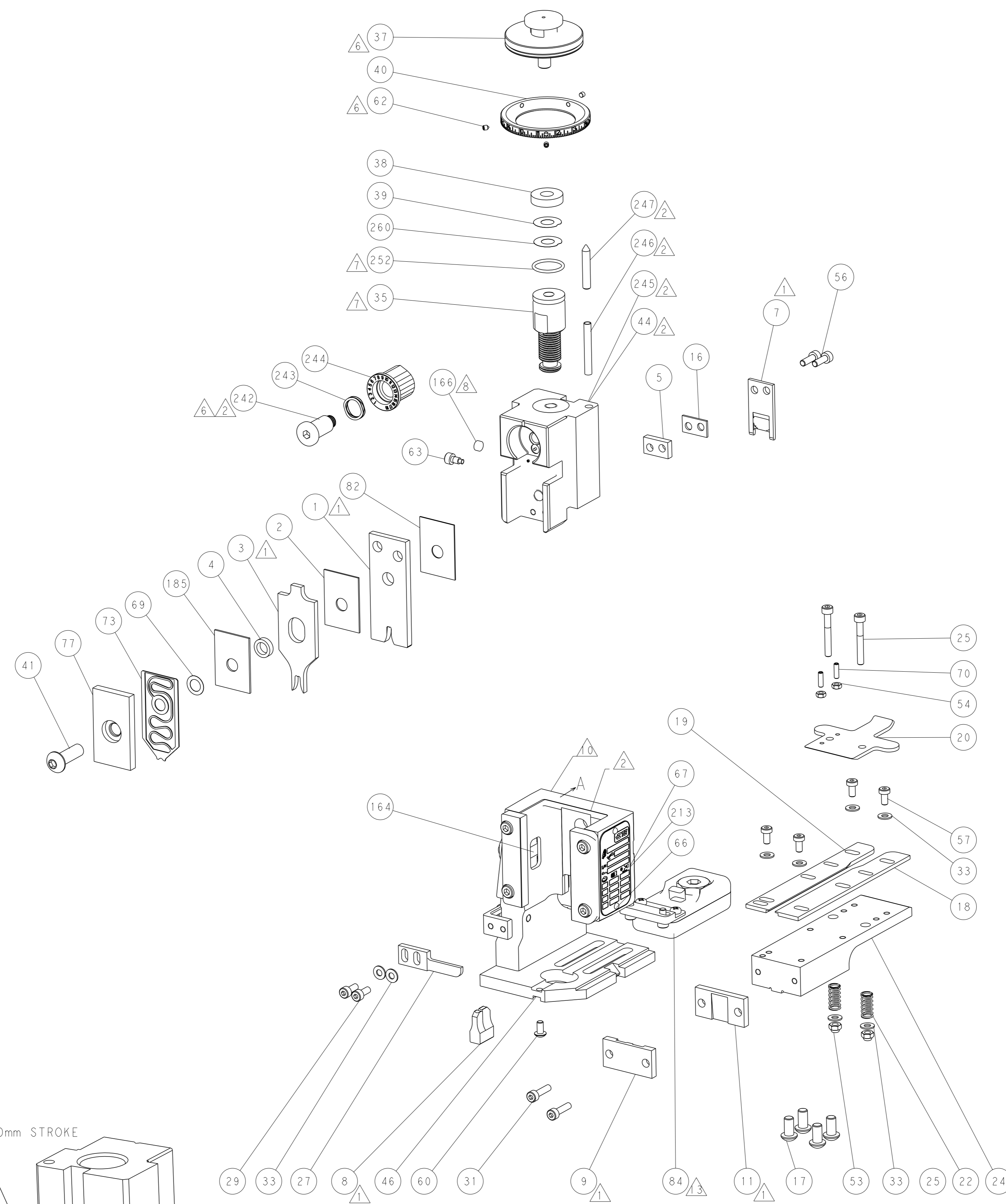
ATLANTIC VERSION
 Shown on sheets 1 of 4 & 2 of 4
 (Pacific version shown on sheets 3 of 4 & 4 of 4)

SET UP GAUGE 2119599-2	LOC A	DIST 66	REVISIONS			
			REV	DATE	BY	APPV
			A	RELEASED	190CT2016	LG TE

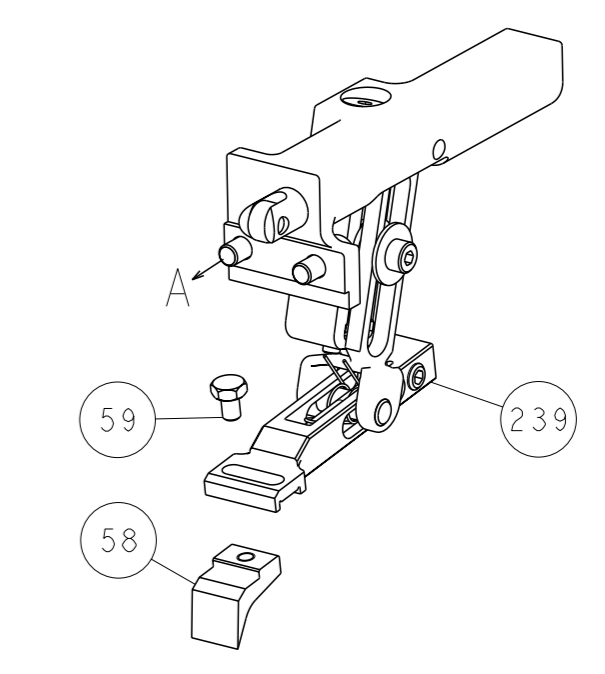
REV	DATE	BY	APPV	DESCRIPTION	ITEM NO			
-	-	-	1	-	2119641-1	FEED CAM, AIR FEED	248	
-	1	-	1	1	2119798-1	DETENT PIN	247	
-	1	-	1	1	1-22279-3	SPRING, COMPRESSION	246	
-	-	1	-	-	2119759-1	RAM, AMP STYLE, END FEED, NON-ADJUST	245	
-	1	1	1	1	2119082-7	CAM, SNAIL, INSULATION ADJUSTMENT	244	
-	1	1	1	1	2079764-1	WASHER, WAVE SPRING, CREST-TO-CREST	243	
-	1	1	1	1	2119083-1	RETAINER, INSULATION DIAL	242	
-	-	2	2	-	2168400-7	SHCS, LOW HEAD, RoHS, M5 X 10	240	
-	-	-	-	1	2119580-1	MECHANICAL FEED ASSEMBLY	239	
-	-	-	-	1	2063440-1	AIR FEED MODULE	238	
-	-	1	1	-	2119740-2	TAG, IDENTIFICATION	213	
-	1	1	1	1	1-455888-0	SPACER, CRIMPER	185	
-	-	REFREF	-	-	1901697-1	FEED FINGER ASSEMBLY, EF	183	
-	-	-	-	2	21045-3	RING, RETAIN, EXTERN, 3/16 CRESCENT	172	
-	1	1	1	1	994969-1	MAGNET, RARE EARTH HIGH ENERGY	166	
-	REFREFREFREFREFREF	-	-	-	994970-2	COUNTER, MAGNETIC	164	
-	-	-	-	1	240638-1	SPRING, FEED FINGER	163	
-	-	-	-	1	3-23627-7	PIN, RETAIN, GRVD, 3/16 X .854	137	
-	-	REFREF	-	-	SEE NOTE 4	MEMORY CHIP, PROGRAMMED	135	
-	-	1	1	-	1633743-1	SERVO FEED LATCH ASM	133	
¹³	-	1	1	1	2119955-2	ASSY, LUBRICATOR, END FEED	84	
-	1	1	1	1	455888-5	SPACER, CRIMPER	82	
-	1	1	1	1	1803203-1	BLOCK, FRONT DEPRESSOR	77	
-	1	1	1	1	1-2119791-0	DEPRESSOR, WIRE	73	
-	1	1	1	1	2119956-2	DOCUMENTATION PACKAGE	71	
-	2	2	2	2	2-18032-2	SCR, SET, FLT POINT M3 X 10.0	70	
-	1	1	1	1	2119943-1	WASHER, SPACER	69	
-	1	-	-	1	2119740-1	TAG, IDENTIFICATION	67	
-	2	2	2	2	2168078-1	SCREW, DRIVE, RH, RoHS, 2 x .188	66	
-	1	-	1	1	2119793-1	LIMITER, ADJUSTMENT BOLT	63	
⁶	-	3	-	3	3	992763-5	SCR, SET, SOC, CONE POINT, M3 X 4.0	62
-	1	1	1	1	2079383-4	SCR, BHSC, RoHS (M4 X 8)	60	
-	-	-	-	-	1	5-18022-5	SCR, HEX HD CAP, M4 X 6.0	59
-	-	-	-	-	1	2063961-1	FEED FINGER	58
-	4	4	4	4	4	2168400-4	SHCS, LOW HEAD, RoHS, M4 X 8	57
-	2	2	2	2	2	2168083-3	SCR, SKT HD CAP, RoHS, M4 X 12.0	56
-	2	2	2	2	2	5018030-1	NUT, HEX, REG, RoHS, M3	54
-	2	2	2	2	2	986965-8	NUT, LOCK, HEX, TORQUE (M4)	53
-	-	-	-	1	-	2119792-2	PAWL, EF, AIR	51
-	-	-	-	1	2	18023-9	SCR, SKT HD CAP M4 X 6.0	49
-	-	-	-	-	1	2119652-1	FEED CAM, PRE FEED	48
-	-	-	-	-	1	2119653-1	FEED CAM, POST FEED	47
-	1	1	1	1	1	2119655-5	APPLICATOR BASIC ASSEMBLY, EF	46
-	1	-	1	1	1	2119369-1	RAM, AMP STYLE, END FEED	44
-	1	1	1	1	1	2079383-7	SCR, BHSC, RoHS (M8 X 25)	41
-	1	-	1	1	1	2119645-1	DISC, NUMBERED FA WIRE ADJUSTMENT	40
-	1	-	1	1	1	2119957-1	APPLICATOR SHIM PACK	39
-	1	1	1	1	1	2119644-2	RAM WASHER, PRECISION	38
⁶	-	1	1	1	1	2119085-1	FA HEAD, ATLANTIC STYLE	37
-	1	-	1	1	1	2119092-1	BOLT, ADJUSTMENT	35
-	8	8	8	8	8	1-18028-2	WASHER, FLAT, REG M4	33
-	2	2	2	2	2	2168083-8	SCR, SKT HD CAP, RoHS, M4 X 16	31
-	2	2	2	2	2	1-2168083-0	SCR, SKT HD CAP, RoHS, M4 X 10	29
-	1	1	1	1	1	240639-1	STRIPPER (MACHINING)	27
-	2	2	2	2	2	1-2168083-5	SCR, SKT HD CAP, RoHS, M4 X 30	25
-	1	1	1	1	1	1-1752371-2	PLATE, STRIP GUIDE	24
-	2	2	2	2	2	2-22281-3	SPRING, COMPRESSION	22
-	1	1	1	1	1	1803292-1	DRAG	20
-	1	1	1	1	1	1-1901696-8	STRIP GUIDE, REAR	19
-	1	1	1	1	1	1-1901695-8	STRIP GUIDE, FRONT	18
-	4	4	4	4	4	1-2079383-1	SCR, BHSC, RoHS (M6 X 12)	17
-	1	1	1	1	1	5-240641-4	SPACER	16
¹	-	1	1	1	1	240644-9	PLATE, REAR SHEAR	11
-	-	-	-	-	-	-	-	10
¹	-	1	1	1	1	690482-4	PLATE, FRONT SHEAR	9
¹	1	1	1	1	1	6-1803059-0	ANVIL, COMBINATION, END FEED	8
¹	-	1	1	1	1	1-2217206-1	BLADE, SLUG	7
-	-	-	-	-	-	-	-	6
-	1	1	1	1	1	240641-4	SPACER	5
-	1	1	1	1	1	3-238011-1	BLOCK, CRIMPER SPACER	4
¹	1	1	1	1	1	8-1803187-5	CRIMPER, INSULATION F	3
-	1	1	1	1	1	455888-8	SPACER, CRIMPER	2
¹	1	1	1	1	1	456423-1	CRIMPER, WIRE PREMIUM	1

DIMENSIONS:		TOLERANCES UNLESS OTHERWISE SPECIFIED:		DATE		NAME	
mm	0 PLC ±	1 PLC ±	2 PLC ±	3 PLC ±	4 PLC ±	APPROVED	DATE
	±	±	±	±	±	L. HUANG	06SEP2016
MATERIAL:	FINISH:	WEIGHT:	SCALE:	SHEET:	REV:	L. ZHANG	06SEP2016
			1:1	1	4	L. ZHANG	06SEP2016

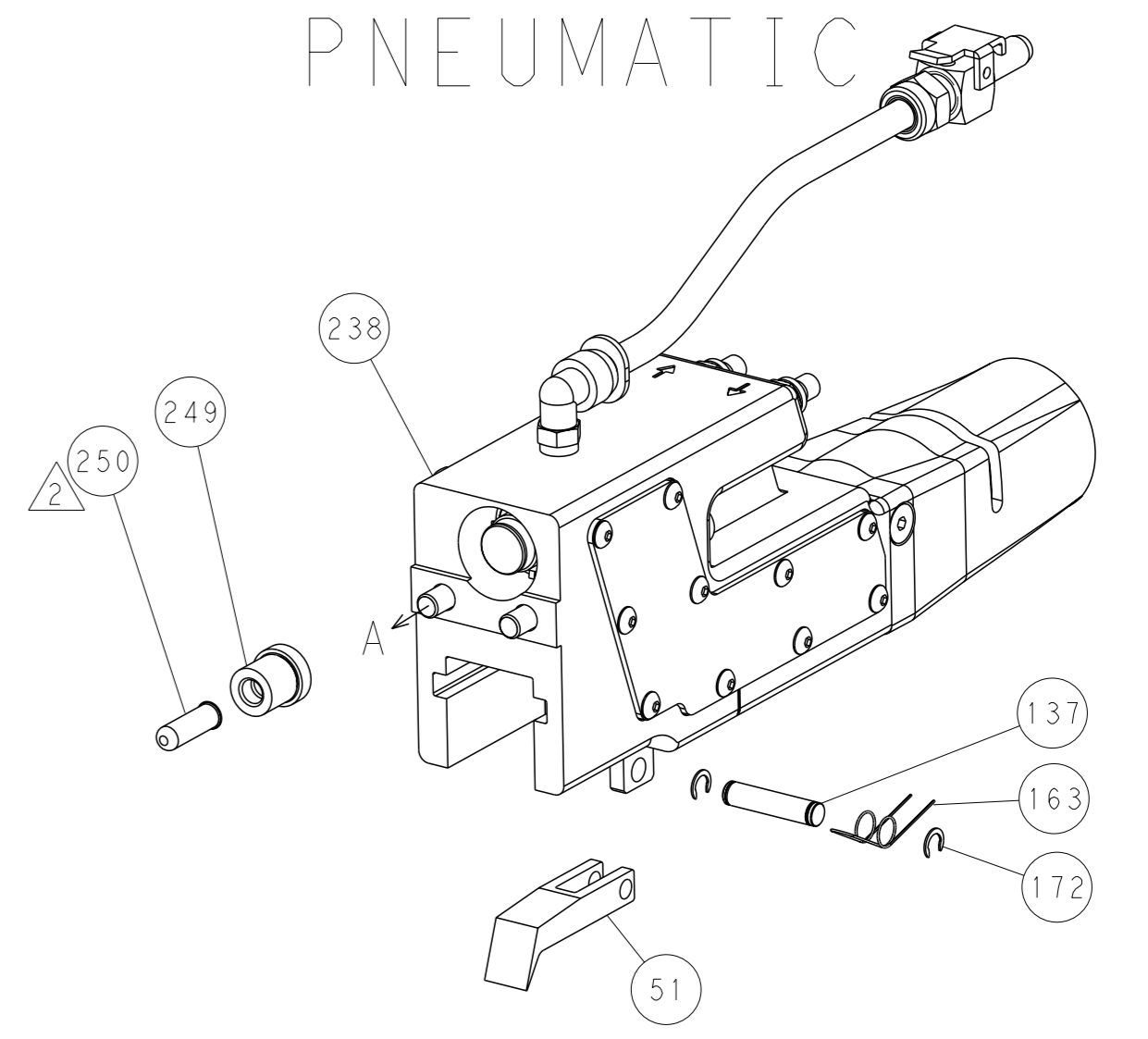
LOC	DIST	REVISIONS			
A	66	REV	DATE	OWN	APVD
		1	SEE SHEET 1		



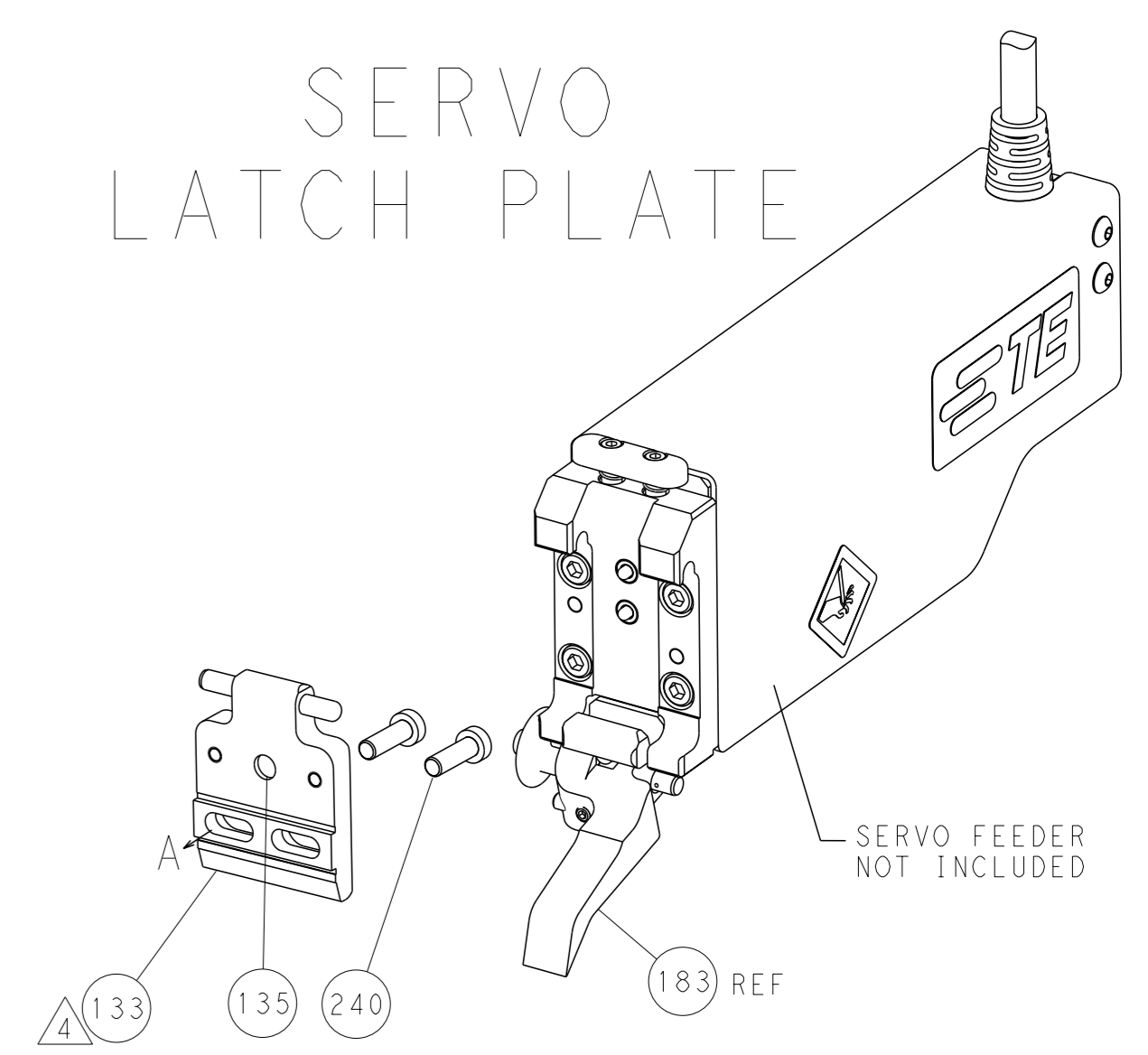
FEED TYPE
MECHANICAL



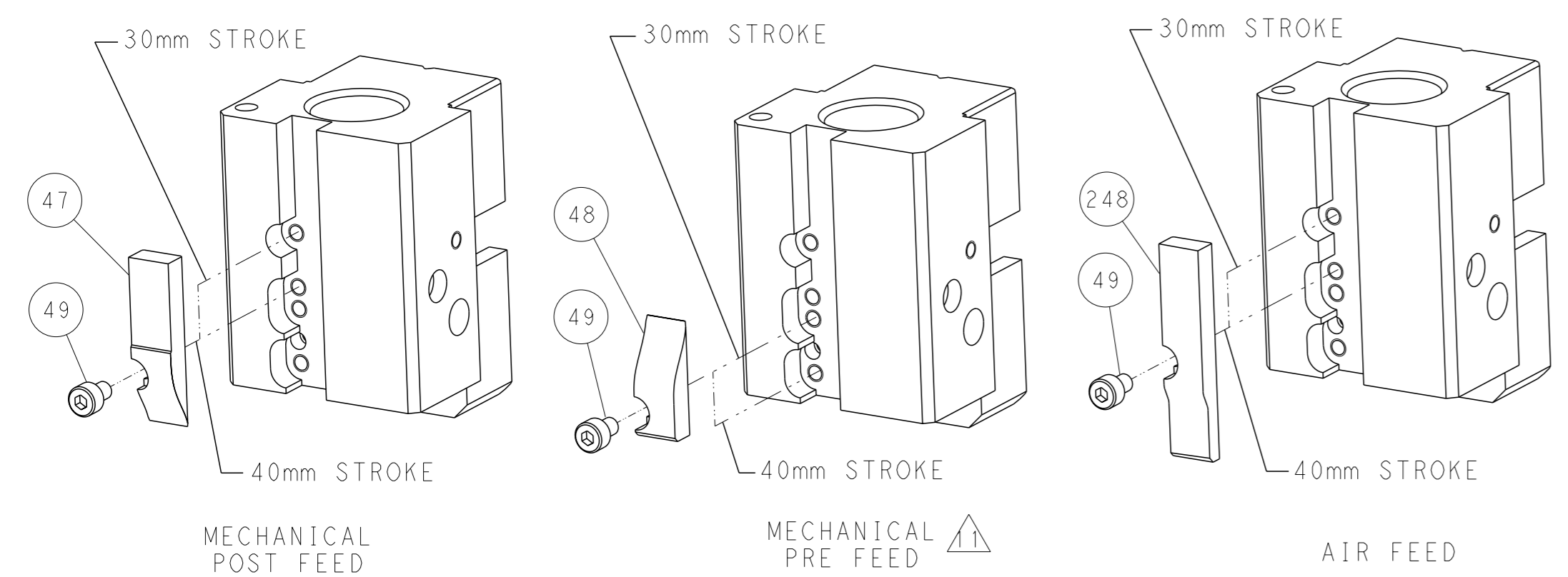
PNEUMATIC



SERVO
LATCH PLATE



CAM POSITIONS



ATLANTIC VERSION
 Shown on sheets 1 of 4 & 2 of 4
 (Pacific version shown on sheets 3 of 4 & 4 of 4)

<small>THIS DRAWING IS UNPUBLISHED. RELEASED FOR PUBLICATION BY TYCO ELECTRONICS CORPORATION. ALL RIGHTS RESERVED.</small>		OWN: K. HUANG 06SEP2016 CHK: L. ZHANG 06SEP2016 APVD: L. ZHANG 06SEP2016	NAME: Ocean End Feed Applicator SIZE: A1 CAGE CODE: 00779 DRAWING NO: C=2150710	TE Connectivity Harrisburg, PA 17105-3608
DIMENSIONS: mm TOLERANCES UNLESS OTHERWISE SPECIFIED: 0 PLC ± 1 PLC ± 2 PLC ± 3 PLC ± 4 PLC ± ANGLES ° ± FINISH	TOLERANCES UNLESS OTHERWISE SPECIFIED: 0 PLC ± 1 PLC ± 2 PLC ± 3 PLC ± 4 PLC ± ANGLES ° ± FINISH	WEIGHT: - SCALE: 1:1 SHEET: 2 of 4 REV: A	RESTRICTED TO: - SCALE: 1:1 SHEET: 2 of 4 REV: A	CUSTOMER ACCESSIBLE PRODUCTION DRAWING

PACIFIC VERSION TERMINATOR INTERFACE ADAPTER	PART NUMBER	REVISION	DESCRIPTION	FEED TYPE	APPLICATOR STYLE CONVERSION CHART						
					CONVERT TO	PART NUMBERS REQUIRED					
	2-2150710-1	A	FINE CRIMP HEIGHT ADJUST	MECHANICAL	PNEUMATIC FEED	2119950-1	2119792-2	-	2119641-2	-	2063440-1
					SERVO LATCH PLATE	2119951-1	1901697-1	8-2150710-5	-	-	2168400-7 (QUANTITY 2)
					SMART APPLICATOR	2161326-1	-	8-2150710-4	-	-	-
	2-2150710-2	A	FINE CRIMP HEIGHT ADJUST	PNEUMATIC	MECHANICAL FEED	2119949-1	2063961-1	5-18022-5	2119653-2	-	-
					SERVO LATCH PLATE	2119951-1	1901697-1	8-2150710-5	-	-	2168400-7 (QUANTITY 2)
					SMART APPLICATOR	2161326-1	-	8-2150710-4	-	-	-
	2-2150710-5	A	FINE CRIMP HEIGHT ADJUST	SERVO LATCH PLATE	MECHANICAL FEED	2119949-1	2063961-1	5-18022-5	2119653-2	-	-
					PNEUMATIC FEED	2119950-1	2119792-2	-	2119641-2	-	2063440-1
	2-2150710-7	A	FINE CRIMP HEIGHT ADJUST	NONE	-	-	-	-	-	-	-
	7-2150710-7	A	CRIMP TOOLING KIT	-	-	-	-	-	-	-	-

APPLICATOR DATA		
CRIMP	SIZE	TYPE
WIRE	3.04 mm [1.201]	F
INSUL	3.96 mm [1.556]	F
APPL INSTRUCTIONS 408-10390		

TERMINAL DATA: KLAUKE/UTILUX TERMINAL UTILUX CRIMP SPECIFICATION			
TERMINAL NAME: RING TERMINAL			
WIRE STRIP LENGTH		INSULATION DIAMETER RANGE	
5.95-6.75 mm [1.234-.266 IN]		Ø1.90-3.70 mm [1.075-.146 IN]	
TERMINAL APPLICATION SPECIFICATION	H26810-37840 Rev 3	-	-
TERMINALS APPLIED			
TE TERMINAL	KLAUKE/UTILUX TERMINAL	TE TERMINAL	KLAUKE/UTILUX TERMINAL
2303644-1	ET-1156B (26818)		

WIRE SIZE	CRIMP HEIGHT mm [INCH]	CRIMP HEIGHT REFERENCE SETTING
2.00mm2	2.00 +/- 0.05 [1.079 +/- .002]	7.7
1.50mm2	1.95 +/- 0.05 [1.077 +/- .002]	7.6
1.00mm2	1.85 +/- 0.05 [1.073 +/- .002]	8.4
0.75mm2	1.80 +/- 0.05 [1.071 +/- .002]	8.7

- RECOMMENDED SPARE PARTS
- GREASE BEARING SURFACES LIGHTLY
- LUBRICATE DAILY PER THE APPLICATOR INSTRUCTION SHEET SUPPLIED WITH THE APPLICATOR.
- APPLICATOR SPECIFIC DATA TO BE ENTERED INTO BLANK MEMORY CHIP AT ASSEMBLY. SEE BELOW FOR PART NUMBER:
 MECHANICAL FEED WITH "SMART APPLICATOR" CONVERSION: 8-2150710-4
 PNEUMATIC FEED WITH "SMART APPLICATOR" CONVERSION: 8-2150710-4
 SERVO FEED WITH "FINE CRIMP HEIGHT ADJUST": 8-2150710-5
- ADJUSTMENT OF THE STRIPPER MAY BE REQUIRED WHEN MOVING THE APPLICATOR BETWEEN BENCH AND LEADMAKER APPLICATIONS.
- APPLY PART NUMBER 1-23419-5 LOCTITE TO THREADS OF ITEM 62.
 APPLY PART NUMBER 2-23419-6 LOCTITE TO THREADS OF ITEM 242.
- GREASE THREADS, GROOVE AND O-RING ON ITEMS 139 & 153.
- MAGNET, ITEM 166 MUST BE ORIENTED CORRECTLY IN ORDER TO PROPERLY ACTUATE THE COUNTER.
- CRIMP HEIGHT REFERENCE SETTING WAS THE SETTING USED WHEN THE APPLICATOR WAS QUALIFIED AT THE FACTORY. ADJUSTMENT MAY BE NECESSARY WHEN RUNNING APPLICATOR IN THE FIELD.
- SPARE FEED CAM STORAGE LOCATION REFER TO INSTRUCTION SHEET FOR ADDITIONAL INFORMATION.
- THE RECOMMENDED SET-UP FOR END FEED APPLICATORS IS POST-FEED WITH ITEM 2119653-1. THE APPLICATOR CAN BE CONFIGURED FOR PRE-FEED WITH ITEM 2119652-1 BUT MAY ENCOUNTER PROBLEMS WITH SOME APPLICATIONS. FEED ISSUES OR TERMINAL JAMMING MAY OCCUR IN THE PRE-FEED CONFIGURATION.
- TERMINAL LUBRICANT IS RECOMMENDED.

***WARNING**
 ON INSTALLATION, SET WIRE DISC, ITEM 40 TO LARGEST WIRE SIZE SETTING. USE OF SETTINGS BELOW MINIMUM REQUIRED CRIMP HEIGHT SETTING WILL CAUSE DAMAGE TO CRIMP TOOLING.

-77-27-25-22-21	PART NO	DESCRIPTION	ITEM NO
- 1 1 1 1 1	2119782-1	FINE ADJUST HEAD ASM, PACIFIC STYLE	251
- - - 1 -	2119640-1	PUSH ROD, AIR FEED	250

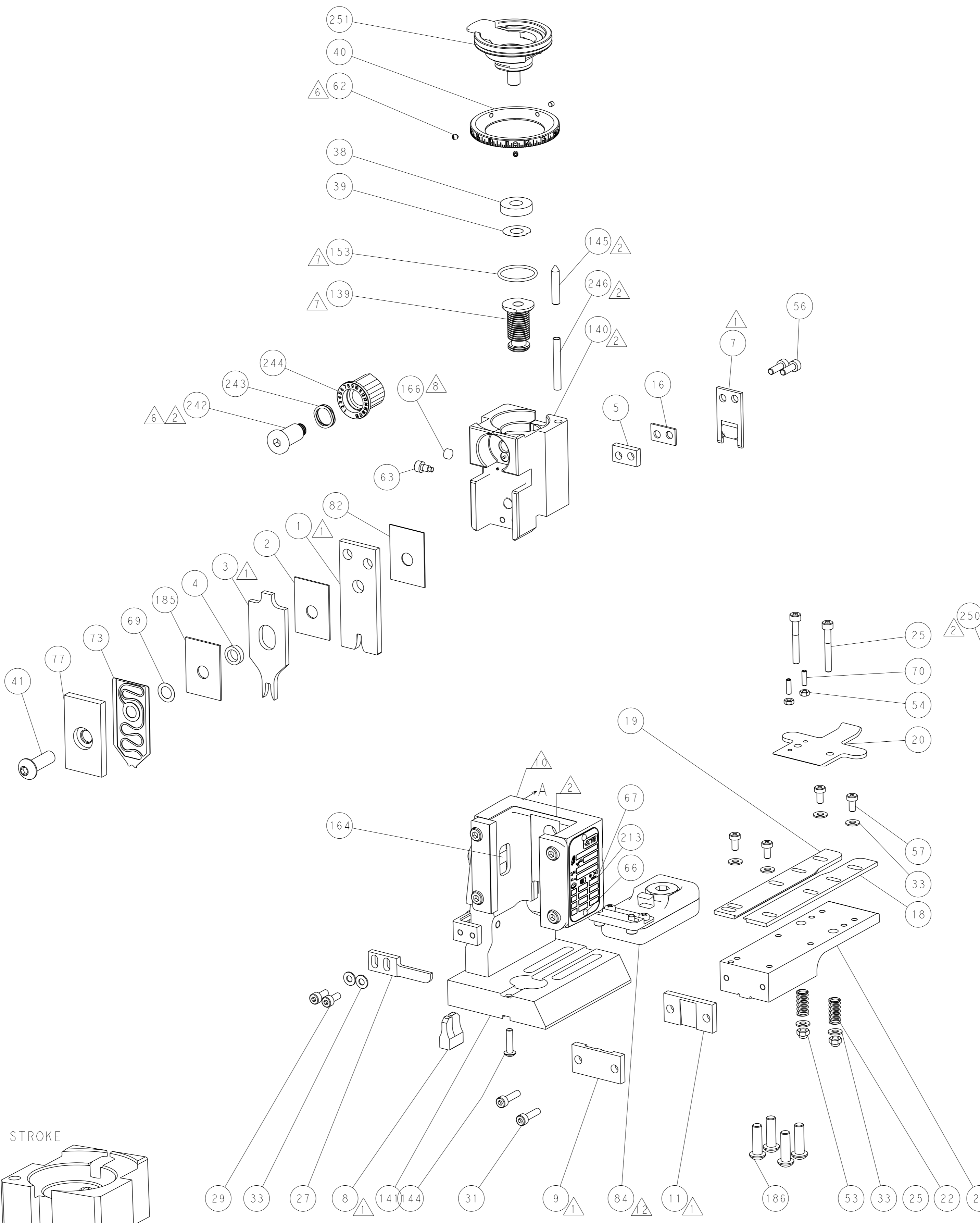
PACIFIC VERSION
 Shown on sheets 3 of 4 & 4 of 4
 (Atlantic version shown on sheets 1 of 4 & 2 of 4)

SET UP GAUGE	LOC	DIST	REVISIONS			
2119599-2	A	66	REV	DATE	BY	APPV
			-	-	-	-
			SEE SHEET 1			

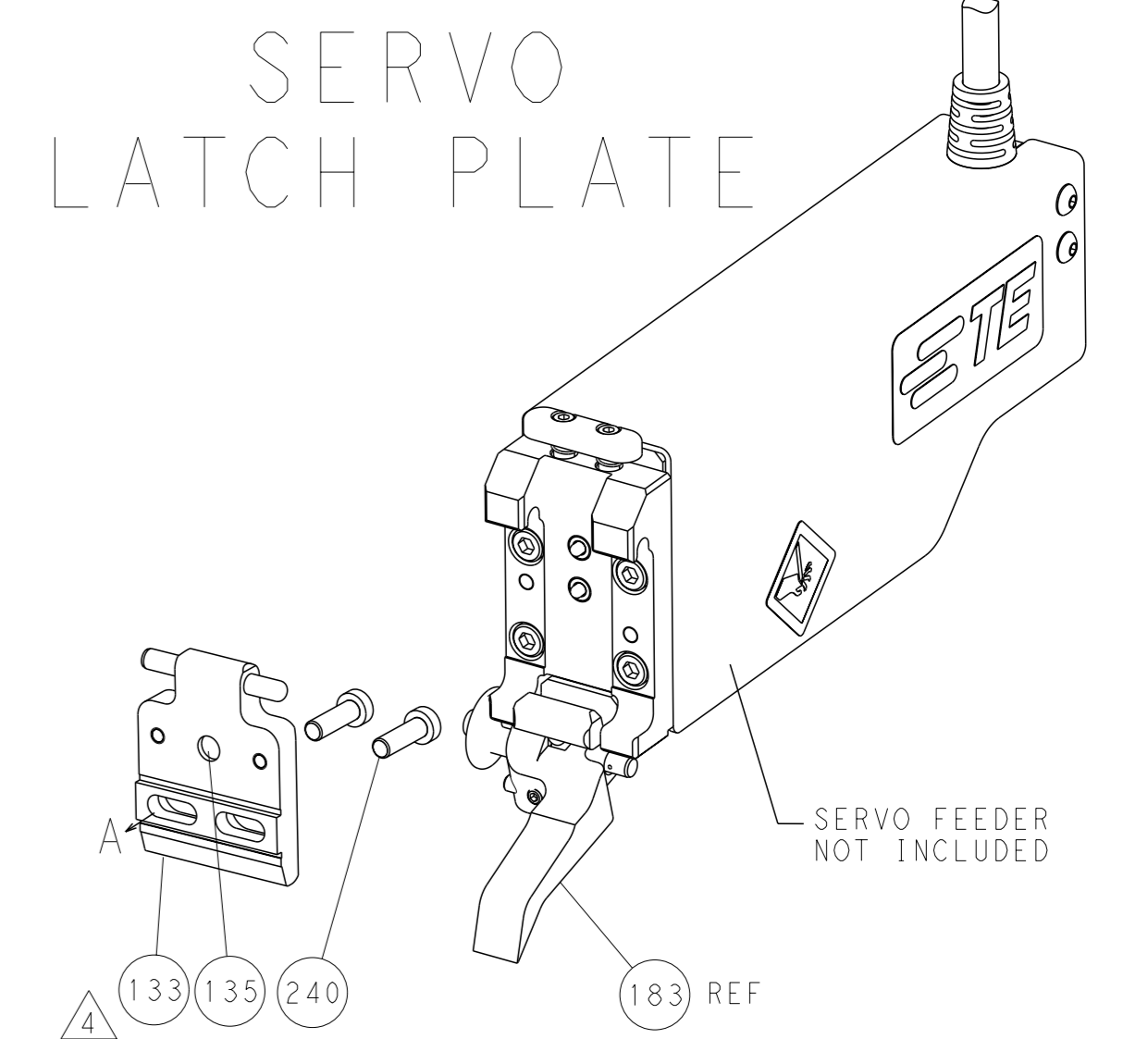
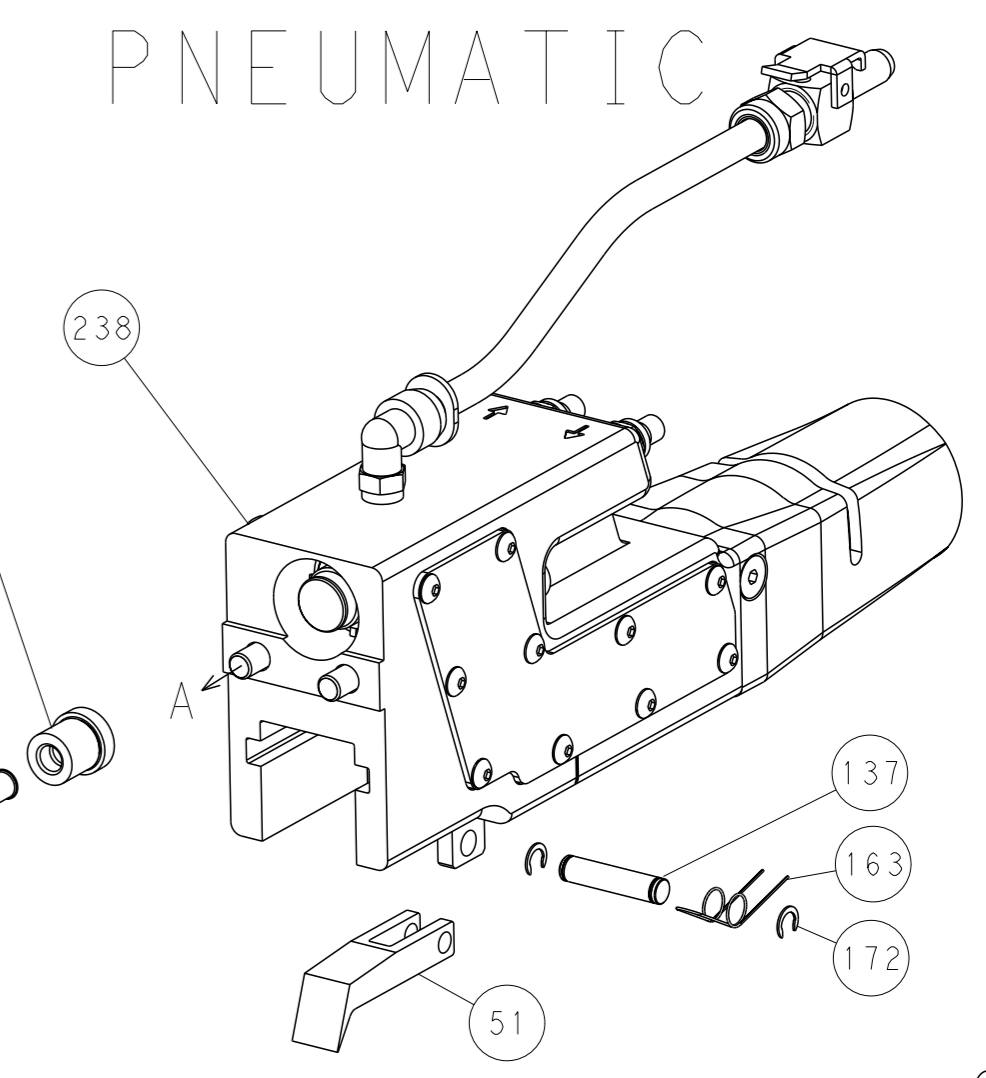
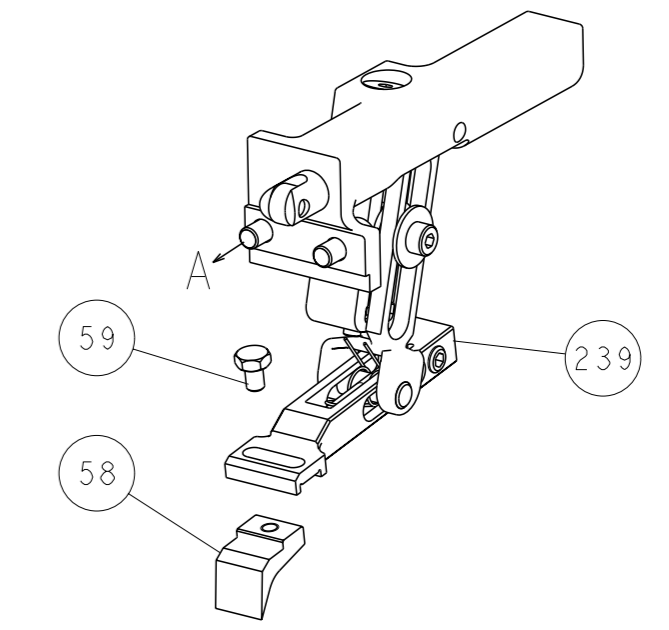
REV	DATE	BY	APPV	DESCRIPTION	ITEM NO
- - - 1 -				1803259-1 BUSHING, FLANGED	249
- 1 1 1 1				1-22279-3 SPRING, COMPRESSION	246
- 1 1 1 1				2119082-7 CAM, SNAIL, INSULATION ADJUSTMENT	244
- 1 1 1 1				2079764-1 WASHER, WAVE SPRING, CREST-TO-CREST	243
- 1 1 1 1				2119083-1 RETAINER, INSULATION DIAL	242
- - 2 - -				2168400-7 SHCS, LOW HEAD, RoHS, M5 X 10	240
- - - 1 -				2119580-1 MECHANICAL FEED ASSEMBLY	239
- - - 1 -				2063440-1 AIR FEED MODULE	238
- - 1 - -				2119740-2 TAG, IDENTIFICATION	213
- 4 4 4 4				2079383-9 SCR, BHSC, RoHS (M6 X 20)	186
- 1 1 1 1				1-455888-0 SPACER, CRIMPER	185
- - REF - -				1901697-1 FEED FINGER ASSEMBLY, EF	183
- - - 2 -				21045-3 RING, RETAIN, EXTERN, 3/16 CRESCENT	172
- 1 1 1 1				994969-1 MAGNET, RARE EARTH HIGH ENERGY	166
- REFREFREFREF				994970-2 COUNTER, MAGNETIC	164
- - - 1 -				240638-1 SPRING, FEED FINGER	163
- 1 1 1 1				8-21084-1 O-RING, .801 ID, .070 DIA. MAT.	153
- - - 1 -				2119641-2 FEED CAM, AIR FEED	152
- 1 1 1 1				2119798-2 DETENT PIN	145
- 1 1 1 1				2079383-8 SCR, BHSC, RoHS (M4 X 16)	144
- - - - 1				2119653-2 FEED CAM, POST FEED	142
- 1 1 1 1				2119655-6 APPLICATOR BASIC ASSEMBLY, EF	141
- 1 1 1 1				2119651-1 RAM, ASIAN STYLE, END FEED	140
- 1 1 1 1				2119092-2 BOLT, ADJUSTMENT	139
- - - 1 -				3-23627-7 PIN, RETAIN, GRVD, 3/16 X .854	137
- - REF - -				SEE NOTE 4 MEMORY CHIP, PROGRAMMED	135
- - 1 - -				1633743-1 SERVO FEED LATCH ASM	133
- 1 1 1 1				2119955-2 ASSY, LUBRICATOR, END FEED	84
- 1 1 1 1				455888-5 SPACER, CRIMPER	82
- 1 1 1 1				1803203-1 BLOCK, FRONT DEPRESSOR	77
- 1 1 1 1				1-2119791-0 DEPRESSOR, WIRE	73
- 1 1 1 1				2119956-2 DOCUMENTATION PACKAGE	71
- 2 2 2 2				2-18032-2 SCR, SET, FLT POINT M3 X 10.0	70
- 1 1 1 1				2119943-1 WASHER, SPACER	69
- 1 - 1 1				2119740-1 TAG, IDENTIFICATION	67
- 2 2 2 2				2168078-1 SCREW, DRIVE, RH, RoHS, 2 x .188	66
- 1 1 1 1				2119793-1 LIMITER, ADJUSTMENT BOLT	63
- 3 3 3 3				992763-5 SCR, SET, SOC, CONE POINT, M3 X 4.0	62
- - - - 1				5-18022-5 SCR, HEX HD CAP, M4 X 6.0	59
- - - - 1				2063961-1 FEED FINGER	58
- 4 4 4 4				2168400-4 SHCS, LOW HEAD, RoHS, M4 X 8	57
- 2 2 2 2				2168083-3 SCR, SKT HD CAP, RoHS, M4 X 12.0	56
- 2 2 2 2				5018030-1 NUT, HEX, REG, RoHS, M3	54
- 2 2 2 2				986965-8 NUT, LOCK, HEX, TORQUE (M4)	53
- - - 1 -				2119792-2 PAWL, EF, AIR	51
- - - 1 2				18023-9 SCR, SKT HD CAP M4 X 6.0	49
- - - - 1				2119652-1 FEED CAM, PRE FEED	48
- 1 1 1 1				2079383-7 SCR, BHSC, RoHS (M8 X 25)	41
- 1 1 1 1				2119645-1 DISC, NUMBERED FA WIRE ADJUSTMENT	40
- 1 1 1 1				2119957-1 APPLICATOR SHIM PACK	39
- 1 1 1 1				2119644-2 RAM WASHER, PRECISION	38
- 8 8 8 8				1-18028-2 WASHER, FLAT, REG M4	33
- 2 2 2 2				2168083-8 SCR, SKT HD CAP, RoHS, M4 X 16	31
- 2 2 2 2				1-2168083-0 SCR, SKT HD CAP, RoHS, M4 X 10	29
- 1 1 1 1				240639-1 STRIPPER (MACHINING)	27
- 2 2 2 2				1-2168083-5 SCR, SKT HD CAP, RoHS, M4 X 30	25
- 1 1 1 1				1-1752371-2 PLATE, STRIP GUIDE	24
- 2 2 2 2				2-22281-3 SPRING, COMPRESSION	22
- 1 1 1 1				1803292-1 DRAG	20
- 1 1 1 1				1-1901696-8 STRIP GUIDE, REAR	19
- 1 1 1 1				1-1901695-8 STRIP GUIDE, FRONT	18
- 1 1 1 1				5-240641-4 SPACER	16
- 1 1 1 1				240644-9 PLATE, REAR SHEAR	11
- - - - -				-	10
- 1 1 1 1				690482-4 PLATE, FRONT SHEAR	9
1 1 1 1 1				6-1803059-0 ANVIL, COMBINATION, END FEED	8
- 1 1 1 1				1-2217206-1 BLADE, SLUG	7
- - - - -				-	6
- 1 1 1 1				240641-4 SPACER	5
- 1 1 1 1				3-238011-1 BLOCK, CRIMPER SPACER	4
1 1 1 1 1				8-1803187-5 CRIMPER, INSULATION F	3
- 1 1 1 1				455888-8 SPACER, CRIMPER	2
1 1 1 1 1				456423-1 CRIMPER, WIRE PREMIUM	1

DIMENSIONS:		TOLERANCES UNLESS OTHERWISE SPECIFIED:		APPROVED:		NAME:	
mm	0 PLC ±	1 PLC ±	2 PLC ±	3 PLC ±	4 PLC ±	APPROVED	NAME
	FINISH	ANGLES		DATE	DATE	DATE	DATE
MATERIAL	WEIGHT	SCALE	SHEET	OF	REV	Customer Accessible Production Drawing	

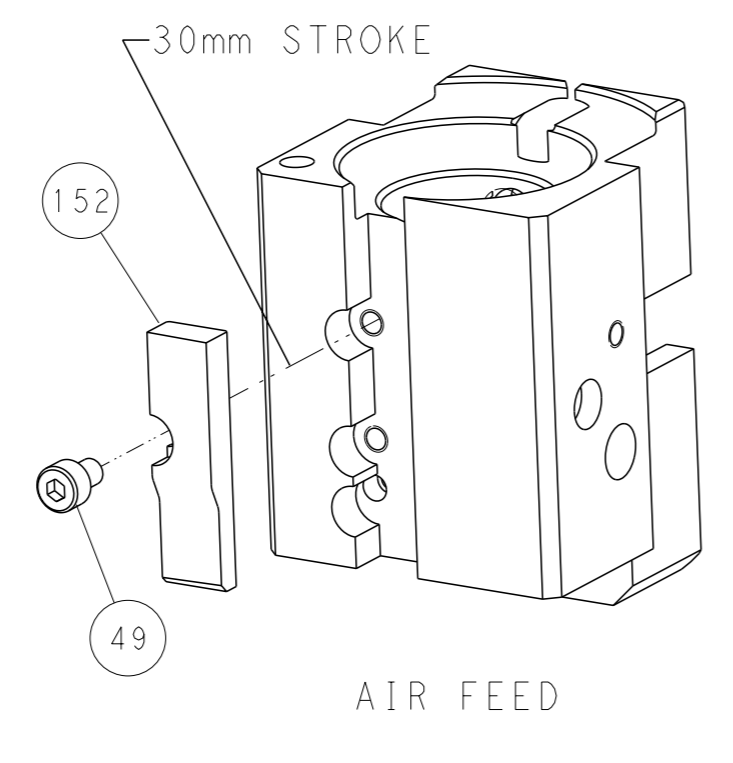
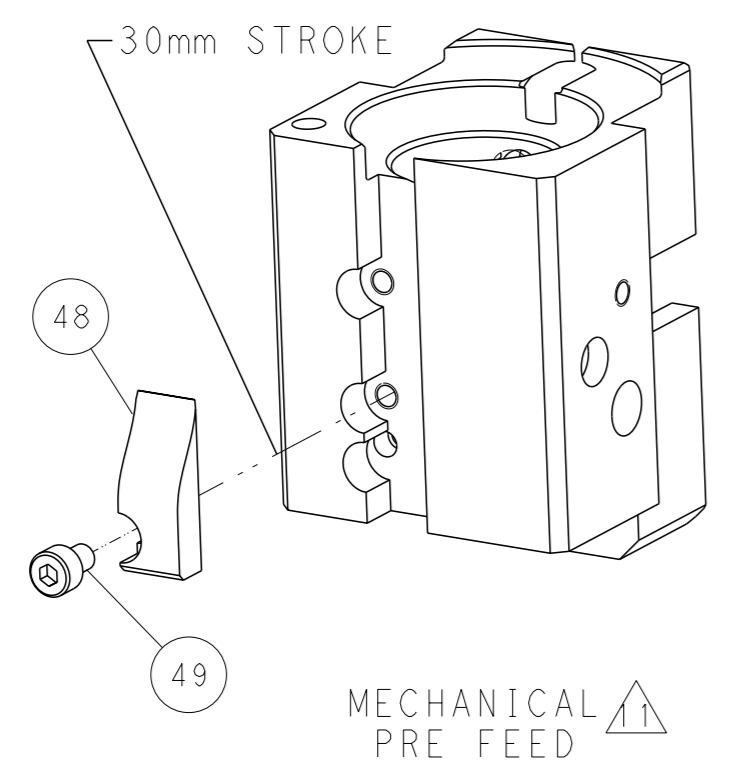
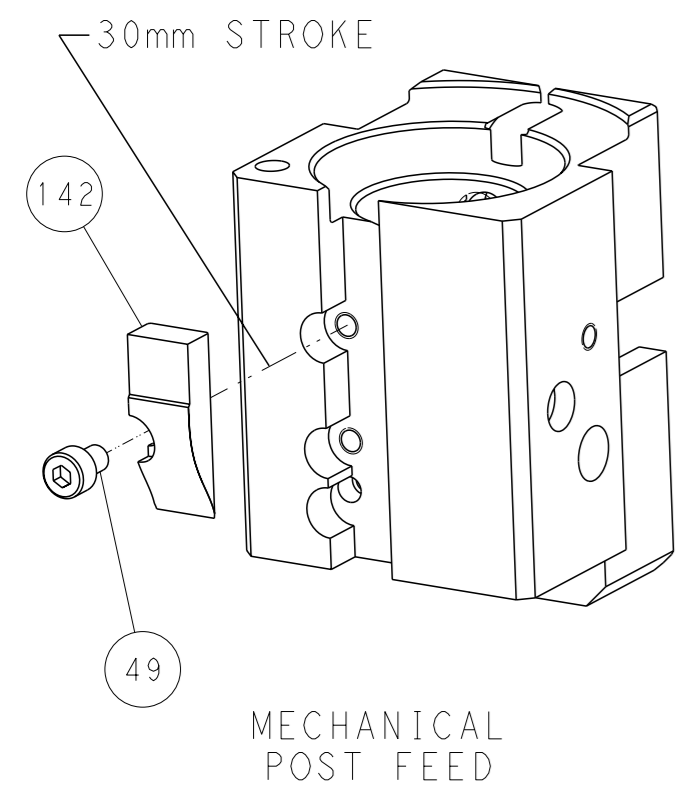
LOC	DIST	REVISIONS			
A	66	REV	DATE	OWN	APVD
		1	SEE SHEET 1		



FEED TYPE
MECHANICAL



CAM POSITIONS



PACIFIC VERSION
 Shown on sheets 3 of 4 & 4 of 4
 (Atlantic version shown on sheets 1 of 4 & 2 of 4)

DIMENSIONS: mm 		TOLERANCES UNLESS OTHERWISE SPECIFIED: 0 PLC ± 1 PLC ± 2 PLC ± 3 PLC ± 4 PLC ± ANGLES ± FINISH ±		OWN: K. HUANG 06SEP2016 CHK: L. ZHANG 06SEP2016 APVD: L. ZHANG 06SEP2016 PRODUCT SPEC APPLICATION SPEC WEIGHT: - Customer Accessible Production Drawing		NAME: Ocean End Feed Applicator SIZE: A1 CAGE CODE: 00779 DRAWING NO: C-2150710 SCALE: 1:1 SHEET: 4 of 4 REV: A		STE TE Connectivity Harrisburg, PA 17105-3608 RESTRICTED TO	
-----------------------	--	---	--	---	--	---	--	---	--