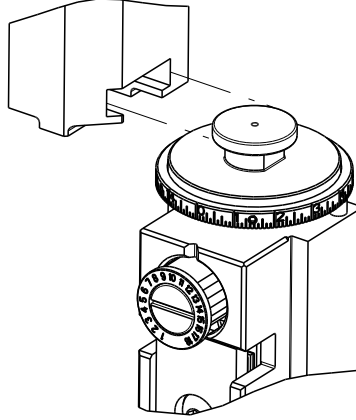

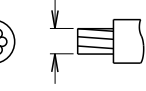



8		7	
THIS DRAWING IS UNPUBLISHED.		RELEASED FOR PUBLICATION	
COPYRIGHT 20		20	
BY TYCO ELECTRONICS CORPORATION. ALL RIGHTS RESERVED.			
ATLANTIC VERSION TERMINATOR INTERFACE ADAPTER	PART NUMBER	REVISION	DESCRIPTION
	2150687-2	A	FINE CRIMP HEIGHT ADJUST
	2150687-5	A	FINE CRIMP HEIGHT ADJUST
	2150687-6	A	NON-CRIMP HEIGHT ADJUST
	2150687-7	A	FINE CRIMP HEIGHT ADJUST
	7-2150687-7	A	CRIMP TOOLING KIT

APPLICATOR DATA		
CRIMP	SIZE	TYPE
WIRE	2.03 mm [.080]	F
INSUL	2.29 mm [.090]	F
APPL INSTRUCTIONS 408-10390		

TERMINAL DATA: TE TERMINAL		TE CRIMP SPECIFICATION	
TERMINAL NAME: .110 SER FASTIN-FASTON TAB			
WIRE STRIP LENGTH 3.87-4.63 mm [.152-.182 IN]		INSULATION DIAMETER RANGE Ø1.40-2.16 mm [.055-.085 IN]	
TERMINAL APPLICATION SPECIFICATION 114-2065		-	
TERMINAL APPLICATION SPECIFICATION		-	
TERMINALS APPLIED			
TE TERMINAL	TE TERMINAL	TE TERMINAL	TE TERMINAL
160174-1	160174-2		

WIRE SIZE		CRIMP HEIGHT mm [INCH]		CRIMP HEIGHT REFERENCE SETTING ⁹
0.50mm2		1.19+/-0.05 [.047+/- .002]		6.8
0.37mm2		1.14+/-0.05 [.045+/- .002]		7.3
0.32mm2		1.12+/-0.05 [.044+/- .002]		7.5
0.25mm2		1.09+/-0.05 [.043+/- .002]		7.8



- ¹ RECOMMENDED SPARE PARTS
- ² GREASE BEARING SURFACES LIGHTLY
3. LUBRICATE DAILY PER THE APPLICATOR INSTRUCTION SHEET SUPPLIED WITH THE APPLICATOR.
- ⁴ APPLICATOR SPECIFIC DATA TO BE ENTERED INTO BLANK MEMORY CHIP AT ASSEMBLY. SEE BELOW FOR PART NUMBER:
PNEUMATIC FEED WITH "SMART APPLICATOR" CONVERSION: 8-2150687-4
SERVO FEED WITH "FINE CRIMP HEIGHT ADJUST": 8-2150687-5
SERVO FEED WITH "NON-CRIMP HEIGHT ADJUST": 8-2150687-6
5. ADJUSTMENT OF THE STRIPPER MAY BE REQUIRED WHEN MOVING THE APPLICATOR BETWEEN BENCH AND LEADMAKER APPLICATIONS.
- ⁶ APPLY PART NUMBER 1-23419-5 LOCTITE TO THREADS OF ITEMS 62 & 180.
APPLY PART NUMBER 2-23419-6 LOCTITE TO THREADS OF ITEM 242.
FOR -6 ONLY APPLY PART NUMBER 1-23419-5 LOCTITE TO THREADS OF ITEMS 37 & 180.
- ⁸ GREASE THREADS, GROOVE AND O-RING ON ITEMS 35 & 252.
- ⁸ MAGNET, ITEM 166 MUST BE ORIENTED CORRECTLY IN ORDER TO PROPERLY ACTUATE THE COUNTER.
- ⁹ CRIMP HEIGHT REFERENCE SETTING WAS THE SETTING USED WHEN THE APPLICATOR WAS QUALIFIED AT THE FACTORY. ADJUSTMENT MAY BE NECESSARY WHEN RUNNING APPLICATOR IN THE FIELD.
- ¹⁰ TERMINAL PITCH NOT COMPATIBLE WITH MECHANICAL FEED.
- ¹¹ WHEN ASSEMBLING -6 NON-CRIMP HEIGHT ADJUST APPLICATOR USE SHIM PACK 2119957-2 TO ALIGN APPLICATOR'S MAXIMUM WIRE CRIMP HEIGHT AT NORMAL TERMINATOR SHUT HEIGHT

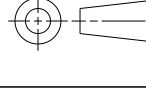
*WARNING
ON INSTALLATION, SET WIRE DISC, ITEM 40 TO LARGEST WIRE SIZE SETTING. USE OF SETTINGS BELOW MINIMUM REQUIRED CRIMP HEIGHT SETTING WILL CAUSE DAMAGE TO CRIMP TOOLING.

-	1	1	1	1	1803203-1	BLOCK, FRONT DEPRESSOR	261
-	-	1	-	-	2119957-2	APPLICATOR SHIM PACK	260
-	1	-	1	1	8-21084-0	O-RING, .676 ID, .070 DIA. MAT.	252
-	-	-	-	1	2119640-1	PUSH ROD, AIR FEED	250
-	-	-	-	1	2079988-1	BUSHING, LCH5-12, MISUMI	249
-	-	-	-	1	2119641-1	FEED CAM, AIR FEED	248
-	1	-	1	1	2119798-1	DETENT PIN	247
-	1	-	1	1	1-22279-3	SPRING, COMPRESSION	246
-	-	1	-	-	2119759-1	RAM, AMP STYLE, END FEED, NON-ADJUST	245
-77	-7	-6	-5	-2	PART NO	DESCRIPTION	ITEM NO

ATLANTIC VERSION
Shown on sheets 1 of 4 & 2 of 4
(Pacific version shown on sheets 3 of 4 & 4 of 4)

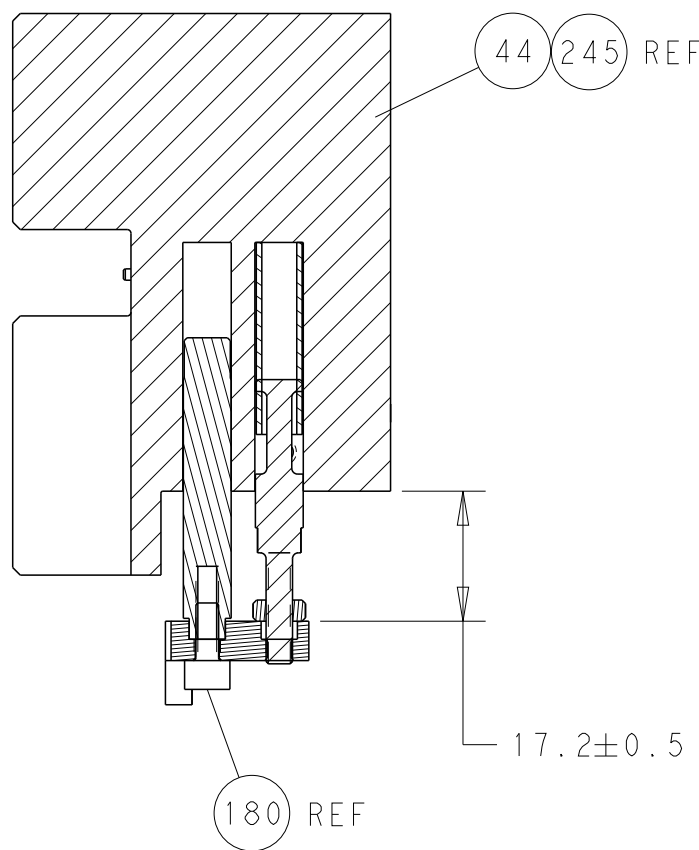
SET UP GAUGE 2119599-2	LOC A	DIST 66	REVISIONS				
			P	LTR	DESCRIPTION	DATE	DWN
				A	RELEASED	25JUL2016	RK
							CT

-	1	1	1	1	2119082-4	CAM, SNAIL, INSULATION ADJUSTMENT	244
-	1	1	1	1	2079764-1	WASHER, WAVE SPRING, CREST-TO-CREST	243
-	1	1	1	1	2119083-1	RETAINER, INSULATION DIAL	242
-	-	2	2	-	2168400-7	SHCS, LOW HEAD, RoHS, M5 X 10	240
-	-	-	-	1	2063440-2	AIR FEED MODULE	238
-	-	1	1	-	2119740-2	TAG, IDENTIFICATION	213
-	-	REF	REF	-	1901697-1	FEED FINGER ASSEMBLY, EF	183
-	1	1	1	1	4-1752354-1	STANDOFF, HOLD-DOWN	180
-	1	1	1	1	6-993111-6	PIN, SLOTTED SPRING 3.0 X 14.0	177
-	1	1	1	1	8-22280-7	SPRING, COMPRESSION	176
-	1	1	1	1	1752353-2	GUIDE PIN, HOLDDOWN	175
-	1	1	1	1	1901680-2	GUIDE PIN, HOLDDOWN	174
-	-	-	-	2	21045-3	RING, RETAIN, EXTERN, 3/16 CRESCENT	172
-	1	1	1	1	994969-1	MAGNET, RARE EARTH HIGH ENERGY	166
-	REF	REF	REF	REF	994970-2	COUNTER, MAGNETIC	164
-	-	-	-	1	240638-1	SPRING, FEED FINGER	163
-	-	-	-	1	3-23627-7	PIN, RETAIN, GRVD, 3/16 X .854	137
-	-	REF	REF	-	SEE NOTE 4	MEMORY CHIP, PROGRAMMED	135
-	-	1	1	-	1633743-1	SERVO FEED LATCH ASM	133
-	1	1	1	1	455888-3	SPACER, CRIMPER	120
-	1	1	1	1	2119955-2	ASSY, LUBRICATOR, END FEED	84
-	1	1	1	1	455888-7	SPACER, CRIMPER	82
-	1	1	1	1	2119791-5	DEPRESSOR, WIRE	73
-	1	1	1	1	2119956-2	DOCUMENTATION PACKAGE	71
-	2	2	2	2	2-18032-2	SCR, SET, FLT POINT M3 X 10.0	70
-	1	1	1	1	2119943-1	WASHER, SPACER	69
-	1	-	-	1	2119740-1	TAG, IDENTIFICATION	67
-	2	2	2	2	2168078-1	SCREW, DRIVE, RH, RoHS, 2 x .188	66
-	1	1	1	1	1901681-1	HOLDDOWN, TERMINAL	65
-	2	2	2	2	2168400-5	SHCS, LOW HEAD, RoHS, M4 X 20	64
-	1	-	1	1	2119793-1	LIMITER, ADJUSTMENT BOLT	63
-	3	-	3	3	992763-5	SCR, SET, SOC, CONE POINT, M3 x 4.0	62
-	1	1	1	1	2079383-4	SCR, BHSC, RoHS (M4 X 8)	60
-	3	3	3	3	2168400-4	SHCS, LOW HEAD, RoHS, M4 X 8	57
-	2	2	2	2	2168083-8	SCR, SKT HD CAP, RoHS, M4 X 16	56
-	2	2	2	2	5018030-2	NUT, HEX, REG, RoHS, M4	55
-	2	2	2	2	5018030-1	NUT, HEX, REG, RoHS, M3	54
-	2	2	2	2	986965-8	NUT, LOCK, HEX, TORQUE (M4)	53
-	1	1	1	1	1-5018030-0	NUT, HEX, REG, RoHS, M3.5	52
-	-	-	-	1	2119792-2	PAWL, EF, AIR	51
-	-	-	-	1	18023-9	SCR, SKT HD CAP M4 X 6.0	49
-	1	1	1	1	2119655-5	APPLICATOR BASIC ASSEMBLY, EF	46
-	1	-	1	1	2119369-1	RAM, AMP STYLE, END FEED	44
-	1	1	1	1	2079383-7	SCR, BHSC, RoHS (M8 X 25)	41
-	1	-	1	1	2119645-1	DISC, NUMBERED FA WIRE ADJUSTMENT	40
-	1	-	1	1	2119957-1	APPLICATOR SHIM PACK	39
-	1	1	1	1	2119644-1	RAM WASHER, PRECISION	38
-	1	1	1	1	2119085-1	FA HEAD, ATLANTIC STYLE	37
-	1	-	1	1	2119092-1	BOLT, ADJUSTMENT	35
-	7	7	7	7	1-18028-2	WASHER, FLAT, REG M4	33
-	2	2	2	2	2168083-9	SCR, SKT HD CAP, RoHS, M4 X 20	31
-	2	2	2	2	1-2168083-0	SCR, SKT HD CAP, RoHS, M4 X 10	29
-	1	1	1	1	240639-1	STRIPPER (MACHINING)	27
-	2	2	2	2	1320906-1	STUD, THREADED	25
-	1	1	1	1	1-1752371-8	PLATE, STRIP GUIDE	24
-	1	1	1	1	240825-1	PLATE, STRIP HOLD DOWN	23
-	2	2	2	2	2-22281-3	SPRING, COMPRESSION	22
-	1	1	1	1	1752373-4	DRAG	20
-	2	2	2	2	1-1901259-0	GUIDE, LOWER STRIP	18
-	4	4	4	4	1-2079383-1	SCR, BHSC, RoHS (M6 X 12)	17
-	1	1	1	1	3-240641-2	SPACER	16
-	1	1	1	1	1752360-1	SPACER, HOLD-DOWN	13
-	1	1	1	1	240644-9	PLATE, REAR SHEAR	11
-	-	-	-	-	-	-	10
-	1	1	1	1	6-690482-0	PLATE, FRONT SHEAR	9
-	1	1	1	1	5-1803059-3	ANVIL, COMBINATION, END FEED	8
-	1	1	1	1	2217206-7	BLADE, SLUG	7
-	-	-	-	-	-	-	6
-	1	1	1	1	3-240641-2	SPACER	5
-	1	1	1	1	238011-9	BLOCK, CRIMPER SPACER	4
-	1	1	1	1	7-2119582-3	CRIMPER, INSULATION F PREMIUM	3
-	1	1	1	1	455888-6	SPACER, CRIMPER	2
-	1	1	1	1	1-456405-6	CRIMPER, WIRE PREMIUM	1
-77	-7	-6	-5	-2	PART NO	DESCRIPTION	ITEM NO

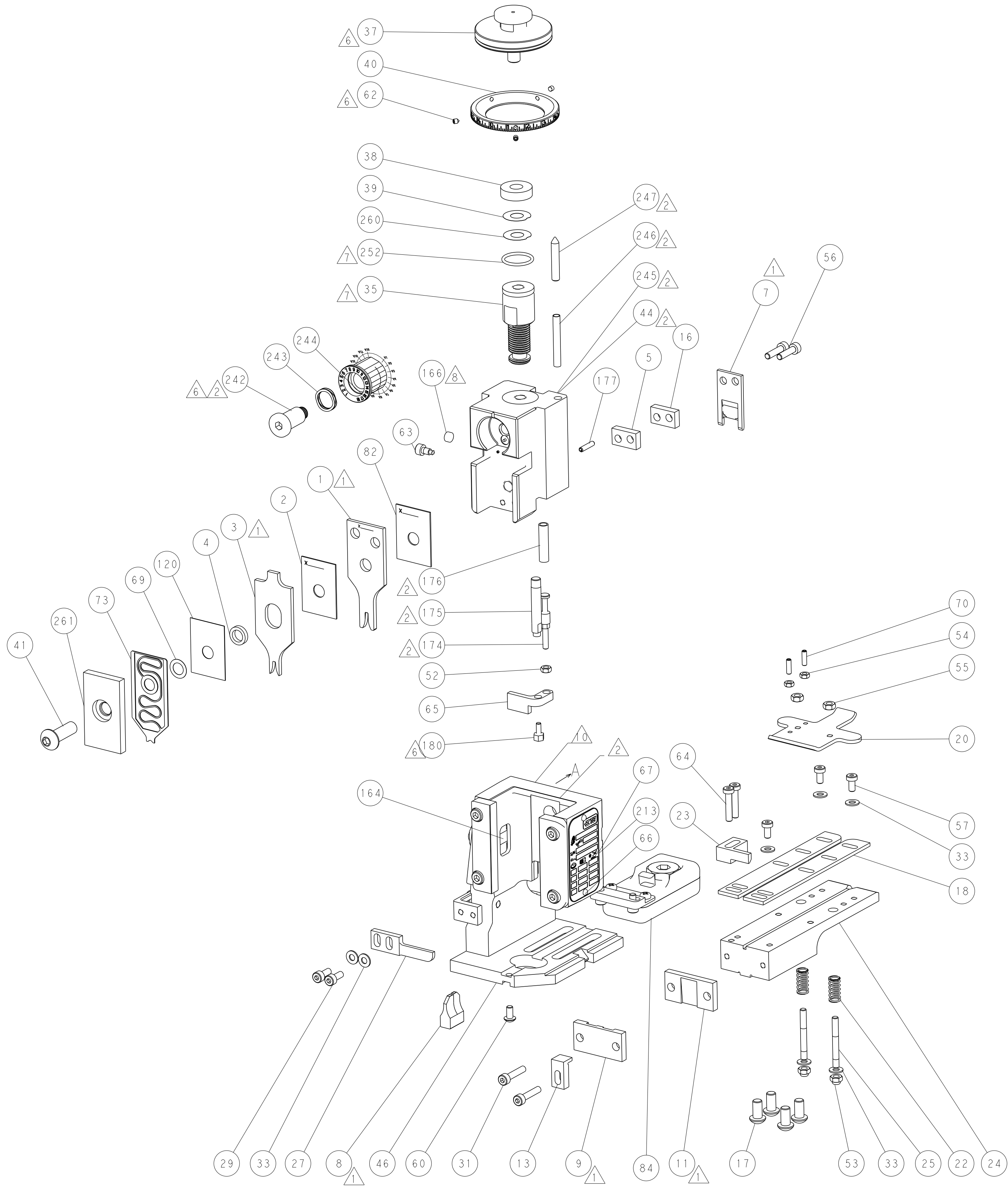
THIS DRAWING IS UNPUBLISHED. IT IS SUBJECT TO CHANGE WITHOUT NOTICE. THE USER SHALL BE RESPONSIBLE FOR VERIFYING THE DIMENSIONS AND TOLERANCES OF THE PARTS BEFORE USE. THE USER SHALL BE RESPONSIBLE FOR THE LATEST EDITION.		DWN J. HOU 27JUN2016	TE Connectivity Harrisburg, PA 17105-3608	
DIMENSIONS: mm		CHK L. ZHANG 27JUN2016	NAME Ocean End Feed Applicator	
		TOLERANCES UNLESS OTHERWISE SPECIFIED: 0 PLC ± 1 PLC ± 2 PLC ± 3 PLC ± 4 PLC ± ANGLES ±	PRODUCT SPEC APPLICATION SPEC	
MATERIAL -		FINISH -	SIZE A1	
		WEIGHT -	CAGE CODE 00779	
			DRAWING NO C=2150687	
			RESTRICTED TO -	
		Customer Accessible Production Drawing		SCALE 1:1
		SHEET 1		OF 4
		REV A		

SHEETS 3 & 4 ARE NOT REQUIRED FOR ATLANTIC VERSION

LOC		DIST		REVISIONS					
A		66		P	LTR	DESCRIPTION	DATE	DWN	APVD
					-	SEE SHEET 1	-	-	-

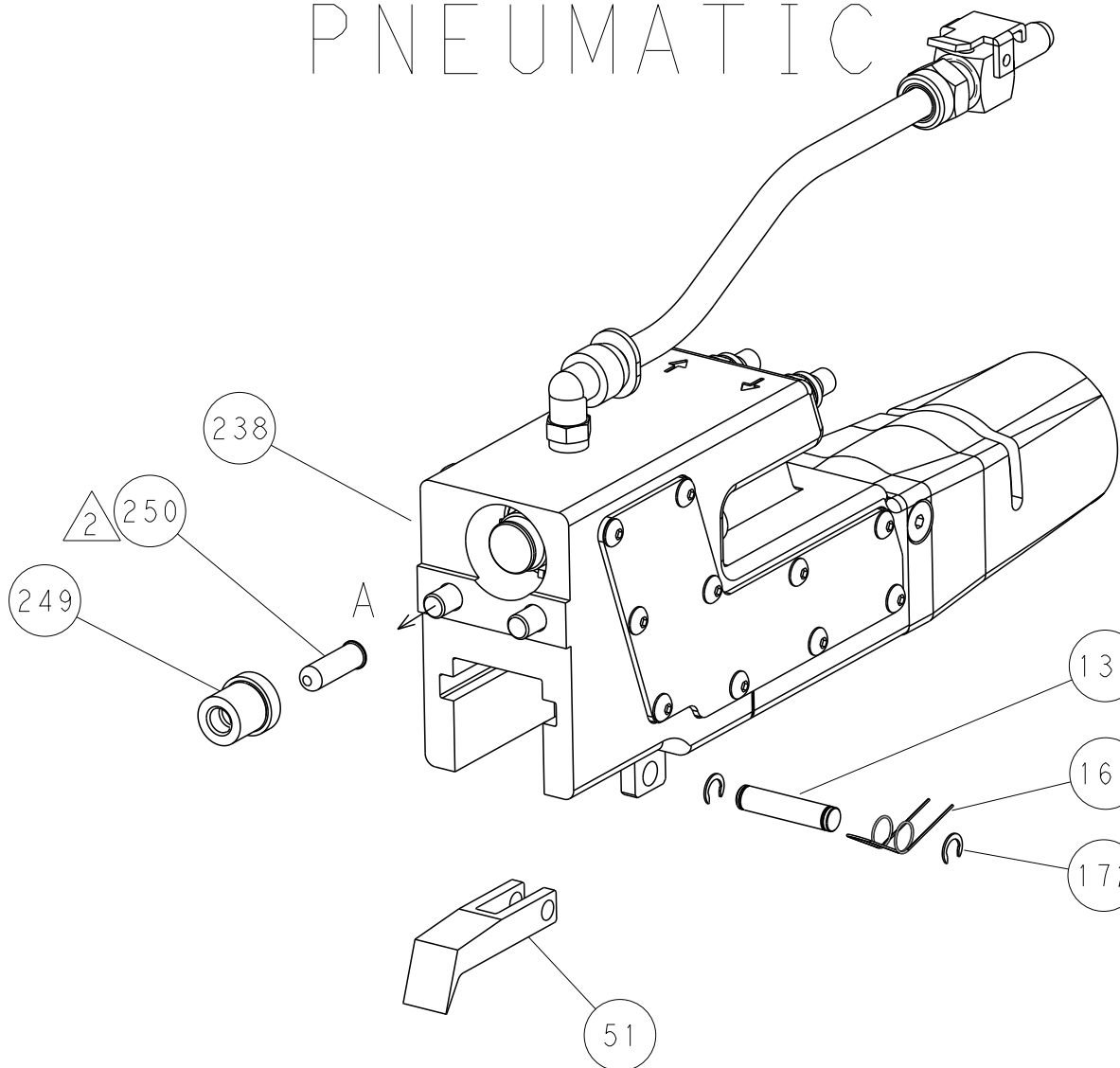


HOLDDOWN SET-UP

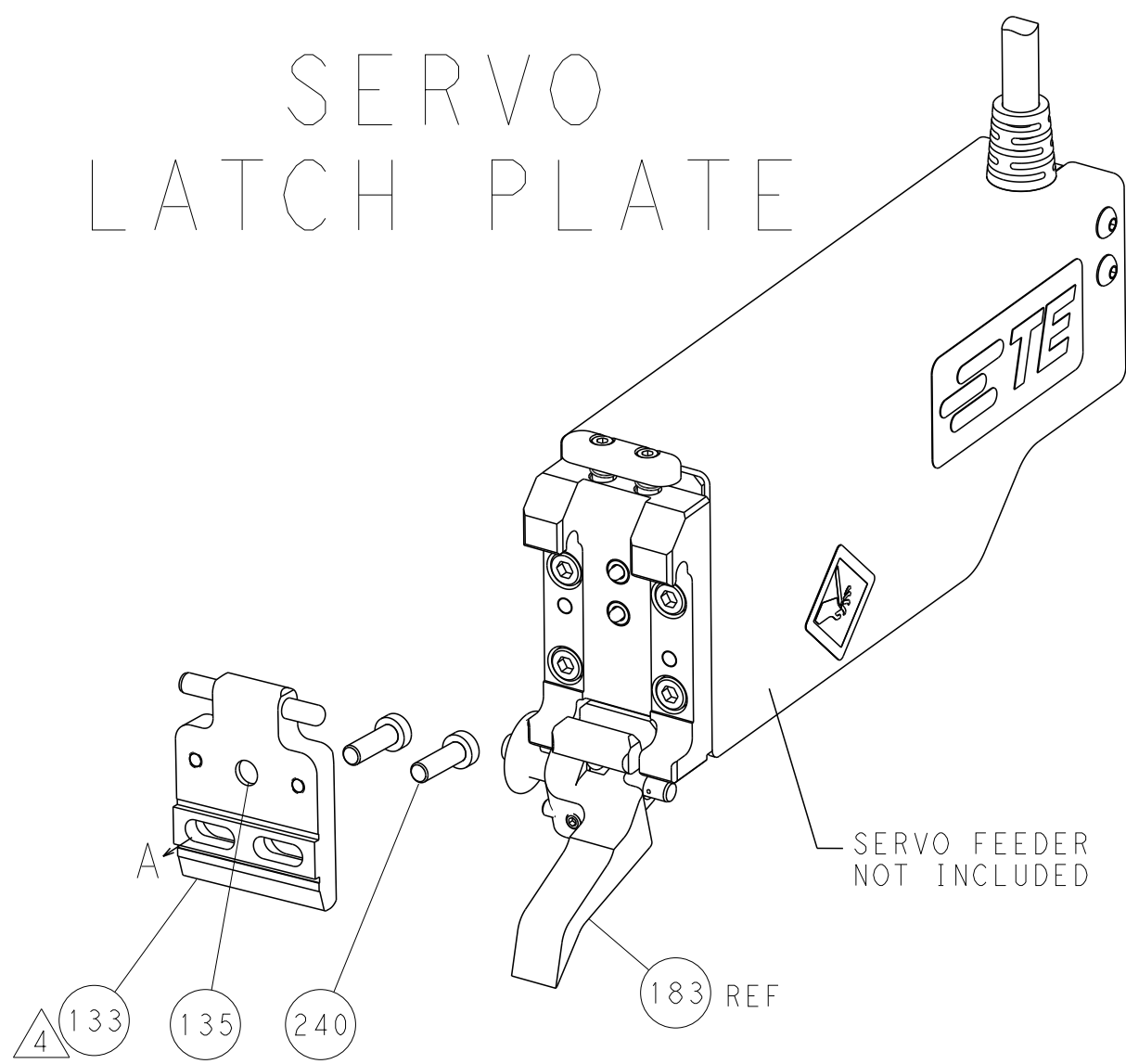


FEED TYPE

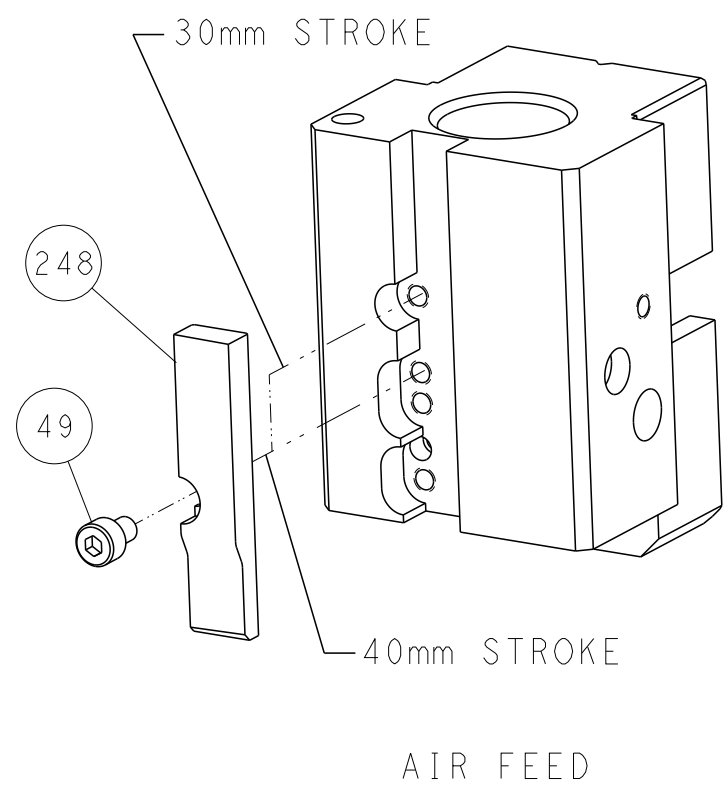
PNEUMATIC



SERVO
LATCH PLATE



CAM POSITION



AIR FEED

ATLANTIC VERSION
Shown on sheets 1 of 4 & 2 of 4
(Pacific version shown on sheets 3 of 4 & 4 of 4)

THIS DRAWING IS UNPUBLISHED. IT IS SUBJECT TO CHANGE WITHOUT NOTICE. THE USER SHALL BE RESPONSIBLE FOR THE LATEST VERSION.		DWN J. HOU 27JUN2016	TE Connectivity Harrisburg, PA 17105-3608	
DIMENSIONS: mm		CHK L. ZHANG 27JUN2016	NAME Ocean End Feed Applicator	
TOLERANCES UNLESS OTHERWISE SPECIFIED: 0 PLC ± 1 PLC ± 2 PLC ± 3 PLC ± 4 PLC ± ANGLES ± FINISH		APVD L. ZHANG 27JUN2016	SIZE CAGE CODE DRAWING NO 00779 C=2150687	
MATERIAL		PRODUCT SPEC	RESTRICTED TO	
		APPLICATION SPEC	Customer Accessible Production Drawing	
		WEIGHT	SCALE 1:1	
			SHEET 2 OF 4	
			REV A	

SHEETS 3 & 4 ARE NOT REQUIRED FOR ATLANTIC VERSION


8

7

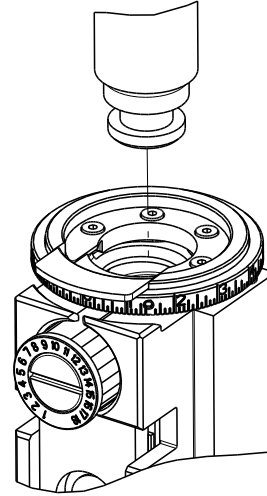
THIS DRAWING IS UNPUBLISHED.


RELEASED FOR PUBLICATION

20

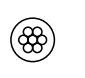

 COPYRIGHT 20

BY TYCO ELECTRONICS CORPORATION. ALL RIGHTS RESERVED.

PACIFIC VERSION TERMINATOR INTERFACE ADAPTER	PART NUMBER	REVISION	DESCRIPTION
	2-2150687-2	A	FINE CRIMP HEIGHT ADJUST
	2-2150687-5	A	FINE CRIMP HEIGHT ADJUST
	2-2150687-7	A	FINE CRIMP HEIGHT ADJUST
	7-2150687-7	A	CRIMP TOOLING KIT

APPLICATOR DATA		
CRIMP	SIZE	TYPE
WIRE	2.03 mm [.080]	F
INSUL	2.29 mm [.090]	F
APPL INSTRUCTIONS 408-10390		

TERMINAL DATA: TE TERMINAL		TE CRIMP SPECIFICATION	
TERMINAL NAME: .110 SER FASTIN-FASTON TAB			
WIRE STRIP LENGTH 3.87-4.63 mm [.152-.182 IN]		INSULATION DIAMETER RANGE Ø1.40-2.16 mm [.055-.085 IN]	
TERMINAL APPLICATION SPECIFICATION		114-2065	
TERMINALS APPLIED		10	
TE TERMINAL	TE TERMINAL	TE TERMINAL	TE TERMINAL
160174-1	160174-2		

WIRE SIZE		CRIMP HEIGHT mm [INCH]		CRIMP HEIGHT REFERENCE SETTING ⁹
0.50mm2		1.19+/-0.05 [.047+/- .002]		6.8
0.37mm2		1.14+/-0.05 [.045+/- .002]		7.3
0.32mm2		1.12+/-0.05 [.044+/- .002]		7.5
0.25mm2		1.09+/-0.05 [.043+/- .002]		7.8



- ¹ RECOMMENDED SPARE PARTS
- ² GREASE BEARING SURFACES LIGHTLY
3. LUBRICATE DAILY PER THE APPLICATOR INSTRUCTION SHEET SUPPLIED WITH THE APPLICATOR.
- ⁴ APPLICATOR SPECIFIC DATA TO BE ENTERED INTO BLANK MEMORY CHIP AT ASSEMBLY. SEE BELOW FOR PART NUMBER:
PNEUMATIC FEED WITH "SMART APPLICATOR" CONVERSION: 8-2150687-4
SERVO FEED WITH "FINE CRIMP HEIGHT ADJUST": 8-2150687-5
5. ADJUSTMENT OF THE STRIPPER MAY BE REQUIRED WHEN MOVING THE APPLICATOR BETWEEN BENCH AND LEADMAKER APPLICATIONS.
- ⁶ APPLY PART NUMBER 1-23419-5 LOCTITE TO THREADS OF ITEMS 62 & 180.
APPLY PART NUMBER 2-23419-6 LOCTITE TO THREADS OF ITEM 242.
- ⁷ GREASE THREADS, GROOVE AND O-RING ON ITEMS 139 & 153.
- ⁸ MAGNET, ITEM 166 MUST BE ORIENTED CORRECTLY IN ORDER TO PROPERLY ACTUATE THE COUNTER.
- ⁹ CRIMP HEIGHT REFERENCE SETTING WAS THE SETTING USED WHEN THE APPLICATOR WAS QUALIFIED AT THE FACTORY. ADJUSTMENT MAY BE NECESSARY WHEN RUNNING APPLICATOR IN THE FIELD.
- ¹⁰ TERMINAL PITCH NOT COMPATIBLE WITH MECHANICAL FEED.
- ¹¹ THE RECOMMENDED SET-UP FOR END FEED APPLICATORS IS POST-FEED WITH ITEM 2119653-1. THE APPLICATOR CAN BE CONFIGURED FOR PRE-FEED WITH ITEM 2119652-1 BUT MAY ENCOUNTER PROBLEMS WITH SOME APPLICATIONS. FEED ISSUES OR TERMINAL JAMMING MAY OCCUR IN THE PRE-FEED CONFIGURATION.

*WARNING
ON INSTALLATION, SET WIRE DISC, ITEM 40 TO LARGEST WIRE SIZE SETTING. USE OF SETTINGS BELOW MINIMUM REQUIRED CRIMP HEIGHT SETTING WILL CAUSE DAMAGE TO CRIMP TOOLING.

-	1	1	1	1803203-1	BLOCK, FRONT DEPRESSOR	261
-	1	1	1	2119782-1	FINE ADJUST HEAD ASM, PACIFIC STYLE	251
-	-	-	1	2119640-1	PUSH ROD, AIR FEED	250
-	-	-	1	2079988-1	BUSHING, LCH5-12, MISUMI	249
-	1	1	1	1-22279-3	SPRING, COMPRESSION	246
-	1	1	1	2119082-4	CAM, SNAIL, INSULATION ADJUSTMENT	244
-	1	1	1	2079764-1	WASHER, WAVE SPRING, CREST-TO-CREST	243
-77-27-25-22				PART NO	DESCRIPTION	ITEM NO

PACIFIC VERSION
Shown on sheets 3 of 4 & 4 of 4
(Atlantic version shown on sheets 1 of 4 & 2 of 4)

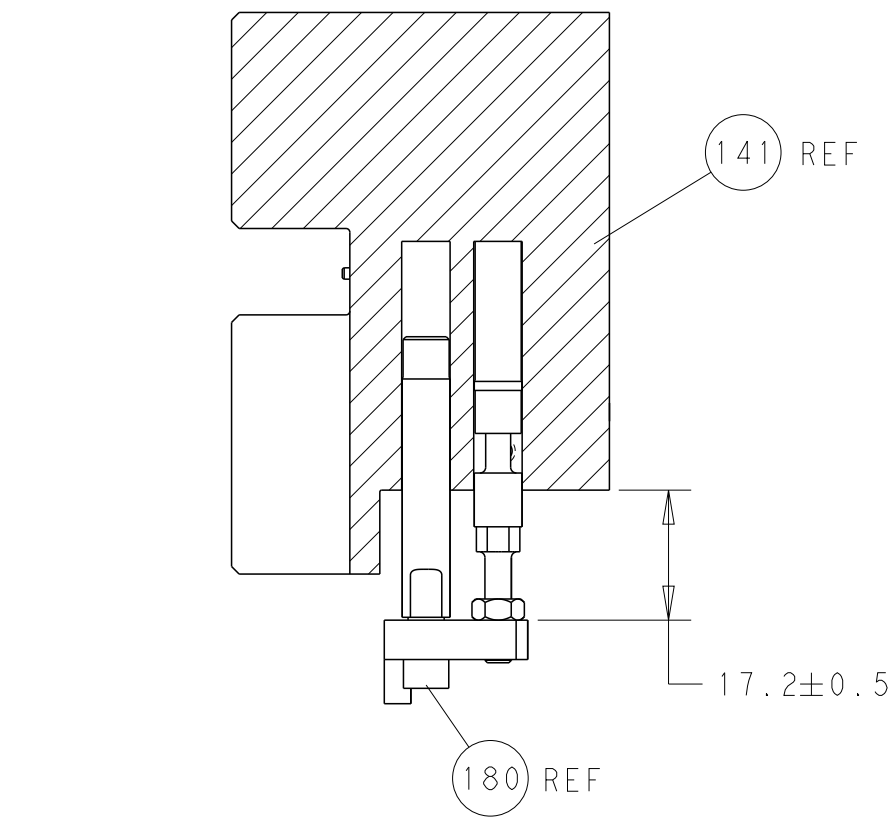
SET UP GAUGE 2119599-2	LOC A	DIST 66	REVISIONS				
			P	LTR	DESCRIPTION	DATE	OWN
			-	-	SEE SHEET 1	-	-

⁶	-	1	1	1	2119083-1	RETAINER, INSULATION DIAL	242
	-	-	2	-	2168400-7	SHCS, LOW HEAD, RoHS, M5 X 10	240
	-	-	-	1	2063440-2	AIR FEED MODULE	238
	-	-	1	-	2119740-2	TAG, IDENTIFICATION	213
	-	4	4	4	2079383-9	SCR, BHSC, RoHS (M6 X 20)	186
	-	-	REF	-	1901697-1	FEED FINGER ASSEMBLY, EF	183
⁶	-	1	1	1	4-1752354-1	STANDOFF, HOLD-DOWN	180
	-	1	1	1	6-993111-6	PIN, SLOTTED SPRING 3.0 X 14.0	177
	-	1	1	1	8-22280-7	SPRING, COMPRESSION	176
	-	1	1	1	1752353-2	GUIDE PIN, HOLDDOWN	175
	-	1	1	1	1901680-2	GUIDE PIN, HOLDDOWN	174
	-	-	-	2	21045-3	RING, RETAIN, EXTERN, 3/16 CRESCENT	172
	-	1	1	1	994969-1	MAGNET, RARE EARTH HIGH ENERGY	166
	-	REF	REF	REF	994970-2	COUNTER, MAGNETIC	164
	-	-	-	1	240638-1	SPRING, FEED FINGER	163
	-	1	1	1	8-21084-1	O-RING, .801 ID, .070 DIA. MAT.	153
	-	-	-	1	2119641-2	FEED CAM, AIR FEED	152
	-	1	1	1	2119798-2	DETENT PIN	145
	-	1	1	1	2079383-8	SCR, BHSC, RoHS (M4 X 16)	144
	-	1	1	1	2119655-6	APPLICATOR BASIC ASSEMBLY, EF	141
	-	1	1	1	2119651-1	RAM, ASIAN STYLE, END FEED	140
	-	1	1	1	2119092-2	BOLT, ADJUSTMENT	139
	-	-	-	1	3-23627-7	PIN, RETAIN, GRVD, 3/16 X .854	137
	-	-	REF	-	SEE NOTE 4	MEMORY CHIP, PROGRAMMED	135
	-	-	1	-	1633743-1	SERVO FEED LATCH ASM	133
	-	1	1	1	455888-3	SPACER, CRIMPER	120
	-	1	1	1	2119955-2	ASSY, LUBRICATOR, END FEED	84
	-	1	1	1	455888-7	SPACER, CRIMPER	82
	-	1	1	1	2119791-5	DEPRESSOR, WIRE	73
	-	1	1	1	2119956-2	DOCUMENTATION PACKAGE	71
	-	2	2	2	2-18032-2	SCR, SET, FLT POINT M3 X 10.0	70
	-	1	1	1	2119943-1	WASHER, SPACER	69
	-	1	-	1	2119740-1	TAG, IDENTIFICATION	67
	-	2	2	2	2168078-1	SCREW, DRIVE, RH, RoHS, 2 x .188	66
	-	1	1	1	1901681-1	HOLDDOWN, TERMINAL	65
	-	2	2	2	2168400-5	SHCS, LOW HEAD, RoHS, M4 X 20	64
⁶	-	1	1	1	2119793-1	LIMITER, ADJUSTMENT BOLT	63
	-	3	3	3	992763-5	SCR, SET, SOC, CONE POINT, M3 x 4.0	62
	-	3	3	3	2168400-4	SHCS, LOW HEAD, RoHS, M4 X 8	57
	-	2	2	2	2168083-8	SCR, SKT HD CAP, RoHS, M4 X 16	56
	-	2	2	2	5018030-2	NUT, HEX, REG, RoHS, M4	55
	-	2	2	2	5018030-1	NUT, HEX, REG, RoHS, M3	54
	-	2	2	2	986965-8	NUT, LOCK, HEX, TORQUE (M4)	53
	-	1	1	1	1-5018030-0	NUT, HEX, REG, RoHS, M3.5	52
	-	-	-	1	2119792-2	PAWL, EF, AIR	51
	-	-	-	1	18023-9	SCR, SKT HD CAP M4 X 6.0	49
	-	1	1	1	2079383-7	SCR, BHSC, RoHS (M8 X 25)	41
	-	1	1	1	2119645-1	DISC, NUMBERED FA WIRE ADJUSTMENT	40
	-	1	1	1	2119957-1	APPLICATOR SHIM PACK	39
	-	1	1	1	2119644-1	RAM WASHER, PRECISION	38
	-	7	7	7	1-18028-2	WASHER, FLAT, REG M4	33
	-	2	2	2	2168083-9	SCR, SKT HD CAP, RoHS, M4 X 20	31
	-	2	2	2	1-2168083-0	SCR, SKT HD CAP, RoHS, M4 X 10	29
	-	1	1	1	240639-1	STRIPPER (MACHINING)	27
	-	2	2	2	1320906-1	STUD, THREADED	25
	-	1	1	1	1-1752371-8	PLATE, STRIP GUIDE	24
	-	1	1	1	240825-1	PLATE, STRIP HOLD DOWN	23
	-	2	2	2	2-22281-3	SPRING, COMPRESSION	22
	-	1	1	1	1752373-4	DRAG	20
	-	2	2	2	1-1901259-0	GUIDE, LOWER STRIP	18
	-	1	1	1	3-240641-2	SPACER	16
	-	1	1	1	1752360-1	SPACER, HOLD-DOWN	13
¹	-	1	1	1	240644-9	PLATE, REAR SHEAR	11
	-	-	-	-	-	-	10
¹	-	1	1	1	6-690482-0	PLATE, FRONT SHEAR	9
¹	1	1	1	1	5-1803059-3	ANVIL, COMBINATION, END FEED	8
¹	-	1	1	1	2217206-7	BLADE, SLUG	7
	-	-	-	-	-	-	6
	-	1	1	1	3-240641-2	SPACER	5
	-	1	1	1	238011-9	BLOCK, CRIMPER SPACER	4
¹	1	1	1	1	7-2119582-3	CRIMPER, INSULATION F PREMIUM	3
	-	1	1	1	455888-6	SPACER, CRIMPER	2
¹	1	1	1	1	1-456405-6	CRIMPER, WIRE PREMIUM	1
	-77-27-25-22				PART NO	DESCRIPTION	ITEM NO

THIS DRAWING IS UNPUBLISHED. IT IS SUBJECT TO CHANGE WITHOUT NOTICE. THE ORGANIZATION SHALL BE CONTACTED FOR THE LATEST EDITION.				DRAWN J. HOU 27JUN2016		TE Connectivity Harrisburg, PA 17105-3608			
DIMENSIONS: mm									

SHEETS 1 & 2 ARE NOT REQUIRED FOR PACIFIC VERSION

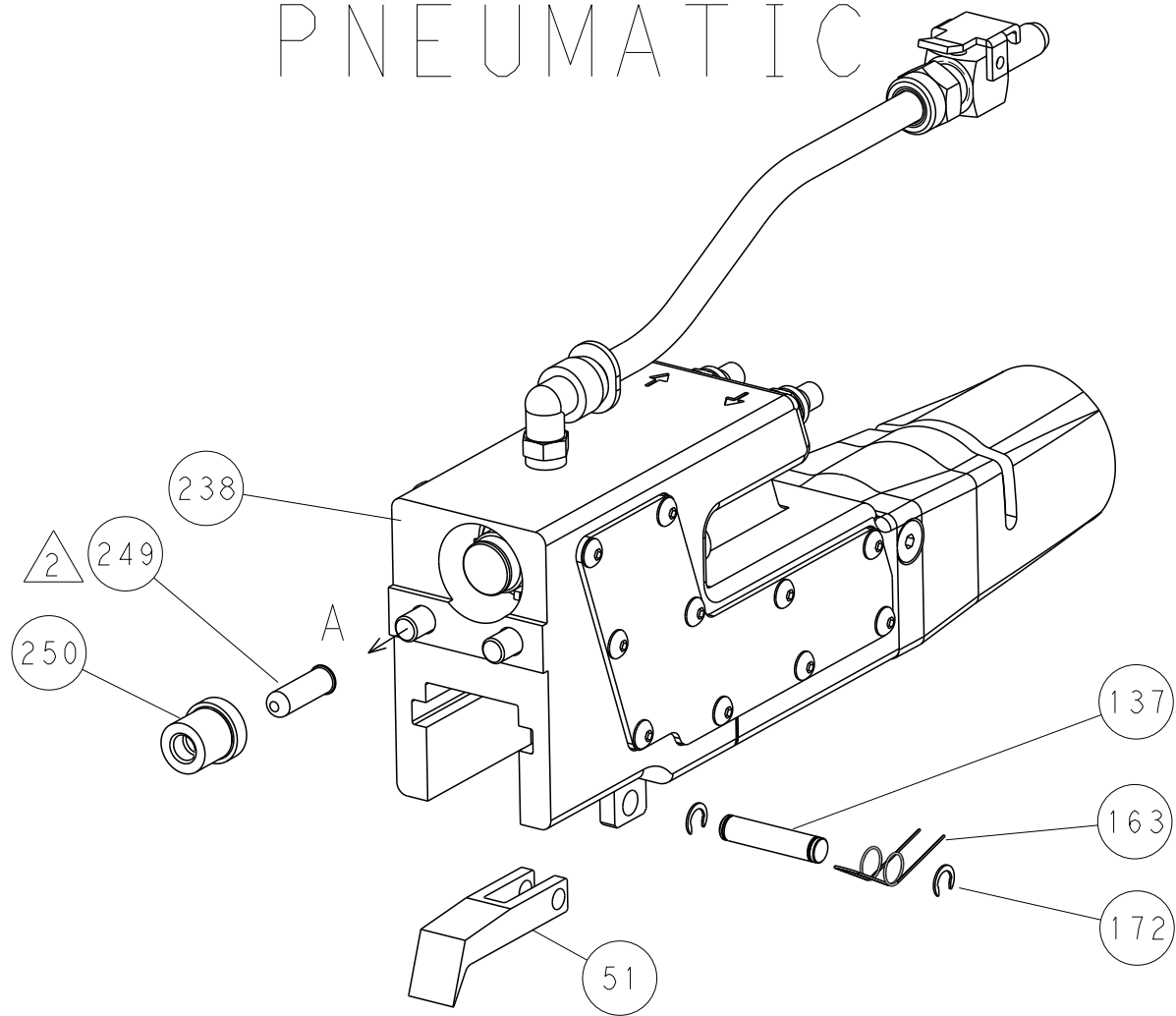
LOC		DIST		REVISONS				
A	66	P	LTR	DESCRIPTION	DATE	DWN	APVD	
		-		SEE SHEET 1	-	-	-	



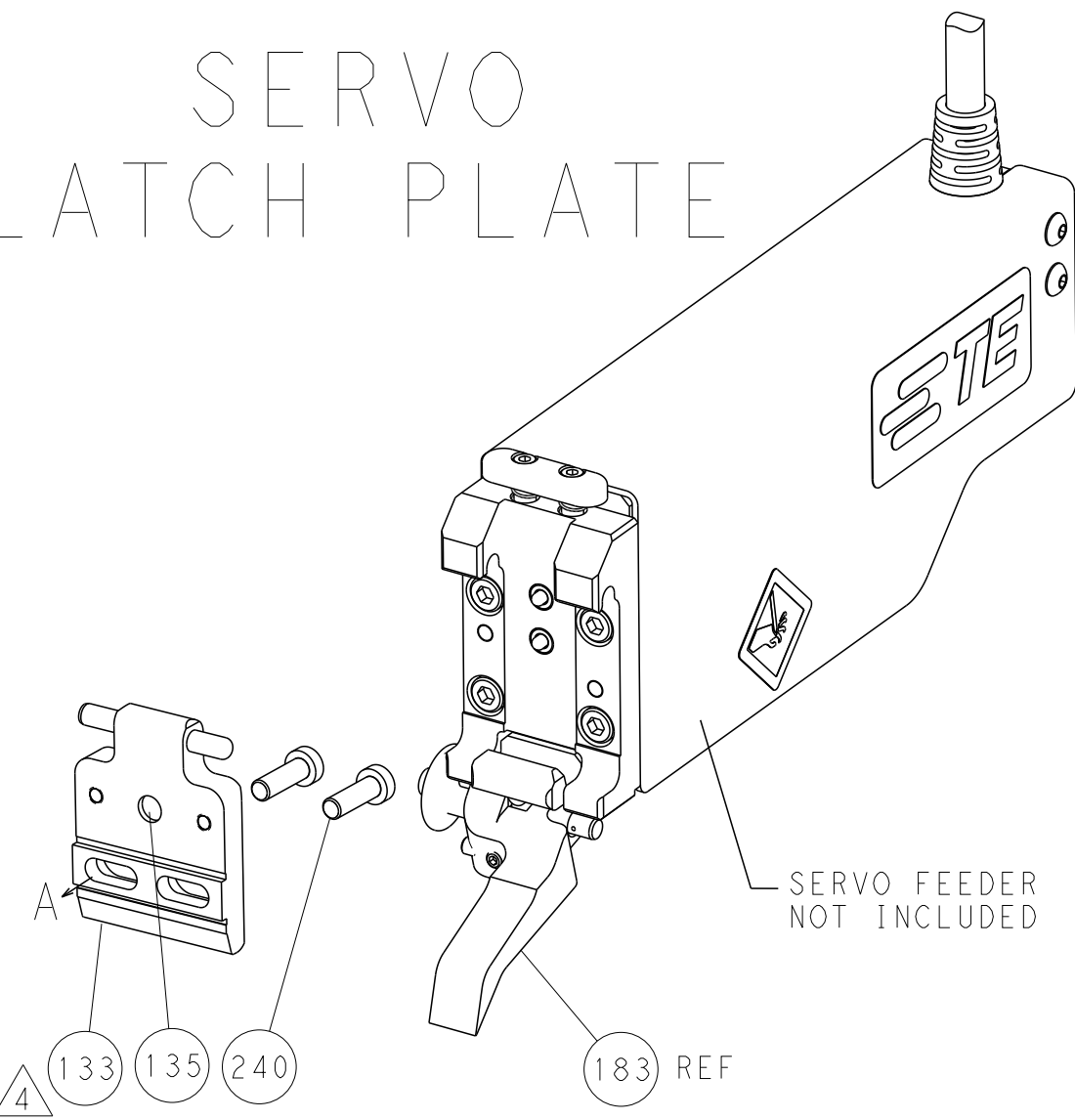
HOLDDOWN SET-UP

FEED TYPE

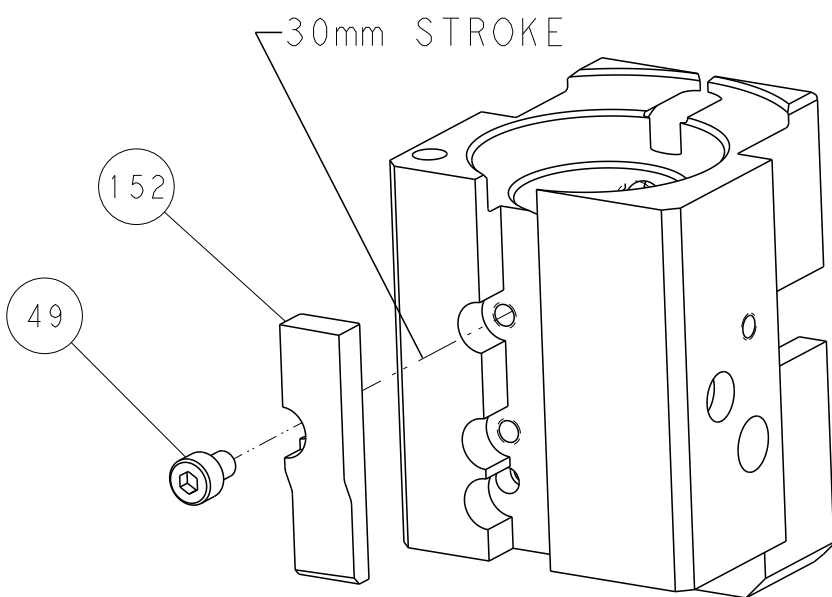
PNEUMATIC



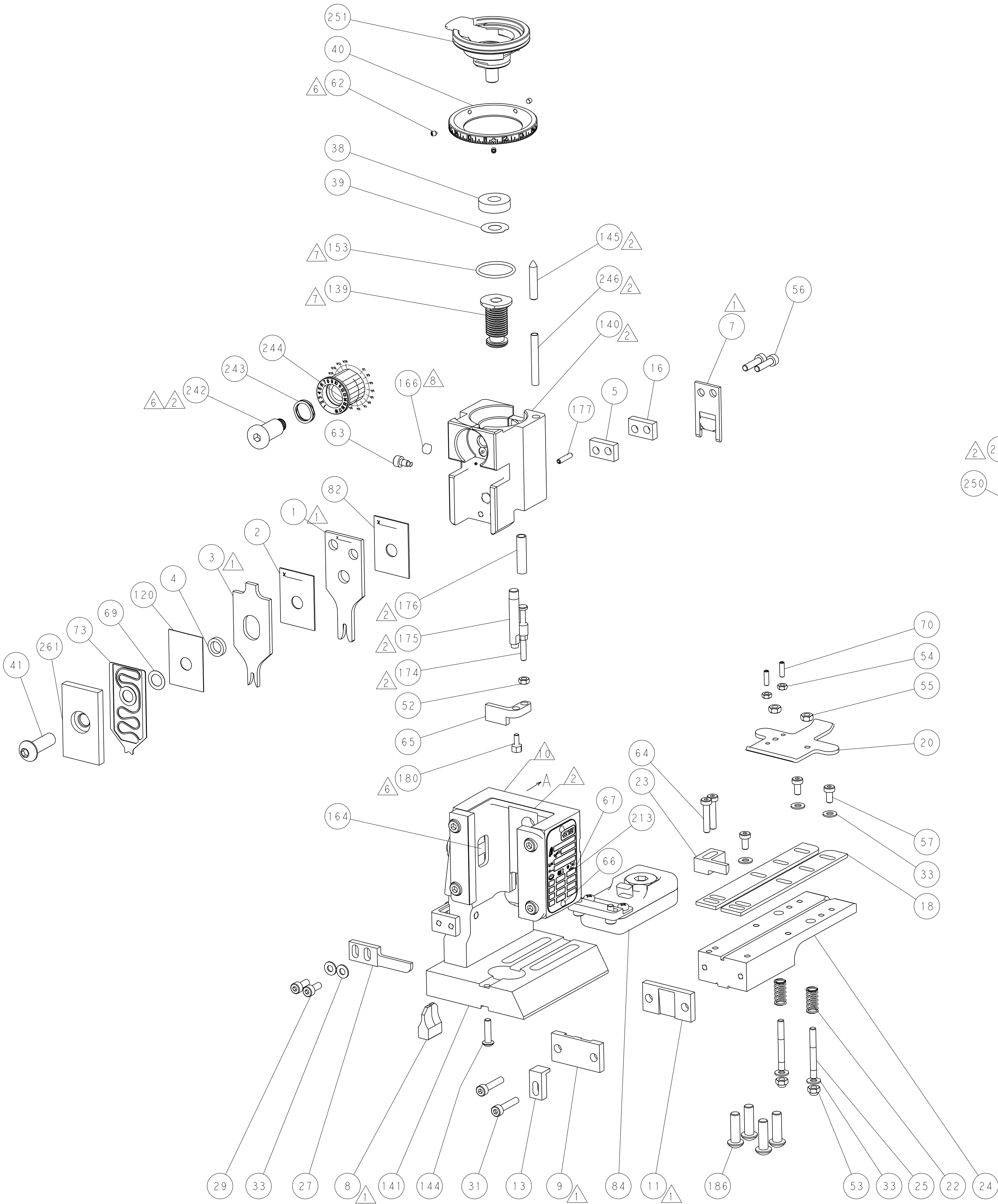
SERVO
LATCH PLATE



CAM POSITION



AIR FEED



PACIFIC VERSION
Shown on sheets 3 of 4 & 4 of 4
(Atlantic version shown on sheets 1 of 4 & 2 of 4)

THIS DRAWING IS UNPUBLISHED. IT IS SUBJECT TO CHANGE WITHOUT NOTICE. IT IS THE RESPONSIBILITY OF THE USER TO CONTACT THE ORGANIZATION FOR THE LATEST EDITION.				DWN	J. HOU	27JUN2016	STE Connectivity Harrisburg, PA 17105-3608	
				CHK	L. ZHANG	27JUN2016	NAME	
				APVD	L. ZHANG	27JUN2016	PRODUCT SPEC	
							APPLICATION SPEC	
							SIZE	
							CAGE CODE	
							DRAWING NO	
							RESTRICTED TO	
							Customer Accessible Production Drawing	
							SCALE	
							1:1	
							SHEET	
							4 OF 4	
							REV	
							A	

SHEETS 1 & 2 ARE NOT REQUIRED FOR PACIFIC VERSION