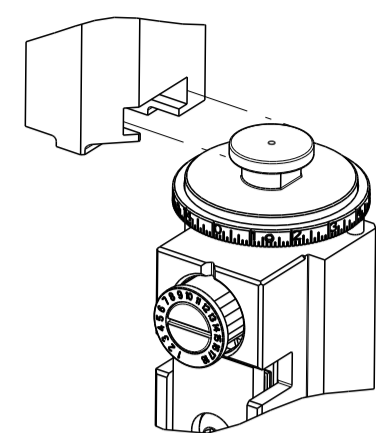


PART NUMBER	REVISION	DESCRIPTION	FEED TYPE
2150212-2	B	FINE CRIMP HEIGHT ADJUST	PNEUMATIC
7-2150212-2	B	PNEUMATIC AND CRIMP TOOLING KIT	PNEUMATIC
7-2150212-7	A	CRIMP TOOLING KIT	-

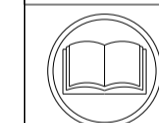
ATLANTIC VERSION TERMINATOR INTERFACE ADAPTER



APPLICATOR DATA		
CRIMP	SIZE	TYPE
WIRE	2.97 mm [.117]	F
INSUL	4.83 mm [.190]	Ø
APPL INSTRUCTIONS 408-35043		

TERMINAL DATA: YAZAKI TERMINAL YAZAKI CRIMP SPECIFICATION			
TERMINAL NAME: X TYPE TERMINAL M			
WIRE STRIP LENGTH		INSULATION DIAMETER RANGE	
5.00-6.00 mm [.197-.236 IN]		Ø2.00-2.90 mm [.079-.114 IN]	
TERMINAL APPLICATION SPECIFICATION		72-W108-082 Rev WA2036	-
TERMINALS APPLIED			
TE TERMINAL	YAZAKI TERMINAL	TE SEAL	YAZAKI SEAL
1949541-1	7114-2873	286808-1	7157-3570
1949541-2	7114-2873-02		

WIRE SIZE	CRIMP HEIGHT mm [INCH]	CRIMP HEIGHT REFERENCE SETTING
1.25mm ²	1.50+/-0.05 [.059+/-0.002]	5.6
0.85 or 0.75mm ²	1.35+/-0.05 [.053+/-0.002]	7.3
0.50mm ²	1.25+/-0.05 [.049+/-0.002]	8.6



- RECOMMENDED SPARE PARTS
- REFER TO SUPPLIED INSTRUCTION SHEET FOR CLEANING, LUBRICATION AND STORAGE OF APPLICATOR.
- APPLY PART NUMBER 1-23419-5 LOCTITE TO THREADS OF ITEM 180. APPLY PART NUMBER 2-23419-6 LOCTITE TO THREADS OF ITEM 242.
- CRIMP HEIGHT REFERENCE SETTING WAS THE SETTING USED WHEN THE APPLICATOR WAS QUALIFIED AT THE FACTORY. ADJUSTMENT MAY BE NECESSARY WHEN RUNNING APPLICATOR IN THE FIELD.
- TERMINAL PITCH NOT COMPATIBLE WITH MECHANICAL FEED.
- APPLY TORQ-SEAL IN ALLEN SOCKET TO FILL HOLE AFTER FLAT HD HAS BEEN ADJUSTED TO CORRECT HEIGHT AT QUALIFICATION. APPLY #1-23419-5 LOC-TITE TO THREADS.
- 7. UNLESS SPECIFIED OTHERWISE TORQUE VALUES SHALL BE USED PER DOCUMENT, 101-35000.

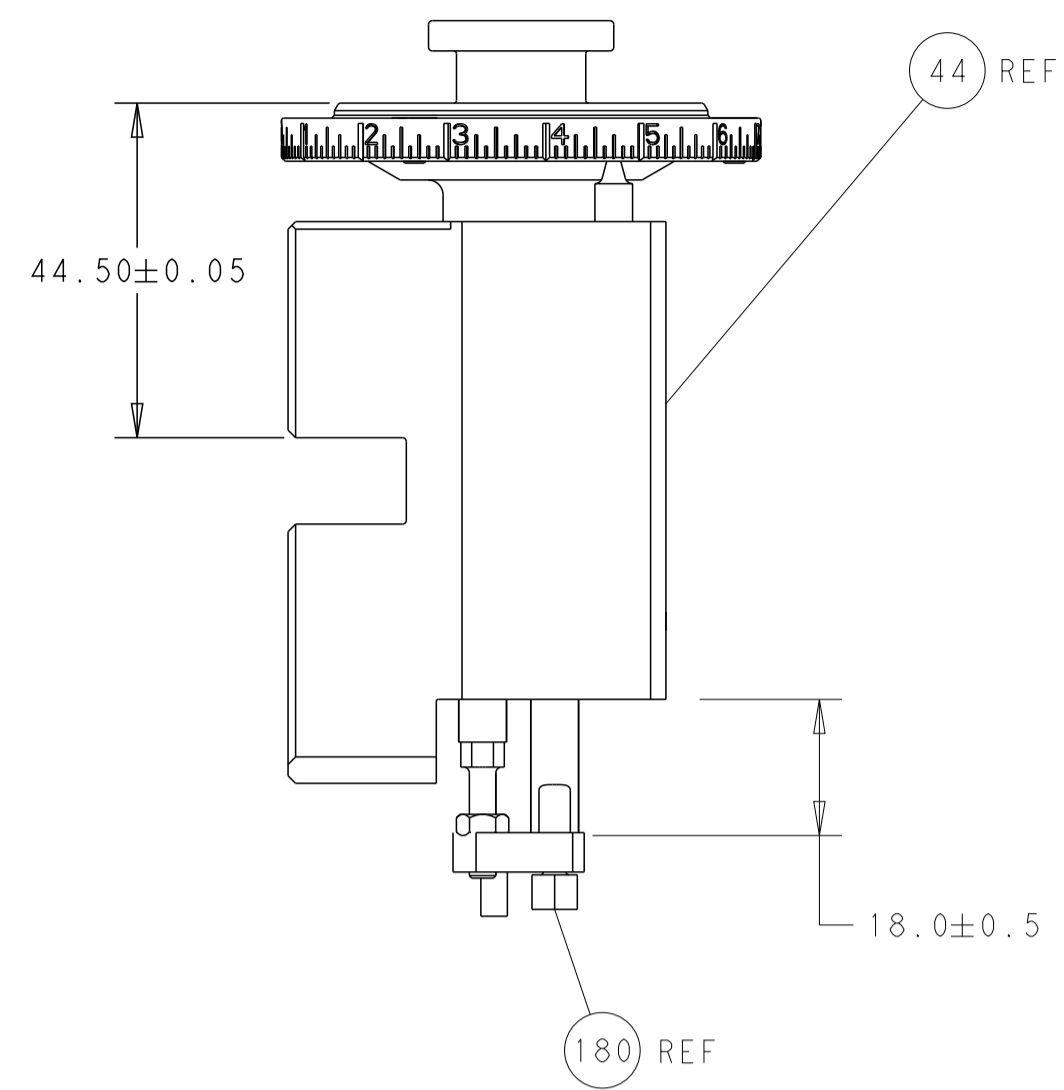
***WARNING**
ON INSTALLATION, SET WIRE DISC TO CRIMP HEIGHT REFERENCE SETTING FOR LARGEST WIRE SIZE. CRIMP HEIGHT REFERENCE SETTINGS GREATER THAN THE VALUE SHOWN MAY CAUSE DAMAGE TO THE CRIMP TOOLING, REFER TO THE INSTRUCTION SHEET FOR PROPER SETUP AND ADJUSTMENTS.

LOC	DIST	REVISIONS					
A	66	P	LTN	DESCRIPTION	DATE	DWN	APVD
		1		PRELIMINARY	29JAN2019	RK	CT
		A		RELEASED	26FEB2019	FZ	YY
		B		ECR-23-193932	30NOV2023	JWC	TE

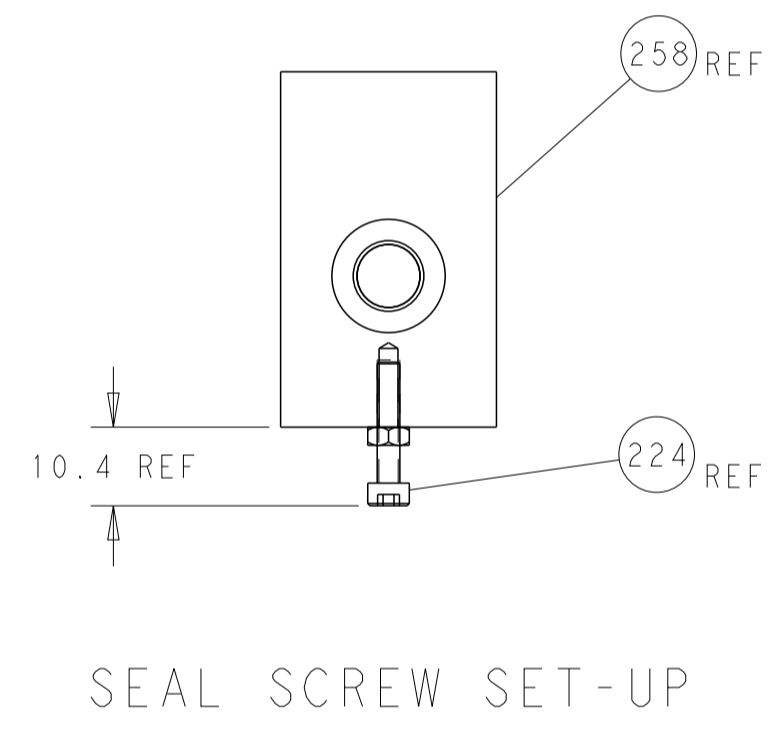
-	1	1	1803203-3	BLOCK, FRONT DEPRESSOR	258		
-	1	1	2119641-1	FEED CAM, AIR FEED	248		
-	1	1	2119082-2	CAM, SNAIL, INSULATION ADJUSTMENT	244		
-	1	1	2079764-1	WASHER, WAVE SPRING, CREST-TO-CREST	243		
	-	1	2119083-1	RETAINER, INSULATION DIAL	242		
-	1	1	2844940-4	AIR FEED MODULE	238		
	-	1	1-2168083-3	SCR, SKT HD CAP, RoHS, M3 X 16	224		
-	1	1	5018030-1	NUT, HEX, REG, RoHS, M3	223		
-	1	1	455888-8	SPACER, CRIMPER -	185		
	-	1	1752354-3	STANDOFF, HOLD-DOWN	180		
-	1	1	6-993111-6	PIN, SLOTTED SPRING 3.0 X 14.0	177		
-	1	1	8-22280-7	SPRING, COMPRESSION	176		
-	1	1	1752353-2	GUIDE PIN, HOLDDOWN	175		
-	1	1	1901680-2	GUIDE PIN, HOLDDOWN	174		
-	REF	REF	994970-2	COUNTER, MAGNETIC	164		
-	1	1	1-455888-1	SPACER, CRIMPER -	82		
-	1	1	1803607-4	DOCUMENTATION PACKAGE	71		
-	2	2	2-18032-2	SCR, SET, FLT PNT, M3 X 10.0	70		
-	1	1	2119740-1	TAG, IDENTIFICATION	67		
-	2	2	2168078-1	SCREW, DRIVE, RH, RoHS, 2 x .188	66		
-	1	1	1976052-1	HOLDDOWN, TERMINAL	65		
-	2	2	2168400-8	SHCS, LOW HEAD, RoHS, M4 X 16	64		
-	1	1	2168083-2	SCR, SKT HD CAP, RoHS, M4 X 8.0	60		
-	1	1	5-18022-5	SCR, HEX HD CAP, M4 X 6.0	59		
-	3	3	2168400-4	SHCS, LOW HEAD, RoHS, M4 X 8	57		
-	2	2	2168083-9	SCR, SKT HD CAP, RoHS, M4 X 20	56		
-	2	2	5018030-1	NUT, HEX, REG, RoHS, M3	54		
-	2	2	986965-8	NUT, LOCK, HEX, TORQUE (M4)	53		
-	1	1	1-5018030-0	NUT, HEX, REG, RoHS, M3.5	52		
-	1	1	2063961-9	FEED FINGER	51		
-	1	1	18023-9	SCR, SKT HD CAP M4 X 6.0	49		
-	1	1	2119655-5	APPLICATOR BASIC ASSEMBLY, EF	46		
-	1	1	1803517-1	RAM ASSEMBLY, EF ATLANTIC	44		
-	1	1	1803602-1	SCR, BHSC, RoHS (M8 X 25)	41		
-	7	7	1-18028-2	WASHER, FLAT, REG M4	33		
-	2	2	2168083-9	SCR, SKT HD CAP, RoHS, M4 X 20	31		
-	2	2	2168083-2	SCR, SKT HD CAP, RoHS, M4 X 8.0	29		
-	1	1	240639-1	STRIPPER (MACHINING)	27		
-	2	2	1-2168083-5	SCR, SKT HD CAP, RoHS, M4 X 30	25		
-	1	1	1752371-5	PLATE, STRIP GUIDE	24		
-	1	1	240825-2	PLATE, STRIP HOLD DOWN	23		
-	2	2	22281-8	SPRING, COMPRESSION	22		
-	1	1	1803292-8	DRAG	20		
-	2	2	1901259-6	GUIDE, LOWER STRIP	18		
-	4	4	1-2079383-1	SCR, BHSC, RoHS (M6 X 12)	17		
-	1	1	3-240641-4	SPACER	16		
-	1	1	1752360-1	SPACER, HOLD-DOWN	13		
	-	1	240644-9	PLATE, REAR SHEAR	11		
-	-	-	-	-	10		
	-	1	690482-4	PLATE, FRONT SHEAR	9		
	1	2	1976995-4	ANVIL, COMBINATION	8		
	-	1	1-2217206-0	BLADE, SLUG	7		
-	-	-	-	-	6		
-	1	1	2-240641-6	SPACER	5		
-	1	1	238011-2	BLOCK, CRIMPER SPACER	4		
	1	2	1-1803018-4	CRIMPER, INSULATION Ø	3		
-	1	1	455888-8	SPACER, CRIMPER -	2		
	1	2	4-568176-3	CRIMPER, WIRE	1		
-	77	72	-2	PART NO		DESCRIPTION	ITEM NO

DIMENSIONS:		TOLERANCES UNLESS OTHERWISE SPECIFIED:		DWN R. KNEPPER 28-JAN-19		CHK M. HERR 28-JAN-19		APVD C. TOPPER 28-JAN-19		NAME Ocean End Feed Applicator	
mm		0 PLC ±	1 PLC ±	2 PLC ±	3 PLC ±	4 PLC ±	ANGLES ±	FINISH		SIZE A1	CAGE CODE 00779
MATERIAL		FINISH		WEIGHT		SCALE 1:1		SHEET 1 OF 4		REV B	
Customer Accessible Production Drawing											

LOC	DIST	REVISIONS					
A	66	P	LTN	DESCRIPTION	DATE	DWN	APVD
		-		SEE SHEET 1			

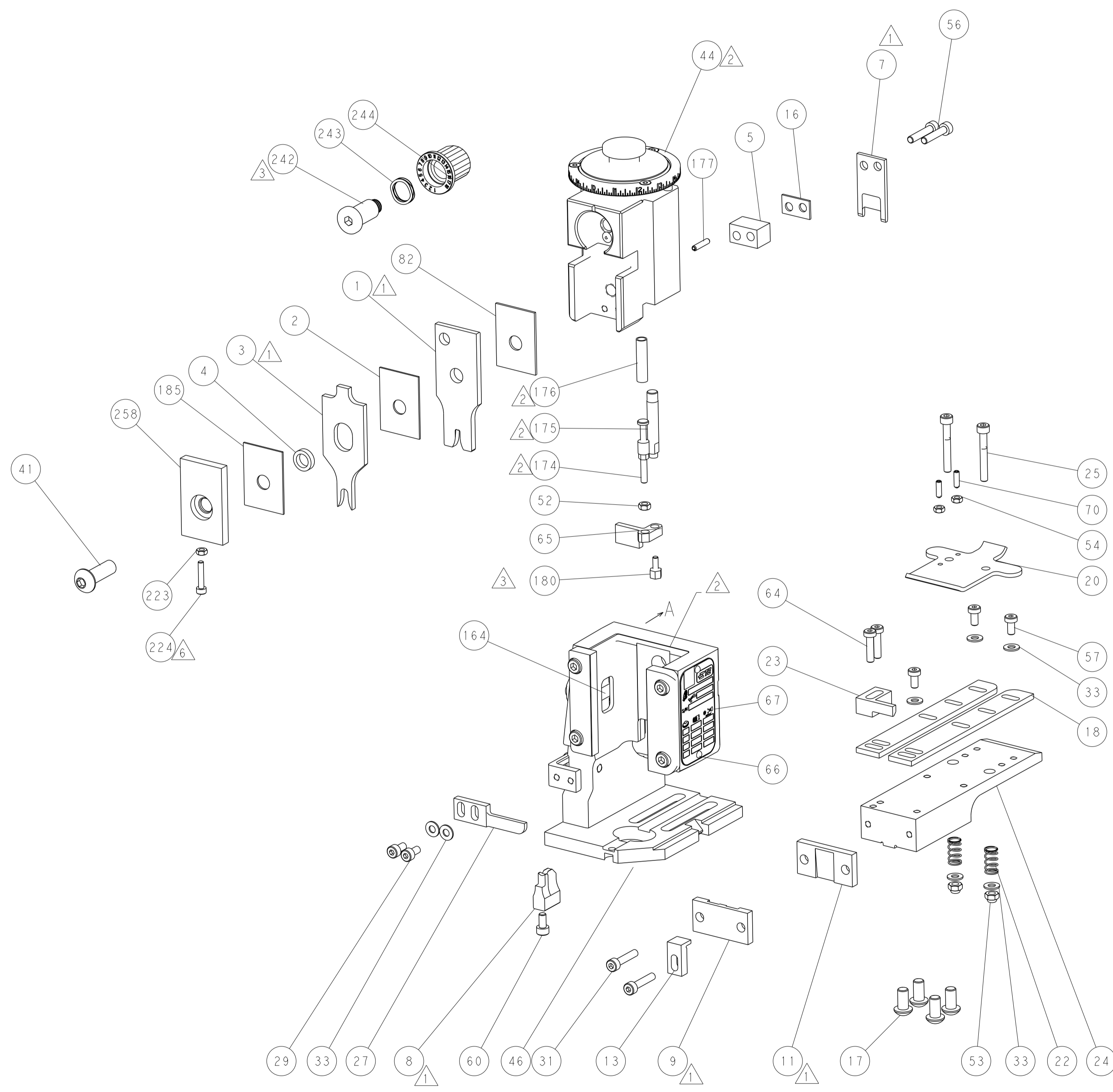
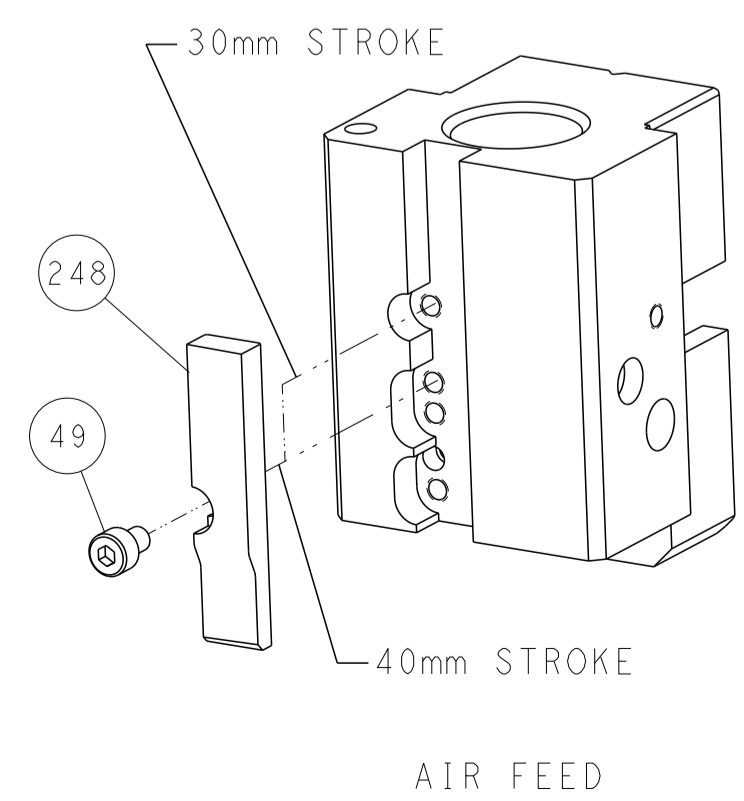


RAM AND HOLDDOWN SET-UP

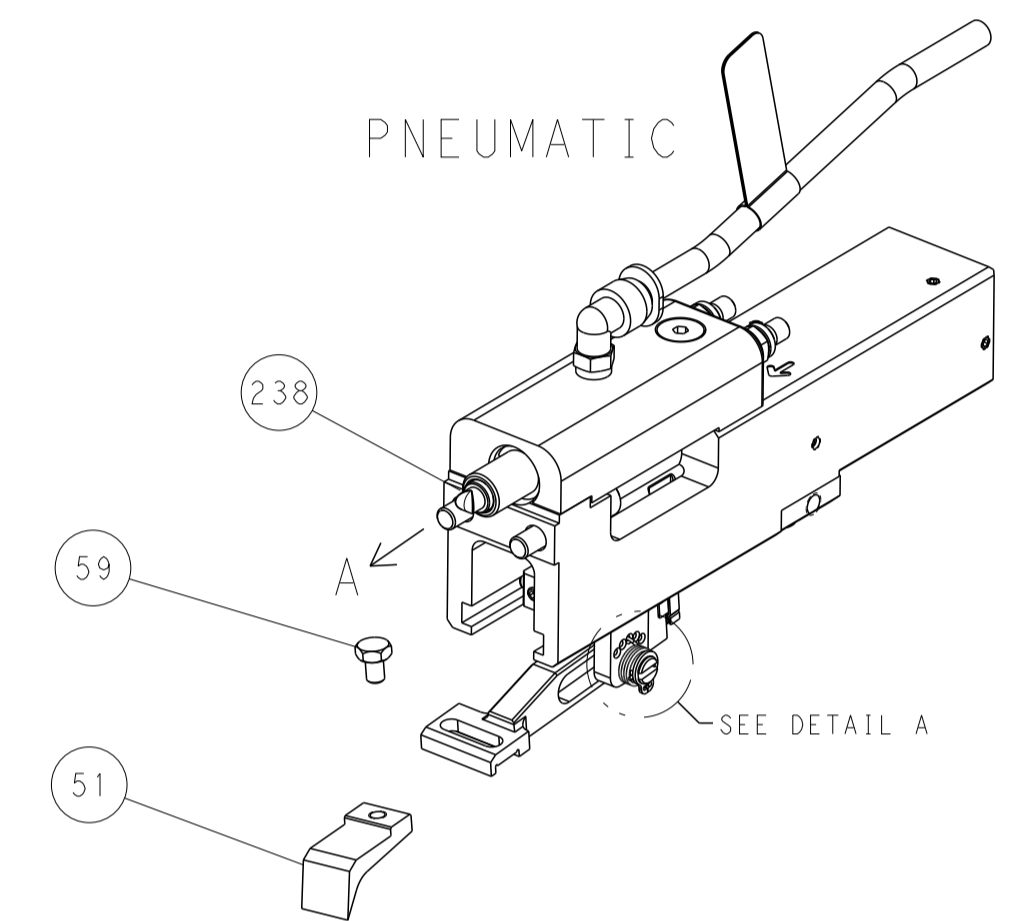


SEAL SCREW SET-UP

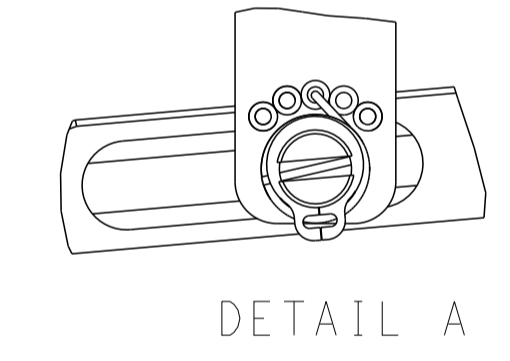
CAM POSITION



FEED TYPE



FEED SPRING SETTING POSITION



DIMENSIONS: mm 		TOLERANCES UNLESS OTHERWISE SPECIFIED: 0 PLC ± 1 PLC ± 2 PLC ± 3 PLC ± 4 PLC ± ANGLES ± FINISH		DWN R. KNEPPER 28-JAN-19 CHK M. HERR 28-JAN-19 APVD C. TOPPER 28-JAN-19 PRODUCT SPEC APPLICATION SPEC WEIGHT SCALE 1:1 SHEET 2 OF 4 REV B		NAME Ocean End Feed Applicator SIZE CAGE CODE DRAWING NO. RESTRICTED TO A 00779 C=2150212	
MATERIAL FINISH				CUSTOMER ACCESSIBLE PRODUCTION DRAWING		SCALE 1:1 SHEET 2 OF 4 REV B	