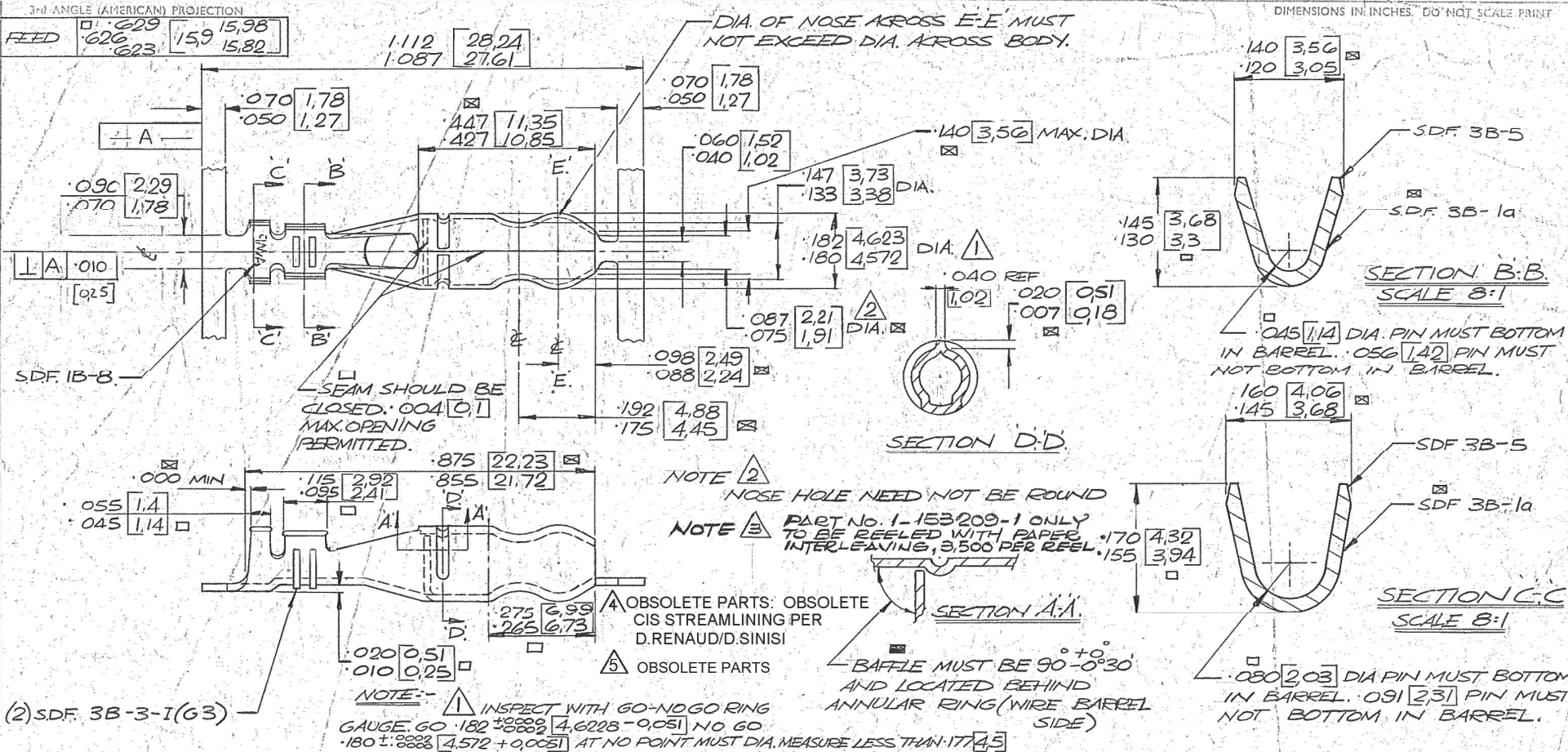


NUMBER
153209

This information is confidential and is disclosed to you on condition that no further disclosure is made by you to other than Air Products personnel without written authorization from AIRCRAFT-MARINE PRODUCTS (GREAT BRITAIN) LTD



L3	REVISED PER ECR-19-012286	20SEP2016	PC	
L2	REVISED PER ECR-17-012304	24AUG17	DT	TD
L1	REVISED PER ECO-09-025273	11NOV09	KK	
L	EBDO-0237-03	6/8/03	SS	
K	SEE ECN EBOO-0381-93	11-93	DET	
J	NOTE 3 ADDED PER ECN EBOO-0138-93	17-93	T.T.	
H	SEE ECN	19-10-00	EC	ES
G	-4 ADDED	19-12-70	ES	ES
F	CUT-OUT IN W/6 TO SHURPLUG TRANSITION	12-8-70	D.G.R.	802229
E	ADD	22-8-76	G.S.	810435
D	+3 ADDED	23-8-74	ES	06901
C	REVAS PER ECN	16-4-73	AWVC	8103583
B	DIM .075 - .087 WFS .075 - .085	29-1-73	PLH	8103488
A	SEE ECN	28-8-71	PA	8102679
0	RELEASED FOR PRODUCTION 11/8/00	6-7-71	DT	
NO.	ALTERATION	DATE	BY	IND.

DIRECTION OFF TOP OF REEL	
SDF 1B-15C.	
SURFACE AREA	SQ. IN.
WIRE RANGE 18-10	W.D.W [737]
INS. RANGE .075 [1,91] - .110 [2,79]	I.D.W [350]
SPECIFICATION CLASSIFICATION	
CRITICAL	MINOR
MAJOR	REF. (NONE)
LAYOUT NO.	QTY/REEL 6M
DIE 3155	
TRAINING SURF. NOT TO EXCEED .005 [0,13]	

STOCK THK.	.018 ± .001 [0,457 ± 0,025] x 1,090 ± .003 [27,69 ± 0,08] WIDE
MATERIAL DESCRIPTION	
A	BRASS 100-86 TEMP. 082 Y2H
B	COPPER
C	STEEL
D	RED BRASS 100-42G TEMP G
PLATING DESCRIPTION	
1	PRE-TIN 112-65-0
1	ELECTRO-TIN 112-65-1 2-10 μm
NUMBER	MAT.

153209-4	A	△
153209-3	D	△
153209-2	A2	△
153209-1	A1	△
153209-2	A2	△
153209-1	A1	△
TITLE 180 [4,57] DIA SHUR PLUG.		
FILE		
NO. 153209		
7-1371		

PRINT DIST.
A
B

RJ MAGUIRE 23/1/71
G-DELL 26/6/71