

4

3

2

1

THIS DRAWING IS UNPUBLISHED.

RELEASED FOR PUBLICATION

© COPYRIGHT

ALL RIGHTS RESERVED.

LOC DIST


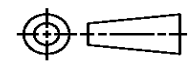
REVISIONS

P	LTR	DESCRIPTION	DATE	DWN	APVD

# REPLACED BY OCEAN STYLE APPLICATOR PART NUMBER

FOR REPLACEMENT PARTS FOR APPLICATOR REFER TO ADDITIONAL PAGE(S). SPARE PARTS KIT (IF LISTED) WILL REMAIN AVAILABLE.

THE REPLACEMENT OCEAN STYLE APPLICATOR HAS THE SAME TERMINATOR/PRESS INTERFACE AS APPLICATOR

THIS DRAWING IS A CONTROLLED DOCUMENT.		DWN	 TE Connectivity		
DIMENSIONS:		CHK			
TOLERANCES UNLESS OTHERWISE SPECIFIED:		APVD	NAME		
 0 PLC ± 1 PLC ± 2 PLC ± 3 PLC ± 4 PLC ± ANGLES ±		PRODUCT SPEC	RESTRICTED TO		
		APPLICATION SPEC	SIZE	CAGE CODE	DRAWING NO
MATERIAL	FINISH	WEIGHT	A3	C-	
		SCALE	SHEET	OF	REV

PART NUMBER	REV	TERMINATOR	FEED TYPE	DESCRIPTION
1530024-1	D	LEADMAKER	PNEUMATIC FEED	CUTS CARRIER
1530024-2	D	BENCH	PNEUMATIC FEED	CUTS CARRIER
1530024-6	D	LEADMAKER	PNEUMATIC FEED	CONTINUOUS CARRIER
7-1530024-1	D	LEADMAKER	PNEUMATIC FEED	-1 AND SPARE PARTS
7-1530024-2	D	BENCH	PNEUMATIC FEED	-2 AND SPARE PARTS
7-1530024-6	D	LEADMAKER	PNEUMATIC FEED	-6 AND SPARE PARTS
7-1530024-7	B	-	-	SPARE PARTS KIT

CRIMP	SIZE	TYPE	RANGE
WIRE	1.40 [ .055 IN ]	F	0.50mm-0.20mm
INSUL	1.83 [ .072 IN ]	O	1.15-1.60 [ .045-.063 IN ]

WIRE STRIP LENGTH	APPL INSTRUCTION
3.05-3.35 [ .120-.132 IN ]	411-3283

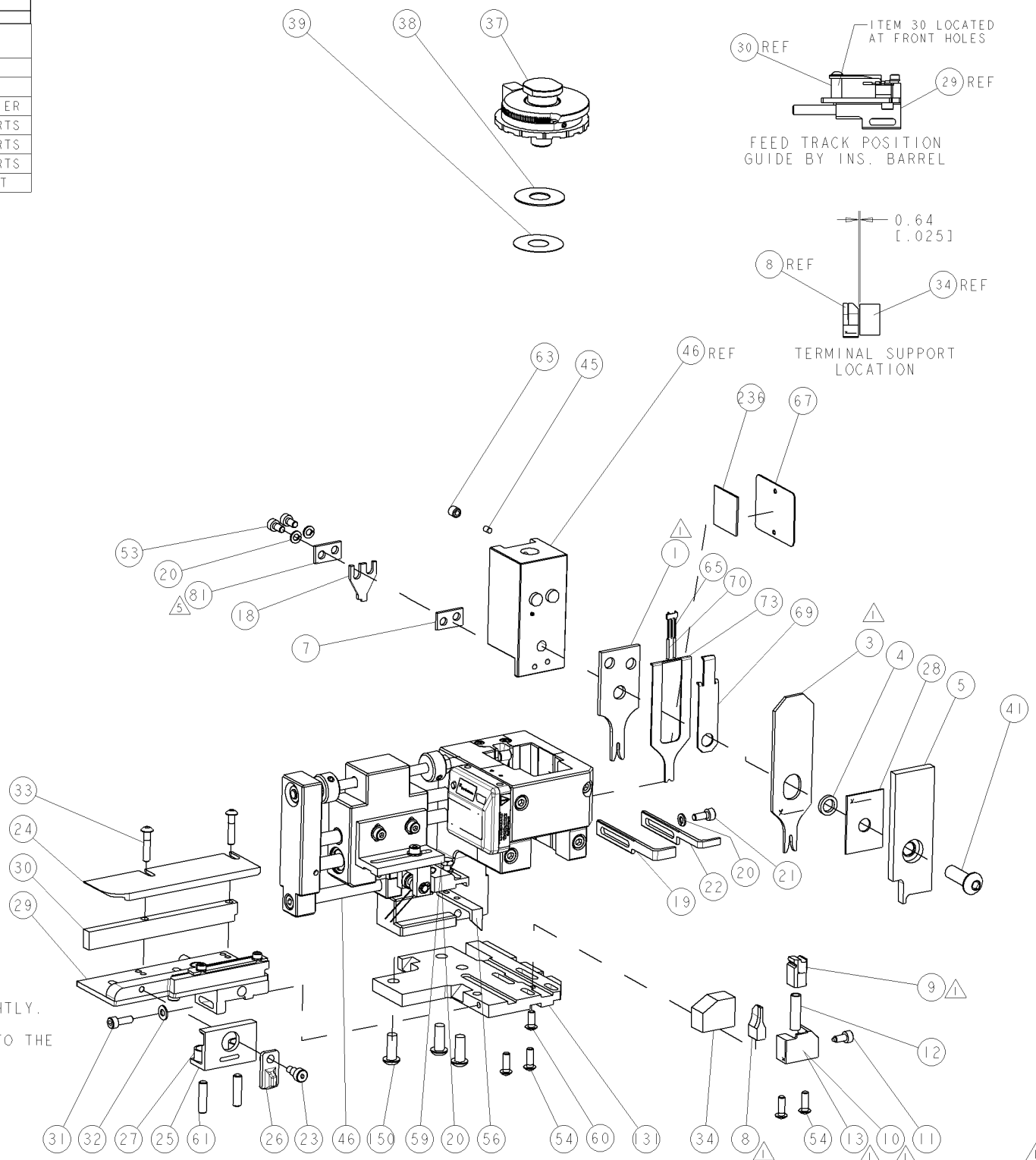
TERMINAL APPL SPEC	FEED
114-18021	7.00 [ .276 IN ]

WIRE SIZE	CRIMP HEIGHT	REF SETTING
0.50mm <sup>2</sup>	.86 ± 0.05 [ .034 ± .002 IN ]	B8
0.35mm <sup>2</sup>	.76 ± 0.05 [ .030 ± .002 IN ]	C6
0.25mm <sup>2</sup>	.72 ± 0.05 [ .028 ± .002 IN ]	C9

- ⚠ RECOMMENDED SPARE PARTS.
- GREASE RAM, CAM, CAM FOLLOWER AND FEED ROD LIGHTLY.
  - CERTAIN TERMINALS REQUIRE LUBRICATION. REFER TO THE TERMINATING UNIT DOCUMENTATION.
  - LUBRICATE DAILY PER THE APPLICATOR INSTRUCTION SHEET SUPPLIED WITH THE APPLICATOR.
  - WHEN RUNNING TERMINALS 968893 AND 1241918, MOVE ITEM 81 TO THE FRONT OF ITEM 18.

**\* WARNING**  
 ON INSTALLATION, SET WIRE DISC TO LARGEST WIRE SIZE SETTING. USE OF SETTINGS BELOW MIN. REQUIRED CRIMP HEIGHT SETTING WILL CAUSE DAMAGE TO CRIMP TOOLING.



REV	DATE	BY	CHKD	APPV
C2	ECR-11-009012		RS	SX
D	ECR-12-001877		RS	SX

AR	AR	AR	AR	AR	AR	AR	AR	982057-2	TAPE, FOAM	236
-	3	3	3	3	3	3	3	994988-1	SCR, BTN SKT HD CAP M6X16.0 W/NYLOK	150
-	1	1	1	1	1	1	1	1320992-1	PLATE, BASE	131
-	1	1	1	1	1	1	1	1-240641-3	SPACER	81
-	1	1	1	1	1	1	1	1490525-1	DEPRESSOR, WIRE	73
-	1	1	1	1	1	1	1	1338705-8	DOCUMENTATION PACKAGE	71
-	2	2	2	2	2	2	2	1-23147-4	SPRING, COMPRESSION	70
-	1	1	1	1	1	1	1	1490524-2	DEPRESSOR, SPACER	69
-	1	1	1	1	1	1	1	1-461264-0	PLATE, IDENTIFICATION	67
-	1	1	1	1	1	1	1	1424350-1	HOLDER, PIN, WIRED	65
-	1	1	1	1	1	1	1	3-18031-0	SCR, SET, CUP POINT M6 X 6.0	63
-	2	2	2	2	2	2	2	2-18032-5	SCR, SET, FLT POINT M5 X 20.0	61
-	1	1	1	1	1	1	1	18024-7	SCR, BTN SKT HD CAP (M4 X 10.0)	60
-	1	1	1	1	1	1	1	5-18022-2	SCR, HEX HD CAP M4 X 8.0	59
-	1	1	1	1	1	1	1	1338685-1	PAWL, FEED	56
-	4	4	4	4	4	4	4	18024-8	SCR, BTN SKT HD CAP (M4 X 12.0)	54
-	2	2	2	2	2	2	2	1-18023-0	SCR, SKT HD CAP M4 X 8.0	53
-	1	1	1	1	1	1	1	1333303-1	ASSEMBLY, AIR FEED	46
-	1	1	1	1	1	1	1	690191-1	PLUG, NYLON	45
-	-	-	-	-	-	-	-	-	-	44
-	1	1	1	1	1	1	1	2-18024-6	SCR, BTN SKT HD CAP (M8 X 25.0)	41
-	1	1	1	1	1	1	1	690125-1	SHIM SUB-ASSY	39
-	1	1	1	1	1	1	1	469367-8	SHIM	38
-	1	1	1	1	1	1	1	879103-3	FINE ADJUST HEAD ASSEMBLY	37
-	1	1	1	1	1	1	1	1320934-6	SUPPORT, TERMINAL	34
-	2	2	2	2	2	2	2	1-18024-0	SCR, BTN SKT HD CAP (M4 X 20.0)	33
-	1	1	1	1	1	1	1	18027-2	WASHER, FLAT, REG M4	32
-	1	1	1	1	1	1	1	1-18023-2	SCR, SKT HD CAP M4 X 12.0	31
-	1	1	1	1	1	1	1	1320908-4	SPACER, STRIP GUIDE	30
-	1	1	1	1	1	1	1	1633073-1	STRIP GUIDE ASSEMBLY	29
-	1	1	1	1	1	1	1	1-455888-0	SPACER, CRIMPER	28
-	2	2	2	2	2	2	2	1-22284-0	SPRING, COMPRESSION	27
-	1	1	1	1	1	1	1	356835-1	LEVER, DRAG RELEASE	26
-	1	1	1	1	1	1	1	240792-1	DRAG, TERMINAL	25
-	1	1	1	1	1	1	1	1320928-1	PLATE, STRIP GUIDE	24
-	1	1	1	1	1	1	1	980371-4	SCR, SKT HD SHLDR 5.0 DIA X 6.0	23
-	1	1	1	1	1	1	1	690472-2	STRIPPER	22
-	1	1	1	1	1	1	1	1-18023-1	SCR, SKT HD CAP M4 X 10.0	21
-	4	4	4	4	4	4	4	18025-2	WASHER, SPRG LOCK, REG M4	20
-	-	-	-	-	-	-	-	690472-1	STRIPPER	19
-	1	1	1	1	1	1	1	879657-2	HOLD DOWN	18
-	1	1	1	1	1	1	1	1338684-1	SHEAR HOLDER, FRONT	13
-	1	1	1	1	1	1	1	3-22280-3	SPRING, COMPRESSION	12
-	1	1	1	1	1	1	1	356885-4	STOP, SHEAR	11
-	-	-	-	-	-	-	-	1320921-1	SHEAR HOLDER, FRONT, CUT	10
-	1	1	1	1	1	1	1	462006-1	FLOATING SHEAR, FRONT	9
1	2	2	2	1	1	1	1	1-1338690-2	ANVIL, COMBINATION .055	8
-	1	1	1	1	1	1	1	4-240641-2	SPACER	7
-	-	-	-	-	-	-	-	-	-	6
-	1	1	1	1	1	1	1	1-455889-4	DEPRESSOR, SHEAR	5
-	1	1	1	1	1	1	1	238011-8	BLOCK, CRIMPER SPACER	4
1	2	2	2	1	1	1	1	8-904741-0	CRIMPER, INSUL O PREMIUM	3
1	2	2	2	1	1	1	1	1-562108-5	CRIMPER, WIRE, F	1

REV	DATE	BY	CHKD	APPV
B	01AUG2009	B. HIGMAN		
C	01AUG2009	T. ELBIN		
A	01AUG2009	N. DEMING		

DIMENSIONS:	TOLERANCES UNLESS OTHERWISE SPECIFIED:
mm [ IN ]	0 PLC ±
	1 PLC ±
	2 PLC ±
	3 PLC ±
	4 PLC ±
	ANGLE
	FINISH

APPLICATOR SPEC	See Table
SIZE	00779
WEIGHT	

ITEM NO	DESCRIPTION
77	-76 -72 -71 -6 -2 -1

DATE	BY	TE CONNECTIVITY
01AUG2009	B. HIGMAN	Harrisburg, PA 17105-3608

PRODUCT SPEC	APPLICATION SPEC
FINE ADJUST SIDE FEED	
HDI APPLICATOR	

SCALE	SHEET	OF	REV
3:5	1	1	D