



---

Qualification Test Report Of EP.200 Connector

---

1. INTRODUCTION

Test was performed on EP.200 connector to qualify the part which was developed for Whirlpool.

Test was performed at TE Shanghai Electrical Test Laboratory per Whirlpool C4 test requirement and TE specification. For C4 test, please refer to 502-106201\_B for detailed information. This report mainly showed the critical qualification test per TE specification (108-5609).

2. TEST SPECIMENS

Description	P/N	Part Revision
EP.200 Header Assembly	3-1744037-6	1
EP.200 Plug Housing	2-1744036-6	1
EP.200 Receptacle Contact	1123721-1	T
EP.200 TPA RETAINER	2232900-6	1

3. TEST CONDITIONS



Unless otherwise specified, all the test shall be performed in any combination of the following test conditions.

Temperature	15 ~ 35°C
Relative Humidity	25 ~ 75%

## 4. TEST RESULT

### 4.1 Heat Resistance

Spec: No physical damage after soldering

Description of pre-test: Normal	Description of post-test: Normal(260°C 10sec)
	
Test mounting picture	Examined picture at 30X magnification
	

From the test result, all samples have no physical damage (no melt or pin sink issue ..) after the soldering test.

### 4.2 Header Post Pin Retention Force

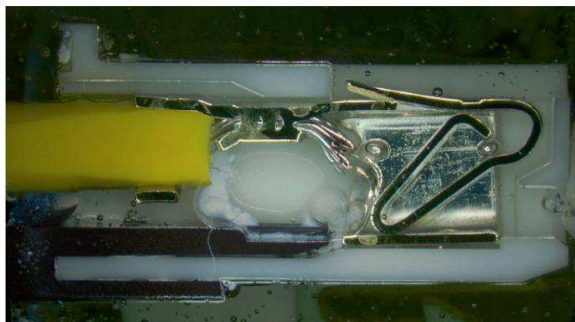
Spec : (29.4N min.)

All samples can meet the spec. (35.3N max., 30N min.)

### 4.3 TPA Confirmation

From below picture, TPA can prevent contact from half mating. It is OK.

Normal case



Contact half mating

