

Z-TYPE™ WIRE & CABLE MARKERS

Identification

PUSH-ON PRE-PRINTED MARKERS FOR COST-EFFECTIVE IDENTIFICATION OF WIRES & SMALL CABLES

Z-TYPE™ ‘Critchley’ Markers are individual push-on markers used to identify wires and small cables permanently. The markers are manufactured using PVC and designed with an expanding profile, enabling each marker to accommodate a wide range of wire/cable sizes.

SPEED-UP YOUR PROJECTS

- **Pre-Printed markers.** No Need for printers, ribbons and software. Markers are Pre-printed for easy and quick on-site installation.
- **Compact Design** Marker sizes approx. 4.5 mm with a printer character height of 1.8 mm to 2.7 depending on wire diameter.
- **Easy identification** Pre-printed letters, numbers and common signs. Colored markers printed with international color coding (0-Black, 1-Brown etc.).

SECURED INSTALLATION

- **Visual control:** Push-On applied directly to the non-terminated wire with no gaps in the marker.
- **Quick and easy:** Made from Self-extinguishing PVC material.
- **Always perfect:** Specially designed marker profile allows easy fitting and holds onto the wire. The chevron cut option ensures the markers remain aligned on the wire.

FOR ALL YOUR NEEDS

- **Cost-effective solution** for wire identification applications.
- **Large wire size range:** Marker sizes can cover wire diameters from 1.5 mm² to 12.7 mm².
- **Extreme conditions:** Resist to temperature range from -45°C to 70°C. Resistant to key Industrial fluid.

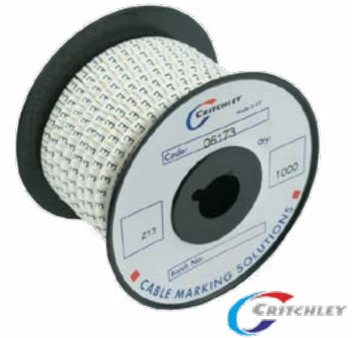


Z-TYPE™ WIRE & CABLE MARKERS

Identification & labelling

Z-TYPE™ WIRE CABLE MARKERS

Z-Type™ markers are an identification solution for pre-terminated wires. They are a simple, cost-effective solution for many commercial wire identification applications. The markers can be supplied either straight cut or chevron cut. The chevron cut option ensures the markers remain aligned on the wire. Standard Z-Type markers are yellow or white with black legends. Suitable for industrial applications. Other colors available, consult your local TE Representative.



FEATURES AND BENEFITS

- Z-TYPE™ Markers are a cost-effective solution for many commercial wire identification applications
- Self-extinguishing
- Resistant to key Industrial fluids, including those used in Mass transit, aviation and military
- Pre-Printed markers, no need for additional printer hardware or software.

SPECIFICATIONS

- **Temperature rating:** operating range -45°C to 70°C (-49°F to 158°F)
- **Specifications and Approvals:** BS 6746C:1993 - IEC 60304
- **For more information:**
 - Technical Datasheet: TTDS-026
 - Product specification Sheet: RW-2535.

APPLICATIONS

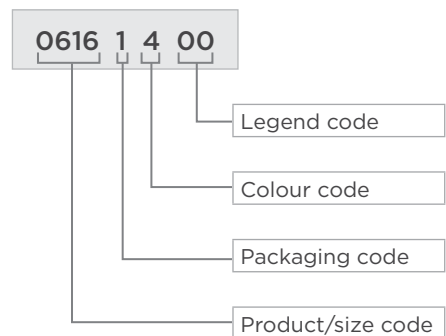
- Industrial
- Electrical Cabinet
- Oil & Gas.

ORDERING INFORMATION

LEGEND CODING	Letters					
Printed Marking Printed sign codification (legend)	A	B	C	D	E	F
	10	11	12	13	14	15
	G	H	I	J	K	L
	16	17	18	19	20	21
	M	N	O	P	Q	R
	22	23	24	25	26	27
	S	T	U	V	W	X
	28	29	30	31	32	33
	Y	Z				
	34	35				
	Numbers					
	0	1	2	3	4	5
	00	01	02	03	04	05
	6	7	8	9		
	06	07	08	09		
	Sign					
	+	-	/	⏏	.	
	PLUS	MINUS	SLASH	EARTH	DOT	BLANK
	36	37	38	40	48	49

COLOR CODING	0	1	2	3	4	5	6	7	8	9
Only white & yellow are standard products. Other colors on request.										

ORDERING DESCRIPTION SYSTEM



PACK CODE	Package Type
1	Box
3	Reel



Z-TYPE™ WIRE & CABLE MARKERS

Identification & labelling

CHEVRON CUT TYPE CROSS-REFERENCE TABLE FOR MARKERS & CORRESPONDING CABLES



Product / Size code	Size	External Dia (mm)	Cable Dia Range (mm)	Cable Size (mm ²) Approx.	Cut type
1151	Z5	3	1.5 - 2.0	1.7 - 3.1	Chevron
1152	Z7	3.7	2.0 - 3.2	3.1 - 8.0	
1153	Z9	4.3	2.5 - 4.0	4.5 - 12.5	
1154	Z11	4.8	2.9 - 4.7	7.1 - 17.3	
1155	Z13	5.8	3.4 - 5.7	9.0 - 25.5	
1156	Z15	6.3	3.8 - 6.3	11.3 - 31.1	
1157	Z18	7.4	4.3 - 6.9	14.5 - 73.4	
1158	Z23	9.2	5.5 - 8.9	23.7 - 62.2	
1159	Z35	13	7.9 - 12.7	49 - 126.6	

STRAIGHT CUT TYPE CROSS-REFERENCE TABLE FOR MARKERS & CORRESPONDING CABLES



Product / Size code	Size	External Dia (mm)	Cable Dia Range (mm)	Cable Size (mm ²) Approx.	Cut type
0580	Z5	3	1.5 - 2.0	1.7 - 3.1	Straight
0581	Z7	3.7	2.0 - 3.2	3.1 - 8.0	
0615	Z9	4.3	2.5 - 4.0	4.5 - 12.5	
0616	Z11	4.8	2.9 - 4.7	7.1 - 17.3	
0617	Z13	5.8	3.4 - 5.7	9.0 - 25.5	
0618	Z15	6.3	3.8 - 6.3	11.3 - 31.1	
0620	Z18	7.4	4.3 - 6.9	14.5 - 73.4	
0622	Z23	9.2	5.5 - 8.9	23.7 - 62.2	
0624	Z35	13	7.9 - 12.7	49 - 126.6	



Z-TYPE™ WIRE & CABLE MARKERS

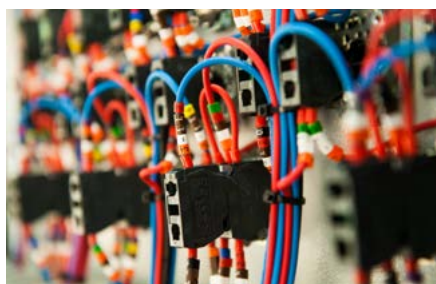
Identification & labelling



Z5 SIZE STRAIGHT CUT SUPPLIED IN BOX

- Marker Diameter: 3 mm
- Marker Width: 4.5 mm
- Character Height: 1.8 mm
- For Cable Dia: 1.5 - 2 mm (0.06 - 0.78 Inch)

Printed Marking	Printed sign codification (légende)	 White color / Printed black		 Yellow color / Printed black		Packaging Qty (Pieces)	Packaging type
		TCPN	Part Description	TCPN	Part Description		
A	10	EC0050-000	05801910	EC9950-000	05801410	1000	Box
B	11	EC0051-000	05801911	EC6812-000	05801411		
C	12	EC0052-000	05801912	EC9951-000	05801412		
D	13	EC0053-000	05801913	EC9952-000	05801413		
E	14	EC0054-000	05801914	EC9954-000	05801414		
F	15	EC0055-000	05801915	EC9956-000	05801415		
G	16	EC0056-000	05801916	EC9958-000	05801416		
H	17	EC0057-000	05801917	EC9960-000	05801417		
I	18	EC0058-000	05801918	EC9962-000	05801418		
J	19	EC0059-000	05801919	EC9963-000	05801419		
K	20	EC0060-000	05801920	EC9965-000	05801420		
L	21	EC0061-000	05801921	EC9966-000	05801421		
M	22	EC0062-000	05801922	EC9967-000	05801422		
N	23	EC0063-000	05801923	EC9968-000	05801423		
O	24	EC0064-000	05801924	EC9969-000	05801424		
P	25	EC0065-000	05801925	EC0032-000	05801425		
Q	26	EC0066-000	05801926	EC9970-000	05801426		
R	27	EC0067-000	05801927	EC9971-000	05801427		
S	28	EC0068-000	05801928	EC0033-000	05801428		
T	29	EC0069-000	05801929	EC9972-000	05801429		
U	30	EC0070-000	05801930	EC9973-000	05801430		
V	31	EC0071-000	05801931	EC9974-000	05801431		
W	32	EC0072-000	05801932	EC9975-000	05801432		
X	33	EC0073-000	05801933	EC0034-000	05801433		
Y	34	EC0074-000	05801934	EC9976-000	05801434		
Z	35	EC0075-000	05801935	EC9977-000	05801435		
0	00	EC0040-000	05801900	EC0022-000	05801400		
1	01	EC0041-000	05801901	EC0023-000	05801401		
2	02	EC0042-000	05801902	EC0024-000	05801402		
3	03	EC0043-000	05801903	EC0025-000	05801403		
4	04	EC0044-000	05801904	EC0026-000	05801404		
5	05	EC0045-000	05801905	EC0027-000	05801405		
6	06	EC0046-000	05801906	EC0028-000	05801406		
7	07	EC0047-000	05801907	EC0029-000	05801407		
8	08	EC0048-000	05801908	EC0030-000	05801408		
9	09	EC0049-000	05801909	EC0031-000	05801409		
+	36	EC0076-000	05801936	EC0035-000	05801437		
-	37	EC0077-000	05801937	EC9981-000	05801438		
/	38	EC0078-000	05801938	EC9983-000	05801440		
⊥	40	EC0080-000	05801940	EC9949-000	05801448		
.	48	EC0088-000	05801948	EC0036-000	05801505		





Z-TYPE™ WIRE & CABLE MARKERS

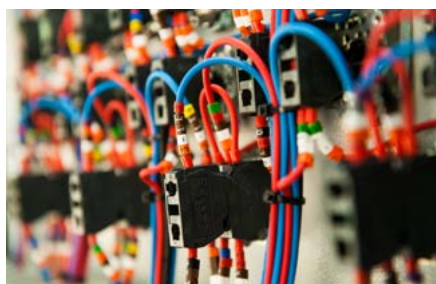
Identification & labelling



Z7 SIZE STRAIGHT CUT SUPPLIED IN BOX

- Marker Diameter: 3.7 mm
- Marker Width: 4.5 mm
- Character Height: 1.9 mm
- For Cable Dia: 2 – 3.2 mm (0.78 – 0.12 Inch)

Printed Marking	Printed sign codification (légende)	 White color / Printed black		 Yellow color / Printed black		Packaging Qty (Pieces)	Packaging type
		TCPN	Part Description	TCPN	Part Description		
A	10	EC0223-000	05811910	EC0199-000	05811410	1000	Box
B	11	EC0224-000	05811911	EC0200-000	05811411		
C	12	EC0225-000	05811912	EJ1822-000	05811412		
D	13	EC0226-000	05811913	EJ1823-000	05811413		
E	14	EC0227-000	05811914	EJ1824-000	05811414		
F	15	EC0228-000	05811915	EJ1825-000	05811415		
G	16	EC0229-000	05811916	EJ1826-000	05811416		
H	17	EC0230-000	05811917	EC0201-000	05811417		
I	18	EC0231-000	05811918	EJ1827-000	05811418		
J	19	EC0232-000	05811919	EJ1828-000	05811419		
K	20	EC0233-000	05811920	EJ1830-000	05811420		
L	21	EC0234-000	05811921	EJ1831-000	05811421		
M	22	EC0235-000	05811922	EJ1832-000	05811422		
N	23	EC0236-000	05811923	EJ1834-000	05811423		
O	24	EC0237-000	05811924	EJ1837-000	05811424		
P	25	EC0238-000	05811925	EJ1840-000	05811425		
Q	26	EC0239-000	05811926	EJ1841-000	05811426		
R	27	EC0240-000	05811927	EJ1843-000	05811427		
S	28	EC0241-000	05811928	EJ1845-000	05811428		
T	29	EC0242-000	05811929	EC0202-000	05811429		
U	30	EC0243-000	05811930	EC0203-000	05811430		
V	31	EC0244-000	05811931	EC0204-000	05811431		
W	32	EC0245-000	05811932	EC0205-000	05811432		
X	33	EC0246-000	05811933	EJ1847-000	05811433		
Y	34	EC0247-000	05811934	EJ1848-000	05811434		
Z	35	EC0248-000	05811935	EJ1849-000	05811435		
0	00	EC0213-000	05811900	EC0189-000	05811400		
1	01	EC0214-000	05811901	EC0190-000	05811401		
2	02	EC0215-000	05811902	EC0191-000	05811402		
3	03	EC0216-000	05811903	EC0192-000	05811403		
4	04	EC0217-000	05811904	EC0193-000	05811404		
5	05	EC0218-000	05811905	EC0194-000	05811405		
6	06	EC0219-000	05811906	EC0195-000	05811406		
7	07	EC0220-000	05811907	EC0196-000	05811407		
8	08	EC0221-000	05811908	EC0197-000	05811408		
9	09	EC0222-000	05811909	EC0198-000	05811409		
+	36	EC0249-000	05811936	EC0206-000	05811436		
-	37	EC0250-000	05811937	EC0207-000	05811437		
/	38	EC0251-000	05811938	EJ1821-000	05811438		
⊥	40	EC0253-000	05811940	EC0208-000	05811440		
.	48	EC0259-000	05811948	EJ1820-000	05811448		





Z-TYPE™ WIRE & CABLE MARKERS

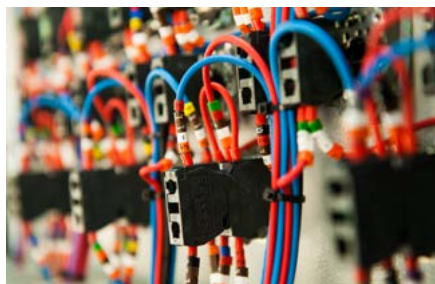
Identification & labelling



Z9 SIZE STRAIGHT CUT SUPPLIED IN BOX

- Marker Diameter: 4.3 mm
- Marker Width: 4.5 mm
- Character Height: 2.7 mm
- For Cable Dia: 2.5 mm – 4 mm (0.10 – 0.15 Inch)

Printed Marking	Printed sign codification (légende)	 White color / Printed black		 Yellow color / Printed black		Packaging Qty (Pieces)	Packaging type
		TCPN	Part Description	TCPN	Part Description		
A	10	EC0390-000	06151910	EC0367-000	06151410	1000	Box
B	11	EC0391-000	06151911	EC0368-000	06151411		
C	12	EC0392-000	06151912	EJ1952-000	06151412		
D	13	EC0393-000	06151913	EJ1953-000	06151413		
E	14	EC0394-000	06151914	EJ1954-000	06151414		
F	15	EC0395-000	06151915	EJ1956-000	06151415		
G	16	EC0396-000	06151916	EJ1957-000	06151416		
H	17	EC0397-000	06151917	EC0369-000	06151417		
I	18	EC0398-000	06151918	EJ1958-000	06151418		
J	19	EC0399-000	06151919	EJ1959-000	06151419		
K	20	EC0400-000	06151920	EJ1960-000	06151420		
L	21	EC0401-000	06151921	EJ1961-000	06151421		
M	22	EC0402-000	06151922	EJ1962-000	06151422		
N	23	EC0403-000	06151923	EJ1963-000	06151423		
O	24	EC0404-000	06151924	EJ1965-000	06151424		
P	25	EC0405-000	06151925	EJ1966-000	06151425		
Q	26	EC0406-000	06151926	EJ1967-000	06151426		
R	27	EC0407-000	06151927	EJ1968-000	06151427		
S	28	EC0408-000	06151928	EJ1969-000	06151428		
T	29	EC0409-000	06151929	EJ1970-000	06151429		
U	30	EC0410-000	06151930	EJ1971-000	06151430		
V	31	EC0411-000	06151931	EC0370-000	06151431		
W	32	EC0412-000	06151932	EJ1972-000	06151432		
X	33	EC0413-000	06151933	EJ1973-000	06151433		
Y	34	EC0414-000	06151934	EJ1974-000	06151434		
Z	35	EC0415-000	06151935	EJ1975-000	06151435		
0	00	EC0380-000	06151900	EC0357-000	06151400		
1	01	EC0381-000	06151901	EC0358-000	06151401		
2	02	EC0382-000	06151902	EC0359-000	06151402		
3	03	EC0383-000	06151903	EC0360-000	06151403		
4	04	EC0384-000	06151904	EC0361-000	06151404		
5	05	EC0385-000	06151905	EC0362-000	06151405		
6	06	EC0386-000	06151906	EC0363-000	06151406		
7	07	EC0387-000	06151907	EC0364-000	06151407		
8	08	EC0388-000	06151908	EC0365-000	06151408		
9	09	EC0389-000	06151909	EC0366-000	06151409		
+	36	EC0416-000	06151936	EC0371-000	06151436		
-	37	EC0417-000	06151937	EC0372-000	06151437		
/	38	EC0418-000	06151938	EJ1951-000	06151438		
⊥	40	EC0420-000	06151940	EJ1955-000	06151440		
.	48	EC0425-000	06151948	EJ1950-000	06151448		





Z-TYPE™ WIRE & CABLE MARKERS

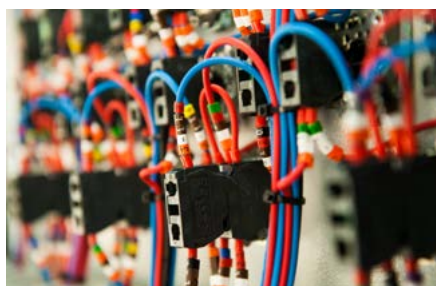
Identification & labelling



Z11 SIZE STRAIGHT CUT SUPPLIED IN BOX

- Marker Diameter: 4.8 mm
- Marker Width: 4.4 mm
- Character Height: 2.8 mm
- For Cable Dia: 2.9 mm – 4.7 mm (0.11 – 0.18 Inch)

Printed Marking	Printed sign codification (légende)	 White color / Printed black		 Yellow color / Printed black		Packaging Qty (Pieces)	Packaging type
		TCPN	Part Description	TCPN	Part Description		
A	10	EC0592-000	06161910	EJ0314-000	06161410	1000	Box
B	11	EC0593-000	06161911	EC9923-000	06161411		
C	12	EC0594-000	06161912	EJ0317-000	06161412		
D	13	EC0595-000	06161913	EJ0319-000	06161413		
E	14	EC0596-000	06161914	EJ0320-000	06161414		
F	15	EC0597-000	06161915	EJ0321-000	06161415		
G	16	EC0598-000	06161916	EJ0323-000	06161416		
H	17	EC0599-000	06161917	EJ0326-000	06161417		
I	18	EC0600-000	06161918	EJ0327-000	06161418		
J	19	EC0601-000	06161919	EJ0328-000	06161419		
K	20	EC0602-000	06161920	EJ0331-000	06161420		
L	21	EC0603-000	06161921	EJ0332-000	06161421		
M	22	EC0604-000	06161922	EJ0333-000	06161422		
N	23	EC0605-000	06161923	EJ0334-000	06161423		
O	24	EC0606-000	06161924	EJ0335-000	06161424		
P	25	EC0607-000	06161925	EJ0336-000	06161425		
Q	26	EC0608-000	06161926	EJ0337-000	06161426		
R	27	EC0609-000	06161927	EJ0338-000	06161427		
S	28	EC0610-000	06161928	EJ0339-000	06161428		
T	29	EC0611-000	06161929	EJ0340-000	06161429		
U	30	EC0612-000	06161930	EJ0341-000	06161430		
V	31	EC0613-000	06161931	EJ0342-000	06161431		
W	32	EC0614-000	06161932	EJ0343-000	06161432		
X	33	EC0615-000	06161933	EJ0344-000	06161433		
Y	34	EC0616-000	06161934	EJ0345-000	06161434		
Z	35	EC0617-000	06161935	EJ0346-000	06161435		
0	00	EC0582-000	06161900	EC0576-000	06161400		
1	01	EC0583-000	06161901	EJ0064-000	06161401		
2	02	EC0584-000	06161902	EJ0065-000	06161402		
3	03	EC0585-000	06161903	EJ0066-000	06161403		
4	04	EC0586-000	06161904	EC0577-000	06161404		
5	05	EC0587-000	06161905	EJ0067-000	06161405		
6	06	EC0588-000	06161906	143682-000	06161406		
7	07	EC0589-000	06161907	EJ0068-000	06161407		
8	08	EC0590-000	06161908	EJ0069-000	06161408		
9	09	EC0591-000	06161909	845088-000	06161409		
+	36	EC0618-000	06161936	EJ2299-000	06161436		
-	37	EC0619-000	06161937	EJ0315-000	06161437		
/	38	EC0620-000	06161938	EJ2298-000	06161438		
⊥	40	EC0622-000	06161940	EJ2300-000	06161440		
.	48	EC0628-000	06161948	EJ2297-000	06161448		





Z-TYPE™ WIRE & CABLE MARKERS

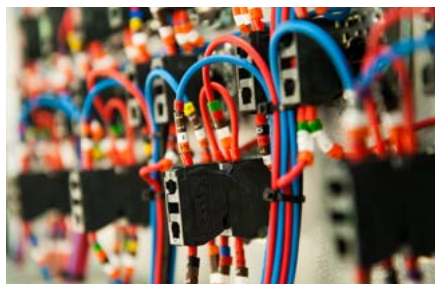
Identification & labelling



Z13 SIZE STRAIGHT CUT SUPPLIED IN BOX

- Marker Diameter: 5.8 mm
- Marker Width: 4.5 mm
- Character Height: 2.8 mm
- For Cable Dia: 3.4 mm – 5.7 mm (0.13 – 0.22 Inch)

Printed Marking	Printed sign codification (légende)	 White color / Printed black		 Yellow color / Printed black		Packaging Qty (Pieces)	Packaging type
		TCPN	Part Description	TCPN	Part Description		
A	10	EC0832-000	06171910	EC0792-000	06171410	1000	Box
B	11	EC0833-000	06171911	EC0793-000	06171411		
C	12	EC0834-000	06171912	EC0794-000	06171412		
D	13	EC0835-000	06171913	EC0795-000	06171413		
E	14	EC0836-000	06171914	EC0796-000	06171414		
F	15	EC0837-000	06171915	EC0797-000	06171415		
G	16	EC0838-000	06171916	EC0798-000	06171416		
H	17	EC0839-000	06171917	EC0799-000	06171417		
I	18	EC0840-000	06171918	EC0800-000	06171418		
J	19	EC0841-000	06171919	EC0801-000	06171419		
K	20	EC0842-000	06171920	EC0802-000	06171420		
L	21	EC0843-000	06171921	EC0803-000	06171421		
M	22	EC0844-000	06171922	EC0804-000	06171422		
N	23	EC0845-000	06171923	EJ1986-000	06171423		
O	24	EC0846-000	06171924	EC0805-000	06171424		
P	25	EC0847-000	06171925	EJ1987-000	06171425		
Q	26	EC0848-000	06171926	EC0806-000	06171426		
R	27	EC0849-000	06171927	EC0807-000	06171427		
S	28	EC0850-000	06171928	EC0808-000	06171428		
T	29	EC0851-000	06171929	EC0809-000	06171429		
U	30	EC0852-000	06171930	EC0810-000	06171430		
V	31	EC0853-000	06171931	EC0811-000	06171431		
W	32	EC0854-000	06171932	EC0812-000	06171432		
X	33	EC0855-000	06171933	EC0813-000	06171433		
Y	34	EC0856-000	06171934	EC0814-000	06171434		
Z	35	EC0857-000	06171935	EC0815-000	06171435		
0	00	EC0822-000	06171900	EC0788-000	06171400		
1	01	EC0823-000	06171901	EJ1976-000	06171401		
2	02	EC0824-000	06171902	EJ1977-000	06171402		
3	03	EC0825-000	06171903	EJ1978-000	06171403		
4	04	EC0826-000	06171904	EC0789-000	06171404		
5	05	EC0827-000	06171905	EJ1979-000	06171405		
6	06	EC0828-000	06171906	EC0790-000	06171406		
7	07	EC0829-000	06171907	EC0791-000	06171407		
8	08	EC0830-000	06171908	EJ1980-000	06171408		
9	09	EC0831-000	06171909	143900-000	06171409		
+	36	EC0858-000	06171936	EJ1984-000	06171436		
-	37	EC0859-000	06171937	EJ1981-000	06171437		
/	38	EC0860-000	06171938	EJ1983-000	06171438		
⊥	40	EC0862-000	06171940	EJ1985-000	06171440		
.	48	EC0868-000	06171948	EJ1982-000	06171448		





Z-TYPE™ WIRE & CABLE MARKERS

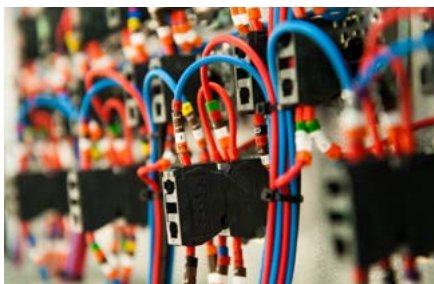
Identification & labelling



Z15 SIZE STRAIGHT CUT SUPPLIED IN BOX

- Marker Diameter: 6.3 mm
- Marker Width: 4.5 mm
- Character Height: 2.8 mm
- For Cable Dia: 3.8 mm – 6.3 mm (0.15 – 0.24 Inch)

Printed Marking	Printed sign codification (légende)	 White color / Printed black		 Yellow color / Printed black		Packaging Qty (Pieces)	Packaging type
		TCPN	Part Description	TCPN	Part Description		
A	10	EC1047-000	06181910	EH8548-000	06181410	1000	Box
B	11	EC1048-000	06181911	EJ2128-000	06181411		
C	12	EC1049-000	06181912	EJ2129-000	06181412		
D	13	EC1050-000	06181913	EJ2130-000	06181413		
E	14	EC1051-000	06181914	EJ2131-000	06181414		
F	15	EC1052-000	06181915	EJ2133-000	06181415		
G	16	EC1053-000	06181916	EJ2134-000	06181416		
H	17	EC1054-000	06181917	EJ2135-000	06181417		
I	18	EC1055-000	06181918	EJ2141-000	06181418		
J	19	EC1056-000	06181919	EJ2142-000	06181419		
K	20	EC1057-000	06181920	EJ2143-000	06181420		
L	21	EC1058-000	06181921	EJ2144-000	06181421		
M	22	EC1059-000	06181922	EJ2145-000	06181422		
N	23	EC1060-000	06181923	EJ2146-000	06181423		
O	24	EC1061-000	06181924	EJ2147-000	06181424		
P	25	EC1062-000	06181925	EJ2148-000	06181425		
Q	26	EC1063-000	06181926	EJ2149-000	06181426		
R	27	EC1064-000	06181927	EJ2150-000	06181427		
S	28	EC1065-000	06181928	EJ2151-000	06181428		
T	29	EC1066-000	06181929	EJ2152-000	06181429		
U	30	EC1067-000	06181930	EJ2154-000	06181430		
V	31	EC1068-000	06181931	EJ2155-000	06181431		
W	32	EC1069-000	06181932	EJ2158-000	06181432		
X	33	EC1070-000	06181933	EJ2159-000	06181433		
Y	34	EC1071-000	06181934	EJ2160-000	06181434		
Z	35	EC1072-000	06181935	EJ2161-000	06181435		
0	00	EC1037-000	06181900	EC1030-000	06181400		
1	01	EC1038-000	06181901	EJ2114-000	06181401		
2	02	EC1039-000	06181902	EJ2115-000	06181402		
3	03	EC1040-000	06181903	EJ2116-000	06181403		
4	04	EC1041-000	06181904	EC1031-000	06181404		
5	05	EC1042-000	06181905	EJ2117-000	06181405		
6	06	EC1043-000	06181906	EJ2118-000	06181406		
7	07	EC1044-000	06181907	EJ2119-000	06181407		
8	08	EC1045-000	06181908	EJ2120-000	06181408		
9	09	EC1046-000	06181909	EJ2121-000	06181409		
+	36	EC1073-000	06181936	EJ2127-000	06181436		
-	37	EC1074-000	06181937	EJ2122-000	06181437		
/	38	EC1075-000	06181938	EJ2124-000	06181438		
⊥	40	EC1077-000	06181940	EJ2132-000	06181440		
.	48	EC1081-000	06181948	EJ2123-000	06181448		





Z-TYPE™ WIRE & CABLE MARKERS

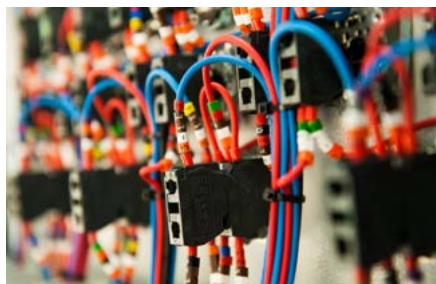
Identification & labelling



Z18 SIZE STRAIGHT CUT SUPPLIED IN BOX

- Marker Diameter: 7.4 mm
- Marker Width: 4.5 mm
- Character Height: 2.8 mm
- For Cable Dia: 4.3 mm – 6.9 mm (0.17 – 0.27 Inch)

Printed Marking	Printed sign codification (légende)	 White color / Printed black		 Yellow color / Printed black		Packaging Qty (Pieces)	Packaging type
		TCPN	Part Description	TCPN	Part Description		
A	10	EC1237-000	06201910	EH8551-000	06201410	1000	Box
B	11	EC1238-000	06201911	EJ2211-000	06201411		
C	12	EC1239-000	06201912	EJ2212-000	06201412		
D	13	EC1240-000	06201913	EJ2213-000	06201413		
E	14	EC1241-000	06201914	ED4877-000	06201414		
F	15	EC1242-000	06201915	EJ2215-000	06201415		
G	16	EC1243-000	06201916	EJ2248-000	06201416		
H	17	EC1244-000	06201917	EJ2217-000	06201417		
I	18	EC1245-000	06201918	EJ2218-000	06201418		
J	19	EC1246-000	06201919	EJ2219-000	06201419		
K	20	EC1247-000	06201920	EJ2220-000	06201420		
L	21	EC1248-000	06201921	ED4878-000	06201421		
M	22	EC1249-000	06201922	EJ2222-000	06201422		
N	23	EC1250-000	06201923	ED4879-000	06201423		
O	24	EC1251-000	06201924	EJ2224-000	06201424		
P	25	EC1252-000	06201925	EJ2225-000	06201425		
Q	26	EC1253-000	06201926	EJ2226-000	06201426		
R	27	EC1254-000	06201927	EJ2249-000	06201427		
S	28	EC1255-000	06201928	EJ2250-000	06201428		
T	29	EC1256-000	06201929	EJ2251-000	06201429		
U	30	EC1257-000	06201930	EJ2252-000	06201430		
V	31	EC1258-000	06201931	EJ2253-000	06201431		
W	32	EC1259-000	06201932	EJ2254-000	06201432		
X	33	EC1260-000	06201933	EJ2255-000	06201433		
Y	34	EC1261-000	06201934	EJ2256-000	06201434		
Z	35	EC1262-000	06201935	EJ2257-000	06201435		
0	00	EC1227-000	06201900	EH8549-000	06201400		
1	01	EC1228-000	06201901	EJ2202-000	06201401		
2	02	EC1229-000	06201902	EJ2203-000	06201402		
3	03	EC1230-000	06201903	EJ2204-000	06201403		
4	04	EC1231-000	06201904	EC1222-000	06201404		
5	05	EC1232-000	06201905	EJ2205-000	06201405		
6	06	EC1233-000	06201906	EJ2206-000	06201406		
7	07	EC1234-000	06201907	EJ2207-000	06201407		
8	08	EC1235-000	06201908	EJ2208-000	06201408		
9	09	EC1236-000	06201909	EJ2209-000	06201409		
+	36	EC1263-000	06201936	EJ2247-000	06201436		
-	37	EC1264-000	06201937	EJ2223-000	06201437		
/	38	EC1265-000	06201938	EJ2221-000	06201438		
⊥	40	EC1267-000	06201940	EJ2214-000	06201440		
.	48	EC1270-000	06201948	EJ2210-000	06201448		



Z-TYPE™ WIRE & CABLE MARKERS

Identification & labelling

Z-TYPE™ WIRE & CABLE MARKERS

Identification & labelling

Connect With Us

We make it easy to connect with our experts and are ready to provide all the support you need.

Visit www.te.com/support to chat with a Product Information Specialist.

te.com

TE Connectivity, TE Connectivity (logo) and Every Connection Counts are trademarks. All other logos, products and/or company names referred to herein might be trademarks of their respective owners.

The information given herein, including drawings, illustrations and schematics which are intended for illustration purposes only, is believed to be reliable. However, TE Connectivity makes no warranties as to its accuracy or completeness and disclaims any liability in connection with its use. TE Connectivity's obligations shall only be as set forth in TE Connectivity's Standard Terms and Conditions of Sale for this product and in no case will TE Connectivity be liable for any incidental, indirect or consequential damages arising out of the sale, resale, use or misuse of the product. Users of TE Connectivity products should make their own evaluation to determine the suitability of each such product for the specific application.

©2021 TE Connectivity. All Rights Reserved.

ELECTRICAL / Z-TYPE™ CABLE MARKERS / BROCHURE / EN

09/21

PRODUCT SHEET

TE Connectivity
3, rue Jean Perrin
69687 Chassieu cedex
France
Tel: +33 481923100