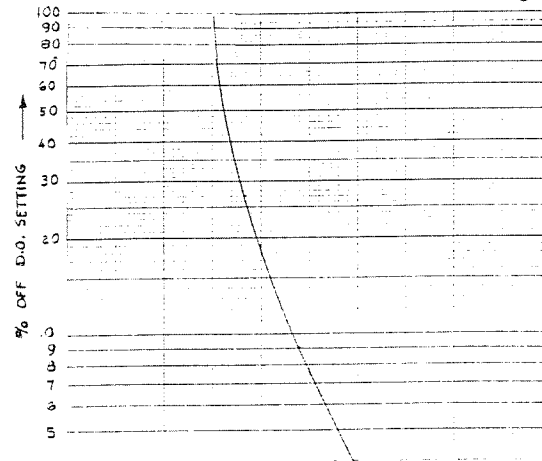
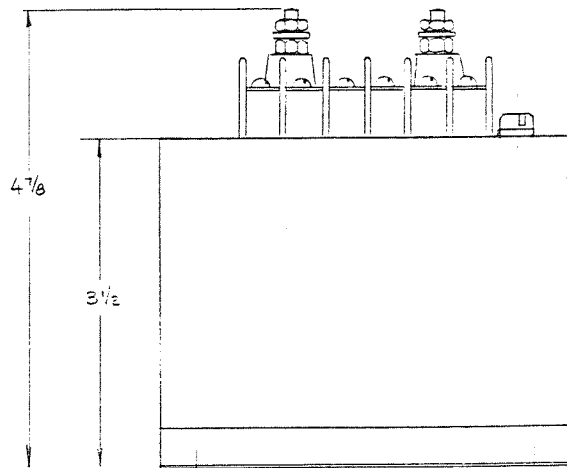
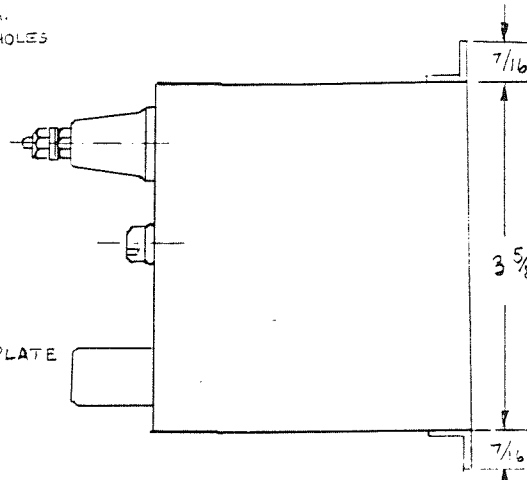
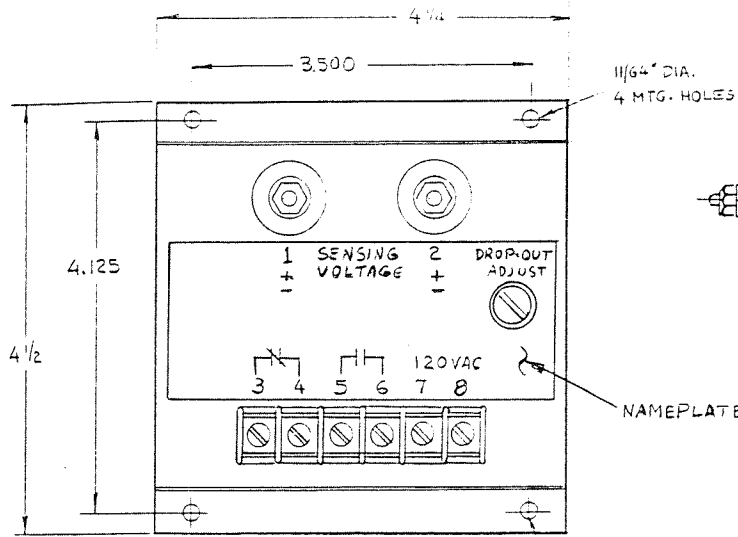


REVISIONS				
ZONE	LTR	DESCRIPTION	DATE	APPROVED
A		NAMEPLATE REVISED, 2RD VIEW ADDED 2/2/68		Z H
B		WIRING FRAMES ADDED		T V



SPECIFICATIONS

NOMINAL SENSING VOLTAGE: SEE TABLE BELOW
OVERVOLT. D.O. ADJ. RANGE: " " "
TYPE OF SENSING: BI-DIRECTIONAL DC VOLTAGE
D.O. TO P.U. DIFFERENTIAL: 1% TYPICAL
CONTROL VOLTAGE: 120 V AC 50-400 Hz
BURDEN: SENSING: .75W CONTROL: 2W
CONTACTS: 1 NC, 1 NO 5A RES. 23V DC 120V AC
OPERATING TEMPERATURE: -40°C TO +70°C
OPERATION: THE CONTACTS, SHOWN IN THE DE-ENERGIZED POSITION, WILL TRANSFER WHEN NOMINAL CONTROL AND SENSING VOLTAGES ARE APPLIED, AND WILL REVERT TO THE DE-ENERGIZED POSITION WHEN THE SENSING VOLTAGE EXCEEDS THE PRESET VALUE OR UPON LOSS OF CONTROL VOLTAGE.
CONSTRUCTION: SOLID STATE SENSOR, WITH ELECTROMECHANICAL RELAY OUTPUT ENCLOSED IN A SEALED STEEL HOUSING, PLATED PER MIL-T-10727, TYPE II

MODEL	SENSING VOLTS DC	
	NOMINAL	D.O. ADJ. RANGE
WVBI-500DC	500	500 - 700
WVBI-600DC	600	600 - 800
WVBI-700DC	700	700 - 900
WVBI-750DC	750	750 - 950
WVBI-1000DC	1000	1000 - 1200
WVBI-350DC	350	350 - 550

- NOTES:**
1. REMOVE BLACK PLASTIC SCREW TO REACH THE INTERNAL ADJUSTMENT
 2. CLOCKWISE ROTATION OF THE ADJUSTMENT, WILL RAISE THE OVERVOLTAGE DROP-OUT SETTING.

UNLESS OTHERWISE SPECIFIED DIMENSIONS ARE IN INCHES TOLERANCES ON FRACTIONS DECIMALS ANGLES ± 1/32 ± .010 ± 1/2°	CONTRACT NO.		WILMAR ELECTRONICS INC.	
	DRAWN	2-13-68	2430 AMSLER STREET TORRANCE CALIFORNIA 90505	
	CHECKED		TITLE	
	DESIGN APPROVAL		BI-DIRECTIONAL OVERVOLTAGE RELAY	
	PROJECT APPROVAL		MODEL WVBI-...DC	
MATERIAL	DESIGN ACTIVITY APPROVAL	SIZE	CODE IDENT NO.	DWG NO.
	APPROVAL	C	25248	21-872
		SCALE	WEIGHT	SHEET