



T2212-SWARE-PRINTER-E

BUDGET THERMAL TRANSFER PRINTER (300dpi)

TECHNICAL DATASHEET

TTDS-281 Revision 1, March 2022

The T2212-SWARE-PRINTER-E is designed to print on a wide range of marker sleeves, cable markers, and labels. This light weight, low cost printer is quick and easy to setup and use.

The T2212-SWARE-PRINTER-E is equipped with the latest version of TE Connectivity printing software, WinTotal. Please see page 7, for software order details.

Please see page 3, for printer order details and page 4 for replacement parts and accessory order details.

Features

- High accuracy printing
- Easy to use
- Light weight
- Small footprint
- Easy to fit accessories
- Full colour Touch screen
- Software version available
- Help Video's loaded on printer

Applications

- Office and Industrial environments

Approvals / Declarations

- | | |
|----------------------|-----------------|
| • CE | • EAC |
| • FCC Class A | • S-MARK |
| • cULus | • KC |
| • CCC | • RCM |

Environmental

A downloadable declaration and further information covering RoHS and REACH compliance can be found at the 'TE Product Compliance Support Centre':

<http://www.te.com/en/resources/product-compliance.html>

Specifications

The printer's 300dpi resolution combined with recommended media and Thermal Transfer ribbons, meet all relevant TE RW performance specifications.

Print quality and print performance can only be guaranteed when specific TE printer and ribbons are used.

The current list of printers and ribbons can be found in

TE document **TTDS-282** 'Thermal Transfer Ribbons for the T2212-SWARE-PRINTER-E. This document can be found at the TE document centre: <http://www.te.com/commerce/DocumentDelivery/DDEController>

HELP

For help and assistance please contact your local TE Connectivity representative. Alternatively, please contact your local Identification specialist by consulting TE document "411-121057" This document can be found at the TE document centre: <http://www.te.com/commerce/DocumentDelivery/DDEController>

PRINTER ORDERING INFORMATION

DESCRIPTION	PART NUMBER
T2212-SWARE-PRINTER-E	1SET540000R0000

PRINTER PROPERTIES

PERFORMANCE

PRINT SPEED	30, 40, 50, 75, 100, 125, 150mm/s. (1, 1.5, 2, 3, 4, 5, 6 in/s).
PRINT WIDTH MAX	105.7mm (4.2in).
PRINT DEFINITION	300 dpi Thermal Transfer.
LABEL WIDTH	5 to 120mm (0.2 to 4.7 in), 116mm (4.6 in) backing paper width.
LABEL HEIGHT	5mm (0.2 in) minimum to 4,500mm (176.2 in) maximum.
MEDIA ROLL CAPACITY	152mm (6.0 in) Outside Diameter, inside core diameter 38 – 76mm (1.5 – 3 in).
INK RIBBONS	25.4mm (1 inch) core, ink inside or outside, variable length up to 360M (1181 ft).
CUT MODE	Cutter & Perforator available as accessories.
SENSOR	Variable position Gap & Reflective (automatic calibration).
ELECTRICAL REQUIREMENTS	100 to 240V - 50/60Hz, PFC.
OPERATING TEMPERATURE	+5°C to +40°C (+41°F to +104°F).
OPERATING HUMIDITY	10% to 85% non-condensing RH.
POWER CONSUMPTION	Power save mode 1.8W. Typical 45W / Max 100W.
PHYSICAL CHARACTERISTICS	Depth: 322mm (12.7 inches). Height: 189mm (7.4 inches). Width: 253mm (10.0 inches). Weight: 4kg (8.8 lb).
PERFORATOR/CUTTER	Perforator: maximum product width 5 - 45mm (0.2 - 1.8 in). Cutter: maximum product width 5 - 85mm (0.2 - 3.3 in). Perforator/Cutter: 200 cuts/perforations per minute. Cut/Perforate length 5 - 1000mm.
INTERFACES	USB 2.0 High speed device for PC connection at the rear of the printer USB master X2 at rear of the printer, and X1 at side of touch screen have up to 500mA current capacity. The Touch screen USB port is for Service key and USB memory stick only. RS232 C 1.200 up to 230.400 Baud rate / 8 Bit. Ethernet 10 / 100 Base T, LPD, IPv4, RawIP printing, DHCP, HTTP/HTTPS, FTP/FTPS, SMTP, SNMP, TIME, NTP, Zeroconf, SOAP web service, VNC.
ELECTRONICS	RAM 256MB, Processor speed 800MHz, Memory IFFS flash 50MB.

Note 1:

"T2212-SWARE-PRINTER-E" is a basic Printer with TE printing software WinTotal Dongle version, included in the printer box.

WinTotal can also be purchased separately, see software order details on page 7.

PRINTER SPARE PARTS ORDERING INFORMATION (consumables)

300 dpi Printhead	
Description	T200-PRINthead-E
Part number	1SET540002R0000
Drive roller	
Part number	T200-DR4-DRIVEROLLER-E
Description	1SET540014R0000

PRINTER ACCESSORY ORDERING INFORMATION

Cutter	
Description:	T2212-PRINTER-CUTTER-E
Part number:	1SET540003R0000
Perforator:	
Description:	T2212-PRINTER-PERFORATOR-E
Part number:	1SET540004R0000
Universal reel holder	
Description:	PRINTER-UNIVERSAL-REEL-HOLDER-E
Part number:	1SET540001R0000



T2212 printer fitted with Cutter/Perforator.



T2212 printer with the Universal reel holder.



CUTTER & PERFORATOR For the T2212-SWARE-PRINTER-E

The T2212-PRINTER-CUTTER-E and the T2212-PRINTER-PERFORATOR-E are easy to fit, and operate printer accessories. They can be fitted in minutes without the need for any tools.

The cutter will accurately and cleanly cut set lengths of continuous tube and labels.

The Perforator will partially cut through to a pre defined depth to leave a tear away perforated edge.

Features

- Robust cutter and perforator units
- Easily fitted in minutes
- No tools required for fitting
- Low maintenance required

Applications

- Industrial environments

Approvals / Declarations

- CE

ORDERING INFORMATION

DESCRIPTION	PART NUMBER	
T2212-PRINTER-CUTTER-E	1SET540003R0000	
T2212-PRINTER-PERFORATOR-E	1SET540004R0000	
PROPERTIES	CUTTER	PERFORATOR
TUBE/LABEL WIDTH MAX:	5 – 85mm (0.2 – 3.3 in)	5 - 45mm (0.2 - 1.8 in)
TUBE/LABEL THICKNESS (range)	0.4 – 0.7mm (0.02 – 0.03 in)	0.4 – 0.7mm (0.02 – 0.03 in)
CUT/PERFORATION LENGTH	10 – 1000mm (0.4 – 39.4 in)	10 – 1000mm (0.4 – 39.4 in)
CUT/PERFORATION RATE	200 cuts / minute	200 perforations / minute
WEIGHT	0.65kg (1.4 lb.)	0.65kg (1.4 lb.)
UNIT DEPTH (when fitted)	38mm(1.5 in)	38mm(1.5 in)
UNIT HEIGHT	140mm (5.5 in)	140mm (5.5 in)
UNIT LENGTH	150mm (5.9 in)	150mm (5.9 in)



UNIVERSAL REEL HOLDER

The Universal reel holder is a free standing bench top, or wall mounted reel holder. Designed to dispense marker sleeves, cable markers, and labels. This robust all metal, low cost reel holder replaces all other Printer reel holders.

DESCRIPTION	PART NUMBER
PRINTER-UNIVERSAL-REEL-HOLDER-E	1SET540001R0000

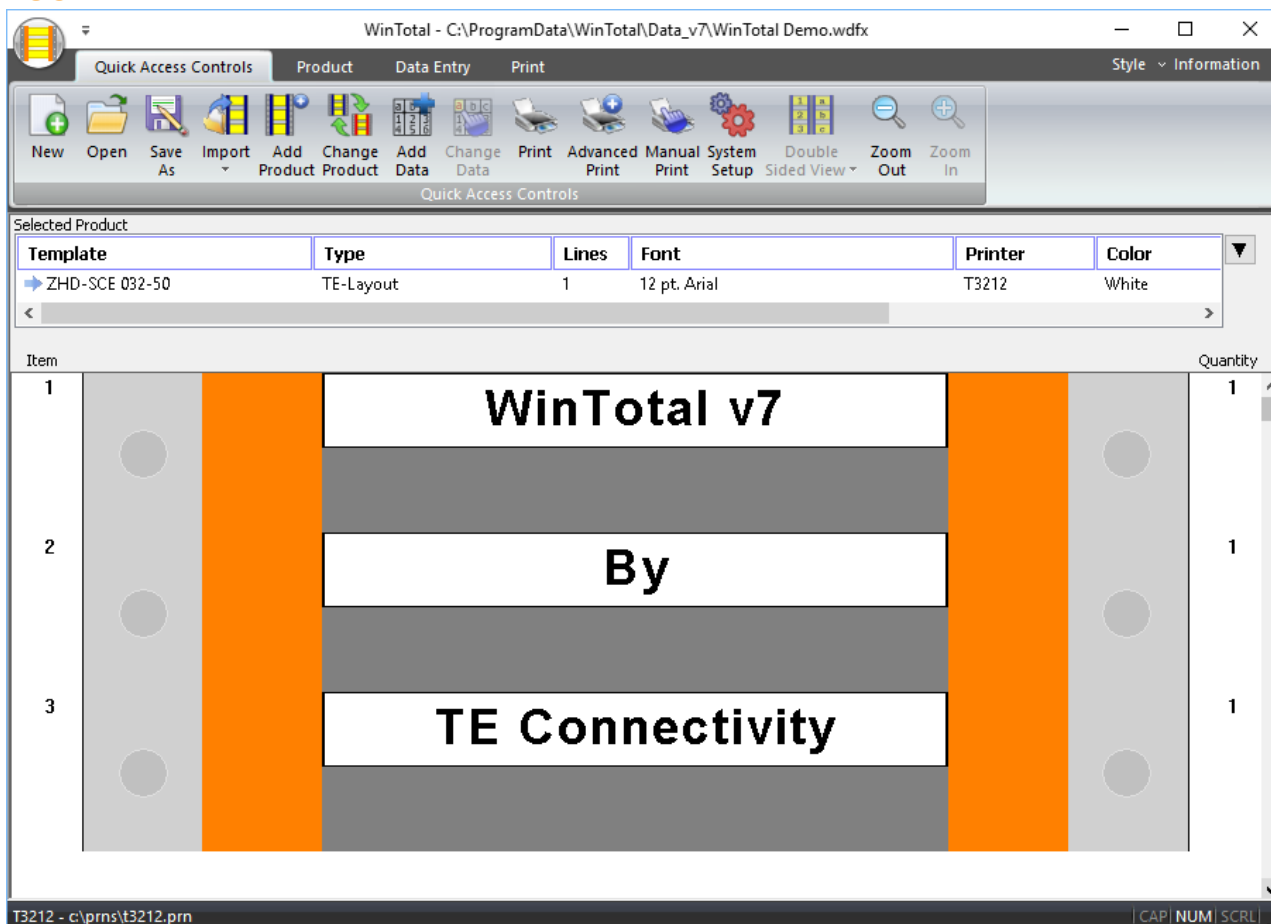
Features

- Compatible with the full range of printers
- Dispenses the full range of Cable markers and Labels
- Free standing bench top
- Wall mountable for space saving
- Robust, all metal stand

Applications

- Industrial environments

SOFTWARE



SOFTWARE ORDERING INFORMATION

WINTOTAL 7 (Dongle)	
Description	WINTOTAL-7-DONGLE-E
Part number	1SET540005R0000

For full compatibility with T2212 printer range please use WinTotal version 6.1.07 or later.

Cable Markers are fully supported by WINTOTAL label printing software, available from the TE product store: www.te.com/wintotal
Contact a TE representative for further information.

te.com

TE Connectivity, TE, TE Connectivity (logo) and Every Connection Counts are trademarks. All other logos, products and/or company names referred to herein might be trademarks of their respective owners

The information given herein, including drawings, illustrations and schematics which are intended for illustration purposes only, is believed to be reliable. However, TE Connectivity makes no warranties as to its accuracy or completeness and disclaims any liability in connection with its use. TE Connectivity's obligations shall only be as set forth in TE Connectivity's Standard Terms and Conditions of Sale for this product and in no case will TE Connectivity be liable for any incidental, indirect or consequential damages arising out of the sale, resale, use or misuse of the product. Users of TE Connectivity products should make their own evaluation to determine the suitability of each such product for the specific application.

